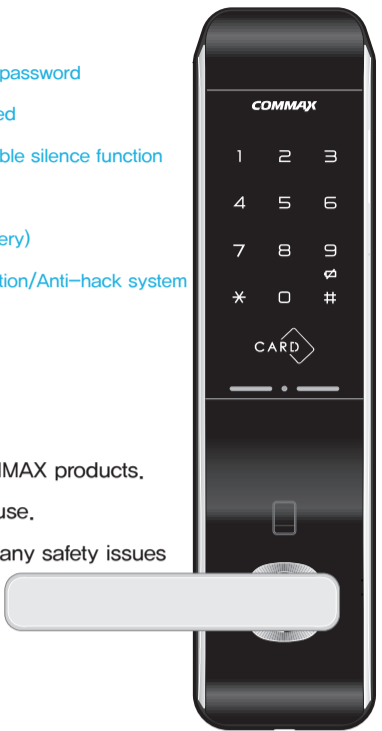


CDL-200L

USER MANUAL

- Durable Door lock
- Metal body
- Additional number entry for secure password
- Multiple passwords can be registered
- Multi-level volume control / Selectable silence function
- Light-up buttons for visibility
- Emergency power function (9V battery)
- High-voltage protection/Fire protection/Anti-hack system
- Simple registration
- Remote control using BLE, ZIGBEE



COMMAX Co., Ltd.

Thank you for purchasing COMMAX products.
Please read this manual before use.

Commax is not responsible for any safety issues due to abnormal operation of the product

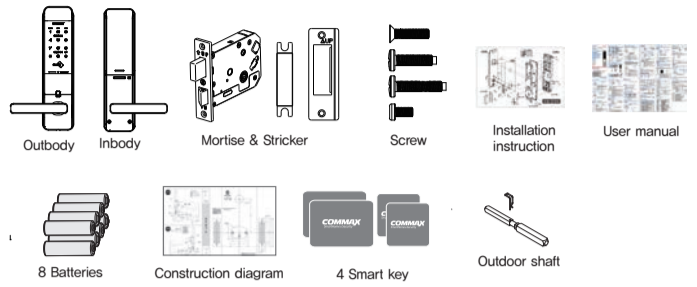
⚠ This lock does not come with a physical key and in the rare event of failure, may require the destruction of the lock for removal and replacement.

Safety Warning

- ⚠ These warnings are to ensure the secure operation of the lock. Carefully read the instructions below
- * No unauthorized person should disassemble, repair or modify the device.
- * This product is for indoor use.
- * Please read the User Manual before using product.
- * Do not press the buttons with any sharp objects
- * Change your access code from time to time for your safety.
- * Do not impact the device.
- * Be careful of leakage or rupture that may occur when inserting a battery in wrong direction.
- * Prevent the device coming in contact with water
- * when replacing a battery, change all the batteries with new alkaline batteries.
- * Please wipe the product with soft, dry towels.
- * Please keep product warranty card for after service.
- * Do not use this product for other purposes than digital door lock function.

Products specifications and components

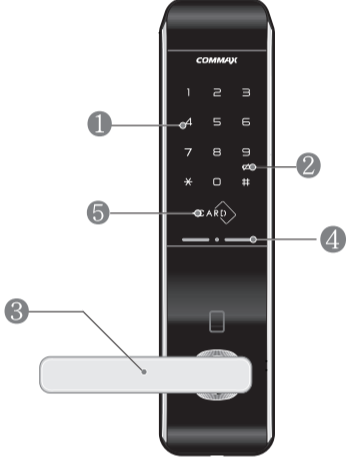
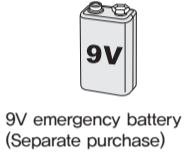
Sort	Specifications	
Opening method	Password	4-12 digits (Up to 4 can be registered)
	Smart key	It can register within 30
Rated voltage	DC 6V	LR6 1.5V AA sized alkaline batteries 4
Emergency power	DC 9V	Alkaline batteries 8 (Separate purchase)
Type of product	Fire-proof, Temperature-sensitive form, None-KEY, Primary keylock / F-T-NK-M	
High temperature sensing	Temperature sensor type	60°C ± 10°C
Material	Out body	AL,ZN,ABS,PC
	In body	AL,ZN,ABS,PC



*The components of the product may change depending on the installation environment.

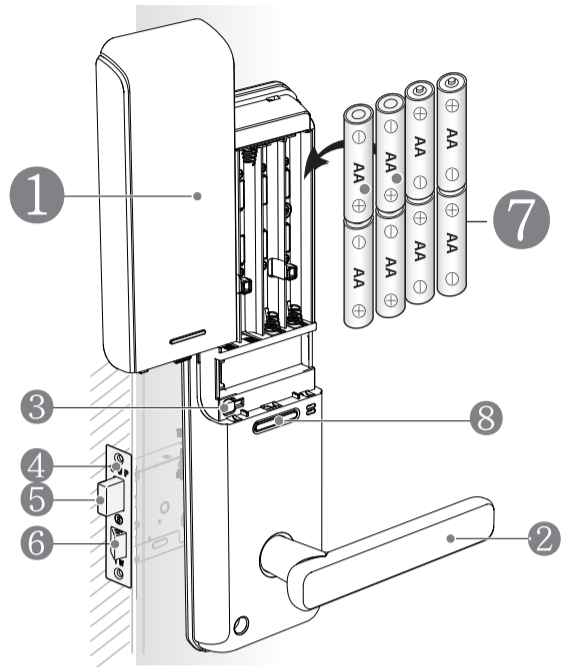
Outdoor Names and Functions

No	Name	Specifications
1	Number plate	Enter the number when registering or changing password.
2	Battery warning light	Turns on with an audible alarm at low voltage.
3	Outdoor handle	It is Used to open or close doors from outdoors.
4	Emergency power terminal	In case the battery is completely discharged, you can use 9V battery then, the power will be on.
5	Smart key input unit	It is the place where smart keys are recognized to open the door. You can open the door by registering the smart key or touching the registered smart key.



Indoor Names and Functions

No	Name	Specifications
1	Battery cover	This cover protects the batteries and the registration button.
2	Indoor handle	Used to open or close the door indoors.
3	Registration button(R)	Used to register or change password or smart key
4	Mortise	Closes or locks the door
5	Dead bolt (Square locking type)	It locks the door
6	Latch bolt	Stabilizes door on closing
7	Alkalina AA battery	Power source that operates the door lock
8	Double lock button (Close button)	Can be used to lock the door so that it can not be opened from the outside.



How to register and change password

- ⚠ Be sure to register your password with the door open.
 - 1. Press [registration] button
 - 2. Press [1] button in the number plate of outdoor side
-
- Beep
- Open the battery cover and press [registration] button
- 3. Enter new password
- After entering the new password(4~12 digits), press * button and the confirmation tone sounds and registration is completed. Press the * button once more to end registration.

Reference

- When adding the password, repeat the above item 3 before the key pad turns off.
- Up to 4 password can be registered

Cautions

- If you register a new password, the existing password will be automatically deleted.
- Do not use consecutive numbers when registering your password.

How to register smart key

- 1. Press [registration] button
 - 2. Press [2] button in the number plate of outdoor side
-
- Beep
- Open the battery cover and press [registration] button
- 3. Contact smart key to smart key input unit
- If you touch the smart key to be registered one by one, you will hear a confirmation sound every time you touch it. Registration is completed by clicking the [Registration] button on the indoor side body.

Reference

- When adding the smart key, please repeat the above item 3 before the [Number plate lamp] turns off.
- Up to 30 smart keys can be registered.

Cautions

- When registering a new smart key, the existing smart key is automatically deleted.

How to delete smart key

- Press [registration] button
 - Press [7] button in the number plate
-
- Beep
- Open the battery cover and press [registration] button
 - Press [#] button

Press and hold the [#] button for 5 seconds to delete the registered smart key.

Locking door from inside and outside

Indoor	Outdoor
Press the [double lock] button on the inside	Touch the keypad

Open the door in outside

- Method 1** Open the door by password
- Enter password
 - Press [*] button
-
- Touch the number plate and enter your password
- Press the [*] button, you will hear a confirmation tone and then the door will open

Method 2 Open the door with smart key

- Contact smart key to smart key input unit
- When the registered [Smart Key] is touched to the smart key input part, a confirmation tone is heard and it opens when you open the door.

Internal double lock setting

- It is a function that can not open a door with a password or a smart key outside the door.
- Setting**
- While the door is locked, press and hold the [double lock] button for 3 seconds
- If you press and hold the [DUAL LOCK] button for 3 seconds, the setting is completed with sound.

How to release internally

- Open the door by handle to release lock
- Press the [double lock] button inside to dismiss double lock setting

Deactivation from outdoor unit

- Enter Password
 - Press [#], [9] button
- Touch the number plate and enter your password
- Press [#] then press [9], internal double lock is off with beep sound

Registration authentication setting

- Enter password
 - Press [#] button twice, press [8] button.
- Touch the number plate and enter your password
- Registration authentication Mode on/off

Reference

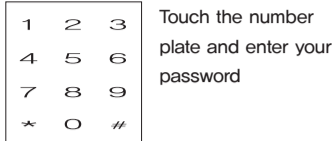
- If registration authentication mode is activated, first authentication by existing password should be done for the next step.
- * Registration authentication is not activated if factory setting.
- * To deactivate registration authentication, repeat the same procedure for activation

Volume Adjustment

Deadbolt of indoor unit must be come out from mortise before setting

How to

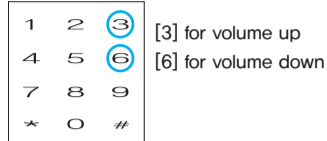
1. Enter Password



2. Press [#] button



3. Press [3] or [6] to adjust volume



Reference

- Available total 8 levels of volume sound
- If sound pause mode, numbers are only flicking without sound

Sound Pause Mode

Temporary silence function (1 time) regardless latest volume setting

How to

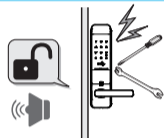
- Touch number plate and press [#]
- Press [*] after password or, contact smart key to open the door.

Reference

Sound is back to the original volume if pause mode is operated once

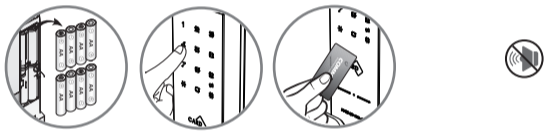
Burglar Alert

If door to be opened by abnormal operation such as door gap break through, burglar alert rings with more than 80db noisy sound.



How to deactivate burglar or temperature alert

Remove batteries or [password + *]. [Smart key touch]
* if temperature is too high, no deactivation.



Battery Replacement Alert

If battery alert light is on on number plate or beep sounds ring, battery has to be replaced. All batteries must be replaced with new one at once.



Caution

- Lifetime of battery can be varied according to manufacturers, date of production, working condition. (Expected lifetime : 10 months assuming no wireless operation, AA type alkaline 8ea, 10 times per one day use)
- If battery liquid leaks out, product can be damaged. Regular checking is recommended - every 6 months.
- Battery lifetime might be shortened if wireless module is activated.

High Temperature Alarm

Once extremely high temperature is detected (60°C ± 10°C), locker is automatically released to open the door with huge sound to secure user's safety.



Emergency Power

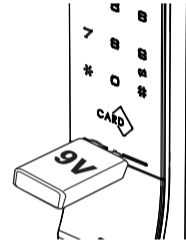
When door can not be opened due to fully discharged battery.

1. Contact the terminals of 9V battery to emergency power outlet

Press [Password] and [*] to open the door while contacting terminals of 9V battery to emergency power outlet.



9V emergency battery (sold separately)



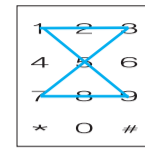
Factory Reset Mode

1. Press [Registration] button.

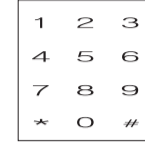


Open the battery cover and press [Registration] button for 5 secs

2. Enter "123578951" when number plate lights on



3. Press [#] button for 2 secs.



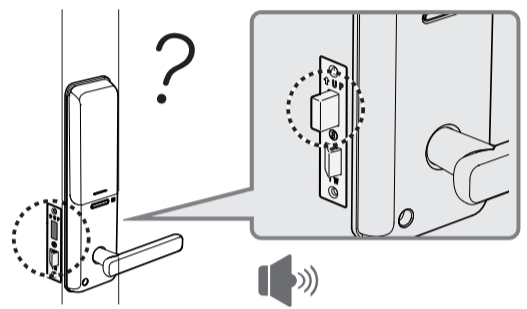
Factory default mode is completed with beep sound.

Caution

- All settings back to the default after factory reset including master information

Deadbolt Jam alert

When deadbolt is jammed during door open/close, alert sound of bee bee bee bee" rings 3 times.



Caution

- If no sound deactivation or door lock malfunction, product installed position has to be adjusted. Please contact your local installer or service provider.

How to register/delete ZIGBEE

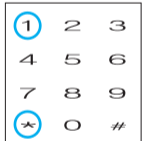
Register

- Press [registration] button for 5 seconds
- Press [1] button twice then press [*]



Beep

Open the battery cover and press [registration] button



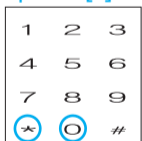
Delete

- Press [registration] button for 5 seconds
- Press [0] button twice then press [*]



Beep

Open the battery cover and press [registration] button



How to register/delete BLE

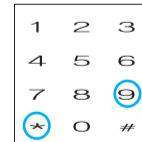
Register

- Press [registration] button for 5 seconds
- Press [9] button twice then press [*]



Beep

Open the battery cover and press [registration] button



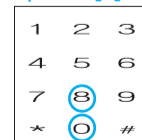
Delete

- Press [registration] button for 5 seconds
- Press [0] button twice then press [*]



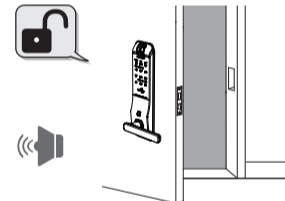
Beep

Open the battery cover and press [registration] button



Door Open Alert during automatic lock setting

To inform door open status during automatics lock setting, alert sound rings 2 times with each 15 seconds interval if door opened.



Regulatory Compliance

This product complies with standards established by the following regulatory bodies:
• Federal Communications Commission (FCC)
• Industry Canada

FCC

This device complies with Part 15 of the FCC Rules. Operation is subject to the following two conditions:

- this device may not cause harmful interference, and
- this device must accept any interference received, including interference that may cause undesired operation.

This equipment has been tested and found to comply with the limits for a Class B digital device, pursuant to Part 15 of the FCC Rules. These limits are designed to provide reasonable protection against harmful interference in a residential installation. This equipment generates, uses, and can radiate radio frequency energy and, if not installed and used in accordance with the instructions, may cause harmful interference to radio communications.

However, there is no guarantee that interference will not occur in a particular installation. If this equipment does cause harmful interference to radio or television reception, which can be determined by turning the equipment off and on, the user is encouraged to try to correct the interference by one or more of the following measures:

- Reorient or relocate the receiving antenna.
- Increase the separation between the equipment and receiver.
- Connect the equipment into an outlet on a circuit different from that to which the receiver is connected.
- Consult the dealer or an experienced radio/ TV technician for help.

IMPORTANT! Changes or modifications not expressly approved by the manufacturer could void the user's authority to operate the equipment.

FCC Radiation Exposure Statement

The equipment complies with FCC Radiation exposure limits set forth for uncontrolled environment. This equipment should be installed and operated with minimum distance 20 cm

Industry Canada

This device complies with Industry Canada license exempt RSS standard(s). Operation is subject to the following two conditions:

- this device may not cause interference, and
 - this device must accept any interference, including interference that may cause undesired operation of the device.
- This device complies with ICSED radiation exposure limits set forth for an uncontrolled environment and meets the ICSED radio frequency (RF) Exposure Guidelines. It is desirable that it should be installed and operated keeping the radiator at least 20 cm or more away from person's body.

Canada, avis d'Industrie Canada (IC)

Cet appareil est conforme aux normes RSS exemptes de licenciement d'Industrie Canada.

Son utilisation est soumise aux deux conditions. (1) cet appareil n'engendre pas d'interférences, et (2) cet appareil doit tolérer tout type d'interférences, notamment les interférences pouvant provoquer une utilisation non désirée de l'appareil.

Cet équipement est conforme aux limites établies par Industrie Canada en matière d'exposition aux radiations dans un environnement non contrôlé. Cet équipement doit être installé et utilisé avec une distance minimale de 20 cm entre le radiateur et votre corps. between the radiator and your body.

Self-Diagnosis Table by each LED number flicking

To see the status of product by means of checking flicking number

ACTION	SELF-DIAGNOSIS
Flicking ALL LEDs	- Anti-mischief alert and 1 minute pause
Flicking LED number 2	- Error on password
Flicking LED number 3	- Full of registered password
Flicking LED number 4	- Deadbolt Jam
Flicking LED number 5	- Burglar Alert
Flicking LED number 6	- Unregistered password
Flicking LED number 7	- Already registered address
Flicking LED number 8	- Fire Alarm
Flicking LED number 9	- Dual lock from Indoor unit
Flicking LED number 0	

Summary of how to use

Function	Default	
Password registration/change	1234	[Registration] => [1] => Password to register => [*] => [*]
Smart key registration	None	[Registration] => [2] => Smart key touch to smart key input unit => [Registration]
Delete all card		[Registration] => [7] button => [#] button More than 5 seconds
Open the door indoors		Turn down the doorlock handle
Close the door indoors		Press the [Double Lock]
Open the door outdoors		Password: Touch the Number Plate => Password => [*] Smart key: Smart key touch to smart key input unit
Close the door outdoors		After closing the door, Touch the Number Plate
Set registration authentication mode	Off	Password => [#] [#] => [8]
Internal dual lock LED setting		Password => [#] [#] => [5]
Double lock setting	Off	Hold the [Double lock] of indoor doorlock for 3 seconds 1. Turn down the indoor doorlock handle 2. Press the [Double lock] of indoor doorlock 3. Password => [#] => [9]
Release internal Double lock		[#] => Enter password => [*]
Etiquette mode function		Volume up: Password => [#] => [3] Volume down: Password => [#] => [6]
Buzzer volume setting		Indoor: Remove the battery Outdoor: Password => [*]
Release alarm sound		* Without registered master password Registration: [Registration] => [1] => [Double lock] => [#] 5times => [New master password] => [*] * When there is a registered master password Registration: [Registration] => [1] => [Double lock] => [#] 5times => [Master password] => [*] => [New master password] => [*] Delete: [Registration] => [1] => [Double lock] => [#] 5times => [Master password/9635741] => [#] => [1] => [#] * Without registered master password Can't register
Register and delete master password		* When there is a registered master password Registration: [Registration] => [1] => [Double lock] => [#] 5times => [Master password] => [*] => [New master password] => [*] Delete: [Registration] => [1] => [Double lock] => [#] 5times => [Master password/9635741] => [#] => [2] => [#]
Register and delete master card		* Without registered master password Can't register * When there is a registered master password Registration: [Registration] => [1] => [Double lock] => [#] 5times => [Master password] => [*] => [New master card] => [*] Delete: [Registration] => [1] => [Double lock] => [#] 5times => [Master password/9635741] => [#] => [2] => [#]
Delete all master passwords and cards		Delete: [Registration] => [1] => [Double lock] => [#] 5times => [Master password/9635741] => [#] => [3] => [#]