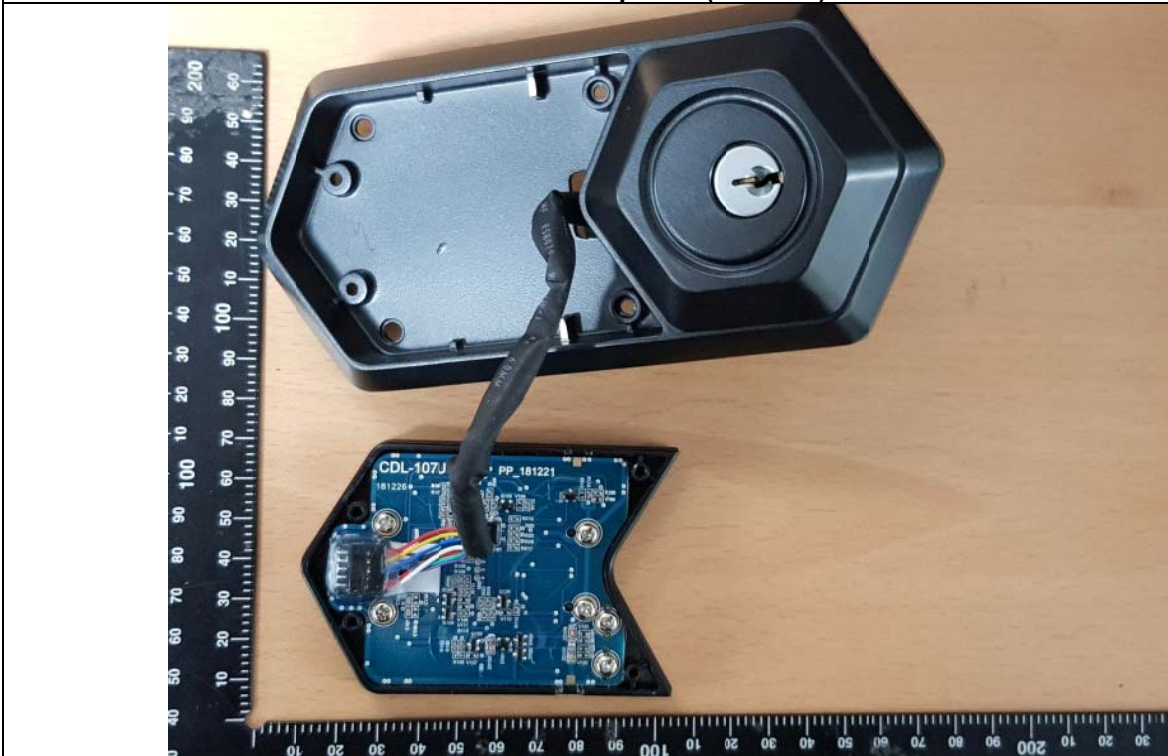


Internal Photos

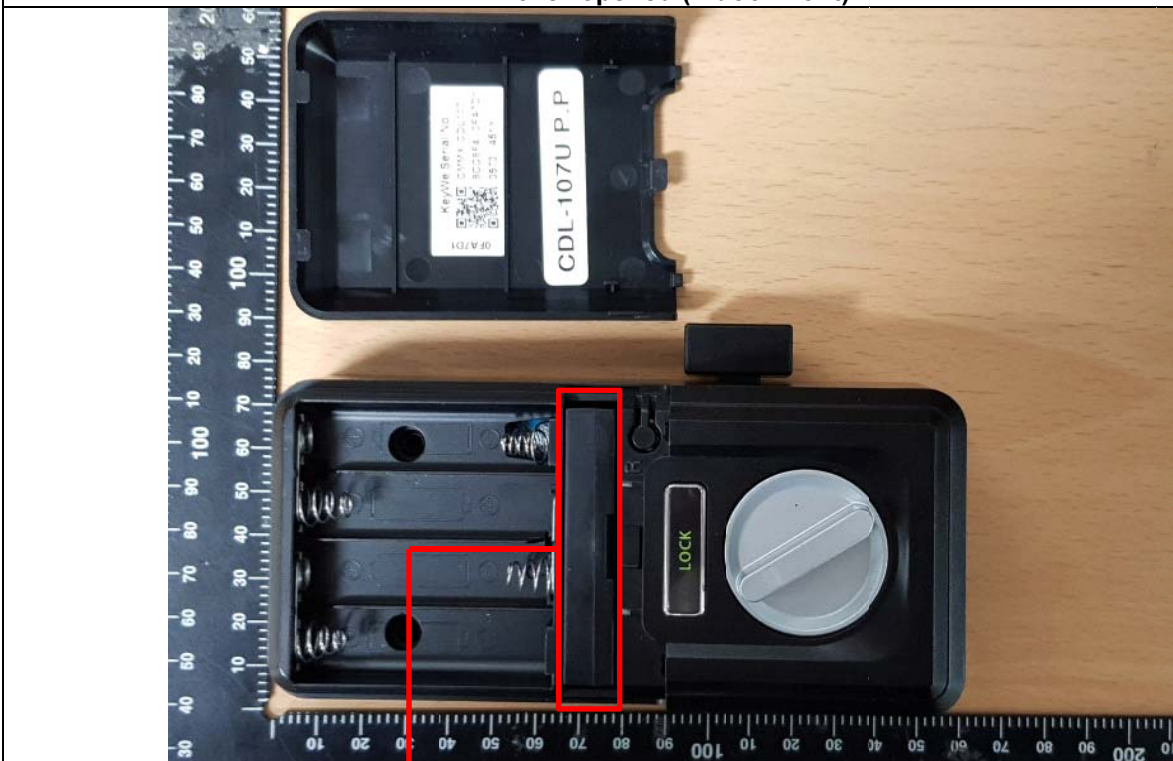
Cover opened (Indoor)



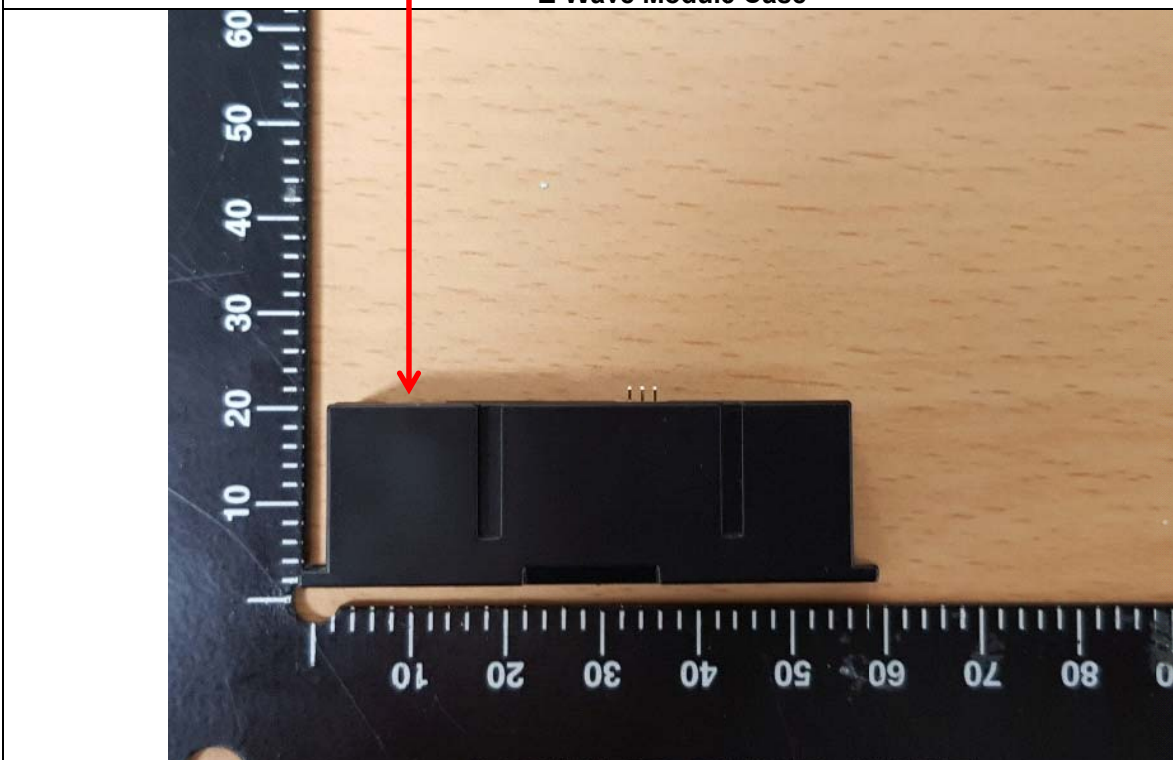
Cover opened (Outdoor)



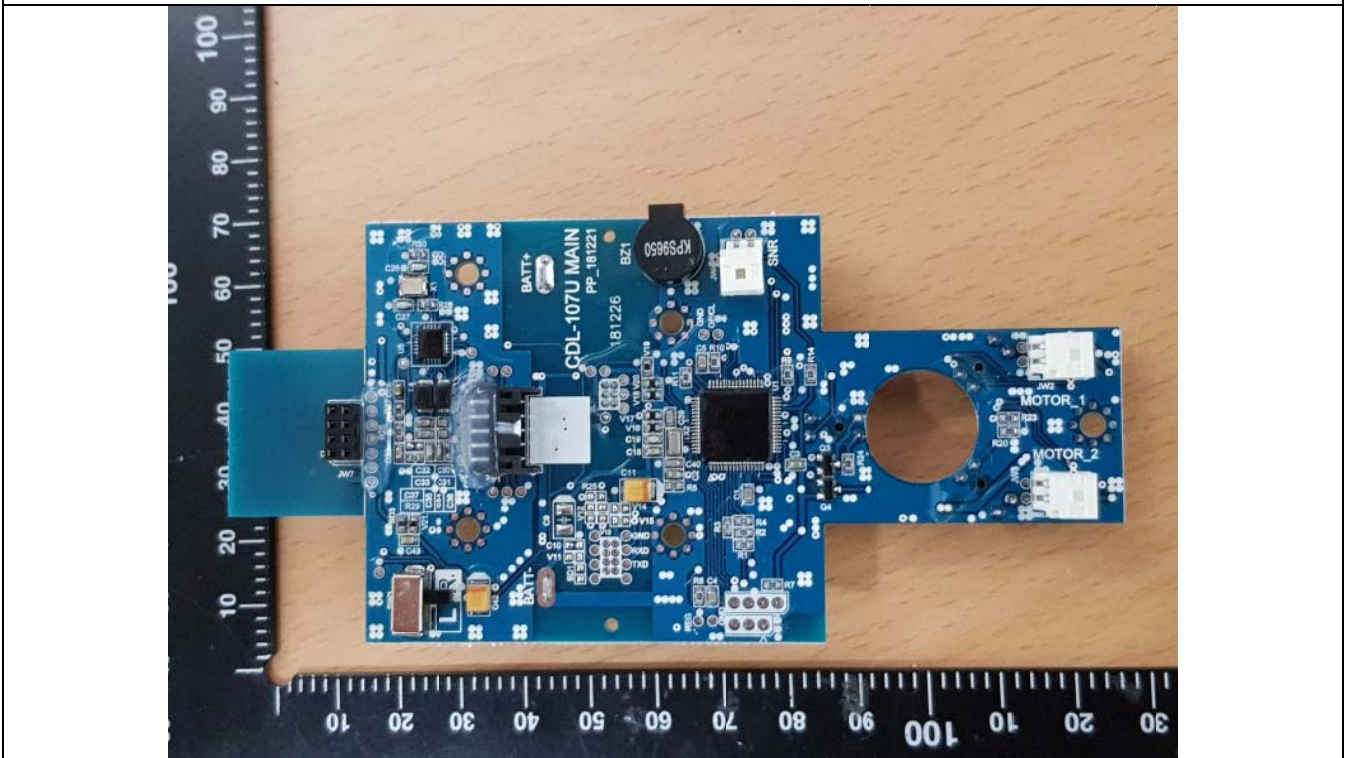
Cover opened (Indoor front)



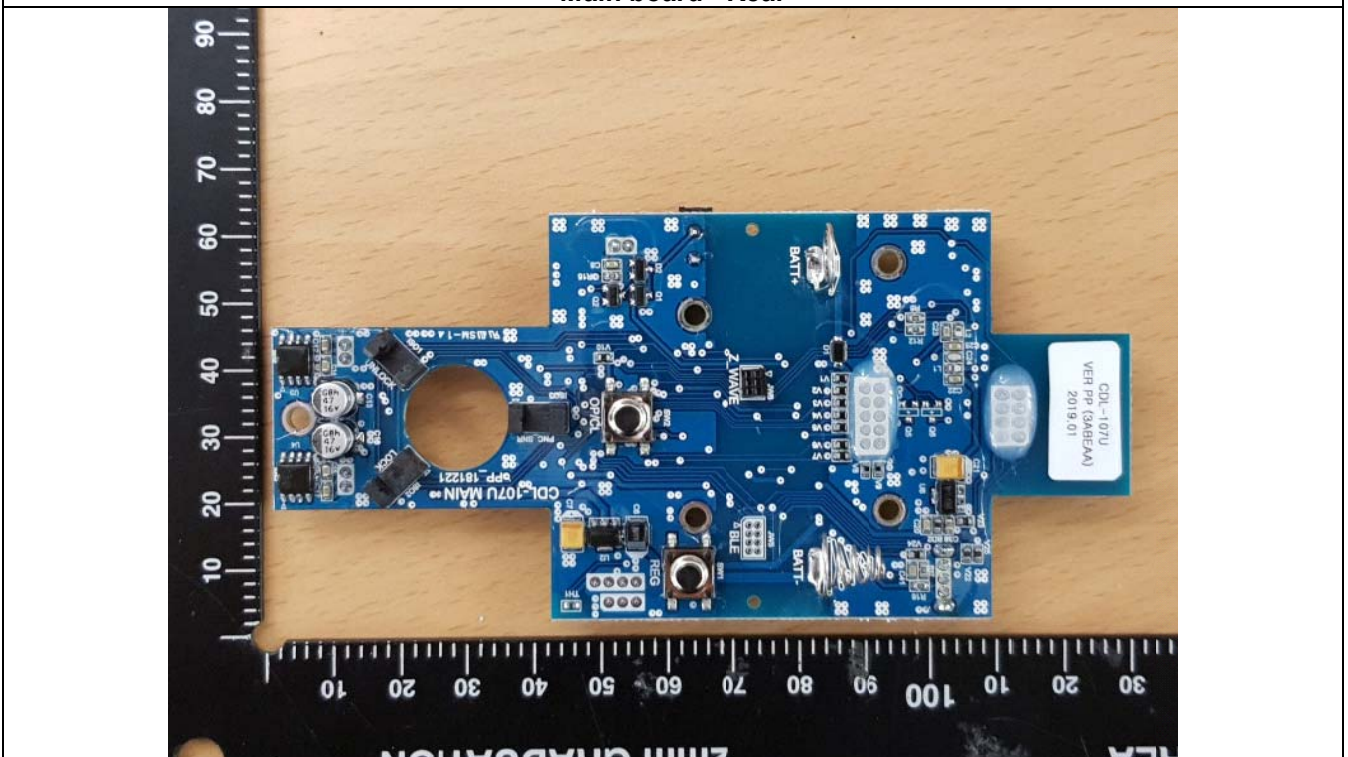
Z-Wave Module Case



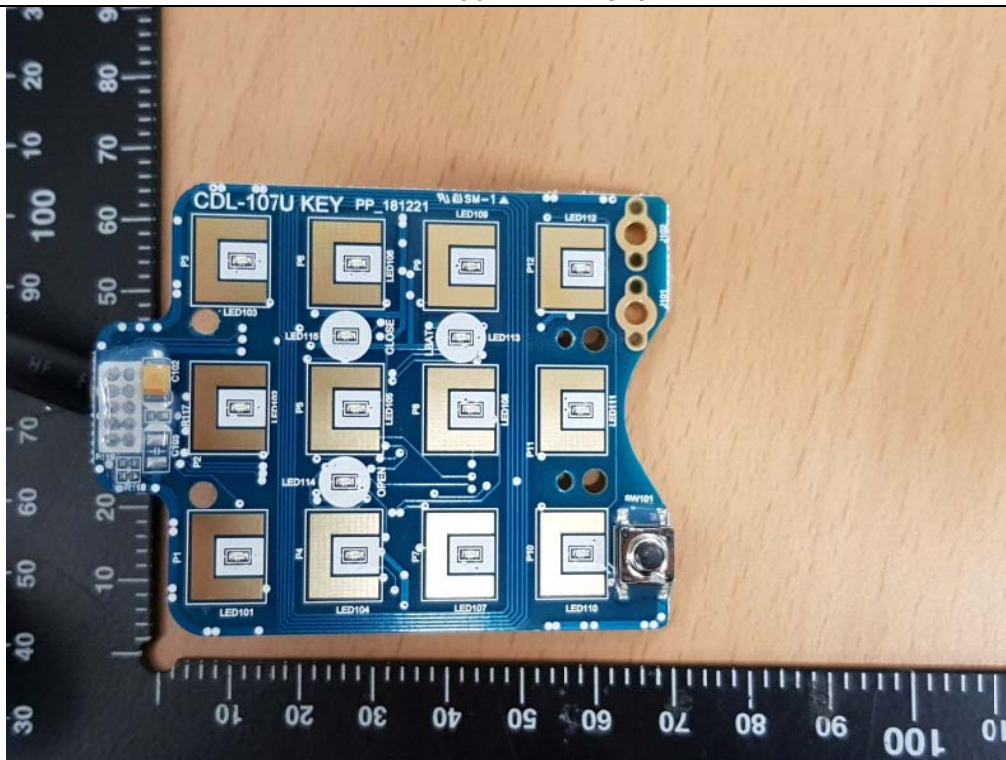
Main board - Front



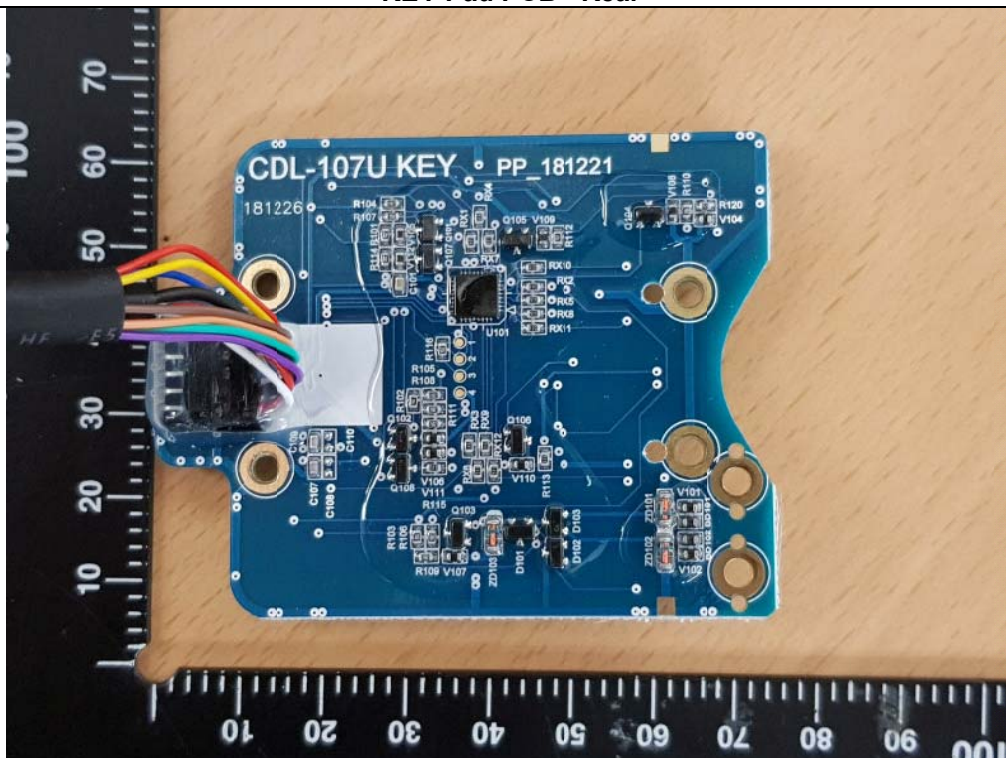
Main board - Rear



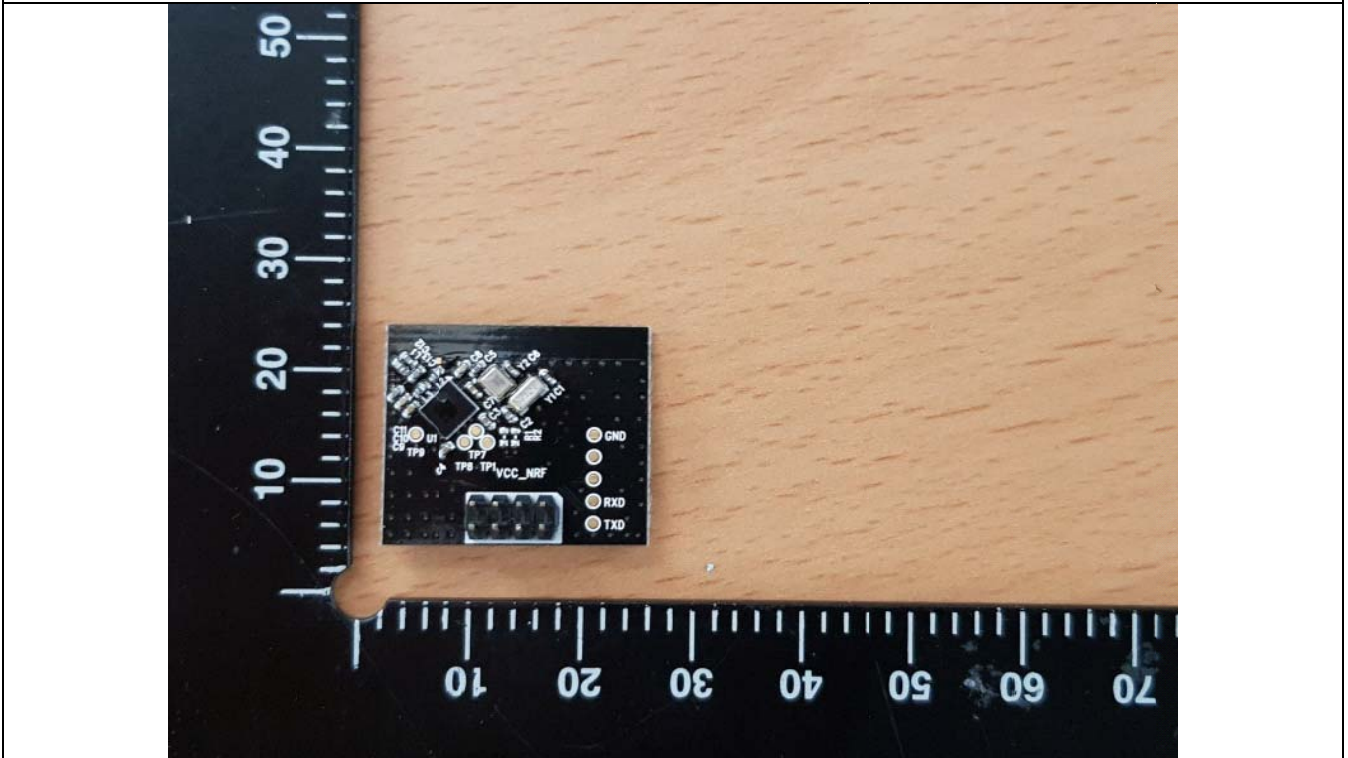
KEY Pad PCB - Front



KEY Pad PCB - Rear



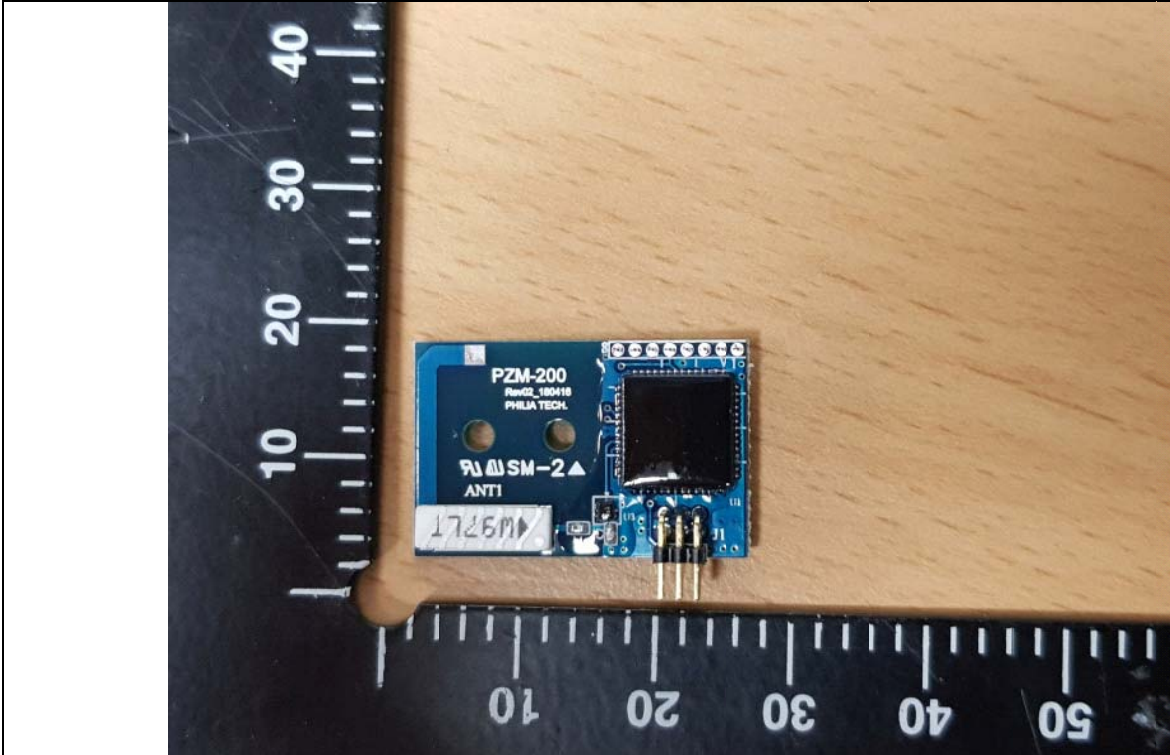
Bluetooth Module PCB - Front



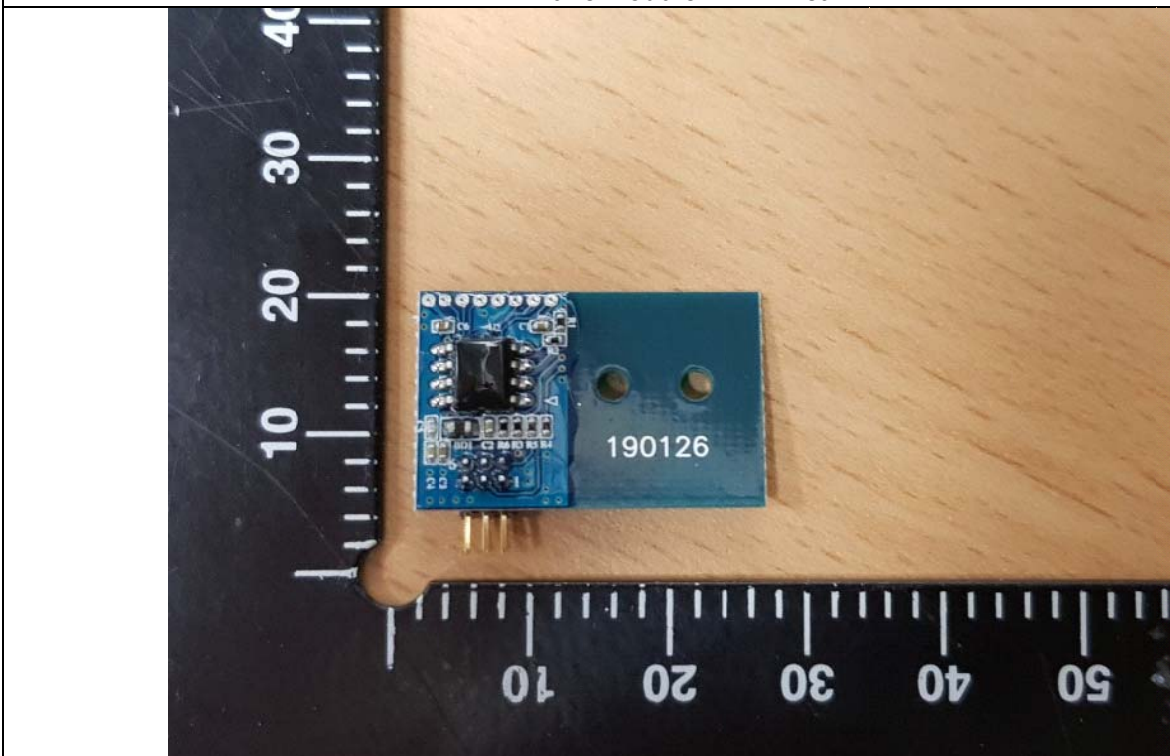
Bluetooth Module PCB - Rear



Z-Wave Module PCB - Front



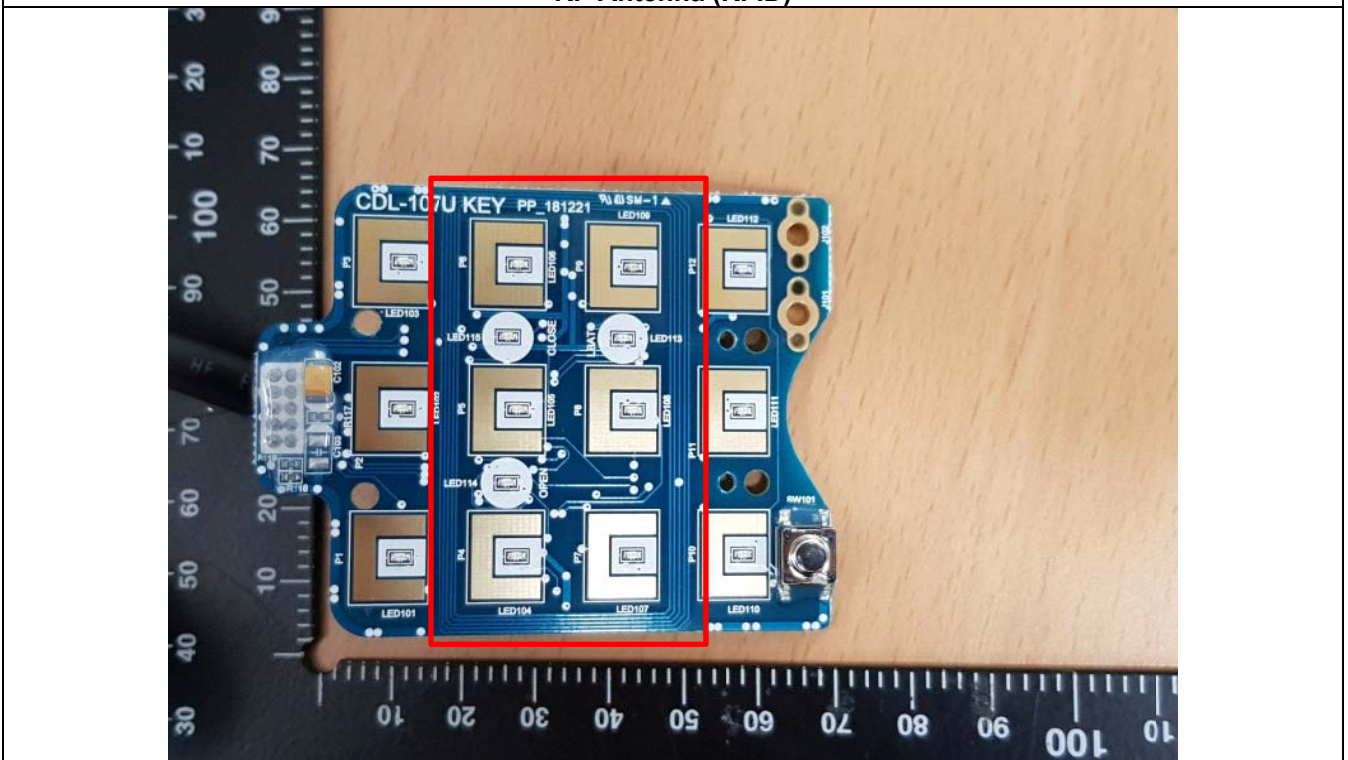
Z-Wave Module PCB - Rear



RF Antenna (Bluetooth)



RF Antenna (RFID)



RF Antenna (Z-wave)

