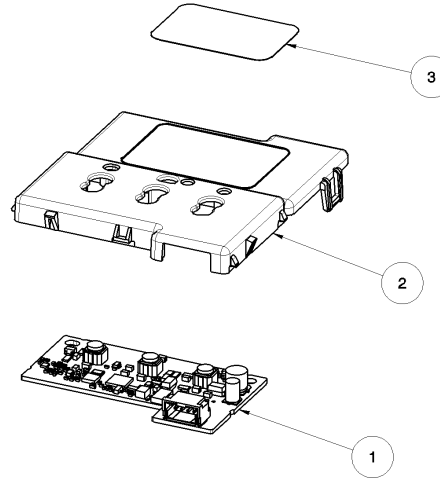


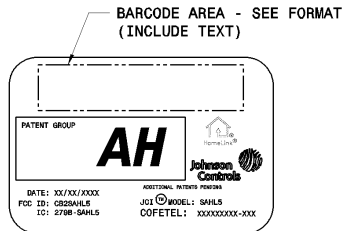
SEE LABEL NOTES/VIEW



3	LBL, STOCK 1.0 x 1.5	VJ6846
2	HSG.HL5 NANO CORE	2270840
1	PCB ASM.HL5 NANO CORE	2267908
ITEM	DESCRIPTION	PART NO. (L/F)

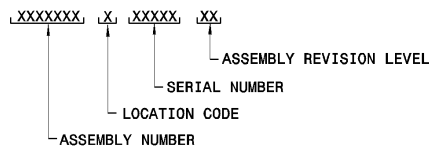
NOTES:

- INDIVIDUAL COMPONENTS ON PCB ASSEMBLY ARE FOR REFERENCE ONLY.
- ASSEMBLER IS TO PRINT LABEL INFORMATION AS SHOWN USING ADHESIVE LABEL.
- PLACE LABEL ON HOUSING AT THE LOCATION DEFINED.
- REFER TO LATEST REVISION OF DRAWING 1535474 FOR ACTUAL PATENT NUMBERS FOR THE PATENT GROUP IDENTIFIED. LAY OUT PATENT NUMBERS TO FILL SPACE AVAILABLE. BUT NATION / ORGANIZATION OF ORIGIN HEADINGS MUST BE MAINTAINED FOR CORRESPONDING PATENT NUMBERS AS SHOWN ON LATEST REVISION OF DRAWING 1535474.
- FOR THE PRODUCTION DATE USE THE FORMAT "MONTH/DAY/YEAR".
- ASSEMBLY MUST COMPLY TO TEST SPECIFICATION TDE-ELE-180.
- ASSEMBLY MUST COMPLY WITH FMVSS 302 & CMVSS 302.



LABEL VIEW
SCALE: 2:1

FORMAT FOR BARCODE



SPECIFICATIONS			
PERFORMANCE:	SEE COMPONENT LEVEL DRAWINGS		
MATERIAL:	SEE COMPONENT LEVEL DRAWINGS		
FINISH:	N/A		
ELECTRONICS STD. UNLESS OTHERWISE SPECIFIED			
THIRD ANGLE PROJECTION		ASME Y14.5M 1994	
DIMENSIONS ARE IN INCHES WITH EQUIVALENT MILLIMETERS SHOWN IN BRACKETS			
X.X	DECIMAL	± 0.040	ANGULAR ± 2 0'
X.XX	DECIMAL	± 0.020	DRAFT ANGLES NOTED
X.XXX	DECIMAL	± 0.006	
CHARACTERISTIC SYMBOLS			
<input type="checkbox"/>	DESIGNATES SIGNIFICANT CHARACTERISTIC TO BE MONITORED PER CONTROL PLAN.	<input type="checkbox"/>	DESIGNATES CRITICAL CHARACTERISTIC TO BE MONITORED PER CONTROL PLAN.
<input checked="" type="checkbox"/>	DESIGNATES SIGNIFICANT CHARACTERISTIC TO BE MONITORED PER CONTROL PLAN USING ATTRIBUTE GAUGING METHODS.	<input checked="" type="checkbox"/>	DESIGNATES CRITICAL CHARACTERISTIC TO BE MONITORED PER CONTROL PLAN USING ATTRIBUTE GAUGING METHODS.
<input checked="" type="checkbox"/>	DESIGNATES SIGNIFICANT CHARACTERISTIC TO BE MONITORED PER CONTROL PLAN USING VARIABLE GAUGING METHODS.	<input checked="" type="checkbox"/>	DESIGNATES CRITICAL CHARACTERISTIC TO BE MONITORED PER CONTROL PLAN USING VARIABLE GAUGING METHODS.
<input type="checkbox"/>	DESIGNATES CHARACTERISTIC TO BE CHECKED AT INITIAL/SUBSEQUENT CUSTOMER PART SUBMISSION (ONE TIME CAPABILITY)	<input type="checkbox"/>	DESIGNATES CRITICAL CHARACTERISTIC TO BE MONITORED PER CONTROL PLAN USING VARIABLE MEASUREMENT OR GAUGING METHOD

SW UPDATE TO V1.05					
REV	ECO No.	DRAWN	CHECKED	APPROVED	DATE
6	5470891	ABORGET	B.SHAFER		12DEC11
EXPLODED VIEW RESISTOR VALUE CHANGE FOR BACKLIGHTING					
REV	ECO No.	DRAWN	CHECKED	APPROVED	DATE
5	5377510	B.SHAFER	ABORGET		08NOV11
4A EXPLODED VIEW LED COLOR CHANGE RESISTOR VALUE CHANGE CAP CHANGE ON PCB ASM					
REV	ECO No.	DRAWN	CHECKED	APPROVED	DATE
4	5293599	B.SHAFER	ABORGET		26AUG11
CORRECTION TO PCB ASM BOM ADDED SAFETY TRIANGLES					
NOTES					
REV	ECO No.	DRAWN	CHECKED	APPROVED	DATE
3	5076498	B.SHAFER	ABORGET		20JUN11
ADDED LONG TRAVEL SWITCH UPDATED PCB ROUTER POSITIONS					
REV	ECO No.	DRAWN	CHECKED	APPROVED	DATE
2	5034451	ABORGET	B.SHAFER		06MAY11
RELEASE FOR PRODUCTION					
REV	ECO No.	DRAWN	CHECKED	APPROVED	DATE
1	4882063	ABORGET	B.SHAFER		07MAR11
REVISION HISTORY					
© Copyright 2011 Johnson Controls, Inc. All rights reserved. Any unauthorized use or copying is strictly prohibited.					
Confidential and Proprietary to Johnson Controls, Inc. Disclosure of any confidential/proprietary information contained in this document/material without the express written permission of Johnson Controls, Inc. is strictly prohibited.					
NAME					
ELEC ASM.PF HMLK5 MY12					
APP CODE	MASS	SCALE	PART No.	REV	
	.0195 Kg	1:1	2278107	6	
DATA FORMAT					
CATIA V5					
SIZE	PROGRAM No.	SHEET	DWG No.	REV	
C		1 OF 1	2278107	6	
CUSTOMER					