

PATENT GROUP:

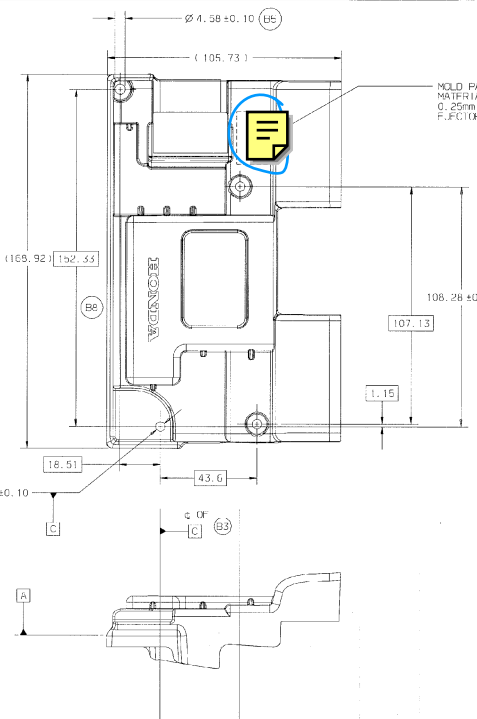
G



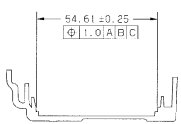
MODEL#/FCC ID: CB2ACTLHL4  
IC: 279B-ACTLHL4

ADDITIONAL PATENTS PENDING

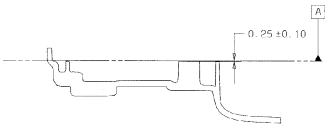
1.500 [38.10]



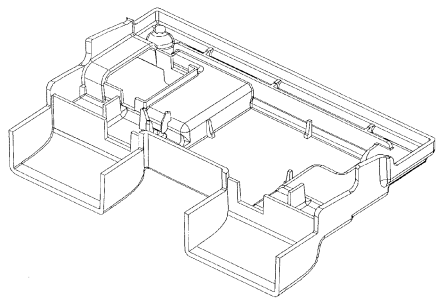
MOLD PART NUMBER, TOOL NUMBER AND MATERIAL RECYCLING CODE PER J1344 IN 0.25mm RAISED LETTERS X 3.0mm TALL ON FUNCTION SURFACE IN NON-FUNCTIONAL AREA



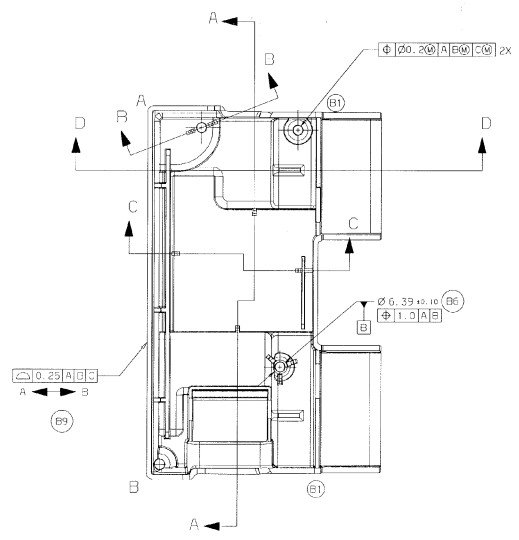
SECTION C-C



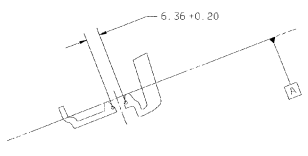
SECTION D-D



ISO VIEW FOR REFERENCE ONLY



SECTION A-A



SECTION B-B

REV	DATE	DESCRIPTION	BY	DATE	CHK
A		RELEASE FOR PRODUCTION	66645 TMS	09OCT02	RA
B1	01	MODIFIED RIB HEIGHT (2X)	66688 CDP	29OCT02	RA
D2	01	REMOVED DATUM D			
B3	07	PLACED DATUM C IN CORRECT LOCATION			
F4	01	CHANGED DATUM A AND RELATED DIMENSIONS TO MATCH BUILD CONDITION			
B6	F7	REMOVED GD&T CALLOUT AND DATUM CALLOUT			
B6	B7	CHANGED LOCATION OF DATUM B			
D7	E6	ADDED 108.28 DIM AND SC			
B8	E6	REMOVED ONE TIME CAPABILITY CALLOUT			
F9	AB	ADDED SURFACE PROFILE CALLOUT			

▽	DESIGNATES CRITICAL CHARACTERISTIC TO BE MONITORED PER CONTROL PLAN USING ATTRIBUTE GAGING METHODS.
▽	DESIGNATES CRITICAL CHARACTERISTIC TO BE MONITORED PER CONTROL PLAN USING VARIABLE MEASUREMENT OR GAGING METHOD.
▽	DESIGNATES CRITICAL CHARACTERISTIC TO BE MONITORED PER CONTROL PLAN USING VARIABLE MEASUREMENT OR GAGING METHOD.
▽	DESIGNATES SIGNIFICANT CHARACTERISTIC TO BE MONITORED PER CONTROL PLAN USING ATTRIBUTE GAGING METHODS.
▽	DESIGNATES SIGNIFICANT CHARACTERISTIC TO BE MONITORED PER CONTROL PLAN USING VARIABLE MEASUREMENT OR GAGING METHOD.
▽	DESIGNATES CHARACTERISTIC TO BE CHECKED AT INITIAL / SUBSEQUENT CUSTOMER PART SUBMISSION (ONE TIME CAPABILITY).
MOLDED PART STD. UNLESS OTHERWISE SPECIFIED	
③	THIRD ANGLE PROJECTION ASME Y14.5M 1994
1. DIMENSIONS ARE IN MILLIMETERS.	
2. ELECTRONIC FORMAT IS DATA MASTER.	
3. DIMENSIONS UNLESS OTHERWISE SPECIFIED ARE TO MATCH THE END MODEL WITHIN THE 2ND COMMERCIAL HOLDING TOLERANCES (1993 STANDARD) AND INDICATED FROM DATUMS.	
4. POINTS MUST BE FREE OF SHARP EDGES AND OTHER IMPERFECTIONS THAT ADVERSELY AFFECT FUNCTION, FIT, OR APPEARANCE.	
5. LOCATION OF DIMS, EDGES, POINTS ETC. TO BE INDICATED BY PRODUCT ENGINEERING PRIOR TO TOOLING.	

JOHNSON CONTROLS			
AUTOMOTIVE SYSTEMS GROUP INTERIORS			
SPECIFICATIONS			
PERFORMANCE	FMVSS 302 AND HES C-205		
MATERIAL	EM3110 R ACK		
FINISH	NONE		
NAME: HOUSING - PCB			
DESIGN/ENGINEER	2004 SEPA/HONDA		
REV. NO.	REV.	DESIGN ENG.	DATE
VR2815	B	TCCD SCHMITZ	05OCT02
PART NO. (LTD)	REV.	CHKD. ENG.	DATE
-	-	ERIAN LAUNER	09OCT02
SCALE	1:1	CHKD. ENGR.	DATE
-	-	RANDY ARENDS	09OCT02
SIZE	TOOL NO. REF.	NO. OF	SHEET 1 OF 1
D	R50076	VR2815	D
CAT. A			