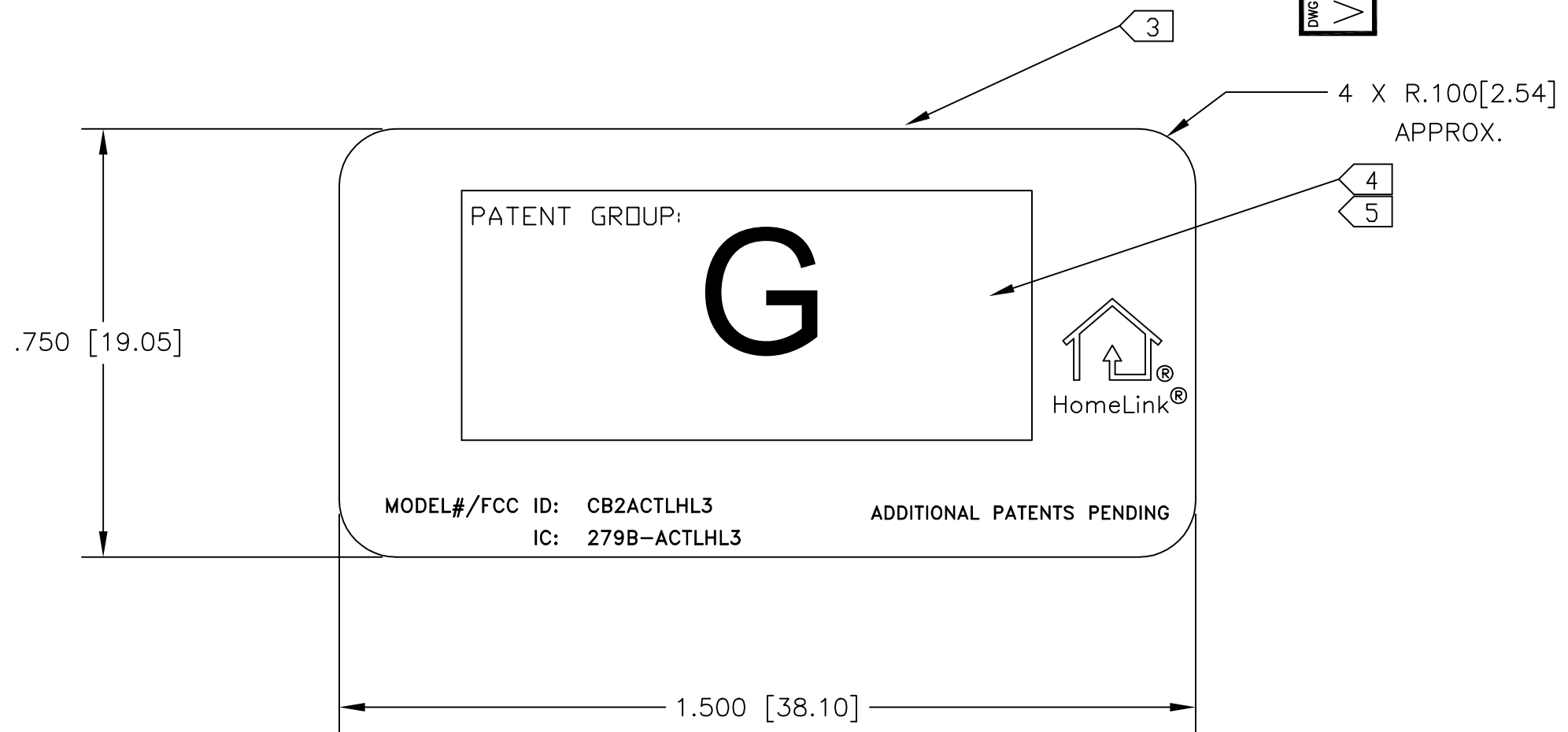


DWG. NO. VT3216



NOTES:

1. MATERIAL – HIGH TEMPERATURE POLYESTER (WHITE).
2. WHEN THIS LABEL IS PLACED ON ANY PRODUCT MANUFACTURED IN MEXICO, IT MUST BEAR THE WORDS "MADE IN MEXICO". THE LOCATION OF "MADE IN MEXICO" SHALL BE AT THE DISCRETION OF THE ASSEMBLER SO AS TO MAKE THE BEST USE OF THE SPACE AVAILABLE.
3. ASSEMBLER IS TO PRINT LABEL INFORMATION AS SHOWN.
4. REFER TO LATEST REVISION FOR DRAWING VJ0245 FOR ACTUAL PATENT NUMBERS OF THE PATENT GROUP IDENTIFIED.
5. LAY OUT PATENT NUMBERS TO FILL SPACE AVAILABLE, BUT NATION / ORGANIZATION OF ORIGIN HEADINGS MUST BE MAINTAINED FOR CORRESPONDING PATENT NUMBERS AS SHOWN ON LATEST REVISION OF DRAWING VJ0245.

REVISION BLOCK

REV	SH/ ZONE	DESCRIPTION	P.C.N.	BY	DATE	BY
A		RELEASE FOR PRODUCTION	68001	BS	25FEB03	EDICT
B		ADD HOMELINK LOGO	68274	BS	24MAR03	EDICT
C		MODEL#/FCC ID: WAS FCC ID:	68377	BS	14APR03	EDICT

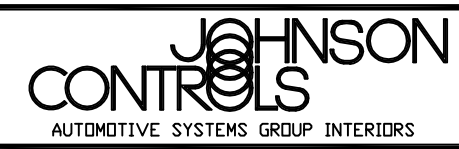
THIRD ANGLE PROJECTION

DO NOT SCALE

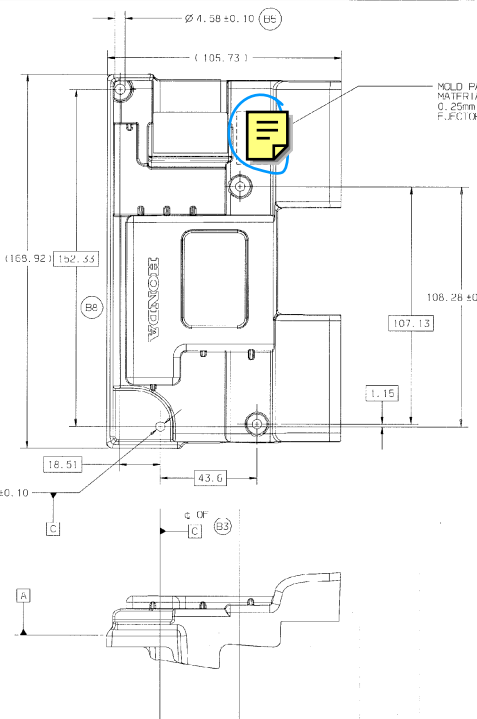
UNLESS OTHERWISE SPECIFIED

.X	DECIMAL	± .040 [1.0]	ANGULAR	± 2° 0'
.XX	DECIMAL	± .020 [.50]	DRAFT ANGLES	NOTED
.XXX	DECIMAL	± .006 [.150]		

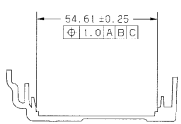
DIMENSIONS ARE INCHES WITH EQUIVALENT MILLIMETERS SHOWN IN BRACKETS.



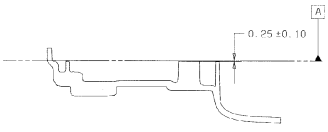
NAME				LABEL, BAR/PAT			
PROJECT		DRWN. BY		DATE			
04 TL HMLK III		B. SUNNERVILLE		25FEB03			
		CHKD. BY		DATE			
		A. DENBOW		25FEB03			
CUSTOMER		ENGR. APPR		DATE			
ACURA		A. VONDERWELL		25FEB03			
		SCALE		SHEET 1 OF 1			
		4/1					
SIZE	TOOL NO. REF	DWG. NO.		REV.			
B		VT3216		C			
DATA FORMAT							
ACAD							



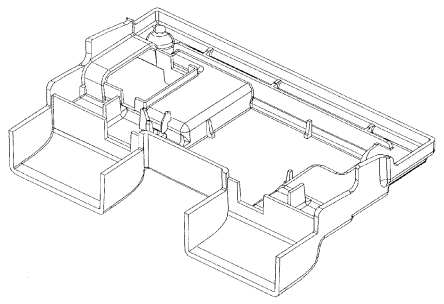
MOLD PART NUMBER, TOOL NUMBER AND MATERIAL RECYCLING CODE PER J1344 IN 0.25mm RAISED LETTERS X 3.0mm TALL ON FUNCTION SURFACE IN NON-FUNCTIONAL AREA



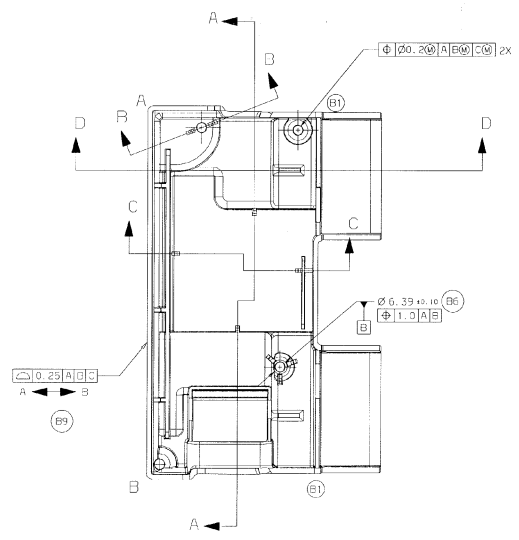
SECTION C-C



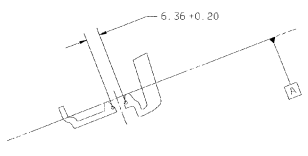
SECTION D-D



ISO VIEW FOR REFERENCE ONLY



SECTION A-A



SECTION B-B

▽	DESIGNATES CRITICAL CHARACTERISTIC TO BE MONITORED PER CONTROL PLAN USING ATTRIBUTE GAGING METHODS.
▽	DESIGNATES CRITICAL CHARACTERISTIC TO BE MONITORED PER CONTROL PLAN USING VARIABLE MEASUREMENT OR GAGING METHOD.
▽	DESIGNATES CRITICAL CHARACTERISTIC TO BE MONITORED PER CONTROL PLAN USING ATTRIBUTE GAGING METHODS.
▽	DESIGNATES CRITICAL CHARACTERISTIC TO BE MONITORED PER CONTROL PLAN USING VARIABLE MEASUREMENT OR GAGING METHOD.
▽	DESIGNATES SIGNIFICANT CHARACTERISTIC TO BE MONITORED PER CONTROL PLAN USING ATTRIBUTE GAGING METHODS.
▽	DESIGNATES SIGNIFICANT CHARACTERISTIC TO BE MONITORED PER CONTROL PLAN USING VARIABLE MEASUREMENT OR GAGING METHOD.
▽	DESIGNATES CHARACTERISTIC TO BE CHECKED AT INITIAL / SUBSEQUENT CUSTOMER PART SUBMISSION (ONE TIME CAPABILITY).
MOLDED PART STD. UNLESS OTHERWISE SPECIFIED	
③	THIRD ANGLE PROJECTION ASME Y14.5M 1994
1. DIMENSIONS ARE IN MILLIMETERS. 2. ELECTRONIC FORMAT IS DATA MASTER. ALL DIMENS MEASURED DATA IS TO BE TAKEN FROM THE NOMINAL MODEL FILE AT ITS LATEST REVISION LEVEL. UNDIMENSIONED FEATURES ARE TO MATCH THE CAD MODEL WITHIN 0.25mm UNLESS INDICATED BY THE 2ND COMMERICAL HOLDING TOLERANCES (1993 STANDARD) AS NOTED FROM DATUMS. 3. PARTS MUST BE FREE OF SHARP EDGES AND OTHER IMPERFECTIONS THAT ADVERSELY AFFECT FUNCTIONAL FIT OR PERFORMANCE. 4. LOCATION OF DIMS, EDGE FINISH ETC. TO BE APPROVED BY PRODUCT ENGINEERING PRIOR TO TOOLING.	

CP# CO#F		REVISION BLOCK			
REV	SYZ	DESCRIPTION	QY	DATE	DR
A		RELEASE FOR PRODUCTION	66645	TMS	09OCT02 RA
B1	A1	MODIFIED RIB HEIGHT (2X)	66688	CDP	29OCT02 RA
D2	D1	REMOVED DATUM D			
B3	D7	PLACED DATUM C IN CORRECT LOCATION			
F4	F1	CHANGED DATUM A AND RELATED DIMENSIONS TO MATCH BUILD CONDITION			
B5	F7	REMOVED GD&T CALLOUT AND DATUM CALLOUT			
B6	B7	CHANGED LOCATION OF DATUM B			
D7	E6	ADDED 108.28 DIM AND SC			
B8	E6	REMOVED ONE TIME CAPABILITY CALLOUT			
F9	A8	ADDED SURFACE PROFILE CALLOUT			

JOHNSON CONTROLS
AUTOMOTIVE SPECIALTY GROUP INTERIORS
SPECIFICATIONS

PERFORMANCE	FMVSS 302 AND HES C-205						
MATERIAL	EM3110 R ACK						
FINISH	NONE						
NAME	HOUSING - PCB						
DESIGN/ENGINEER	2004 SEPA/HONDA						
PART NO.	VR2815	REV.	B	DESIGN ENG.	TCCD SCHMITZ	DATE	05OCT02
PART NO. (OLD)	-	REV.	-	DRW. ENG.	BRIAN LAUNER	DATE	09OCT02
SCALE	1:1	CHKD.	RANDY ARENDS	DATE	09OCT02	SHEET 1 OF 1	
SIZE	D	TOOL NO. REF.	R50076	NO. IN	VR2815	REV.	D
DATE/FORM	CAT 1 A						

12715-VR2815-A-HOUSING-PCB