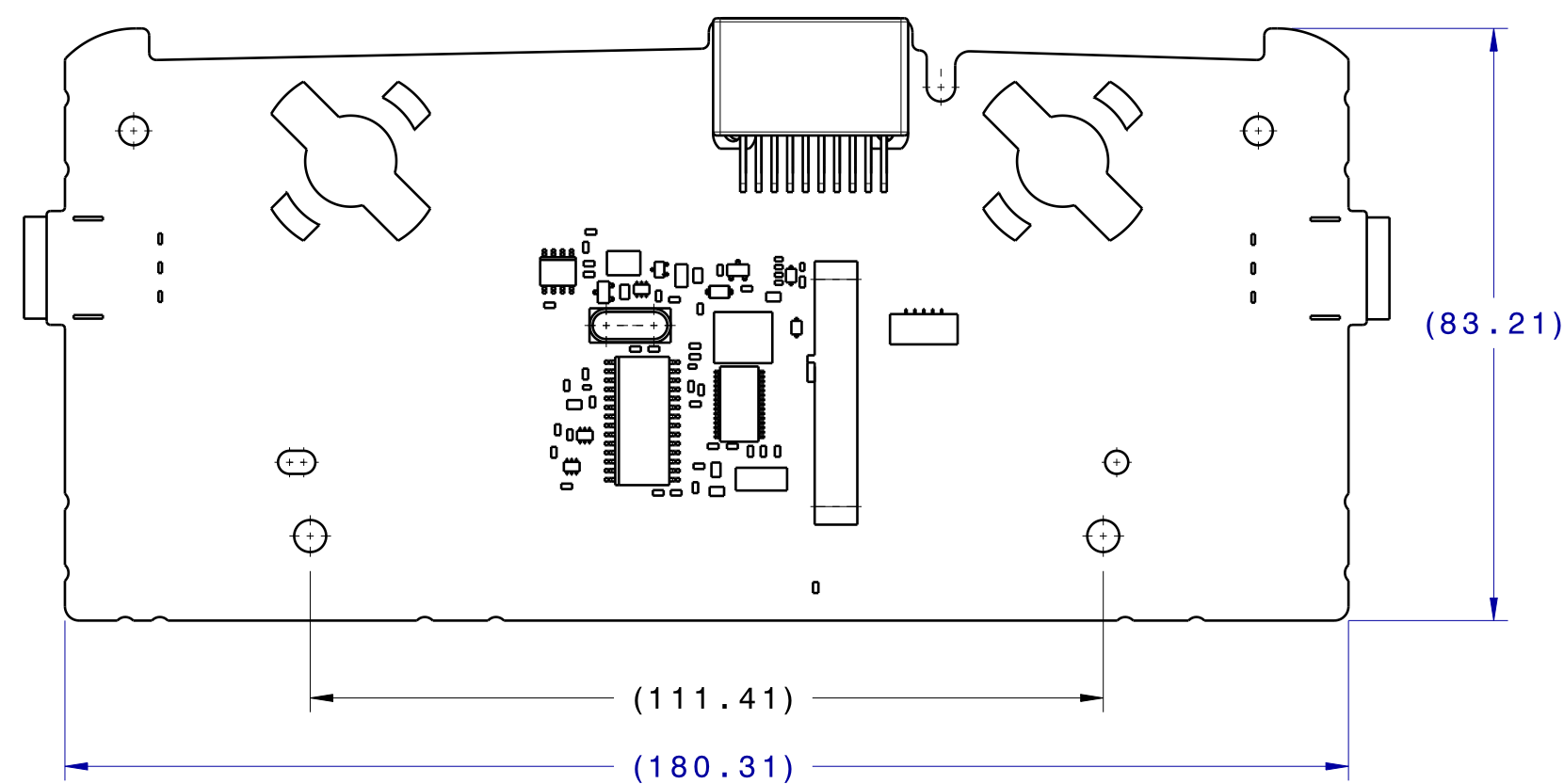
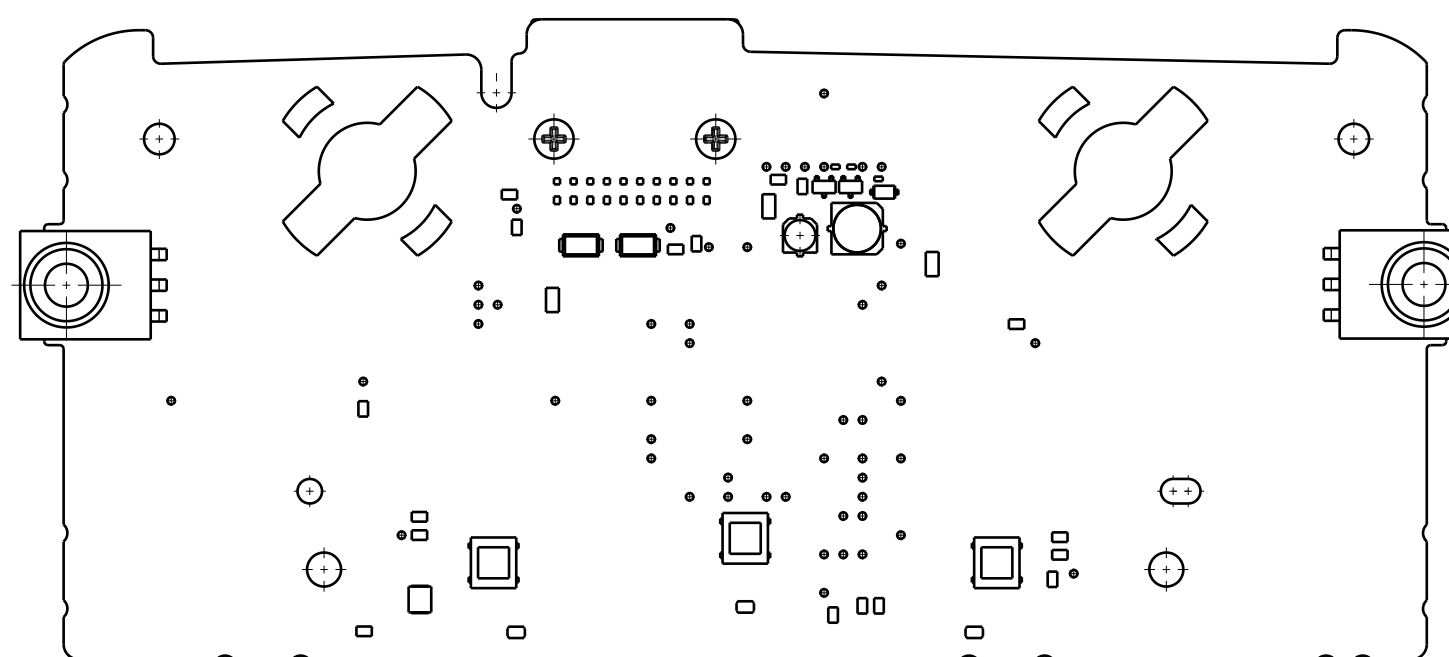


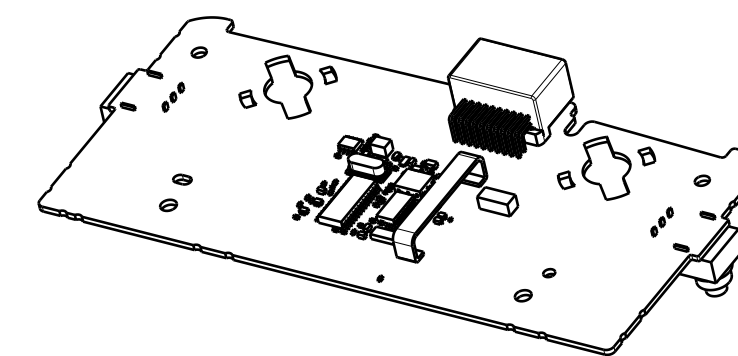
REV. NO.	REV. DATE	REV. BY	REV. REASON	REV. NO.	REV. DATE	REV. BY	REV. REASON
1	95		NEW ADOPTION	511WS0028	4665891	01DEC10	CL
A 2	95		NOTE CHANGE	511WF1589	4833660	23MAR11	CL



PLAN VIEW

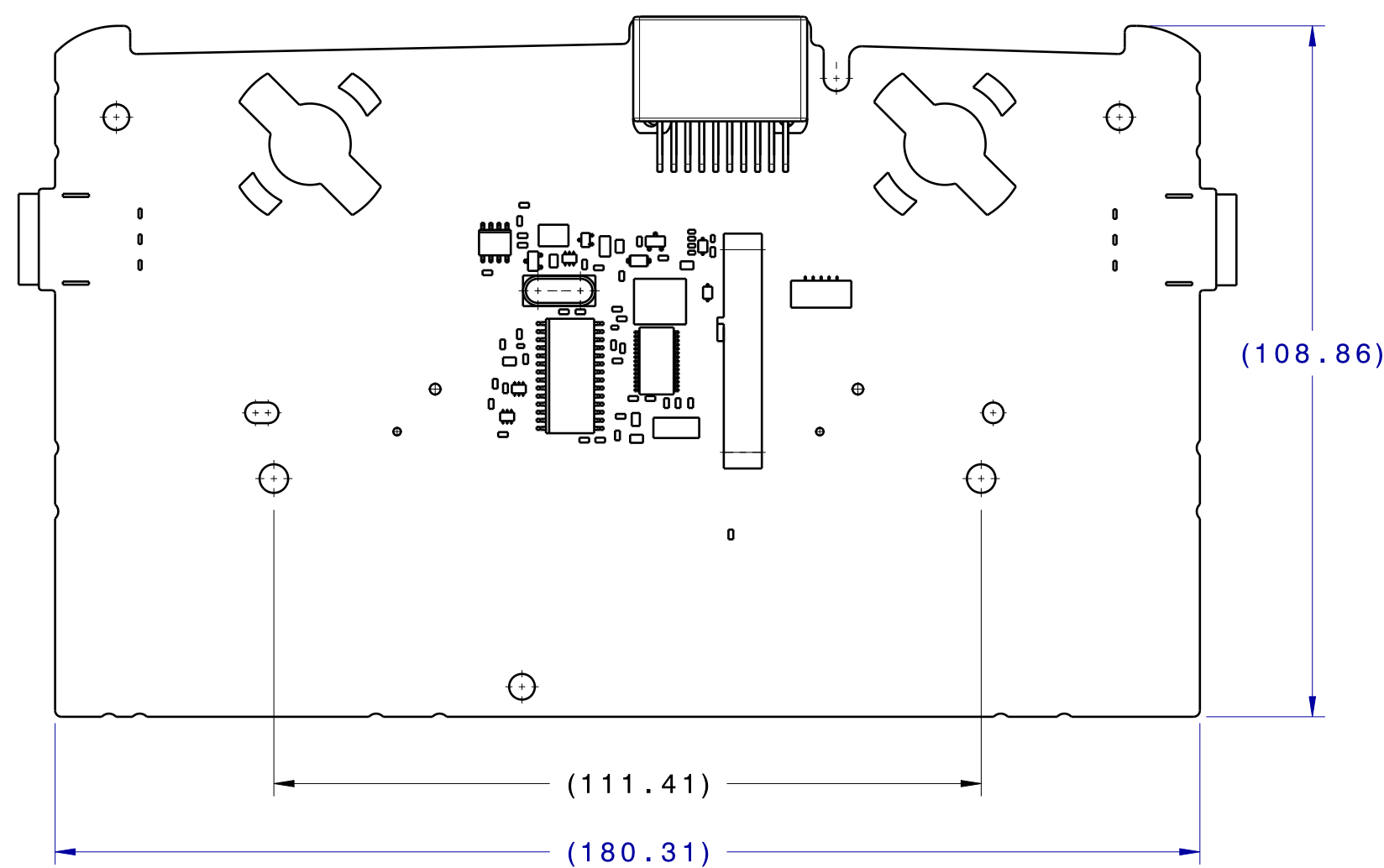


BOTTOM VIEW

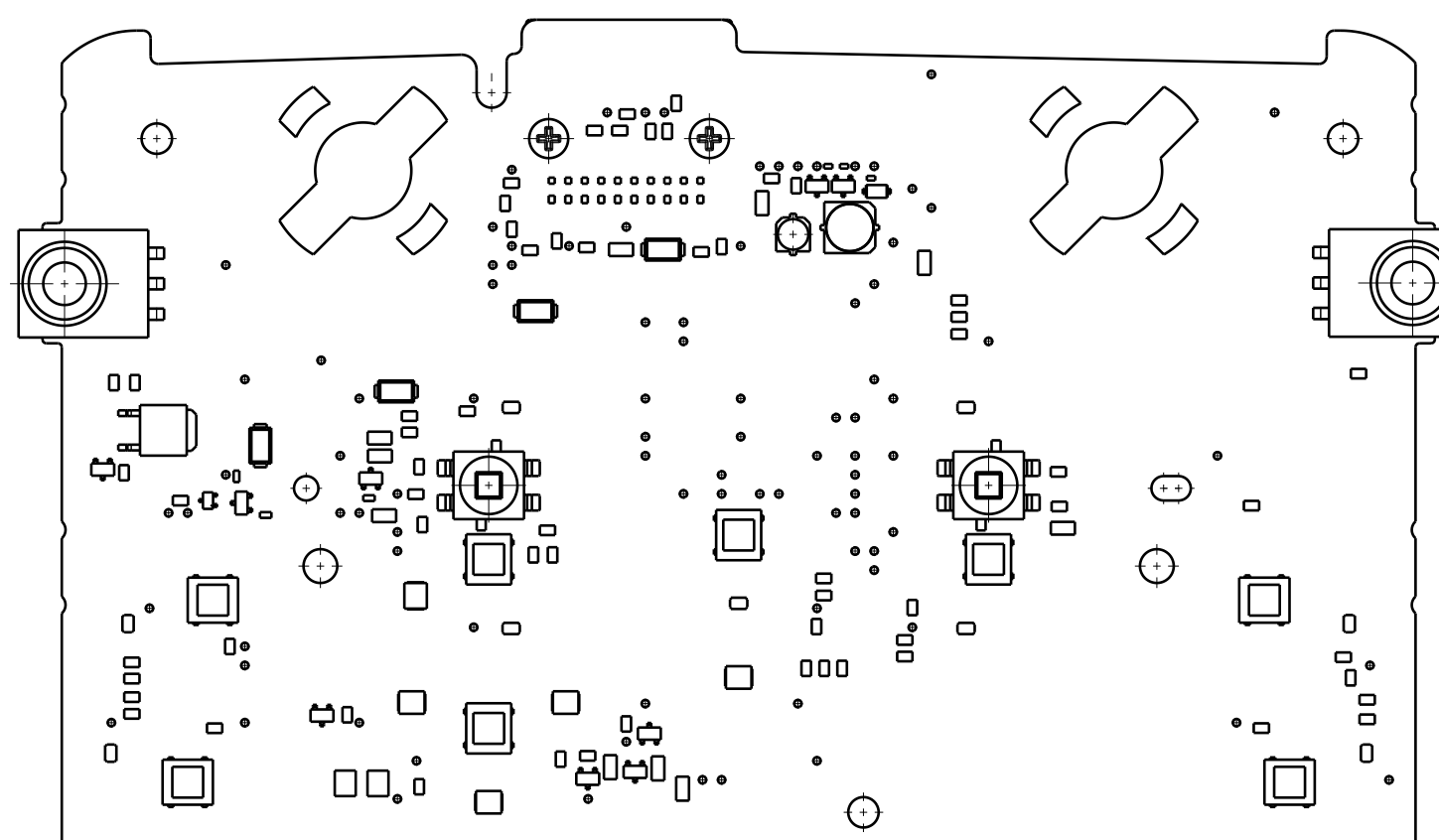


REFERENCE VIEW
SCALE: 1:2

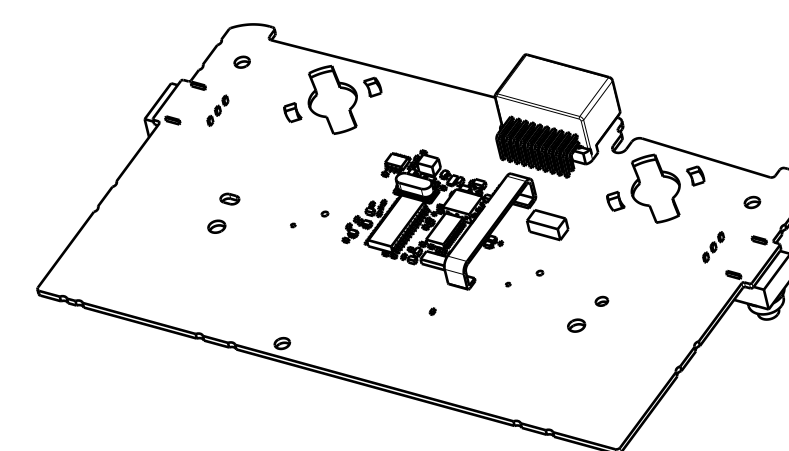
2058589 PCB ASM .051A NR UP



PLAN VIEW



BOTTOM VIEW



REFERENCE VIEW
SCALE: 1:2

2058592 PCB ASM .051A MR UP

Global Dwg.	Semi Global Dwg.	Local English Dwg.
<input type="checkbox"/>	<input type="checkbox"/>	<input type="checkbox"/>

APPROVED	APPROVED	CHECKED
<input type="checkbox"/>	<input type="checkbox"/>	<input type="checkbox"/>

DESIGN CROSS CHECK: JOHNSON CONTROLS NAGOYA OFFICE

BOX DOES NOT PRINT

2D BARCODE READS AS "051A0HC"

MOON ROOF

NOTE: LABEL IS APPLIED TO ROOF CONSOLE BOX

2D BARCODE READS AS "051A0HCNR"

NORMAL ROOF

FCC LABEL REFERENCE ONLY Scale: 2:1

Label for CB251AHL4NR / 279B-51AHL4NR

NOTES:

- ANY MATING COMPONENTS OR COMPONENTS IN CLOSE PROXIMITY TO THIS ASSEMBLY MUST BE FREE FROM ANY PERMANENT OR TEMPORARY MATERIALS (LUBRICANTS, CUTTING OILS, MOLD RELEASE, RUST INHIBITORS, FASTENER COATINGS, PVC, ETC.) THAT ARE INCOMPATIBLE WITH AMORPHOUS THERMOPLASTIC POLYMERS (PC, PC-BLENDS, ABS, PPO/PS, ETC.).
- THIS PART SHALL CONFORM TO SUB-PARAGRAPH "SUBSTANCE PROHIBITION AND RESTRICTION" IN TSZ0001G.

CAD DATA IS MASTER

DATA LEVEL	3	DATA PATTERN	0 : 2D ① : 3D+2D
------------	---	--------------	---------------------

SPECIFICATIONS

PERFORMANCE: SEE DWG

MATERIAL: .

FINISH: .

ELECTRONICS STD. UNLESS OTHERWISE SPECIFIED

THIRD ANGLE PROJECTION ASME Y14.5M 1994

DIMENSIONS ARE IN INCHES WITH EQUIVALENT MILLIMETERS SHOWN IN BRACKETS

X.X DECIMAL ± 0.040	ANGULAR ± 2°
X.XX DECIMAL ± 0.020	DRAFT ANGLES NOTED
X.XXX DECIMAL ± 0.006	

CHARACTERISTIC SYMBOLS

<input type="checkbox"/> DESIGNATES SIGNIFICANT CHARACTERISTIC TO BE MONITORED PER CONTROL PLAN.	<input type="checkbox"/> DESIGNATES CRITICAL CHARACTERISTIC TO BE MONITORED PER CONTROL PLAN.
<input type="checkbox"/> DESIGNATES SIGNIFICANT CHARACTERISTIC TO BE MONITORED PER CONTROL PLAN USING ATTRIBUTE GAUGING METHODS.	<input type="checkbox"/> DESIGNATES CRITICAL CHARACTERISTIC TO BE MONITORED PER CONTROL PLAN USING ATTRIBUTE GAUGING METHODS.
<input type="checkbox"/> DESIGNATES SIGNIFICANT CHARACTERISTIC TO BE MONITORED PER CONTROL PLAN USING VARIABLE GAUGING METHODS.	<input type="checkbox"/> DESIGNATES CRITICAL CHARACTERISTIC TO BE MONITORED PER CONTROL PLAN USING VARIABLE GAUGING METHODS.
<input type="checkbox"/> DESIGNATES CHARACTERISTIC TO BE CHECKED AT INITIAL / SUBSEQUENT CUSTOMER PART SUBMISSION (ONE TIME CAPABILITY).	<input type="checkbox"/> DESIGNATES CRITICAL CHARACTERISTIC TO BE MONITORED PER CONTROL PLAN USING VARIABLE MEASUREMENT OR GAUGING METHOD.

TOYOTA PART NAME		TOYOTA PART No.	
TRANSMITTER, GARAGE DOOR OPENER		89755-06040-A (1/6)	
RDDP No.	REVISION RECORD	MASS	MASS TOL
DSD6-0689	NOTE CHANGE	95 g	MB
APPROVED		CHECKED	
STAFF CODE: DSD60		TOYOTA MOTOR CORPORATION	
REVISION HISTORY			
<p>© Copyright 2010 Johnson Controls, Inc. All rights reserved. Any unauthorized use or copying is strictly prohibited.</p>			
<p>CONFIDENTIAL AND PROPRIETARY TO JOHNSON CONTROLS, INC. DISCLOSURE OF ANY CONFIDENTIAL/PROPRIETARY INFORMATION CONTAINED IN THIS DOCUMENT/MATERIAL WITHOUT THE EXPRESS WRITTEN PERMISSION OF JOHNSON CONTROLS, INC. IS STRICTLY PROHIBITED.</p>			
HMLK.TOYOTA CUSTOMER			
CPP CODE	MASS	SCALE	PART No.
N/A	95g	1:1 (1:2) (2:1)	.
DATA FORMAT	CATIA V5		
SIZE	PROGRAM No.	SHEET	DWG No.
A1	1010991	1 OF 6	2201931
CUSTOMER	TOYOTA		1