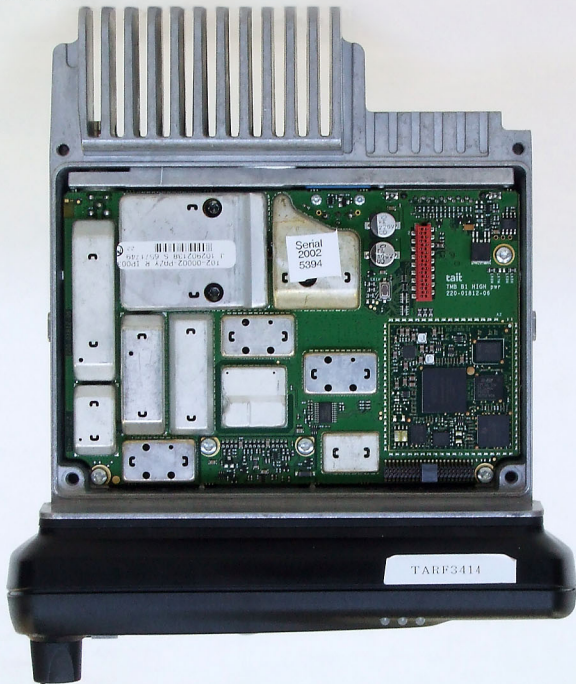


Teltest Report 3414 - 12 September 2012

Tait TMBB1B Mobile Transceiver

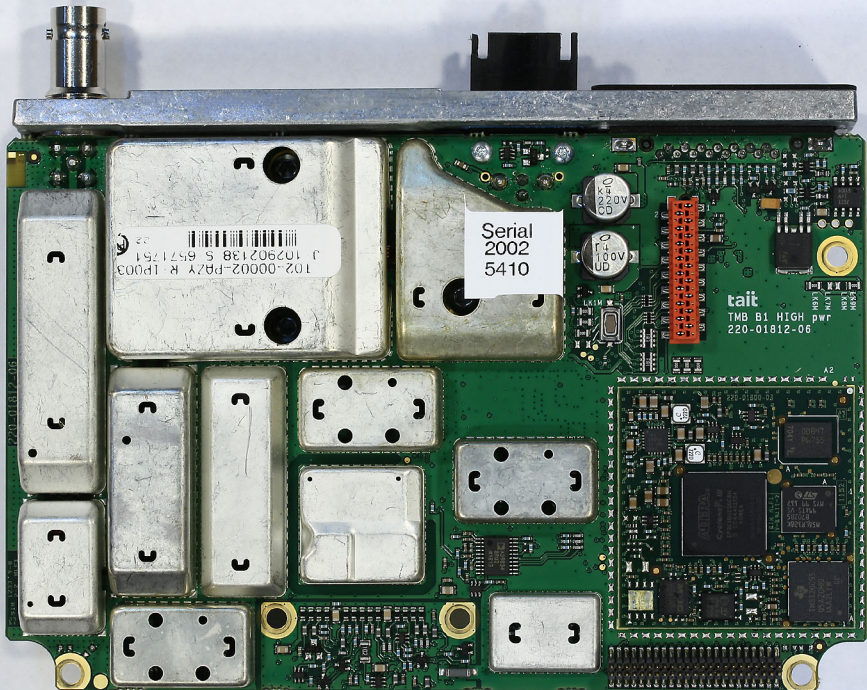
FCC ID: CASTMBB1B

IC: 737A-TMBB1B



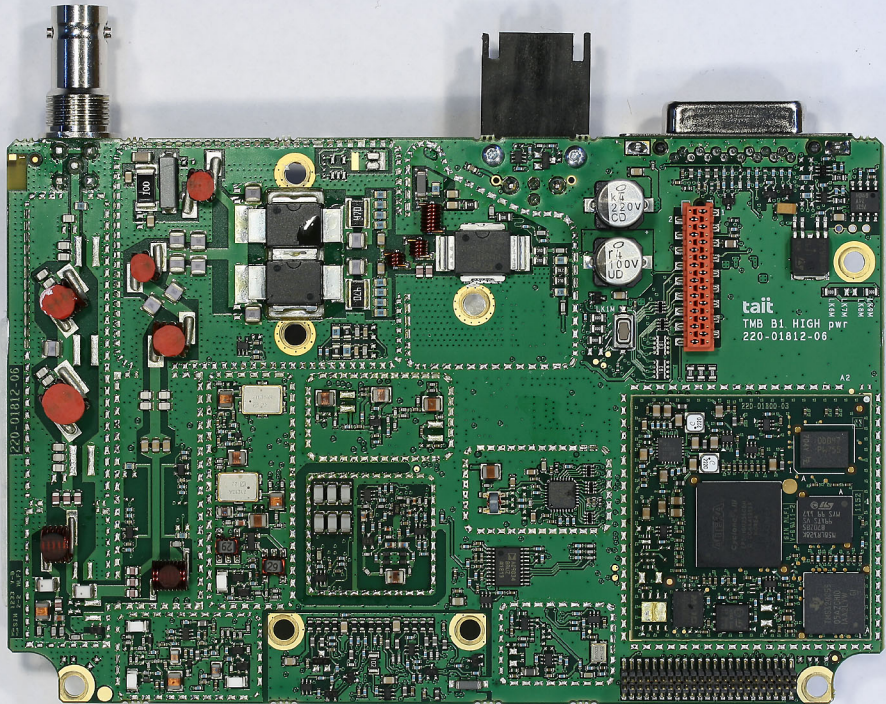
Internal - Top

Teltest Report 3414  
12 September 2012  
Tait TMBB1B  
Mobile Transceiver  
FCC ID: CASTMBB1B  
IC: 737A-TMBB1B



Internal - Top - PCB

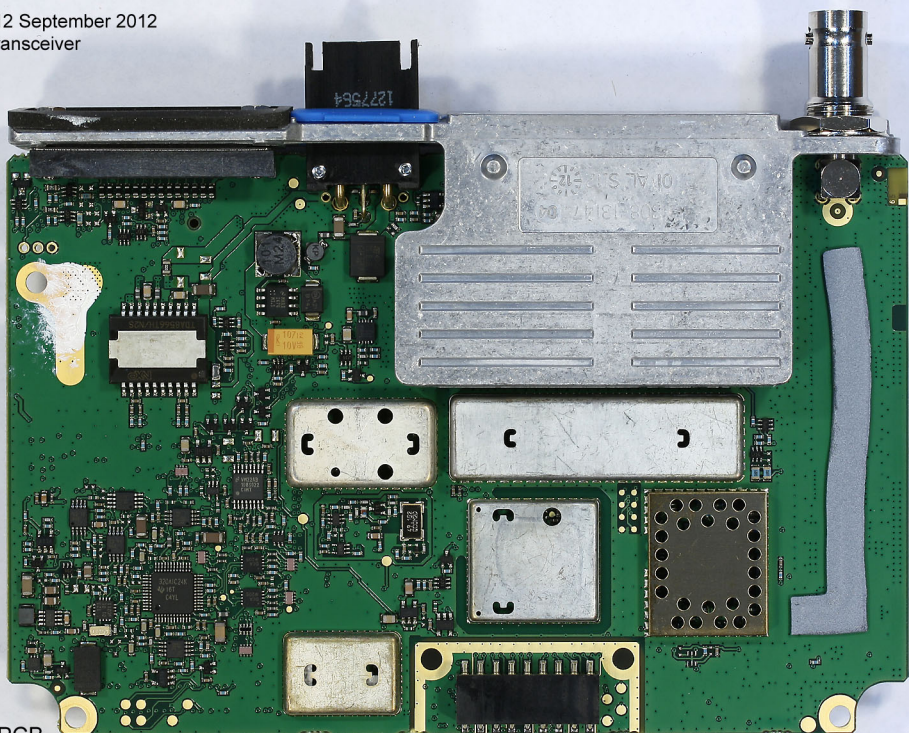
Teltest Report 3414  
12 September 2012  
Tait TMBB1B  
Mobile Transceiver  
FCC ID: CASTMBB1B  
IC: 737A-TMBB1B



Internal - Top - PCB - Cans Removed



Teltest Report 3414 - 12 September 2012  
Tait TMBB1B Mobile Transceiver  
FCC ID: CASTMBB1B  
IC: 737A-TMBB1B



Internal - Bottom - PCB

Teltest Report 3414 - 12 September 2012

Tait TMBB1B Mobile Transceiver

FCC ID: CASTMBB1B

IC: 737A-TMBB1B



Internal - Bottom - PCB - Cans Removed

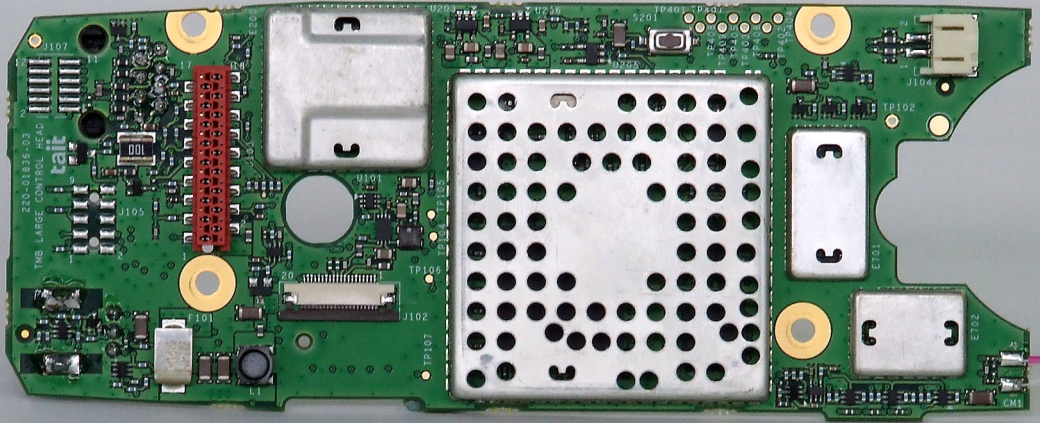
Teltest Report 3414 - 12 September 2012

Tait TMBB1B Mobile Transceiver



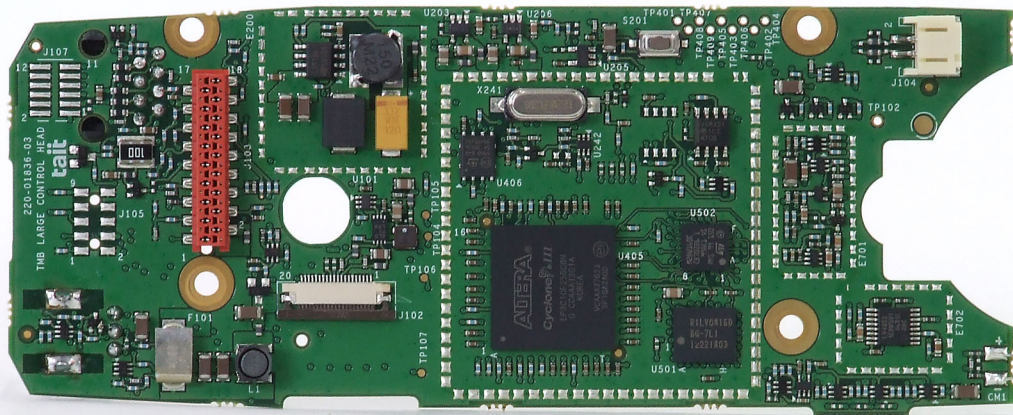
Internal - Control Head - Front Panel - Rear





Internal - Control Head - Circuit Board - Component Side

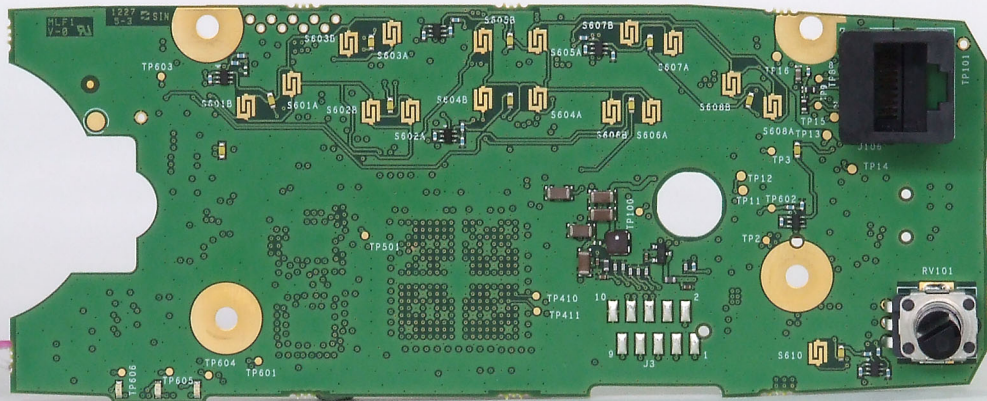
Teltest Report 3414 - 12 September 2012  
Tait TMBB1B Mobile Transceiver



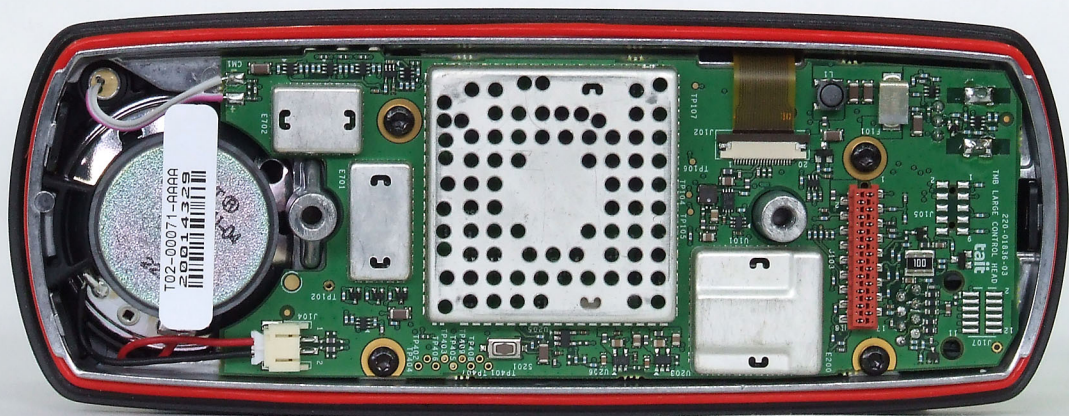
Internal - Control Head - Circuit Bd - Component Side (without cans)



Teltest Report 3414 - 12 September 2012  
Tait TMBB1B Mobile Transceiver



Internal - Control Head - Circuit Board - Copper Side



Internal - Control Head - Rear (With Cover Removed)