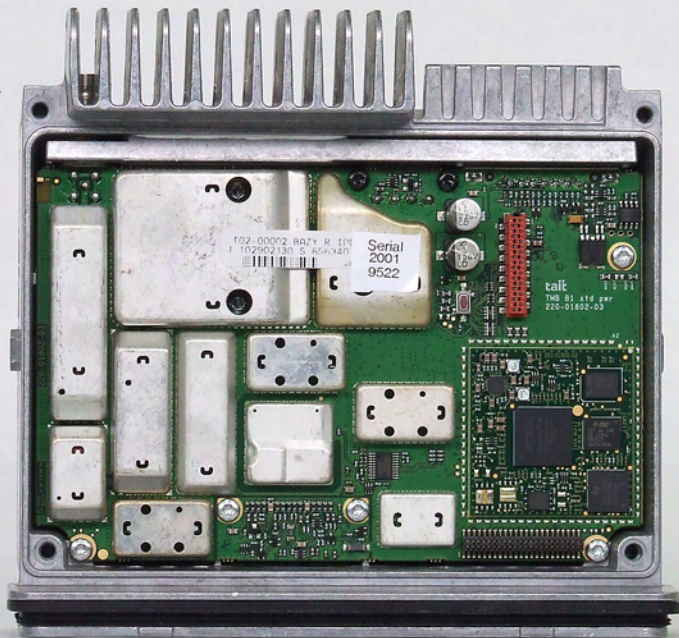


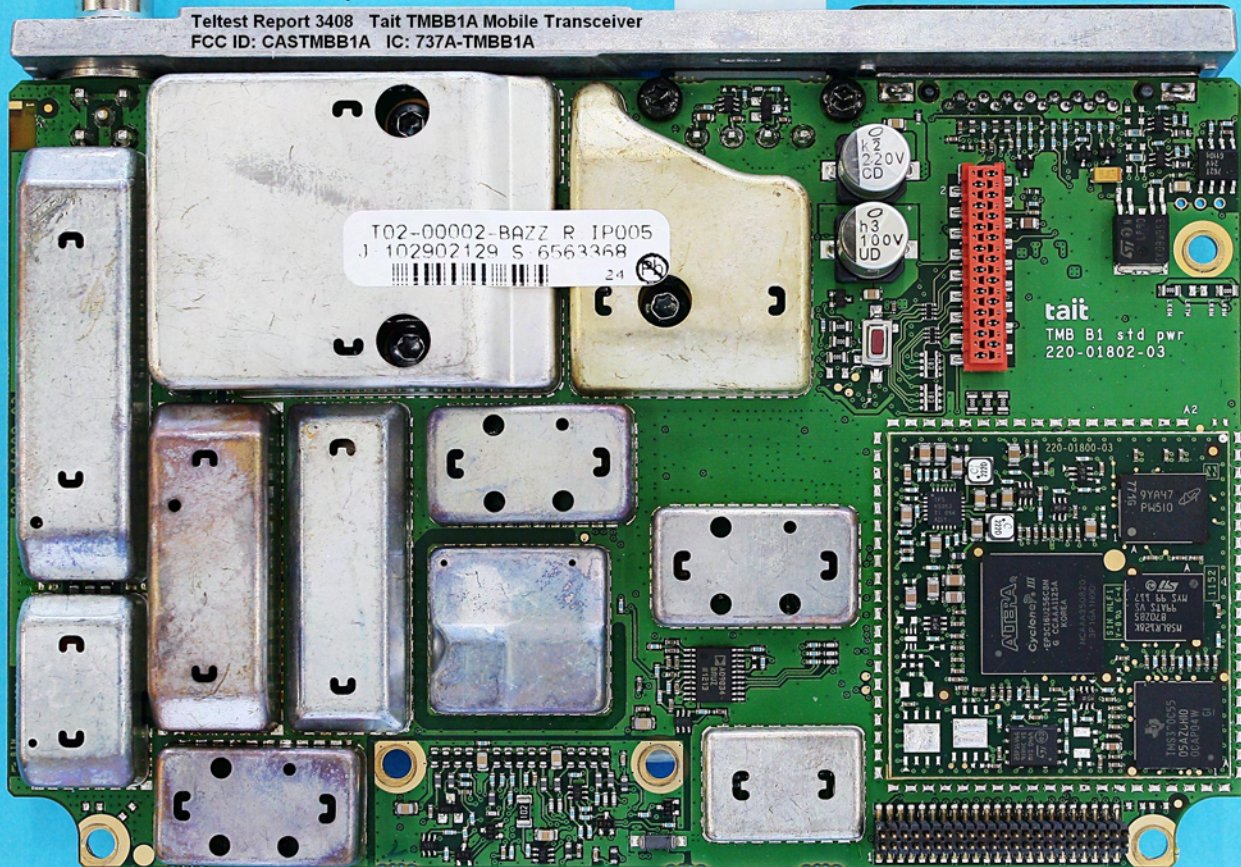
Teltest Report 3408
6 September 2012
Tait TMBB1A
Mobile Transceiver
FCC ID: CASTMBB1A
IC: 737A-TMBB1A



Internal - Top

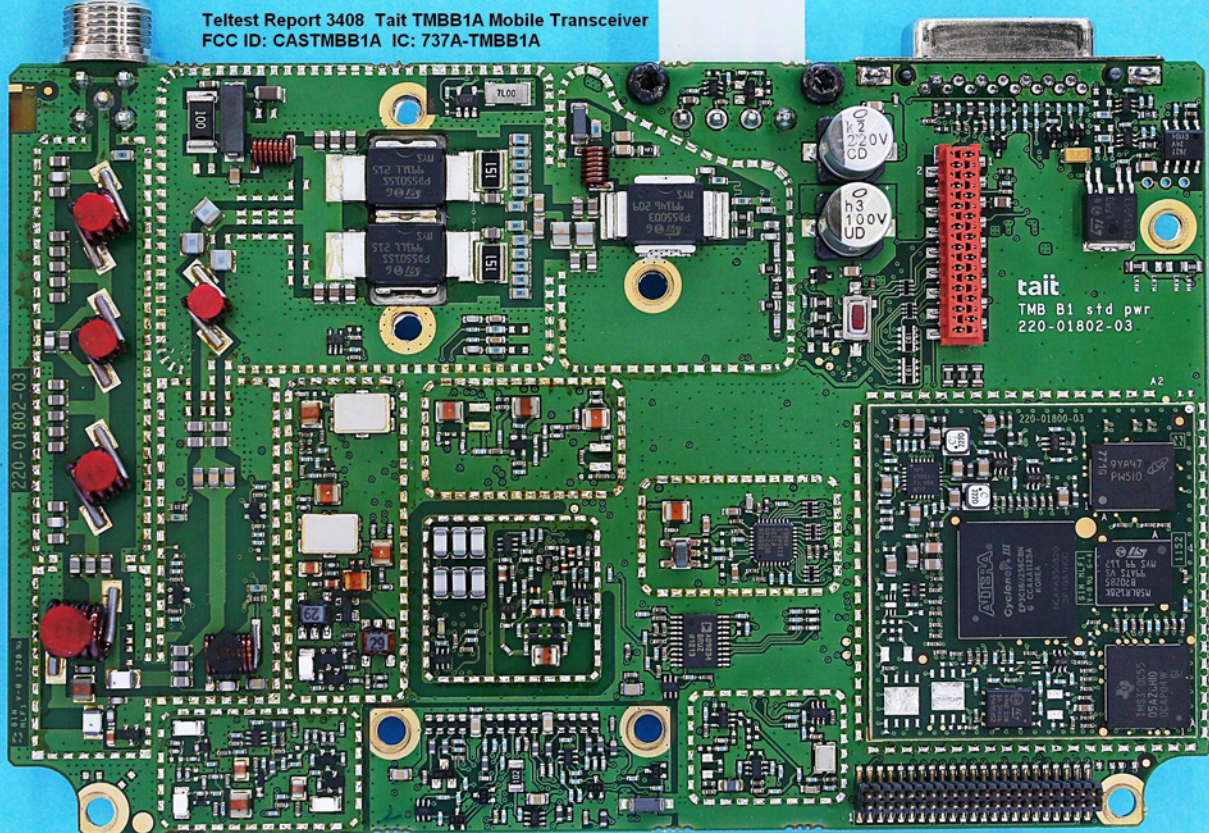
6th September 2012

Teltest Report 3408 Tait TMBB1A Mobile Transceiver
FCC ID: CASTMBB1A IC: 737A-TMBB1A



Internal - Main RF Board Top With Cans

Teltest Report 3408 Tait TMBB1A Mobile Transceiver
FCC ID: CASTMBB1A IC: 737A-TMBB1A

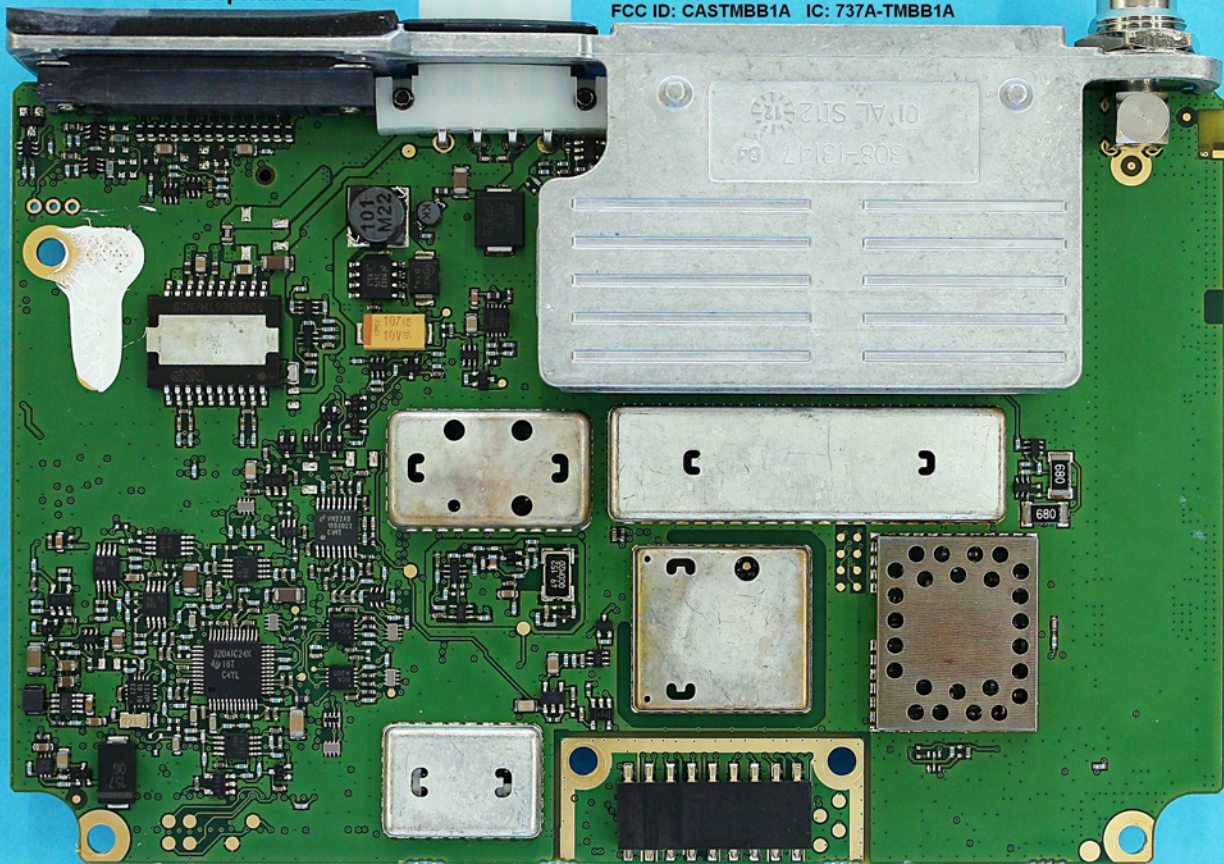


Internal - Main RF Board Top No Cans

6th September 2012

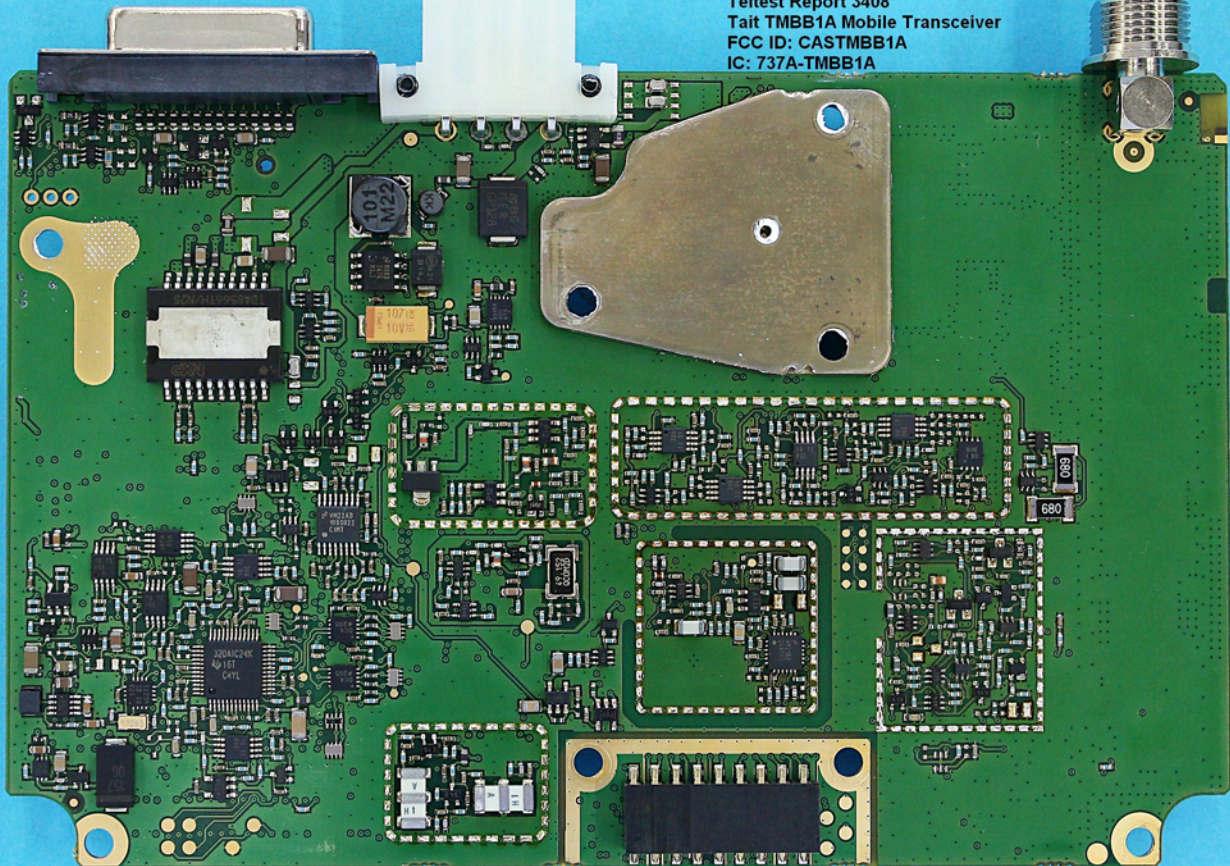
6th September 2012

Teltest Report 3408 Tait TMBB1A Mobile Transceiver
FCC ID: CASTMBB1A IC: 737A-TMBB1A



Internal - Main RF Board Bottom With Cans

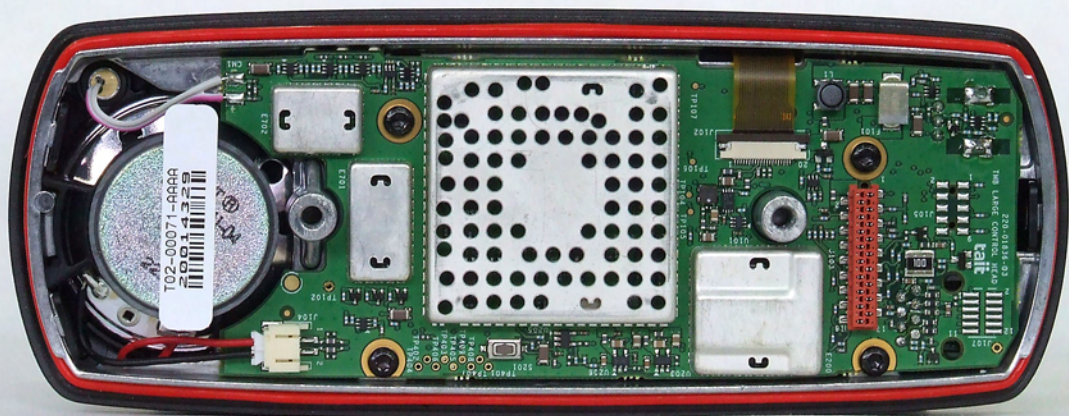
Teltest Report 3408
Tait TMBB1A Mobile Transceiver
FCC ID: CASTMBB1A
IC: 737A-TMBB1A



6th September 2012

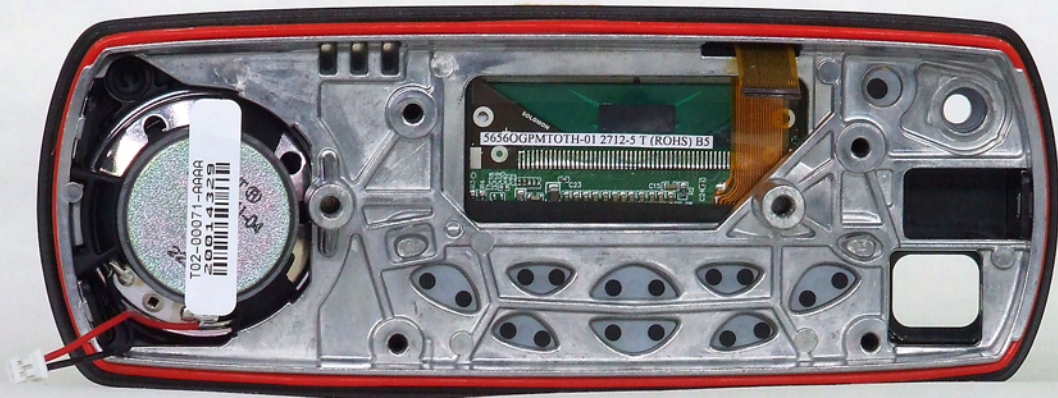
Internal - Main RF Board Bottom No Cans

Teltest Report 3408 - 6 September 2012
Tait TMBB1A Mobile Transceiver
FCC ID: CASTMBB1A
IC: 737A-TMBB1A



Internal - Control Head - Rear (With Cover Removed)

Teltest Report 3408 - 6 September 2012
Tait TMBB1A Mobile Transceiver
FCC ID: CASTMBB1A
IC: 737A-TMBB1A



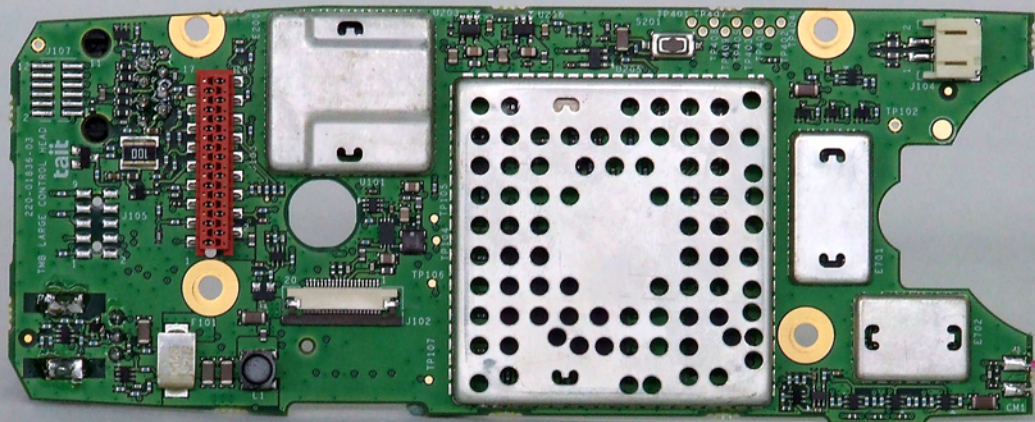
Internal - Control Head - Front Panel - Rear

Teltest Report 3408 - 6 September 2012

Tait TMBB1A Mobile Transceiver

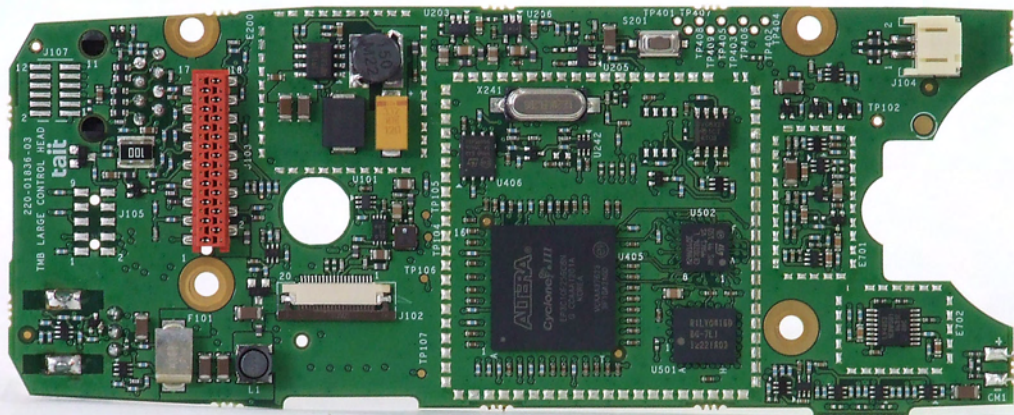
FCC ID: CASTMBB1A

IC: 737A-TMBB1A



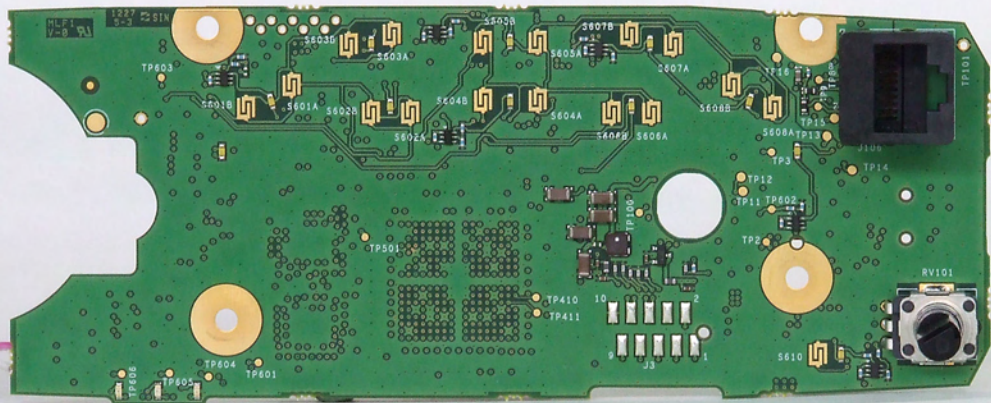
Internal - Control Head - Circuit Board - Component Side

Teltest Report 3408 - 6 September 2012
Tait TMBB1A Mobile Transceiver
FCC ID: CASTMBB1A
IC: 737A-TMBB1A



Internal - Control Head - Circuit Bd - Component Side (without cans)

Teltest Report 3408 - 6 September 2012
Tait TMBB1A Mobile Transceiver
FCC ID: CASTMBB1A
IC: 737A-TMBB1A



Internal - Control Head - Circuit Board - Copper Side