

## 7 PCB Information

This Section provides parts lists, circuit diagrams and component location information on the individual PCBs within the T2000 Series II radio.

The following PCBs are covered within this Section:

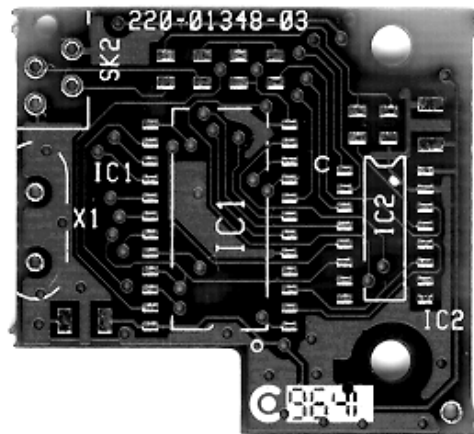
Section	Title	Page	Frequency (MHz)
7.1	T2000-100 RF PCB	IPN 220-01331-02 7.1.1	220 to 270
7.2	T2000-200 RF PCB	IPN 220-01202-10 7.2.1	66 to 88
7.3	T2000-300 RF PCB	IPN 220-01314-01 IPN 220-01314-05 7.3.1 7.3.11	136 to 174
7.4	T2000-400 RF PCB	IPN 220-01204-11 7.4.1	175 to 225
7.5	T2000-500/-600 RF PCB	IPN 220-01205-14 IPN 220-01205-19 7.5.1 7.5.13	400 to 530
7.6	T2000-700/-900 RF PCB	IPN 220-01289-01 IPN 220-01389-03 7.6.1 7.6.11	330 to 400
7.7	T2000-800 RF PCB	IPN 220-01305-03 7.7.1	800 to 870
7.8	T2000 IF PCB	IPN 220-01565-04 7.8.1	
7.9	T2000 TCXO /Tx Audio PCB	IPN 220-01657-01 7.9.1	
7.10	T2010 & T2015 HC05 Logic PCB	IPN 220-01377-01 IPN 220-01377-02 IPN 220-01377-03 7.10.1 7.10.11 7.10.23	
7.11	T2020, T203X, T2040, T2050 & T2060 HC11 Logic PCB	IPN 220-01344-02 IPN 220-01344-04 IPN 220-01344-07 7.11.1 7.11.13 7.11.25	
7.12	T2010/T2030 Control Head PCB	IPN 220-01319-01 7.12.1	
7.13	T2015/T2060 Control Head PCB	IPN 220-01320-01 7.13.1	
7.14	T2020/40 /50 Control Head PCB	IPN 220-01321-04 7.14.1	
7.15	T2035 Control Head PCB	IPN 220-01322-03 7.15.1	
7.16	T2000 EMC Filter PCB	IPN 220-01383-01 7.16.1	
7.17	T2000 Data Interface Decoupling PCB	IPN 220-01388-01 7.17.1	

## PCB Identification

All PCBs are identified by a unique 10 digit 'internal part number' (IPN), e.g. 220-01330-02, which is screen printed onto the PCB (usually the top side).

The last 2 digits of this number define the issue status, which starts at 00 and increments through 01, 02, 03, etc. as the PCB is updated. Some issue PCBs never reach full production status, and are therefore not included in this manual. A letter following the 10 digit IPN has no relevance in identifying the PCB for service purposes.

In the following diagram of the T2000-66 UART PCB, the IPN is 220-01348-03, (i.e. issue 03 of the PCB).



It is important that you identify which issue PCB you are working on so that you can refer to the appropriate PCB information.

## Parts Lists

The 10 digit numbers (000-00000-00) in the parts lists are 'internal part numbers' (IPNs). Your spare parts orders can be handled more efficiently if you quote the IPN and provide a brief description of the part.

The components listed in the parts lists are divided into two main types: those with a circuit reference (e.g. C201, D106, R121, etc.) and those without (mechanical and miscellaneous).

Those with a circuit reference are grouped in alphabetical order and then in numerical order within each group. Each component entry comprises three or four columns, as shown below.

Ref	VAR	IPN	Description
C401		014-07470-00	CAP TANT CHIP 4U7 3.5 X 2.8MM 267 SERI
C402		015-24100-08	CAP CER 0805 CHIP 1N 10% X7R 50V
C403		015-25100-08	CAP CER 0805 CHIP 10N 10% X7R 50V
&C404	3XXX	015-21180-01	CAP CER 0805 CHIP 1P8 +/-0.25 NPO 50V
&C404	4XXX	015-211220-01	CAP CER 0805 CHIP 2P2 +/-0.25P NPO 50V
C405		015-21120-01	CAP CER 0805 CHIP 1P2 +/-0.25 NPO 50V
C406		015-24100-08	CAP CER 0805 CHIP 1N 10% X7R 50V
&C407	3XXX	015-22680-01	CAP CER 0805 CHIP 68P 5% NPO 50V
&C407	4XXX	015-22390-01	CAP CER 0805 CHIP 39P 5% NPO 50V

Annotations:

- circuit reference - lists component in numerical order (points to the 'Ref' column)
- variant column - indicates that the component is only fitted to this particular model, type or option (points to the 'VAR' column)
- description - gives a brief description of the component (points to the 'Description' column)
- Internal Part Number - order the component by this number (points to the 'IPN' column)

The mechanical and miscellaneous section lists the variant and common parts in IPN order.

## Variant Parts

A variant component is one that has the same circuit reference but different value or specification in different product types, models or options. Variant components are indicated by a character prefix, such as '&', '#', or '='.

# Locating Components

## Grid Reference Indexes

To assist in locating components and labelled pads on the PCB layouts and circuit diagrams, a component grid reference index has been provided. This index lists the components and pads in alphabetical order, along with the appropriate alphanumeric grid references, as shown below.

The diagram shows a table with three columns: Device, PCB, and Circuit. Callouts point to various parts of the table and explain the meaning of the references.

Device	PCB	Circuit
A-2	1:E1	PA-B6
B-2	1:A2	PA-E6
B-3	1:A3	PA-F6
B-4	1:A3	PA-G6
B-5	1:B6	PA-J6
C-1	1:E2	PA-A6
C-2	4:B3	PA-H4
C101	1:E1	PA-B6

Callouts and their descriptions:

- components listed in numerical order (points to the Device column)
- PCB layout reference (points to the PCB column)
- circuit diagram reference (points to the Circuit column)
- component location on the sheet (points to the PCB reference '1:E1')
- sheet name or number e.g. PA = Power Amplifier (points to the Circuit reference 'PA-B6')
- component location on the layer (points to the PCB reference '1:E1')
- layer number: 1 = top side layer, 2 = bottom layer (2 layer PCB) (points to the PCB reference '1:E1')

## Using Circuit Diagrams

Reading a circuit diagram is similar to reading a road map, in that both have an alphanumeric border. The circuit diagrams in this manual use letters to represent the horizontal axis, and numbers for the vertical axis. These circuit diagram 'grid references' are useful in following a circuit that is spread over two or more sheets.

When a line representing part of the circuitry is discontinued, a reference will be given at the end of the line to indicate where the rest of the circuitry is located. The first digit refers to the sheet number (printed on the bottom right hand corner of the circuit diagram) and the last two characters refer to the location on that sheet of the continuation of the circuit (e.g. 1-D4).

If more than one line is represented (indicated by a double thickness line), a dot with a reference label will follow the route each individual line represents.

# 7.1 T2000-100 RF PCB

## T2000-100 Parts List (IPN 220-01331-02)

### Parts List Amendments

Ref	Var	IPN	Description	Ref	Var	IPN	Description
2*6WAY		240-00020-51	PLUG 12 WAY 2*6 FLAT CABLE TERMN	C190		015-23470-08	CAP CER 0805 CHIP 470P 10% X7R 50V
C1		015-23680-08	CAP CER 0805 CHIP 680P 10% X7R 50V	C191		015-24100-08	CAP CER 0805 CHIP 1N 10% X7R 50V
C2		015-23680-08	CAP CER 0805 CHIP 680P 10% X7R 50V	C192		015-22330-01	CAP CER 0805 CHIP 33P 5% NPO 50V
C3		015-23680-08	CAP CER 0805 CHIP 680P 10% X7R 50V	C193		020-57470-10	CAP ELECT AI RDL 4U7 50V LO ESR
C100		015-25100-08	CAP CER 0805 CHIP 10N 10% X7R 50V	C194		015-23680-08	CAP CER 0805 CHIP 680P 10% X7R 50V
C101		015-21820-01	CAP CER 0805 CHIP 8P2 +/-0.25P NPO 50V	C195		015-23680-08	CAP CER 0805 CHIP 680P 10% X7R 50V
C102		015-22680-01	CAP CER 0805 CHIP 68P 5% NPO 50V	C197		015-06100-08	CAP CER 1206 CHIP 100N 10% X7R 50V
C103		015-22120-01	CAP CER 0805 CHIP 12P 5% NPO 50V	C198		015-21100-01	CAP CER 0805 CHIP 1P0 +/-0.25P NPO 50V
C104		015-06100-08	CAP CER 1206 CHIP 100N 10% X7R 50V	C199		015-24100-08	CAP CER 0805 CHIP 1N 10% X7R 50V
C105		015-21120-01	CAP CER 0805 CHIP 1P2 +/-0.25 NPO 50V	C200		015-25100-08	CAP CER 0805 CHIP 10N 10% X7R 50V
C106		015-23680-08	CAP CER 0805 CHIP 680P 10% X7R 50V	C201		015-25100-08	CAP CER 0805 CHIP 10N 10% X7R 50V
C107		015-21560-01	CAP CER 0805 CHIP 5P6 +/-0.25P NPO 50V	C205		015-24100-08	CAP CER 0805 CHIP 1N 10% X7R 50V
C108		015-25100-08	CAP CER 0805 CHIP 10N 10% X7R 50V	C206		015-06100-08	CAP CER 1206 CHIP 100N 10% X7R 50V
C109		015-21220-01	CAP CER 0805 CHIP 2P2 +/-0.25P NPO 50V	C207		015-25100-08	CAP CER 0805 CHIP 10N 10% X7R 50V
C110		015-23680-08	CAP CER 0805 CHIP 680P 10% X7R 50V	C208		015-25100-08	CAP CER 0805 CHIP 10N 10% X7R 50V
C111		015-21820-01	CAP CER 0805 CHIP 8P2 +/-0.25P NPO 50V	C209		015-25100-08	CAP CER 0805 CHIP 10N 10% X7R 50V
C112		015-21180-01	CAP CER 0805 CHIP 1P8 +/-0.25 NPO 50V	C210		015-25100-08	CAP CER 0805 CHIP 10N 10% X7R 50V
C113		015-21220-01	CAP CER 0805 CHIP 2P2 +/-0.25P NPO 50V	C211		015-23150-01	CAP CER 0805 CHIP 150P 5% NPO 50V
C114		015-23680-08	CAP CER 0805 CHIP 680P 10% X7R 50V	C212		015-21390-01	CAP CER 0805 CHIP 3P9 +/-0.25P NPO 50V
C115		015-22120-01	CAP CER 0805 CHIP 12P 5% NPO 50V	C213		020-58470-05	CAP ELECT AI RDL 47M 16V 6.3X7MM
C116		015-24100-08	CAP CER 0805 CHIP 1N 10% X7R 50V	C214		015-23680-08	CAP CER 0805 CHIP 680P 10% X7R 50V
C117		015-21180-01	CAP CER 0805 CHIP 1P8 +/-0.25 NPO 50V	C215		020-57470-10	CAP ELECT AI RDL 4U7 50V LO ESR
C118		015-21220-01	CAP CER 0805 CHIP 2P2 +/-0.25P NPO 50V	C216		015-25100-08	CAP CER 0805 CHIP 10N 10% X7R 50V
C119		015-23680-08	CAP CER 0805 CHIP 680P 10% X7R 50V	C217		020-58470-05	CAP ELECT AI RDL 47M 16V 6.3X7MM
C120		015-23680-08	CAP CER 0805 CHIP 680P 10% X7R 50V	C218		020-57470-10	CAP ELECT AI RDL 4U7 50V LO ESR
C121		015-21820-01	CAP CER 0805 CHIP 8P2 +/-0.25P NPO 50V	C219		020-58470-05	CAP ELECT AI RDL 47M 16V 6.3X7MM
C122		015-21560-01	CAP CER 0805 CHIP 5P6 +/-0.25P NPO 50V	C220		022-55150-10	CAP MYLAR AI 15N 5% 63V POTTED
C123		015-23680-08	CAP CER 0805 CHIP 680P 10% X7R 50V	C221		022-57100-02	CAP MYLAR AI 1M 20% 50V POTTED
C124		015-21680-01	CAP CER 0805 CHIP 6P8 +/-0.25P NPO 50V	C222		022-06100-15	CAP MET POLYSTR 100N 5% 50V 5.6MM HI
C125		015-21560-01	CAP CER 0805 CHIP 5P6 +/-0.25P NPO 50V	C223		015-23680-08	CAP CER 0805 CHIP 680P 10% X7R 50V
C126		015-21820-01	CAP CER 0805 CHIP 8P2 +/-0.25P NPO 50V	C224		015-23680-08	CAP CER 0805 CHIP 680P 10% X7R 50V
C127		015-22220-01	CAP CER 0805 CHIP 22P 5% NPO 50V	C225		015-23680-08	CAP CER 0805 CHIP 680P 10% X7R 50V
C128		015-22330-01	CAP CER 0805 CHIP 33P 5% NPO 50V	C226		015-21100-01	CAP CER 0805 CHIP 1P0 +/-0.25P NPO 50V
C129		015-25100-08	CAP CER 0805 CHIP 10N 10% X7R 50V	C227		015-23680-08	CAP CER 0805 CHIP 680P 10% X7R 50V
C130		015-25100-08	CAP CER 0805 CHIP 10N 10% X7R 50V	C228		015-22270-01	CAP CER 0805 CHIP 27P 5% NPO 50V
C131		015-22330-01	CAP CER 0805 CHIP 33P 5% NPO 50V	C229		020-58470-05	CAP ELECT AI RDL 47M 16V 6.3X7MM
C133		015-23270-01	CAP CER 0805 CHIP 270P 5% NPO 50V	C230		015-24470-08	CAP CER 0805 CHIP 4N7 10% X7R 50V
C134		015-22100-01	CAP CER 0805 CHIP 10P +/-0.5P NPO 50V	C231		015-23680-08	CAP CER 0805 CHIP 680P 10% X7R 50V
C135		015-23150-01	CAP CER 0805 CHIP 150P 5% NPO 50V	C232		015-22100-01	CAP CER 0805 CHIP 10P +/-0.5P NPO 50V
C136		015-22270-01	CAP CER 0805 CHIP 27P 5% NPO 50V	C233		020-57470-10	CAP ELECT AI RDL 4U7 50V LO ESR
C137		015-23680-08	CAP CER 0805 CHIP 680P 10% X7R 50V	C234		020-57470-10	CAP ELECT AI RDL 4U7 50V LO ESR
C138		015-22270-01	CAP CER 0805 CHIP 27P 5% NPO 50V	C235		015-25100-08	CAP CER 0805 CHIP 10N 10% X7R 50V
C140		015-22100-01	CAP CER 0805 CHIP 10P +/-0.5P NPO 50V	C236		015-21270-01	CAP CER 0805 CHIP 2P7 +/-0.25P NPO 50V
C141		015-23270-01	CAP CER 0805 CHIP 270P 5% NPO 50V	C237		015-24100-08	CAP CER 0805 CHIP 1N 10% X7R 50V
C145		015-23100-01	CAP CER 0805 CHIP 100P 5% NPO 50V	C238		015-25100-08	CAP CER 0805 CHIP 10N 10% X7R 50V
C147		015-25100-08	CAP CER 0805 CHIP 10N 10% X7R 50V	C239		015-23680-08	CAP CER 0805 CHIP 680P 10% X7R 50V
C148		015-22180-01	CAP CER 0805 CHIP 18P 5% NPO 50V	C240		015-23680-08	CAP CER 0805 CHIP 680P 10% X7R 50V
C149		015-24100-08	CAP CER 0805 CHIP 1N 10% X7R 50V	C241		015-23680-08	CAP CER 0805 CHIP 680P 10% X7R 50V
C150		015-23100-01	CAP CER 0805 CHIP 100P 5% NPO 50V	C242		015-23680-08	CAP CER 0805 CHIP 680P 10% X7R 50V
C151		015-06100-08	CAP CER 1206 CHIP 100N 10% X7R 50V	C243		015-23680-08	CAP CER 0805 CHIP 680P 10% X7R 50V
C152		015-23100-01	CAP CER 0805 CHIP 100P 5% NPO 50V	C244		015-21680-01	CAP CER 0805 CHIP 6P8 +/-0.25P NPO 50V
C152A		015-25100-08	CAP CER 0805 CHIP 10N 10% X7R 50V	C245		015-21560-01	CAP CER 0805 CHIP 5P6 +/-0.25P NPO 50V
C153		020-57470-10	CAP ELECT AI RDL 4U7 50V LO ESR	C246		015-23680-08	CAP CER 0805 CHIP 680P 10% X7R 50V
C153A		015-23100-01	CAP CER 0805 CHIP 100P 5% NPO 50V	C247		015-21470-01	CAP CER 0805 CHIP 4P7 +/-0.25P NPO 50V
C154		015-25100-08	CAP CER 0805 CHIP 10N 10% X7R 50V	C248		015-25100-08	CAP CER 0805 CHIP 10N 10% X7R 50V
C155		015-23100-01	CAP CER 0805 CHIP 100P 5% NPO 50V	C249		020-58470-05	CAP ELECT AI RDL 47M 16V 6.3X7MM
C156		015-22220-01	CAP CER 0805 CHIP 22P 5% NPO 50V	C250		015-23680-08	CAP CER 0805 CHIP 680P 10% X7R 50V
C157		015-06100-08	CAP CER 1206 CHIP 100N 10% X7R 50V	C251		015-23680-08	CAP CER 0805 CHIP 680P 10% X7R 50V
C158		015-24100-08	CAP CER 0805 CHIP 1N 10% X7R 50V	C252		015-23680-08	CAP CER 0805 CHIP 680P 10% X7R 50V
C159		015-23270-01	CAP CER 0805 CHIP 270P 5% NPO 50V	C288		015-23330-08	CAP CER 0805 CHIP 330P 10% X7R 50V
C160		015-23100-01	CAP CER 0805 CHIP 100P 5% NPO 50V	C300		020-07470-04	CAP ELECT RADL 4M7 25V 20% 8X13MM SOLID
C174		020-58470-05	CAP ELECT AI RDL 47M 16V 6.3X7MM	C301		015-22470-01	CAP CER 0805 CHIP 47P 5% NPO 50V
C175		015-06100-08	CAP CER 1206 CHIP 100N 10% X7R 50V	C302		015-22120-01	CAP CER 0805 CHIP 12P 5% NPO 50V
C176		015-06100-08	CAP CER 1206 CHIP 100N 10% X7R 50V	C303		015-06100-08	CAP CER 1206 CHIP 100N 10% X7R 50V
C179		015-25100-08	CAP CER 0805 CHIP 10N 10% X7R 50V	C304		015-23330-08	CAP CER 0805 CHIP 330P 10% X7R 50V
C180		015-06100-08	CAP CER 1206 CHIP 100N 10% X7R 50V	C305		015-22330-01	CAP CER 0805 CHIP 33P 5% NPO 50V
C181		015-06100-08	CAP CER 1206 CHIP 100N 10% X7R 50V	C306		015-22270-01	CAP CER 0805 CHIP 27P 5% NPO 50V
C185		015-25100-08	CAP CER 0805 CHIP 10N 10% X7R 50V	C307		015-06100-08	CAP CER 1206 CHIP 100N 10% X7R 50V
C186		015-25100-08	CAP CER 0805 CHIP 10N 10% X7R 50V	C309		015-23330-08	CAP CER 0805 CHIP 330P 10% X7R 50V
C187		015-24100-08	CAP CER 0805 CHIP 1N 10% X7R 50V	C310		015-24100-08	CAP CER 0805 CHIP 1N 10% X7R 50V
C188		015-23100-01	CAP CER 0805 CHIP 100P 5% NPO 50V	C311		015-24100-08	CAP CER 0805 CHIP 1N 10% X7R 50V
C189		015-23470-08	CAP CER 0805 CHIP 470P 10% X7R 50V	C312		015-22560-01	CAP CER 0805 CHIP 56P 5% NPO 50V
				C313		015-23100-01	CAP CER 0805 CHIP 100P 5% NPO 50V

Ref	Var	IPN	Description	Ref	Var	IPN	Description
C314		015-23100-01	CAP CER 0805 CHIP 100P 5% NPO 50V	IC404		002-00078-05	(S) IC MC7805ACT 5V REG(LINEAR)1AMP TO-
C315		015-23680-08	CAP CER 0805 CHIP 680P 10% X7R 50V	L101		052-08145-15	COIL A/W 1.5T/4.5MM HOR 0.8MM WIRE
C316		015-23680-08	CAP CER 0805 CHIP 680P 10% X7R 50V	L104		050-00016-77	COIL NE545BNAS-100085 48NH 5 1/2T WITH B
C317		015-23680-08	CAP CER 0805 CHIP 680P 10% X7R 50V	L105		050-00016-77	COIL NE545BNAS-100085 48NH 5 1/2T WITH B
C318		015-23680-08	CAP CER 0805 CHIP 680P 10% X7R 50V	L106		050-00016-77	COIL NE545BNAS-100085 48NH 5 1/2T WITH B
C319		015-23680-08	CAP CER 0805 CHIP 680P 10% X7R 50V	L107		050-00016-65	COIL BALUN 7.2MM2 5X0.5PINS 5T/4 456DB-1
C320		015-02560-03	CAP CER CHIP 56P 5% 500V HIQ GRH111 2.8M	L108		050-00016-65	COIL BALUN 7.2MM2 5X0.5PINS 5T/4 456DB-1
C321		015-06100-08	CAP CER 1206 CHIP 100N 10% X7R 50V	L109		052-08135-25	COIL A/W 2.5T/3.5MM HOR 0.8MM WIRE
C322		015-02220-03	CAP CER CHIP 22P 5% NPO 500V HIQ GRH111	L110		056-00021-61	IND FXD 1.0UH 10% PHENOLIC 10MM L/S
C323		015-03680-06	CAP CER 1210 CHIP 680P NPO 200V GRM42	L114		050-00016-62	COIL IF 1UH AT 30MHZ 6MMSQX6.2MMH CAN 29
C324		015-03100-06	CAP CER 1210 CHIP 100P NPO 500V GRM42-2	L116		050-00016-62	COIL IF 1UH AT 30MHZ 6MMSQX6.2MMH CAN 29
C325		015-03100-06	CAP CER 1210 CHIP 100P NPO 500V GRM42-2	L117		050-00016-65	COIL BALUN 7.2MM2 5X0.5PINS 5T/4 456DB-1
C326		015-24100-08	CAP CER 0805 CHIP 1N 10% X7R 50V	L118		050-00016-65	COIL BALUN 7.2MM2 5X0.5PINS 5T/4 456DB-1
C327		015-06100-08	CAP CER 1206 CHIP 100N 10% X7R 50V	L119		050-00016-55	COIL TAIT NO 655 455KHZ QUAD COIL 7MM CA
C328		015-02680-06	CAP CER 1210 CHIP 68P NPO 500V GRM42-2	L120		057-10005-03	IND 0805 BLM21B05 EMI SUPRSN 5 OHM AT 10
C329		015-02150-06	CAP CER 1210 CHIP 15P NPO 500V GRM42-2	L121		057-10120-03	IND 0805 BLM21A121 EMI SUPRSN 120 OHM @
C330		015-02560-06	CAP CER 1210 CHIP 56P NPO 500V GRM42-2	L200		057-10005-03	IND 0805 BLM21B05 EMI SUPRSN 5 OHM AT 10
C331		015-02680-06	CAP CER 1210 CHIP 68P NPO 500V GRM42-2	L202		056-10100-00	IND FXD SMD 100NH 3.2*2.5*1.6 SIEMENS SM
C332		015-02180-06	CAP CER 1210 CHIP 18P NPO 500V GRM42-2	L203		050-00016-62	COIL IF 1UH AT 30MHZ 6MMSQX6.2MMH CAN 29
C333		015-02680-06	CAP CER 1210 CHIP 68P NPO 500V GRM42-2	L204		056-10820-00	IND FXD SMD 820NH 3.2*2.5*1.6 SIEMENS SM
C334		015-02680-06	CAP CER 1210 CHIP 68P NPO 500V GRM42-2	L205		056-10820-00	IND FXD SMD 820NH 3.2*2.5*1.6 SIEMENS SM
C334A		015-02680-06	CAP CER 1210 CHIP 68P NPO 500V GRM42-2	L206		055-01008-01	COIL TOROID 57NH 15P 11T T2300
C335		015-01220-06	CAP CER 1210 CHIP 2P2 NPO 500V GRM42-2	L207		056-10820-00	IND FXD SMD 820NH 3.2*2.5*1.6 SIEMENS SM
C336		015-03680-06	CAP CER 1210 CHIP 680P NPO 200V GRM42	L208		057-00047-00	IND FXD SMD 47NH 20% MUR LQN2A
C337		015-23680-08	CAP CER 0805 CHIP 680P 10% X7R 50V	L210		057-00047-00	IND FXD SMD 47NH 20% MUR LQN2A
C338		015-23100-01	CAP CER 0805 CHIP 100P 5% NPO 50V	L301		052-08125-25	COIL A/W 2.5T/2.5MM HOR 0.8MM WIRE
C339		015-02100-06	CAP CER 1210 CHIP 10P 5% NPO 500V GRM42	L303		056-00021-60	IND FXD 330NH 6.6X2.7MM AXIAL NON MAGNET
C340		015-02120-06	CAP CER 1210 CHIP 12P NPO 500V GRM42-2	L304		052-08125-25	COIL A/W 2.5T/2.5MM HOR 0.8MM WIRE
C341		015-02120-06	CAP CER 1210 CHIP 12P NPO 500V GRM42-2	L305		052-08125-45	COIL A/W 4.5T/2.5MM HOR 0.8MM WIRE
C342		015-03680-03	CAP CER CHIP 680P 5% NPO 100V HIQ GRH111	L306		057-10005-03	IND 0805 BLM21B05 EMI SUPRSN 5 OHM AT 10
C343		015-01220-06	CAP CER 1210 CHIP 2P2 NPO 500V GRM42-2	L307		052-08120-15	COIL A/W 1.5T/2MM HOR 0.8MM WIRE
C344		015-01470-06	CAP CER 1210 CHIP 4P7 NPO 500V GRM42-2	L310		052-08120-15	COIL A/W 1.5T/2MM HOR 0.8MM WIRE
C345		015-23680-08	CAP CER 0805 CHIP 680P 10% X7R 50V	L311		052-08135-85	COIL A/W 8.5T/3.0MM HOR 0.8MM WIRE
C346		015-21560-01	CAP CER 0805 CHIP 5P6 +/-0.25P NPO 50V	L312		056-00021-60	IND FXD 330NH 6.6X2.7MM AXIAL NON MAGNET
C347		015-21560-01	CAP CER 0805 CHIP 5P6 +/-0.25P NPO 50V	L315		065-00010-01	BEAD FERRITE 3B 6 HOLE
C348		015-24100-08	CAP CER 0805 CHIP 1N 10% X7R 50V	L316		052-08127-15	COIL A/W 1.5T/2.7MM HOR 0.8MM WIRE
C349		015-24100-08	CAP CER 0805 CHIP 1N 10% X7R 50V	L318		052-56130-85	COIL A/W 8.5T/3.0MM HOR 0.56MM WIRE
C350		015-03150-06	CAP CER 1210 CHIP 150P NPO 500V GRM42-2	L319		056-00021-01	IND FXD 1.5UH AXIAL
C351		015-01390-06	CAP CER 1210 CHIP 3P9 NPO 500V GRM42-2	L320		052-08160-25	COIL A/W 2.5T/6.0MM HOR 0.8MM WIRE
C352		015-03150-06	CAP CER 1210 CHIP 150P NPO 500V GRM42-2	L321		056-00021-60	IND FXD 330NH 6.6X2.7MM AXIAL NON MAGNET
C353		015-24100-08	CAP CER 0805 CHIP 1N 10% X7R 50V	L322		052-08150-25	COIL A/W 2.5T/5.0MM HOR 0.8MM WIRE
C355		015-06100-08	CAP CER 1206 CHIP 100N 10% X7R 50V	L323		052-08150-25	COIL A/W 2.5T/5.0MM HOR 0.8MM WIRE
C356		015-06100-08	CAP CER 1206 CHIP 100N 10% X7R 50V	L324		052-08130-45	COIL A/W 4.5T/3.0MM HOR 0.8MM WIRE
C357		015-24100-08	CAP CER 0805 CHIP 1N 10% X7R 50V	L325		052-08150-25	COIL A/W 2.5T/5.0MM HOR 0.8MM WIRE
C359		020-58100-04	CAP ELECT AI RDL 10M 16V 4X7MM	L330		030-50000-00	LINK WIRE AI ZERO OHM 0.6MM WIRE
C360		015-24100-08	CAP CER 0805 CHIP 1N 10% X7R 50V	L331		057-10005-03	IND 0805 BLM21B05 EMI SUPRSN 5 OHM AT 10
C370		015-02150-03	CAP CER CHIP 15P 5% 500V HIQ GRH111 2.8M	L401		050-00016-50	COIL TAIT NO 650 455KHZ 5.6MM CAN
C371		015-02150-03	CAP CER CHIP 15P 5% 500V HIQ GRH111 2.8M	P1		240-00026-24	CONN PADLE BRD 16 WAY MICRO MATCH 1-2155
C403		015-23470-08	CAP CER 0805 CHIP 470P 10% X7R 50V	P2		240-00026-26	CONN PADLE BRD 12 WAY MICRO MATCH 1-2155
C410		020-57470-10	CAP ELECT AI RDL 4U7 50V LO ESR	P3		240-00026-21	PLUG CAP HOUSING 7-POS CONN 172039-1
C411		015-06100-08	CAP CER 1206 CHIP 100N 10% X7R 50V	P5		240-00010-76	PLUG HEADER 10WAY MICROMATCH PCB MTD 1-
C412		020-58470-05	CAP ELECT AI RDL 47M 16V 6.3X7MM	P6		240-00010-76	PLUG HEADER 10WAY MICROMATCH PCB MTD 1-
C413		015-06100-08	CAP CER 1206 CHIP 100N 10% X7R 50V	P7		240-00020-72	HEADER 2 WAY PCB MTG ULTREX
C414		020-09470-05	CAP ELECT RADL 470M 16V 10X12.5MM	Q100		000-10003-12	(S) XSTR SMD BFR31 N JFET SOT-23
C415		020-19100-02	CAP ELECT RADL 1000M 16V 12X20MM	Q101		000-10095-10	(S) XSTR SMD MMBR951 NPN UHF SOT-23
C416		015-23470-08	CAP CER 0805 CHIP 470P 10% X7R 50V	Q102		000-10008-57	(S) XSTR SMD BCW70 PNP SOT23 AF SML SIG
C419		015-06100-08	CAP CER 1206 CHIP 100N 10% X7R 50V	Q103		000-10095-10	(S) XSTR SMD MMBR951 NPN UHF SOT-23
C420		015-06100-08	CAP CER 1206 CHIP 100N 10% X7R 50V	Q105		000-10008-92	(S) XSTR SMD BFS17 NPN SOT-23 UHF SMALL
C423		020-08560-09	CAP ELECT RADL 56M 50V 6.3X15.5MM L/S	Q106		000-10008-48	(S) XSTR SMD BCW60/BC848B215 NPN SOT23 A
C424		020-57470-10	CAP ELECT AI RDL 4U7 50V LO ESR	Q107		000-10008-92	(S) XSTR SMD BFS17 NPN SOT-23 UHF SMALL
C425		020-57470-10	CAP ELECT AI RDL 4U7 50V LO ESR	Q108		000-10008-92	(S) XSTR SMD BFS17 NPN SOT-23 UHF SMALL
C426		015-25100-08	CAP CER 0805 CHIP 10N 10% X7R 50V	Q109		000-10008-57	(S) XSTR SMD BCW70 PNP SOT23 AF SML SIG
C427		020-57470-10	CAP ELECT AI RDL 4U7 50V LO ESR	Q110		000-10008-92	(S) XSTR SMD BFS17 NPN SOT-23 UHF SMALL
C428		020-57470-10	CAP ELECT AI RDL 4U7 50V LO ESR	Q115		000-10008-48	(S) XSTR SMD BCW60/BC848B215 NPN SOT23 A
C429		015-24100-08	CAP CER 0805 CHIP 1N 10% X7R 50V	Q200		000-10008-48	(S) XSTR SMD BCW60/BC848B215 NPN SOT23 A
C430		020-08560-09	CAP ELECT RADL 56M 50V 6.3X15.5MM L/S	Q201		000-10008-57	(S) XSTR SMD BCW70 PNP SOT23 AF SML SIG
D1		001-00012-90	(S) DIODE MR2520L OVERVOLT SUPPRESSOR	Q202		000-10008-48	(S) XSTR SMD BCW60/BC848B215 NPN SOT23 A
D101		001-10006-39	(S) DIODE SMD VARICAP BB639 SOD323	Q203		000-10008-48	(S) XSTR SMD BCW60/BC848B215 NPN SOT23 A
D102		001-10006-39	(S) DIODE SMD VARICAP BB639 SOD323	Q204		000-10008-48	(S) XSTR SMD BCW60/BC848B215 NPN SOT23 A
D103		001-10006-39	(S) DIODE SMD VARICAP BB639 SOD323	Q205		000-10008-48	(S) XSTR SMD BCW70 PNP SOT23 AF SML SIG
D105		001-10000-18	(S) DIODE SMD BAT18 BANDSWITCH SOT-23 SI	Q206		000-10008-48	(S) XSTR SMD BCW60/BC848B215 NPN SOT23 A
D106		001-10000-18	(S) DIODE SMD BAT18 BANDSWITCH SOT-23 SI	Q207		000-10008-57	(S) XSTR SMD BCW70 PNP SOT23 AF SML SIG
D107		001-10000-17	(S) DIODE SMD DUAL BAT-17 SCHOTTKY SML S	Q208		000-10008-48	(S) XSTR SMD BCW60/BC848B215 NPN SOT23 A
D108		001-10000-17	(S) DIODE SMD DUAL BAT-17 SCHOTTKY SML S	Q209		000-10008-57	(S) XSTR SMD BCW70 PNP SOT23 AF SML SIG
D110		001-10000-17	(S) DIODE SMD DUAL BAT-17 SCHOTTKY SML S	Q210		000-10003-12	(S) XSTR SMD BFR31 N JFET SOT-23
D111		001-10000-17	(S) DIODE SMD DUAL BAT-17 SCHOTTKY SML S	Q211		000-10008-07	(S) XSTR SMD BC807 PNP SOT-23 AF LO PWR
D140A		001-10000-18	(S) DIODE SMD BAT18 BANDSWITCH SOT-23 S	Q212		000-10057-10	(S) XSTR SMD MMBR571 NPN SOT-23 UHF LO P
D200		001-10000-99	(S) DIODE SMD BAV99 DUAL SWITCH SINGLE INL	Q213		000-10008-48	(S) XSTR SMD BCW60/BC848B215 NPN SOT23 A
D202		001-10000-70	(S) DIODE SMD BAV70 DUAL SWITCH SOT-23 C	Q214		000-10095-10	(S) XSTR SMD MMBR951 NPN UHF SOT-23
D203		001-10006-39	(S) DIODE SMD VARICAP BB639 SOD323	Q215		000-10095-10	(S) XSTR SMD MMBR951 NPN UHF SOT-23
D204		001-10006-39	(S) DIODE SMD VARICAP BB639 SOD323	Q216		000-10095-10	(S) XSTR SMD MMBR951 NPN UHF SOT-23
D205		001-10006-39	(S) DIODE SMD VARICAP BB639 SOD323	Q300		000-00032-47	(S) XSTR MRF559 NPN XPACK UHF PWR 0.5W
D206		001-10006-39	(S) DIODE SMD VARICAP BB639 SOD323	Q301		000-10095-10	(S) XSTR SMD MMBR951 NPN UHF SOT-23
D208		001-10000-18	(S) DIODE SMD BAT18 BANDSWITCH SOT-23 SI	Q302		000-00032-46	XSTR MRF553 NPN VHF XPACK
D209		001-10000-18	(S) DIODE SMD BAT18 BANDSWITCH SOT-23 SI	Q303		000-10008-48	(S) XSTR SMD BCW60/BC848B215 NPN SOT23 A
D301		001-00013-45	(S) DIODE SCHOTTKY 1SS97/2	Q304		000-00012-15	(S) XSTR BD234 PNP AF PWR TO126
D302		001-50012-05	(S) DIODE AI 1N4531 SI SMALL SIG	Q305		000-00008-10	(SH) XSTR BLW81 NPN UHF PWR 10W STUD
D303		001-00012-50	(S) DIODE PIN UM9401 UHF PWR SWITCH	Q306		000-00032-90	(S) XSTR MRF1946A VHF PWR 30W STUD MTG
D304		001-00012-50	(S) DIODE PIN UM9401 UHF PWR SWITCH	Q307		000-10008-48	(S) XSTR SMD BCW60/BC848B215 NPN SOT23 A
D401		001-10000-70	(S) DIODE SMD BAV70 DUAL SWITCH SOT-23 C	Q308		000-10008-07	(S) XSTR SMD BC807 PNP SOT-23 AF LO PWR
IC101		002-10033-71	(S) IC SMD MC3371D-R2 FM IF DETECT RSSI	Q309		000-10008-07	(S) XSTR SMD BC807 PNP SOT-23 AF LO PWR
IC201		002-10451-58	(S) IC SMD MC145158DW2 FREQ SYNTH SOIC	Q402		000-10008-57	(S) XSTR SMD BCW70 PNP SOT-23 AF SML SIG
IC202		002-10330-78	(S) IC MC33078D-R2 DUAL AMP LO NOISE SO	Q402		000-10008-17	(S) XSTR SMD BC817-25 NPN SOT-23 AF LO P
IC203		002-01120-22	(S) IC SMD MC12022AD-R2 PRESC 8-P	R100		036-13180-00	RES M/F 0805 CHIP 180E 5%
IC402		002-00013-70	(S) IC TDA1020 AF PWR AMP 9PIN SIL				
IC403		002-00078-08	(S) IC MC7808ACT 8V REG(LINEAR)1AMP TO-				

Ref	Var	IPN	Description	Ref	Var	IPN	Description
R101		036-14390-00	RES M/F 0805 CHIP 3K9 5%	R249		036-13120-00	RES M/F 0805 CHIP 120E 5%
R102		036-13560-00	RES M/F 0805 CHIP 560E 5%	R250		036-14220-00	RES M/F 0805 CHIP 2K2 5%
R103		036-14220-00	RES M/F 0805 CHIP 2K2 5%	R251		036-13150-00	RES M/F 0805 CHIP 150E 5%
R104		036-13120-00	RES M/F 0805 CHIP 120E 5%	R252		036-13560-00	RES M/F 0805 CHIP 560E 5%
R105		036-12180-00	RES M/F 0805 CHIP 18E 5%	R254		036-12220-00	RES M/F 0805 CHIP 22E 5%
R106		036-16100-00	RES M/F 0805 CHIP 100K 5%	R255		036-12100-00	RES M/F 0805 CHIP 10E 5%
R107		036-16100-00	RES M/F 0805 CHIP 100K 5%	R256		036-14150-00	RES M/F 0805 CHIP 1K5 5%
R108		036-16100-00	RES M/F 0805 CHIP 100K 5%	R257		036-14120-00	RES M/F 0805 CHIP 1K2 5%
R109		036-10000-00	RES M/F 0805 CHIP ZERO OHM	R258		036-12100-00	RES M/F 0805 CHIP 10E 5%
R110		036-10000-00	RES M/F 0805 CHIP ZERO OHM	R259		036-13560-00	RES M/F 0805 CHIP 560E 5%
R111		036-16150-00	RES M/F 0805 CHIP 150K 5%	R260		036-12270-00	RES M/F 0805 CHIP 27E 5%
R112		036-12470-00	RES M/F 0805 CHIP 47E 5%	R261		036-12100-00	RES M/F 0805 CHIP 10E 5%
R113		036-11470-00	RES M/F 0805 CHIP 4E7 10%	R262		036-14220-00	RES M/F 0805 CHIP 2K2 5%
R114		036-13820-00	RES M/F 0805 CHIP 820E 5%	R263		036-12220-00	RES M/F 0805 CHIP 22E 5%
R115		036-15120-00	RES M/F 0805 CHIP 12K 5%	R264		036-14330-00	RES M/F 0805 CHIP 3K3 5%
R116		036-11470-00	RES M/F 0805 CHIP 4E7 10%	R265		036-14390-00	RES M/F 0805 CHIP 3K9 5%
R117		036-12100-00	RES M/F 0805 CHIP 10E 5%	R269		036-12100-00	RES M/F 0805 CHIP 10E 5%
R118		036-13100-00	RES M/F 0805 CHIP 100E 5%	R270		036-12330-00	RES M/F 0805 CHIP 33E 5%
R119		036-12100-00	RES M/F 0805 CHIP 10E 5%	R271		036-12220-00	RES M/F 0805 CHIP 22E 5%
R120		036-13820-00	RES M/F 0805 CHIP 820E 5%	R272		036-13150-00	RES M/F 0805 CHIP 150E 5%
R121		036-13180-00	RES M/F 0805 CHIP 180E 5%	R273		036-12100-00	RES M/F 0805 CHIP 10E 5%
R131		036-13100-00	RES M/F 0805 CHIP 100E 5%	R274		036-14390-00	RES M/F 0805 CHIP 3K9 5%
R132		036-14220-00	RES M/F 0805 CHIP 2K2 5%	R275		036-12330-00	RES M/F 0805 CHIP 33E 5%
R133		036-13270-00	RES M/F 0805 CHIP 270E 5%	R276		036-13220-00	RES M/F 0805 CHIP 220E 5%
R135		036-15100-00	RES M/F 0805 CHIP 10K 5%	R277		036-14120-00	RES M/F 0805 CHIP 1K2 5%
R138		036-16100-00	RES M/F 0805 CHIP 100K 5%	R278		036-16100-00	RES M/F 0805 CHIP 100K 5%
R140		036-15680-00	RES M/F 0805 CHIP 68K 5%	R279		030-53100-20	RES FILM AI 100E 5% 0.4W 4X1.6MM
R140A		036-15330-00	RES M/F 0805 CHIP 33K 5%	R280		036-12220-00	RES M/F 0805 CHIP 22E 5%
R141		036-14150-00	RES M/F 0805 CHIP 1K5 5%	R281		036-12330-00	RES M/F 0805 CHIP 33E 5%
R142		036-15270-00	RES M/F 0805 CHIP 27K 5%	R282		036-13120-00	RES M/F 0805 CHIP 120E 5%
R142A		036-16100-00	RES M/F 0805 CHIP 100K 5%	R283		036-12220-00	RES M/F 0805 CHIP 22E 5%
R143		036-15330-00	RES M/F 0805 CHIP 33K 5%	R284		036-15100-00	RES M/F 0805 CHIP 10K 5%
R143A		036-15330-00	RES M/F 0805 CHIP 33K 5%	R285		036-15560-00	RES M/F 0805 CHIP 56K 5%
#R144		036-15680-00	RES M/F 0805 CHIP 68K 5%	R286		036-16220-00	RES M/F 0805 CHIP 220K 5%
R144A		036-16120-00	RES M/F 0805 CHIP 120K 5%	R287		036-15560-00	RES M/F 0805 CHIP 56K 5%
R145		036-14150-00	RES M/F 0805 CHIP 1K5 5%	R288		036-15390-00	RES M/F 0805 CHIP 39K 5%
R145A		036-15330-00	RES M/F 0805 CHIP 33K 5%	R300		036-14100-00	RES M/F 0805 CHIP 1K 5%
R146		036-12220-00	RES M/F 0805 CHIP 22E 5%	R301		036-13220-00	RES M/F 0805 CHIP 220E 5%
R147		036-13220-00	RES M/F 0805 CHIP 220E 5%	R302		036-14100-00	RES M/F 0805 CHIP 1K 5%
R148		036-14100-00	RES M/F 0805 CHIP 1K 5%	R303		036-13330-00	RES M/F 0805 CHIP 330E 5%
R149		036-16100-00	RES M/F 0805 CHIP 100K 5%	R304		036-12680-00	RES M/F 0805 CHIP 68E 5%
R150		036-16100-00	RES M/F 0805 CHIP 100K 5%	R305		036-12100-00	RES M/F 0805 CHIP 10E 5%
R151		036-14330-00	RES M/F 0805 CHIP 3K3 5%	R306		036-12100-00	RES M/F 0805 CHIP 10E 5%
R152		036-16390-00	RES M/F 0805 CHIP 390K 5%	R307		030-54120-20	RES FILM AI 1K2 5% 0.4W 4X1.6MM
R153		036-14100-00	RES M/F 0805 CHIP 1K 5%	R308		036-14100-00	RES M/F 0805 CHIP 1K 5%
RV153		042-05470-07	RES PRESET 47K CARBON 6MM FLAT DUAL ADJ	R309		030-52560-20	RES FILM AI 56E 5% 0.4W 4X1.6MM
R154		036-15100-00	RES M/F 0805 CHIP 10K 5%	R310		036-13100-00	RES M/F 0805 CHIP 100E 5%
R155		036-16100-00	RES M/F 0805 CHIP 100K 5%	R311		036-13390-00	RES M/F 0805 CHIP 390E 5%
R156		036-13100-00	RES M/F 0805 CHIP 100E 5%	R312		036-13330-00	RES M/F 0805 CHIP 330E 5%
R157		036-15100-00	RES M/F 0805 CHIP 10K 5%	R313		036-13100-00	RES M/F 0805 CHIP 100E 5%
R158		036-14100-00	RES M/F 0805 CHIP 1K 5%	R314		036-12100-00	RES M/F 0805 CHIP 10E 5%
R159		036-12470-00	RES M/F 0805 CHIP 47E 5%	R315		030-52100-20	RES FILM AI 10E 5% 0.4W 4X1.6MM
R160		036-12100-00	RES M/F 0805 CHIP 10E 5%	R316		032-32120-02	RES M/F PWR 12E 5% 1W 8X2.5MM 12MML/S PR
R161		036-14100-00	RES M/F 0805 CHIP 1K 5%	R317		036-12100-00	RES M/F 0805 CHIP 10E 5%
R194		036-10000-00	RES M/F 0805 CHIP ZERO OHM	R318		030-52100-20	RES FILM AI 10E 5% 0.4W 4X1.6MM
R195		036-15680-00	RES M/F 0805 CHIP 68K 5%	R318A		030-52100-20	RES FILM AI 10E 5% 0.4W 4X1.6MM
R196		036-13100-00	RES M/F 0805 CHIP 100E 5%	R319		030-03100-00	RES FILM 100E 5% 0.25W 7X2.5MM
R197		036-13100-00	RES M/F 0805 CHIP 100E 5%	R320		030-55150-20	RES FILM AI 15K 5% 0.4W 4X1.6MM
R198		036-14220-00	RES M/F 0805 CHIP 2K2 5%	R321		030-52220-20	RES FILM AI 22E 5% 0.4W 4X1.6MM
R199		036-13100-00	RES M/F 0805 CHIP 100E 5%	R323		036-13330-00	RES M/F 0805 CHIP 330E 5%
R200		036-16180-00	RES M/F 0805 CHIP 180K 5%	R324		030-52470-20	RES FILM AI 47E 5% 0.4W 4X1.6MM
R201		036-14180-00	RES M/F 0805 CHIP 1K8 5%	RV324		042-06470-06	RES PRESET 470/500K 25% 6MM ROUND TOP A
R202		036-14220-00	RES M/F 0805 CHIP 2K2 5%	R326		036-16220-00	RES M/F 0805 CHIP 220K 5%
R213		036-14120-00	RES M/F 0805 CHIP 1K2 5%	R327		036-14100-00	RES M/F 0805 CHIP 1K 5%
R214		036-13680-00	RES M/F 0805 CHIP 680E 5%	R328		030-53150-20	RES FILM AI 150E 5% 0.4W 4X1.6MM
R217		036-12470-00	RES M/F 0805 CHIP 47E 5%	R329		036-15470-00	RES M/F 0805 CHIP 47K 5%
R218		036-15120-00	RES M/F 0805 CHIP 12K 5%	R330		036-16220-00	RES M/F 0805 CHIP 220K 5%
R219		036-13270-00	RES M/F 0805 CHIP 270E 5%	R332		036-13100-00	RES M/F 0805 CHIP 100E 5%
R220		036-14680-00	RES M/F 0805 CHIP 6K8 5%	R333		036-14220-00	RES M/F 0805 CHIP 2K2 5%
R221		036-13330-00	RES M/F 0805 CHIP 330E 5%	R334		036-16270-00	RES M/F 0805 CHIP 270K 5%
R222		036-12470-00	RES M/F 0805 CHIP 47E 5%	R335		036-14180-00	RES M/F 0805 CHIP 1K8 5%
RV222		042-05470-07	RES PRESET 47K CARBON 6MM FLAT DUAL ADJ	R336		036-13220-00	RES M/F 0805 CHIP 220E 5%
R223		036-15220-00	RES M/F 0805 CHIP 22K 5%	R337		036-10000-00	RES M/F 0805 CHIP ZERO OHM
R224		036-14820-00	RES M/F 0805 CHIP 8K2 5%	R338		036-15100-00	RES M/F 0805 CHIP 10K 5%
R225		036-15220-00	RES M/F 0805 CHIP 22K 5%	R339		036-15560-00	RES M/F 0805 CHIP 56K 5%
R226		036-14470-00	RES M/F 0805 CHIP 4K7 5%	R340		036-16220-00	RES M/F 0805 CHIP 220K 5%
R227		036-14120-00	RES M/F 0805 CHIP 1K2 5%	R341		036-13330-00	RES M/F 0805 CHIP 330E 5%
R228		036-14330-00	RES M/F 0805 CHIP 3K3 5%	R342		036-13680-00	RES M/F 0805 CHIP 680E 5%
R229		036-12220-00	RES M/F 0805 CHIP 22E 5%	R350		036-12100-00	RES M/F 0805 CHIP 10E 5%
R230		036-13390-00	RES M/F 0805 CHIP 390E 5%	R418		036-13680-00	RES M/F 0805 CHIP 680E 5%
R231		036-13180-00	RES M/F 0805 CHIP 180E 5%	R420		036-15470-00	RES M/F 0805 CHIP 47K 5%
R232		036-14220-00	RES M/F 0805 CHIP 2K2 5%	R420A		036-14470-00	RES M/F 0805 CHIP 4K7 5%
R233		036-13680-00	RES M/F 0805 CHIP 680E 5%	R421		036-15470-00	RES M/F 0805 CHIP 47K 5%
R234		036-13180-00	RES M/F 0805 CHIP 180E 5%	R421A		036-14470-00	RES M/F 0805 CHIP 4K7 5%
R235		036-13330-00	RES M/F 0805 CHIP 330E 5%	R422		036-12220-00	RES M/F 0805 CHIP 22E 5%
R236		036-12470-00	RES M/F 0805 CHIP 47E 5%	R425		036-14100-00	RES M/F 0805 CHIP 1K 5%
R237		036-13100-00	RES M/F 0805 CHIP 100E 5%	R426		036-11470-00	RES M/F 0805 CHIP 4E7 10%
R238		036-14820-00	RES M/F 0805 CHIP 8K2 5%	R427		036-11470-00	RES M/F 0805 CHIP 4E7 10%
R239		036-15220-00	RES M/F 0805 CHIP 22K 5%	R428		036-12220-00	RES M/F 0805 CHIP 22E 5%
R240		036-16100-00	RES M/F 0805 CHIP 100K 5%	R429		036-15270-00	RES M/F 0805 CHIP 27K 5%
R241		036-14120-00	RES M/F 0805 CHIP 1K2 5%	R430		036-14680-00	RES M/F 0805 CHIP 6K8 5%
R242		036-12220-00	RES M/F 0805 CHIP 22E 5%	R431		036-15680-00	RES M/F 0805 CHIP 68K 5%
R243		036-14220-00	RES M/F 0805 CHIP 2K2 5%	R432		036-12100-00	RES M/F 0805 CHIP 10E 5%
R244		036-12220-00	RES M/F 0805 CHIP 22E 5%	R433		036-13100-00	RES M/F 0805 CHIP 100E 5%
R245		036-12220-00	RES M/F 0805 CHIP 22E 5%	R434		036-12470-00	RES M/F 0805 CHIP 47E 5%
R246		036-13470-00	RES M/F 0805 CHIP 470E 5%	R437		036-14100-00	RES M/F 0805 CHIP 1K 5%
R247		036-12470-00	RES M/F 0805 CHIP 47E 5%	R500		030-03120-00	RES FILM 120E 5% 0.25W 7X2.5MM
R248		036-10000-00	RES M/F 0805 CHIP ZERO OHM				

## T2000-100 Mechanical & Miscellaneous Parts

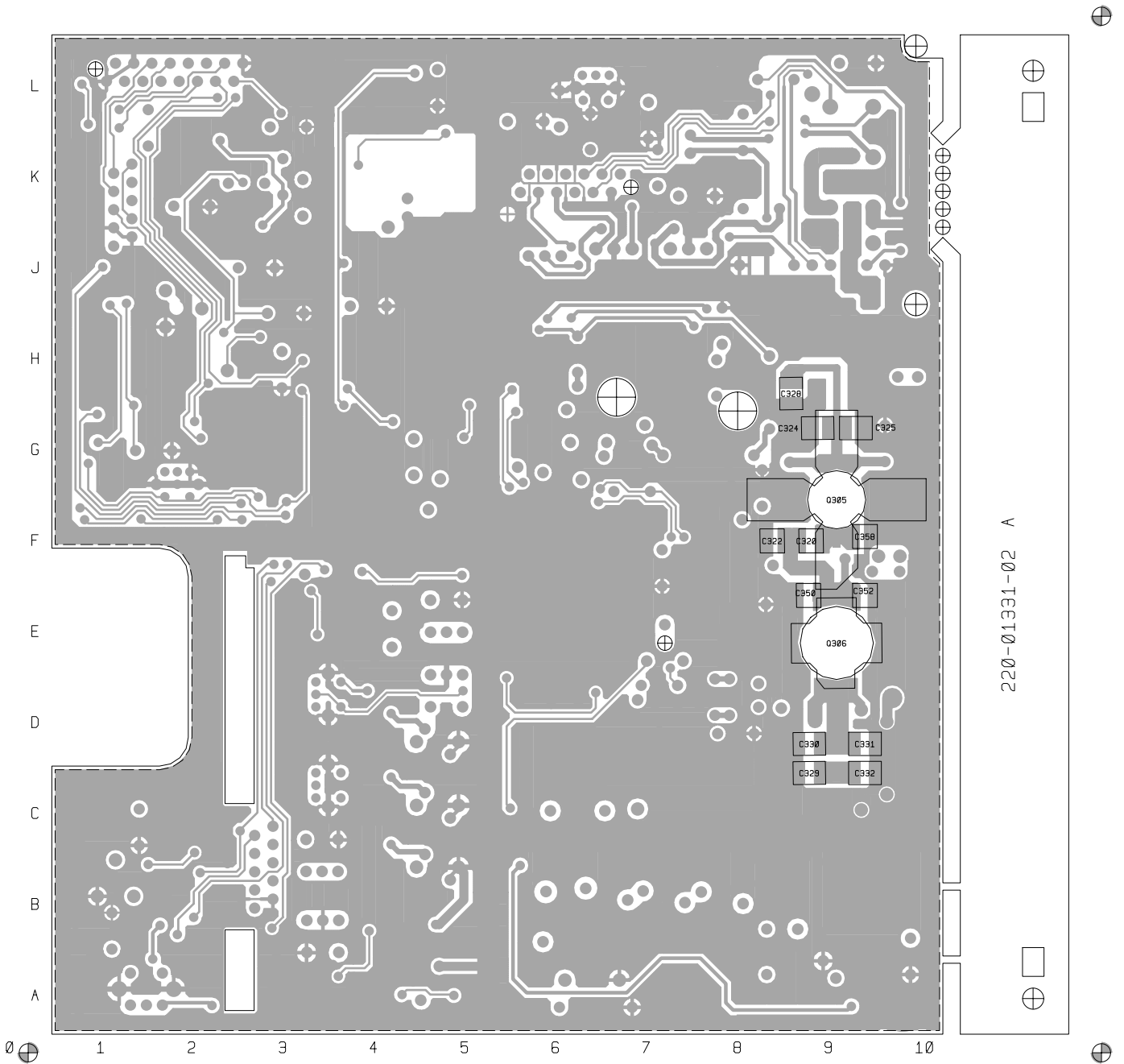
IPN	Description	IPN	Description
065-00010-08	BEAD FERRITE 4S3 3*0.7*10MM RED FOR L330, L313, L308		
065-00010-11	BEAD FERRITE 4S3 3*1*4MM RED FOR L1, L309, L309A		
205-00010-12	CABLE FLAT RBBN 16 CORE 16/7/0.1 GREY		
220-01331-02	PCB T2100 RF 220-270MHZ		
240-00020-54	PLUG 16 WAY 2X8 FLAT CABLE TERMN MICROMATCH		
240-02100-11	SKT COAX BNC 3.5MM PNL NO EARTH TAG		
303-23135-01	COVER BTTM A1M2505 T2000 PNTD CMLPT		
303-50070-00	CLIP A4M2648 XSTR MTG T2000PA/T555'S		
303-50076-00	CLIP A4M2524 HSINK T2000 RF PRE-DRIVER TO-39		
303-50077-00	CLIP A3M2525 T2000 AUDIO IC AND REG		
308-13103-01	CHASSIS A1M2503 D-CAST T2000 PNTD CMLPT		
316-85094-00	PLATE A4M2160 BNC MTG UK 5X5 SERIES		
319-01164-01	SHIELD A1M2507 DIE CAST T2000 MICROP		
319-01167-00	SHIELD RX A3M2594 T2000		
349-00020-30	SCREW TAPTITE M3X6MM PAN POZI BZ		
349-00020-31	SCREW TAPTITE M3X10MM PAN POZI BZ		
349-00020-32	SCREW TAPTITE M3X8MM PAN POZI BZ		
349-00020-34	SCREW M3*12 PAN POZI TAPTITE BZ		
349-00020-48	SCREW M4X25MM PAN POZI TAPTITE II BRIGHT ZINC		
349-00020-49	SCREW TAPTITE M4X35MM PAN POZI BZ		
352-00010-35	NUT 8-32 UNC HEX RF PWR XSTR MTG NUT FOR Q306		
360-01053-01	PLUG A3M2563 PLASTIC D-RANGE BLANKING		
362-01027-01	GASKET A4M2564 RUBBER SEAL T2000 MAIN CONN		
362-01028-00	GASKET A4M2652 130X3MM CONDUCT STRIPS T2000		
362-01058-00	GASKET TO-126 11.1X7.9 D2.4 SIL INSULATION		



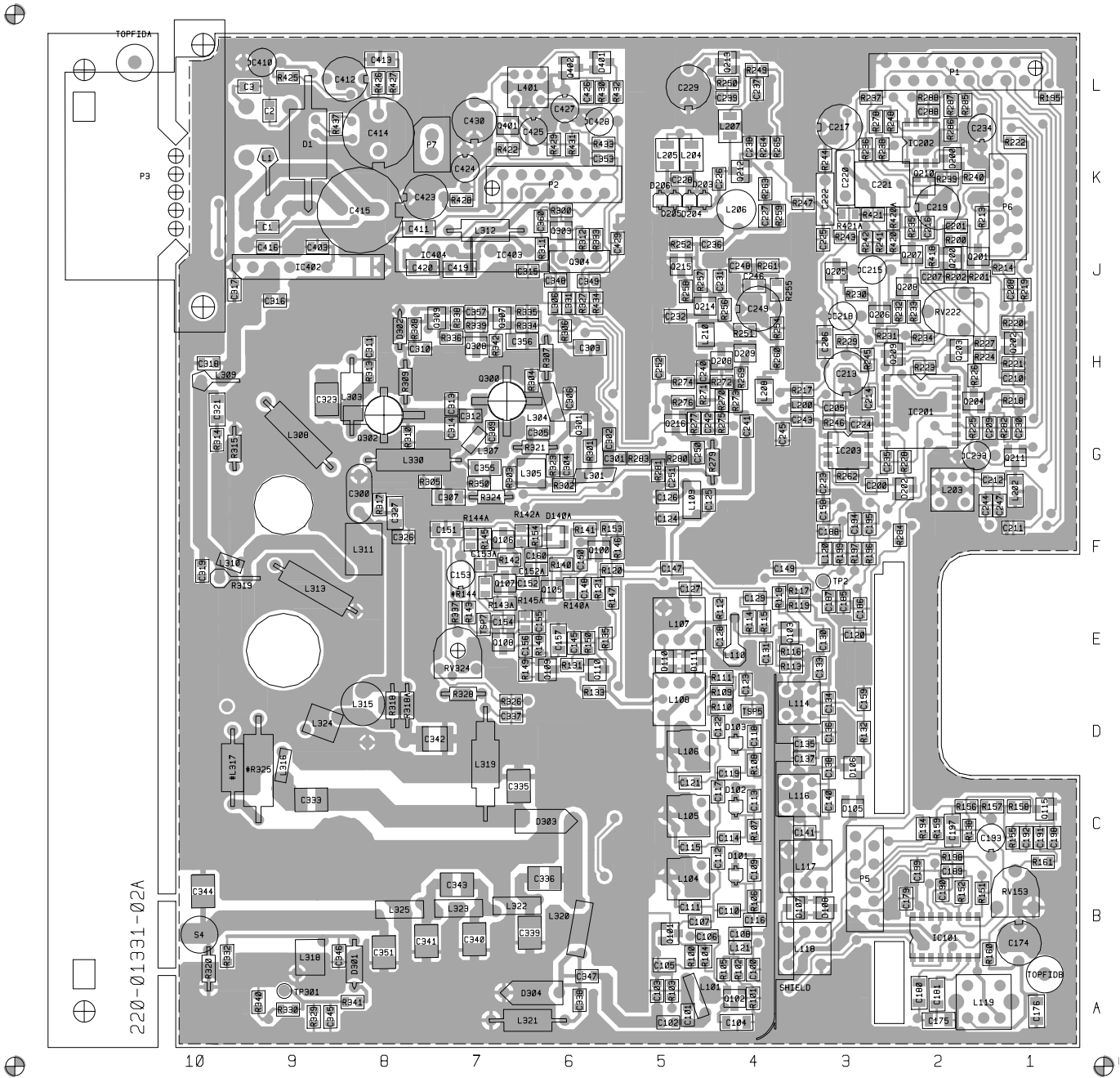
## T2000-100 Grid Reference Index (IPN 220-01331-02)

Device	PCB	Circuit	Device	PCB	Circuit	Device	PCB	Circuit	Device	PCB	Circuit
C1	1:J9	1-V9	C205	1:G3	1-A2	C334		1-M0	IC202	1:K2	
C2	1:L9	1-U8	C206	1:H3		C334A		1-N0			1-G4
C3	1:L10	1-V8	C207	1:J2	1-B6	C335	1:C7	1-R0			1-J4
C100	1:A4	1-T3	C208	1:J1	1-C7	C336	1:B6	1-S1	IC203	1:G3	1-D2
C101	1:A5	1-T2	C209	1:G1	1-C7	C337	1:D7	1-S1	IC402	1:J9	1-S8
C102	1:A5	1-S2	C210	1:H1	1-E7	C338	1:A6	1-S0	IC403	1:J7	1-L9
C103	1:A5	1-S2	C211	1:F1	1-E7	C339	1:B6	1-S0	IC404	1:J8	1-L8
C104	1:A4	1-S3	C212	1:G1	1-F7	C340	1:B7	1-T0			
C105	1:A5	1-R3	C213	1:H3	1-D4	C341	1:B8	1-T0	L1	1:K9	1-U9
C106	1:B5	1-R3	C214	1:H3	1-C4	C342	1:D7	1-O1	L101	1:A5	1-S2
C107	1:B5	1-Q3	C215	1:J3	1-E4	C343	1:B7	1-T0	L104	1:B5	1-P2
C108	1:B4	1-T3	C216	1:J2	1-E5	C344	1:B10	1-V0	L105	1:C5	1-O2
C109	1:B4	1-Q3	C217	1:K3	1-F4	C345	1:A9	1-S1	L106	1:D5	1-N2
C110	1:B4	1-P3	C218	1:H3	1-F5	C346	1:B9	1-T1	L107	1:E5	1-J3
C111	1:B5	1-P3	C219	1:K2	1-G4	C347	1:A6	1-S2	L108	1:D5	1-L3
C112	1:C4	1-P3	C220	1:K3	1-G5	C348	1:J6	1-U2	L109	1:F5	1-G3
C113	1:C4	1-O3	C221	1:K2	1-G5	C349	1:J6	1-V2	L110	1:E4	1-L5
C114	1:C4	1-O3	C222	1:K3	1-H3	C350	2:E9	1-N0	L114	1:D4	1-O5
C115	1:C5	1-O3	C223	1:G3	1-C2	C351	1:B8	1-T0	L116	1:C4	1-Q5
C116	1:B4	1-Q3	C224	1:G3	1-D2	C352	2:E9	1-O0	L117	1:B3	1-R5
C117	1:C4	1-N3	C225	1:J3	1-H3	C353	1:K6	1-V2	L118	1:B3	1-T5
C118	1:D4	1-N3	C226	1:K4	1-B1	C355	1:G7	1-I1	L119	1:A2	1-K8
C119	1:C4	1-N3	C227	1:K4	1-B0	#C355		1-P1	L120	1:F3	1-K4
C120	1:E3	1-J3	C228	1:K5	1-A0	C356	1:H7	1-Q1	L121	1:B4	1-T3
C121	1:C5	1-M2	C229	1:L5	1-B1	C357	1:H7	1-Q2	L200	1:G4	1-A2
C122	1:D4	1-M3	C230	1:G1	1-E7	C358	2:F9	1-N0	L202	1:G1	1-E7
C123	1:D4	1-M3	C231	1:J4	1-D0	C359		1-P1	L203	1:G2	1-G7
C124	1:F5	1-H2	C232	1:H5	1-E1	C360	1:J6	1-J1	L204	1:K5	1-A0
C125	1:F5	1-G2	C233	1:G2	1-D7	C370		1-P0	L205	1:K5	1-A0
C126	1:F5	1-G2	C234	1:K2	1-I3	C371		1-Q0	L206	1:K4	1-B0
C127	1:E5	1-K5	C235	1:G3	1-B3	C403	1:J9	1-S7	L207	1:K4	1-C1
C128	1:E4	1-L5	C236	1:J4	1-B0	C410	1:L9	1-S9	L208	1:H4	1-E2
C129	1:E4	1-M5	C237	1:L4	1-B1	C411	1:J8	1-T8	L210	1:H5	1-E1
C130	1:E3	1-M6	C238	1:K4	1-C0	C412	1:L8	1-T9	L301	1:G6	1-H0
C131	1:E4	1-M5	C239	1:L4	1-B2	C413	1:L8	1-U8	L303	1:G8	1-K1
C133	1:E3	1-O5	C240	1:H5	1-F1	C414	1:K8	1-U9	L304	1:H6	1-I0
C134	1:D3	1-O6	C241	1:G4	1-F2	C415	1:K8	1-U9	L305	1:G7	1-I0
C135	1:D3	1-P5	C242	1:G5	1-F0	C416	1:J9	1-U8	L306	1:J6	1-K1
C136	1:D3	1-P5	C243	1:G4	1-E2	C419	1:J7	1-K8	L307	1:G7	1-J0
C137	1:D3	1-P5	C244	1:F2	1-G7	C420	1:J8	1-L8	L308	1:H9	1-M0
C138	1:D3	1-P5	C245	1:G4	1-E2	C423	1:K8	1-M9	L309	1:H10	1-N1
C140	1:C3	1-Q6	C246	1:J4	1-D2	C424	1:K7	1-M9	L310	1:F10	1-N1
C141	1:C3	1-Q5	C247	1:F1	1-F7	C425	1:K6	1-O8	L311	1:F8	1-N1
C145	1:E6	1-T4	C248	1:J4	1-C2	C426	1:L6	1-P9	L312	1:J7	1-L2
C147	1:F5	1-O5	C249	1:J4	1-C2	C427	1:L6	1-Q8	L313	1:E8	1-P0
C148	1:E6	1-O4	C250	1:G5	1-G0	C428	1:L6	1-R8	L315	1:D8	1-O1
C149	1:F4	1-L4	C251	1:G5	1-G1	C429	1:J6	1-R8	L316	1:C9	1-Q1
C150	1:F6	1-P4	C252	1:H5	1-I1	C430	1:L7	1-N9	#L317	1:C10	1-P1
C151	1:F7	1-O5	C288	1:L2	1-J4	D1	1:K9	1-V9	L318	1:B9	1-T1
C152	1:F6	1-Q4	C300	1:G8	1-O1	D101	1:B4	1-P3	L319	1:C7	1-R1
C152A	1:F6	1-P4	C301	1:G6	1-G0	D102	1:C4	1-O3	L320	1:B6	1-S0
C153	1:F7	1-R4	C302	1:G6	1-G0	D103	1:D4	1-N3	L321	1:A7	1-S0
C153A	1:F7	1-R4	C303	1:H6	1-L1	D105	1:C3	1-T6	L322	1:B7	1-S1
C154	1:E7	1-S4	C304	1:G6	1-G0	D106	1:D3	1-T5	L323	1:B7	1-T1
C155	1:E6	1-T4	C305	1:G6	1-I0	D107	1:B4	1-S6	L324	1:D9	1-P1
C156	1:E7	1-T4	C306	1:H6	1-I0			1-S5	L325	1:B8	1-T1
C157	1:E6	1-U5	C307	1:F7	1-I1	D108	1:B3	1-S5	L330	1:G8	1-J1
C158	1:F3	1-K4	C309	1:G7	1-J0			1-S5	L331	1:J6	1-T2
C159	1:D3	1-U5	C310	1:H8	1-K0	D110	1:E5	1-K3	L401	1:L6	1-O9
C160	1:F6	1-Q4	C311	1:H8	1-L1			1-K3			
C174	1:B1	1-J8	C312	1:G7	1-J0	D111	1:E5	1-K3	P1	1:L1	1-A4
C175	1:A2	1-K8	C313	1:G7	1-J0			1-K2			1-A5
C176	1:A1	1-K8	C314	1:G7	1-J0	D140A	1:F6	1-Q4			1-A5
C179	1:B2		C315	1:J6	1-K1	D200	1:K2				1-A5
C180	1:A2	1-L8	C316	1:J9	1-O2	D202	1:G2	1-C5			1-A6
C181	1:A2	1-L8	C317	1:J10	1-O2	D203	1:K5	1-A0			1-A5
C185	1:E3	1-I6	C318	1:H10	1-L2	D204	1:K5	1-A0			1-A4
C186	1:E3	1-J6	C319	1:F10	1-M1	D205	1:K5	1-A0			1-A6
C187	1:E3	1-O8	C320	2:F9	1-N0	D206	1:K5	1-A0			1-A4
C188	1:F3	1-A6	C321	1:G10	1-M1	D208	1:H4	1-E1			1-A7
C189	1:B2	1-K6	C322	2:F8	1-N0	D209	1:H4	1-E1			1-A6
C190	1:B2	1-K7	C323	1:H9	1-K0	D301	1:A8	1-U1			1-A4
C191	1:C1	1-M6	C324	2:G9	1-L0	D302	1:H8	1-J0			1-A5
C192	1:C1	1-M7	C325	2:G9	1-L0	D303	1:C7	1-R1			1-A6
C193	1:C1	1-N7	C326	1:F8	1-N1	D304	1:A6	1-S0			1-A5
C194	1:F3	1-A8	C327	1:F8	1-N1	D401	1:L6	1-Q9			1-A6
C195	1:F3	1-A7	C328	2:H9	1-L0			1-Q9			1-W2
C197	1:C2	1-O7	C329	2:C9	1-R0				P2	1:K7	1-W3
C198	1:C1	1-M6	C330	2:D9	1-Q0						1-W3
C199	1:B2	1-M7	C331	2:D9	1-Q0	IC101	1:B2	1-K6			1-W3
C200	1:G3	1-B5	C332	2:C9	1-Q0			1-L7			1-W3
C201	1:J2	1-C7	C333	1:C9	1-R1			1-O7			1-W2
						IC201	1:G2	1-B4			1-W2

Device	PCB	Circuit	Device	PCB	Circuit	Device	PCB	Circuit	Device	PCB	Circuit
		1-W4	R110	1:D4	1-M3	R246	1:G3	1-D2	R420	1:J3	1-H4
		1-W3	R111	1:E4	1-M2	R247	1:K4	1-A1	R420A	1:J3	1-H4
		1-W4	R112	1:E4	1-K5	R248	1:L3	1-H4	R421	1:K3	1-I4
		1-W3	R113	1:E4	1-N5	R249	1:L4	1-C1	R421A	1:K3	1-I3
		1-W2	R114	1:E4	1-M5	R250	1:L4	1-B2	R422	1:K7	1-N9
		1-W2	R115	1:E4	1-M5	R251	1:H4	1-D1	R425	1:L9	1-S9
P3	1:L10	1-W9	R116	1:E4	1-N5	R252	1:J5	1-D0	R426	1:L8	1-T8
		1-W8	R117	1:E4	1-M6	R254	1:H4	1-D2	R427	1:L8	1-U8
		1-W9	R118	1:E4	1-N6	R255	1:J4	1-C2	R428	1:K7	1-M9
		1-W9	R119	1:E4	1-O5	R256	1:J4	1-D1	R429	1:K6	1-N8
		1-W8	R120	1:F6	1-O4	R257	1:J5	1-D0	R430	1:L6	1-P9
		1-W8	R121	1:E6	1-O4	R258	1:J5	1-E0	R431	1:K6	1-P8
		1-W9	R131	1:E6	1-U4	R259	1:K4	1-B0	R432	1:L6	1-Q9
P5	1:B3	1-P8	R132	1:D3	1-U6	R260	1:H4	1-D2	R433	1:K6	1-Q9
		1-P8	R133	1:D6	1-U4	R261	1:J4	1-C2	R434	1:J6	1-R9
		1-P6	R135	1:E6	1-U4	R262	1:G3	1-B2	R437	1:L9	1-V6
		1-P7	R138	1:C2	1-P7	R263	1:K4	1-C0			
		1-P6	R140	1:F6	1-P4	R264	1:K4	1-C0	SHIELD	1:D4	
		1-S6	R140A	1:E6	1-P4	R265	1:K4	1-C1	S4	1:B10	1-W1
		1-S7	R141	1:F6	1-P4	R269	1:H4	1-E1			
		1-P7	R142	1:F7	1-R4	R270	1:H4	1-E0	TP2	1:F3	1-J9
		1-P7	R142A	1:F7	1-P4	R271	1:H5	1-F0	TSP5	1:D4	1-N4
		1-P7	R143	1:E7	1-S4	R272	1:H4	1-F1	TSP7	1:E7	1-S4
P6	1:J1	1-H9	R143A	1:E7	1-Q4	R273	1:H4	1-F2	TP301	1:A9	1-S1
		1-H9	#R144	1:E7	1-R4	R274	1:H5	1-G1			
		1-D8	R144A	1:F7	1-S4	R275	1:G4	1-F0			
		1-D9	R145	1:F7	1-R4	R276	1:H5	1-F0			
		1-D8	R145A	1:E7	1-S4	R277	1:G5	1-F0			
		1-H8	R146	1:F6	1-S5	R278	1:L3	1-I4			
		1-D9	R147	1:E6	1-S5	R279	1:G4	1-F1			
		1-D9	R148	1:E6	1-S5	R280	1:G5	1-G0			
		1-H8	R149	1:E7	1-T5	R281	1:G5	1-G0			
		1-H8	R150	1:E6	1-T4	R282	1:G1	1-E7			
P7	1:K8	1-V7	R151	1:B2	1-K7	R283	1:G5	1-G0			
		1-V7	R152	1:B2	1-K6	R284	1:F2	1-J4			
			RV153	1:B1	1-L6	R285	1:L2	1-I4			
Q100	1:F6	1-O4	R153	1:F6	1-O4	R286	1:K2	1-I3			
Q101	1:B5	1-Q2	R154	1:F6	1-Q4	R287	1:L2	1-I4			
Q102	1:A4	1-R3	R155	1:C1	1-N7	R288	1:L2	1-J4			
Q103	1:E4	1-N5	R156	1:C2	1-N8	R300	1:K6	1-J2			
Q105	1:E6	1-P4	R157	1:C1	1-N7	R301	1:G6	1-H0			
Q106	1:F7	1-Q4	R158	1:C1	1-N7	R302	1:G6	1-H0			
Q107	1:F7	1-R4	R159	1:C2	1-P8	R303	1:G7	1-H0			
Q108	1:E7	1-S4	R160	1:B1	1-L8	R304	1:H6	1-I0			
Q109	1:E6	1-T4	R161	1:C1	1-M6	R305	1:G8	1-I0			
Q110	1:E6	1-U4	R194	1:C2	1-O6	R306	1:H6	1-L1			
Q115	1:C1	1-N6	R195	1:L1	1-A7	R307	1:H6	1-I0			
Q200	1:J2	1-C7	R196	1:F3	1-J7	R308	1:H8	1-J1			
Q201	1:J2	1-B7	R197	1:F3	1-I7	R309	1:H8	1-K0			
Q202	1:H1	1-D7	R198	1:C2	1-M7	R310	1:G8	1-K0			
Q203	1:H2	1-C5	R199	1:F3	1-J9	R311	1:J6	1-J1			
Q204	1:H2	1-C5	R200	1:J2	1-C7	R312	1:J6	1-K1			
Q205	1:J3	1-D4	R201	1:J2	1-C7	R313	1:H8	1-L1			
Q206	1:H3	1-D5	R202	1:J2	1-C7	R314	1:G10	1-M1			
Q207	1:J2	1-E5	R213	1:K2	1-B6	R315	1:G10	1-M0			
Q208	1:J2	1-E5	R214	1:J1	1-B7	R316		1-O0			
Q209	1:H3	1-E4	R217	1:H4		R317	1:F8	1-N1			
Q210	1:K2	1-F4	R218	1:H1	1-C7	R318	1:D8	1-O1			
Q211	1:G1	1-E7	R219	1:J1	1-D7	R318A	1:D8	1-O1			
Q212	1:K4	1-C0	R220	1:H1	1-D7	R319	1:F10	1-M1			
Q213	1:L4	1-B1	R221	1:H1	1-D7	R320	1:B10	1-W0			
Q214	1:J5	1-E0	RV222	1:H2	1-C6	R321	1:G6	1-H0			
Q215	1:J5	1-E0	R222	1:K1	1-F7	R322		1-O0			
Q216	1:G5	1-F0	R223	1:H2	1-B5	R323	1:G6	1-H0			
Q300	1:H7	1-J0	R224	1:H2	1-C6	RV324	1:E7	1-U2			
Q301	1:G6	1-H0	R225	1:G2	1-B5	R324	1:F7	1-I1			
Q302	1:G8	1-K0	R226	1:H2	1-C5	#R325	1:C9	1-P1			
Q303	1:J6	1-J1	R227	1:H2	1-C5	R326	1:D7	1-U2			
Q304	1:J6	1-K1	R228	1:G2	1-C5	R327	1:J6	1-V2			
Q305	2:F9	1-N0	R229	1:H3	1-D4	R328	1:D7	1-R1			
Q306	2:E9	1-P0	R230	1:J3	1-D4	R329	1:A9	1-T1			
Q307	1:H7	1-Q1	R231	1:H3	1-D5	R330	1:A9	1-U1			
Q308	1:H7	1-Q1	R232	1:H2	1-D5	R331		1-O0			
Q309	1:H7	1-R2	R233	1:H2	1-E4	R332	1:B10	1-V1			
Q401	1:L7	1-O9	R234	1:H2	1-E5	R333	1:J6	1-K2			
Q402	1:L6	1-P9	R235	1:J2	1-F5	R334	1:H6	1-Q2			
R100	1:A5	1-R3	R236	1:K3	1-F5	R335	1:H6	1-R1			
R101	1:A4	1-S3	R237	1:L3	1-F5	R336	1:H7	1-Q1			
R102	1:A4	1-S3	R238	1:K3	1-F4	R337	1:E7	1-U2			
R103	1:A5	1-R3	R239	1:K2	1-G4	R338	1:H7	1-Q2			
R104	1:A5	1-Q3	R240	1:K2	1-G4	R339	1:H7	1-Q2			
R105	1:A4	1-S3	R241	1:J3	1-G5	R340	1:A9	1-T2			
R106	1:B4	1-Q3	R242	1:J3	1-H4	R341	1:A8	1-U1			
R107	1:C4	1-O3	R243	1:J3	1-H4	R342	1:H7	1-Q1			
R108	1:D4	1-N3	R244	1:K3	1-I3	R350	1:G7	1-I0			
R109	1:D4	1-L3	R245	1:H3	1-D3	R418	1:J2	1-D6			



T2000-100 RF PCB (IPN 220-01331-02) - Bottom Side



T2000-100 RF PCB (IPN 220-01331-02) - Top Side

# 7.2 T2000-200 RF PCB

## T2000-200 Parts List (IPN 220-01202-10)

### Parts List Amendments

Ref	Var	IPN	Description	Ref	Var	IPN	Description
2*6WAY		240-00020-51	PLUG 12 WAY 2*6 FLAT CABLE TERMN	C197		015-06100-08	CAP CER 1206 CHIP 100N 10% X7R 50V
C1		015-24100-08	CAP CER 0805 CHIP 1N 10% X7R 50V	C198		015-23220-01	CAP CER 0805 CHIP 220P 5% NPO 50V
C2		015-24100-08	CAP CER 0805 CHIP 1N 10% X7R 50V	C199		015-24100-08	CAP CER 0805 CHIP 1N 10% X7R 50V
C3		015-24100-08	CAP CER 0805 CHIP 1N 10% X7R 50V	C200		015-25100-08	CAP CER 0805 CHIP 10N 10% X7R 50V
C100		015-25100-08	CAP CER 0805 CHIP 10N 10% X7R 50V	C201		015-24100-08	CAP CER 0805 CHIP 1N 10% X7R 50V
C101		015-22560-01	CAP CER 0805 CHIP 56P 5% NPO 50V	C202		020-58470-05	CAP ELECT AI RDL 47M 16V 6.3X7MM
C102		015-23180-01	CAP CER 0805 CHIP 180P 5% NPO 50V	C203		020-57470-10	CAP ELECT AI RDL 4U7 50V LO ESR
C103		015-25100-08	CAP CER 0805 CHIP 10N 10% X7R 50V	C205		015-24100-08	CAP CER 0805 CHIP 1N 10% X7R 50V
C104		015-06100-08	CAP CER 1206 CHIP 100N 10% X7R 50V	C206		015-06100-08	CAP CER 1206 CHIP 100N 10% X7R 50V
C105		015-22100-01	CAP CER 0805 CHIP 10P +/-0.5P NPO 50V	C207		015-25100-08	CAP CER 0805 CHIP 10N 10% X7R 50V
C106		015-24100-08	CAP CER 0805 CHIP 1N 10% X7R 50V	C213		020-58470-05	CAP ELECT AI RDL 47M 16V 6.3X7MM
C107		015-23100-01	CAP CER 0805 CHIP 100P 5% NPO 50V	C214		015-24100-08	CAP CER 0805 CHIP 1N 10% X7R 50V
C108		015-24100-08	CAP CER 0805 CHIP 1N 10% X7R 50V	C215		020-57470-10	CAP ELECT AI RDL 4U7 50V LO ESR
C109		015-22270-01	CAP CER 0805 CHIP 27P 5% NPO 50V	C216		015-25100-08	CAP CER 0805 CHIP 10N 10% X7R 50V
C110		015-23270-01	CAP CER 0805 CHIP 270P 5% NPO 50V	C217		020-58470-05	CAP ELECT AI RDL 47M 16V 6.3X7MM
C111		015-24100-08	CAP CER 0805 CHIP 1N 10% X7R 50V	C218		020-57470-10	CAP ELECT AI RDL 4U7 50V LO ESR
C112		015-22330-01	CAP CER 0805 CHIP 33P 5% NPO 50V	C219		020-58470-05	CAP ELECT AI RDL 47M 16V 6.3X7MM
C113		015-23270-01	CAP CER 0805 CHIP 270P 5% NPO 50V	C220		022-55150-10	CAP MYLAR AI 15N 5% 63V POTTED
C114		015-24100-08	CAP CER 0805 CHIP 1N 10% X7R 50V	C221		022-57100-02	CAP MYLAR AI 1M 20% 50V POTTED
C115		015-22270-01	CAP CER 0805 CHIP 27P 5% NPO 50V	C222		022-06100-15	CAP MET POLYSTR 100N 5% 50V 5.6MM HI
C116		015-24100-08	CAP CER 0805 CHIP 1N 10% X7R 50V	C223		015-24100-08	CAP CER 0805 CHIP 1N 10% X7R 50V
C121		015-23100-01	CAP CER 0805 CHIP 100P 5% NPO 50V	C224		015-24100-08	CAP CER 0805 CHIP 1N 10% X7R 50V
C122		015-24100-08	CAP CER 0805 CHIP 1N 10% X7R 50V	C225		015-24100-08	CAP CER 0805 CHIP 1N 10% X7R 50V
C123		015-25100-08	CAP CER 0805 CHIP 10N 10% X7R 50V	C226		015-21180-01	CAP CER 0805 CHIP 1P8 +/-0.25 NPO 50V
C124		015-22220-01	CAP CER 0805 CHIP 22P 5% NPO 50V	C227		015-24100-08	CAP CER 0805 CHIP 1N 10% X7R 50V
C125		015-22120-01	CAP CER 0805 CHIP 12P 5% NPO 50V	C228		015-24100-08	CAP CER 0805 CHIP 1N 10% X7R 50V
C126		015-22220-01	CAP CER 0805 CHIP 22P 5% NPO 50V	C229		020-58470-05	CAP ELECT AI RDL 47M 16V 6.3X7MM
C127		015-22390-01	CAP CER 0805 CHIP 39P 5% NPO 50V	C230		015-25100-08	CAP CER 0805 CHIP 10N 10% X7R 50V
C128		015-25100-08	CAP CER 0805 CHIP 10N 10% X7R 50V	C231		015-21470-01	CAP CER 0805 CHIP 4P7 +/-0.25P NPO 50V
C129		015-25100-08	CAP CER 0805 CHIP 10N 10% X7R 50V	C232		015-22150-01	CAP CER 0805 CHIP 15P 5% NPO 50V
C130		015-25100-08	CAP CER 0805 CHIP 10N 10% X7R 50V	C234		020-57470-10	CAP ELECT AI RDL 4U7 50V LO ESR
C134		015-22390-01	CAP CER 0805 CHIP 39P 5% NPO 50V	C239		015-25100-08	CAP CER 0805 CHIP 10N 10% X7R 50V
C135		015-23180-01	CAP CER 0805 CHIP 180P 5% NPO 50V	C240		015-24100-08	CAP CER 0805 CHIP 1N 10% X7R 50V
C136		015-21560-01	CAP CER 0805 CHIP 5P6 +/-0.25P NPO 50V	C241		015-25100-08	CAP CER 0805 CHIP 10N 10% X7R 50V
C137		015-23180-01	CAP CER 0805 CHIP 180P 5% NPO 50V	C243		015-24100-08	CAP CER 0805 CHIP 1N 10% X7R 50V
C138		015-25100-08	CAP CER 0805 CHIP 10N 10% X7R 50V	C245		015-22180-01	CAP CER 0805 CHIP 18P 5% NPO 50V
C140		015-25100-08	CAP CER 0805 CHIP 10N 10% X7R 50V	C246		015-25100-08	CAP CER 0805 CHIP 10N 10% X7R 50V
C141		015-22390-01	CAP CER 0805 CHIP 39P 5% NPO 50V	C248		015-25100-08	CAP CER 0805 CHIP 10N 10% X7R 50V
C142		015-25100-08	CAP CER 0805 CHIP 10N 10% X7R 50V	C257		015-22180-01	CAP CER 0805 CHIP 18P 5% NPO 50V
C145		015-23100-01	CAP CER 0805 CHIP 100P 5% NPO 50V	C300		020-07470-04	CAP ELECT RADL 4M7 25V 20% 8X13MM SOLID
C146		015-23270-01	CAP CER 0805 CHIP 270P 5% NPO 50V	C301		015-24100-08	CAP CER 0805 CHIP 1N 10% X7R 50V
C147		015-25100-08	CAP CER 0805 CHIP 10N 10% X7R 50V	C302		015-22270-01	CAP CER 0805 CHIP 27P 5% NPO 50V
C148		015-22470-01	CAP CER 0805 CHIP 47P 5% NPO 50V	C303		015-06100-08	CAP CER 1206 CHIP 100N 10% X7R 50V
C149		015-25100-08	CAP CER 0805 CHIP 10N 10% X7R 50V	C304		015-24100-08	CAP CER 0805 CHIP 1N 10% X7R 50V
C150		015-23100-01	CAP CER 0805 CHIP 100P 5% NPO 50V	C305		015-23120-01	CAP CER 0805 CHIP 120P 5% NPO 50V
C151		015-06100-08	CAP CER 1206 CHIP 100N 10% X7R 50V	C306		015-23120-01	CAP CER 0805 CHIP 120P 5% NPO 50V
C152		015-23100-01	CAP CER 0805 CHIP 100P 5% NPO 50V	C307		015-06100-08	CAP CER 1206 CHIP 100N 10% X7R 50V
C152A		015-25100-08	CAP CER 0805 CHIP 10N 10% X7R 50V	C308		015-06100-08	CAP CER 1206 CHIP 100N 10% X7R 50V
C153		020-57470-10	CAP ELECT AI RDL 4U7 50V LO ESR	C309		015-24100-08	CAP CER 0805 CHIP 1N 10% X7R 50V
C153A		015-23100-01	CAP CER 0805 CHIP 100P 5% NPO 50V	C310		015-24470-08	CAP CER 0805 CHIP 4N7 10% X7R 50V
C154		015-25100-08	CAP CER 0805 CHIP 10N 10% X7R 50V	C311		015-22470-01	CAP CER 0805 CHIP 47P 5% NPO 50V
C155		015-23100-01	CAP CER 0805 CHIP 100P 5% NPO 50V	C312		015-23120-01	CAP CER 0805 CHIP 120P 5% NPO 50V
C156		036-10000-00	RES M/F 0805 CHIP ZERO OHM	C313		015-23680-08	CAP CER 0805 CHIP 680P 10% X7R 50V
C157		015-06100-08	CAP CER 1206 CHIP 100N 10% X7R 50V	C315		015-24100-08	CAP CER 0805 CHIP 1N 10% X7R 50V
C158		015-25100-08	CAP CER 0805 CHIP 10N 10% X7R 50V	C316		015-24100-08	CAP CER 0805 CHIP 1N 10% X7R 50V
C174		020-58470-05	CAP ELECT AI RDL 47M 16V 6.3X7MM	C317		015-24100-08	CAP CER 0805 CHIP 1N 10% X7R 50V
C175		015-06100-08	CAP CER 1206 CHIP 100N 10% X7R 50V	C318		015-24100-08	CAP CER 0805 CHIP 1N 10% X7R 50V
C176		015-06100-08	CAP CER 1206 CHIP 100N 10% X7R 50V	C319		015-06100-08	CAP CER 1206 CHIP 100N 10% X7R 50V
C179		015-25100-08	CAP CER 0805 CHIP 10N 10% X7R 50V	C320		015-24100-08	CAP CER 0805 CHIP 1N 10% X7R 50V
C180		015-05470-08	CAP CER 1206 CHIP 47N 10% X7R 50V	C321		015-06100-08	CAP CER 1206 CHIP 100N 10% X7R 50V
C181		015-05470-08	CAP CER 1206 CHIP 47N 10% X7R 50V	C322		015-22470-01	CAP CER 0805 CHIP 47P 5% NPO 50V
C185		015-25100-08	CAP CER 0805 CHIP 10N 10% X7R 50V	C323		015-03270-06	CAP CER 1210 CHIP 270P NPO 500V GRM42
C186		015-25100-08	CAP CER 0805 CHIP 10N 10% X7R 50V	C325		015-03680-03	CAP CER CHIP 680P 5% NPO 100V HIQ GRH111
C187		015-24100-08	CAP CER 0805 CHIP 1N 10% X7R 50V	C326		011-05470-02	CAP CER 47N T/C FZ 63V
C188		015-23100-01	CAP CER 0805 CHIP 100P 5% NPO 50V	C327		015-03680-06	CAP CER 1210 CHIP 680P NPO 200V GRM42
*C189		015-23470-08	CAP CER 0805 CHIP 470P 10% X7R 50V	C328		015-24100-08	CAP CER 0805 CHIP 1N 10% X7R 50V
*C190		015-23470-08	CAP CER 0805 CHIP 470P 10% X7R 50V	C329		015-03150-06	CAP CER 1210 CHIP 150P NPO 500V GRM42-2
C191		015-24100-08	CAP CER 0805 CHIP 1N 10% X7R 50V	C330		015-03120-06	CAP CER 1210 CHIP 120P NPO 500V GRM42-2
C192		015-22330-01	CAP CER 0805 CHIP 33P 5% NPO 50V	C333		015-02560-06	CAP CER 1210 CHIP 56P NPO 500V GRM42-2
C193		020-57470-10	CAP ELECT AI RDL 4U7 50V LO ESR	C334		015-02390-06	CAP CER 1210 CHIP 39P NPO 500V GRM42-2
C194		015-24100-08	CAP CER 0805 CHIP 1N 10% X7R 50V	C336		015-02680-06	CAP CER 1210 CHIP 68P NPO 500V GRM42-2
C195		015-24100-08	CAP CER 0805 CHIP 1N 10% X7R 50V	C337		015-24100-08	CAP CER 0805 CHIP 1N 10% X7R 50V
				C338		015-02220-06	CAP CER 1210 CHIP 22P 5% NPO 500V GRM42

Ref	Var	IPN	Description	Ref	Var	IPN	Description
C339		015-02220-06	CAP CER 1210 CHIP 22P 5% NPO 500V GRM42	L310		052-56140-35	COIL A/W 3.5T/4.0MM HOR 0.56MM WIRE
C340		015-02560-03	CAP CER CHIP 56P 5% 500V HIQ GRH111 2.8M	L311		052-56130-25	COIL A/W 2.5T/3.0MM HOR 0.56MM WIRE
C341		015-02820-03	CAP CER CHIP 82P 5% NPO 500V HIQ GRH111	L312		056-00021-60	IND FXD 330NH 6.6X2.7MM AXIAL NON MAGNET
C342		015-22100-01	CAP CER 0805 CHIP 10P +/-0.5P NPO 50V	L313		052-56130-75	COIL A/W 7.5T/3.0MM HOR 0.56MM WIRE
C343		015-24220-08	CAP CER 0805 CHIP 2N2 10% X7R 50V	L314		052-56145-85	COIL A/W 8.5T/4.5MM HOR 0.56MM WIRE
C344		015-02470-06	CAP CER 1210 CHIP 47P NPO 500V GRM42-2	L315		065-00010-01	BEAD FERRITE 3B 6 HOLE
C345		015-24100-08	CAP CER 0805 CHIP 1N 10% X7R 50V	L316		052-56140-35	COIL A/W 3.5T/4.0MM HOR 0.56MM WIRE
C346		015-22150-01	CAP CER 0805 CHIP 15P 5% NPO 50V	L317		065-00010-01	BEAD FERRITE 3B 6 HOLE
C347		015-22270-01	CAP CER 0805 CHIP 27P 5% NPO 50V	L318		052-56130-25	COIL A/W 2.5T/3.0MM HOR 0.56MM WIRE
C348		015-24100-08	CAP CER 0805 CHIP 1N 10% X7R 50V	L319		056-00021-55	IND FXD 3.3UH 10% AXIAL 10X4.5MM PHENOLIC
C349		015-24100-08	CAP CER 0805 CHIP 1N 10% X7R 50V	L320		052-56140-55	COIL A/W 5.5T/4.0MM HOR 0.56MM WIRE
C350		015-02820-06	CAP CER 1210 CHIP 82P NPO 500V GRM42-2	L321		052-56145-85	COIL A/W 8.5T/4.5MM HOR 0.56MM WIRE
C353		015-24100-08	CAP CER 0805 CHIP 1N 10% X7R 50V	L322		052-56145-45	COIL A/W 4.5T/4.5MM HOR 0.56MM WIRE
C356		015-24100-08	CAP CER 0805 CHIP 1N 10% X7R 50V	L323		052-56130-55	COIL A/W 5.5T/3.0MM HOR 0.56MM WIRE
C357		015-06100-08	CAP CER 1206 CHIP 100N 10% X7R 50V	L324		065-00010-01	BEAD FERRITE 3B 6 HOLE
C360		015-23150-01	CAP CER 0805 CHIP 150P 5% NPO 50V	L325		052-56130-15	COIL A/W 1.5T/3.0MM HOR 0.56MM WIRE
C403		015-23470-08	CAP CER 0805 CHIP 470P 10% X7R 50V	L326		052-56145-85	COIL A/W 8.5T/4.5MM HOR 0.56MM WIRE
C410		020-57470-10	CAP ELECT AI RDL 4U7 50V LO ESR	L327		052-08125-15	COIL A/W 1.5T/2.5MM HOR 0.8MM WIRE
C411		015-06100-08	CAP CER 1206 CHIP 100N 10% X7R 50V	L328		052-56135-55	COIL A/W 5.5T/3.5MM HOR 0.56MM WIRE
C412		020-58470-05	CAP ELECT AI RDL 47M 16V 6.3X7MM	L329		052-56135-15	COIL A/W 1.5T/3.5MM HOR 0.56MM WIRE
C413		015-06100-08	CAP CER 1206 CHIP 100N 10% X7R 50V	L330		052-56125-35	COIL A/W 3.5T/2.5MM HOR 0.56MM WIRE
C414		020-09470-05	CAP ELECT RADL 470M 16V 10X12.5MM	L331		057-10005-03	IND 0805 BLM21B05 EMI SUPRSN 5 OHM AT 10
C415		020-19100-02	CAP ELECT RADL 1000M 16V 12X20MM	L332		052-56120-15	COIL A/W 1.5T/2.0MM HOR 0.56MM WIRE
C416		015-24100-08	CAP CER 0805 CHIP 1N 10% X7R 50V	L401		050-00016-50	COIL TAIT NO 650 455KHZ 5.6MM CAN
C419		015-06100-08	CAP CER 1206 CHIP 100N 10% X7R 50V	P1		240-00026-24	CONN PADLE BRD 16 WAY MICRO MATCH 1-2155
C420		015-06100-08	CAP CER 1206 CHIP 100N 10% X7R 50V	P2		240-00026-26	CONN PADLE BRD 12 WAY MICRO MATCH 1-2155
C423		020-08560-09	CAP ELECT RADL 56M 50V 6.3X15.5MM L/S	P3		240-00026-21	PLUG CAP HOUSING 7-POS CONN 172039-1
C424		020-57470-10	CAP ELECT AI RDL 4U7 50V LO ESR	P4		240-00010-76	PLUG HEADER 10WAY MICROMATCH PCB MTD 1-
C425		020-57470-10	CAP ELECT AI RDL 4U7 50V LO ESR	P5		240-00010-76	PLUG HEADER 10WAY MICROMATCH PCB MTD 1-
C426		015-24470-08	CAP CER 0805 CHIP 4N7 10% X7R 50V	P6		240-00010-76	PLUG HEADER 10WAY MICROMATCH PCB MTD 1-
C427		020-57470-10	CAP ELECT AI RDL 4U7 50V LO ESR	P7		240-00020-72	HEADER 2 WAY PCB MTG ULTRTEX
C428		020-57470-10	CAP ELECT AI RDL 4U7 50V LO ESR	Q100		000-10003-12	(S) XSTR SMD BFR31 N JFET SOT-23
C429		015-24100-08	CAP CER 0805 CHIP 1N 10% X7R 50V	Q101		000-10095-10	(S) XSTR SMD MMBR951 NPN UHF SOT-23
C430		020-08560-09	CAP ELECT RADL 56M 50V 6.3X15.5MM L/S	Q102		000-10008-57	(S) XSTR SMD BCW70 PNP SOT23 AF SML SIG
C451		015-24100-08	CAP CER 0805 CHIP 1N 10% X7R 50V	Q103		000-10095-10	(S) XSTR SMD MMBR951 NPN UHF SOT-23
C455		015-24100-08	CAP CER 0805 CHIP 1N 10% X7R 50V	Q104		000-10008-30	(S) XSTR SMD BSS83 N MOSFET ENHC SOT143
D1		001-00012-90	(S) DIODE MR2520L OVERVOLT SUPPRESSOR	Q105		000-10095-10	(S) XSTR SMD MMBR951 NPN UHF SOT-23
D101		001-10041-90	(S) DIODE SMD BB419 VARACTOR	Q106		000-10008-48	(S) XSTR SMD BCW60/BC848B215 NPN SOT23 A
D101A		001-10041-90	(S) DIODE SMD BB419 VARACTOR	Q107		000-10008-92	(S) XSTR SMD BFS17 NPN SOT-23 UHF SMALL
D102		001-10041-90	(S) DIODE SMD BB419 VARACTOR	Q108		000-10008-92	(S) XSTR SMD BFS17 NPN SOT-23 UHF SMALL
D102A		001-10041-90	(S) DIODE SMD BB419 VARACTOR	Q109		000-10008-24	(S) XSTR SMD BF824 PNP SOT-23 RF SMALL S
D103		001-10041-90	(S) DIODE SMD BB419 VARACTOR	Q115		000-10008-48	(S) XSTR SMD BCW60/BC848B215 NPN SOT23 A
D103A		001-10041-90	(S) DIODE SMD BB419 VARACTOR	Q203		000-10008-48	(S) XSTR SMD BCW60/BC848B215 NPN SOT23 A
D110		001-10000-17	(S) DIODE SMD DUAL BAT-17 SCHOTTKY SML S	Q204		000-10008-48	(S) XSTR SMD BCW60/BC848B215 NPN SOT23 A
D111		001-10000-17	(S) DIODE SMD DUAL BAT-17 SCHOTTKY SML S	Q205		000-10008-57	(S) XSTR SMD BCW70 PNP SOT23 AF SML SIG
D140A		001-10000-18	(S) DIODE SMD BAT18 BANDSWITCH SOT-23 S	Q206		000-10008-48	(S) XSTR SMD BCW60/BC848B215 NPN SOT23 A
D200		001-10000-99	(S) DIODE SMD BAV99 DUAL SWITCH SINGLE INL	Q207		000-10008-57	(S) XSTR SMD BCW70 PNP SOT23 AF SML SIG
D202		001-10000-70	(S) DIODE SMD BAV70 DUAL SWITCH SOT-23 C	Q208		000-10008-48	(S) XSTR SMD BCW60/BC848B215 NPN SOT23 A
D203		001-10041-90	(S) DIODE SMD BB419 VARACTOR	Q209		000-10008-57	(S) XSTR SMD BCW70 PNP SOT23 AF SML SIG
D204		001-10041-90	(S) DIODE SMD BB419 VARACTOR	Q210		000-10003-12	(S) XSTR SMD BFR31 N JFET SOT-23
D205		001-10041-90	(S) DIODE SMD BB419 VARACTOR	Q212		000-10005-12	(S) XSTR SMD BF512 SEMI FET N-CHNL SOT-2
D206		001-10041-90	(S) DIODE SMD BB419 VARACTOR	Q213		000-10008-48	(S) XSTR SMD BCW60/BC848B215 NPN SOT23 A
D208		001-10000-18	(S) DIODE SMD BAT18 BANDSWITCH SOT-23 SI	Q214		000-10008-92	(S) XSTR SMD BFS17 NPN SOT-23 UHF SMALL
D209		001-10000-18	(S) DIODE SMD BAT18 BANDSWITCH SOT-23 SI	Q215		000-10008-92	(S) XSTR SMD BFS17 NPN SOT-23 UHF SMALL
D301		001-00013-45	(S) DIODE SCHOTTKY 1SS972	Q301		000-10095-10	(S) XSTR SMD MMBR951 NPN UHF SOT-23
D303		001-00012-50	(S) DIODE PIN UM9401 UHF PWR SWITCH	Q302		000-10038-66	(S) XSTR SMD MRF3866 SO-8
D304		001-00012-50	(S) DIODE PIN UM9401 UHF PWR SWITCH	Q303		000-10008-48	(S) XSTR SMD BCW60/BC848B215 NPN SOT23 A
D305		001-00010-26	(S) DIODE BA482 RF SWITCH	Q304		000-00012-15	(S) XSTR BD234 PNP AF PWR TO126
D401		001-10000-70	(S) DIODE SMD BAV70 DUAL SWITCH SOT-23 C	Q305		000-00023-14	(S) XSTR BF043 NPN TO-39 VHF PWR 4W
IC101		002-10033-71	(S) IC SMD MC3371D-R2 FM IF DETECT RSSI	Q306		000-00032-90	(S) XSTR MRF1946A VHF PWR 30W STUD MTG
IC201		002-10451-58	(S) IC SMD MC145158DW2 FREQ SYNTH SOIC	Q307		000-10008-07	(S) XSTR SMD BC807 PNP SOT-23 AF LO PWR
IC202		002-10330-78	(S) IC MC33078D-R2 DUAL AMP LO NOISE SO	Q308		000-10008-07	(S) XSTR SMD BC807 PNP SOT-23 AF LO PWR
IC203		002-10017-51	(S) IC SMD MC12016D DUAL MOD PRESC 40/4	Q309		000-10008-48	(S) XSTR SMD BCW60/BC848B215 NPN SOT23 A
IC204		002-10340-02	(S) IC SMD MC34002D LIN.OP-AMP DUAL SO8	Q401		000-10008-57	(S) XSTR SMD BCW70 PNP SOT23 AF SML SIG
IC402		002-00013-70	(S) IC TDA1020 AF PWR AMP 9PIN SIL	Q402		000-10008-17	(S) XSTR SMD BC817-25 NPN SOT-23 AF LO P
IC403		002-00078-08	(S) IC MC7808ACT 8V REG(LINEAR)1AMP TO-	R100		036-13470-00	RES M/F 0805 CHIP 470E 5%
IC404		002-00078-05	(S) IC MC7805ACT 5V REG(LINEAR)1AMP TO-	R101		036-14390-00	RES M/F 0805 CHIP 3K9 5%
L1		030-50000-00	LINK WIRE AI ZERO OHM 0.6MM WIRE	R102		036-13560-00	RES M/F 0805 CHIP 560E 5%
L101		052-56145-85	COIL A/W 8.5T/4.5MM HOR 0.56MM WIRE	R103		036-14220-00	RES M/F 0805 CHIP 2K2 5%
L104		050-00016-69	COIL RF TOKO MC-136 7.5T 7.5MM CAN FERRI	R104		036-12820-00	RES M/F 0805 CHIP 82E 5%
L105		050-00016-69	COIL RF TOKO MC-136 7.5T 7.5MM CAN FERRI	R105		036-12180-00	RES M/F 0805 CHIP 18E 5%
L106		050-00016-69	COIL RF TOKO MC-136 7.5T 7.5MM CAN FERRI	R106		036-16100-00	RES M/F 0805 CHIP 100K 5%
L107		050-00016-65	COIL BALUN 7.2MM2 5X0.5PINS 5T/4 456DB-1	R107		036-16100-00	RES M/F 0805 CHIP 100K 5%
L108		050-00016-65	COIL BALUN 7.2MM2 5X0.5PINS 5T/4 456DB-1	R108		036-16100-00	RES M/F 0805 CHIP 100K 5%
L109		056-10068-00	IND FXD SMD 68NH 3.2*2.5*1.6 SIEMENS SMI	R109		036-10000-00	RES M/F 0805 CHIP ZERO OHM
L114		050-00016-62	COIL IF 1UH AT 30MHZ 6MMSQX6.2MMH CAN 29	R110		036-17100-00	RES M/F 0805 CHIP 1M 5%
L116		050-00016-62	COIL IF 1UH AT 30MHZ 6MMSQX6.2MMH CAN 29	R111		036-17100-00	RES M/F 0805 CHIP 1M 5%
L119		050-00016-55	COIL TAIT NO 655 455KHZ QUAD COIL 7MM CA	R112		036-12180-00	RES M/F 0805 CHIP 18E 5%
L120		057-10005-03	IND 0805 BLM21B05 EMI SUPRSN 5 OHM AT 10	R113		036-11470-00	RES M/F 0805 CHIP 4E7 10%
L200		057-10005-03	IND 0805 BLM21B05 EMI SUPRSN 5 OHM AT 10	R114		036-13820-00	RES M/F 0805 CHIP 820E 5%
L205		056-00021-56	IND FXD 3.3UH AXIAL 10X4.2MM PHENOLIC	R115		036-15120-00	RES M/F 0805 CHIP 12K 5%
L206		055-01009-00	COIL TOROID 241NH 15P 21T T2200	R116		036-11470-00	RES M/F 0805 CHIP 4E7 10%
L207		056-00021-56	IND FXD 3.3UH AXIAL 10X4.2MM PHENOLIC	R117		036-12100-00	RES M/F 0805 CHIP 10E 5%
L208		052-56140-55	COIL A/W 5.5T/4.0MM HOR 0.56MM WIRE	R118		036-13100-00	RES M/F 0805 CHIP 100E 5%
L210		052-56140-85	COIL A/W 8.5T/4.0MM HOR 0.56MM WIRE	R119		036-12100-00	RES M/F 0805 CHIP 10E 5%
L300		030-50000-00	LINK WIRE AI ZERO OHM 0.6MM WIRE	R120		036-13820-00	RES M/F 0805 CHIP 820E 5%
L301		052-56130-55	COIL A/W 5.5T/3.0MM HOR 0.56MM WIRE	R121		036-13180-00	RES M/F 0805 CHIP 180E 5%
L302		052-56145-35	COIL A/W 3.5T/4.5MM HOR 0.56MM	R122		036-16100-00	RES M/F 0805 CHIP 100K 5%
L303		056-00021-00	IND FXD 3.3UH AXIAL	R123		036-16100-00	RES M/F 0805 CHIP 100K 5%
L304		052-56135-25	COIL A/W 2.5T/3.5MM HOR 0.56MM WIRE	R124		036-16100-00	RES M/F 0805 CHIP 100K 5%
L305		052-56130-85	COIL A/W 8.5T/3.0MM HOR 0.56MM WIRE	R125		036-15100-00	RES M/F 0805 CHIP 10K 5%
L306		057-10005-03	IND 0805 BLM21B05 EMI SUPRSN 5 OHM AT 10	R126		036-15100-00	RES M/F 0805 CHIP 10K 5%
L307		052-56125-35	COIL A/W 3.5T/2.5MM HOR 0.56MM WIRE	R127		036-15100-00	RES M/F 0805 CHIP 10K 5%
L308		030-50000-00	LINK WIRE AI ZERO OHM 0.6MM WIRE	R128		036-13150-00	RES M/F 0805 CHIP 150E 5%
L309		030-50000-00	LINK WIRE AI ZERO OHM 0.6MM WIRE	R129		036-12470-00	RES M/F 0805 CHIP 47E 5%
				R131		036-13270-00	RES M/F 0805 CHIP 270E 5%

Ref	Var	IPN	Description	Ref	Var	IPN	Description
R132		036-13150-00	RES M/F 0805 CHIP 150E 5%	R302		036-14100-00	RES M/F 0805 CHIP 1K 5%
R134		036-12100-00	RES M/F 0805 CHIP 10E 5%	R303		036-14100-00	RES M/F 0805 CHIP 1K 5%
R136		036-11470-00	RES M/F 0805 CHIP 4E7 10%	R304		036-12470-00	RES M/F 0805 CHIP 47E 5%
R137		036-11470-00	RES M/F 0805 CHIP 4E7 10%	R305		036-12100-00	RES M/F 0805 CHIP 10E 5%
R138		036-16100-00	RES M/F 0805 CHIP 100K 5%	R306		036-12100-00	RES M/F 0805 CHIP 10E 5%
R140		036-15680-00	RES M/F 0805 CHIP 68K 5%	R307		030-53470-20	RES FILM AI 470E 5% 0.4W 4X1.6MM
R140A		036-15330-00	RES M/F 0805 CHIP 33K 5%	R308		036-12100-00	RES M/F 0805 CHIP 10E 5%
R141		036-14150-00	RES M/F 0805 CHIP 1K5 5%	R308A		036-12100-00	RES M/F 0805 CHIP 10E 5%
R142		036-15270-00	RES M/F 0805 CHIP 27K 5%	R309		036-12100-00	RES M/F 0805 CHIP 10E 5%
R142A		036-16100-00	RES M/F 0805 CHIP 100K 5%	R310		036-12100-00	RES M/F 0805 CHIP 10E 5%
R143		036-15330-00	RES M/F 0805 CHIP 33K 5%	R311		036-13820-00	RES M/F 0805 CHIP 820E 5%
R143A		036-15330-00	RES M/F 0805 CHIP 33K 5%	R312		036-13680-00	RES M/F 0805 CHIP 680E 5%
R144		036-15680-00	RES M/F 0805 CHIP 68K 5%	R313		030-03180-00	RES FILM 180E 5% 0.25W 7X2.5MM
R144A		036-16120-00	RES M/F 0805 CHIP 120K 5%	R314		036-12100-00	RES M/F 0805 CHIP 10E 5%
R145		036-14150-00	RES M/F 0805 CHIP 1K5 5%	R315		036-12180-00	RES M/F 0805 CHIP 18E 5%
R145A		036-15330-00	RES M/F 0805 CHIP 33K 5%	R316		032-32220-00	RES M/F PWR 22E 5% 1W 12X4.5MM
R146		036-12220-00	RES M/F 0805 CHIP 22E 5%	R317		030-01100-00	RES FILM 1E 5% 0.25W 7X2.5MM
R147		036-13220-00	RES M/F 0805 CHIP 220E 5%	R317A		030-01100-00	RES FILM 1E 5% 0.25W 7X2.5MM
R148		036-13560-00	RES M/F 0805 CHIP 560E 5%	R317B		030-01100-00	RES FILM 1E 5% 0.25W 7X2.5MM
R150		036-16100-00	RES M/F 0805 CHIP 100K 5%	R317C		030-01100-00	RES FILM 1E 5% 0.25W 7X2.5MM
*R151		036-14330-00	RES M/F 0805 CHIP 3K3 5%	R318		032-33180-00	RES M/F PWR 180E 5% 1W 12X4.5MM
*R152		036-16390-00	RES M/F 0805 CHIP 390K 5%	R319		032-33120-00	RES M/F PWR 120E 5% 12*4 2W
R153		036-14100-00	RES M/F 0805 CHIP 1K 5%	R320		030-55150-20	RES FILM AI 15K 5% 0.4W 4X1.6MM
RV153		042-05470-07	RES PRESET 47K CARBON 6MM FLAT DUAL ADJ	R321		030-53390-20	RES FILM AI 390E 5% 0.4W 4X1.6MM
R155		036-16100-00	RES M/F 0805 CHIP 100K 5%	R321A		030-53390-20	RES FILM AI 390E 5% 0.4W 4X1.6MM
R156		036-13100-00	RES M/F 0805 CHIP 100E 5%	R322		036-12100-00	RES M/F 0805 CHIP 10E 5%
R157		036-15100-00	RES M/F 0805 CHIP 10K 5%	R323		030-52100-20	RES FILM AI 10E 5% 0.4W 4X1.6MM
R158		036-14100-00	RES M/F 0805 CHIP 1K 5%	RV324		042-06470-06	RES PRESET 470/500K 25% 6MM ROUND TOP A
R159		036-12470-00	RES M/F 0805 CHIP 47E 5%	R325		030-02100-00	RES FILM 10E 5% 0.25W 7X2.5MM
R160		036-12100-00	RES M/F 0805 CHIP 10E 5%	R326		036-16220-00	RES M/F 0805 CHIP 220K 5%
R161		036-14100-00	RES M/F 0805 CHIP 1K 5%	R327		036-14100-00	RES M/F 0805 CHIP 1K 5%
*R162		036-10000-00	RES M/F 0805 CHIP ZERO OHM	R328		030-53150-20	RES FILM AI 150E 5% 0.4W 4X1.6MM
*R163		036-10000-00	RES M/F 0805 CHIP ZERO OHM	R329		036-15470-00	RES M/F 0805 CHIP 47K 5%
*R194		036-10000-00	RES M/F 0805 CHIP ZERO OHM	R330		036-16220-00	RES M/F 0805 CHIP 220K 5%
R195		036-15680-00	RES M/F 0805 CHIP 68K 5%	R332		036-13100-00	RES M/F 0805 CHIP 100E 5%
R196		036-13100-00	RES M/F 0805 CHIP 100E 5%	R333		036-14220-00	RES M/F 0805 CHIP 2K2 5%
R197		036-13100-00	RES M/F 0805 CHIP 100E 5%	R334		036-15560-00	RES M/F 0805 CHIP 56K 5%
R198		036-14220-00	RES M/F 0805 CHIP 2K2 5%	R335		036-15100-00	RES M/F 0805 CHIP 10K 5%
R199		036-13100-00	RES M/F 0805 CHIP 100E 5%	R336		036-13220-00	RES M/F 0805 CHIP 220E 5%
R213		036-14390-00	RES M/F 0805 CHIP 3K9 5%	R337		036-10000-00	RES M/F 0805 CHIP ZERO OHM
R214		036-14180-00	RES M/F 0805 CHIP 1K8 5%	R338		036-13680-00	RES M/F 0805 CHIP 680E 5%
R215		036-14390-00	RES M/F 0805 CHIP 3K9 5%	R339		036-16270-00	RES M/F 0805 CHIP 270K 5%
R216		036-12470-00	RES M/F 0805 CHIP 47E 5%	R340		036-16220-00	RES M/F 0805 CHIP 220K 5%
R217		036-12470-00	RES M/F 0805 CHIP 47E 5%	R341		036-13220-00	RES M/F 0805 CHIP 220E 5%
RV222		042-05470-07	RES PRESET 47K CARBON 6MM FLAT DUAL ADJ	R342		036-14180-00	RES M/F 0805 CHIP 1K8 5%
R223		036-15220-00	RES M/F 0805 CHIP 22K 5%	R350		030-02100-00	RES FILM 10E 5% 0.25W 7X2.5MM
R224		036-14820-00	RES M/F 0805 CHIP 8K2 5%	R418		036-13680-00	RES M/F 0805 CHIP 680E 5%
R225		036-15220-00	RES M/F 0805 CHIP 22K 5%	R420		036-15390-00	RES M/F 0805 CHIP 39K 5%
R226		036-14820-00	RES M/F 0805 CHIP 8K2 5%	R420A		036-14330-00	RES M/F 0805 CHIP 3K3 5%
R227		036-14820-00	RES M/F 0805 CHIP 8K2 5%	R421		036-15390-00	RES M/F 0805 CHIP 39K 5%
R228		036-14330-00	RES M/F 0805 CHIP 3K3 5%	R421A		036-14330-00	RES M/F 0805 CHIP 3K3 5%
R229		036-12220-00	RES M/F 0805 CHIP 22E 5%	R422		036-12220-00	RES M/F 0805 CHIP 22E 5%
R230		036-13390-00	RES M/F 0805 CHIP 390E 5%	R425		036-14100-00	RES M/F 0805 CHIP 1K 5%
R231		036-13180-00	RES M/F 0805 CHIP 180E 5%	R426		036-11470-00	RES M/F 0805 CHIP 4E7 10%
R232		036-14220-00	RES M/F 0805 CHIP 2K2 5%	R427		036-11470-00	RES M/F 0805 CHIP 4E7 10%
R233		036-13680-00	RES M/F 0805 CHIP 680E 5%	R428		036-12220-00	RES M/F 0805 CHIP 22E 5%
R234		036-13270-00	RES M/F 0805 CHIP 270E 5%	R429		036-15270-00	RES M/F 0805 CHIP 27K 5%
R235		036-13330-00	RES M/F 0805 CHIP 330E 5%	R430		036-14680-00	RES M/F 0805 CHIP 6K8 5%
R236		036-12470-00	RES M/F 0805 CHIP 47E 5%	R431		036-16100-00	RES M/F 0805 CHIP 100K 5%
R237		036-13100-00	RES M/F 0805 CHIP 100E 5%	R432		036-12100-00	RES M/F 0805 CHIP 10E 5%
R238		036-14820-00	RES M/F 0805 CHIP 8K2 5%	R433		036-13100-00	RES M/F 0805 CHIP 100E 5%
R239		036-15220-00	RES M/F 0805 CHIP 22K 5%	R434		036-12470-00	RES M/F 0805 CHIP 47E 5%
R240		036-16100-00	RES M/F 0805 CHIP 100K 5%	R437		036-14100-00	RES M/F 0805 CHIP 1K 5%
R241		036-14180-00	RES M/F 0805 CHIP 1K8 5%				
R242		036-12220-00	RES M/F 0805 CHIP 22E 5%				
R243		036-14220-00	RES M/F 0805 CHIP 2K2 5%				
R244		036-12220-00	RES M/F 0805 CHIP 22E 5%				
R245		036-12220-00	RES M/F 0805 CHIP 22E 5%				
R246		036-13100-00	RES M/F 0805 CHIP 100E 5%				
R247		036-12470-00	RES M/F 0805 CHIP 47E 5%				
R248		036-16100-00	RES M/F 0805 CHIP 100K 5%				
R249		036-12100-00	RES M/F 0805 CHIP 10E 5%				
R250		036-14220-00	RES M/F 0805 CHIP 2K2 5%				
R251		036-13150-00	RES M/F 0805 CHIP 150E 5%				
R252		036-14120-00	RES M/F 0805 CHIP 1K2 5%				
R253		036-13680-00	RES M/F 0805 CHIP 680E 5%				
R254		036-12220-00	RES M/F 0805 CHIP 22E 5%				
R255		036-12100-00	RES M/F 0805 CHIP 10E 5%				
R256		036-14180-00	RES M/F 0805 CHIP 1K8 5%				
R257		036-12100-00	RES M/F 0805 CHIP 10E 5%				
R259		036-13270-00	RES M/F 0805 CHIP 270E 5%				
R260		036-12270-00	RES M/F 0805 CHIP 27E 5%				
R261		036-12100-00	RES M/F 0805 CHIP 10E 5%				
R269		036-12100-00	RES M/F 0805 CHIP 10E 5%				
R270		036-12100-00	RES M/F 0805 CHIP 10E 5%				
R271		036-13180-00	RES M/F 0805 CHIP 180E 5%				
R272		036-13180-00	RES M/F 0805 CHIP 180E 5%				
R273		036-12100-00	RES M/F 0805 CHIP 10E 5%				
R274		036-14390-00	RES M/F 0805 CHIP 3K9 5%				
R275		036-12100-00	RES M/F 0805 CHIP 10E 5%				
R278		036-16100-00	RES M/F 0805 CHIP 100K 5%				
R284		036-15100-00	RES M/F 0805 CHIP 10K 5%				
R285		036-15390-00	RES M/F 0805 CHIP 39K 5%				
R286		036-15150-00	RES M/F 0805 CHIP 15K 5%				
R287		036-15820-00	RES M/F 0805 CHIP 82K 5%				
R288		036-16120-00	RES M/F 0805 CHIP 120K 5%				
R300		030-52680-20	RES FILM AI 68E 5% 0.4W 4X1.6MM				
R301		036-13330-00	RES M/F 0805 CHIP 330E 5%				

## T2000-200 Mechanical & Miscellaneous Parts

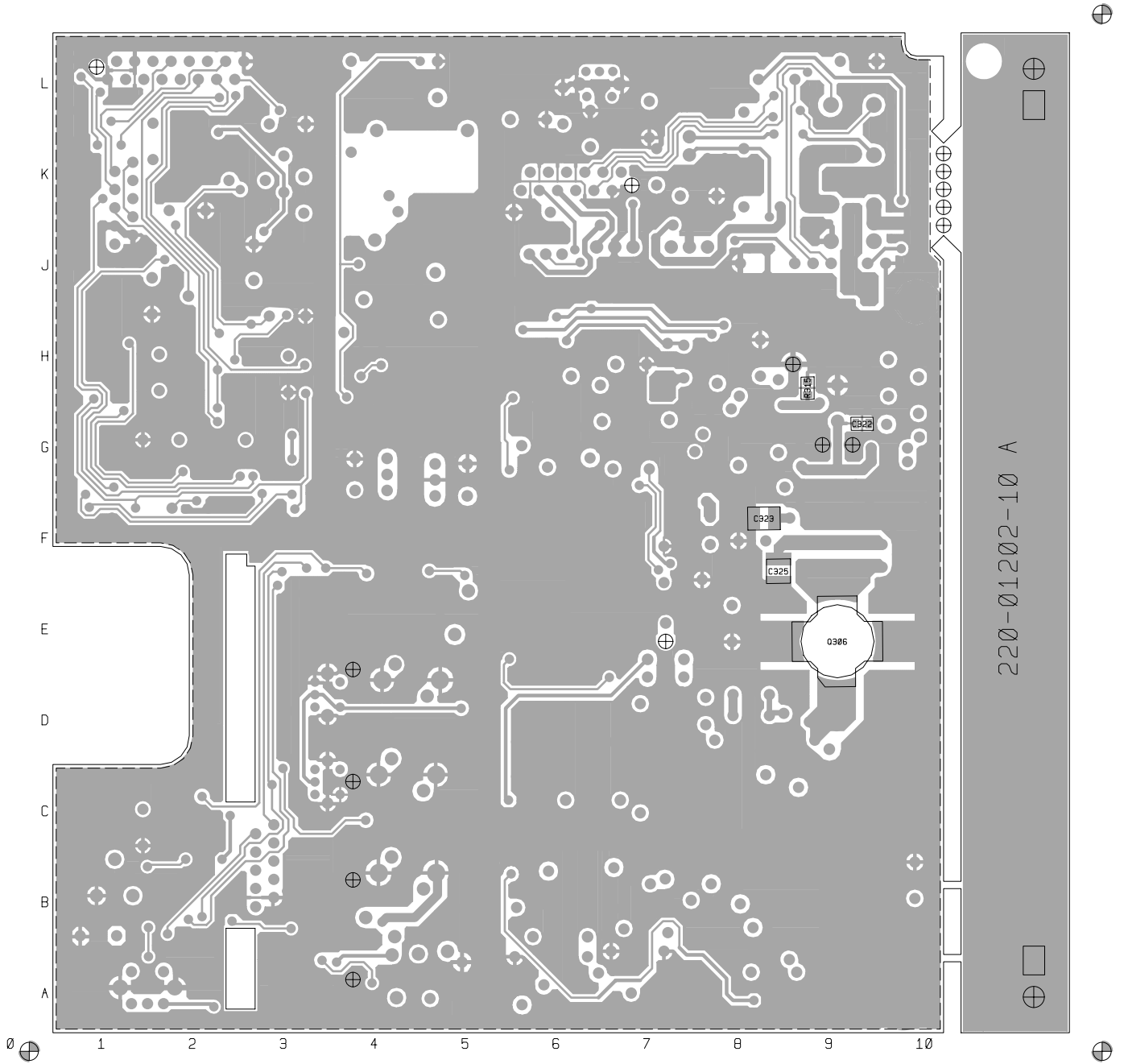
IPN	Description	IPN	Description
065-00010-11	BEAD FERRITE 4S3 3*1*4MM RED L1, L300, L300A, L308, L308A, L309, L309A		
200-00010-05	WIRE T/C 0.5MM L315A, L317A, L324A		
205-00010-12	CABLE FLAT RBBN 16 CORE 16/7/0.1 GREY		
220-01202-10	PCB T2200 RF 66-88MHZ C732		
240-00020-54	PLUG 16 WAY 2X8 FLAT CABLE TERMN MICROMATCH		
240-02100-11	SKT COAX BNC 3.5MM PNL NO EARTH TAG		
303-23135-01	COVER BTTM A1M2505 T2000 PNTD CMPLT		
303-50070-00	CLIP A4M2648 XSTR MTG T2000PA/T555'S		
303-50076-00	CLIP A4M2524 HSINK T2000 RF PRE-DRIVER TO-39		
303-50077-00	CLIP A3M2525 T2000 AUDIO IC AND REG		
308-13103-01	CHASSIS A1M2503 D-CAST T2000 PNTD CMPLT		
316-85094-00	PLATE A4M2160 BNC MTG UK 5X5 SERIES		
319-01164-01	SHIELD A1M2507 DIE CAST T2000 MICROP		
319-01167-00	SHIELD RX A3M2594 T2000		
349-00020-30	SCREW TAPTITE M3X6MM PAN POZI BZ		
349-00020-31	SCREW TAPTITE M3X10MM PAN POZI BZ		
349-00020-32	SCREW TAPTITE M3X8MM PAN POZI BZ		
349-00020-34	SCREW M3*12 PAN POZI TAPTITE BZ		
349-00020-48	SCREW M4X25MM PAN POZI TAPTITE II BRIGHT ZINC		
349-00020-49	SCREW TAPTITE M4X35MM PAN POZI BZ		
352-00010-35	NUT 8-32 UNC HEX RF PWR XSTR MTG NUT FOR Q306		
360-01053-01	PLUG A3M2563 PLASTIC D-RANGE BLANKING		
362-01027-01	GASKET A4M2564 RUBBER SEAL T2000 MAIN CONN		
362-01028-00	GASKET A4M2652 130X3MM CONDUCT STRIPS T2000		
362-01058-00	GASKET TO-126 11.1X7.9 D2.4 SIL INSULATION		



## T2000-200 Grid Reference Index (IPN 220-01202-10)

Device	PCB	Circuit	Device	PCB	Circuit	Device	PCB	Circuit	Device	PCB	Circuit
1	1:J9	1-V9	C198	1:C1	1-M6	C340	1:B7	1-U0			1-J4
C2	1:K9	1-V8	C199	1:C2	1-M7	C341	1:B8	1-U0	IC203	1:G3	1-E2
C3	1:L10	1-V8	C200	1:F2	1-B5	C342	1:B6	1-T0	IC204	1:G2	3
C100	1:A3	1-U3	C201	1:F2	1-D7	C343	1:A7	1-T0			1-D7
C101	1:A5	1-T1	C202	1:G2	1-D6	C344	1:B8	1-V0			1-H9
C102	1:A5	1-S2	C203	1:F2	1-E7	C345	1:A9	1-U1	IC402	1:J9	1-T8
C103	1:B4	1-U3	C205	1:G3	1-B2	C346	1:A9	1-V1	IC403	1:J7	1-K9
C104	1:A4	1-T3	C206	1:H3	1-H5	C347	1:A6	1-S1	IC404	1:J8	1-K8
C105	1:B4	1-S3	C207	1:J2	1-B7	C348	1:J6	1-V2			
C106	1:B4	1-S3	C213	1:H3	1-D4	C349	1:J6	1-V2	L1	1:K9	1-U9
C107	1:B5	1-Q2	C214	1:H3	1-C4	C350	1:D9	1-Q0	L101	1:A5	1-T1
C108	1:C5	1-P3	C215	1:J3	1-E4	C353	1:K6	1-V2	L104	1:B4	1-Q3
C109	1:B5	1-Q2	C216	1:J2	1-E5	C354	1:K6	1-U2	L105	1:C4	1-P3
C110	1:C5	1-P2	C217	1:K3	1-F4	C356	1:H7	1-K1	L106	1:D4	1-O3
C111	1:D5	1-O3	C218	1:H3	1-F5	C357	1:H7	1-L1	L107	1:G4	1-J3
C112	1:C5	1-P2	C219	1:K2	1-G4	C360	1:K6	1-I1	L108	1:G5	1-L3
C113	1:D5	1-O2	C220	1:K3	1-G5	C403	1:J9	1-S8	L109	1:G4	1-I3
C114	1:E5	1-N3	C221	1:K2	1-G5	C410	1:L9	1-S9	L114	1:D4	1-P5
C115	1:D5	1-N2	C222	1:K3	1-H3	C411	1:J8	1-T8	L116	1:C4	1-Q5
C116	1:F2	1-N3	C223	1:G3	1-E3	C412	1:L8	1-T9	L119	1:A2	1-K8
*C120	1:H2	1-F8	C224	1:G3	1-E2	C413	1:L8	1-U8	L120	1:F3	1-L4
C121	1:E5	1-N2	C225	1:J3	1-H3	C414	1:K8	1-U9	L200	1:G4	1-B2
C122	1:B4	1-R3	C226	1:K4	1-C1	C415	1:K8	1-U9	L205	1:K5	1-A1
C123	1:D4	1-J3	C227	1:K4	1-C0	C416	1:J9	1-U8	L206	1:K4	1-B0
C124	1:G4	1-I2	C228	1:L4	1-D1	C419	1:J7	1-K8	L207	1:K4	1-C1
C125	1:G4	1-I3	C229	1:L5	1-C1	C420	1:J8	1-L8	L208	1:H4	1-E2
C126	1:G4	1-H2	C230	1:J4	1-D0	C423	1:K8	1-L9	L210	1:H5	1-E1
C127	1:L2	1-J4	C231	1:J5	1-D0	C424	1:K7	1-M9	L300	1:H7	1-I0
C128	1:E4	1-K4	C232	1:J5	1-E0	C425	1:K6	1-O8	L301	1:G6	1-G0
C129	1:E4	1-M5	C234	1:K2	1-J3	C426	1:L6	1-P9	L302	1:G7	1-H0
C130	1:E4	1-M5	C239	1:H4	1-B2	C427	1:L6	1-Q8	L303	1:H7	1-J1
C134	1:D3	1-O6	C240	1:H5	1-F0	C428	1:L6	1-R8	L304	1:H7	1-H0
C135	1:D4	1-P5	C241	1:H4	1-G3	C429	1:J6	1-Q8	L305	1:G8	1-J0
C136	1:D3	1-P6	C243	1:G4	1-E2	C430	1:L7	1-N9	L306	1:J6	1-J1
C137	1:D4	1-Q5	C245	1:G4	1-E2	C451	1:K10	1-V8	L307	1:H8	1-K0
C138	1:B4	1-Q5	C246	1:J4	1-D2	C455	1:K10	1-V8	L308	1:H8	1-L0
C140	1:C3	1-T5	C248	1:J4	1-D2				L309	1:G10	1-M1
C141	1:C3	1-S6	C257	1:K2	1-F4	D1	1:K9	1-V9	L310	1:G10	1-M1
C142	1:G1	1-H6	C300	1:E8	1-N1	D101	1:C4	1-Q3	L311	1:G9	1-N0
C145	1:E6	1-T4	C301	1:G5	1-F0	D101A	1:C4	1-Q3	L312	1:J7	1-J2
C146	1:D6	1-U4	C302	1:G6	1-G0	D102	1:D4	1-P3	L313	1:G8	1-K0
C147	1:E5	1-N5	C303	1:H6	1-J1	D102A	1:D4	1-P3	L314	1:G8	1-N1
C148	1:F6	1-O4	C304	1:G7	1-G1	D103	1:E4	1-N3	L315	1:F8	1-N1
C149	1:F4	1-L4	C305	1:G6	1-H0	D103A	1:E4	1-N3	L316	1:C8	1-R1
C150	1:F6	1-O4	C306	1:H6	1-H0	D110	1:G4	1-K3	L317	1:F8	1-P0
C151	1:F7	1-O5	C307	1:G7	1-H1			1-K3	L318	1:D9	1-Q1
C152	1:F6	1-Q4	C308	1:G8	1-M0	D111	1:G4	1-K3	L319	1:C7	1-S1
C152A	1:F6	1-P4	C309	1:G7	1-J0			1-K2	L320	1:A7	1-T0
C153	1:F7	1-Q4	C310	1:H8	1-K1	D140A	1:F6	1-Q4	L321	1:B6	1-T1
C153A	1:F7	1-R4	C311	1:G8	1-K0	D200	1:K2	1-H4	L322	1:B7	1-U1
C154	1:E7	1-S4	C312	1:H8	1-K0			1-H4	L323	1:B8	1-U1
C155	1:E6	1-T4	C313	1:G10	1-M1	D202	1:F3	1-C5	L324	1:D8	1-P1
C156	1:E6	1-T4	C315	1:J6	1-J1	D203	1:K5	1-A0	L325	1:F9	1-N0
C157	1:E6	1-U5	C316	1:J9	1-N2	D204	1:K5	1-B0	L326	1:B8	1-V1
C158	1:F3	1-K4	C317	1:J10	1-N2	D205	1:K5	1-A0	L327	1:D9	1-Q1
C174	1:B1	1-J8	C318	1:H10	1-N2	D206	1:K5	1-B0	L328	1:B8	1-U1
C175	1:A2	1-J8	C319	1:D8	1-O1	D208	1:H5	1-E0	L329	1:A6	1-S1
C176	1:A1	1-K8	C320	1:F8	1-N0	D209	1:H5	1-E1	L330	1:A7	1-U0
C179	1:B2	1-M7	C321	1:H10	1-M2	D301	1:A8	1-V1	L331	1:J6	1-T2
C180	1:A2	1-L8	C322	2:G9	1-M0	D303	1:C7	1-S1	L332	1:A7	1-U0
C181	1:A2	1-L8	C323	2:F8	1-N0	D304	1:B6	1-T0	L401	1:L7	1-O9
C185	1:F3	1-I6	C325	2:F8	1-O0	D305	1:A6	1-S0			
C186	1:F3	1-J6	C326	1:P1	1-P1	D401	1:L6	1-P9	P1	1:L1	
C187	1:E3	1-M8	C327	1:D7	1-Q1			1-P9	PAD-1	1:G3	1-G6
C188	1:F3	1-A6	C328	1:D7	1-O1				P2	1:K7	
*C189	1:B2	1-K6	C329	1:C9	1-Q0	H/SINK	1:G9		P3	1:L10	
*C190	1:B2	1-K7	C330	1:D9	1-R0				P5	1:B3	
C191	1:C1	1-M6	C333	1:C8	1-S1	IC101	1:B2	1-K6	P6	1:J1	
C192	1:C1	1-M7	C334	1:C8	1-R0			1-L7	P7	1:K8	
C193	1:C1	1-N7	C336	1:B6	1-T1			1-O6			
C194	1:F3	1-A7	C337	1:D7	1-R1	IC201	1:H2	1-B4	Q100	1:F6	1-O4
C195	1:F3	1-A7	C338	1:B6	1-S1	IC202	1:K2		Q101	1:B5	1-R3
C197	1:C2	1-O7	C339	1:B6	1-T0			1-G4	Q102	1:A4	1-S3

Device	PCB	Circuit	Device	PCB	Circuit	Device	PCB	Circuit	Device	PCB	Circuit
Q103	1:E4	1-N5	R140A	1:E6	1-O4	R252	1:J5	1-D0	R425	1:L9	1-T9
Q104	1:C4	1-S5	R141	1:F6	1-O4	R253	1:J5	1-D0	R426	1:L8	1-T8
Q105	1:F6	1-P4	R142	1:F7	1-R4	R254	1:J4	1-D2	R427	1:L8	1-U8
Q106	1:F7	1-Q4	R142A	1:F7	1-P4	R255	1:J4	1-D2	R428	1:K7	1-L9
Q107	1:F7	1-R4	R143	1:E7	1-S4	R256	1:J4	1-D1	R429	1:K6	1-N8
Q108	1:E7	1-S4	R143A	1:E7	1-R4	R257	1:J5	1-E0	R430	1:L6	1-O9
Q109	1:D6	1-T4	R144	1:F7	1-R4	R259	1:K4	1-C0	R431	1:K6	1-O8
Q115	1:C1	1-N6	R144A	1:F7	1-R4	R260	1:J4	1-E2	R432	1:L6	1-Q9
*Q116	1:A3	1-O7	R145	1:F7	1-R4	R261	1:J4	1-D2	R433	1:K6	1-Q8
*Q117	1:G1	1-H7	R145A	1:E6	1-S4	R269	1:H4	1-F1	R434	1:J6	1-R9
*Q118	1:G2	1-I7	R146	1:F6	1-S5	R270	1:H5	1-F0	R437	1:L9	1-V6
*Q119	1:H1	1-G7	R147	1:E6	1-S5	R271	1:H5	1-F0			
Q203	1:H2	1-C5	R148	1:E6	1-S4	R272	1:H5	1-F1	SHIELD	1:E4	
Q204	1:H2	1-C5	R149	1:D6	1-T4	R273	1:H4	1-F2	S4	1:B10	1-W1
Q205	1:J3	1-D4	R150	1:E6	1-T4	R274	1:H5	1-F1			
Q206	1:J3	1-D5	*R151	1:B2	1-K7	R275	1:H5	1-F0	TSP7	1:E7	1-S4
Q207	1:J2	1-E5	*R152	1:B2	1-K6	R278	1:L3	1-I4			
Q208	1:J2	1-E5	RV153	1:B1	1-L6	R284	1:F2	1-J4			
Q209	1:H3	1-E4	R153	1:F6	1-O4	R285	1:L2	1-I4			
Q210	1:K2	1-F4	*R154	1:G1	1-H7	R286	1:L1	1-I3			
Q212	1:K4	1-C0	R155	1:C1	1-M7	R287	1:L2	1-I4			
Q213	1:L4	1-C1	R156	1:C2	1-N8	R288	1:L2	1-J4			
Q214	1:J5	1-E0	R157	1:C1	1-N7	R300	1:G7	1-H1			
Q215	1:J5	1-E0	R158	1:C1	1-N7	R301	1:G6	1-G0			
Q301	1:G6	1-H0	R159	1:C2	1-P8	R302	1:G6	1-G0			
Q302	1:H7	1-I0	R160	1:A1	1-L8	R303	1:G6	1-H0			
Q303	1:J6	1-I1	R161	1:C1	1-L6	R304	1:H7	1-I0			
Q304	1:J6	1-J1	*R162	1:A3	1-O8	R305	1:G7	1-H1			
Q305	1:G9	1-M0	*R163	1:A3	1-O8	R306	1:H6	1-J0			
Q306	2:E9	1-Q0	*R164	1:B3	1-P7	R307	1:H7	1-J1			
Q307	1:H7	1-K1	*R165	1:F3	1-O6	R308	1:G8	1-L0			
Q308	1:H8	1-L1	*R166	1:G1	1-H7	R308A	1:G8	1-L0			
Q309	1:H7	1-L1	*R167	1:G2	1-H7	R309	1:G8	1-L0			
Q401	1:L7	1-N9	*R168	1:G1	1-I8	R310	1:H8	1-L0			
Q402	1:L6	1-P9	*R170	1:G3	1-H6	R311	1:J6	1-I1			
			*R194	1:C3	1-P6	R312	1:J6	1-J1			
R100	1:B4	1-S3	R195	1:L1	1-A8	R313	1:G8	1-M0			
R101	1:A4	1-T3	R196	1:F3	1-J7	R314	1:G10	1-M1			
R102	1:A3	1-T3	R197	1:F3	1-I7	R315	2:H9	1-M0			
R103	1:A4	1-S3	R198	1:C2	1-M7	R316	1:E9	1-P0			
R104	1:B4	1-R3	R199	1:F3	1-J8	R317	1:F9	1-O1			
R105	1:A4	1-T3	R213	1:H1	1-C8	R317A	1:F10	1-O1			
R106	1:C4	1-Q3	R214	1:G2	1-D7	R317B	1:F9	1-O0			
R107	1:C5	1-P3	R215	1:F2	1-D7	R317C	1:F9	1-O0			
R108	1:D4	1-P3	R216	1:F2	1-E7	R318	1:D9	1-P1			
R109	1:E5	1-M3	R217	1:H4	1-H5	R319		1-P1			
R110	1:F5	1-M2	RV222	1:J2	1-C6	R320	1:B10	1-W0			
R111	1:E5	1-M2	R223	1:H2	1-B5	R321	1:G10	1-M1			
R112	1:B4	1-R3	R224	1:H2	1-C6	R321A	1:G10	1-M1			
R113	1:E4	1-M5	R225	1:G2	1-B5	R322	1:D8	1-O1			
R114	1:E4	1-L5	R226	1:J1	1-C6	R323	1:H10	1-M1			
R115	1:E4	1-M5	R227	1:J1	1-D6	RV324	1:E7	1-U2			
R116	1:E4	1-N5	R228	1:G3	1-C5	R325	1:D8	1-P1			
R117	1:F4	1-M6	R229	1:H3	1-D4	R326	1:D7	1-U2			
R118	1:E4	1-M6	R230	1:J3	1-D4	R327	1:J6	1-V2			
R119	1:E3	1-O6	R231	1:J3	1-D5	R328	1:D7	1-S1			
R120	1:F6	1-N4	R232	1:J3	1-D5	R329	1:A9	1-U1			
R121	1:F6	1-N4	R233	1:J2	1-E4	R330	1:A8	1-U1			
R122	1:D5	1-O3	R234	1:H2	1-E5	R332	1:A10	1-W1			
R123	1:E5	1-N3	R235	1:J2	1-F5	R333	1:J6	1-J2			
R124	1:E4	1-O3	R236	1:K3	1-F5	R334	1:H6	1-K1			
R125	1:B4	1-Q5	R237	1:L3	1-F5	R335	1:H8	1-K2			
R126	1:B4	1-Q5	R238	1:K3	1-F4	R336	1:H8	1-K1			
R127	1:C3	1-S5	R239	1:K2	1-F4	R337	1:E7	1-U2			
R128	1:B3	1-T5	R240	1:K2	1-G4	R338	1:H7	1-K1			
R129	1:B3	1-T6	R241	1:J3	1-G5	R339	1:H7	1-L1			
R131	1:E6	1-U4	R242	1:J3	1-H4	R340	1:A8	1-T1			
R132	1:B3	1-U5	R243	1:J3	1-H3	R341	1:A8	1-U1			
*R133	1:H1	1-F8	R244	1:K3	1-I3	R342	1:H6	1-K2			
R134	1:B3	1-U3	R245	1:H3	1-E3	R350	1:D8	1-P1			
*R135	1:G2	1-H8	R246	1:G3	1-E2	R418	1:J2	1-E6			
R136	1:B5	1-R2	R247	1:K4	1-A1	R420	1:J3	1-H4			
R137	1:B5	1-R2	R248	1:L3	1-H4	R420A	1:J3	1-H4			
R138	1:C2	1-N6	R249	1:L4	1-C1	R421	1:K3	1-I4			
*R139	1:H1	1-G7	R250	1:L4	1-C2	R421A	1:K3	1-I3			
R140	1:F6	1-O4	R251	1:J4	1-E1	R422	1:K7	1-M9			



T2000-200 RF PCB (IPN 220-01202-10) - Bottom Side

