

# 7.7 T2000-800 RF PCB

## T2000-800 Parts List (IPN 220-01305-03)

### Parts List Amendments

R258: Changed from 10Ω to 0Ω (IPN 036-10000-00) to improve power output (6/05/97)

Mechanical parts corrections: Delete IPN 362-00010-08 (insulating gasket)

Add IPN 240-02100-11 (BNC socket)

Add IPN 353-00020-12 (0.9mm flat washer)

Ref	Var	IPN	Description	Ref	Var	IPN	Description
C1		015-22330-01	CAP CER 0805 CHIP 33P 5% NPO 50V	C213		020-58470-05	CAP ELECT AI RDL 47M 16V 6.3X7MM
C2		015-22330-01	CAP CER 0805 CHIP 33P 5% NPO 50V	C214		015-22330-01	CAP CER 0805 CHIP 33P 5% NPO 50V
C3		015-22330-01	CAP CER 0805 CHIP 33P 5% NPO 50V	C215		020-57470-10	CAP ELECT AI RDL 4U7 50V LO ESR
C100		015-25100-08	CAP CER 0805 CHIP 10N 10% X7R 50V	C216		015-25100-08	CAP CER 0805 CHIP 10N 10% X7R 50V
C104		015-06100-08	CAP CER 1206 CHIP 100N 10% X7R 50V	C217		020-58470-05	CAP ELECT AI RDL 47M 16V 6.3X7MM
C106		015-22330-01	CAP CER 0805 CHIP 33P 5% NPO 50V	C218		020-57470-10	CAP ELECT AI RDL 4U7 50V LO ESR
C107		015-22330-01	CAP CER 0805 CHIP 33P 5% NPO 50V	C219		020-57470-10	CAP ELECT AI RDL 4U7 50V LO ESR
C108		015-22330-01	CAP CER 0805 CHIP 33P 5% NPO 50V	C220		022-55100-10	CAP MYLAR AI 10N 5% 63V POTTED
C109		015-22330-01	CAP CER 0805 CHIP 33P 5% NPO 50V	C221		022-57100-02	CAP MYLAR AI 1M 20% 50V POTTED
C110		015-22330-01	CAP CER 0805 CHIP 33P 5% NPO 50V	C222		022-06100-15	CAP MET POLYSTR 100N 5% 50V 5.6MM HI
C124		015-21330-01	CAP CER 0805 CHIP 3P3 +/-0.25P NPO 50V	C223		015-22330-01	CAP CER 0805 CHIP 33P 5% NPO 50V
C125		015-21180-01	CAP CER 0805 CHIP 1P8 +/-0.25 NPO 50V	C224		015-22330-01	CAP CER 0805 CHIP 33P 5% NPO 50V
C126		015-21330-01	CAP CER 0805 CHIP 3P3 +/-0.25P NPO 50V	C225		015-22330-01	CAP CER 0805 CHIP 33P 5% NPO 50V
C127		015-21680-01	CAP CER 0805 CHIP 6P8 +/-0.25P NPO 50V	C226		015-06100-08	CAP CER 1206 CHIP 100N 10% X7R 50V
C128		015-22220-01	CAP CER 0805 CHIP 22P 5% NPO 50V	C227		015-21560-01	CAP CER 0805 CHIP 5P6 +/-0.25P NPO 50V
C129		015-25100-08	CAP CER 0805 CHIP 10N 10% X7R 50V	C229		020-58470-05	CAP ELECT AI RDL 47M 16V 6.3X7MM
C130		015-25100-08	CAP CER 0805 CHIP 10N 10% X7R 50V	C230		015-22220-01	CAP CER 0805 CHIP 22P 5% NPO 50V
C133		015-22330-01	CAP CER 0805 CHIP 33P 5% NPO 50V	C231		015-25100-08	CAP CER 0805 CHIP 10N 10% X7R 50V
C134		015-21560-01	CAP CER 0805 CHIP 5P6 +/-0.25P NPO 50V	C232		015-21120-01	CAP CER 0805 CHIP 1P2 +/-0.25 NPO 50V
C135		015-22150-01	CAP CER 0805 CHIP 15P 5% NPO 50V	C233		020-57470-10	CAP ELECT AI RDL 4U7 50V LO ESR
C136		015-21680-01	CAP CER 0805 CHIP 6P8 +/-0.25P NPO 50V	C235		015-06100-08	CAP CER 1206 CHIP 100N 10% X7R 50V
C137		015-23120-01	CAP CER 0805 CHIP 120P 5% NPO 50V	C236		015-21330-01	CAP CER 0805 CHIP 3P3 +/-0.25P NPO 50V
C138		015-21680-01	CAP CER 0805 CHIP 6P8 +/-0.25P NPO 50V	C237		015-21330-01	CAP CER 0805 CHIP 3P3 +/-0.25P NPO 50V
C139		015-22150-01	CAP CER 0805 CHIP 15P 5% NPO 50V	C238		015-21390-01	CAP CER 0805 CHIP 3P9 +/-0.25P NPO 50V
C140		015-21560-01	CAP CER 0805 CHIP 5P6 +/-0.25P NPO 50V	C240		015-24100-08	CAP CER 0805 CHIP 1N 10% X7R 50V
C141		015-22390-01	CAP CER 0805 CHIP 39P 5% NPO 50V	C241		015-24100-08	CAP CER 0805 CHIP 1N 10% X7R 50V
C142		015-21560-01	CAP CER 0805 CHIP 5P6 +/-0.25P NPO 50V	C242		015-25100-08	CAP CER 0805 CHIP 10N 10% X7R 50V
C149		015-22330-01	CAP CER 0805 CHIP 33P 5% NPO 50V	C243		015-22330-01	CAP CER 0805 CHIP 33P 5% NPO 50V
C158		015-24100-08	CAP CER 0805 CHIP 1N 10% X7R 50V	C244		015-22560-01	CAP CER 0805 CHIP 56P 5% NPO 50V
C174		020-58470-05	CAP ELECT AI RDL 47M 16V 6.3X7MM	C245		015-25100-08	CAP CER 0805 CHIP 10N 10% X7R 50V
C175		015-06100-08	CAP CER 1206 CHIP 100N 10% X7R 50V	C246		015-24100-08	CAP CER 0805 CHIP 1N 10% X7R 50V
C176		015-06100-08	CAP CER 1206 CHIP 100N 10% X7R 50V	C247		015-21270-01	CAP CER 0805 CHIP 2P7 +/-0.25P NPO 50V
C179		015-25100-08	CAP CER 0805 CHIP 10N 10% X7R 50V	C248		020-09100-07	CAP ELECT 100M 10V 6.3X7MM 5MM
C180		015-06100-08	CAP CER 1206 CHIP 100N 10% X7R 50V	C249		015-24100-08	CAP CER 0805 CHIP 1N 10% X7R 50V
C181		015-06100-08	CAP CER 1206 CHIP 100N 10% X7R 50V	C250		015-22220-01	CAP CER 0805 CHIP 22P 5% NPO 50V
C182		015-22330-01	CAP CER 0805 CHIP 33P 5% NPO 50V	C251		015-23120-01	CAP CER 0805 CHIP 120P 5% NPO 50V
C184		015-22330-01	CAP CER 0805 CHIP 33P 5% NPO 50V	C252		015-22180-01	CAP CER 0805 CHIP 18P 5% NPO 50V
C185		015-25100-08	CAP CER 0805 CHIP 10N 10% X7R 50V	C253		015-22120-01	CAP CER 0805 CHIP 12P 5% NPO 50V
C186		015-25100-08	CAP CER 0805 CHIP 10N 10% X7R 50V	C254		015-24100-08	CAP CER 0805 CHIP 1N 10% X7R 50V
C187		015-24100-08	CAP CER 0805 CHIP 1N 10% X7R 50V	C255		015-21270-01	CAP CER 0805 CHIP 2P7 +/-0.25P NPO 50V
C188		015-22330-01	CAP CER 0805 CHIP 33P 5% NPO 50V	C256		015-24100-08	CAP CER 0805 CHIP 1N 10% X7R 50V
C189		015-23470-08	CAP CER 0805 CHIP 470P 10% X7R 50V	C301		015-24100-08	CAP CER 0805 CHIP 1N 10% X7R 50V
C190		015-23470-08	CAP CER 0805 CHIP 470P 10% X7R 50V	C303		015-22330-01	CAP CER 0805 CHIP 33P 5% NPO 50V
C191		015-23560-08	CAP CER 0805 CHIP 560P 10% X7R 50V	C304		015-24100-08	CAP CER 0805 CHIP 1N 10% X7R 50V
C192		015-22330-01	CAP CER 0805 CHIP 33P 5% NPO 50V	C305		015-22330-01	CAP CER 0805 CHIP 33P 5% NPO 50V
C193		020-57470-10	CAP ELECT AI RDL 4U7 50V LO ESR	C306		015-21390-01	CAP CER 0805 CHIP 3P9 +/-0.25P NPO 50V
C194		015-22330-01	CAP CER 0805 CHIP 33P 5% NPO 50V	C307		015-06100-08	CAP CER 1206 CHIP 100N 10% X7R 50V
C195		015-22330-01	CAP CER 0805 CHIP 33P 5% NPO 50V	C308		015-24100-08	CAP CER 0805 CHIP 1N 10% X7R 50V
C197		015-06100-08	CAP CER 1206 CHIP 100N 10% X7R 50V	C309		015-22330-01	CAP CER 0805 CHIP 33P 5% NPO 50V
C198		015-21100-01	CAP CER 0805 CHIP 1P0 +/-0.25P NPO 50V	C310		015-06100-08	CAP CER 1206 CHIP 100N 10% X7R 50V
C199		015-24100-08	CAP CER 0805 CHIP 1N 10% X7R 50V	C311		015-22330-01	CAP CER 0805 CHIP 33P 5% NPO 50V
C200		015-25100-08	CAP CER 0805 CHIP 10N 10% X7R 50V	C312		015-24100-08	CAP CER 0805 CHIP 1N 10% X7R 50V
C201		015-06100-08	CAP CER 1206 CHIP 100N 10% X7R 50V	C313		015-21470-01	CAP CER 0805 CHIP 4P7 +/-0.25P NPO 50V
C202		015-22220-01	CAP CER 0805 CHIP 22P 5% NPO 50V	C314		015-21470-01	CAP CER 0805 CHIP 4P7 +/-0.25P NPO 50V
C203		015-25220-08	CAP CER 0805 CHIP 22N 10% X7R 50V	C315		015-22330-01	CAP CER 0805 CHIP 33P 5% NPO 50V
C204		015-06100-08	CAP CER 1206 CHIP 100N 10% X7R 50V	C316		015-24100-08	CAP CER 0805 CHIP 1N 10% X7R 50V
C205		015-25220-08	CAP CER 0805 CHIP 22N 10% X7R 50V	C317		015-22330-01	CAP CER 0805 CHIP 33P 5% NPO 50V
C206		015-06100-08	CAP CER 1206 CHIP 100N 10% X7R 50V	C318		015-22330-01	CAP CER 0805 CHIP 33P 5% NPO 50V
C207		015-25100-08	CAP CER 0805 CHIP 10N 10% X7R 50V	C319		015-21330-01	CAP CER 0805 CHIP 3P3 +/-0.25P NPO 50V
C208		015-23100-01	CAP CER 0805 CHIP 100P 5% NPO 50V	C320		015-22330-01	CAP CER 0805 CHIP 33P 5% NPO 50V
C209		015-06100-08	CAP CER 1206 CHIP 100N 10% X7R 50V	C321		015-22330-01	CAP CER 0805 CHIP 33P 5% NPO 50V
C210		015-23100-01	CAP CER 0805 CHIP 100P 5% NPO 50V	C322		015-06100-08	CAP CER 1206 CHIP 100N 10% X7R 50V
C211		015-22560-01	CAP CER 0805 CHIP 56P 5% NPO 50V	C324		015-25100-08	CAP CER 0805 CHIP 10N 10% X7R 50V
CV212		028-02200-01	CAP TRIM 4/20P N750 TOP ADJ RED MUR TZ	C325		015-22330-01	CAP CER 0805 CHIP 33P 5% NPO 50V

Ref	Var	IPN	Description	Ref	Var	IPN	Description
C326		015-22330-01	CAP CER 0805 CHIP 33P 5% NPO 50V	L1		030-50000-00	LINK WIRE AI ZERO OHM 0.6MM WIRE
C328		015-24100-08	CAP CER 0805 CHIP 1N 10% X7R 50V	L107		050-10061-70	BALUN MIXER SMD 617DB-1018
C329		015-22330-01	CAP CER 0805 CHIP 33P 5% NPO 50V	L108		050-10061-70	BALUN MIXER SMD 617DB-1018
C330		015-22330-01	CAP CER 0805 CHIP 33P 5% NPO 50V	L110		056-00021-60	IND FXD 330NH 6.6X2.7MM AXIAL NON MAGNET
C331		015-22330-01	CAP CER 0805 CHIP 33P 5% NPO 50V	L114		050-00016-62	COIL IF 1UH AT 30MHZ 6MMSQX6.2MMH CAN 29
C332		015-22330-01	CAP CER 0805 CHIP 33P 5% NPO 50V	L116		050-00016-62	COIL IF 1UH AT 30MHZ 6MMSQX6.2MMH CAN 29
C333		015-22330-01	CAP CER 0805 CHIP 33P 5% NPO 50V	L117		050-00016-65	COIL BALUN 7.2MM2 5X0.5PINS 5T/4 456DB-1
C334		015-22330-01	CAP CER 0805 CHIP 33P 5% NPO 50V	L118		050-00016-65	COIL BALUN 7.2MM2 5X0.5PINS 5T/4 456DB-1
C335		015-22330-01	CAP CER 0805 CHIP 33P 5% NPO 50V	L119		050-00016-55	COIL TAIT NO 655 455KHZ QUAD COIL 7MM CA
C336		015-22330-01	CAP CER 0805 CHIP 33P 5% NPO 50V	L120		057-10005-03	IND 0805 BLM21B05 EMI SUPRSN 5 OHM AT 10
C337		015-22330-01	CAP CER 0805 CHIP 33P 5% NPO 50V	L121		057-10120-03	IND 0805 BLM21A121 EMI SUPRSN 120 OHM @
C338		015-22330-01	CAP CER 0805 CHIP 33P 5% NPO 50V	L200		057-10005-03	IND 0805 BLM21B05 EMI SUPRSN 5 OHM AT 10
C339		015-22330-01	CAP CER 0805 CHIP 33P 5% NPO 50V	L201		057-00100-00	IND FXD SMD 100NH 10% 2.5X3.5MM MUR LQN2
C340		015-02330-06	CAP CER 1210 CHIP 33P NPO 500V GRM42-2	L202		056-10820-00	IND FXD SMD 820NH 3.2*2.5*1.6 SIEMENS SM
C341		015-01270-06	CAP CER 1210 CHIP 2P7 NPO 200V GRM42-2	L204		050-00016-62	COIL IF 1UH AT 30MHZ 6MMSQX6.2MMH CAN 29
C342		015-21100-01	CAP CER 0805 CHIP 1P0 +/-0.25P NPO 50V	L205		056-10330-00	IND FXD SMD 330NH 3.2*2.5*1.6 SIEMENS SM
C343		015-01330-06	CAP CER 1210 CHIP 3P3 NPO 500V GRM42-2	L206		056-10330-00	IND FXD SMD 330NH 3.2*2.5*1.6 SIEMENS SM
C344		015-01330-06	CAP CER 1210 CHIP 3P3 NPO 500V GRM42-2	L207		051-00616-00	COAX RES 28MM (STRIPPED) X 2.18MM T2000
C345		015-21100-01	CAP CER 0805 CHIP 1P0 +/-0.25P NPO 50V	L208		056-10330-00	IND FXD SMD 330NH 3.2*2.5*1.6 SIEMENS SM
C346		015-01270-06	CAP CER 1210 CHIP 2P7 NPO 200V GRM42-2	L209		056-10330-00	IND FXD SMD 330NH 3.2*2.5*1.6 SIEMENS SM
C347		015-22330-01	CAP CER 0805 CHIP 33P 5% NPO 50V	L211		056-10100-00	IND FXD SMD 100NH 3.2*2.5*1.6 SIEMENS SM
C348		015-22330-01	CAP CER 0805 CHIP 33P 5% NPO 50V	L213		056-10100-00	IND FXD SMD 100NH 3.2*2.5*1.6 SIEMENS SM
C349		015-22330-01	CAP CER 0805 CHIP 33P 5% NPO 50V	L214		056-10330-00	IND FXD SMD 330NH 3.2*2.5*1.6 SIEMENS SM
C350		015-22330-01	CAP CER 0805 CHIP 33P 5% NPO 50V	L300		056-10330-00	IND FXD SMD 330NH 3.2*2.5*1.6 SIEMENS SM
C351		015-24100-08	CAP CER 0805 CHIP 1N 10% X7R 50V	L302		056-10330-00	IND FXD SMD 330NH 3.2*2.5*1.6 SIEMENS SM
C352		015-02330-06	CAP CER 1210 CHIP 33P NPO 500V GRM42-2	L304		057-10005-03	IND 0805 BLM21B05 EMI SUPRSN 5 OHM AT 10
C353		015-24100-08	CAP CER 0805 CHIP 1N 10% X7R 50V	L306		057-10005-03	IND 0805 BLM21B05 EMI SUPRSN 5 OHM AT 10
C354		022-06330-03	CAP METAL POLYES 330N 10% 50V 5MM L/S	L308		052-56130-85	COIL A/W 8.5T/3.0MM HOR 0.56MM WIRE
C355		015-22330-01	CAP CER 0805 CHIP 33P 5% NPO 50V	L309		057-00015-00	IND FXD 15NH +-5% 1206 CHIP MUR LQN1A15N
C356		015-06100-08	CAP CER 1206 CHIP 100N 10% X7R 50V	L311		052-56130-85	COIL A/W 8.5T/3.0MM HOR 0.56MM WIRE
C357		015-24100-08	CAP CER 0805 CHIP 1N 10% X7R 50V	L312		056-00021-60	IND FXD 330NH 6.6X2.7MM AXIAL NON MAGNET
C358		015-24100-08	CAP CER 0805 CHIP 1N 10% X7R 50V	L313		052-08330-10	COIL A/W 1T/3.0MM SMD 0.8MM WIRE
C359		015-24100-08	CAP CER 0805 CHIP 1N 10% X7R 50V	L315		052-08130-25	COIL A/W 2.5T/3.0MM HOR 0.8MM WIRE
C360		015-22330-01	CAP CER 0805 CHIP 33P 5% NPO 50V	L316		052-56130-85	COIL A/W 8.5T/3.0MM HOR 0.56MM WIRE
C361		015-06100-08	CAP CER 1206 CHIP 100N 10% X7R 50V	L317		052-56130-85	COIL A/W 8.5T/3.0MM HOR 0.56MM WIRE
C362		020-57100-55	CAP ELECT AI RDL 1UF 50V 4X7MM	L318		052-56130-85	COIL A/W 8.5T/3.0MM HOR 0.56MM WIRE
C363		015-24100-08	CAP CER 0805 CHIP 1N 10% X7R 50V	L319		052-56130-85	COIL A/W 8.5T/3.0MM HOR 0.56MM WIRE
C364		015-06100-08	CAP CER 1206 CHIP 100N 10% X7R 50V	L320		052-08130-35	COIL A/W 3.5T/3.0MM HOR 0.8MM WIRE
C365		020-57100-55	CAP ELECT AI RDL 1UF 50V 4X7MM	L321		052-56130-85	COIL A/W 8.5T/3.0MM HOR 0.56MM WIRE
C366		015-22330-01	CAP CER 0805 CHIP 33P 5% NPO 50V	L322		052-08340-10	COIL A/W 1T/4.0MM SMD 0.8MM WIRE
C367		015-24100-08	CAP CER 0805 CHIP 1N 10% X7R 50V	L323		052-08345-10	COIL A/W 1T/4.5MM SMD 0.8MM WIRE
C403		015-23470-08	CAP CER 0805 CHIP 470P 10% X7R 50V	L324		052-08335-10	COIL A/W 1T/3.5MM SMD 0.8MM WIRE
C410		020-57470-10	CAP ELECT AI RDL 4U7 50V LO ESR	L325		030-50000-00	LINK WIRE AI ZERO OHM 0.6MM WIRE
C411		015-06100-08	CAP CER 1206 CHIP 100N 10% X7R 50V	L326		030-50000-00	LINK WIRE AI ZERO OHM 0.6MM WIRE
C412		020-58470-05	CAP ELECT AI RDL 47M 16V 6.3X7MM	L327		057-10005-03	IND 0805 BLM21B05 EMI SUPRSN 5 OHM AT 10
C413		015-06100-08	CAP CER 1206 CHIP 100N 10% X7R 50V	L331		057-10005-03	IND 0805 BLM21B05 EMI SUPRSN 5 OHM AT 10
C414		020-09470-05	CAP ELECT RADL 470M 16V 10X12.5MM	L401		050-00016-50	COIL TAIT NO 650 455KHZ 5.6MM CAN
C415		020-19100-02	CAP ELECT RADL 1000M 16V 12X20MM				
C416		015-23470-08	CAP CER 0805 CHIP 470P 10% X7R 50V	P1		240-00026-24	CONN PADLE BRD 16 WAY MICRO MATCH 1-2155
C419		015-06100-08	CAP CER 1206 CHIP 100N 10% X7R 50V	P2		240-00026-26	CONN PADLE BRD 12 WAY MICRO MATCH 1-2155
C420		015-06100-08	CAP CER 1206 CHIP 100N 10% X7R 50V	P3		240-00026-21	PLUG CAP HOUSING 7-POS CONN 172039-1
C423		020-08560-09	CAP ELECT RADL 56M 50V 6.3X15.5MM L/S	P5		240-00010-76	PLUG HEADER 10WAY MICROMATCH PCB MTD 1-
C424		020-57470-10	CAP ELECT AI RDL 4U7 50V LO ESR	P6		240-00010-76	PLUG HEADER 10WAY MICROMATCH PCB MTD 1-
C425		020-57470-10	CAP ELECT AI RDL 4U7 50V LO ESR	P7		240-00020-72	HEADER 2 WAY PCB MTG ULTREX
C426		015-25100-08	CAP CER 0805 CHIP 10N 10% X7R 50V				
C427		020-57470-10	CAP ELECT AI RDL 4U7 50V LO ESR	Q101		000-10052-00	(LS) XSTR SMD BFG520/X 9GHZ RF SML SIG N
C428		020-57470-10	CAP ELECT AI RDL 4U7 50V LO ESR	Q102		000-10008-57	(S) XSTR SMD BCW70 PNP SOT23 AF SML SIG
C429		015-24100-08	CAP CER 0805 CHIP 1N 10% X7R 50V	Q103		000-10095-10	(S) XSTR SMD MMBR951 NPN UHF SOT-23
C430		020-08560-09	CAP ELECT RADL 56M 50V 6.3X15.5MM L/S	Q115		000-10008-48	(S) XSTR SMD BCW60/BC848B215 NPN SOT23 A
C431		015-06100-08	CAP CER 1206 CHIP 100N 10% X7R 50V	Q200		000-10003-10	(S) XSTR SMD MMBFJ310 JFET SOT-23 UHF
				Q201		000-10008-57	(S) XSTR SMD BCW70 PNP SOT23 AF SML SIG
				Q202		000-10003-10	(S) XSTR SMD MMBFJ310 JFET SOT-23 UHF
				Q203		000-10008-48	(S) XSTR SMD BCW60/BC848B215 NPN SOT23 A
				Q204		000-10008-48	(S) XSTR SMD BCW60/BC848B215 NPN SOT23 A
				Q205		000-10008-57	(S) XSTR SMD BCW70 PNP SOT23 AF SML SIG
				Q206		000-10008-48	(S) XSTR SMD BCW60/BC848B215 NPN SOT23 A
				Q207		000-10008-57	(S) XSTR SMD BCW70 PNP SOT23 AF SML SIG
				Q208		000-10008-48	(S) XSTR SMD BCW60/BC848B215 NPN SOT23 A
				Q209		000-10008-57	(S) XSTR SMD BCW70 PNP SOT23 AF SML SIG
				Q210		000-10003-12	(S) XSTR SMD BFR31 N JFET SOT-23
				Q211		000-10008-48	(S) XSTR SMD BCW60/BC848B215 NPN SOT23 A
				Q212		000-10009-41	(S) XSTR SMD MMBR941L RF LOW NOISE SOT23
				Q213		000-10008-48	(S) XSTR SMD BCW60/BC848B215 NPN SOT23 A
				Q214		000-10009-41	(S) XSTR SMD MMBR941L RF LOW NOISE SOT23
				Q215		000-10057-10	(S) XSTR SMD MMBR571 NPN SOT-23 UHF LO P
				Q300		000-10095-10	(S) XSTR SMD MMBR951 NPN UHF SOT-23
				Q301		000-10095-10	(S) XSTR SMD MMBR951 NPN UHF SOT-23
				Q302		000-00032-47	(S) XSTR MRF559 NPN XPACK UHF PWR 0.5W
				Q303		000-10008-48	(S) XSTR SMD BCW60/BC848B215 NPN SOT23 A
				Q304		000-00012-15	(S) XSTR BD234 PNP AF PWR TO126
				Q305		000-10008-48	(S) XSTR SMD BCW60/BC848B215 NPN SOT23 A
				Q306		000-10008-07	(S) XSTR SMD BC807 PNP SOT-23 AF LO PWR
				Q307		000-10008-48	(S) XSTR SMD BCW60/BC848B215 NPN SOT23 A
				Q308		000-10008-07	(S) XSTR SMD BC807 PNP SOT-23 AF LO PWR
				Q309		000-10008-48	(S) XSTR SMD BCW60/BC848B215 NPN SOT23 A
				Q401		000-10008-57	(S) XSTR SMD BCW70 PNP SOT23 AF SML SIG
D1		001-00012-90	(S) DIODE MR2520L OVERVOLT SUPPRESSOR				
D100		001-10000-99	(S) DIODE SMD BAV99 DUAL SWITCH SINGLE INL				
D107		001-10000-17	(S) DIODE SMD DUAL BAT-17 SCHOTTKY SML S				
D108		001-10000-17	(S) DIODE SMD DUAL BAT-17 SCHOTTKY SML S				
D110		001-10014-00	(LS) DIODE SMD BAT14-099R QUAD CRSSD SCH				
D202		001-10000-70	(S) DIODE SMD BAV70 DUAL SWITCH SOT-23 C				
D203		001-10005-35	(S) DIODE SMD VARICAP BB535 SOD323				
D204		001-10005-35	(S) DIODE SMD VARICAP BB535 SOD323				
D205		001-10005-35	(S) DIODE SMD VARICAP BB535 SOD323				
D206		001-10005-35	(S) DIODE SMD VARICAP BB535 SOD323				
D208		001-10014-01	(LS) DIODE SMD BAR14-1 DUAL SI PIN SOT-2				
D301		001-00013-45	(S) DIODE SCHOTTKY 1SS97/2				
D302		001-00012-50	(S) DIODE PIN UM9401 UHF PWR SWITCH				
D303		001-00012-50	(S) DIODE PIN UM9401 UHF PWR SWITCH				
D304		001-00010-26	(S) DIODE BA482 RF SWITCH				
D401		001-10000-70	(S) DIODE SMD BAV70 DUAL SWITCH SOT-23 C				
IC101		002-10033-71	(S) IC SMD MC3371D-R2 FM IF DETECT RSSI				
IC201		002-10451-58	(S) IC SMD MC145158DW2 FREQ SYNTH SOIC				
IC202		002-10330-78	(S) IC MC33078D-R2 DUAL AMP LO NOISE SO				
IC203		002-10120-22	(S) IC SMD MC12022AD-R2 PRESC 8-P				
IC402		002-00013-70	(S) IC TDA1020 AF PWR AMP 9PIN SIL				
IC403		002-00078-08	(S) IC MC7808ACT 8V REG(LINEAR)1AMP TO-				
IC404		002-00078-05	(S) IC MC7805ACT 5V REG(LINEAR)1AMP TO-				
IC405		004-00070-73	(L) MODULE RF PWR MHW820-1 806-870MHZ 2				

Ref	Var	IPN	Description	Ref	Var	IPN	Description
Q402		000-10008-17	(S) XSTR SMD BC817-25 NPN SOT-23 AF LO P	R267		036-14330-00	RES M/F 0805 CHIP 3K3 5%
R101		036-14390-00	RES M/F 0805 CHIP 3K9 5%	R268		036-12560-00	RES M/F 0805 CHIP 56E 5%
R102		036-13560-00	RES M/F 0805 CHIP 560E 5%	R271		036-13150-00	RES M/F 0805 CHIP 150E 5%
R103		036-14220-00	RES M/F 0805 CHIP 2K2 5%	R272		036-13150-00	RES M/F 0805 CHIP 150E 5%
R104		036-13100-00	RES M/F 0805 CHIP 100E 5%	R273		036-12100-00	RES M/F 0805 CHIP 10E 5%
R105		036-12180-00	RES M/F 0805 CHIP 18E 5%	R274		036-13470-00	RES M/F 0805 CHIP 470E 5%
R106		036-16100-00	RES M/F 0805 CHIP 100K 5%	R275		036-12100-00	RES M/F 0805 CHIP 10E 5%
R107		036-10000-00	RES M/F 0805 CHIP ZERO OHM	R276		036-14220-00	RES M/F 0805 CHIP 2K2 5%
R108		036-16100-00	RES M/F 0805 CHIP 100K 5%	R277		036-12560-00	RES M/F 0805 CHIP 56E 5%
R112		036-12470-00	RES M/F 0805 CHIP 47E 5%	R278		036-16100-00	RES M/F 0805 CHIP 100K 5%
R113		036-11470-00	RES M/F 0805 CHIP 4E7 10%	R279		036-13180-00	RES M/F 0805 CHIP 180E 5%
R114		036-13820-00	RES M/F 0805 CHIP 820E 5%	R280		036-12270-00	RES M/F 0805 CHIP 27E 5%
R115		036-15120-00	RES M/F 0805 CHIP 12K 5%	R281		036-13180-00	RES M/F 0805 CHIP 180E 5%
R116		036-11470-00	RES M/F 0805 CHIP 4E7 10%	R301		036-13220-00	RES M/F 0805 CHIP 220E 5%
R117		036-12100-00	RES M/F 0805 CHIP 10E 5%	R302		036-14120-00	RES M/F 0805 CHIP 1K2 5%
R118		036-13100-00	RES M/F 0805 CHIP 100E 5%	R303		036-13100-00	RES M/F 0805 CHIP 100E 5%
R119		036-12100-00	RES M/F 0805 CHIP 10E 5%	R305		036-12100-00	RES M/F 0805 CHIP 10E 5%
R138		036-16100-00	RES M/F 0805 CHIP 100K 5%	R306		036-14100-00	RES M/F 0805 CHIP 1K 5%
R151		036-14330-00	RES M/F 0805 CHIP 3K3 5%	R307		036-12680-00	RES M/F 0805 CHIP 68E 5%
R152		036-16390-00	RES M/F 0805 CHIP 390K 5%	R308		036-14100-00	RES M/F 0805 CHIP 1K 5%
RV153		042-05470-07	RES PRESET 47K CARBON 6MM FLAT DUAL ADJ	R309		036-14100-00	RES M/F 0805 CHIP 1K 5%
R155		036-16100-00	RES M/F 0805 CHIP 100K 5%	R310		036-12470-00	RES M/F 0805 CHIP 47E 5%
R156		036-13100-00	RES M/F 0805 CHIP 100E 5%	R311		036-13180-00	RES M/F 0805 CHIP 180E 5%
R157		036-15100-00	RES M/F 0805 CHIP 10K 5%	R312		036-13680-00	RES M/F 0805 CHIP 680E 5%
R158		036-14100-00	RES M/F 0805 CHIP 1K 5%	R313		036-14100-00	RES M/F 0805 CHIP 1K 5%
R159		036-12470-00	RES M/F 0805 CHIP 47E 5%	R314		036-12100-00	RES M/F 0805 CHIP 10E 5%
R160		036-12100-00	RES M/F 0805 CHIP 10E 5%	R315		036-12120-00	RES M/F 0805 CHIP 12E 5%
R161		036-14100-00	RES M/F 0805 CHIP 1K 5%	R316		036-13150-00	RES M/F 0805 CHIP 150E 5%
R194		036-10000-00	RES M/F 0805 CHIP ZERO OHM	R317		036-13470-00	RES M/F 0805 CHIP 470E 5%
R195		036-15680-00	RES M/F 0805 CHIP 68K 5%	R318		036-13470-00	RES M/F 0805 CHIP 470E 5%
R196		036-13100-00	RES M/F 0805 CHIP 100E 5%	R321		036-16470-00	RES M/F 0805 CHIP 470K 5%
R197		036-13100-00	RES M/F 0805 CHIP 100E 5%	RV324		042-06470-06	RES PRESET 470/500K 25% 6MM ROUND TOP A
R198		036-14220-00	RES M/F 0805 CHIP 2K2 5%	R326		036-16220-00	RES M/F 0805 CHIP 220K 5%
R199		036-13100-00	RES M/F 0805 CHIP 100E 5%	R327		036-14100-00	RES M/F 0805 CHIP 1K 5%
R200		036-14100-00	RES M/F 0805 CHIP 1K 5%	R328		030-53330-20	RES FILM AI 330E 5% 0.4W 4X1.6MM
R201		036-13100-00	RES M/F 0805 CHIP 100E 5%	R329		036-14100-00	RES M/F 0805 CHIP 1K 5%
R203		036-12220-00	RES M/F 0805 CHIP 22E 5%	R330		036-16220-00	RES M/F 0805 CHIP 220K 5%
R209		036-14220-00	RES M/F 0805 CHIP 2K2 5%	R332		036-13100-00	RES M/F 0805 CHIP 100E 5%
R212		036-13680-00	RES M/F 0805 CHIP 680E 5%	R333		036-14220-00	RES M/F 0805 CHIP 2K2 5%
R213		036-14120-00	RES M/F 0805 CHIP 1K2 5%	R336		030-53100-20	RES FILM AI 100E 5% 0.4W 4X1.6MM
R214		036-13680-00	RES M/F 0805 CHIP 680E 5%	R337		036-10000-00	RES M/F 0805 CHIP ZERO OHM
R217		036-12470-00	RES M/F 0805 CHIP 47E 5%	R338		036-15270-00	RES M/F 0805 CHIP 27K 5%
R219		036-14100-00	RES M/F 0805 CHIP 1K 5%	R339		036-15100-00	RES M/F 0805 CHIP 10K 5%
R221		036-13100-00	RES M/F 0805 CHIP 100E 5%	R340		036-15100-00	RES M/F 0805 CHIP 10K 5%
RV222		042-05470-07	RES PRESET 47K CARBON 6MM FLAT DUAL ADJ	R341		036-15470-00	RES M/F 0805 CHIP 47K 5%
R223		036-15220-00	RES M/F 0805 CHIP 22K 5%	R342		036-16390-00	RES M/F 0805 CHIP 390K 5%
R224		036-15220-00	RES M/F 0805 CHIP 22K 5%	R343		036-14470-00	RES M/F 0805 CHIP 4K7 5%
R225		036-15220-00	RES M/F 0805 CHIP 22K 5%	R344		036-14470-00	RES M/F 0805 CHIP 4K7 5%
R226		036-15120-00	RES M/F 0805 CHIP 12K 5%	R345		036-15100-00	RES M/F 0805 CHIP 10K 5%
R227		036-13470-00	RES M/F 0805 CHIP 470E 5%	R346		036-13680-00	RES M/F 0805 CHIP 680E 5%
R228		036-14330-00	RES M/F 0805 CHIP 3K3 5%	R347		030-53100-20	RES FILM AI 100E 5% 0.4W 4X1.6MM
R229		036-12220-00	RES M/F 0805 CHIP 22E 5%	R348		030-53330-20	RES FILM AI 330E 5% 0.4W 4X1.6MM
R230		036-13470-00	RES M/F 0805 CHIP 470E 5%	R349		036-14100-00	RES M/F 0805 CHIP 1K 5%
R231		036-13220-00	RES M/F 0805 CHIP 220E 5%	R350		030-55270-20	RES FILM AI 27K 5% 0.4W 4X1.6MM
R232		036-14220-00	RES M/F 0805 CHIP 2K2 5%	R351		036-12100-00	RES M/F 0805 CHIP 10E 5%
R233		036-17100-00	RES M/F 0805 CHIP 1M 5%	R352		036-12100-00	RES M/F 0805 CHIP 10E 5%
R234		036-13120-00	RES M/F 0805 CHIP 120E 5%	R353		036-12100-00	RES M/F 0805 CHIP 10E 5%
R235		036-13330-00	RES M/F 0805 CHIP 330E 5%	R354		036-15470-00	RES M/F 0805 CHIP 47K 5%
R236		036-12470-00	RES M/F 0805 CHIP 47E 5%	R418		036-13680-00	RES M/F 0805 CHIP 680E 5%
R237		036-13100-00	RES M/F 0805 CHIP 100E 5%	R420		036-15270-00	RES M/F 0805 CHIP 27K 5%
R238		036-14820-00	RES M/F 0805 CHIP 8K2 5%	R421		036-15270-00	RES M/F 0805 CHIP 27K 5%
R239		036-15220-00	RES M/F 0805 CHIP 22K 5%	R422		036-12220-00	RES M/F 0805 CHIP 22E 5%
R240		036-16100-00	RES M/F 0805 CHIP 100K 5%	R425		036-14100-00	RES M/F 0805 CHIP 1K 5%
R241		036-14150-00	RES M/F 0805 CHIP 1K5 5%	R426		036-11470-00	RES M/F 0805 CHIP 4E7 10%
R242		036-12220-00	RES M/F 0805 CHIP 22E 5%	R427		036-11470-00	RES M/F 0805 CHIP 4E7 10%
R243		036-14330-00	RES M/F 0805 CHIP 3K3 5%	R428		036-12220-00	RES M/F 0805 CHIP 22E 5%
R244		036-12220-00	RES M/F 0805 CHIP 22E 5%	R429		036-15270-00	RES M/F 0805 CHIP 27K 5%
R245		036-12220-00	RES M/F 0805 CHIP 22E 5%	R430		036-14680-00	RES M/F 0805 CHIP 6K8 5%
R247		036-12330-00	RES M/F 0805 CHIP 33E 5%	R431		036-16100-00	RES M/F 0805 CHIP 100K 5%
R248		036-10000-00	RES M/F 0805 CHIP ZERO OHM	R432		036-12100-00	RES M/F 0805 CHIP 10E 5%
R249		036-12220-00	RES M/F 0805 CHIP 22E 5%	R433		036-13100-00	RES M/F 0805 CHIP 100E 5%
R250		036-14220-00	RES M/F 0805 CHIP 2K2 5%	R434		036-12470-00	RES M/F 0805 CHIP 47E 5%
R251		036-13560-00	RES M/F 0805 CHIP 560E 5%	R437		036-14100-00	RES M/F 0805 CHIP 1K 5%
R252		036-14100-00	RES M/F 0805 CHIP 1K 5%	R441		030-55270-20	RES FILM AI 27K 5% 0.4W 4X1.6MM
R253		036-12680-00	RES M/F 0805 CHIP 68E 5%	XF101		276-00010-73	FLTR CER DIELECTRIC 2 POLE 860MHZ
R255		036-13100-00	RES M/F 0805 CHIP 100E 5%	XF102		276-00010-74	FLTR CER DIELECTRIC 3 POLE 860MHZ
R256		036-14180-00	RES M/F 0805 CHIP 1K8 5%				
R257		036-14120-00	RES M/F 0805 CHIP 1K2 5%				
R258		036-12100-00	RES M/F 0805 CHIP 10E 5%				
R259		036-14100-00	RES M/F 0805 CHIP 1K 5%				
R260		036-14150-00	RES M/F 0805 CHIP 1K5 5%				
R261		036-12330-00	RES M/F 0805 CHIP 33E 5%				
R262		036-12100-00	RES M/F 0805 CHIP 10E 5%				
R263		036-16180-00	RES M/F 0805 CHIP 180K 5%				
R266		036-14330-00	RES M/F 0805 CHIP 3K3 5%				

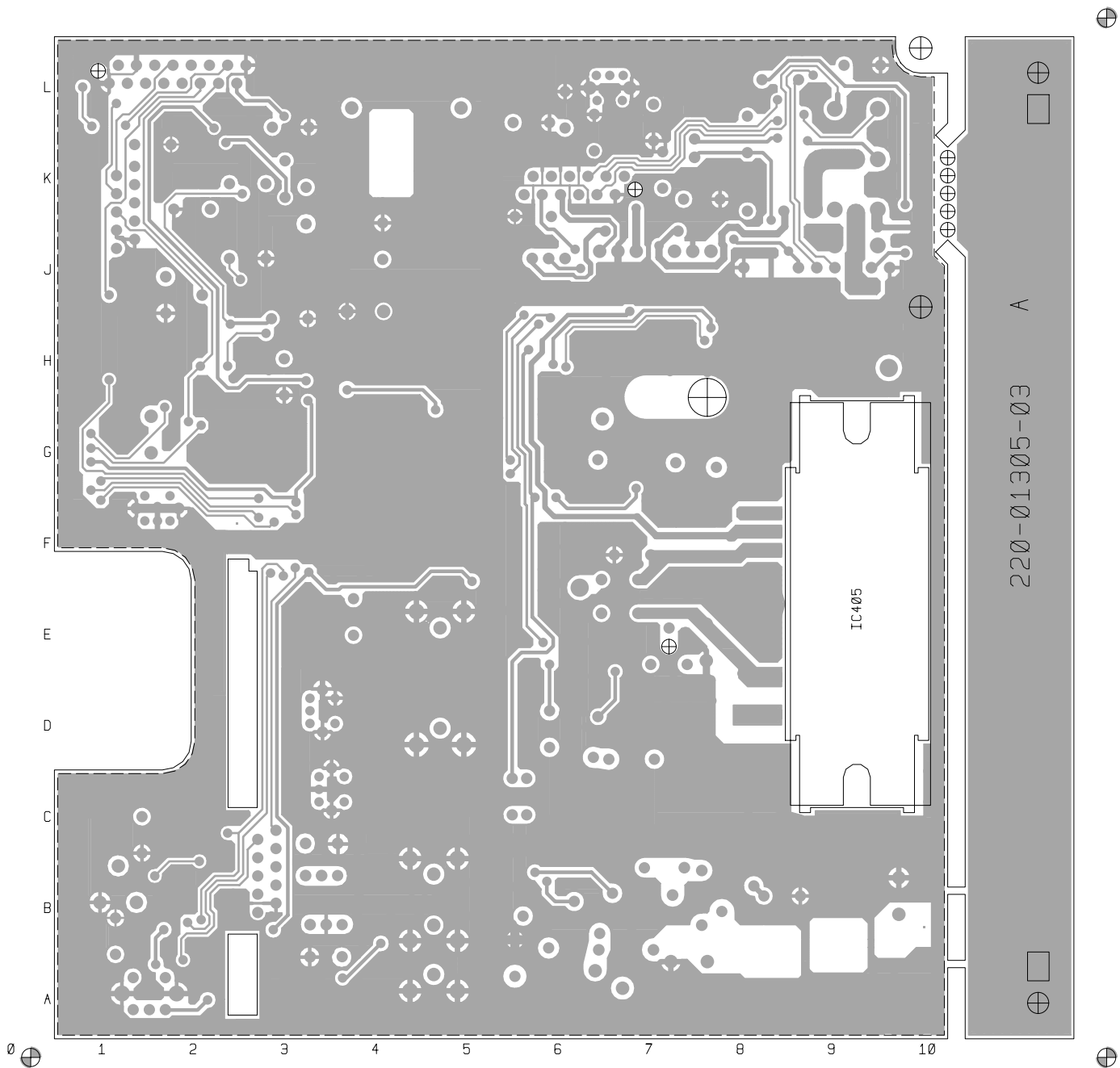
## T2000-800 Mechanical & Miscellaneous Parts

IPN	Description	IPN	Description
065-00010-11	BEAD FERRITE 4S3 3*1*4MM RED L1, L325, L326		
201-00050-02	CABLE AUTO RED 7/0.32MM PVC		
205-00010-12	CABLE FLAT RBBN 16 CORE 16/7/0.1 GREY		
220-01305-03	PCB T2000 800MHZ RF BOARD		
240-00020-51	PLUG 12 WAY 2*6 FLAT CABLE TERMN		
240-00020-54	PLUG 16 WAY 2X8 FLAT CABLE TERMN MICROMATCH		
240-02100-11	SKT COAX BNC 3.5MM PNL NO EARTH TAG		
302-05223-00	BRKT T2000-80 PCB RETAINER		
303-23135-01	COVER BTTM A1M2505 T2000 PNTD CMLPT		
303-50077-00	CLIP A3M2525 T2000 AUDIO IC AND REG		
308-13114-00	CHASSIS COMPLETE T2000 800MHZ		
316-85094-00	PLATE A4M2160 BNC MTG UK 5X5 SERIES		
319-01164-01	SHIELD A1M2507 DIE CAST T2000 MICROP		
319-01167-00	SHIELD RX A3M2594 T2000		
349-00010-59	(L) SCREW 6-32 * 3/8 STEEL PAN PHILLIPS TAPTITE ZP		
349-00020-30	SCREW TAPTITE M3X6MM PAN POZI BZ		
349-00020-31	SCREW TAPTITE M3X10MM PAN POZI BZ		
349-00020-32	SCREW TAPTITE M3X8MM PAN POZI BZ Q306 =2 BNC PLATE =2 PCB TO CHASSIS =3		
349-00020-34	SCREW M3*12 PAN POZI TAPTITE BZ		
349-00020-48	SCREW M4X25MM PAN POZI TAPTITE II BRIGHT ZINC		
349-00020-49	SCREW TAPTITE M4X35MM PAN POZI BZ TOP COVER		
360-01053-01	PLUG A3M2563 PLASTIC D-RANGE BLANKING		
362-00010-08	GASKET SIL INSULATING TO-5 TO-39 FIT UNDER TRIM CAP CV212		
362-01027-01	GASKET A4M2564 RUBBER SEAL T2000 MAIN CONN		
362-01028-00	GASKET A4M2652 130X3MM CONDUCT STRIPS T2000		
362-01058-00	GASKET TO-126 11.1X7.9 D2.4 SIL INSULATION		

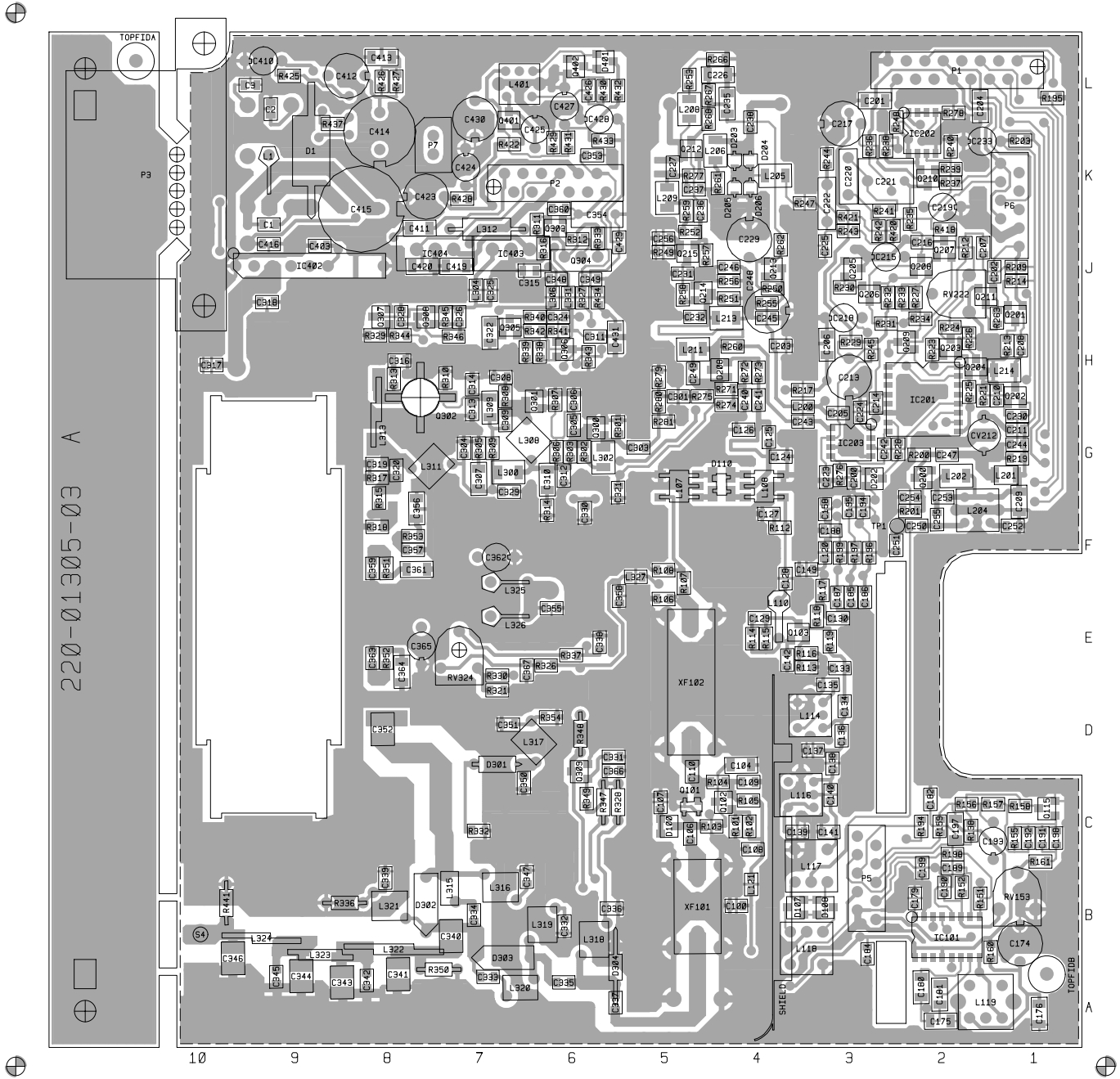
## T2000-800 Grid Reference Index (IPN 220-01305-03)

Device	PCB	Circuit	Device	PCB	Circuit	Device	PCB	Circuit	Device	PCB	Circuit
C1	1:J9	1-V9	C222	1:J3	1-H3	C345	1:A9	1-V0	IC402	1:J9	1-S8
C2	1:L9	1-U8	C223	1:G3	1-E3	C346	1:A10	1-W0	IC403	1:J7	1-K9
C3	1:L10	1-V8	C224	1:G3	1-E2	C347	1:B7	1-S1	IC404	1:J8	1-K8
C100	1:B4	1-S4	C225	1:J3	1-A0	C348	1:J6	1-U2	IC405	2:C9	1-P0
C104	1:D4	1-Q3	C226	1:L4	1-C1	C349	1:J6	1-V2			
C106	1:C5	1-R3	C227	1:K5	1-C0	C350	1:C7	1-S0	L1	1:K9	1-U9
C107	1:C5	1-R2	C229	1:J4	1-D1	C351	1:D7	1-R1	L107	1:G5	1-L3
C108	1:C4	1-S4	C230	1:G1	1-E7	C352	1:D8	1-R0	L108	1:G4	1-J3
C109	1:C4	1-P4	C231	1:J5	1-E0	C353	1:K6	1-V2	L110	1:E4	1-M5
C110	1:C5	1-P3	C232	1:H5	1-F1	C354	1:K6	1-U2	L114	1:D3	1-P5
C124	1:G4	1-I2	C233	1:K2	1-D8	C355	1:E6	1-P2	L116	1:C4	1-Q5
C125	1:G4	1-I2	C235	1:L4	1-C1	C356	1:F8	1-P1	L117	1:B3	1-R6
C126	1:G4	1-H2	C236	1:K5	1-D0	C357	1:F8	1-P1	L118	1:B3	1-T5
C127	1:F4	1-L5	C237	1:K5	1-C0	C358	1:E6	1-V1	L119	1:A2	1-K8
C128	1:F4	1-L5	C238	1:L4	1-B0	C359	1:F8	1-P1	L120	1:F3	1-L4
C129	1:E4	1-M5	C240	1:H4	1-H2	C360	1:K6	1-N1	L121	1:B4	1-S4
C130	1:E3	1-M5	C241	1:H4	1-H3	C361	1:F8	1-P1	L200	1:G4	1-C2
C133	1:E3	1-O5	C242	1:G3	1-B3	C362	1:F7	1-P1	L201	1:G1	1-D7
C134	1:D3	1-O6	C243	1:G4	1-E3	C363	1:E8	1-Q1	L202	1:G2	1-F7
C135	1:D3	1-P5	C244	1:G1	1-F7	C364	1:E8	1-Q1	L204	1:F2	1-G7
C136	1:D3	1-P6	C245	1:H4	1-E2	C365	1:E8	1-R1	L205	1:K4	1-A0
C137	1:D3	1-P5	C246	1:J4	1-E1	C366	1:D6	1-V1	L206	1:K4	1-B0
C138	1:D3	1-P6	C247	1:G2	1-F7	C367	1:E7	1-S1	L207		1-C0
C139	1:C4	1-Q5	C248	1:H4	1-E2	C403	1:J9	1-S7	L208	1:L5	1-C0
C140	1:C3	1-Q6	C249	1:H5	1-G0	C410	1:L9	1-S9	L209	1:K5	1-D0
C141	1:C3	1-Q5	C250	1:F2	1-H7	C411	1:J8	1-T7	L211	1:H5	1-G1
C142	1:E4	1-M5	C251	1:F3	1-H7	C412	1:L8	1-T9	L213	1:H4	1-F1
C149	1:F3	1-M4	C252	1:F1	1-G7	C413	1:L8	1-T8	L214	1:H1	1-D7
C158	1:F3	1-L4	C253	1:F2	1-G7	C414	1:K8	1-U9	L300	1:G7	1-L1
C174	1:B1	1-J8	C254	1:F2	1-G7	C415	1:K8	1-U9	L302	1:G6	1-I0
C175	1:A2	1-K8	C255	1:F2	1-G7	C416	1:J9	1-U8	L304	1:J7	1-L2
C176	1:A1	1-K8	C256	1:J5	1-F0	C419	1:J7	1-J8	L306	1:J6	1-O1
C179	1:B2		C301	1:H5	1-H0	C420	1:J8	1-K8	L308	1:G7	1-K0
C180	1:A2	1-L8	C303	1:G5	1-I0	C423	1:K8	1-K9	L309	1:G7	1-L0
C181	1:A2	1-L7	C304	1:G7	1-M1	C424	1:K7	1-L9	L311	1:G8	1-N0
C182	1:C2	1-N6	C305	1:G6	1-J0	C425	1:K6	1-N8	L312	1:J7	1-O2
C184	1:B3	1-M8	C306	1:H6	1-J0	C426	1:L6	1-O9	L313	1:G8	1-N0
C185	1:E3	1-I6	C307	1:G7	1-M1	C427	1:L6	1-P8	L315	1:B7	1-T0
C186	1:E3	1-J7	C308	1:H7	1-L0	C428	1:L6	1-Q8	L316	1:B7	1-T1
C187	1:E3	1-N8	C309	1:G7	1-L0	C429	1:J6	1-P8	L317	1:D6	1-R1
C188	1:F3	1-A6	C310	1:G6	1-J1	C430	1:L7	1-M9	L318	1:B6	1-U1
C189	1:B2	1-K6	C311	1:H6	1-T2	C431	1:H6	1-R8	L319	1:B6	1-U1
C190	1:B2	1-K7	C312	1:G6	1-I1				L320	1:A7	1-U1
C191	1:C1	1-M6	C313	1:G7	1-L0	D1	1:K9	1-V9	L321	1:B8	1-T0
C192	1:C1	1-M7	C314	1:H7	1-M0	D100	1:C5	1-Q3	L322	1:B8	1-U0
C193	1:C1	1-N7	C315	1:J6	1-O1			1-R3	L323	1:B9	1-V0
C194	1:F3	1-A7	C316	1:H8	1-N0	D107	1:B4	1-S6	L324	1:B10	1-V0
C195	1:F3	1-A8	C317	1:H10	1-R2			1-S5	L325	1:F7	1-Q2
C197	1:C2	1-O7	C318	1:J9	1-Q2	D108	1:B3	1-S5	L326	1:E7	1-Q2
C198	1:C1	1-M6	C319	1:G8	1-N0			1-S5	L327	1:F5	1-U2
C199	1:B2	1-M7	C320	1:G8	1-O0	D110	1:G4	1-K3	L331	1:J6	1-U2
C200	1:G3	1-B5	C321	1:G6	1-J2	D202	1:G3	1-C5	L401	1:L7	1-N9
C201	1:L3	1-B4	C322	1:H7	1-I1	D203	1:K4	1-A0			
C202	1:J1	1-B7	C324	1:H6	1-K2	D204	1:K4	1-B0	NOT-STD		1-O0
C203	1:H4	1-C2	C325	1:J7	1-L2	D205	1:K4	1-A0			
C204	1:L2	1-A5	C326	1:H7	1-L2	D206	1:K4	1-B0	P1	1:L1	1-A4
C205	1:G3	1-C2	C328	1:H8	1-M2	D208	1:H4	1-G2			1-A5
C206	1:H3		C329	1:G7	1-M1			1-G0			1-A5
C207	1:J2	1-B7	C330	1:F6	1-S2	D301	1:D7	1-R0			1-A5
C208	1:H1	1-D7	C331	1:D6	1-V1	D302	1:B8	1-T0			1-A6
C209	1:F1	1-G8	C332	1:B6	1-V1	D303	1:A6	1-T0			1-A5
C210	1:H1	1-E7	C333	1:A7	1-U0	D304	1:B6	1-T1			1-A4
C211	1:G1	1-E8	C334	1:B7	1-T0	D401	1:L6	1-P9			1-A6
CV212	1:G2	1-E7	C335	1:A6	1-T1			1-P9			1-A4
C213	1:H3	1-D4	C336	1:B6	1-U1						1-A6
C214	1:G3	1-C4	C337	1:A6	1-T2	IC101	1:B2	1-K6			1-A4
C215	1:J3	1-E4	C338	1:E6	1-S2			1-L7			1-A7
C216	1:J2	1-E5	C339	1:B8	1-T0			1-O7			1-A5
C217	1:L3	1-F4	C340	1:B7	1-T0	IC201	1:H2	1-B4			1-A6
C218	1:H3	1-F5	C341	1:A8	1-U0	IC202	1:K2				1-A5
C219	1:K2	1-G4	C342	1:A8	1-U0			1-G4			1-A6
C220	1:K3	1-G5	C343	1:A9	1-V0			1-I4	P2	1:K7	1-W3
C221	1:K2	1-G5	C344	1:A9	1-V0	IC203	1:G3	1-E2			1-W3

Device	PCB	Circuit	Device	PCB	Circuit	Device	PCB	Circuit	Device	PCB	Circuit
		1-W3	R104	1:C4	1-P3	R260	1:H4	1-F2	R434	1:J6	1-Q9
		1-W3	R105	1:C4	1-Q4	R261	1:K4	1-B0	R437	1:L9	1-V6
		1-W2	R106	1:E5	1-N3	R262	1:J4	1-D1	R441	1:B10	1-W0
		1-W2	R107	1:F5	1-N3	R263	1:H1	1-C7			
		1-W4	R108	1:F5	1-M3	R266	1:L4	1-C1	SHIELD	1:D4	
		1-W4	R112	1:F4	1-L5	R267	1:L5	1-C1	S4	1:B10	1-W0
		1-W4	R113	1:E3	1-N5	R268	1:L5	1-D1			
		1-W3	R114	1:E4	1-M5	R271	1:H4	1-G1	TP1	1:F3	1-I7
		1-W2	R115	1:E4	1-N5	R272	1:H4	1-G2			
		1-W2	R116	1:E3	1-N5	R273	1:H4	1-H3	XF101	1:B5	1-S3
P3	1:L10	1-V9	R117	1:E3	1-M6	R274	1:G4	1-I2	XF102	1:D5	1-O3
		1-V8	R118	1:E3	1-M6	R275	1:H5	1-G0			
		1-V9	R119	1:E3	1-O6	R276	1:G3	1-B2			
		1-V9	R138	1:C2	1-N6	R277	1:K5	1-D0			
		1-V8	R151	1:B2	1-K7	R278	1:L2	1-I5			
		1-V8	R152	1:B2	1-K6	R279	1:H5	1-H0			
		1-V9	RV153	1:B1	1-L6	R280	1:G5	1-H0			
P5	1:B3	1-P8	R155	1:C1	1-N7	R281	1:G5	1-I0			
		1-P8	R156	1:C2	1-N8	R301	1:G6	1-I0			
		1-P6	R157	1:C1	1-N7	R302	1:G6	1-I0			
		1-P7	R158	1:C1	1-N7	R303	1:G6	1-J1			
		1-P6	R159	1:C2	1-P8	R305	1:G7	1-M0			
		1-S6	R160	1:B2	1-L8	R306	1:G6	1-K0			
		1-S7	R161	1:C1	1-M6	R307	1:H6	1-K0			
		1-P7	R194	1:C2	1-O6	R308	1:H7	1-L0			
		1-P7	R195	1:L1	1-A7	R309	1:G7	1-L0			
		1-P7	R196	1:F3	1-J7	R310	1:H7	1-M0			
P6	1:J1	1-H9	R197	1:F3	1-I7	R311	1:J6	1-N1			
		1-H9	R198	1:C2	1-M7	R312	1:J6	1-O1			
		1-C9	R199	1:F3	1-J9	R313	1:H8	1-N0			
		1-C8	R200	1:G2	1-F7	R314	1:F6	1-J0			
		1-H8	R201	1:F2	1-F7	R315	1:F8	1-O0			
		1-C9	R203	1:K1	1-H8	R316	1:J6	1-N1			
		1-C9	R209	1:J1	1-C7	R317	1:G8	1-O0			
		1-H8	R212	1:J2	1-B6	R318	1:F8	1-P0			
		1-C8	R213	1:H1	1-B6	R321	1:D7	1-S1			
		1-H8	R214	1:J1	1-B7	RV324	1:E7	1-S2			
P7	1:K8	1-V7	R217	1:H4		R326	1:E6	1-T2			
		1-V7	R219	1:G1	1-E7	R327	1:J6	1-T2			
			R221	1:H2	1-D7	R328	1:C6	1-V1			
Q101	1:C5	1-P3	RV222	1:J2	1-C6	R329	1:H8	1-L1			
Q102	1:C4	1-Q4	R223	1:H2	1-B5	R330	1:E7	1-R1			
Q103	1:E4	1-N5	R224	1:H2	1-C6	R332	1:C7	1-S0			
Q115	1:C1	1-N6	R225	1:H2	1-B5	R333	1:J6	1-O2			
Q200	1:G2	1-F7	R226	1:H2	1-C5	R336	1:B8	1-T0			
Q201	1:H1	1-B7	R227	1:J2	1-E4	R337	1:E6	1-S2			
Q202	1:H1	1-D7	R228	1:G3	1-C5	R338	1:H6	1-J2			
Q203	1:H2	1-C5	R229	1:H3	1-D4	R339	1:H7	1-J1			
Q204	1:H2	1-C5	R230	1:J3	1-D4	R340	1:H6	1-J2			
Q205	1:J3	1-D4	R231	1:H3	1-D5	R341	1:H6	1-J2			
Q206	1:J3	1-D5	R232	1:J3	1-D5	R342	1:H6	1-I2			
Q207	1:J2	1-E5	R233	1:J2	1-E4	R343	1:H6	1-K1			
Q208	1:J2	1-E5	R234	1:H2	1-E5	R344	1:H8	1-L1			
Q209	1:H2	1-E4	R235	1:J2	1-F5	R345	1:H7	1-L2			
Q210	1:K2	1-F4	R236	1:K3	1-F5	R346	1:H7	1-M1			
Q211	1:J2	1-C7	R237	1:K2	1-F5	R347	1:C6	1-T1			
Q212	1:K5	1-D0	R238	1:K3	1-F4	R348	1:D6	1-U1			
Q213	1:J4	1-D1	R239	1:K2	1-F4	R349	1:C6	1-V1			
Q214	1:J5	1-F1	R240	1:K2	1-G4	R350	1:A8	1-T0			
Q215	1:J5	1-F0	R241	1:K3	1-G5	R351	1:F8	1-P1			
Q300	1:G6	1-J0	R242	1:J3	1-H4	R352	1:E8	1-Q1			
Q301	1:H6	1-K0	R243	1:J3	1-H3	R353	1:F8	1-P1			
Q302	1:H8	1-N0	R244	1:K3	1-I3	R354	1:D6	1-R1			
Q303	1:J6	1-N1	R245	1:H3	1-D3	R418	1:J2	1-G6			
Q304	1:J6	1-O1	R247	1:K4	1-A0	R420	1:J3	1-H4			
Q305	1:H7	1-J1	R248	1:L3	1-H5	R421	1:J3	1-I3			
Q306	1:H6	1-K2	R249	1:J5	1-F0	R422	1:K7	1-L9			
Q307	1:H8	1-M1	R250	1:J4	1-D2	R425	1:L9	1-R9			
Q308	1:H8	1-M2	R251	1:J4	1-E1	R426	1:L8	1-T8			
Q309	1:C6	1-V1	R252	1:J5	1-D0	R427	1:L8	1-T8			
Q401	1:L7	1-N9	R253	1:L5	1-C1	R428	1:K7	1-L9			
Q402	1:L6	1-O9	R255	1:J4	1-E2	R429	1:K6	1-M8			
			R256	1:J4	1-E1	R430	1:L6	1-O9			
R101	1:C4	1-R3	R257	1:J5	1-E0	R431	1:K6	1-O8			
R102	1:C4	1-R4	R258	1:J5	1-F0	R432	1:L6	1-P9			
R103	1:C5	1-Q3	R259	1:K5	1-D0	R433	1:K6	1-P9			



T2000-800 RF PCB (IPN 220-01305-03) - Bottom Side



T2000-800 RF PCB (IPN 220-01305-03) - Top Side

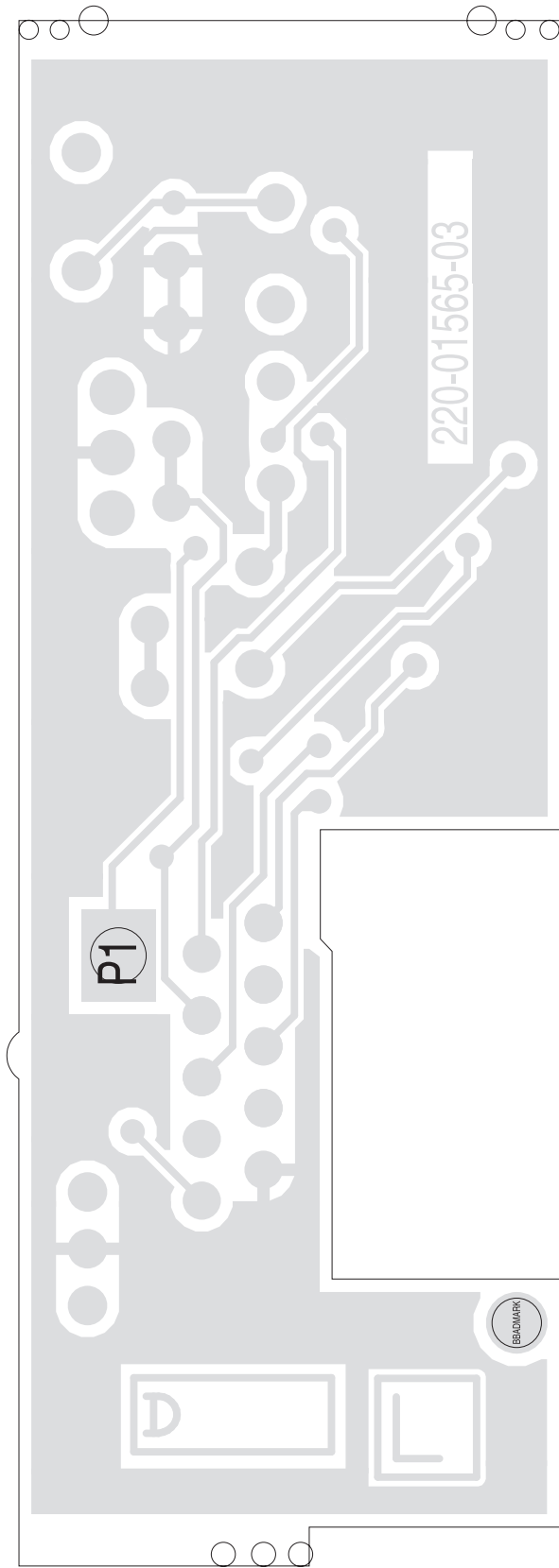


## 7.8 T2000 IF PCB

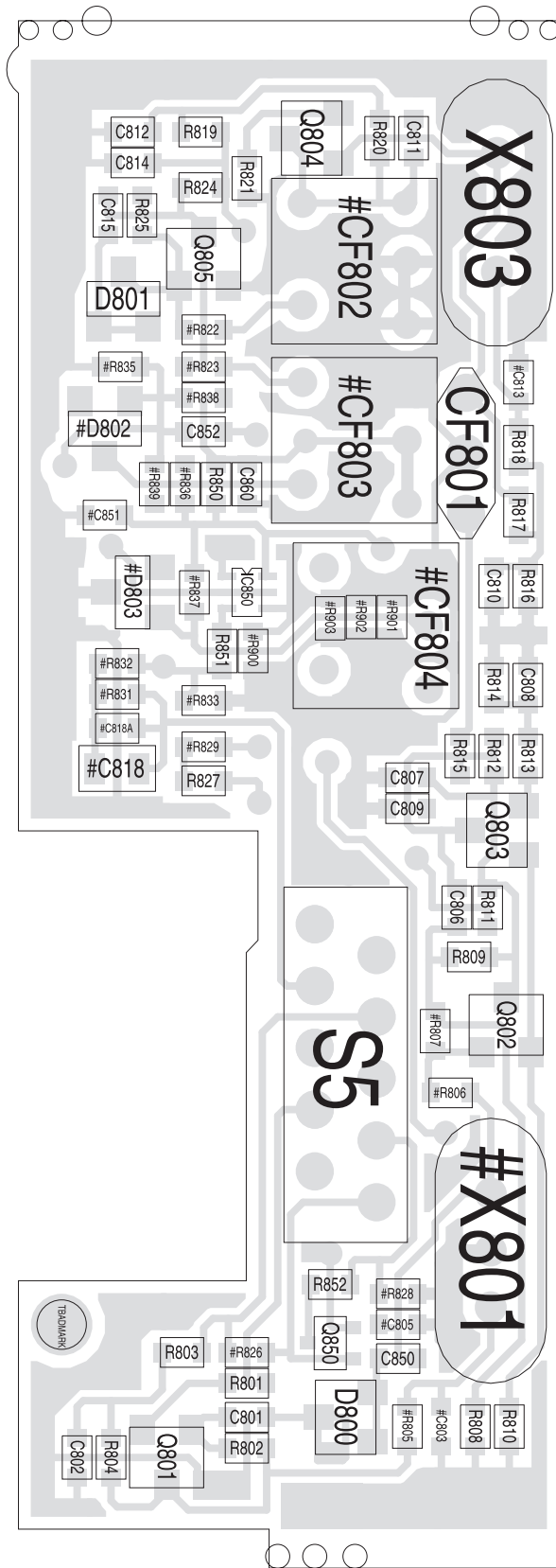
### T2000 IF PCB Grid Reference Index (IPN 220-01565-04)

Device	PCB	Circuit	Device	PCB	Circuit	Device	PCB	Circuit	Device	PCB	Circuit
C801	1:D1	1-Q4	R827	1:B1	1-B6						
C802	1:D1	1-P6	#R828	1:D1	1-C5						
#C803	1:D1	1-P5	#R829	1:B1	1-B5						
#C805	1:D1	1-N5	#R831	1:B1	1-D4						
C806	1:C1	1-L6	#R832	1:B1	1-D3						
C807	1:B1	1-K6	#R833	1:B1	1-D3						
C808	1:B1	1-L4	#R835	1:A1	1-C4						
C809	1:B1	1-K5	#R836	1:A1	1-D5						
C810	1:B1	1-K6	#R837	1:B1	1-D5						
C811	1:A1	1-J6	#R838	1:A1	1-C8						
C812	1:A1	1-H7	#R839	1:A1	1-D7						
#C813	1:A1	1-H4	R850	1:A1	1-E5						
C814	1:A1	1-G7	R851	1:B1	1-D3						
C815	1:A1	1-F6	R852	1:D1	1-B5						
#C818	1:B1	1-C4	#R900	1:B1	1-Q2						
#C818A	1:B1	1-C4	#R901	1:B1	1-Q2						
C850	1:D1	1-M5	#R902	1:B1	1-R2						
#C851	1:A1	1-D4	#R903	1:B1	1-R2						
C852	1:A1	1-C7									
C860	1:A1	1-E7	S5	1:C1	1-J0						
CF801	1:A1	1-K5									
#CF802	1:A1	1-G5	#X801	1:D1	1-P5						
#CF803	1:A1	1-E7	X803	1:A1	1-H6						
#CF804	1:B1	1-D6									
D800	1:D1	1-M4									
D800	1:D1	1-N4									
D801	1:A1	1-F6									
D801	1:A1	1-G6									
#D802	1:A1	1-D7									
#D803	1:B1	1-D4									
IC850	1:B1	1-E3									
IC850	1:B1	1-E4									
P1	2:C1	1-E5									
Q801	1:D1	1-Q5									
Q802	1:C1	1-M5									
Q803	1:B1	1-L5									
Q804	1:A1	1-H5									
Q805	1:A1	1-F5									
Q850	1:D1	1-B4									
R801	1:D1	1-Q5									
R802	1:D1	1-Q5									
R803	1:D1	1-Q8									
R804	1:D1	1-Q6									
#R805	1:D1	1-P5									
#R806	1:C1	1-M5									
#R807	1:C1	1-M6									
R808	1:D1	1-M6									
R809	1:C1	1-M6									
R810	1:D1	1-M4									
R811	1:C1	1-L8									
R812	1:B1	1-L6									
R813	1:B1	1-L5									
R814	1:B1	1-L4									
R815	1:B1	1-K5									
R816	1:B1	1-K6									
R817	1:A1	1-J6									
R818	1:A1	1-J6									
R819	1:A1	1-H8									
R820	1:A1	1-H7									
R821	1:A1	1-H4									
#R822	1:A1	1-G5									
#R823	1:A1	1-E7									
R824	1:A1	1-F8									
R825	1:A1	1-F6									
#R826	1:D1	1-D8									





**T2000 IF PCB (IPN 220-01565-04) - Bottom Side**



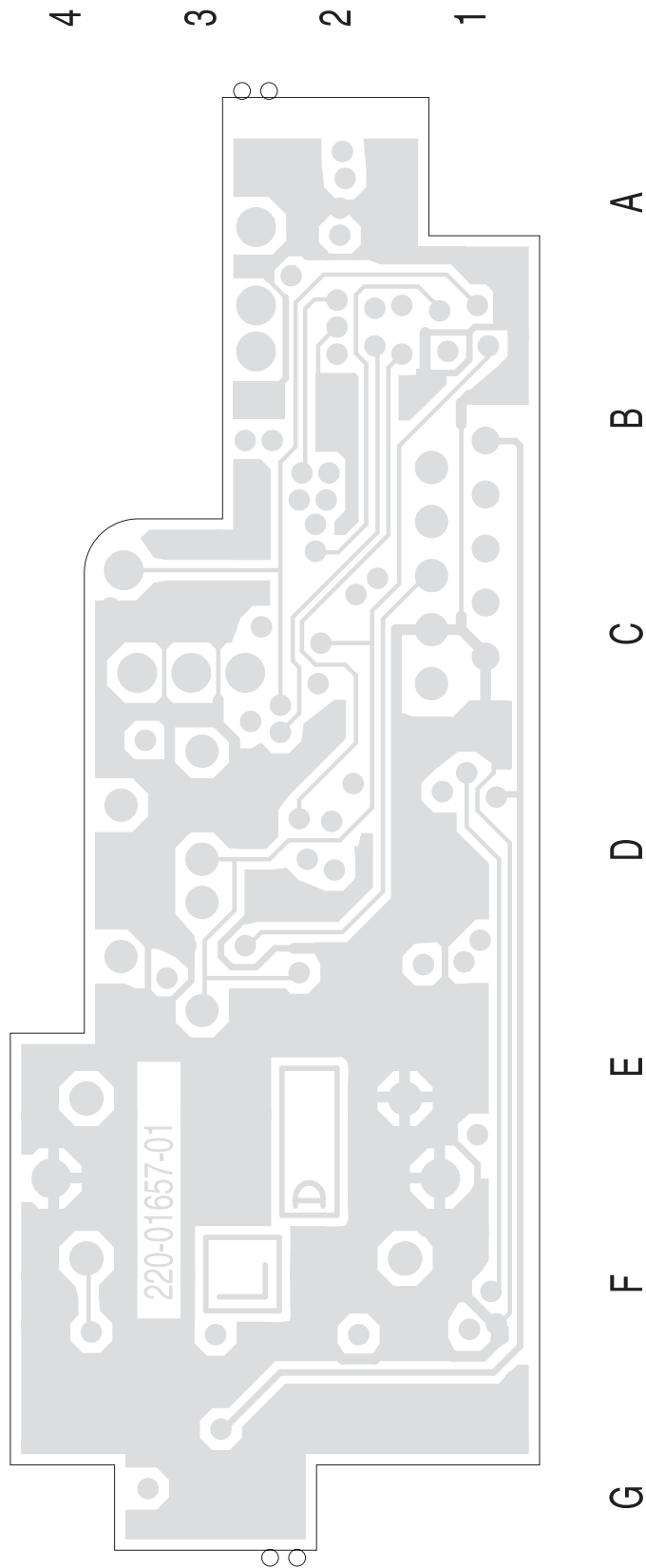
T2000 IF PCB (IPN 220-01565-04) - Top Side

## 7.9 T2000 TCXO/Tx Audio PCB

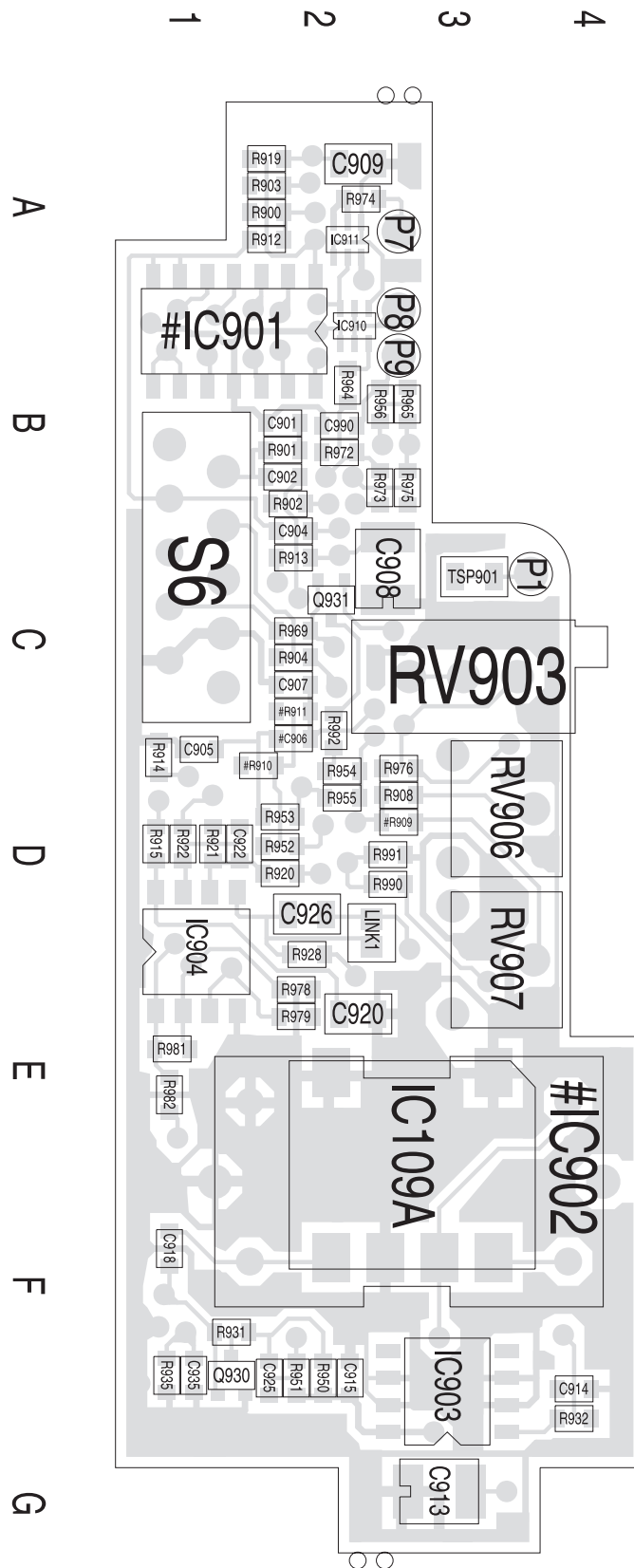
### T2000 TCXO/Tx Audio Grid Reference Index (IPN 220-01657-01)

Device	PCB	Circuit	Device	PCB	Circuit	Device	PCB	Circuit	Device	PCB	Circuit
C901	1:B3	1-C6	R954	1:D4	1-G9						
C902	1:B3	1-D6	R955	1:D4	1-H9						
C904	1:C4	1-I8	R956	1:B4	1-E9						
C905	1:D3	1-H7	R964	1:B4	1-D3						
#C906	1:D4	1-H7	R965	1:B4	1-F9						
C907	1:C4	1-I7	R969	1:C4	1-B5						
C908	1:C4	1-M7	R972	1:B4	1-D3						
C909	1:A4	1-D1	R973	1:B4	1-D3						
C913	1:G4	1-F4	R974	1:A4	1-D3						
C914	1:G4	1-F4	R975	1:B4	1-E3						
C915	1:F4	1-J4	R976	1:D4	1-E4						
C918	1:F3	1-I3	R978	1:E4	1-E3						
C920	1:E4	1-O7	R979	1:E4	1-E4						
C922	1:D3	1-G1	R981	1:E3	1-F3						
C925	1:F3	1-K4	R982	1:E3	1-F3						
C926	1:D4	1-D2	R990	1:D4	1-E1						
C935	1:F3	1-J2	R991	1:D4	1-E1						
C990	1:B4	1-E8	R992	1:C4	1-F9						
			RV903	1:C4	1-D4						
IC109A	1:E4	1-H4	RV906	1:D4	1-F8						
#IC901	1:B3	1-M7	RV907	1:E4	1-F7						
#IC901	1:B3	1-I7									
#IC901	1:B3	1-D7	S6	1:C3	1-L4						
#IC901	1:B3	1-D1									
#IC901	1:B3	1-H9	TSP901	1:C4	1-I8						
#IC902	1:F4	1-G4									
IC903	1:G4	1-C4									
IC904	1:E3	1-O7									
IC904	1:E3	1-E3									
IC904	1:E3	1-G1									
IC910	1:B4	1-E2									
IC910	1:B4	1-C3									
IC911	1:A4	1-D2									
IC911	1:A4	1-D3									
LINK1	1:D4	1-D2									
P1	1:C4	1-I8									
P7	1:A4	1-D3									
P8	1:B4	1-B3									
P9	1:B4	1-E9									
Q930	1:F3	1-J3									
Q931	1:C4	1-F9									
R900	1:A3	1-E6									
R901	1:B3	1-C7									
R902	1:B3	1-D7									
R903	1:A3	1-E7									
R904	1:C4	1-D9									
R908	1:D4	1-G8									
#R909	1:D4	1-G7									
#R910	1:D3	1-H7									
#R911	1:C4	1-H7									
R912	1:A3	1-K6									
R913	1:C4	1-M8									
R914	1:D3	1-J1									
R915	1:D2	1-O8									
R919	1:A3	1-D1									
R920	1:D3	1-F1									
R921	1:D3	1-G1									
R922	1:D3	1-H2									
R928	1:E4	1-E1									
R931	1:F3	1-J4									
R932	1:G4	1-D4									
R935	1:F3	1-K2									
R950	1:F4	1-J4									
R951	1:F4	1-K4									
R952	1:D3	1-I8									
R953	1:D3	1-H8									





T2000 TCXO/Tx Audio PCB (IPN 220-01657-01) - Bottom Side



T2000 TCXO/Tx Audio PCB (IPN 220-01657-01) - Top Side



# 7.10 T2010 & T2015 HC05 Logic PCB

## T2010 & T2015 HC05 Logic Parts List (IPN 220-01377-01)

### Parts List Amendments

Ref	Var	IPN	Description	Ref	Var	IPN	Description
C500		016-08470-01	CAP ELECT SMD 6*4MM 47U 16V	C633		016-08470-01	CAP ELECT SMD 6*4MM 47U 16V
C501		015-23680-08	CAP CER 0805 CHIP 680P 10% X7R 50V	C634		015-24470-08	CAP CER 0805 CHIP 4N7 10% X7R 50V
C501A		018-14100-00	CAP 0603 CHIP 1N 50V X7R +-10%	C635		015-06100-08	CAP CER 1206 CHIP 100N 10% X7R 50V
C502		018-15100-00	CAP 0603 CHIP 10N 50V X7R +-10%	C636		015-06100-08	CAP CER 1206 CHIP 100N 10% X7R 50V
C503		018-15100-00	CAP 0603 CHIP 10N 50V X7R +-10%	C637		018-11470-00	CAP 0603 CHIP 4P7 50V NPO +-0.25P
C504		015-06100-08	CAP CER 1206 CHIP 100N 10% X7R 50V	C638		015-06100-08	CAP CER 1206 CHIP 100N 10% X7R 50V
C505		015-06100-08	CAP CER 1206 CHIP 100N 10% X7R 50V	C639		016-08470-01	CAP ELECT SMD 6*4MM 47U 16V
C506		018-12220-00	CAP 0603 CHIP 22P 50V NPO +-5%	C640		016-08470-01	CAP ELECT SMD 6*4MM 47U 16V
C507		018-12220-00	CAP 0603 CHIP 22P 50V NPO +-5%	C641		018-14100-00	CAP 0603 CHIP 1N 50V X7R +-10%
C509		018-14100-00	CAP 0603 CHIP 1N 50V X7R +-10%	C642		015-23220-01	CAP CER 0805 CHIP 220P 5% NPO 50V
C514		018-12220-00	CAP 0603 CHIP 22P 50V NPO +-5%	C643		015-25150-08	CAP CER 0805 CHIP 15N 10% X7R 50V
C515		018-12220-00	CAP 0603 CHIP 22P 50V NPO +-5%	C644		015-25150-08	CAP CER 0805 CHIP 15N 10% X7R 50V
C517		015-23680-08	CAP CER 0805 CHIP 680P 10% X7R 50V	C645		018-13150-00	CAP 0603 CHIP 150P 50V NPO +-5%
C518		015-06100-08	CAP CER 1206 CHIP 100N 10% X7R 50V	C646		014-07470-00	CAP TANT CHIP 4U7 3.5 X 2.8MM 267 SERIES
C519		018-13150-00	CAP 0603 CHIP 150P 50V NPO +-5%	C647		015-06100-08	CAP CER 1206 CHIP 100N 10% X7R 50V
C520		015-25220-08	CAP CER 0805 CHIP 22N 10% X7R 50V	C648		016-08470-01	CAP ELECT SMD 6*4MM 47U 16V
C521		015-06100-08	CAP CER 1206 CHIP 100N 10% X7R 50V	C650		018-13150-00	CAP 0603 CHIP 150P 50V NPO +-5%
C522		018-13150-00	CAP 0603 CHIP 150P 50V NPO +-5%	C651		018-13150-00	CAP 0603 CHIP 150P 50V NPO +-5%
C524		016-08470-01	CAP ELECT SMD 6*4MM 47U 16V	#C700		015-06100-08	CAP CER 1206 CHIP 100N 10% X7R 50V
C525		018-13150-00	CAP 0603 CHIP 150P 50V NPO +-5%	C702		015-06100-08	CAP CER 1206 CHIP 100N 10% X7R 50V
C526		018-13150-00	CAP 0603 CHIP 150P 50V NPO +-5%	#C703		015-06100-08	CAP CER 1206 CHIP 100N 10% X7R 50V
C527		018-13150-00	CAP 0603 CHIP 150P 50V NPO +-5%	C705		015-06100-08	CAP CER 1206 CHIP 100N 10% X7R 50V
C528		018-13150-00	CAP 0603 CHIP 150P 50V NPO +-5%				
C530		018-13150-00	CAP 0603 CHIP 150P 50V NPO +-5%	D500		001-10000-70	(S) DIODE SMD BAV70 DUAL SWITCH SOT-23 C
C540		018-13150-00	CAP 0603 CHIP 150P 50V NPO +-5%				
C541		018-13150-00	CAP 0603 CHIP 150P 50V NPO +-5%	IC501		002-10936-60	(LS) IC SMD ST93C66CM6 4K EEPROM SER MI
C542		018-13100-00	CAP 0603 CHIP 100P 50V NPO +-5%	IC504		002-10340-64	(S) IC SMD MC34064 LO VOLT SENSE
C543		018-13100-00	CAP 0603 CHIP 100P 50V NPO +-5%	IC505		002-26870-55	(LSH) IC 68HC705C9 MPU (T201X 2.05) MAS
C544		018-13100-00	CAP 0603 CHIP 100P 50V NPO +-5%	IC506		002-10140-21	(S) IC MC14021BDR2 8BIT SHIFT REGSTR.SO
C545		018-13100-00	CAP 0603 CHIP 100P 50V NPO +-5%	IC507		002-10140-21	(S) IC MC14021BDR2 8BIT SHIFT REGSTR.SO
C546		015-24330-08	CAP CER 0805 CHIP 3N3 10% X7R 50V	IC509		002-74905-95	(S) IC SMD 74HC595 SHIFT REGISTER
C600		015-25150-08	CAP CER 0805 CHIP 15N 10% X7R 50V	#IC510		002-74901-32	(S) IC SMD 74HC132 HCMOS QUAD SCHMT SO
C601		014-07470-00	CAP TANT CHIP 4U7 3.5 X 2.8MM 267 SERIES	IC511		002-74901-32	(S) IC SMD 74HC132 HCMOS QUAD SCHMT SO-
C602		018-12820-00	CAP 0603 CHIP 82P 50V NPO +-5%	IC513		002-10078-08	(S) IC SMD 78L08 8V REG SO8
C603		015-23220-01	CAP CER 0805 CHIP 220P 5% NPO 50V	IC601		002-10003-24	(S) IC SMD 324 QUAD OP AMP SO14
C604		014-07470-00	CAP TANT CHIP 4U7 3.5 X 2.8MM 267 SERIES	IC602		002-10003-24	(S) IC SMD 324 QUAD OP AMP SO14
C605		014-07470-00	CAP TANT CHIP 4U7 3.5 X 2.8MM 267 SERIES	IC603		002-10003-24	(S) IC SMD 324 QUAD OP AMP SO14
C606		015-06100-08	CAP CER 1206 CHIP 100N 10% X7R 50V	IC604		002-10003-58	(S) IC SMD LM358 DUAL OP AMP
C607		015-06100-08	CAP CER 1206 CHIP 100N 10% X7R 50V	IC614		002-10040-53	(S) IC 4053 SMD TRIPLE 2CH MULTI-PLEXR
C608		018-15100-00	CAP 0603 CHIP 10N 50V X7R +-10%				
C609		018-12470-00	CAP 0603 CHIP 47P 50V NPO +-5%	L501		056-10330-00	IND FXD SMD 330NH 3.2*2.5*1.6 SIEMENS SM
C610		014-07470-00	CAP TANT CHIP 4U7 3.5 X 2.8MM 267 SERIES				
C611		018-13100-00	CAP 0603 CHIP 100P 50V NPO +-5%	P1		240-10000-01	CONN SMD 24WAY (PLUG)
C612		014-07470-00	CAP TANT CHIP 4U7 3.5 X 2.8MM 267 SERIES	P2		240-10000-01	CONN SMD 24WAY (PLUG)
C613		015-24470-08	CAP CER 0805 CHIP 4N7 10% X7R 50V				
C614		015-25150-08	CAP CER 0805 CHIP 15N 10% X7R 50V	Q501		000-10084-81	(S) XSTR SMD BC848BW NPN SOT-323 SMALL S
C615		015-25150-08	CAP CER 0805 CHIP 15N 10% X7R 50V	Q502		000-10084-81	(S) XSTR SMD BC848BW NPN SOT-323 SMALL S
C616		015-25150-08	CAP CER 0805 CHIP 15N 10% X7R 50V	Q503		000-10008-69	(S) XSTR SMD BC869 PNP 1W 2A SOT-89
C617		018-15100-00	CAP 0603 CHIP 10N 50V X7R +-10%	Q504		000-10084-81	(S) XSTR SMD BC848BW NPN SOT-323 SMALL S
C618		018-15100-00	CAP 0603 CHIP 10N 50V X7R +-10%	Q505		000-10085-71	(S) XSTR SMD BC857BW PNP SOT-323 SMALL S
C619		018-15100-00	CAP 0603 CHIP 10N 50V X7R +-10%	Q506		000-10085-71	(S) XSTR SMD BC857BW PNP SOT-323 SMALL S
C620		018-15100-00	CAP 0603 CHIP 10N 50V X7R +-10%	Q507		000-10003-12	(S) XSTR SMD BFR31 N JFET SOT-23
C621		018-15100-00	CAP 0603 CHIP 10N 50V X7R +-10%	Q508		000-10085-71	(S) XSTR SMD BC857BW PNP SOT-323 SMALL S
C622		018-15100-00	CAP 0603 CHIP 10N 50V X7R +-10%	Q509		000-10085-71	(S) XSTR SMD BC857BW PNP SOT-323 SMALL S
C623		015-06100-08	CAP CER 1206 CHIP 100N 10% X7R 50V	Q510		000-10084-81	(S) XSTR SMD BC848BW NPN SOT-323 SMALL S
C624		018-15100-00	CAP 0603 CHIP 10N 50V X7R +-10%	Q520		000-10084-81	(S) XSTR SMD BC848BW NPN SOT-323 SMALL S
C625		018-15100-00	CAP 0603 CHIP 10N 50V X7R +-10%	Q601		000-10084-81	(S) XSTR SMD BC848BW NPN SOT-323 SMALL S
C626		014-07470-00	CAP TANT CHIP 4U7 3.5 X 2.8MM 267 SERIES	Q602		000-10084-81	(S) XSTR SMD BC848BW NPN SOT-323 SMALL S
C627		015-06100-08	CAP CER 1206 CHIP 100N 10% X7R 50V	Q603		000-10084-81	(S) XSTR SMD BC848BW NPN SOT-323 SMALL S
C628		018-15100-00	CAP 0603 CHIP 10N 50V X7R +-10%	Q604		000-10084-81	(S) XSTR SMD BC848BW NPN SOT-323 SMALL S
C629		015-23220-01	CAP CER 0805 CHIP 220P 5% NPO 50V	Q605		000-10085-71	(S) XSTR SMD BC857BW PNP SOT-323 SMALL S
#C630		014-07470-00	CAP TANT CHIP 4U7 3.5 X 2.8MM 267 SERIE	Q606		000-10084-81	(S) XSTR SMD BC848BW NPN SOT-323 SMALL S
C630		015-25150-08	CAP CER 0805 CHIP 15N 10% X7R 50V	Q607		000-10084-81	(S) XSTR SMD BC848BW NPN SOT-323 SMALL S
C632		014-07470-00	CAP TANT CHIP 4U7 3.5 X 2.8MM 267 SERIES	Q608		000-10084-81	(S) XSTR SMD BC848BW NPN SOT-323 SMALL S

Ref	Var	IPN	Description	Ref	Var	IPN	Description
R501		038-15470-00	RES 0603 CHIP 47K 1/16W +-5%	R618		038-17100-00	RES 0603 CHIP 1M 1/16W +-5%
R502		038-15470-00	RES 0603 CHIP 47K 1/16W +-5%	R619		038-15100-00	RES 0603 CHIP 10K 1/16W +-5%
R503		038-14220-00	RES 0603 CHIP 2K2 1/16W +-5%	R620		036-15270-00	RES M/F 0805 CHIP 27K 5%
R504		038-13220-00	RES 0603 CHIP 220E 1/16W +-5%	R621		036-16390-00	RES M/F 0805 CHIP 390K 5%
R505		036-16150-00	RES M/F 0805 CHIP 150K 5%	R622		038-15100-00	RES 0603 CHIP 10K 1/16W +-5%
R506		038-15100-00	RES 0603 CHIP 10K 1/16W +-5%	R623		038-14680-00	RES 0603 CHIP 6K8 1/16W +-5%
R507		038-14470-00	RES 0603 CHIP 4K7 1/16W +-5%	R624		038-15100-00	RES 0603 CHIP 10K 1/16W +-5%
RV507		042-15500-01	RES PRESET SMD 50K +-25% 4X4.5X2.5MM 0.	R625		038-14680-00	RES 0603 CHIP 10K 1/16W +-5%
R508		038-16100-00	RES 0603 CHIP 100K 1/16W +-5%	R626		036-15270-00	RES M/F 0805 CHIP 27K 5%
R509		038-14220-00	RES 0603 CHIP 2K2 1/16W +-5%	R627		036-16390-00	RES M/F 0805 CHIP 390K 5%
R510		036-18100-00	RES M/F 0805 CHIP 10M 10%	R628		038-15100-00	RES 0603 CHIP 10K 1/16W +-5%
R511		038-16470-00	RES 0603 CHIP 470K 1/16W +-5%	R629		038-15270-00	RES 0603 CHIP 27K 1/16W +-5%
R512		038-16100-00	RES 0603 CHIP 100K 1/16W +-5%	R630		038-17100-00	RES 0603 CHIP 1M 1/16W +-5%
R513		038-10000-00	RES 0603 CHIP ZERO OHM 1/16W +-5%	R631		038-14100-00	RES 0603 CHIP 1K0 1/16W +-5%
R514		038-16100-00	RES 0603 CHIP 100K 1/16W +-5%	R632		036-16390-00	RES M/F 0805 CHIP 390K 5%
R515		038-16100-00	RES 0603 CHIP 100K 1/16W +-5%	R633		038-15100-00	RES 0603 CHIP 10K 1/16W +-5%
R516		038-15470-00	RES 0603 CHIP 47K 1/16W +-5%	R634		038-14680-00	RES 0603 CHIP 6K8 1/16W +-5%
R518		038-14100-00	RES 0603 CHIP 1K0 1/16W +-5%	R635		038-16220-00	RES 0603 CHIP 220K 1/16W +-5%
R519		038-14100-00	RES 0603 CHIP 1K0 1/16W +-5%	R636		038-16100-00	RES 0603 CHIP 100K 1/16W +-5%
R520		038-15470-00	RES 0603 CHIP 47K 1/16W +-5%	R637		038-16100-00	RES 0603 CHIP 10K 1/16W +-5%
R521		038-15100-00	RES 0603 CHIP 10K 1/16W +-5%	R638		038-15100-00	RES 0603 CHIP 10K 1/16W +-5%
R522		038-14470-00	RES 0603 CHIP 4K7 1/16W +-5%	R639		038-14220-00	RES 0603 CHIP 2K2 1/16W +-5%
R523		036-16470-00	RES M/F 0805 CHIP 470K 5%	R640		038-17100-00	RES 0603 CHIP 1M 1/16W +-5%
R524		038-16100-00	RES 0603 CHIP 100K 1/16W +-5%	R641		036-16150-00	RES M/F 0805 CHIP 150K 5%
R525		038-15470-00	RES 0603 CHIP 47K 1/16W +-5%	R642		038-16100-00	RES 0603 CHIP 100K 1/16W +-5%
R526		038-15100-00	RES 0603 CHIP 10K 1/16W +-5%	R643		036-16330-00	RES M/F 0805 CHIP 330K 5%
R527		038-15470-00	RES 0603 CHIP 47K 1/16W +-5%	R644		038-17100-00	RES 0603 CHIP 1M 1/16W +-5%
R528		038-10000-00	RES 0603 CHIP ZERO OHM 1/16W +-5%	R645		038-16100-00	RES 0603 CHIP 100K 1/16W +-5%
R529		038-15470-00	RES 0603 CHIP 47K 1/16W +-5%	R646		036-16330-00	RES M/F 0805 CHIP 330K 5%
R530		038-14470-00	RES 0603 CHIP 4K7 1/16W +-5%	R647		038-14220-00	RES 0603 CHIP 2K2 1/16W +-5%
R531		036-18100-00	RES M/F 0805 CHIP 10M 10%	R648		038-16220-00	RES 0603 CHIP 220K 1/16W +-5%
R532		038-15470-00	RES 0603 CHIP 47K 1/16W +-5%	R649		038-17100-00	RES 0603 CHIP 1M 1/16W +-5%
R533		038-15470-00	RES 0603 CHIP 47K 1/16W +-5%	R650		038-14100-00	RES 0603 CHIP 1K0 1/16W +-5%
R534		038-15470-00	RES 0603 CHIP 47K 1/16W +-5%	R651		038-15150-00	RES 0603 CHIP 15K 1/16W +-5%
R535		036-14270-00	RES M/F 0805 CHIP 2K7 5%	R652		038-14470-00	RES 0603 CHIP 4K7 1/16W +-5%
R536		038-15470-00	RES 0603 CHIP 47K 1/16W +-5%	R653		036-14270-00	RES M/F 0805 CHIP 2K7 5%
R537		038-15100-00	RES 0603 CHIP 10K 1/16W +-5%	R654		038-13220-00	RES 0603 CHIP 220E 1/16W +-5%
R538		038-15100-00	RES 0603 CHIP 10K 1/16W +-5%	R655		038-14220-00	RES 0603 CHIP 2K2 1/16W +-5%
R539		038-15100-00	RES 0603 CHIP 10K 1/16W +-5%	R656		038-14220-00	RES 0603 CHIP 2K2 1/16W +-5%
R540		038-15100-00	RES 0603 CHIP 10K 1/16W +-5%	R657		036-14120-00	RES M/F 0805 CHIP 1K2 5%
R541		038-15100-00	RES 0603 CHIP 10K 1/16W +-5%	R658		036-16150-00	RES M/F 0805 CHIP 150K 5%
R542		038-15470-00	RES 0603 CHIP 47K 1/16W +-5%	R659		036-14270-00	RES M/F 0805 CHIP 2K7 5%
R543		038-14220-00	RES 0603 CHIP 2K2 1/16W +-5%	R660		038-15100-00	RES 0603 CHIP 10K 1/16W +-5%
R544		038-15100-00	RES 0603 CHIP 10K 1/16W +-5%	R661		038-15470-00	RES 0603 CHIP 47K 1/16W +-5%
R546		038-15100-00	RES 0603 CHIP 10K 1/16W +-5%	R662		038-14100-00	RES 0603 CHIP 1K0 1/16W +-5%
R547		038-15470-00	RES 0603 CHIP 47K 1/16W +-5%	R663		038-15470-00	RES 0603 CHIP 47K 1/16W +-5%
R568		038-14100-00	RES 0603 CHIP 1K0 1/16W +-5%	R664		036-15220-00	RES M/F 0805 CHIP 22K 5%
R569		038-16100-00	RES 0603 CHIP 100K 1/16W +-5%	R665		036-16470-00	RES M/F 0805 CHIP 470K 5%
R570		038-15470-00	RES 0603 CHIP 47K 1/16W +-5%	R666		036-16150-00	RES M/F 0805 CHIP 150K 5%
R571		038-15470-00	RES 0603 CHIP 47K 1/16W +-5%	R667		038-17100-00	RES 0603 CHIP 1M 1/16W +-5%
R572		038-15470-00	RES 0603 CHIP 47K 1/16W +-5%	R668		038-16470-00	RES 0603 CHIP 470K 1/16W +-5%
R574		038-12100-00	RES 0603 CHIP 10E 1/16W +-5%	R669		036-14180-00	RES M/F 0805 CHIP 1K8 5%
R575		038-15100-00	RES 0603 CHIP 10K 1/16W +-5%	R670		038-15100-00	RES 0603 CHIP 10K 1/16W +-5%
R578		038-16100-00	RES 0603 CHIP 100K 1/16W +-5%	R671		038-14470-00	RES 0603 CHIP 4K7 1/16W +-5%
R579		038-14100-00	RES 0603 CHIP 1K0 1/16W +-5%	R672		038-15100-00	RES 0603 CHIP 10K 1/16W +-5%
R580		036-18100-00	RES M/F 0805 CHIP 10M 10%	R673		038-15100-00	RES 0603 CHIP 10K 1/16W +-5%
R581		036-15220-00	RES M/F 0805 CHIP 22K 5%	R674		038-15100-00	RES 0603 CHIP 10K 1/16W +-5%
R582		038-16220-00	RES 0603 CHIP 220K 1/16W +-5%	R675		038-15470-00	RES 0603 CHIP 47K 1/16W +-5%
R583		038-14100-00	RES 0603 CHIP 1K0 1/16W +-5%	R676		038-15470-00	RES 0603 CHIP 47K 1/16W +-5%
R584		038-15150-00	RES 0603 CHIP 15K 1/16W +-5%	R677		038-15100-00	RES 0603 CHIP 10K 1/16W +-5%
R585		036-13680-00	RES M/F 0805 CHIP 680E 5%	R678		038-16100-00	RES 0603 CHIP 100K 1/16W +-5%
R586		036-13680-00	RES M/F 0805 CHIP 680E 5%	R679		038-15470-00	RES 0603 CHIP 47K 1/16W +-5%
R592		038-16100-00	RES 0603 CHIP 100K 1/16W +-5%	R680		036-14270-00	RES M/F 0805 CHIP 2K7 5%
R593		038-16100-00	RES 0603 CHIP 100K 1/16W +-5%	R681		038-15100-00	RES 0603 CHIP 10K 1/16W +-5%
#R595		038-15100-00	RES 0603 CHIP 10K 1/16W +-5%	R682		036-14180-00	RES M/F 0805 CHIP 1K8 5%
R595		038-16100-00	RES 0603 CHIP 100K 1/16W +-5%	R683		038-15100-00	RES 0603 CHIP 10K 1/16W +-5%
#R596		036-15390-00	RES M/F 0805 CHIP 39K 5%	R684		036-13680-00	RES M/F 0805 CHIP 680E 5%
R599		038-10000-00	RES 0603 CHIP ZERO OHM 1/16W +-5%	R685		038-10000-00	RES 0603 CHIP ZERO OHM 1/16W +-5%
R600		038-14220-00	RES 0603 CHIP 2K2 1/16W +-5%	R686		038-15470-00	RES 0603 CHIP 47K 1/16W +-5%
R601		036-15820-00	RES M/F 0805 CHIP 82K 5%	R687		038-15100-00	RES 0603 CHIP 10K 1/16W +-5%
R602		036-14820-00	RES M/F 0805 CHIP 8K2 5%	R688		038-15100-00	RES 0603 CHIP 10K 1/16W +-5%
R603		038-16100-00	RES 0603 CHIP 100K 1/16W +-5%	R689		036-15220-00	RES M/F 0805 CHIP 22K 5%
R604		038-16220-00	RES 0603 CHIP 220K 1/16W +-5%	R690		036-15220-00	RES M/F 0805 CHIP 22K 5%
R605		038-16220-00	RES 0603 CHIP 220K 1/16W +-5%	R691		038-14220-00	RES 0603 CHIP 2K2 1/16W +-5%
R606		038-17100-00	RES 0603 CHIP 1M 1/16W +-5%	R692		036-15220-00	RES M/F 0805 CHIP 22K 5%
R607		038-16100-00	RES 0603 CHIP 100K 1/16W +-5%	R693		038-14100-00	RES 0603 CHIP 1K0 1/16W +-5%
R608		036-15220-00	RES M/F 0805 CHIP 22K 5%	R694		038-14100-00	RES 0603 CHIP 1K0 1/16W +-5%
R609		038-16220-00	RES 0603 CHIP 220K 1/16W +-5%	R695		038-14100-00	RES 0603 CHIP 1K0 1/16W +-5%
R610		038-14470-00	RES 0603 CHIP 4K7 1/16W +-5%	R696		038-14100-00	RES 0603 CHIP 1K0 1/16W +-5%
R611		038-16220-00	RES 0603 CHIP 220K 1/16W +-5%	R697		038-14100-00	RES 0603 CHIP 1K0 1/16W +-5%
R612		038-13220-00	RES 0603 CHIP 220E 1/16W +-5%	R698		038-14100-00	RES 0603 CHIP 1K0 1/16W +-5%
R613		038-16100-00	RES 0603 CHIP 100K 1/16W +-5%	R699		038-14100-00	RES 0603 CHIP 1K0 1/16W +-5%
R614		038-16220-00	RES 0603 CHIP 220K 1/16W +-5%	R700		038-15100-00	RES 0603 CHIP 10K 1/16W +-5%
R615		038-14220-00	RES 0603 CHIP 2K2 1/16W +-5%	R701		038-15100-00	RES 0603 CHIP 10K 1/16W +-5%
R616		038-14220-00	RES 0603 CHIP 2K2 1/16W +-5%	R702		038-15100-00	RES 0603 CHIP 10K 1/16W +-5%
R617		038-14680-00	RES 0603 CHIP 6K8 1/16W +-5%	R703		038-15100-00	RES 0603 CHIP 10K 1/16W +-5%

Ref	Var	IPN	Description	Ref	Var	IPN	Description
R704		038-15100-00	RES 0603 CHIP 10K 1/16W +-5%				
R705		038-15100-00	RES 0603 CHIP 10K 1/16W +-5%				
R706		038-15100-00	RES 0603 CHIP 10K 1/16W +-5%				
R707		038-15100-00	RES 0603 CHIP 10K 1/16W +-5%				
R708		038-10000-00	RES 0603 CHIP ZERO OHM 1/16W +-5%				
#R710		038-10000-00	RES 0603 CHIP ZERO OHM 1/16W +-5%				
#R712		038-10000-00	RES 0603 CHIP ZERO OHM 1/16W +-5%				
#R713		038-10000-00	RES 0603 CHIP ZERO OHM 1/16W +-5%				
#R714		038-10000-00	RES 0603 CHIP ZERO OHM 1/16W +-5%				
R720		038-10000-00	RES 0603 CHIP ZERO OHM 1/16W +-5%				
R721		038-15470-00	RES 0603 CHIP 47K 1/16W +-5%				
#R722		036-16330-00	RES M/F 0805 CHIP 330K 5%				
#R723		038-16220-00	RES 0603 CHIP 220K 1/16W +-5%				
R724		038-15270-00	RES 0603 CHIP 27K 1/16W +-5%				
R725		038-15100-00	RES 0603 CHIP 10K 1/16W +-5%				
R726		038-15270-00	RES 0603 CHIP 27K 1/16W +-5%				
R727		038-15470-00	RES 0603 CHIP 47K 1/16W +-5%				
#SPEC1		038-10000-00	RES 0603 CHIP ZERO OHM 1/16W +-5%				
S1		240-10000-07	CONN SMD SKT 16WAY 2ROW MICROMATCH				
S2		240-10000-06	CONN SMD SKT 12WAY 2ROW MICROMATCH				
S8		240-10000-07	CONN SMD SKT 16WAY 2ROW MICROMATCH				
S13		240-10000-06	CONN SMD SKT 12WAY 2ROW MICROMATCH				
S14		240-10000-07	CONN SMD SKT 16WAY 2ROW MICROMATCH				
S15		240-10000-07	CONN SMD SKT 16WAY 2ROW MICROMATCH				
SK505		240-04020-42	SKT 44 PIN SMD PLCC CHIP CARRIER				
TP614		005-10000-10	TEST POINT SMD 0805 2.0 X 1.25 X 1.45				
X501		274-01070-00	XTAL 4.000MHZ HC49U/S C/W TEFLON INSULAT				

## T2010 & T2015 HC05 Logic Mechanical & Miscellaneous Parts

IPN	Description	IPN	Description
219-02584-00	CABLE ASSEMBLY T2000 PWR CABLE		
220-01377-01	(L) PCB T2010/15 LOGIC HC05 COMMON PLATFOR		
240-00020-11	PLUG MICROPHONE BT SR937		
240-00100-13	PLUG COAX BNC CORD MTG CRIMP URM76		
240-02010-75	SKT RECEP TL SML 172775-1		
240-04021-63	CONN 2WAY 24AWG (BLACK) INLINE HERMAPHRODITIC PACK LOOSE IN INSTALLATION Kit		
252-00010-37	MIC AWC DYNAMIC 600E 6WAY M095D TINSEL SHLD'D		
252-00010-49	MIC CLIP (SPRING STEEL CONTACT)		
265-00010-60	FUSE 10A 12V AUTOMOTIVE STAPLE TYPE		
303-23134-02	COVER TOP A1M2504 T2000 PNTD CMPLT		
303-30062-02	CRADLE BODY A3M2551 T2000 BOTTOM		
303-30063-02	CRADLE BODY A3M2552 T2000 TOP		
303-30064-00	CRADLE CLIP A1M2550 T2000		
303-30065-01	KEY A3M2553 CRADLE T2000		
340-00010-23	FUSEHLDR INLINE 3M 972		
349-00010-49	SCREW SELFTAP NO 10X1/2 IN TYPE AB PAN POZI BZ		
349-00020-32	SCREW TAPTITE M3X8MM PAN POZI BZ		
353-00010-32	WASHER M5 SHAKEPROOF EXT BZ		
360-02003-01	GROMMET MIC CORD T2000 SII		
365-00100-09	LABEL WHITE VINYL 15X11MM S/A		
365-01376-00	LABEL A4A724 SOFTWARE		
365-01391-01	(L)LABEL BLNK 30*10.8MM TAMPERMARK VOID MA		
369-00020-46	TAPE 6 X 6MM FOAM 1 SIDE S/A		
399-00010-52	BAG PLASTIC 100*150MM		
410-01099-01	(L) PKG CARTON T2000 SERIES II		
410-01101-00	CARTON T700/T2000 OUTER (5 UNIT EA)		
410-01117-01	INSERT ADDENDUM FOR T2010/30 OPER MANL		
429-20000-04	INSTLN GDE T2000		
459-20100-02	USER GUIDE T2010/15 SII		

## T2010 & T1015 HC05 Logic Grid Reference Index (IPN 220-01377-01)

Device	PCB	Circuit	Device	PCB	Circuit	Device	PCB	Circuit	Device	PCB	Circuit
ALC	2:F1	1-V0	C628	1:C4	1-M0		1:K14	1-H0	R526	1:G15	1-F8
			C629	1:J14	1-N0	IC603	1:E3	1-P0	R527	1:L20	1-G9
BOARD	2:N14	1-T4	C630	1:C9	1-T1		1:E3	1-A2	R528	1:L20	1-H8
			#C630	1:D11	1-S1		1:E3	1-R0	R529	1:E9	1-F8
C500	1:J3	1-B6	#C631	1:J8	1-S2		1:E3	1-V1	R530	1:M18	1-I8
C501	1:J13	1-C8	C632	1:E8	1-T2		1:E3	1-U3	R531	1:M20	1-G6
C501A	1:J13	1-C8	C633	1:G6	1-U2	IC604	1:K8	1-V3	R532	1:G11	1-J7
C502	1:J10	1-B3	C634	1:C10	1-U1		1:K8	1-C5	R533	1:G17	1-I5
C503	1:K21	1-E5	C635	1:C11	1-U2		1:K8	1-H2	R534	1:G16	1-I5
C504	1:P21	1-H9	C636	1:D8	1-V1	IC614	1:D5	1-C1	R535	1:E11	1-K4
C505	1:J20	1-H8	C637	1:F2	1-U1		1:D5	1-N1	R536	1:E11	1-K4
C506	1:N21	1-G6	C638	1:F1	1-V0		1:D5	1-M0	R537	1:E12	1-K4
C507	1:N20	1-H6	C639	1:G5	1-V0		1:D5	1-J1	R538	1:D10	1-L5
C509	1:L15	1-C7	C640	1:G3	1-U0	ID	2:N13	1-T4	R539	1:F10	1-L5
C514	1:J12	1-I6	C641	1:E6	1-S0				R540	1:F10	1-L5
C515	1:J12	1-J6	C642	1:E4	1-R1	L501	1:N18	1-I4	R541	1:F11	1-M5
C517	1:M21	1-D8	C643	1:F4	1-Q0				R542	1:J10	1-E9
C518	1:H9	1-A6	C644	1:F4	1-Q0	P1	1:G10	1-U9	R543	1:J10	1-D9
C519	1:F9	1-B7	C645	1:C3	1-B9	P2	1:E13	1-U8	R544	1:F10	1-Q7
C520	1:J16	1-H5	C646	1:E1	1-Q0				R546	1:C3	1-Q4
C521	1:H20	1-H5	C647	1:F5	1-S0	Q501	1:C12	1-C9	R547	1:D10	1-L5
C522	1:H3	1-B6	C648	1:L6	1-C0	Q502	1:K10	1-D9	R568	1:D17	1-L7
C524	1:B7	1-B8	C650	1:D3	1-L1	Q503	1:K10	1-D9	R569	1:H16	1-G5
C525	1:K3	1-E5	C651	1:C6	1-N1	Q504	1:F15	1-D6	R570	1:J16	1-G5
C526	1:K3	1-E5	#C700	1:D8	1-L1	Q505	1:F11	1-K4	R571	1:L16	1-I6
C527	1:K3	1-F5	#C701	1:D15	1-P3	Q506	1:E15	1-C6	R572	1:K16	1-I6
C528	1:L11	1-S9	C702	1:F12	1-R1	Q507	1:L22	1-D7	R574	1:H3	1-B6
C529	1:E22	1-S9	#C703	1:C8	1-V5	Q508	1:E15	1-C6	R575	1:G17	1-E6
C530	1:D2	1-T9	#C704	1:G4	1-P1	#Q508	1:C7	1-J4	R578	1:G18	1-F6
C540	1:N19	1-I4	C705	1:D15	1-C6	Q509	1:E15	1-D6	R579	1:G17	1-E6
C541	1:N17	1-I4				Q510	1:F16	1-E6	R580	1:J10	1-J6
C542	1:H9	1-A6	D500	1:D9	1-K3	Q520	1:G18	1-E6	R581	1:G16	1-E7
C543	1:G9	1-B6	DISABLE	2:F1	1-U0	Q601	1:D4	1-J1	R582	1:G16	1-E7
C544	1:L3	1-B0				Q602	1:D3	1-M1	R583	1:K20	1-G9
C545	1:L14	1-N0	IC501	1:H14	1-E8	Q603	1:C11	1-U1	R584	1:F16	1-E6
C546	1:F7	1-V1	#IC503	1:J11	1-I6	Q604	1:H8	1-W2	R585	1:K9	1-C8
C547	1:J7	1-S1	IC504	1:N22	1-H9	Q605	1:G1	1-T0	R586	1:K9	1-D8
C600	1:E5	1-C1	IC506	1:E10	1-M4	Q606	1:E7	1-W1	R592	1:F13	1-H5
C601	1:K4	1-B1	IC507	1:C14	1-O4	Q607	1:F7	1-W0	R593	1:F13	1-H4
C602	1:L3	1-B0	IC509	1:D18	1-L7	Q608	1:G8	1-W2	R595	1:F16	1-E6
C603	1:K5	1-C1	#IC510	1:E16	1-W5				#R595	1:J21	1-G5
C604	1:C6	1-B2		1:E16	1-O3	R501	1:C12	1-B9	#R596	1:K21	1-G4
C605	1:K6	1-B0		1:E16	1-O2	R502	1:C12	1-C9	R599	1:L16	1-I6
C606	1:J7	1-C2		1:E16	1-V6	R503	1:K11	1-D9	R600	1:K7	1-B2
C607	1:L3	1-E2		1:E16	1-V6	R504	1:J10	1-D8	R601	1:E6	1-B1
C608	1:L4	1-D1	IC511	1:H16	1-V3	R505	1:L21	1-D7	R602	1:P2	1-D0
C609	1:L4	1-E1		1:H16	1-N5	R506	1:L21	1-D7	R603	1:K4	1-B0
C610	1:K5	1-D0		1:H16	1-I5	R507	1:D12	1-C9	R604	1:K4	1-B0
C611	1:L3	1-E1		1:H16	1-J4	R508	1:L21	1-D7	R605	1:K4	1-B0
C612	1:L7	1-G1		1:H16	1-G5	R509	1:K13	1-B7	R606	1:E6	1-B1
C613	1:M4	1-E0	#IC512	1:C16	1-M2	R510	1:J13	1-C8	R607	1:E4	1-D1
C614	1:N4	1-E0		1:C16	1-V5	R511	1:J8	1-B6	R608	1:M4	1-D0
C615	1:P4	1-F0		1:C16	1-L2	R512	1:J8	1-C6	R609	1:N3	1-D0
C616	1:N3	1-F0		1:C16	1-L3	R513	1:D9	1-K3	R610	1:C8	1-F4
C617	1:N3	1-G0		1:C16	1-K3	R514	1:J9	1-C4	R611	1:M4	1-D1
C618	1:M5	1-H0	IC513	1:G8	1-A7	R515	1:J9	1-C5	R612	1:K7	1-D2
C619	1:G15	1-I0	IC601	1:M3	1-E0	R516	1:F15	1-D6	R613	1:K4	1-D1
C620	1:J15	1-J0		1:M3	1-T3	R518	1:D2	1-B7	R614	1:L4	1-E1
C621	1:K15	1-J0		1:M3	1-G0	R519	1:D2	1-B7	R615	1:K7	1-G2
C622	1:H15	1-H0		1:M3	1-F1	R520	1:H15	1-E7	R616	1:L9	1-G1
C623	1:C4	1-L0		1:M3	1-C0	R521	1:M22	1-D8	R617	1:L8	1-G2
C624	1:B6	1-N1	IC602	1:K14	1-C7	R522	1:M22	1-D8	R618	1:L8	1-H1
C625	1:C6	1-N1		1:K14	1-T3	R523	1:B5	1-D4	R619	1:N4	1-E0
C626	1:L13	1-O0		1:K14	1-O0	R524	1:K20	1-E5	R620	1:N4	1-F0
C627	1:D7	1-M0		1:K14	1-K0	R525	1:K20	1-G8	R621	1:P2	1-F0

Device	PCB	Circuit	Device	PCB	Circuit	Device	PCB	Circuit	Device	PCB	Circuit
R622	1:L5	1-C0	R690	1:C4	1-J2						
R623	1:N3	1-G0	R691	1:C9	1-T1						
R624	1:N2	1-G0	R692	1:C5	1-C1						
R625	1:H15	1-I1	R693	1:C9	1-F4						
R626	1:P3	1-H0	R694	1:N17	1-H5						
R627	1:J15	1-H0	R695	1:E17	1-I5						
R628	1:G15	1-I0	R696	1:G16	1-I4						
R629	1:G15	1-I0	R697	1:F10	1-L4						
R630	1:D4	1-M0	R698	1:J14	1-M3						
R631	1:C4	1-M0	R699	1:C10	1-G3						
R632	1:K15	1-J0	R700	1:C13	1-O8						
R633	1:L15	1-K0	R701	1:C13	1-P8						
R634	1:L15	1-K0	R702	1:C13	1-P8						
R635	1:D4	1-J1	R703	1:D13	1-P8						
R636	1:D4	1-K1	R704	1:C14	1-P8						
R637	1:C3	1-L0	R705	1:C15	1-Q8						
R638	1:C3	1-L0	R706	1:C15	1-Q8						
R639	1:B5	1-B4	R707	1:C15	1-Q8						
R640	1:C4	1-L0	#R710	1:E12	1-S1						
R641	1:K13	1-N0	#R711	1:C12	1-U1						
R642	1:D4	1-M1	#R712	1:D13	1-L2						
R643	1:J15	1-N0	#R713	1:E6	1-S1						
R644	1:J15	1-N0	#R714	1:B16	1-N4						
R645	1:C5	1-O1	#R714A	1:B16	1-N4						
R646	1:K13	1-O0	R708	1:F4	1-P1						
R647	1:K13	1-O0	R720	1:E15	1-C6						
R648	1:D3	1-M2	R721	1:D15	1-C6						
R649	1:E7	1-V1	#R722	1:D15	1-C6						
R650	1:F7	1-V1	#R723	1:D15	1-C6						
R651	1:C3	1-B9	R724	1:E16	1-D6						
#R651	1:H8	1-S2	R725	1:E15	1-D7						
R652	1:F8	1-S2	R726	1:E15	1-D7						
R653	1:F7	1-T2	R727	1:F16	1-E6						
R654	1:G7	1-T2	RV507	1:L22	1-D7						
R655	1:D11	1-U2	#RV508	1:K22	1-G4						
R656	1:H8	1-T2									
R657	1:D11	1-T1	S1	1:L1	1-V9						
R658	1:C10	1-V1	S13	1:B4	1-V7						
R659	1:D10	1-T1	S14	1:B9	1-V7						
R660	1:C11	1-U2	S15	1:B13	1-V6						
R661	1:C11	1-V2	S2	1:B1	1-V9						
R662	1:G8	1-W2	S3	1:E20	1-U8						
R663	1:G8	1-V2	#SPEC1	1:M14	1-T4						
R664	1:C10	1-V1	#SPEC2	1:M14	1-T4						
R665	1:G2	1-U1	#SPEC3	1:M13	1-U4						
R666	1:E7	1-W0	#SPEC4	1:M13	1-U4						
R667	1:G2	1-U0	#SPEC5	1:M13	1-U4						
R668	1:F1	1-U0	#SPEC6	1:M13	1-V4						
R669	1:H2	1-U0	#SPEC7	1:M12	1-V4						
R670	1:G1	1-T0	#SPEC8	1:M12	1-V4						
R671	1:E2	1-T0	#SPEC9	1:M12	1-W4						
R672	1:F2	1-S0	#SPEC10	1:M11	1-W4						
R673	1:B3	1-S0	S8	1:H5	1-V8						
R674	1:E6	1-S0	SK505	1:K18	1-G6						
R675	1:F4	1-S0									
R676	1:F4	1-R1	TP601	2:J4	1-A3						
R677	1:F2	1-R0	TP602	2:K7	1-G1						
R678	1:E2	1-Q0	TP603	2:M8	1-I2						
R679	1:E4	1-Q0	TP604	2:L14	1-O0						
R680	1:G2	1-T1	TP605	2:F3	1-P0						
R681	1:E3	1-P0	TP606	2:G1	1-T1						
R682	1:D2	1-Q0	TP607	2:C12	1-U2						
R683	1:E2	1-Q0	TP608	2:B8	1-B3						
R684	1:L9	1-G1	TP609	2:K21	1-G9						
R685	1:F2	1-V0	TP610	2:E19	1-M8						
R686	1:H8	1-V2	TP611	2:F16	1-E6						
R687	1:L6	1-A0									
R688	1:K6	1-A0	X501	1:N20	1-G6						
R689	1:C5	1-I2	#X502	1:J12	1-J6						

# 7.10 T2010 & T2015 HC05 Logic PCB

## T2010 & T2015 HC05 Logic Parts List (IPN 220-01377-02)

### Parts List Amendments

Ref	Var	IPN	Description	Ref	Var	IPN	Description
C500		016-08470-01	CAP ELECT SMD 6X4MM 47M 16V	C634		015-24470-08	CAP CER 0805 CHIP 4N7 10% X7R 50V
C501		015-23680-08	CAP CER 0805 CHIP 680P 10% X7R 50V	C635		015-06100-08	CAP CER 1206 CHIP 100N 10% X7R 50V
C501A		018-14100-00	CAP 0603 CHIP 1N 50V X7R +-10%	C636		015-06100-08	CAP CER 1206 CHIP 100N 10% X7R 50V
C502		018-15100-00	CAP 0603 CHIP 10N 50V X7R +-10%	C637		018-11470-00	CAP 0603 CHIP 4P7 50V NPO +-0.25P
C503		018-15100-00	CAP 0603 CHIP 10N 50V X7R +-10%	C638		015-06100-08	CAP CER 1206 CHIP 100N 10% X7R 50V
C504		015-06100-08	CAP CER 1206 CHIP 100N 10% X7R 50V	C639		016-08470-01	CAP ELECT SMD 6X4MM 47M 16V
C505		015-06100-08	CAP CER 1206 CHIP 100N 10% X7R 50V	C640		016-08470-01	CAP ELECT SMD 6X4MM 47M 16V
C506		018-12220-00	CAP 0603 CHIP 22P 50V NPO +-5%	C641		018-14100-00	CAP 0603 CHIP 1N 50V X7R +-10%
C507		018-12220-00	CAP 0603 CHIP 22P 50V NPO +-5%	C642		015-23220-01	CAP CER 0805 CHIP 220P 5% NPO 50V
C509		018-14100-00	CAP 0603 CHIP 1N 50V X7R +-10%	C643		015-25150-08	CAP CER 0805 CHIP 15N 10% X7R 50V
C514		018-12220-00	CAP 0603 CHIP 22P 50V NPO +-5%	C644		015-25150-08	CAP CER 0805 CHIP 15N 10% X7R 50V
C515		018-12220-00	CAP 0603 CHIP 22P 50V NPO +-5%	C645		018-13150-00	CAP 0603 CHIP 150P 50V NPO +-5%
C517		015-23680-08	CAP CER 0805 CHIP 680P 10% X7R 50V	C646		014-07470-00	CAP TANT CHIP 4U7 'B' CASE 16V +-10% 267
C518		015-06100-08	CAP CER 1206 CHIP 100N 10% X7R 50V	C647		015-06100-08	CAP CER 1206 CHIP 100N 10% X7R 50V
C519		018-12220-00	CAP 0603 CHIP 22P 50V NPO +-5%	C648		016-08470-01	CAP ELECT SMD 6X4MM 47M 16V
C520		015-25220-08	CAP CER 0805 CHIP 22N 10% X7R 50V	C650		018-13150-00	CAP 0603 CHIP 150P 50V NPO +-5%
C521		015-06100-08	CAP CER 1206 CHIP 100N 10% X7R 50V	C651		018-13150-00	CAP 0603 CHIP 150P 50V NPO +-5%
C522		018-13150-00	CAP 0603 CHIP 150P 50V NPO +-5%	#C700		015-06100-08	CAP CER 1206 CHIP 100N 10% X7R 50V
C524		016-08470-01	CAP ELECT SMD 6X4MM 47M 16V	C702		015-06100-08	CAP CER 1206 CHIP 100N 10% X7R 50V
C525		018-13150-00	CAP 0603 CHIP 150P 50V NPO +-5%	#C703		015-06100-08	CAP CER 1206 CHIP 100N 10% X7R 50V
C526		018-13150-00	CAP 0603 CHIP 150P 50V NPO +-5%	C705		015-06100-08	CAP CER 1206 CHIP 100N 10% X7R 50V
C527		018-13150-00	CAP 0603 CHIP 150P 50V NPO +-5%	#C730		014-07470-00	CAP TANT CHIP 4U7 'B' CASE 16V +-10% 26
C528		018-13150-00	CAP 0603 CHIP 150P 50V NPO +-5%				
C530		018-13150-00	CAP 0603 CHIP 150P 50V NPO +-5%	D500		001-10000-70	(S) DIODE SMD BAV70 DUAL SWITCH SOT-23 C
C540		018-13150-00	CAP 0603 CHIP 150P 50V NPO +-5%	IC501		002-10936-60	(LS) IC SMD ST93C66CM6 4K EEPROM SER MI
C541		018-13150-00	CAP 0603 CHIP 150P 50V NPO +-5%	IC504		002-10340-64	(S) IC SMD MC34064 LO VOLT SENSE
C542		018-13100-00	CAP 0603 CHIP 100P 50V NPO +-5%	IC505		002-26870-55	(LSH) IC 68HC705C9 MPU (T201X 2.05) MAS
C543		018-13100-00	CAP 0603 CHIP 100P 50V NPO +-5%	IC506		002-10140-21	(S) IC MC14021BDR2 8BIT SHIFT REGSTR.SO
C544		018-13100-00	CAP 0603 CHIP 100P 50V NPO +-5%	IC507		002-10140-21	(S) IC MC14021BDR2 8BIT SHIFT REGSTR.SO
C545		018-13100-00	CAP 0603 CHIP 100P 50V NPO +-5%	IC509		002-74905-95	(S) IC SMD 74HC595 SHIFT REGISTER
C546		015-24330-08	CAP CER 0805 CHIP 3N3 10% X7R 50V	#IC510		002-74901-32	(S) IC SMD 74HC132 HCMOS QUAD SCHMT SO
C600		015-25150-08	CAP CER 0805 CHIP 15N 10% X7R 50V	IC511		002-74901-32	(S) IC SMD 74HC132 HCMOS QUAD SCHMT SO-
C601		014-07470-00	CAP TANT CHIP 4U7 'B' CASE 16V +-10% 267	IC513		002-10078-08	(S) IC SMD 78L08 8V REG SO8
C602		018-12820-00	CAP 0603 CHIP 82P 50V NPO +-5%	IC601		002-10003-24	(S) IC SMD 324 QUAD OP AMP SO14
C603		015-23220-01	CAP CER 0805 CHIP 220P 5% NPO 50V	IC602		002-10003-24	(S) IC SMD 324 QUAD OP AMP SO14
C604		014-07470-00	CAP TANT CHIP 4U7 'B' CASE 16V +-10% 267	IC603		002-10003-24	(S) IC SMD 324 QUAD OP AMP SO14
C605		014-07470-00	CAP TANT CHIP 4U7 'B' CASE 16V +-10% 267	IC604		002-10003-58	(S) IC SMD LM358 DUAL OP AMP
C606		015-06100-08	CAP CER 1206 CHIP 100N 10% X7R 50V	IC614		002-10040-53	(S) IC 4053 SMD TRIPLE 2CH MULTI-PLEXR
C607		015-06100-08	CAP CER 1206 CHIP 100N 10% X7R 50V				
C608		018-15100-00	CAP 0603 CHIP 10N 50V X7R +-10%	L501		056-10330-02	(L) IND SMD 330NH SIEMENS SMID02
C609		018-12470-00	CAP 0603 CHIP 47P 50V NPO +-5%				
C610		014-07470-00	CAP TANT CHIP 4U7 'B' CASE 16V +-10% 267	P1		240-10000-01	CONN SMD 24WAY (PLUG)
C611		018-13100-00	CAP 0603 CHIP 100P 50V NPO +-5%	P2		240-10000-01	CONN SMD 24WAY (PLUG)
C612		014-07470-00	CAP TANT CHIP 4U7 'B' CASE 16V +-10% 267				
C613		015-24470-08	CAP CER 0805 CHIP 4N7 10% X7R 50V	Q501		000-10084-81	(S) XSTR SMD BC848BW NPN SOT-323 SMALL S
C614		015-25150-08	CAP CER 0805 CHIP 15N 10% X7R 50V	Q502		000-10084-81	(S) XSTR SMD BC848BW NPN SOT-323 SMALL S
C615		015-25150-08	CAP CER 0805 CHIP 15N 10% X7R 50V	Q503		000-10008-69	(S) XSTR SMD BC869 PNP 1W 2A SOT-89
C616		015-25150-08	CAP CER 0805 CHIP 15N 10% X7R 50V	Q504		000-10084-81	(S) XSTR SMD BC848BW NPN SOT-323 SMALL S
C617		018-15100-00	CAP 0603 CHIP 10N 50V X7R +-10%	Q505		000-10085-71	(S) XSTR SMD BC857BW PNP SOT-323 SMALL S
C618		018-15100-00	CAP 0603 CHIP 10N 50V X7R +-10%	Q506		000-10085-71	(S) XSTR SMD BC857BW PNP SOT-323 SMALL S
C619		018-15100-00	CAP 0603 CHIP 10N 50V X7R +-10%	Q507		000-10003-12	(S) XSTR SMD BFR31 N JFET SOT-23
C620		018-15100-00	CAP 0603 CHIP 10N 50V X7R +-10%	Q508		000-10085-71	(S) XSTR SMD BC857BW PNP SOT-323 SMALL S
C621		018-15100-00	CAP 0603 CHIP 10N 50V X7R +-10%	Q509		000-10085-71	(S) XSTR SMD BC857BW PNP SOT-323 SMALL S
C622		018-15100-00	CAP 0603 CHIP 10N 50V X7R +-10%	Q510		000-10084-81	(S) XSTR SMD BC848BW NPN SOT-323 SMALL S
C623		015-06100-08	CAP CER 1206 CHIP 100N 10% X7R 50V	Q520		000-10084-81	(S) XSTR SMD BC848BW NPN SOT-323 SMALL S
C624		018-15100-00	CAP 0603 CHIP 10N 50V X7R +-10%	Q601		000-10084-81	(S) XSTR SMD BC848BW NPN SOT-323 SMALL S
C625		018-15100-00	CAP 0603 CHIP 10N 50V X7R +-10%	Q602		000-10084-81	(S) XSTR SMD BC848BW NPN SOT-323 SMALL S
C626		014-07470-00	CAP TANT CHIP 4U7 'B' CASE 16V +-10% 267	Q603		000-10084-81	(S) XSTR SMD BC848BW NPN SOT-323 SMALL S
C627		015-06100-08	CAP CER 1206 CHIP 100N 10% X7R 50V	Q604		000-10084-81	(S) XSTR SMD BC848BW NPN SOT-323 SMALL S
C628		018-15100-00	CAP 0603 CHIP 10N 50V X7R +-10%	Q605		000-10085-71	(S) XSTR SMD BC857BW PNP SOT-323 SMALL S
C629		015-23220-01	CAP CER 0805 CHIP 220P 5% NPO 50V	Q606		000-10084-81	(S) XSTR SMD BC848BW NPN SOT-323 SMALL S
C630		015-25150-08	CAP CER 0805 CHIP 15N 10% X7R 50V	Q607		000-10084-81	(S) XSTR SMD BC848BW NPN SOT-323 SMALL S
C632		014-07470-00	CAP TANT CHIP 4U7 'B' CASE 16V +-10% 267	Q608		000-10084-81	(S) XSTR SMD BC848BW NPN SOT-323 SMALL S
C633		016-08470-01	CAP ELECT SMD 6X4MM 47M 16V				

Ref	Var	IPN	Description	Ref	Var	IPN	Description
R501		038-15470-00	RES 0603 CHIP 47K 1/16W +-5%	R619		038-15100-00	RES 0603 CHIP 10K 1/16W +-5%
R502		038-15470-00	RES 0603 CHIP 47K 1/16W +-5%	R620		036-15270-00	RES M/F 0805 CHIP 27K 5%
R503		038-14220-00	RES 0603 CHIP 2K2 1/16W +-5%	R621		036-16390-00	RES M/F 0805 CHIP 390K 5%
R504		038-13220-00	RES 0603 CHIP 220E 1/16W +-5%	R622		038-15100-00	RES 0603 CHIP 10K 1/16W +-5%
R505		036-16150-00	RES M/F 0805 CHIP 150K 5%	R623		038-14680-00	RES 0603 CHIP 6K8 1/16W +-5%
R506		038-15100-00	RES 0603 CHIP 10K 1/16W +-5%	R624		038-15100-00	RES 0603 CHIP 10K 1/16W +-5%
R507		038-14470-00	RES 0603 CHIP 4K7 1/16W +-5%	R625		038-14680-00	RES 0603 CHIP 6K8 1/16W +-5%
RV507		042-15500-01	RES PRESET SMD 50K +-25% 4X4.5X2.5MM 0.	R626		036-15270-00	RES M/F 0805 CHIP 390K 5%
R508		038-16100-00	RES 0603 CHIP 100K 1/16W +-5%	R627		036-16390-00	RES M/F 0805 CHIP 390K 5%
R509		038-14220-00	RES 0603 CHIP 2K2 1/16W +-5%	R628		038-15100-00	RES 0603 CHIP 10K 1/16W +-5%
R510		036-18100-00	RES M/F 0805 CHIP 10M 10%	R629		038-15270-00	RES 0603 CHIP 27K 1/16W +-5%
R511		038-16470-00	RES 0603 CHIP 470K 1/16W +-5%	R630		038-17100-00	RES 0603 CHIP 1M 1/16W +-5%
R512		038-16100-00	RES 0603 CHIP 100K 1/16W +-5%	R631		038-14100-00	RES 0603 CHIP 1K0 1/16W +-5%
R513		038-10000-00	RES 0603 CHIP ZERO OHM 1/16W +-5%	R632		036-16390-00	RES M/F 0805 CHIP 390K 5%
R514		038-16100-00	RES 0603 CHIP 100K 1/16W +-5%	R633		038-15100-00	RES 0603 CHIP 10K 1/16W +-5%
R515		038-16100-00	RES 0603 CHIP 100K 1/16W +-5%	R634		038-14680-00	RES 0603 CHIP 6K8 1/16W +-5%
R516		038-15470-00	RES 0603 CHIP 47K 1/16W +-5%	R635		038-16220-00	RES 0603 CHIP 220K 1/16W +-5%
R518		038-14100-00	RES 0603 CHIP 1K0 1/16W +-5%	R636		038-16100-00	RES 0603 CHIP 100K 1/16W +-5%
R519		038-14100-00	RES 0603 CHIP 1K0 1/16W +-5%	R637		038-16100-00	RES 0603 CHIP 100K 1/16W +-5%
R520		038-15470-00	RES 0603 CHIP 47K 1/16W +-5%	R638		038-15100-00	RES 0603 CHIP 10K 1/16W +-5%
R521		038-15100-00	RES 0603 CHIP 10K 1/16W +-5%	R639		038-14220-00	RES 0603 CHIP 2K2 1/16W +-5%
R522		038-14470-00	RES 0603 CHIP 4K7 1/16W +-5%	R640		038-17100-00	RES 0603 CHIP 1M 1/16W +-5%
R523		036-16470-00	RES M/F 0805 CHIP 470K 5%	R641		036-16150-00	RES M/F 0805 CHIP 150K 5%
R524		038-16100-00	RES 0603 CHIP 100K 1/16W +-5%	R642		038-16100-00	RES 0603 CHIP 100K 1/16W +-5%
R525		038-15470-00	RES 0603 CHIP 47K 1/16W +-5%	R643		036-16330-00	RES M/F 0805 CHIP 330K 5%
R526		038-15100-00	RES 0603 CHIP 10K 1/16W +-5%	R644		038-17100-00	RES 0603 CHIP 1M 1/16W +-5%
R527		038-15470-00	RES 0603 CHIP 47K 1/16W +-5%	R645		038-16100-00	RES 0603 CHIP 100K 1/16W +-5%
R528		038-10000-00	RES 0603 CHIP ZERO OHM 1/16W +-5%	R646		036-16330-00	RES M/F 0805 CHIP 330K 5%
R529		038-15470-00	RES 0603 CHIP 47K 1/16W +-5%	R647		038-14220-00	RES 0603 CHIP 2K2 1/16W +-5%
R530		038-14470-00	RES 0603 CHIP 4K7 1/16W +-5%	R648		038-16220-00	RES 0603 CHIP 220K 1/16W +-5%
R531		036-18100-00	RES M/F 0805 CHIP 10M 10%	R649		038-17100-00	RES 0603 CHIP 1M 1/16W +-5%
R532		038-15470-00	RES 0603 CHIP 47K 1/16W +-5%	R650		038-14100-00	RES 0603 CHIP 1K0 1/16W +-5%
R533		038-15470-00	RES 0603 CHIP 47K 1/16W +-5%	R651		038-15150-00	RES 0603 CHIP 15K 1/16W +-5%
R534		038-15470-00	RES 0603 CHIP 47K 1/16W +-5%	R652		038-14470-00	RES 0603 CHIP 4K7 1/16W +-5%
R535		036-14270-00	RES M/F 0805 CHIP 2K7 5%	R653		036-14270-00	RES M/F 0805 CHIP 2K7 5%
R536		038-15470-00	RES 0603 CHIP 47K 1/16W +-5%	R654		038-13220-00	RES 0603 CHIP 220E 1/16W +-5%
R537		038-15100-00	RES 0603 CHIP 10K 1/16W +-5%	R655		038-14220-00	RES 0603 CHIP 2K2 1/16W +-5%
R538		038-15100-00	RES 0603 CHIP 10K 1/16W +-5%	R656		038-14220-00	RES 0603 CHIP 2K2 1/16W +-5%
R539		038-15100-00	RES 0603 CHIP 10K 1/16W +-5%	R657		036-14120-00	RES M/F 0805 CHIP 1K2 5%
R540		038-15100-00	RES 0603 CHIP 10K 1/16W +-5%	R658		036-16150-00	RES M/F 0805 CHIP 150K 5%
R541		038-15100-00	RES 0603 CHIP 10K 1/16W +-5%	R659		036-14270-00	RES M/F 0805 CHIP 2K7 5%
R542		038-15470-00	RES 0603 CHIP 47K 1/16W +-5%	R660		038-15100-00	RES 0603 CHIP 10K 1/16W +-5%
R543		038-14220-00	RES 0603 CHIP 2K2 1/16W +-5%	R661		038-15470-00	RES 0603 CHIP 47K 1/16W +-5%
R544		038-15100-00	RES 0603 CHIP 10K 1/16W +-5%	R662		038-14100-00	RES 0603 CHIP 1K0 1/16W +-5%
R546		038-15100-00	RES 0603 CHIP 10K 1/16W +-5%	R663		038-15470-00	RES 0603 CHIP 47K 1/16W +-5%
R547		038-15470-00	RES 0603 CHIP 47K 1/16W +-5%	R664		036-15220-00	RES M/F 0805 CHIP 22K 5%
R568		038-14100-00	RES 0603 CHIP 1K0 1/16W +-5%	R665		036-16470-00	RES M/F 0805 CHIP 470K 5%
R569		038-16100-00	RES 0603 CHIP 100K 1/16W +-5%	R666		036-16150-00	RES M/F 0805 CHIP 150K 5%
R570		038-15470-00	RES 0603 CHIP 47K 1/16W +-5%	R667		038-17100-00	RES 0603 CHIP 1M 1/16W +-5%
R571		038-15470-00	RES 0603 CHIP 47K 1/16W +-5%	R668		038-16470-00	RES 0603 CHIP 470K 1/16W +-5%
R572		038-15470-00	RES 0603 CHIP 47K 1/16W +-5%	R669		036-14180-00	RES M/F 0805 CHIP 1K8 5%
R574		038-12100-00	RES 0603 CHIP 10E 1/16W +-5%	R670		038-15100-00	RES 0603 CHIP 10K 1/16W +-5%
R575		038-15100-00	RES 0603 CHIP 10K 1/16W +-5%	R671		038-14470-00	RES 0603 CHIP 4K7 1/16W +-5%
R578		038-16100-00	RES 0603 CHIP 100K 1/16W +-5%	R672		038-15100-00	RES 0603 CHIP 10K 1/16W +-5%
R579		038-14100-00	RES 0603 CHIP 1K0 1/16W +-5%	R673		038-15100-00	RES 0603 CHIP 10K 1/16W +-5%
R580		036-18100-00	RES M/F 0805 CHIP 10M 10%	R674		038-15100-00	RES 0603 CHIP 10K 1/16W +-5%
R581		036-15220-00	RES M/F 0805 CHIP 22K 5%	R675		038-15470-00	RES 0603 CHIP 47K 1/16W +-5%
R582		038-16220-00	RES 0603 CHIP 220K 1/16W +-5%	R676		038-15470-00	RES 0603 CHIP 47K 1/16W +-5%
R583		038-14100-00	RES 0603 CHIP 1K0 1/16W +-5%	R677		038-15100-00	RES 0603 CHIP 10K 1/16W +-5%
R584		038-15150-00	RES 0603 CHIP 15K 1/16W +-5%	R678		038-16100-00	RES 0603 CHIP 100K 1/16W +-5%
R585		036-13680-00	RES M/F 0805 CHIP 680E 5%	R679		038-15470-00	RES 0603 CHIP 47K 1/16W +-5%
R586		036-13680-00	RES M/F 0805 CHIP 680E 5%	R680		036-14270-00	RES M/F 0805 CHIP 2K7 5%
R592		038-16100-00	RES 0603 CHIP 100K 1/16W +-5%	R681		038-15100-00	RES 0603 CHIP 10K 1/16W +-5%
R593		038-16100-00	RES 0603 CHIP 100K 1/16W +-5%	R682		036-14180-00	RES M/F 0805 CHIP 1K8 5%
R595		038-16100-00	RES 0603 CHIP 100K 1/16W +-5%	R683		038-15100-00	RES 0603 CHIP 10K 1/16W +-5%
#R596		036-15390-00	RES M/F 0805 CHIP 39K 5%	R684		036-13680-00	RES M/F 0805 CHIP 680E 5%
R599		038-10000-00	RES 0603 CHIP ZERO OHM 1/16W +-5%	R685		038-10000-00	RES 0603 CHIP ZERO OHM 1/16W +-5%
R600		038-14220-00	RES 0603 CHIP 2K2 1/16W +-5%	R686		038-15470-00	RES 0603 CHIP 47K 1/16W +-5%
R601		036-15820-00	RES M/F 0805 CHIP 82K 5%	R687		038-15100-00	RES 0603 CHIP 10K 1/16W +-5%
R602		036-14820-00	RES M/F 0805 CHIP 8K2 5%	R688		038-15100-00	RES 0603 CHIP 10K 1/16W +-5%
R603		038-16100-00	RES 0603 CHIP 100K 1/16W +-5%	R689		036-15220-00	RES M/F 0805 CHIP 22K 5%
R604		038-16220-00	RES 0603 CHIP 220K 1/16W +-5%	R690		036-15220-00	RES M/F 0805 CHIP 22K 5%
R605		038-16220-00	RES 0603 CHIP 220K 1/16W +-5%	R691		038-14220-00	RES 0603 CHIP 2K2 1/16W +-5%
R606		038-17100-00	RES 0603 CHIP 1M 1/16W +-5%	R692		036-15220-00	RES M/F 0805 CHIP 22K 5%
R607		038-16100-00	RES 0603 CHIP 100K 1/16W +-5%	R693		038-14100-00	RES 0603 CHIP 1K0 1/16W +-5%
R608		036-15220-00	RES M/F 0805 CHIP 22K 5%	R694		038-14100-00	RES 0603 CHIP 1K0 1/16W +-5%
R609		038-16220-00	RES 0603 CHIP 220K 1/16W +-5%	R695		038-14100-00	RES 0603 CHIP 1K0 1/16W +-5%
R610		038-14470-00	RES 0603 CHIP 4K7 1/16W +-5%	R696		038-14100-00	RES 0603 CHIP 1K0 1/16W +-5%
R611		038-16220-00	RES 0603 CHIP 220K 1/16W +-5%	R697		038-14100-00	RES 0603 CHIP 1K0 1/16W +-5%
R612		038-13220-00	RES 0603 CHIP 220E 1/16W +-5%	R698		038-14100-00	RES 0603 CHIP 1K0 1/16W +-5%
R613		038-16100-00	RES 0603 CHIP 100K 1/16W +-5%	R699		038-14100-00	RES 0603 CHIP 1K0 1/16W +-5%
R614		038-16220-00	RES 0603 CHIP 220K 1/16W +-5%	R700		038-15100-00	RES 0603 CHIP 10K 1/16W +-5%
R615		038-14220-00	RES 0603 CHIP 2K2 1/16W +-5%	R701		038-15100-00	RES 0603 CHIP 10K 1/16W +-5%
R616		038-14220-00	RES 0603 CHIP 2K2 1/16W +-5%	R702		038-15100-00	RES 0603 CHIP 10K 1/16W +-5%
R617		038-14680-00	RES 0603 CHIP 6K8 1/16W +-5%	R703		038-15100-00	RES 0603 CHIP 10K 1/16W +-5%
R618		038-17100-00	RES 0603 CHIP 1M 1/16W +-5%	R704		038-15100-00	RES 0603 CHIP 10K 1/16W +-5%



Ref	Var	IPN	Description	Ref	Var	IPN	Description
R705		038-15100-00	RES 0603 CHIP 10K 1/16W +-5%				
R706		038-15100-00	RES 0603 CHIP 10K 1/16W +-5%				
R707		038-15100-00	RES 0603 CHIP 10K 1/16W +-5%				
R708		038-10000-00	RES 0603 CHIP ZERO OHM 1/16W +-5%				
#R710		038-10000-00	RES 0603 CHIP ZERO OHM 1/16W +-5%				
#R712		038-10000-00	RES 0603 CHIP ZERO OHM 1/16W +-5%				
#R713		038-10000-00	RES 0603 CHIP ZERO OHM 1/16W +-5%				
#R714		038-10000-00	RES 0603 CHIP ZERO OHM 1/16W +-5%				
R720		038-10000-00	RES 0603 CHIP ZERO OHM 1/16W +-5%				
R721		038-15470-00	RES 0603 CHIP 47K 1/16W +-5%				
#R722		036-16330-00	RES M/F 0805 CHIP 330K 5%				
#R723		038-16220-00	RES 0603 CHIP 220K 1/16W +-5%				
R724		038-15270-00	RES 0603 CHIP 27K 1/16W +-5%				
R725		038-15100-00	RES 0603 CHIP 10K 1/16W +-5%				
R726		038-15270-00	RES 0603 CHIP 27K 1/16W +-5%				
R727		038-15470-00	RES 0603 CHIP 47K 1/16W +-5%				
#R735		038-15100-00	RES 0603 CHIP 10K 1/16W +-5%				
#SPEC1		038-10000-00	RES 0603 CHIP ZERO OHM 1/16W +-5%				
S1		240-10000-07	CONN SMD SKT 16WAY 2ROW MICROMATCH				
S2		240-10000-06	CONN SMD SKT 12WAY 2ROW MICROMATCH				
S8		240-10000-07	CONN SMD SKT 16WAY 2ROW MICROMATCH				
S13		240-10000-06	CONN SMD SKT 12WAY 2ROW MICROMATCH				
S14		240-10000-07	CONN SMD SKT 16WAY 2ROW MICROMATCH				
S15		240-10000-07	CONN SMD SKT 16WAY 2ROW MICROMATCH				
SK505		240-04020-42	SKT 44 PIN SMD PLCC CHIP CARRIER				
X501		274-01070-00	XTAL 4.000MHZ HC49U/S C/W TEFLON INSULAT				

## T2010 & T2015 HC05 Logic Mechanical & Miscellaneous Parts

IPN	Description	IPN	Description
219-02584-00	CABLE ASSEMBLY T2000 PWR CABLE		
220-01377-02	(L) PCB T2010/15 LOGIC HC05 COMMON PLATFOR		
240-00020-12	PLUG MICROPHONE BT SR937 (PIN 2 MISSING)		
240-00100-13	PLUG COAX BNC CORD MTG CRIMP URM76		
240-02010-75	SKT RECEP TL SML 172775-1		
240-04021-63	CONN 2WAY 24AWG (BLACK) INLINE HERMAPHRODITIC		
252-00010-37	MIC AWC DYNAMIC 600E 6WAY M095D TINSEL SHLD'D		
252-00010-49	MIC CLIP (SPRING STEEL CONTACT)		
265-00010-60	FUSE 10A 12V AUTOMOTIVE STAPLE TYPE		
303-23134-02	COVER TOP A1M2504 T2000 PNTD CMLPT		
303-30062-02	CRADLE BODY A3M2551 T2000 BOTTOM		
303-30063-02	CRADLE BODY A3M2552 T2000 TOP		
303-30064-00	CRADLE CLIP A1M2550 T2000		
303-30065-03	KEY T2000 SII		
340-00010-23	FUSEHLDR INLINE 3M 972		
349-00010-49	SCREW SELFTAP NO 10X1/2 IN TYPE AB PAN POZI BZ		
349-00020-32	SCREW TAPTITE M3X8MM PAN POZI BZ		
353-00010-32	WASHER M5 SHAKEPROOF EXT BZ		
362-01028-00	GASKET A4M2652 130X3MM CONDUCT STRIPS		
360-02003-01	GROMMET MIC CORD T2000 SII		
365-00100-09	LABEL WHITE VINYL 15X11MM S/A		
365-01376-00	LABEL A4A724 SOFTWARE		
365-01391-01	(L)LABEL BLNK 30*10.8MM TAMPERMARK VOID MA		
369-00020-46	TAPE 6 X 6MM FOAM 1 SIDE S/A		
399-00010-52	BAG PLASTIC 100*150MM		
410-01099-01	(L) PKG CARTON T2000 SERIES II		
410-01101-00	CARTON T700/T2000 OUTER (5 UNIT EA)		

## T2010 & T1015 HC05 Logic Grid Reference Index (IPN 220-01377-02)

Device	PCB	Circuit	Device	PCB	Circuit	Device	PCB	Circuit	Device	PCB	Circuit
ALC	2:G1	1-V0	C629	1:L14	1-N0	IC602	1:K15	1-O0	R525	1:K21	1-G8
BOARD	2:N14	1-T4	C630	1:C5	1-T1	IC602	1:K15	1-T3	R526	1:G15	1-F8
C500	1:J3	1-B6	#C631	1:G6	1-S2	IC603	1:E4	1-U3	R527	1:L21	1-G9
C501	1:J14	1-C8	C632	1:G7	1-T2	IC603	1:E4	1-P0	R528	1:L21	1-H8
C502	1:J10	1-B3	C633	1:E7	1-U2	IC603	1:E4	1-V1	R529	1:E11	1-F8
C503	1:K21	1-E5	C634	1:F5	1-U1	IC603	1:E4	1-R0	R530	1:M19	1-I8
C504	1:P21	1-H9	C635	1:F5	1-U2	IC603	1:E4	1-A2	R531	1:M21	1-G6
C505	1:J21	1-H8	C636	1:E5	1-V1	IC604	1:K8	1-H2	R532	1:F12	1-J7
C506	1:N21	1-G6	C637	1:D4	1-U1	IC604	1:K8	1-V3	R533	1:G17	1-I5
C507	1:N20	1-H6	C638	1:C4	1-V0	IC604	1:K8	1-C5	R534	1:G16	1-I5
C509	1:L15	1-C7	C639	1:G4	1-V0	IC614	1:E8	1-J1	R535	1:E12	1-K4
C514	1:J12	1-I6	C640	1:G3	1-U0	IC614	1:E8	1-C1	R536	1:C10	1-K4
C515	1:J12	1-J6	C641	1:C4	1-S0	IC614	1:E8	1-M0	R537	1:D12	1-K4
C517	1:M21	1-D8	C642	1:C3	1-R1	IC614	1:E8	1-N1	R538	1:C11	1-L5
C518	1:H9	1-A6	C643	1:D3	1-Q0	ID	2:N14	1-T4	R539	1:E11	1-L5
C519	1:F9	1-B7	C644	1:E3	1-Q0	L501	1:N19	1-I4	R540	1:E11	1-L5
C520	1:J16	1-H5	C645	1:C3	1-B9	P1	1:G10	1-U9	R541	1:E12	1-M5
C521	1:H21	1-H5	C646	1:F5	1-Q0	P2	1:E14	1-U8	R542	1:J10	1-E9
C522	1:H3	1-B6	C647	1:C4	1-S0	Q501	1:C12	1-C9	R543	1:J10	1-D9
C524	1:B7	1-B8	C648	1:L7	1-C0	Q502	1:K11	1-D9	R544	1:E11	1-Q7
C525	1:K3	1-E5	C650	1:D10	1-L1	Q503	1:K10	1-D9	R546	1:C6	1-Q4
C526	1:K3	1-E5	C651	1:C6	1-N1	Q504	1:F16	1-D6	R547	1:C11	1-L5
C527	1:K3	1-F5	#C700	1:C9	1-L1	Q505	1:C12	1-K4	R548	1:D18	1-L7
C528	1:L12	1-S9	#C701	1:D15	1-P3	Q506	1:E16	1-C6	R569	1:H17	1-G5
C529	1:E22	1-S9	C702	1:F12	1-R1	Q507	1:L22	1-D7	R570	1:J16	1-G5
C530	1:E2	1-T9	#C703	1:C9	1-V5	Q508	1:E16	1-C6	R571	1:L17	1-I6
C540	1:N19	1-I4	#C704	1:E2	1-P1	Q509	1:E16	1-D6	R572	1:K17	1-I6
C541	1:N18	1-I4	C705	1:D15	1-C6	Q510	1:F16	1-E6	R574	1:H3	1-B6
C542	1:H9	1-A6	#C730	1:G5	1-S1	Q508	1:E16	1-C6	R575	1:G17	1-E6
C543	1:G9	1-B6	C501A	1:J13	1-C8	Q509	1:E16	1-D6	R578	1:G18	1-F6
C544	1:L4	1-B0	D500	1:C10	1-K3	Q510	1:F16	1-E6	R579	1:G17	1-E6
C545	1:L14	1-N0	D500	1:C10	1-K3	#Q518	1:C7	1-J4	R580	1:J11	1-J6
C546	1:D6	1-V1	DISABLE	2:F1	1-U0	Q520	1:G18	1-E6	R581	1:G17	1-E7
C547	1:G6	1-S1	IC501	1:H14	1-E8	Q601	1:E9	1-J1	R582	1:G16	1-E7
C600	1:F8	1-C1	#IC503	1:J12	1-I6	Q602	1:D9	1-M1	R583	1:K21	1-G9
C601	1:K4	1-B1	IC504	1:N22	1-H9	Q603	1:F6	1-U1	R584	1:F16	1-E6
C602	1:L4	1-B0	IC506	1:D11	1-M4	Q604	1:H8	1-W2	R585	1:K10	1-C8
C603	1:K5	1-C1	IC507	1:C14	1-O4	Q605	1:F2	1-T0	R586	1:K10	1-D8
C604	1:F10	1-B2	IC509	1:D19	1-L7	Q606	1:D7	1-W1	R592	1:F14	1-H5
C605	1:K6	1-B0	#IC510	1:E17	1-V6	Q607	1:D7	1-W0	R593	1:F14	1-H4
C606	1:J8	1-C2	#IC510	1:E17	1-O2	Q608	1:G8	1-W2	R595	1:F17	1-E6
C607	1:L3	1-E2	#IC510	1:E17	1-W5	R501	1:C12	1-B9	#R596	1:K21	1-G4
C608	1:L5	1-D1	#IC510	1:E17	1-V6	R502	1:C12	1-C9	R599	1:L17	1-I6
C609	1:L4	1-E1	#IC510	1:E17	1-O3	R503	1:K11	1-D9	R600	1:K8	1-B2
C610	1:K5	1-D0	IC511	1:H16	1-V3	R504	1:J10	1-D8	R601	1:F8	1-B1
C611	1:L3	1-E1	IC511	1:H16	1-G5	R505	1:L21	1-D7	R602	1:P3	1-D0
C612	1:L8	1-G1	IC511	1:H16	1-N5	R506	1:L21	1-D7	R603	1:K5	1-B0
C613	1:M5	1-E0	IC511	1:H16	1-I5	R507	1:D12	1-C9	R604	1:K5	1-B0
C614	1:M5	1-E0	IC511	1:H16	1-J4	R508	1:L21	1-D7	R605	1:K5	1-B0
C615	1:P5	1-F0	#IC512	1:C17	1-K3	R509	1:K14	1-B7	R606	1:F9	1-B1
C616	1:N4	1-F0	#IC512	1:C17	1-L3	R510	1:J13	1-C8	R607	1:E8	1-D1
C617	1:N3	1-G0	#IC512	1:C17	1-M2	R511	1:J9	1-B6	R608	1:L5	1-D0
C618	1:M5	1-H0	#IC512	1:C17	1-V5	R512	1:J8	1-C6	R609	1:N4	1-D0
C619	1:G15	1-I0	#IC512	1:C17	1-L2	R513	1:D10	1-K3	R610	1:C9	1-F4
C620	1:J16	1-J0	IC513	1:G9	1-A7	R514	1:J9	1-C4	R611	1:M5	1-D1
C621	1:K16	1-J0	IC601	1:M4	1-E0	R515	1:J9	1-C5	R612	1:K8	1-D2
C622	1:H15	1-H0	IC601	1:M4	1-T3	R516	1:F16	1-D6	R613	1:K4	1-D1
C623	1:C9	1-L0	IC601	1:M4	1-C0	R518	1:D3	1-B7	R614	1:L4	1-E1
C624	1:B6	1-N1	IC601	1:M4	1-F1	R519	1:D3	1-B7	R615	1:K8	1-G2
C625	1:C6	1-N1	IC601	1:M4	1-G0	R520	1:H15	1-E7	R616	1:L9	1-G1
C626	1:L14	1-O0	IC602	1:K15	1-H0	R521	1:M22	1-D8	R617	1:L8	1-G2
C627	1:E10	1-M0	IC602	1:K15	1-C7	R522	1:M22	1-D8	R618	1:L9	1-H1
C628	1:E8	1-M0	IC602	1:K15	1-K0	R523	1:B6	1-D4	R619	1:N4	1-E0
						R524	1:K21	1-E5	R620	1:M5	1-F0
									R621	1:P2	1-F0

Device	PCB	Circuit	Device	PCB	Circuit	Device	PCB	Circuit	Device	PCB	Circuit
R622	1:L5	1-C0	R691	1:C3	1-T1	X501	1:N21	1-G6			
R623	1:N3	1-G0	R692	1:F8	1-C1	#X502	1:J13	1-J6			
R624	1:N3	1-G0	R693	1:C10	1-F4						
R625	1:H15	1-I1	R694	1:N18	1-H5						
R626	1:P3	1-H0	R695	1:E18	1-I5						
R627	1:J16	1-H0	R696	1:G16	1-I4						
R628	1:G15	1-I0	R697	1:C11	1-L4						
R629	1:G15	1-I0	R698	1:J15	1-M3						
R630	1:D8	1-M0	R699	1:C11	1-G3						
R631	1:E8	1-M0	R700	1:C13	1-O8						
R632	1:K16	1-J0	R701	1:C13	1-P8						
R633	1:L15	1-K0	R702	1:C13	1-P8						
R634	1:L16	1-K0	R703	1:D13	1-P8						
R635	1:E10	1-J1	R704	1:C14	1-P8						
R636	1:D8	1-K1	R705	1:C15	1-Q8						
R637	1:C8	1-L0	R706	1:C15	1-Q8						
R638	1:C8	1-L0	R707	1:C15	1-Q8						
R639	1:B5	1-B4	R708	1:E3	1-P1						
R640	1:C8	1-L0	#R710	1:D5	1-S1						
R641	1:K14	1-N0	#R711	1:D5	1-U1						
R642	1:D8	1-M1	#R712	1:D13	1-L2						
R643	1:M15	1-N0	#R713	1:C5	1-S1						
R644	1:J14	1-N0	#R714	1:B16	1-N4						
R645	1:C5	1-O1	#R715	1:B16	1-N4						
R646	1:K14	1-O0	R720	1:E15	1-C6						
R647	1:K13	1-O0	R721	1:D16	1-C6						
R648	1:D10	1-M2	#R722	1:D16	1-C6						
R649	1:D6	1-V1	#R723	1:D16	1-C6						
R650	1:D8	1-V1	R724	1:E16	1-D6						
R651	1:C3	1-B9	R725	1:E15	1-D7						
R652	1:G7	1-S2	R726	1:E15	1-D7						
R653	1:F7	1-T2	R727	1:F16	1-E6						
R654	1:F7	1-T2	#R735	1:J21	1-G5						
R655	1:F6	1-U2	#R751	1:G7	1-S2						
R656	1:F6	1-T2	RV507	1:L22	1-D7						
R657	1:G6	1-T1	#RV508	1:K22	1-G4						
R658	1:D5	1-V1									
R659	1:F5	1-T1	S1	1:L2	1-V9						
R660	1:F6	1-U2	S2	1:B2	1-V9						
R661	1:E6	1-V2	S3	1:E20	1-U8						
R662	1:G8	1-W2	S8	1:H5	1-V8						
R663	1:G8	1-V2	S13	1:B4	1-V7						
R664	1:D5	1-V1	S14	1:B10	1-V7						
R665	1:D4	1-U1	S15	1:B14	1-V6						
R666	1:D8	1-W0	SK505	1:K19	1-G6						
R667	1:G2	1-U0	#SPEC1	1:M14	1-T4						
R668	1:D4	1-U0	#SPEC2	1:M14	1-T4						
R669	1:F2	1-U0	#SPEC3	1:M14	1-U4						
R670	1:F2	1-T0	#SPEC4	1:M13	1-U4						
R671	1:F2	1-T0	#SPEC5	1:M13	1-U4						
R672	1:C5	1-S0	#SPEC6	1:M13	1-V4						
R673	1:C4	1-S0	#SPEC7	1:M13	1-V4						
R674	1:C4	1-S0	#SPEC8	1:M12	1-V4						
R675	1:C3	1-S0	#SPEC9	1:M12	1-W4						
R676	1:D3	1-R1	#SPEC10	1:M12	1-W4						
R677	1:E3	1-R0									
R678	1:F4	1-Q0	TP601	2:J5	1-A3						
R679	1:E3	1-Q0	TP602	2:K7	1-G1						
R680	1:D2	1-T1	TP603	2:M9	1-I2						
R681	1:F3	1-P0	TP604	2:L14	1-O0						
R682	1:F4	1-Q0	TP605	2:F3	1-P0						
R683	1:F4	1-Q0	TP606	2:F1	1-T1						
R684	1:L9	1-G1	TP607	2:E5	1-U2						
R685	1:G2	1-V0	TP608	2:B8	1-B3						
R686	1:H8	1-V2	TP609	2:K21	1-G9						
R687	1:L6	1-A0	TP610	2:E19	1-M8						
R688	1:K6	1-A0	TP611	2:F16	1-E6						
R689	1:F11	1-I2	TP614	1:C11	1-I2						
R690	1:F10	1-J2									

# 7.10 T2010 & T2015 HC05 Logic PCB

## T2010 & T2015 HC05 Logic Parts List (IPN 220-01377-03)

### Parts List Amendments

Ref	Var	IPN	Description	Ref	Var	IPN	Description
C500	016-08470-01		CAP ELECT SMD 6X4MM 47M 16V	C634	015-24470-08		CAP CER 0805 CHIP 4N7 10% X7R 50V
C501	015-23680-08		CAP CER 0805 CHIP 680P 10% X7R 50V	C635	015-06100-08		CAP CER 1206 CHIP 100N 10% X7R 50V
C501A	018-14100-00		CAP 0603 CHIP 1N 50V X7R +-10%	C636	015-06100-08		CAP CER 1206 CHIP 100N 10% X7R 50V
C502	018-15100-00		CAP 0603 CHIP 10N 50V X7R +-10%	C637	018-11470-10		CAP 0603 CHIP 4P7 50V NPO +-0.1P
C503	018-15100-00		CAP 0603 CHIP 10N 50V X7R +-10%	C638	015-06100-08		CAP CER 1206 CHIP 100N 10% X7R 50V
C504	015-06100-08		CAP CER 1206 CHIP 100N 10% X7R 50V	C639	016-08470-01		CAP ELECT SMD 6X4MM 47M 16V
C505	015-06100-08		CAP CER 1206 CHIP 100N 10% X7R 50V	C640	016-08470-01		CAP ELECT SMD 6X4MM 47M 16V
C506	018-12220-10		CAP 0603 CHIP 22P 50V NPO +-1%	C641	018-14100-00		CAP 0603 CHIP 1N 50V X7R +-10%
C507	018-12220-10		CAP 0603 CHIP 22P 50V NPO +-1%	C642	015-23220-01		CAP CER 0805 CHIP 220P 5% NPO 50V
C509	018-14100-00		CAP 0603 CHIP 1N 50V X7R +-10%	C643	015-25150-08		CAP CER 0805 CHIP 15N 10% X7R 50V
C514	018-12220-10		CAP 0603 CHIP 22P 50V NPO +-1%	C644	015-25150-08		CAP CER 0805 CHIP 15N 10% X7R 50V
C515	018-12220-10		CAP 0603 CHIP 22P 50V NPO +-1%	C645	018-13150-00		CAP 0603 CHIP 150P 50V NPO +-5%
C517	015-23680-08		CAP CER 0805 CHIP 680P 10% X7R 50V	C646	014-07470-01		CAP TANT CHIP 4U7 'B' CASE 25V +-10% 267
C518	015-06100-08		CAP CER 1206 CHIP 100N 10% X7R 50V	C647	015-06100-08		CAP CER 1206 CHIP 100N 10% X7R 50V
C519	015-06100-08		CAP CER 1206 CHIP 100N 10% X7R 50V	C648	016-08470-01		CAP ELECT SMD 6X4MM 47M 16V
C520	015-25220-08		CAP CER 0805 CHIP 22N 10% X7R 50V	C650	018-13150-00		CAP 0603 CHIP 150P 50V NPO +-5%
C521	015-06100-08		CAP CER 1206 CHIP 100N 10% X7R 50V	C651	018-13150-00		CAP 0603 CHIP 150P 50V NPO +-5%
C522	018-13150-00		CAP 0603 CHIP 150P 50V NPO +-5%	#C700	015-06100-08		CAP CER 1206 CHIP 100N 10% X7R 50V
C524	016-08470-01		CAP ELECT SMD 6X4MM 47M 16V	C702	015-06100-08		CAP CER 1206 CHIP 100N 10% X7R 50V
C525	018-13150-00		CAP 0603 CHIP 150P 50V NPO +-5%	#C703	015-06100-08		CAP CER 1206 CHIP 100N 10% X7R 50V
C526	018-13150-00		CAP 0603 CHIP 150P 50V NPO +-5%	C705	015-06100-08		CAP CER 1206 CHIP 100N 10% X7R 50V
C527	018-13150-00		CAP 0603 CHIP 150P 50V NPO +-5%	#C730	014-07470-01		CAP TANT CHIP 4U7 'B' CASE 25V +-10% 26
C528	018-13150-00		CAP 0603 CHIP 150P 50V NPO +-5%				
C530	018-13150-00		CAP 0603 CHIP 150P 50V NPO +-5%	D500	001-10000-70	(S)	DIODE SMD BAV70 DUAL SWITCH SOT-23 C
C540	018-13150-00		CAP 0603 CHIP 150P 50V NPO +-5%				
C541	018-13150-00		CAP 0603 CHIP 150P 50V NPO +-5%	IC501	002-10936-60	(LS)	IC SMD ST93C66CM6 4K EEPROM SER MI
C542	018-13100-10		CAP 0603 CHIP 100P 50V NPO +-1%	IC504	002-10340-64	(S)	IC SMD MC34064 LO VOLT SENSE
C543	018-13100-10		CAP 0603 CHIP 100P 50V NPO +-1%	IC505	002-26870-59	(S)	IC MC68HC705C9ACFN 8BIT OTP MCU 44
C544	018-13100-10		CAP 0603 CHIP 100P 50V NPO +-1%	IC506	002-10140-21	(S)	IC MC14021BDR2 8BIT SHIFT REGSTR.SO
C545	018-13100-10		CAP 0603 CHIP 100P 50V NPO +-1%	IC507	002-10140-21	(S)	IC MC14021BDR2 8BIT SHIFT REGSTR.SO
C546	015-24330-08		CAP CER 0805 CHIP 3N3 10% X7R 50V	IC509	002-74905-95	(S)	IC SMD 74HC595 SHIFT REGISTER
C600	015-25150-08		CAP CER 0805 CHIP 15N 10% X7R 50V	#IC510	002-74901-32	(S)	IC SMD 74HC132 HCMOS QUAD SCHMT SO
C601	014-07470-01		CAP TANT CHIP 4U7 'B' CASE 25V +-10% 267	IC511	002-74901-32	(S)	IC SMD 74HC132 HCMOS QUAD SCHMT SO-
C602	018-12820-10		CAP 0603 CHIP 82P 50V NPO +-1%	IC513	002-10078-08	(S)	IC SMD 78L08 8V REG SO8
C603	015-23220-01		CAP CER 0805 CHIP 220P 5% NPO 50V	IC601	002-10003-24	(S)	IC SMD 324 QUAD OP AMP SO14
C604	014-07470-01		CAP TANT CHIP 4U7 'B' CASE 25V +-10% 267	IC602	002-10003-24	(S)	IC SMD 324 QUAD OP AMP SO14
C605	014-07470-01		CAP TANT CHIP 4U7 'B' CASE 25V +-10% 267	IC603	002-10003-24	(S)	IC SMD 324 QUAD OP AMP SO14
C606	015-06100-08		CAP CER 1206 CHIP 100N 10% X7R 50V	IC604	002-10003-58	(S)	IC SMD LM358 DUAL OP AMP
C607	015-06100-08		CAP CER 1206 CHIP 100N 10% X7R 50V	IC614	002-10040-53	(S)	IC 4053 SMD TRIPLE 2CH MULTI-PLEXR
C608	018-15100-00		CAP 0603 CHIP 10N 50V X7R +-10%				
C609	018-12470-10		CAP 0603 CHIP 47P 50V NPO +-1%	L501	056-10330-02	(L)	IND SMD 330NH SIEMENS SMID02
C610	014-07470-01		CAP TANT CHIP 4U7 'B' CASE 25V +-10% 267				
C611	018-13100-10		CAP 0603 CHIP 100P 50V NPO +-1%	P1	240-10000-01		CONN SMD 24WAY (PLUG)
C612	014-07470-01		CAP TANT CHIP 4U7 'B' CASE 25V +-10% 267	P2	240-10000-01		CONN SMD 24WAY (PLUG)
C613	015-24470-08		CAP CER 0805 CHIP 4N7 10% X7R 50V				
C614	015-25150-08		CAP CER 0805 CHIP 15N 10% X7R 50V	Q501	000-10084-81	(S)	XSTR SMD BC848BW NPN SOT-323 SMALL S
C615	015-25150-08		CAP CER 0805 CHIP 15N 10% X7R 50V	Q502	000-10084-81	(S)	XSTR SMD BC848BW NPN SOT-323 SMALL S
C616	015-25150-08		CAP CER 0805 CHIP 15N 10% X7R 50V	Q503	000-10008-69	(S)	XSTR SMD BC869 PNP 1W 2A SOT-89
C617	018-15100-00		CAP 0603 CHIP 10N 50V X7R +-10%	Q504	000-10084-81	(S)	XSTR SMD BC848BW NPN SOT-323 SMALL S
C618	018-15100-00		CAP 0603 CHIP 10N 50V X7R +-10%	Q505	000-10085-71	(S)	XSTR SMD BC857BW PNP SOT-323 SMALL S
C619	018-15100-00		CAP 0603 CHIP 10N 50V X7R +-10%	Q506	000-10085-71	(S)	XSTR SMD BC857BW PNP SOT-323 SMALL S
C620	018-15100-00		CAP 0603 CHIP 10N 50V X7R +-10%	Q507	000-10003-12	(S)	XSTR SMD BFR31 N JFET SOT-23
C621	018-15100-00		CAP 0603 CHIP 10N 50V X7R +-10%	Q508	000-10085-71	(S)	XSTR SMD BC857BW PNP SOT-323 SMALL S
C622	018-15100-00		CAP 0603 CHIP 10N 50V X7R +-10%	Q509	000-10085-71	(S)	XSTR SMD BC857BW PNP SOT-323 SMALL S
C623	015-06100-08		CAP CER 1206 CHIP 100N 10% X7R 50V	Q510	000-10084-81	(S)	XSTR SMD BC848BW NPN SOT-323 SMALL S
C624	018-15100-00		CAP 0603 CHIP 10N 50V X7R +-10%	Q520	000-10084-81	(S)	XSTR SMD BC848BW NPN SOT-323 SMALL S
C625	018-15100-00		CAP 0603 CHIP 10N 50V X7R +-10%	Q601	000-10084-81	(S)	XSTR SMD BC848BW NPN SOT-323 SMALL S
C626	014-07470-01		CAP TANT CHIP 4U7 'B' CASE 25V +-10% 267	Q602	000-10084-81	(S)	XSTR SMD BC848BW NPN SOT-323 SMALL S
C627	015-06100-08		CAP CER 1206 CHIP 100N 10% X7R 50V	Q603	000-10084-81	(S)	XSTR SMD BC848BW NPN SOT-323 SMALL S
C628	018-15100-00		CAP 0603 CHIP 10N 50V X7R +-10%	Q604	000-10084-81	(S)	XSTR SMD BC848BW NPN SOT-323 SMALL S
C629	015-23220-01		CAP CER 0805 CHIP 220P 5% NPO 50V	Q605	000-10085-71	(S)	XSTR SMD BC857BW PNP SOT-323 SMALL S
C630	015-25150-08		CAP CER 0805 CHIP 15N 10% X7R 50V	Q606	000-10084-81	(S)	XSTR SMD BC848BW NPN SOT-323 SMALL S
C632	014-07470-01		CAP TANT CHIP 4U7 'B' CASE 25V +-10% 267	Q607	000-10084-81	(S)	XSTR SMD BC848BW NPN SOT-323 SMALL S
C633	016-08470-01		CAP ELECT SMD 6X4MM 47M 16V	Q608	000-10084-81	(S)	XSTR SMD BC848BW NPN SOT-323 SMALL S

Ref	Var	IPN	Description	Ref	Var	IPN	Description
R501	038-15470-00	RES 0603 CHIP 47K 1/16W +-5%		R619	038-15100-00	RES 0603 CHIP 10K 1/16W +-5%	
R502	038-15470-00	RES 0603 CHIP 47K 1/16W +-5%		R620	036-15270-00	RES M/F 0805 CHIP 27K 5%	
R503	038-14220-00	RES 0603 CHIP 2K2 1/16W +-5%		R621	036-16390-00	RES M/F 0805 CHIP 390K 5%	
R504	038-13220-00	RES 0603 CHIP 220E 1/16W +-5%		R622	038-15100-00	RES 0603 CHIP 10K 1/16W +-5%	
R505	036-16150-00	RES M/F 0805 CHIP 150K 5%		R623	038-14680-00	RES 0603 CHIP 6K8 1/16W +-5%	
R506	038-15100-00	RES 0603 CHIP 10K 1/16W +-5%		R624	038-15100-00	RES 0603 CHIP 10K 1/16W +-5%	
R507	038-14470-00	RES 0603 CHIP 4K7 1/16W +-5%		R625	038-14680-00	RES 0603 CHIP 6K8 1/16W +-5%	
RV507	042-15500-01	RES PRESET SMD 50K +-25% 4X4.5X2.5MM 0.		R626	036-15270-00	RES M/F 0805 CHIP 390K 5%	
R508	038-16100-00	RES 0603 CHIP 100K 1/16W +-5%		R627	036-16390-00	RES M/F 0805 CHIP 390K 5%	
R509	038-14220-00	RES 0603 CHIP 2K2 1/16W +-5%		R628	038-15100-00	RES 0603 CHIP 10K 1/16W +-5%	
R510	036-18100-00	RES M/F 0805 CHIP 10M 10%		R629	038-15270-00	RES 0603 CHIP 27K 1/16W +-5%	
R511	038-16470-00	RES 0603 CHIP 470K 1/16W +-5%		R630	038-17100-00	RES 0603 CHIP 1M 1/16W +-5%	
R512	038-16100-00	RES 0603 CHIP 100K 1/16W +-5%		R631	038-14100-00	RES 0603 CHIP 1K0 1/16W +-5%	
R513	038-10000-00	RES 0603 CHIP ZERO OHM 1/16W +-5%		R632	036-16390-00	RES M/F 0805 CHIP 390K 5%	
R514	038-16100-00	RES 0603 CHIP 100K 1/16W +-5%		R633	038-15100-00	RES 0603 CHIP 10K 1/16W +-5%	
R515	038-16100-00	RES 0603 CHIP 100K 1/16W +-5%		R634	038-14680-00	RES 0603 CHIP 6K8 1/16W +-5%	
R516	038-15470-00	RES 0603 CHIP 47K 1/16W +-5%		R635	038-16220-00	RES 0603 CHIP 220K 1/16W +-5%	
R518	038-14100-00	RES 0603 CHIP 1K0 1/16W +-5%		R636	038-16100-00	RES 0603 CHIP 100K 1/16W +-5%	
R519	038-14100-00	RES 0603 CHIP 1K0 1/16W +-5%		R637	038-16100-00	RES 0603 CHIP 100K 1/16W +-5%	
R520	038-15470-00	RES 0603 CHIP 47K 1/16W +-5%		R638	038-15100-00	RES 0603 CHIP 10K 1/16W +-5%	
R521	038-15100-00	RES 0603 CHIP 10K 1/16W +-5%		R639	038-14220-00	RES 0603 CHIP 2K2 1/16W +-5%	
R522	038-14470-00	RES 0603 CHIP 4K7 1/16W +-5%		R640	038-17100-00	RES 0603 CHIP 1M 1/16W +-5%	
R523	036-16470-00	RES M/F 0805 CHIP 470K 5%		R641	036-16150-00	RES M/F 0805 CHIP 150K 5%	
R524	038-16100-00	RES 0603 CHIP 100K 1/16W +-5%		R642	038-16100-00	RES 0603 CHIP 100K 1/16W +-5%	
R525	038-15470-00	RES 0603 CHIP 47K 1/16W +-5%		R643	036-16330-00	RES M/F 0805 CHIP 330K 5%	
R526	038-15100-00	RES 0603 CHIP 10K 1/16W +-5%		R644	038-17100-00	RES 0603 CHIP 1M 1/16W +-5%	
R527	038-15470-00	RES 0603 CHIP 47K 1/16W +-5%		R645	038-16100-00	RES 0603 CHIP 100K 1/16W +-5%	
R528	038-10000-00	RES 0603 CHIP ZERO OHM 1/16W +-5%		R646	036-16330-00	RES M/F 0805 CHIP 330K 5%	
R529	038-15470-00	RES 0603 CHIP 47K 1/16W +-5%		R647	038-14220-00	RES 0603 CHIP 2K2 1/16W +-5%	
R530	038-14470-00	RES 0603 CHIP 4K7 1/16W +-5%		R648	038-16220-00	RES 0603 CHIP 220K 1/16W +-5%	
R531	036-18100-00	RES M/F 0805 CHIP 10M 10%		R649	038-17100-00	RES 0603 CHIP 1M 1/16W +-5%	
R532	038-15470-00	RES 0603 CHIP 47K 1/16W +-5%		R650	038-14100-00	RES 0603 CHIP 1K0 1/16W +-5%	
R533	038-15470-00	RES 0603 CHIP 47K 1/16W +-5%		R651	038-15150-00	RES 0603 CHIP 15K 1/16W +-5%	
R534	038-15470-00	RES 0603 CHIP 47K 1/16W +-5%		R652	038-14470-00	RES 0603 CHIP 4K7 1/16W +-5%	
R535	036-14270-00	RES M/F 0805 CHIP 2K7 5%		R653	036-14270-00	RES M/F 0805 CHIP 2K7 5%	
R536	038-15470-00	RES 0603 CHIP 47K 1/16W +-5%		R654	038-13220-00	RES 0603 CHIP 220E 1/16W +-5%	
R537	038-15100-00	RES 0603 CHIP 10K 1/16W +-5%		R655	038-14220-00	RES 0603 CHIP 2K2 1/16W +-5%	
R538	038-15100-00	RES 0603 CHIP 10K 1/16W +-5%		R656	038-14220-00	RES 0603 CHIP 2K2 1/16W +-5%	
R539	038-15100-00	RES 0603 CHIP 10K 1/16W +-5%		R657	036-14120-00	RES M/F 0805 CHIP 1K2 5%	
R540	038-15100-00	RES 0603 CHIP 10K 1/16W +-5%		R658	036-16150-00	RES M/F 0805 CHIP 150K 5%	
R541	038-15100-00	RES 0603 CHIP 10K 1/16W +-5%		R659	036-14270-00	RES M/F 0805 CHIP 2K7 5%	
R542	038-15470-00	RES 0603 CHIP 47K 1/16W +-5%		R660	038-15100-00	RES 0603 CHIP 10K 1/16W +-5%	
R543	038-14220-00	RES 0603 CHIP 2K2 1/16W +-5%		R661	038-15470-00	RES 0603 CHIP 47K 1/16W +-5%	
R544	038-15100-00	RES 0603 CHIP 10K 1/16W +-5%		R662	038-14100-00	RES 0603 CHIP 1K0 1/16W +-5%	
R546	038-15100-00	RES 0603 CHIP 10K 1/16W +-5%		R663	038-15470-00	RES 0603 CHIP 47K 1/16W +-5%	
R547	038-15470-00	RES 0603 CHIP 47K 1/16W +-5%		R664	036-15220-00	RES M/F 0805 CHIP 22K 5%	
R568	038-14100-00	RES 0603 CHIP 1K0 1/16W +-5%		R665	036-16470-00	RES M/F 0805 CHIP 470K 5%	
R569	038-16100-00	RES 0603 CHIP 100K 1/16W +-5%		R666	036-16150-00	RES M/F 0805 CHIP 150K 5%	
R570	038-15470-00	RES 0603 CHIP 47K 1/16W +-5%		R667	038-17100-00	RES 0603 CHIP 1M 1/16W +-5%	
R571	038-15470-00	RES 0603 CHIP 47K 1/16W +-5%		R668	038-16470-00	RES 0603 CHIP 470K 1/16W +-5%	
R572	038-15470-00	RES 0603 CHIP 47K 1/16W +-5%		R669	036-14180-00	RES M/F 0805 CHIP 1K8 5%	
R574	038-12100-00	RES 0603 CHIP 10E 1/16W +-5%		R670	038-15100-00	RES 0603 CHIP 10K 1/16W +-5%	
R575	038-15100-00	RES 0603 CHIP 10K 1/16W +-5%		R671	038-14470-00	RES 0603 CHIP 4K7 1/16W +-5%	
R578	038-16100-00	RES 0603 CHIP 100K 1/16W +-5%		R672	038-15100-00	RES 0603 CHIP 10K 1/16W +-5%	
R579	038-14100-00	RES 0603 CHIP 1K0 1/16W +-5%		R673	038-15100-00	RES 0603 CHIP 10K 1/16W +-5%	
R580	036-18100-00	RES M/F 0805 CHIP 10M 10%		R674	038-15100-00	RES 0603 CHIP 10K 1/16W +-5%	
R581	036-15220-00	RES M/F 0805 CHIP 22K 5%		R675	038-15470-00	RES 0603 CHIP 47K 1/16W +-5%	
R582	038-16220-00	RES 0603 CHIP 220K 1/16W +-5%		R676	038-15470-00	RES 0603 CHIP 47K 1/16W +-5%	
R583	038-14100-00	RES 0603 CHIP 1K0 1/16W +-5%		R677	038-15100-00	RES 0603 CHIP 10K 1/16W +-5%	
R584	038-15150-00	RES 0603 CHIP 15K 1/16W +-5%		R678	038-16100-00	RES 0603 CHIP 100K 1/16W +-5%	
R585	036-13680-00	RES M/F 0805 CHIP 680E 5%		R679	038-15470-00	RES 0603 CHIP 47K 1/16W +-5%	
R586	036-13680-00	RES M/F 0805 CHIP 680E 5%		R680	036-14270-00	RES M/F 0805 CHIP 2K7 5%	
R592	038-16100-00	RES 0603 CHIP 100K 1/16W +-5%		R681	038-15100-00	RES 0603 CHIP 10K 1/16W +-5%	
R593	038-16100-00	RES 0603 CHIP 100K 1/16W +-5%		R682	036-14180-00	RES M/F 0805 CHIP 1K8 5%	
R595	038-16100-00	RES 0603 CHIP 100K 1/16W +-5%		R683	038-15100-00	RES 0603 CHIP 10K 1/16W +-5%	
#R596	036-15390-00	RES M/F 0805 CHIP 39K 5%		R684	036-13680-00	RES M/F 0805 CHIP 680E 5%	
R599	038-10000-00	RES 0603 CHIP ZERO OHM 1/16W +-5%		R685	038-10000-00	RES 0603 CHIP ZERO OHM 1/16W +-5%	
R600	038-14220-00	RES 0603 CHIP 2K2 1/16W +-5%		R686	038-15470-00	RES 0603 CHIP 47K 1/16W +-5%	
R601	036-15820-00	RES M/F 0805 CHIP 82K 5%		R687	038-15100-00	RES 0603 CHIP 10K 1/16W +-5%	
R602	036-14820-00	RES M/F 0805 CHIP 8K2 5%		R688	038-15100-00	RES 0603 CHIP 10K 1/16W +-5%	
R603	038-16100-00	RES 0603 CHIP 100K 1/16W +-5%		R689	036-15220-00	RES M/F 0805 CHIP 22K 5%	
R604	038-16220-00	RES 0603 CHIP 220K 1/16W +-5%		R690	036-15220-00	RES M/F 0805 CHIP 22K 5%	
R605	038-16220-00	RES 0603 CHIP 220K 1/16W +-5%		R691	038-14220-00	RES 0603 CHIP 2K2 1/16W +-5%	
R606	038-17100-00	RES 0603 CHIP 1M 1/16W +-5%		R692	036-15220-00	RES M/F 0805 CHIP 22K 5%	
R607	038-16100-00	RES 0603 CHIP 100K 1/16W +-5%		R693	038-14100-00	RES 0603 CHIP 1K0 1/16W +-5%	
R608	036-15220-00	RES M/F 0805 CHIP 22K 5%		R694	038-14100-00	RES 0603 CHIP 1K0 1/16W +-5%	
R609	038-16220-00	RES 0603 CHIP 220K 1/16W +-5%		R695	038-14100-00	RES 0603 CHIP 1K0 1/16W +-5%	
R610	038-14470-00	RES 0603 CHIP 4K7 1/16W +-5%		R696	038-14100-00	RES 0603 CHIP 1K0 1/16W +-5%	
R611	038-16220-00	RES 0603 CHIP 220K 1/16W +-5%		R697	038-14100-00	RES 0603 CHIP 1K0 1/16W +-5%	
R612	038-13220-00	RES 0603 CHIP 220E 1/16W +-5%		R698	038-14100-00	RES 0603 CHIP 1K0 1/16W +-5%	
R613	038-16100-00	RES 0603 CHIP 100K 1/16W +-5%		R699	038-14100-00	RES 0603 CHIP 1K0 1/16W +-5%	
R614	038-16220-00	RES 0603 CHIP 220K 1/16W +-5%		R700	038-15100-00	RES 0603 CHIP 10K 1/16W +-5%	
R615	038-14220-00	RES 0603 CHIP 2K2 1/16W +-5%		R701	038-15100-00	RES 0603 CHIP 10K 1/16W +-5%	
R616	038-14220-00	RES 0603 CHIP 2K2 1/16W +-5%		R702	038-15100-00	RES 0603 CHIP 10K 1/16W +-5%	
R617	038-14680-00	RES 0603 CHIP 6K8 1/16W +-5%		R703	038-15100-00	RES 0603 CHIP 10K 1/16W +-5%	
R618	038-17100-00	RES 0603 CHIP 1M 1/16W +-5%		R704	038-15100-00	RES 0603 CHIP 10K 1/16W +-5%	

Ref	Var	IPN	Description	Ref	Var	IPN	Description
R705	038-15100-00	RES 0603	CHIP 10K 1/16W +-5%				
R706	038-15100-00	RES 0603	CHIP 10K 1/16W +-5%				
R707	038-15100-00	RES 0603	CHIP 10K 1/16W +-5%				
R708	038-10000-00	RES 0603	CHIP ZERO OHM 1/16W +-5%				
#R710	038-10000-00	RES 0603	CHIP ZERO OHM 1/16W +-5%				
#R712	038-10000-00	RES 0603	CHIP ZERO OHM 1/16W +-5%				
#R713	038-10000-00	RES 0603	CHIP ZERO OHM 1/16W +-5%				
#R714	038-10000-00	RES 0603	CHIP ZERO OHM 1/16W +-5%				
R720	038-10000-00	RES 0603	CHIP ZERO OHM 1/16W +-5%				
R721	038-15470-00	RES 0603	CHIP 47K 1/16W +-5%				
#R722	036-16330-00	RES M/F 0805	CHIP 330K 5%				
#R723	038-16220-00	RES 0603	CHIP 220K 1/16W +-5%				
R724	038-15270-00	RES 0603	CHIP 27K 1/16W +-5%				
R725	038-15100-00	RES 0603	CHIP 10K 1/16W +-5%				
R726	038-15270-00	RES 0603	CHIP 27K 1/16W +-5%				
R727	038-15470-00	RES 0603	CHIP 47K 1/16W +-5%				
#R735	038-15100-00	RES 0603	CHIP 10K 1/16W +-5%				
#SPEC1038-10000-00		RES 0603	CHIP ZERO OHM 1/16W +-5%				
S1	240-10000-07	CONN SMD SKT	16WAY 2ROW MICROMATCH				
S2	240-10000-06	CONN SMD SKT	12WAY 2ROW MICROMATCH				
S8	240-10000-07	CONN SMD SKT	16WAY 2ROW MICROMATCH				
S13	240-10000-06	CONN SMD SKT	12WAY 2ROW MICROMATCH				
S14	240-10000-07	CONN SMD SKT	16WAY 2ROW MICROMATCH				
S15	240-10000-07	CONN SMD SKT	16WAY 2ROW MICROMATCH				
SK505	240-04020-42	SKT 44 PIN SMD PLCC	CHIP CARRIER				
X501	274-01070-00	XTAL 4.000MHZ	HC49U/S C/W TEFLON INSULAT				

## T2010 & T2015 HC05 Logic Mechanical & Miscellaneous Parts

IPN	Description	IPN	Description
219-02584-00	CABLE ASSEMBLY T2000 PWR CABLE		
220-01377-03	(L) PCB T2010/15 LOGIC HC05 COMMON PLATFOR		
240-00020-12	PLUG MICROPHONE BT SR937 (PIN 2 MISSING)		
240-00100-13	PLUG COAX BNC CORD MTG CRIMP URM76		
240-02010-75	SKT RECEP TL SML 172775-1		
240-04021-63	CONN 2WAY 24AWG (BLACK) INLINE HERMAPHRODITIC		
252-00010-37	MIC AWC DYNAMIC 600E 6WAY M095D TINSEL SHLD'D		
252-00010-49	MIC CLIP (SPRING STEEL CONTACT)		
265-00010-60	FUSE 10A 12V AUTOMOTIVE STAPLE TYPE		
303-23134-02	COVER TOP A1M2504 T2000 PNTD CMPLT		
303-30062-02	CRADLE BODY A3M2551 T2000 BOTTOM		
303-30063-02	CRADLE BODY A3M2552 T2000 TOP		
303-30064-00	CRADLE CLIP A1M2550 T2000		
303-30065-03	KEY T2000 SII		
340-00010-23	FUSEHLDR INLINE 3M 972		
349-00010-49	SCREW SELFTAP NO 10X1/2 IN TYPE AB PAN POZI BZ		
349-00020-32	SCREW TAPTITE M3X8MM PAN POZI BZ		
353-00010-32	WASHER M5 SHAKEPROOF EXT BZ		
360-02003-01	GROMMET MIC CORD T2000 SII		
362-01028-00	GASKET A4M2652 130X3MM CONDUCT STRIPS		
365-00100-09	LABEL WHITE VINYL 15X11MM S/A		
365-00100-20	LABEL WHITE S/A 28X11MM QUIKSTIK RW718/4		
365-01376-00	LABEL A4A724 SOFTWARE		
365-01391-01	(L)LABEL BLNK 30*10.8MM TAMPERMARK VOID MA		
369-00020-46	TAPE 6 X 6MM FOAM 1 SIDE S/A		
399-00010-52	BAG PLASTIC 100*150MM		
410-01099-01	(L) PKG CARTON T2000 SERIES II		
410-01101-01	CARTON T700/T2000 SII OUTER (5 UNIT EA)		



## T2010 & T1015 HC05 Logic Grid Reference Index (IPN 220-01377-03)

Device	PCB	Circuit	Device	PCB	Circuit	Device	PCB	Circuit	Device	PCB	Circuit
ALC	2:G1	1-V0	C629	1:L14	1-N0	IC602	1:K15	1-O0	R525	1:K21	1-G8
BOARD	2:N14	1-T4	C630	1:C5	1-T1	IC602	1:K15	1-T3	R526	1:G15	1-F8
C500	1:J3	1-B6	#C631	1:G6	1-S2	IC603	1:E4	1-U3	R527	1:L21	1-G9
C501	1:J14	1-C8	C632	1:G7	1-T2	IC603	1:E4	1-P0	R528	1:L21	1-H8
C502	1:J10	1-B3	C633	1:E7	1-U2	IC603	1:E4	1-V1	R529	1:E11	1-F8
C503	1:K21	1-E5	C634	1:F5	1-U1	IC603	1:E4	1-R0	R530	1:M19	1-I8
C504	1:P21	1-H9	C635	1:F5	1-U2	IC603	1:E4	1-A2	R531	1:M21	1-G6
C505	1:J21	1-H8	C636	1:E5	1-V1	IC604	1:K8	1-H2	R532	1:F12	1-J7
C506	1:N21	1-G6	C637	1:D4	1-U1	IC604	1:K8	1-V3	R533	1:G17	1-I5
C507	1:N20	1-H6	C638	1:C4	1-V0	IC604	1:K8	1-C5	R534	1:G16	1-I5
C509	1:L15	1-C7	C639	1:G4	1-V0	IC614	1:E8	1-J1	R535	1:E12	1-K4
C514	1:J12	1-I6	C640	1:G3	1-U0	IC614	1:E8	1-C1	R536	1:C10	1-K4
C515	1:J12	1-J6	C641	1:C4	1-S0	IC614	1:E8	1-M0	R537	1:D12	1-K4
C517	1:M21	1-D8	C642	1:C3	1-R1	IC614	1:E8	1-N1	R538	1:C11	1-L5
C518	1:H9	1-A6	C643	1:D3	1-Q0	ID	2:N14	1-T4	R539	1:E11	1-L5
C519	1:F9	1-B7	C644	1:E3	1-Q0	L501	1:N19	1-I4	R540	1:E11	1-L5
C520	1:J16	1-H5	C645	1:C3	1-B9	P1	1:G10	1-U9	R541	1:E12	1-M5
C521	1:H21	1-H5	C646	1:F5	1-Q0	P2	1:E14	1-U8	R542	1:J10	1-E9
C522	1:H3	1-B6	C647	1:C4	1-S0	Q501	1:C12	1-C9	R543	1:J10	1-D9
C524	1:B7	1-B8	C648	1:L7	1-C0	Q502	1:K11	1-D9	R544	1:E11	1-Q7
C525	1:K3	1-E5	C650	1:D10	1-L1	Q503	1:K10	1-D9	R546	1:C6	1-Q4
C526	1:K3	1-E5	C651	1:C6	1-N1	Q504	1:F16	1-D6	R547	1:C11	1-L5
C527	1:K3	1-F5	#C700	1:C9	1-L1	Q505	1:C12	1-K4	R548	1:D18	1-L7
C528	1:L12	1-S9	#C701	1:D15	1-P3	Q506	1:E16	1-C6	R569	1:H17	1-G5
C529	1:E22	1-S9	C702	1:F12	1-R1	Q507	1:L22	1-D7	R570	1:J16	1-G5
C530	1:E2	1-T9	#C703	1:C9	1-V5	Q508	1:E16	1-C6	R571	1:L17	1-I6
C540	1:N19	1-I4	#C704	1:E2	1-P1	Q509	1:E16	1-D6	R572	1:K17	1-I6
C541	1:N18	1-I4	C705	1:D15	1-C6	Q510	1:F16	1-E6	R574	1:H3	1-B6
C542	1:H9	1-A6	#C730	1:G5	1-S1	Q508	1:E16	1-C6	R575	1:G17	1-E6
C543	1:G9	1-B6	C501A	1:J13	1-C8	Q509	1:E16	1-D6	R578	1:G18	1-F6
C544	1:L4	1-B0	D500	1:C10	1-K3	Q510	1:F16	1-E6	R579	1:G17	1-E6
C545	1:L14	1-N0	D500	1:C10	1-K3	#Q518	1:C7	1-J4	R580	1:J11	1-J6
C546	1:D6	1-V1	DISABLE	2:F1	1-U0	Q520	1:G18	1-E6	R581	1:G17	1-E7
C547	1:G6	1-S1	IC501	1:H14	1-E8	Q601	1:E9	1-J1	R582	1:G16	1-E7
C600	1:F8	1-C1	#IC503	1:J12	1-I6	Q602	1:D9	1-M1	R583	1:K21	1-G9
C601	1:K4	1-B1	IC504	1:N22	1-H9	Q603	1:F6	1-U1	R584	1:F16	1-E6
C602	1:L4	1-B0	IC506	1:D11	1-M4	Q604	1:H8	1-W2	R585	1:K10	1-C8
C603	1:K5	1-C1	IC507	1:C14	1-O4	Q605	1:F2	1-T0	R586	1:K10	1-D8
C604	1:F10	1-B2	IC509	1:D19	1-L7	Q606	1:D7	1-W1	R592	1:F14	1-H5
C605	1:K6	1-B0	#IC510	1:E17	1-V6	Q607	1:D7	1-W0	R593	1:F14	1-H4
C606	1:J8	1-C2	#IC510	1:E17	1-O2	Q608	1:G8	1-W2	R595	1:F17	1-E6
C607	1:L3	1-E2	#IC510	1:E17	1-W5	R501	1:C12	1-B9	#R596	1:K21	1-G4
C608	1:L5	1-D1	#IC510	1:E17	1-V6	R502	1:C12	1-C9	R599	1:L17	1-I6
C609	1:L4	1-E1	#IC510	1:E17	1-O3	R503	1:K11	1-D9	R600	1:K8	1-B2
C610	1:K5	1-D0	IC511	1:H16	1-V3	R504	1:J10	1-D8	R601	1:F8	1-B1
C611	1:L3	1-E1	IC511	1:H16	1-G5	R505	1:L21	1-D7	R602	1:P3	1-D0
C612	1:L8	1-G1	IC511	1:H16	1-N5	R506	1:L21	1-D7	R603	1:K5	1-B0
C613	1:M5	1-E0	IC511	1:H16	1-I5	R507	1:D12	1-C9	R604	1:K5	1-B0
C614	1:M5	1-E0	IC511	1:H16	1-J4	R508	1:L21	1-D7	R605	1:K5	1-B0
C615	1:P5	1-F0	#IC512	1:C17	1-K3	R509	1:K14	1-B7	R606	1:F9	1-B1
C616	1:N4	1-F0	#IC512	1:C17	1-L3	R510	1:J13	1-C8	R607	1:E8	1-D1
C617	1:N3	1-G0	#IC512	1:C17	1-M2	R511	1:J9	1-B6	R608	1:L5	1-D0
C618	1:M5	1-H0	#IC512	1:C17	1-V5	R512	1:J8	1-C6	R609	1:N4	1-D0
C619	1:G15	1-I0	#IC512	1:C17	1-L2	R513	1:D10	1-K3	R610	1:C9	1-F4
C620	1:J16	1-J0	IC513	1:G9	1-A7	R514	1:J9	1-C4	R611	1:M5	1-D1
C621	1:K16	1-J0	IC601	1:M4	1-E0	R515	1:J9	1-C5	R612	1:K8	1-D2
C622	1:H15	1-H0	IC601	1:M4	1-T3	R516	1:F16	1-D6	R613	1:K4	1-D1
C623	1:C9	1-L0	IC601	1:M4	1-C0	R518	1:D3	1-B7	R614	1:L4	1-E1
C624	1:B6	1-N1	IC601	1:M4	1-F1	R519	1:D3	1-B7	R615	1:K8	1-G2
C625	1:C6	1-N1	IC601	1:M4	1-G0	R520	1:H15	1-E7	R616	1:L9	1-G1
C626	1:L14	1-O0	IC602	1:K15	1-H0	R521	1:M22	1-D8	R617	1:L8	1-G2
C627	1:E10	1-M0	IC602	1:K15	1-C7	R522	1:M22	1-D8	R618	1:L9	1-H1
C628	1:E8	1-M0	IC602	1:K15	1-K0	R523	1:B6	1-D4	R619	1:N4	1-E0
						R524	1:K21	1-E5	R620	1:M5	1-F0
									R621	1:P2	1-F0

Device	PCB	Circuit	Device	PCB	Circuit	Device	PCB	Circuit	Device	PCB	Circuit
R622	1:L5	1-C0	R691	1:C3	1-T1	TP616	2:B19	1-B4			
R623	1:N3	1-G0	R692	1:F8	1-C1	TP617	2:B19	1-B3			
R624	1:N3	1-G0	R693	1:C10	1-F4	TP618	2:D10	1-L1			
R625	1:H15	1-I1	R694	1:N18	1-H5	TP619	2:B20	1-R1			
R626	1:P3	1-H0	R695	1:E18	1-I5	TP620	2:E3	1-Q1			
R627	1:J16	1-H0	R696	1:G16	1-I4						
R628	1:G15	1-I0	R697	1:C11	1-L4	X501	1:N21	1-G6			
R629	1:G15	1-I0	R698	1:J15	1-M3	#X502	1:J13	1-J6			
R630	1:D8	1-M0	R699	1:C11	1-G3						
R631	1:E8	1-M0	R700	1:C13	1-O8						
R632	1:K16	1-J0	R701	1:C13	1-P8						
R633	1:L15	1-K0	R702	1:C13	1-P8						
R634	1:L16	1-K0	R703	1:D13	1-P8						
R635	1:E10	1-J1	R704	1:C14	1-P8						
R636	1:D8	1-K1	R705	1:C15	1-Q8						
R637	1:C8	1-L0	R706	1:C15	1-Q8						
R638	1:C8	1-L0	R707	1:C15	1-Q8						
R639	1:B5	1-B4	R708	1:E3	1-P1						
R640	1:C8	1-L0	#R710	1:D5	1-S1						
R641	1:K14	1-N0	#R711	1:D5	1-U1						
R642	1:D8	1-M1	#R712	1:D13	1-L2						
R643	1:M15	1-N0	#R713	1:C5	1-S1						
R644	1:J14	1-N0	#R714	1:B16	1-N4						
R645	1:C5	1-O1	#R715	1:B16	1-N4						
R646	1:K14	1-O0	R720	1:E15	1-C6						
R647	1:K13	1-O0	R721	1:D16	1-C6						
R648	1:D10	1-M2	#R722	1:D16	1-C6						
R649	1:D6	1-V1	#R723	1:D16	1-C6						
R650	1:D8	1-V1	R724	1:E16	1-D6						
R651	1:C3	1-B9	R725	1:E15	1-D7						
R652	1:G7	1-S2	R726	1:E15	1-D7						
R653	1:F7	1-T2	R727	1:F16	1-E6						
R654	1:F7	1-T2	#R735	1:J21	1-G5						
R655	1:F6	1-U2	#R751	1:G7	1-S2						
R656	1:F6	1-T2	RV507	1:L22	1-D7						
R657	1:G6	1-T1	#RV508	1:K22	1-G4						
R658	1:D5	1-V1									
R659	1:F5	1-T1	S1	1:L2	1-V9						
R660	1:F6	1-U2	S2	1:B2	1-V9						
R661	1:E6	1-V2	S3	1:E20	1-U8						
R662	1:G8	1-W2	S8	1:H5	1-V8						
R663	1:G8	1-V2	S13	1:B4	1-V7						
R664	1:D5	1-V1	S14	1:B10	1-V7						
R665	1:D4	1-U1	S15	1:B14	1-V6						
R666	1:D8	1-W0	SK505	1:K19	1-G6						
R667	1:G2	1-U0	#SPEC1	1:M14	1-T4						
R668	1:D4	1-U0	#SPEC2	1:M14	1-T4						
R669	1:F2	1-U0	#SPEC3	1:M14	1-U4						
R670	1:F2	1-T0	#SPEC4	1:M13	1-U4						
R671	1:F2	1-T0	#SPEC5	1:M13	1-U4						
R672	1:C5	1-S0	#SPEC6	1:M13	1-V4						
R673	1:C4	1-S0	#SPEC7	1:M13	1-V4						
R674	1:C4	1-S0	#SPEC8	1:M12	1-V4						
R675	1:C3	1-S0	#SPEC9	1:M12	1-W4						
R676	1:D3	1-R1	#SPEC10	1:M12	1-W4						
R677	1:D3	1-R0									
R678	1:F4	1-Q0	TP601	2:J5	1-A3						
R679	1:E3	1-Q0	TP602	2:K7	1-G1						
R680	1:D3	1-T1	TP603	2:M9	1-I2						
R681	1:F3	1-P0	TP604	2:L14	1-O0						
R682	1:F4	1-Q0	TP605	2:F3	1-P0						
R683	1:F4	1-Q0	TP606	2:F1	1-T1						
R684	1:L9	1-G1	TP607	2:E5	1-U2						
R685	1:G2	1-V0	TP608	2:B8	1-B3						
R686	1:H8	1-V2	TP609	2:K21	1-G9						
R687	1:L6	1-A0	TP610	2:E19	1-M8						
R688	1:K6	1-A0	TP611	2:F16	1-E6						
R689	1:F11	1-I2	TP614	1:C11	1-I2						
R690	1:F10	1-J2	TP615	2:G7	1-R4						