

7.5 T2000-500/-600 RF PCB

T2000-500/-600 Parts List (IPN 220-01205-14)

Parts List Amendments

Ref	Var	IPN	Description	Ref	Var	IPN	Description
C1		015-24100-08	CAP CER 0805 CHIP 1N 10% X7R 50V	C138		015-21680-01	CAP CER 0805 CHIP 6P8 +/-0.25P NPO 50V
C2		015-24100-08	CAP CER 0805 CHIP 1N 10% X7R 50V	C139		015-22330-01	CAP CER 0805 CHIP 33P 5% NPO 50V
C3		015-24100-08	CAP CER 0805 CHIP 1N 10% X7R 50V	C140		015-21680-01	CAP CER 0805 CHIP 6P8 +/-0.25P NPO 50V
C100		015-23150-01	CAP CER 0805 CHIP 150P 5% NPO 50V	C141		015-22470-01	CAP CER 0805 CHIP 47P 5% NPO 50V
*C101	5XX	015-21820-01	CAP CER 0805 CHIP 8P2 +/-0.25P NPO 50V	C142		015-22120-01	CAP CER 0805 CHIP 12P 5% NPO 50V
*C101	5XXL	015-21820-01	CAP CER 0805 CHIP 8P2 +/-0.25P NPO 50V	C145		015-23100-01	CAP CER 0805 CHIP 100P 5% NPO 50V
*C101	6XX	015-22100-01	CAP CER 0805 CHIP 10P +/-0.5P NPO 50V	C146		015-24100-08	CAP CER 0805 CHIP 1N 10% X7R 50V
*C101	6XXL	015-22100-01	CAP CER 0805 CHIP 10P +/-0.5P NPO 50V	C147		015-25100-08	CAP CER 0805 CHIP 10N 10% X7R 50V
C102		015-23150-01	CAP CER 0805 CHIP 150P 5% NPO 50V	C148		015-22100-01	CAP CER 0805 CHIP 10P +/-0.5P NPO 50V
C104		015-06100-08	CAP CER 1206 CHIP 100N 10% X7R 50V	C149		015-23150-01	CAP CER 0805 CHIP 150P 5% NPO 50V
C105		015-21100-01	CAP CER 0805 CHIP 1P0 +/-0.25P NPO 50V	C150		015-23100-01	CAP CER 0805 CHIP 100P 5% NPO 50V
C106		015-22330-01	CAP CER 0805 CHIP 33P 5% NPO 50V	C151		015-06100-08	CAP CER 1206 CHIP 100N 10% X7R 50V
*C107	5XX	015-21390-01	CAP CER 0805 CHIP 3P9 +/-0.25P NPO 50V	C152		015-23100-01	CAP CER 0805 CHIP 100P 5% NPO 50V
*C107	5XXL	015-21390-01	CAP CER 0805 CHIP 3P9 +/-0.25P NPO 50V	#C152A		015-25100-08	CAP CER 0805 CHIP 10N 10% X7R 50V
*C107	6XX	015-21470-01	CAP CER 0805 CHIP 4P7 +/-0.25P NPO 50V	C153		020-57470-10	CAP ELECT AI RDL 4U7 50V LO ESR
*C107	6XXL	015-21470-01	CAP CER 0805 CHIP 4P7 +/-0.25P NPO 50V	#C153A		015-23100-01	CAP CER 0805 CHIP 100P 5% NPO 50V
C108		015-23150-01	CAP CER 0805 CHIP 150P 5% NPO 50V	C154		015-25100-08	CAP CER 0805 CHIP 10N 10% X7R 50V
C109		015-21220-01	CAP CER 0805 CHIP 2P2 +/-0.25P NPO 50V	C155		015-23100-01	CAP CER 0805 CHIP 100P 5% NPO 50V
*C110	5XX	015-22390-01	CAP CER 0805 CHIP 39P 5% NPO 50V	#C156		036-10000-00	RES M/F 0805 CHIP ZERO OHM
*C110	5XXL	015-22390-01	CAP CER 0805 CHIP 39P 5% NPO 50V	C157		015-06100-08	CAP CER 1206 CHIP 100N 10% X7R 50V
*C110	6XX	015-22180-01	CAP CER 0805 CHIP 18P 5% NPO 50V	C158		015-24100-08	CAP CER 0805 CHIP 1N 10% X7R 50V
*C110	6XXL	015-22180-01	CAP CER 0805 CHIP 18P 5% NPO 50V	C174		020-58470-05	CAP ELECT AI RDL 47M 16V 6.3X7MM
*C111	5XX	015-21680-01	CAP CER 0805 CHIP 6P8 +/-0.25P NPO 50V	C175		015-06100-08	CAP CER 1206 CHIP 100N 10% X7R 50V
*C111	5XXL	015-21680-01	CAP CER 0805 CHIP 6P8 +/-0.25P NPO 50V	C176		015-06100-08	CAP CER 1206 CHIP 100N 10% X7R 50V
*C111	6XX	015-21560-01	CAP CER 0805 CHIP 5P6 +/-0.25P NPO 50V	C179		015-25100-08	CAP CER 0805 CHIP 10N 10% X7R 50V
*C111	6XXL	015-21560-01	CAP CER 0805 CHIP 5P6 +/-0.25P NPO 50V	C180		015-06100-08	CAP CER 1206 CHIP 100N 10% X7R 50V
C112		015-21150-01	CAP CER 0805 CHIP 1P5 +/-0.25P NPO 50V	C181		015-06100-08	CAP CER 1206 CHIP 100N 10% X7R 50V
C113		015-21220-01	CAP CER 0805 CHIP 2P2 +/-0.25P NPO 50V	C182		015-23150-01	CAP CER 0805 CHIP 150P 5% NPO 50V
*C114	5XX	015-22390-01	CAP CER 0805 CHIP 39P 5% NPO 50V	C184		015-23150-01	CAP CER 0805 CHIP 150P 5% NPO 50V
*C114	5XXL	015-22390-01	CAP CER 0805 CHIP 39P 5% NPO 50V	C185		015-25100-08	CAP CER 0805 CHIP 10N 10% X7R 50V
*C114	6XX	015-22180-01	CAP CER 0805 CHIP 18P 5% NPO 50V	C186		015-25100-08	CAP CER 0805 CHIP 10N 10% X7R 50V
*C114	6XXL	015-22180-01	CAP CER 0805 CHIP 18P 5% NPO 50V	C187		015-24100-08	CAP CER 0805 CHIP 1N 10% X7R 50V
*C115	5XX	015-22100-01	CAP CER 0805 CHIP 10P +/-0.25P NPO 50V	C188		015-23100-01	CAP CER 0805 CHIP 100P 5% NPO 50V
*C115	5XXL	015-22100-01	CAP CER 0805 CHIP 10P +/-0.25P NPO 50V	C189		015-23470-08	CAP CER 0805 CHIP 470P 10% X7R 50V
*C115	6XX	015-21820-01	CAP CER 0805 CHIP 8P2 +/-0.25P NPO 50V	C190		015-23470-08	CAP CER 0805 CHIP 470P 10% X7R 50V
*C115	6XXL	015-21820-01	CAP CER 0805 CHIP 8P2 +/-0.25P NPO 50V	C191		015-24100-08	CAP CER 0805 CHIP 1N 10% X7R 50V
C117		015-21150-01	CAP CER 0805 CHIP 1P5 +/-0.25P NPO 50V	C192		015-22330-01	CAP CER 0805 CHIP 33P 5% NPO 50V
C118		015-21220-01	CAP CER 0805 CHIP 2P2 +/-0.25P NPO 50V	C193		020-57470-10	CAP ELECT AI RDL 4U7 50V LO ESR
*C119	5XX	015-22390-01	CAP CER 0805 CHIP 39P 5% NPO 50V	C194		015-23150-01	CAP CER 0805 CHIP 150P 5% NPO 50V
*C119	5XXL	015-22390-01	CAP CER 0805 CHIP 39P 5% NPO 50V	C195		015-23150-01	CAP CER 0805 CHIP 150P 5% NPO 50V
*C119	6XX	015-22180-01	CAP CER 0805 CHIP 18P 5% NPO 50V	C197		015-06100-08	CAP CER 1206 CHIP 100N 10% X7R 50V
*C119	6XXL	015-22180-01	CAP CER 0805 CHIP 18P 5% NPO 50V	C198		015-21100-01	CAP CER 0805 CHIP 1P0 +/-0.25P NPO 50V
*C121	5XX	015-21680-01	CAP CER 0805 CHIP 6P8 +/-0.25P NPO 50V	C199		015-24100-08	CAP CER 0805 CHIP 1N 10% X7R 50V
*C121	5XXL	015-21680-01	CAP CER 0805 CHIP 6P8 +/-0.25P NPO 50V	C200		015-25100-08	CAP CER 0805 CHIP 10N 10% X7R 50V
*C121	6XX	015-21560-01	CAP CER 0805 CHIP 5P6 +/-0.25P NPO 50V	C201		015-25100-08	CAP CER 0805 CHIP 10N 10% X7R 50V
*C121	6XXL	015-21560-01	CAP CER 0805 CHIP 5P6 +/-0.25P NPO 50V	C202		015-24100-08	CAP CER 0805 CHIP 1N 10% X7R 50V
*C122	5XX	015-21390-01	CAP CER 0805 CHIP 3P9 +/-0.25P NPO 50V	C204		015-23150-01	CAP CER 0805 CHIP 150P 5% NPO 50V
*C122	5XXL	015-21390-01	CAP CER 0805 CHIP 3P9 +/-0.25P NPO 50V	C205		015-25220-08	CAP CER 0805 CHIP 22N 10% X7R 50V
*C122	6XX	015-21470-01	CAP CER 0805 CHIP 4P7 +/-0.25P NPO 50V	C206		015-06100-08	CAP CER 1206 CHIP 100N 10% X7R 50V
*C122	6XXL	015-21470-01	CAP CER 0805 CHIP 4P7 +/-0.25P NPO 50V	C207		015-25100-08	CAP CER 0805 CHIP 10N 10% X7R 50V
C123		015-23150-01	CAP CER 0805 CHIP 150P 5% NPO 50V	C208		015-25100-08	CAP CER 0805 CHIP 10N 10% X7R 50V
C124		015-21560-01	CAP CER 0805 CHIP 5P6 +/-0.25P NPO 50V	C209		015-25100-08	CAP CER 0805 CHIP 10N 10% X7R 50V
C125		015-21270-01	CAP CER 0805 CHIP 2P7 +/-0.25P NPO 50V	C210		015-25100-08	CAP CER 0805 CHIP 10N 10% X7R 50V
C126		015-21560-01	CAP CER 0805 CHIP 5P6 +/-0.25P NPO 50V	C211		015-23180-01	CAP CER 0805 CHIP 180P 5% NPO 50V
C127		015-22120-01	CAP CER 0805 CHIP 12P 5% NPO 50V	C212		015-21560-01	CAP CER 0805 CHIP 5P6 +/-0.25P NPO 50V
C128		015-22330-01	CAP CER 0805 CHIP 33P 5% NPO 50V	C213		020-58470-05	CAP ELECT AI RDL 47M 16V 6.3X7MM
C129		015-25100-08	CAP CER 0805 CHIP 10N 10% X7R 50V	C214		015-25100-08	CAP CER 0805 CHIP 10N 10% X7R 50V
C130		015-25100-08	CAP CER 0805 CHIP 10N 10% X7R 50V	C215		020-57470-10	CAP ELECT AI RDL 4U7 50V LO ESR
C132		015-23150-01	CAP CER 0805 CHIP 150P 5% NPO 50V	C216		015-25100-08	CAP CER 0805 CHIP 10N 10% X7R 50V
C133		015-22470-01	CAP CER 0805 CHIP 47P 5% NPO 50V	C217		020-58470-05	CAP ELECT AI RDL 47M 16V 6.3X7MM
C134		015-21680-01	CAP CER 0805 CHIP 6P8 +/-0.25P NPO 50V	C218		020-57470-10	CAP ELECT AI RDL 4U7 50V LO ESR
C135		015-22330-01	CAP CER 0805 CHIP 33P 5% NPO 50V	C219		020-57470-10	CAP ELECT AI RDL 4U7 50V LO ESR
C136		015-21680-01	CAP CER 0805 CHIP 6P8 +/-0.25P NPO 50V	C220		022-55100-10	CAP MYLAR AI 10N 5% 63V POTTED
C137		015-23100-01	CAP CER 0805 CHIP 100P 5% NPO 50V	C221		022-57100-02	CAP MYLAR AI 1M 20% 50V POTTED

Ref	Var	IPN	Description	Ref	Var	IPN	Description
C222		022-06100-15	CAP MET POLYSTR 100N 5% 50V 5.6MM HI	*C322	6XXL	015-22220-01	CAP CER 0805 CHIP 22P 5% NPO 50V
C223		020-57470-10	CAP ELECT AI RDL 4U7 50V LO ESR	*C323	5XX	015-03100-03	CAP CER CHIP 100P 5% NPO 500V HIQ GRH11
C223A		015-21820-01	CAP CER 0805 CHIP 8P2 +/-0.25P NPO 50V	*C323	6XX	015-03100-03	CAP CER CHIP 100P 5% NPO 500V HIQ GRH11
C224		015-24100-08	CAP CER 0805 CHIP 1N 10% X7R 50V	*C324	5XX	015-02390-03	CAP CER CHIP 39P 5% NPO 500V HIQ GRH111
C225		015-23150-01	CAP CER 0805 CHIP 150P 5% NPO 50V	*C324	6XX	015-02330-03	CAP CER CHIP 33P 5% NPO 500V HIQ GRH111
C226		015-23150-01	CAP CER 0805 CHIP 150P 5% NPO 50V	*C325	5XX	015-02390-03	CAP CER CHIP 39P 5% NPO 500V HIQ GRH111
*C227	5XX	015-21820-01	CAP CER 0805 CHIP 8P2 +/-0.25P NPO 50V	*C325	6XX	015-02390-03	CAP CER CHIP 39P 5% NPO 500V HIQ GRH111
*C227	5XXL	015-21820-01	CAP CER 0805 CHIP 8P2 +/-0.25P NPO 50V	C326		015-03100-06	CAP CER 1210 CHIP 100P NPO 500V GRM42-2
*C227	6XX	015-21560-01	CAP CER 0805 CHIP 5P6 +/-0.25P NPO 50V	*C327	5XX	029-02470-02	CAP MICA 5MM CASE 47P 5%
*C227	6XXL	015-21560-01	CAP CER 0805 CHIP 5P6 +/-0.25P NPO 50V	*C327	5XXL	015-02220-06	CAP CER 1210 CHIP 22P 5% NPO 500V GRM4
C228		015-25220-08	CAP CER 0805 CHIP 22N 10% X7R 50V	*C327	6XXL	015-02180-06	CAP CER 1210 CHIP 18P NPO 500V GRM42-2
C229		020-58470-05	CAP ELECT AI RDL 47M 16V 6.3X7MM	C328		020-07470-04	CAP ELECT RADL 4M7 25V 20% 8X13MM SOLID
C230		015-25100-08	CAP CER 0805 CHIP 10N 10% X7R 50V	*C329	5XX	029-02470-02	CAP MICA 5MM CASE 47P 5%
C231		015-25100-08	CAP CER 0805 CHIP 10N 10% X7R 50V	*C329	5XXL	015-02220-06	CAP CER 1210 CHIP 22P 5% NPO 500V GRM4
*C232	5XX	015-21820-01	CAP CER 0805 CHIP 8P2 +/-0.25P NPO 50V	*C329	6XXL	015-02180-06	CAP CER 1210 CHIP 18P NPO 500V GRM42-2
*C232	5XXL	015-21820-01	CAP CER 0805 CHIP 8P2 +/-0.25P NPO 50V	*C330	5XX	015-01680-06	CAP CER 1210 CHIP 6P8 NPO 500V GRM42-2
*C232	6XX	015-21560-01	CAP CER 0805 CHIP 5P6 +/-0.25P NPO 50V	*C330	5XXL	015-01560-06	CAP CER 1210 CHIP 5P6 NPO 500V GRM42-2
*C232	6XXL	015-21560-01	CAP CER 0805 CHIP 5P6 +/-0.25P NPO 50V	*C330	6XX	015-01470-06	CAP CER 1210 CHIP 4P7 NPO 500V GRM42-2
C233		020-57470-10	CAP ELECT AI RDL 4U7 50V LO ESR	*C331	5XX	015-01560-06	CAP CER 1210 CHIP 5P6 NPO 500V GRM42-2
C234		020-57470-10	CAP ELECT AI RDL 4U7 50V LO ESR	*C331	5XXL	015-01560-06	CAP CER 1210 CHIP 5P6 NPO 500V GRM42-2
C235		015-06100-08	CAP CER 1206 CHIP 100N 10% X7R 50V	*C331	6XX	015-01470-06	CAP CER 1210 CHIP 4P7 NPO 500V GRM42-2
C236		015-23150-01	CAP CER 0805 CHIP 150P 5% NPO 50V	*C331	6XXL	015-01470-06	CAP CER 1210 CHIP 4P7 NPO 500V GRM42-2
*C237	5XX	015-21680-01	CAP CER 0805 CHIP 6P8 +/-0.25P NPO 50V	*C332	5XX	015-02100-06	CAP CER 1210 CHIP 2P2 5% NPO 500V GRM42
*C237	5XXL	015-21680-01	CAP CER 0805 CHIP 6P8 +/-0.25P NPO 50V	*C332	5XXL	015-02220-06	CAP CER 1210 CHIP 22P 5% NPO 500V GRM4
*C237	6XX	015-21560-01	CAP CER 0805 CHIP 5P6 +/-0.25P NPO 50V	*C332	6XX	015-02100-06	CAP CER 1210 CHIP 10P 5% NPO 500V GRM42
*C237	6XXL	015-21560-01	CAP CER 0805 CHIP 5P6 +/-0.25P NPO 50V	*C332	6XXL	015-01560-06	CAP CER 1210 CHIP 10P 5% NPO 500V GRM42
*C238	5XX	015-22270-01	CAP CER 0805 CHIP 27P 5% NPO 50V	C333		015-23150-01	CAP CER 0805 CHIP 150P 5% NPO 50V
*C238	5XXL	015-22270-01	CAP CER 0805 CHIP 27P 5% NPO 50V	C334		015-23150-01	CAP CER 0805 CHIP 150P 5% NPO 50V
*C238	6XX	015-22180-01	CAP CER 0805 CHIP 18P 5% NPO 50V	*C335	5XX	015-01220-06	CAP CER 1210 CHIP 2P2 NPO 500V GRM42-2
*C238	6XXL	015-22180-01	CAP CER 0805 CHIP 18P 5% NPO 50V	*C335	5XXL	015-01220-06	CAP CER 1210 CHIP 2P2 NPO 500V GRM42-2
C239		015-21100-01	CAP CER 0805 CHIP 1P0 +/-0.25P NPO 50V	C336		015-03100-06	CAP CER 1210 CHIP 100P NPO 500V GRM42-2
C240		015-23150-01	CAP CER 0805 CHIP 150P 5% NPO 50V	C337		015-23150-01	CAP CER 0805 CHIP 150P 5% NPO 50V
C241		015-23150-01	CAP CER 0805 CHIP 150P 5% NPO 50V	C338		015-02100-01	CAP CER 1206 CHIP 10P 5% N150 50V
C242		015-25100-08	CAP CER 0805 CHIP 10N 10% X7R 50V	*C339	5XX	015-01470-06	CAP CER 1210 CHIP 4P7 NPO 500V GRM42-2
C243		015-23150-01	CAP CER 0805 CHIP 150P 5% NPO 50V	*C339	5XXL	015-01470-06	CAP CER 1210 CHIP 4P7 NPO 500V GRM42-2
C244		015-21560-01	CAP CER 0805 CHIP 5P6 +/-0.25P NPO 50V	*C339	6XX	015-01390-06	CAP CER 1210 CHIP 3P9 NPO 500V GRM42-2
C245		015-21270-01	CAP CER 0805 CHIP 2P7 +/-0.25P NPO 50V	*C339	6XXL	015-01390-06	CAP CER 1210 CHIP 3P9 NPO 500V GRM42-2
C246		015-25100-08	CAP CER 0805 CHIP 10N 10% X7R 50V	C340		015-01390-06	CAP CER 1210 CHIP 3P9 NPO 500V GRM42-2
C247		015-21820-01	CAP CER 0805 CHIP 8P2 +/-0.25P NPO 50V	*C341	5XX	015-01470-06	CAP CER 1210 CHIP 4P7 NPO 500V GRM42-2
C248		015-25100-08	CAP CER 0805 CHIP 10N 10% X7R 50V	*C341	5XXL	015-01470-06	CAP CER 1210 CHIP 4P7 NPO 500V GRM42-2
C249		015-23100-01	CAP CER 0805 CHIP 100P 5% NPO 50V	*C341	6XX	015-01390-06	CAP CER 1210 CHIP 3P9 NPO 500V GRM42-2
C250		015-22820-01	CAP CER 0805 CHIP 82P 5% NPO 50V	*C341	6XXL	015-01390-06	CAP CER 1210 CHIP 3P9 NPO 500V GRM42-2
C251		015-23100-01	CAP CER 0805 CHIP 100P 5% NPO 50V	*C342	5XX	015-01390-06	CAP CER 1210 CHIP 3P9 NPO 500V GRM42-2
C252		015-23180-01	CAP CER 0805 CHIP 180P 5% NPO 50V	*C342	5XXL	015-01390-06	CAP CER 1210 CHIP 3P9 NPO 500V GRM42-2
C253		015-22820-01	CAP CER 0805 CHIP 82P 5% NPO 50V	*C342	6XX	015-01330-06	CAP CER 1210 CHIP 3P3 NPO 500V GRM42-2
C254		015-23150-01	CAP CER 0805 CHIP 150P 5% NPO 50V	*C342	6XXL	015-01330-06	CAP CER 1210 CHIP 3P3 NPO 500V GRM42-2
C255		015-21560-01	CAP CER 0805 CHIP 5P6 +/-0.25P NPO 50V	*C343	5XX	015-01270-06	CAP CER 1210 CHIP 2P7 NPO 200V GRM42-2
C257		015-22180-01	CAP CER 0805 CHIP 18P 5% NPO 50V	*C343	5XXL	015-01270-06	CAP CER 1210 CHIP 2P7 NPO 200V GRM42-2
C260		020-57470-10	CAP ELECT AI RDL 4U7 50V LO ESR	*C343	6XX	015-01390-06	CAP CER 1210 CHIP 3P9 NPO 500V GRM42-2
C300		015-03100-06	CAP CER 1210 CHIP 100P NPO 500V GRM42-2	*C343	6XXL	015-01390-06	CAP CER 1210 CHIP 3P9 NPO 500V GRM42-2
C301		015-23150-01	CAP CER 0805 CHIP 150P 5% NPO 50V	C344		015-01390-06	CAP CER 1210 CHIP 3P9 NPO 500V GRM42-2
*C302	5XX	015-21680-01	CAP CER 0805 CHIP 6P8 +/-0.25P NPO 50V	C345		015-23150-01	CAP CER 0805 CHIP 150P 5% NPO 50V
*C302	5XXL	015-21680-01	CAP CER 0805 CHIP 6P8 +/-0.25P NPO 50V	*C346	5XX	015-21390-01	CAP CER 0805 CHIP 3P9 +/-0.25P NPO 50V
*C302	6XX	015-21680-01	CAP CER 0805 CHIP 6P8 +/-0.25P NPO 50V	*C346	5XXL	015-21390-01	CAP CER 0805 CHIP 3P9 +/-0.25P NPO 50V
*C302	6XXL	015-21680-01	CAP CER 0805 CHIP 6P8 +/-0.25P NPO 50V	*C346	6XX	015-21220-01	CAP CER 0805 CHIP 2P2 +/-0.25P NPO 50V
C303		015-02100-01	CAP CER 1206 CHIP 10P 5% N150 50V	*C346	6XXL	015-21220-01	CAP CER 0805 CHIP 2P2 +/-0.25P NPO 50V
C304		015-24100-08	CAP CER 0805 CHIP 1N 10% X7R 50V	*C347	5XX	015-21270-01	CAP CER 0805 CHIP 2P7 +/-0.25P NPO 50V
C305		015-2220-01	CAP CER 0805 CHIP 12P 5% NPO 50V	*C347	5XXL	015-21270-01	CAP CER 0805 CHIP 2P7 +/-0.25P NPO 50V
C306		015-22120-01	CAP CER 0805 CHIP 22P 5% NPO 50V	*C347	6XX	015-21220-01	CAP CER 0805 CHIP 2P2 +/-0.25P NPO 50V
C307		015-06100-08	CAP CER 1206 CHIP 100N 10% X7R 50V	*C347	6XXL	015-21220-01	CAP CER 0805 CHIP 2P2 +/-0.25P NPO 50V
*C308	5XX	015-22120-01	CAP CER 0805 CHIP 12P 5% NPO 50V	C348		015-23150-01	CAP CER 0805 CHIP 150P 5% NPO 50V
*C308	5XXL	015-22120-01	CAP CER 0805 CHIP 12P 5% NPO 50V	C349		015-23150-01	CAP CER 0805 CHIP 150P 5% NPO 50V
*C308	6XX	015-22100-01	CAP CER 0805 CHIP 10P +/-0.5P NPO 50V	*C350	5XX	015-21390-01	CAP CER 0805 CHIP 3P9 +/-0.25P NPO 50V
*C308	6XXL	015-22100-01	CAP CER 0805 CHIP 10P +/-0.5P NPO 50V	*C350	5XXL	015-21390-01	CAP CER 0805 CHIP 3P9 +/-0.25P NPO 50V
*C309	5XX	015-22220-01	CAP CER 0805 CHIP 22P 5% NPO 50V	*C350	6XX	015-21330-01	CAP CER 0805 CHIP 3P3 +/-0.25P NPO 50V
*C309	5XXL	015-22220-01	CAP CER 0805 CHIP 22P 5% NPO 50V	*C350	6XXL	015-21330-01	CAP CER 0805 CHIP 3P3 +/-0.25P NPO 50V
C310		015-24100-08	CAP CER 0805 CHIP 1N 10% X7R 50V	C351		015-06100-08	CAP CER 1206 CHIP 100N 10% X7R 50V
C311		015-23150-01	CAP CER 0805 CHIP 150P 5% NPO 50V	*C352	5XX	015-21100-05	CAP CER 0805 CHIP 1P0+0.1PFD 200V GRM4
C312		015-23150-01	CAP CER 0805 CHIP 150P 5% NPO 50V	*C352	5XXL	015-21100-05	CAP CER 0805 CHIP 1P0+0.1PFD 200V GRM
C313		015-23150-01	CAP CER 0805 CHIP 150P 5% NPO 50V	*C352	6XX	015-21120-01	CAP CER 0805 CHIP 1P2 +/-0.25 NPO 50V
*C314	5XX	015-22120-01	CAP CER 0805 CHIP 12P 5% NPO 50V	*C352	6XXL	015-21120-01	CAP CER 0805 CHIP 1P2 +/-0.25 NPO 50V
*C314	5XXL	015-22120-01	CAP CER 0805 CHIP 12P 5% NPO 50V	C353		015-24100-08	CAP CER 0805 CHIP 1N 10% X7R 50V
*C314	6XX	015-22100-01	CAP CER 0805 CHIP 10P +/-0.5P NPO 50V	C355		015-25100-08	CAP CER 0805 CHIP 10N 10% X7R 50V
*C314	6XXL	015-22120-01	CAP CER 0805 CHIP 12P 5% NPO 50V	C356		015-23150-01	CAP CER 0805 CHIP 150P 5% NPO 50V
C315		015-23150-01	CAP CER 0805 CHIP 150P 5% NPO 50V	C357		015-06100-08	CAP CER 1206 CHIP 100N 10% X7R 50V
C316		015-23150-01	CAP CER 0805 CHIP 150P 5% NPO 50V	C358		015-22150-01	CAP CER 0805 CHIP 15P 5% NPO 50V
C317		015-23150-01	CAP CER 0805 CHIP 150P 5% NPO 50V	C359		015-06100-08	CAP CER 1206 CHIP 100N 10% X7R 50V
C318		015-23150-01	CAP CER 0805 CHIP 150P 5% NPO 50V	C360		015-23150-01	CAP CER 0805 CHIP 150P 5% NPO 50V
C318A		015-22120-01	CAP CER 0805 CHIP 12P 5% NPO 50V	C361		015-21820-01	CAP CER 0805 CHIP 8P2 +/-0.25P NPO 50V
C319		015-03100-06	CAP CER 1210 CHIP 100P NPO 500V GRM42-2	C362		015-22330-01	CAP CER 0805 CHIP 33P 5% NPO 50V
C320		015-02330-06	CAP CER 1210 CHIP 33P NPO 500V GRM42-2	C363		015-22330-01	CAP CER 0805 CHIP 33P 5% NPO 50V
*C321	5XX	015-02390-03	CAP CER CHIP 39P 5% NPO 500V HIQ GRH111	C364		015-24100-08	CAP CER 0805 CHIP 1N 10% X7R 50V
*C321	5XXL	015-02390-03	CAP CER CHIP 39P 5% NPO 500V HIQ GRH11	*C365	5XX	015-27100-10	CAP CER 0805 CHIP 1M +80-20% Y5V 16V
*C321	6XX	015-02330-03	CAP CER CHIP 33P 5% NPO 500V HIQ GRH111	*C365	5XXL	015-27100-10	CAP CER 0805 CHIP 1M +80-20% Y5V 16V
*C321	6XXL	015-02330-03	CAP CER CHIP 33P 5% NPO 500V HIQ GRH11	C403		015-23470-08	CAP CER 0805 CHIP 470P 10% X7R 50V
*C322	6XX	015-22220-01	CAP CER 0805 CHIP 22P 5% NPO 50V	C410		020-57470-10	CAP ELECT AI RDL 4U7 50V LO ESR

Ref	Var	IPN	Description	Ref	Var	IPN	Description
C411		015-06100-08	CAP CER 1206 CHIP 100N 10% X7R 50V	*L300	5XXL	052-08335-10	COIL A/W 1T/3.5MM SMD 0.8MM WIRE
C412		020-58470-05	CAP ELECT AI RDL 47M 16V 6.3X7MM	*L300	6XX	052-08323-10	COIL A/W 1T/2.3MM SMD 0.8MM WIRE
C413		015-06100-08	CAP CER 1206 CHIP 100N 10% X7R 50V	*L300	6XXL	052-08323-10	COIL A/W 1T/2.3MM SMD 0.8MM WIRE
C414		020-09470-05	CAP ELECT RADL 470M 16V 10X12.5MM	L301		057-00015-00	IND FXD 15NH +-5% 1206 CHIP MUR LQN1A15NJ0
C415		020-19100-02	CAP ELECT RADL 1000M 16V 12X20MM	L302		056-10330-00	IND FXD SMD 330NH 3.2*2.5*1.6 SIEMENS SMIDO
C416		015-24100-08	CAP CER 0805 CHIP 1N 10% X7R 50V	*L302	5XX	052-08130-15	COIL A/W 1.5T/3.0MM HOR 0.8MM WIRE
C419		015-06100-08	CAP CER 1206 CHIP 100N 10% X7R 50V	*L302	5XXL	052-08130-15	COIL A/W 1.5T/3.0MM HOR 0.8MM WIRE
C420		015-06100-08	CAP CER 1206 CHIP 100N 10% X7R 50V	*L302	6XX	052-08125-15	COIL A/W 1.5T/2.5MM HOR 0.8MM WIRE
C423		020-08560-09	CAP ELECT RADL 56M 50V 6.3X15.5MM L/S	*L302	6XXL	052-08125-15	COIL A/W 1.5T/2.5MM HOR 0.8MM WIRE
C424		020-57470-10	CAP ELECT AI RDL 4U7 50V LO ESR	L303		056-00021-60	IND FXD 330NH 6.6X2.7MM AXIAL NON MAGNETI
C425		020-57470-10	CAP ELECT AI RDL 4U7 50V LO ESR	L304		030-50000-00	LINK WIRE AI ZERO OHM 0.6MM WIRE
C426		015-25100-08	CAP CER 0805 CHIP 10N 10% X7R 50V	L305		057-00015-00	IND FXD 15NH +-5% 1206 CHIP MUR LQN1A15NJ0
C427		020-57470-10	CAP ELECT AI RDL 4U7 50V LO ESR	L306		057-10005-03	IND 0805 BLM21B05 EMI SUPRSN 5 OHM AT 100M
C428		020-57470-10	CAP ELECT AI RDL 4U7 50V LO ESR	L307		030-50000-00	LINK WIRE AI ZERO OHM 0.6MM WIRE
C429		015-24100-08	CAP CER 0805 CHIP 1N 10% X7R 50V	L308		052-08130-65	COIL A/W 6.5T/3.0MM HOR 0.8MM WIRE
C430		020-08560-09	CAP ELECT RADL 56M 50V 6.3X15.5MM L/S	L309		030-50000-00	LINK WIRE AI ZERO OHM 0.6MM WIRE
C431		015-06100-08	CAP CER 1206 CHIP 100N 10% X7R 50V	L310		052-08130-65	COIL A/W 6.5T/3.0MM HOR 0.8MM WIRE
C451		015-24100-08	CAP CER 0805 CHIP 1N 10% X7R 50V	L311		052-08130-65	COIL A/W 6.5T/3.0MM HOR 0.8MM WIRE
C455		015-24100-08	CAP CER 0805 CHIP 1N 10% X7R 50V	L312		056-00021-60	IND FXD 330NH 6.6X2.7MM AXIAL NON MAGNETI
D1		001-00012-90	(S) DIODE MR2520L OVERVOLT SUPPRESSOR	L313		052-08145-55	COIL A/W 5.5T/4.5MM HOR 0.8MM WIRE
D100		001-10000-99	(S) DIODE SMD BAV99 DUAL SWITCH SINGLE INLI	*L315	5XX	052-08130-65	COIL A/W 6.5T/3.0MM HOR 0.8MM WIRE
D101		001-10004-00	(S) DIODE SMD VARICAP BBY40 SOT23	*L315	6XX	052-08130-65	COIL A/W 6.5T/3.0MM HOR 0.8MM WIRE
D102		001-10004-00	(S) DIODE SMD VARICAP BBY40 SOT23	L316		030-50000-00	LINK WIRE AI ZERO OHM 0.6MM WIRE
D103		001-10004-00	(S) DIODE SMD VARICAP BBY40 SOT23	*L317	5XX	051-00005-28	COIL TAIT NO 528 HAIRPIN 17MM T550A
D105		001-10000-18	(S) DIODE SMD BAT18 BANDSWITCH SOT-23 SIN	*L317	6XX	051-00005-28	COIL TAIT NO 528 HAIRPIN 17MM T550A
D106		001-10000-18	(S) DIODE SMD BAT18 BANDSWITCH SOT-23 SIN	L318		052-08125-15	COIL A/W 1.5T/2.5MM HOR 0.8MM WIRE
D107		001-10000-17	(S) DIODE SMD DUAL BAT-17 SCHOTTKY SML SI	L319		056-00021-04	IND FXD 330NH AXIAL
D108		001-10000-17	(S) DIODE SMD DUAL BAT-17 SCHOTTKY SML SI	L320		052-08135-25	COIL A/W 2.5T/3.5MM HOR 0.8MM WIRE
D110		001-10000-17	(S) DIODE SMD DUAL BAT-17 SCHOTTKY SML SI	*L322	5XX	052-08145-15	COIL A/W 1.5T/4.5MM HOR 0.8MM WIRE
D111		001-10000-17	(S) DIODE SMD DUAL BAT-17 SCHOTTKY SML SI	*L322	5XXL	052-08145-15	COIL A/W 1.5T/4.5MM HOR 0.8MM WIRE
#D140A		001-10000-18	(S) DIODE SMD BAT18 BANDSWITCH SOT-23 SIN	*L322	6XX	052-08140-15	COIL A/W 1.5T/4.0MM HOR 0.8MM WIRE
D202		001-10000-70	(S) DIODE SMD BAV70 DUAL SWITCH SOT-23 CO	*L322	6XXL	052-08140-15	COIL A/W 1.5T/4.0MM HOR 0.8MM WIRE
D203		001-10004-00	(S) DIODE SMD VARICAP BBY40 SOT23	L323		052-08150-15	COIL A/W 1.5T/5.0MM HOR 0.8MM WIRE
D204		001-10004-20	(S) DIODE SMD VARICAP BBY42 SOT23	*L324	5XX	052-08150-15	COIL A/W 1.5T/5.0MM HOR 0.8MM WIRE
D205		001-10004-00	(S) DIODE SMD VARICAP BBY40 SOT23	*L324	5XXL	052-08150-15	COIL A/W 1.5T/5.0MM HOR 0.8MM WIRE
D206		001-10004-20	(S) DIODE SMD VARICAP BBY42 SOT23	*L324	6XX	052-08140-15	COIL A/W 1.5T/4.0MM HOR 0.8MM WIRE
D208		001-10000-18	(S) DIODE SMD BAT18 BANDSWITCH SOT-23 SIN	*L324	6XXL	052-08140-15	COIL A/W 1.5T/4.0MM HOR 0.8MM WIRE
D209		001-10000-18	(S) DIODE SMD BAT18 BANDSWITCH SOT-23 SIN	*L325	5XX	052-08135-25	COIL A/W 2.5T/3.5MM HOR 0.8MM WIRE
D210		001-10000-18	(S) DIODE SMD BAT18 BANDSWITCH SOT-23 SIN	*L325	5XXL	052-08135-25	COIL A/W 2.5T/3.5MM HOR 0.8MM WIRE
D211		001-10000-18	(S) DIODE SMD BAT18 BANDSWITCH SOT-23 SIN	*L325	6XX	052-08140-15	COIL A/W 1.5T/4.0MM HOR 0.8MM WIRE
D301		001-00013-45	(S) DIODE SCHOTTKY 1SS97/2	*L325	6XXL	052-08140-15	COIL A/W 1.5T/4.0MM HOR 0.8MM WIRE
D303		001-00012-50	(S) DIODE PIN UM9401 UHF PWR SWITCH	*L326	5XX	052-08135-25	COIL A/W 1.5T/3.5MM HOR 0.8MM WIRE
D304		001-00012-50	(S) DIODE PIN UM9401 UHF PWR SWITCH	*L326	5XXL	052-08135-25	COIL A/W 2.5T/3.5MM HOR 0.8MM WIRE
D305		001-10000-70	(S) DIODE SMD BAV70 DUAL SWITCH SOT-23 CO	*L326	6XX	052-08140-15	COIL A/W 1.5T/4.0MM HOR 0.8MM WIRE
D401		001-10000-70	(S) DIODE SMD BAV70 DUAL SWITCH SOT-23 CO	*L326	6XXL	052-08140-15	COIL A/W 1.5T/4.0MM HOR 0.8MM WIRE
IC101		002-10033-71	(S) IC SMD MC3371D-R2 FM IF DETECT RSSI	L331		057-10005-03	IND 0805 BLM21B05 EMI SUPRSN 5 OHM AT 100M
IC201		002-10451-58	(S) IC SMD MC145158DW2 FREQ SYNTH SOIC	L401		050-00016-50	COIL TAIT NO 650 455KHZ 5.6MM CAN
IC202		002-10330-78	(S) IC MC33078D-R2 DUAL AMP LO NOISE SO-8	P1		240-00026-24	CONN PADLE BRD 16 WAY MICRO MATCH 1-2155
IC203		002-10120-22	(S) IC SMD MC12022AD-R2 PRESC 8-P	P2		240-00026-26	CONN PADLE BRD 12 WAY MICRO MATCH 1-2155
IC402		002-00013-70	(S) IC TDA1020 AF PWR AMP 9PIN SIL	P3		240-00026-21	PLUG CAP HOUSING 7-POS CONN 172039-1
IC403		002-00078-08	(S) IC MC7808ACT 8V REG(LINEAR)1AMP TO-220	P5		240-00010-76	PLUG HEADER 10WAY MICROMATCH PCB MTD 1-
IC404		002-00078-05	(S) IC MC7805ACT 5V REG(LINEAR)1AMP TO-220	P6		240-00010-76	PLUG HEADER 10WAY MICROMATCH PCB MTD 1-
IC405		002-00014-62	(S) IC 317L 100MA REG 3 TERMINAL TO-92	P7		240-00020-72	HEADER 2 WAY PCB MTG ULTREX
L1		030-50000-00	LINK WIRE AI ZERO OHM 0.6MM WIRE	Q100		000-10003-12	(S) XSTR SMD BFR31 N JFET SOT-23
L104		050-00016-64	COIL RF 12NH NOM 1.5T BRASS CORE SHLDED N	Q101		000-10095-10	(S) XSTR SMD MMBR951 NPN UHF SOT-23
L105		050-00016-64	COIL RF 12NH NOM 1.5T BRASS CORE SHLDED N	Q102		000-10008-57	(S) XSTR SMD BCW70 PNP SOT23 AF SML SIG
L106		050-00016-64	COIL RF 12NH NOM 1.5T BRASS CORE SHLDED N	Q103		000-10095-10	(S) XSTR SMD MMBR951 NPN UHF SOT-23
L107		050-00016-65	COIL BALUN 7.2MM2 5X0.5PINS 5T/4 456DB-1007	Q105		000-10095-10	(S) XSTR SMD MMBR951 NPN UHF SOT-23
L108		050-00016-65	COIL BALUN 7.2MM2 5X0.5PINS 5T/4 456DB-1007	Q106		000-10008-48	(S) XSTR SMD BCW60/BC848B215 NPN SOT23 AF
L109		052-08130-15	COIL A/W 1.5T/3.0MM HOR 0.8MM WIRE	Q107		000-10008-92	(S) XSTR SMD BFR31 NPN SOT-23 UHF SMALL SI
L110		056-00021-60	IND FXD 330NH 6.6X2.7MM AXIAL NON MAGNETI	#Q108		000-10008-92	(S) XSTR SMD BFR31 NPN SOT-23 UHF SMALL SI
L114		050-00016-62	COIL IF 1UH AT 30MHZ 6MMSQX6.2MMH CAN 294	Q109		000-10008-24	(S) XSTR SMD BF824 PNP SOT-23 RF SMALL SIG
L116		050-00016-62	COIL IF 1UH AT 30MHZ 6MMSQX6.2MMH CAN 294	Q110		000-10008-92	(S) XSTR SMD BFR31 NPN SOT-23 UHF SMALL SI
L117		050-00016-65	COIL BALUN 7.2MM2 5X0.5PINS 5T/4 456DB-1007	Q115		000-10008-48	(S) XSTR SMD BCW60/BC848B215 NPN SOT23 AF
L118		050-00016-65	COIL BALUN 7.2MM2 5X0.5PINS 5T/4 456DB-1007	Q200		000-10008-48	(S) XSTR SMD BCW60/BC848B215 NPN SOT23 AF
L119		050-00016-55	COIL TAIT NO 655 455KHZ QUAD COIL 7MM CAN	Q201		000-10008-57	(S) XSTR SMD BCW70 PNP SOT23 AF SML SIG
L120		057-10005-03	IND 0805 BLM21B05 EMI SUPRSN 5 OHM AT 100M	Q202		000-10008-48	(S) XSTR SMD BCW60/BC848B215 NPN SOT23 AF
L121		057-10120-03	IND 0805 BLM21A121 EMI SUPRSN 120 OHM @ 10	Q203		000-10008-48	(S) XSTR SMD BCW60/BC848B215 NPN SOT23 AF
L200		057-10005-03	IND 0805 BLM21B05 EMI SUPRSN 5 OHM AT 100M	Q204		000-10008-48	(S) XSTR SMD BCW60/BC848B215 NPN SOT23 AF
L201		056-10100-00	IND FXD SMD 100NH 3.2*2.5*1.6 SIEMENS SMIDO	Q205		000-10008-57	(S) XSTR SMD BCW70 PNP SOT23 AF SML SIG
L202		056-10100-00	IND FXD SMD 100NH 3.2*2.5*1.6 SIEMENS SMIDO	Q206		000-10008-48	(S) XSTR SMD BCW60/BC848B215 NPN SOT23 AF
L203		050-00016-62	COIL IF 1UH AT 30MHZ 6MMSQX6.2MMH CAN 294	Q207		000-10008-57	(S) XSTR SMD BCW70 PNP SOT23 AF SML SIG
L204		057-00100-02	IND FXD SMD 100NH 10% MLF3216DR 1206 CHIP	Q208		000-10008-48	(S) XSTR SMD BCW60/BC848B215 NPN SOT23 AF
L205		056-10330-00	IND FXD SMD 330NH 3.2*2.5*1.6 SIEMENS SMIDO	Q209		000-10008-57	(S) XSTR SMD BCW70 PNP SOT23 AF SML SIG
L206		056-10330-00	IND FXD SMD 330NH 3.2*2.5*1.6 SIEMENS SMIDO	Q210		000-10003-12	(S) XSTR SMD BFR31 N JFET SOT-23
*L207	5XX	051-00571-00	IND TRANSMISSION LINE T2500 87MM RG405	Q211		000-10008-07	(S) XSTR SMD BC807 PNP SOT-23 AF LO PWR
*L207	5XXL	051-00571-00	IND TRANSMISSION LINE T2500 87MM RG405	Q212		000-10095-10	(S) XSTR SMD MMBR951 NPN UHF SOT-23
*L207	6XX	051-00570-00	IND TRANSMISSION LINE T2000 80MM RG405	Q213		000-10008-48	(S) XSTR SMD BCW60/BC848B215 NPN SOT23 AF
*L207	6XXL	051-00570-00	IND TRANSMISSION LINE T2000 80MM RG405	Q214		000-10057-10	(S) XSTR SMD MMBR571 NPN SOT-23 UHF LO PW
L208		056-10330-00	IND FXD SMD 330NH 3.2*2.5*1.6 SIEMENS SMIDO	Q215		000-10057-10	(S) XSTR SMD MMBR571 NPN SOT-23 UHF LO PW
L209		056-10330-00	IND FXD SMD 330NH 3.2*2.5*1.6 SIEMENS SMIDO	Q216		000-10008-48	(S) XSTR SMD BCW60/BC848B215 NPN SOT23 AF
L210		057-00015-00	IND FXD 15NH +-5% 1206 CHIP MUR LQN1A15NJ0	Q217		000-10008-48	(S) XSTR SMD BCW60/BC848B215 NPN SOT23 AF
*L300	5XX	052-08335-10	COIL A/W 1T/3.5MM SMD 0.8MM WIRE	Q300		000-00032-56	(S) XSTR MRF630 NPN TO-39 UHF PWR 3W

Ref	Var	IPN	Description	Ref	Var	IPN	Description
Q301		000-10095-10	(S) XSTR SMD MMBR951 NPN UHF SOT-23	R223		036-15220-00	RES M/F 0805 CHIP 22K 5%
Q302		000-00032-47	(S) XSTR MRF559 NPN XPACK UHF PWR 0.5W	R224		036-15120-00	RES M/F 0805 CHIP 12K 5%
Q303		000-10008-48	(S) XSTR SMD BCW60/BC848B215 NPN SOT23 AF	R225		036-15220-00	RES M/F 0805 CHIP 22K 5%
Q304		000-00012-15	(S) XSTR BD234 PNP AF PWR TO126	R226		036-14560-00	RES M/F 0805 CHIP 5K6 5%
Q305		000-00022-75	(S) XSTR SD1433 NPN STUD MTG UHF PWR 10W	R227		036-13220-00	RES M/F 0805 CHIP 220E 5%
*Q306	5XX	000-00032-65	(S) XSTR MRF646 NPN 6FL UHF PWR 45W	R228		036-14330-00	RES M/F 0805 CHIP 3K3 5%
*Q306	6XX	000-00032-65	(S) XSTR MRF646 NPN 6FL UHF PWR 45W	R229		036-12220-00	RES M/F 0805 CHIP 22E 5%
Q307		000-10008-48	(S) XSTR SMD BCW60/BC848B215 NPN SOT23 AF	R230		036-13470-00	RES M/F 0805 CHIP 470E 5%
Q308		000-10008-07	(S) XSTR SMD BC807 PNP SOT-23 AF LO PWR	R231		036-13220-00	RES M/F 0805 CHIP 220E 5%
Q309		000-10095-10	(S) XSTR SMD MMBR951 NPN UHF SOT-23	R232		036-14220-00	RES M/F 0805 CHIP 2K2 5%
Q310		000-10008-48	(S) XSTR SMD BCW60/BC848B215 NPN SOT23 AF	R233		036-17100-00	RES M/F 0805 CHIP 1M 5%
Q311		000-10008-07	(S) XSTR SMD BC807 PNP SOT-23 AF LO PWR	R234		036-12680-00	RES M/F 0805 CHIP 68E 5%
Q401		000-10008-57	(S) XSTR SMD BCW70 PNP SOT23 AF SML SIG	R235		036-13330-00	RES M/F 0805 CHIP 330E 5%
Q402		000-10008-17	(S) XSTR SMD BC817-25 NPN SOT-23 AF LO PWR	R236		036-12470-00	RES M/F 0805 CHIP 47E 5%
				R237		036-13100-00	RES M/F 0805 CHIP 100E 5%
R100		036-13470-00	RES M/F 0805 CHIP 470E 5%	R238		036-14820-00	RES M/F 0805 CHIP 8K2 5%
R101		036-14390-00	RES M/F 0805 CHIP 3K9 5%	R239		036-15220-00	RES M/F 0805 CHIP 22K 5%
R102		036-13560-00	RES M/F 0805 CHIP 560E 5%	R240		036-16100-00	RES M/F 0805 CHIP 100K 5%
R103		036-14220-00	RES M/F 0805 CHIP 2K2 5%	R241		036-14180-00	RES M/F 0805 CHIP 1K8 5%
R104		036-13120-00	RES M/F 0805 CHIP 120E 5%	R242		036-12220-00	RES M/F 0805 CHIP 22E 5%
R105		036-12180-00	RES M/F 0805 CHIP 18E 5%	R243		036-14330-00	RES M/F 0805 CHIP 3K3 5%
R106		036-16100-00	RES M/F 0805 CHIP 100K 5%	R244		036-12220-00	RES M/F 0805 CHIP 22E 5%
R107		036-16100-00	RES M/F 0805 CHIP 100K 5%	R245		036-12220-00	RES M/F 0805 CHIP 22E 5%
R108		036-16100-00	RES M/F 0805 CHIP 100K 5%	R246		036-13390-00	RES M/F 0805 CHIP 390E 5%
R112		036-12470-00	RES M/F 0805 CHIP 47E 5%	R247		036-12100-00	RES M/F 0805 CHIP 10E 5%
R113		036-11470-00	RES M/F 0805 CHIP 4E7 10%	R248		036-10000-00	RES M/F 0805 CHIP ZERO OHM
R114		036-13820-00	RES M/F 0805 CHIP 820E 5%	R250		036-12220-00	RES M/F 0805 CHIP 22E 5%
R115		036-15120-00	RES M/F 0805 CHIP 12K 5%	R251		036-13150-00	RES M/F 0805 CHIP 150E 5%
R116		036-11470-00	RES M/F 0805 CHIP 4E7 10%	R252		036-13820-00	RES M/F 0805 CHIP 820E 5%
R117		036-12100-00	RES M/F 0805 CHIP 10E 5%	R253		036-12330-00	RES M/F 0805 CHIP 33E 5%
R118		036-13100-00	RES M/F 0805 CHIP 100E 5%	R254		036-12330-00	RES M/F 0805 CHIP 33E 5%
R119		036-12100-00	RES M/F 0805 CHIP 10E 5%	R255		036-12220-00	RES M/F 0805 CHIP 22E 5%
R120		036-13820-00	RES M/F 0805 CHIP 820E 5%	R256		036-14150-00	RES M/F 0805 CHIP 1K5 5%
R121		036-13180-00	RES M/F 0805 CHIP 180E 5%	R257		036-14120-00	RES M/F 0805 CHIP 1K2 5%
R122		036-15100-00	RES M/F 0805 CHIP 10K 5%	R258		036-12100-00	RES M/F 0805 CHIP 10E 5%
R123		036-15100-00	RES M/F 0805 CHIP 10K 5%	R259		036-13820-00	RES M/F 0805 CHIP 820E 5%
R131		036-13100-00	RES M/F 0805 CHIP 100E 5%	R260		036-12180-00	RES M/F 0805 CHIP 18E 5%
R132		036-14220-00	RES M/F 0805 CHIP 2K2 5%	R261		036-12330-00	RES M/F 0805 CHIP 33E 5%
R133		036-13270-00	RES M/F 0805 CHIP 270E 5%	R262		036-15220-00	RES M/F 0805 CHIP 22K 5%
R135		036-15100-00	RES M/F 0805 CHIP 10K 5%	R263		036-15470-00	RES M/F 0805 CHIP 47K 5%
R138		036-16100-00	RES M/F 0805 CHIP 100K 5%	R264		036-15220-00	RES M/F 0805 CHIP 22K 5%
#R140		036-15680-00	RES M/F 0805 CHIP 68K 5%	R265		036-16100-00	RES M/F 0805 CHIP 100K 5%
#R140A		036-15330-00	RES M/F 0805 CHIP 33K 5%	R266		036-14330-00	RES M/F 0805 CHIP 3K3 5%
R141		036-14150-00	RES M/F 0805 CHIP 1K5 5%	R267		036-14330-00	RES M/F 0805 CHIP 3K3 5%
#R142		036-15270-00	RES M/F 0805 CHIP 27K 5%	R268		036-12560-00	RES M/F 0805 CHIP 56E 5%
#R142A		036-16100-00	RES M/F 0805 CHIP 100K 5%	R269		036-11470-00	RES M/F 0805 CHIP 4E7 10%
R143		036-15330-00	RES M/F 0805 CHIP 33K 5%	R270		036-12470-00	RES M/F 0805 CHIP 47E 5%
#R143A		036-15330-00	RES M/F 0805 CHIP 33K 5%	R271		036-12100-00	RES M/F 0805 CHIP 10E 5%
#R144		036-15680-00	RES M/F 0805 CHIP 68K 5%	R272		036-13220-00	RES M/F 0805 CHIP 220E 5%
#R144A		036-16120-00	RES M/F 0805 CHIP 120K 5%	R273		036-11470-00	RES M/F 0805 CHIP 4E7 10%
R145		036-14150-00	RES M/F 0805 CHIP 1K5 5%	R274		036-14390-00	RES M/F 0805 CHIP 3K9 5%
#R145A		036-15330-00	RES M/F 0805 CHIP 33K 5%	R275		036-12470-00	RES M/F 0805 CHIP 47E 5%
R146		036-12220-00	RES M/F 0805 CHIP 22E 5%	R276		036-14220-00	RES M/F 0805 CHIP 2K2 5%
R147		036-13220-00	RES M/F 0805 CHIP 220E 5%	R277		036-12330-00	RES M/F 0805 CHIP 33E 5%
R148		036-13560-00	RES M/F 0805 CHIP 560E 5%	R278		036-16100-00	RES M/F 0805 CHIP 100K 5%
R150		036-16100-00	RES M/F 0805 CHIP 100K 5%	R279		036-16180-00	RES M/F 0805 CHIP 180K 5%
R151		036-14330-00	RES M/F 0805 CHIP 3K3 5%	R280		036-16180-00	RES M/F 0805 CHIP 180K 5%
R152		036-16390-00	RES M/F 0805 CHIP 390K 5%	R282		036-13120-00	RES M/F 0805 CHIP 120E 5%
R153		036-14100-00	RES M/F 0805 CHIP 1K 5%	R284		036-15100-00	RES M/F 0805 CHIP 10K 5%
RV153		042-05470-07	RES PRESET 47K CARBON 6MM FLAT DUAL ADJ	R285		036-15100-00	RES M/F 0805 CHIP 10K 5%
R155		036-16100-00	RES M/F 0805 CHIP 100K 5%	R286		036-14100-00	RES M/F 0805 CHIP 1K 5%
R156		036-13100-00	RES M/F 0805 CHIP 100E 5%	R287		036-16100-00	RES M/F 0805 CHIP 100K 5%
R157		036-15100-00	RES M/F 0805 CHIP 10K 5%	R288		036-10000-00	RES M/F 0805 CHIP ZERO OHM
R158		036-14100-00	RES M/F 0805 CHIP 1K 5%	R290		036-14100-00	RES M/F 0805 CHIP 1K 5%
R159		036-12470-00	RES M/F 0805 CHIP 47E 5%	R300		036-13220-00	RES M/F 0805 CHIP 220E 5%
R160		036-12100-00	RES M/F 0805 CHIP 10E 5%	R301		036-13220-00	RES M/F 0805 CHIP 220E 5%
R161		036-14100-00	RES M/F 0805 CHIP 1K 5%	R302		036-14100-00	RES M/F 0805 CHIP 1K 5%
R194		036-10000-00	RES M/F 0805 CHIP ZERO OHM	R303		030-52680-20	RES FILM AI 68E 5% 0.4W 4X1.6MM
R195		036-15680-00	RES M/F 0805 CHIP 68K 5%	*R304	5XX	036-13100-00	RES M/F 0805 CHIP 100E 5%
R196		036-13100-00	RES M/F 0805 CHIP 100E 5%	*R304	5XXL	036-13100-00	RES M/F 0805 CHIP 100E 5%
R197		036-13100-00	RES M/F 0805 CHIP 100E 5%	*R304	6XX	036-13100-00	RES M/F 0805 CHIP 100E 5%
R198		036-14220-00	RES M/F 0805 CHIP 2K2 5%	*R304	6XXL	036-13100-00	RES M/F 0805 CHIP 100E 5%
R199		036-13100-00	RES M/F 0805 CHIP 100E 5%	R305		036-12100-00	RES M/F 0805 CHIP 10E 5%
R200		036-10000-00	RES M/F 0805 CHIP ZERO OHM	*R305A	5XX	032-32330-00	RES M/F PWR 220E 5% 1W 12X4.5MM
R209		036-14220-00	RES M/F 0805 CHIP 2K2 5%	R306		036-14120-00	RES M/F 0805 CHIP 1K2 5%
R210		036-16180-00	RES M/F 0805 CHIP 180K 5%	*R307	5XX	032-33220-02	RES M/F PWR 220E 5% 1W 8X2.5MM 12MML/S
R212		036-14220-00	RES M/F 0805 CHIP 2K2 5%	*R307	5XXL	032-33220-02	RES M/F PWR 220E 5% 1W 8X2.5MM 12MML/S
R213		036-14120-00	RES M/F 0805 CHIP 1K2 5%	*R307	6XX	032-33220-02	RES M/F PWR 220E 5% 1W 8X2.5MM 12MML/S
R214		036-14120-00	RES M/F 0805 CHIP 1K2 5%	*R307	6XXL	032-33220-02	RES M/F PWR 220E 5% 1W 8X2.5MM 12MML/S
R217		036-12470-00	RES M/F 0805 CHIP 47E 5%	R308		030-54120-20	RES FILM AI 1K2 5% 0.4W 4X1.6MM
R218		036-15120-00	RES M/F 0805 CHIP 12K 5%	*R309	5XX	036-12470-00	RES M/F 0805 CHIP 47E 5%
R219		036-13330-00	RES M/F 0805 CHIP 330E 5%	*R309	5XXL	036-12470-00	RES M/F 0805 CHIP 47E 5%
R220		036-14680-00	RES M/F 0805 CHIP 6K8 5%	*R309	6XX	036-12680-00	RES M/F 0805 CHIP 68E 5%
R221		036-13330-00	RES M/F 0805 CHIP 330E 5%	*R309	6XXL	036-12680-00	RES M/F 0805 CHIP 68E 5%
R222		036-12470-00	RES M/F 0805 CHIP 47E 5%	R310		030-53220-20	RES FILM AI 220E 5% 0.4W 4X1.6MM
RV222		042-05470-07	RES PRESET 47K CARBON 6MM FLAT DUAL ADJ	R311		036-13180-00	RES M/F 0805 CHIP 180E 5%

Ref	Var	IPN	Description	Ref	Var	IPN	Description
R312		036-13680-00	RES M/F 0805 CHIP 680E 5%				
*R313	5XX	032-03330-00	RES M/F 330E 1% 7X2.5MM				
*R313	6XX	032-03330-00	RES M/F 330E 1% 7X2.5MM				
*R314	5XXL	030-52560-20	RES FILM AI 56E 5% 0.4W 4X1.6MM				
*R314	6XXL	030-52560-20	RES FILM AI 56E 5% 0.4W 4X1.6MM				
*R315	5XX	030-52220-20	RES FILM AI 22E 5% 0.4W 4X1.6MM				
*R315	5XXL	030-52220-20	RES FILM AI 22E 5% 0.4W 4X1.6MM				
R316		036-13150-00	RES M/F 0805 CHIP 150E 5%				
R317		036-13100-00	RES M/F 0805 CHIP 100E 5%				
*R318	5XXL	030-52560-20	RES FILM AI 56E 5% 0.4W 4X1.6MM				
*R318	6XXL	030-52560-20	RES FILM AI 56E 5% 0.4W 4X1.6MM				
*R319	5XX	032-32220-00	RES M/F PWR 22E 5% 1W 12X4.5MM				
R320		030-55270-20	RES FILM AI 27K 5% 0.4W 4X1.6MM				
R321		036-16470-00	RES M/F 0805 CHIP 470K 5%				
R322		030-02100-00	RES FILM 10E 5% 0.25W 7X2.5MM				
R323		030-52330-20	RES FILM AI 33E 5% 0.4W 4X1.6MM				
*R323	5XXL	030-52680-20	RES FILM AI 68E 5% 0.4W 4X1.6MM				
R324		030-02180-00	RES FILM 18E 5% 0.25W 7X2.5				
RV324		042-06470-06	RES PRESET 470/500K 25% 6MM ROUND TOP AD				
R325		030-55270-20	RES FILM AI 27K 5% 0.4W 4X1.6MM				
R326		036-16220-00	RES M/F 0805 CHIP 220K 5%				
R327		036-14100-00	RES M/F 0805 CHIP 1K 5%				
R328		030-53150-20	RES FILM AI 150E 5% 0.4W 4X1.6MM				
R329		036-15470-00	RES M/F 0805 CHIP 47K 5%				
R330		036-16220-00	RES M/F 0805 CHIP 220K 5%				
R332		036-13100-00	RES M/F 0805 CHIP 100E 5%				
R333		036-14220-00	RES M/F 0805 CHIP 2K2 5%				
*R334	5XX	036-12220-00	RES M/F 0805 CHIP 22E 5%				
*R334	5XXL	036-12220-00	RES M/F 0805 CHIP 22E 5%				
R337		036-10000-00	RES M/F 0805 CHIP ZERO OHM				
R338		036-15330-00	RES M/F 0805 CHIP 33K 5%				
R339		036-15100-00	RES M/F 0805 CHIP 10K 5%				
R340		036-15100-00	RES M/F 0805 CHIP 10K 5%				
R341		036-15470-00	RES M/F 0805 CHIP 47K 5%				
R342		036-16150-00	RES M/F 0805 CHIP 150K 5%				
R343		036-14470-00	RES M/F 0805 CHIP 4K7 5%				
R344		036-14220-00	RES M/F 0805 CHIP 2K2 5%				
R345		036-14100-00	RES M/F 0805 CHIP 1K 5%				
R346		036-13680-00	RES M/F 0805 CHIP 680E 5%				
R347		036-15100-00	RES M/F 0805 CHIP 10K 5%				
R348		036-14100-00	RES M/F 0805 CHIP 1K 5%				
R418		036-13680-00	RES M/F 0805 CHIP 680E 5%				
R420		036-15390-00	RES M/F 0805 CHIP 39K 5%				
R421		036-15390-00	RES M/F 0805 CHIP 39K 5%				
R422		036-12220-00	RES M/F 0805 CHIP 22E 5%				
R425		036-14100-00	RES M/F 0805 CHIP 1K 5%				
R426		036-11470-00	RES M/F 0805 CHIP 4E7 10%				
R427		036-11470-00	RES M/F 0805 CHIP 4E7 10%				
R428		036-12220-00	RES M/F 0805 CHIP 22E 5%				
R429		036-15270-00	RES M/F 0805 CHIP 27K 5%				
R430		036-14680-00	RES M/F 0805 CHIP 6K8 5%				
R431		036-16100-00	RES M/F 0805 CHIP 100K 5%				
R432		036-12100-00	RES M/F 0805 CHIP 10E 5%				
R433		036-13100-00	RES M/F 0805 CHIP 100E 5%				
R434		036-12220-00	RES M/F 0805 CHIP 22E 5%				
R435		036-15180-00	RES M/F 0805 CHIP 18K 5%				
R436		036-14120-00	RES M/F 0805 CHIP 1K2 5%				
R437		036-14100-00	RES M/F 0805 CHIP 1K 5%				

Variants: 5XX 400-470MHz
6XX 450-520MHz
5XXL 410-430MHz low power
6XXL 450-520MHz low power

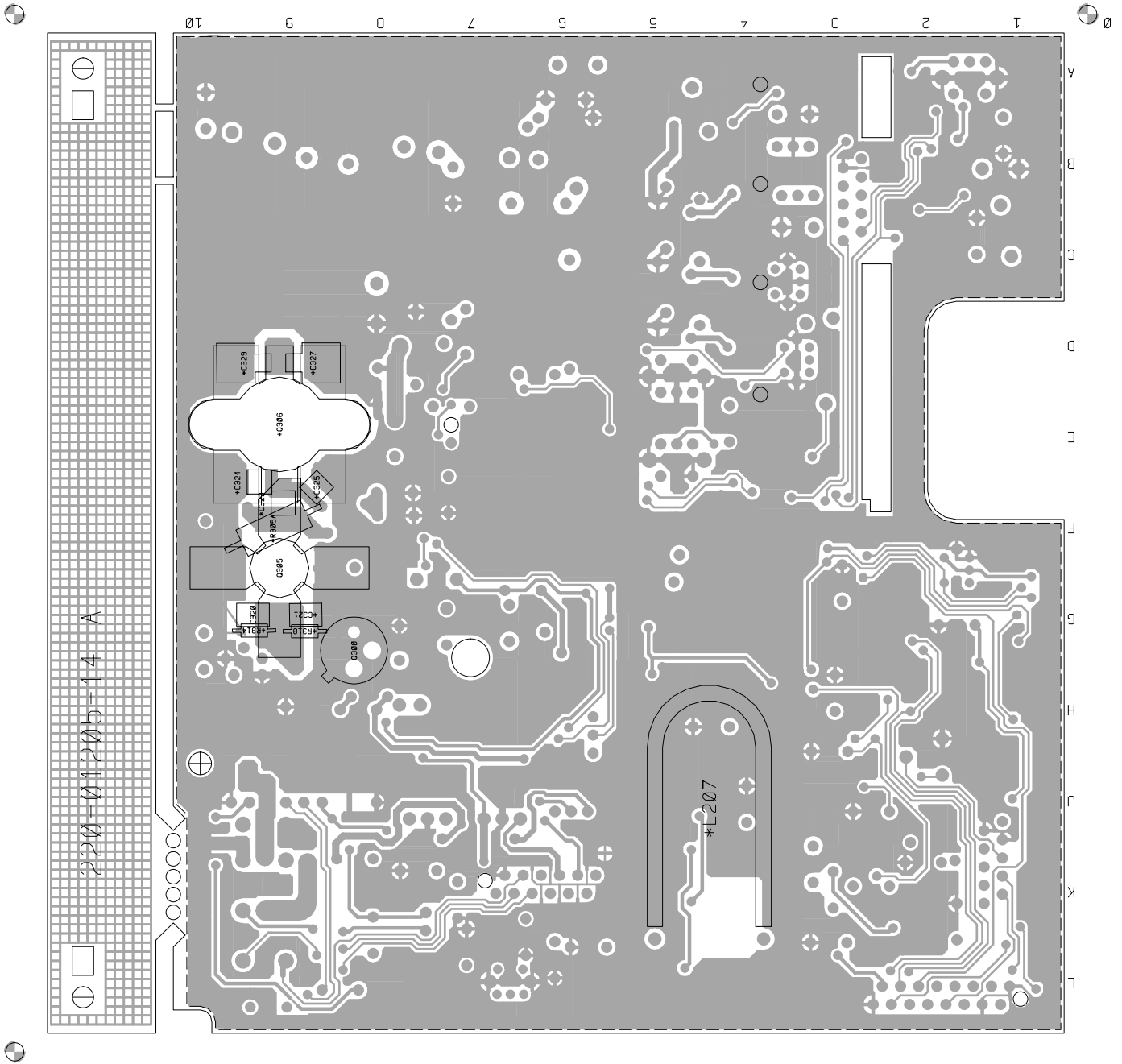
T2000-500/-600 Mechanical & Miscellaneous Parts

IPN	Description	IPN	Description
062-00010-14	CAN 7.5MM SQ X 10.2MM TOKO MC-136 CANS TO BE PLACED OVER L107 L108		
065-00010-11	BEAD FERRITE 4S3 3*1*4MM RED L1, L307, L309, *L314, *L316, L304, L304A		
205-00010-12	CABLE FLAT RBBN 16 CORE 16/7/0.1 GREY		
220-01205-14	PCB T2500 RF 400-520MHZ C735		
240-00020-51	PLUG 12 WAY 2*6 FLAT CABLE TERMN		
240-00020-54	PLUG 16 WAY 2X8 FLAT CABLE TERMN MICROMATCH		
240-02100-11	SKT COAX BNC 3.5MM PNL NO EARTH TAG		
303-23135-01	COVER BTM A1M2505 T2000 PNTD CMLPT		
303-50077-00	CLIP A3M2525 T2000 AUDIO IC AND REG		
308-13103-01	CHASSIS A1M2503 D-CAST T2000 PNTD CMLPT		
316-85094-00	PLATE A4M2160 BNC MTG UK 5X5 SERIES		
319-01164-01	SHIELD A1M2507 DIE CAST T2000 MICROP		
319-01167-00	SHIELD RX A3M2594 T2000		
349-00020-30	SCREW TAPTITE M3X6MM PAN POZI BZ PCB tO CHASSIS		
349-00020-31	SCREW TAPTITE M3X10MM PAN POZI BZ		
349-00020-32	SCREW TAPTITE M3X8MM PAN POZI BZ Q306 =2 BNC PLATE =2 CHASSIS =2		
349-00020-34	SCREW M3*12 PAN POZI TAPTITE BZ MICRO SHEILD TO CHASSIS		
349-00020-48	SCREW M4X25MM PAN POZI TAPTITE II BRIGHT ZINC		
349-00020-49	SCREW TAPTITE M4X35MM PAN POZI BZ TOP COVER		
352-00010-35	NUT 8-32 UNC HEX RF PWR XSTR MTG NUT FOR Q305		
356-00010-05	TAG SOLDER 4MM LONG M6144/4.2 PLACED ON Q305 STUD AND SOLDERED TO GND		
360-01053-01	PLUG A3M2563 PLASTIC D-RANGE BLANKING		
362-01027-01	GASKET A4M2564 RUBBER SEAL T2000 MAIN CONN		
362-01028-00	GASKET A4M2652 130X3MM CONDUCT STRIPS T2000		
362-01058-00	GASKET TO-126 11.1X7.9 D2.4 SIL INSULATION		
T2000-500/600 LOW POWER VARIANT PARTS			
220-01287-00	PCB T2000 UHF FINAL TRANSTR REPLACEMENT		

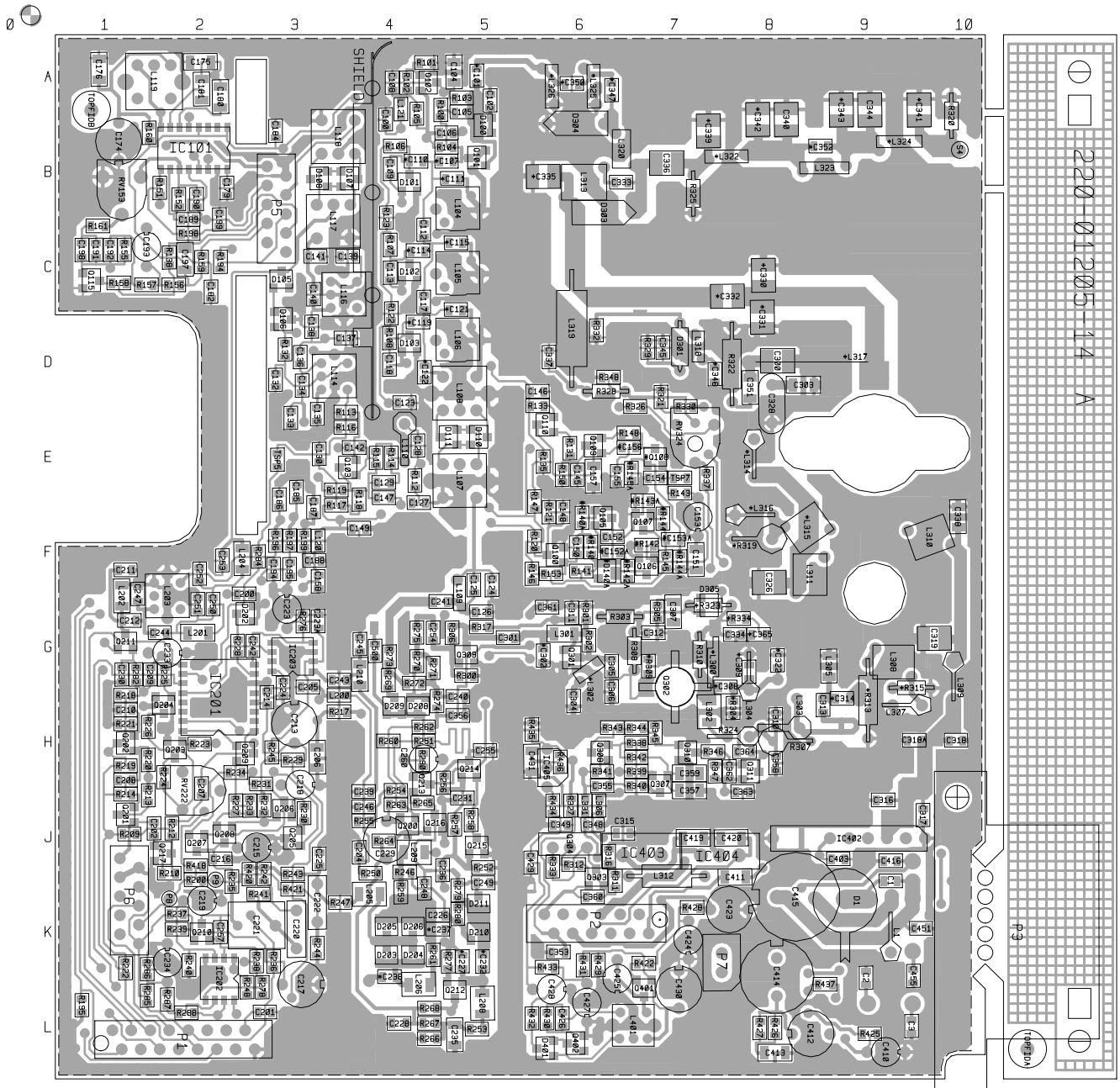
T2000-500/-600 Grid Reference Index (IPN 220-01205-14)

Device	PCB	Circuit	Device	PCB	Circuit	Device	PCB	Circuit	Device	PCB	Circuit
C1	1:J9	1-V9	C192	1:C1	1-M7	*C308	1:G8	1-K0	C428	1:L6	1-Q8
C2	1:K9	1-U8	C193	1:C1	1-N7	*C309	1:G8	1-K0	C429	1:J6	1-P8
C3	1:L10	1-V8	C194	1:F3	1-A7	C310	1:H8	1-M1	C430	1:L7	1-M9
C100	1:A4	1-U3	C195	1:F3	1-A8	C311	1:G6	1-H1	C431	1:H6	1-R8
*C101	1:A5	1-T3	C197	1:C2	1-O7	C312	1:G7	1-K1	C451	1:K10	1-V8
C102	1:A5	1-S2	C198	1:C1	1-M6	C313	1:H9	1-M0	C455	1:K10	1-V8
C104	1:A5	1-S3	C199	1:B2	1-M7	*C314	1:G9	1-M0	C500	1:G4	1-F1
C105	1:A5	1-S3	C200	1:F3	1-B5	C315	1:J6	1-M1			
C106	1:B5	1-R3	C201	1:L3	1-A4	C316	1:J9	1-P1	D1	1:K9	1-V9
*C107	1:B5	1-R3	C202	1:J2	1-C7	C317	1:J10	1-P1	D100	1:A5	1-S2
C108	1:A4	1-T3	C204	1:J4	1-D2	C318	1:H10	1-O1			1-S2
C109	1:B4	1-Q3	C205	1:G3	1-C2	C318A	1:H10	1-O1	D101	1:B4	1-Q3
*C110	1:B4	1-Q3	C206	1:H3	1-H5	C319	1:G10	1-O1	D102	1:C4	1-P3
*C111	1:B5	1-P3	C207	1:H2	1-B6	C320	2:G9	1-N0	D103	1:D4	1-N3
C112	1:C4	1-P3	C208	1:H1	1-C7	*C321	2:G9	1-N0	D105	1:C3	1-T6
C113	1:C4	1-P3	C209	1:G2	1-C8	*C322	1:G8	1-L0	D106	1:D3	1-U6
*C114	1:C4	1-P3	C210	1:H1	1-E7	*C323	2:F9	2-D7	D107	1:B4	1-S6
*C115	1:C5	1-O3	C211	1:F1	1-E7	*C324	2:E9	2-E7			1-S5
C117	1:C4	1-O3	C212	1:G1	1-F7	*C325	2:F9	2-F7	D108	1:B3	1-S5
C118	1:D4	1-O3	C213	1:H3	1-D4	C326	1:F8	1-P1			1-S5
*C119	1:D4	1-N3	C214	1:G3	1-C4	*C327	2:D9	2-F7	D110	1:E5	1-K3
*C121	1:C5	1-N2	C215	1:J3	1-E4	C328	1:D8	1-R1			1-K3
*C122	1:D4	1-M3	C216	1:J2	1-E5	*C329	2:D9	2-F7	D111	1:E5	1-K3
C123	1:D4	1-J3	C217	1:L3	1-F4	*C330	1:C8	2-G7			1-K2
C124	1:F5	1-I2	C218	1:H3	1-F5	*C331	1:C8	1-R0	#D140A	1:F6	1-P4
C125	1:F5	1-H3	C219	1:K2	1-G4	*C332	1:C8	1-R0	D202	1:G3	1-C5
C126	1:G5	1-H2	C220	1:K3	1-G5	C333	1:B6	1-T0	D203	1:K4	1-A0
C127	1:E4	1-K5	C221	1:K2	1-G5	C334	1:G8	1-J1	D204	1:K4	1-A0
C128	1:E4	1-K5	C222	1:J3	1-H3	*C335	1:B6	1-S0	D205	1:K4	1-A0
C129	1:E4	1-M5	C223	1:G3	1-F3	C336	1:B7	1-T0	D206	1:K4	1-A0
C130	1:E3	1-M5	C223A	1:G3	1-E3	C337	1:D6	1-T1	D208	1:H4	1-F0
C132	1:D3	1-U6	C224	1:G3	1-E2	C338	1:F10	1-O1	D209	1:H4	1-F1
C133	1:E3	1-O5	C225	1:J3	1-A1	*C339	1:B7	1-U0	D210	1:K5	1-C0
C134	1:D3	1-O6	C226	1:K5	1-C0	C340	1:A8	1-U0	D211	1:K5	1-B1
C135	1:E3	1-P5	*C227	1:K5	1-C0	*C341	1:A10	1-V0	D301	1:D7	1-R1
C136	1:D3	1-P6	C228	1:L4	1-D1	*C342	1:A8	1-U0	D303	1:B6	1-S0
C137	1:D4	1-P5	C229	1:J4	1-D1	*C343	1:A9	1-V0	D304	1:A6	1-T0
C138	1:D3	1-P6	C230	1:G1	1-E7	C344	1:A9	1-V0	D305	1:G7	1-L2
C139	1:C4	1-Q5	C231	1:J5	1-E1	C345	1:D7	1-R1			1-L2
C140	1:C3	1-Q6	*C232	1:K5	1-C0	*C346	1:D7	1-R0	D401	1:L6	1-P9
C141	1:C3	1-Q5	C233	1:G2	1-F8	*C347	1:A6	1-T1			1-P9
C142	1:E4	1-L5	C234	1:K2	1-J3	C348	1:J6	1-U2			
C145	1:E6	1-T4	C235	1:L5	1-C1	C349	1:J6	1-V2	IC101	1:B2	1-K6
C146	1:D6	1-U4	C236	1:J5	1-E0	*C350	1:A6	1-T1			1-L7
C147	1:E4	1-N5	*C237	1:K5	1-C0	C351	1:D8	1-P1			1-O7
C148	1:F6	1-O4	*C238	1:K4	1-B0	*C352	1:B9	1-U0	IC201	1:G2	1-B4
C149	1:F4	1-L4	C239	1:H4	1-F2	C353	1:K6	1-V2	IC202	1:K2	
C150	1:F6	1-O4	C240	1:G5	1-G1	C355	1:H6	1-I2			1-G4
C151	1:F7	1-Q5	C241	1:F5	1-G3	C356	1:H5	1-G1			1-J4
C152	1:F6	1-Q4	C242	1:G3	1-B3	C357	1:H7	1-H1	IC203	1:G3	1-E2
#C152A	1:F6	1-P4	C243	1:G4	1-E3	C358	1:H8	1-M1	IC402	1:J9	1-S8
C153	1:F7	1-Q4	C244	1:G2	1-G7	C359	1:H7	1-H1	IC403	1:J7	1-K9
#C153A	1:F7	1-R4	C245	1:G4	1-F2	C360	1:K6	1-K1	IC404	1:J8	1-K8
C154	1:E7	1-S4	C246	1:J4	1-E2	C361	1:G6	1-G2	IC405	1:H6	1-Q8
C155	1:E6	1-S4	C247	1:F1	1-F7	C362	1:H8	1-J2			
#C156	1:E7	1-S4	C248	1:J4	1-B1	C363	1:H8	1-I1	L1	1:K9	1-U9
C157	1:E6	1-T5	C249	1:J5	1-B1	C364	1:H8	1-K2	L104	1:B5	1-Q2
C158	1:F3	1-K4	C250	1:G2	1-G7	*C365	1:G8	1-J0	L105	1:C5	1-P2
C174	1:B1	1-J8	C251	1:G2	1-G7	C403	1:J9	1-S8	L106	1:D5	1-N2
C175	1:A2	1-K8	C252	1:F2	1-H7	C410	1:L9	1-S9	L107	1:E5	1-J3
C176	1:A1	1-K8	C253	1:F2	1-H7	C411	1:J8	1-T8	L108	1:D5	1-L3
C179	1:B2	1-M7	C254	1:G4	1-G0	C412	1:L8	1-T9	L109	1:F5	1-H3
C180	1:A2	1-L8	C255	1:H5	1-F1	C413	1:L8	1-T8	L110	1:E4	1-L5
C181	1:A2	1-L7	C257	1:K2	1-F4	C414	1:K8	1-U9	L114	1:D3	1-P5
C182	1:C2	1-N6	C260	1:H4	1-B2	C415	1:K8	1-U9	L116	1:C4	1-Q5
C184	1:B3	1-M8	C300	1:D8	1-Q1	C416	1:J9	1-U8	L117	1:B3	1-R5
C185	1:E3	1-I6	C301	1:G5	1-H0	C419	1:J7	1-J8	L118	1:B3	1-T5
C186	1:E3	1-J7	*C302	1:G6	1-H0	C420	1:J8	1-K8	L119	1:A2	1-K8
C187	1:E3	1-N8	C303	1:D8	1-Q1	C423	1:K8	1-K9	L120	1:F3	1-L4
C188	1:F3	1-A6	C304	1:H6	1-I0	C424	1:K7	1-L9	L121	1:A4	1-T3
C189	1:B2	1-K6	C305	1:G6	1-I0	C425	1:K6	1-N8	L200	1:G4	1-D2
C190	1:B2	1-K7	C306	1:G6	1-J0	C426	1:L6	1-O9	L201	1:G2	1-G7
C191	1:C1	1-M6	C307	1:G7	1-I1	C427	1:L6	1-P8	L202	1:F1	1-F7

Device	PCB	Circuit	Device	PCB	Circuit	Device	PCB	Circuit	Device	PCB	Circuit
L203	1:F2	1-F7	Q300	2:G8	1-L0	R212	1:J2	1-C7	R302	1:G6	1-I0
L204	1:F2	1-H7	Q301	1:G6	1-I0	R213	1:J1	1-B7	R303	1:G7	1-I1
L205	1:K4	1-A0	Q302	1:G7	1-J0	R214	1:J1	1-B7	*R304	1:H8	1-K0
L206	1:L4	1-B0	Q303	1:J6	1-K1	R217	1:H4	1-H5	R305	1:G7	1-I1
*L207	2:K5	1-B0	Q304	1:J6	1-L1	R218	1:G1	1-D7	*R305A	2:F9	2-E7
L208	1:L5	1-D1	Q305	2:F9	1-O0	R219	1:H1	1-D8	R306	1:G5	1-G0
L209	1:J4	1-D0	*Q306	2:E9	2-F7	R220	1:H1	1-D7	*R307	1:H8	1-M1
L210	1:G4	1-E2	Q307	1:H7	1-H1	R221	1:H1	1-D7	R308	1:G7	1-J1
*L300	1:G7	1-J0	Q308	1:H6	1-I2	RV222	1:H2	1-C6	*R309	1:G7	1-J0
L301	1:G6	1-H0	Q309	1:G5	1-H0	R222	1:K1	1-G8	R310	1:G7	1-K0
*L302	1:G6	1-I0	Q310	1:H7	1-J1	R223	1:H2	1-B5	R311	1:J6	1-K1
L302	1:H7	1-K0	Q311	1:H8	1-J2	R224	1:H2	1-C6	R312	1:J6	1-L1
L303	1:H8	1-L1	Q401	1:L7	1-N9	R225	1:G2	1-B5	*R313	1:G9	1-M0
L304	1:G8	1-L0	Q402	1:L6	1-O9	R226	1:H1	1-C5	*R314	2:G9	1-O0
L305	1:G9	1-M0				R227	1:J2	1-E4	*R315	1:G9	1-M0
L306	1:J6	1-L1	R100	1:A5	1-R3	R228	1:G2	1-C5	R316	1:J6	1-K1
L307	1:H10	1-N0	R101	1:A4	1-S3	R229	1:H3	1-D4	R317	1:G5	1-H0
L308	1:G10	1-N0	R102	1:A4	1-S3	R230	1:J3	1-D4	*R318	2:G9	1-O0
L309	1:G10	1-O1	R103	1:A5	1-S3	R231	1:H3	1-D5	*R319	1:F8	2-E6
L310	1:F9	1-O1	R104	1:B5	1-R3	R232	1:J3	1-D5	R320	1:B10	1-W0
L311	1:F8	1-O1	R105	1:A4	1-S3	R233	1:J3	1-E4	R321	1:D7	1-S1
L312	1:J7	1-M2	R106	1:B4	1-Q3	R234	1:H2	1-E5	R322	1:D8	1-P1
L313	1:B6	1-S0	R107	1:C4	1-P3	R235	1:J2	1-F5	R323	1:G7	1-J1
*L314	1:E8	1-P1	R108	1:D4	1-O3	R236	1:K3	1-F5	RV324	1:E7	1-R2
*L315	1:F8	2-D7	R112	1:E4	1-K5	R237	1:K2	1-F5	R324	1:H8	1-L1
*L316	1:F8	2-D6	R113	1:D4	1-M5	R238	1:K3	1-F4	R325	1:B7	1-T0
*L317	1:D9	2-F8	R114	1:E4	1-L5	R239	1:K2	1-F4	R326	1:D7	1-R2
L318	1:D7	1-R0	R115	1:E4	1-M5	R240	1:K2	1-G4	R327	1:J6	1-T2
L319	1:C6	1-S1	R116	1:E4	1-M5	R241	1:K3	1-G5	R328	1:D7	1-S1
L320	1:B6	1-S0	R117	1:E3	1-L6	R242	1:J3	1-H4	R329	1:D7	1-R1
*L322	1:B8	1-U0	R118	1:E4	1-M6	R243	1:J3	1-H3	R330	1:D7	1-R1
L323	1:B9	1-U0	R119	1:E3	1-O6	R244	1:K3	1-I3	R332	1:D6	1-S0
*L324	1:B10	1-V0	R120	1:F6	1-N4	R245	1:H3	1-D3	R333	1:J6	1-L2
*L325	1:A6	1-T1	R121	1:F6	1-N4	R246	1:J4	1-D0	*R334	1:G8	1-J1
*L326	1:A6	1-T1	R122	1:C4	1-P3	R247	1:K4	1-A0	R337	1:E7	1-T2
L331	1:J6	1-U2	R123	1:B4	1-Q3	R248	1:L3	1-H4	R338	1:H7	1-H2
L401	1:L7	1-N9	R131	1:E6	1-T4	R250	1:J4	1-D2	R339	1:H7	1-H1
			R132	1:D3	1-U6	R251	1:H4	1-E1	R340	1:H7	1-H2
P1	1:L1		R133	1:D6	1-U4	R252	1:J5	1-E0	R341	1:H6	1-H2
P2	1:K7		R135	1:E6	1-U4	R253	1:L5	1-D1	R342	1:H7	1-H2
P3	1:L10		R138	1:C2	1-N6	R254	1:H4	1-E2	R343	1:H6	1-I1
P5	1:B3		#R140	1:F6	1-O4	R255	1:J4	1-D2	R344	1:H7	1-I1
P6	1:J1		#R140A	1:F6	1-O4	R256	1:H5	1-E1	R345	1:H7	1-J1
P7	1:K8		R141	1:F6	1-O4	R257	1:J5	1-E0	R346	1:H7	1-J1
P8	1:K2	1-I9	#R142	1:F7	1-R4	R258	1:J5	1-E0	R347	1:H7	1-J2
P9	1:J2	1-I8	#R142A	1:F7	1-P4	R259	1:K4	1-D0	R348	1:D6	1-T1
			R143	1:E7	1-S4	R260	1:H4	1-E2	R418	1:J2	1-G6
Q100	1:F6	1-O4	#R143A	1:E7	1-Q4	R261	1:K4	1-B0	R420	1:J3	1-H4
Q101	1:B5	1-R3	#R144	1:F7	1-Q4	R262	1:H4	1-A1	R421	1:K3	1-I3
Q102	1:A4	1-S3	#R144A	1:F7	1-R4	R263	1:J4	1-A1	R422	1:K7	1-L9
Q103	1:E4	1-M5	R145	1:F7	1-Q4	R264	1:J4	1-A1	R425	1:L9	1-S9
Q105	1:F6	1-P4	#R145A	1:E7	1-R4	R265	1:J4	1-B1	R426	1:L8	1-T8
Q106	1:F7	1-P4	R146	1:F6	1-R5	R266	1:L4	1-C1	R427	1:L8	1-T8
Q107	1:F7	1-R4	R147	1:E6	1-S5	R267	1:L4	1-D1	R428	1:K7	1-L9
#Q108	1:E7	1-S4	R148	1:E7	1-S5	R268	1:L4	1-D1	R429	1:K6	1-M8
Q109	1:E6	1-T4	R150	1:E6	1-T4	R269	1:G4	1-F1	R430	1:L6	1-O9
Q110	1:E6	1-U4	R151	1:B2	1-K7	R270	1:G4	1-F0	R431	1:K6	1-O8
Q115	1:C1	1-N6	R152	1:B2	1-K6	R271	1:G4	1-G0	R432	1:L6	1-P9
Q200	1:J4	1-A1	RV153	1:B1	1-L6	R272	1:G4	1-G1	R433	1:K6	1-P9
Q201	1:J1	1-B7	R153	1:F6	1-O4	R273	1:G4	1-G2	R434	1:J6	1-Q9
Q202	1:H1	1-D7	R155	1:C1	1-N7	R274	1:H5	1-G1	R435	1:H6	1-R8
Q203	1:H2	1-C5	R156	1:C2	1-N8	R275	1:G4	1-G0	R436	1:H6	1-R8
Q204	1:H2	1-C5	R157	1:C1	1-N7	R276	1:G3	1-B2	R437	1:L9	1-V6
Q205	1:J3	1-D4	R158	1:C1	1-N7	R277	1:K5	1-D0			
Q206	1:J3	1-D5	R159	1:C2	1-P8	R278	1:L3	1-I4	SHIELD	1:D4	
Q207	1:J2	1-E5	R160	1:B2	1-L8	R279	1:K5	1-C1	S4	1:B10	1-W0
Q208	1:J2	1-E5	R161	1:C1	1-M6	R280	1:K5	1-C0			
Q209	1:H3	1-E4	R194	1:C2	1-O6	R282	1:G1	1-E8	TSP5	1:E3	1-M4
Q210	1:K2	1-F4	R195	1:L1	1-A7	R284	1:F3	1-J4	TSP7	1:E7	1-S4
Q211	1:G1	1-E7	R196	1:F3	1-J7	R285	1:L1	1-I4			
Q212	1:L5	1-D0	R197	1:F3	1-I7	R286	1:K1	1-I3			
Q213	1:H4	1-B2	R198	1:C2	1-M7	R287	1:L2	1-I4			
Q214	1:H5	1-E1	R199	1:F3	1-J9	R288	1:L2	1-J4			
Q215	1:J5	1-E0	R200	1:J2	1-I8	R290	1:H4	1-B2			
Q216	1:J5	1-B1	R209	1:J1	1-C8	R300	1:G5	1-G0			
Q217	1:J2	1-C7	R210	1:J2	1-C7	R301	1:G6	1-I0			



T2000-500/-600 RF PCB (IPN 220-01205-14) - Bottom Side



T2000-500/-600 RF PCB (IPN 220-01205-14) - Top Side

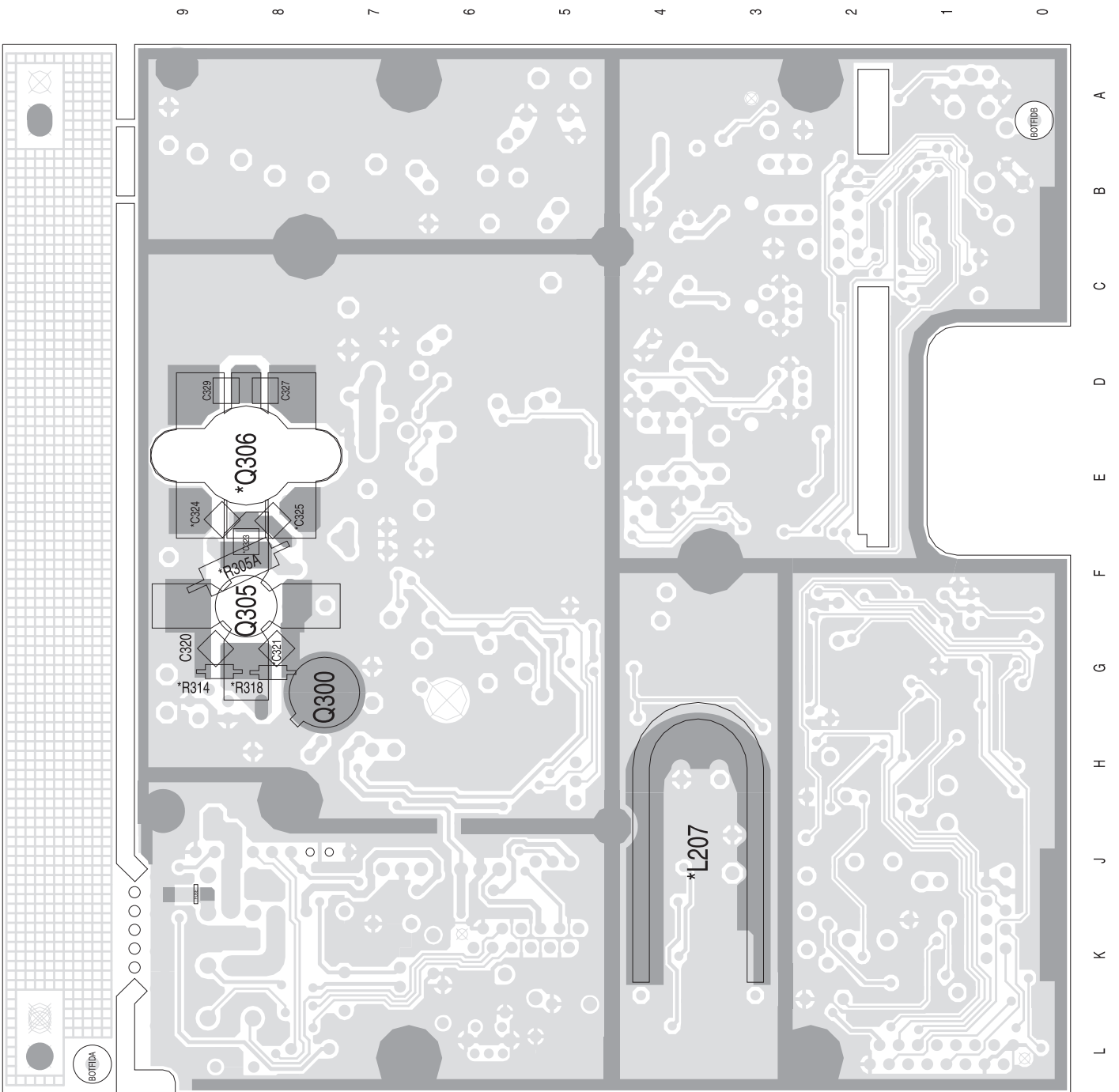
7.5 T2000-500/-600 RF PCB

T2000-500/-600 Grid Reference Index (IPN 220-01205-19)

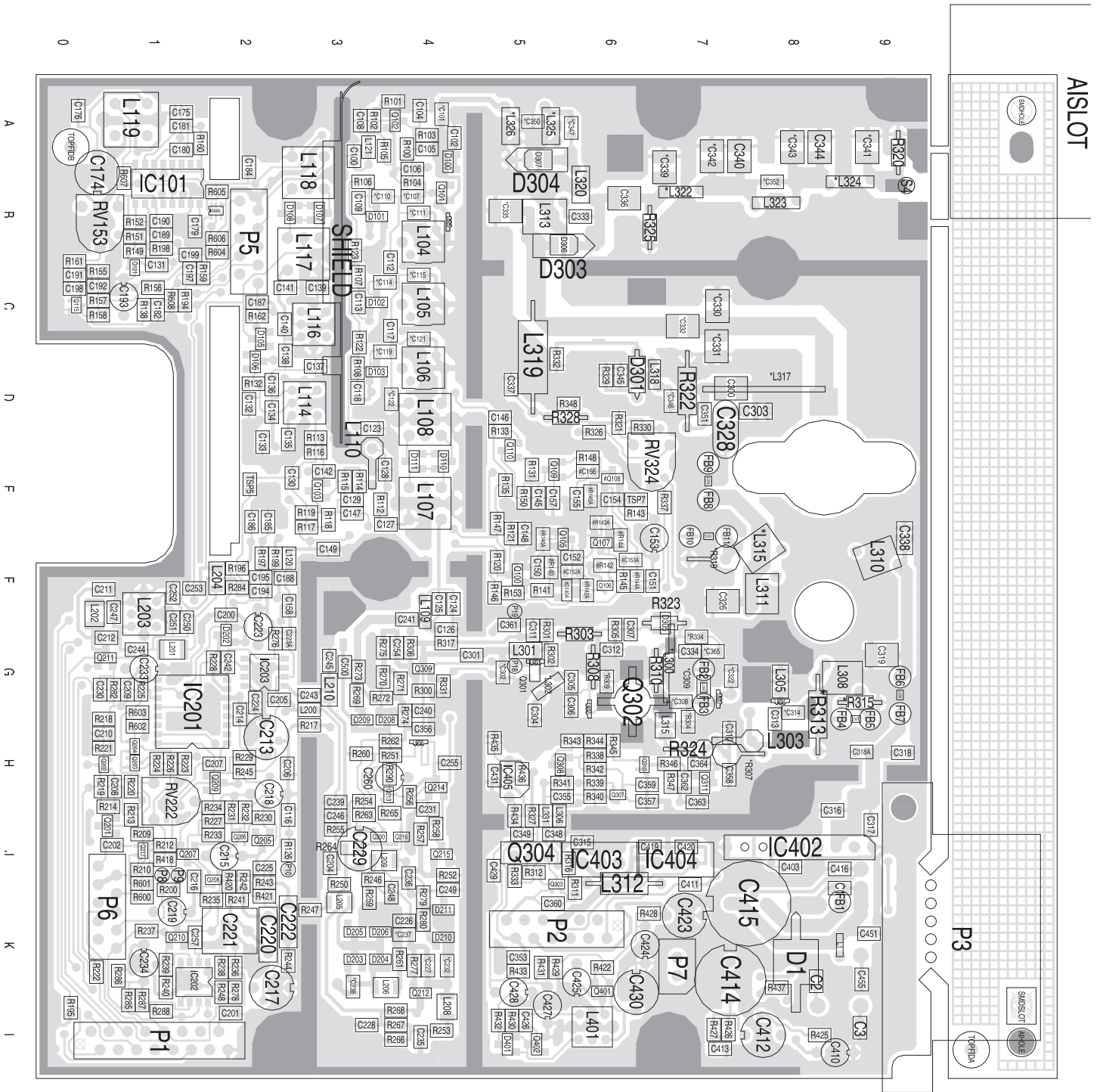
Device	PCB	Circuit	Device	PCB	Circuit	Device	PCB	Circuit	Device	PCB	Circuit
AIHOLE	1:L10	2-G0	C180	1:A2	1-L8	C252	1:F2	1-H7	C364	1:H8	1-K2
AISLOT	1:A10	2-H0	C181	1:A2	1-L8	C253	1:F2	1-I7	*C365	1:G8	1-J0
			C182	1:C2	1-N6	C254	1:G5	1-G0	C403	1:J9	1-S8
BOTFIDA	2:L10	2-M0	C184	1:B3	1-M8	C255	1:H5	1-F1	C410	1:L10	1-S9
BOTFIDB	2:A1	2-N0	C185	1:E3	1-I6	C257	1:K2	1-F4	C411	1:J8	1-T8
			C186	1:E3	1-J7	C260	1:H5	1-B2	C412	1:L9	1-T9
C1	1:J10	1-V9	C187	1:C3	1-Q8	C300	1:D8	1-Q1	C413	1:L8	1-T8
C2	1:K9	1-U8	C188	1:F3	1-A6	C301	1:G6	1-H0	C414	1:K8	1-U9
C3	1:L10	1-V8	C189	1:B2	1-K6	*C302	1:G6	1-H0	C415	1:K9	1-U9
C100	1:A4	1-U3	C190	1:B2	1-K7	C303	1:D9	1-Q1	C416	1:J10	1-U8
*C101	1:A5	1-T3	C191	1:C1	1-M6	C304	1:H6	1-I0	C419	1:J7	1-J8
C102	1:A5	1-S2	C192	1:C1	1-M7	C305	1:G7	1-I0	C420	1:J8	1-K8
C104	1:A5	1-S3	C193	1:C2	1-N7	C306	1:G7	1-I0	C423	1:K8	1-K9
C105	1:A5	1-S3	C194	1:F3	1-A7	C307	1:G7	1-I1	C424	1:K7	1-L9
C106	1:B5	1-R3	C195	1:F3	1-A8	*C308	1:G8	1-K0	C425	1:K7	1-N8
*C107	1:B5	1-R3	C197	1:C2	1-O7	*C309	1:G8	1-K0	C426	1:L6	1-O9
C108	1:A4	1-T3	C198	1:C1	1-M6	C310	1:H8	1-M1	C427	1:L6	1-P8
C109	1:B4	1-Q3	C199	1:B2	1-M7	C311	1:G6	1-H1	C428	1:L6	1-Q8
*C110	1:B5	1-Q3	C200	1:F3	1-B5	C312	1:G7	1-K1	C429	1:J6	1-P8
*C111	1:B5	1-P3	C201	1:L3	1-A4	C313	1:H9	1-M0	C430	1:L7	1-M9
C112	1:C5	1-P3	C202	1:J2	1-D7	*C314	1:G9	1-M0	C431	1:H6	1-R8
C113	1:C4	1-P3	C204	1:J4	1-D2	C315	1:J7	1-M1	C451	1:K10	1-V8
*C114	1:C5	1-P3	C205	1:G3	1-C2	C316	1:J9	1-P2	C455	1:K10	1-V8
*C115	1:C5	1-O3	C206	1:H4	1-J5	C317	1:J10	1-P2	C500	1:G4	1-F1
C116	1:J4	1-P7	C207	1:H3	1-C7	C318	1:H10	1-N2			
C117	1:C5	1-O3	C208	1:H2	1-D7	C318A	1:H10	1-O2	D1	1:K9	1-V9
C118	1:D4	1-O3	C209	1:G2	1-D8	C319	1:G10	1-O1	D100	1:A5	1-S2
*C119	1:D5	1-N3	C210	1:H1	1-E7	C320	2:G10	1-N0	D100	1:A5	1-S2
*C121	1:C5	1-N2	C211	1:F1	1-F7	*C321	2:G9	1-N0	D101	1:B4	1-Q3
*C122	1:D5	1-M3	C212	1:G2	1-F7	*C322	1:G8	1-L0	D102	1:C4	1-P3
C123	1:D4	1-J3	C213	1:H3	1-D4	*C323	2:F9	2-D7	D103	1:D4	1-N3
C124	1:F5	1-I2	C214	1:H3	1-C4	*C324	2:E10	2-E7	D105	1:C3	1-S6
C125	1:F5	1-H3	C215	1:J3	1-E4	*C325	2:E9	2-E7	D106	1:D3	1-U6
C126	1:G5	1-H2	C216	1:J2	1-E5	C326	1:F8	1-P1	D107	1:B4	1-R6
C127	1:E5	1-K5	C217	1:L3	1-F4	C327	2:D9	2-F7	D107	1:B4	1-R5
C128	1:E5	1-K5	C218	1:H3	1-F5	C328	1:D8	1-R1	D108	1:B4	1-R5
C129	1:E4	1-M5	C219	1:K2	1-G4	C329	2:D10	2-F7	D108	1:B4	1-R5
C130	1:E4	1-M5	C220	1:K3	1-G5	*C330	1:C8	2-G7	D110	1:E5	1-K3
C131	1:C2	1-I6	C221	1:K3	1-G5	*C331	1:C8	1-R0	D110	1:E5	1-K3
C132	1:D3	1-U6	C222	1:K4	1-H3	*C332	1:C8	1-R0	D111	1:E5	1-K3
C133	1:E3	1-N5	C223	1:G3	1-F3	C333	1:B7	1-T1	D111	1:E5	1-K2
C134	1:D3	1-O6	C223A	1:G4	1-E3	C334	1:G8	1-J0	#D140A	1:F7	1-P4
C135	1:E4	1-O5	C224	1:G3	1-E2	*C335	1:B6	1-S0	D202	1:G3	1-C5
C136	1:D3	1-O6	C225	1:J3	1-A1	C336	1:B7	1-T0	D202	1:G3	1-C5
C137	1:D4	1-O5	C226	1:K5	1-C0	C337	1:D6	1-T1	D203	1:K4	1-A0
C138	1:D3	1-P6	*C227	1:K5	1-C0	C338	1:F10	1-N1	D204	1:K5	1-A0
C139	1:C4	1-P5	C228	1:L4	1-D1	*C339	1:B8	1-U0	D205	1:K4	1-A0
C140	1:C3	1-P6	C229	1:J4	1-D1	C340	1:A8	1-U0	D206	1:K5	1-A0
C141	1:C3	1-P5	C230	1:G1	1-F7	*C341	1:A10	1-V0	D208	1:H5	1-F0
C142	1:E4	1-L5	C231	1:J5	1-E1	*C342	1:A8	1-U0	D209	1:H4	1-F1
C145	1:E6	1-S4	*C232	1:K5	1-C0	*C343	1:A9	1-V0	D210	1:K5	1-C0
C146	1:D6	1-U4	C233	1:G2	1-G8	C344	1:A9	1-V0	D211	1:K5	1-B1
C147	1:E4	1-N5	C234	1:K2	1-J3	C345	1:D7	1-R1	D301	1:D7	1-R1
C148	1:F6	1-N4	C235	1:L5	1-C1	*C346	1:D8	1-R0	D303	1:B7	1-S0
C149	1:F4	1-L4	C236	1:J5	1-E0	*C347	1:A7	1-T1	D304	1:A6	1-T0
C150	1:F6	1-O4	*C237	1:K5	1-C0	C348	1:J6	1-U2	D305	1:G8	1-L2
C151	1:F8	1-P5	*C238	1:K4	1-B0	C349	1:J6	1-V2	D305	1:G8	1-L2
C152	1:F7	1-P4	C239	1:H4	1-F2	*C350	1:A6	1-T1	D306	1:B7	1-S0
#C152A	1:F7	1-P4	C240	1:G5	1-G1	C351	1:D8	1-Q1	D307	1:A6	1-T0
C153	1:F8	1-Q4	C241	1:F5	1-G3	*C352	1:B9	1-U0	D401	1:L6	1-P9
#C153A	1:F7	1-R4	C242	1:G3	1-B3	C353	1:K6	1-V2	D401	1:L6	1-P9
C154	1:E7	1-S4	C243	1:G4	1-E3	C355	1:H7	1-I2			
C155	1:E7	1-S4	C244	1:G2	1-G7	C356	1:H5	1-G1	FB1	1:K10	1-U9
#C156	1:E7	1-S4	C245	1:G4	1-F2	C357	1:H7	1-H1	FB2	1:G8	1-L0
C157	1:E6	1-T5	C246	1:J4	1-E2	C358	1:H8	1-M1	FB3	1:G8	1-L0
C158	1:F4	1-K4	C247	1:F2	1-G7	C359	1:H7	1-H1	FB4	1:H10	1-N0
C174	1:B1	1-J8	C248	1:J5	1-B1	C360	1:K6	1-K1	FB5	1:H10	1-N0
C175	1:A2	1-K8	C249	1:J5	1-B1	C361	1:G6	1-G2	FB6	1:G10	1-O1
C176	1:A1	1-K8	C250	1:G2	1-H7	C362	1:H8	1-J2	FB7	1:H10	1-O2
C179	1:B2	2-J3	C251	1:G2	1-G7	C363	1:H8	1-I1	FB8	1:E8	1-P1

Device	PCB	Circuit	Device	PCB	Circuit	Device	PCB	Circuit	Device	PCB	Circuit
FB9	1:E8	1-P1	L401	1:L7	1-N9	R114	1:E4	1-L5	R238	1:K3	1-F4
FB10	1:F8	2-D6	L600	1:H5	1-F1	R115	1:E4	1-M5	R239	1:K2	1-F4
FB11	1:F8	2-D7	L601	1:G6	1-H0	R116	1:E4	1-M5	R240	1:L2	1-G4
FUSE	2:J10	1-V9	L602	1:G7	1-J0	R117	1:E4	1-L6	R241	1:K3	1-G5
			L603	1:G8	1-L0	R118	1:E4	1-M6	R242	1:J3	1-H4
IC101	1:B2	1-K6	L604	1:G9	1-M0	R119	1:E4	1-N6	R243	1:J3	1-H3
IC101	1:B2	1-O6	L605	1:B5	1-R2	R120	1:F6	1-N4	R244	1:K4	1-I3
IC101	1:B2	1-L7				R121	1:F6	1-N4	R245	1:H3	1-D3
IC101	1:B2	2-J3	P1	1:L2	2-B4	R122	1:C4	1-P3	R246	1:J4	1-D0
IC201	1:G2	1-B4	P2	1:K7	2-B3	R123	1:B4	1-Q3	R247	1:K4	1-A0
IC202	1:K2	1-G4	P3	1:K10	2-L4	R126	1:J4	1-P7	R248	1:L3	1-H4
IC202	1:K2	1-I5	P5	1:B3	2-M3	R131	1:E6	1-T4	R250	1:J4	1-D2
IC202	1:K2	1-J4	P6	1:K2	2-M4	R132	1:D3	1-U6	R251	1:H5	1-E1
IC203	1:G3	1-E2	P7	1:K8	2-L3	R133	1:D6	1-T4	R252	1:J5	1-E0
IC402	1:J9	1-S8	P8	1:J2	1-G9	R135	1:E6	1-T4	R253	1:L5	1-D1
IC402	1:J9	1-T5	P9	1:J2	1-G9	R138	1:C2	1-N7	R254	1:H4	1-E2
IC403	1:J7	1-K9	P10	1:J4	1-Q7	#R140	1:F6	1-O4	R255	1:J4	1-D2
IC404	1:J8	1-K8	P18	1:G6	1-I0	#R140A	1:F6	1-O4	R256	1:H5	1-E1
IC405	1:H6	1-Q8	P19	1:F6	1-I0	R141	1:F6	1-O4	R257	1:J5	1-E0
IC600	1:B3	1-O7				#R142	1:F7	1-R4	R258	1:J5	1-E0
IC600	1:B3	1-N8	Q100	1:F6	1-O4	#R142A	1:F7	1-P4	R259	1:K4	1-D0
			Q101	1:B5	1-R3	R143	1:E7	1-R4	R260	1:H4	1-E2
L1	1:K10	1-U9	Q102	1:A5	1-S3	#R143A	1:E7	1-Q4	R261	1:K5	1-B0
L104	1:B5	1-Q2	Q103	1:E4	1-M5	#R144	1:F7	1-Q4	R262	1:H5	1-A1
L105	1:C5	1-P2	Q105	1:F7	1-P4	#R144A	1:F7	1-R4	R263	1:J4	1-A1
L106	1:D5	1-N2	Q106	1:F7	1-P4	R145	1:F7	1-Q4	R264	1:J4	1-A1
L107	1:E5	1-J3	Q107	1:F7	1-Q4	#R145A	1:E7	1-R4	R265	1:J5	1-B1
L108	1:D5	1-L3	#Q108	1:E7	1-S4	R146	1:F6	1-R5	R266	1:L5	1-C1
L109	1:F5	1-H3	Q109	1:E6	1-T4	R147	1:E6	1-R5	R267	1:L5	1-D1
L110	1:E4	1-L5	Q110	1:E6	1-T4	R148	1:E7	1-S5	R268	1:L5	1-D1
L114	1:D4	1-O5	Q115	1:C1	1-N6	R149	1:B2	1-J7	R269	1:G4	1-F1
L116	1:C4	1-P5	Q121	1:C2	1-J6	R150	1:E6	1-T4	R270	1:G5	1-F0
L117	1:B4	1-Q5	Q200	1:J5	1-A1	R151	1:B2	1-K7	R271	1:G5	1-G0
L118	1:B4	1-R5	Q201	1:J2	1-C7	R152	1:B2	1-K6	R272	1:G5	1-G1
L119	1:A2	1-K8	Q202	1:H1	1-E7	R153	1:F6	1-O4	R273	1:G4	1-G2
L120	1:F4	1-L4	Q203	1:H2	1-C5	R155	1:C1	1-N7	R274	1:H5	1-G1
L121	1:A4	1-T3	Q204	1:H2	1-C5	R156	1:C2	1-N7	R275	1:G5	1-G0
L200	1:G4	1-D2	Q205	1:J3	1-D4	R157	1:C1	1-N7	R276	1:G3	1-B2
L201	1:G2	1-H7	Q206	1:J3	1-D5	R158	1:C1	1-N7	R277	1:K5	1-D0
L202	1:F1	1-F7	Q207	1:J2	1-E5	R159	1:C3	1-Q7	R278	1:L3	1-I4
L203	1:F2	1-G7	Q208	1:J3	1-E5	R160	1:A3	1-L8	R279	1:K5	1-C1
L204	1:F3	1-H7	Q209	1:H3	1-E4	R161	1:C1	1-M6	R280	1:K5	1-C0
L205	1:K4	1-A0	Q210	1:K2	1-F4	R162	1:C3	1-K8	R282	1:G2	1-E8
L206	1:L5	1-B0	Q211	1:G2	1-E7	R194	1:C2	1-R6	R284	1:F3	1-J4
*L207	2:K5	1-B0	Q212	1:L5	1-D0	R195	1:L1	1-A7	R285	1:L2	1-I4
L208	1:L5	1-D1	Q213	1:H5	1-B2	R196	1:F3	1-J7	R286	1:K2	1-I3
L209	1:J5	1-D0	Q214	1:H5	1-E1	R197	1:F3	1-I7	R287	1:L2	1-I4
L210	1:G4	1-E2	Q215	1:J5	1-E0	R198	1:B2	1-M7	R288	1:L2	1-J4
*L300	1:G8	1-J0	Q216	1:J5	1-B1	R199	1:F3	1-J9	R290	1:H5	1-B2
L301	1:G6	1-H0	Q217	1:J2	1-D7	R200	1:J2	1-G9	R300	1:G5	1-G0
*L302	1:G6	1-I0	Q300	2:G8	1-L0	R209	1:J2	1-D8	R301	1:G6	1-I0
L303	1:H8	1-L1	Q301	1:G6	1-I0	R210	1:J2	1-D7	R302	1:G6	1-I0
L304	1:G8	1-L0	Q302	1:G7	1-J0	R212	1:J2	1-D7	R303	1:G7	1-I1
L305	1:G9	1-M0	Q303	1:J6	1-K1	R213	1:J2	1-C7	*R304	1:H8	1-K0
L306	1:J6	1-L1	Q304	1:J6	1-L1	R214	1:J2	1-C7	R305	1:G7	1-I1
L307	1:H10	1-N0	Q305	2:F9	1-O0	R217	1:H4	1-I5	*R305A	2:F9	2-E7
L308	1:G10	1-N0	*Q306	2:E9	2-F7	R218	1:H1	1-E7	R306	1:G5	1-G0
L309	1:G10	1-O2	Q307	1:H7	1-H1	R219	1:H1	1-E8	*R307	1:H9	1-M1
L310	1:F10	1-O1	Q308	1:H6	1-I2	R220	1:H2	1-E7	R308	1:G7	1-J1
L311	1:F9	1-O1	Q309	1:G5	1-H0	R221	1:H1	1-E7	*R309	1:G7	1-J0
L312	1:J7	1-M2	Q310	1:H7	1-J1	R222	1:K1	1-G8	R310	1:G8	1-K0
L313	1:B6	1-S1	Q311	1:H8	1-J2	R223	1:H2	1-B5	R311	1:J7	1-K1
L314	1:E8	1-P1	Q401	1:L7	1-N9	R224	1:H2	1-C6	R312	1:J6	1-L1
*L315	1:F9	2-D7	Q402	1:L6	1-O9	R225	1:G2	1-B5	*R313	1:H9	1-M0
L315	1:H8	1-K0				R226	1:H2	1-C5	*R314	2:G10	1-O0
*L316	1:F8	2-D6	R100	1:A5	1-R3	R227	1:J3	1-E4	*R315	1:G10	1-M0
*L317	1:D9	2-F8	R101	1:A5	1-S3	R228	1:G3	1-C5	R316	1:J7	1-K1
L318	1:D8	1-R0	R102	1:A4	1-S3	R229	1:H3	1-D4	R317	1:G5	1-H0
L319	1:D6	1-S1	R103	1:A5	1-S3	R230	1:J3	1-D4	*R318	2:G9	1-O0
L320	1:B7	1-T0	R104	1:B5	1-R3	R231	1:J3	1-D5	*R319	1:F8	2-E6
*L322	1:B8	1-U0	R105	1:A5	1-S3	R232	1:J3	1-D5	R320	1:A10	1-W0
L323	1:B9	1-U0	R106	1:B4	1-Q3	R233	1:J3	1-E4	R321	1:D7	1-S1
*L324	1:B10	1-V0	R107	1:C4	1-P3	R234	1:J3	1-E5	R322	1:D8	1-Q1
*L325	1:A6	1-T1	R108	1:D4	1-O3	R235	1:K3	1-F5	R323	1:G8	1-J1
*L326	1:A6	1-T1	R112	1:E5	1-K5	R236	1:K3	1-F5	R324	1:H8	1-L1
L331	1:J6	1-U2	R113	1:D4	1-M5	R237	1:K2	1-F5	R325	1:B7	1-T0

Device	PCB	Circuit	Device	PCB	Circuit	Device	PCB	Circuit	Device	PCB	Circuit
R326	1:D7	1-R2									
R327	1:J6	1-T2									
R328	1:D7	1-S1									
R329	1:D7	1-R1									
R330	1:D7	1-R1									
R331	1:G5	1-H0									
R332	1:D6	1-S0									
R333	1:J6	1-L2									
*R334	1:G8	1-J1									
R337	1:E8	1-T2									
R338	1:H7	1-H2									
R339	1:H7	1-H1									
R340	1:H7	1-H2									
R341	1:H7	1-H2									
R342	1:H7	1-H2									
R343	1:H7	1-I1									
R344	1:H7	1-I1									
R345	1:H7	1-J1									
R346	1:H8	1-J1									
R347	1:H8	1-J2									
R348	1:D7	1-T1									
R418	1:J2	1-E6									
R420	1:J3	1-H4									
R421	1:K3	1-I3									
R422	1:K7	1-L9									
R425	1:L9	1-S9									
R426	1:L8	1-T8									
R427	1:L8	1-T8									
R428	1:K7	1-L9									
R429	1:K6	1-M8									
R430	1:L6	1-O9									
R431	1:K6	1-O8									
R432	1:L6	1-P9									
R433	1:K6	1-P9									
R434	1:J6	1-Q9									
R435	1:H6	1-R8									
R436	1:H6	1-R8									
R437	1:L9	1-V6									
R600	1:K2	1-C8									
R601	1:J2	1-C8									
R602	1:H2	1-B6									
R603	1:G2	1-C6									
R604	1:B3	1-M8									
R605	1:B3	1-M8									
R606	1:B3	1-R7									
R607	1:B2	1-R7									
R608	1:C2	1-P6									
RV153	1:B1	1-L6									
RV222	1:H2	1-C6									
RV324	1:E7	1-R2									
S4	1:B10	1-W0									
SHIELD	1:C4	2-D3									
SMDHOLE1	A10	2-J0									
SMDSLLOT1	L10	2-K0									
TOPFIDA	1:L10	2-L0									
TOPFIDB	1:A1	2-L0									
TSP5	1:E3	1-M4									
TSP7	1:E7	1-S4									



T2000-500/-600 RF PCB (IPN 220-01205-19) - Bottom Side



T2000-500/600 RF PCB (IPN 220-01205-19) - Top Side