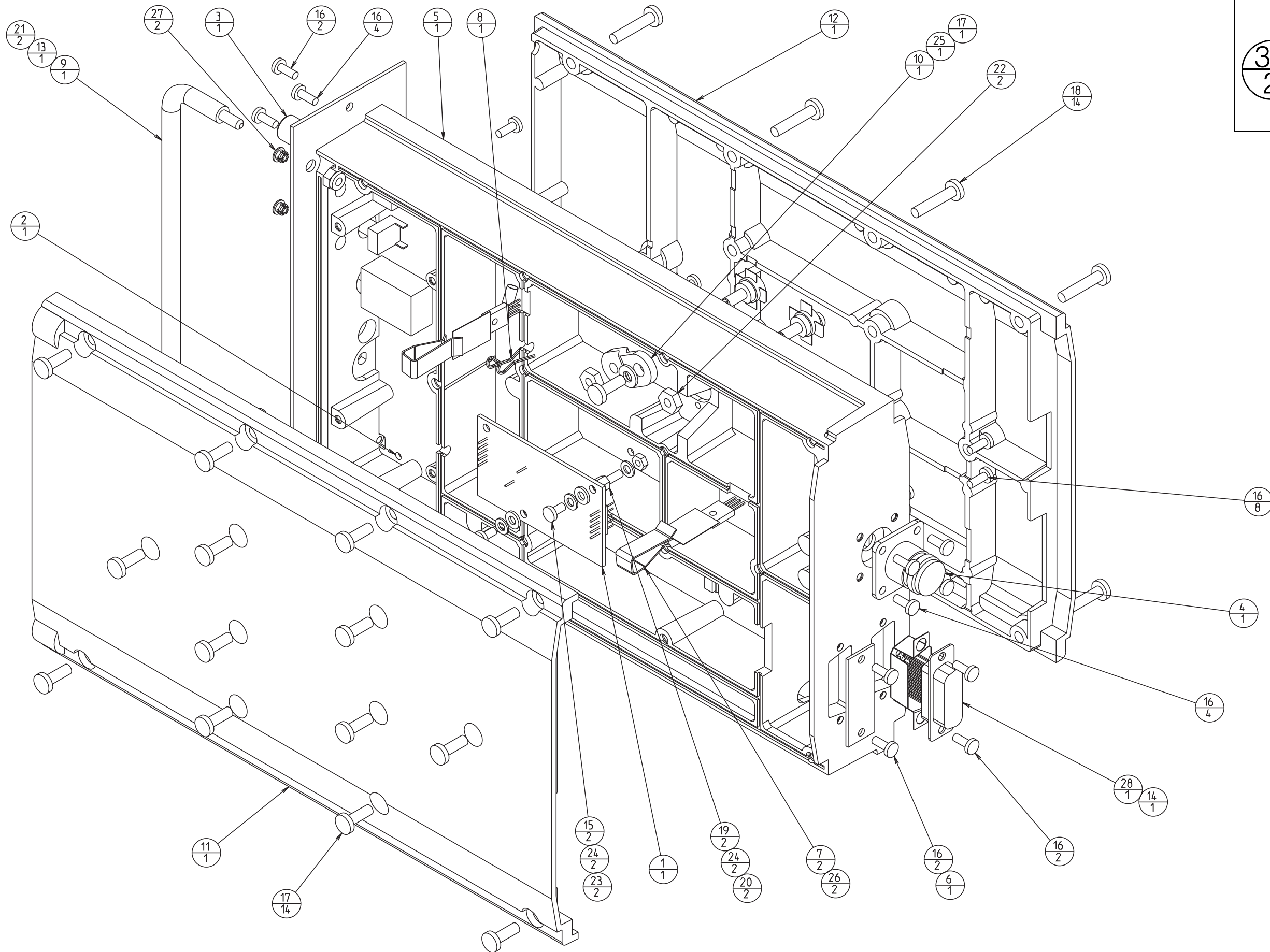


The photograph printed at right will help you to identify the main controls used in tuning and adjusting the T837.

There is a similar photograph in [Figure 1.3](#) which shows the main circuit blocks.

Extending both these fold-outs will allow you to refer to both photographs while using the manual.

Figure 4.5 T837 Main Tuning & Adjustment Controls

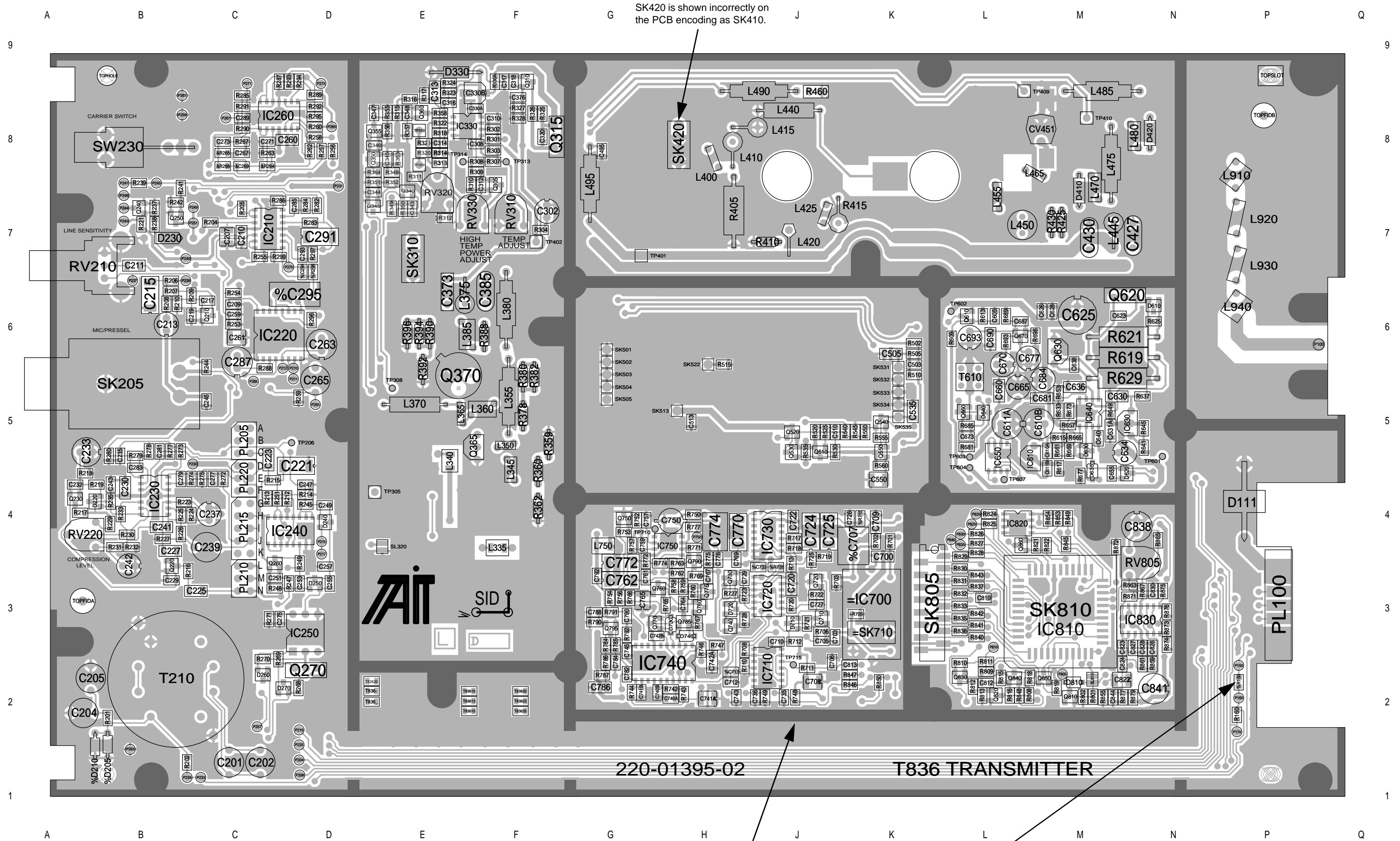


Key

The upper number is the component identification number which appears in the "Legend" column of the Mechanical & Miscellaneous Parts on the facing page.

33
2

The lower number indicates how many of this component are used in this location or function.

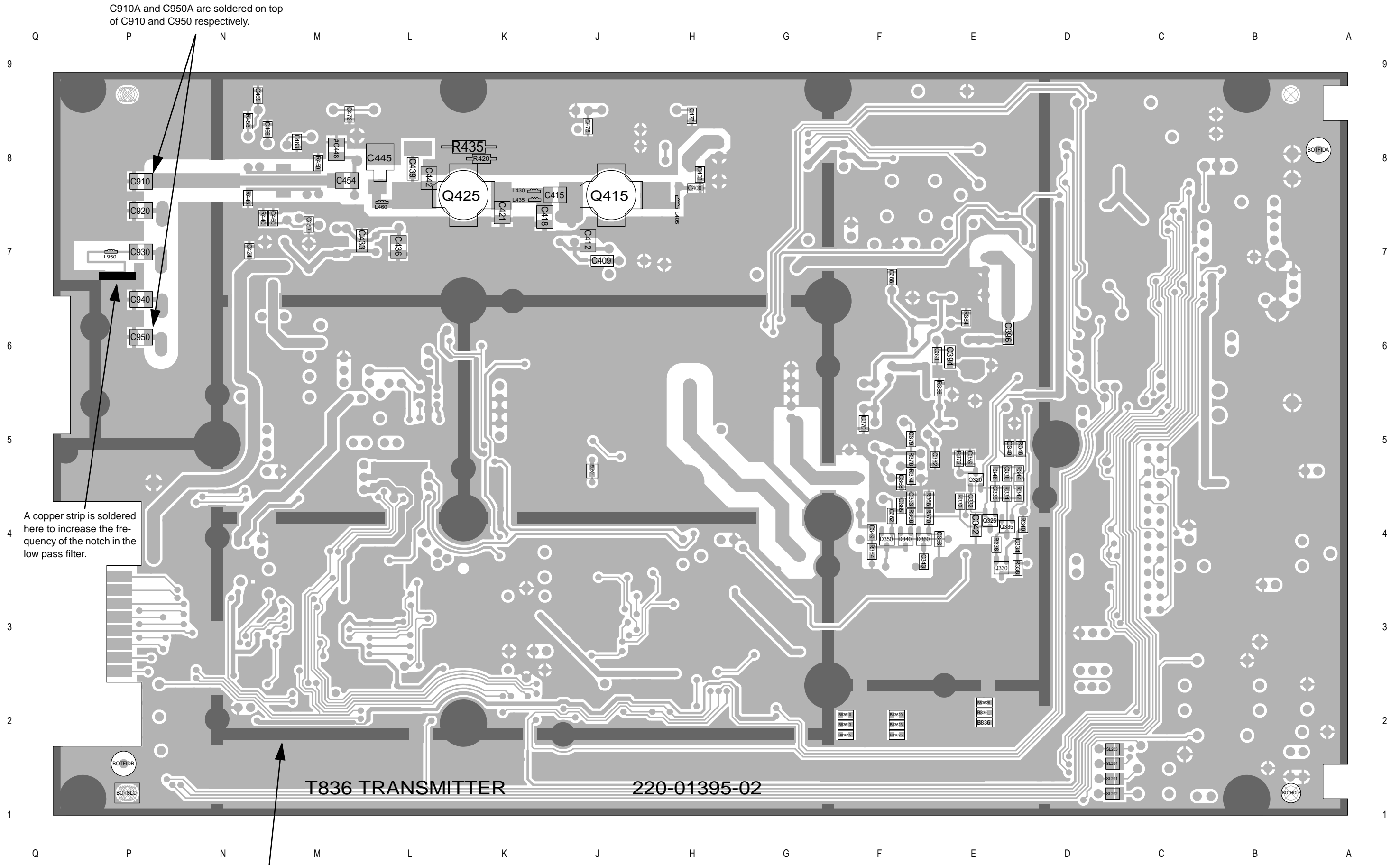


SK420 is shown incorrectly on the PCB encoding as SK410.

%R150 (10Ω) is fitted only when the T836 is used in a Series I rack frame (refer to Part I for full details).

The darker shading shows the outline of the chassis.

T836 PCB Layout - Top Side
220-01395-02

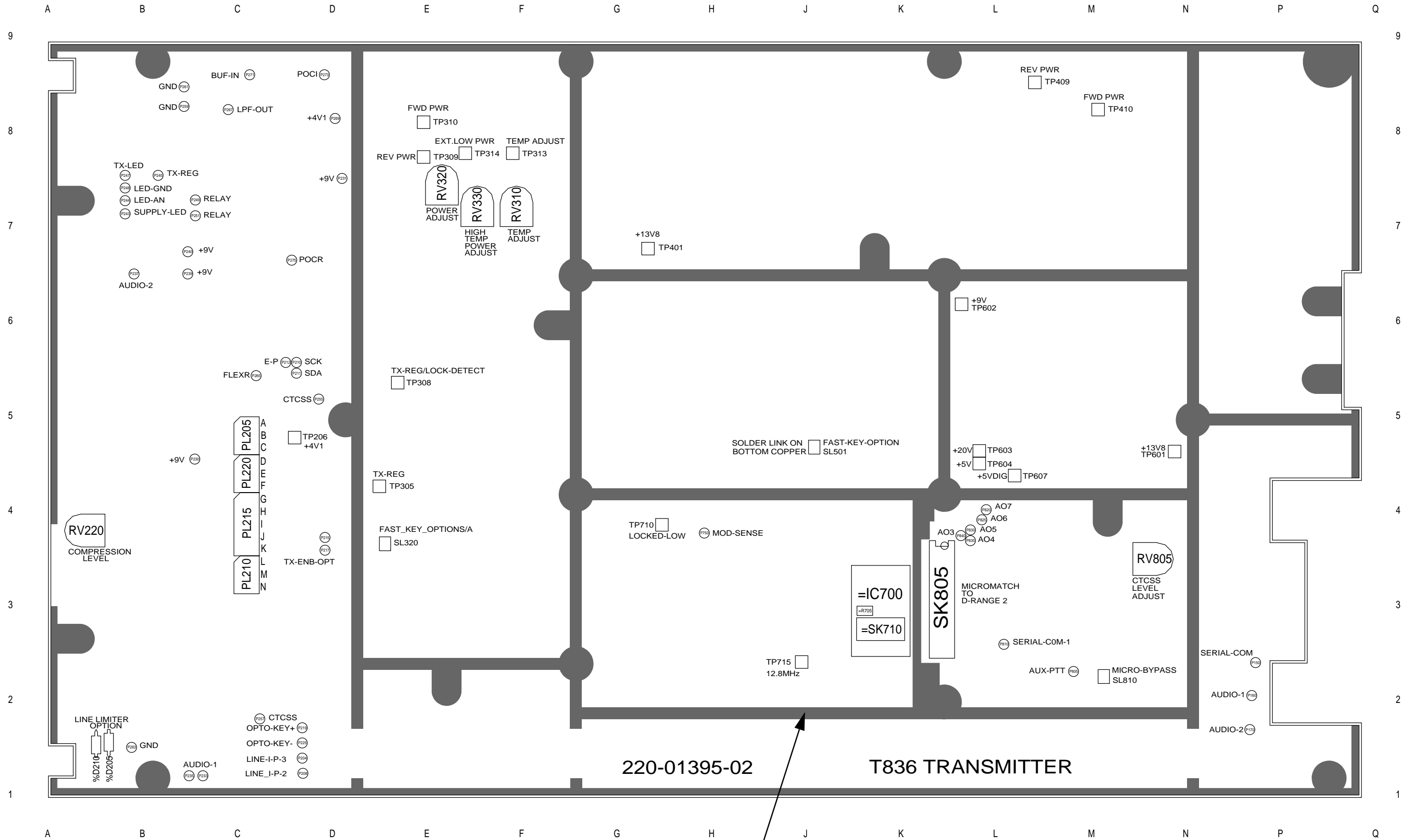


C910A and C950A are soldered on top of C910 and C950 respectively.

A copper strip is soldered here to increase the frequency of the notch in the low pass filter.

The darker shading shows the footprint of the bottom cover.

T836 PCB Layout - Bottom Side
220-01395-02

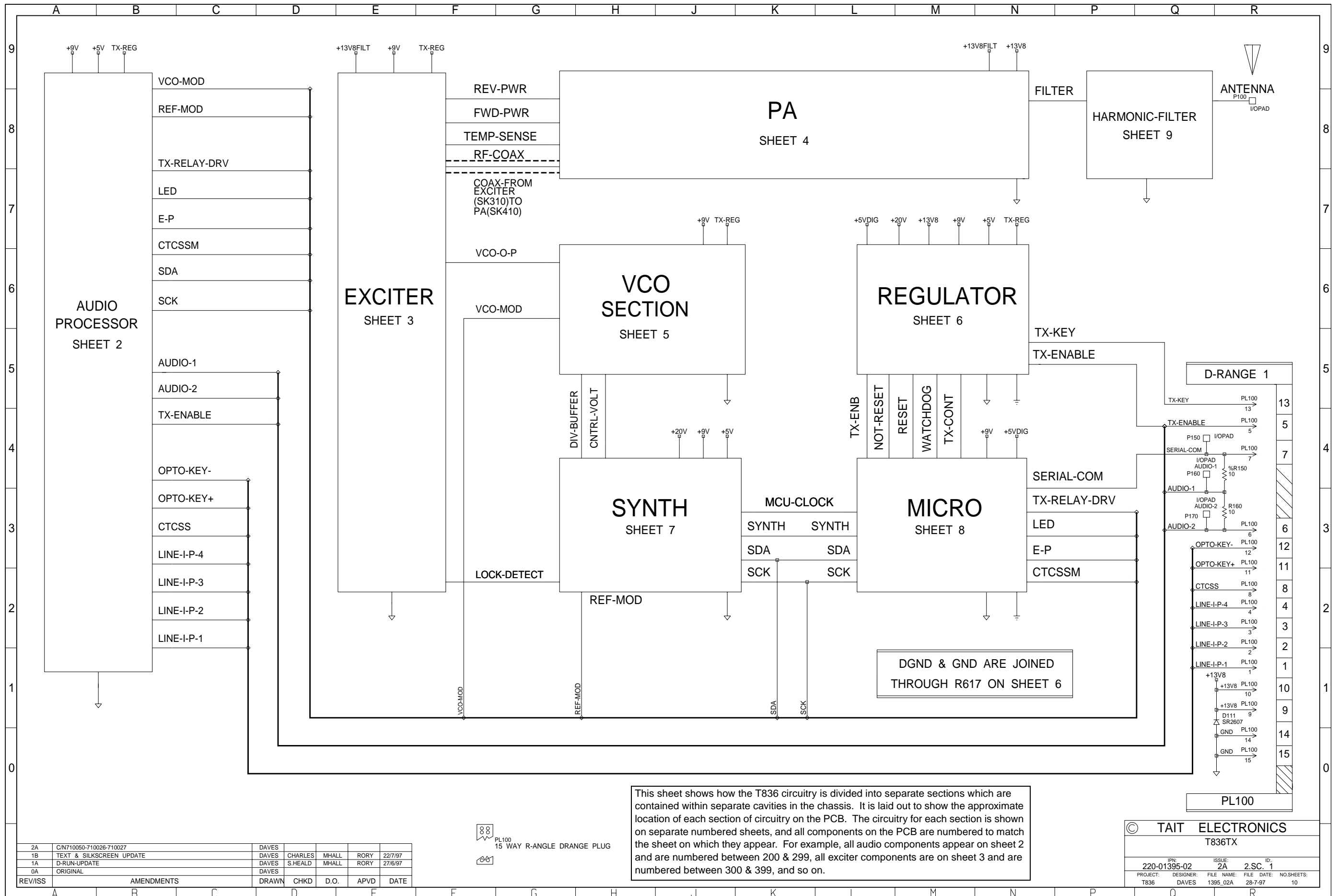


220-01395-02

T836 TRANSMITTER

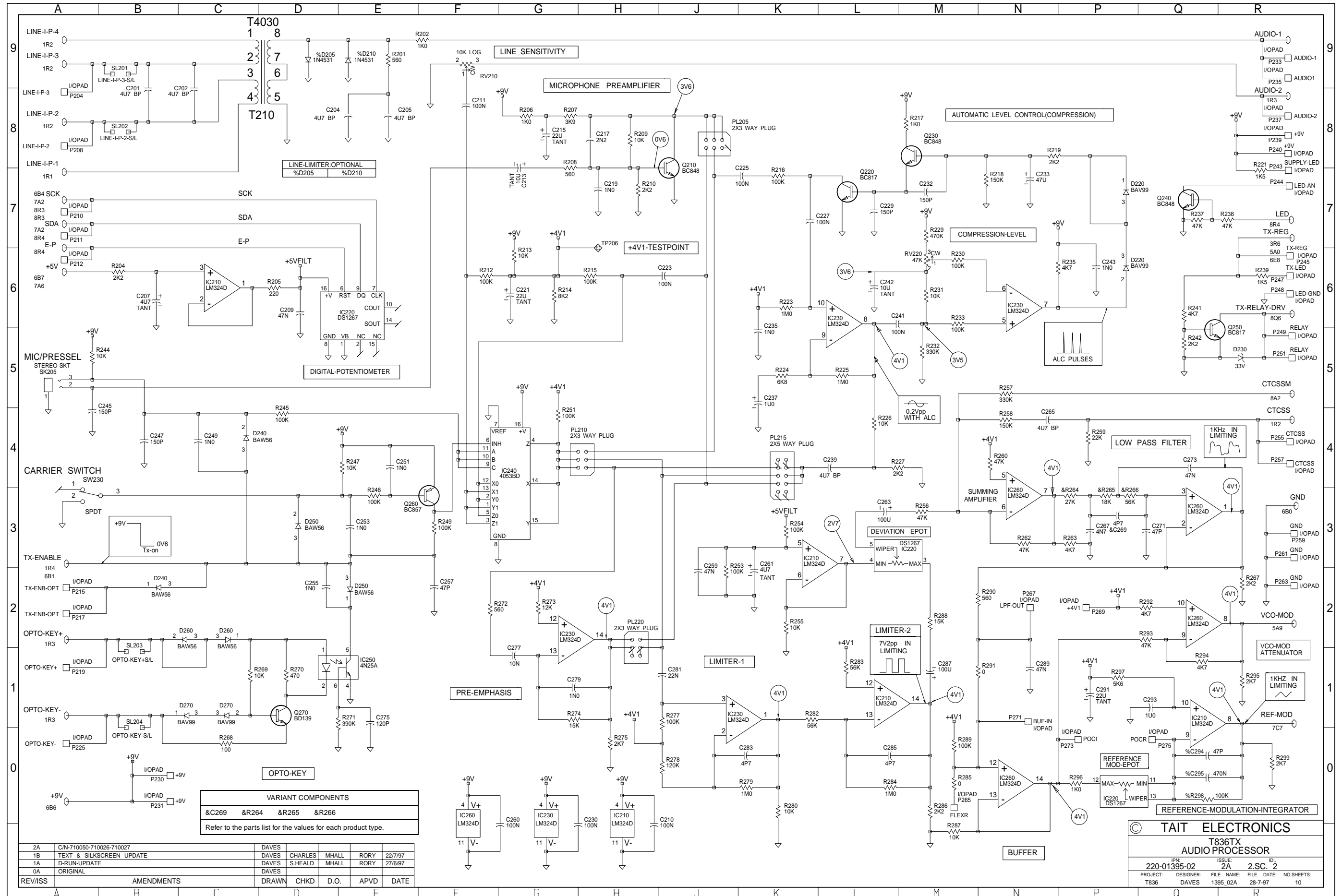
The darker shading shows the outline of the chassis.

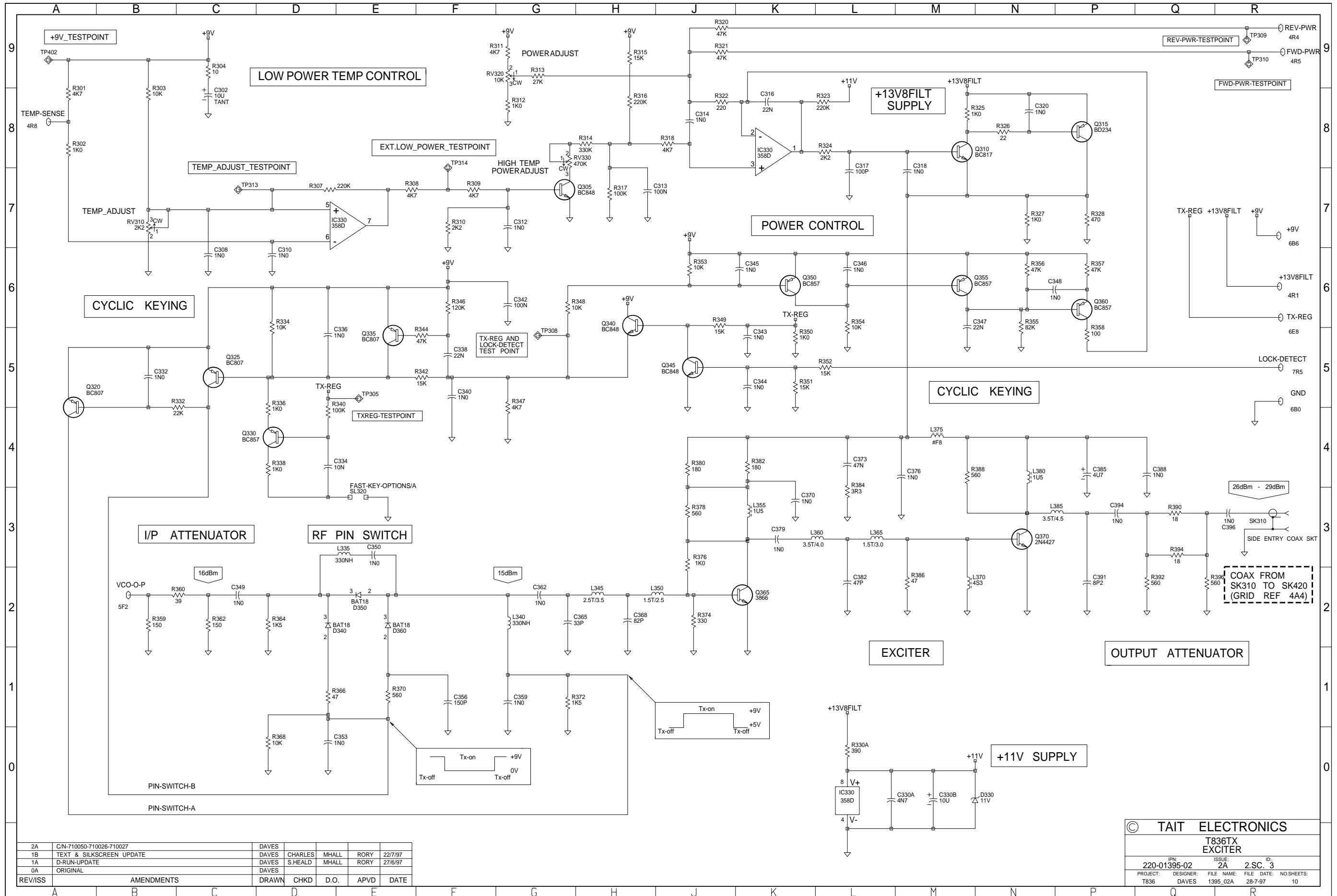
T836 Test Points & Options Connections
220-01395-02 (Top & Bottom Side Shown)



This sheet shows how the T836 circuitry is divided into separate sections which are contained within separate cavities in the chassis. It is laid out to show the approximate location of each section of circuitry on the PCB. The circuitry for each section is shown on separate numbered sheets, and all components on the PCB are numbered to match the sheet on which they appear. For example, all audio components appear on sheet 2 and are numbered between 200 & 299, all exciter components are on sheet 3 and are numbered between 300 & 399, and so on.

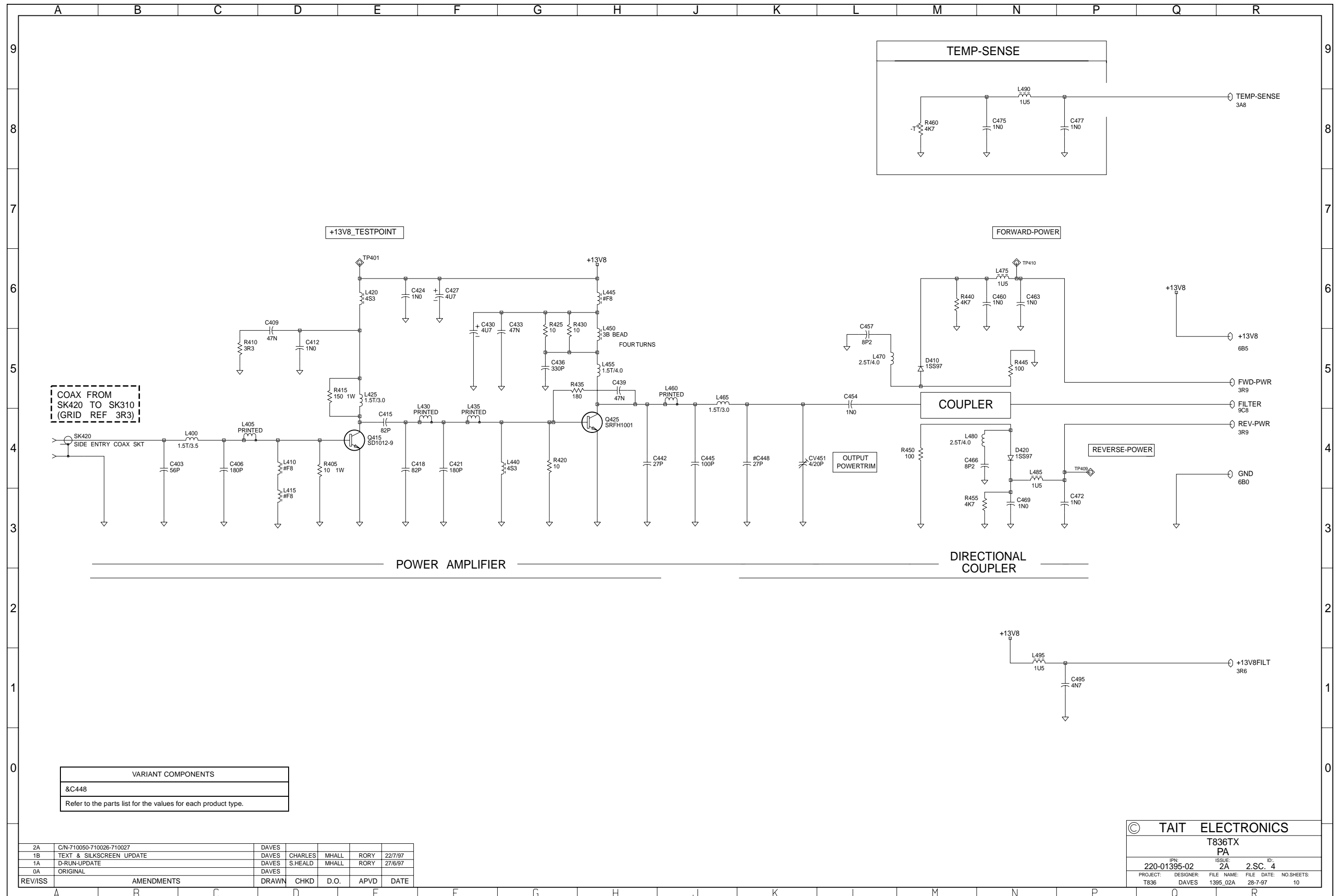
© TAIT ELECTRONICS	
T836TX	
IPN: 220-01395-02	ISSUE: 2A ID: 1
PROJECT: T836	DESIGNER: DAVES
FILE NAME: 1395_02A	FILE DATE: 28-7-97
	NO. SHEETS: 10

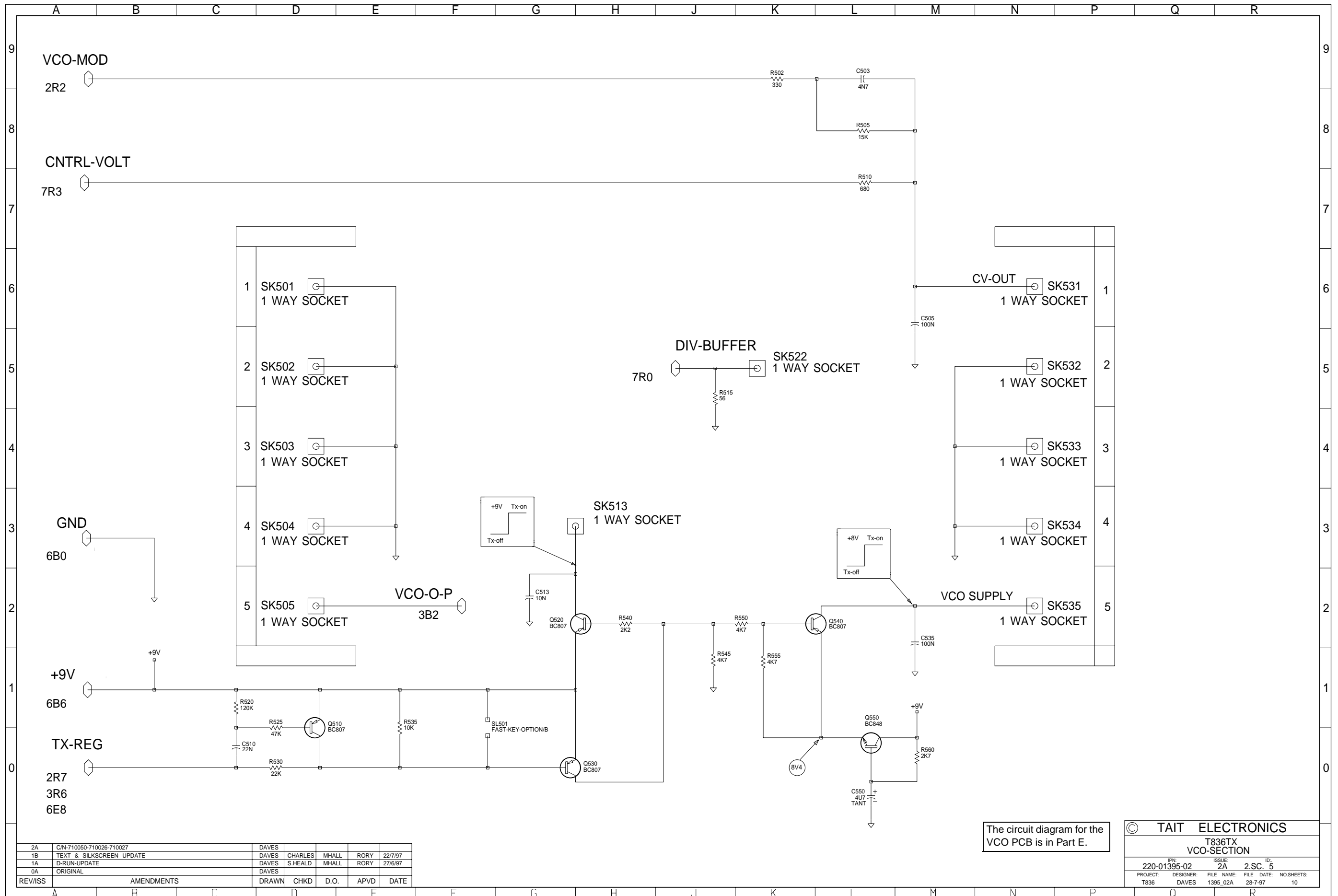




2A	C/N-710050-710026-710027	DAVES				
1B	TEXT & SILKSCREEN UPDATE	DAVES	CHARLES	MHALL	RORY	22/7/97
1A	D-RUN-UPDATE	DAVES	S.HEALD	MHALL	RORY	27/6/97
0A	ORIGINAL	DAVES				
REV/ISS	AMENDMENTS	DRAWN	CHKD	D.O.	APVD	DATE

© TAIT ELECTRONICS			
T836TX EXCITER			
IPN	ISSUE	ID	
220-01395-02	2A	2.SC. 3	
PROJECT:	DESIGNER:	FILE NAME:	FILE DATE:
T836	DAVES	1395_02A	28-7-97
			NO.SHEETS: 10

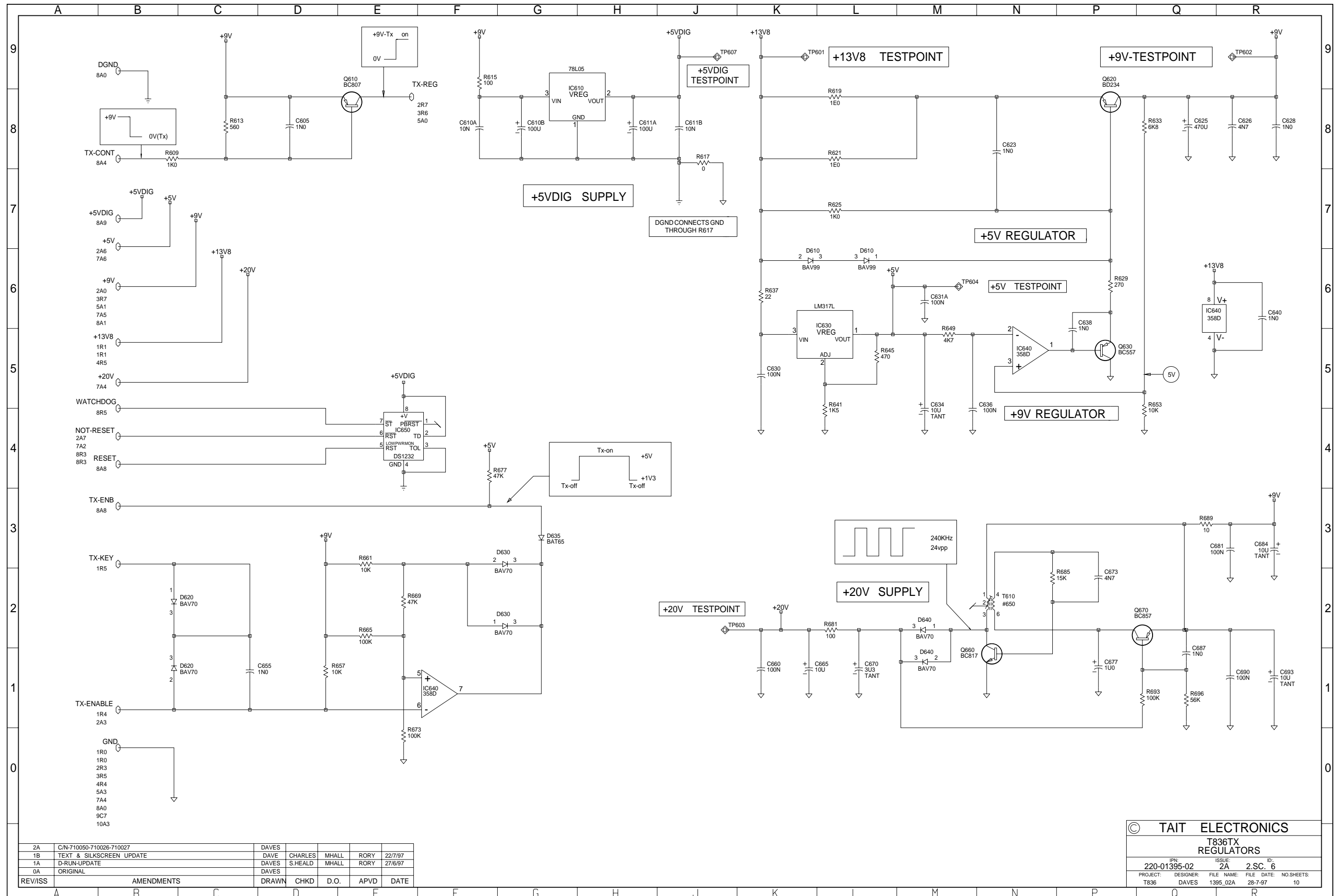




2A	C/N-710050-710026-710027	DAVES				
1B	TEXT & SILKSCREEN UPDATE	DAVES	CHARLES	MHALL	RORY	22/7/97
1A	D-RUN-UPDATE	DAVES	S.HEALD	MHALL	RORY	27/6/97
0A	ORIGINAL	DAVES				
REV/ISS	AMENDMENTS	DRAWN	CHKD	D.O.	APVD	DATE

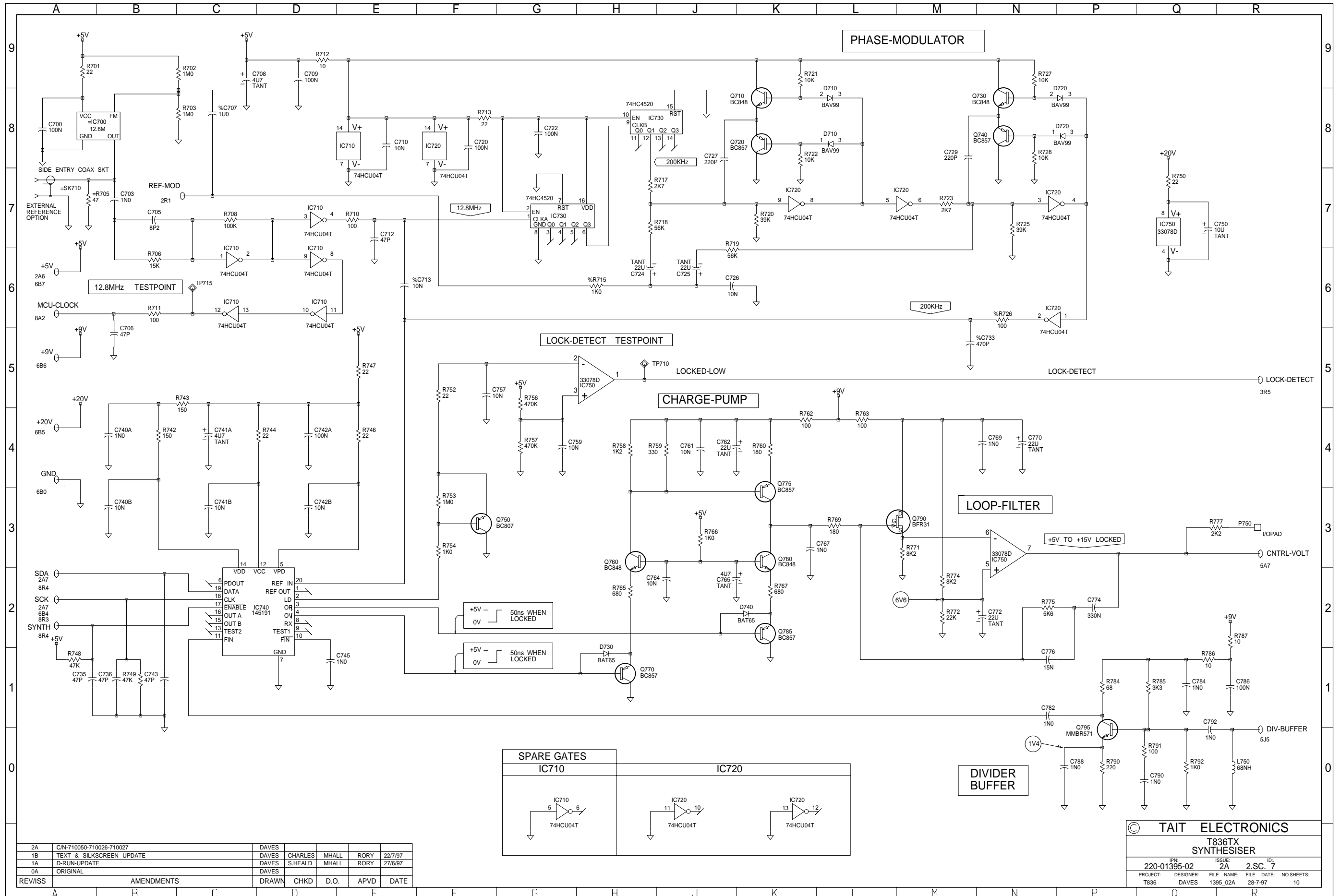
The circuit diagram for the VCO PCB is in Part E.

© TAIT ELECTRONICS			
T836TX			
VCO-SECTION			
IPN:	ISSUE:	FILE NAME:	ID:
220-01395-02	2A	1395_02A	2.SC. 5
PROJECT:	DESIGNER:	FILE DATE:	NO.SHEETS:
T836	DAVES	1395_02A	28-7-97 10



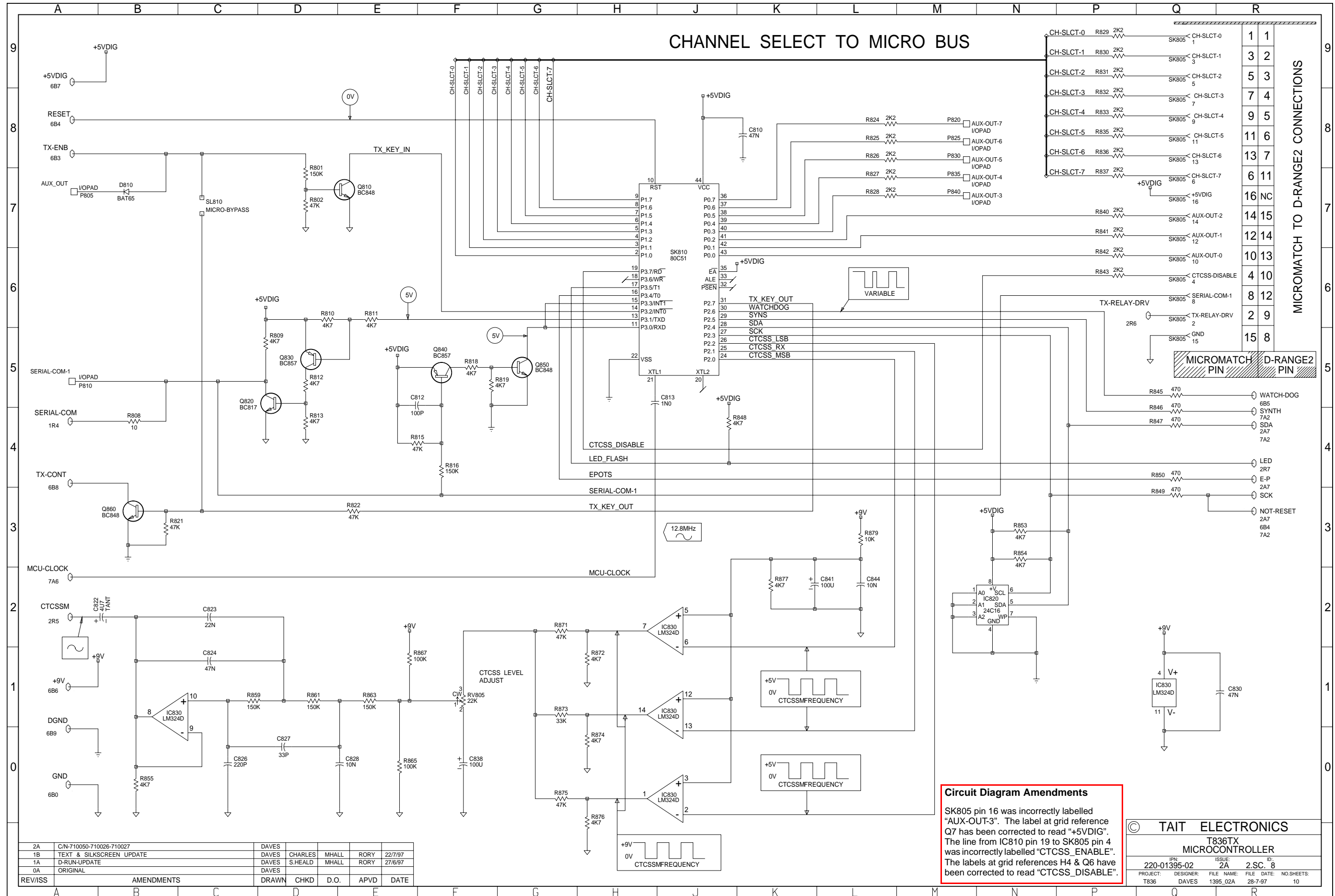
2A	C/N-710050-710026-710027	DAVES				
1B	TEXT & SILKSCREEN UPDATE	DAVE	CHARLES	MHALL	RORY	22/7/97
1A	D-RUN-UPDATE	DAVES	S.HEALD	MHALL	RORY	27/6/97
0A	ORIGINAL	DAVES				
REV/ISS	AMENDMENTS	DRAWN	CHKD	D.O.	APVD	DATE

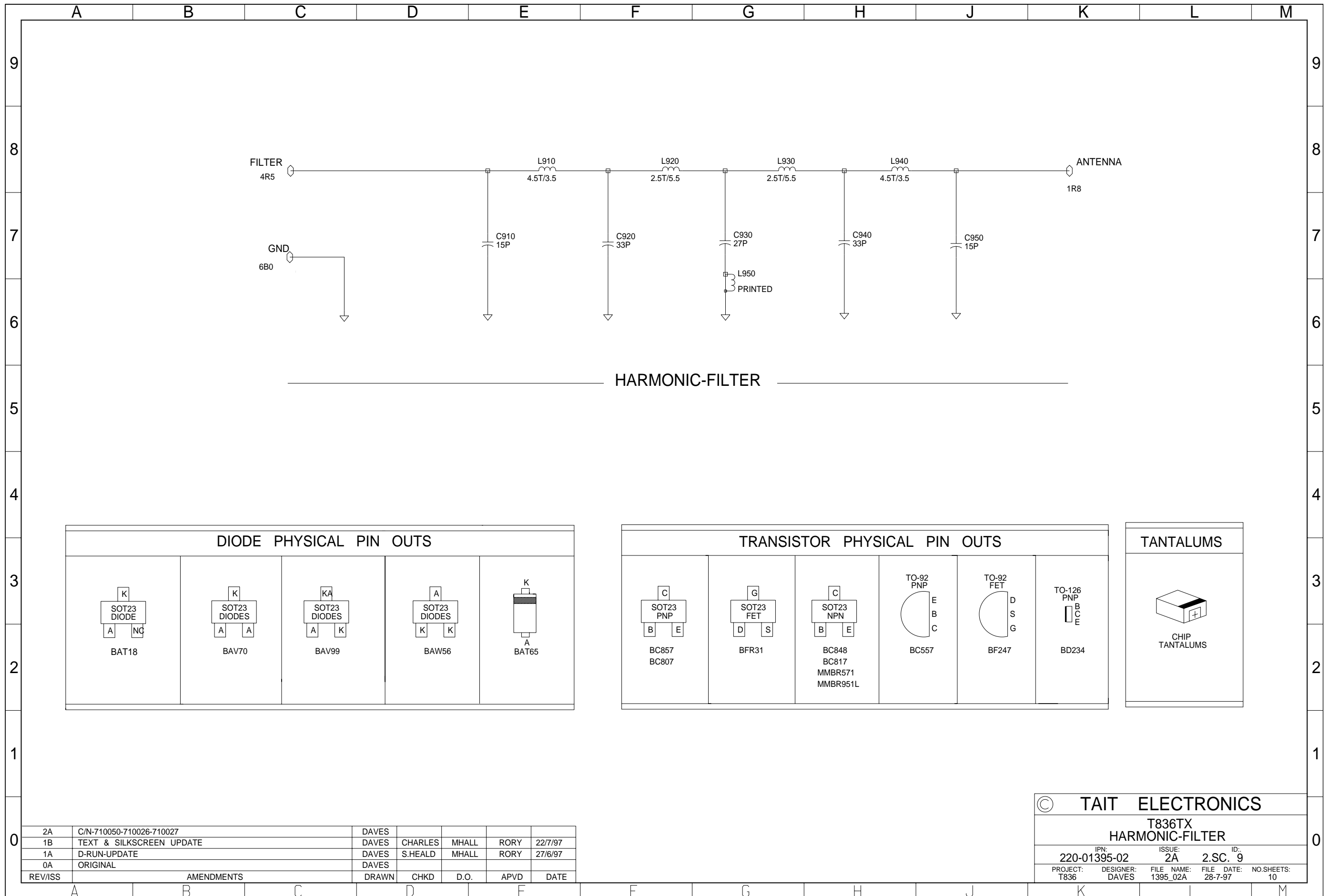
© TAIT ELECTRONICS					
T836TX REGULATORS					
IPN:	220-01395-02	ISSUE:	2A	ID:	2.S.C. 6
PROJECT:	T836	DESIGNER:	DAVES	FILE NAME:	1395_02A
		FILE DATE:	28-7-97	NO SHEETS:	10



2A	C/N-710050-710026-710027	DAVES	CHARLES	MHALL	RORY	22/7/97
1B	TEXT & SILKSCREEN UPDATE	DAVES	S.HEALD	MHALL	RORY	27/6/97
1A	D-RUN-UPDATE	DAVES				
0A	ORIGINAL	DAVES				
REV/ISS	AMENDMENTS	DRAWN	CHKD	D.O.	APVD	DATE

© TAIT ELECTRONICS
T836TX SYNTHESISER
IPN: 220-01395-02
ISSUE: 2A
ID: 2.SC. 7
PROJECT: T836
DESIGNER: DAVES
FILE NAME: 1395_02A
FILE DATE: 28-7-97
NO. SHEETS: 10





DIODE PHYSICAL PIN OUTS				
 BAT18	 BAV70	 BAV99	 BAW56	 BAT65

TRANSISTOR PHYSICAL PIN OUTS					
 BC857 BC807	 BFR31	 BC848 BC817 MMBR571 MMBR951L	 BC557	 BF247	 BD234

TANTALUMS
 CHIP TANTALUMS

2A	C/N-710050-710026-710027	DAVES				
1B	TEXT & SILKSCREEN UPDATE	DAVES	CHARLES	MHALL	RORY	22/7/97
1A	D-RUN-UPDATE	DAVES	S.HEALD	MHALL	RORY	27/6/97
0A	ORIGINAL	DAVES				
REV/ISS	AMENDMENTS	DRAWN	CHKD	D.O.	APVD	DATE

© TAIT ELECTRONICS					
T836TX HARMONIC-FILTER					
IPN:	220-01395-02	ISSUE:	2A	ID.:	2.SC. 9
PROJECT:	T836	DESIGNER:	DAVES	FILE NAME:	1395_02A
		FILE DATE:	28-7-97	NO.SHEETS:	10