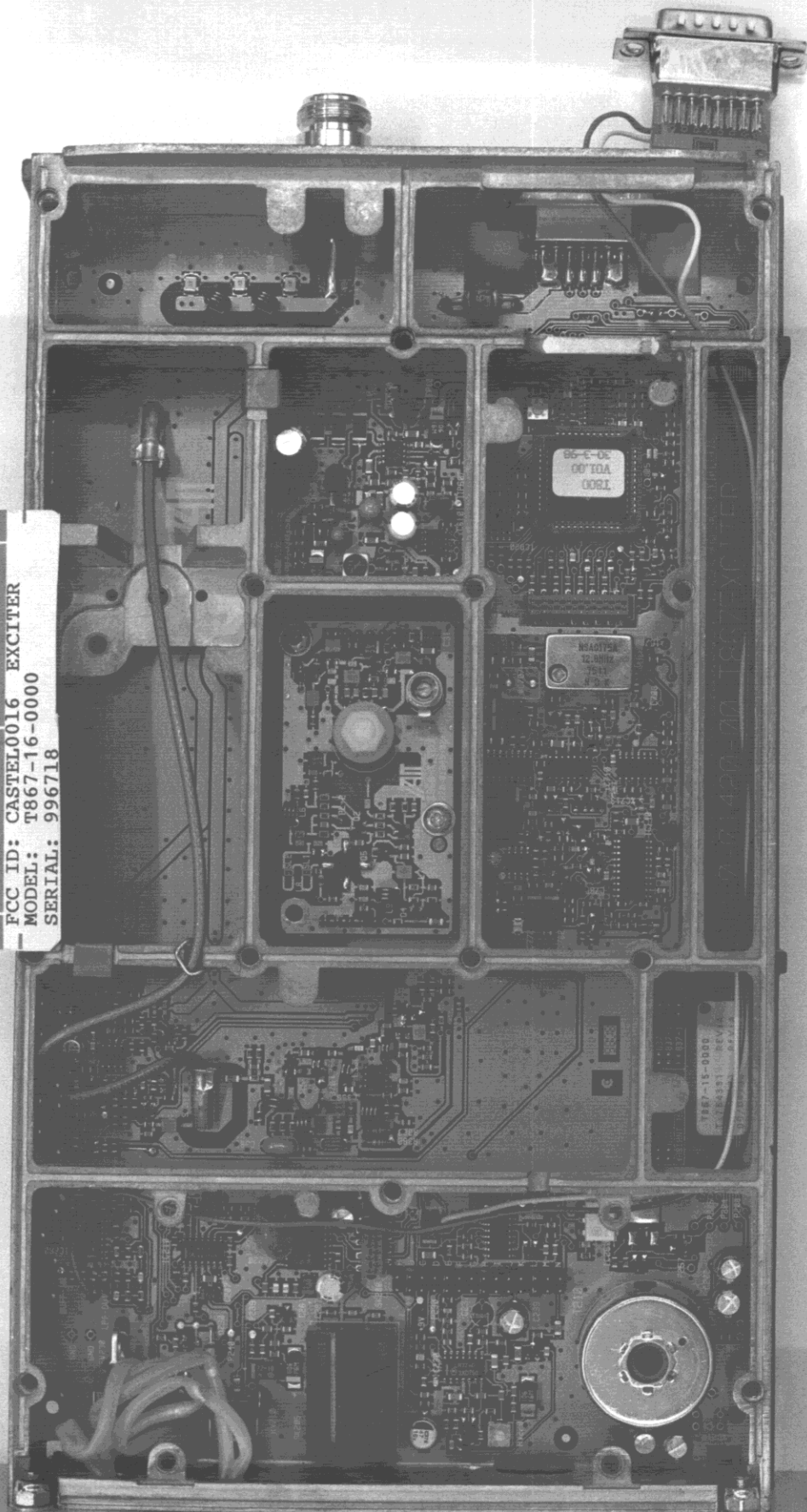


FCC ID: CASTEL0016 EXCITER
MODEL: T867-16-0000
SERIAL: 996718



15-0000
T864391 REV
EA21 REV1A



FCC ID: CASTEL0016 EXCITER
MODEL: T867-16-0000
SERIAL: 996718

NSA0175A
12.8MHz
7511
N D K

T860
0010A
30-3-98

0010A
30-3-98

XE8674410
X:751890
REV:02

R388
R387

355
378

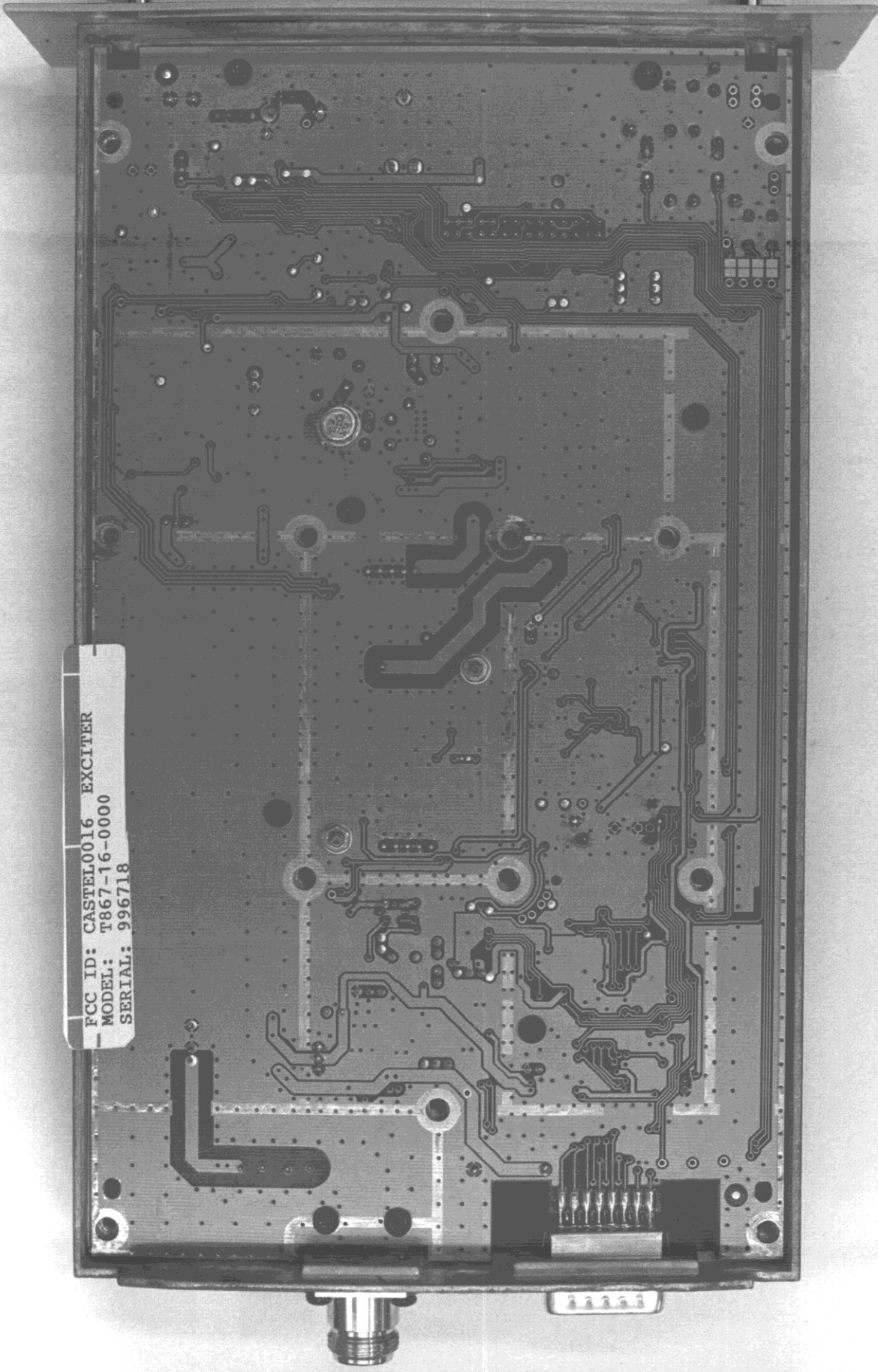
C38

OKS01
OKS02
OKS03
OKS04
OKS05

S1522
O-1-1

0010A
30-3-98

FCC ID: CASTEL0016 EXCITER
MODEL: T867-16-0000
SERIAL: 996718



FCC ID: CASTEL0016 PWR. AMP.
MODEL: T869-10-0000
Serial: 949331

R106
50 OHM
HYBRID
TERM.

C189

MRF196A
9508
MALAYSIA

MRF196A
9505
MALAYSIA

MRF196A
9508
MALAYSIA

MRF196A
9505
MALAYSIA

CELCON HIGH RF V

105
50 OHM

0.05
0.05
0.05

RV43 RV48
FPHE1 FPAL1
RV52 RV74
FPAL1 PVR1HP
RV65

REV-PWR

LOW PASS FILTER

DUAL DIRECTIONAL COUPLER

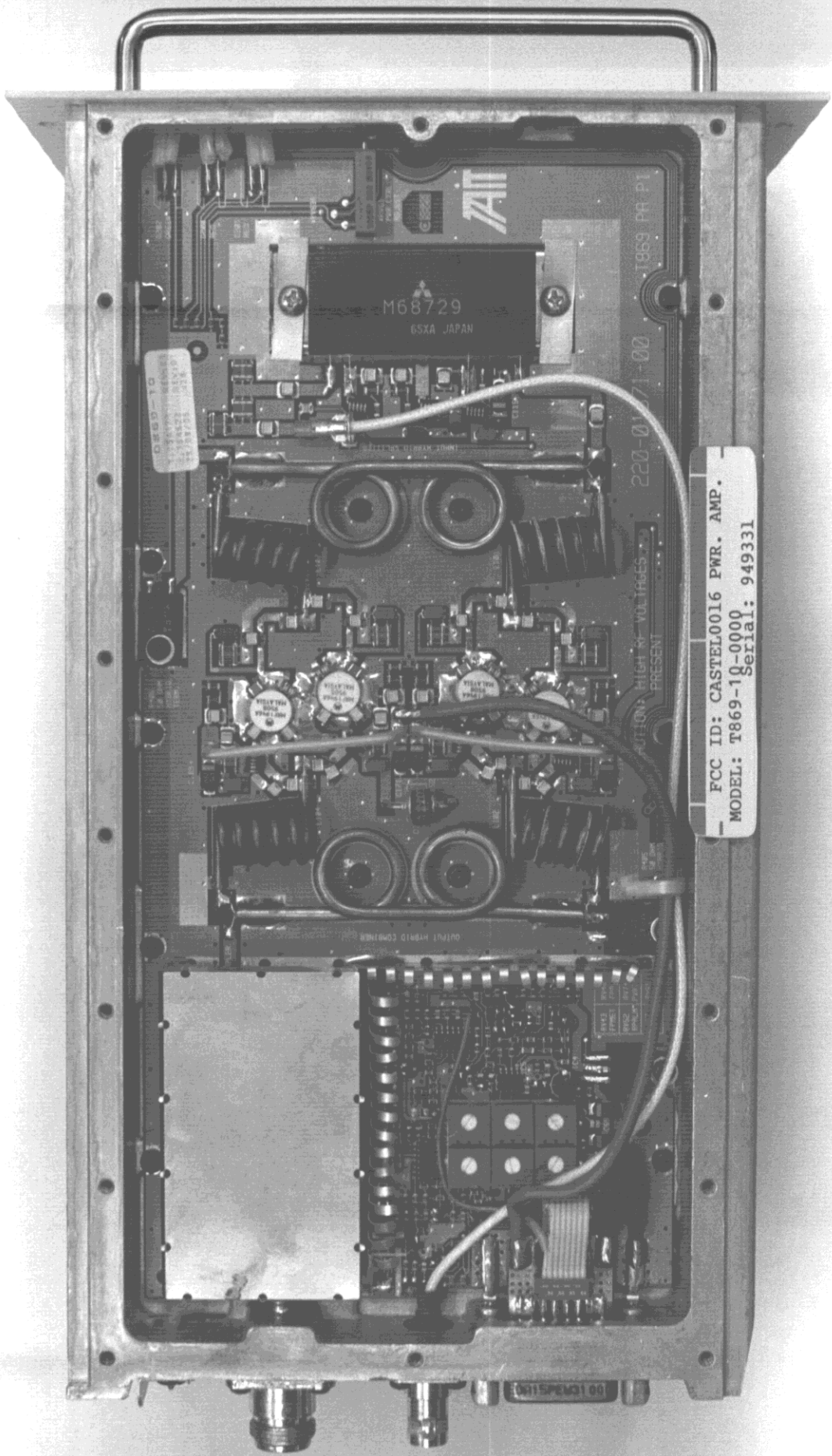
FWD-PWR

C202
NOTCH

TEMP SENSE

OUTPUT HYBRID COMBINER

0015PEW31 000



DSB-D TO
T869-10-0000
M68729 6SXA JAPAN
10/15/75

M68729
6SXA JAPAN

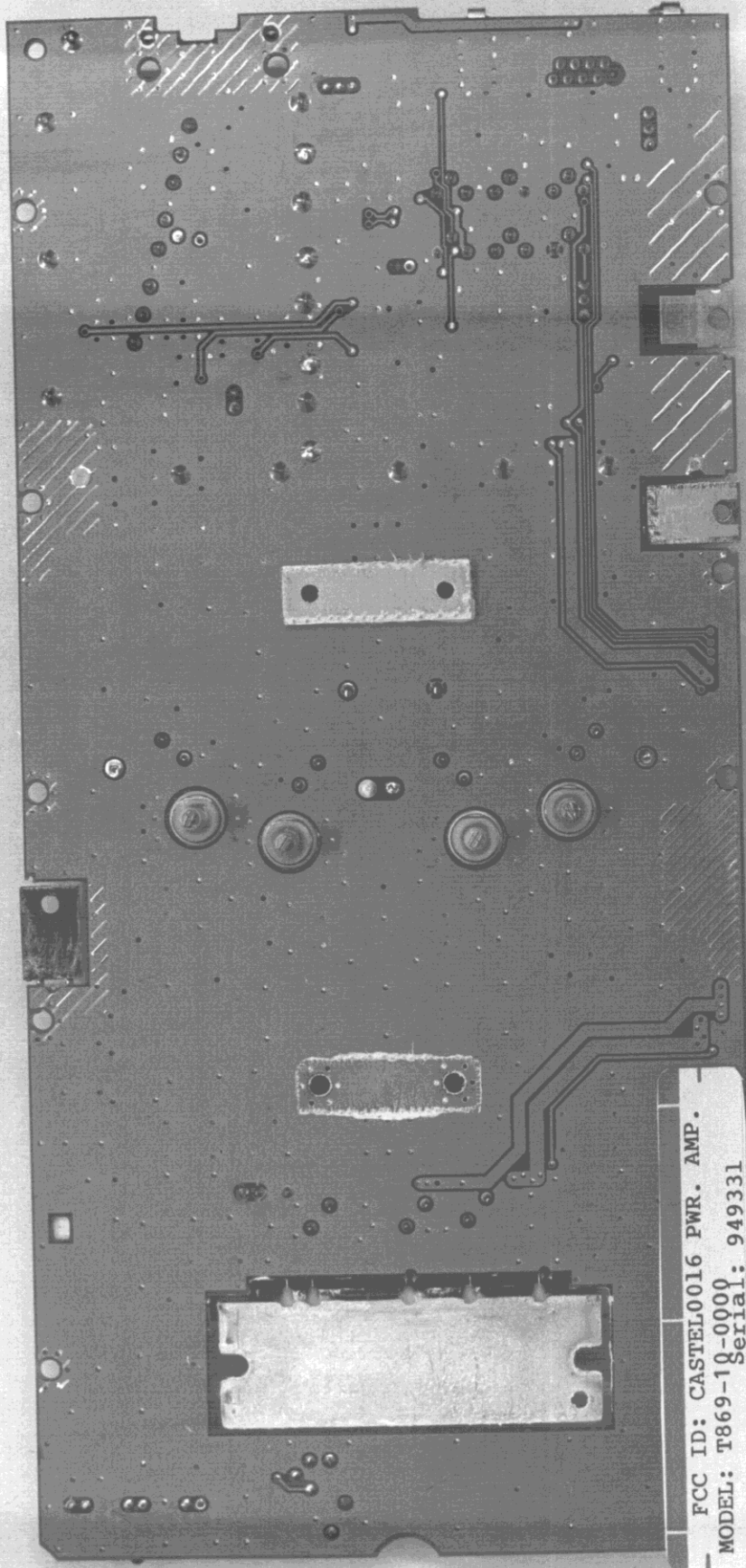
220-01/1-00 T869 PR P1

FCC ID: CASTEL0016 PWR. AMP.
MODEL: T869-10-0000
Serial: 949331

OPTION HIGH VOLTAGES
PRESENT

OUTPUT HYBRID COMBINER

0015P6C31 00



FCC ID: CASTEL0016 PWR. AMP.
MODEL: T869-10-0000
Serial: 949331