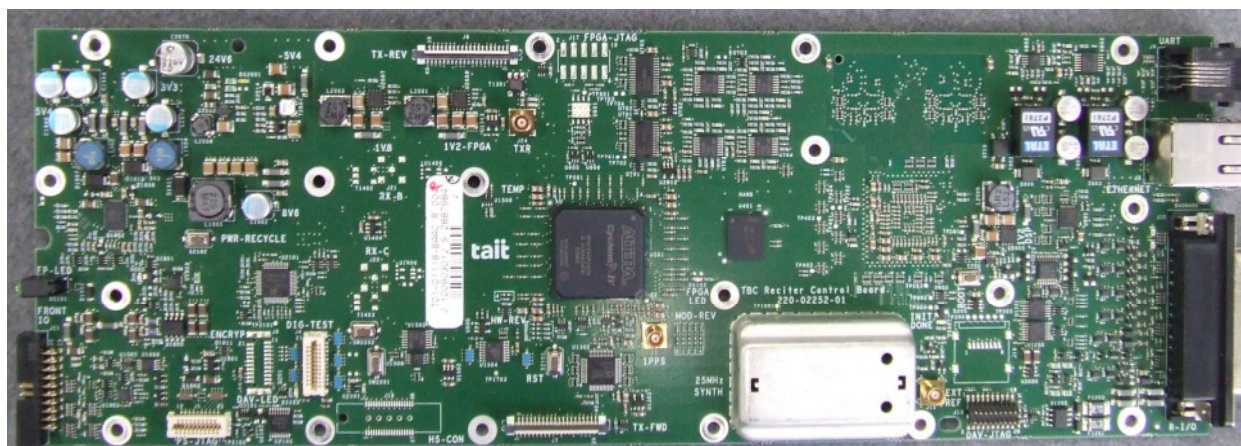
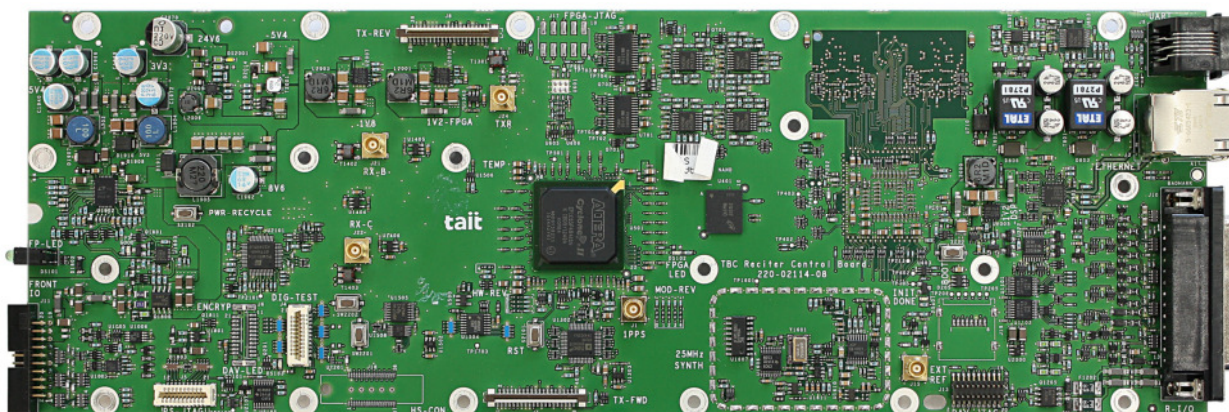


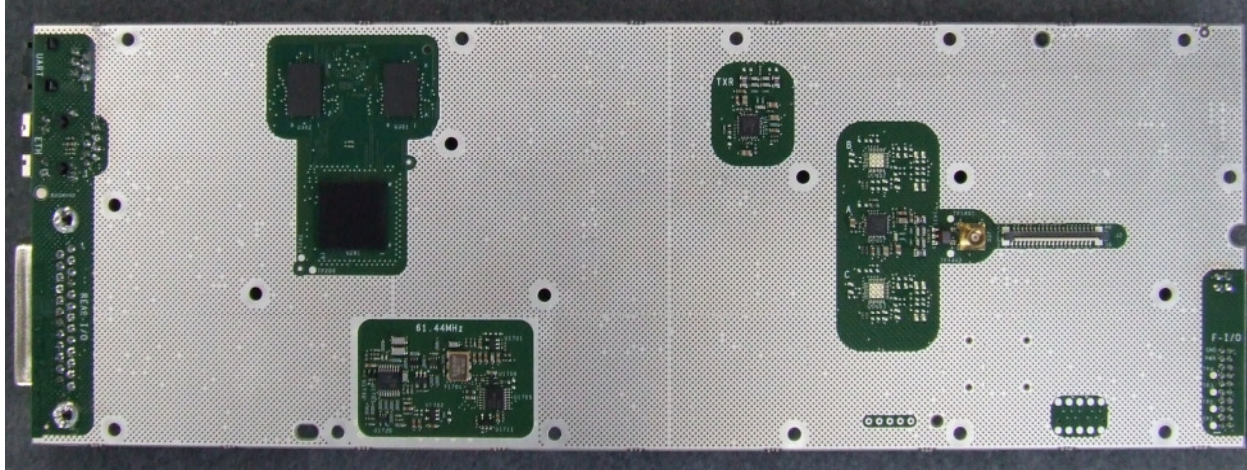
Photograph 09: Power Amplifier PCB – Bottom, cans off



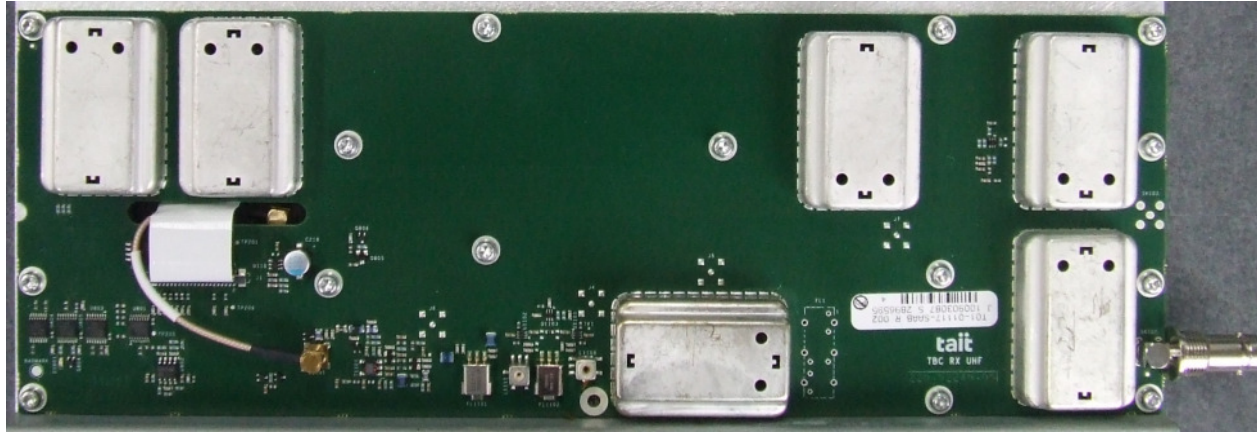
Photograph 10: Reciter Control Board (RCB) – Top



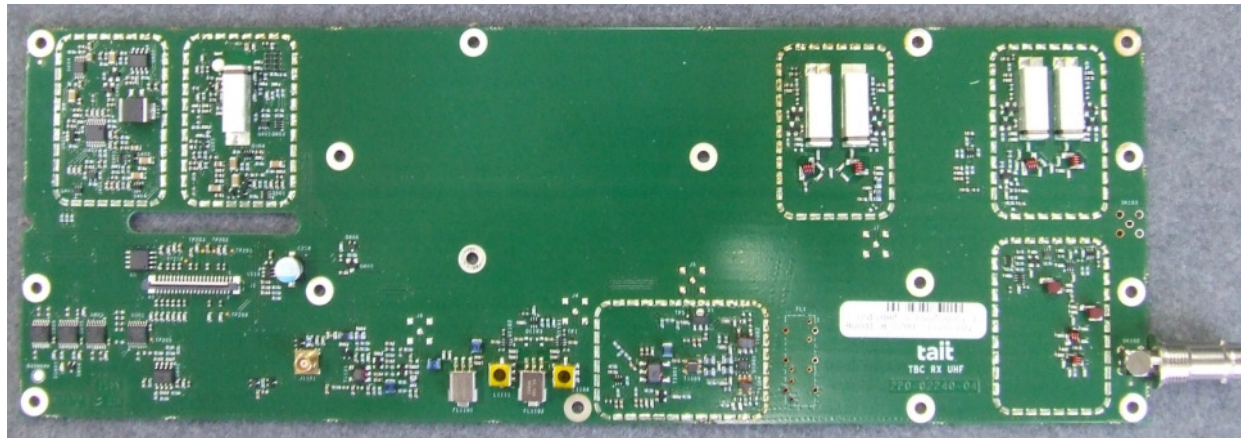
Photograph 11: Reciter Control Board (RCB) – Top (can off)



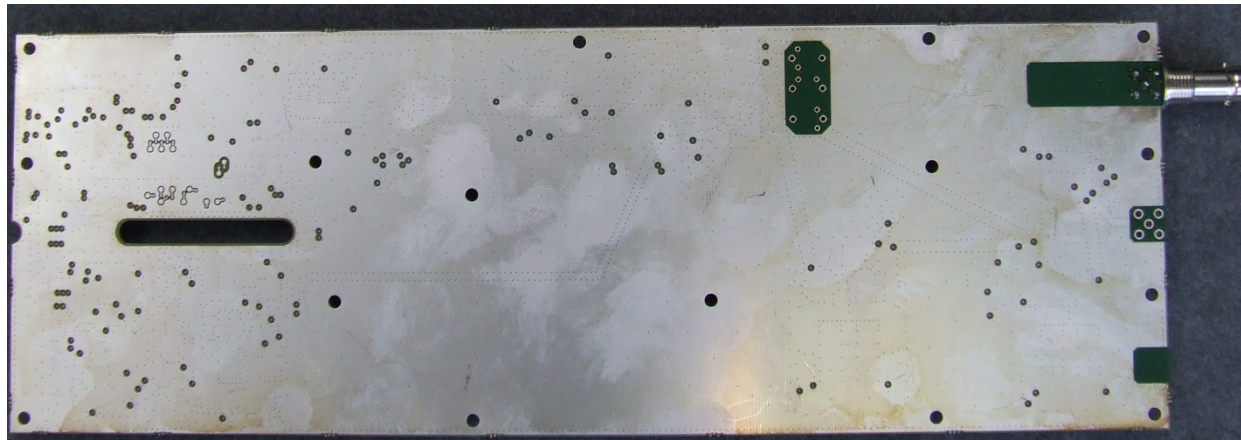
Photograph 12: Reciter Control Board (RCB) – Bottom



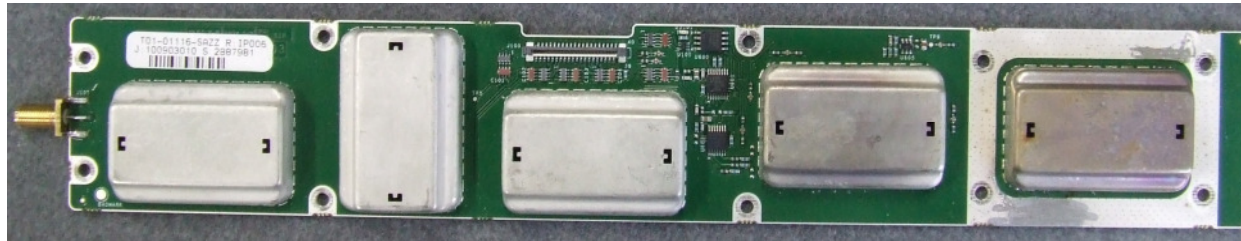
Photograph 13: Receiver Board (RXB) – Top



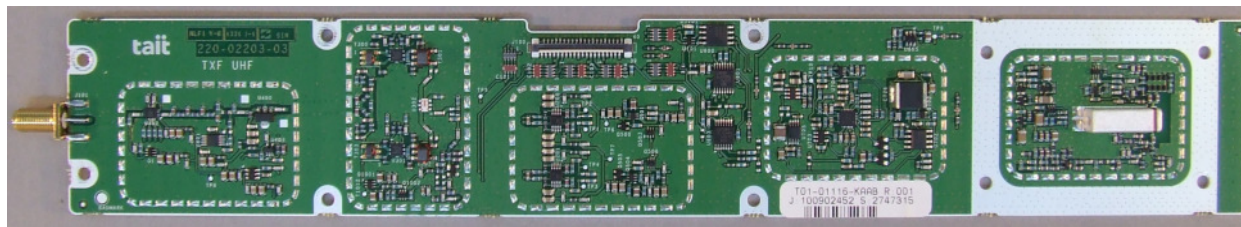
Photograph 14: Receiver Board (RXB) – Top (cans off)



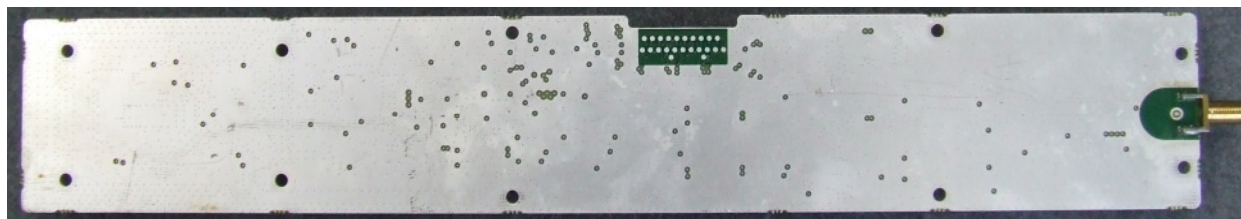
Photograph 15: Receiver Board (RXB) – Bottom



Photograph 16: Transmit Forward Power Board (TXF) – Top



Photograph 17: Transmit Forward Power Board (TXF) – Top (cans off)



Photograph 18: Transmit Forward Power Board (TXF) – Bottom