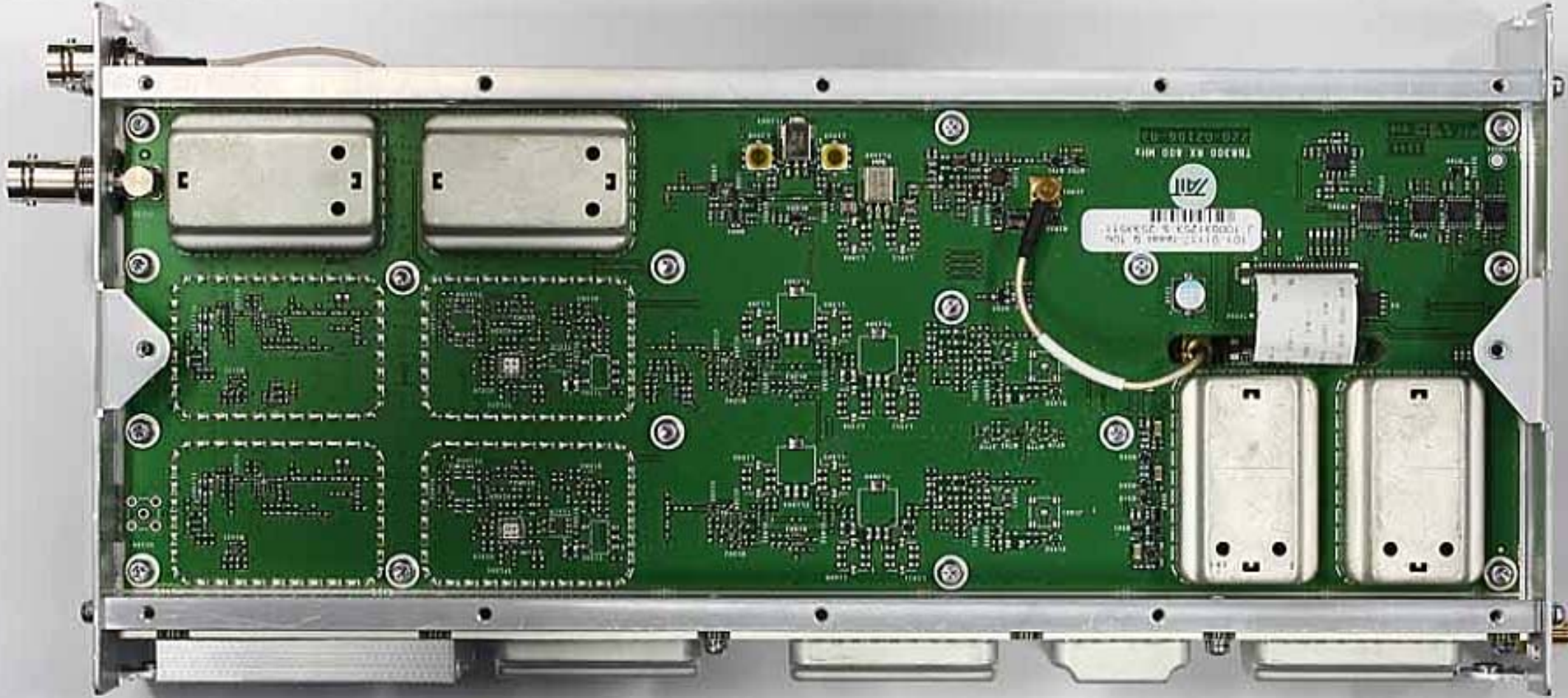


Teltest Report 3486 (May 2013)
Tait TBCK4D Base Station
FCC ID: CASTBCK4D
IC: 737A-TBCK4D



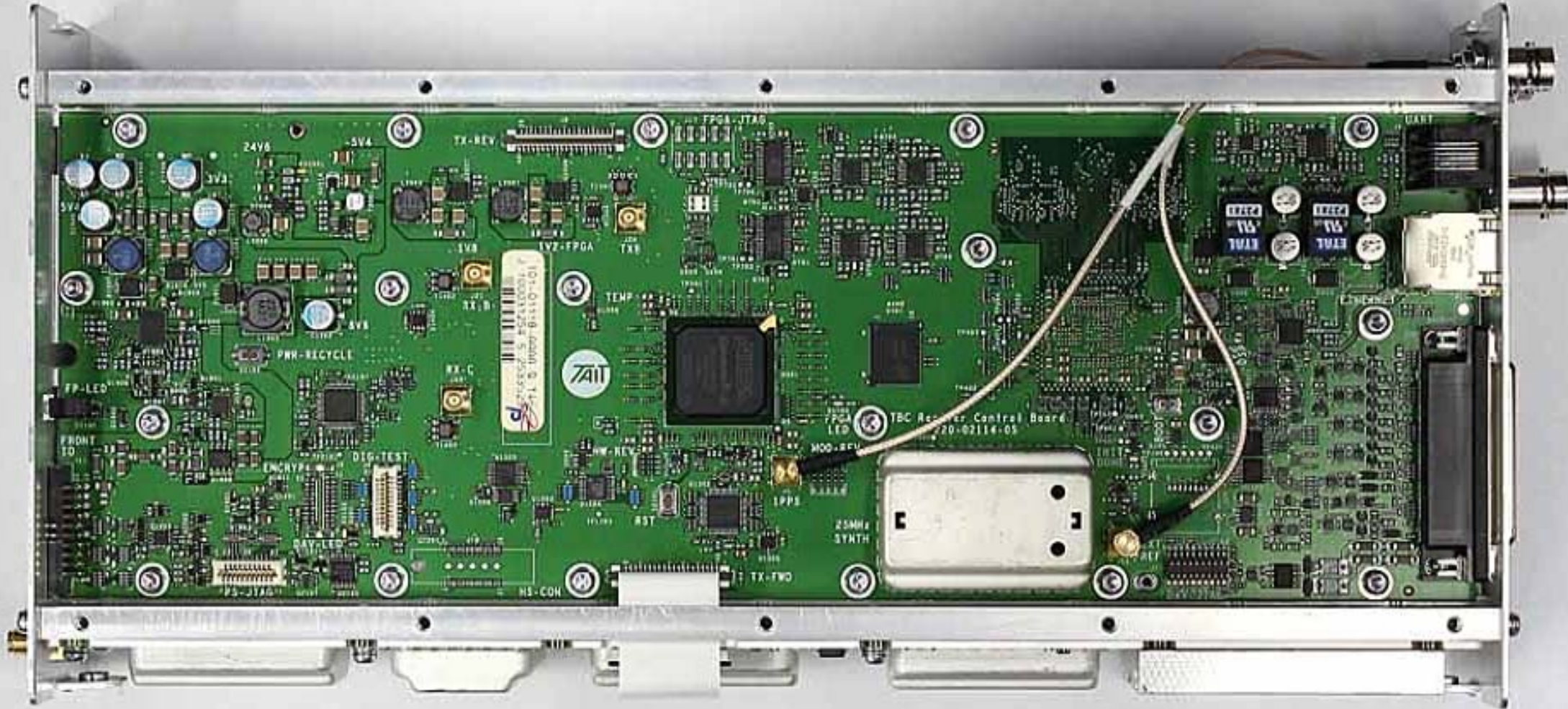
Internal - Reciter - Bottom

Teltest Report 3486 (May 2013)
Tait TBCK4D Base Station
FCC ID: CASTBCK4D
IC: 737A-TBCK4D



Internal - Reciter - Left

Teltest Report 3486 (May 2013) - Tait TBCK4D Base Station
FCC ID: CASTBCK4D - IC: 737A-TBCK4D



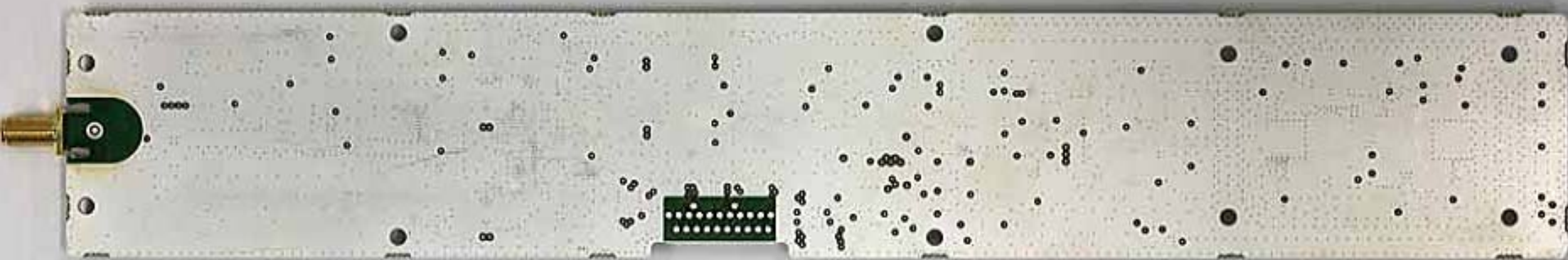
Internal - Reciter - Right

Teltest Report 3486 (May 2013)
Tait TBCK4D Base Station
FCC ID: CASTBCK4D
IC: 737A-TBCK4D



Internal - Reciter - Top

Teltest Report 3486 (May 2013)
Tait TBCK4D Base Station
FCC ID: CASTBCK4D
IC: 737A-TBCK4D



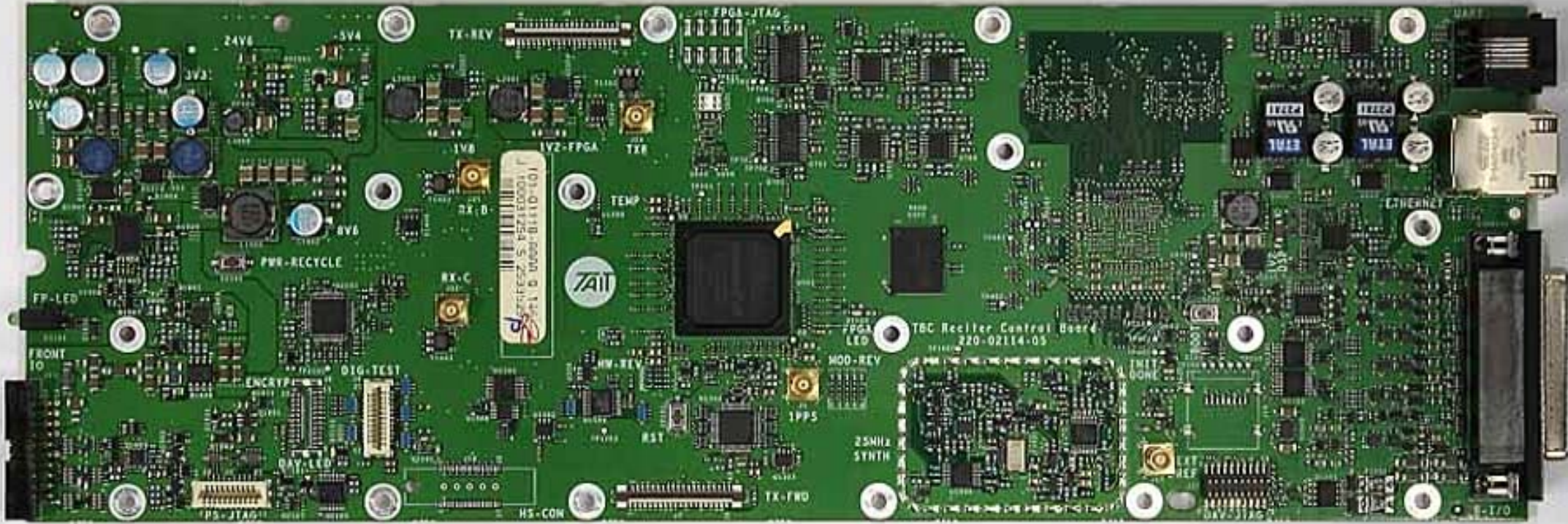
Internal - Reciter - Transmitter Forward Path Board - Bottomside

Teltest Report 3486 (May 2013)
Tait TBCK4D Base Station
FCC ID: CASTBCK4D
IC: 737A-TBCK4D



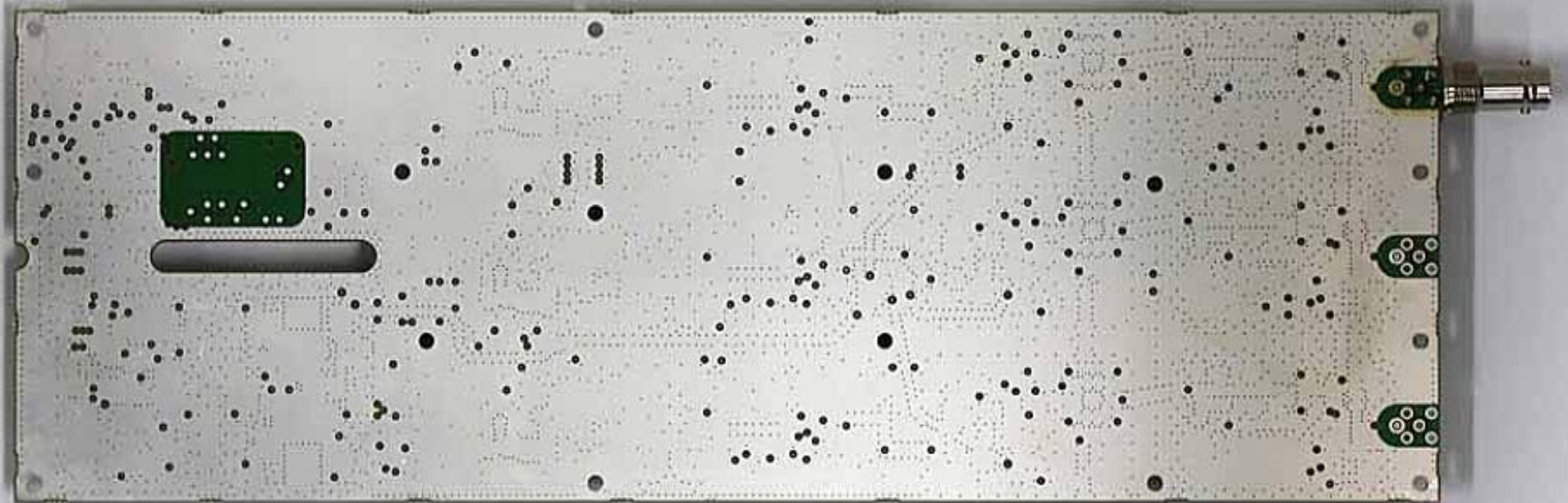
Internal - Reciter - Transmitter Forward Path Board - Topside (No Cans)

Teltest Report 3486 (May 2013)
Tait TBCK4D Base Station
FCC ID: CASTBCK4D
IC: 737A-TBCK4D



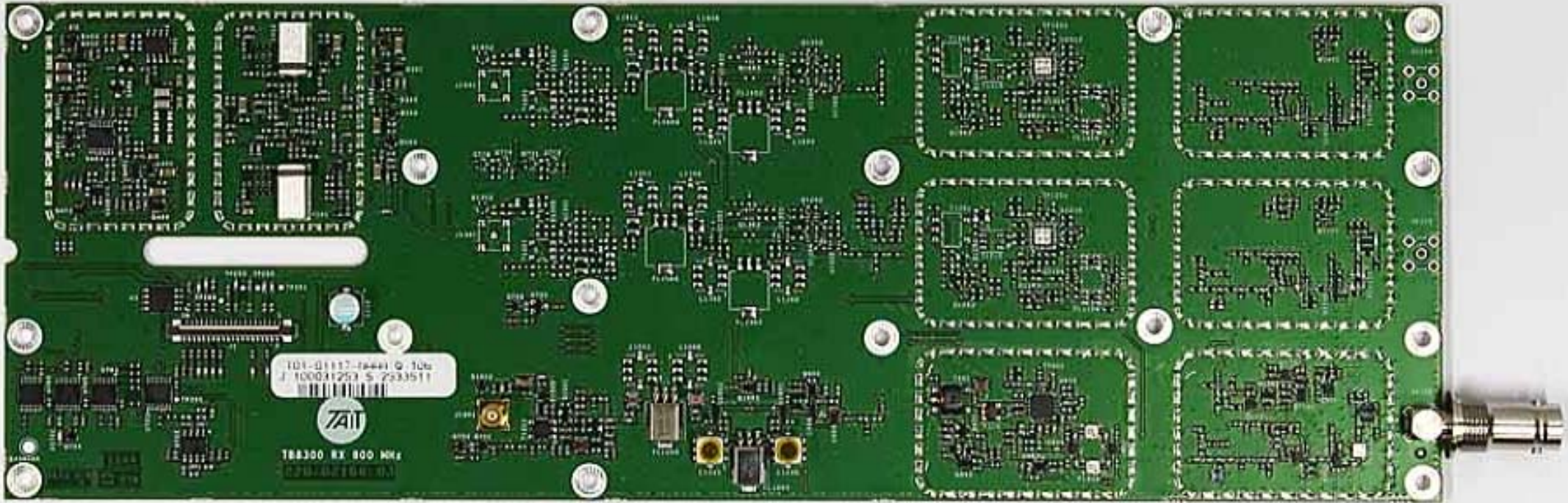
Internal - Reciter - Control Board - Topside

Teltest Report 3486 (May 2013)
Tait TBCK4D Base Station
FCC ID: CASTBCK4D
IC: 737A-TBCK4D



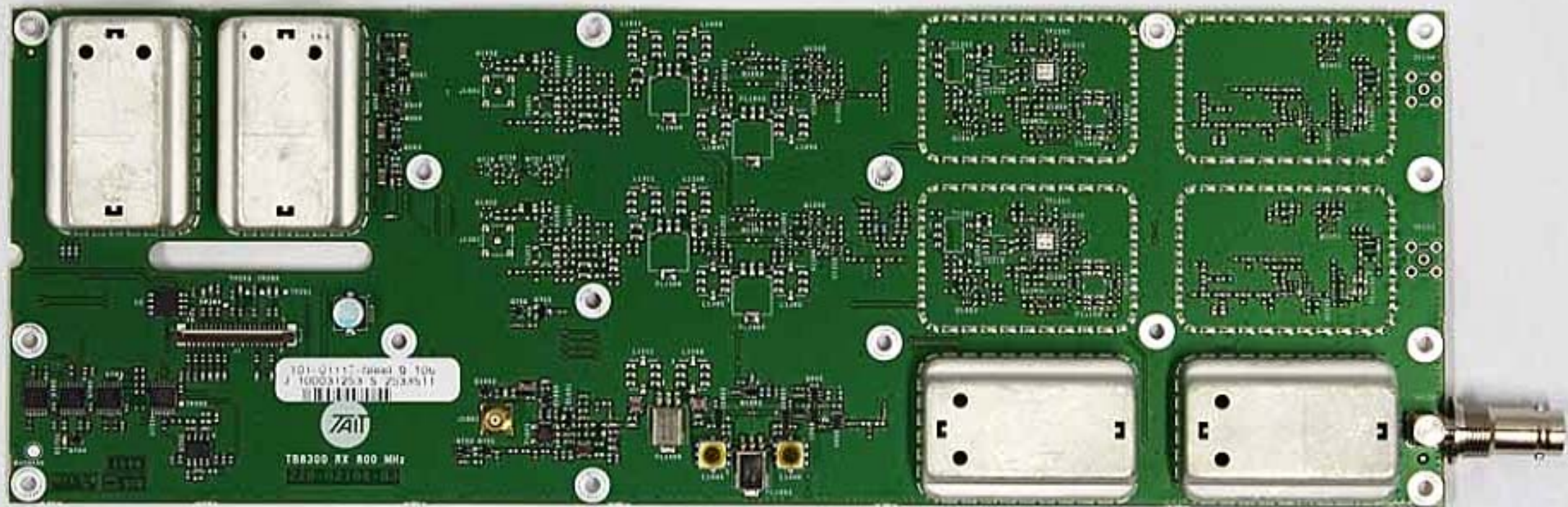
Internal - Reciter - Receiver Board - Underside

Teltest Report 3486 (May 2013)
Tait TBCK4D Base Station
FCC ID: CASTBCK4D
IC: 737A-TBCK4D



Internal - Reciter - Receiver Board - Topside (No Cans)

Teltest Report 3486 (May 2013)
Tait TBCK4D Base Station
FCC ID: CASTBCK4D
IC: 737A-TBCK4D



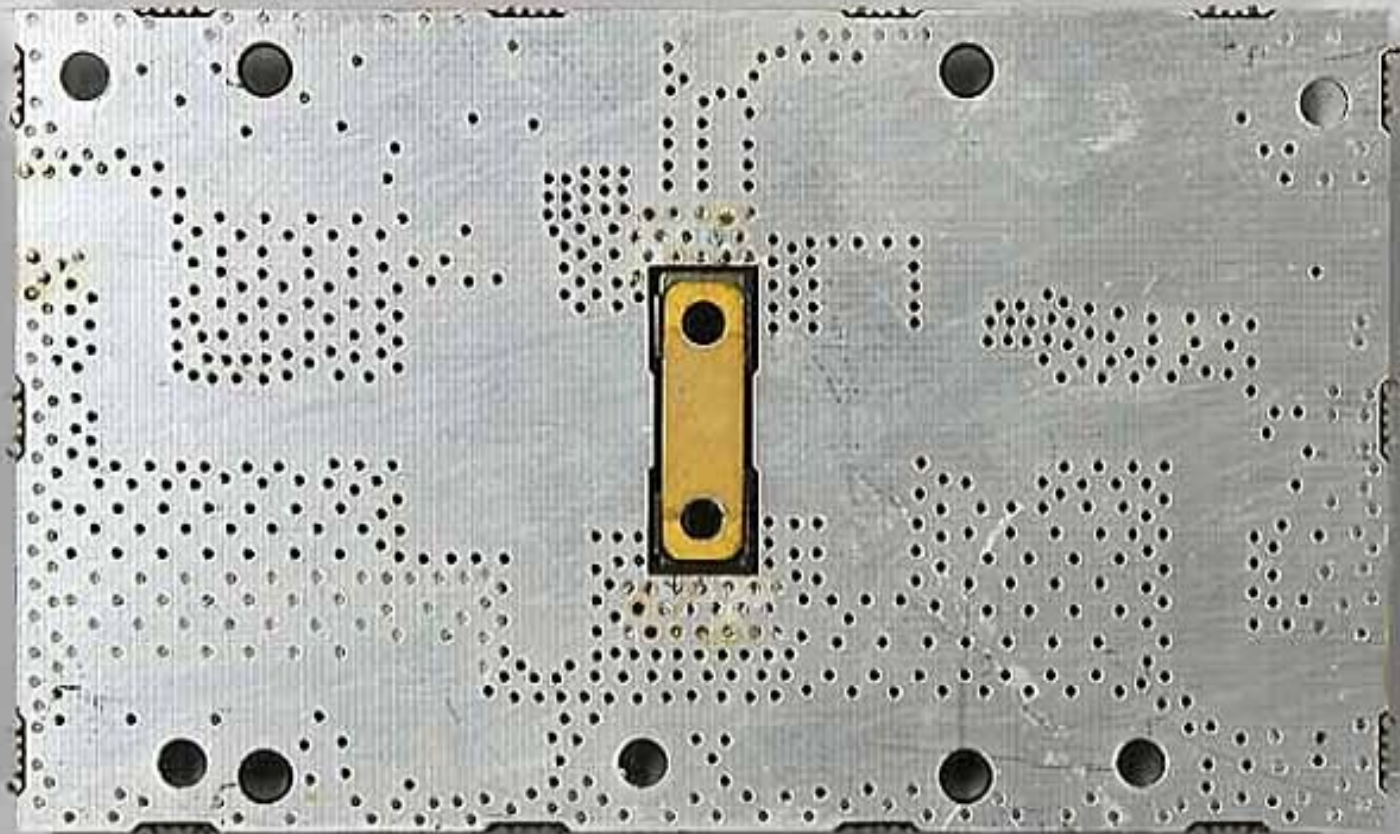
Internal - Reciter - Receiver Board - Topside

Teletest Report 3486 (May 2013)

Tait TBCK4D Base Station

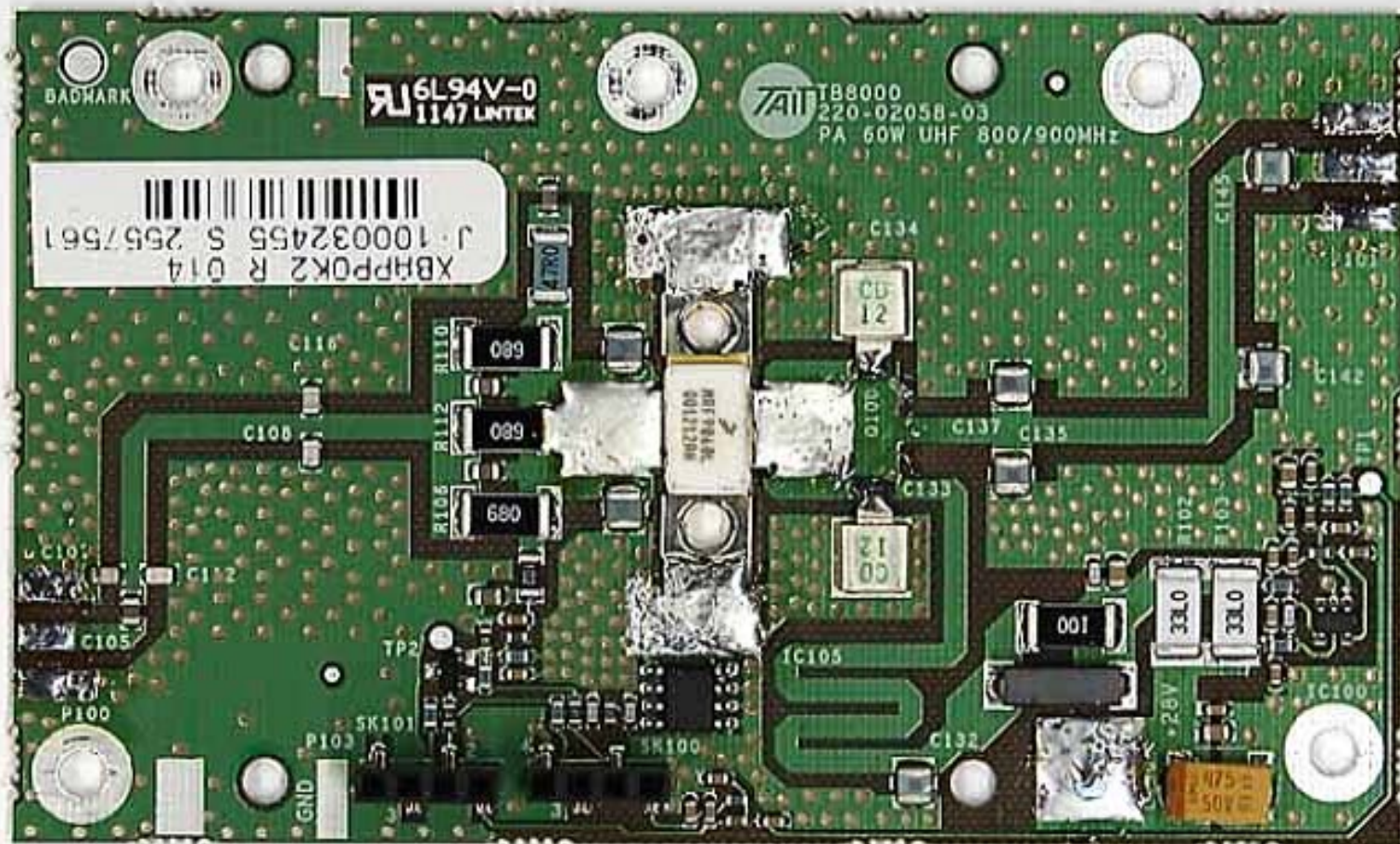
FCC ID: CASTBCK4D

IC: 737A-TBCK4D



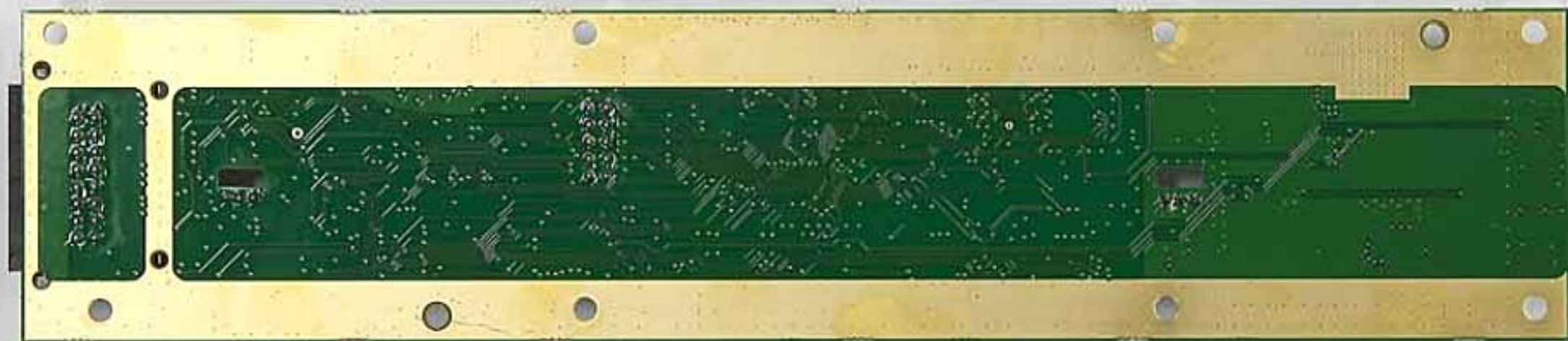
TBCK4D - Internal - Power Amp - 60W Power Amp Board - Bottom

Teletest Report 3486 (May 2013) - Tait TBCK4D Base Station
FCC ID: CASTBCK4D - IC: 737A-TBCK4D



TBCK4D - Internal - Power Amp - 60W Power Amp Board - Top

Teletest Report 3486 (May 2013)
Tait TBCK4D Base Station
FCC ID: CASTBCK4D
IC: 737A-TBCK4D



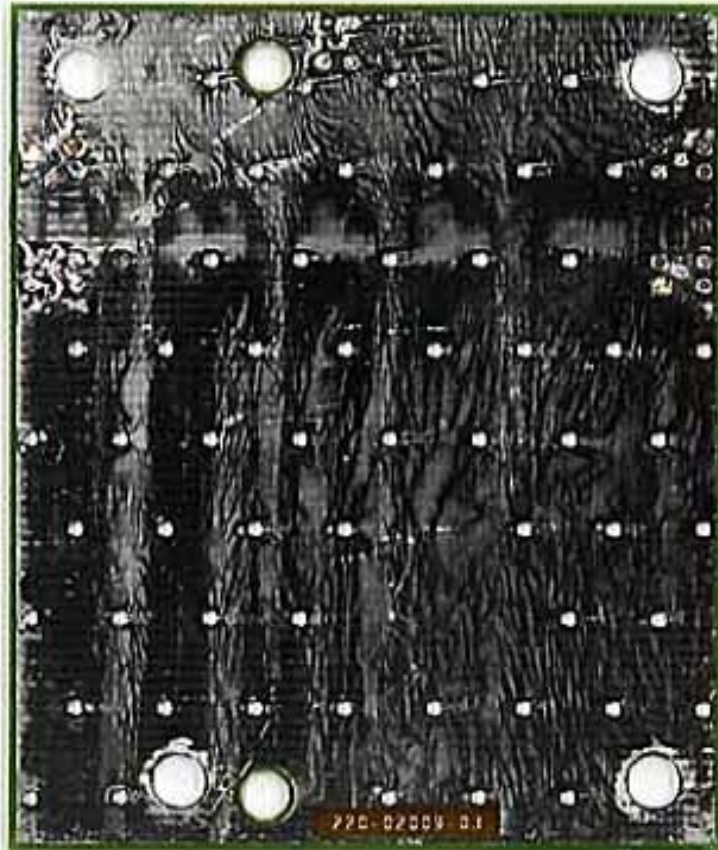
TBCK4D - Internal - Power Amp - Control Board - Bottom

Teletest Report 3486 (May 2013)
Tait TBCK4D Base Station
FCC ID: CASTBCK4D
IC: 737A-TBCK4D



TBCK4D - Internal - Power Amp - Control Board - Top

Teletest Report 3486 (May 2013)
Tait TBCK4D Base Station
FCC ID: CASTBCK4D
IC: 737A-TBCK4D



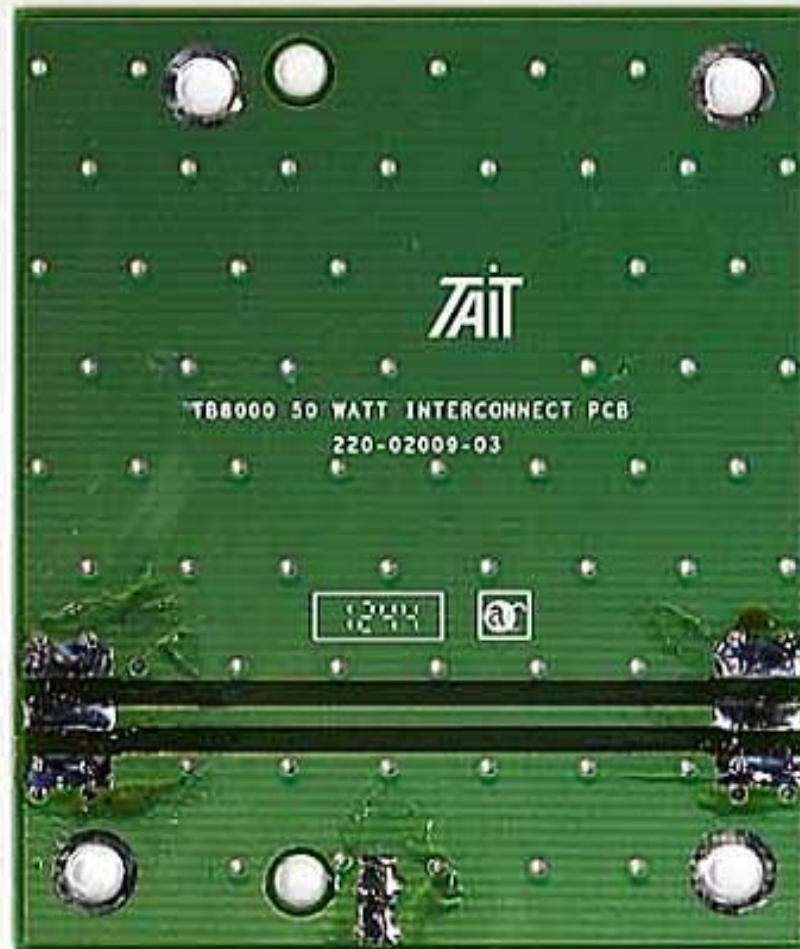
TBCK4D - Internal - Power Amp - Interconnect Board - Bottom

Teletest Report 3486 (May 2013)

Tait TBCK4D Base Station

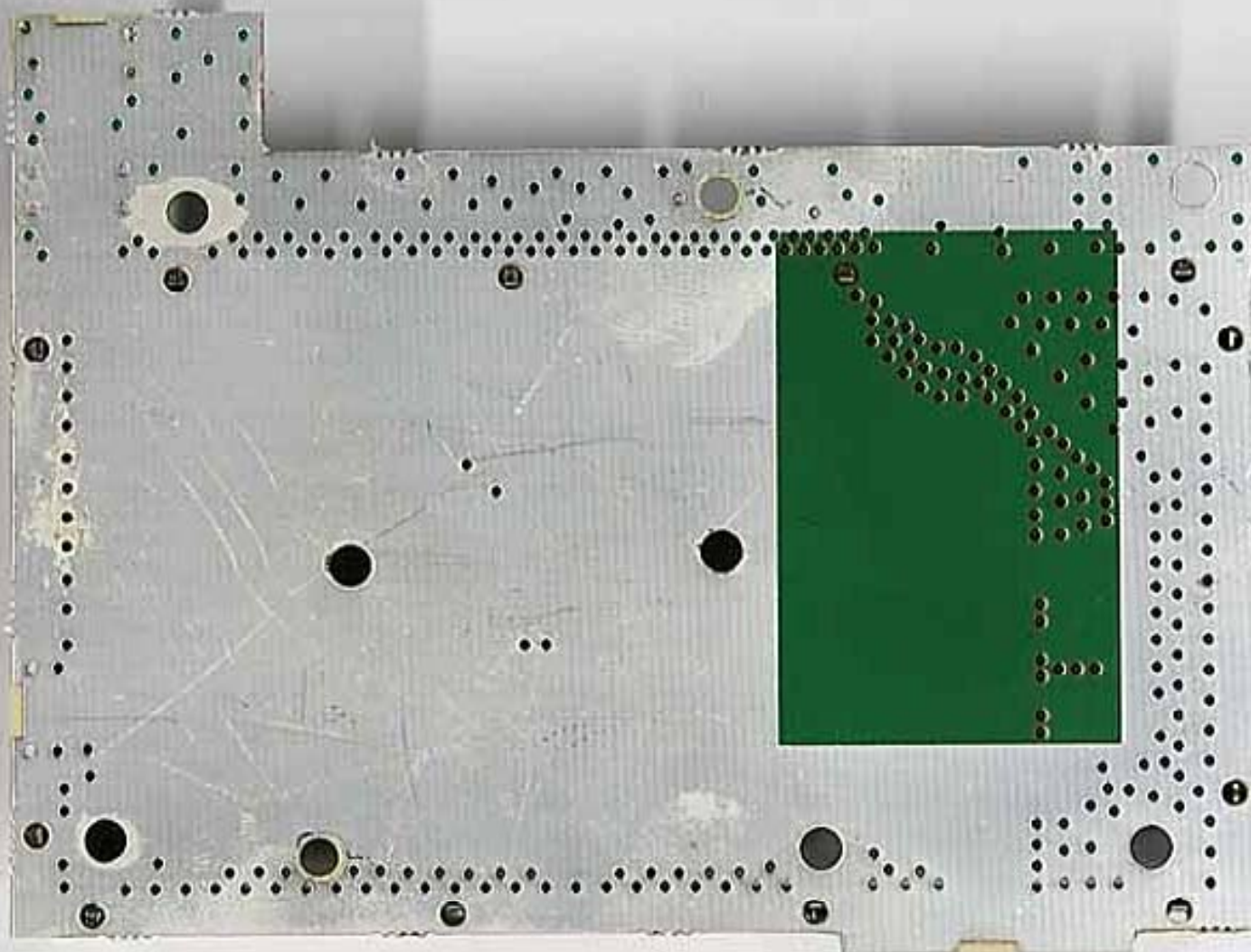
FCC ID: CASTBCK4D

IC: 737A-TBCK4D



TBCK4D - Internal - Power Amp - Interconnect Board - Top

Teletest Report 3486 (May 2013)
Tait TBCK4D Base Station
FCC ID: CASTBCK4D
IC: 737A-TBCK4D



TBCK4D - Internal - Power Amp - LPF - Bottom

Teletest Report 3486 (May 2013)
Tait TBCK4D Base Station
FCC ID: CASTBCK4D
IC: 737A-TBCK4D



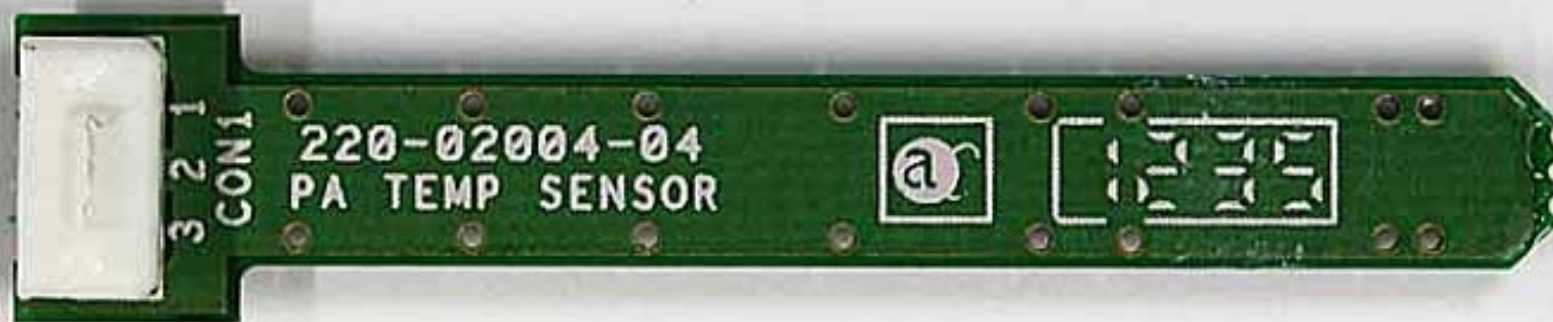
TBCK4D - Internal - Power Amp - LPF - Top - Cans Removed

Teletest Report 3486 (May 2013)

Tait TBCK4D Base Station

FCC ID: CASTBCK4D

IC: 737A-TBCK4D



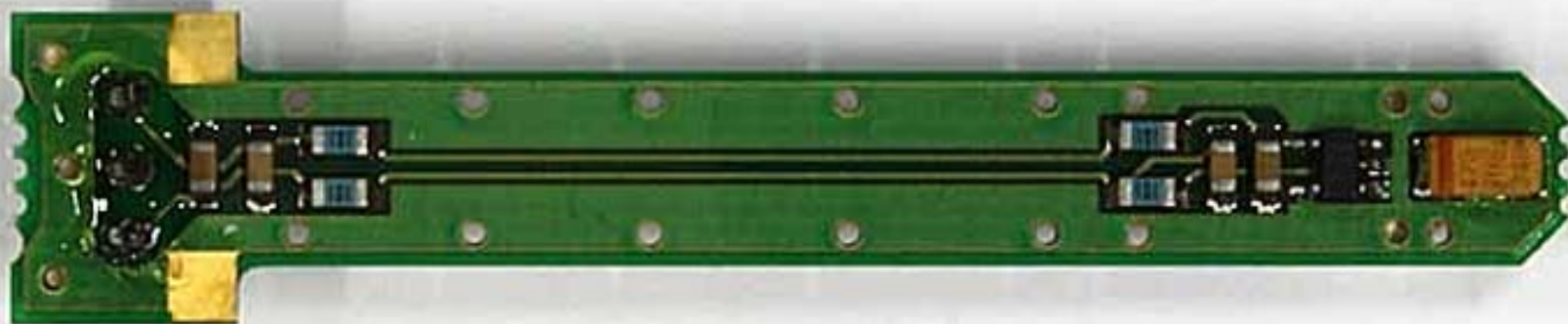
TBCK4D - Internal - Pwr Amp - Temp Sens Bd - Bottom

Teletest Report 3486 (May 2013)

Tait TBCK4D Base Station

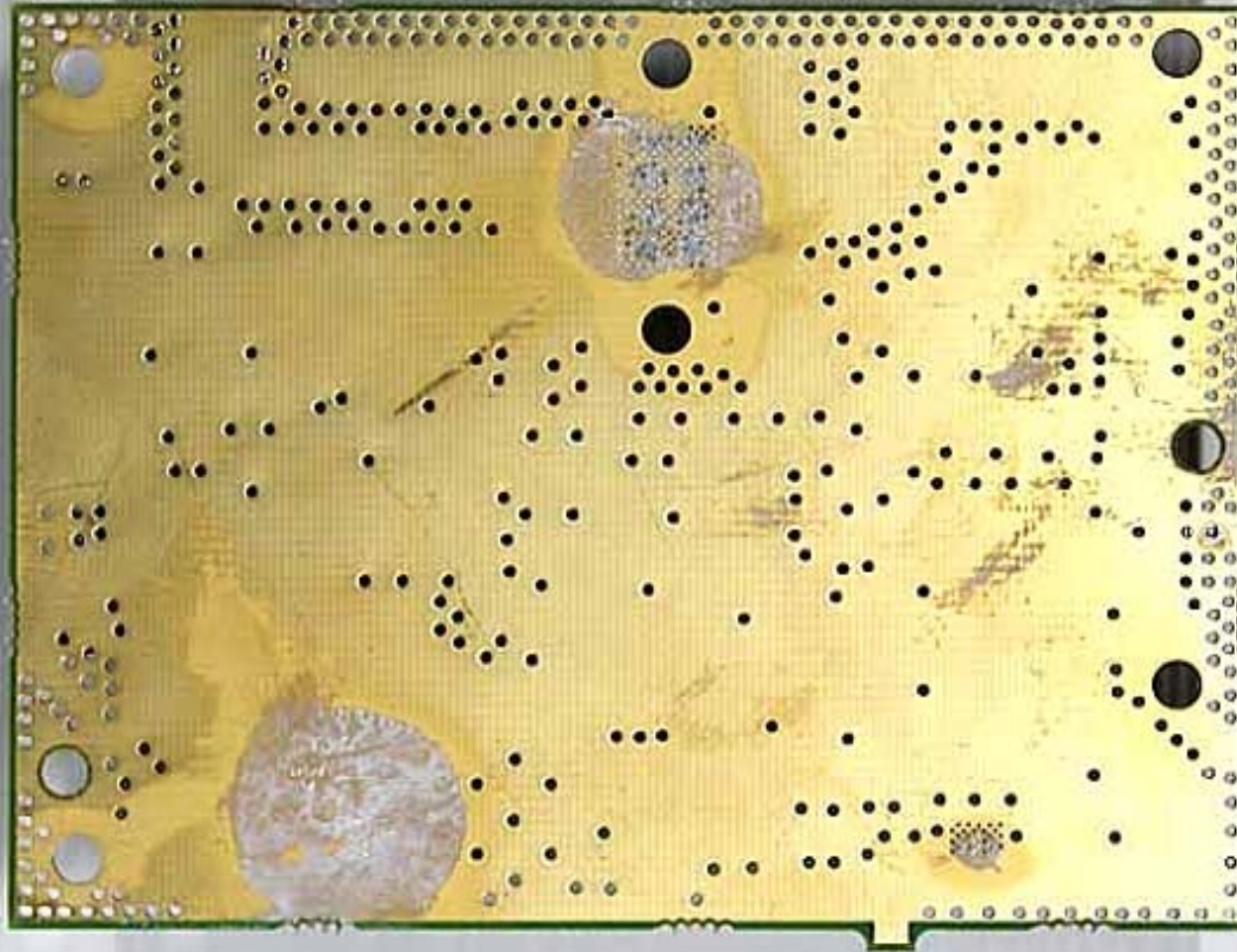
FCC ID: CASTBCK4D

IC: 737A-TBCK4D



TBCK4D - Internal - Power Amp - Temp Sens Bd - Top

Teletest Report 3486 (May 2013)
Tait TBCK4D Base Station
FCC ID: CASTBCK4D
IC: 737A-TBCK4D



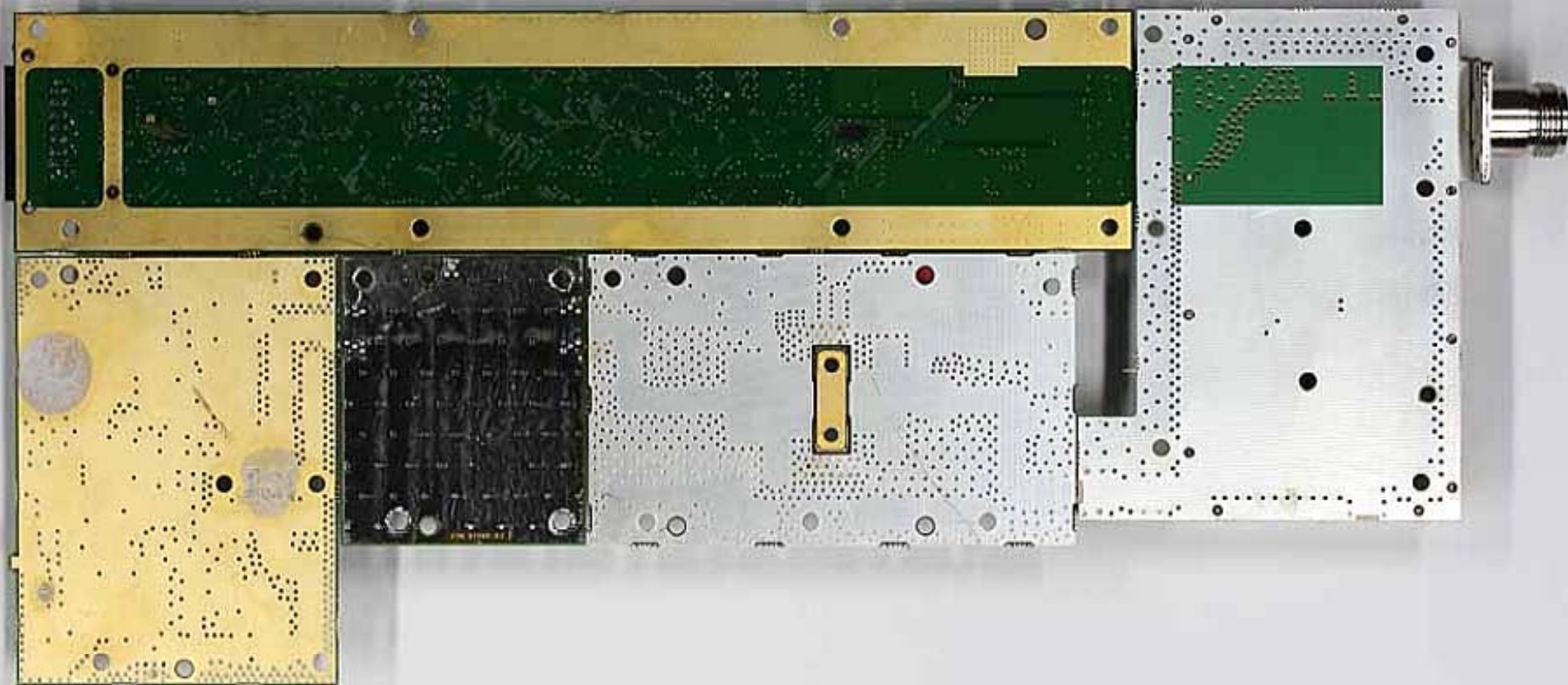
TBCK4D - Internal - Power Amp - 6W Driver Board - Bottom

Teletest Report 3486 (May 2013) - Tait TBCK4D Base Station
FCC ID: CASTBCK4D
IC: 737A-TBCK4D



TBCK4D - Internal - Power Amp - 6W Driver Board - Top

Teletest Report 3486 (May 2013)
Tait TBCK4D Base Station
FCC ID: CASTBCK4D
IC: 737A-TBCK4D



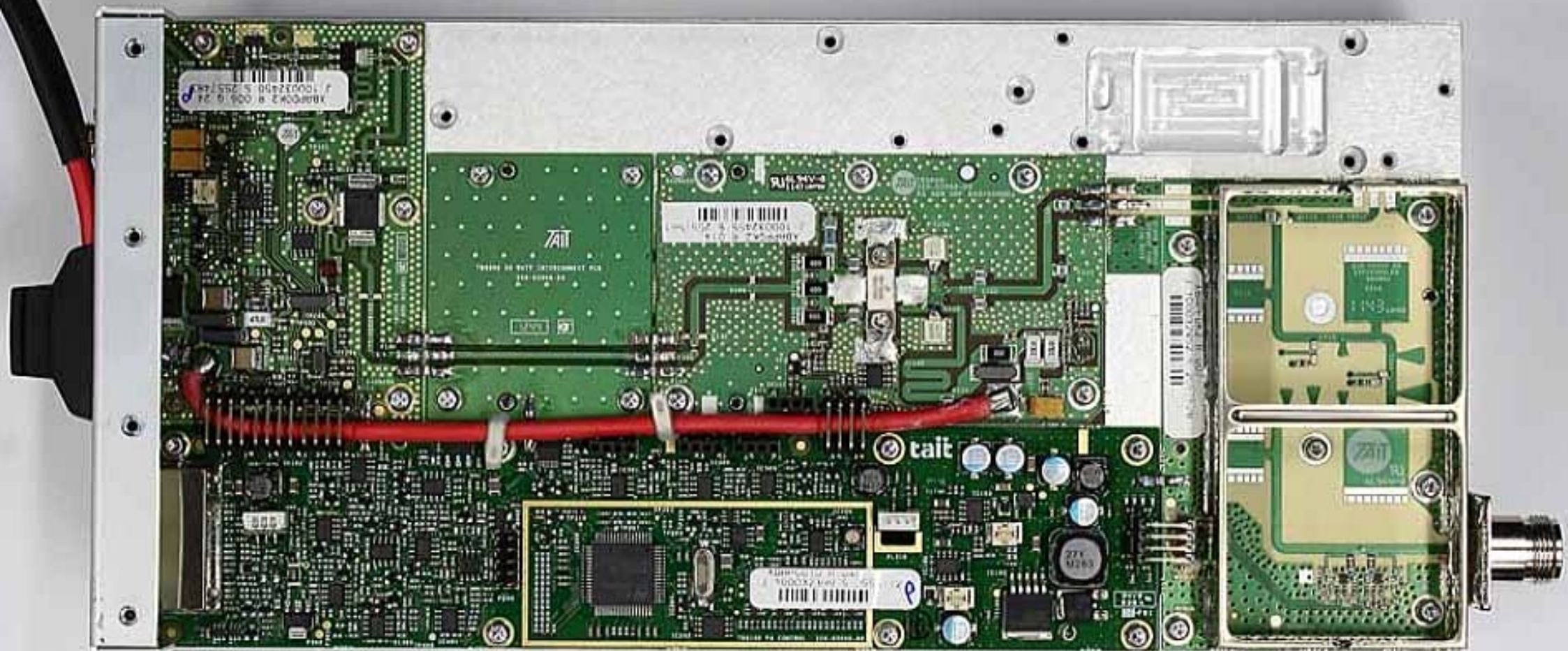
TBCK4D - Internal - Power Amplifier Boards - Bottom

Teletest Report 3486 (May 2013) - Tait TBCK4D Base Station
FCC ID: CASTBCK4D
IC: 737A-TBCK4D



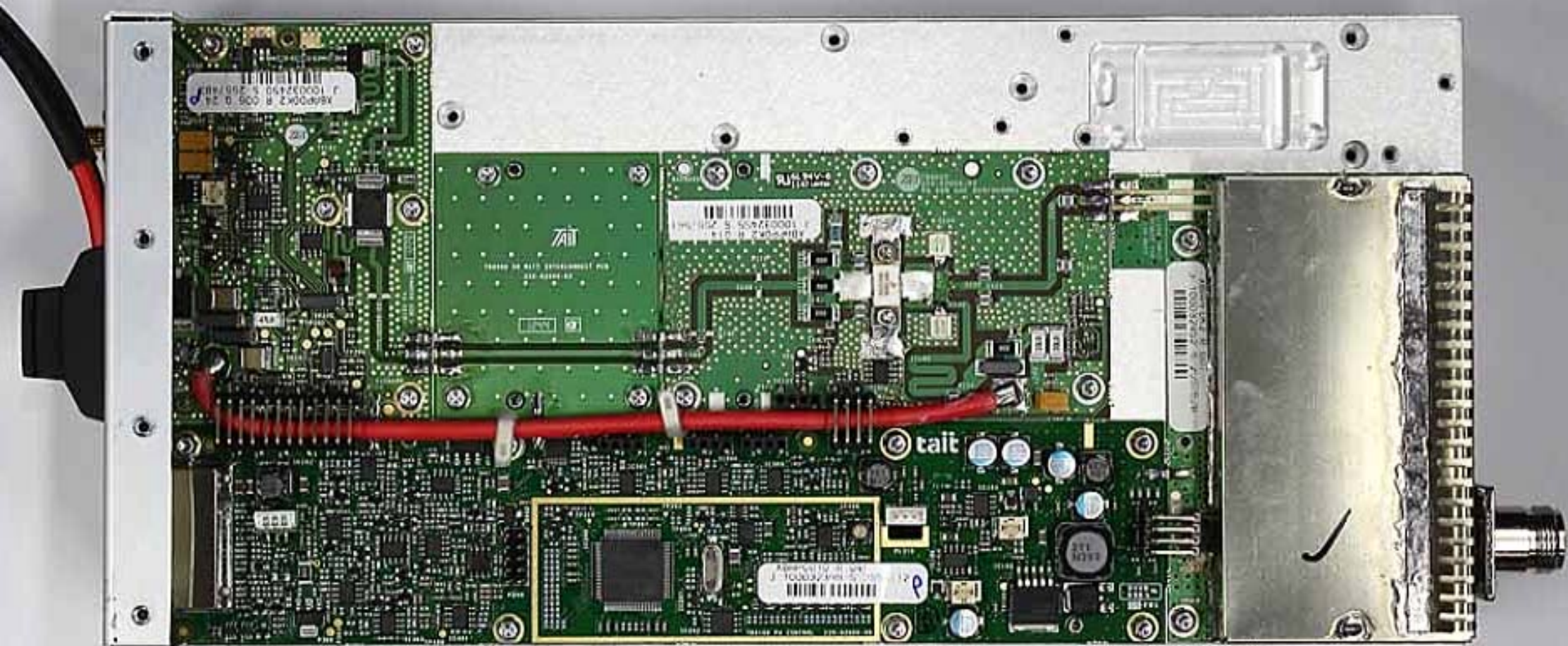
TBCK4D - Internal - Power Amplifier Boards - Top - Cans Removed

Teletest Report 3486 (May 2013)
Tait TBCK4D Base Station
FCC ID: CASTBCK4D
IC: 737A-TBCK4D



TBCK4D - Internal - Power Amplifier - Top - With Cans Removed

Teletest Report 3486 (May 2013)
Tait TBCK4D Base Station
FCC ID: CASTBCK4D
IC: 737A-TBCK4D



TBCK4D - Internal - Power Amplifier - Top