

Tait Limited

Internal Photographs Exhibit

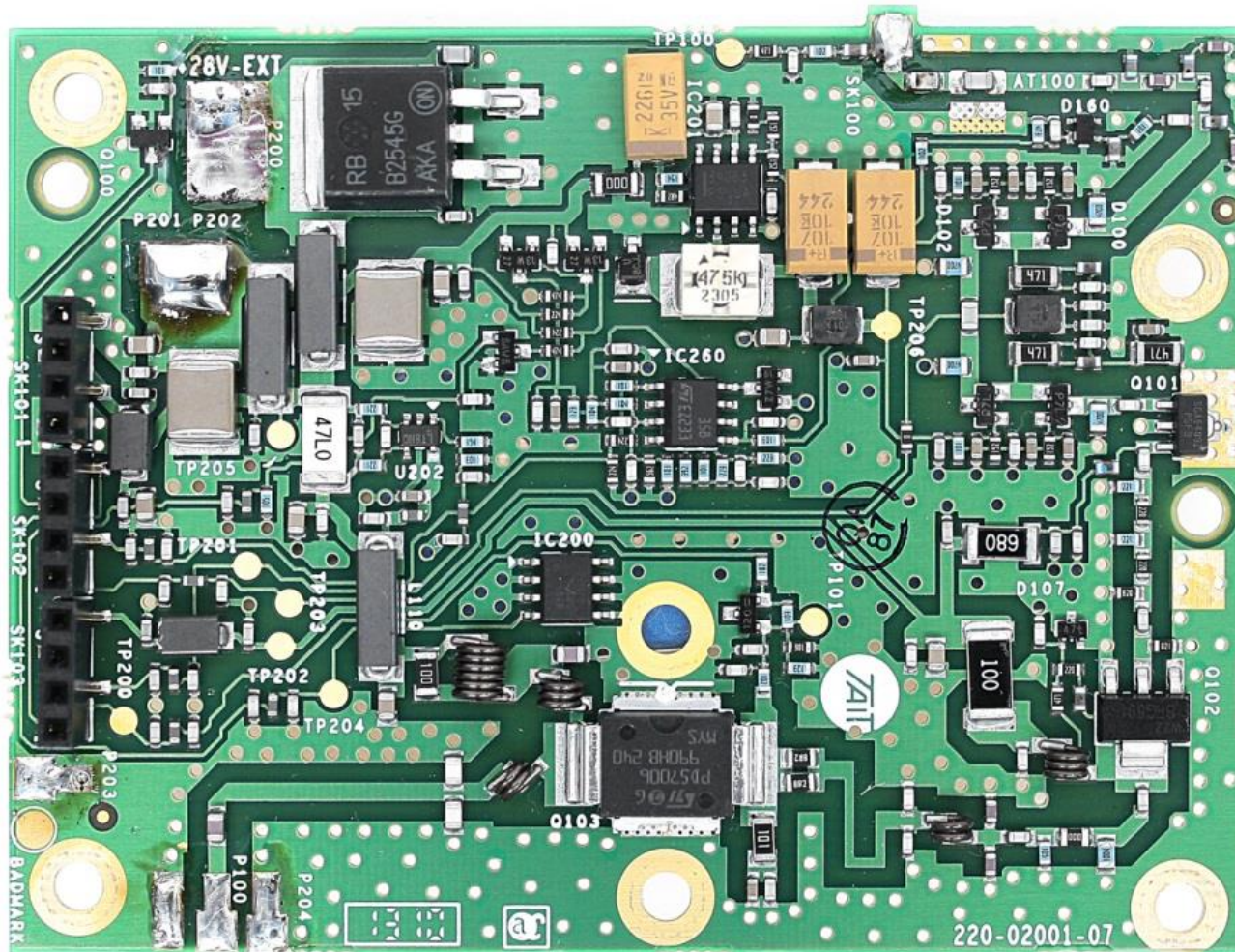
(November 2013)

Product: TB9315-H1H0-0000-A1AA-10 &
TB9315-H2H0-0000-A0AA-10

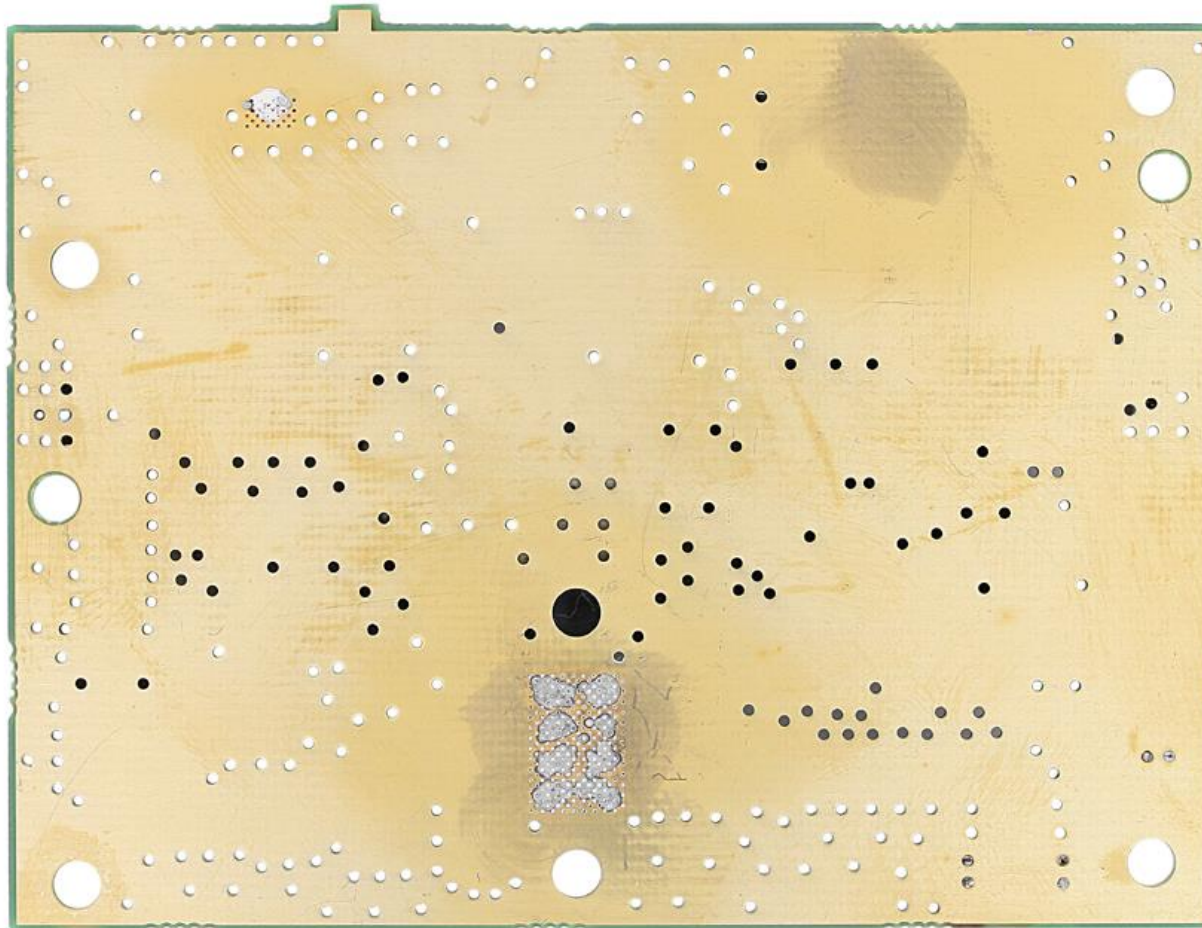
Type code: TBCH0D

FCC ID: CASTBCH0D

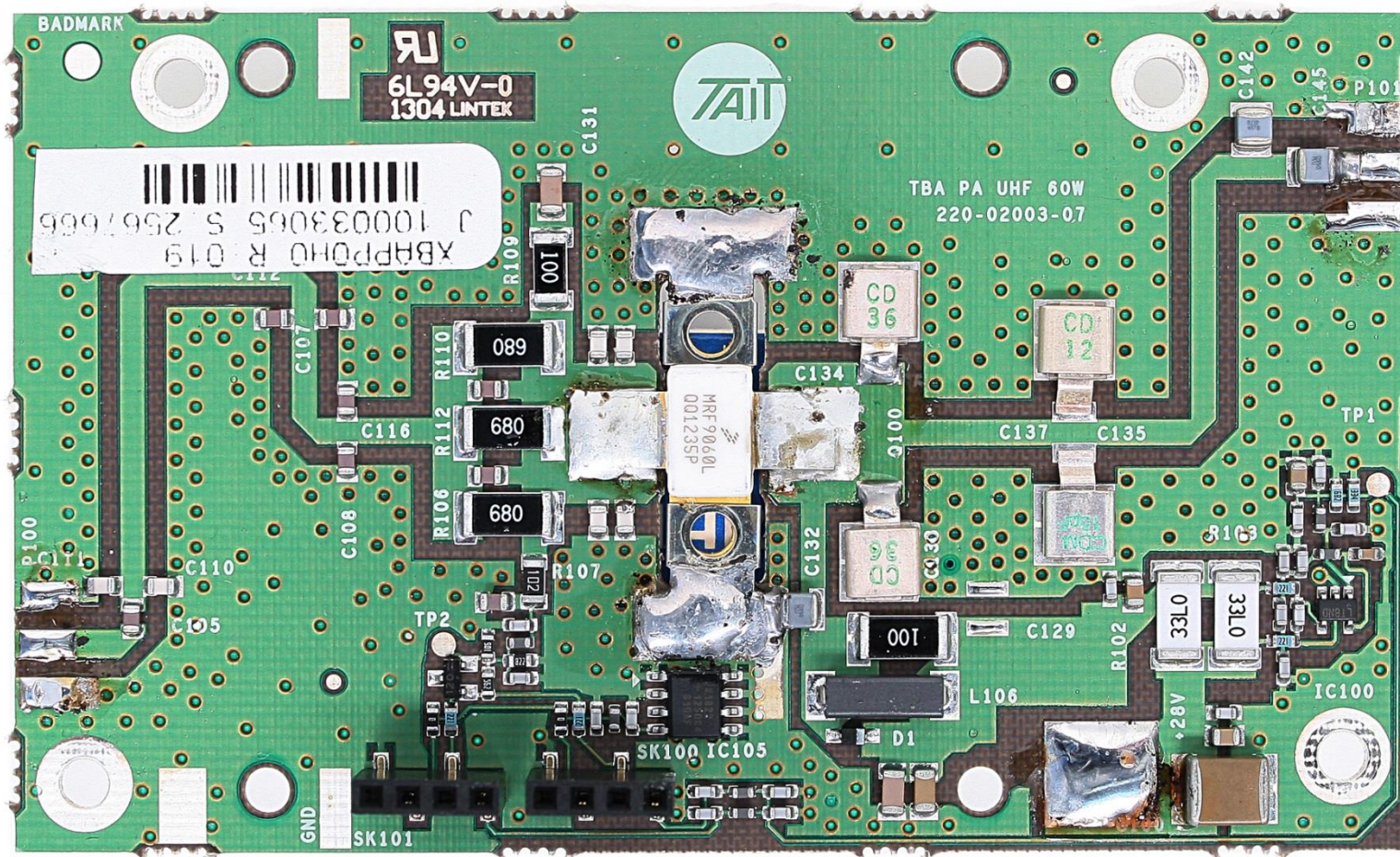
IC: 737A-TBCH0D



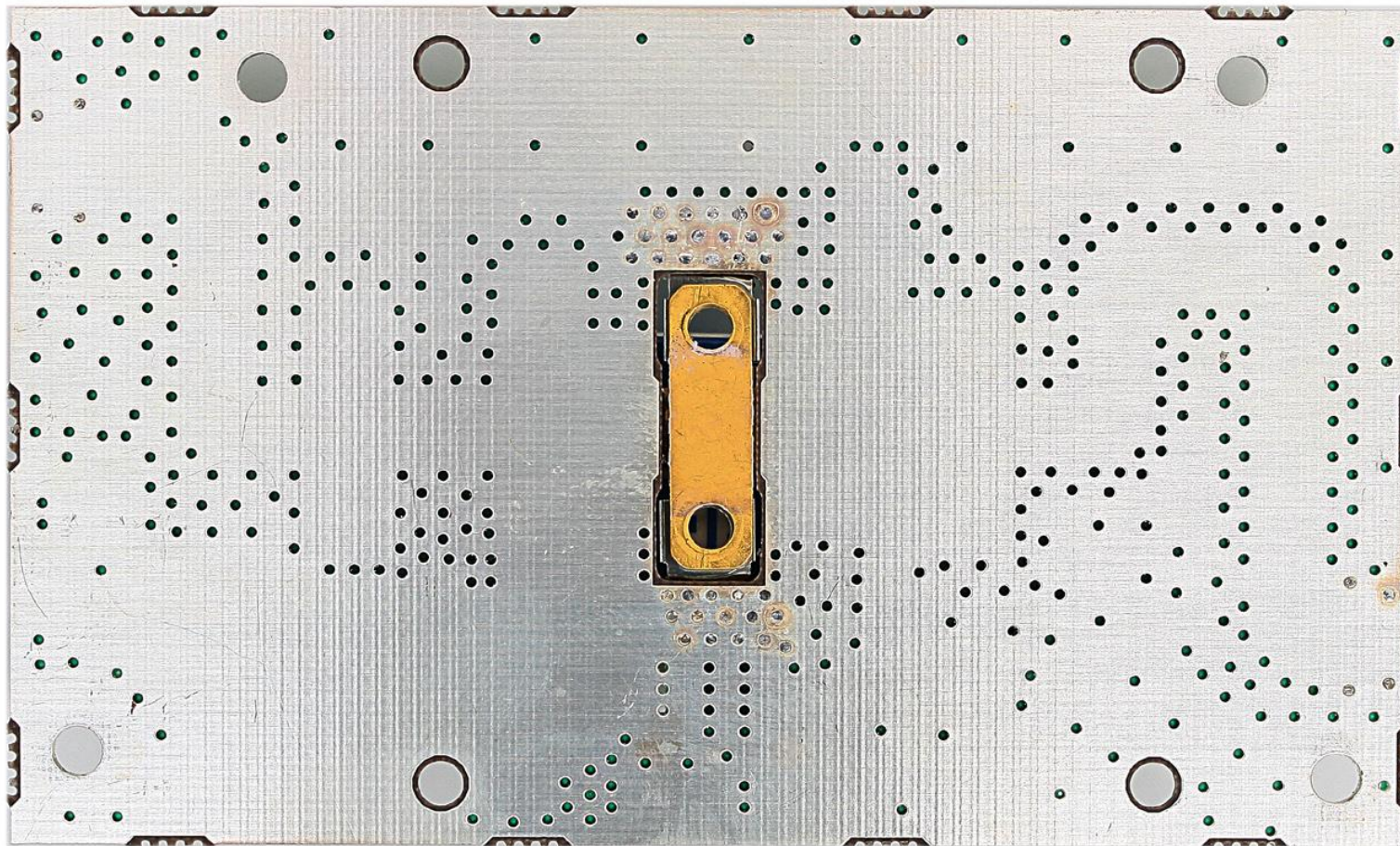
Photograph 02: 6W Driver PCB - Top



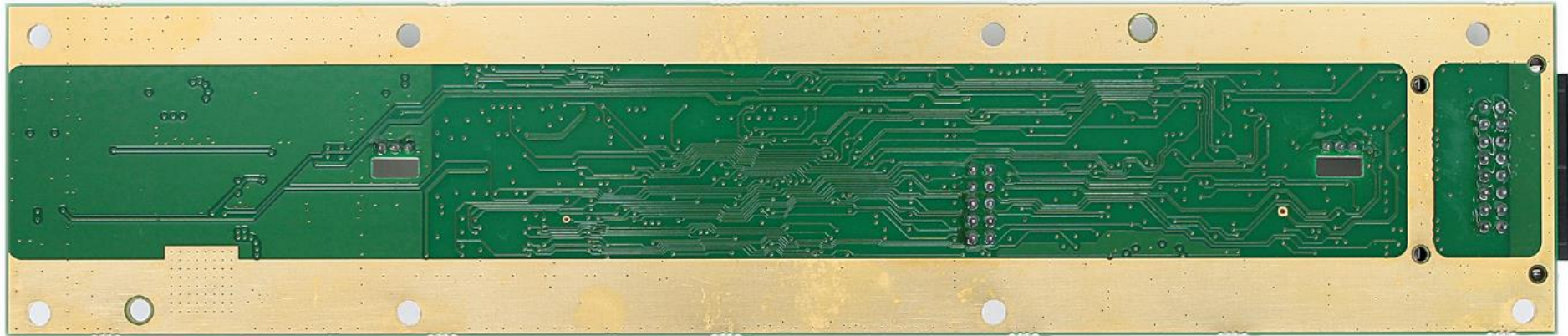
Photograph 03: 6W Driver PCB - Bottom



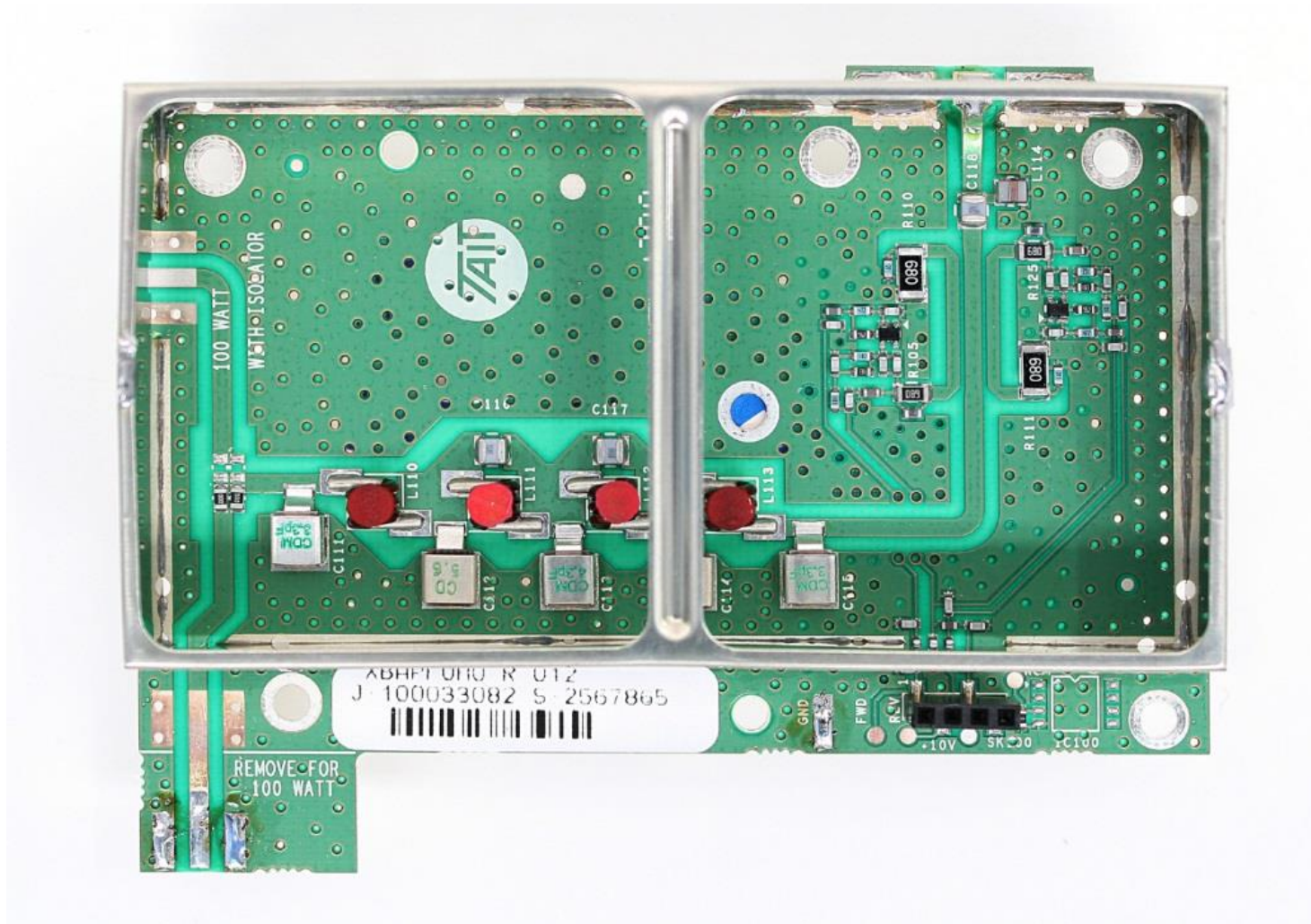
Photograph 04: 50W PA PCB - Top



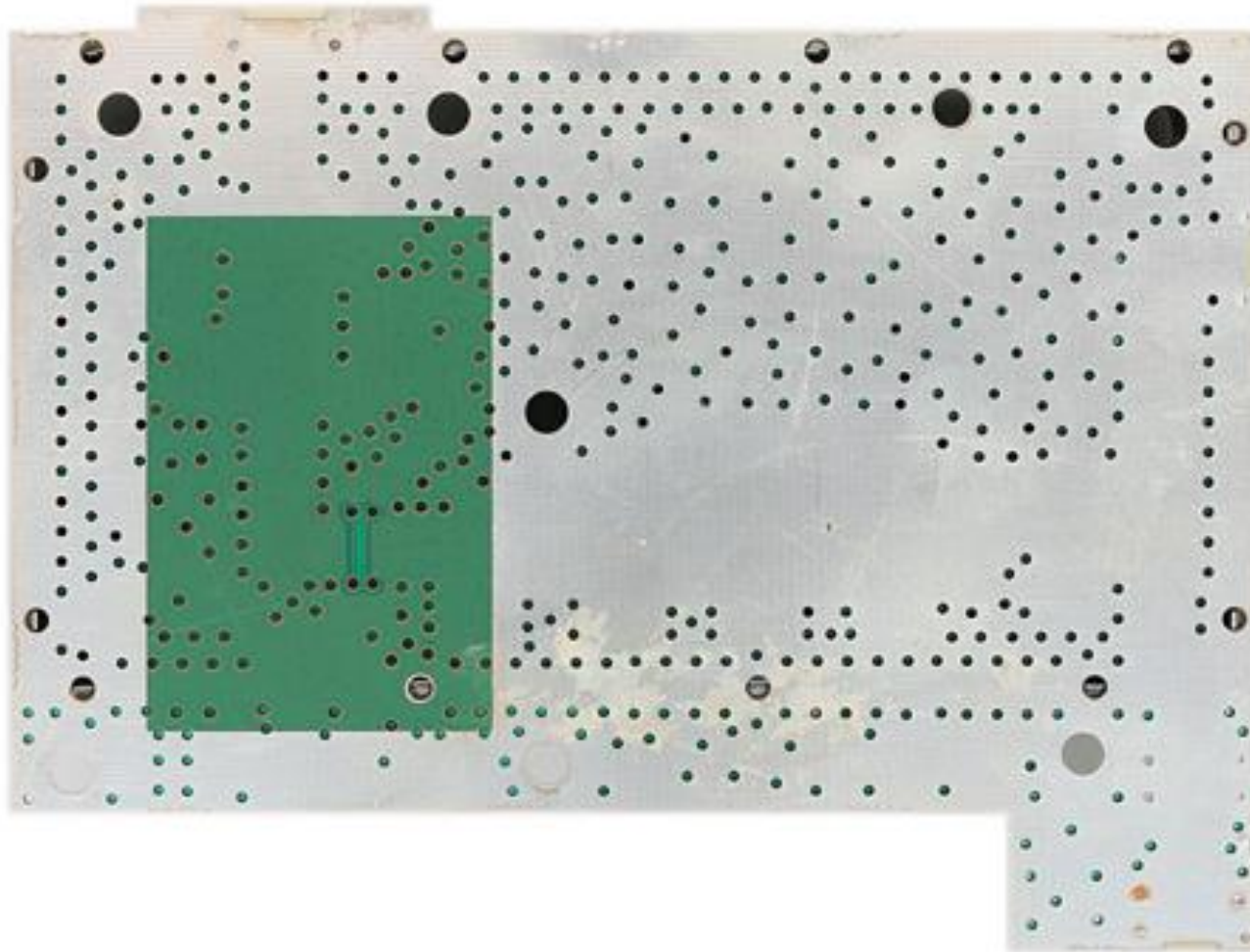
Photograph 05: 50W PA PCB - Bottom



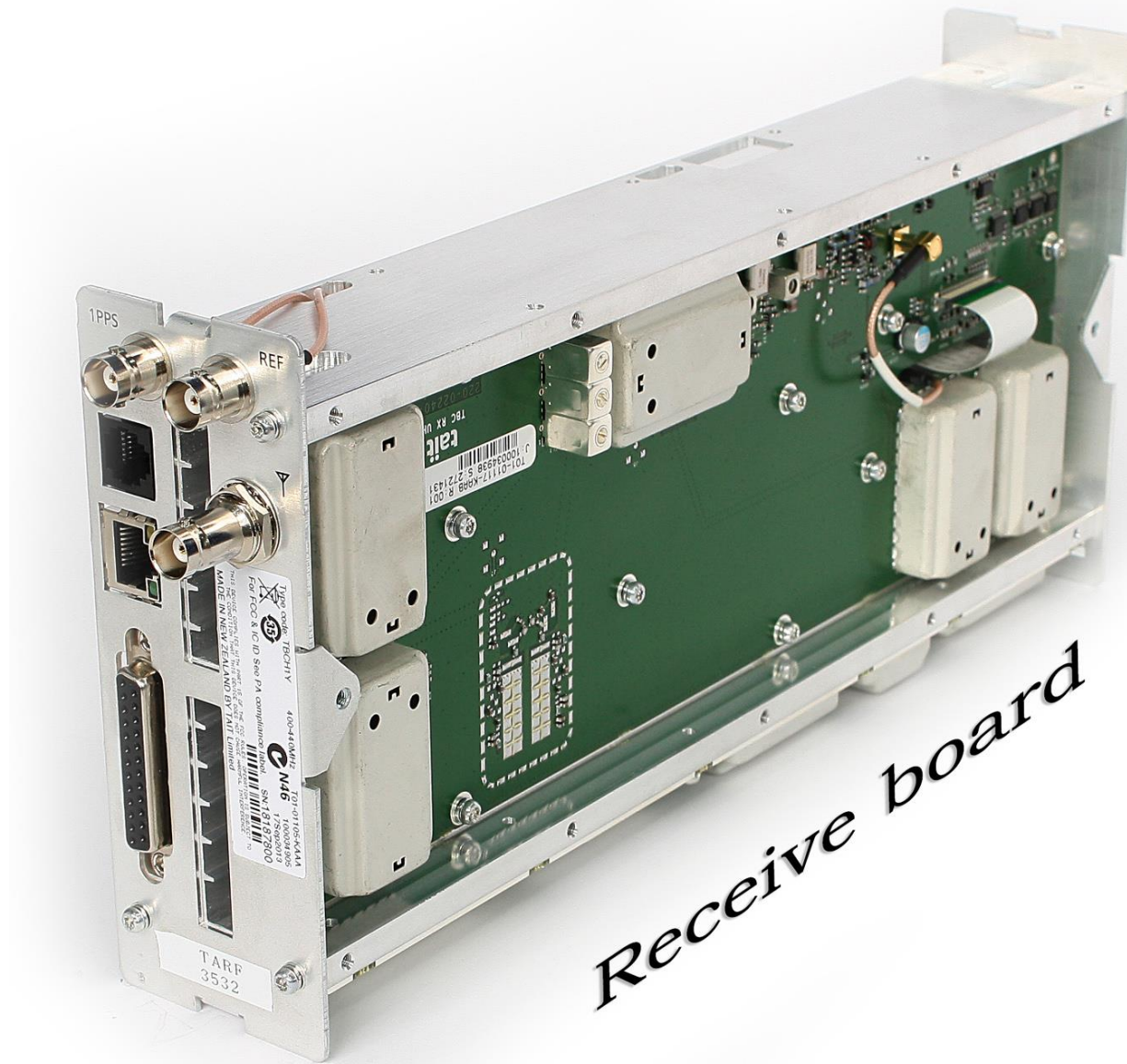
Photograph 07: Control PCB - Bottom



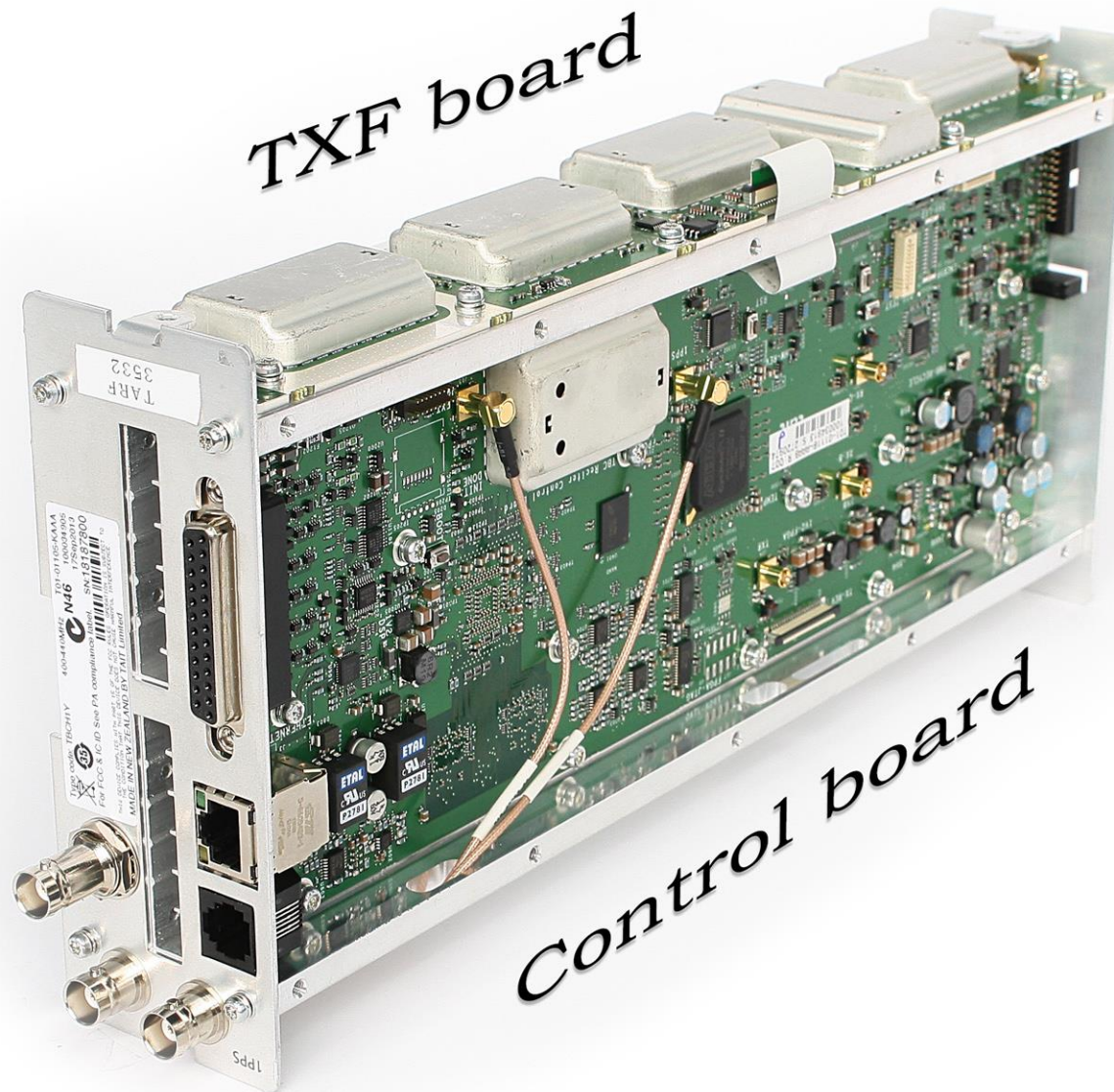
Photograph 08: LPF PCB - Top



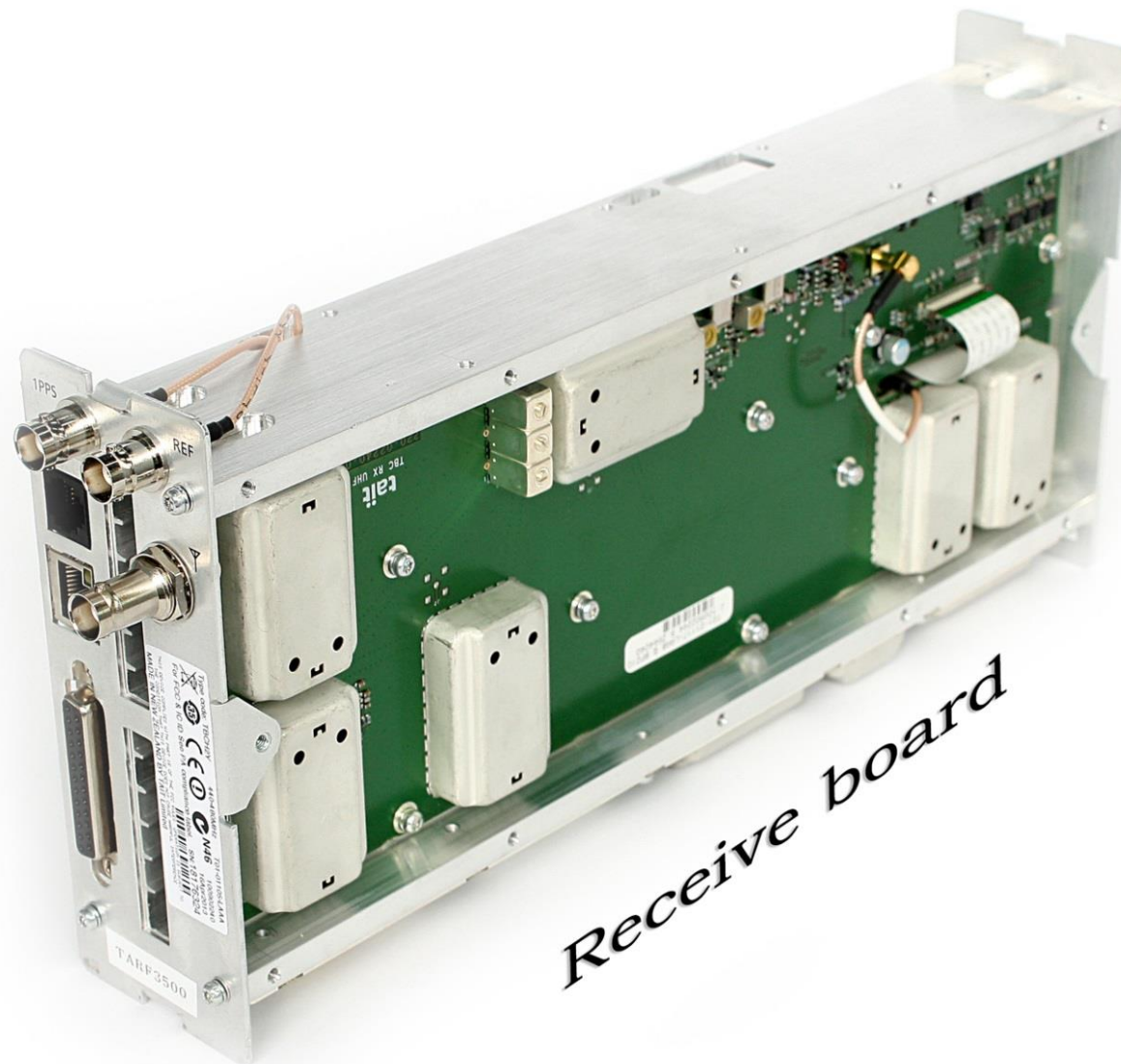
Photograph 09: LPF PCB - Bottom



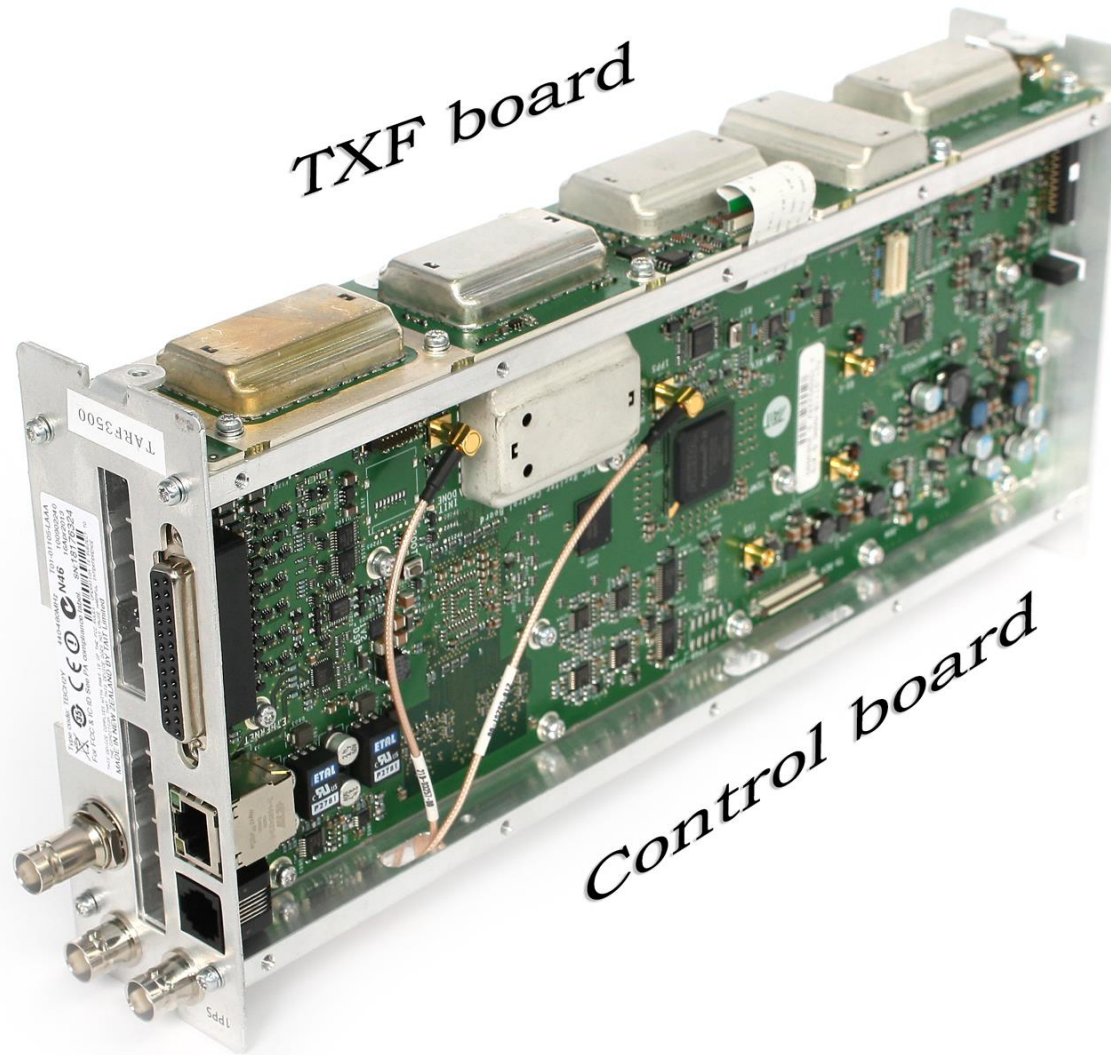
Photograph 10: Reciter module (400-440MHz) – Internal (Receiver PCB side)



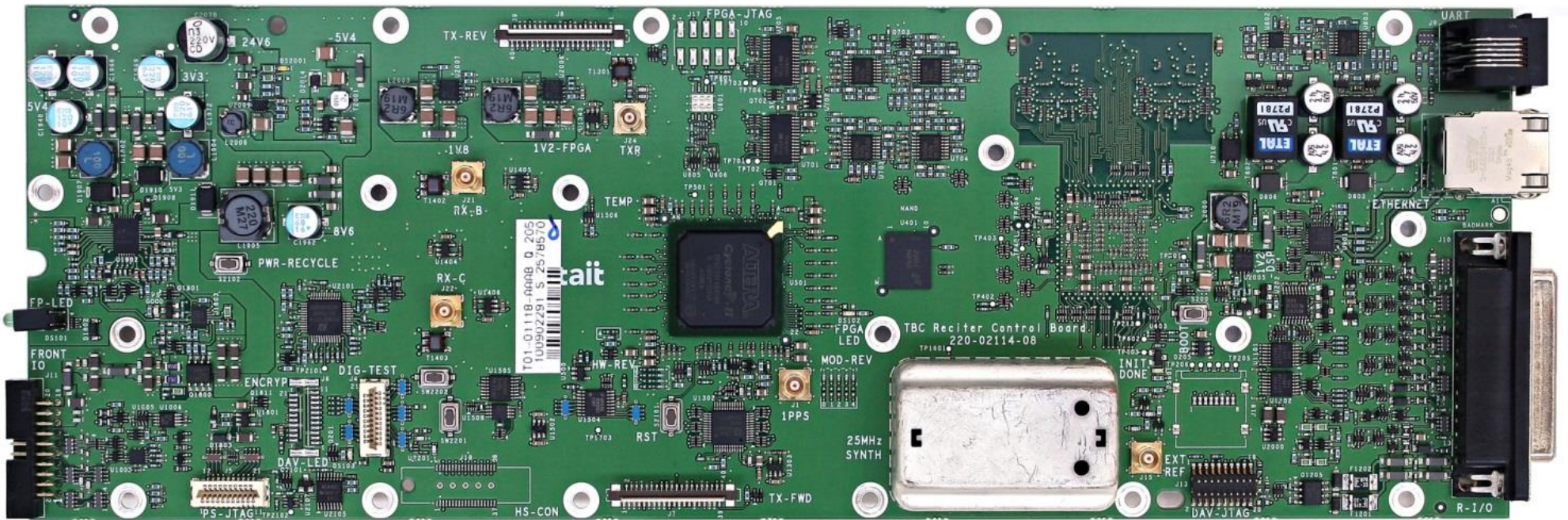
Photograph 11: Reciter module (400-440MHz) – Internal (Control PCB side)



Photograph 12: Reciter module (440-480MHz) – Internal (Receiver PCB side)

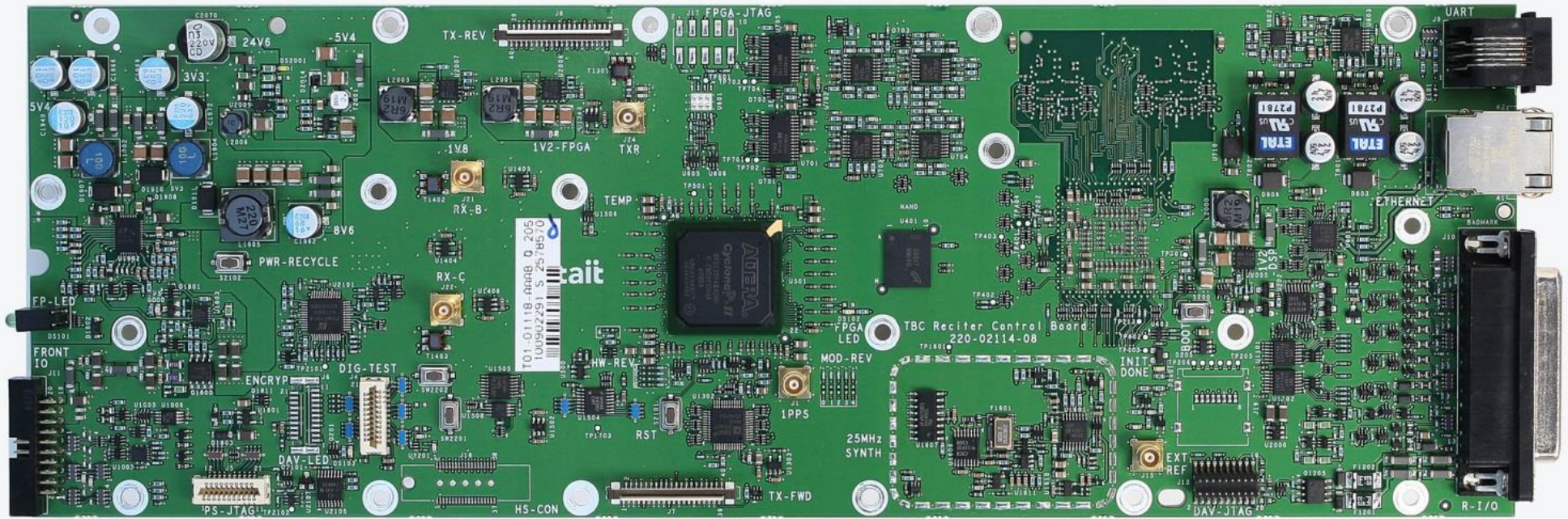


Photograph 13: Reciter module (440-480MHz) – Internal (Control PCB side)

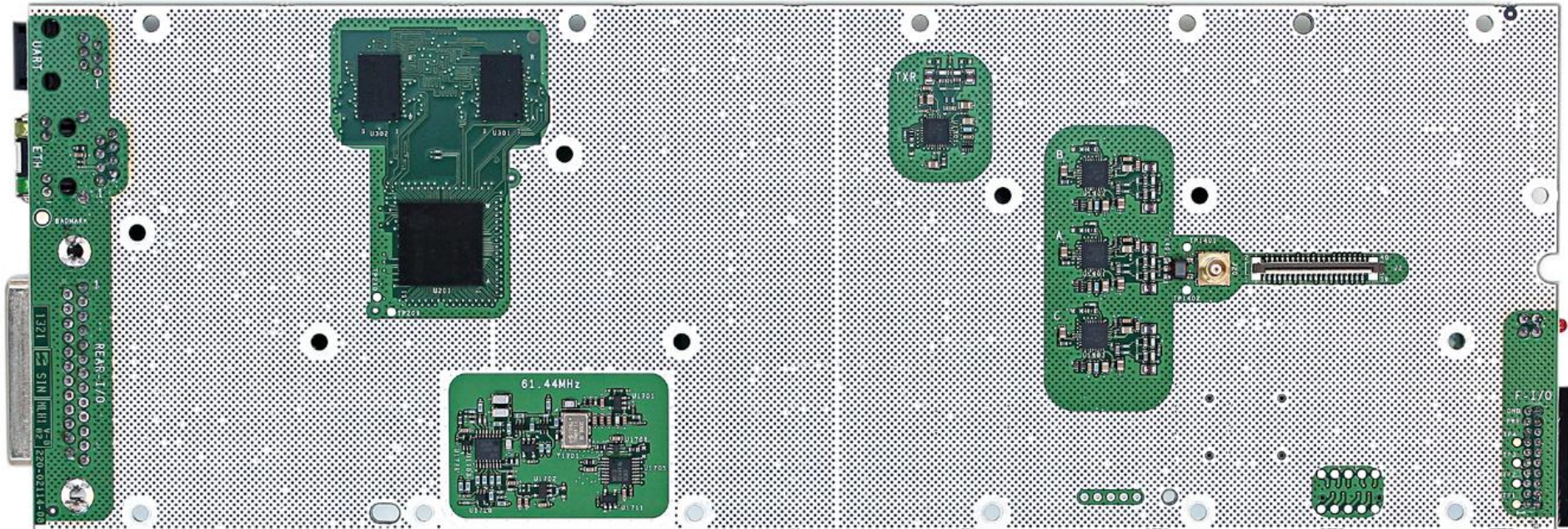


Photograph 14: Reciter Control PCB – Top (with shield)

Tait Limited
535 Wairakei Road, Christchurch 8053
PO Box 1645 CHCH
New Zealand
+64 3 358 3399, www.taitradio.com



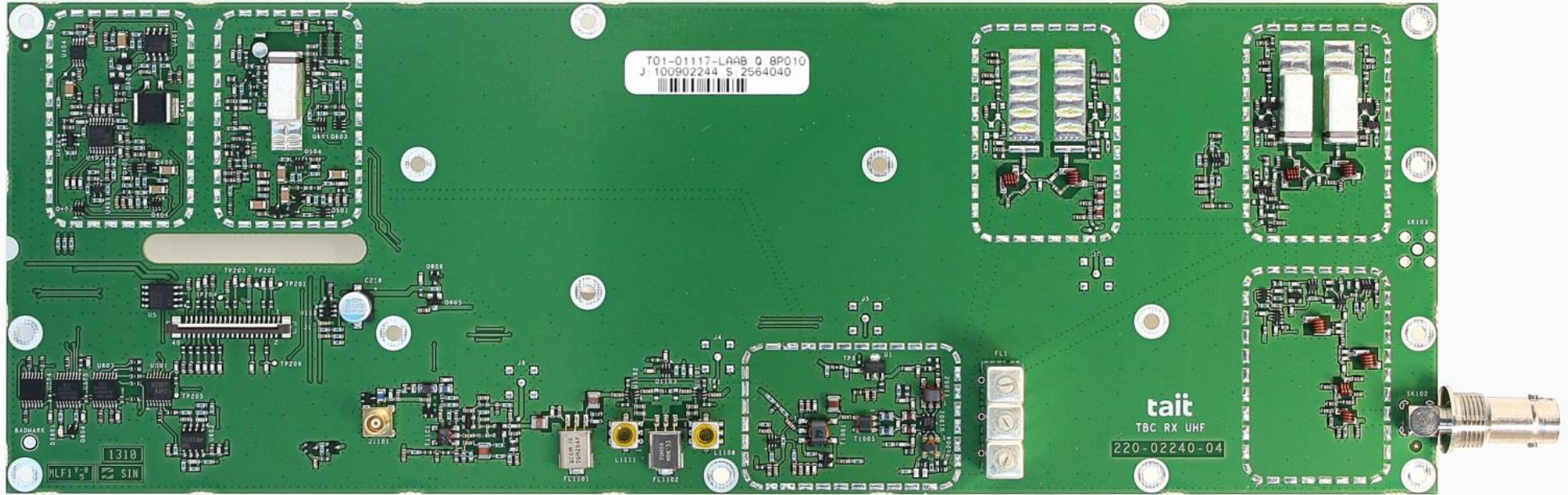
Photograph 15: Reciter Control PCB – Top (without shield)



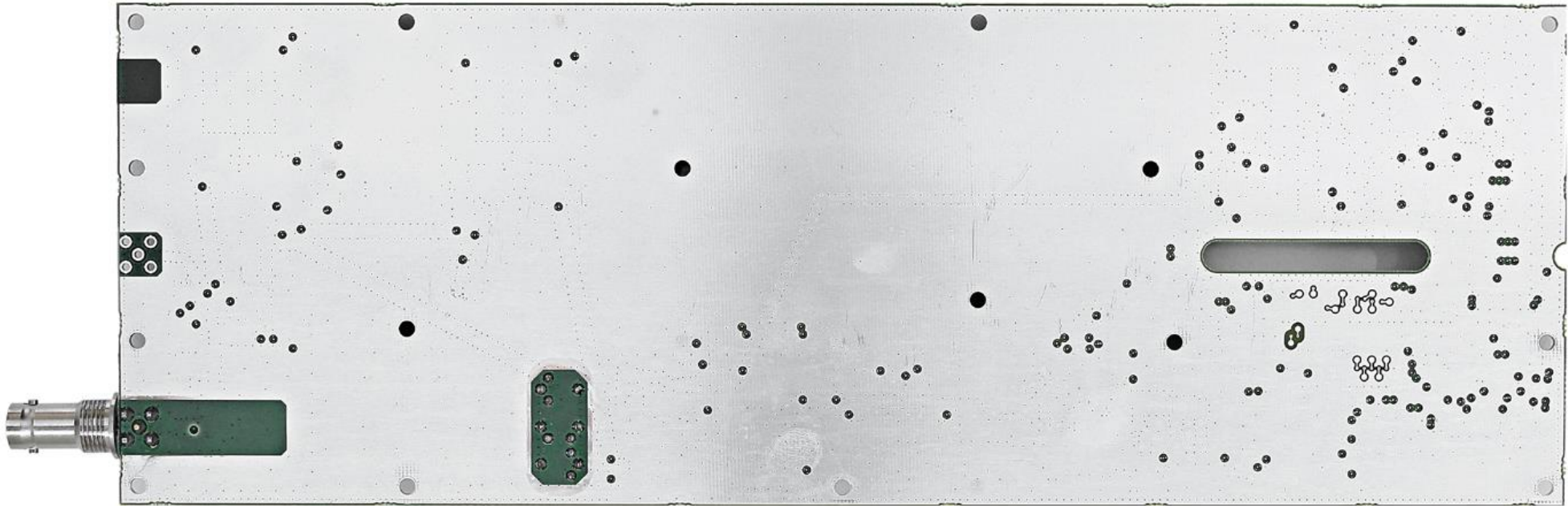
Photograph 16: Reciter Control PCB - Bottom



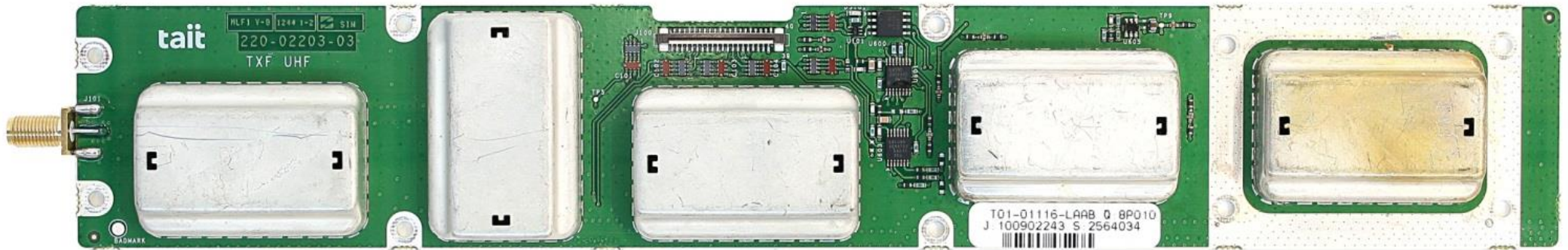
Photograph 17: Reciter Receiver PCB – Top (with shields)



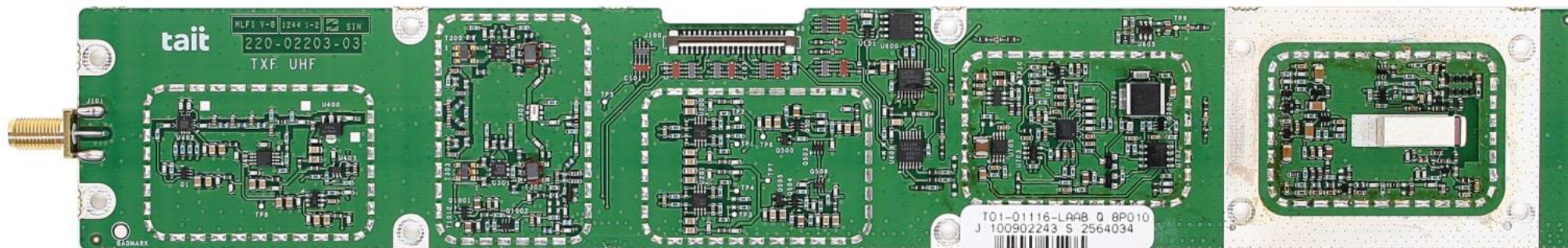
Photograph 18: Reciter Receiver PCB – Top (without shields)



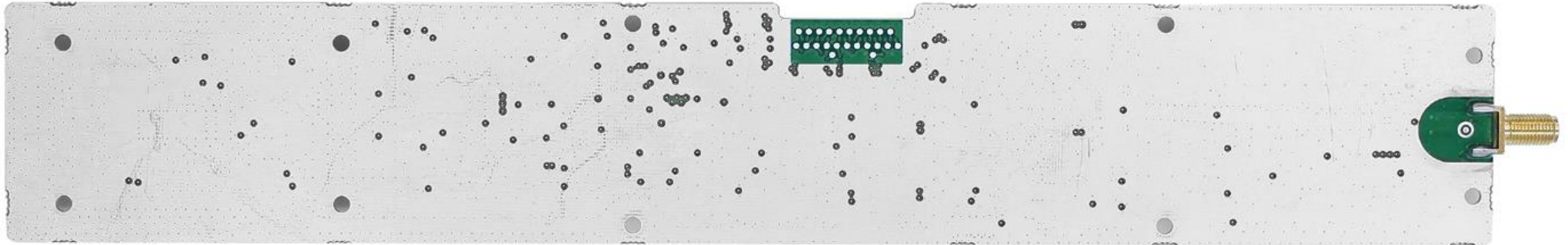
Photograph 19: Reciter Receiver PCB - Bottom



Photograph 20: Reciter TXF PCB – Top (with shields)



Photograph 21: Reciter TXF PCB – Top (without shields)



Photograph 22: Reciter TXF PCB - Bottom