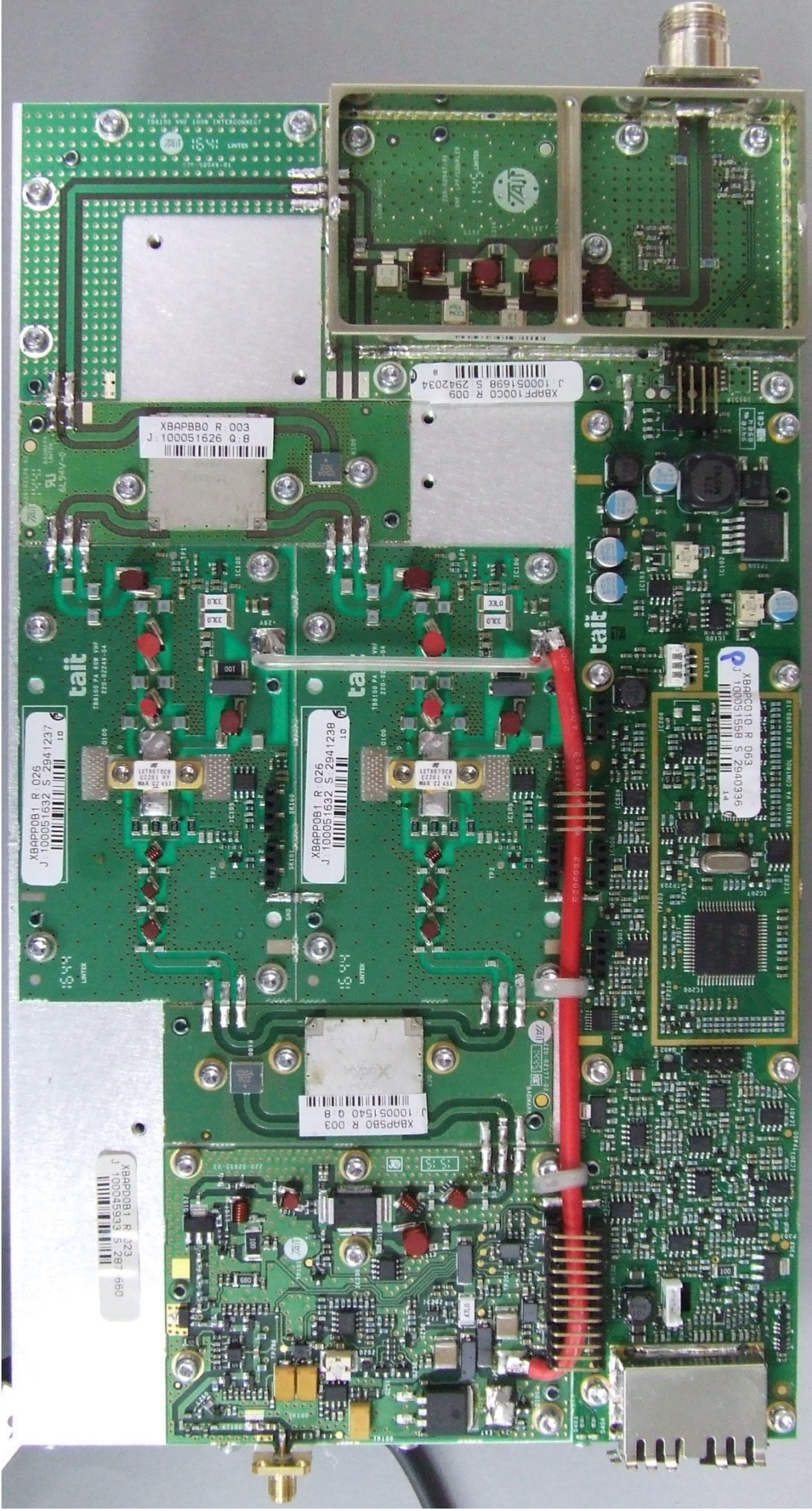


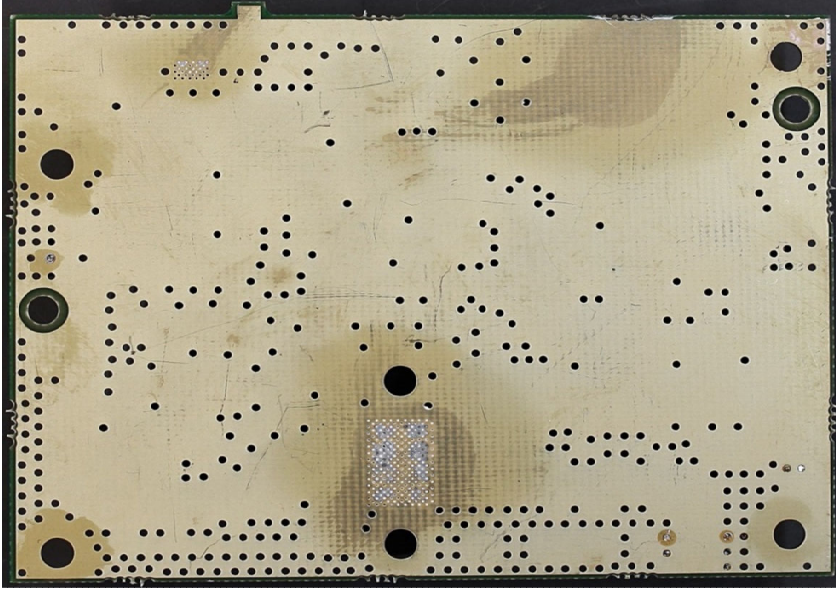
Photograph 12: 100 Watt Power Amplifier – Internal

Tait Limited
245 Woolbridge Road, Christchurch 8051
PO Box 1645 CHCH
New Zealand
+64 3 358 3399, www.taitradio.com

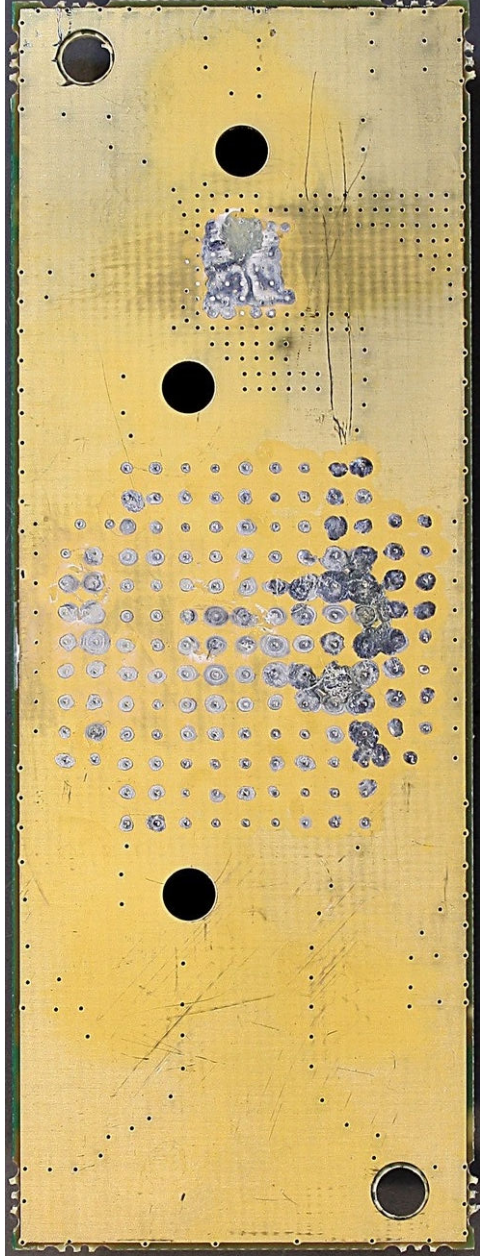
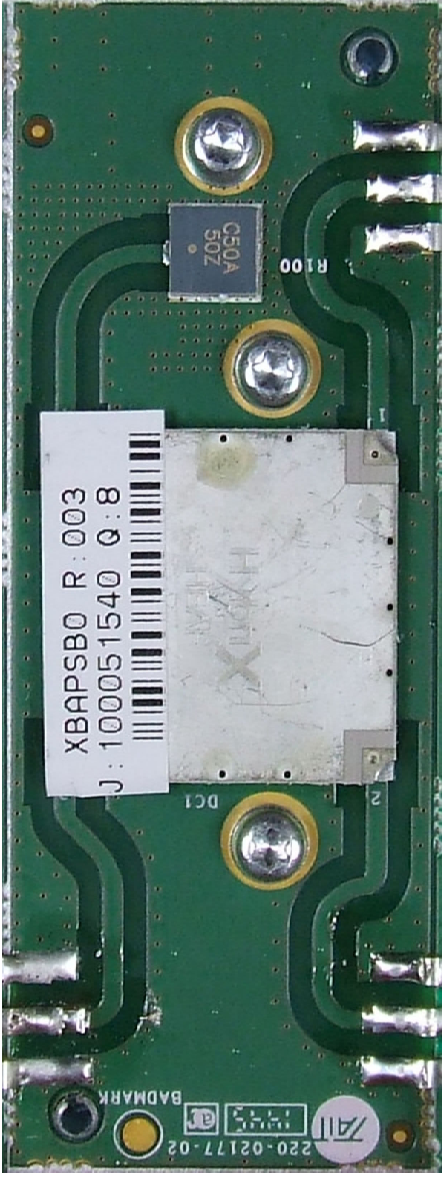


Photograph 13: 100 Watt Power Amplifier – (cans off)

Tait Limited
245 Woolbridge Road, Christchurch 8051
PO Box 1645 CHCH
New Zealand
+64 3 358 3399, www.taitradio.com

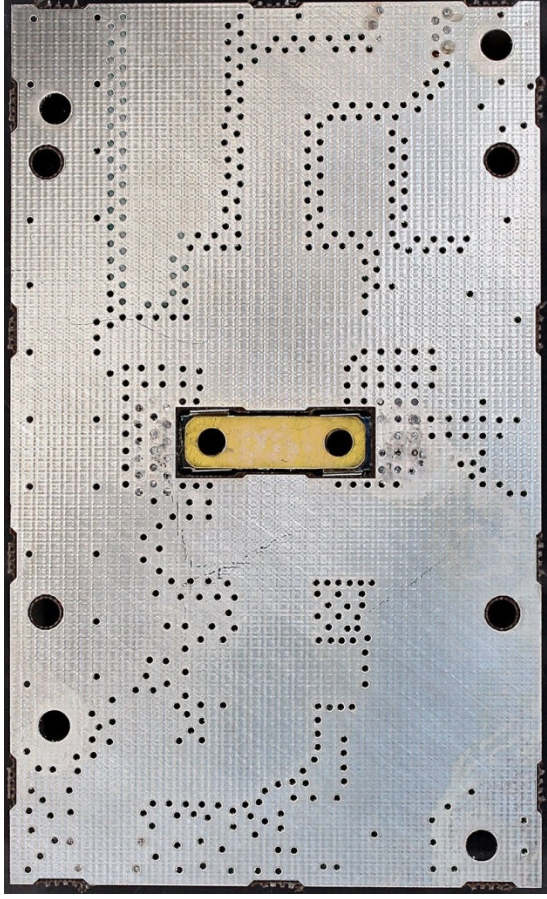
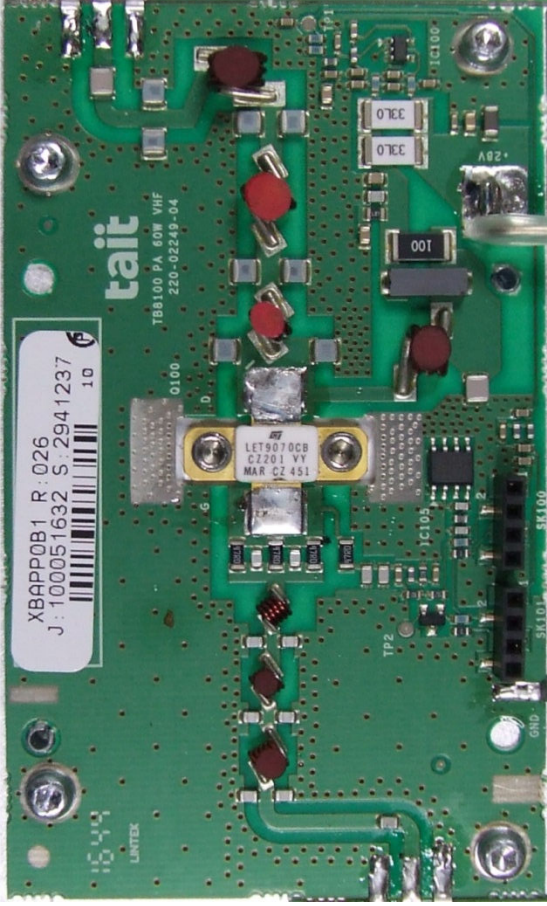


Photograph 14: Power Amplifier 6W Driver PCB – Top & Bottom



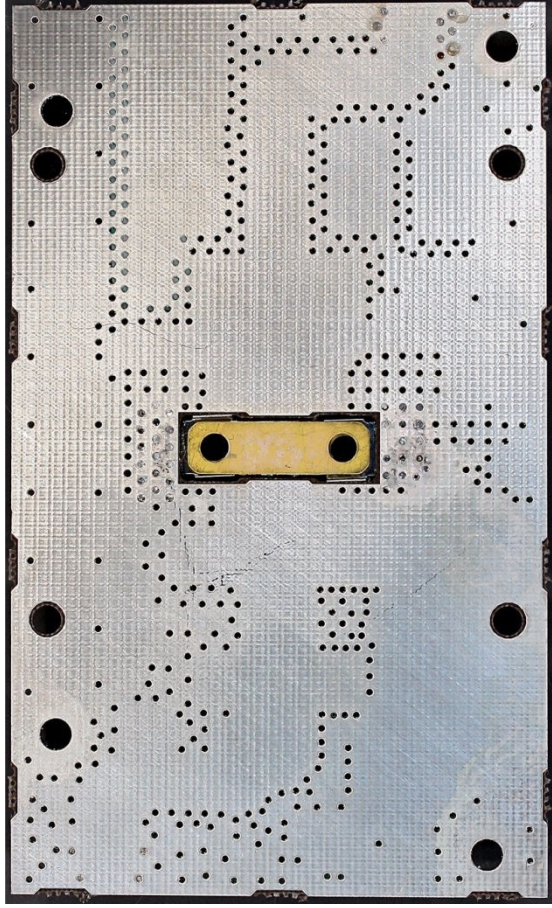
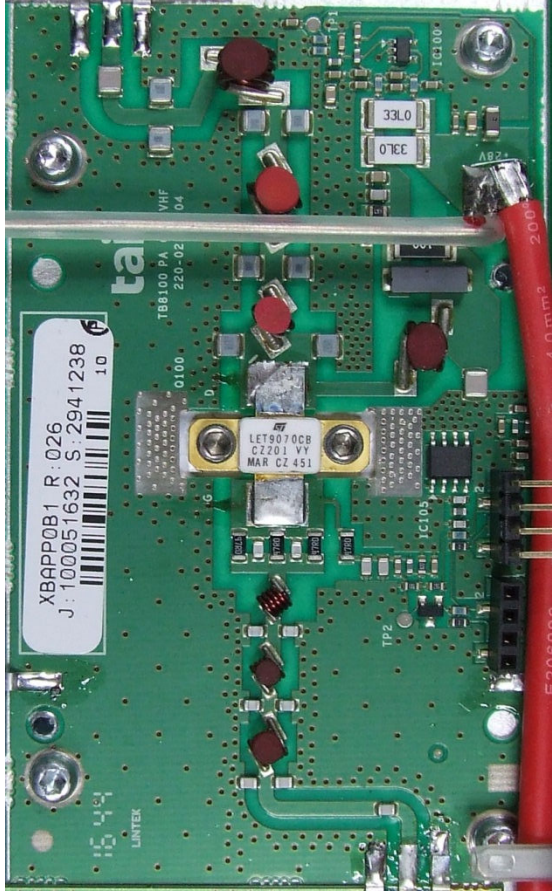
Photograph 15: Power Amplifier Splitter PCB – Top & Bottom

Tait Limited
245 Woolbridge Road, Christchurch 8051
PO Box 1645 CHCH
New Zealand
+64 3 358 3399, www.taitradio.com



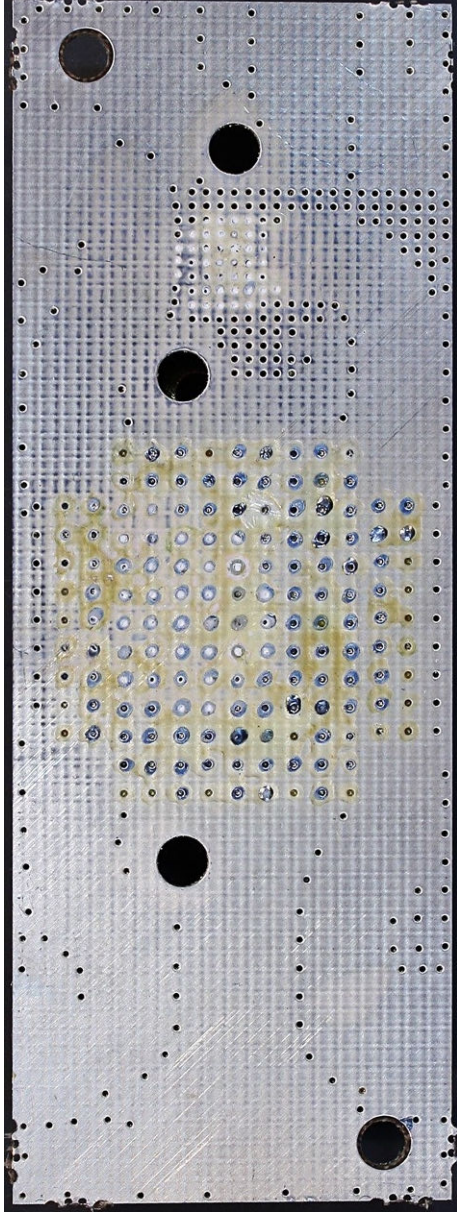
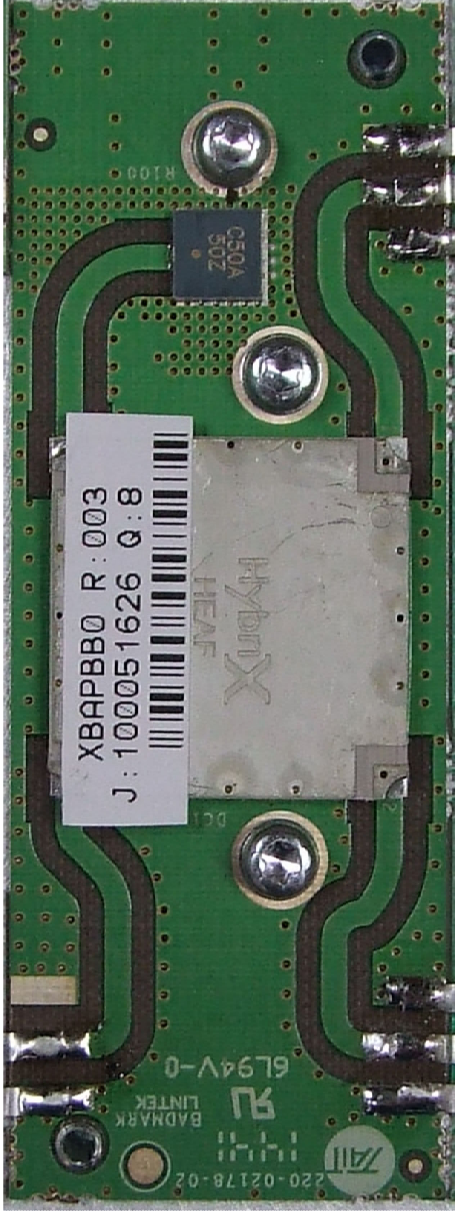
Photograph 16: Power Amplifier 60W PA 1 PCB – Top & Bottom

Tait Limited
245 Woolbridge Road, Christchurch 8051
PO Box 1645 CHCH
New Zealand
+64 3 358 3399, www.taitradio.com



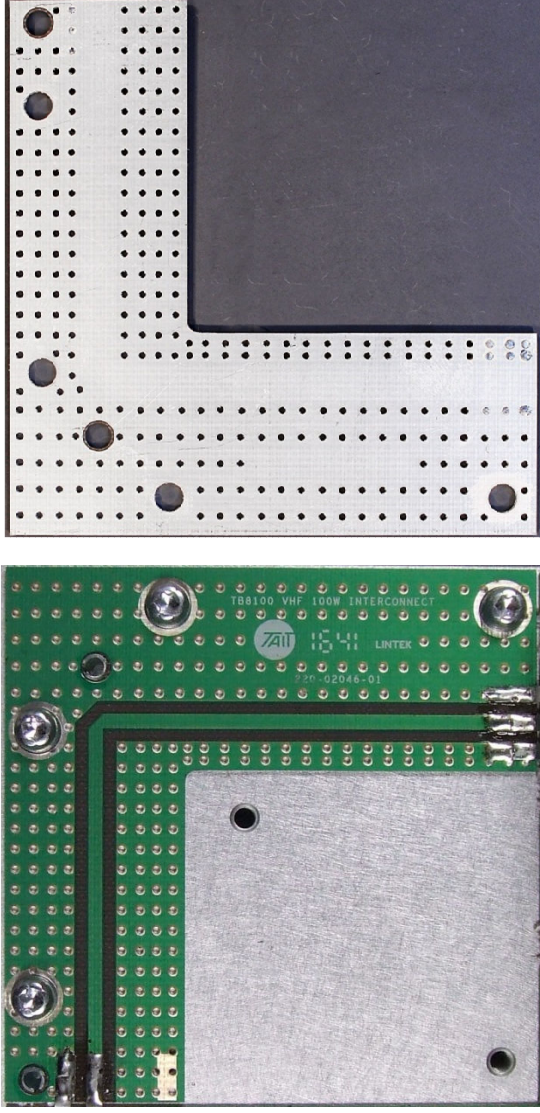
Photograph 17: Power Amplifier 60W PA 2 PCB – Top & Bottom

Tait Limited
245 Woolbridge Road, Christchurch 8051
PO Box 1645 CHCH
New Zealand
+64 3 358 3399, www.taitradio.com

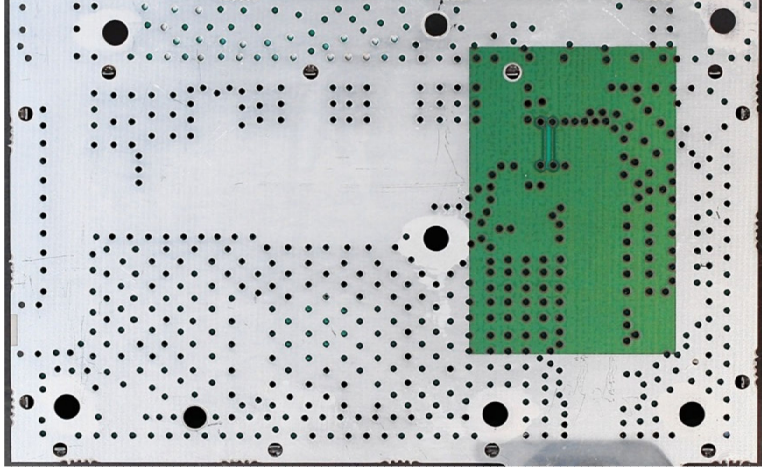
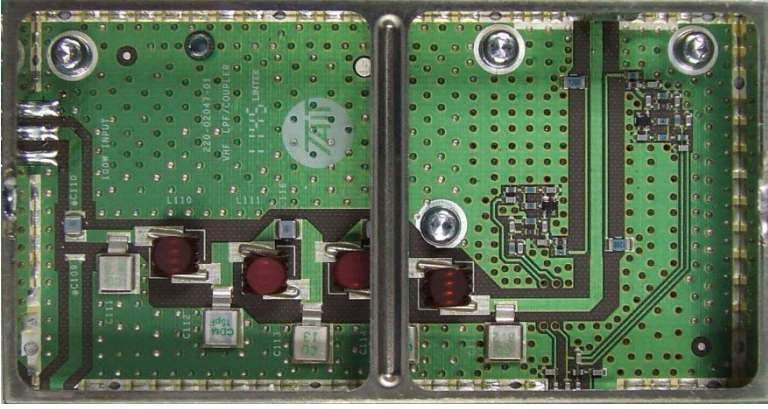


Photograph 18: Power Amplifier Combiner PCB – Top & Bottom

Tait Limited
245 Woodridge Road, Christchurch 8051
PO Box 1645 CHCH
New Zealand
+64 3 358 3399, www.taitradio.com

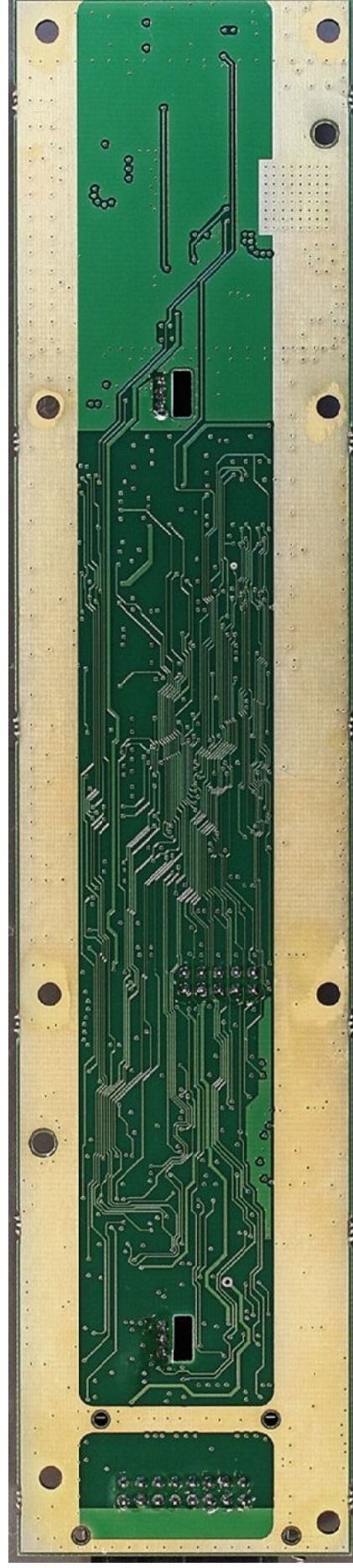


Photograph 19: Power Amplifier Interconnect PCB – Top & Bottom



Photograph 20: Power Amplifier LPF PCB – Top & Bottom

Tait Limited
245 Woolbridge Road, Christchurch 8051
PO Box 1645 CHCH
New Zealand
+64 3 358 3399, www.taitradio.com



Photograph 21: Power Amplifier Control PCB – Top & Bottom