

LCD TELEVISION


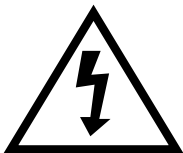
INSTRUCTION MANUAL

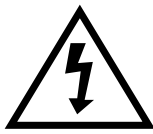
C32HDHB
C37HDHB
C42HDHB
C42FHDHB

**Proper use guarantees
product life.**

**Before using the product, be advised
that you read this owner's manual well
and try to operate it.**

Caution

	CAUTION RISK OF ELECTRIC SHOCK DO NOT OPEN	
CAUTION : TO REDUCE THE RISK OF ELECTRIC SHOCK, DO NOT REMOVE COVER (OR BACK). NO USER-SERVICEABLE PARTS INSIDE. REFER SERVICING TO QUALIFIED SERVICE PERSONNEL.		



The lightning flash with arrowhead symbol, within an equilateral triangle, is intended to alert the user to the presence of uninsulated "dangerous voltage" within the product's enclosure that may be of sufficient magnitude to constitute a risk electric shock.



The exclamation point within an equilateral triangle is intended to alert the user to the presence of important operating and servicing instructions in the literature accompanying the appliance.

WARNING : TO REDUCE THE RISK OF FIRE OR ELECTRIC SHOCK, DO NOT EXPOSE THIS APPARATUS TO RAIN OR MOISTURE AND OBJECTS FILLED WITH LIQUIDS, SUCH AS VASES, SHOULD NOT BE PLACED ON THIS APPARATUS.

CAUTION : TO PREVENT ELECTRIC SHOCK, MATCH WIDE BLADE OF PLUG TO WIDE SLOT, FULLY INSERT.

Caution

FCC RF INTERFERENCE STATEMENT

NOTE :

This equipment has been tested and found to comply with the limits for a Class B digital device, pursuant to Part 15 of the FCC Rules. These limits are designed to provide reasonable protection against harmful interference in a residential installation.

This equipment generates, uses and can radiate radio frequency energy and, if not installed and used in accordance with the instructions, may cause interference to radio communications. However, there is no guarantee that interference will not occur in a particular installation.


If this equipment does cause interference to radio or television reception which can be determined by turning the equipment off and on, the user is encouraged to try to correct the interference by one or more of the following measures.

- Reorient or relocate the receiving antenna.
- Increase the separation between the equipment and receiver.
- Connect the equipment into an outlet on a circuit different from that to which the receiver is connected.
- Consult authorized service centers for help.
- Only shielded interface cable should be used.

Finally, any changes or modifications to the equipment by the user not expressly approved by the grantee or manufacturer could void the users authority to operate such equipment,

IMPORTANT SAFETY INSTRUCTIONS

Please read the following safeguards for your TV and retain for future reference. Always follow all warnings and instructions marked on the television.

1. Read these instructions.
2. Keep these instructions.
3. Heed all warnings.
4. Follow all instructions.
5. Do not use this apparatus near water.
6. Clean only with dry cloth.
7. Do not block any ventilation openings. Install in accordance with the manufacturer's instructions.
8. Do not install near any heat sources such as radiators, heat registers, stoves, or other apparatus (including amplifiers) that produce heat.
9. Do not defeat the safety purpose of the polarized or grounding-type plug. A polarized plug has two blades with one wider than the other. A grounding type plug has two blades and a third grounding prong. The wide blade or the third prong are provided for your safety. If the provided plug does not fit into your outlet, consult an electrician for replacement of the obsolete outlet.
10. Protect the power cord from being walked on or pinched particularly at plugs, convenience receptacles, and the point where they exit from the apparatus.
11. Only use attachments/accessories specified by the manufacturer.
-  12. Use only with the cart, stand, tripod, bracket, or table specified by the manufacturer, or sold with the apparatus. When a cart is used, use caution when moving the cart/apparatus combination to avoid injury from tip-over.
13. Unplug this apparatus during lightning storms or when unused for long periods of time.
14. Refer all servicing to qualified service personnel. Servicing is required when the apparatus has been damaged in any way, such as power-supply cord or plug is damaged, liquid has been spilled or objects have fallen into the apparatus, the apparatus has been exposed to rain or moisture, does not operate normally, or has been dropped.
15. DISCONNECTING DEVICE FROM MAINS - Main plug is the disconnecting device. The plug must remain readily operable.

IMPORTANT SAFETY INSTRUCTIONS



16. Wall or Ceiling Mounting

When mounting the product on a wall or ceiling, be sure to install the product using the designated mounting tool according to the method recommended by the manufacturer.

17. Attachments and Equipment

Never add any attachment and/or equipment without approval of the manufacturer as such additions may result in the risk of fire, electric shock or other personal injury.

18. Power Source

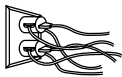
This TV should be operated only from the type of power source indicated on the marking label. If you are not sure of the type of power supplied to your home, consult your appliance dealer or local power company.

19. Power Lines

An outside antenna system should not be located in the vicinity of overhead power lines or other electric light or power circuits, or where it can fall into such power lines or circuits. When installing an outside antenna system, extreme care should be taken to keep from touching such power lines or circuits as contact with them might be fatal.

20. Overloading

Do not overload wall outlets and extension cords as this can result in a risk of fire or electric shock.

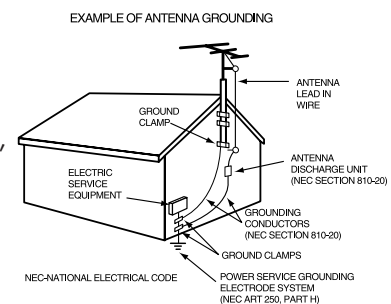


21. Object and Liquid Entry

Never push objects of any kind into this TV through openings as they may touch dangerous voltage points or short-out parts that could result in fire or electric shock. Never spill liquid of any kind on or into the TV.

22. Outdoor Antenna Grounding

If an outside antenna or cable system is connected to the TV, be sure the antenna or cable system is grounded so as to provide some protection against voltage surges and built-up static charges. Section 810 of the National Electric Code, ANSI /NFPA No. 70-1984, provides information with respect to proper grounding of the mast and supporting structure, grounding of the lead in wire to an antenna discharge unit, size of grounding conductors, location of antenna discharge unit, connection to grounding electrodes, and requirements for the grounding electrode.



23. Safety Check

Upon completion of any service or repair to the TV, ask the service technician to perform safety checks to determine that the TV is in safe operating condition.

Warning

This section must be read carefully and followed by the user prior to the operation of the product.

The manual states important instructions for the user's own safety, and the proper operation of the product.



Warning

Ignoring or disregarding the contents of this section and improper operation of the product may result in the person's death or serious injury.

In case of an accident, please unplug the unit from the outlet immediately.

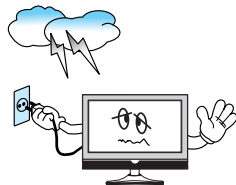
To reduce the risk of electric shock, do not remove cover or back. No user-serviceable parts inside. Refer to qualified service personnel for repair.



Do not put any object that contains water - such as flowerpot - near to the unit. The water may penetrate into the unit, and be a cause of fire or hazardous electric shock.



To prevent fire and damages to the product, unplug the unit from the outlet during lightning storm, or when it is left unattended and unused for a long period of time.



Do not put on or use the product near water and moisture - such as in a bathroom, washbowl, etc. It may be a cause of fire and electric shock hazards.



Slots and openings in the case are provided for ventilation to ensure reliable operation of the product. Never put in any item - such as a coin, paper, match - through these openings since it may touch dangerous voltage points that could result in fire or shock hazard.



Do not let children hang on or climb on the product since it may be a cause of serious injury.



Hold the plug when unplugging the unit from the outlet. The cord may cause fire or electric shock if damaged.



Do not cause the product to lean or put it in an unstable place since it may cause a serious injury to a person, as well as damage to the product if it falls.



Warning

This section must be read carefully and followed by the user prior to the operation of the product.

The manual states important instructions for the user's own safety, and the proper operation of the product.

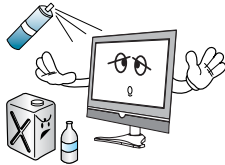


Caution

Ignoring or disregarding the contents of this section and improper operation of the product may result in the person's death or serious injury.

Please keep the user's manual in a safe place for future reference.

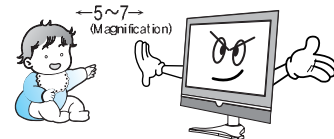
Do not put volatile substance—such as benzene, naphtha—near the product since it may cause a change in the product's color.



Do not spill water or drop the remote control since it may be a cause of malfunctioning.



Do not view the TV too closely since it may cause damage in your eyesight.



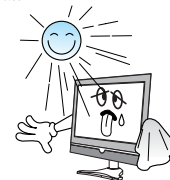
Refer servicing to qualified service personnel for cleaning at least once a year since dust inside the TV set may be a result or fire and malfunctioning of the product.



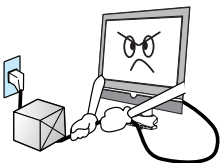
Do not cover the top of the television set. Ventilation will be prevented, and it may be a cause of fire if the product is internally overheated.



The product should be situated away from any heat source—such as radiators, heat registers, stoves, or other products that produce heat.



Do not put on any heavy item on the power cord since it may result in fire or hazardous electric shock if the cord is damaged.



Please be advised of electric wires and cables when installing the antenna. It may be a cause of hazardous electric shock and fire if the antenna touches or falls on the electric wire; thus, it must be installed firmly, and far away from the cables.



Unplug the power from the outlet and all the related connections from the unit to prevent electric shock. At least two people must work together to move the TV set when transporting to prevent the TV from falling, and consequently, any serious injury or damage.



Do not touch the power cord with moisturized or wet hands when plugging to or unplugging from the outlet since it may be a cause of electric shock.



Do not expose the product to a dusty or moisturized place since it may be a cause of malfunctioning.

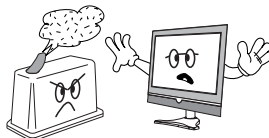


Table of Contents

Installation and Maintenance

Stand Construction	9
Antenna Connection	11
Video Connection	14
Camcorder & Video Game Connection	15
DVD Player Connection	16
STB(Set Top Box) Connection	17
PC Connection	18
USB Connection	20
Cable TV Broadcasting Connection	21
Connect with the Dolby Digital AMP	22
Name of Each Part	23

Basic Guide

Functionsa of the Remote Control	25
Method To Use Basic Menu	27
To Watch TV	28
Setting Up TV Stations	30
Selection of TV/VIDEO Input Signal	34
Selection of Multimedia Input Signal	35
Selection of Media(USB) Input Signal	37

Application Guide

Picture Adjustment	38
Sound Adjustment	42
Features - Closed Caption	46
Features - Parental Control	48
Features - ETC	53
Time Setting	54
Channel Banner	57
Troubleshooting	59
Standard of Product	61

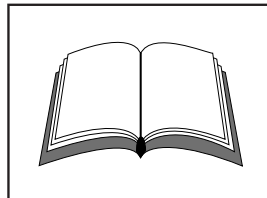
Supplied Accessories

Make sure that the following accessories are provided with the product.

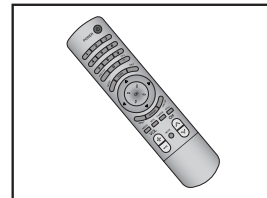


AC cord

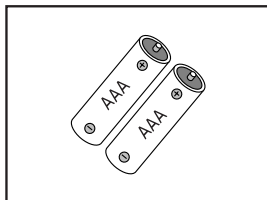
AC cord



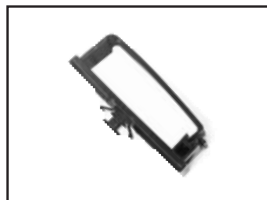
Instruction manual



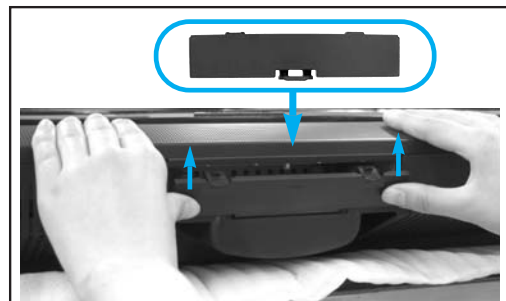
Remote control



Batteries

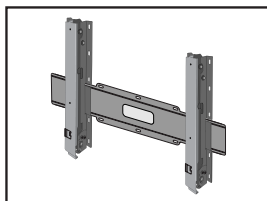


Cable holder



Cover Bottom

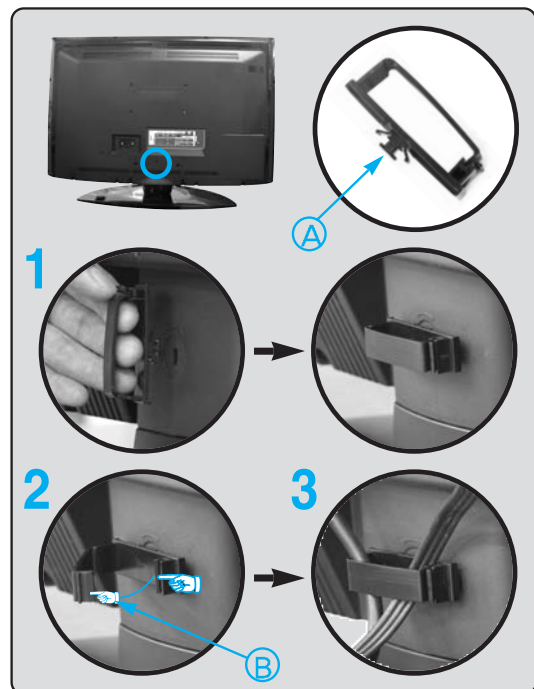
-When installing wall mount, set the cover bottom as shown above



Wall Mounting Unit
(OPTIONAL)

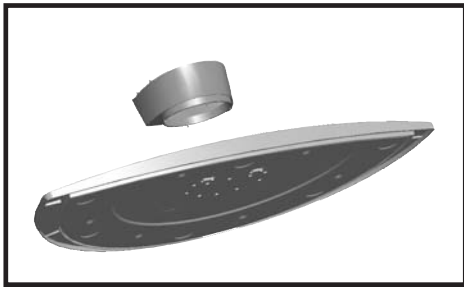
The method of wire arrangement

1. Assemble the cable holder enclosed on the back of TV. (PICTURE 1)
(ASSEMBLY METHOD: After you push the "A"(prominence part of cable holder) in the hole, rotate the cable holder clockwise as an angle of 90°. You can separate in reverse order of assembly.)
2. Open the cable holder. (PICTURE 2)
(you can open the cable holder then press and push "B" part.)
3. After arranging cables with the cable holder, lock "B" again. (PICTURE 3)

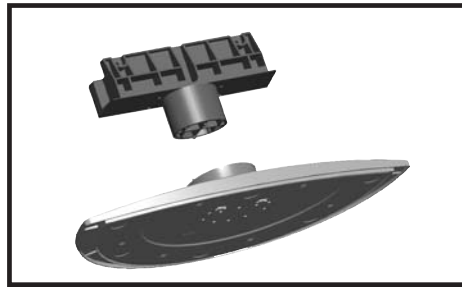


Stand Construction

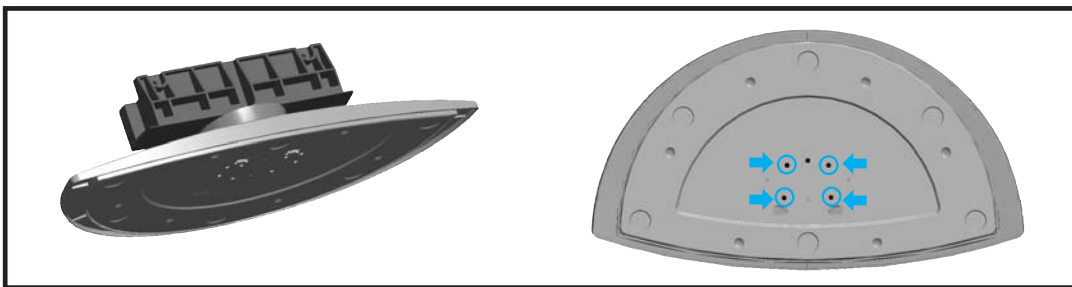
32" Stand Assy Construction



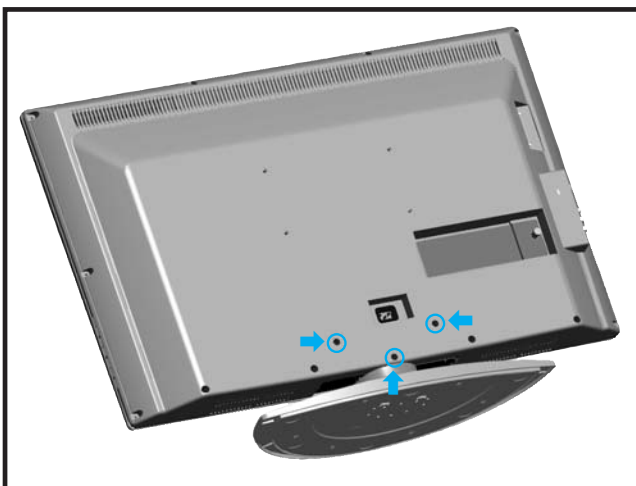
1. Insert the cover frame stand to the stand base



2. Insert the frame stand into the stand base



3. Assemble plate stand base and frame stand with the 4 screws supplied.



4. Assemble TV set and stand with the 3 screws supplied.



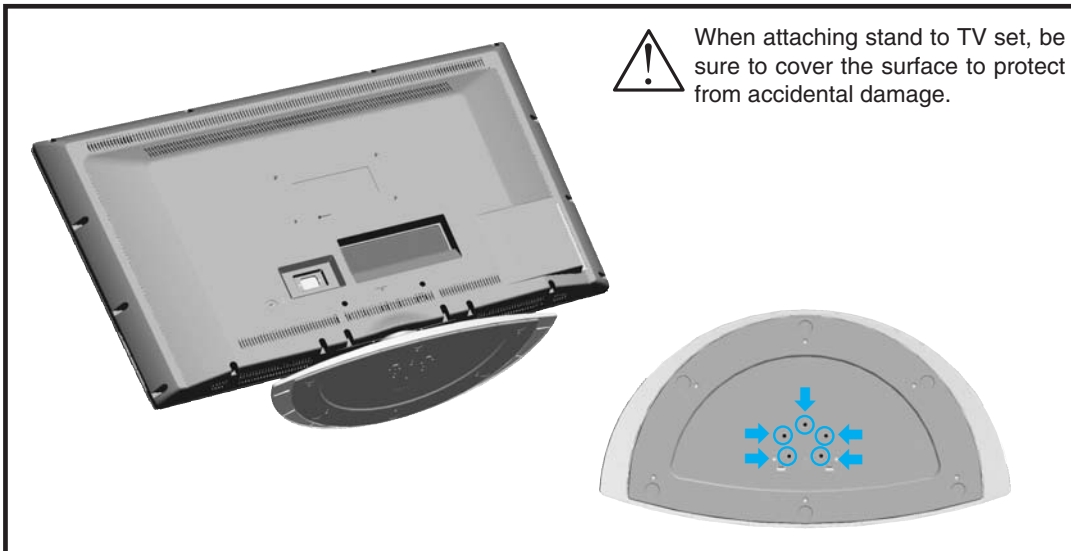
When attaching stand to TV set, be sure to cover the surface to protect from accidental damage.

Stand Construction

37" Stand Assy Construction



1. Insert the TV set to the stand assy.



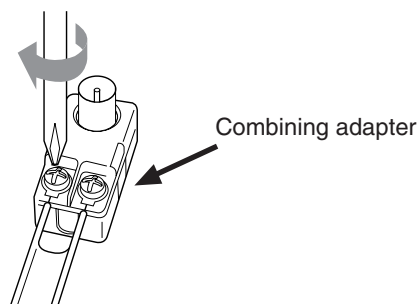
2. Assemble TV set and stand with screw 5EA.

Antenna Connection

Indoor Antenna Connection

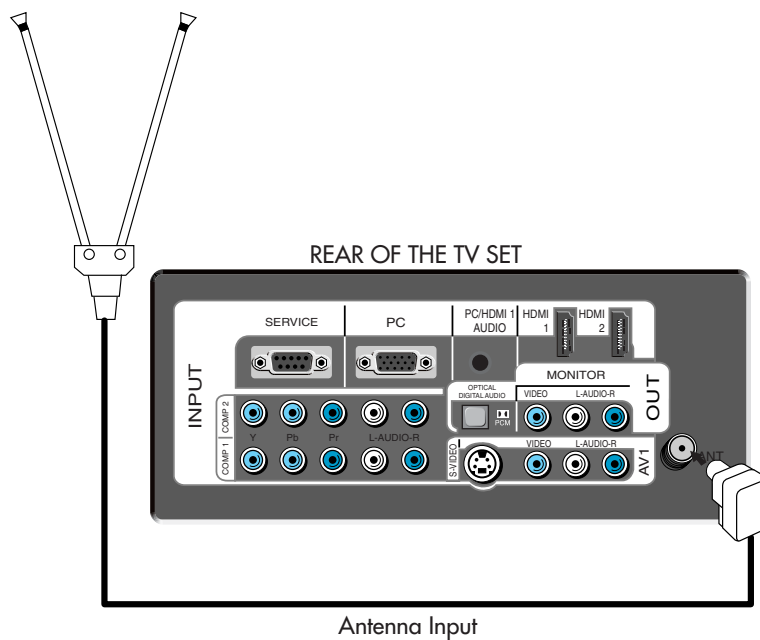
1. Connect the feeder cable of the antenna to the combining adapter.

WHEN THE IMAGE IS NOT CLEAR : Unclear screen image and bad reception may be a cause of wrong antenna connection. Be sure to check its direction and place when installing.



2. Connect the combining adapter to the antenna input at the left side of the TV set.

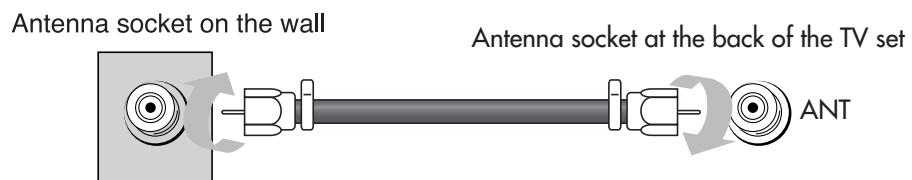
WHEN USING THE COMBINING ADAPTER : You may obtain the combining adapter at your closest Service Center.



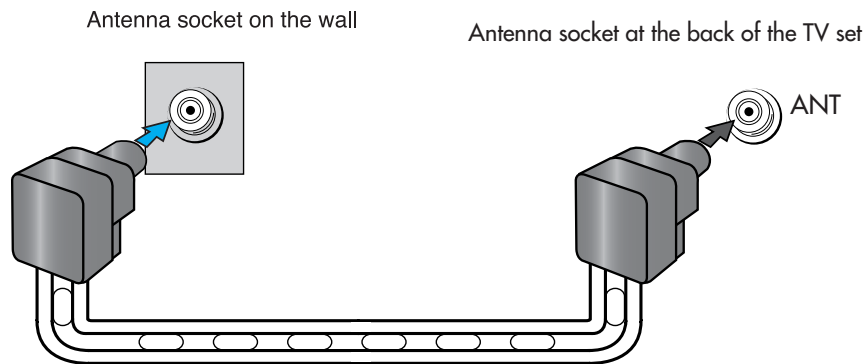
Antenna Connection

Antenna Connection

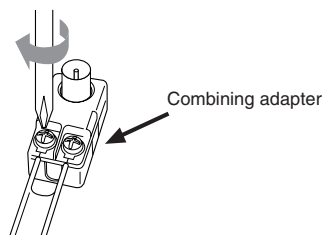
When a coaxial cable is used : Plug the coaxial cable to the antenna socket on the wall.



When a feeder cable is used : Plug the coaxial cable to the antenna socket on the wall.



Feeder cable connection with the combining adapter

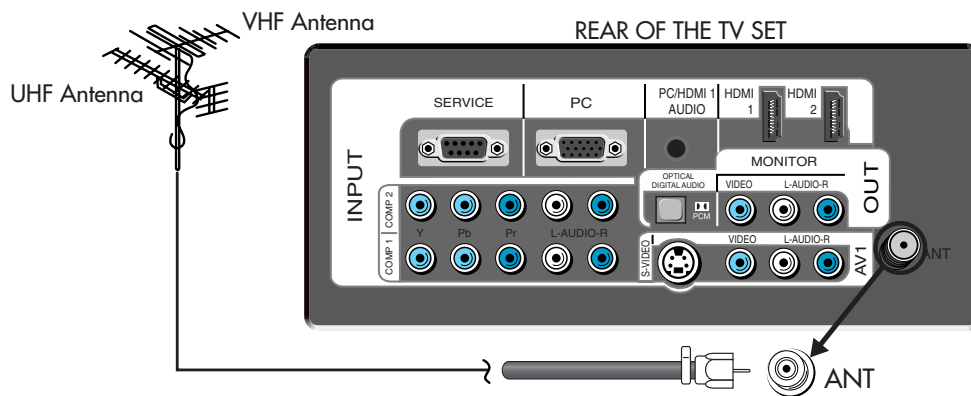


Antenna Connection

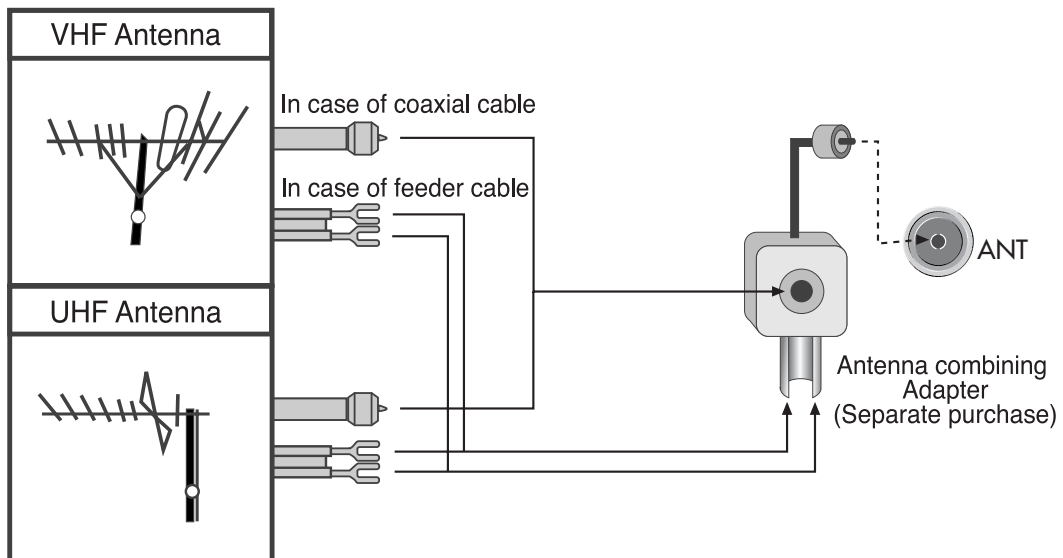
Outdoor Antenna Connection

Outdoor Antenna connection-such as VHF or/and UHF-may be necessary for installation at private houses

Single Antenna Connection



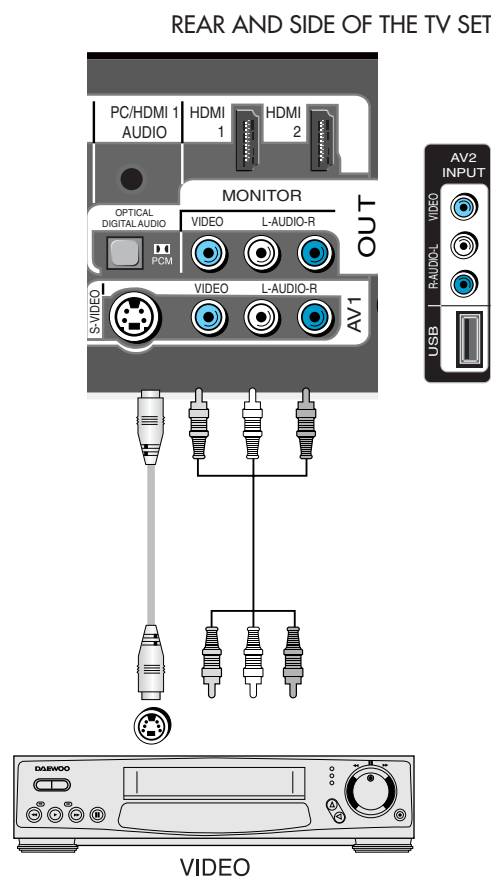
Separate Antenna Connection.



Video Connection

Connecting with an External Source

You may connect S-Video1(Rear of the TV) input to enjoy clearer and brighter picture images. You can make the connection with the AV1 or AV2 input.

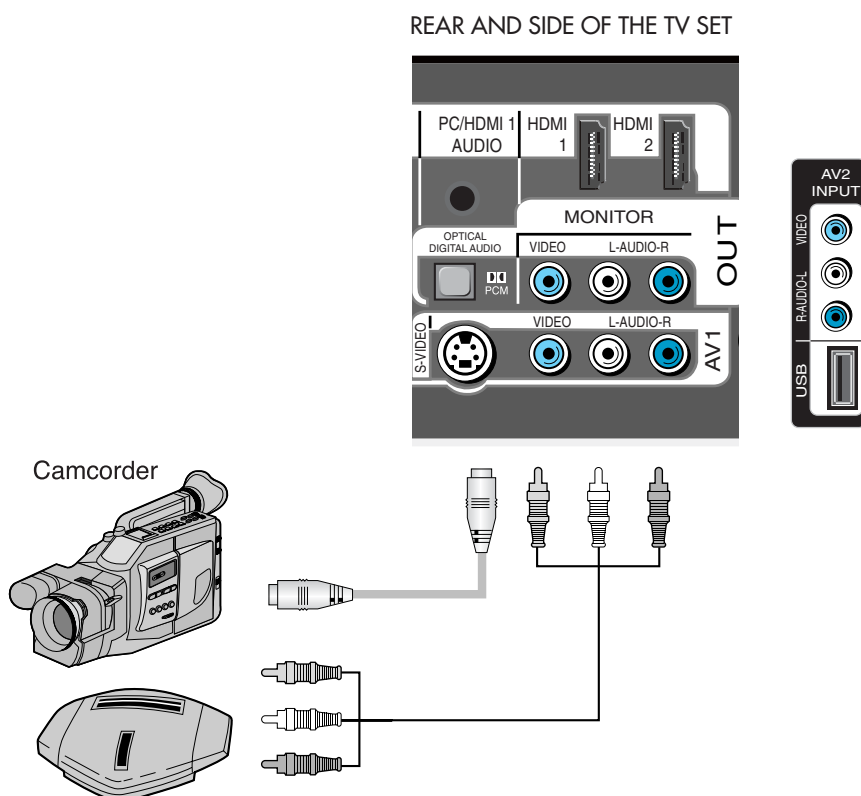


- Note :**
- If your AV device has both Video OUT terminal and S-Video OUT terminal, S-Video connection is recommended for better picture quality.
 - If S-Video and RCA jack are connected at the same time, the TV set will only detect the S-Video mode.

Camcorder & Video Game Connection

Watching the Camcorder Recording or Video Game on TV

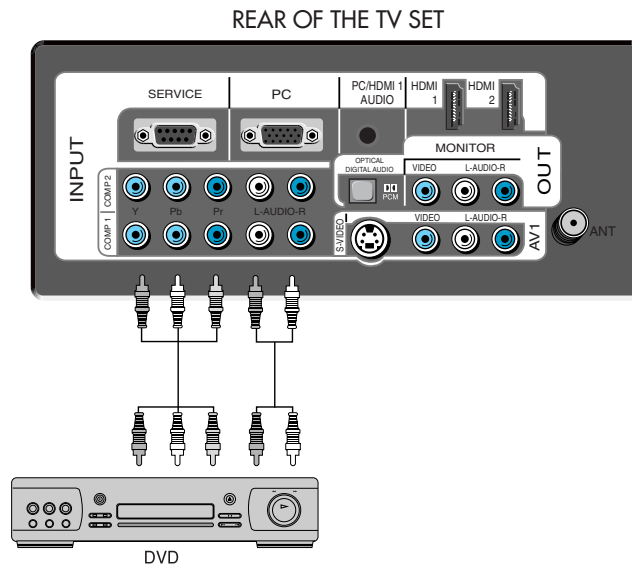
1. You can use either the S-video or the RCA connector.
2. These connectors connect to AV1/2 or S-Video1 as shown below.
3. Turn on the TV set and camcorder/video game.
4. Press "INPUT" and then You can see input menu. Select AV1, AV2 or S-Video1 mode by pressing "▲▼" and "OK" key.



- Note :**
- If your AV device has both Video OUT terminal and S-Video OUT terminal, S-Video connection is recommended for better picture quality.
 - If S-Video and RCA jack are connected at the same time, the TV set will only detect the S-Video mode.

DVD player connection

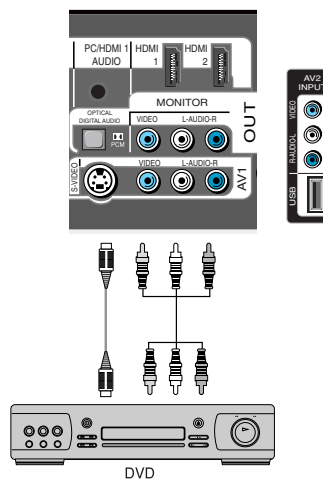
When connecting with a component cable



Note : When you connect with the component, please check the color of cable between DVD and TV set.

When connecting with a S-VHS cable and RCA cable

REAR AND SIDE OF THE TV SET

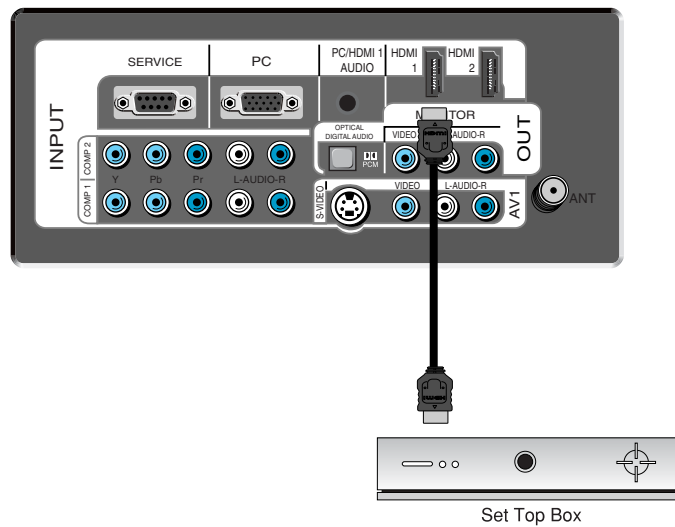


- Note :**
- If your AV device has both Video OUT terminal and S-Video OUT terminal, S-Video connection is recommended for better picture quality.
 - If S-Video and RCA jack are connected at the same time, the TV set will only detect the S-Video mode.

STB(Set Top Box) Connection

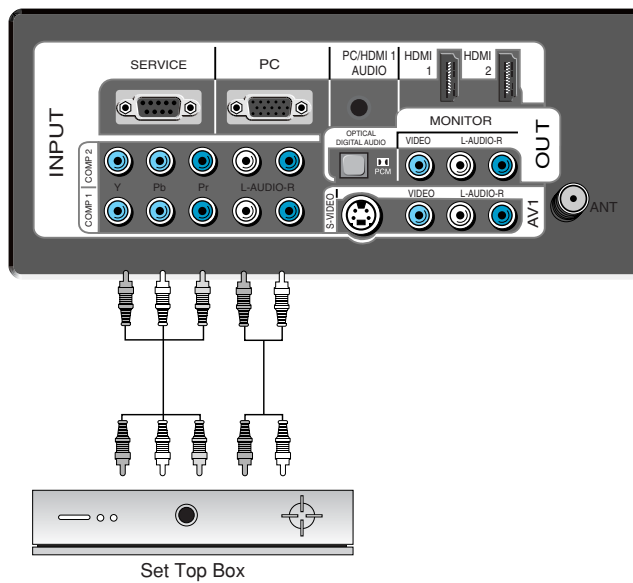
When connecting with a HDMI cable

REAR OF THE TV SET



When connecting with a component cable

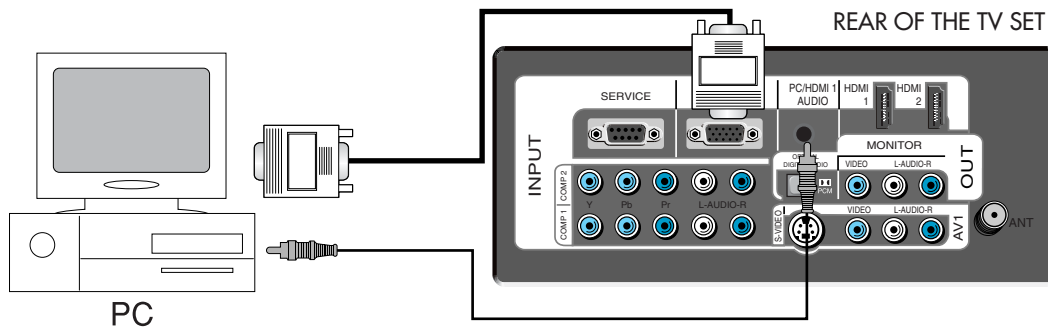
REAR OF THE TV SET



PC Connection

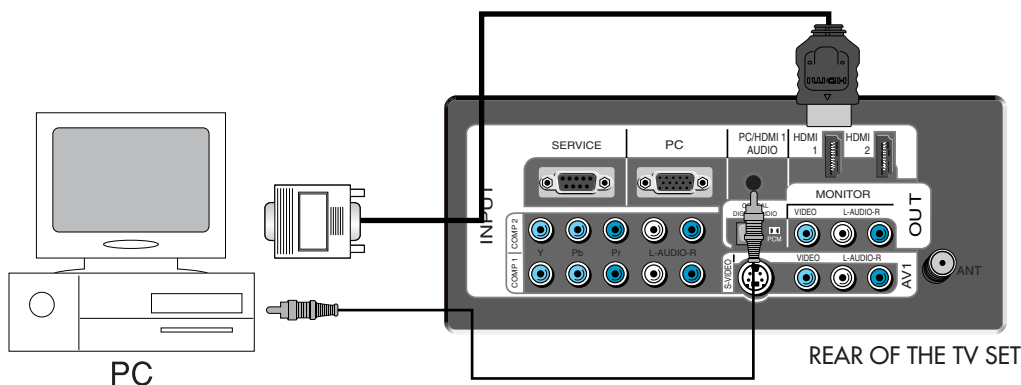
When connecting with PC(D-Sub) cable.

1. Adjust PC resolution to available resolution in LCD TV.
2. Connect the PC and TV set using the D-Sub and Audio cable like below the picture.
3. Turn on the PC and TV set.
4. Press "INPUT" and then You can see input menu. Select PC mode by pressing "▲▼" or "OK" key.



When connecting with a HDMI cable.

1. Adjust PC resolution to available resolution in LCD TV.
2. Connect the PC and TV set using the HDMI and Audio cable like below the picture.
3. Turn on the PC and TV set.
4. Press "INPUT" and then You can see input menu. Select PC mode by pressing "▲▼" or "OK" key.



Note : If the graphic card of the PC only support DVI signal, you must connect the Audio cable as shown above.

PC Connection

PC CONNECTION NOTES:

- 1) If there is a [Vertical Frequency] setting menu in the [Screen] Menu of the PC, adjust the frequency to 60Hz.
- 2) If the PC resolution is too high, it may be hard to read letters. Select a suitable resolution.
- 3) HDMI input port receives only Digital Signal.
- 4) Depending on the graphic card when you plug & unplug the HDMI connection, the screen may not display correctly.
Restart the computer if this happens.

Note :

1. When you connect with component, PC (D-Sub), and HDMI, you must check the input resolution of external devices.
2. So if this mode is used at PC mode, the screen can be enlarged.

USB Connection

USB CONNECTION NOTES:

Only a USB mass storage device is recognizable.

If the USB storage device is connected through a USB hub, the device is not recognizable.

A USB storage device using an automatic recognition program may not be recognized.

A USB storage device which uses its own driver may not be recognized.

The recognition speed of a USB storage device may depend on each device.

Please do not turn off the TV or unplug the USB device when the connected USB storage device is working. When such device is suddenly separated or unplugged, the stored files or the USB storage device may be damaged.

Please do not connect the USB storage device which was artificially maneuvered on the PC. The device may cause the product to malfunction or fail to be played. Never forget to use only a USB storage device which has normal music files or image files.

Please use only a USB storage device which was formatted as a FAT or NTFS file system provided with the Windows operating system. In case of a storage device formatted as a different utility program which is not supported by Windows, it may not be recognized.

Please connect power to a USB storage device which requires an external power supply. If not, the device may not be recognized.

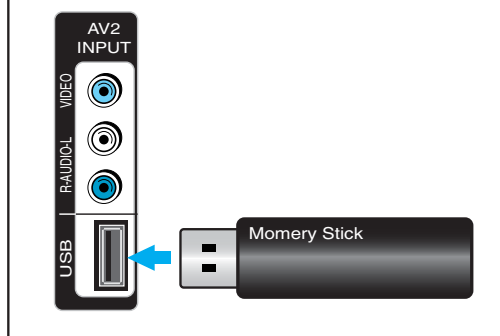
Please connect a USB storage device with cable is offered by USB maker. If connected with cable is not offered by USB maker or an excessively long cable, the device may not be recognized.

Some USB storage devices may not be supported or operated smoothly.

File alignment method of USB storage device is similar to Window XP and filename can recognize up to 16 English characters.

Please backup important files because data on USB device may be damaged. Data management is consumer's responsibility and as a result, the manufacturer does not cover data damage.

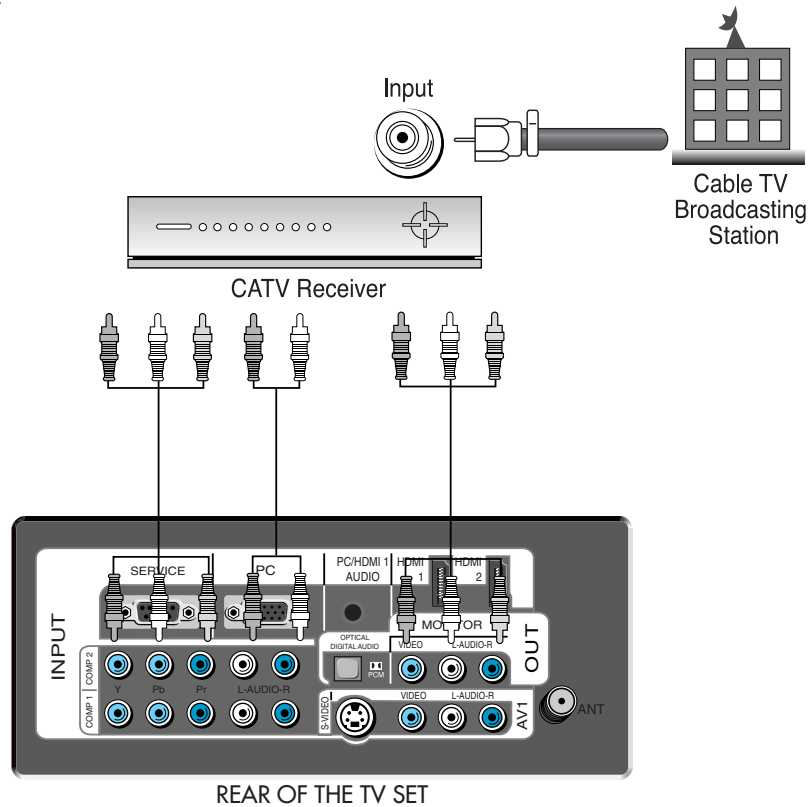
- Connect the USB device to the USB in jacks on the side of TV.



Cable TV Broadcasting Connection

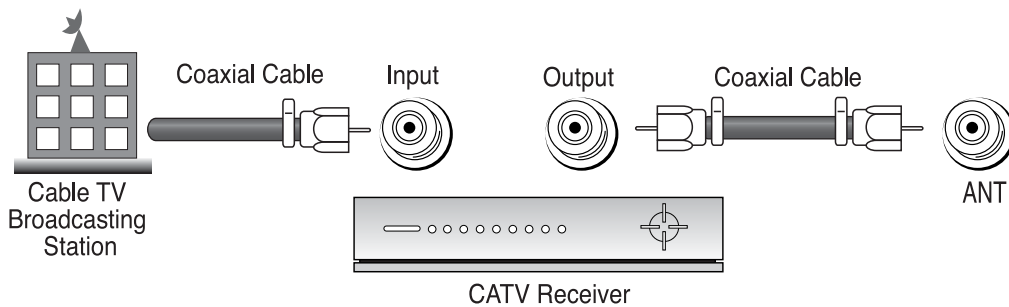
External Input Connection Source

Watching cable television is only possible after you have subscribed to the local broadcasting company and installed a cable receiver. You may make the connection to either the Component input, Video1 input or Video2 input.



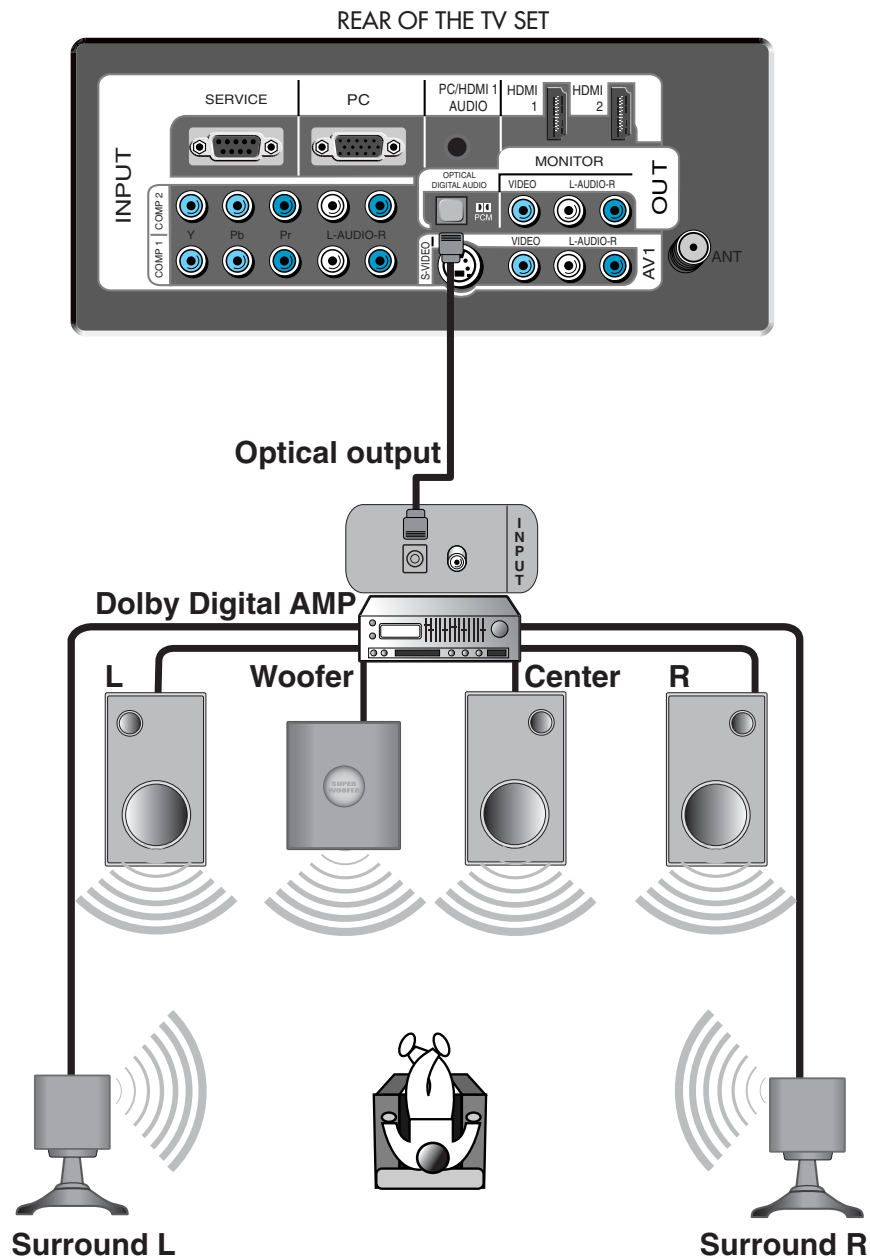
Antenna Input Connection

Watching cable television is only possible after you have subscribed to the local broadcasting company and installed a cable receiver.



Connect with the Dolby Digital AMP.

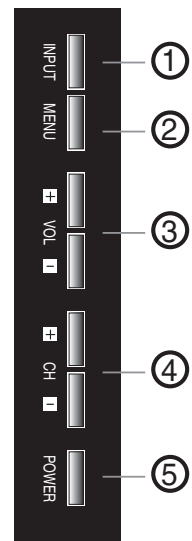
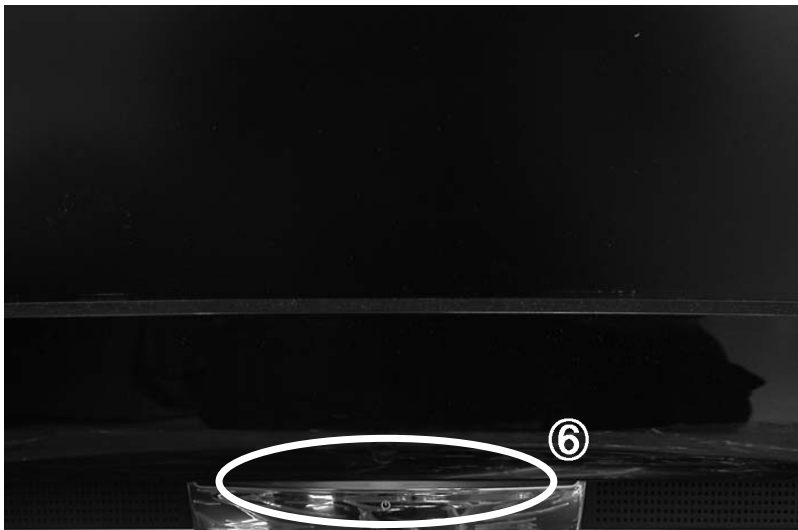
If you connect the optical output to a Dolby digital AMP, you can listen to better sound.



Name of Each Part

Front Panel and Side

Buttons on the TV set have the same functions as those of the remote control.



SIDE OF THE TV SET

Control Key Buttons.

- ① **INPUT Buttons** : Each time you press this button, the TV will cycle through:
AIR/CABLE → AV1 → AV2 → Component1 → Component2 → HDMI1 → HDMI2 → PC
- ② **MENU Button** : Use this button to enter and exit the MENU.
- ③ **VOL Buttons** : Use this buttons to change your TV's volume or to move cursor in the menu.
- ④ **CH Buttons** : Use this buttons to change channels on your TV or to move cursor in the menu.
- ⑤ **POWER Button** : Use this button to TV STAND-BY mode/TV ON mode.
- ⑥ **Remote control signal receiver**

The screen contains the remote control signal receiving window; therefore, point the remote control towards the screen when using it.

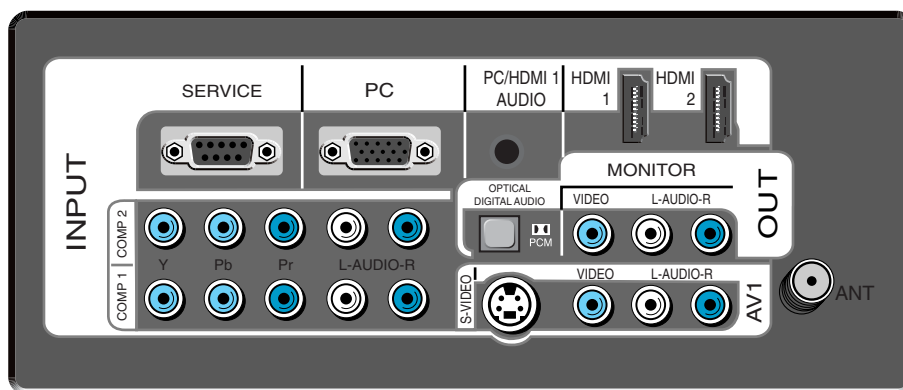
Stand-by <LED Indicator>

LED BLUE - Standby

LED OFF - SET ON

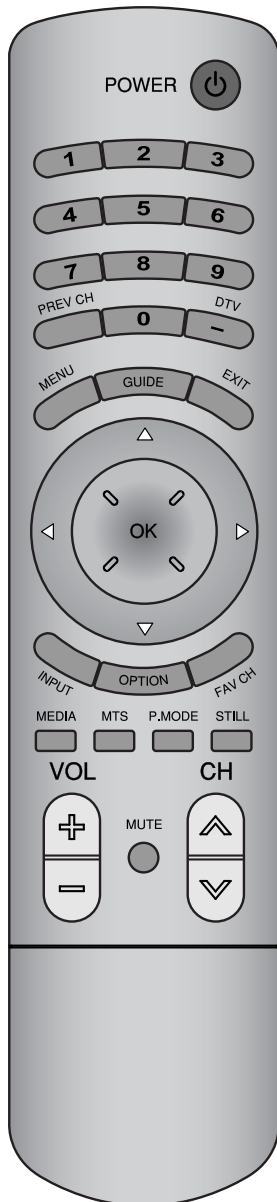
Name of Each Part

Rear of the TV set



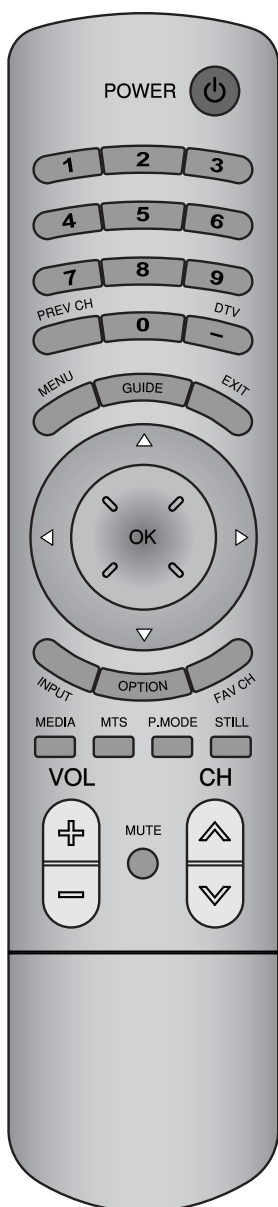
REAR OF THE TV SET

Functions of the remote control



- 1, **POWER** : Turns the TV on and off.
- 2, **NUMBER** : Press the numbers on this board; you can select CH directly in TV mode.
(EX: When you want to select CH10, you should press down "1", "0" and "OK" within 5second. If you only press down "1", after 5second, CH1 will be selected.)
- 3, **DTV(-)** : Used to enter a program number for multiple program channels such as 2-1, 2-2, etc.
4. **PREVIOUS CH** : Press this button, you can tune to the previous channel.
- 5, **EXIT** : Exit from the MENU.
- 6, **MENU** : Displays the main on-screen menu.
Picture, Sound, Channel, Feature, Time.
- 7, **GUIDE** : Access Electronic Program Guide (EPG). It works only in DTV mode.
- 8, **NAVIGATION KEY** : You can use Navigation Key to move in multi mode.
- 9, **FAVORITE CH** : Press to switch to your favorite channels.
- 10, **INPUT** : Each time you press this button, the TV will cycle Through: AIR/CABLE -> AV1/2 -> Comp.1/2 -> HDMI1/2 -> PC
- 11, **OPTION** : Use to quickly select frequently used functions.
- 12, **STILL** : Press this button to freeze the picture.
- 13, **MEDIA** : To enter the MEDIA HOME (It can be used only when USB is connected to the TV)
- 14, **P.MODE** : Picture modes change as follows:
Normal -> User -> Dynamic -> Cinema -> Normal.
- 15, **MTS** : In Analog, you can select sound mode (Mono/Stereo/SAP). In Digital, you can select audio tracks (EX:English/Spanish/French).
- 16, **CH** : Press to switch to your memorized channels in sequence.
- 17, **VOL** : Adjust the volume.
- 18, **MUTE** : Press this button, and the sound goes off. Press again, and the sound returns.

Battery Installation



Inserting Batteries into the Remote Control Unit

To install the batteries, turn the remote control over and open the battery compartment. Insert the batteries (Two 1.5V, type AAA). Make sure that the polarity matches with the (+) and (-) marks inside of the battery compartment.

Note: To avoid damage from possible battery leakage, remove the batteries if you do not plan to use the remote control handset for an extended period of time.



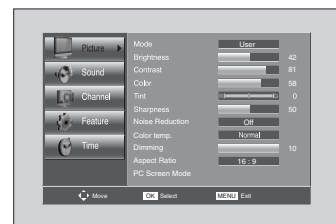
Basic Menu

Basic Menu

- The basic menu appears on the screen if you press the menu button of the remote control.
- There are 5 items Picture, Sound, Channel, Features, and Time in the basic menu.
- Each item has sub-items under it. If the desired item is selected, the relevant sub-items are displayed upward.

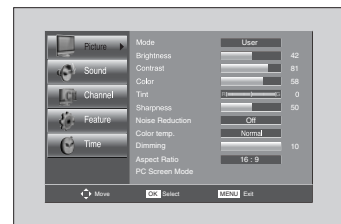
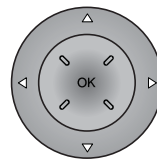
1. Press the "MENU" button.

- The main menu appears if you press the "MENU" button.



2. Press the "▲▼" button.

- You may setup according to the directions on the screen after selecting the desired item by pressing the "▲▼" button.
- If the setup is completed, exit from the menu by pressing the "MENU" button.



Adjusts Picture Mode

- Mode(Normal, User, Dynamic, Cinema), Brightness, Contrast, Color, Tint (NTSC only), Sharpness, Noise Reduction, Color Temp, Dimming, Aspect Ratio and PC Screen Mode (Only PC Mode).



Adjusts Sound Mode

- Effect(Off,Dynamic Bass,ST Voice), Mode(Normal,Movie,Music,News,User), Equalizer,Balance, Auto Volume Control, Digital Volume and Speaker



Adjusts Channel Mode

- Auto Search, Antenna(Air/Cable) Edit Channel, Fine Tune, Singnal Strength



Adjusts Feature Mode

- Parental Control, Language(English, Espanol, Francais), Caption, Menu Opacity, MGDI Demonstration, Initialize



Adjusts Time Mode

- Clock Mode, Current Time Set, Time Zone, DST, Sleep Timer, On Timer, Off Timer

To Watch TV

Power, Number, DTV, OK, Mute, Input, ◀▶, ▼▲

- Buttons with same name in the main body performs the same function.

Press the "POWER" button on TV set or Remote control.

Note:

- The buttons of the remote control and the main body operate only when AC power turn on.
- You must pull out the plug of TV set to shut off the AC Power

When pressing the Digit Key button

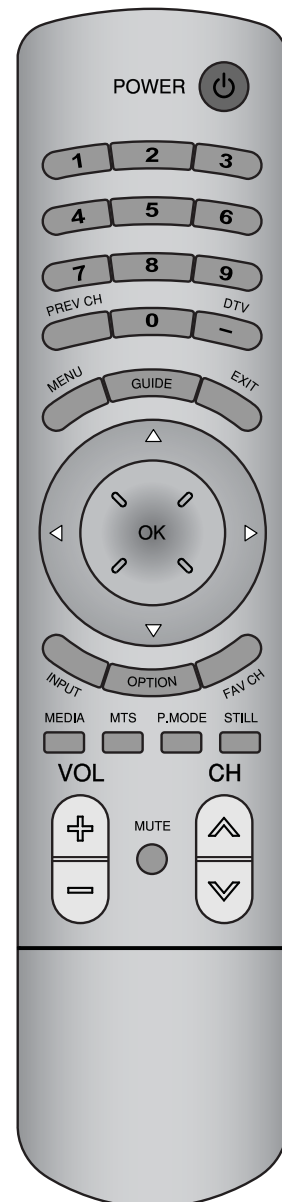
- Press the "OK" button if using the number button for channel selection. For example, to watch the No.9 channel, Press the number button "9" and the "OK" button. If pressing only number "9" button, it takes a longer time to select the channel.
- To watch the No.9-1 channel, Press the button "9", "-", "1" and "OK" in sequence.

To turn sound off

- Press the "MUTE" button.
- No sound is heard if "MUTE" is displayed on the screen.
- Sound is heard again if you press the "MUTE" button once again.

Check of TV operation status

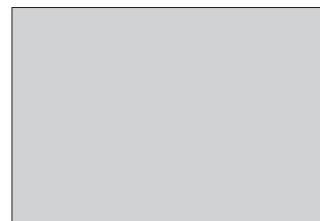
- Pressing the "OK" button, the status of channel or clock broadcasting being currently watched or entry status of video component is displayed on the screen.



To Watch TV

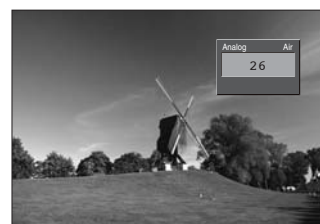
1. Press the "POWER" button on TV set or remote control.

- The Stand-by LED lamp turns on in blue color.
- Press the "POWER" button on the TV set or remote control.
- The Stand By LED lamp on the front panel begins to flicker in blue color and the TV turns on.



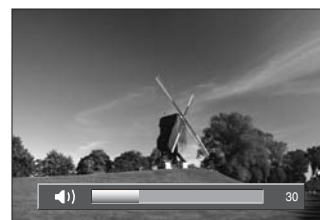
2. Press the "∨CH∧" button.

- Select the desired program by pressing the "∨CH∧" button or the number buttons.



3. Adjust volume.

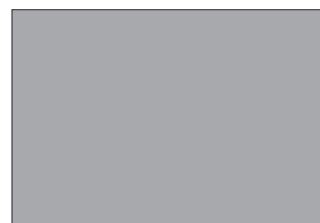
- Sound reduces by pressing the "VOL-" button.
- Sound increases by pressing the "+VOL" button.



Note : Sound mutes by pressing the "MUTE" button.

4. Press the "POWER" button of right side of the set or Remote control for turning the TV off.

- TV turns off and the power lamp changes to blue color.



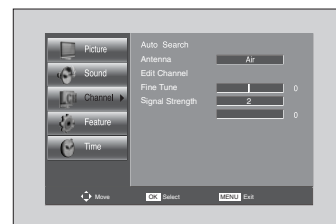
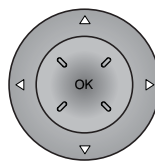
Setting Up TV Stations

Auto Search to find Channels

- All stations that can be received are stored by this method. It is recommended that you use Auto tuning during installation of this set.

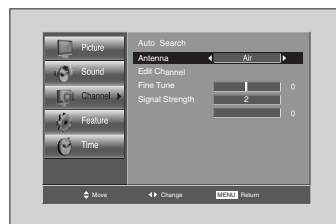
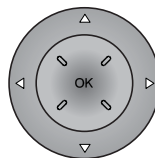
1. Press the "MENU" button to select the Channel menu.

- Move the selection bar to the Channel menu with "▲▼" buttons.



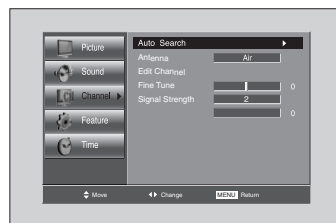
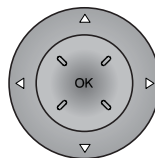
2. Select the "Antenna"

- Place the selection bar on Antenna and select Air or Cable with "◀▶" buttons.

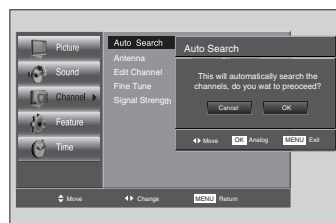
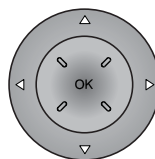


3. Select the "Auto Search".

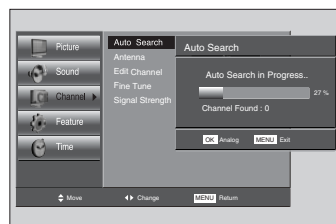
- Place the selection bar on Auto Search and press the "◀▶" button.



4. Select the "OK" selection bar pressing by "◀▶" button.



5. Wait until the Channel menu appears.

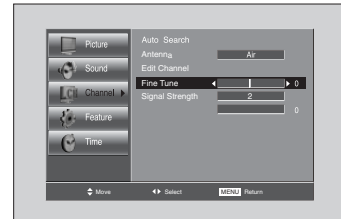
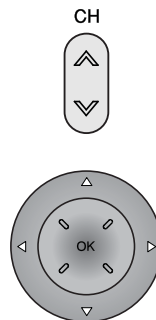


Setting Up TV Stations

Fine tune

1. Searching for channel finely

- Select a Channel number you want to tune finely with the "∨CH∧" buttons.
- Press the "MENU" button and move to the Channel menu.
- Move the selection bar to the Fine tune with "▲▼" buttons.
- Press the "◀▶" buttons to adjust the fine tuning.



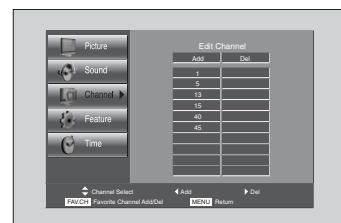
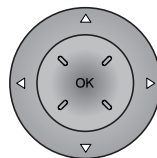
Note:

- If you are unable to get a good picture or Sound because of a poor broadcasting signal, adjustment of Frequency might improve it.

Edit Channel

1. Adding the Channel

- Select a Channel number you want to add with the "NUMBER" buttons.
- Press MENU Button. Select Channel by pressing "▲▼".
- Move to Edit Channel. Then select "ADD/DEL" by pressing "◀▶".



2. Deleting the Channel

- Press MENU Button. Select Channel by pressing "▲▼".
- Move to Edit Channel. Then select "ADD/DEL" by pressing "◀▶".

