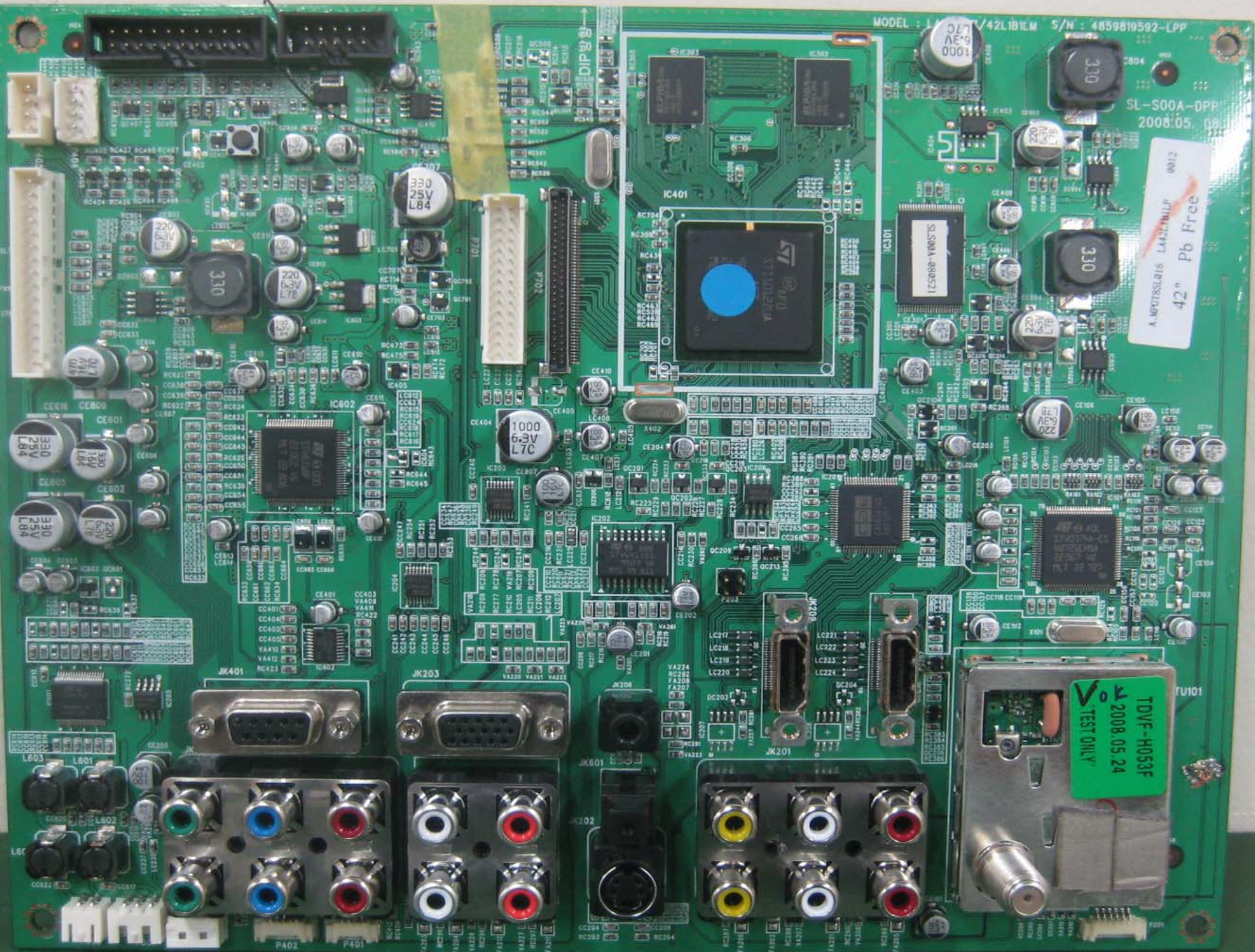


MODEL : L.../42L181LM S/N : 4859819592-LPP

SL-S00A-DPP  
2008.05.08

V-REFRESH 918520ALP AN12  
42" Pb Free





FEL-3237VW  
A0807

RoHS  
3 & 94V-0

COLD HOT



220n K 275V-  
4380 MHP X2



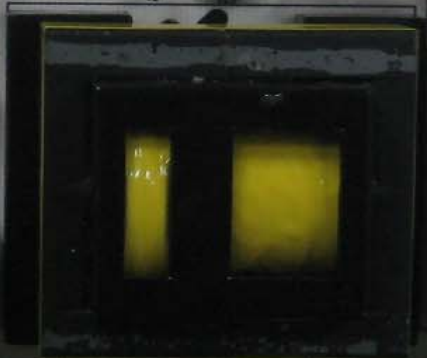
220n K 275V-  
4380 MHP X2



NO FREE SOLDERING

CAUTION  
FOR CONTINUE PROTECTION AGAINST  
RISK OF FIRE, REPLACE ONLY WITH  
SAME TYPE AND RATING OF FUSE(S)

ABSHE00

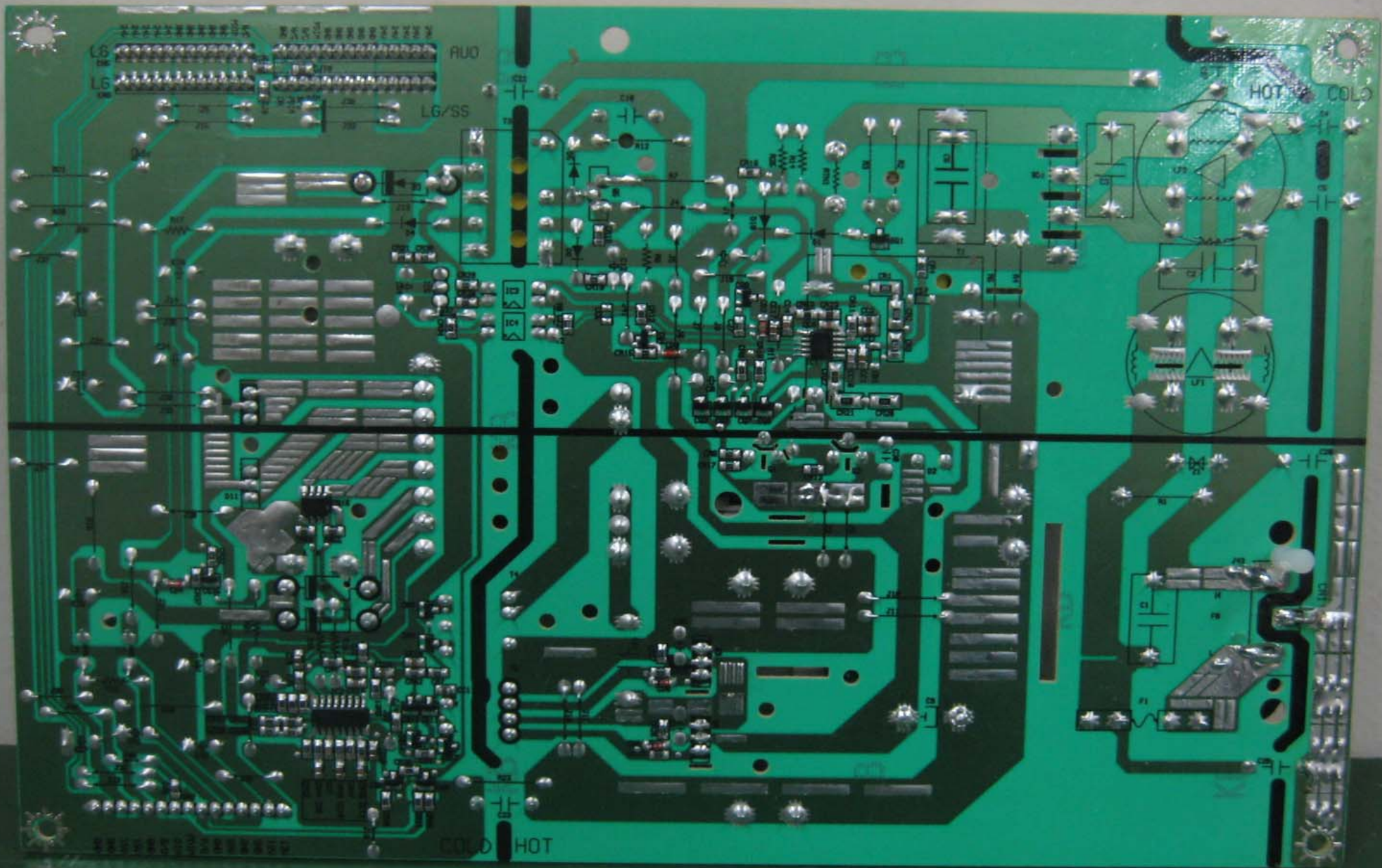


FEL-17LD  
BASCO5L



HOT COLD

12V 08 09 10 11 12 13 14 15 16 17 18 19 20 21 22 23 24 25 26 27 28 29 30 31 32 33 34 35 36 37 38 39 40 41 42 43 44 45 46 47 48 49 50 51 52 53 54 55 56 57 58 59 60 61 62 63 64 65 66 67 68 69 70 71 72 73 74 75 76 77 78 79 80 81 82 83 84 85 86 87 88 89 90 91 92 93 94 95 96 97 98 99 100



L6

L6

AUO

RG/SS

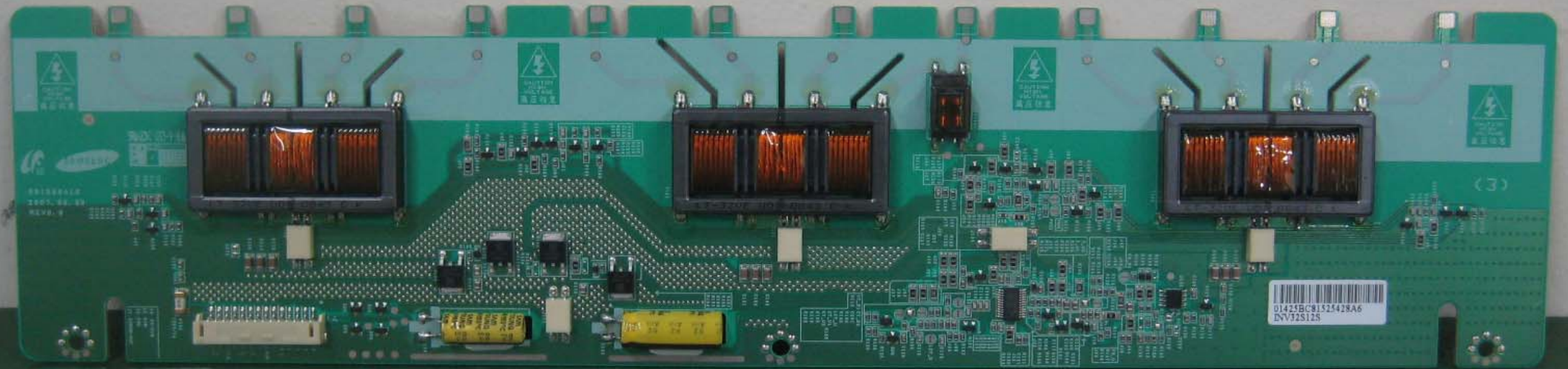
HOT

COLO

COLO

HOT





CAUTION  
HOT SURFACE  
高温注意

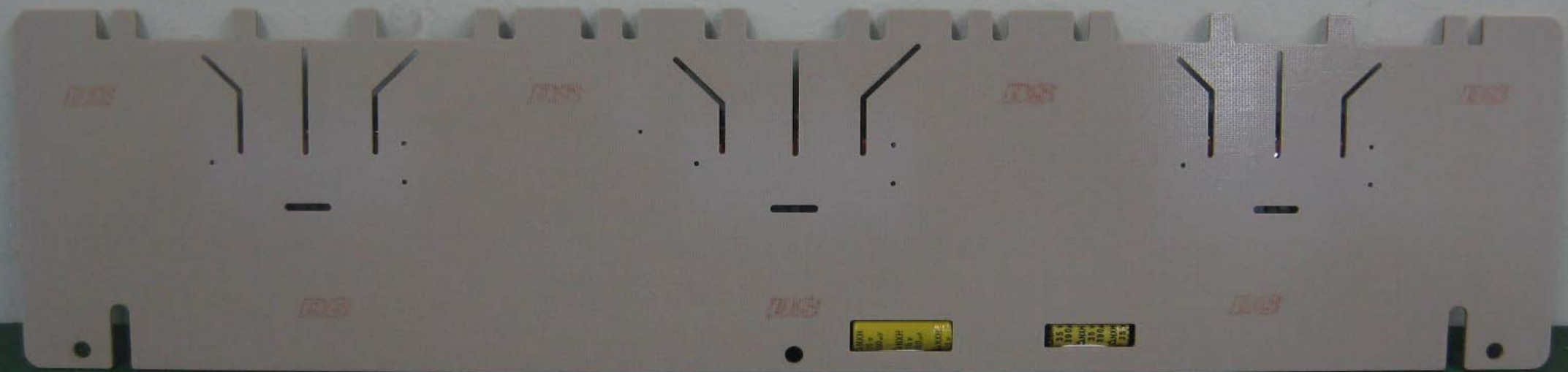
CAUTION  
HOT SURFACE  
高温注意

CAUTION  
HOT SURFACE  
高温注意

(3)

01415BC81521428A6  
INV72S128

REV. 1



R32

R33

R34

R35

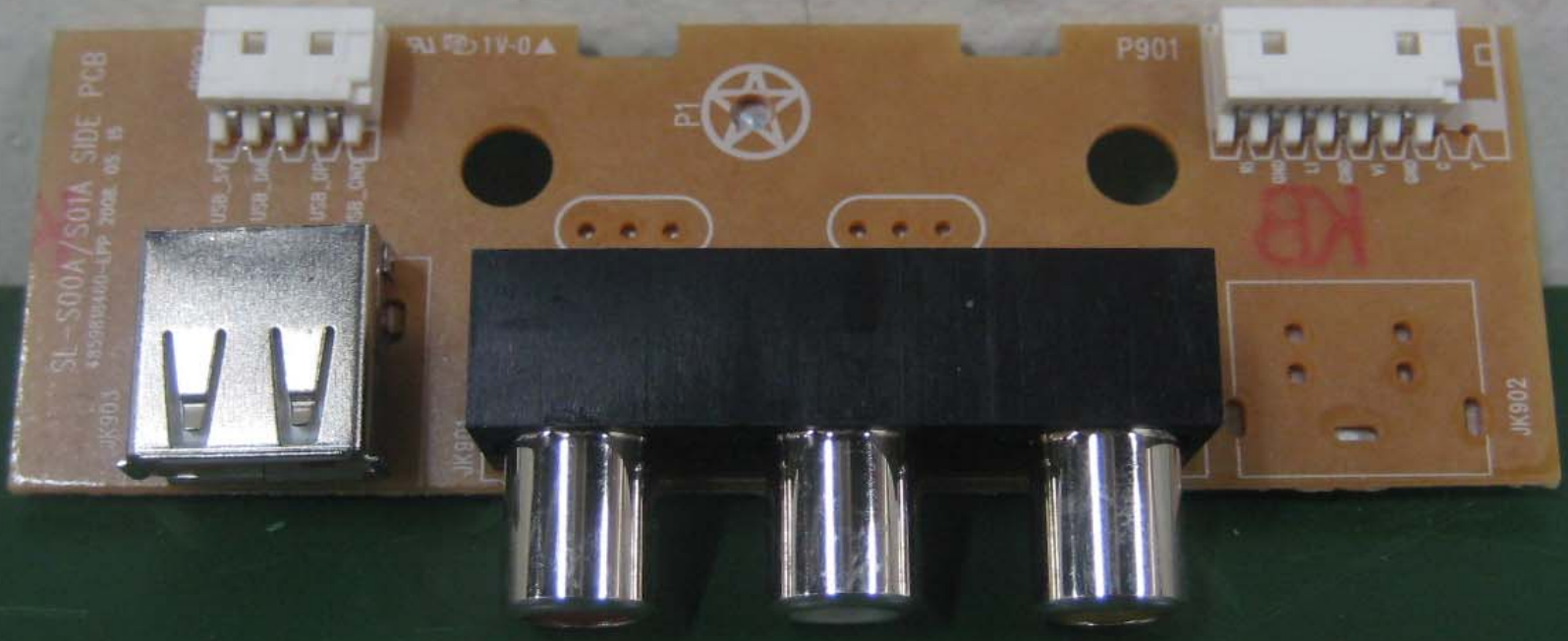
R36

R37

R38

1000V  
BY  
1000V  
BY  
1000V  
BY

1000V  
BY  
1000V  
BY  
1000V  
BY



SL-S00A/S01A SIDE PCB  
435099460-LTP 2008.05.15

JK903

USB\_V1  
USB\_D+  
USB\_D-  
GND

1V-0

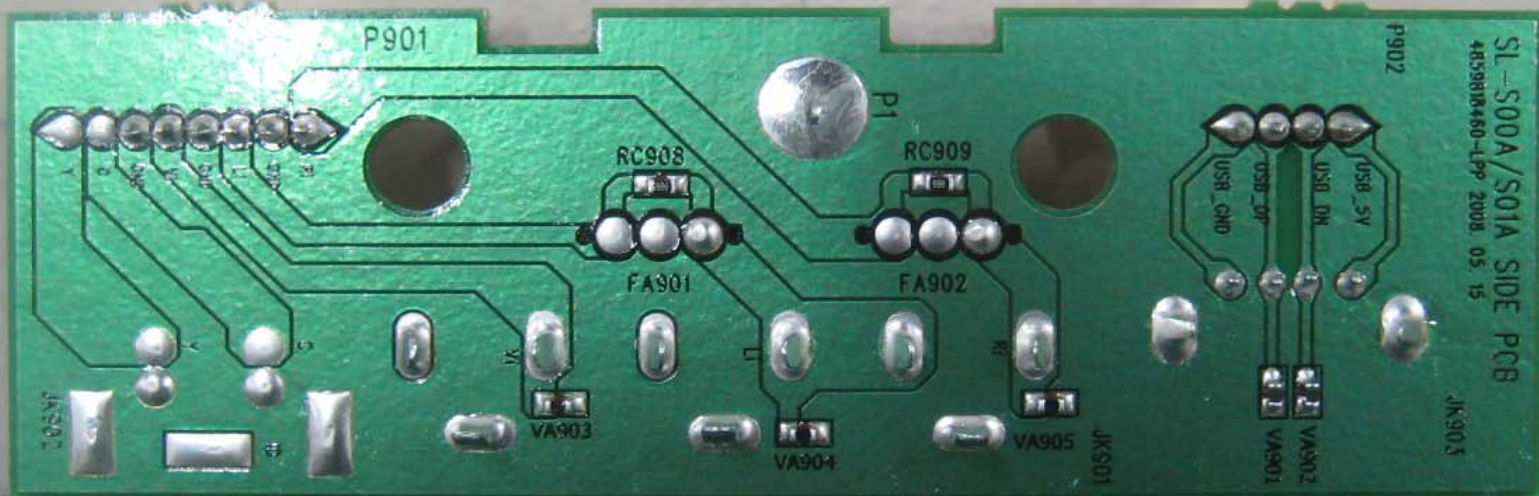
P1

P901

R1  
Q1  
L1  
D1  
V1  
S1  
C1  
T1

KB

JK902



SL-S00A/S01A SIDE PCB  
48390R460-LPP 2008.05.15

P902

JK903

USB\_5V  
USB\_DM  
USB\_DP  
USB\_GND

VA902  
VA901

P1

RC909

FA902

VA905

JK901

RC908

FA901

VA904

P901

1  
2  
3  
4  
5  
6  
7

JK902



P803

PWR



SW907

CH-



SW906

32/37/42\_L1/L2\_DPP KEY PCB  
2008. 03. 07

CH+



SW905

VOL-



SW901

VOL+



SW902

MENU



SW903

AV



SW904

1V-0▲



32/37/42\_L1/L2\_DPP KEY PCB  
2008. 03. 07

P903

K1  
G  
K2  
G

AV

MENU

VOL+

VOL-

CH+

CH-

PWR

SW904

SW903

SW902

SW901

SW905

SW906

SW907

RC904

RC903

RC902

RC901

RC905

RC906

RC907

320AB02CF2LV0.3

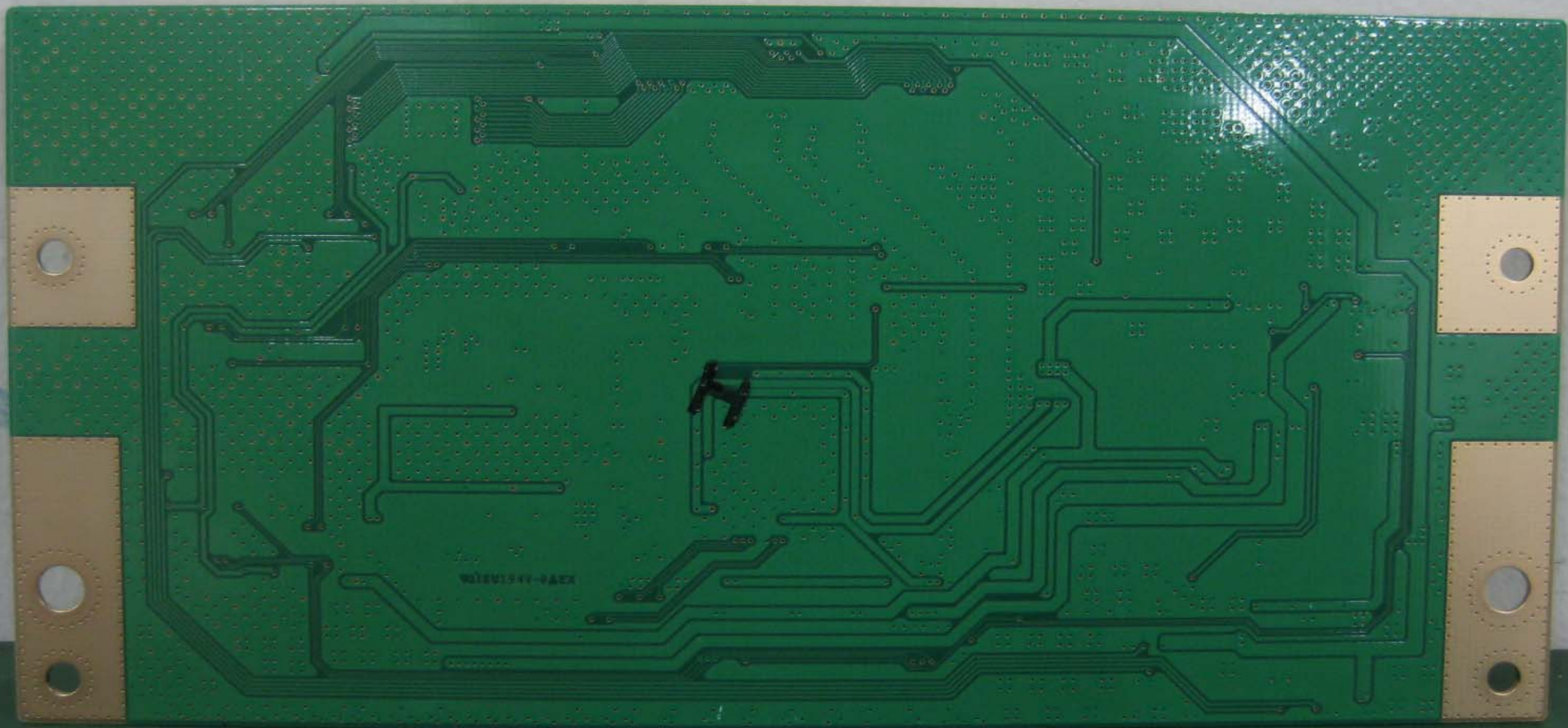
J2311H80002L  
016941

PLUTO  
LMX4122T0  
8-NOP15M1  
0735

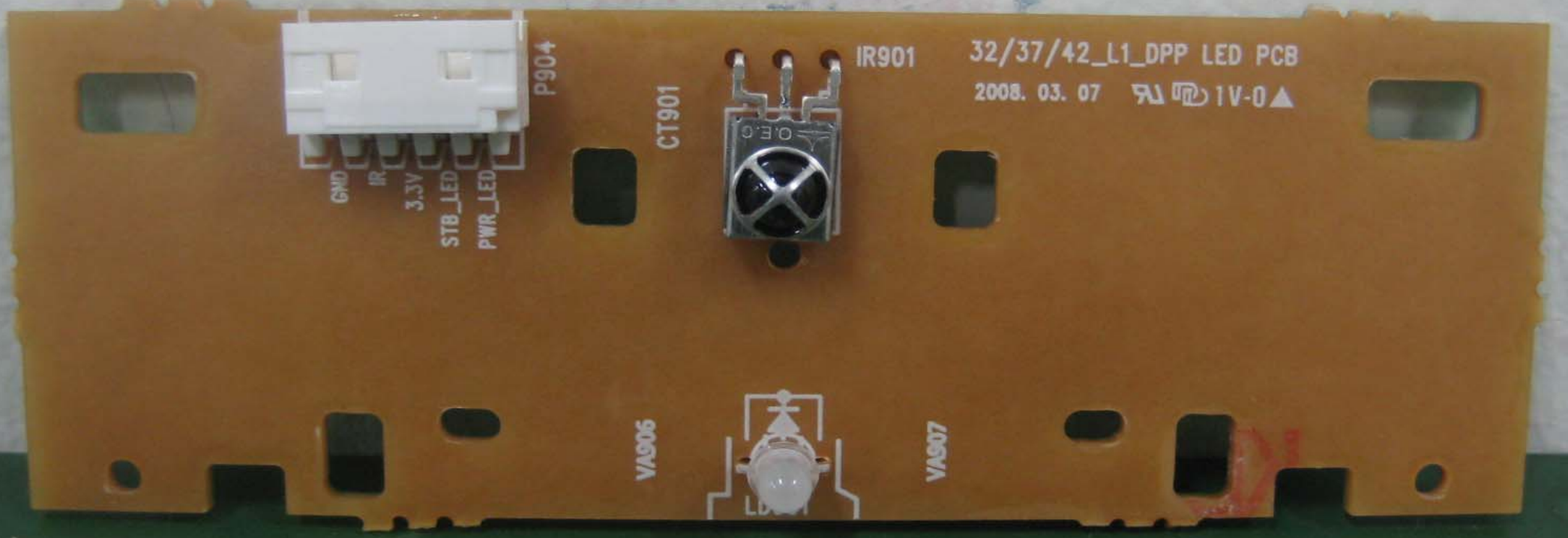
EM636165TS-6G  
M081412RNF201.11L  
EtronTech



0003M 12







GND  
IR  
3.3V  
STB\_LED  
PWR\_LED

P904

CT901

IR901

32/37/42\_L1\_DPP LED PCB  
2008. 03. 07

VA906

VA907

32/37/42\_L1\_DPP LED PCB  
2008. 03. 07

IR901 3.3V CT901

P904

CJ7m

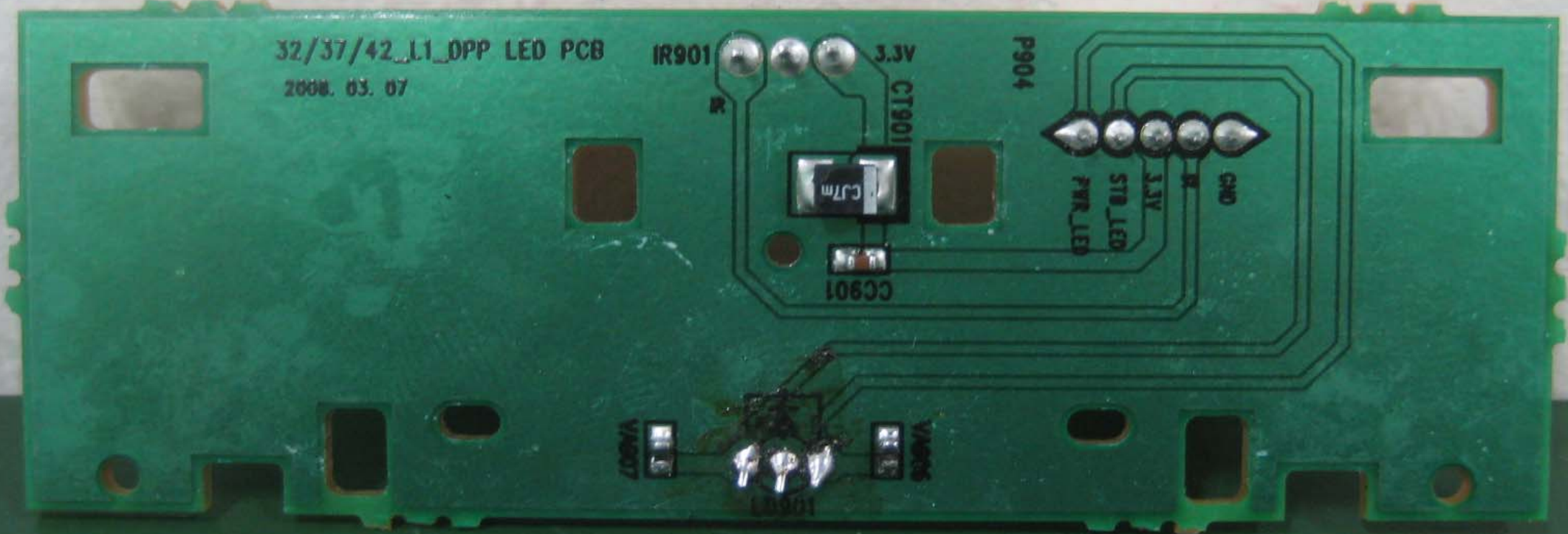
CG901

GND  
3.3V  
STD\_LED  
PWR\_LED

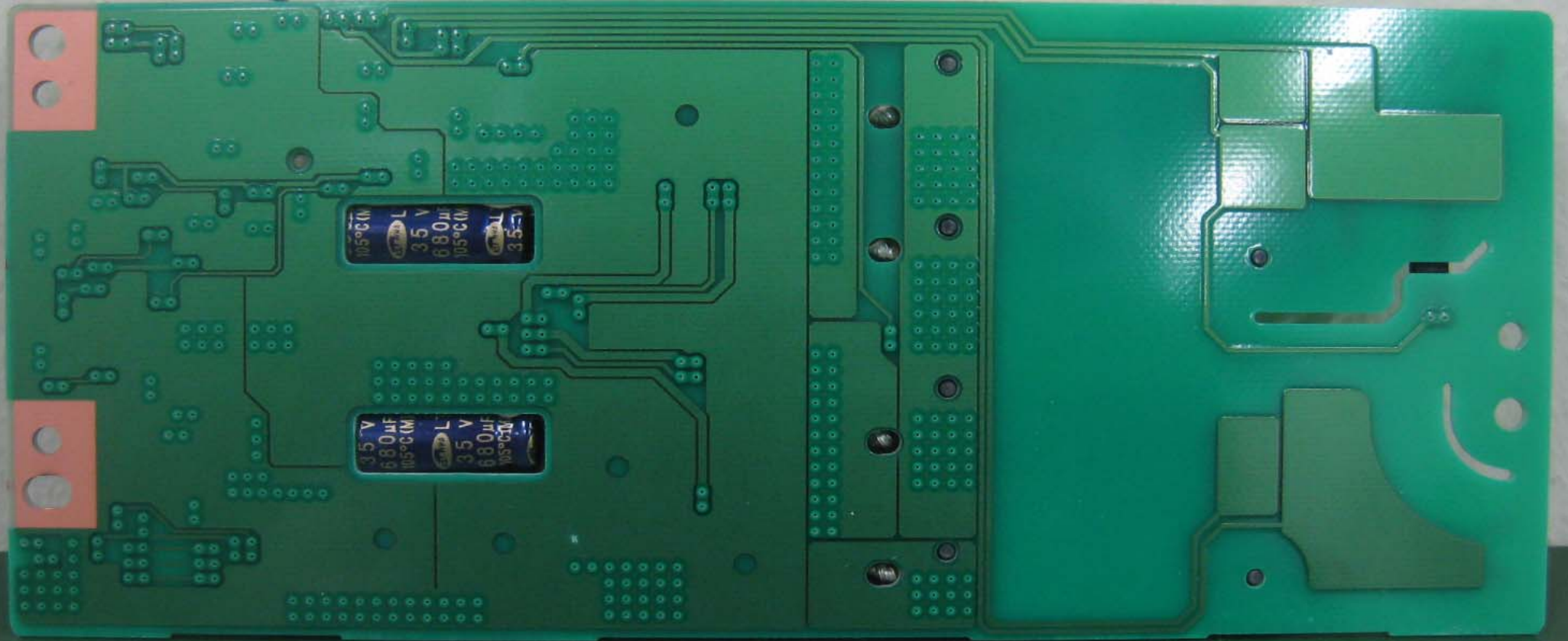
VAD07

IR901

VAD06







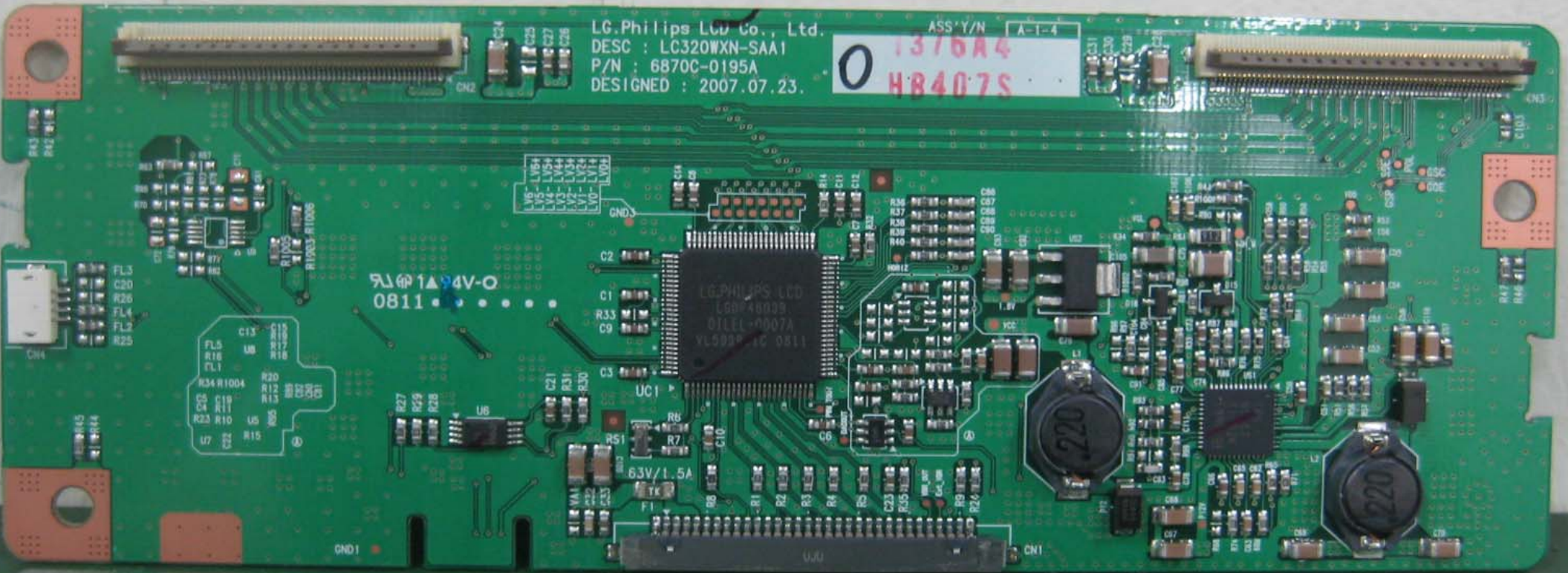
LG.Philips LCD Co., Ltd.  
DESC : LC320WXN-SAA1  
P/N : 6870C-0195A  
DESIGNED : 2007.07.23.

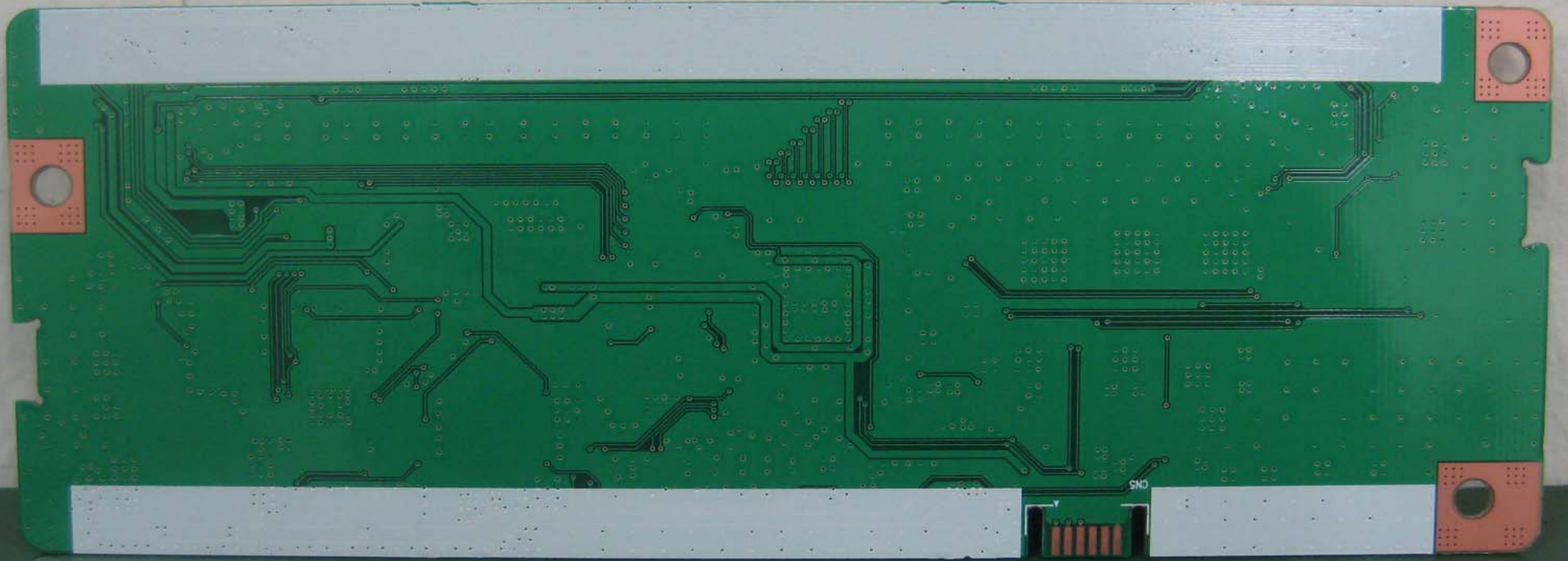
ASS'Y/N A-1-4  
0 1376A4  
HB407S

93011A 94V-0  
0811

LG.PHILIPS.LCD  
L60-4000B  
01LEL-0007A  
YL5900 IC 0811

63V/1.5A







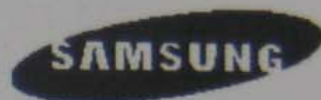
0816  
P&Z  
LTA320AB02  
8M80GH3HK DOT

0816  
P&Z  
LTA320AB02  
8M80GH3HK DOT





T  
C **RoHS**®  
US



**LTA320AB02**

**0816**

**P8AE**



**8M8D0H3H0K**

**001**

MADE IN KOREA

LC320WXN  
(SA)(C1)

RoHS Verified  
Factory ID:LPLNJ



32084CH615796 621B



**LG.PHILIPS LCD**



This product may be covered by one or more of the following  
US Patent Nos. 5,041,823 ; 5,061,920 ; 5,280,371 ; 5,835,139

**MADE IN CHINA**

TU10

TDVF-H053F  
2008.05.24  
"TEST ONLY"

