



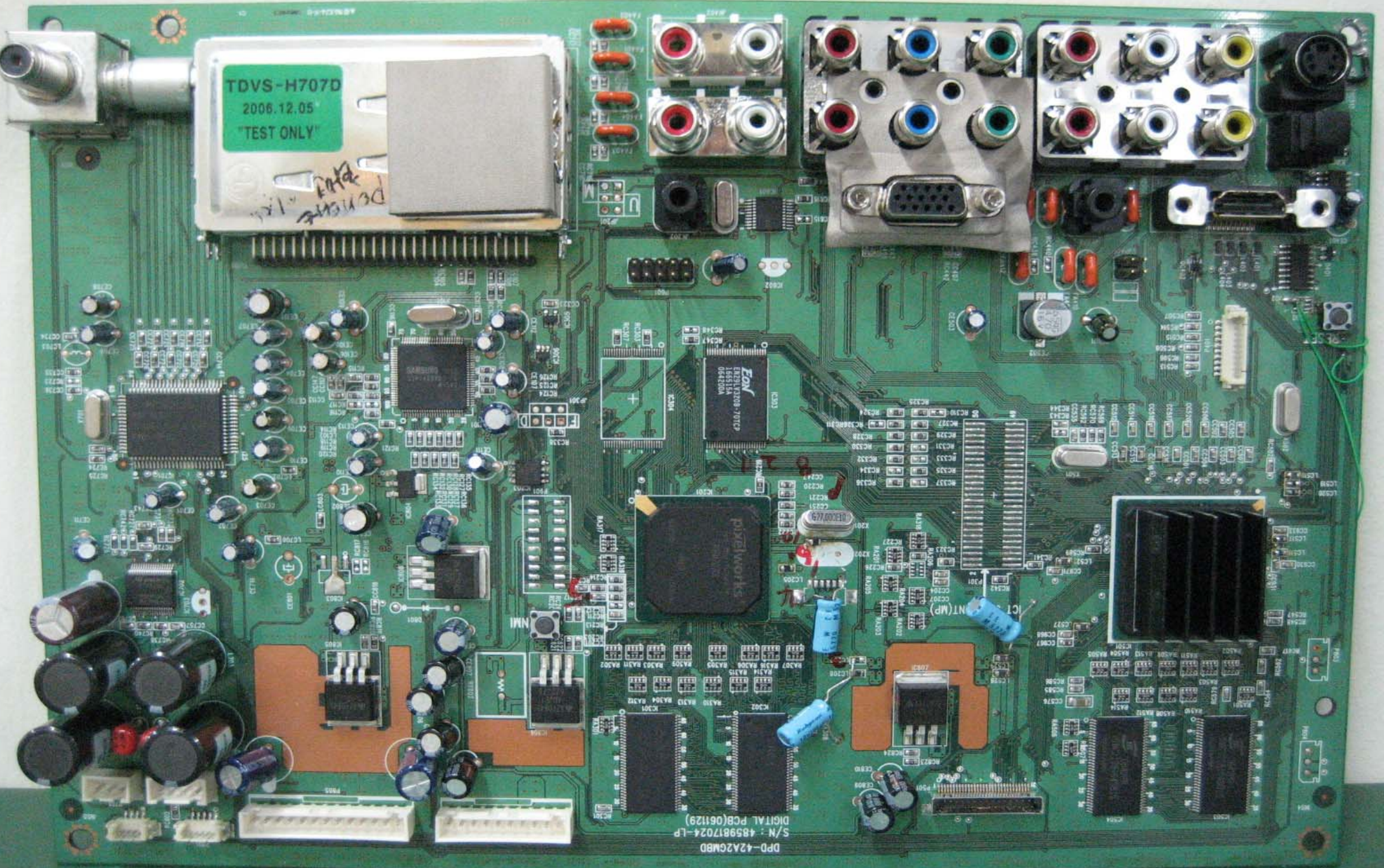
TDVS-H707D  
2006.12.05  
"TEST ONLY"

*Handwritten:* PERMITS  
1/1

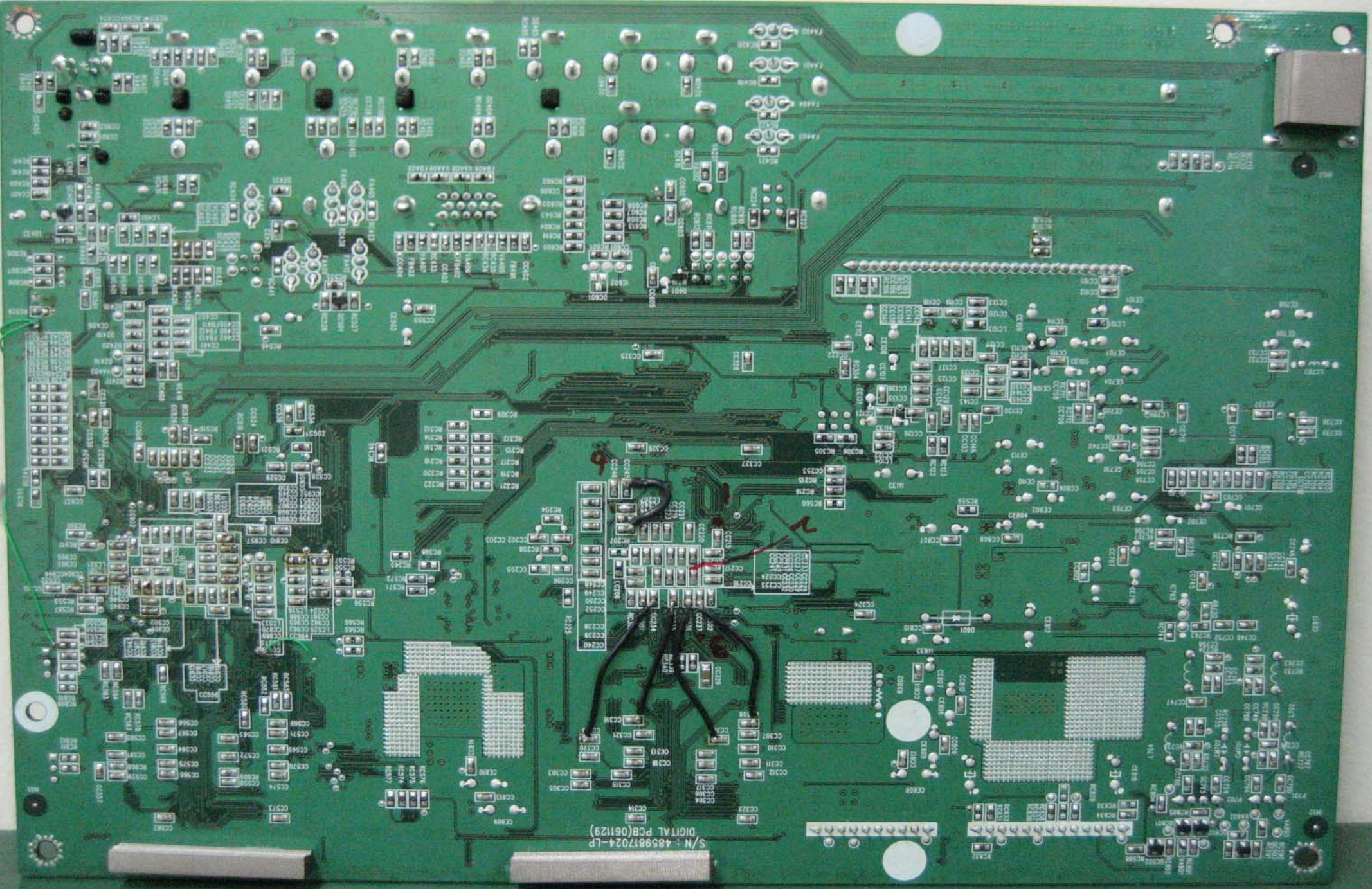
DPD-42A2GM8D  
S/N : 4859817024-LP  
DIGITAL PCB(061129)

**EON**  
ENCIPHERATOR-TOTP  
0614280A

**pixelworks**

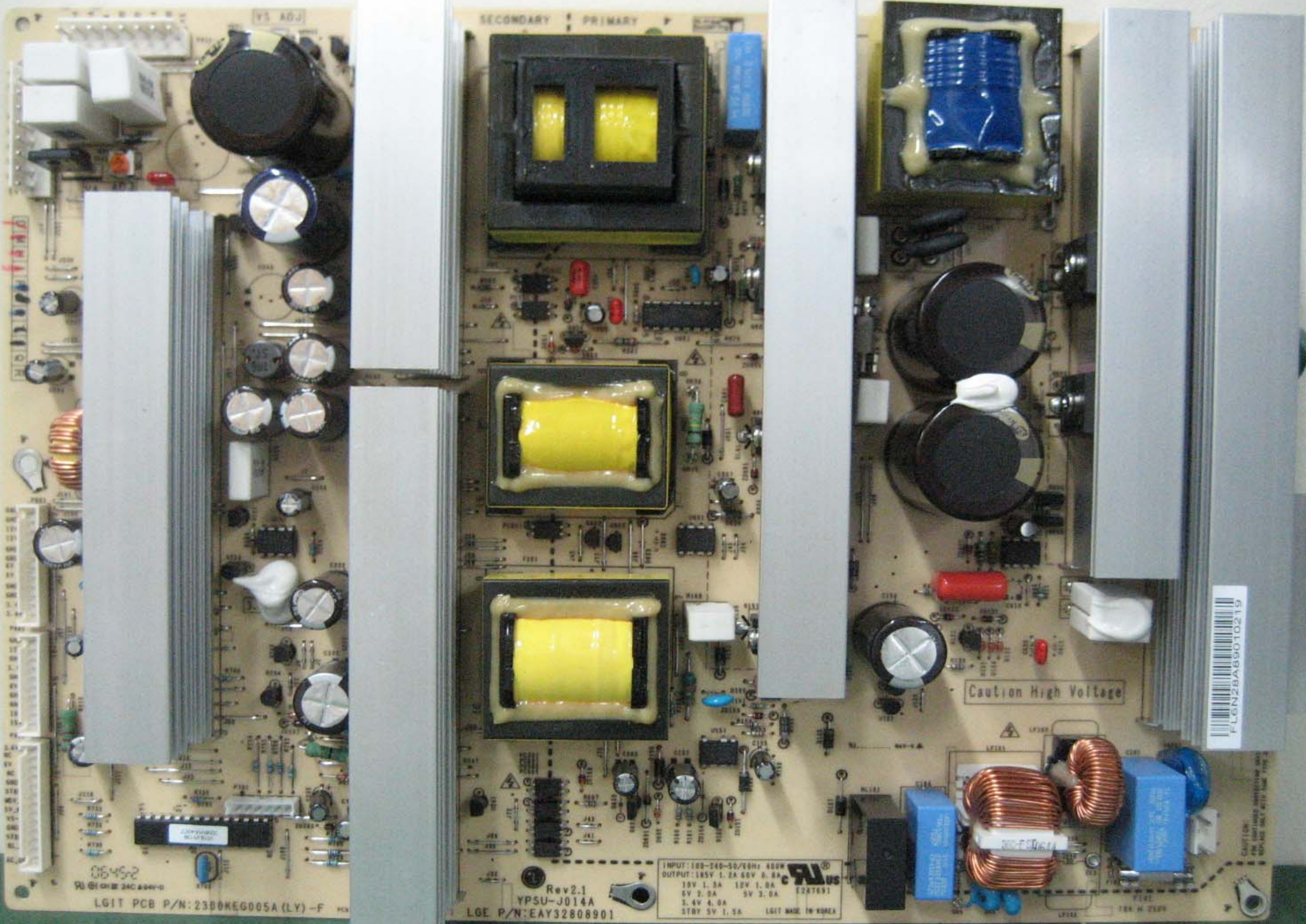






S/N : 4859817024-LP  
DIGITAL PCB(061129)





V5 ADJ

SECONDARY PRIMARY

Caution High Voltage

0645-2  
LGIT PCB P/N: 2300KEG005A (LY)-F

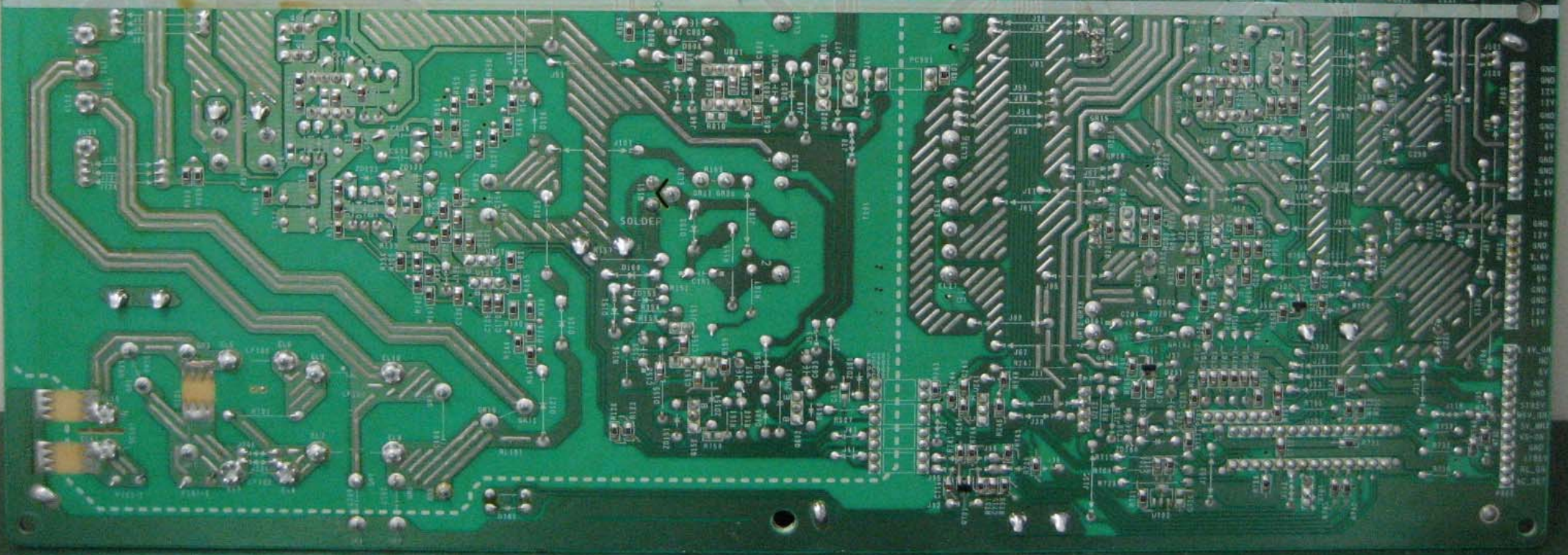
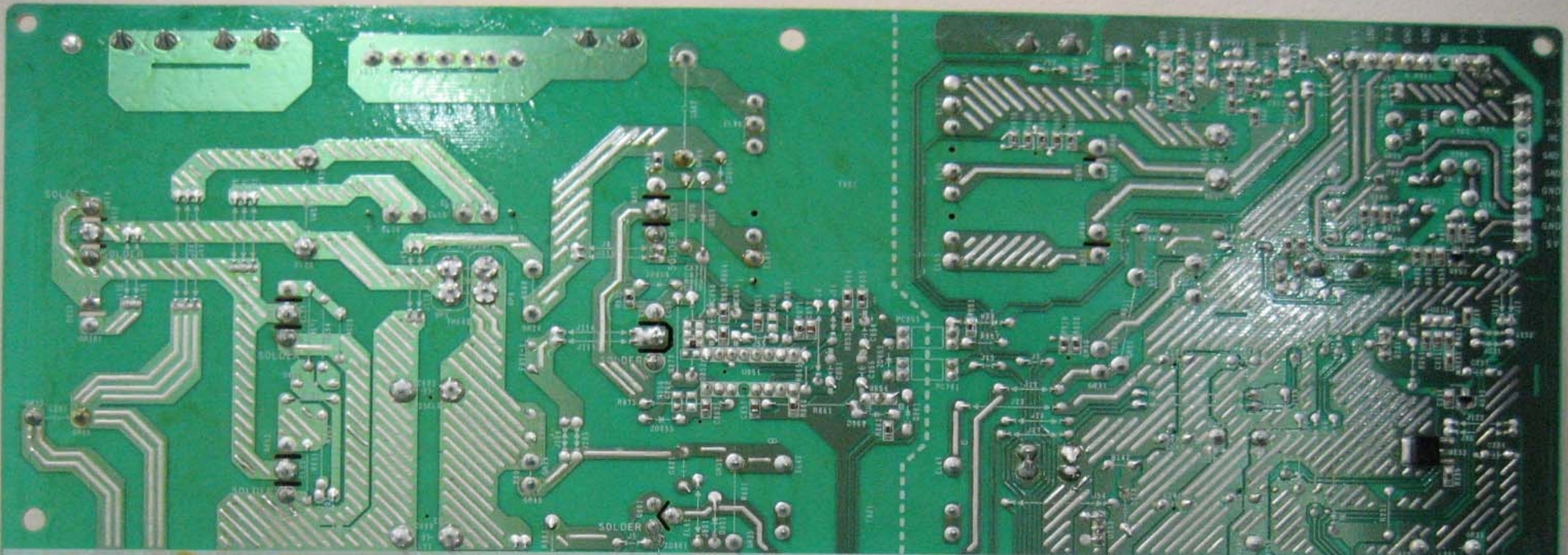
Rev.2.1  
YPSU-J014A  
LGE P/N: EAY32808901

INPUT: 100-240-50/60Hz 400W  
OUTPUT: 185V 1.2A 60V 0.8A  
18V 1.5A 12V 1.0A E247691  
5V 2.0A 5V 3.0A  
3.4V 4.0A  
5TRV 5V 1.5A LGIT MADE IN KOREA

FL6N28A8900T0219

CAUTION  
HIGH VOLTAGE  
DO NOT TOUCH  
ANY PART OF THE UNIT







DOWNLOAD SERIAL

+5V

+3.3V LVDS

+3.3V

+1.8V

06 48 B-2

88710CH89A  
CTRL  
KPA206CA009135

LGE PDP 061121 RA16  
BOARD: 42X4 C1BL  
PARTNO: 68700QH007A  
REV: 1.1  
LOCNO: 1XX

WARNING



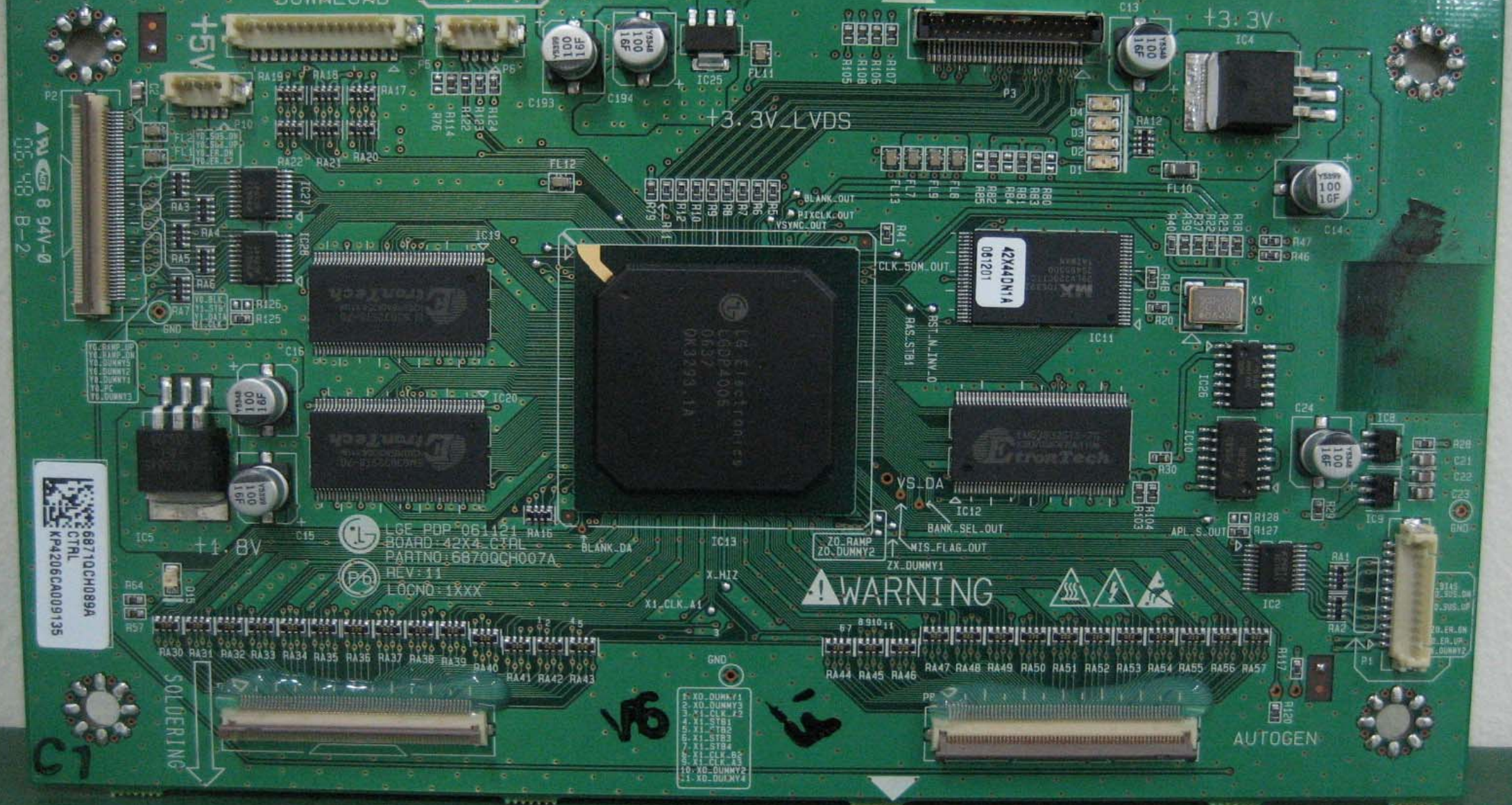
AUTOGEN

X0\_DUMMY1  
X0\_DUMMY3  
X1\_CLK\_F2  
X1\_STB1  
X1\_TB2  
X1\_STB3  
X1\_STB4  
X1\_CLK\_B2  
X1\_CLK\_B3  
X0\_DUMMY2  
X1\_DUMMY4

SOLDERING

C1

V6







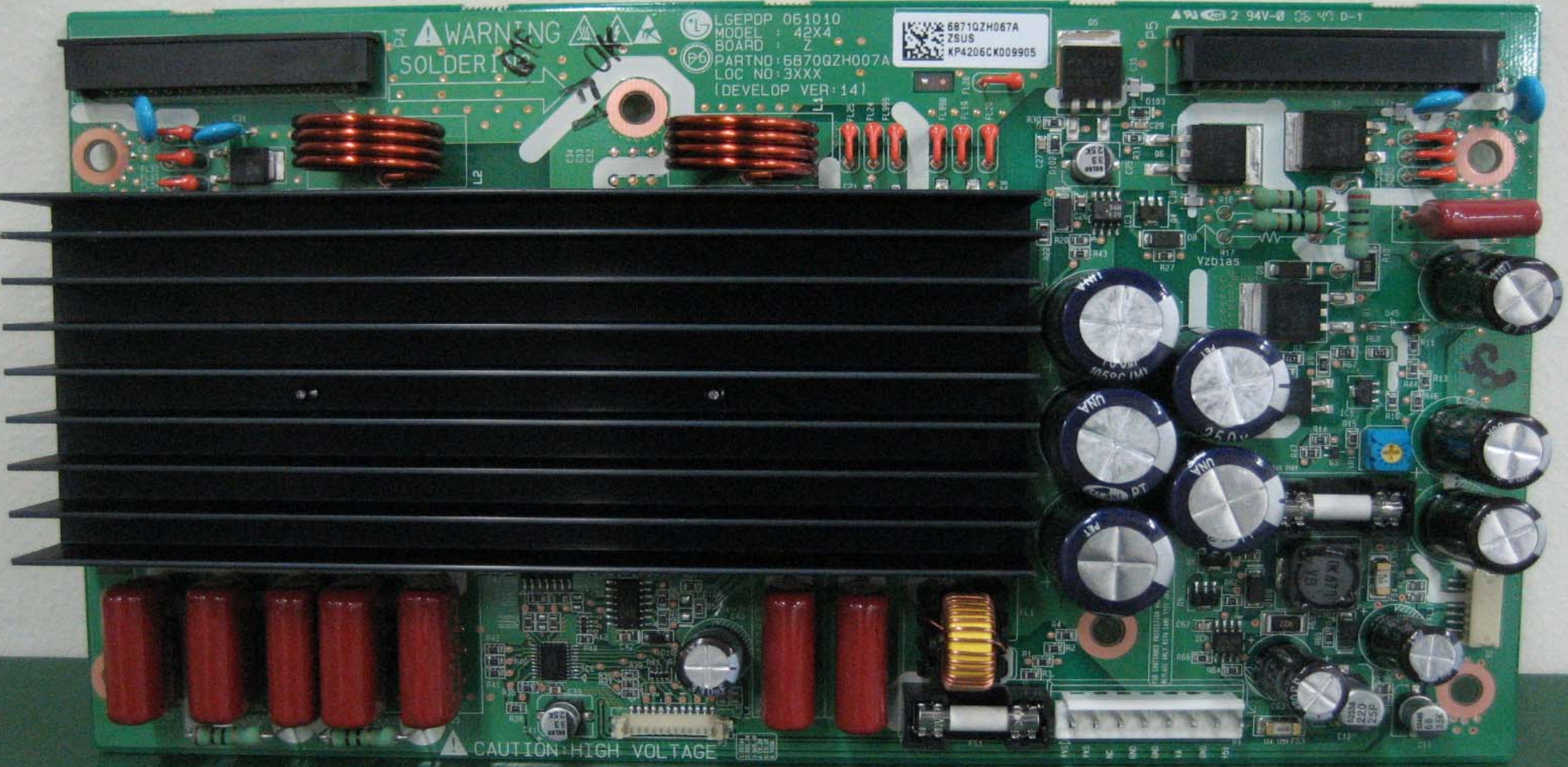


WARNING  
SOLDER

LGE PDP 061010  
MODEL : 42X4  
BOARD : Z  
PARTNO : 6870QZH007A  
LOC NO : 3XXX  
(DEVELOP VER : 14)

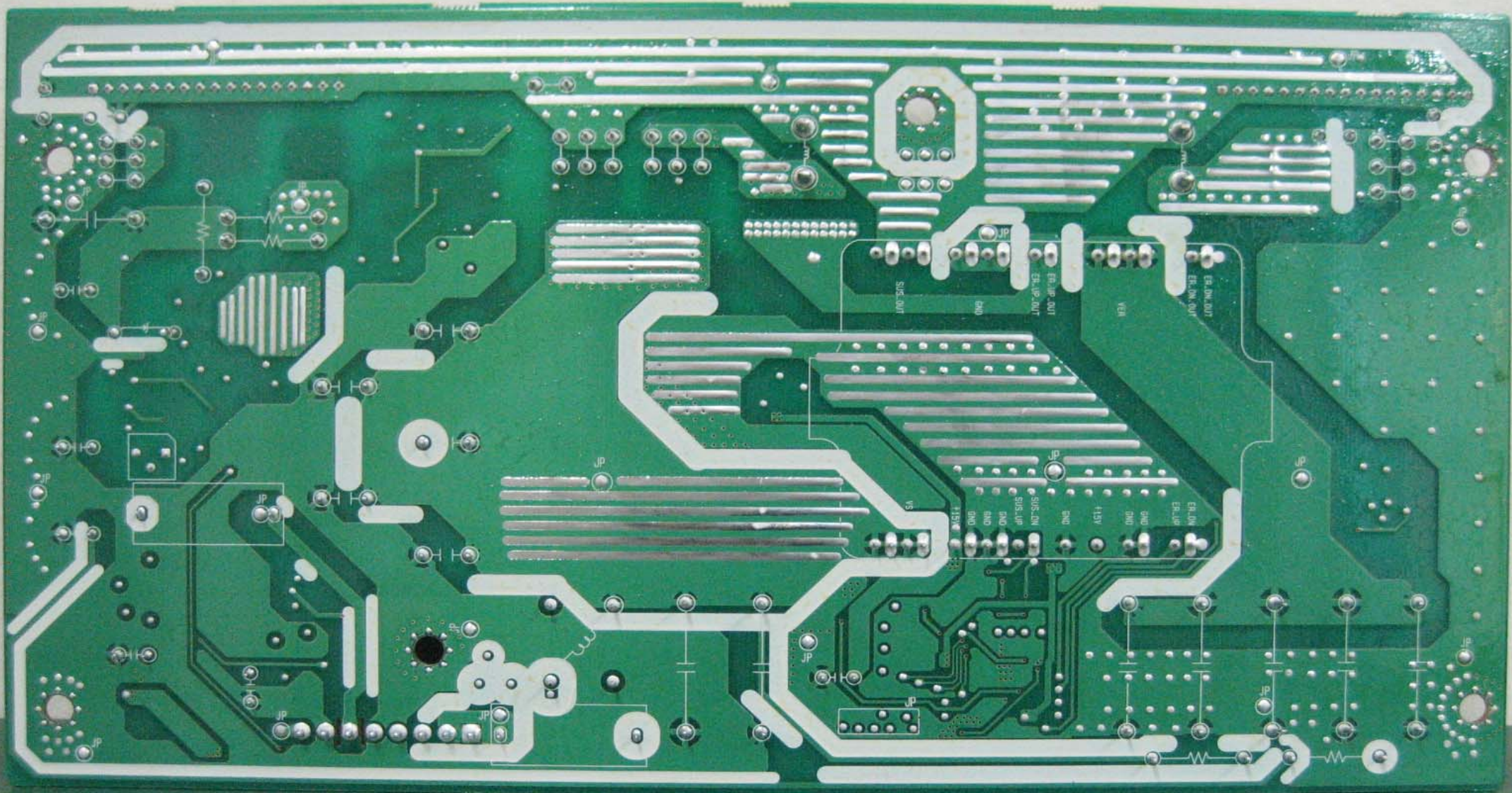
6871QZH067A  
ZSUS  
KP4206CKD09905

2 94V-8 36 47 0-1

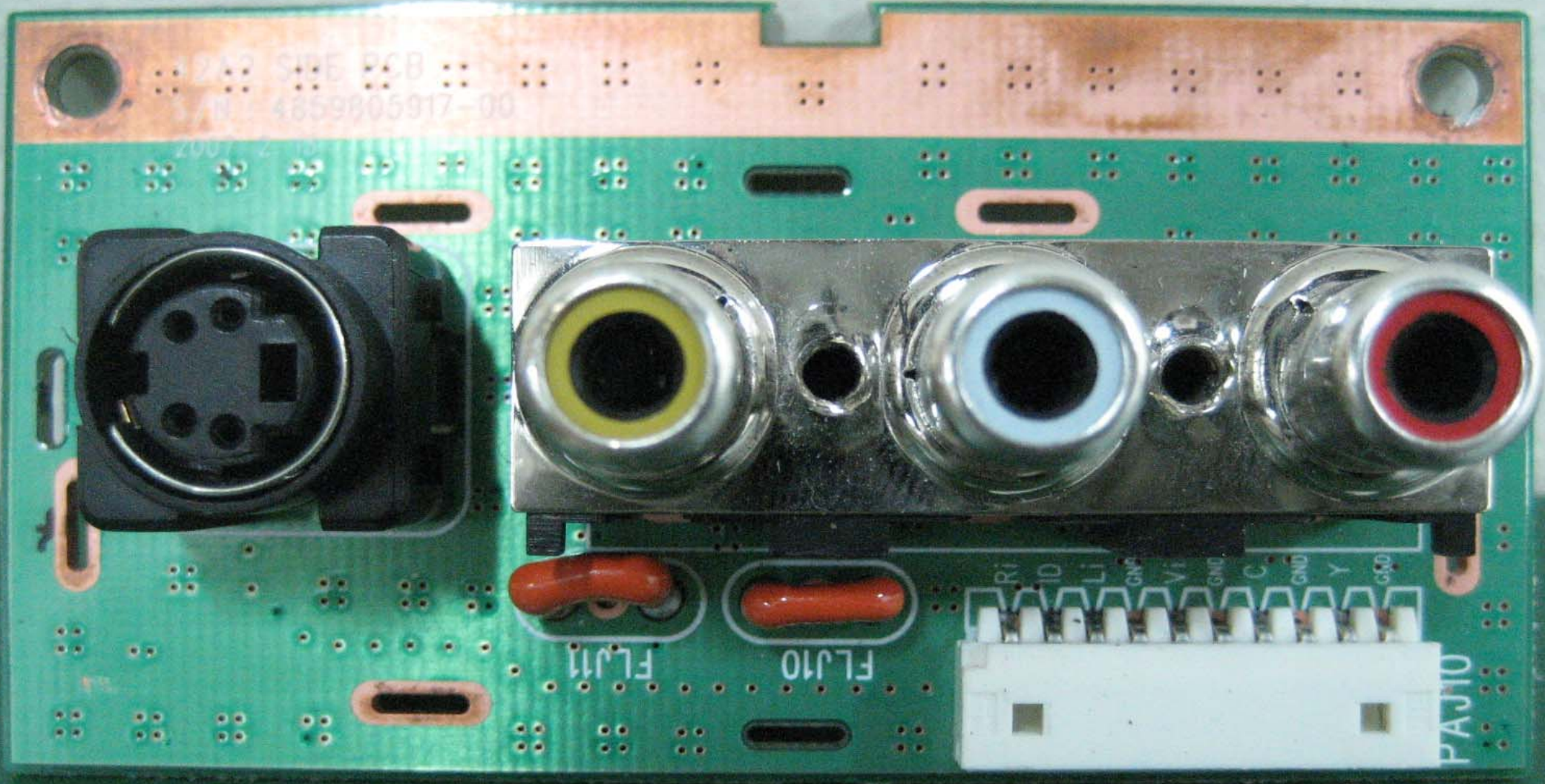


CAUTION-HIGH VOLTAGE









2007 2 10  
SIDE PCB  
4859805917-00

FLJ11

FLJ10

R  
V  
D  
L  
I  
G  
N  
F  
V  
i  
G  
N  
D  
C  
G  
N  
D  
Y  
G  
N  
D

PAJ10



42A2 SIDE PCB  
S/N:4859805917-00  
2007. 1. 13

S070283

AKK4-V-0

Ri

Li

Vi

JJ11

JJ10

GND Y GND C GND Vi GND Li ID Ri

FLJ10

FLJ11

PAJ10