



KLS-EE42TKH18 REV:0.97

KOREA TAIYO YUDEN CO.,LTD.

503H 8173 LF

Pb-free 94V-0 6632L-0503A

CAUTION HIGH VOLTAGE
高圧注意

CAUTION HIGH VOLTAGE
高圧注意

51800011
A9 84023-00
0109

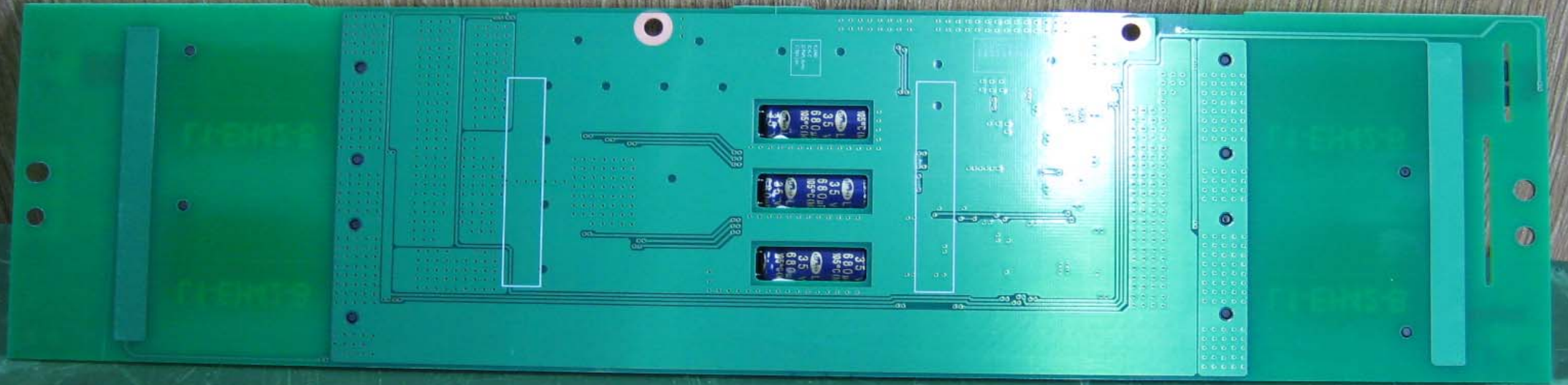
LG Philips LCD Co., Ltd.

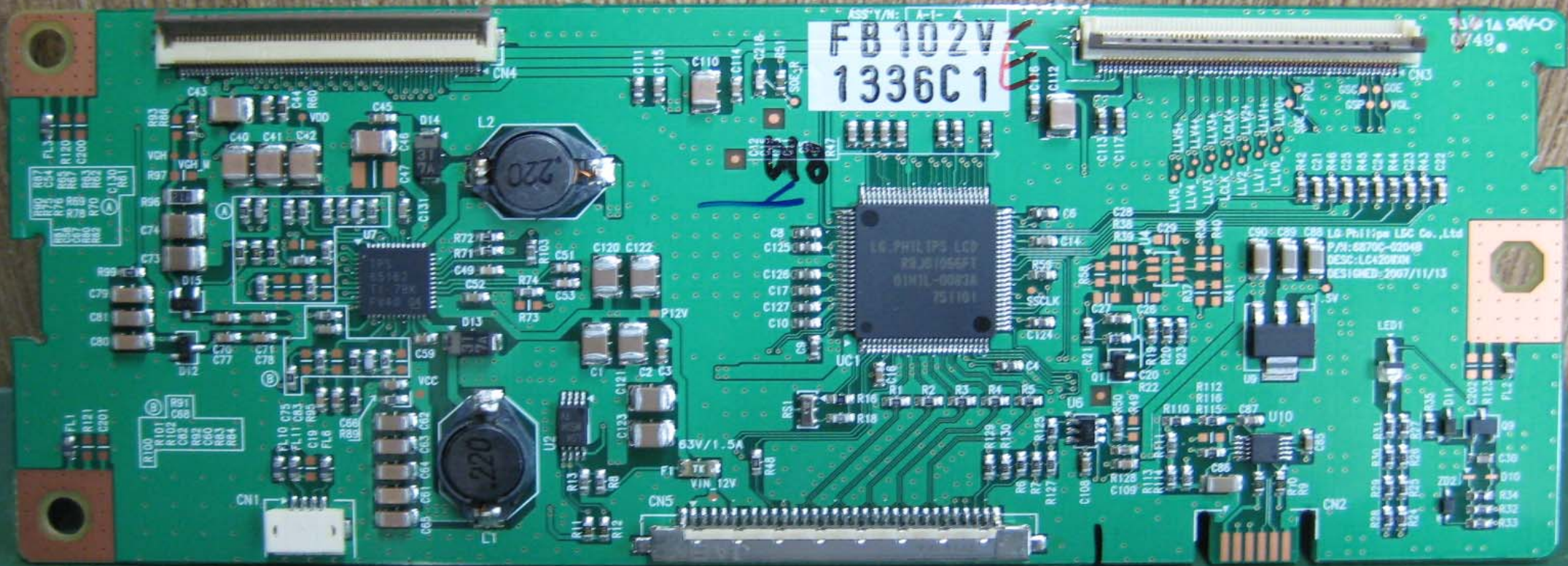
T3

T1

CN2

CN1





ASSY/N: A-1-4
FB 102V
1336C 1

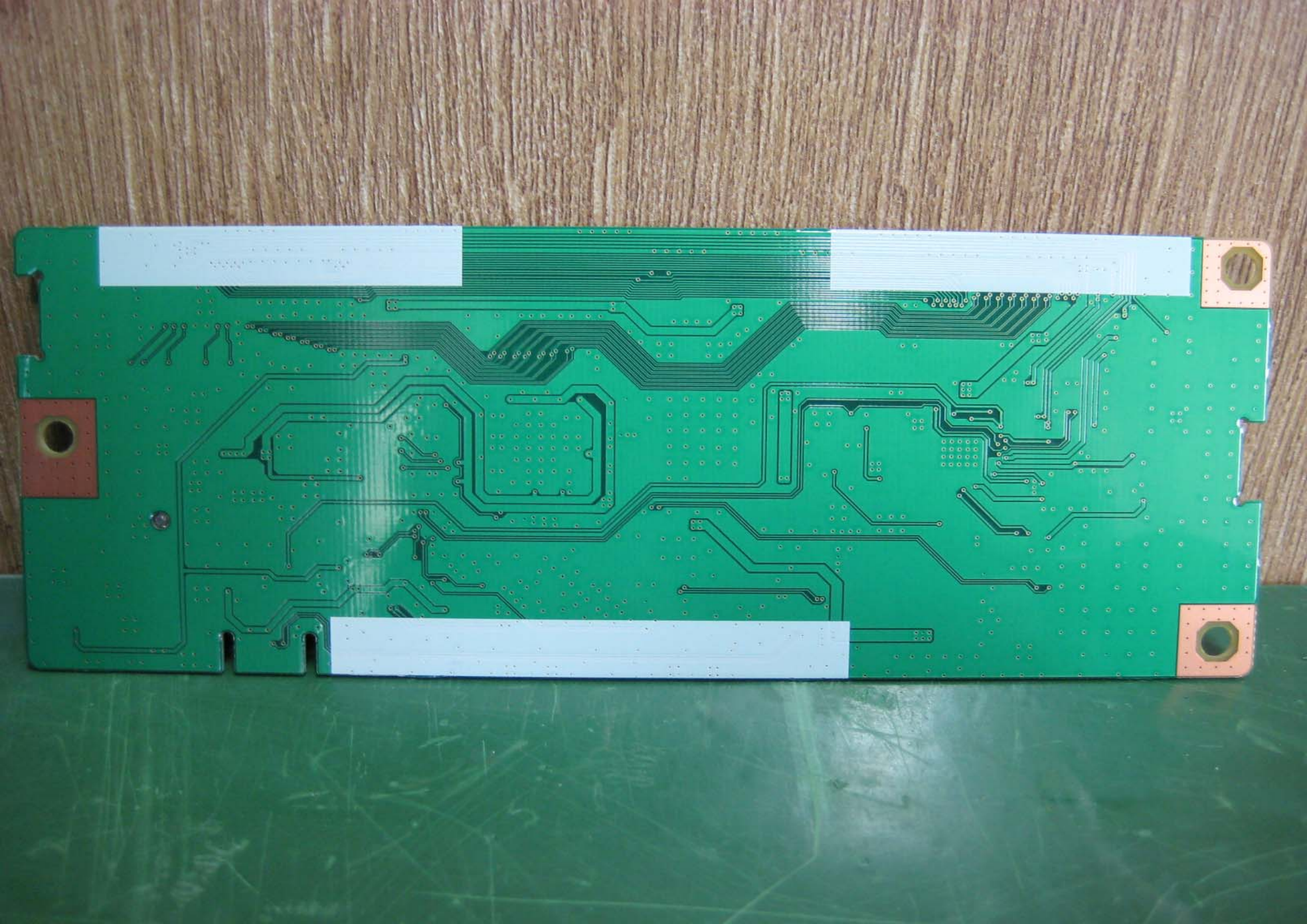
9301A 94V-O
0749

LG PHILIPS LCD
R3J01056P1
01M1L-00K3A
751101

LG-Philips LDC Co., Ltd
P/N: 6870C-0204B
DESC: LCA20K3A
DESIGNED: 2007/11/13

63V/1.5A
VIN_12V

LED1





SW104

SW105

SW106

SW107

SW103

SW102

SW101

RC124

RC122

RC123

RC121

AV

MENU

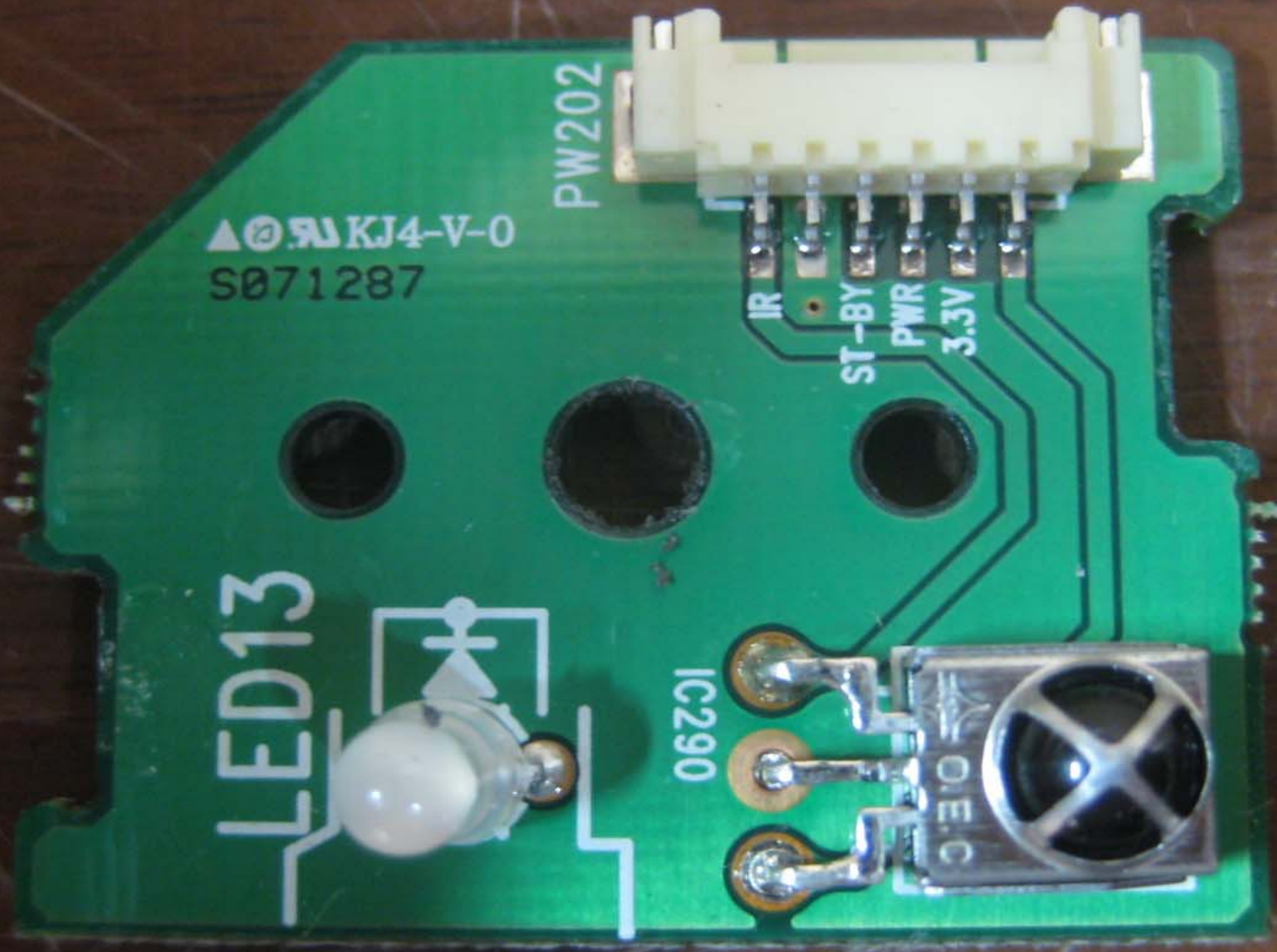
VOL+

VOL-

CH+

CH-

POWER



▲ © 5A KJ4-V-0
S071287

PW202

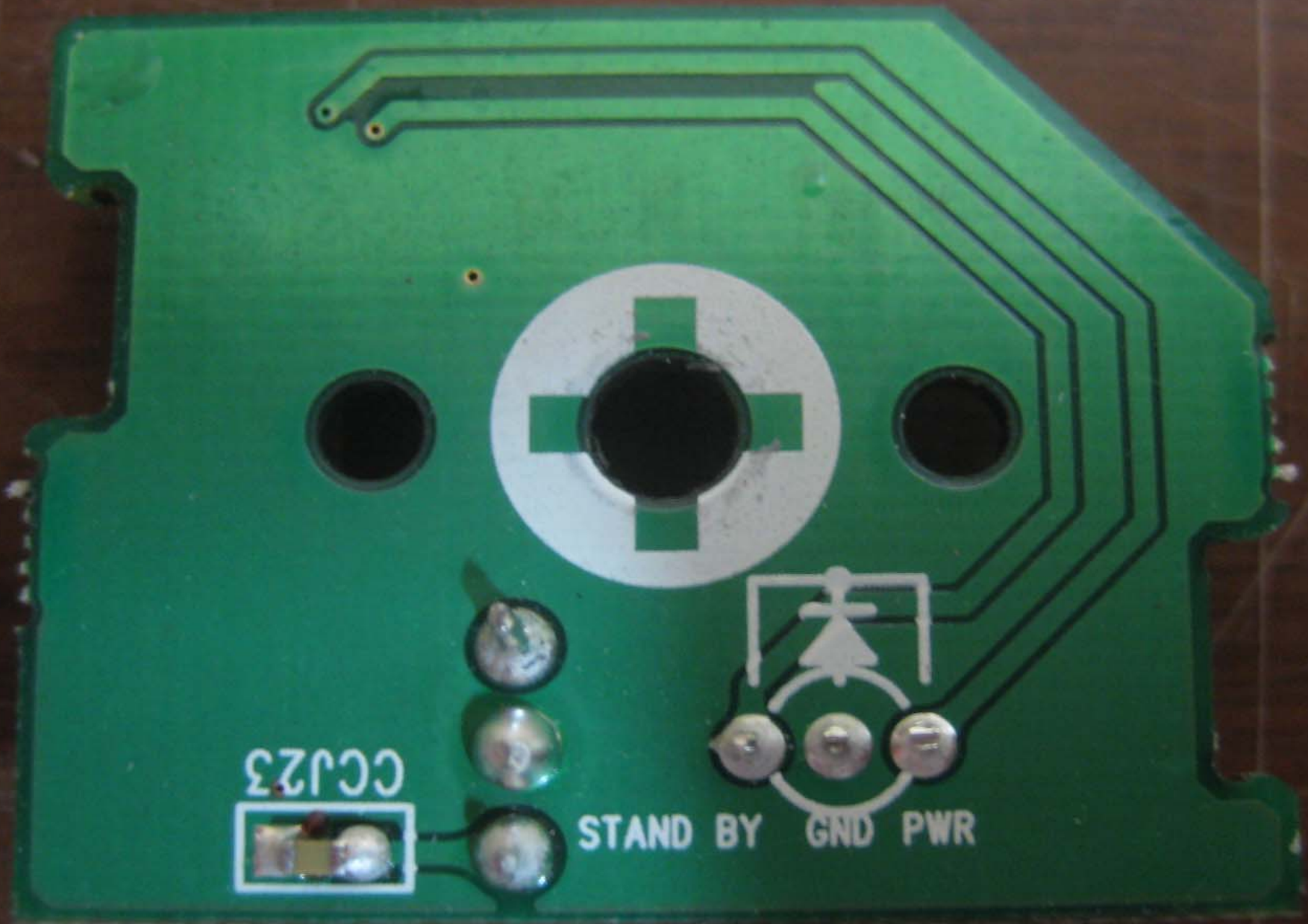
LED13



IC290

IR
ST-8Y
PWR
3.3V

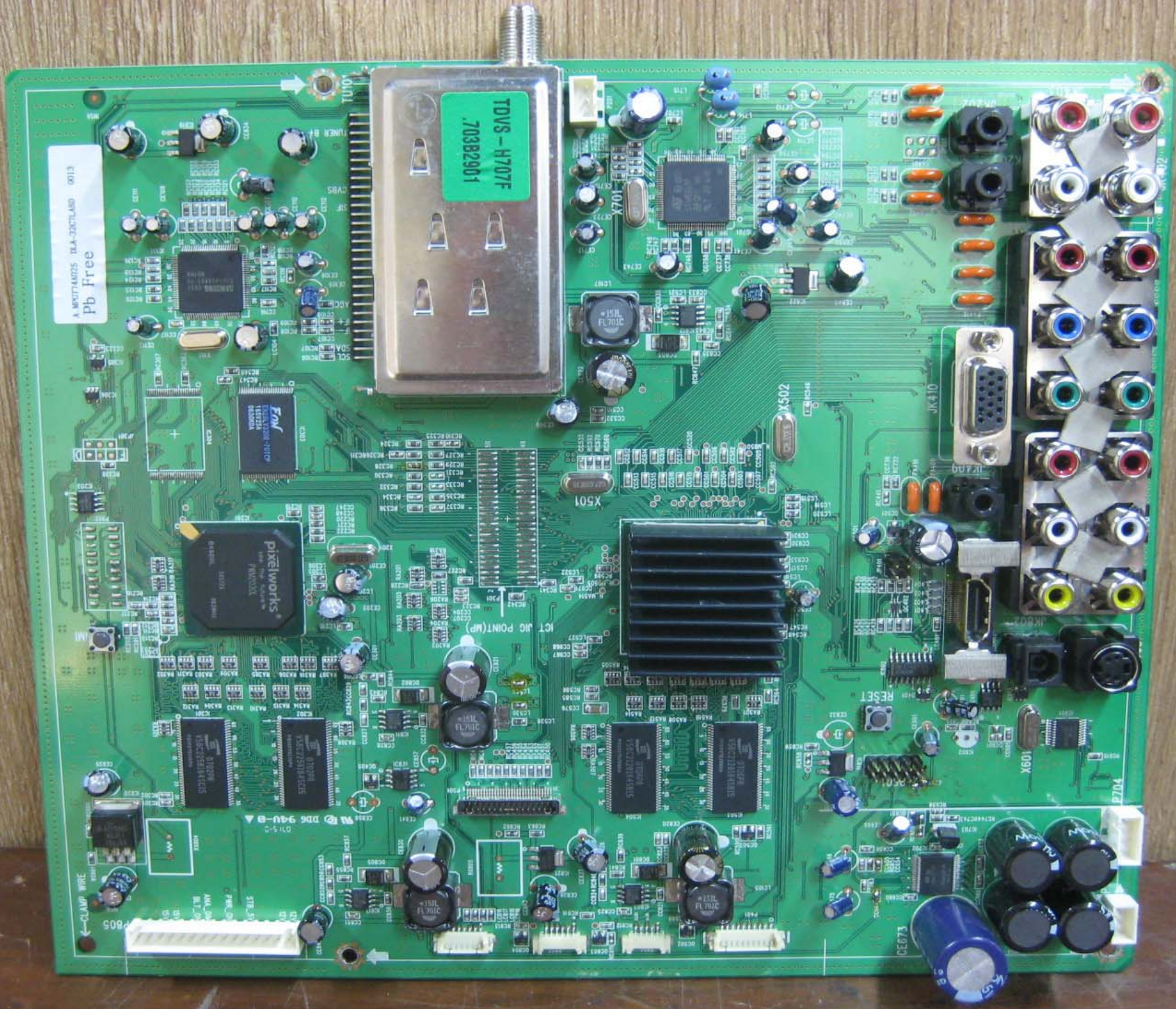




CCJ23



STAND BY GND PWR



MP07744025 DELA-3027LAND 0013
Pb Free

TDVS-H707F
7038B2901

pixelworks
PIXELWORKS

Fox
FOX

7050X

ICT JIG POINT(MP)

RESET

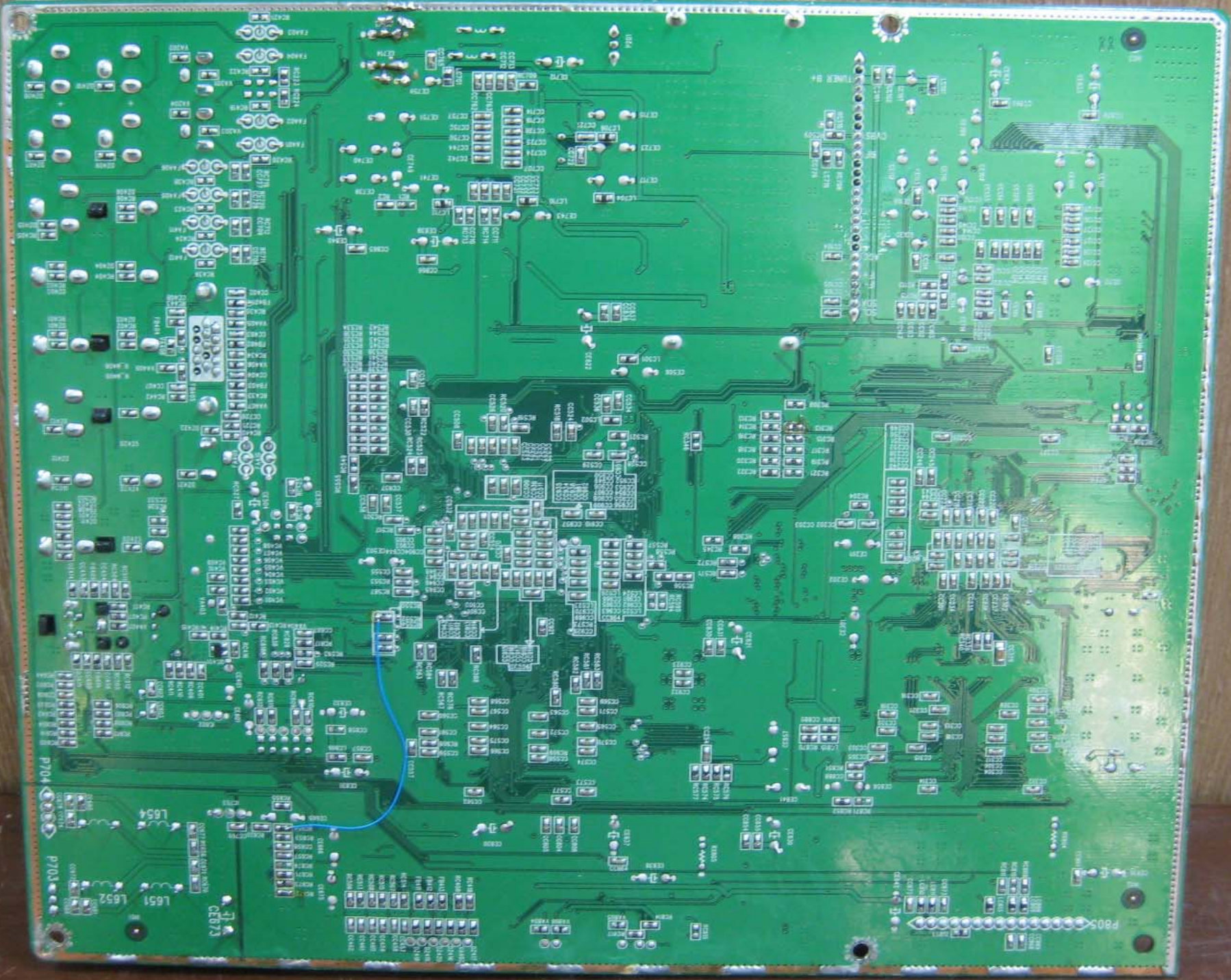
109X

2704

←CLAMP WIRE

D6 94U-8

2.5V



P704

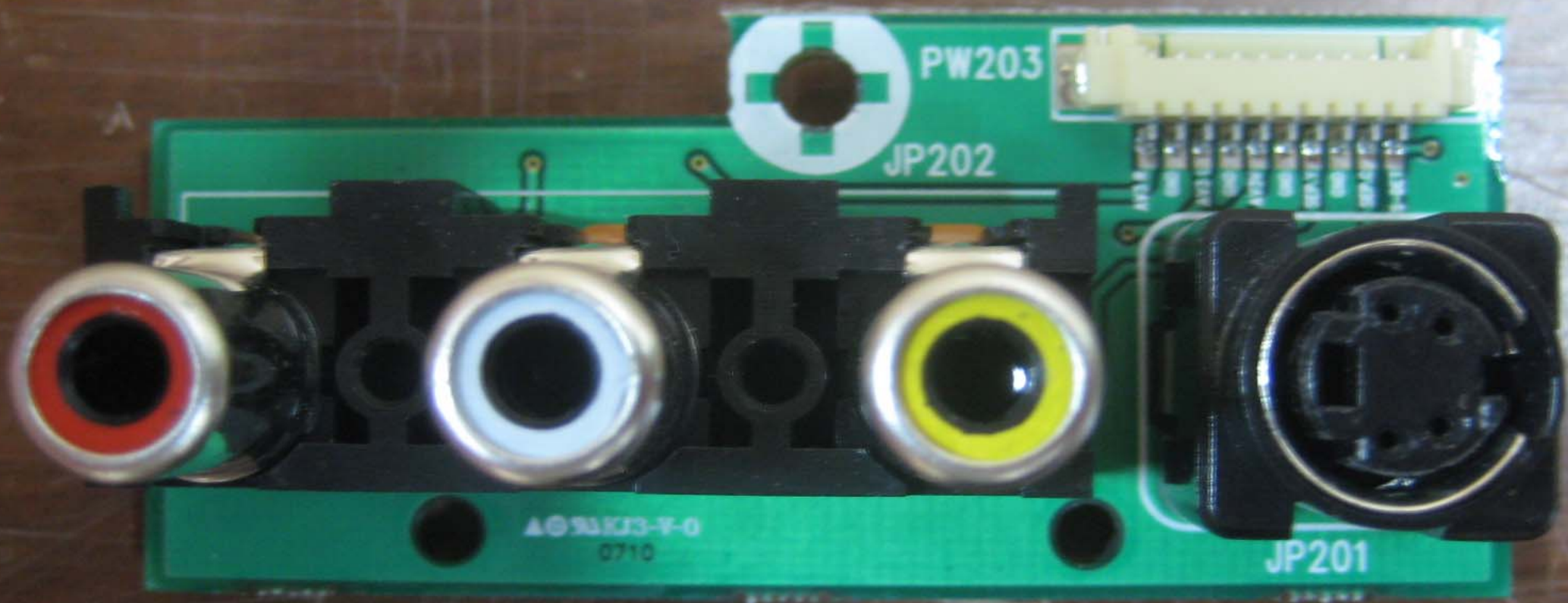
P704

L851
L852
L854

CE673

P805

CE673
CE674
CE675
CE676
CE677
CE678
CE679
CE680
CE681
CE682
CE683
CE684
CE685
CE686
CE687
CE688
CE689
CE690
CE691
CE692
CE693
CE694
CE695
CE696
CE697
CE698
CE699
CE700
CE701
CE702
CE703
CE704
CE705
CE706
CE707
CE708
CE709
CE710
CE711
CE712
CE713
CE714
CE715
CE716
CE717
CE718
CE719
CE720
CE721
CE722
CE723
CE724
CE725
CE726
CE727
CE728
CE729
CE730
CE731
CE732
CE733
CE734
CE735
CE736
CE737
CE738
CE739
CE740
CE741
CE742
CE743
CE744
CE745
CE746
CE747
CE748
CE749
CE750
CE751
CE752
CE753
CE754
CE755
CE756
CE757
CE758
CE759
CE760
CE761
CE762
CE763
CE764
CE765
CE766
CE767
CE768
CE769
CE770
CE771
CE772
CE773
CE774
CE775
CE776
CE777
CE778
CE779
CE780
CE781
CE782
CE783
CE784
CE785
CE786
CE787
CE788
CE789
CE790
CE791
CE792
CE793
CE794
CE795
CE796
CE797
CE798
CE799
CE800
CE801
CE802
CE803
CE804
CE805
CE806
CE807
CE808
CE809
CE810
CE811
CE812
CE813
CE814
CE815
CE816
CE817
CE818
CE819
CE820
CE821
CE822
CE823
CE824
CE825
CE826
CE827
CE828
CE829
CE830
CE831
CE832
CE833
CE834
CE835
CE836
CE837
CE838
CE839
CE840
CE841
CE842
CE843
CE844
CE845
CE846
CE847
CE848
CE849
CE850
CE851
CE852
CE853
CE854
CE855
CE856
CE857
CE858
CE859
CE860
CE861
CE862
CE863
CE864
CE865
CE866
CE867
CE868
CE869
CE870
CE871
CE872
CE873
CE874
CE875
CE876
CE877
CE878
CE879
CE880
CE881
CE882
CE883
CE884
CE885
CE886
CE887
CE888
CE889
CE890
CE891
CE892
CE893
CE894
CE895
CE896
CE897
CE898
CE899
CE900
CE901
CE902
CE903
CE904
CE905
CE906
CE907
CE908
CE909
CE910
CE911
CE912
CE913
CE914
CE915
CE916
CE917
CE918
CE919
CE920
CE921
CE922
CE923
CE924
CE925
CE926
CE927
CE928
CE929
CE930
CE931
CE932
CE933
CE934
CE935
CE936
CE937
CE938
CE939
CE940
CE941
CE942
CE943
CE944
CE945
CE946
CE947
CE948
CE949
CE950
CE951
CE952
CE953
CE954
CE955
CE956
CE957
CE958
CE959
CE960
CE961
CE962
CE963
CE964
CE965
CE966
CE967
CE968
CE969
CE970
CE971
CE972
CE973
CE974
CE975
CE976
CE977
CE978
CE979
CE980
CE981
CE982
CE983
CE984
CE985
CE986
CE987
CE988
CE989
CE990
CE991
CE992
CE993
CE994
CE995
CE996
CE997
CE998
CE999
CE1000

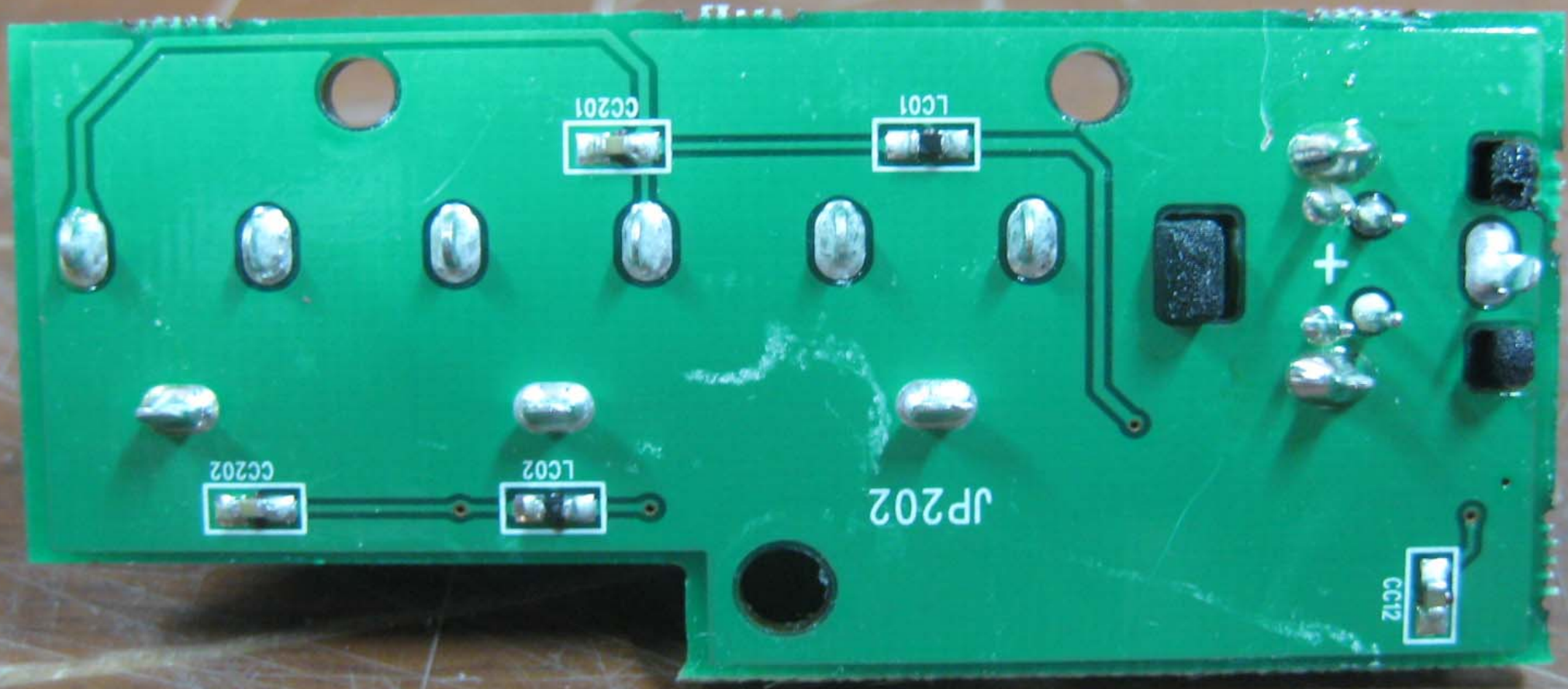


PW203

JP202

JP201

0710



CC201

LC01

CC202

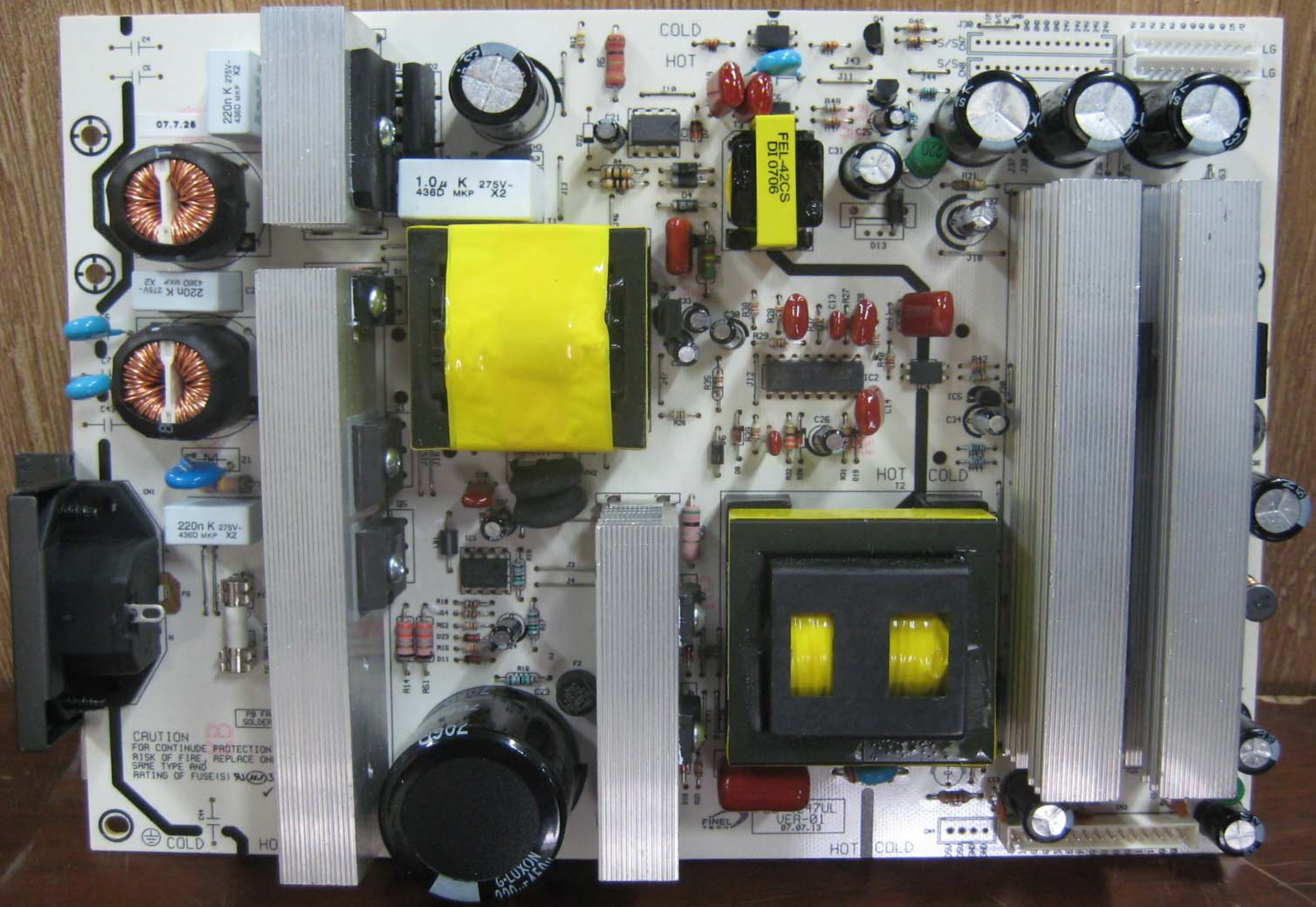
LC02

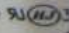
JP202

CC12

+





CAUTION
FOR CONTINUE PROTECTION
RISK OF FIRE, REPLACE ON
SAME TYPE AND
RATING OF FUSE(S) 

220n K 275V-
436D MKP X2

220n K 275V-
436D MKP X2

220n K 275V-
436D MKP X2

1.0µ K 275V-
436D MKP X2

FEL-42CS
D1 0706

VER-01
07.07.13

COLD
HOT

HOT
COLD

HOT COLD

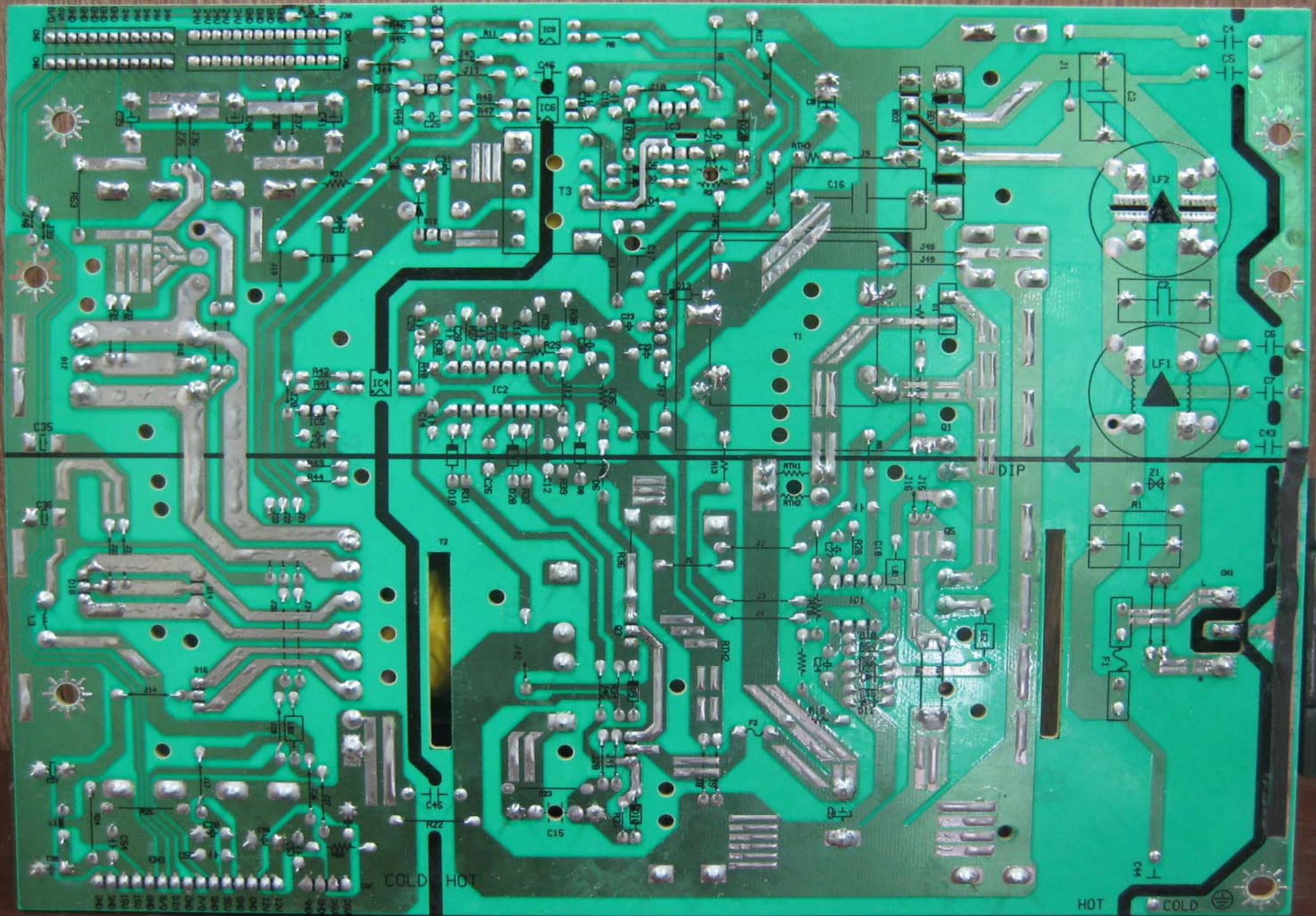
07.7.28

PS FR
SOLDER

COLD HO

L6
L6

GILUXON
250V 1A



COLD HOT

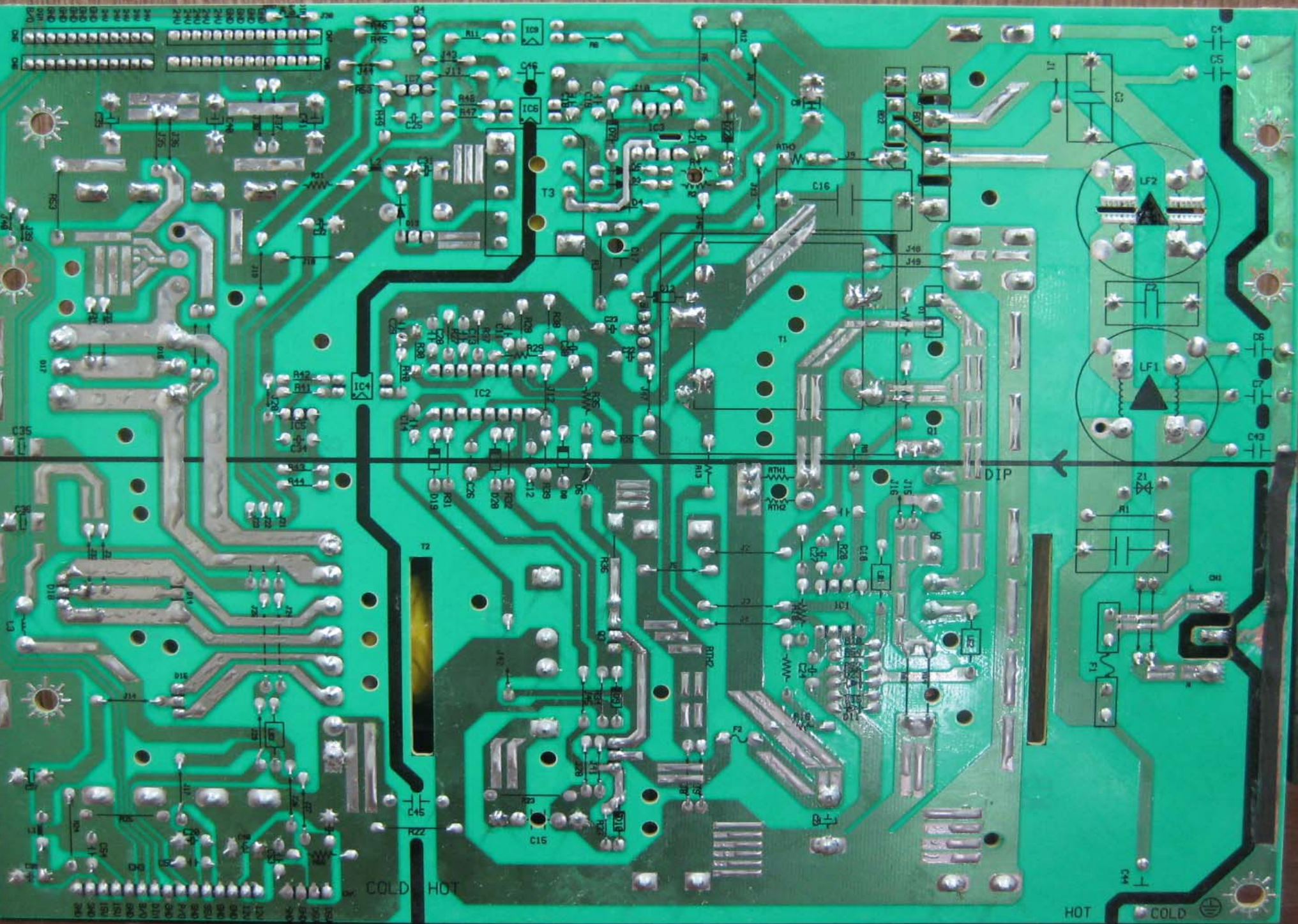
HOT

COLD

DIP

LF2

LF1

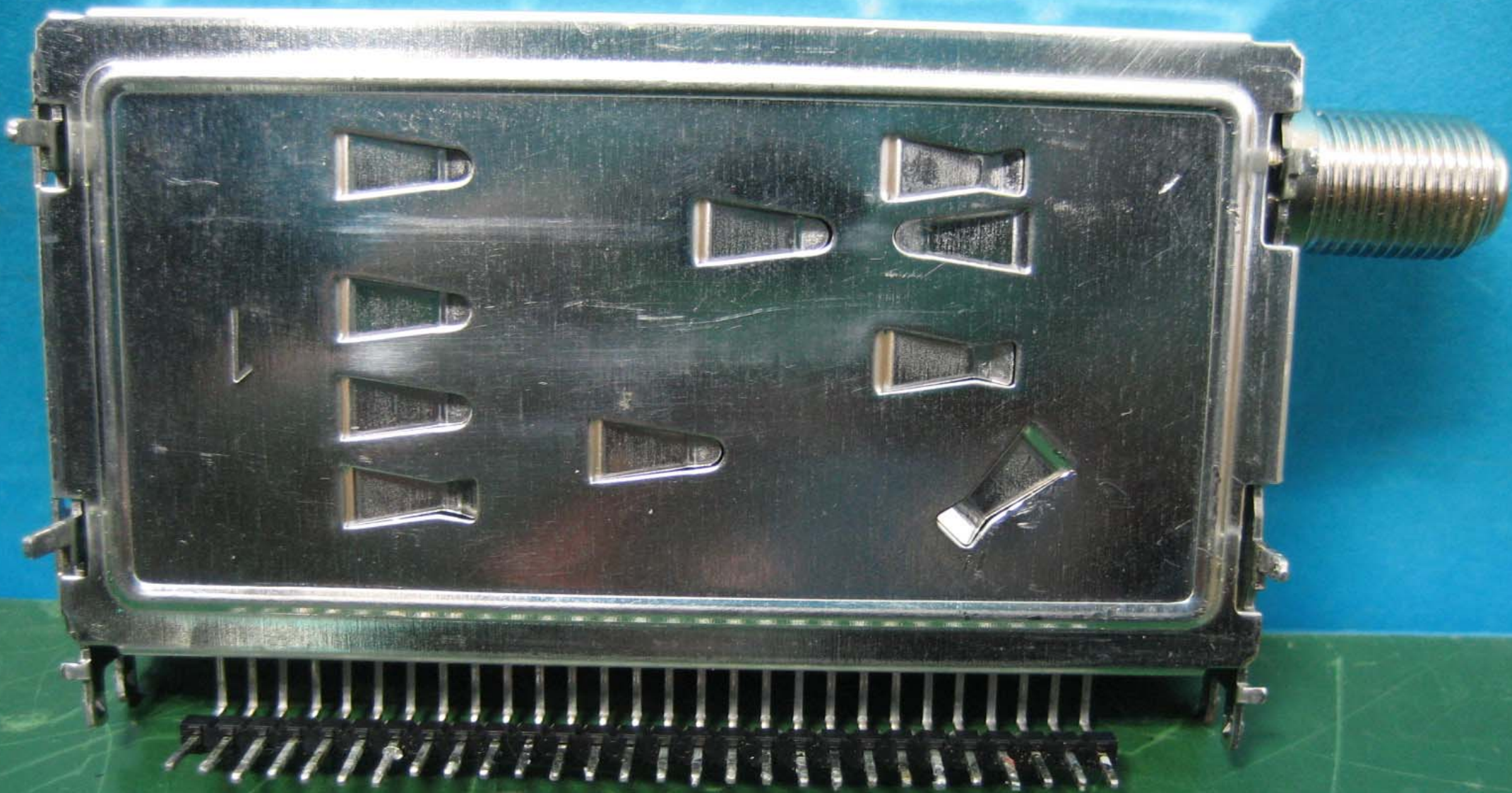


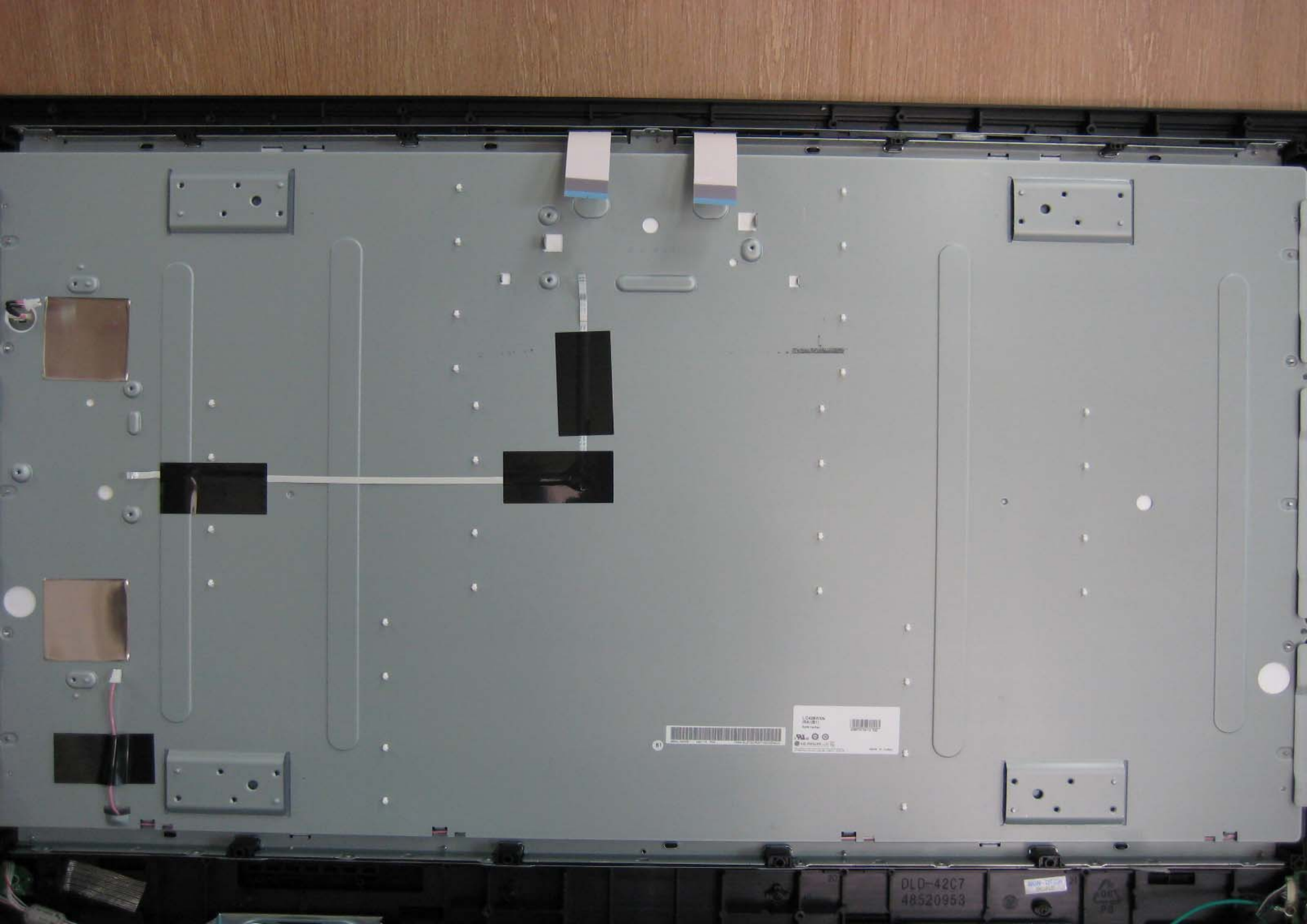
TDVS - H707F
.703B2901



1.







LG ELECTRONICS
48520953
UL
©
LG ELECTRONICS, LTD.
MADE IN KOREA

DLD-42C7
48520953



**LC420WXN
(SA)(B1)**

RoHS Verified



42081P4750118 G32



LG.PHILIPS LCD



This product may be covered by one or more of the following
US Patent Nos. 5,041,823 ; 5,061,920 ; 5,280,371 ; 5,835,139

MADE IN KOREA