

ASS'Y P/N/A-2-2

1365A
1A102C

LG.Philips LCD Co.,Ltd
MODEL : LC370WXN-SAA1(T)
P/N : 6870C-0193A
DESIGNED : 2007/09/06

9447-8
8750

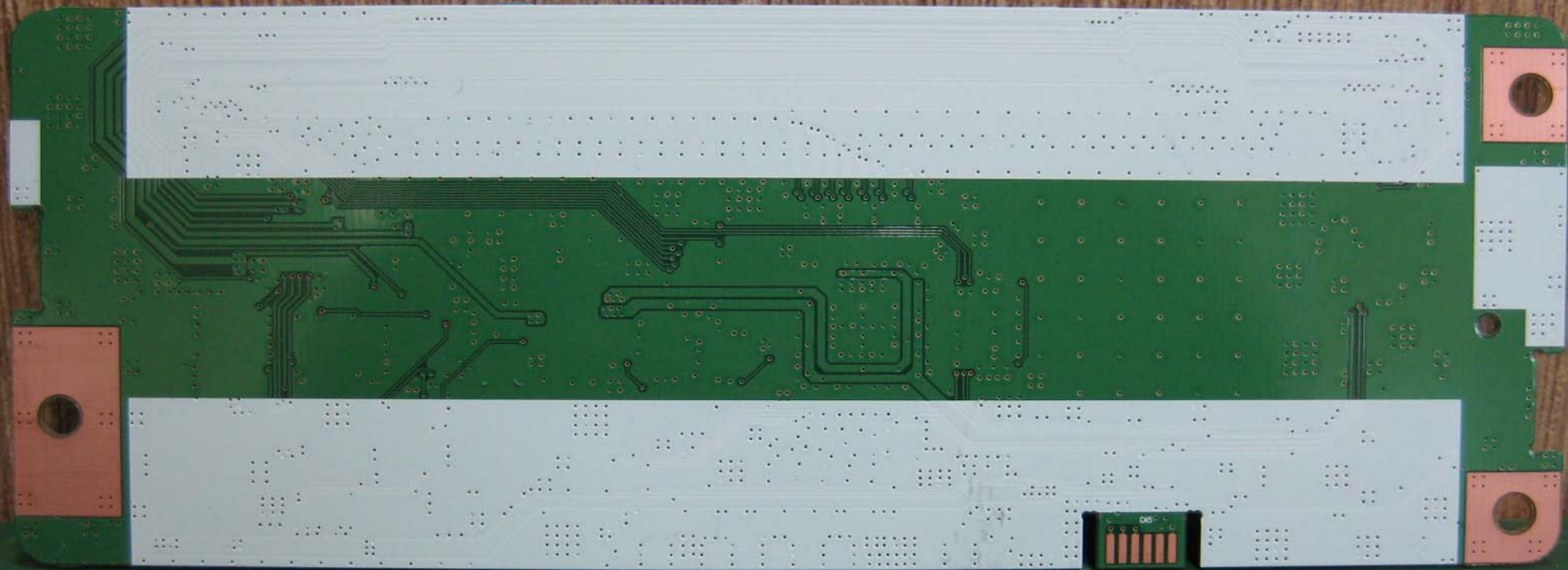
15

LG.PHILIPS LCD
TL2411MC
01TLL-0026A
R005_0750

1.5A/0.3V

U70





66321-0504A T1

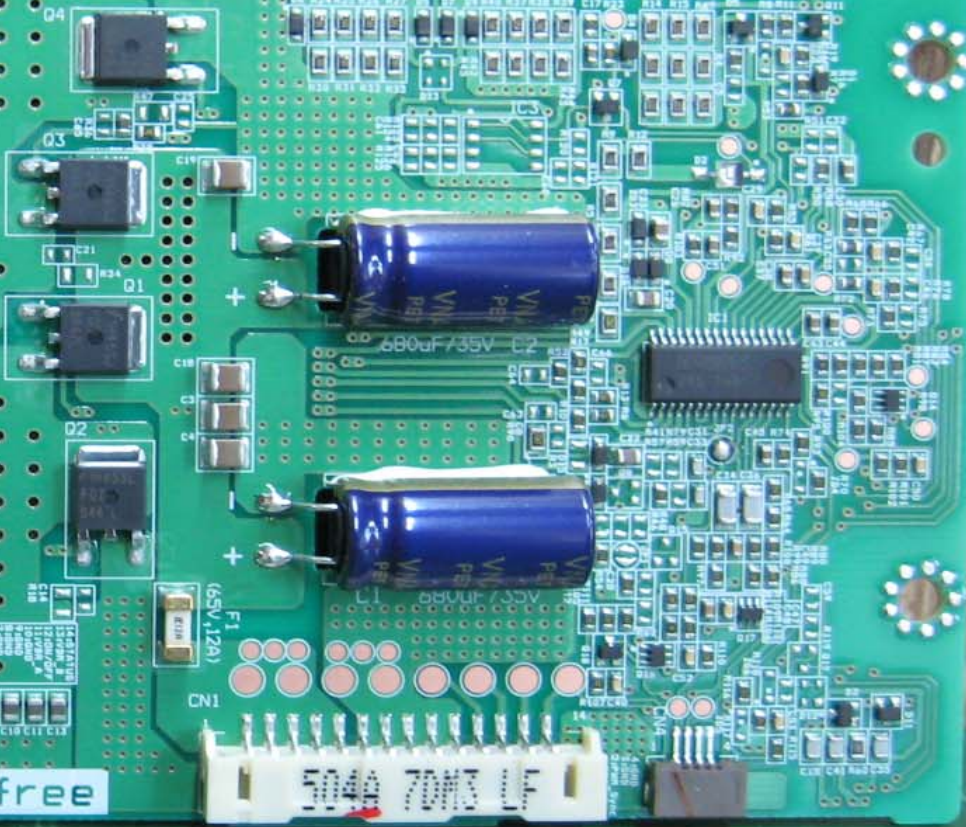
T2

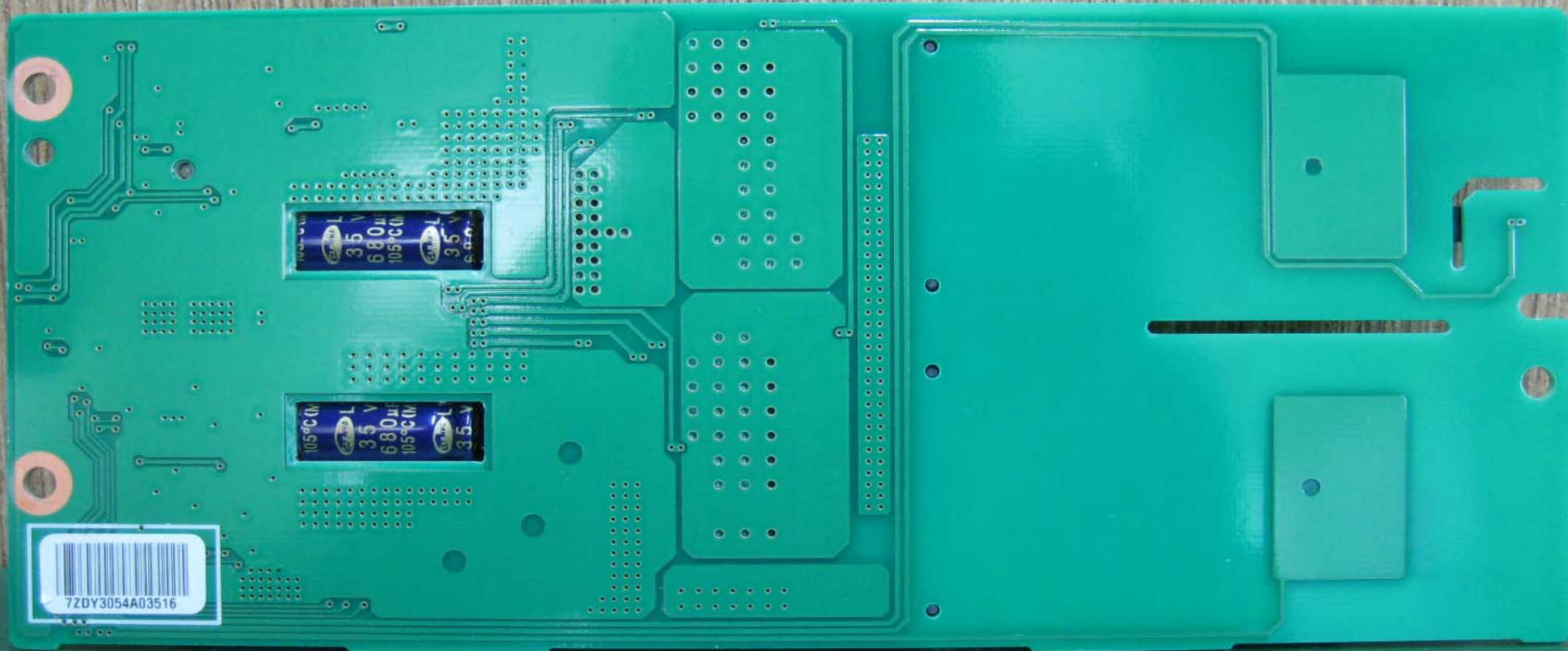
NA SIGHT 1.4
88000037 7122 ...
C27

CAUTION!
HIGH VOLTAGE
KLS-EE37TKH16(A)
REV:2.0 94V-0
DNZ

Pb-free

5044 70M3 UF





7ZDY3054A03516

35 V
680µF
105°C

35 V
680µF
105°C

CAUTION
FOR CONTINGENT PROTECTION REAR PANEL
RISK OF FIRE, REPLACE ONLY WITH
SAME TYPE AND RATING OF FUSE



FEL-3237UL
VER-81
07.05.11

HOT



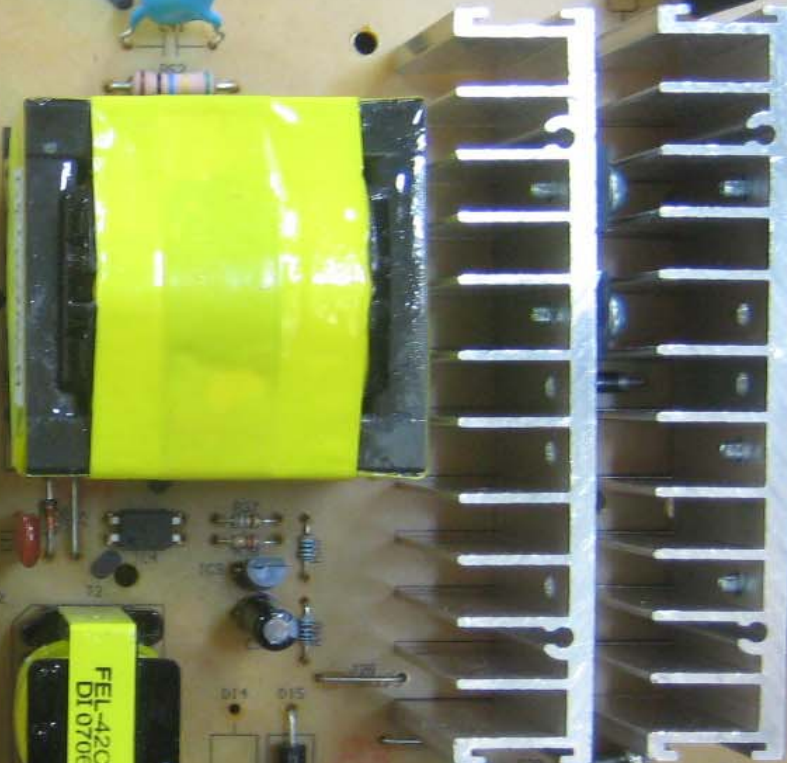
220n K 275V-
4500 KVP X2

220n K 275V-
4500 KVP X2



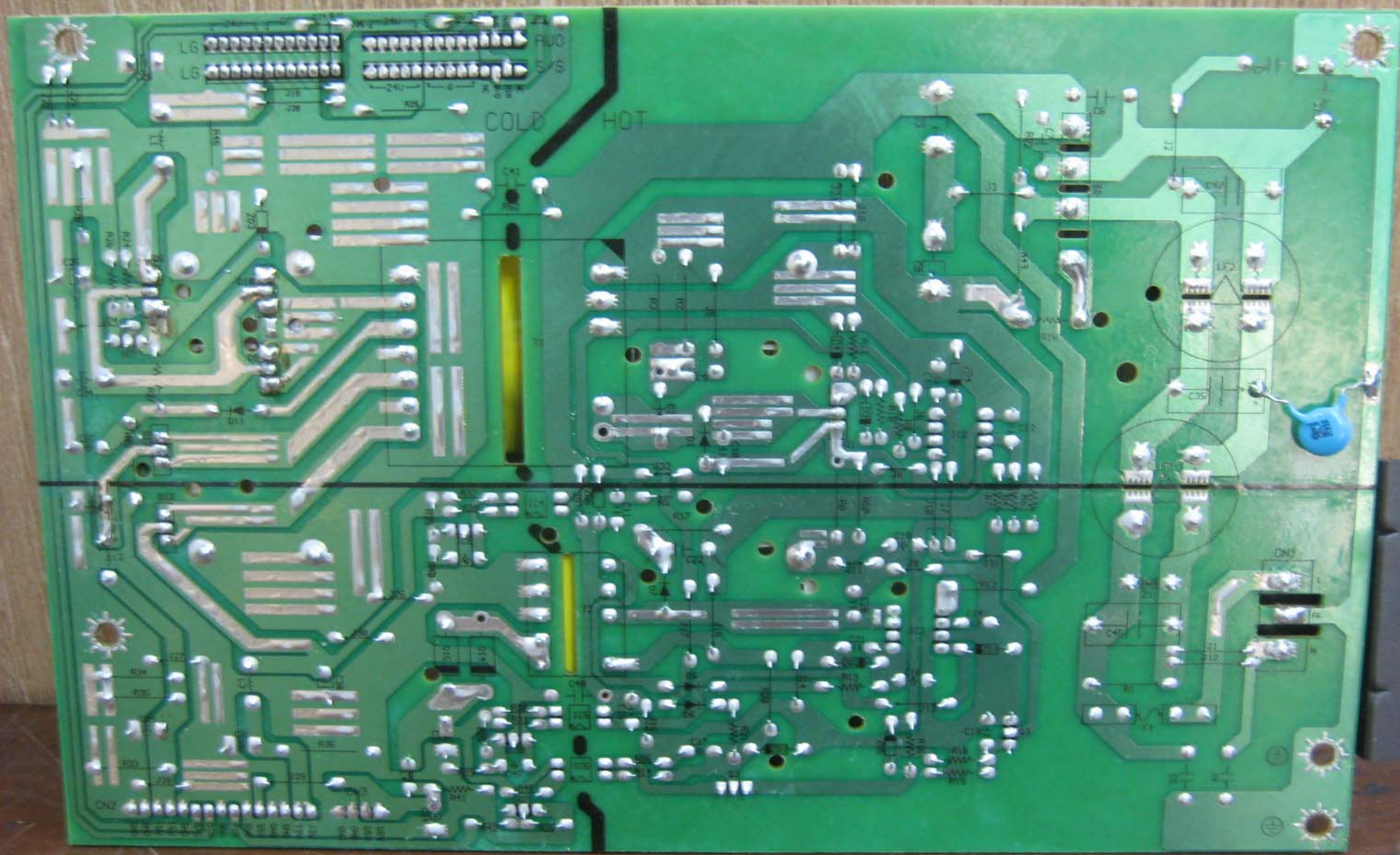
3A 94V-0
✓ RoHS

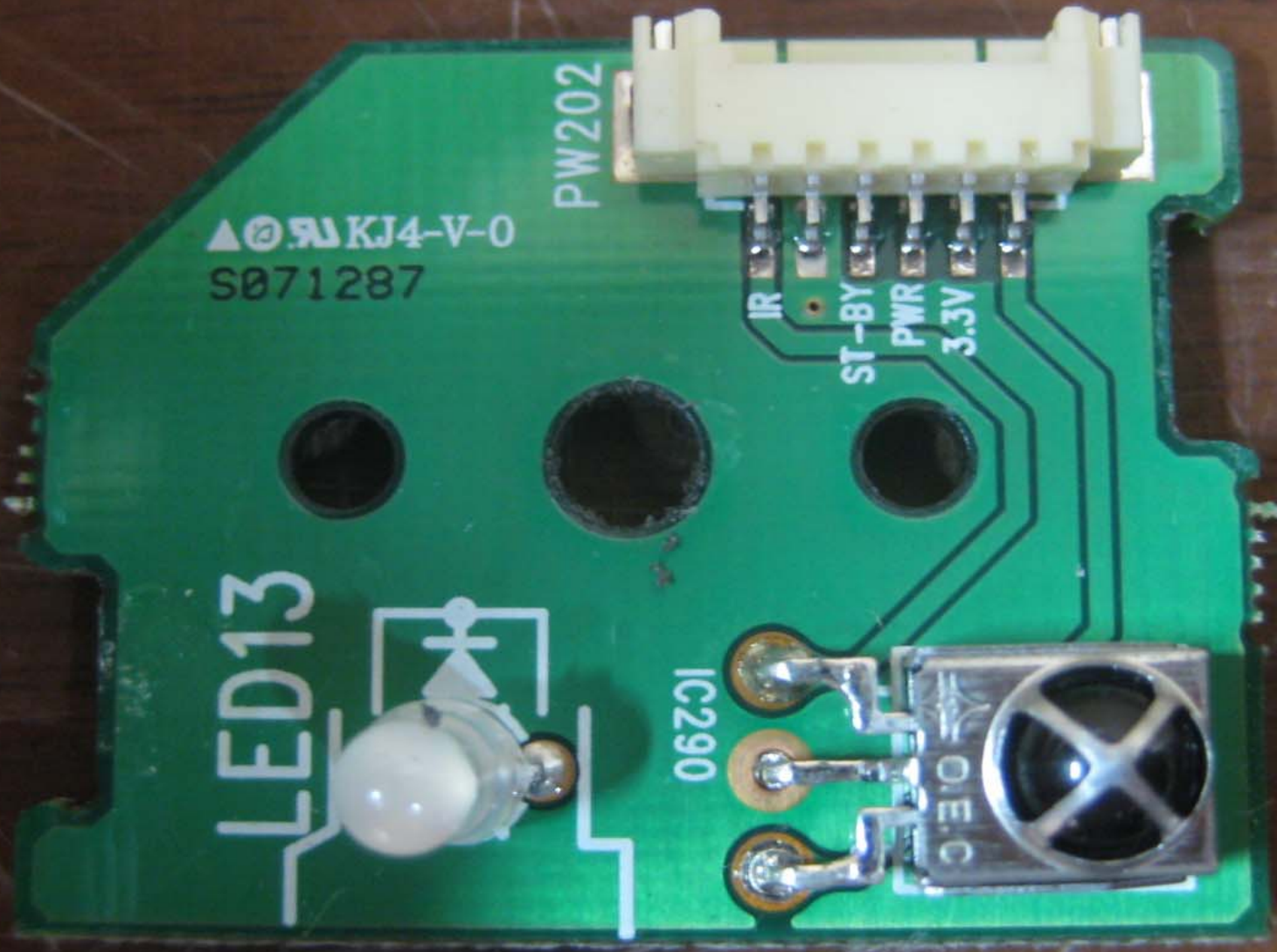
07.7.28



FEL-42CS
DI 0706







© KJ4-V-0
S071287

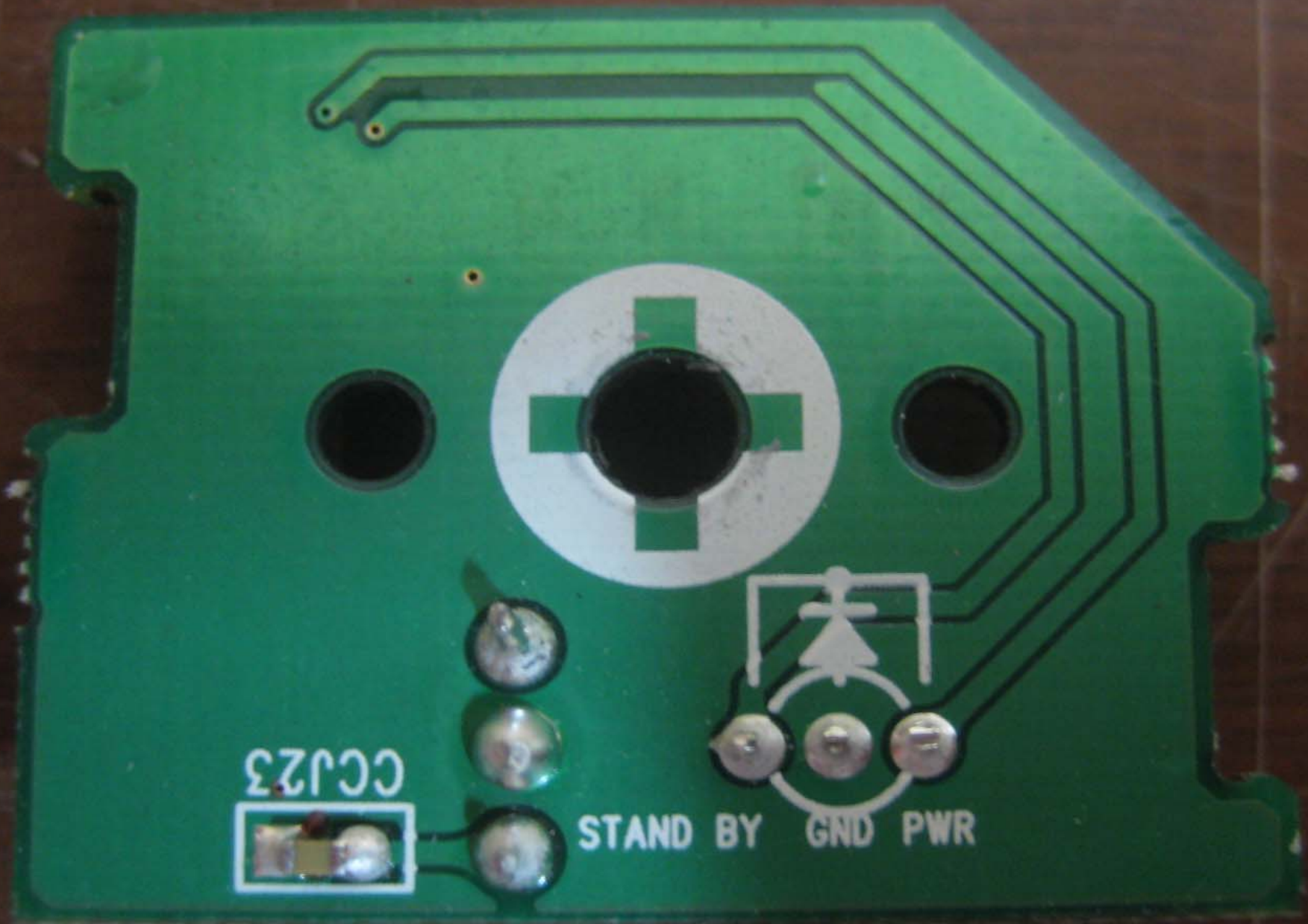
PW202

LED13

IC290

IR
ST-8Y
PWR
3.3V

O/E/C

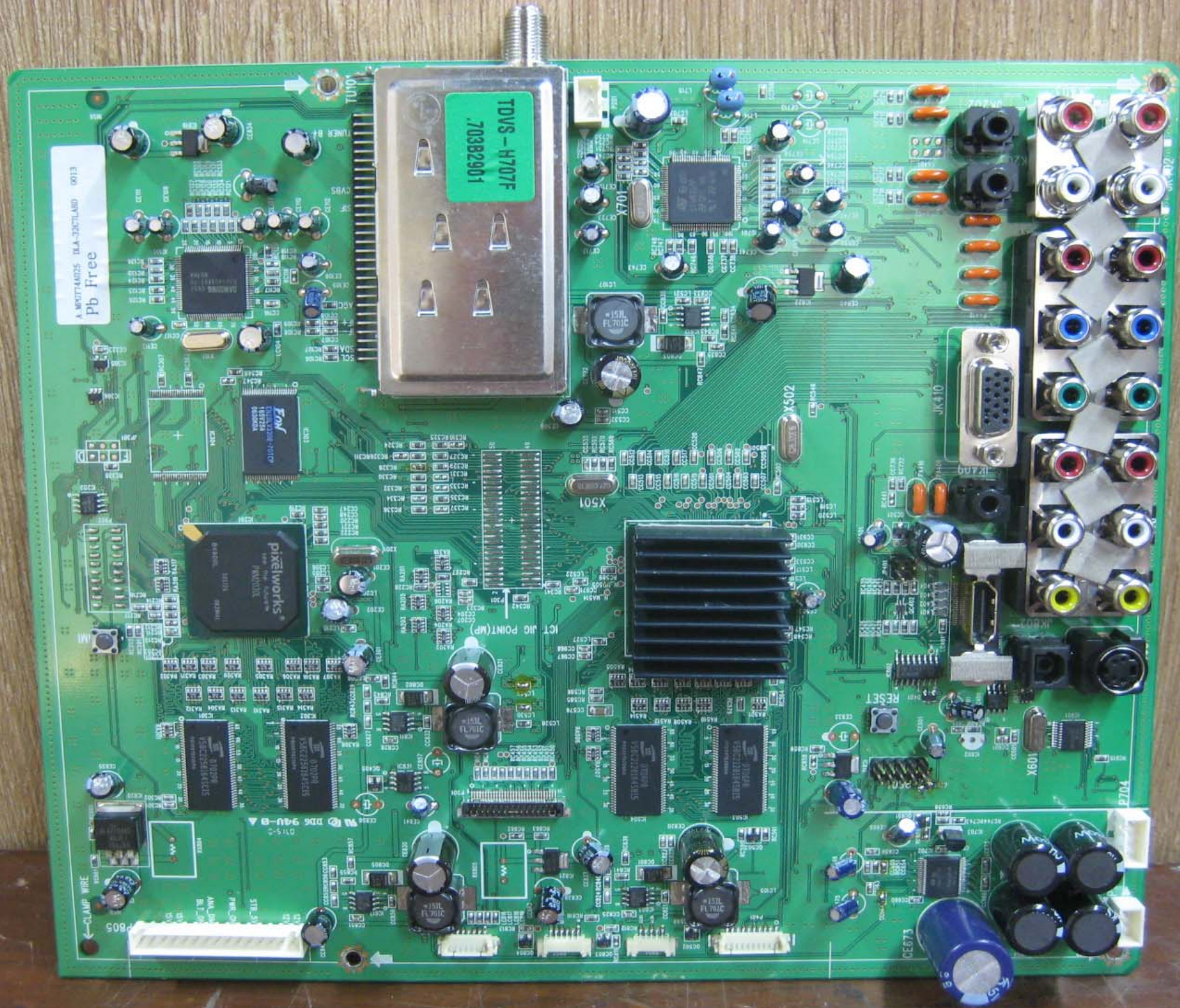


CCJ23



STAND BY GND PWR





MPT744025 DELA-3021LMD 0013
Pb Free

TDVS-H707F
703B2901

pixelworks
PIXELWORKS
P9000E

010294
0382729144285
V58E275E141025

D6 94U-8
D15-0

←CLAMP WIRE
P005

ICT JIG POINT(MP)

5462729144285
V58E275E141025

2.5V
1000µF

109X

RESET

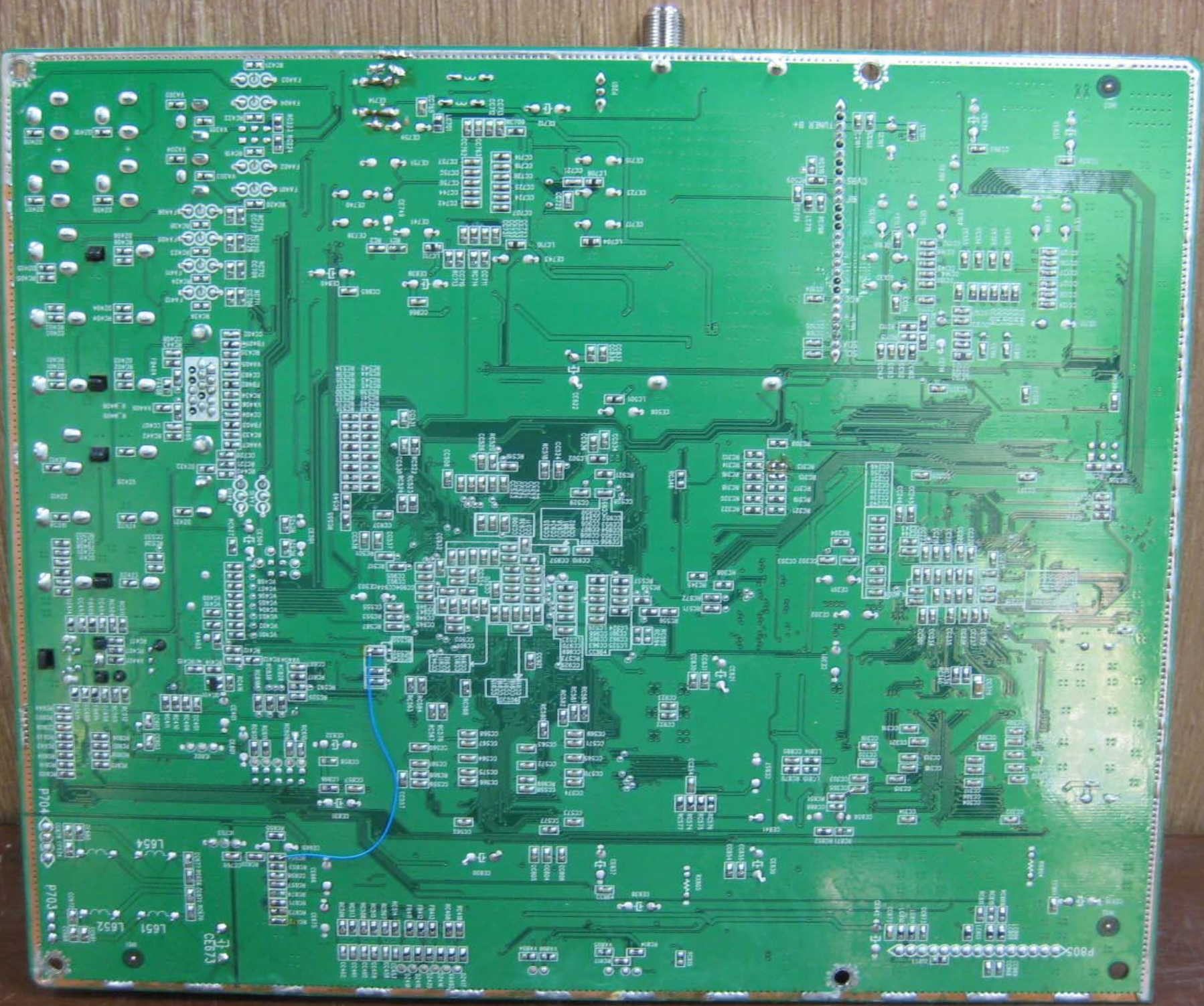
JK 410

705X

X501

JK 410

2704



P704

P704

L851
L852
L854

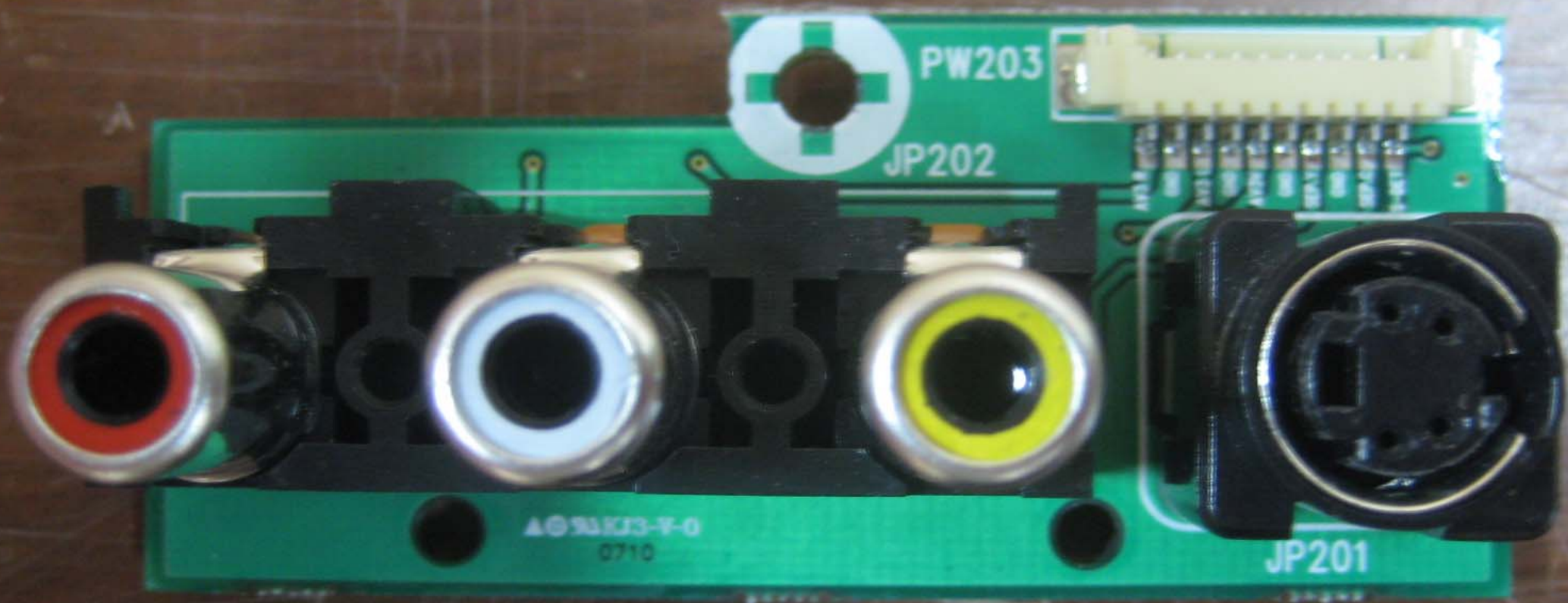
CE673

P005

88

88

PCB populated with components labeled: C1, C2, C3, C4, C5, C6, C7, C8, C9, C10, C11, C12, C13, C14, C15, C16, C17, C18, C19, C20, C21, C22, C23, C24, C25, C26, C27, C28, C29, C30, C31, C32, C33, C34, C35, C36, C37, C38, C39, C40, C41, C42, C43, C44, C45, C46, C47, C48, C49, C50, C51, C52, C53, C54, C55, C56, C57, C58, C59, C60, C61, C62, C63, C64, C65, C66, C67, C68, C69, C70, C71, C72, C73, C74, C75, C76, C77, C78, C79, C80, C81, C82, C83, C84, C85, C86, C87, C88, C89, C90, C91, C92, C93, C94, C95, C96, C97, C98, C99, C100.

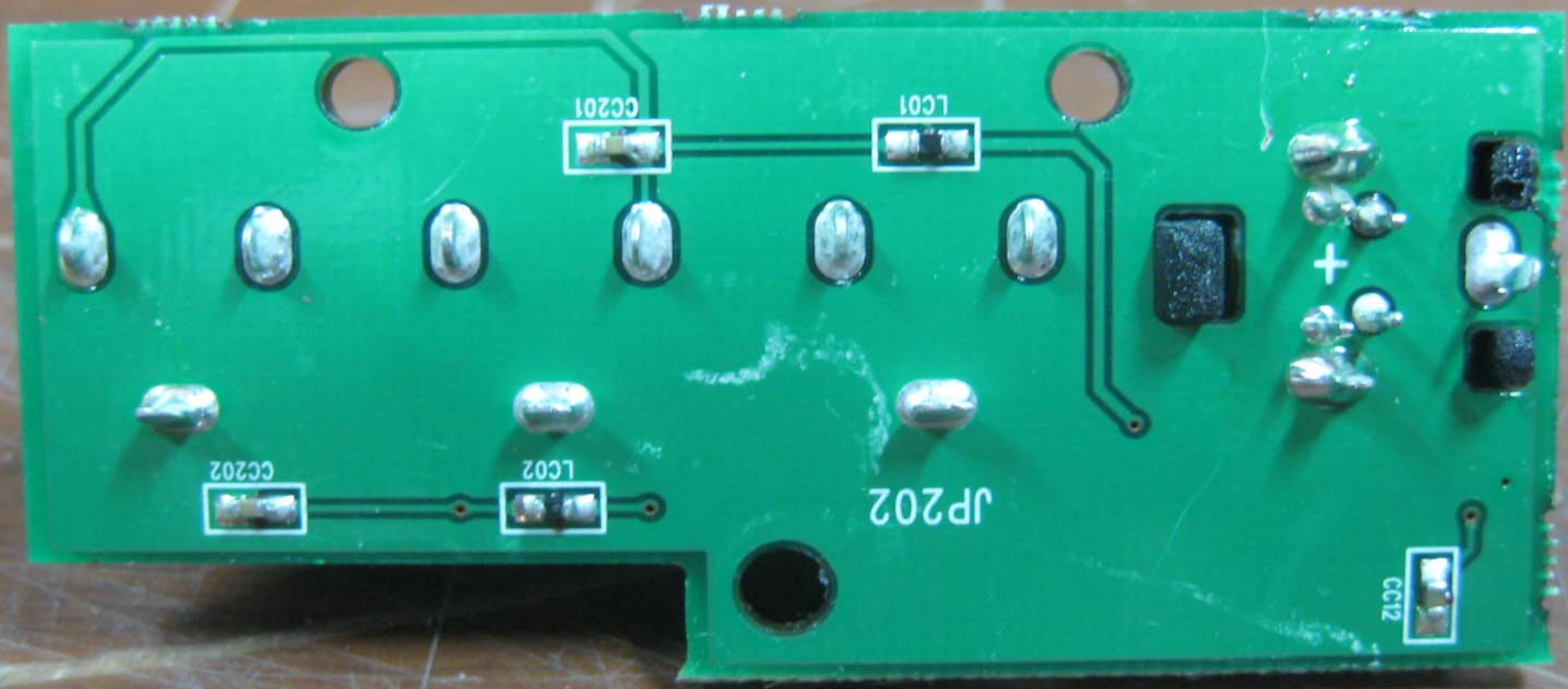


PW203

JP202

JP201

0710
0710



CC201

LC01

JP202

CC202

LC02

CC12

+





SW104

SW105

SW106

SW107

SW103

SW102

SW101

RC124

RC122

RC123

RC121

AV

MENU


VOL+

VOL-

CH+

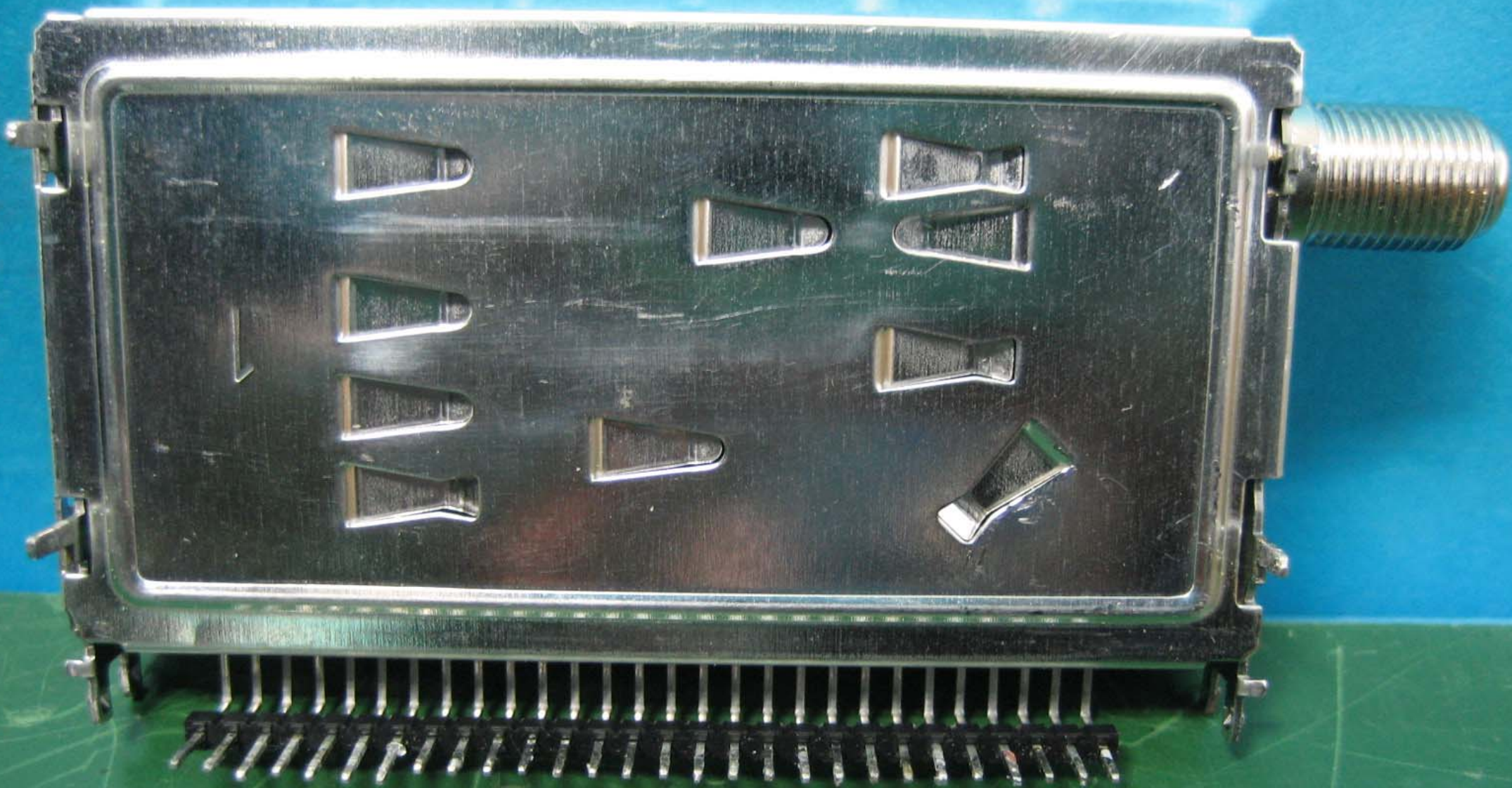
CH-

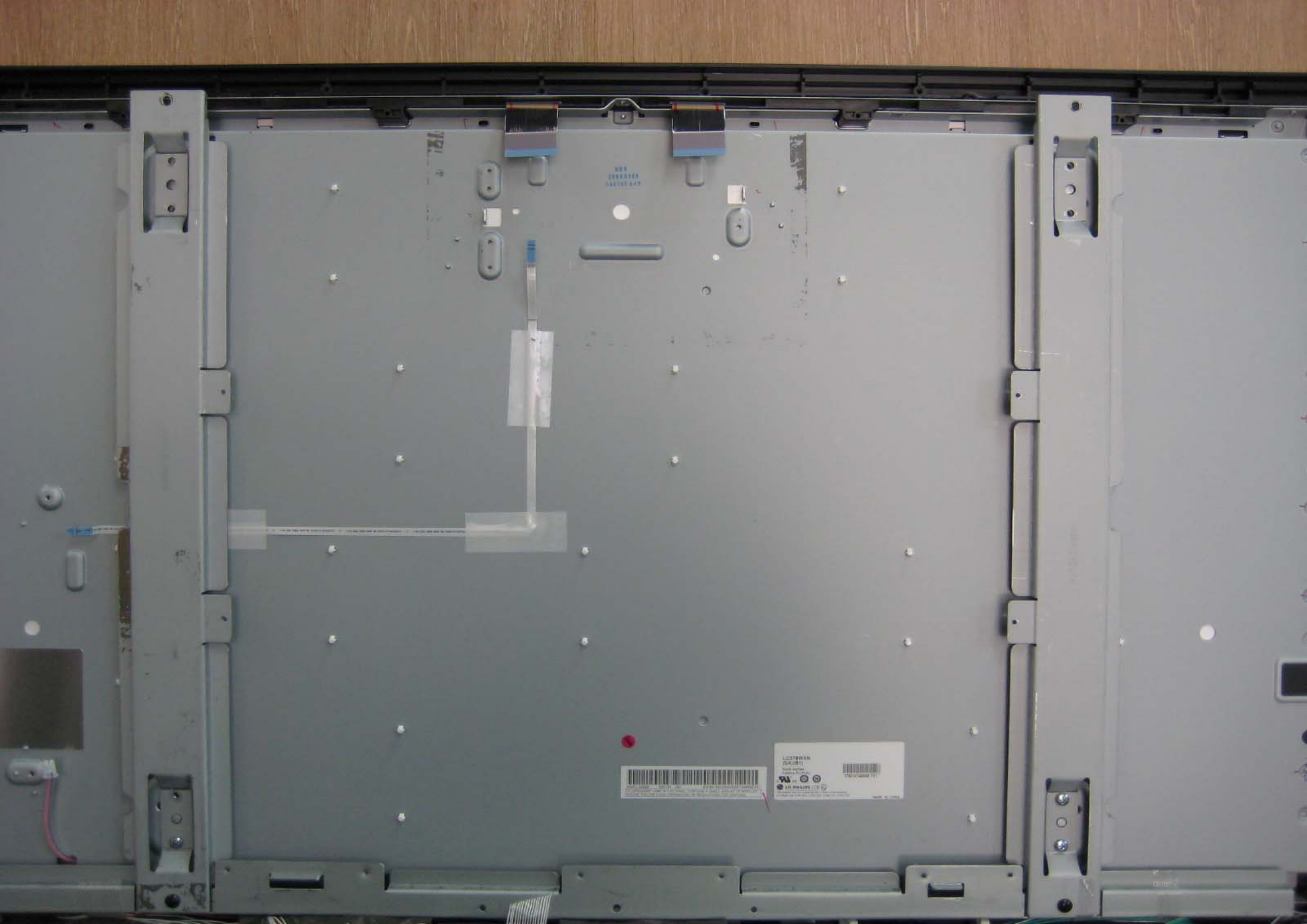
POWER

A rectangular metal component, possibly a filter or attenuator, with a threaded connector on the left side. The component has a green label with black text. The label reads "TDVS - H707F" and ".703B2901". There are several small, rectangular cutouts on the right side of the component. The component is mounted on a green surface.

TDVS - H707F

.703B2901





MSI
DORVILLE
MAGNETIC



LCTRWAN
2AUB11
South Africa
© 2008
DELL PHILIPS LTD



LC370WXN
(SA)(B1)

RoHS Verified
Factory ID:LPLNJ



37081N1608609 F21



This product may be covered by one or more of the following
US Patent Nos. 5,041,823 ; 5,061,920 ; 5,280,371 ; 5,835,139

MADE IN CHINA