



SWJ04

SWJ05

SWJ06

SWJ07

SWJ03

SWJ02

SWJ01

AV

MENU

VOL+

VOL-

CH+

CH-

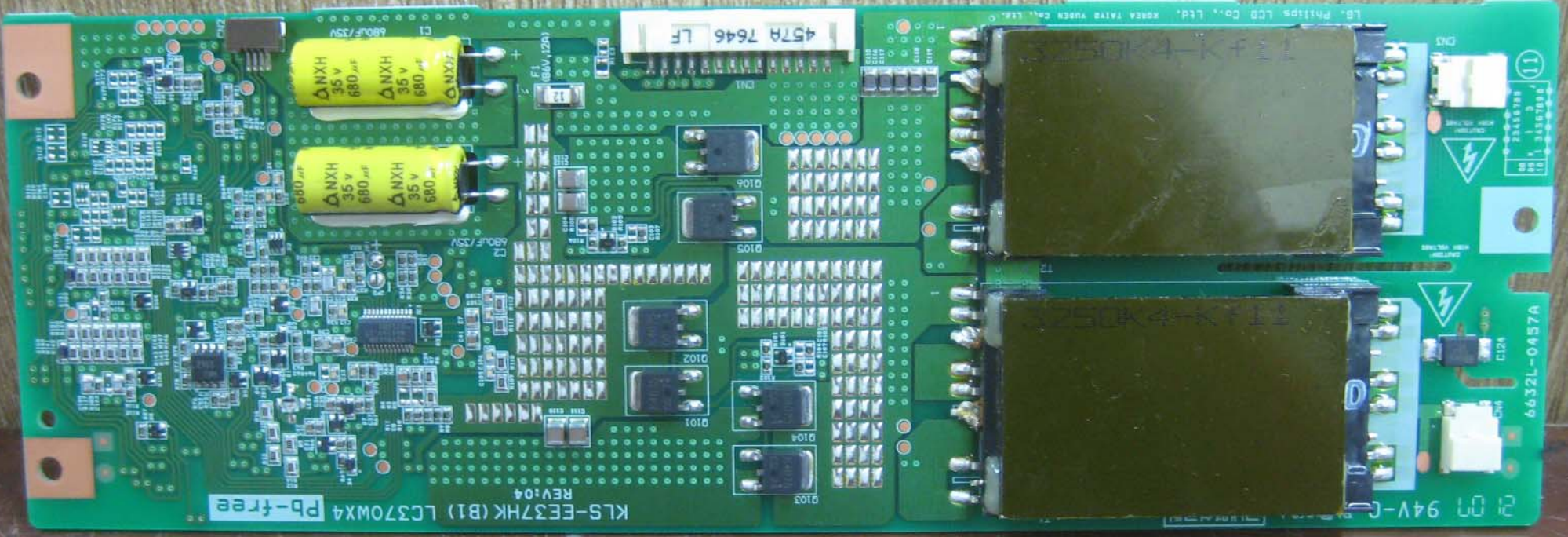
POWER

RCJ124

RCJ122

RCJ123

RCJ121



KLS-EE37H(B1) LC370WX4 Pb-free
REV:04

680µF 35V
680µF 35V
680µF 35V
680µF 35V

457A 7646 LF

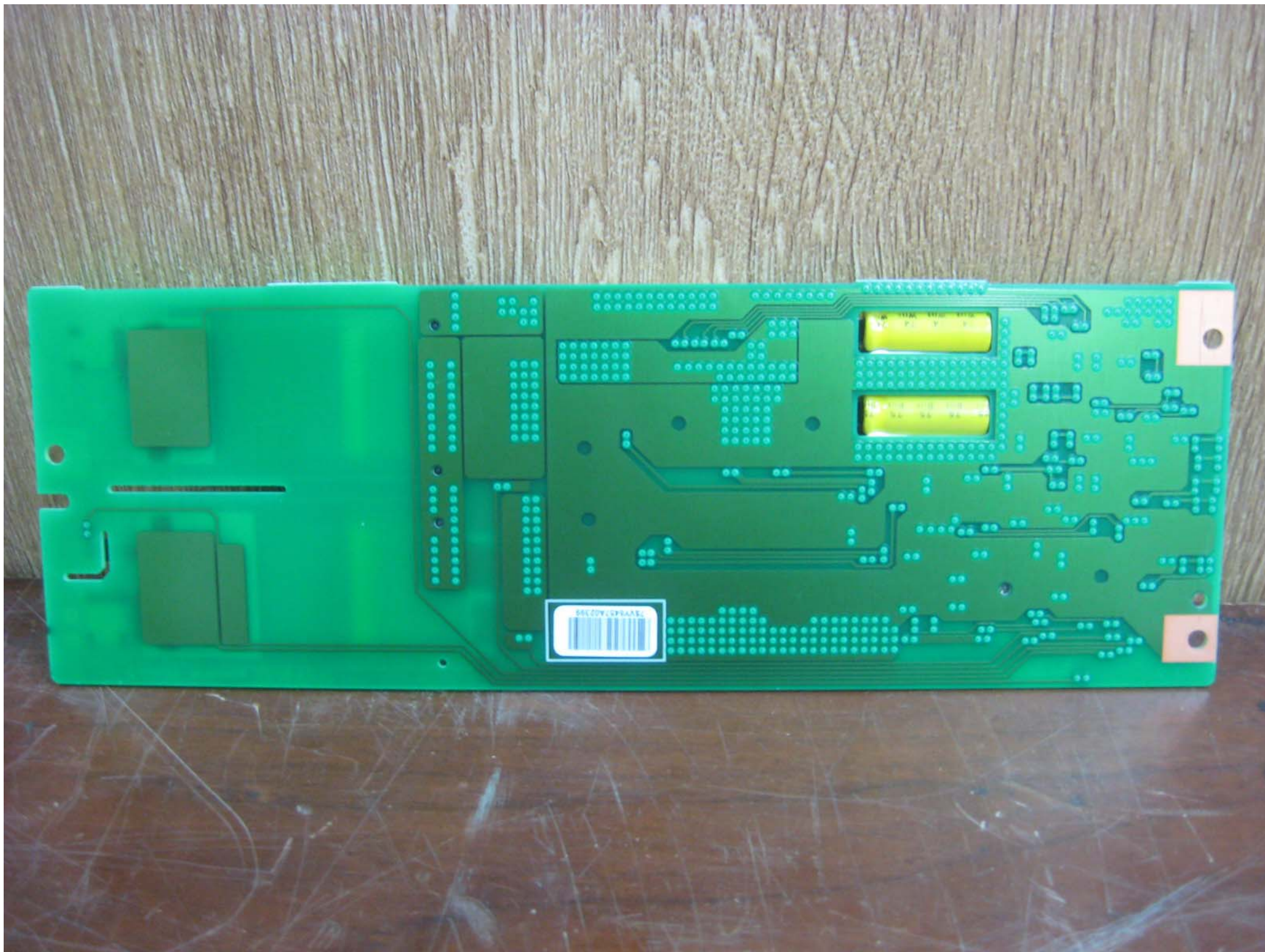
21 01 94V-C

6632L-0457A

LG, Philips LCD Co., Ltd., Korea Taichung, Korea

CAUTION
ELECTRIC SHOCK
Hazardous Voltage
Do not touch the LCD panel
or the PCB when power is
applied.





04C20V40P443
04C20V40P443

ASS'Y P/N [A-1-5]
6B612T

LG.Philips LCD Co.,Ltd
MODEL: LC370WX4-SLA1
P/N : 6870C-0158A
DESIGNED : 2007/04/03

ESMT
V12.03181A
L370WX4-SLA1
0710

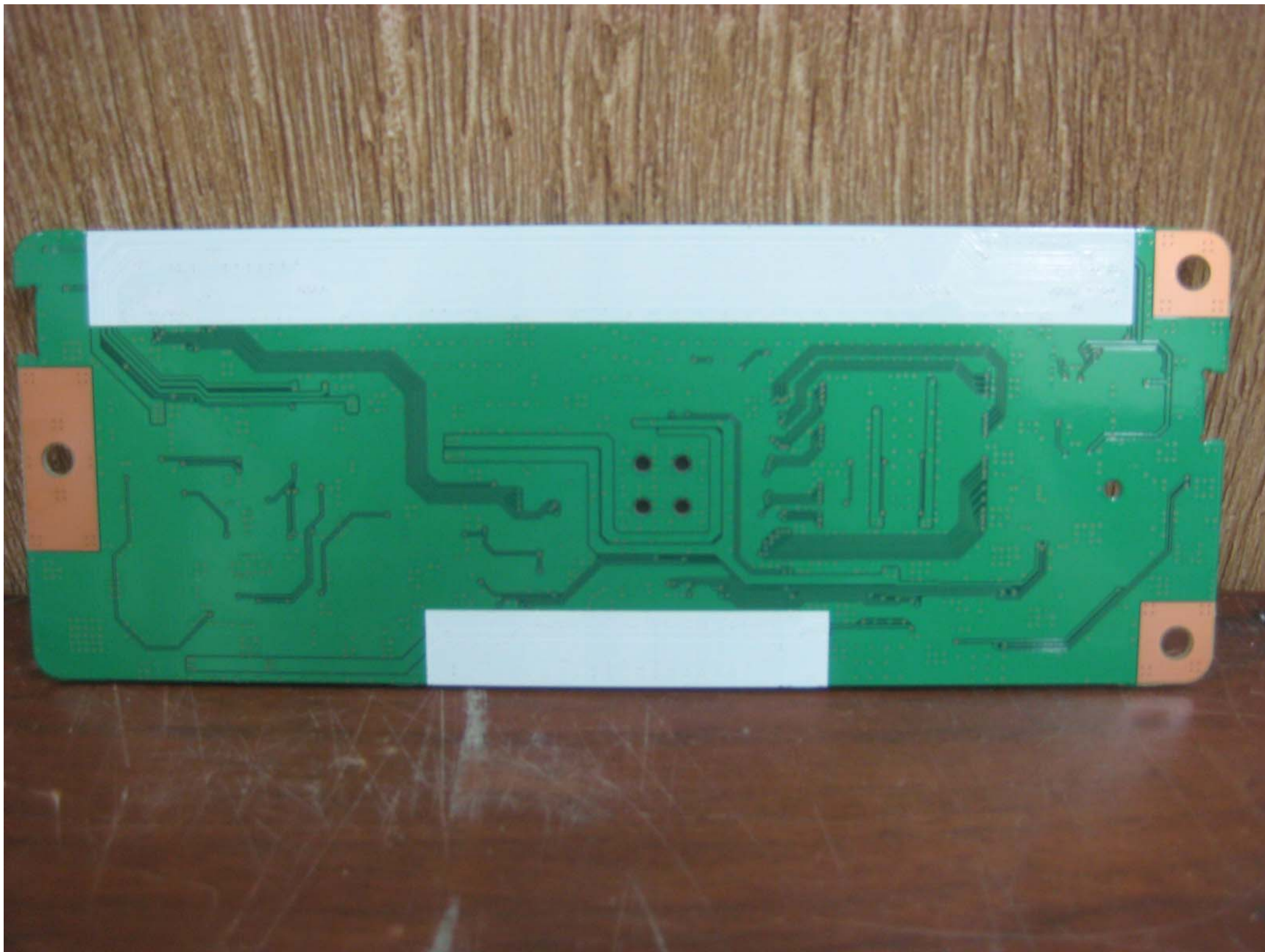
LG-PHILIPS LCD
R0A0102SAPP
D1H1L-00000
710100

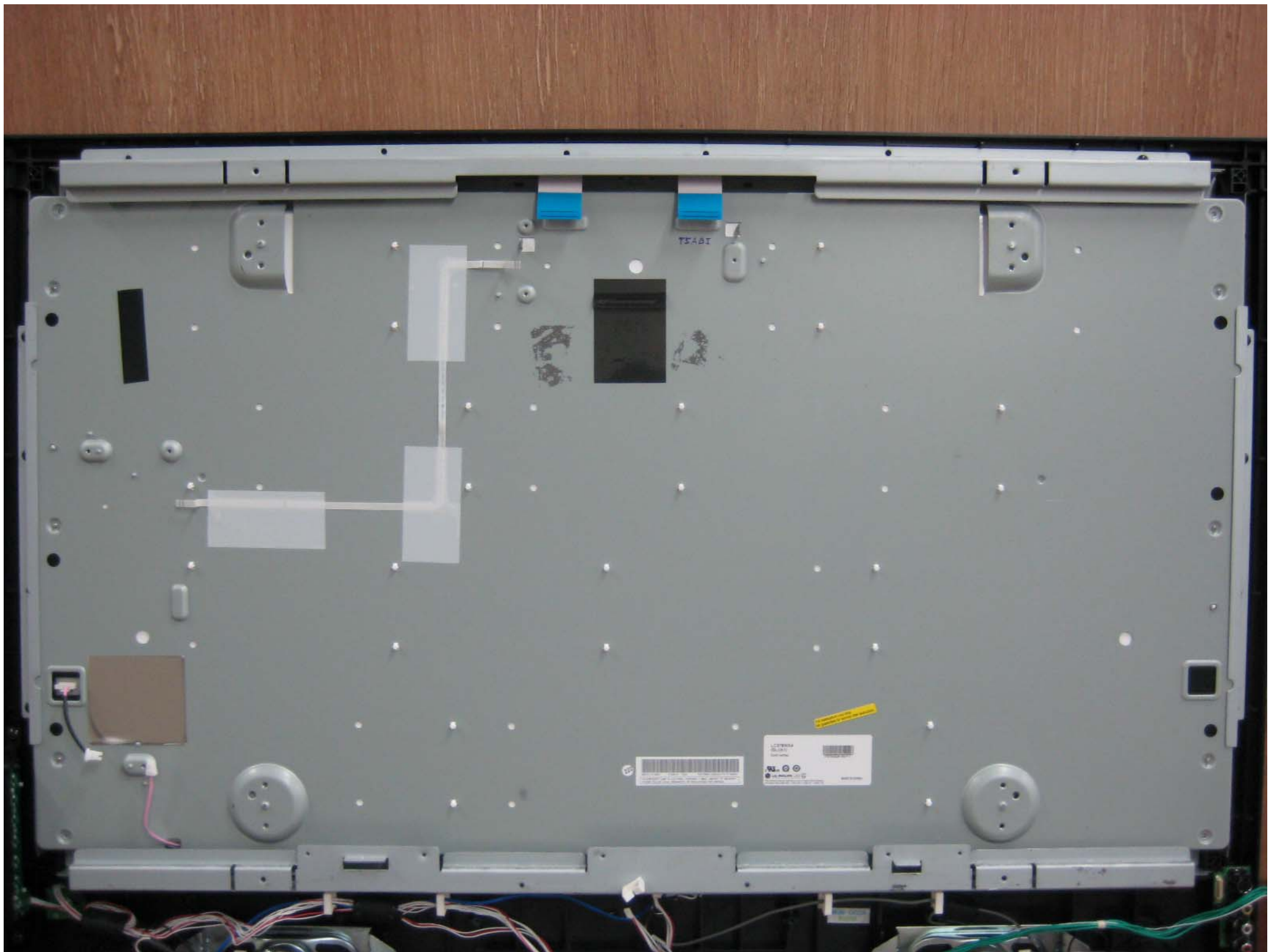
.220

.220

ebv

1.5A/63V





TEAST



L27854
2011-07-11
1.5L 1.5L
1.5L 1.5L
1.5L 1.5L

Yellow label with illegible text

For
No guarantee

LC370WX4
(SL)(A1)

RoHS Verified



37076KZQ01359 F11



LG.PHILIPS LCD



MADE IN KOREA

This product may be covered by one or more of the following
US Patent Nos. 5,041,823 ; 5,061,920 ; 5,280,371 ; 5,835,139

TDVS - H707F
.703B2901



