

37P65542MA-LPP
ATSC Converter BOX

D2ASTB_070929

IC101

IC201

IC202

IC203

P703

RA201 RA202

RA203 RA204

RA205 RA206

RA207 RA208

RA209 RA210

RA211 RA212

RA213 RA214

RA215 RA216

RA217 RA218

RA219 RA220

RA221 RA222

RA223 RA224

RA225 RA226

RA227 RA228

RA229 RA230

RA231 RA232

RA233 RA234

RA235 RA236

RA237 RA238

RA239 RA240

RA241 RA242

RA243 RA244

RA245 RA246

RA247 RA248

RA249 RA250

RA251 RA252

RA253 RA254

RA255 RA256

RA257 RA258

RA259 RA260

RA261 RA262

RA263 RA264

RA265 RA266

RA267 RA268

RA269 RA270

RA271 RA272

RA273 RA274

RA275 RA276

RA277 RA278

RA279 RA280

RA281 RA282

RA283 RA284

RA285 RA286

RA287 RA288

RA289 RA290

RA291 RA292

RA293 RA294

RA295 RA296

RA297 RA298

RA299 RA300

RA301 RA302

RA303 RA304

RA305 RA306

RA307 RA308

RA309 RA310

RA311 RA312

RA313 RA314

RA315 RA316

RA317 RA318

RA319 RA320

RA321 RA322

RA323 RA324

RA325 RA326

RA327 RA328

RA329 RA330

RA331 RA332

RA333 RA334

RA335 RA336

RA337 RA338

RA339 RA340

RA341 RA342

RA343 RA344

RA345 RA346

RA347 RA348

RA349 RA350

RA351 RA352

RA353 RA354

RA355 RA356

RA357 RA358

RA359 RA360

RA361 RA362

RA363 RA364

RA365 RA366

RA367 RA368

RA369 RA370

RA371 RA372

RA373 RA374

RA375 RA376

RA377 RA378

RA379 RA380

RA381 RA382

RA383 RA384

RA385 RA386

RA387 RA388

RA389 RA390

RA391 RA392

RA393 RA394

RA395 RA396

RA397 RA398

RA399 RA400

RA401 RA402

RA403 RA404

RA405 RA406

RA407 RA408

RA409 RA410

RA411 RA412

RA413 RA414

RA415 RA416

RA417 RA418

RA419 RA420

RA421 RA422

RA423 RA424

RA425 RA426

RA427 RA428

RA429 RA430

RA431 RA432

RA433 RA434

RA435 RA436

RA437 RA438

RA439 RA440

RA441 RA442

RA443 RA444

RA445 RA446

RA447 RA448

RA449 RA450

RA451 RA452

RA453 RA454

RA455 RA456

RA457 RA458

RA459 RA460

RA461 RA462

RA463 RA464

RA465 RA466

RA467 RA468

RA469 RA470

RA471 RA472

RA473 RA474

RA475 RA476

RA477 RA478

RA479 RA480

RA481 RA482

RA483 RA484

RA485 RA486

RA487 RA488

RA489 RA490

RA491 RA492

RA493 RA494

RA495 RA496

RA497 RA498

RA499 RA500

RA501 RA502

RA503 RA504

RA505 RA506

RA507 RA508

RA509 RA510

RA511 RA512

RA513 RA514

RA515 RA516

RA517 RA518

RA519 RA520

RA521 RA522

RA523 RA524

RA525 RA526

RA527 RA528

RA529 RA530

RA531 RA532

RA533 RA534

RA535 RA536

RA537 RA538

RA539 RA540

RA541 RA542

RA543 RA544

RA545 RA546

RA547 RA548

RA549 RA550

RA551 RA552

RA553 RA554

RA555 RA556

RA557 RA558

RA559 RA560

RA561 RA562

RA563 RA564

RA565 RA566

RA567 RA568

RA569 RA570

RA571 RA572

RA573 RA574

RA575 RA576

RA577 RA578

RA579 RA580

RA581 RA582

RA583 RA584

RA585 RA586

RA587 RA588

RA589 RA590

RA591 RA592

RA593 RA594

RA595 RA596

RA597 RA598

RA599 RA600

RA601 RA602

RA603 RA604

RA605 RA606

RA607 RA608

RA609 RA610

RA611 RA612

RA613 RA614

RA615 RA616

RA617 RA618

RA619 RA620

RA621 RA622

RA623 RA624

RA625 RA626

RA627 RA628

RA629 RA630

RA631 RA632

RA633 RA634

RA635 RA636

RA637 RA638

RA639 RA640

RA641 RA642

RA643 RA644

RA645 RA646

RA647 RA648

RA649 RA650

RA651 RA652

RA653 RA654

RA655 RA656

RA657 RA658

RA659 RA660

RA661 RA662

RA663 RA664

RA665 RA666

RA667 RA668

RA669 RA670

RA671 RA672

RA673 RA674

RA675 RA676

RA677 RA678

RA679 RA680

RA681 RA682

RA683 RA684

RA685 RA686

RA687 RA688

RA689 RA690

RA691 RA692

RA693 RA694

RA695 RA696

RA697 RA698

RA699 RA700

RA701 RA702

RA703 RA704

RA705 RA706

RA707 RA708

RA709 RA710

RA711 RA712

RA713 RA714

RA715 RA716

RA717 RA718

RA719 RA720

RA721 RA722

RA723 RA724

RA725 RA726

RA727 RA728

RA729 RA730

RA731 RA732

RA733 RA734

RA735 RA736

RA737 RA738

RA739 RA740

RA741 RA742

RA743 RA744

RA745 RA746

RA747 RA748

RA749 RA750

RA751 RA752

RA753 RA754

RA755 RA756

RA757 RA758

RA759 RA760

RA761 RA762

RA763 RA764

RA765 RA766

RA767 RA768

RA769 RA770

RA771 RA772

RA773 RA774

RA775 RA776

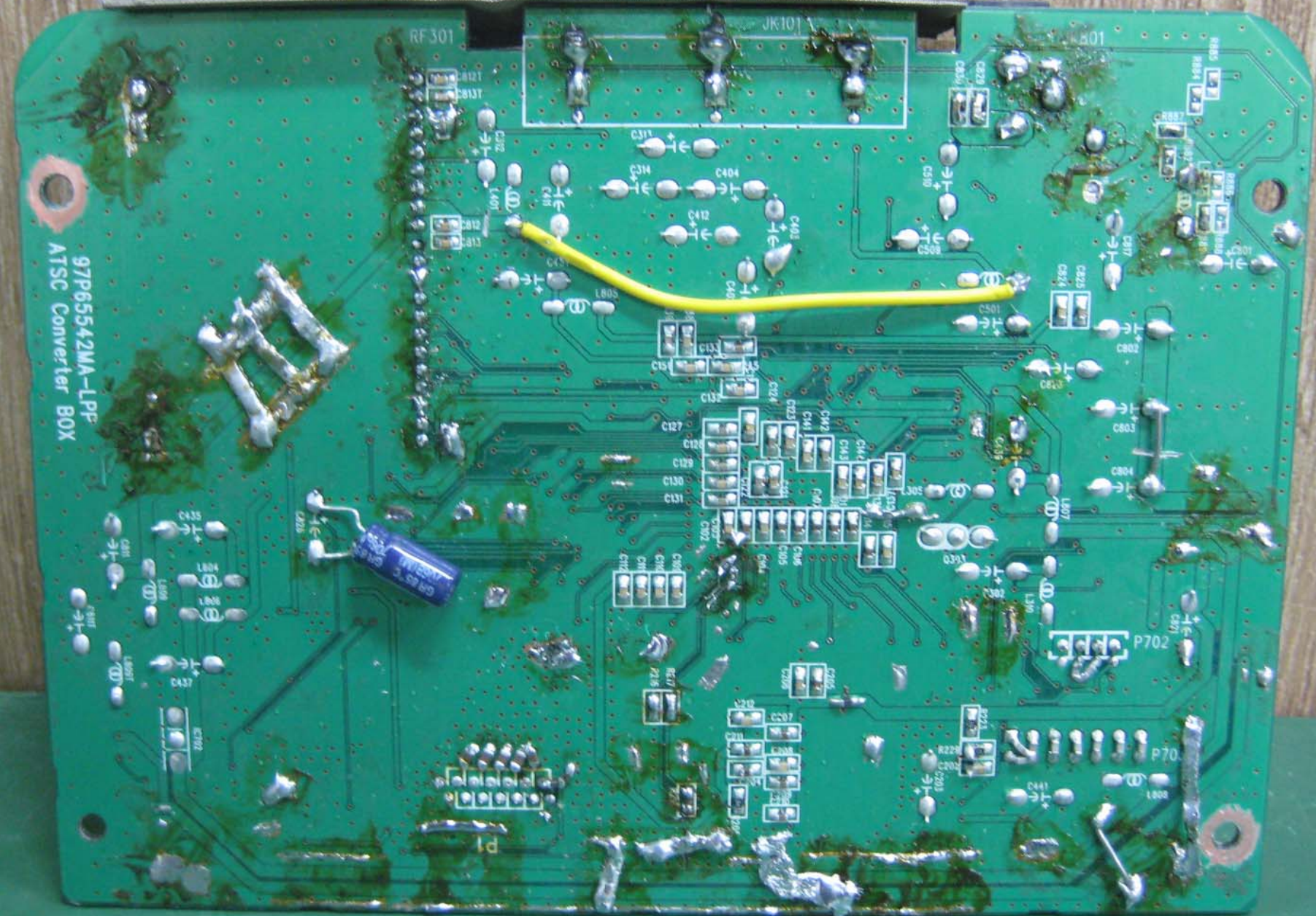
RA777 RA778

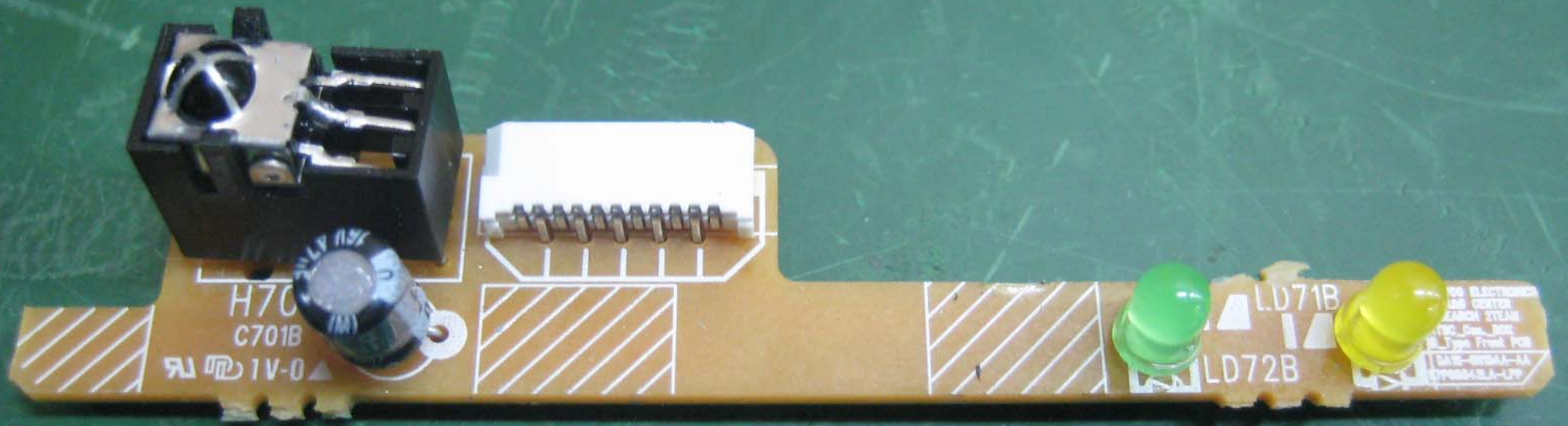
RA779 RA780

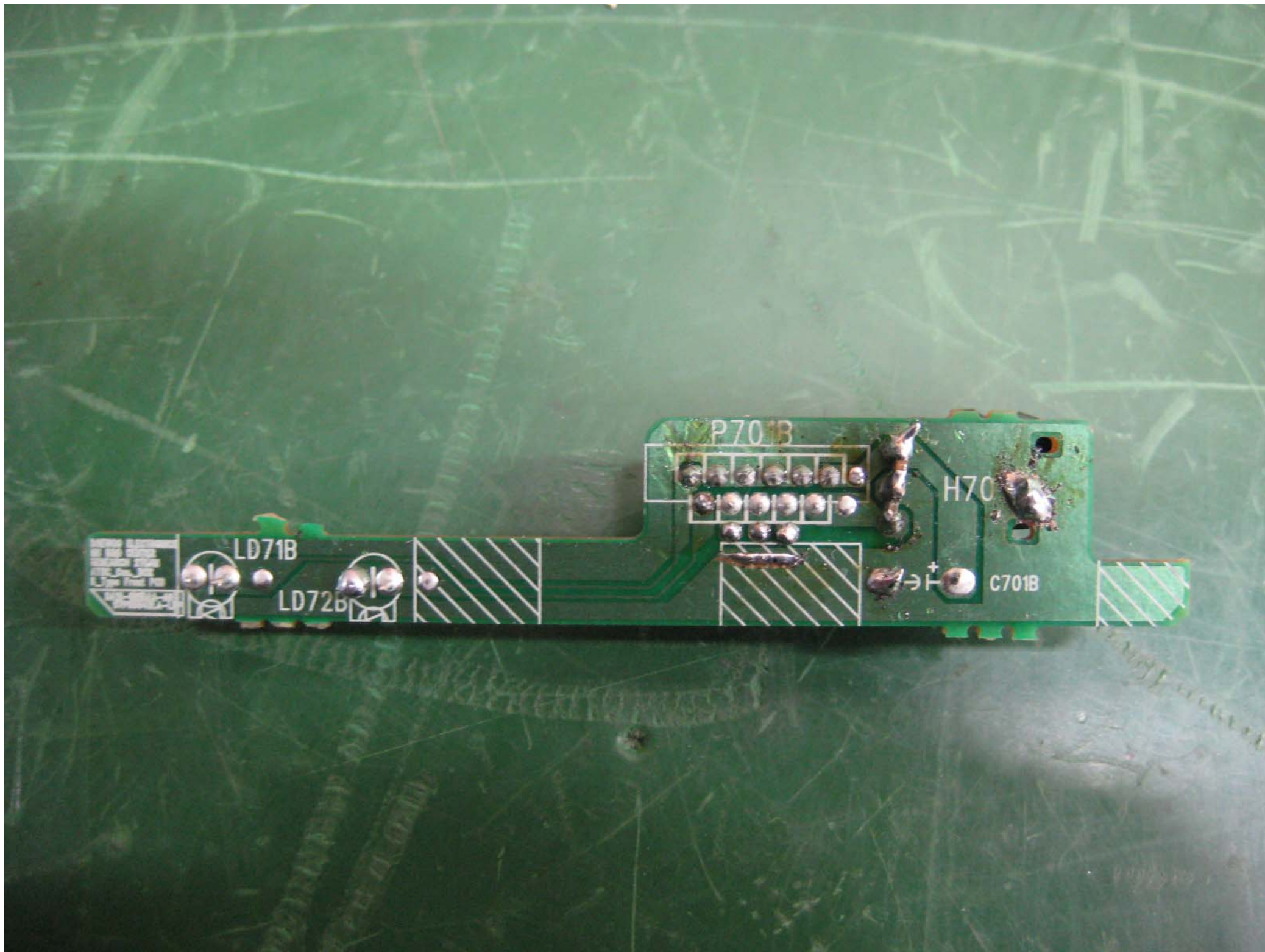
RA781 RA782

RA78

97P65542MA-LPP
ATSC Converter BOX







REVISION 1.0
DATE: 10/10/00
DESIGNED BY: J. J. J.
DRAWN BY: J. J. J.
CHECKED BY: J. J. J.
APPROVED BY: J. J. J.



LD71B

LD72B



P701B



H70

C701B

