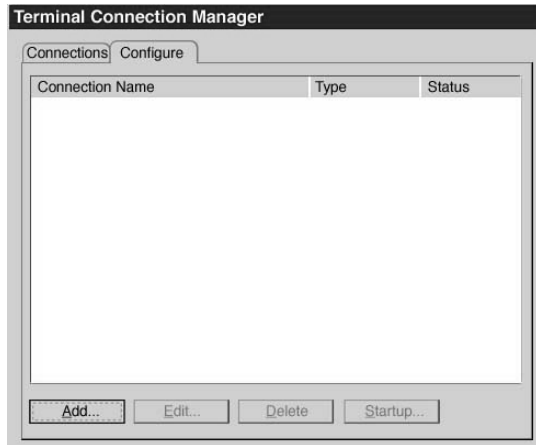
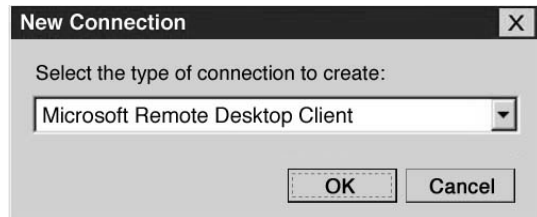


Adding new connection



If you click “Add” button, the following dialogue window appears so that you can choose the type of connection. As for the types of connections supported by the server, please ask the server/service manager.



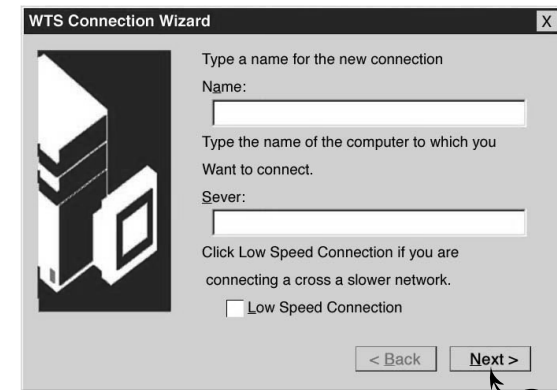
RDP connection wizard

Add Connection

If you choose Microsoft RDP, “WTS (Windows Terminal Server) Connection Wizard” appears as follows. “WTS Connection Wizard” begins as you click “Add Connection” and you have to fill out two pieces of information.

Name : This is the name of connection assigned by the user. It is convenient to use names such as “Operation Server” or “Production Server” which are easy to remember.

Server : This is the address of the server such as “www.sales.com” or “123.456.789.012.”



Please ask the Server/Service manager.



Automatic Connection to Server/Service

When automatic connection function is used, the user can be directly connected to the server which is frequently used when the terminal is on. To use this function, the following three data have to be typed.

Username : Username registered with the server/service.
Password : The password of the user.
Domain : The domain name of the server/service.



Please ask the Server/Service manager.

Automatic Execution of Application Programs

The user can choose the application program to be executed as soon as the terminal is connected to server/service. If “Desktop” is chosen, the regular background screen of Windows NT/Windows 2000 appears. If an application program is chosen, the program is directly executed at the startup. In this case, the user must specify the path of the application program.



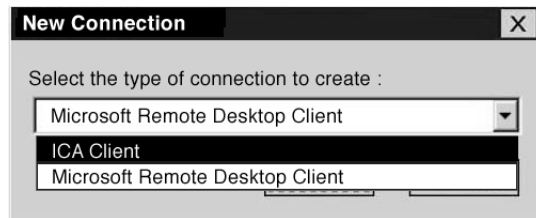
Finishing RDP Connection Wizard

If you click the “Finish” button, the WTS Connection Wizard ends and the new connection is added to the connection manager.



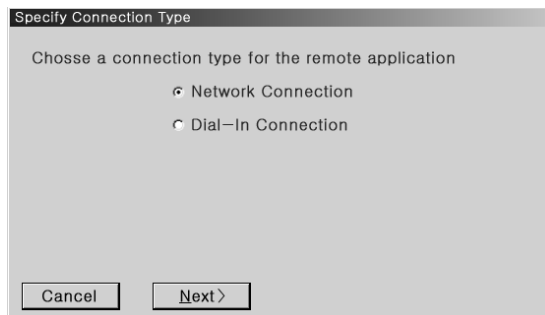
ICA connection wizard

You can choose the ICA Client at the “Terminal Connection Manager”.



Choosing the Connection Method

In this section, the method for connection to the server/service is chosen. Our terminal only supports “Network Connection.”



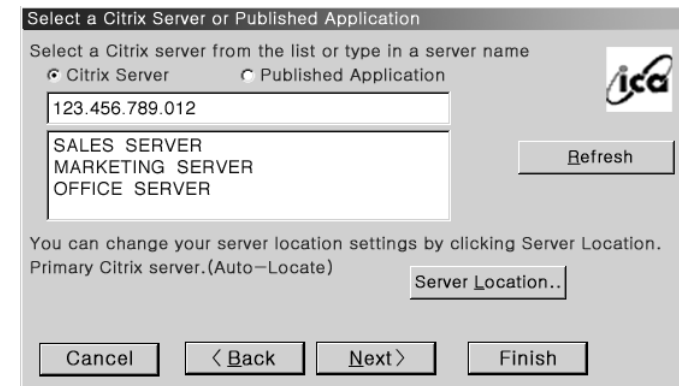
Network Connection : uses the direct connection line like LAN Connection.

Dial-in Connection : uses the modem.

Setting the Server

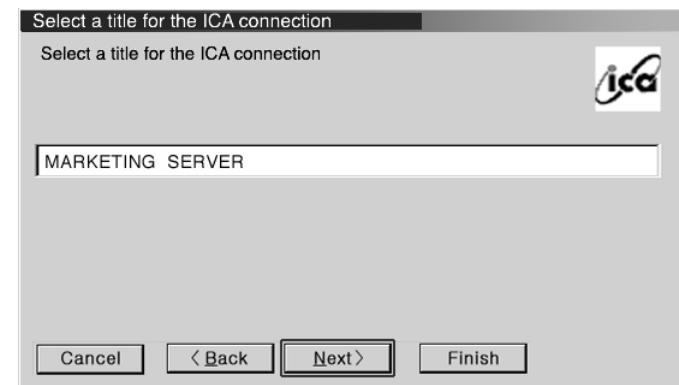
ICA Connection Wizard is equipped with a function to display all the servers that can be currently used by the network.

Please choose the server to be used among the servers displayed or type the server address yourself.



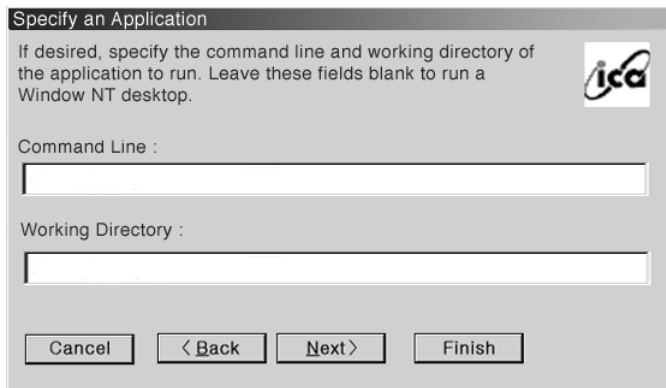
Choosing Connection Name

Connection name is given by the user. It is preferable to choose names such as “Operation Server” or “Marketing Server” which are easily remembered.



Automatic Execution of Application Programs

The user can choose the application program to be executed when the terminal is connected to the server/service. If the user does not specify the application program, the background screen of Windows NT/Windows 2000 appears. If an application program is chosen, the program is immediately executed. In this case, the location of the application program must be given.

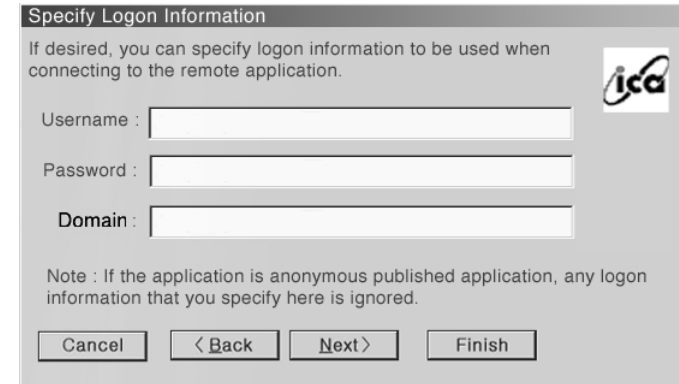


The dialog box titled "Specify an Application" contains the following text: "If desired, specify the command line and working directory of the application to run. Leave these fields blank to run a Window NT desktop." Below this text are two text input fields: "Command Line :" and "Working Directory :". At the bottom of the dialog are four buttons: "Cancel", "< Back", "Next >", and "Finish". An ICA logo is visible in the top right corner.

Automatic Connection to the Server/Service

If the automatic connection function is used, the terminal is directly connected to the frequently used server at the startup. To use this function, the following three data must be typed.

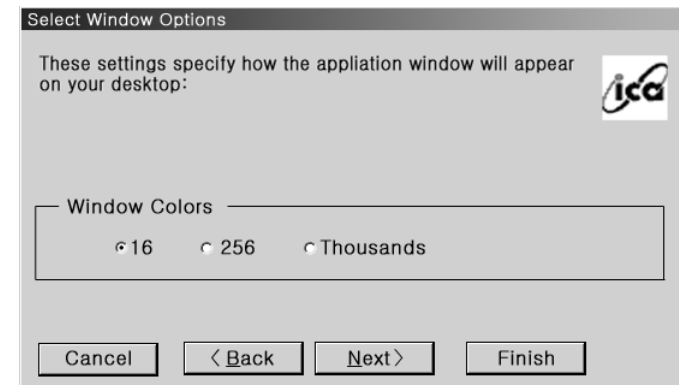
Username : Username registered with the server/service.
Password : The password of the user.
Domain : The domain name of the server/service.



The dialog box titled "Specify Logon Information" contains the following text: "If desired, you can specify logon information to be used when connecting to the remote application." Below this text are three text input fields: "Username :", "Password :", and "Domain :". A note at the bottom states: "Note : If the application is anonymous published application, any logon information that you specify here is ignored." At the bottom of the dialog are four buttons: "Cancel", "< Back", "Next >", and "Finish". An ICA logo is visible in the top right corner.

Choosing Colors

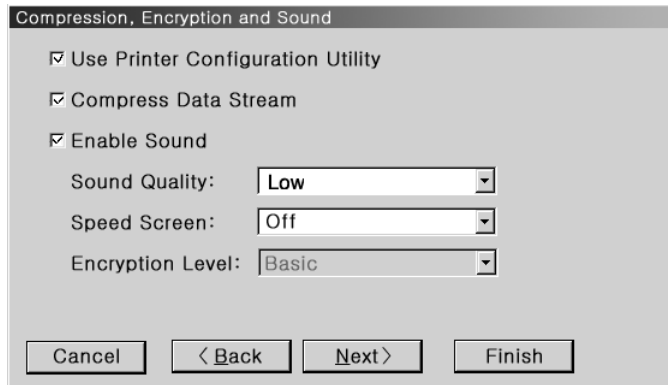
In this section, the user chooses the number of colors to be used by the ICA client.



The dialog box titled "Select Window Options" contains the following text: "These settings specify how the application window will appear on your desktop:". Below this text is a section labeled "Window Colors" with three radio button options: "16", "256", and "Thousands". At the bottom of the dialog are four buttons: "Cancel", "< Back", "Next >", and "Finish". An ICA logo is visible in the top right corner.

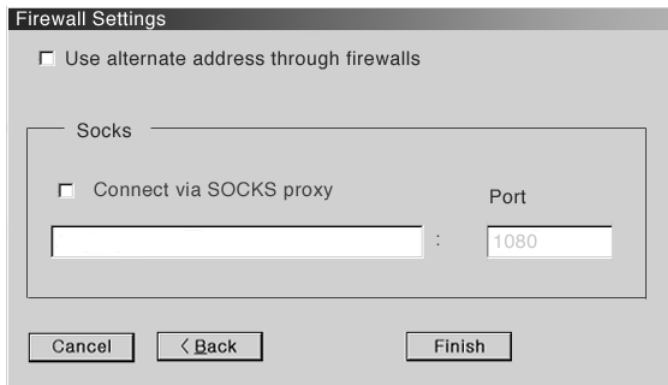
Data Compression and Sound

The user chooses whether he/she will use the data compression function and the sound function with the ICA client.



Firewall

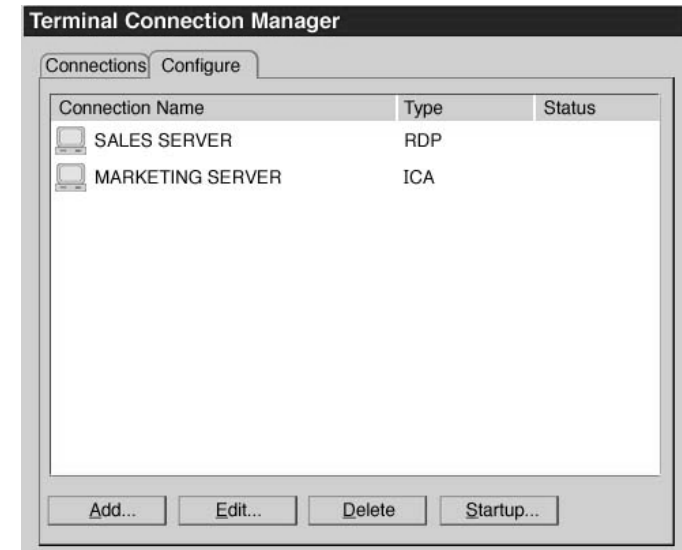
If the firewall is installed at the Network, the user offers necessary information.



Ask the Network manager.

When you have finished adding new connection...

If you have finished adding new connections by “RDP Connection Wizard” or “ICA Connection Wizard,” the following new connections are displayed. Therefore, from now on, you can double-click the connection to be used and you are connected to the server and implement desired operations.



Changing connection

From the “Configure” screen of the Terminal Connection Manger, please choose the connection to be changed and click the “Edit” button. The following is the screen that appears.

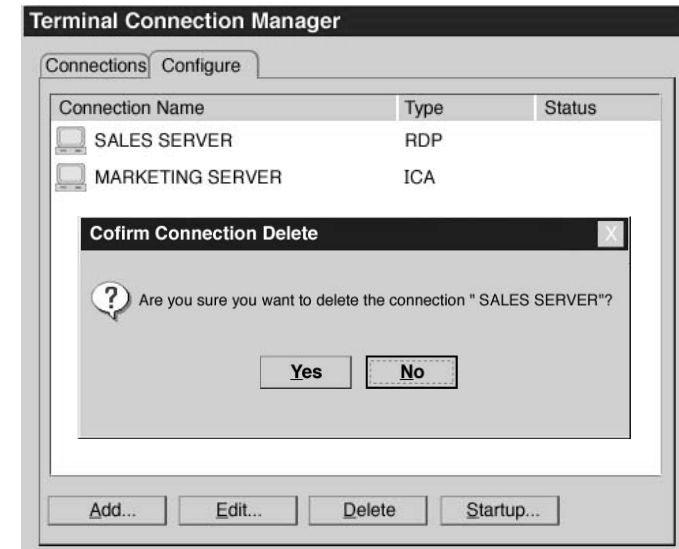
You can change “ICA” on the following screen and change details, as you click each tab.



Ask the Network manager.

Deleting connection

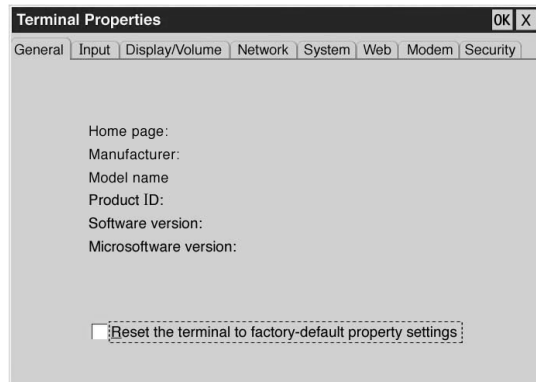
From the “Configure” screen of the Terminal Connection Manager, please choose the connection to be deleted and click the “Delete” button. Then, the following “Confirm Connection Delete” screen appears.



7. Terminal Setting

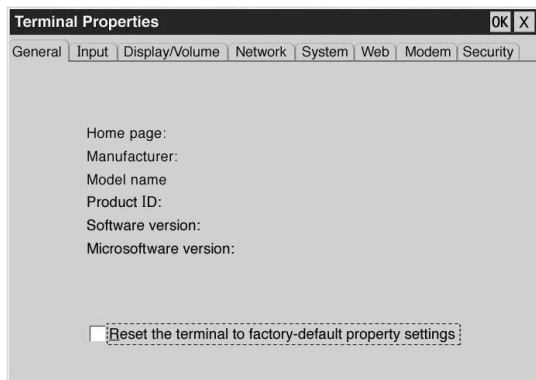
Starting terminal setting

When “Terminal Connection Manager” is on the screen, press F2 key and the following “Terminal Properties” screen appears and you can determine detailed aspects of the terminal. To end “Terminal Properties” and move to “Terminal Connection Manager” screen, press the “OK” button that is on the right side of the screen. If the “X” button is pressed, all new settings are cancelled.



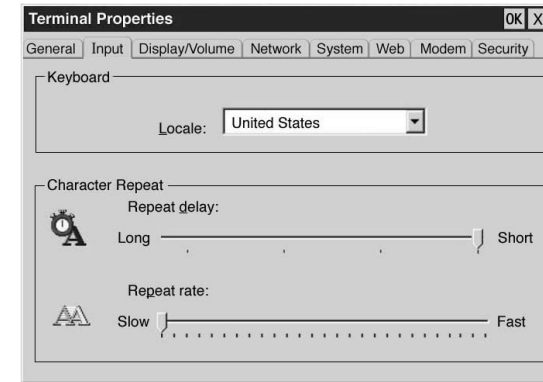
Product information

This section involves various types of information on the product. If you choose “Reset the terminal to factory-default property settings” all settings of the terminal are deleted and you return to the “Terminal Installation Wizard.”



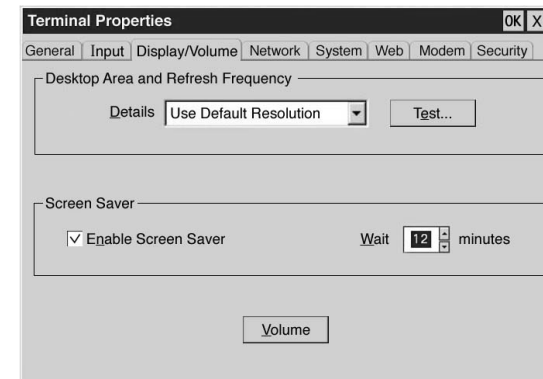
Keyboard

In this section, you decide the waiting time keyboard input and the repeat speed.



Screen and volume

In this section, you decide the display resolution, the volume size, etc.



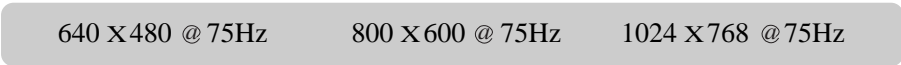
From the “Resolution & Frequency” list, you can choose the intended resolution and frequency. If you press the “Test” button, the following dialogue window appears.



Press the “OK” button on the dialogue window and the terminal restarts at the resolution and frequency chosen. And the following dialogue window appears to check whether the monitor supports the resolution and frequency. If the following dialogue window does not appear your monitor does not support the resolution and frequency chosen. If you press the “PASS” button, the monitor is reset at the new resolution. If you press “FAIL” the monitor returns to the previous resolution.



The following are the resolutions and frequencies supported by the terminal.

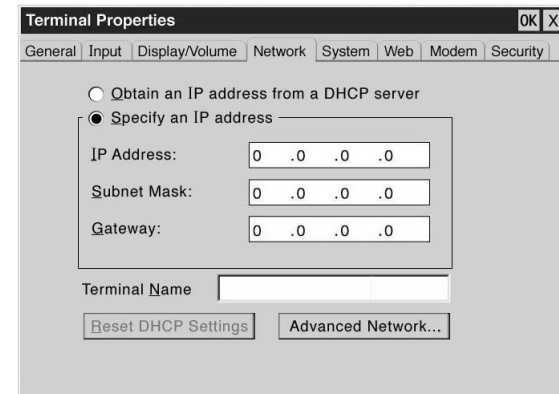


If you choose “Use Screensaver,” the monitor is protected as the screensaver function is executed if the terminal has not in use for a predetermined period.

In addition, if you press the “Volume” button, it is possible to adjust the size of volume out from the terminal.

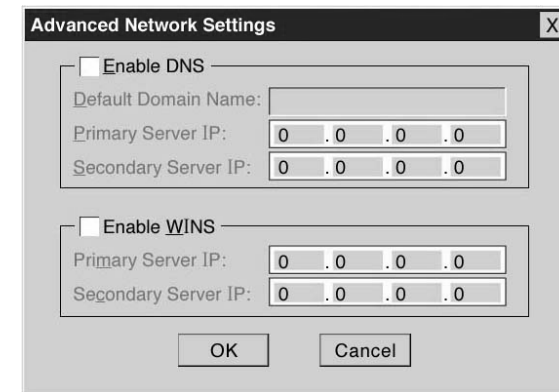
Network

This section is for setting various options on the Network.



Ask the Network manager.

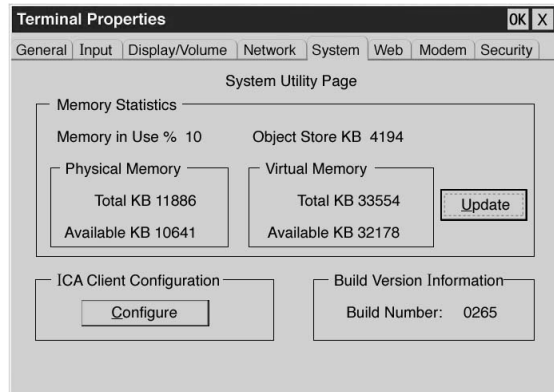
If you choose “Specify an IP address” the “Advanced Network Settings” button is activated. Then, if you press the “Advanced Network Settings” button, the following screen appears and you can offer necessary information.



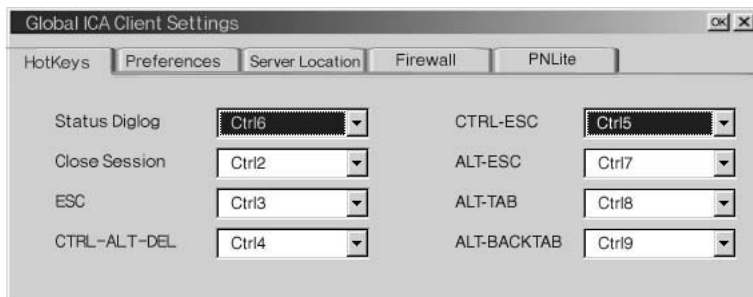
Ask the Network manager.

System

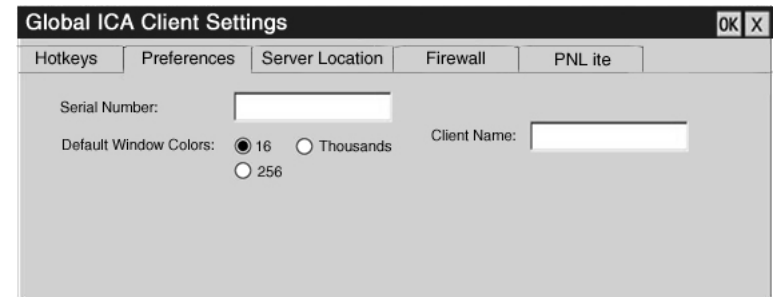
In this section, you indicate various items related to the system and set the basic configuration for the ICA client.



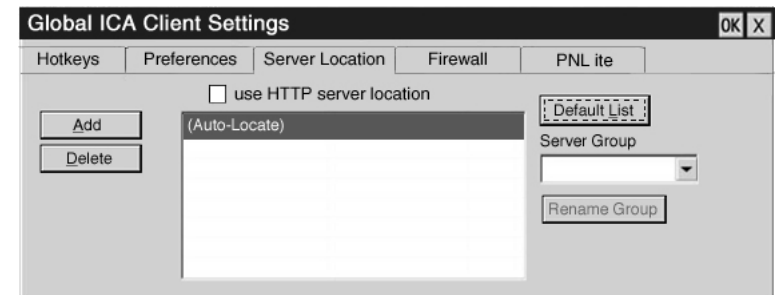
From the “ICA Client Configuration” press “Configure” button and then the following dialogue window appears. Now you can choose options wanted.



This option is about Hot keys. They are defined on the Operating System or the application program. Also, the user can set them to activate a specific order.



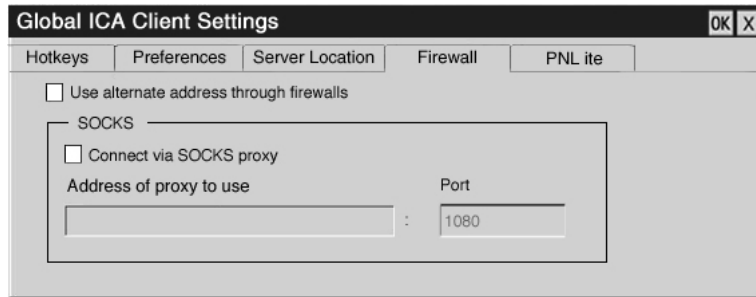
In this option, you input the Terminal name and colors to be used at the “ICA Client Configuration” and choose colors among 3 types (16, 256 and thousands of colors). It's good to select a significant Client Name. The Client Name recognizes the Terminal at the network.



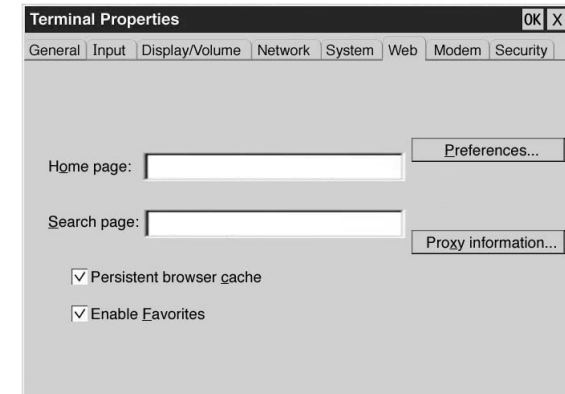
In this option, you select the server that you want to connect. If you use LAN, you select one from the server list that is displayed automatically. If you want to connect the server that is not in the server list, press “ADD” button and input the Domain Name or IP address.

Web setting

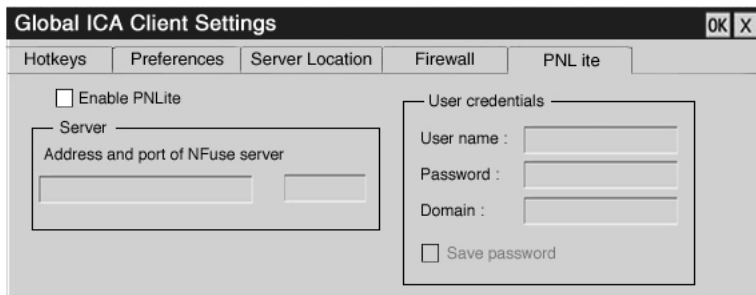
In this section, various items related to the web-browser are set.



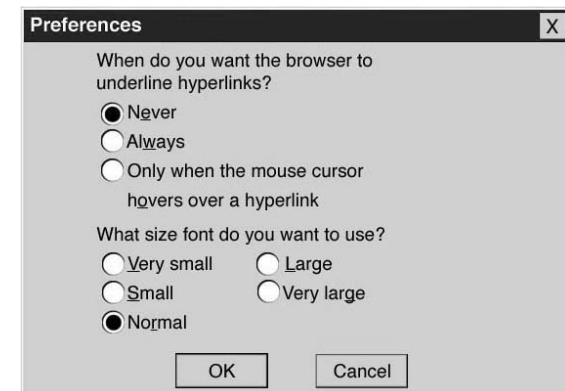
If the SOCKS Proxy server is installed at the network, IP address of the Proxy server has to be typed. So you select the SOCKS Proxy server connection and input the port number and IP address of the SOCKS Proxy server.



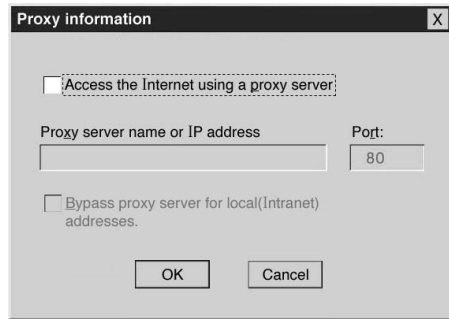
Press the “Preferences” button and the following dialogue window appears. The display method for hyperlinks and default font size can be decided.



If the Nfuse server of Citrix Company is installed, various options related to the Nfuse server have to be typed.



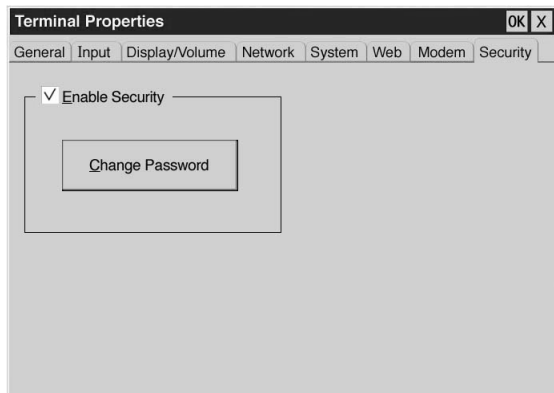
If the “Proxy Information” button is pressed, the following dialogue window appears and various items related to the proxy server can be set.



Ask the Network manager.

Terminal security

This section is for the setting of terminal security that is necessary to protect the contents of various terminal settings. Press the “Change Password” button to change the password for the terminal setting. If a password is in place, the contents of terminal setting cannot be changed without typing the correct password.



Press the “Change Password” button and the following dialogue window appears. Then it is possible to change the password. For verification, the password must be typed twice.

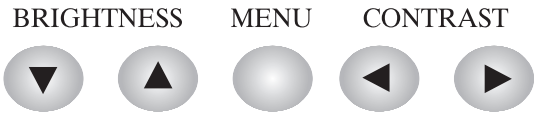


When the password for terminal security is in place, press F2 key for “Terminal Setting.” Then the following dialogue window for password verification appears. The user must type the correct password to use the “Terminal Setting” function.



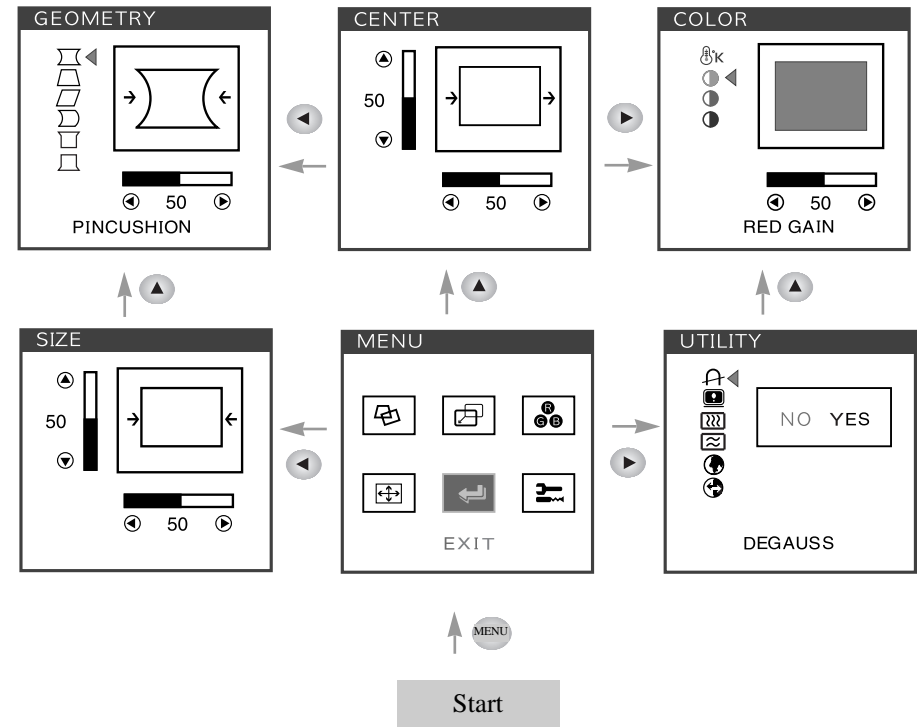
Because the terminal cannot be reset if the password is lost, it is necessary to handle the password with care.

8. OPERATION & ADJUSTMENT



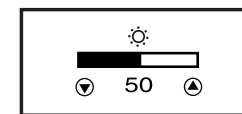
- Move cursor to the right window on the OSD window.
 - Increase the value of any selected function.
- Move cursor to the left window on the OSD window.
 - Decrease the value of any selected function.
- Launch OSD(On-Screen Display) MENU window.
- Move cursor to the high window on the OSD window.
 - Increase the value of V.size or V.center.
- Move cursor to the low window on the OSD window.
 - Decrease the value of V.size or V.center.

Key Process

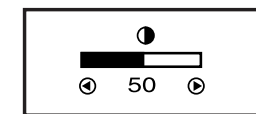


Hot Key

BRIGHTNESS



CONTRAST



9. SPECIFICATIONS

Terminal

C P U	NS Geode GX-1 233 MHz
Memory	8/16M Flash Memory 16/32M RAM
Video	Maximum Resolution 1024x768 Maximum 16 bit Color
Audio	CD-level sound - 16 bit 44.1 KHz Stereo External speakers - 1/8 inch mini-jack External microphone - 1/8 inch mini-jack Built-in speakers - 8 OHM 1.75 W
Keyboard	PS/2 Type Keyboard
Mouse	PS/2 Type Mouse
Network	10/100 BaseT Ethernet RJ-45 Connector
I/O Interface	2 PS/2 Port 2 USB Port (Type A) 1 RS-232C Serial Port (DB-9) 1 Printer Port (DB-25)
Software	Microsoft Windows CE 2.12 (Including Direct X) Microsoft RDP Client Citrix ICA Client Win CE MS Internet Explorer 4.01 Win CE MS Windows Media Player 6.4

Monitor

CDT Size	17-inch	
Diagonal visible image area	16.2-inch	
Dot Pitch	0.28 mm	
Synchronization	Horizontal	30 - 70 KHz
	Vertical	50 - 160 Hz
Plug and Play	DDC1/2B/CI	
Power Saving	EPA, VESA DPMS, Nutek Compliant	
Power Source	100-240 Vac, 50/60Hz (Free Voltage)	
Power Consumption	85 W	
Dimension-W x H x D (set with stand)	420 x 440 x 440 mm	
Weight-unpacked (lbs/Kg)	37.0/16.8	
Operating Temperature	10 ~ 40 °C / 50 ~ 104 °F	
User Control	Contrast (Hot Key) Brightness (Hot Key) H/V Size, H/V Center, Pincushion, Trapezoid, Temperature, Pin Balance, Parallelogram, Pin Corner, RGB Gain, Status, Degauss, H/V Moire, Recall, 5 languages (Eng. Deu. Fra. Esp. Ita.)	

10. TROUBLESHOOTING

Symptom	Check
No picture.	Check if power switch and computer power switch are in the on position.
POWER LED is not lit.	Check if power switch is in the on position. ↓ Check if the power cord is correctly connected.
Image is not centered, too small or too large.	Adjust H&V Size or H&V Center to get the proper image.
Picture bounces or a wave pattern is present in the picture.	Keep the devices that may cause electrical interference away from the monitor. ↓ See the FCC information at the front cover of the manual.
Color looks blotchy.	Operate Degauss once.
Picture is blurred.	Adjust Contrast and Brightness. ↓ Operate Degauss once.
Edges of available area on the screen are not straight.	Adjust Geometry Control (Pincushion, Trapezoid..).