

Daewoo Electronics LPP Ver-1.0  
2001. 10. 19

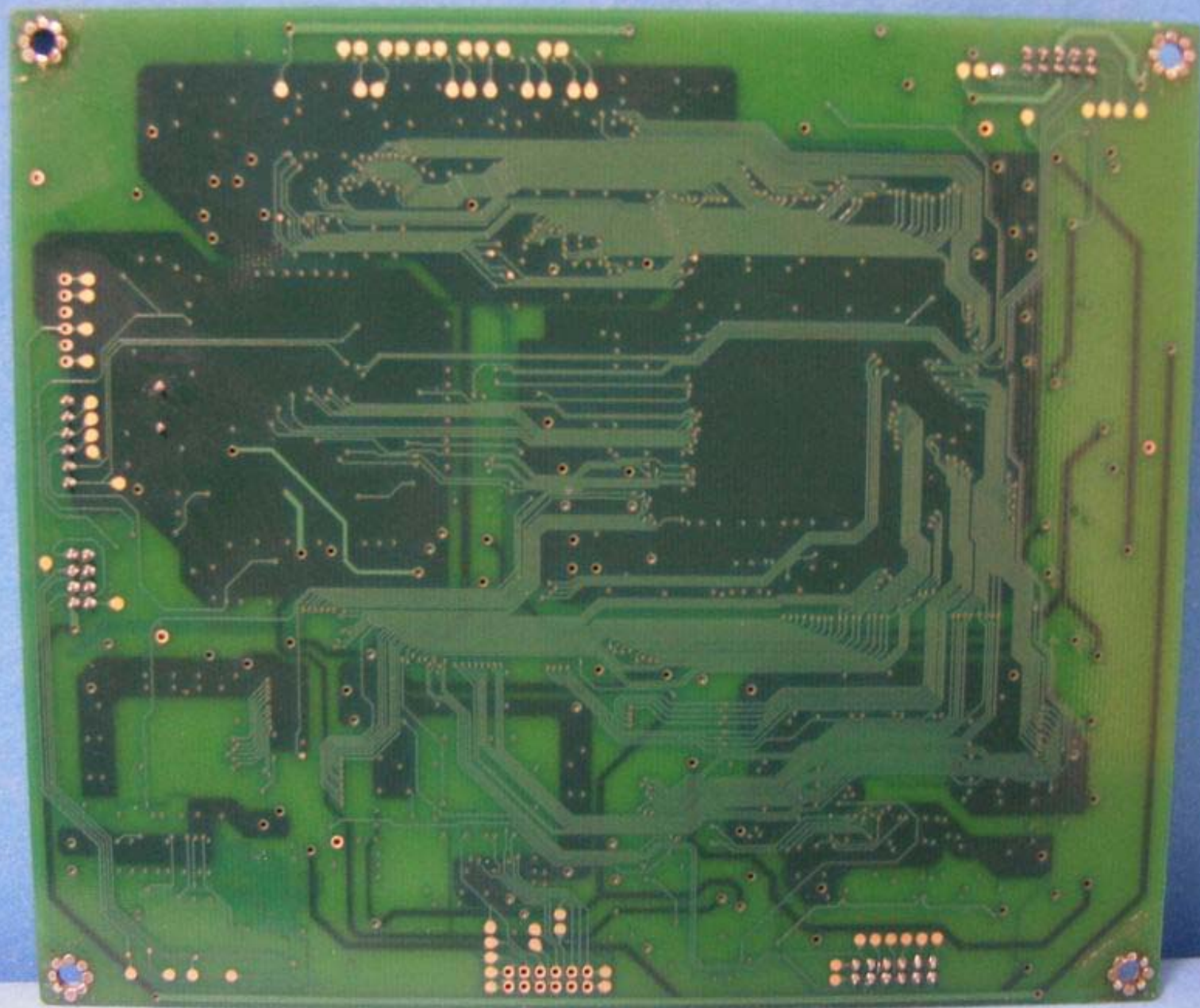
T0123  
ALPORA SYSTEMS  
PRO621A10A

AVAGO  
DEVICES  
AD984A  
KS-140  
SG107473  
0040

CREATED IN  
HONGKONG  
NO. 304

COM1 DVI-D AV

TV







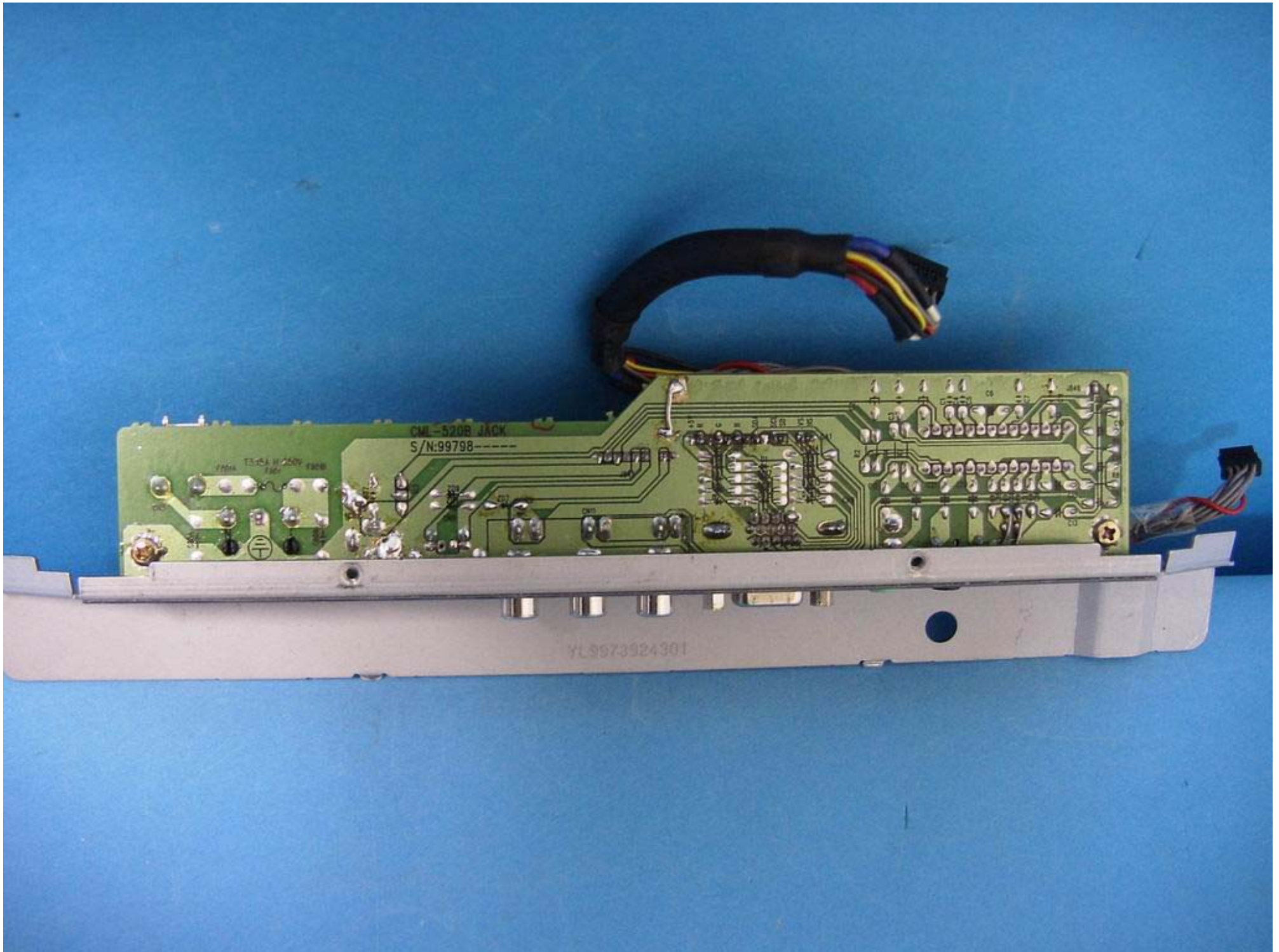


CML-520B JACK  
S/N: 99798

CAUTION: FOR COMPACT PROTECTION AGAINST  
SHOCK AND VIBRATION

The PCB contains several key components: a large black integrated circuit (IC) on the left; a blue component, likely a transformer or inductor, in the center; a large black component, possibly a transformer or inductor, on the right; and various passive components like resistors and capacitors scattered across the board. A bundle of multi-colored wires is connected to the board.





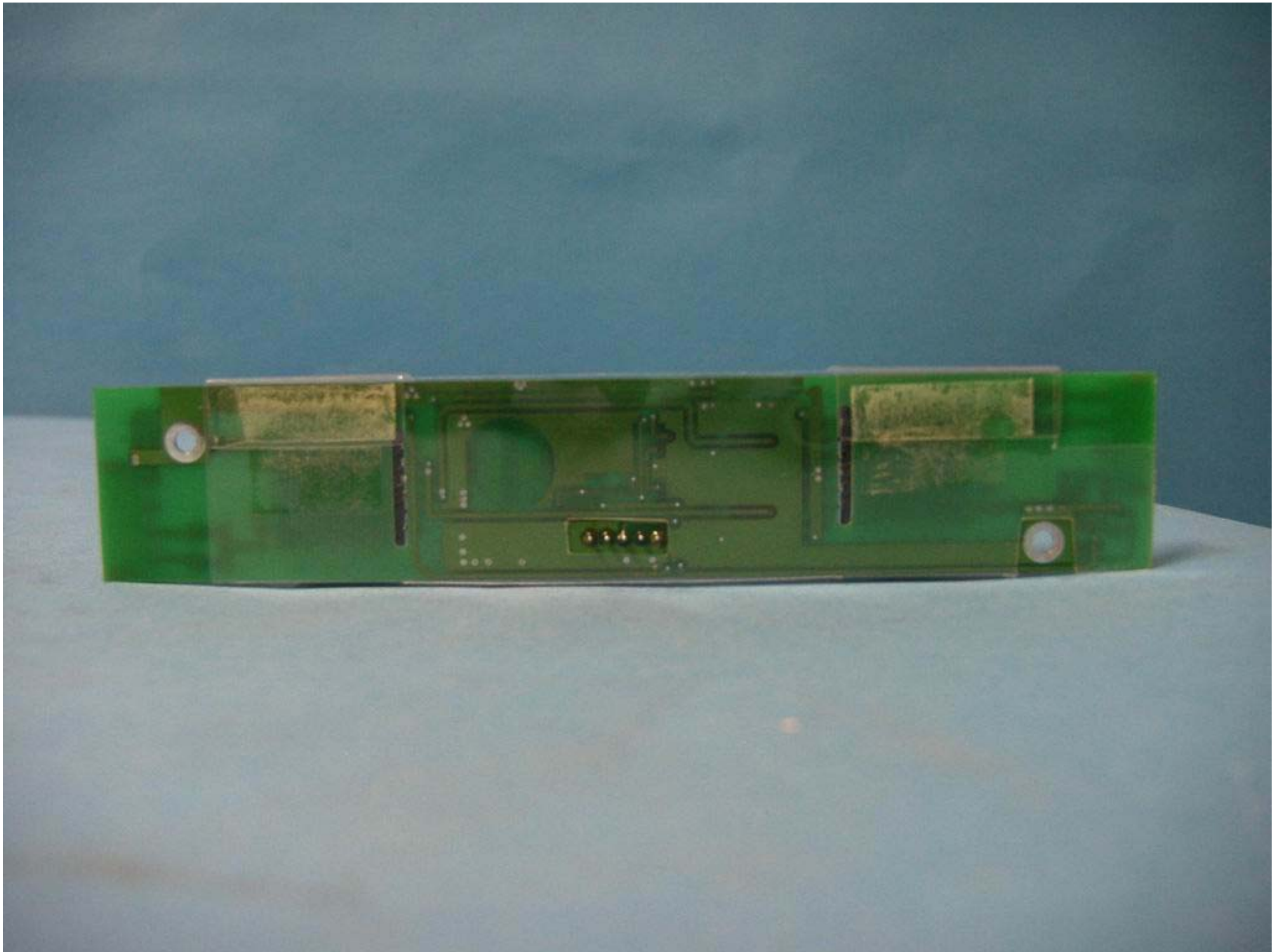


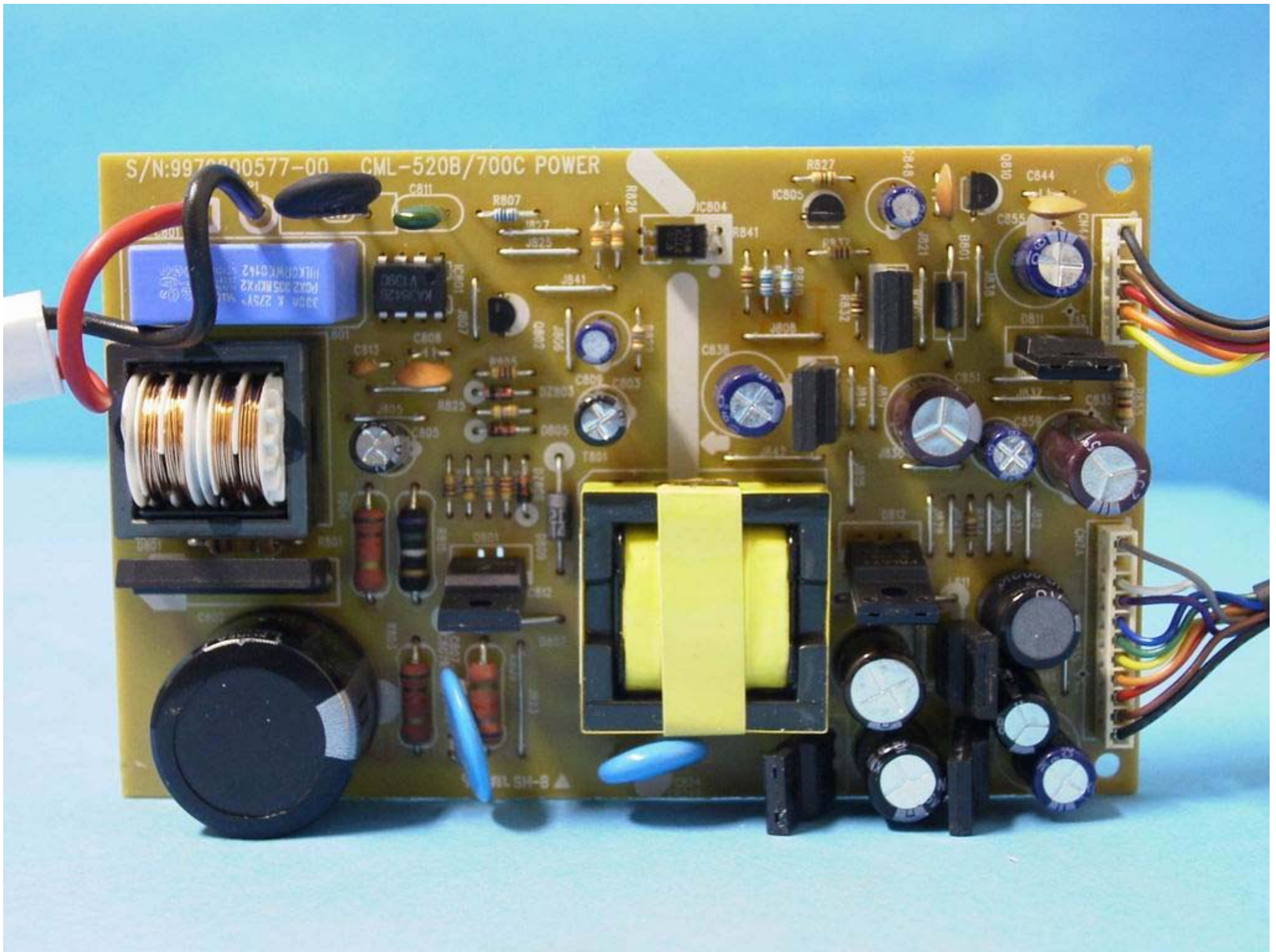


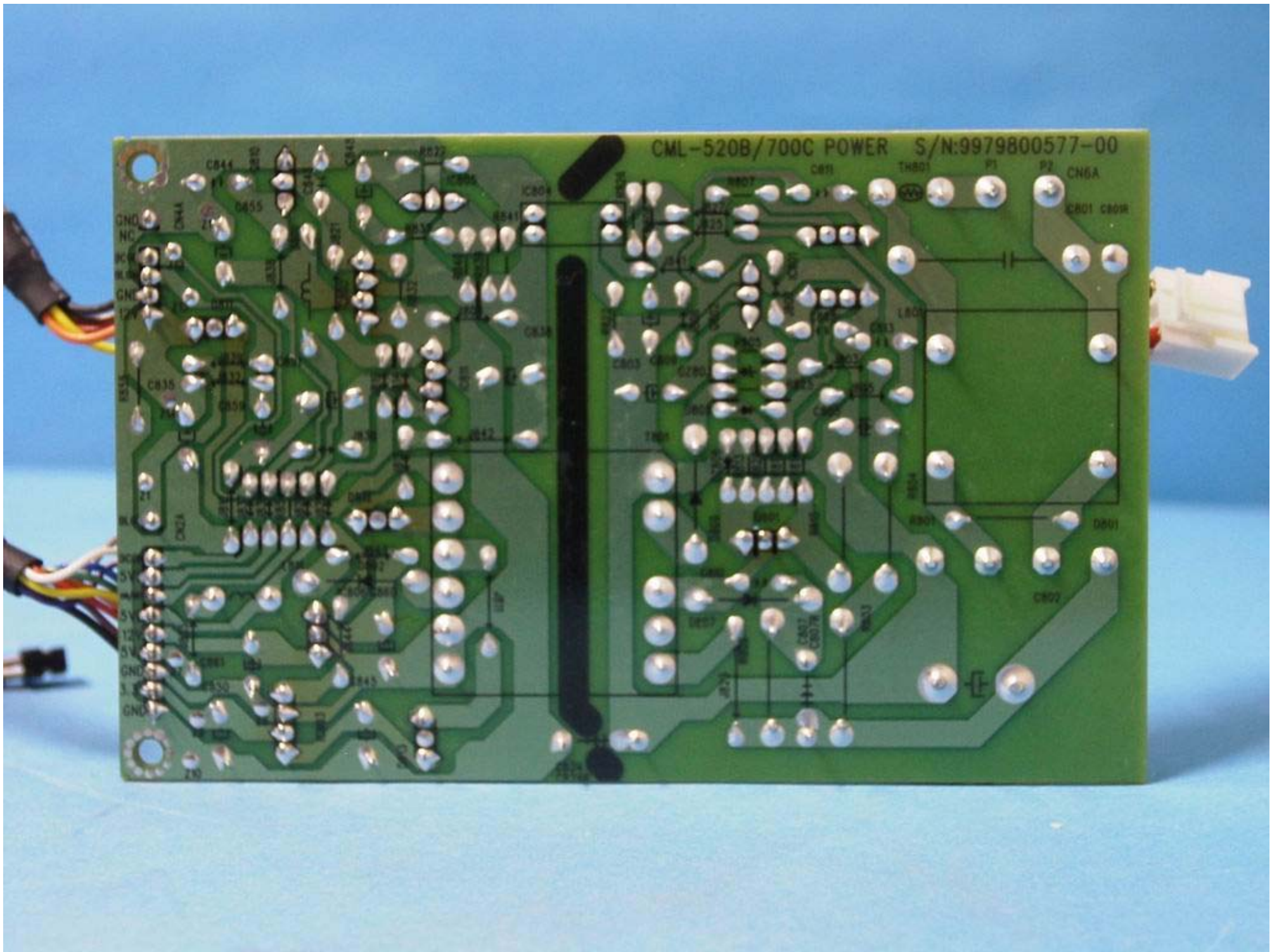
高压注意  
CAUTION  
HIGH VOLTAGE

高压注意  
CAUTION  
HIGH VOLTAGE

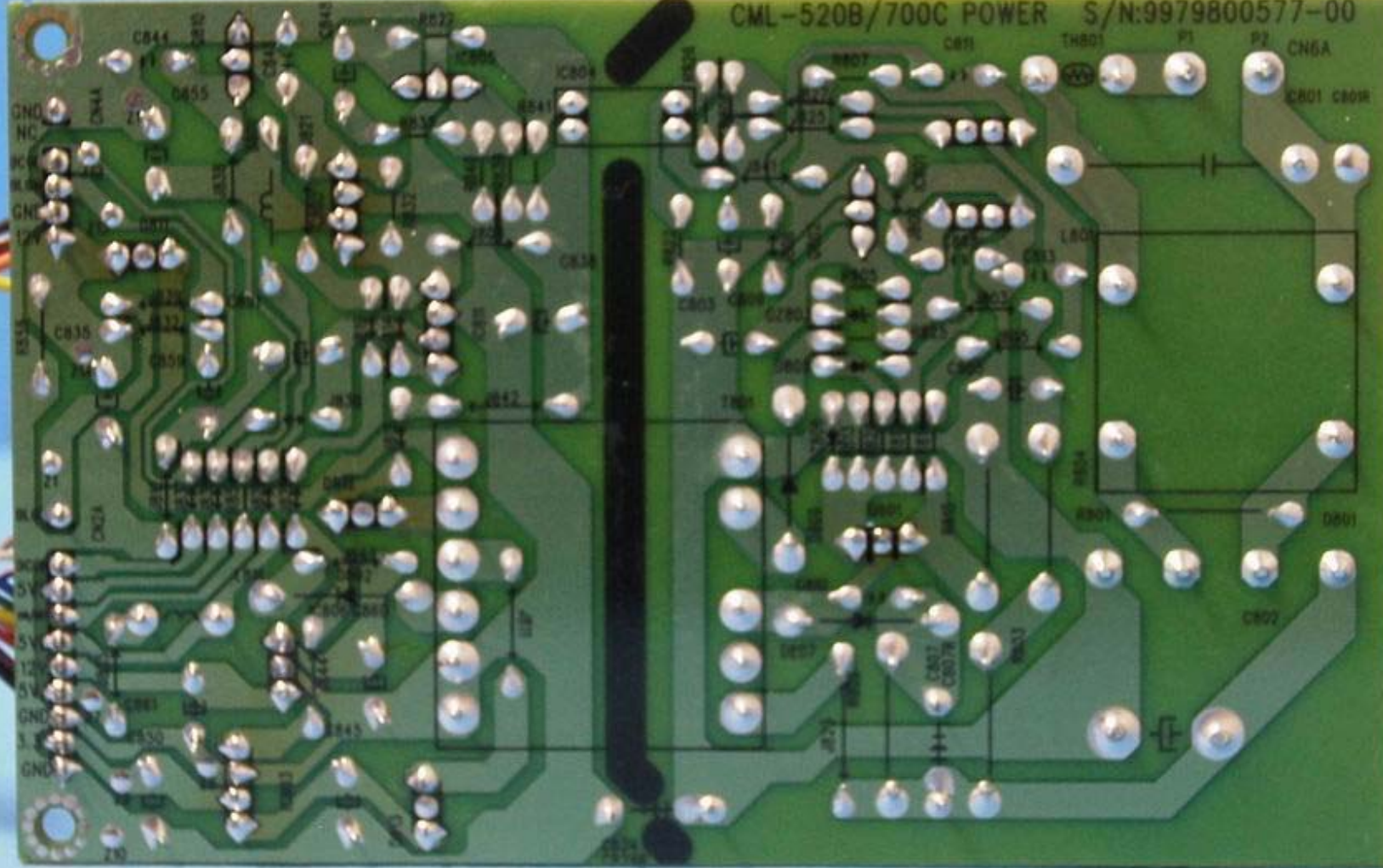
H.K.T. Co.

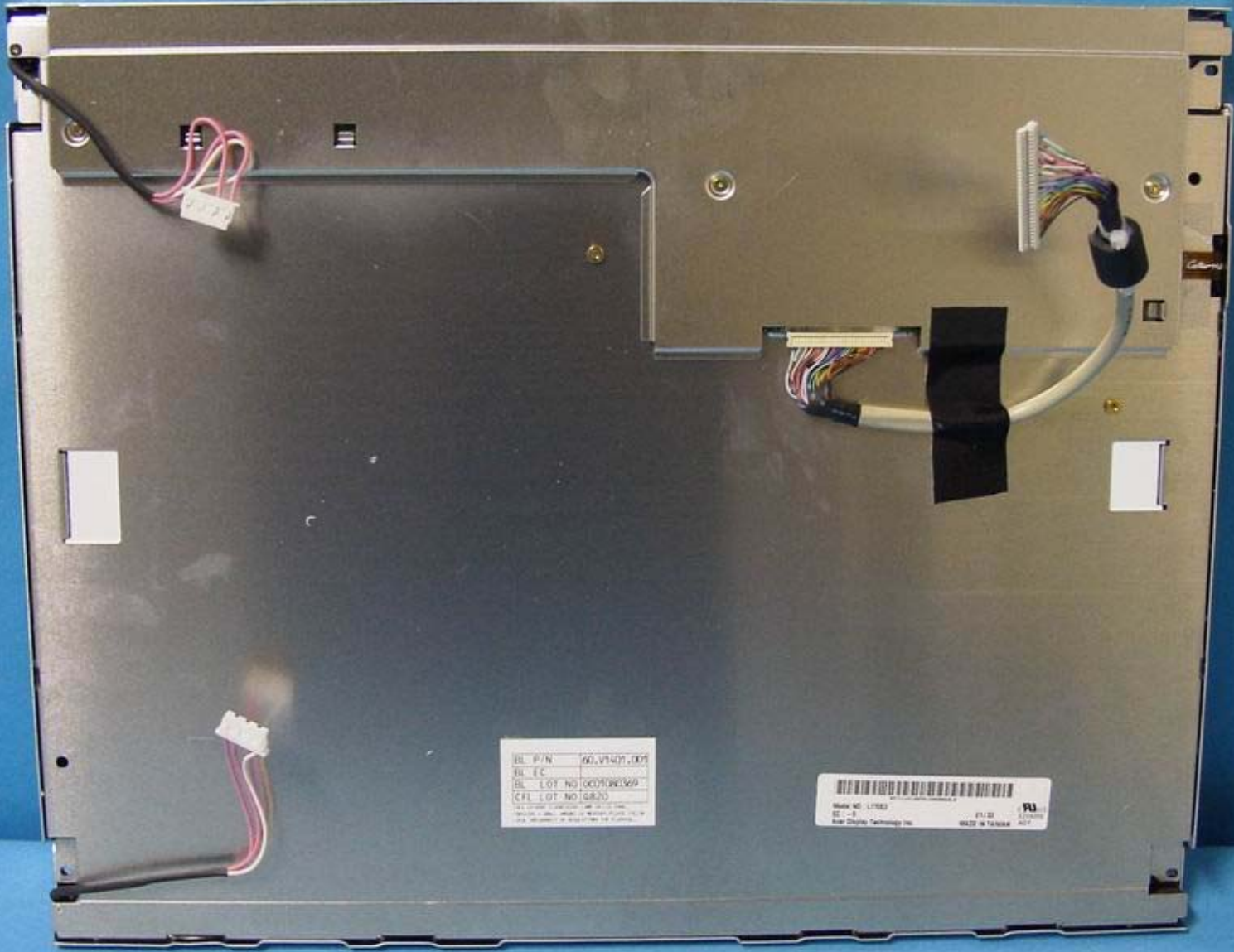






CML-520B/700C POWER S/N:9979800577-00





BL P/N 90, V9401, 001  
BL EC  
BL LOT NO 1000900369  
CHL LOT NO 10R25  
© 2008 Acer Computer, Inc. All rights reserved. Acer, the Acer logo, and the Acer logo with "Acer" text are trademarks of Acer Computer, Inc. in the U.S. and other countries. Acer Computer, Inc. is not responsible for errors or for any consequences arising from the use of the information contained in this document.

Model No. L1903  
EC - 8  
Acer Display Technology Inc.  
F1121  
MADE IN TAIWAN  
Acer logo

