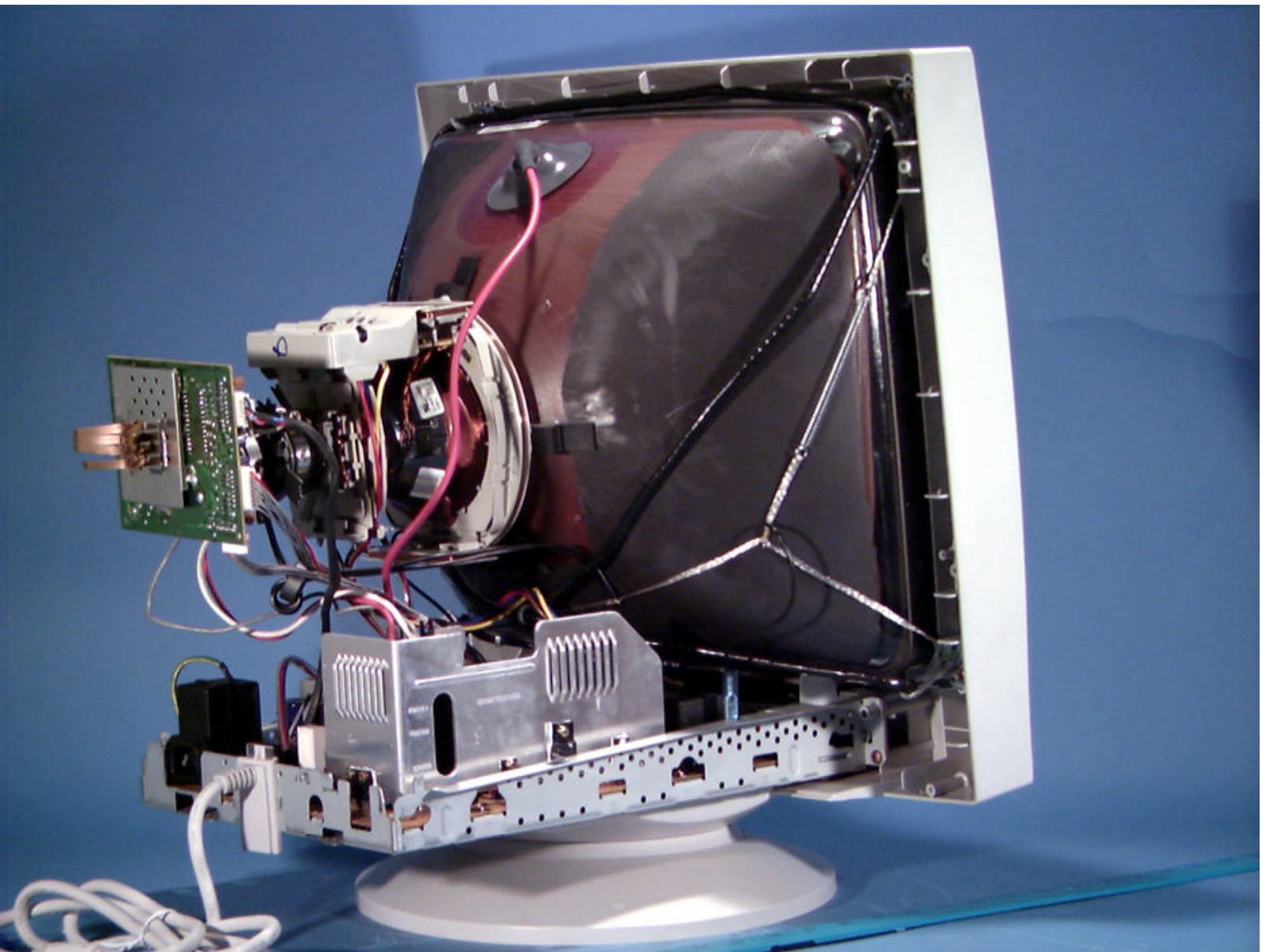


© 2000 PCTEST Lab

DAEWOO FCC ID: C5F7NFCMC905D  
19-Inch Color Monitor (Model: 905D)

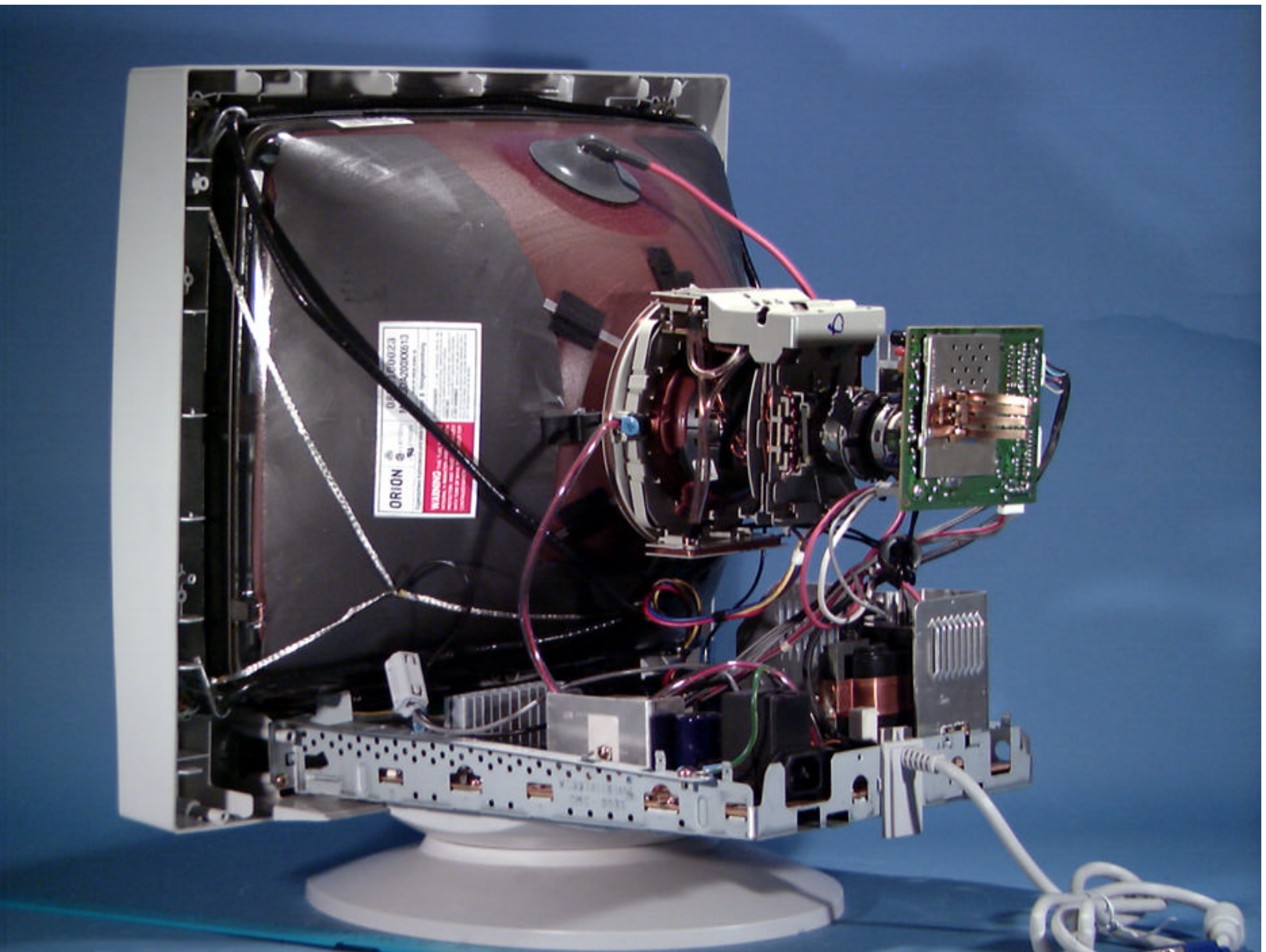
NVLAP Lab Code: 1004310



© 2000 PCTEST Lab

DAEWOO FCC ID: C5F7NFCMC905D  
19-Inch Color Monitor (Model: 905D)

NVLAP Lab Code: 1004310



© 2000 PCTEST Lab

DAEWOO FCC ID: C5F7NFCMC905D  
19-Inch Color Monitor (Model: 905D)

NVLAP Lab Code: 1004310

**ORION**



**SP**® LR77203

**RU**® E55289

**0850100023**  
**M46QDA200XX613**

MADE BY ORION, KOREA ③

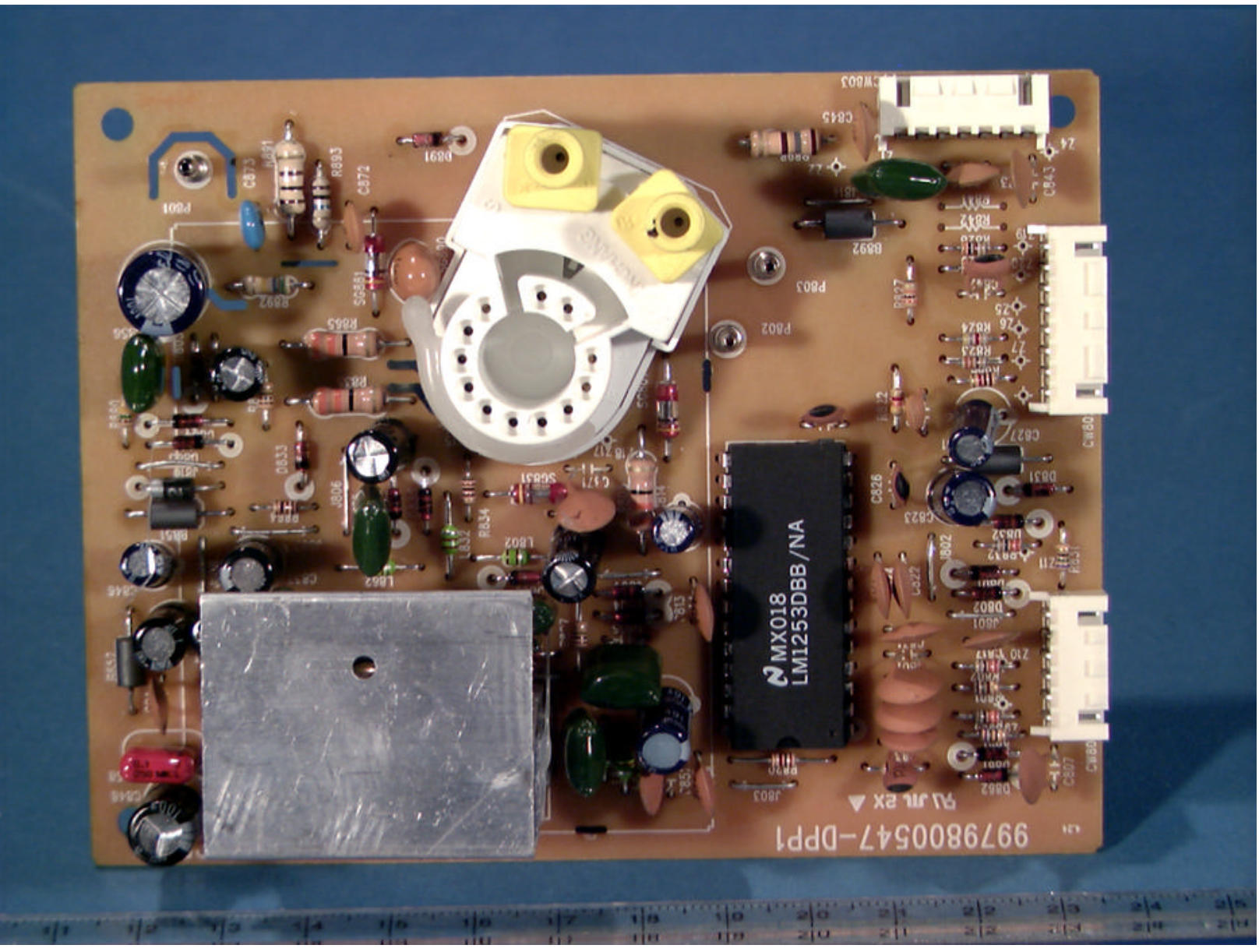
Eigensichere Kathodenstrahlröhre nach Anlage III Röntgenverordnung.

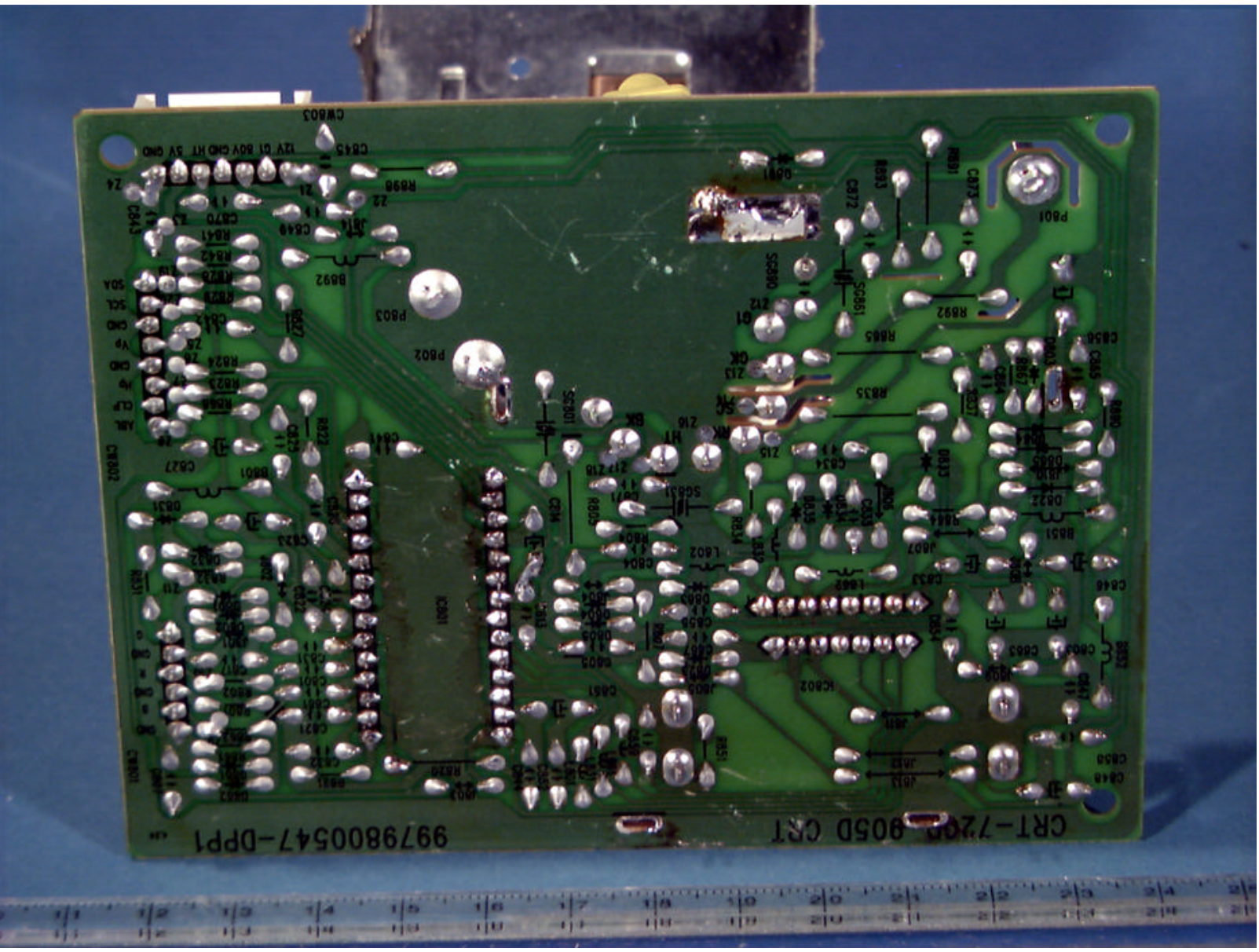
**WARNING** THIS TUBE EMPLOYS  
INTEGRAL X-RADIATION AND IMPLOSION  
PROTECTION AND MUST BE REPLACED  
WITH TUBE OF SAME TYPE NUMBER FOR  
CONTINUED SAFETY.

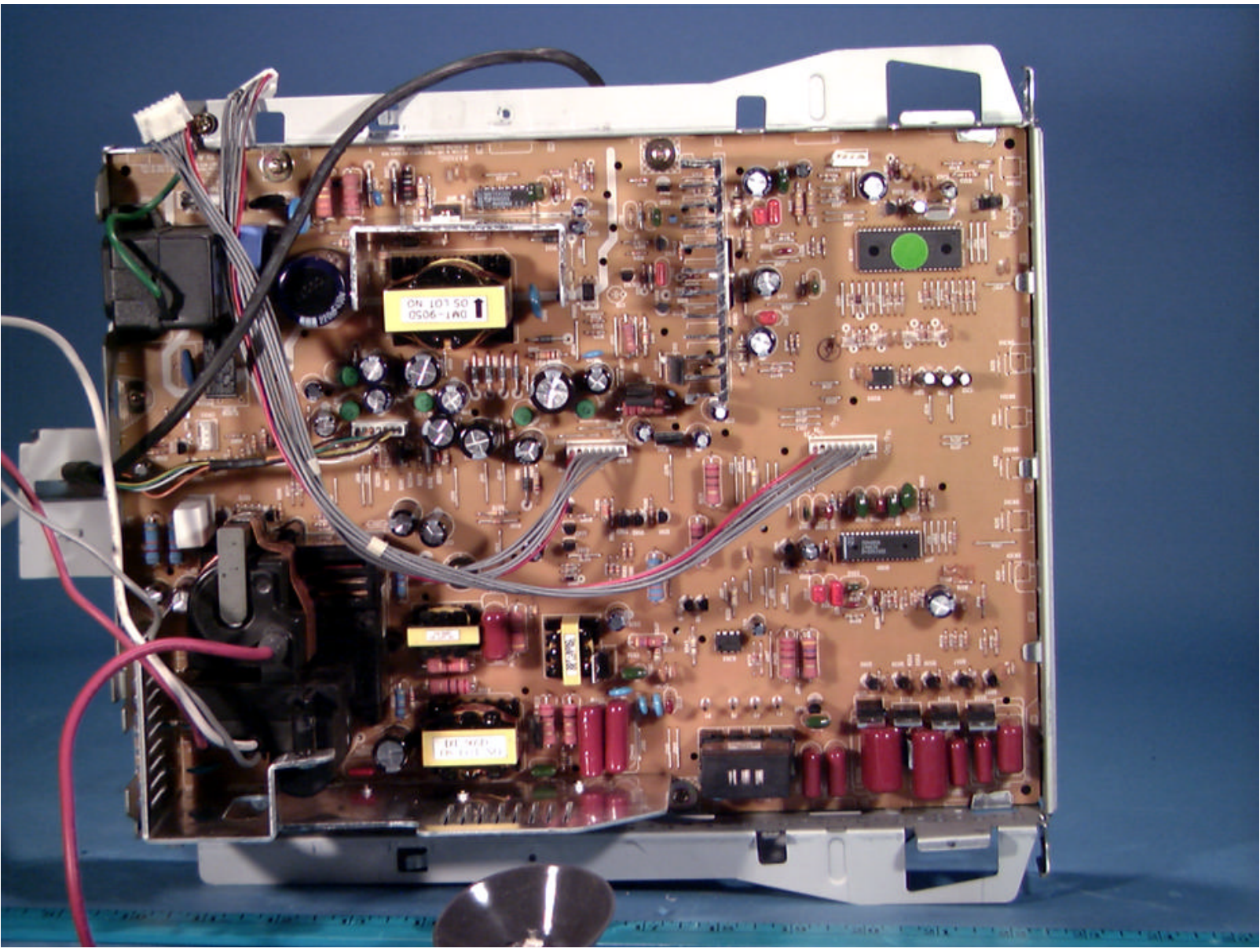
**AVERTISSEMENT** : CE TUBE CATHODIQUE EMPLOIE UNE  
PROTECTION D'IMPLOSION INTÉGRALE, REMPLACER PAR UN TUBE  
DUMÊME TYPE NUMÉRO POUR LA SÛRETÉ CONTINUE.

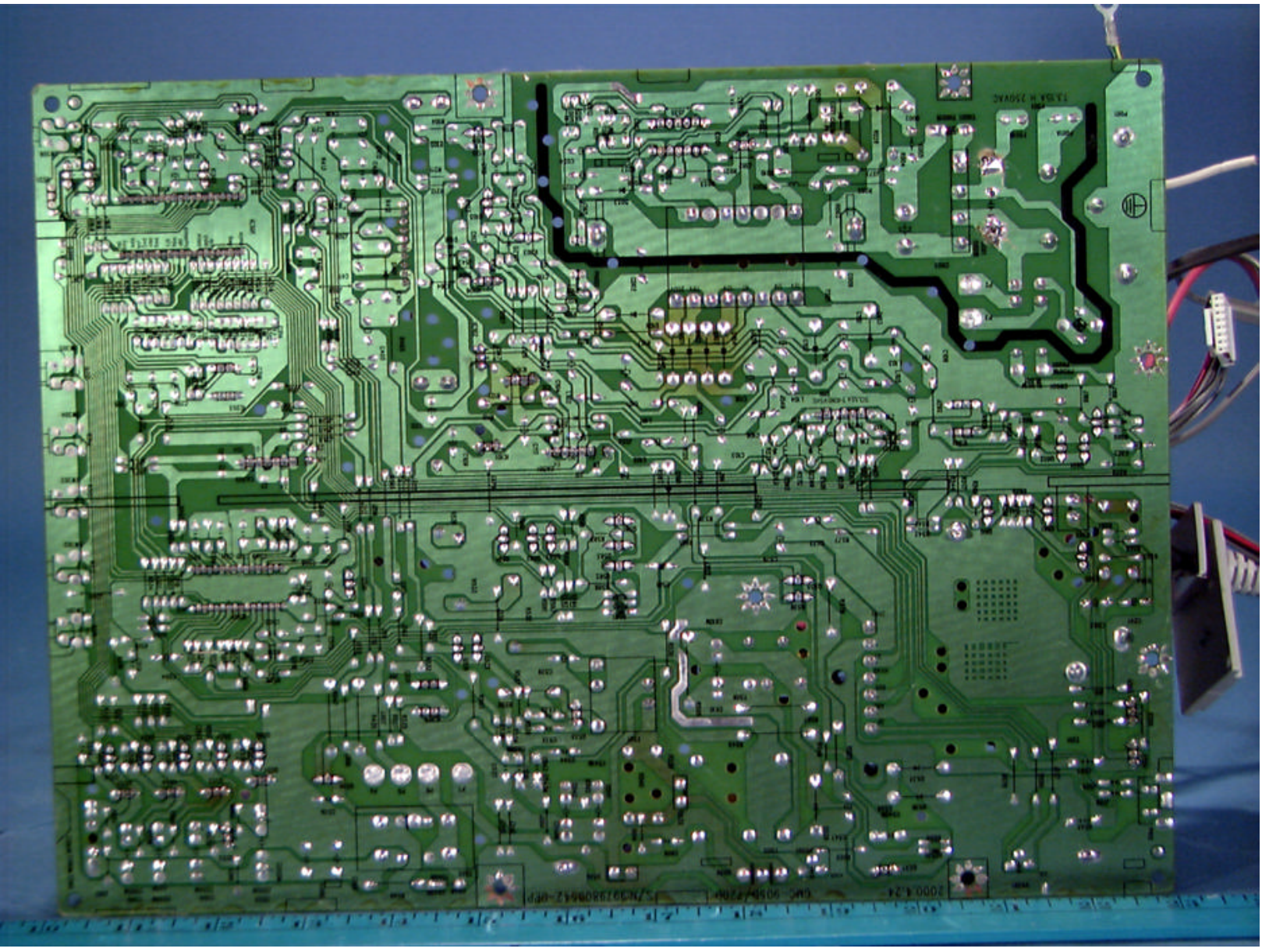
**HANDLING** : HIGH-VACUUM PICTURE TUBE IS DANGEROUS TO  
HANDLE, REFER SERVICING TO QUALIFIED SERVICE PERSONNEL.

**X-RAY WARNING** : WHEN PICTURE TUBES ARE OPERATED AT  
VERY HIGH VOLTAGE AND WHEN PERSONAL EXPOSURE IS PROLO-  
NGED AT CLOSE RANGE, SPECIAL SHIELDING PRECAUTIONS AGAI-  
NST X-RAY RADIATION MAY BE NEEDED.

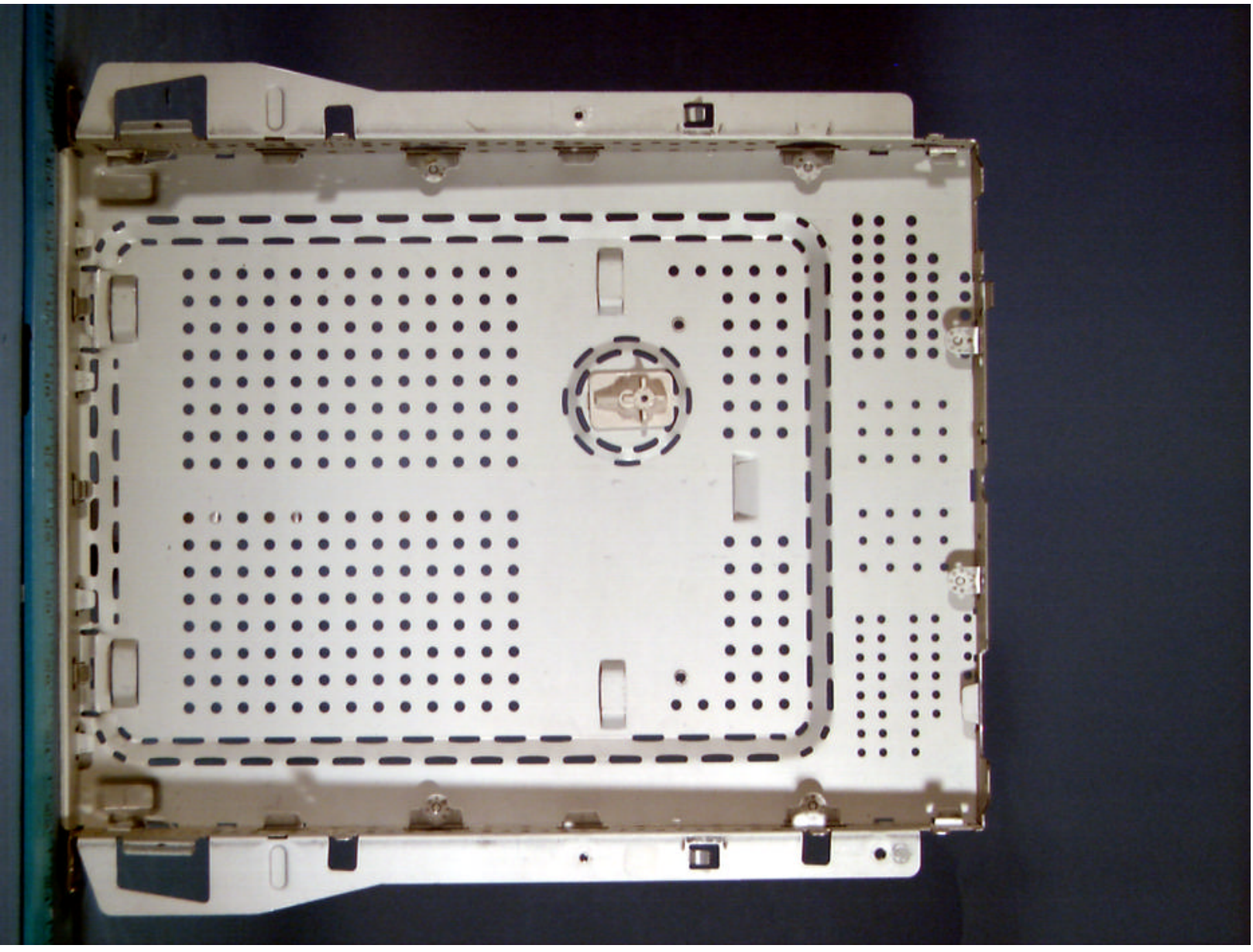








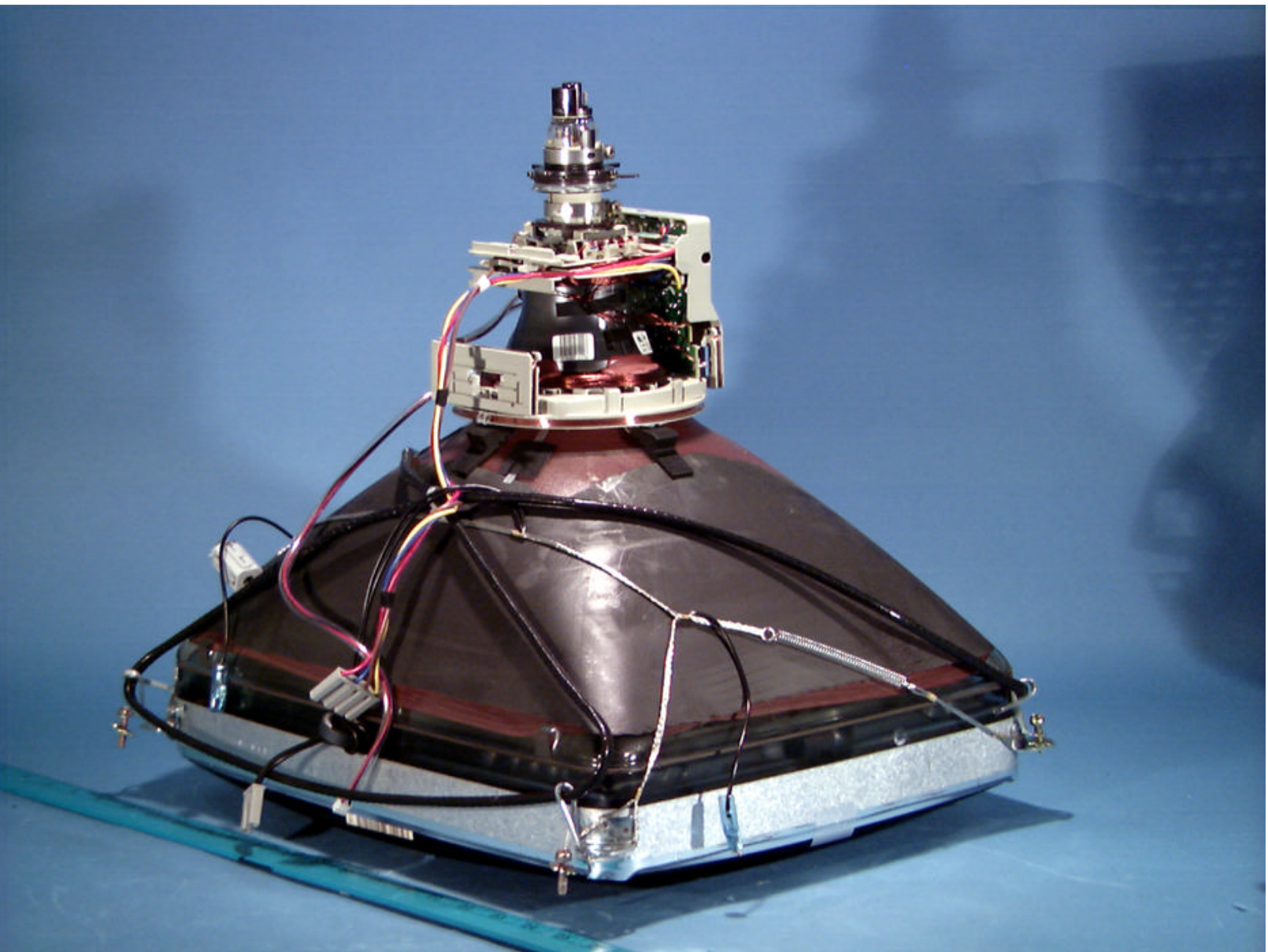




© 2000 PCTEST Lab

DAEWOO FCC ID: C5F7NFCMC905D  
19-Inch Color Monitor (Model: 905D)

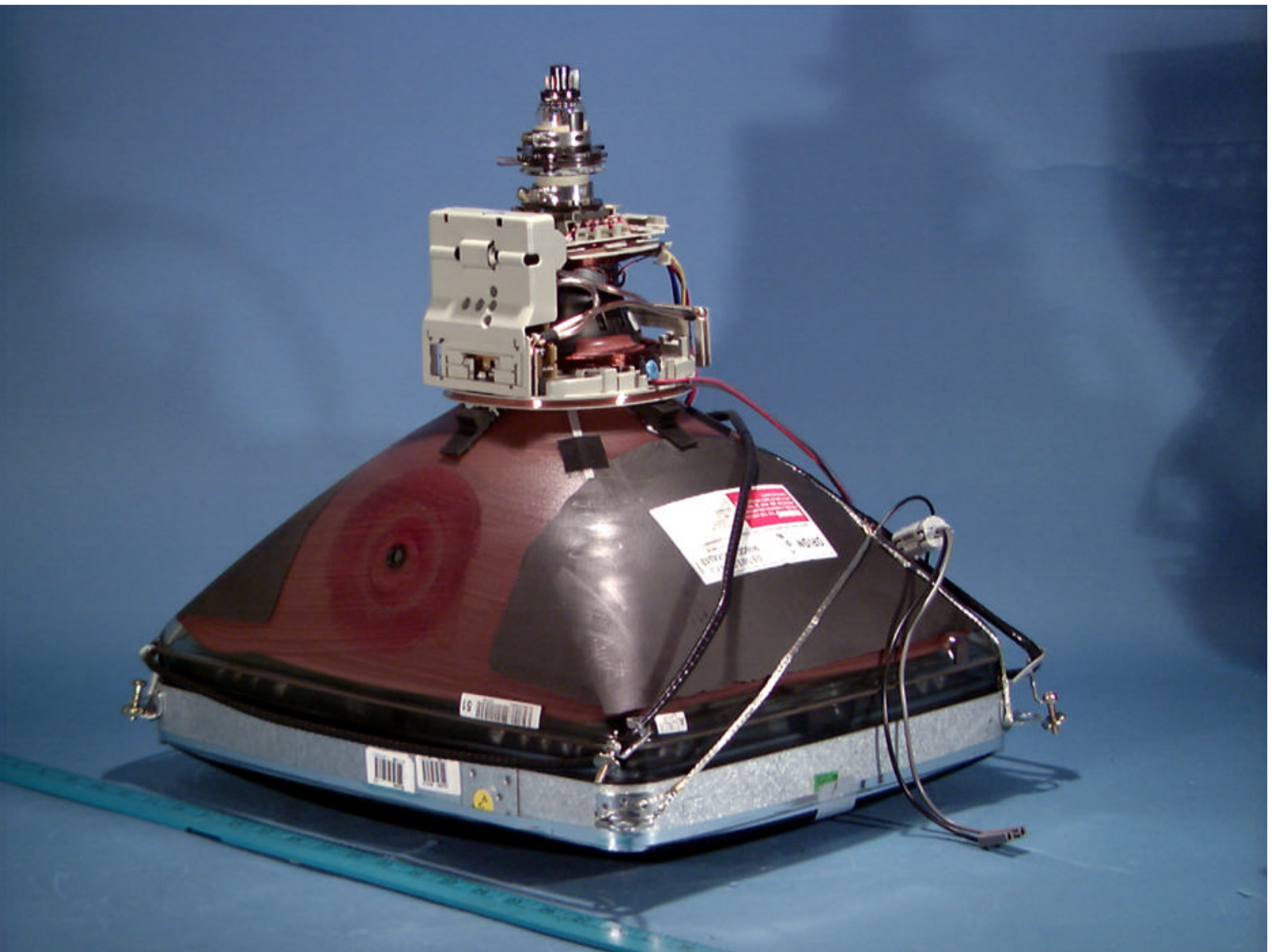
NVLAP Lab Code: 1004310



© 2000 PCTEST Lab

DAEWOO FCC ID: C5F7NFCMC905D  
19-Inch Color Monitor (Model: 905D)

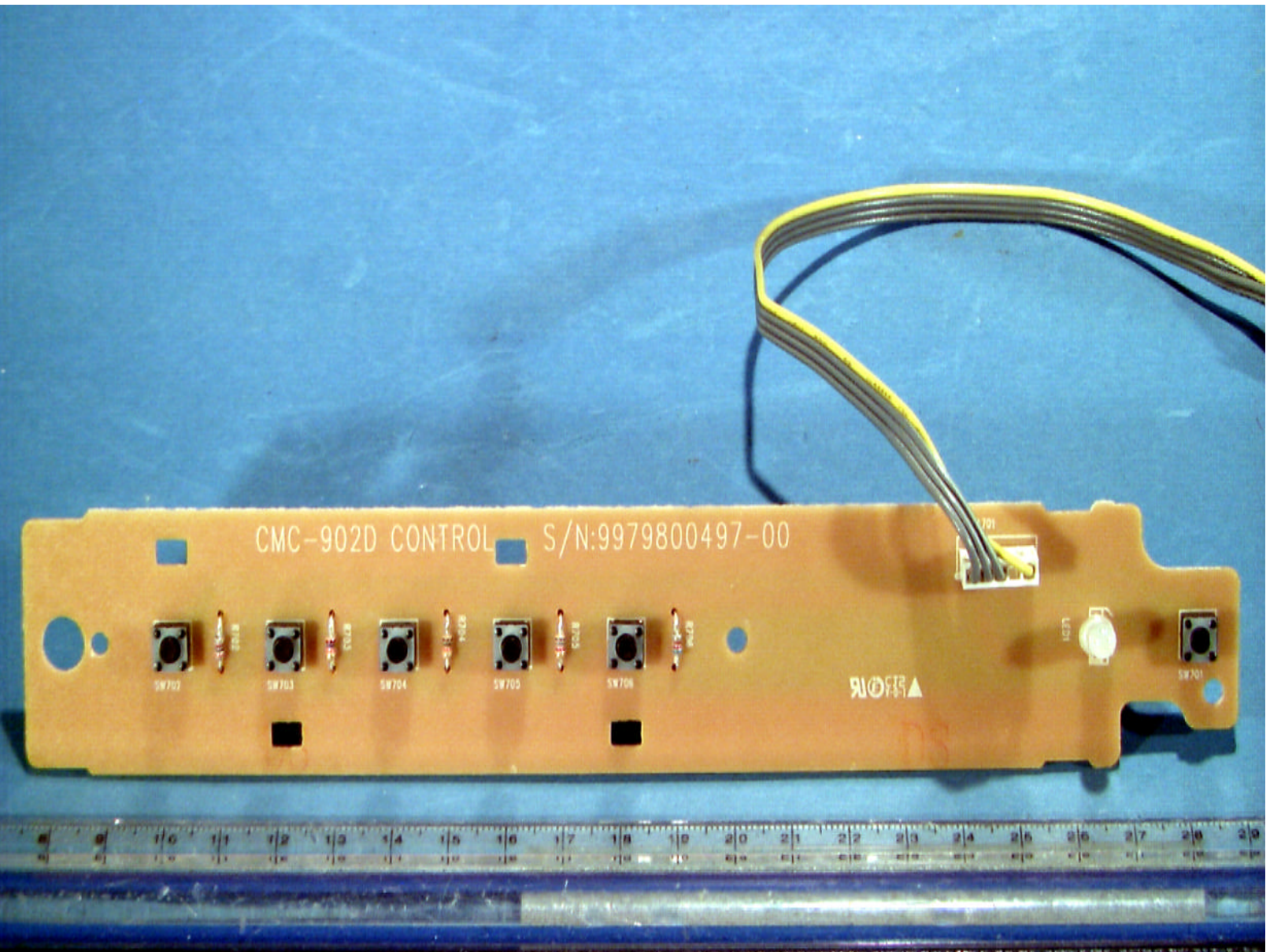
NVLAP Lab Code: 1004310

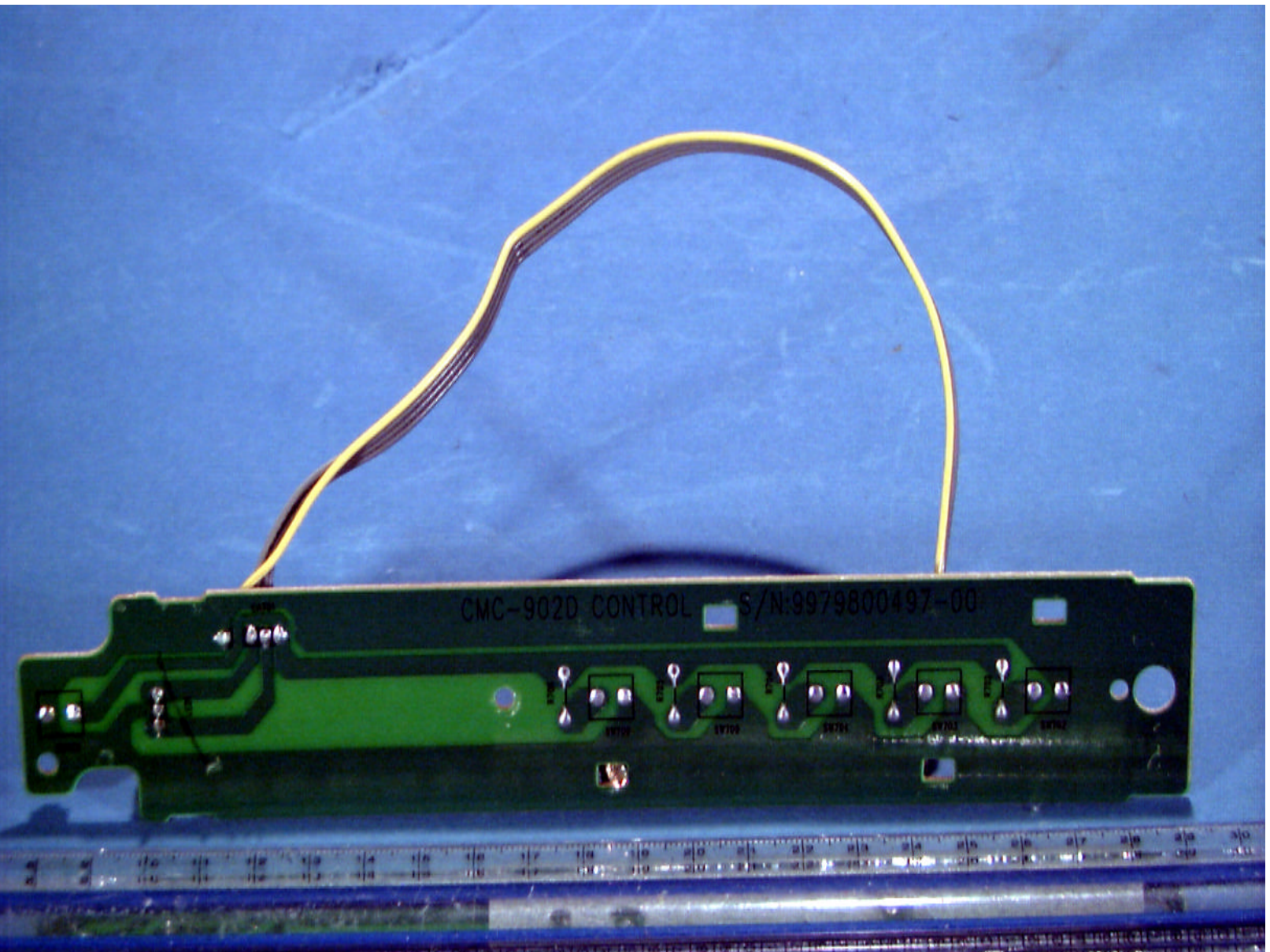


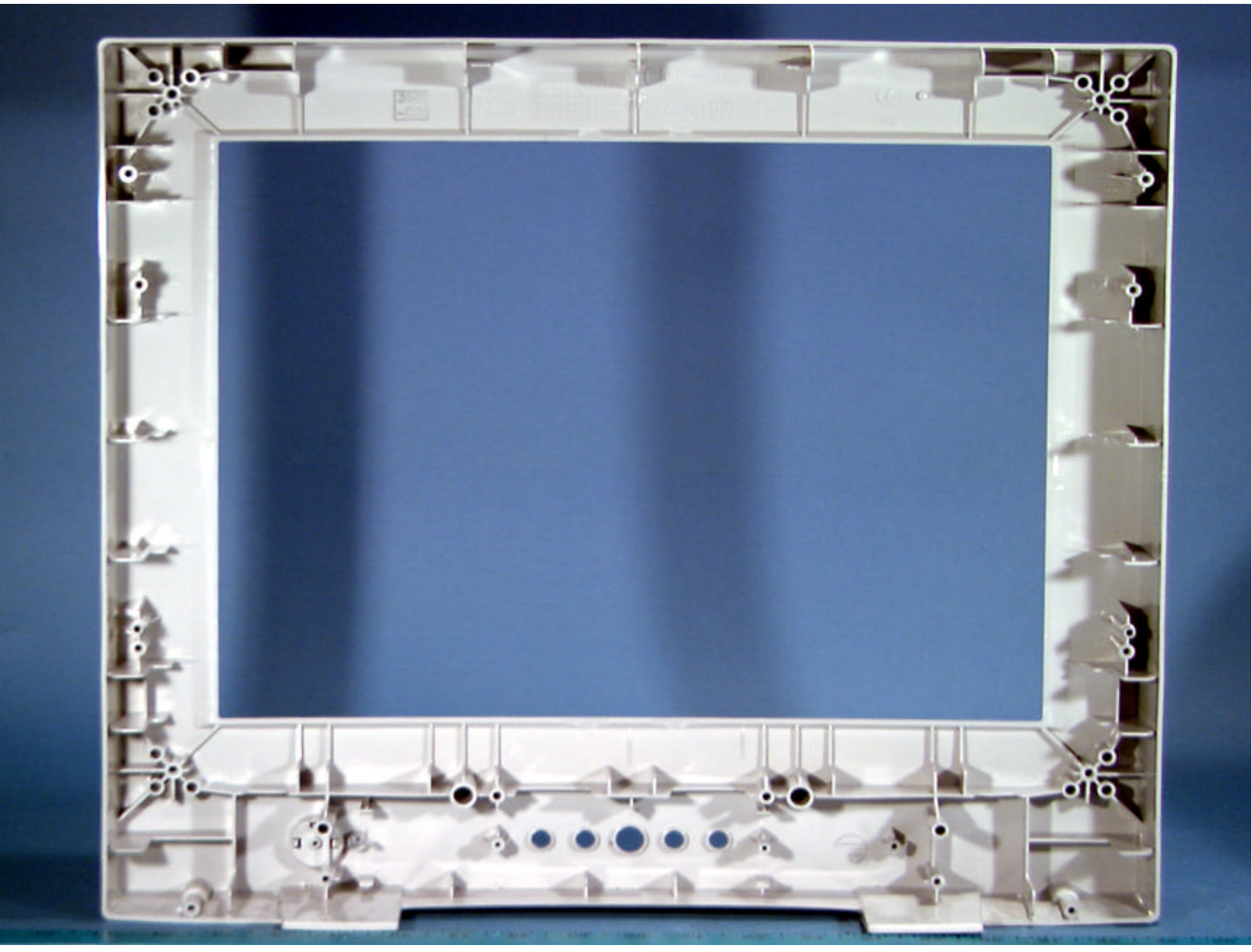
© 2000 PCTEST Lab

DAEWOO FCC ID: C5F7NFCMC905D  
19-Inch Color Monitor (Model: 905D)

NVLAP Lab Code: 1004310



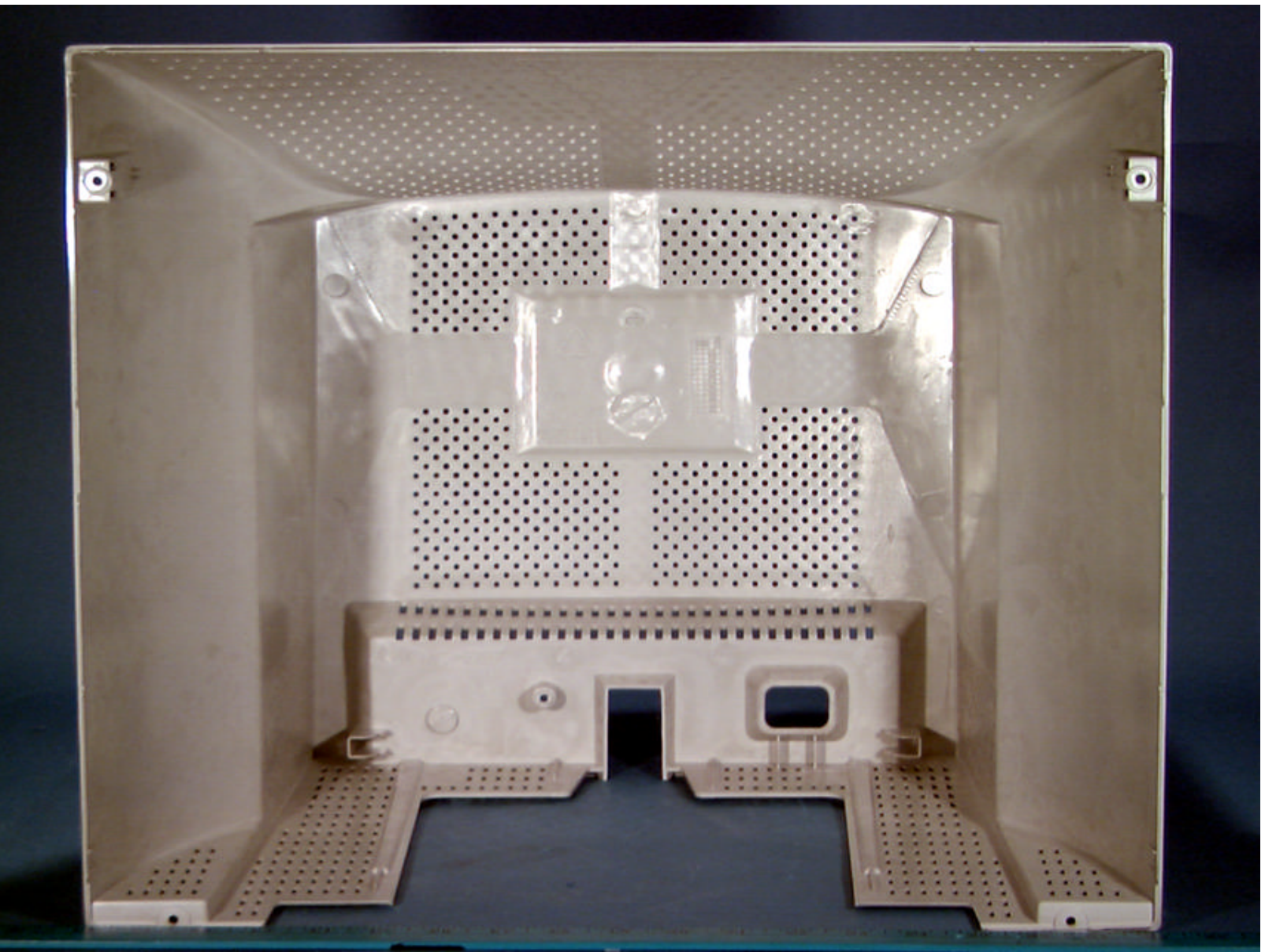




© 2000 PCTEST Lab

DAEWOO FCC ID: C5F7NFCMC905D  
19-Inch Color Monitor (Model: 905D)

NVLAP Lab Code: 1004310



© 2000 PCTEST Lab

DAEWOO FCC ID: C5F7NFCMC905D  
19-Inch Color Monitor (Model: 905D)

NVLAP Lab Code: 1004310