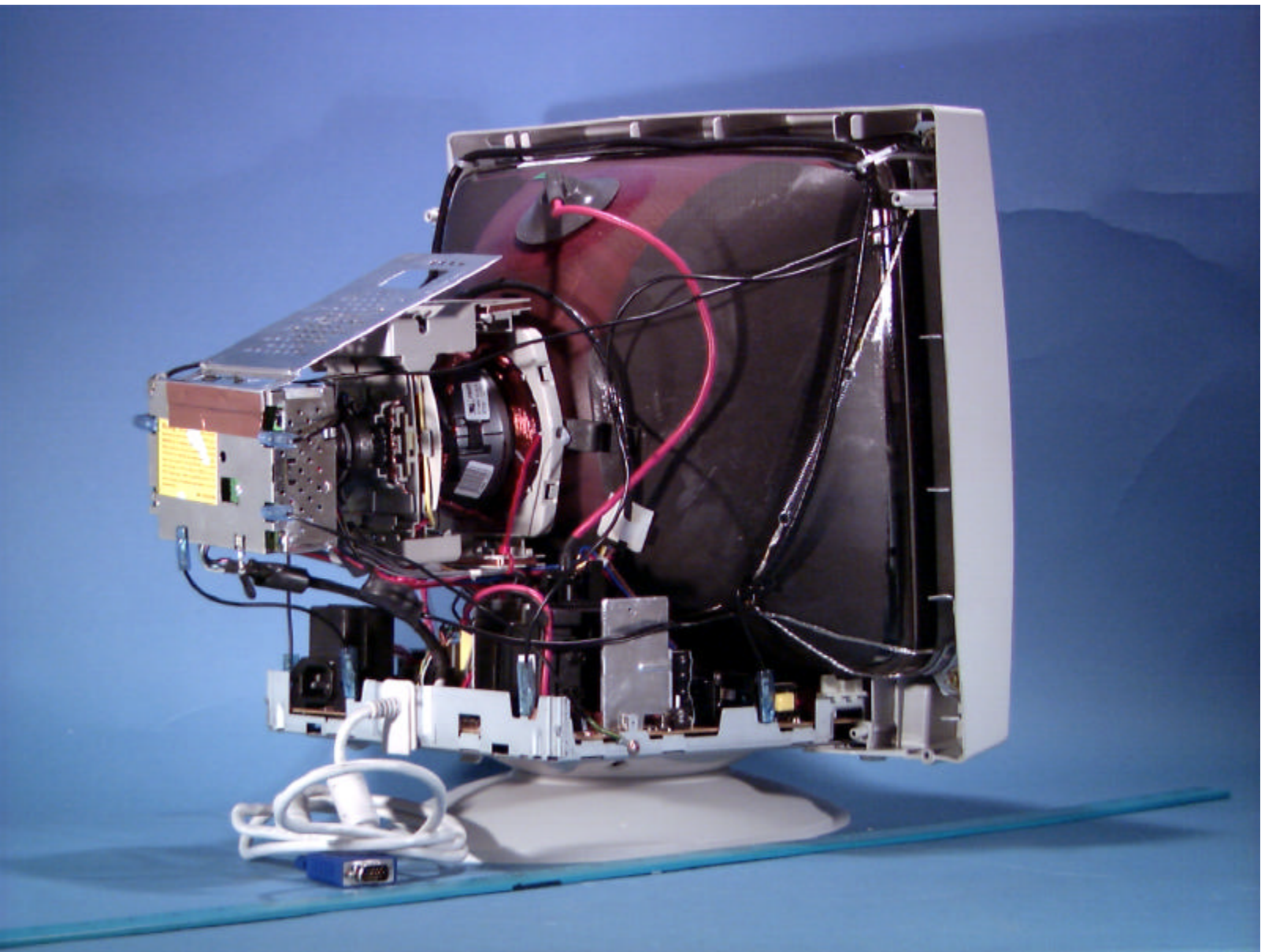


© 2000 PCTEST Lab

DAEWOO FCC ID: C5F7NFCMC719B
17-inch Color Monitor (Model: 719B)

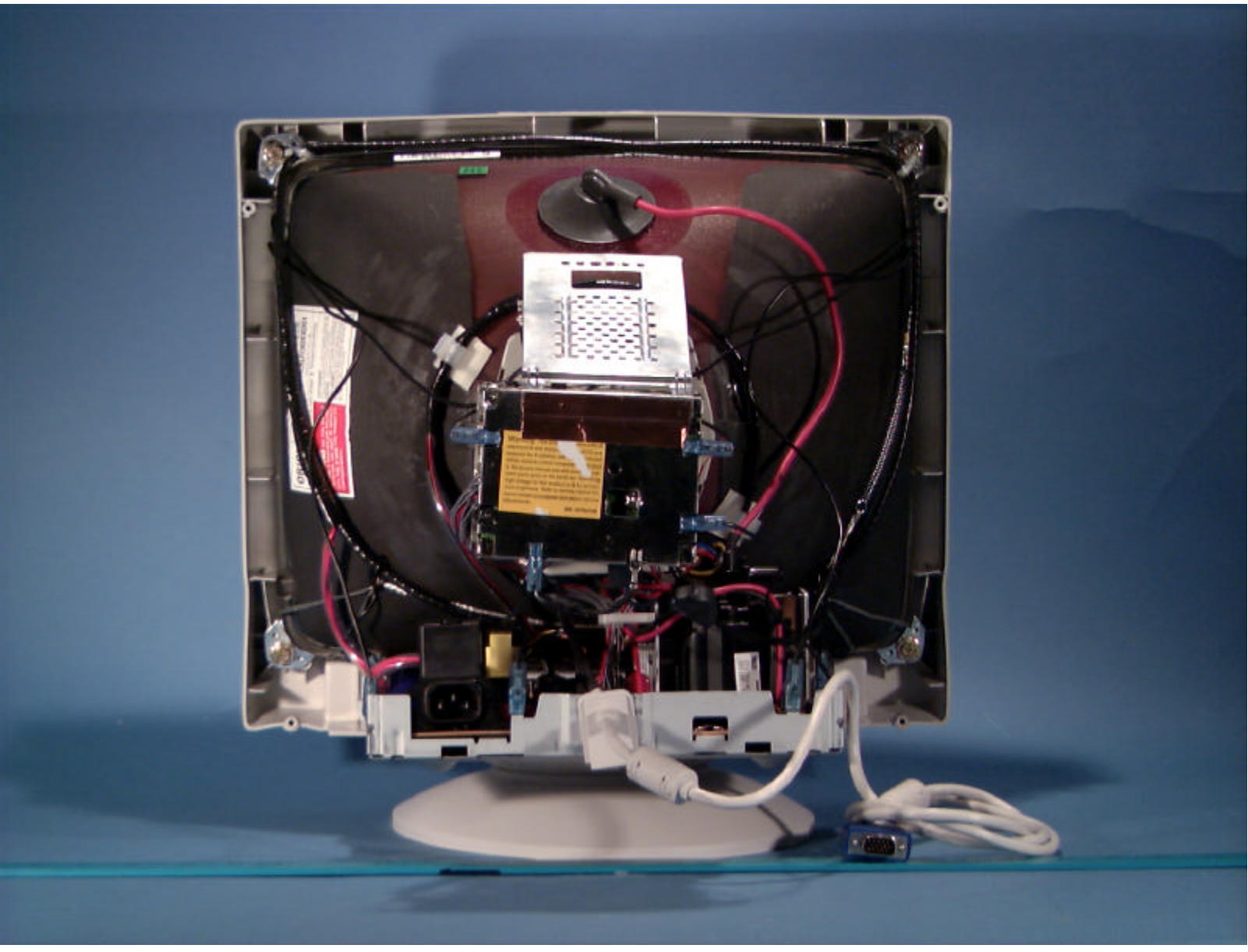
NVLAP Lab Code: 1004310



© 2000 PCTEST Lab

DAEWOO FCC ID: C5F7NFCMC719B
17-Inch Color Monitor (Model: 719B)

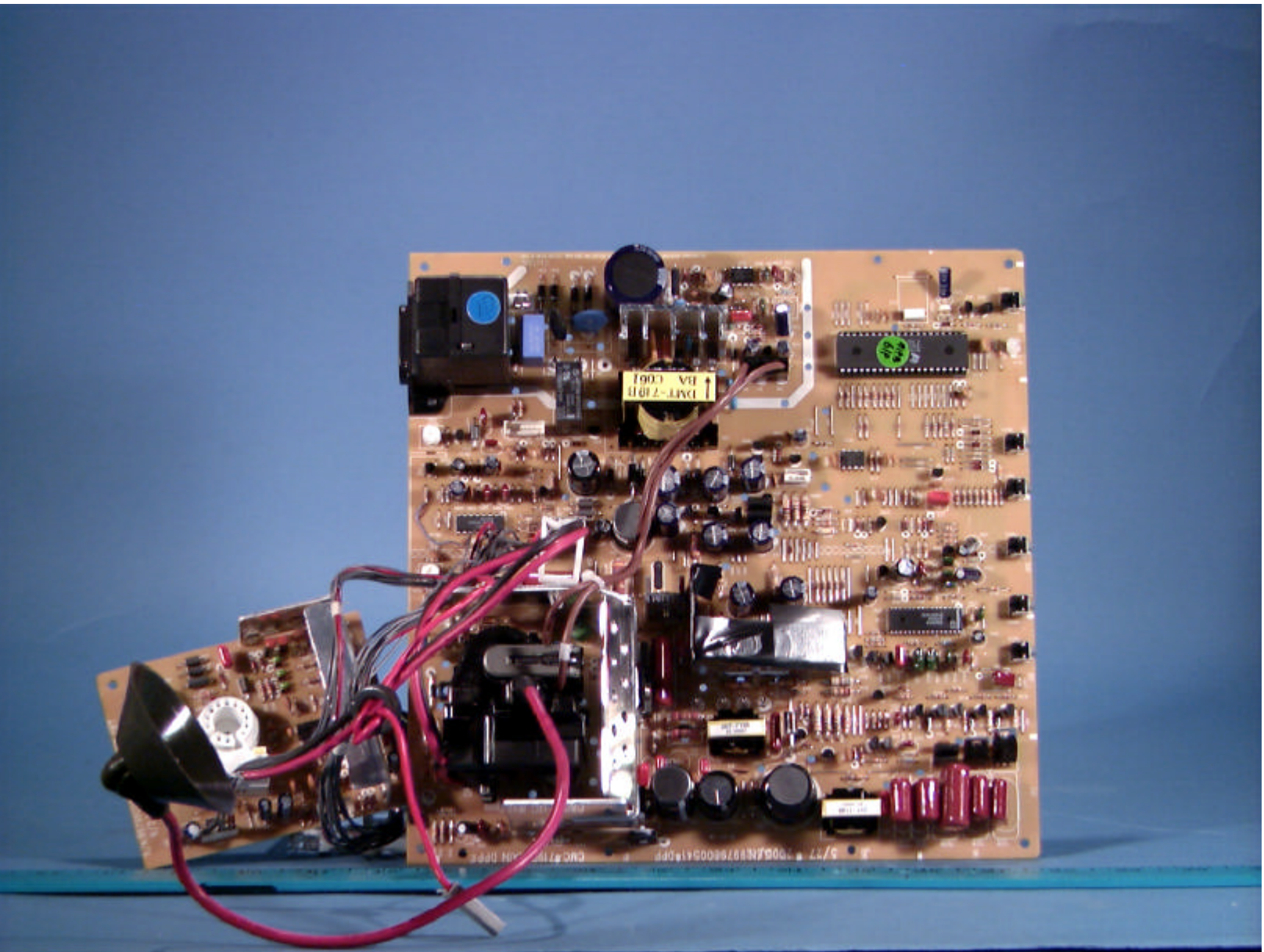
NVLAP Lab Code: 1004310

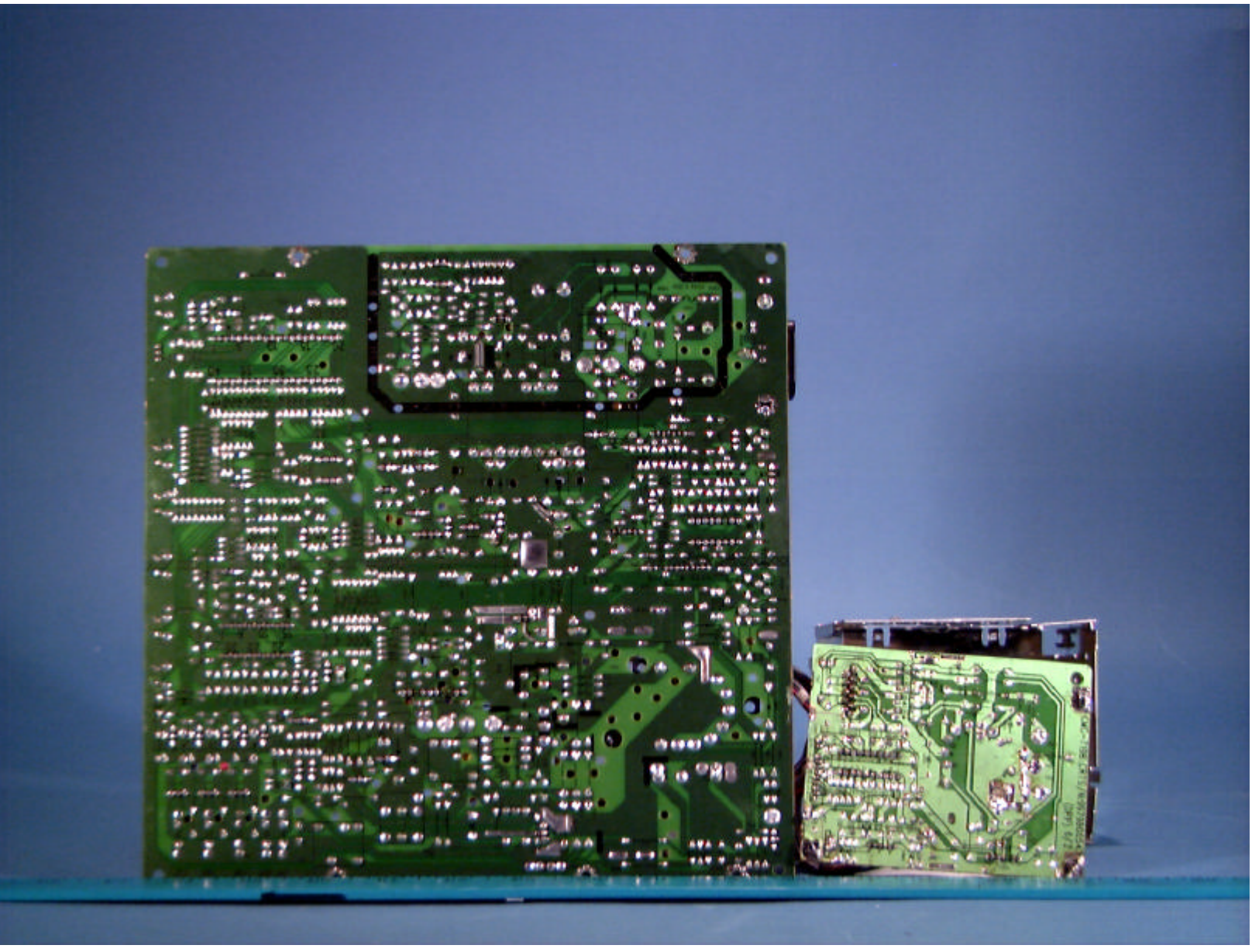


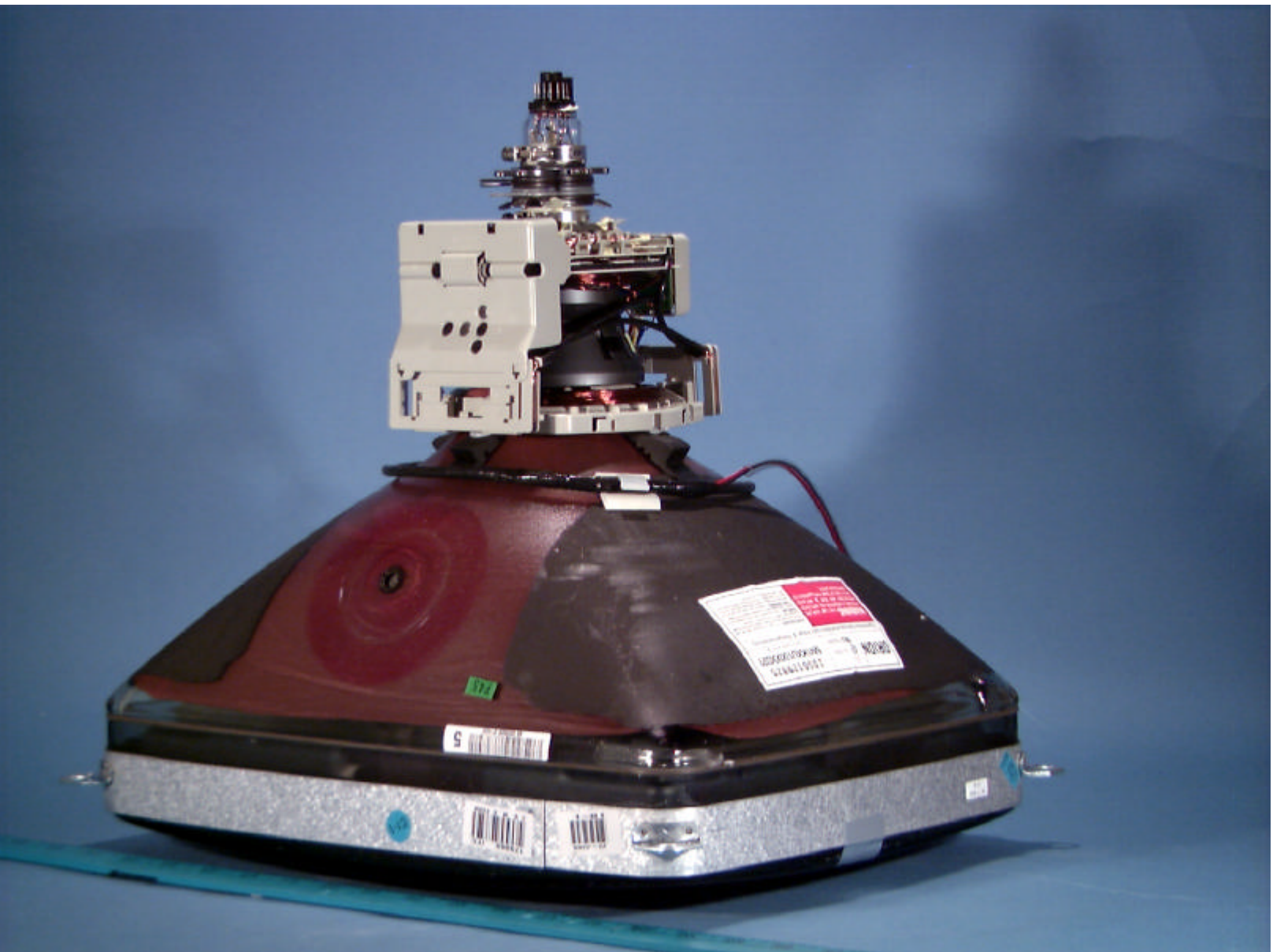
© 2000 PCTEST Lab

DAEWOO FCC ID: C5F7NFCMC719B
17-Inch Color Monitor (Model: 719B)

NVLAP Lab Code: 1004310



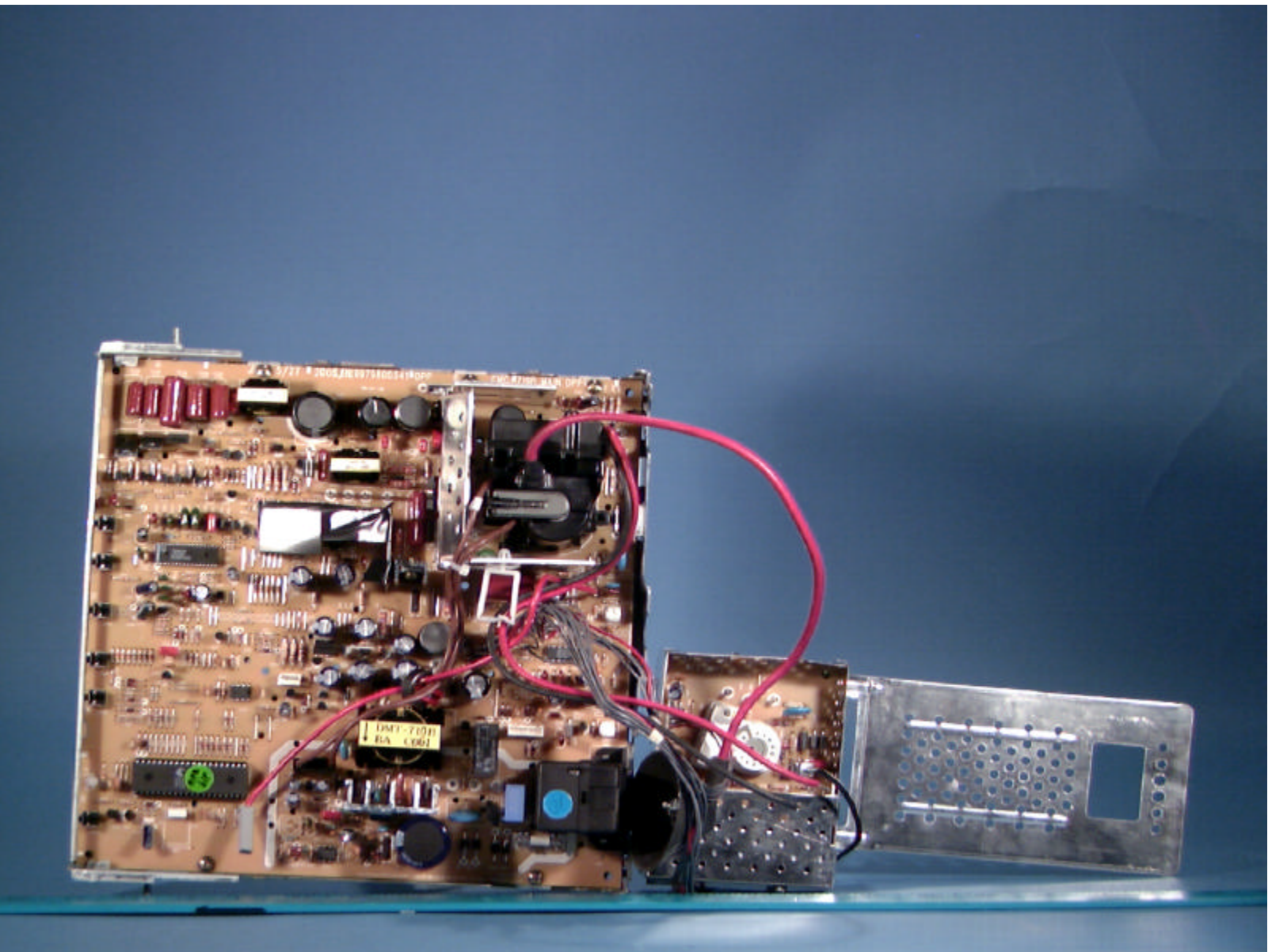


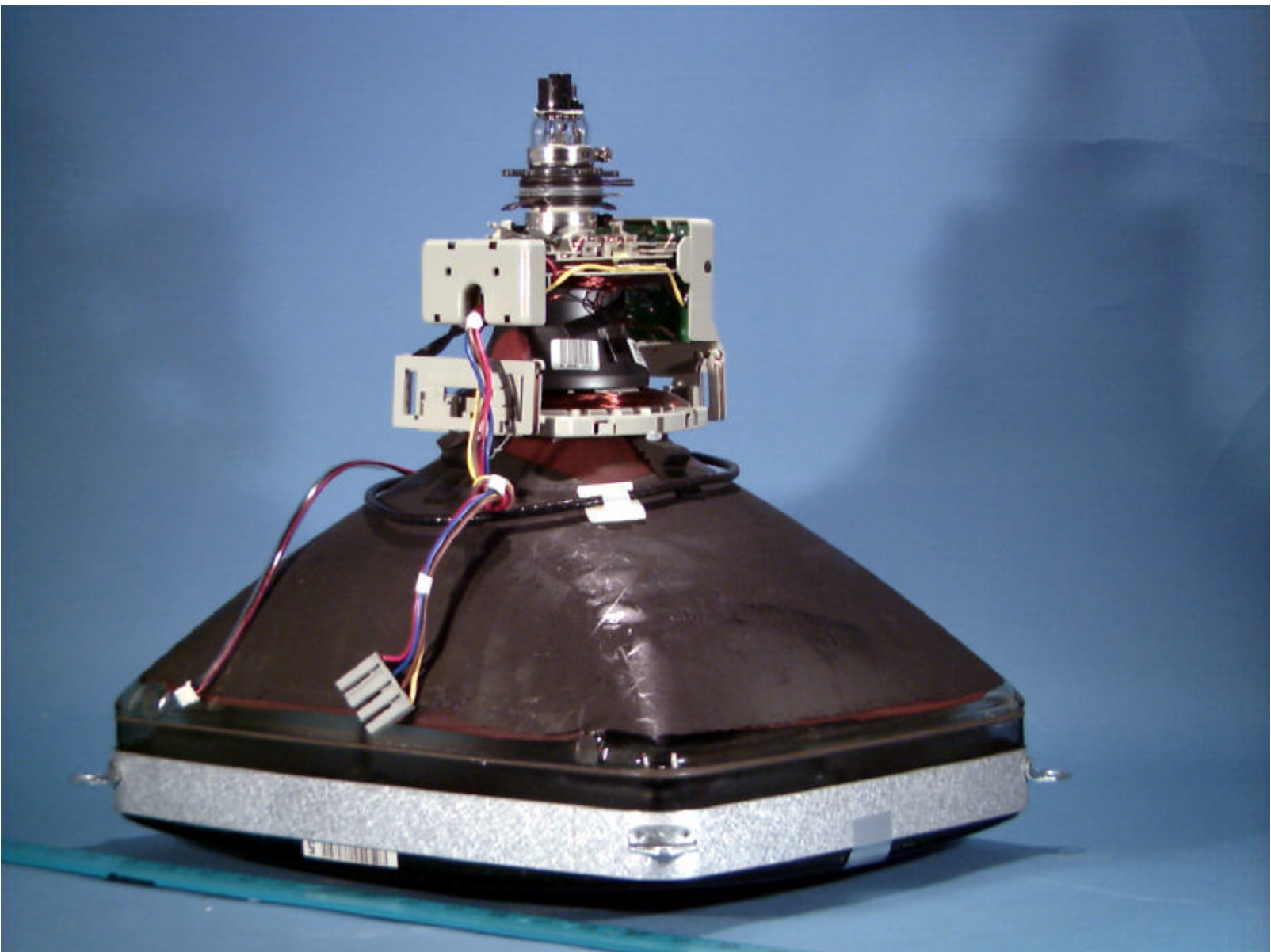


© 2000 PCTEST Lab

DAEWOO FCC ID: C5F7NFCMC719B
17-Inch Color Monitor (Model: 719B)

NVLAP Lab Code: 1004310

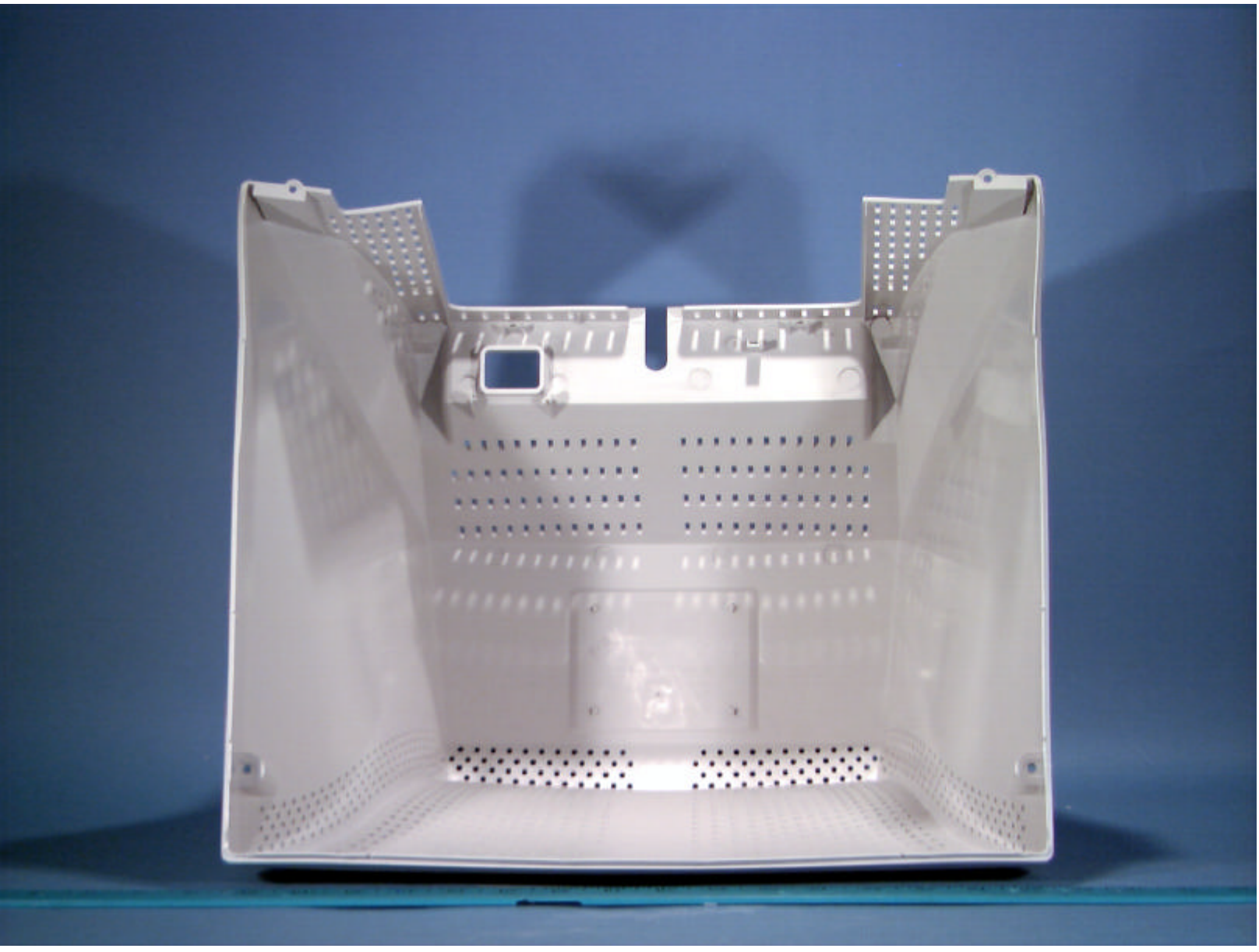




© 2000 PCTEST Lab

DAEWOO FCC ID: C5F7NFCMC719B
17-Inch Color Monitor (Model: 719B)

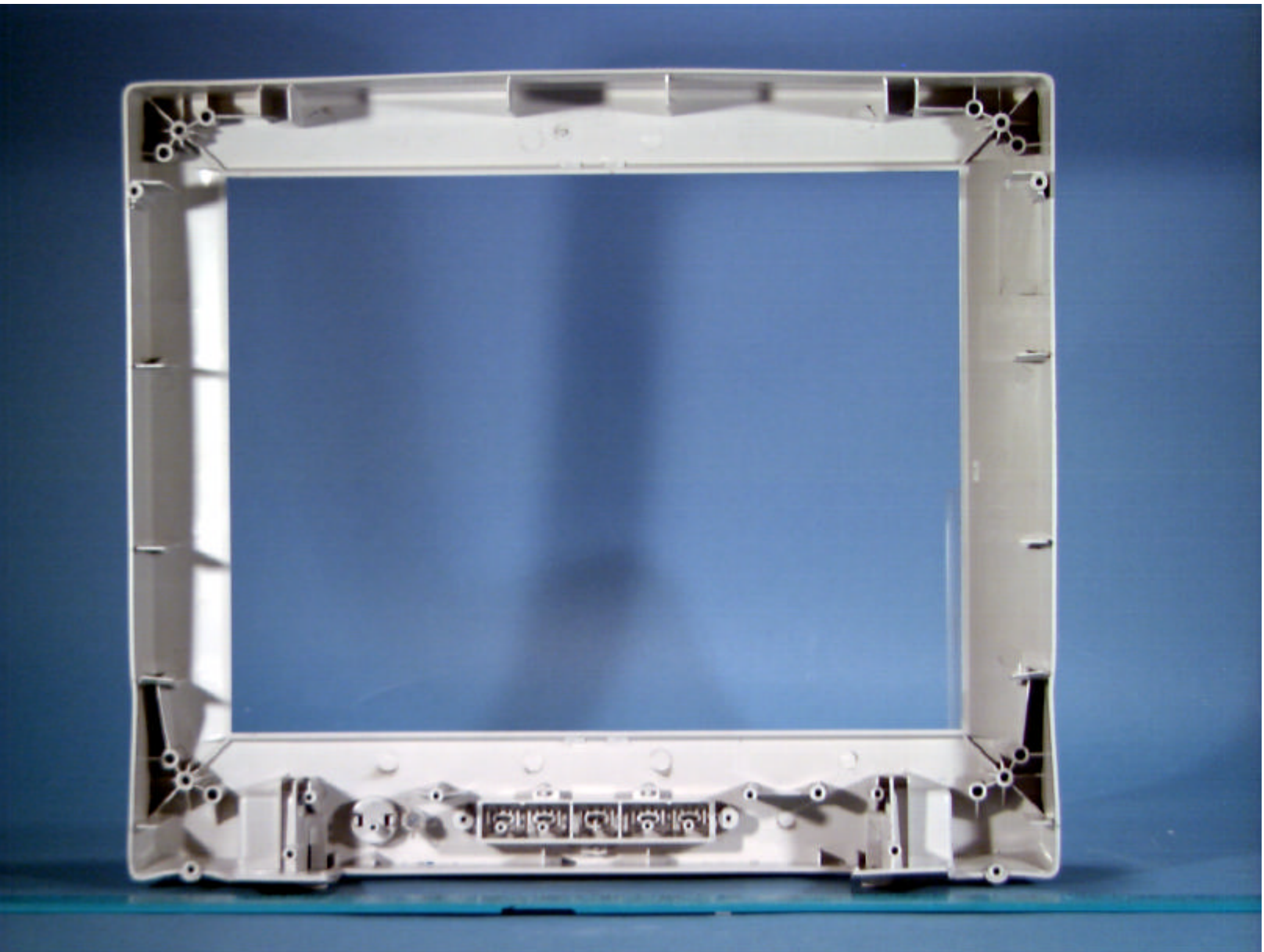
NVLAP Lab Code: 1004310



© 2000 PCTEST Lab

DAEWOO FCC ID: C5F7NFCMC719B
17-Inch Color Monitor (Model: 719B)

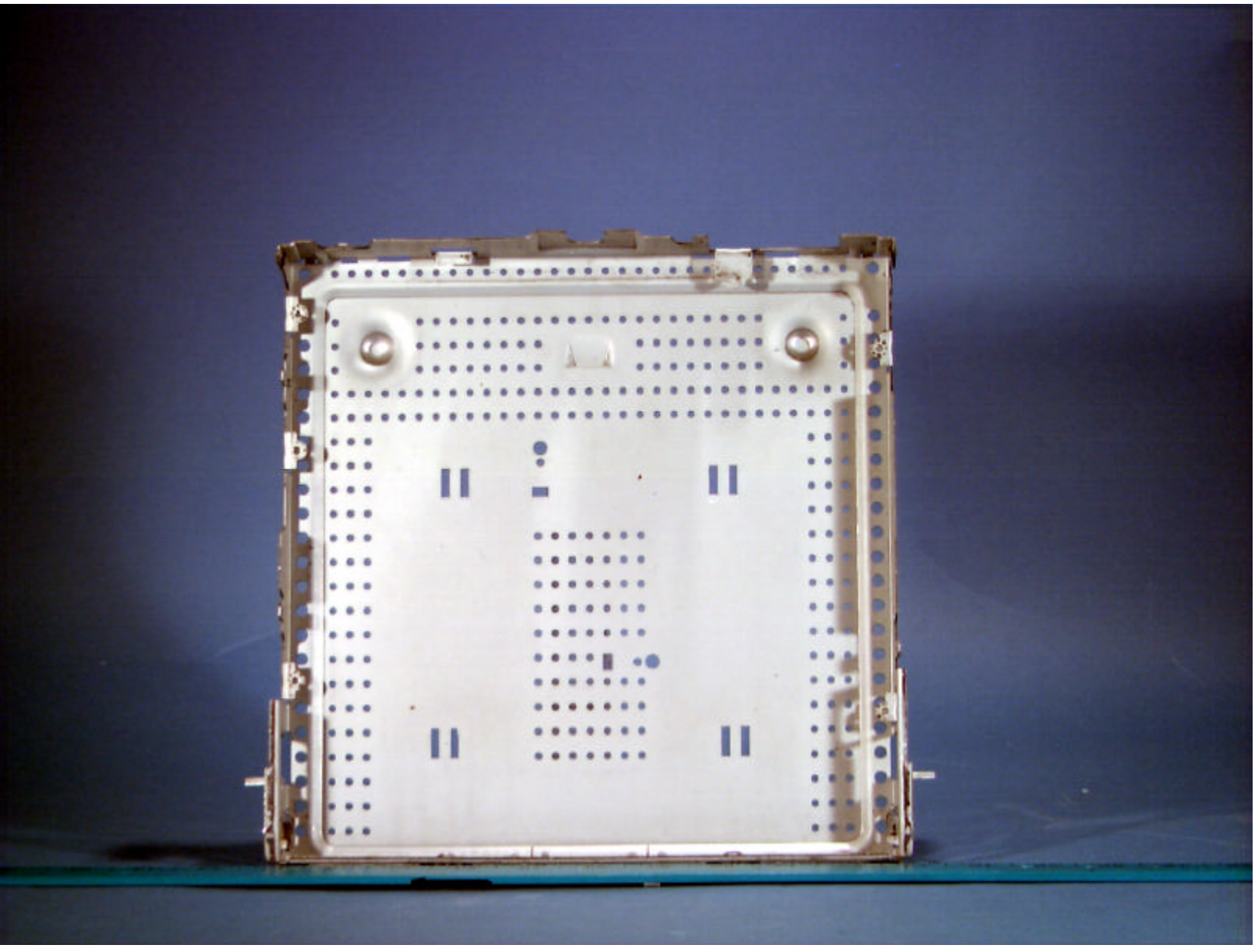
NVLAP Lab Code: 1004310



© 2000 PCTEST Lab

DAEWOO FCC ID: C5F7NFCMC719B
17-inch Color Monitor (Model: 719B)

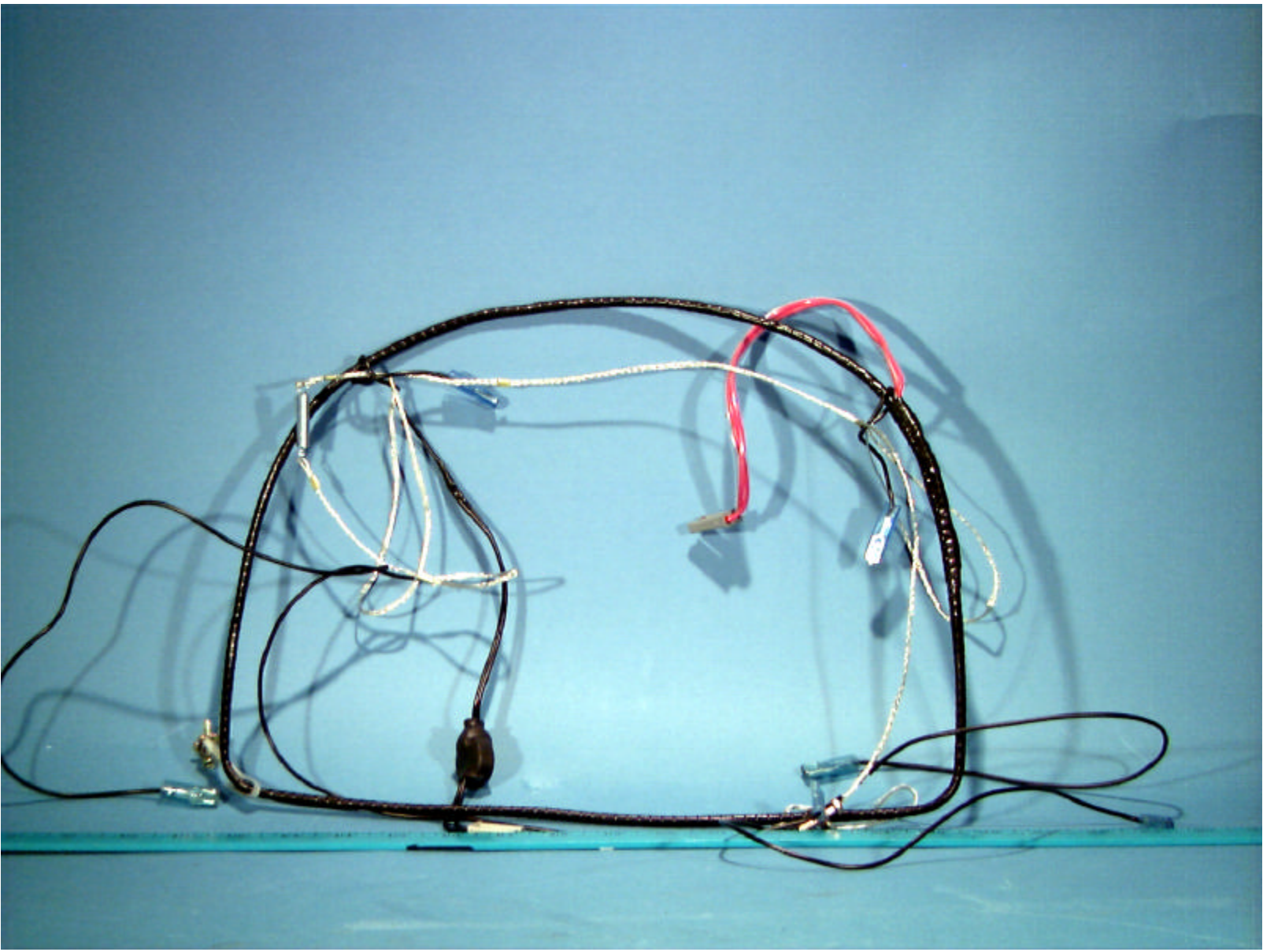
NVLAP Lab Code: 1004310



© 2000 PCTEST Lab

DAEWOO FCC ID: C5F7NFCMC719B
17-inch Color Monitor (Model: 719B)

NVLAP Lab Code: 1004310



© 2000 PCTEST Lab

DAEWOO FCC ID: C5F7NFCMC719B
17-inch Color Monitor (Model: 719B)

NVLAP Lab Code: 1004310

ORION



SA® 157029

RU® E55289

1050129825
M41KXU100XX021

MADE BY ORION, KOREA ③

Eigensichere Kathodenstrahlröhre nach Anlage III Röntgenverordnung.

WARNING THIS TUBE EMPLOYS INTEGRAL X-RADIATION AND IMPLOSION PROTECTION AND MUST BE REPLACED WITH TUBE OF SAME TYPE NUMBER FOR CONTINUED SAFETY.

AVERTISSEMENT : CE TUBE CATHODIQUE EMPLOIE UNE PROTECTION D'IMPLOSION INTÉGRALE. REMPLACER PAR UN TUBE DU MÊME TYPE NUMÉRO POUR LA SÛRETÉ CONTINUE.

HANDLING : HIGH-VACUUM PICTURE TUBE IS DANGEROUS TO HANDLE. REFER SERVICING TO QUALIFIED SERVICE PERSONNEL.

X-RAY WARNING : WHEN PICTURE TUBES ARE OPERATED AT VERY HIGH VOLTAGE AND WHEN PERSONAL EXPOSURE IS PROLONGED AT CLOSE RANGE, SPECIAL SHIELDING PRECAUTIONS AGAINST X-RAY RADIATION MAY BE NEEDED.