

ORION



LR101200

E55289

~~1069310562~~

M41KXU110XX021

MADE BY ORION, KOREA



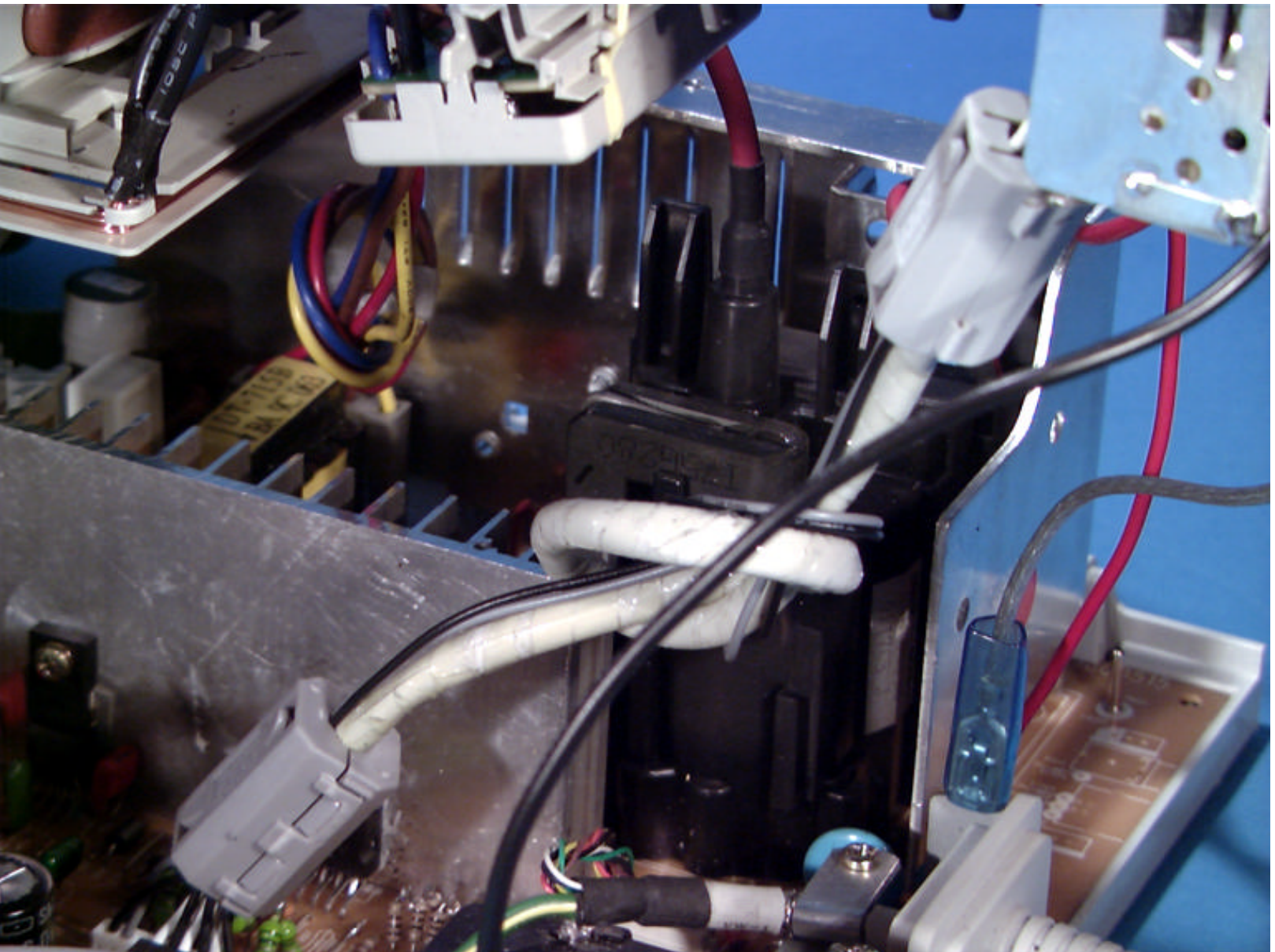
Eigensichere Kathodenstrahlröhre nach Anlage III Röntgenverordnung Jan 8, 1987.

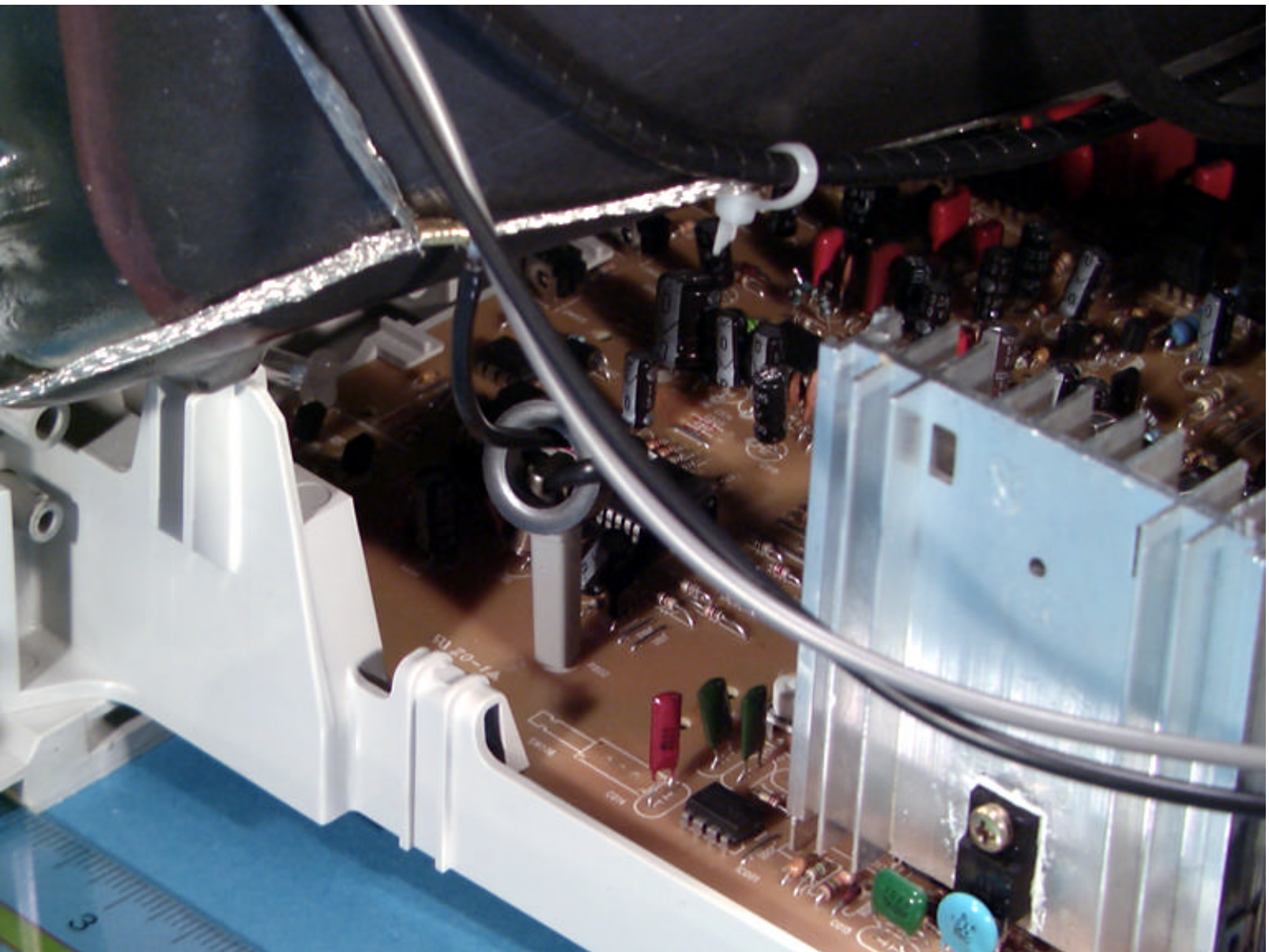
WARNING THIS TUBE EMPLOYS INTEGRAL X-RADIATION AND IMPLOSION PROTECTION AND MUST BE REPLACED WITH TUBE OF SAME TYPE NUMBER FOR CONTINUED SAFETY.

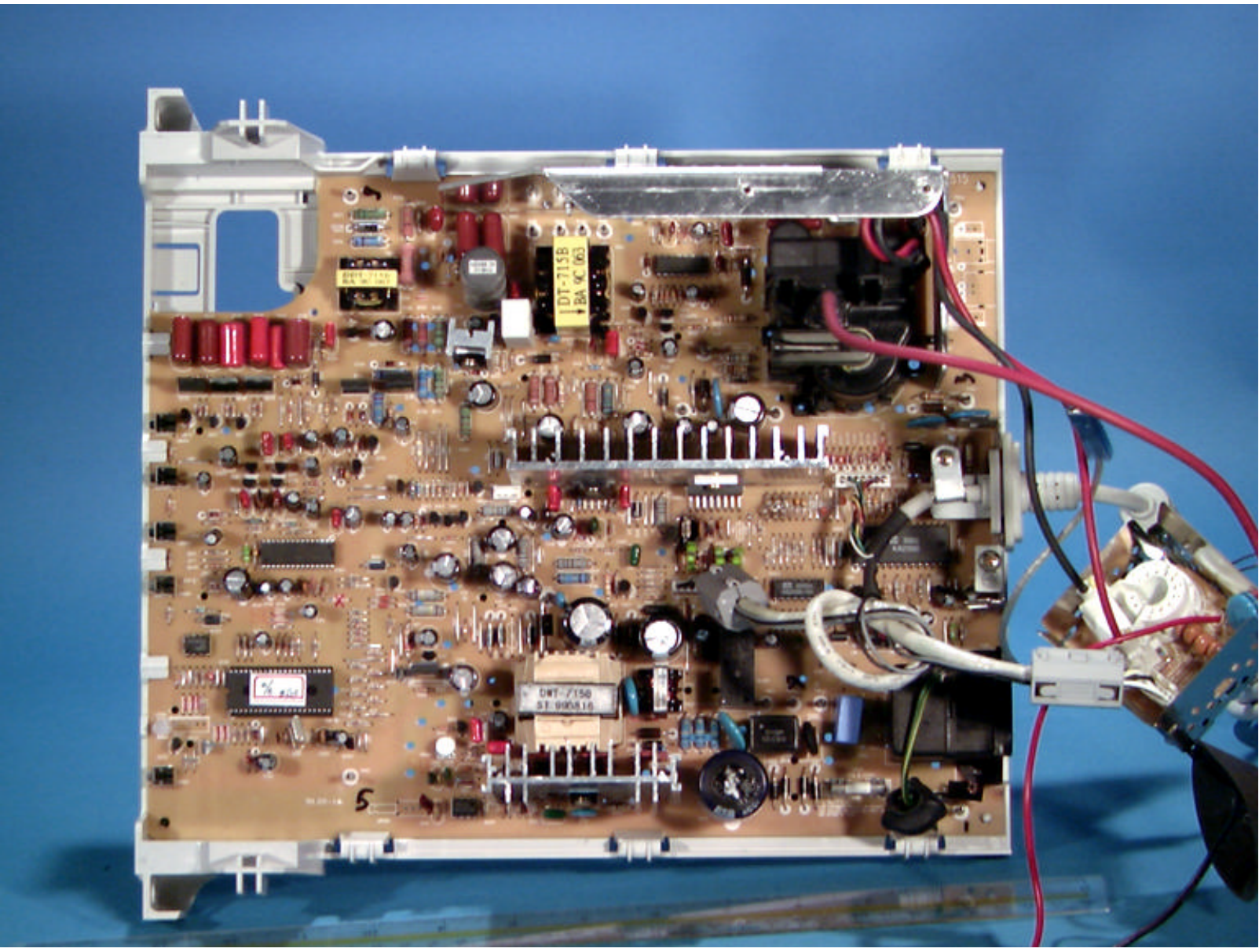
AVERTISSEMENT : CE TUBE CATHODIQUE EMPLOIE UNE PROTECTION D'IMPLOSION INTÉGRALE. REMPLACER PAR UN TUBE DU MÊME TYPE NUMÉRO POUR LA SÛRETÉ CONTINUE.

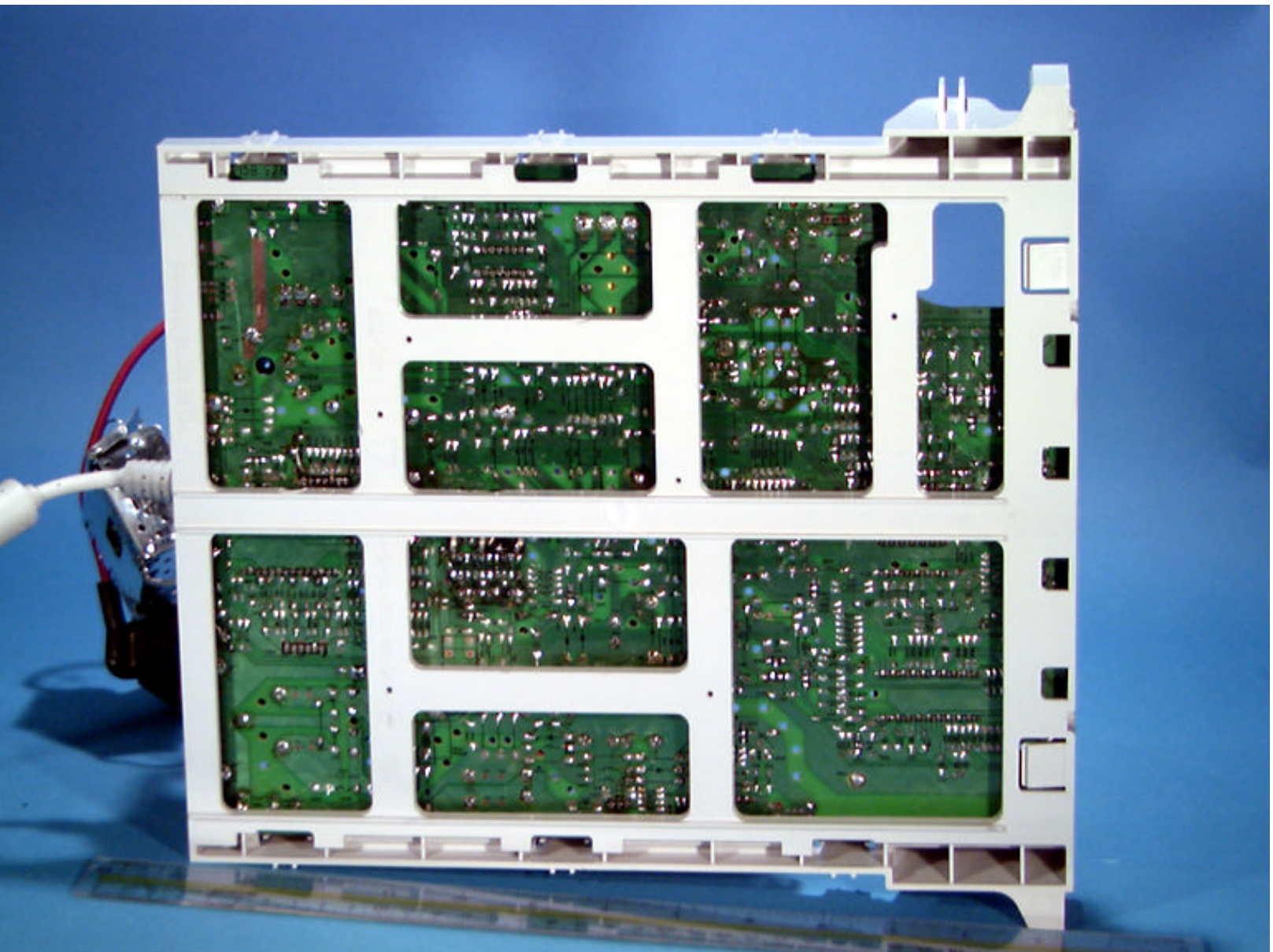
HANDLING : HIGH-VACUUM PICTURE TUBE IS DANGEROUS TO HANDLE. REFER SERVICING TO QUALIFIED SERVICE PERSONNEL.

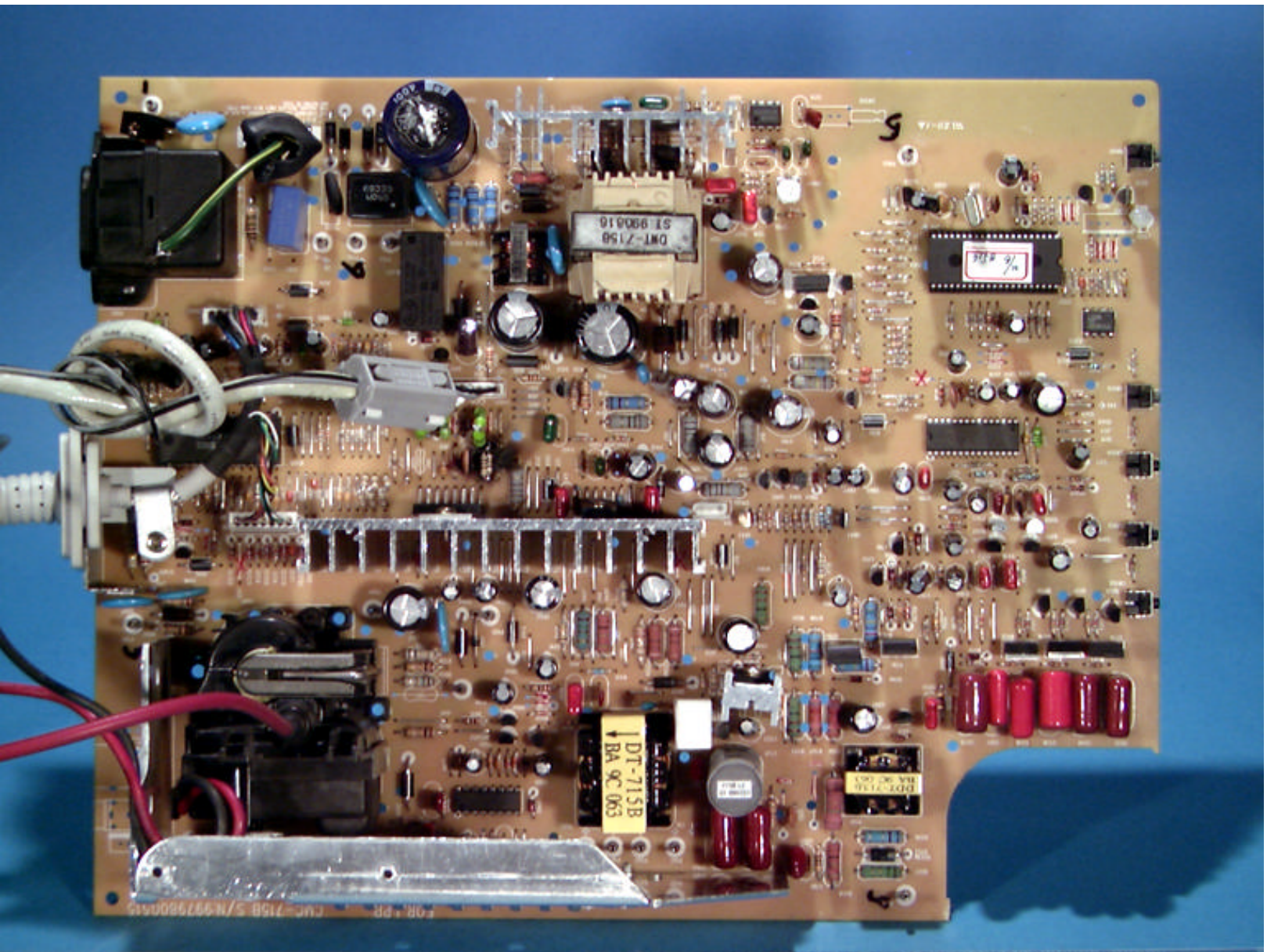
X-RAY WARNING : WHEN PICTURE TUBES ARE OPERATING AT VERY HIGH VOLTAGE AND WHEN PERSONAL EXPOSURE IS PROLONGED AT CLOSE RANGE, SPECIAL SHIELDING PRECAUTIONS AGAINST X-RAY RADIATION MAY BE NEEDED.



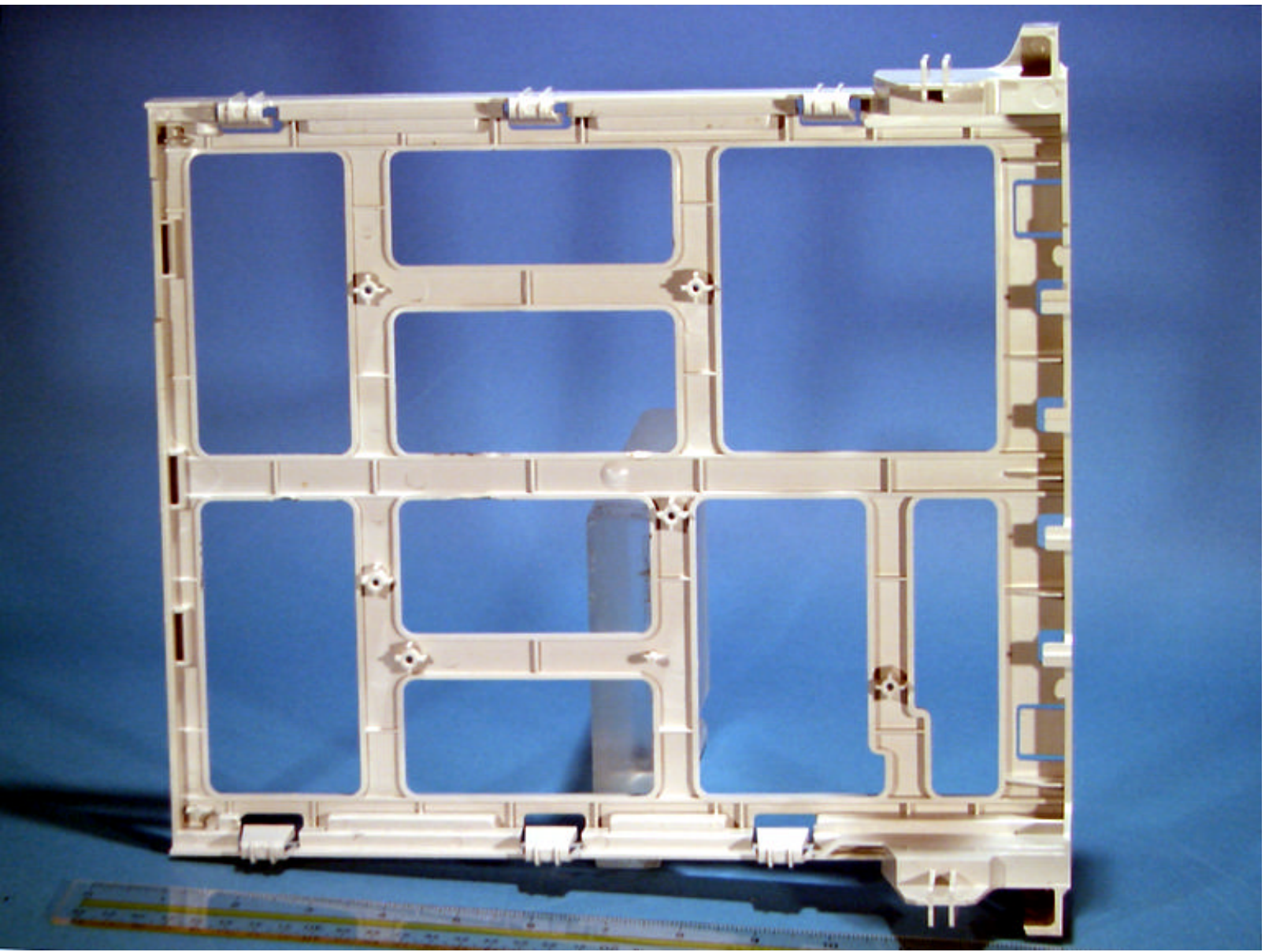










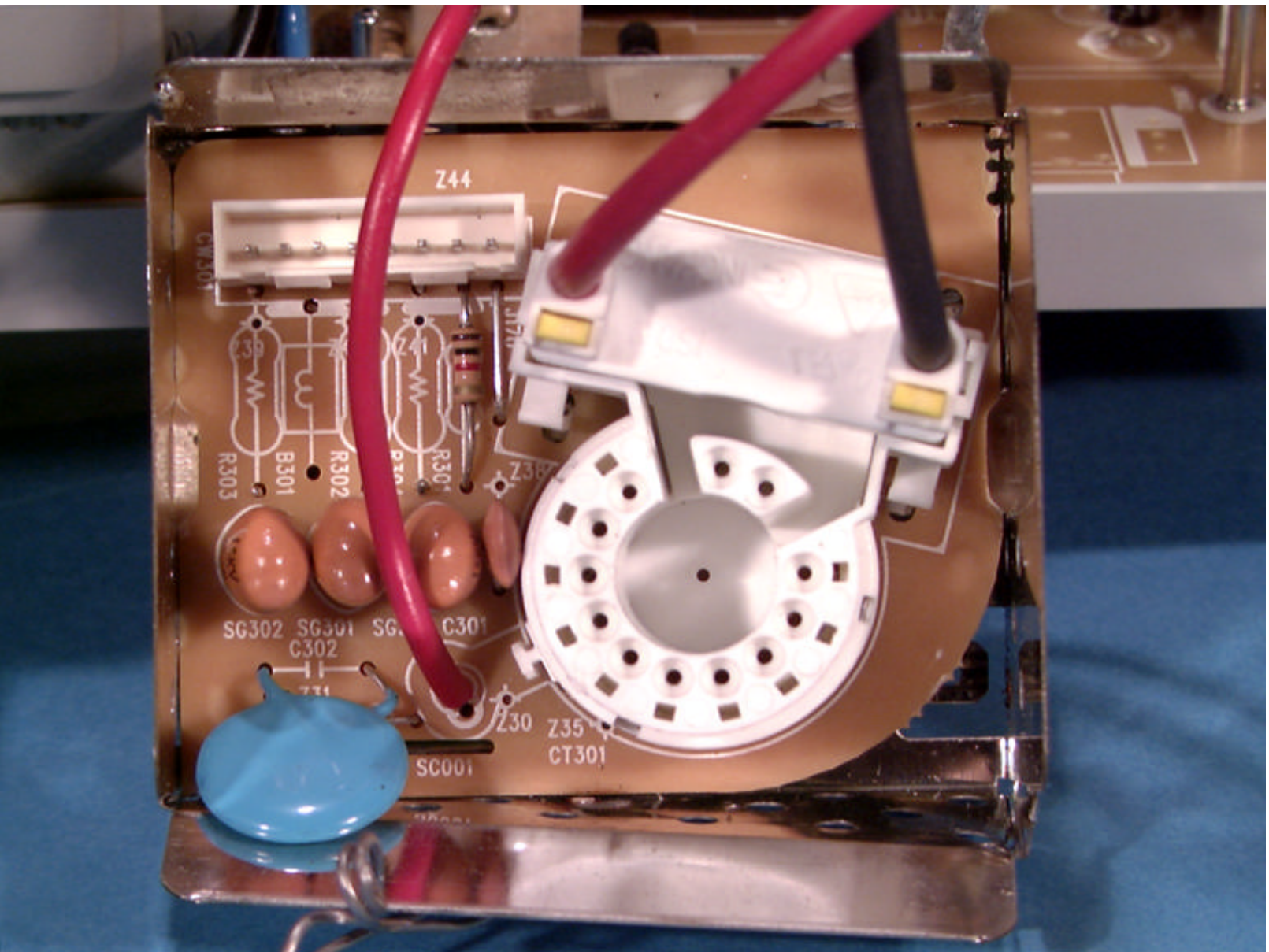


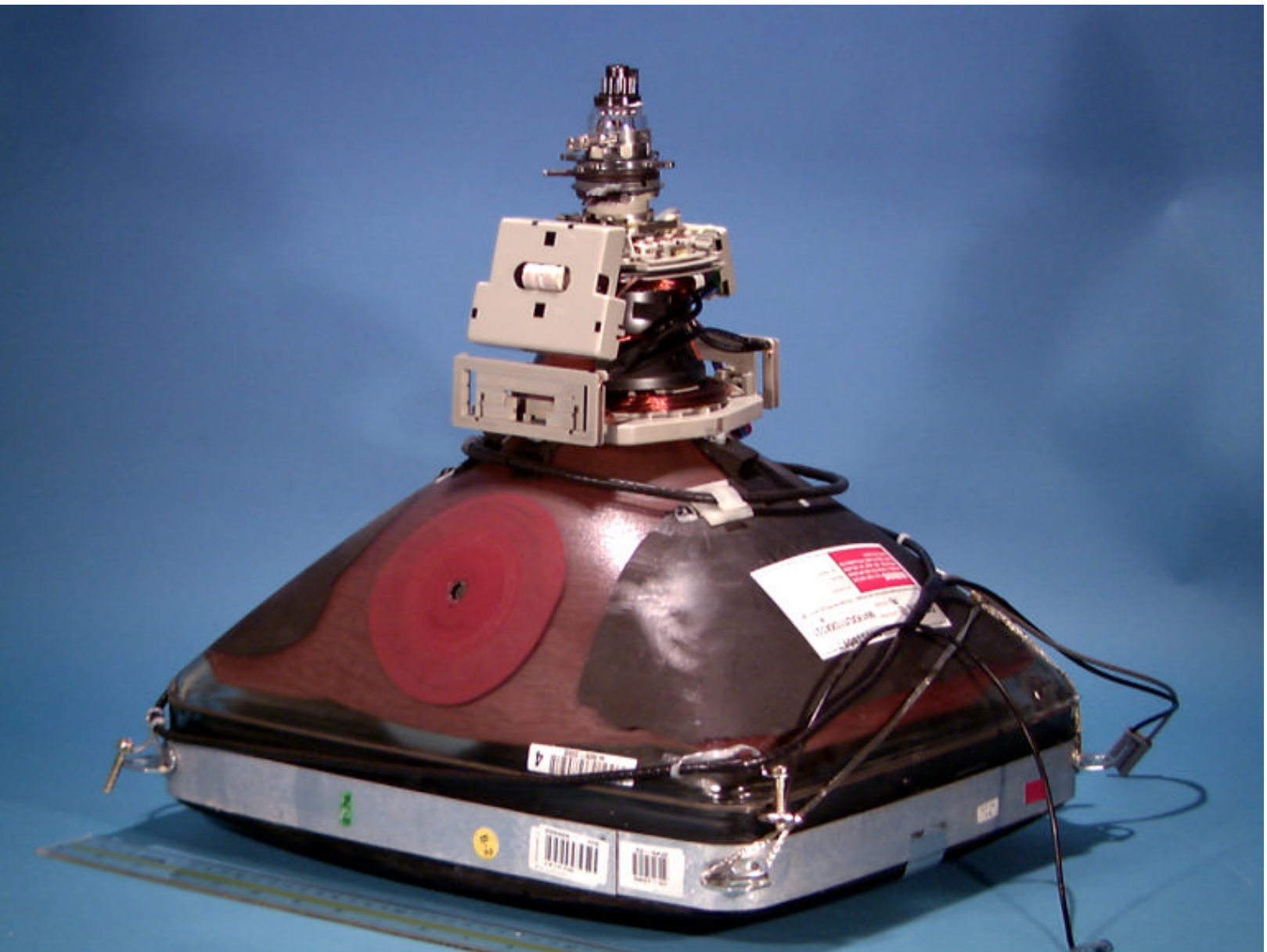


© 2000 PCTEST Lab

Daewoo FCC ID: C5F7NFCMC715B
17-inch Color Monitor

NVLAP Lab Code: 100431-0

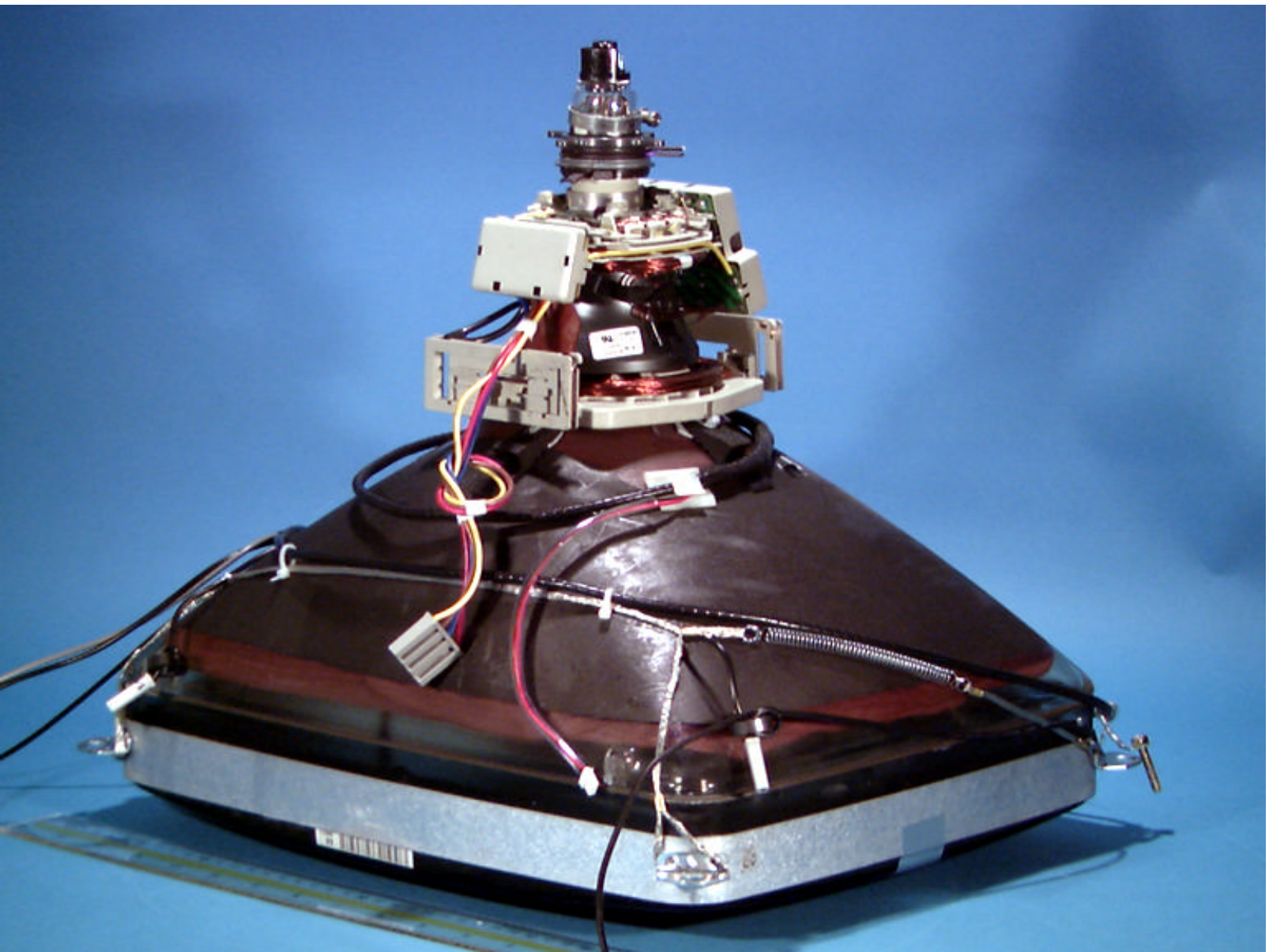


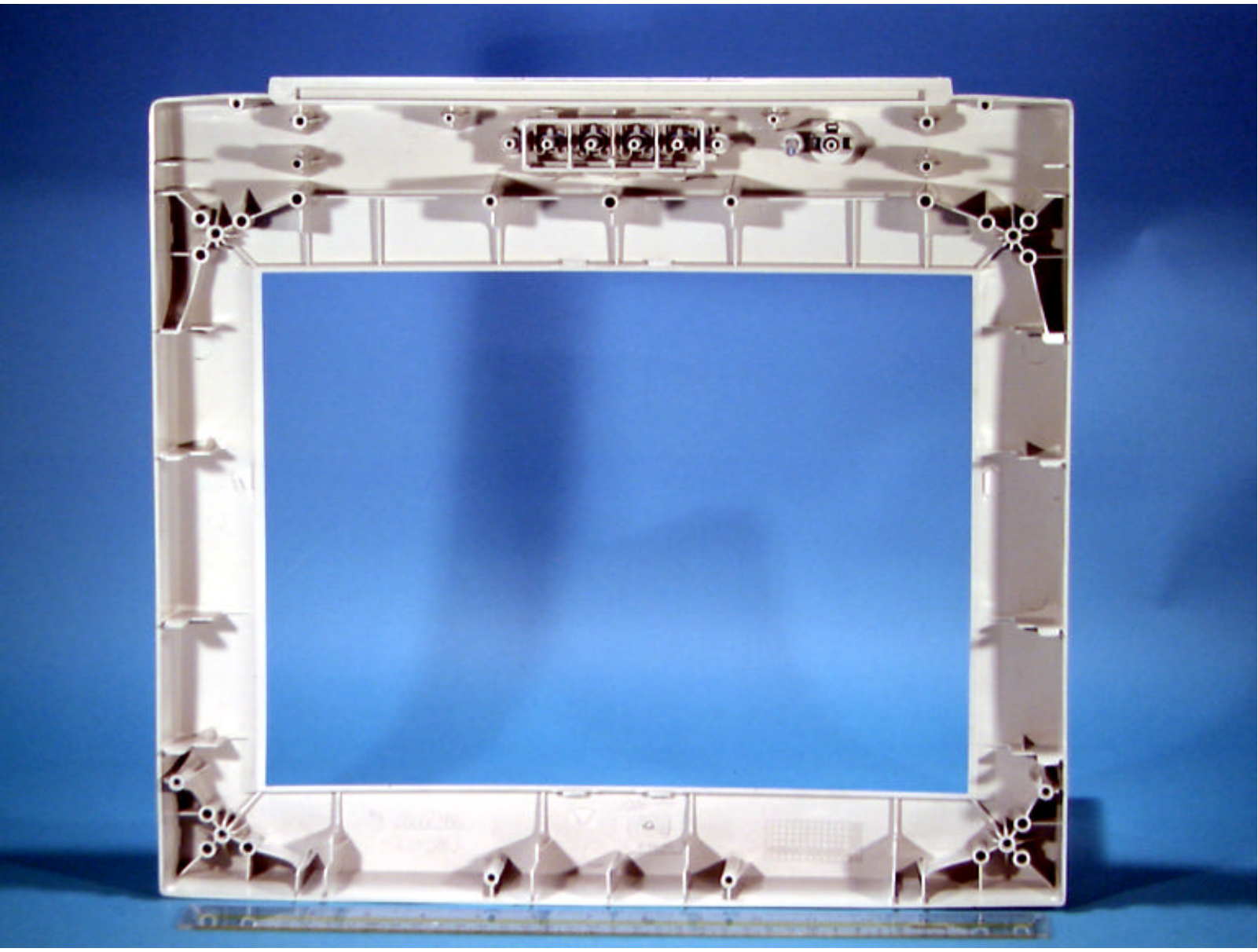


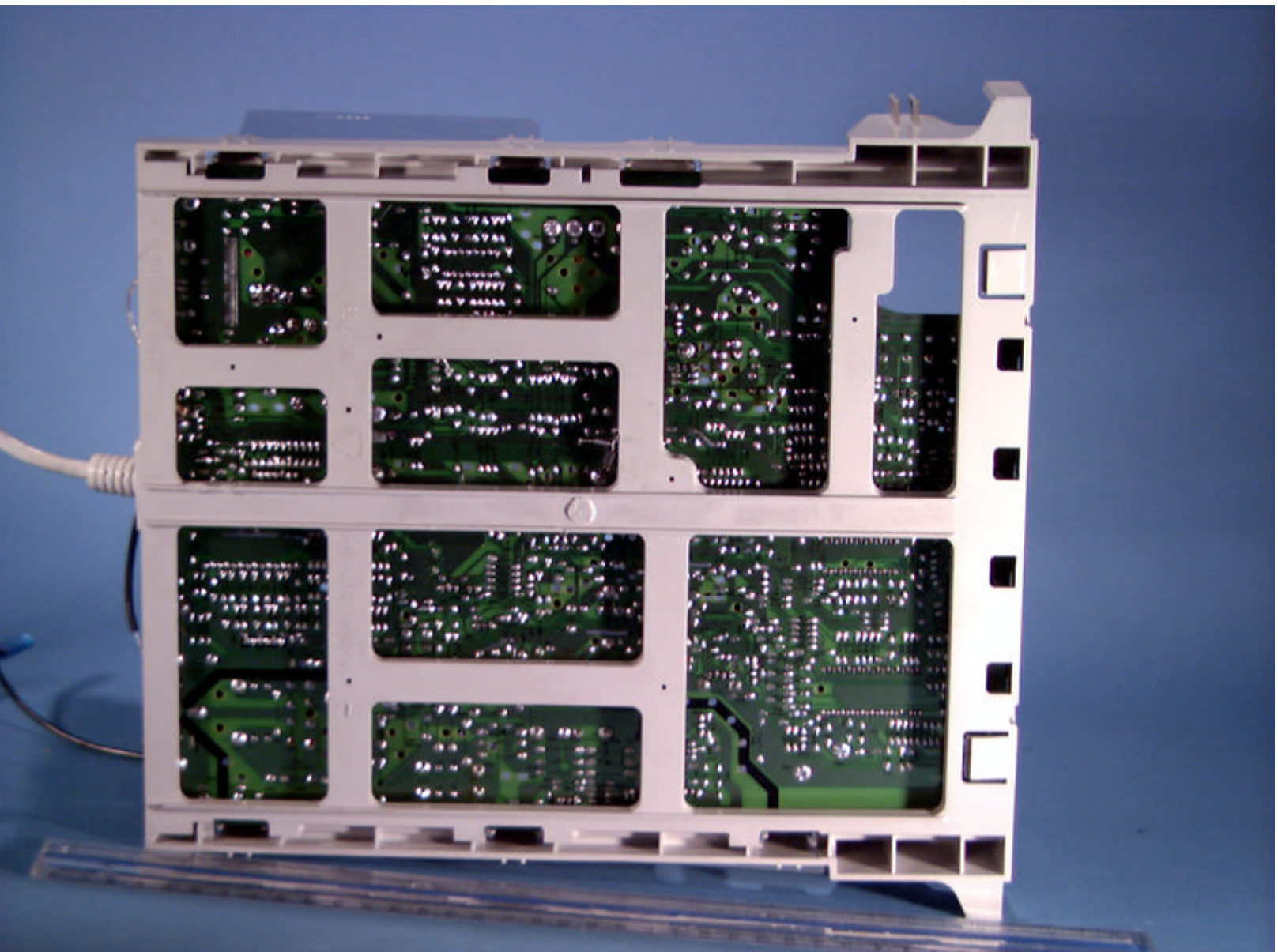
© 2000 PCTEST Lab

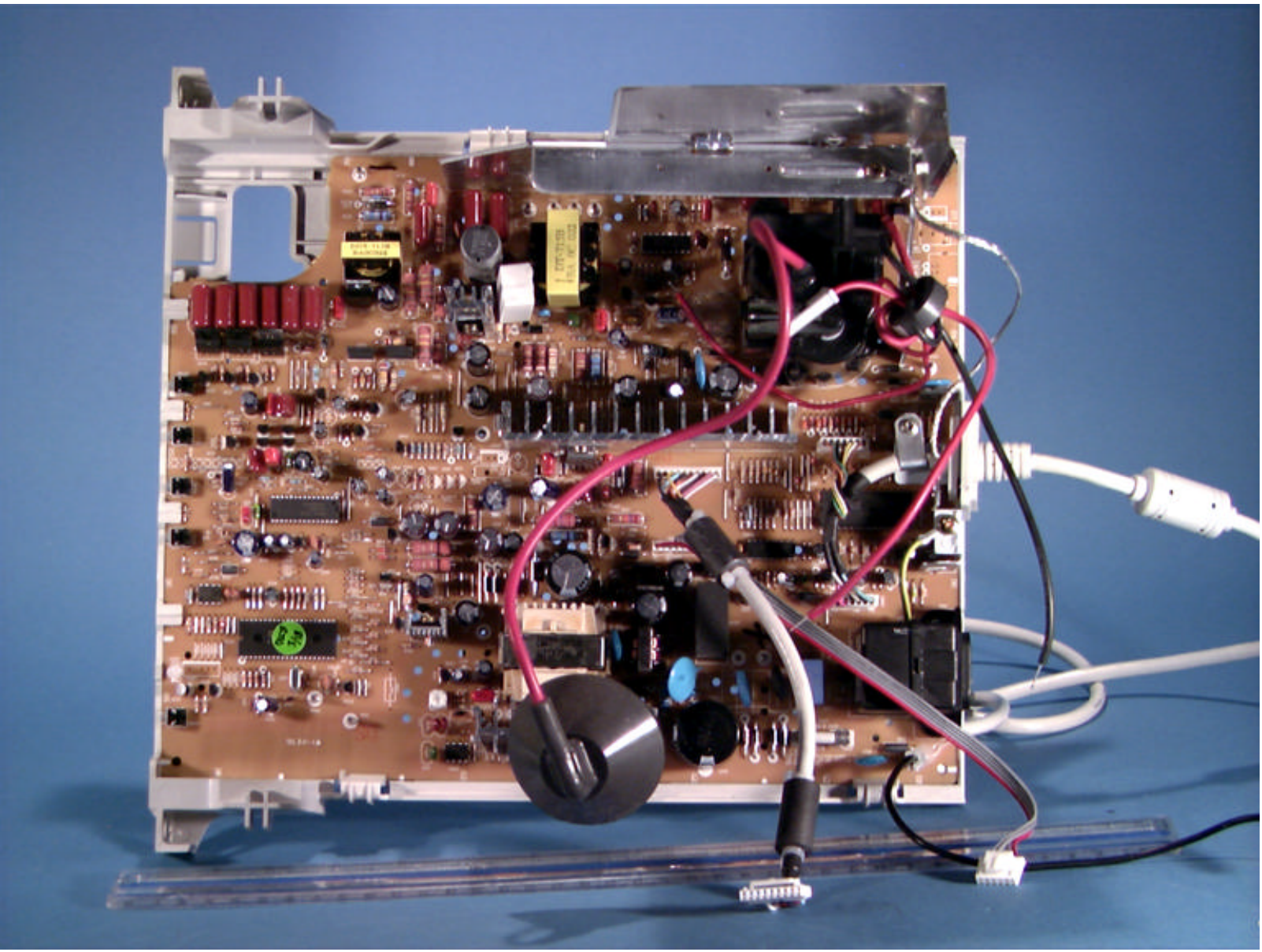
Daewoo FCC ID: C5F7NFCMC715B
17-inch Color Monitor

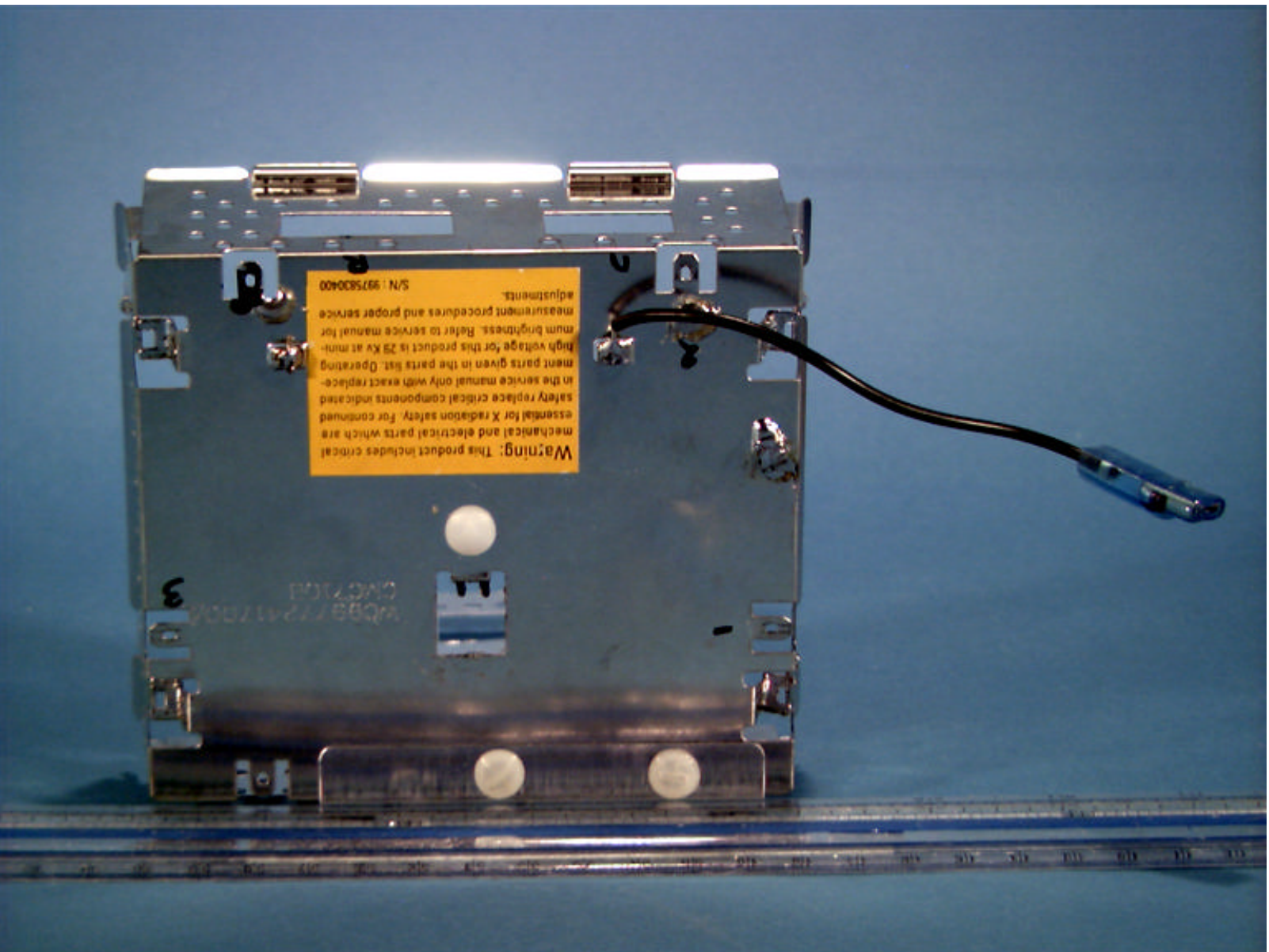
NVLAP Lab Code: 100431-0

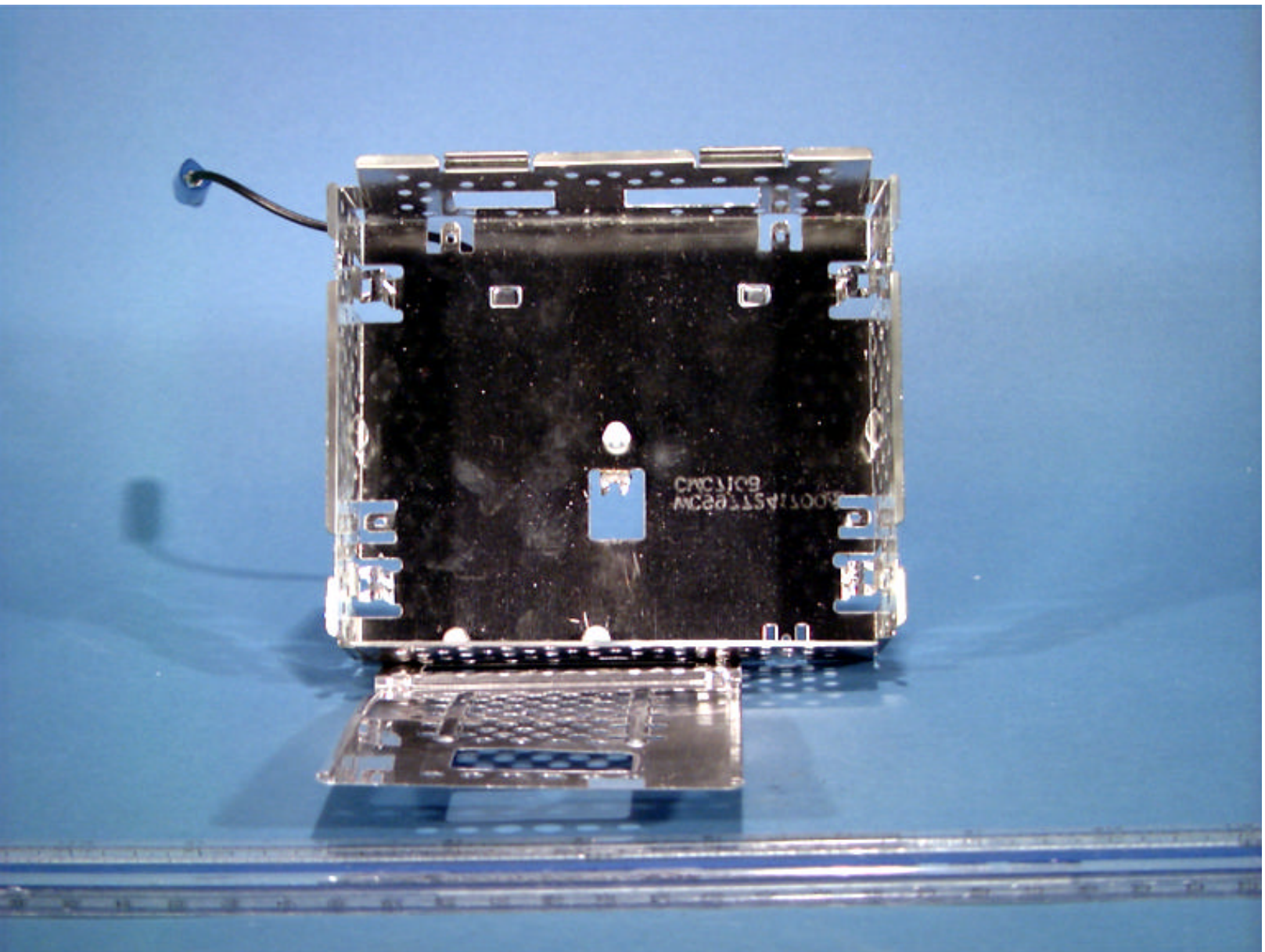


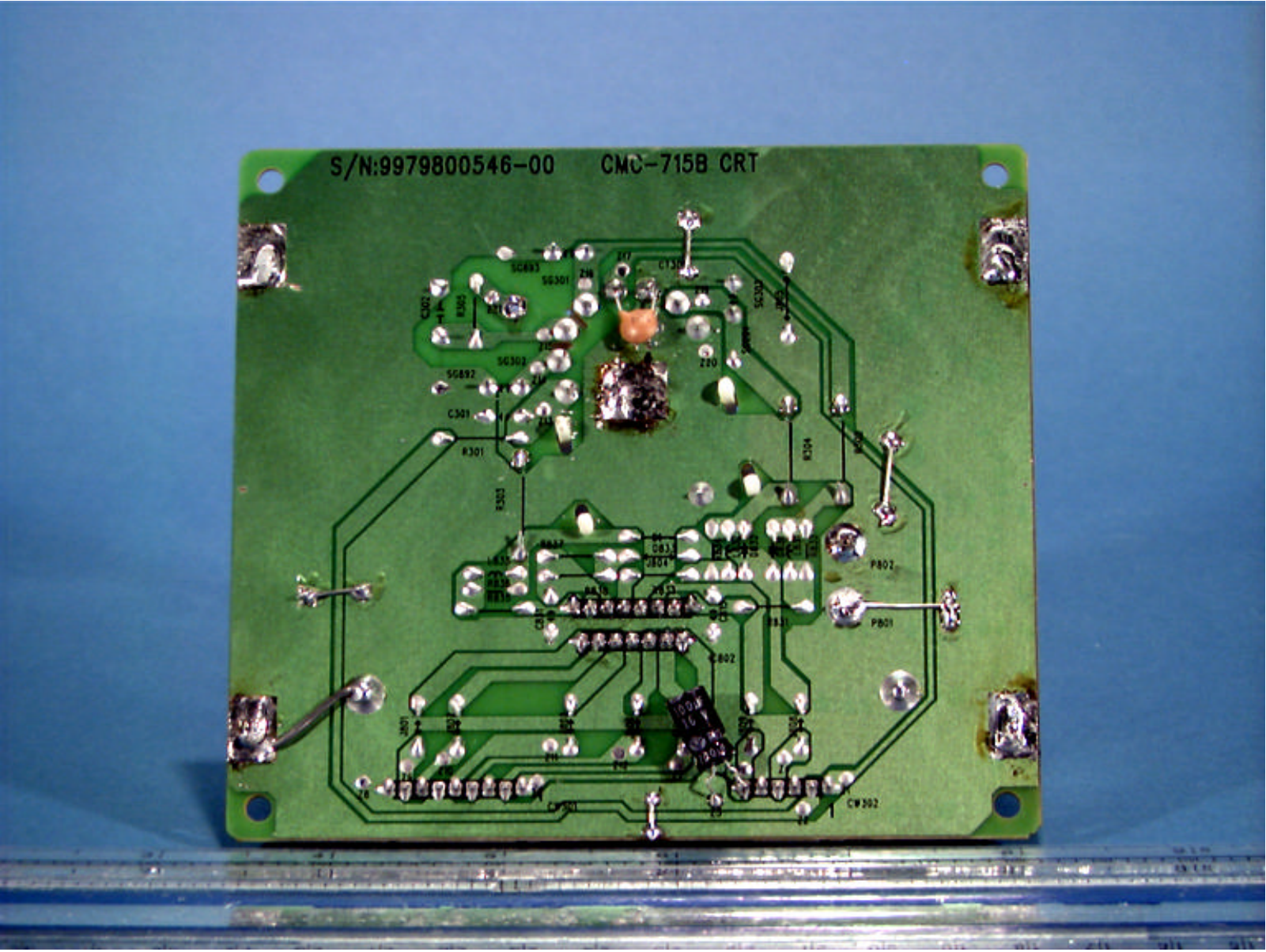












S/N:9979800546-00 CMC-715B CRT

