

OPERATION

Tips : Please read this OPERATION section for the proper safety information and the operating instructions before use of the oven. Prior to setting the controls, place one cup of water in the oven, in a heat-proof glass measuring cup, for testing purposes. The oven could be damaged if operate the oven in microwave mode without anything in the cavity.

Note : When the cooking time elapsed the oven beeps three times and "End" appears on the display. The glass turntable stops and the oven-light turns off. The oven will continue to beep every one-minute until either the STOP/CLEAR button is pressed or the door is opened. Opening the door while cook is in progress will cause the oven to stop and any displayed countdown will pause. If the START/SPEEDY COOK button is pressed, the countdown will resume. If the STOP/CLEAR button is pressed, the cook will cancel. The oven can display the set cooking time in 10 second steps (up to 5 minutes cooking time), in 30 second steps (up to 10 minutes cooking time), and in 1 minute steps (up to 60 minutes cooking time).

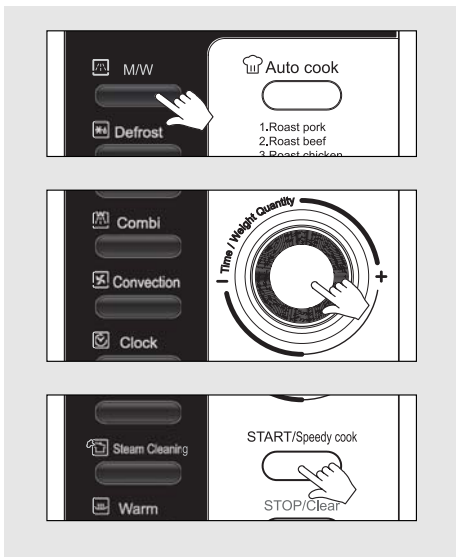
When the door is opened after cooking, the cooling fan may start to operate for 5 minutes to cool down the inside of oven. (Display shows "cool" and ":0 or clock")

Note that while the power cord is plugged-in and the door is opened, the fan will operate. This is normal operating conditions that no need to be worried.

Also note that when the Cooling mode operates, lamp, tray, and fan runs at the same time and "cool" is show on the display.

MICROWAVE COOKING

This microwave cooking method allows you to cook food for a desired time. In addition to the maximum power level(100%), you can select different microwave power from 9 other levels, 10% to 90% for the foods that require slower cooking. If you have used the appliance for grilling, convection or combination cooking, let the oven cool down before using again. Never switch the microwave oven on when it is empty.



1. Press the **MW** button once. **MW** indicator (☑) lights. "P-HI" shows in display.
2. Select the appropriate power level by pressing the **MW** button again until the corresponding percentage is displayed. Refer to the power level table below for further details.
3. Turn the **dial knob** to set the cooking time. For a cooking time of 5 minutes 30 seconds, turn the **dial knob** to the right to set 5:30. (up to 60 minutes) "5:30" shows in display.
4. Press the **START/SPEEDY COOK** button. The oven light comes on and the turntable starts rotating. Cooking starts and the time in the display will count down.

Note : The oven will automatically work on 100% microwave power if a cooking time is entered without the power level previously being selected. You can check the power level while cooking is in progress by pressing the **MW** button.

Power level table

Power level	percentage	Output	Power level	percentage	Output
P-HI	100%	900W	P-50	50%	450W
P-90	90%	810W	P-40	40%	360W
P-80	80%	720W	P-30	30%	270W
P-70	70%	630W	P-20	20%	180W
P-60	60%	540W	P-10	10%	90W
			P-00	0%	0W

