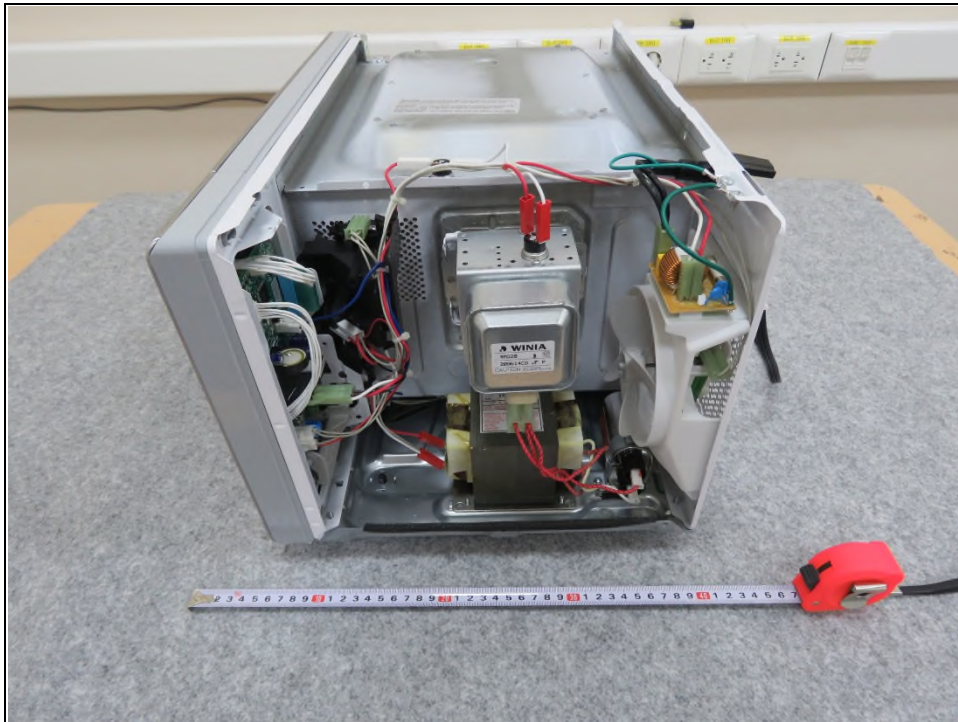
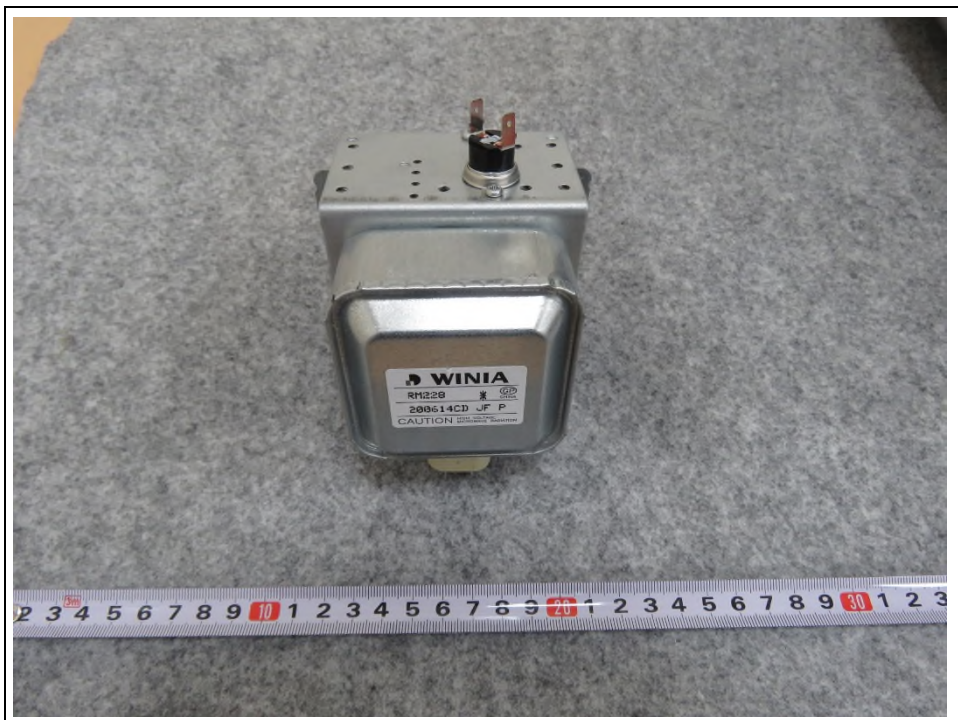


3. Inside View of EUT



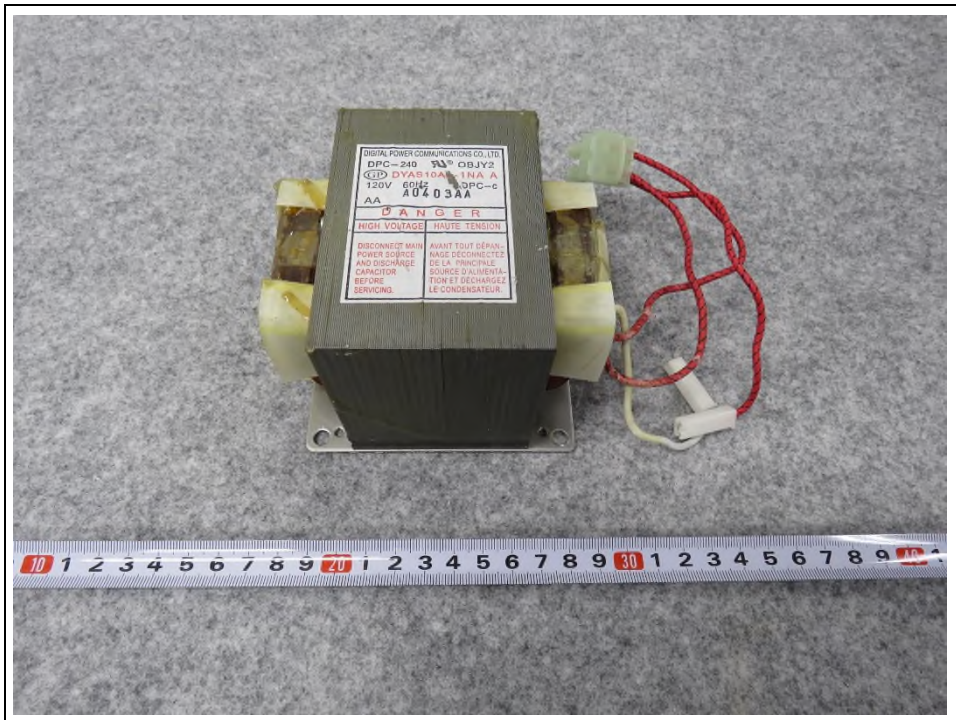
4. Front View of MAGNETRON



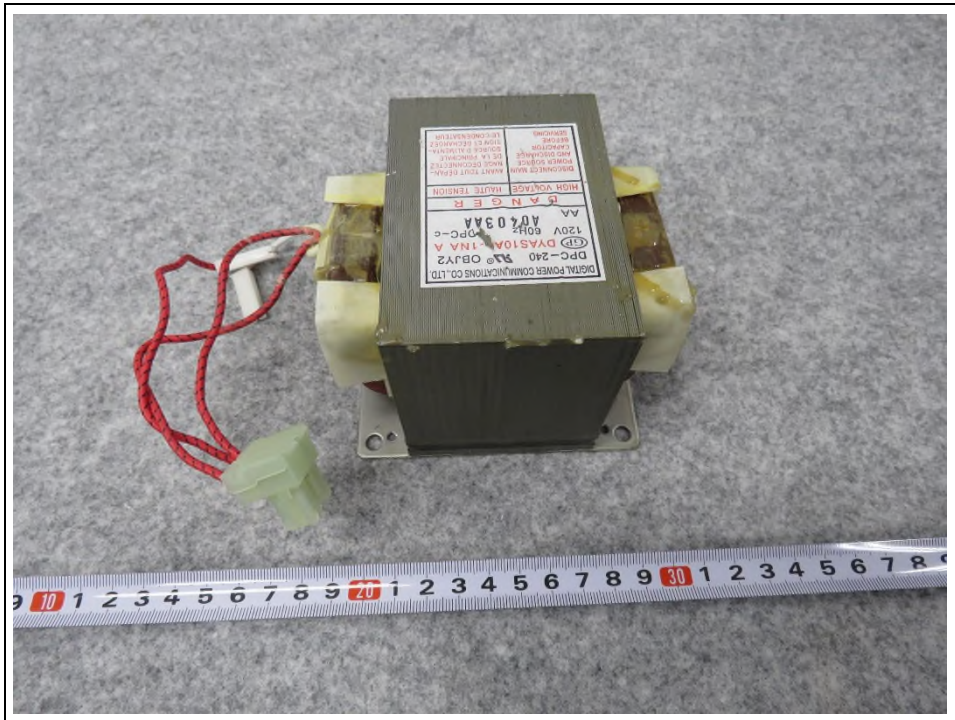
5. Rear View of MAGNETRON



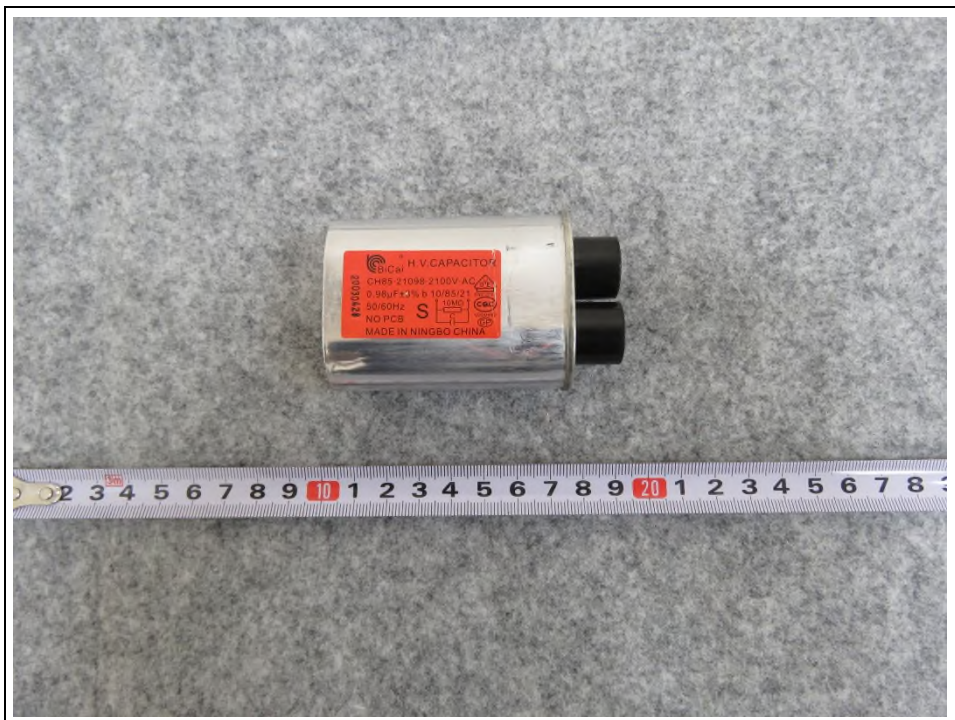
6. Front View of TRANS H.V.



7. Rear View of TRANS H.V.



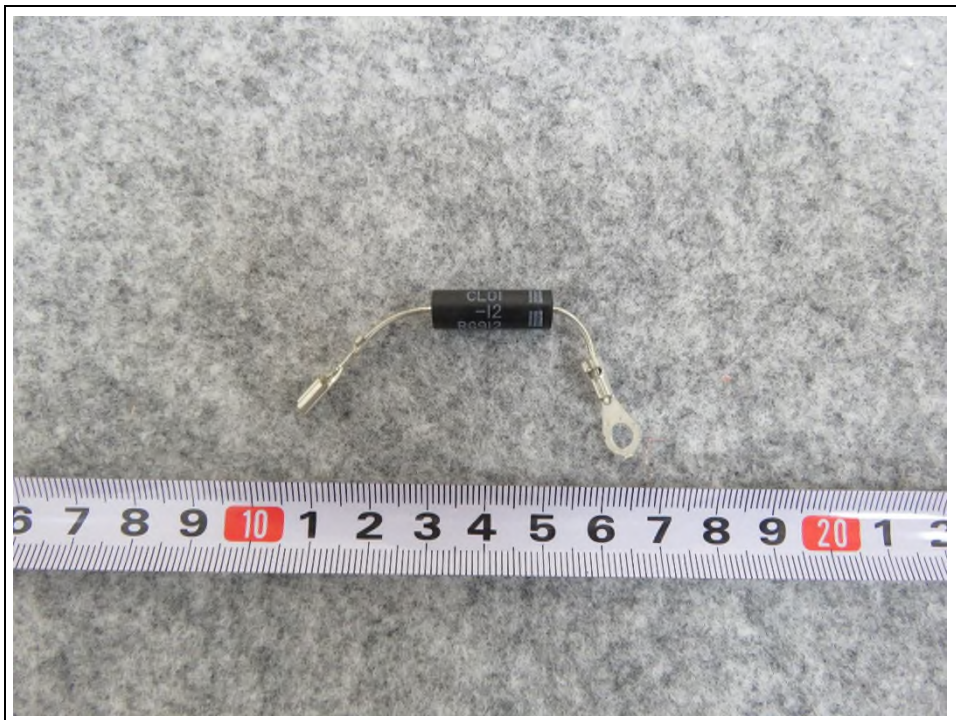
8. Front View of CAPACITOR H.V.



9. Rear View of CAPACITOR H.V.



10. Front View of DIODE H.V.



11. Rear View of DIODE H.V.



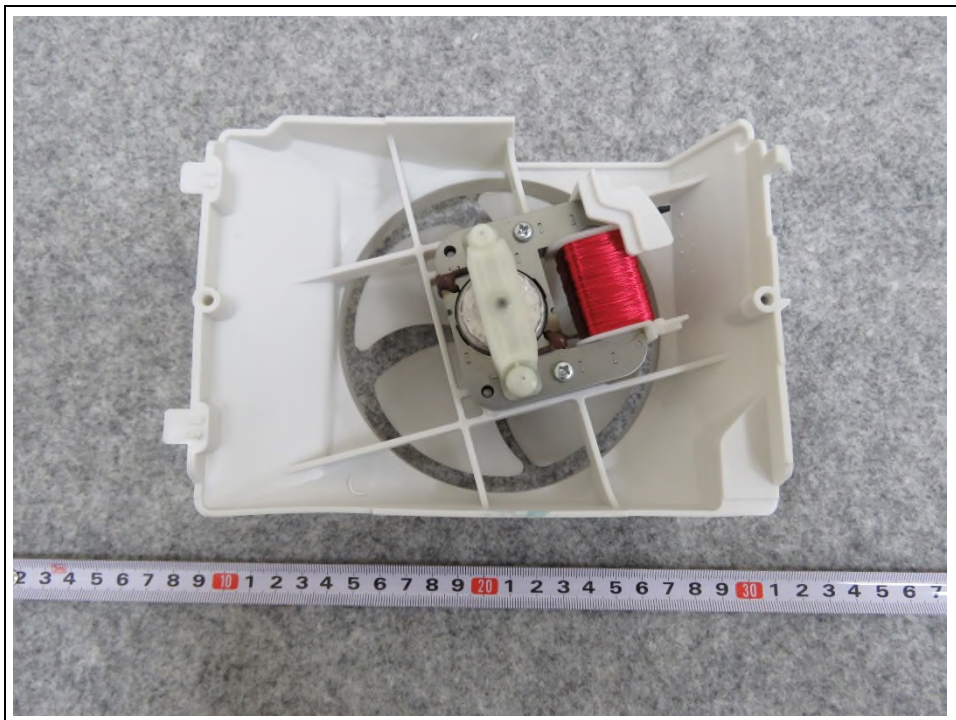
12. Front View of TRAY MOTOR



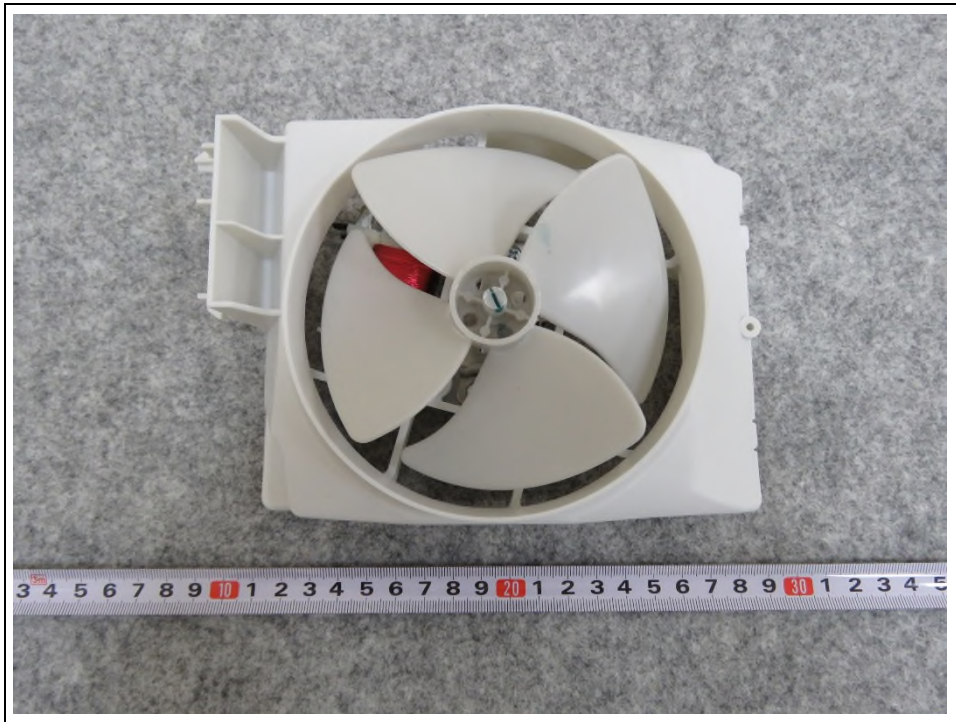
13. Rear View of TRAY MOTOR



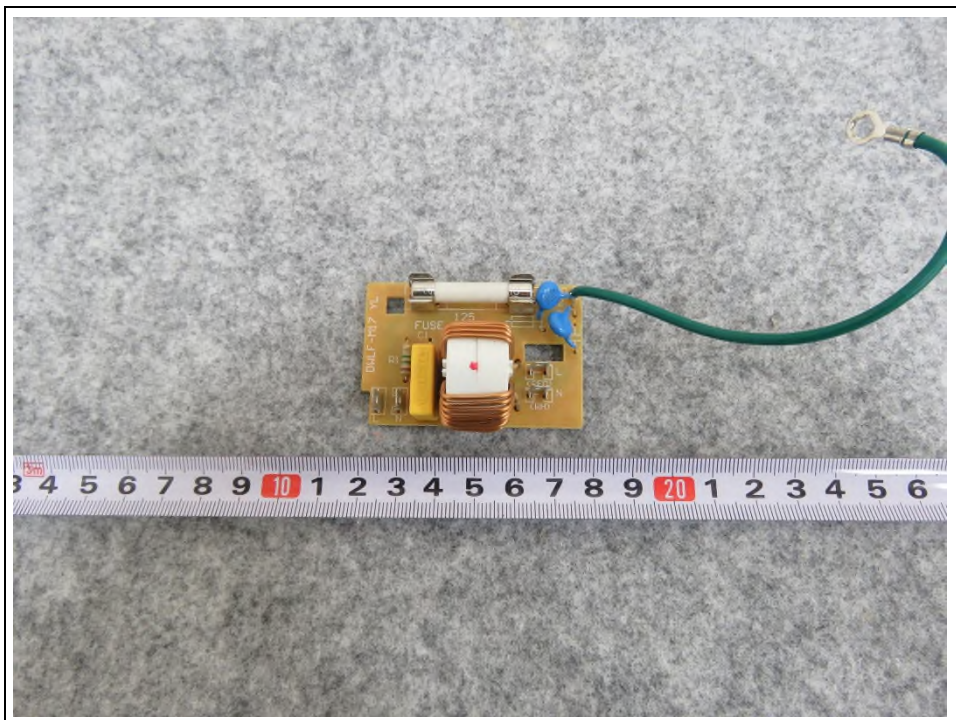
14. Front View of FAN MOTOR



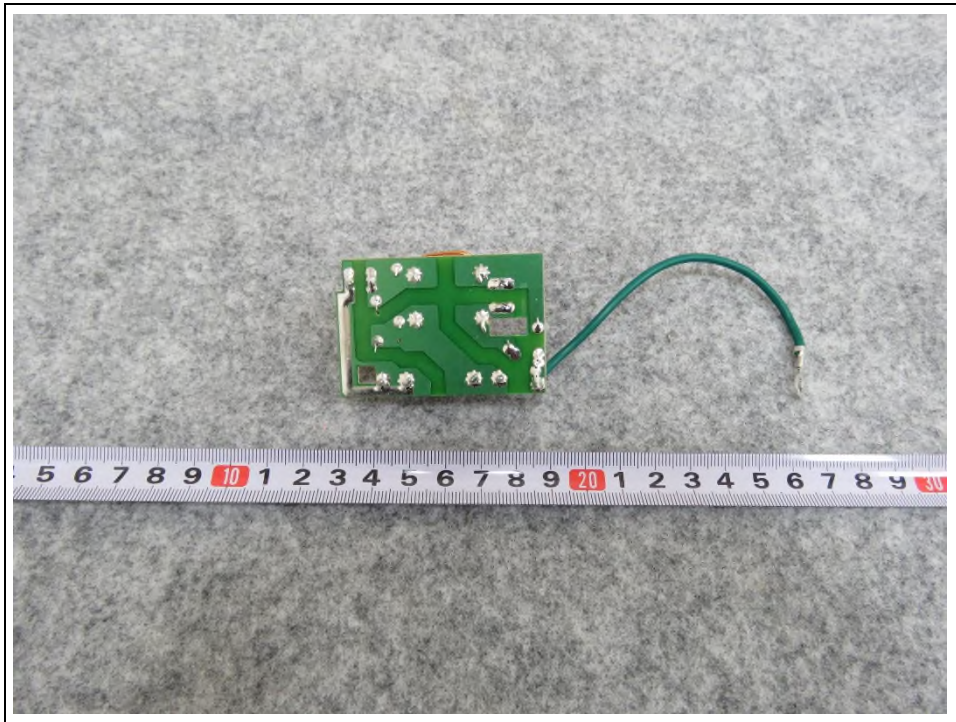
15. Rear View of FAN MOTOR



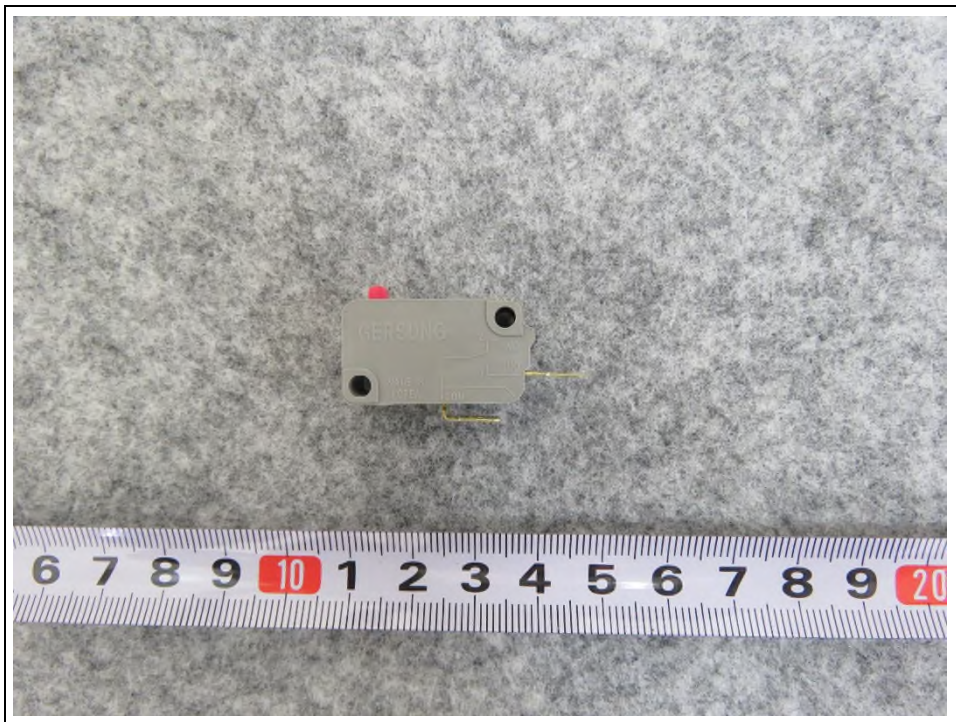
16. Front View of NOISE FILTER



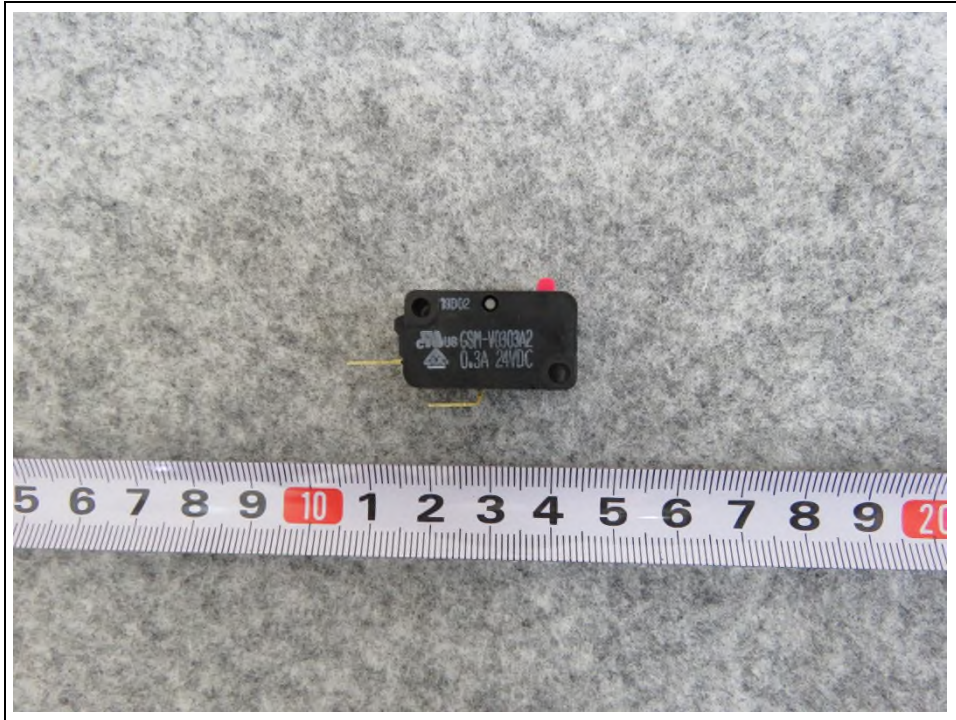
17. Rear View of NOISE FILTER



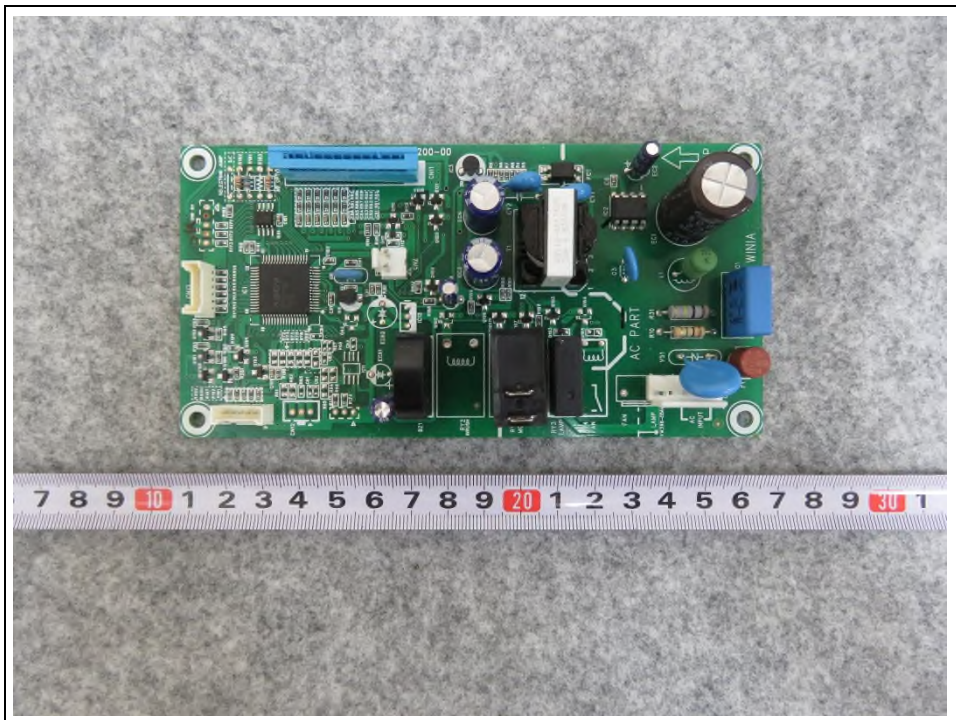
18. Front View of INTERLOCK SWITCH



19. Rear View of INTERLOCK SWITCH



20. Front View of Main PCB



21. Rear View of Main PCB

