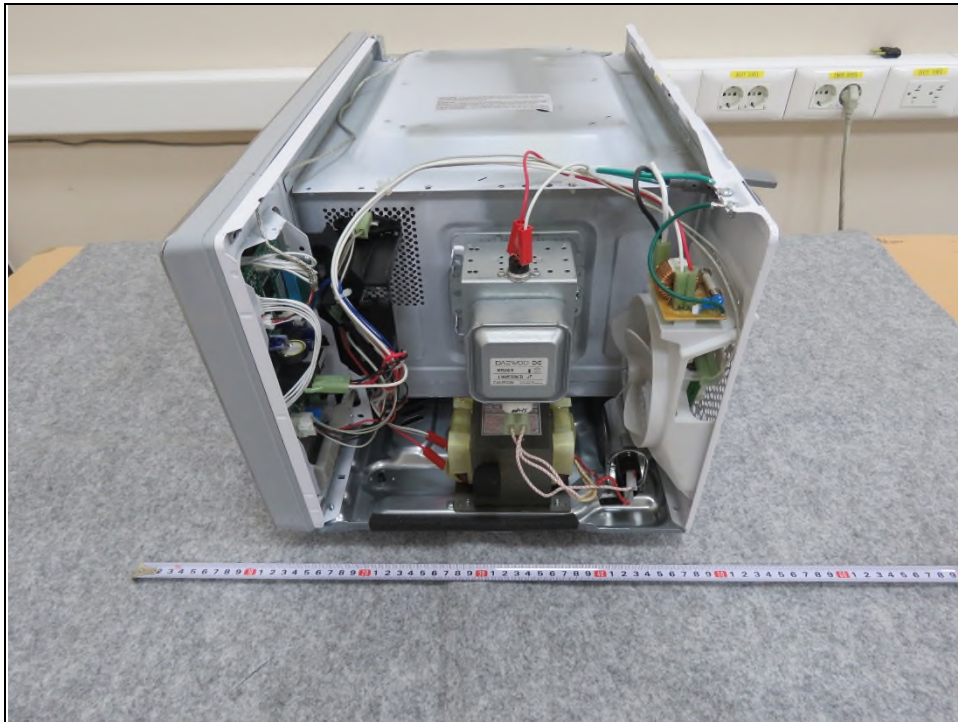


### 3. Inside View of EUT



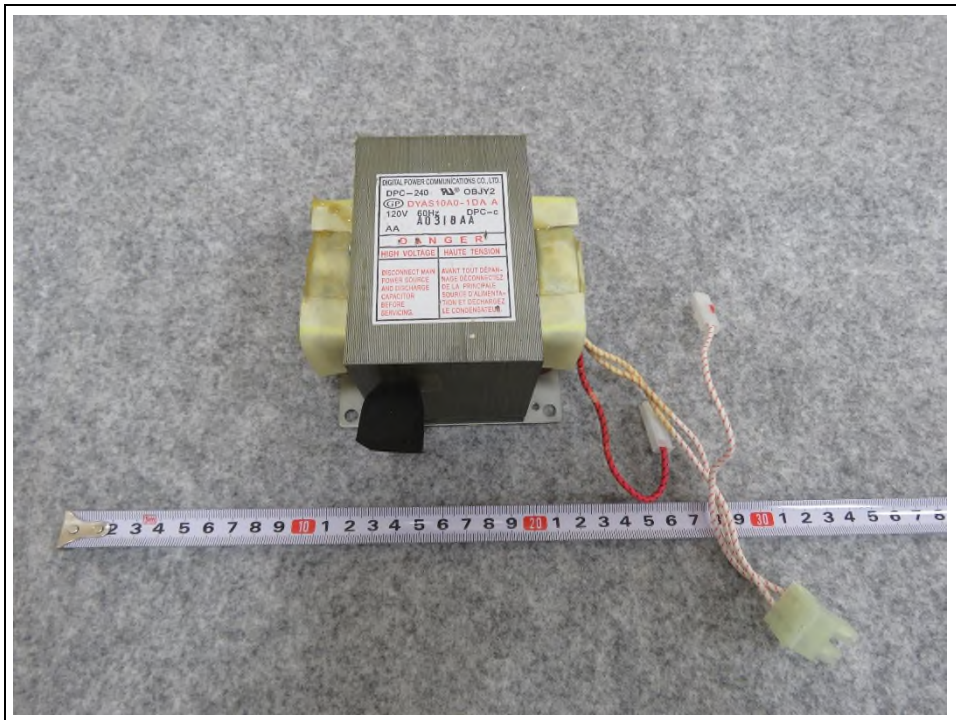
### 4. Front View of MAGNETRON



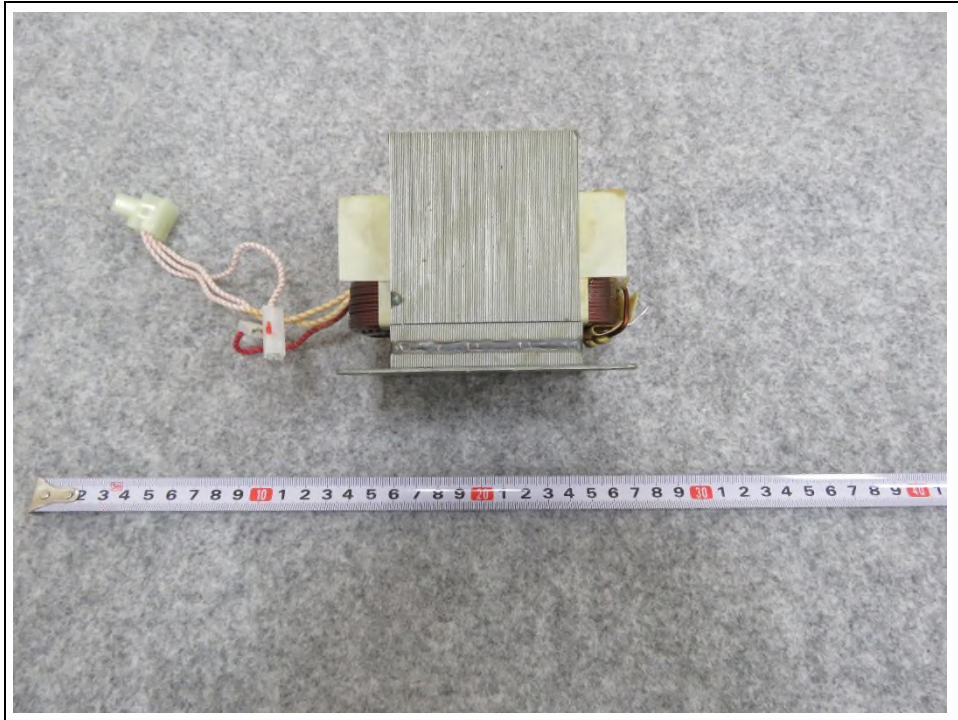
### 5. Rear View of MAGNETRON



### 6. Front View of TRANS H.V.



**7. Rear View of TRANS H.V.**



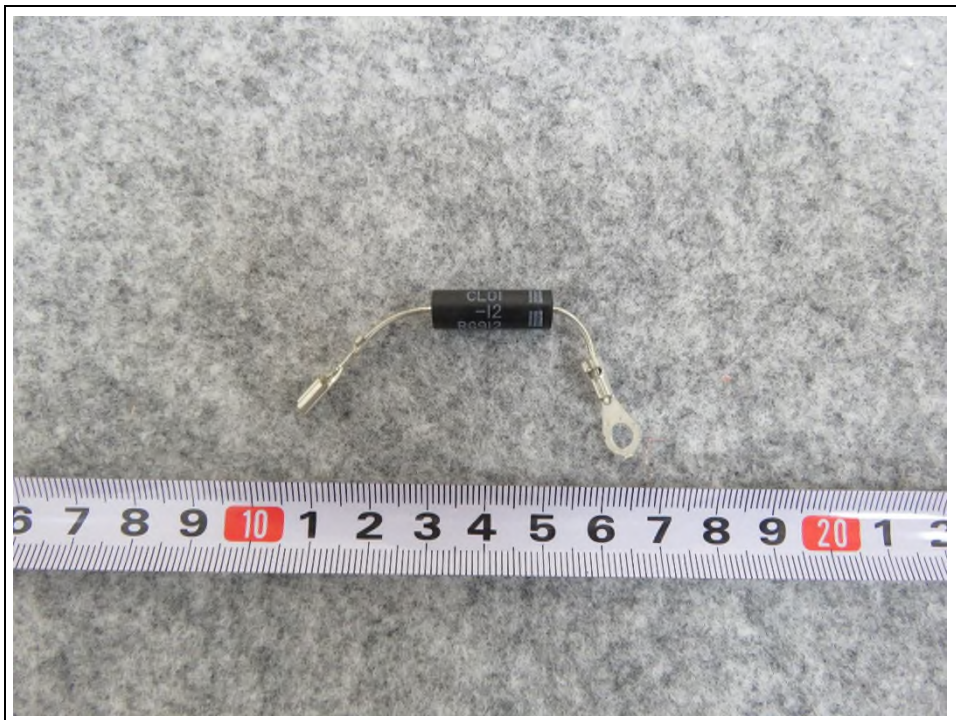
**8. Front View of CAPACITOR H.V.**



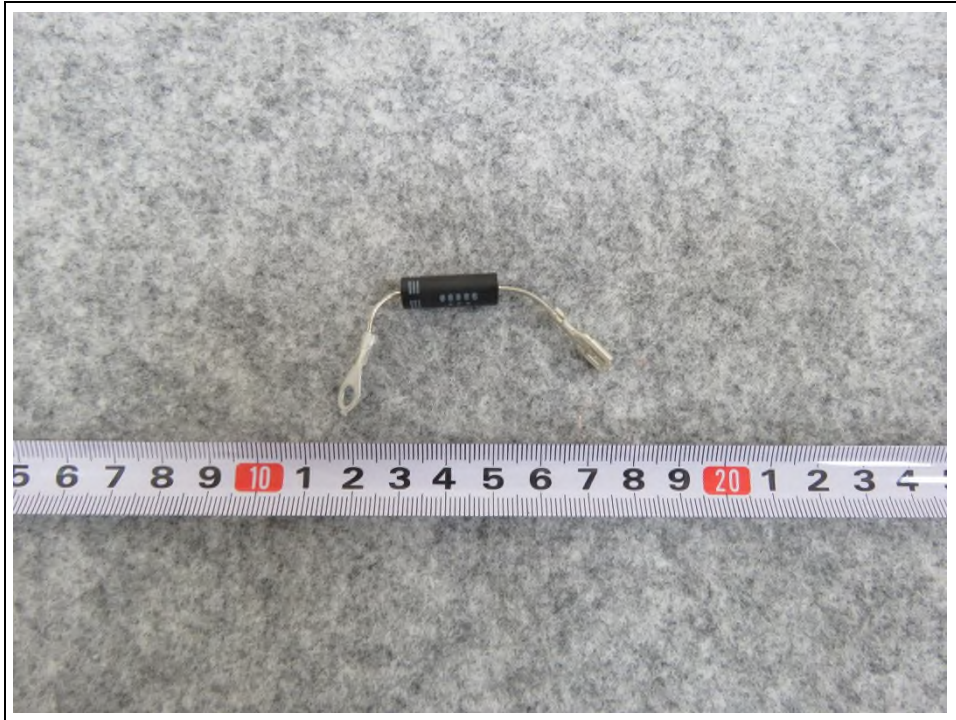
**9. Rear View of CAPACITOR H.V.**



**10. Front View of DIODE H.V.**



11. Rear View of DIODE H.V.



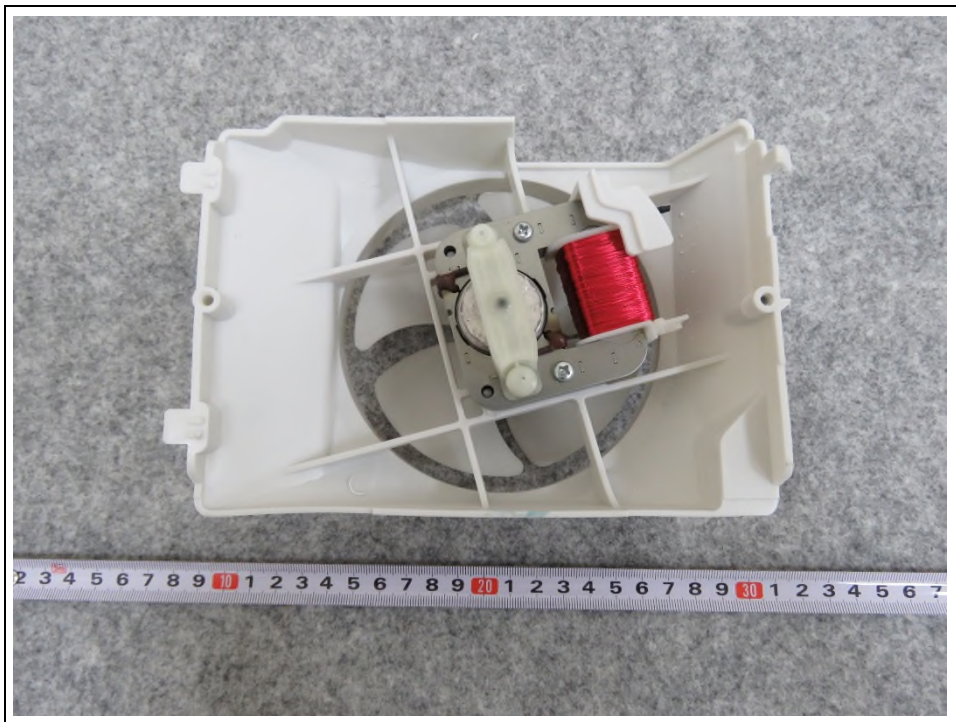
12. Front View of TRAY MOTOR



13. Rear View of TRAY MOTOR



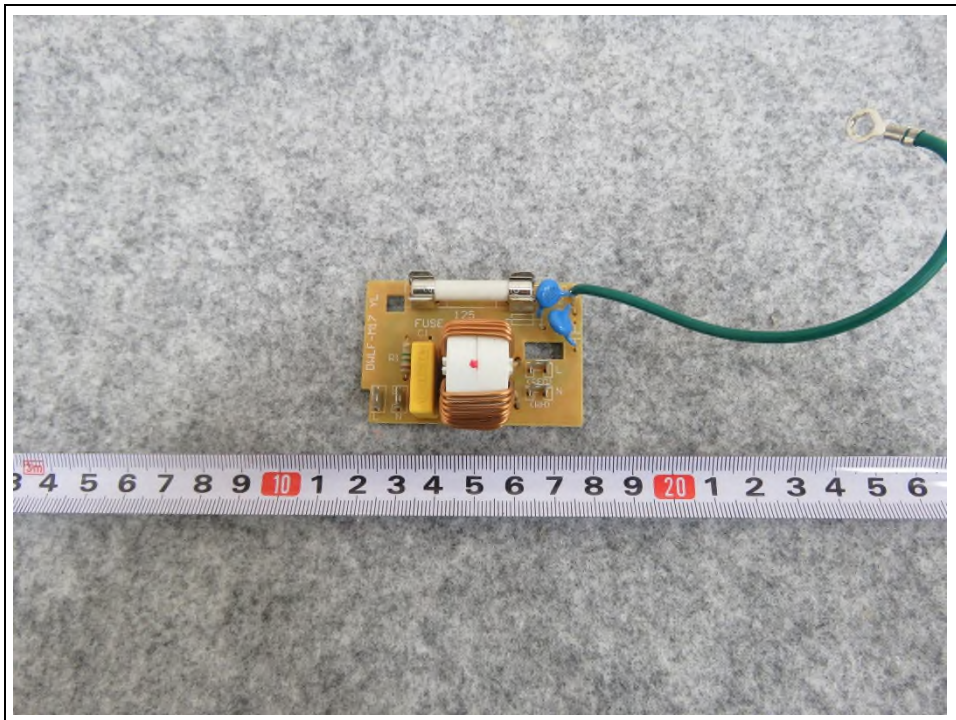
14. Front View of FAN MOTOR



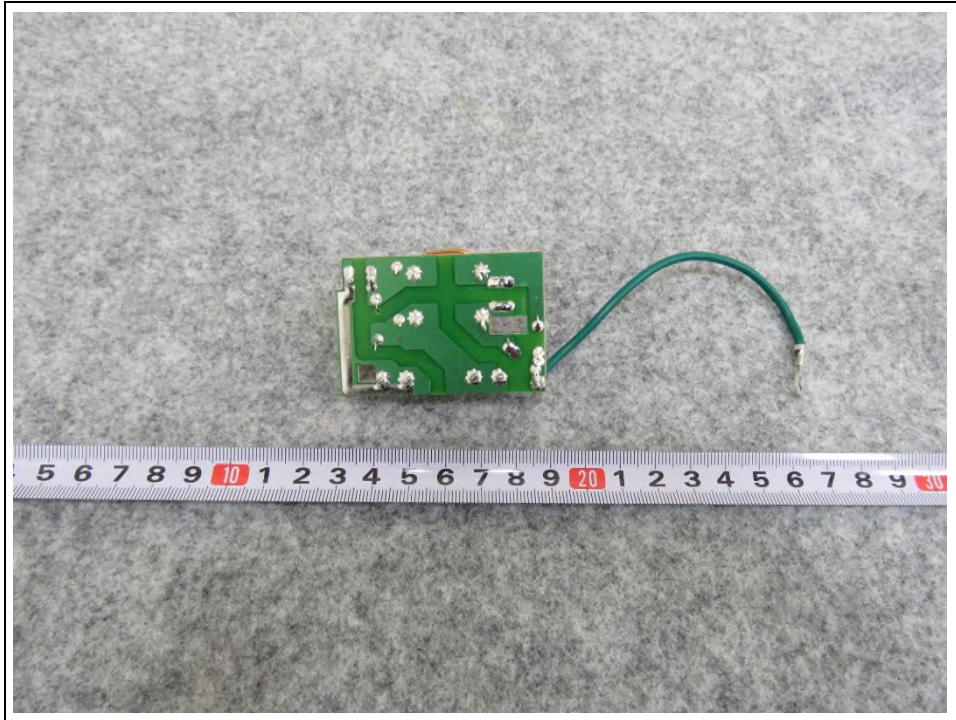
**15. Rear View of FAN MOTOR**



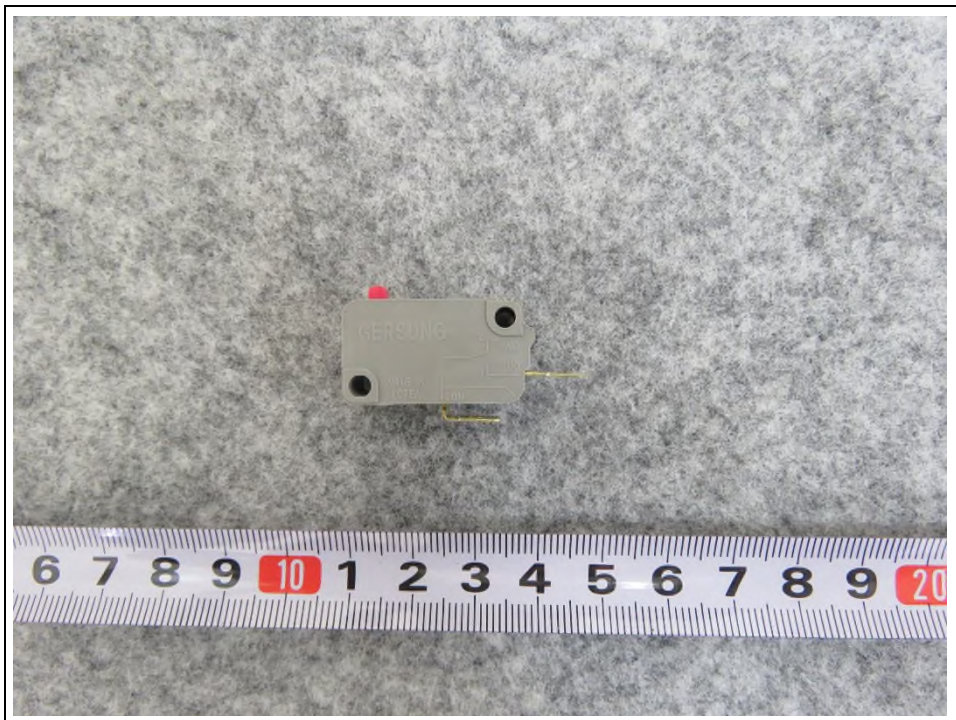
**16. Front View of NOISE FILTER**



**17. Rear View of NOISE FILTER**

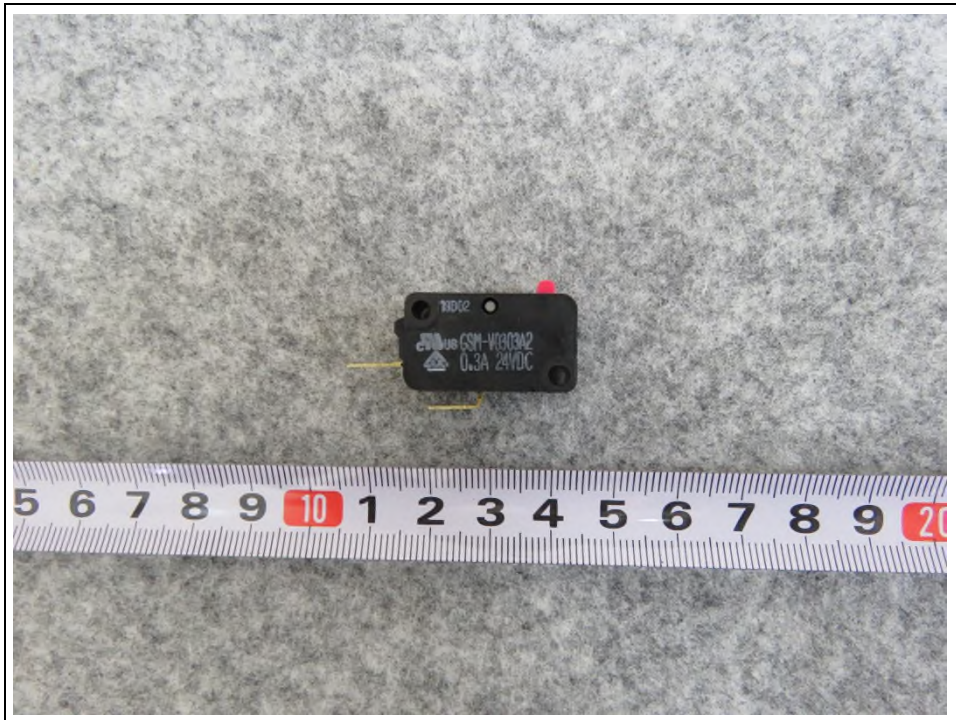


**18. Front View of INTERLOCK SWITCH**

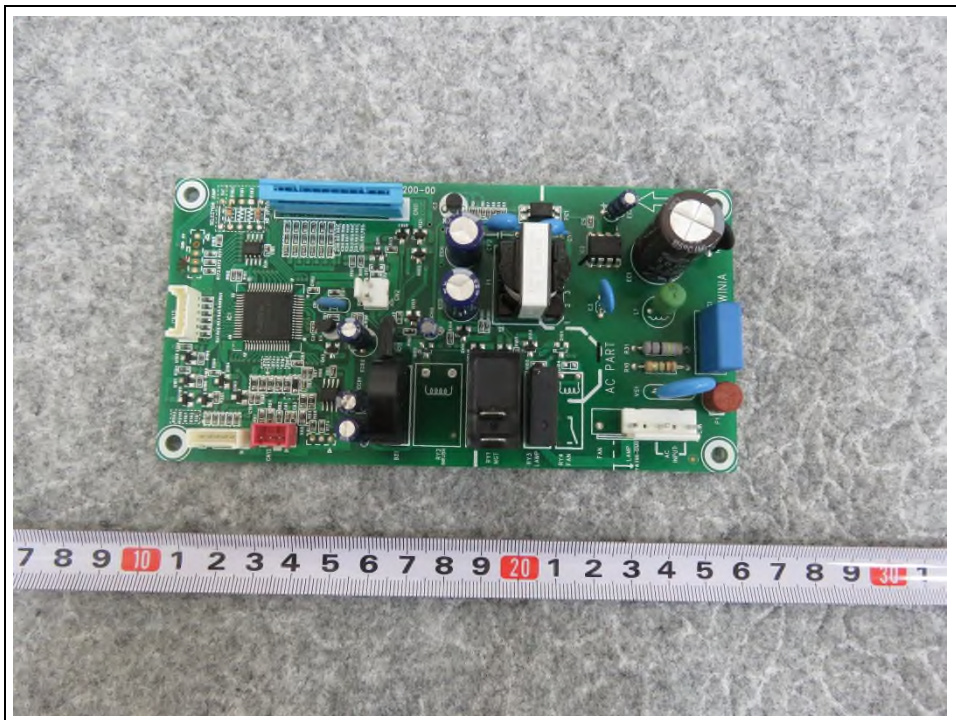




19. Rear View of INTERLOCK SWITCH



20. Front View of Main PCB



### 21. Rear View of Main PCB

