

5. Specification of DAEWOO Magnetron of 2M218

▶ FCC ID : C5F7NF15MO1000 ◀



DAEWOO
DAEWOO ELECTRONICS CO.,LTD.

981-1 JANGDUCK-DONG
KWANGSAN-KU, KWANG JU, KOREA
TEL : 82-062-950-8461
FAX : 82-062-952-2944

MAGNETRON DIVISION

SPECIFICATION

FOR
DAEWOO MAGNETRON
2 M 2 1 8

A handwritten signature in black ink, appearing to read 'Kim T. R.', written over a horizontal line.

TAE-RYONG KIM
GENERAL MANAGER

This specification is based upon EIAJ ED-1501 Testing Methods for Continuous Wave Magnetrons

DAEWOO CONTINUOUS WAVE MAGNETRON 2M218

DESCRIPTION	Magnetron (Fixed Frequency, Integral Magnet)									
FUNCTION	For Microwave Oven (2450MHz Band continuous wave oscillation)									
OUTER DIMENSIONS	See Outline drawing									
ABSOLUTE MAXIMUM RATINGS									NOTE(4)(5)	NOTE(4)
	TERM	Ef	tk	Ebm	Ib	Ibm	Pin	σ_L	Tp	T case
	UNIT	V	sec	kV	mAdc	A	kW	-	°C	°C
	MAX.	3.75	-	4.5	350	1.2	1.4	4	250	100
	MIN.	2.80	0	-	-	-	-	-	-	-
STANDARD TEST CONDITION	NOTE (1)(2)(3)	3.30	-	-	300	-	-	1.1MAX	-	-

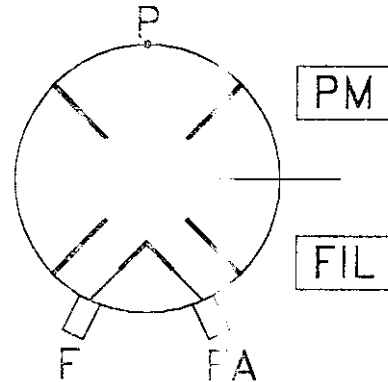
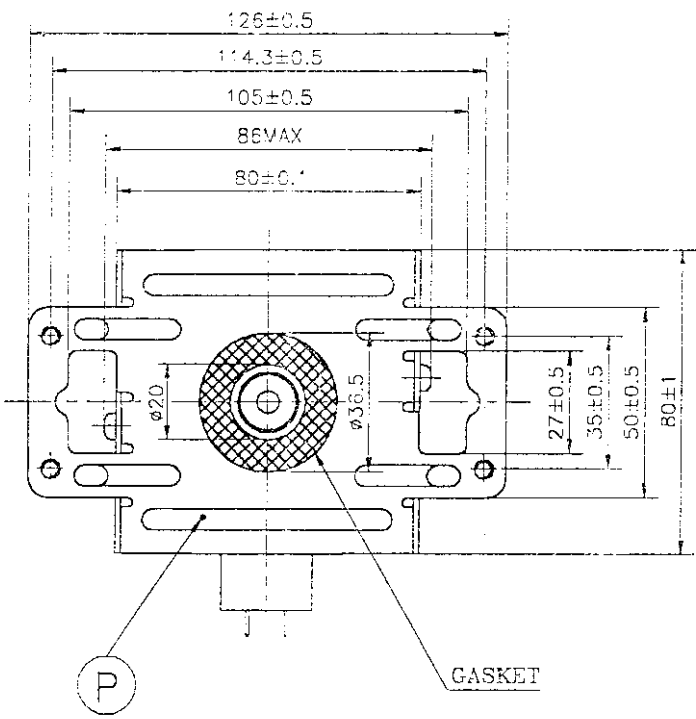
TEST SPECIFICATION

TEST TERM NOTE (8)	TEST METHOD EIAJ ED-1501	TEST CONDITION	SYMBOL	LOGIE	LIMIT		UNIT	
					MIN.	MAX.		
*** VIBRATION	5.4.1		-	-	-	-	-	
** BREAK DOWN VOLTAGE	4.2	NOTE (6)	-	-	-	-	-	
** INSULATION	4.2	Eb=1kVdc R.H. MAX. 60%	-	-	100	-	MΩ	
** FILAMENT CURRENT	4.1.1	tk=120sec	If	10	8	12	A	
PEAK ANODE VOLTAGE	4.3.1	NOTE (7)	Ebm	4.2	4.1	4.3	kV	
AVERAGE POWER OUTPUT(1)	4.3.3.1	NOTE (7)	Po (1)	950	915	980	W	
FREQUENCY	4.3.4	-	f	2458	2448	2468	MHz	
*** PULLING FIGURE	4.3.6	$\sigma_L=1.5$	fpl	-	-	15	MHz	
*** SINK PHASE	4.3.7		λ_{sink}/λ_g	0.25	-	-	-	
** STABILITY MODJG (1)	4.3.11.2	$\sigma_L=2, 3, 4; t=60sec$	-	-	-	-	-	
** FUNDAMENTAL FREQUENCY RADIATION	4.3.15	$\sigma_L=4$	Sl	-	-	1	mW/cm ²	
*** LIFE TEST	4.5.1		t	-	500	-	hour	
*** LIFETEST END POINT	AVERAGE POWER OUTPUT (1)	4.3.3.1	NOTE (7)	Po (1)	-	735	-	W

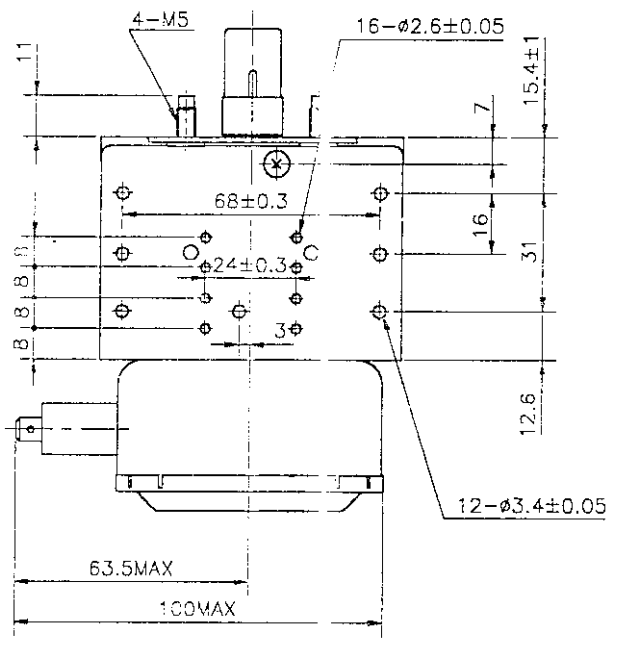
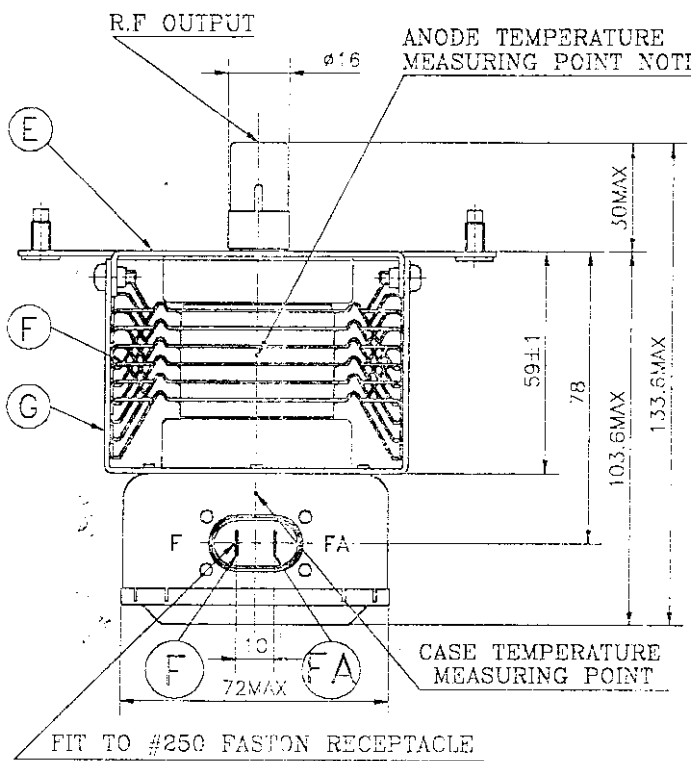
- NOTE (1) Prescribed R.F. Coupler (Refer to the attached chart) or the similar type must be used.
- (2) Forced air cooling (1000 l/min).
- (3) Single phase full wave rectified without filter shall be used for power supply.
- (4) See outline drawing for measuring point.
- (5) Maximum saturated anode temperature for normal condition (with load in the cavity) should be 200°C.
- (6) $E_b=10kVdc$ or $7kVac$: $t=60sec$
- (7) The surrounding temperature will be settled at the value of 25°C and it's exchange rate should be $-0.002/°C$.
- (8) Tests shall be classified as follows.

Class	Mark	Remarks
Production test	None	This test is intended to ensure in the production line is being processed in compliance with the standard, and shall be conducted on some typical characteristics which are considered to be affected by changes in the process.
Design test	**	This test is intended to ensure the standard design, and shall be conducted on such characteristics which are not affected by the ordinary production line as long as the design is maintained.
Type approval test	**>>	This test is intended to ensure the compliance of the standard design with given specifications, and may be omitted unless a substantial change in the design is made.

UNIT: mm

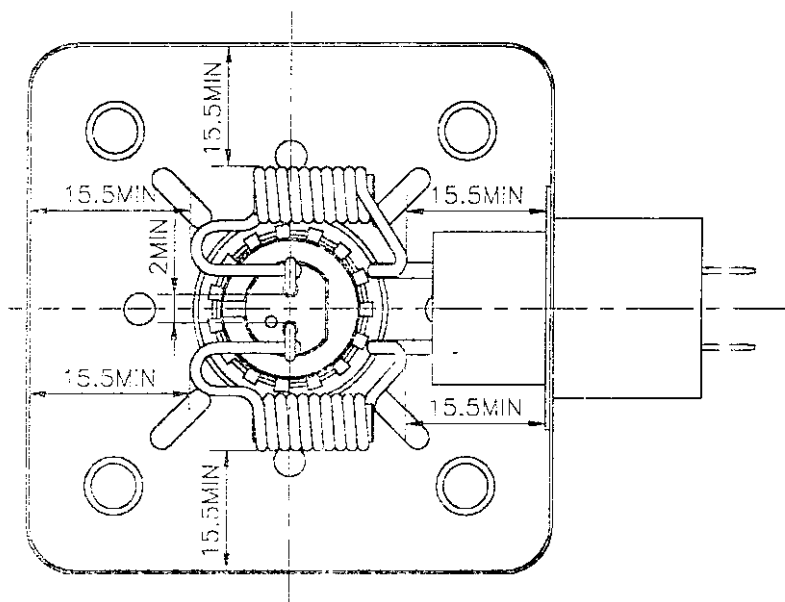
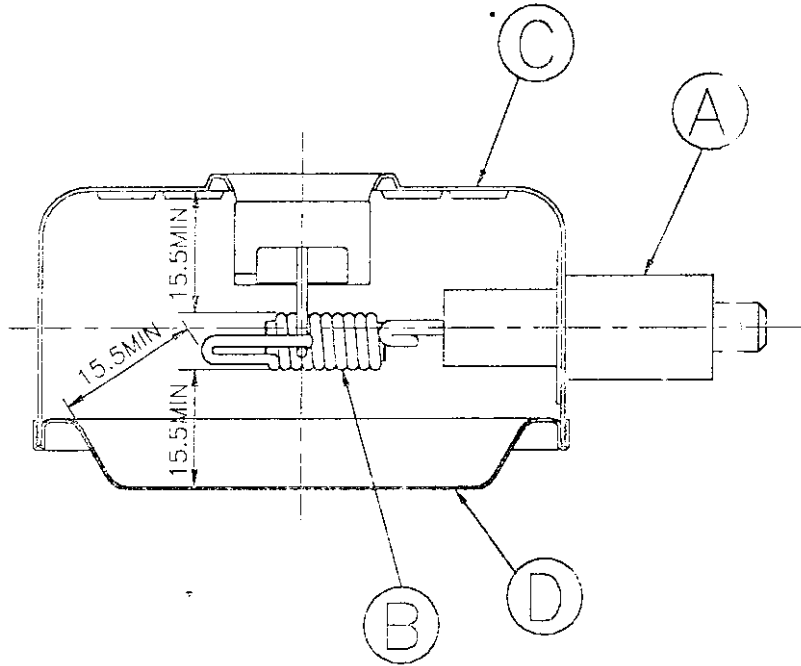


NOTE<1> TEMPERATURE TO BE MEASURED AT THE OUTLET SIDE OF AIRFLOW.



SPACING IN THE SHIELDING CASE

UNIT: mm

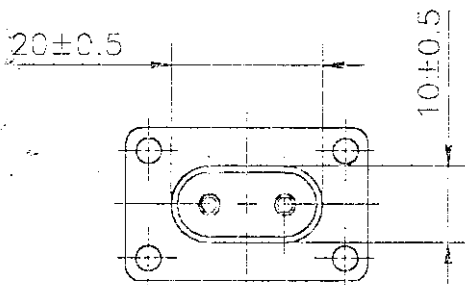
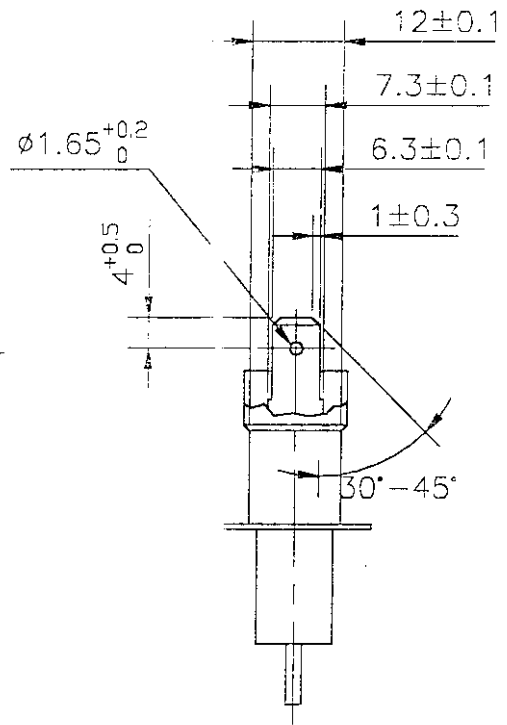
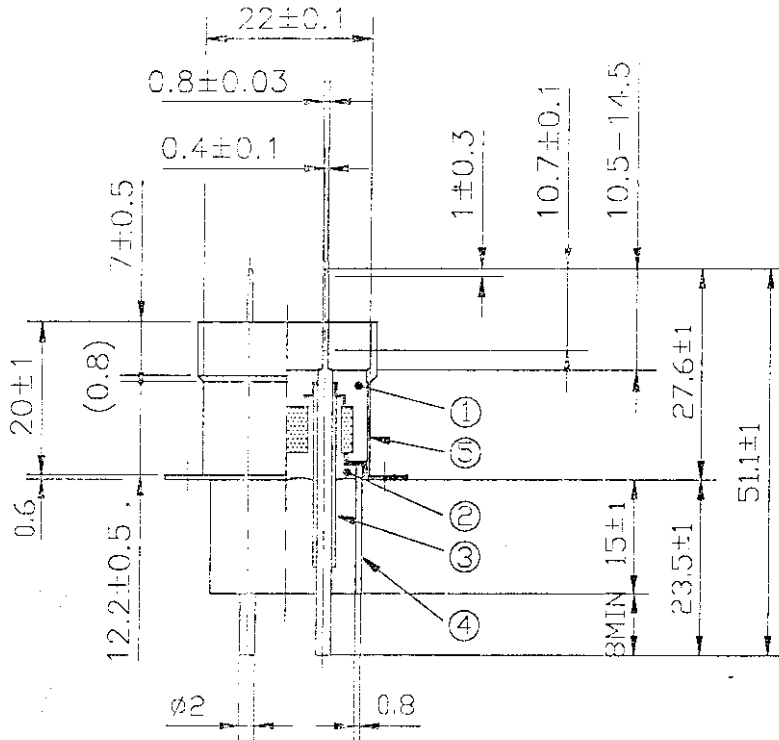
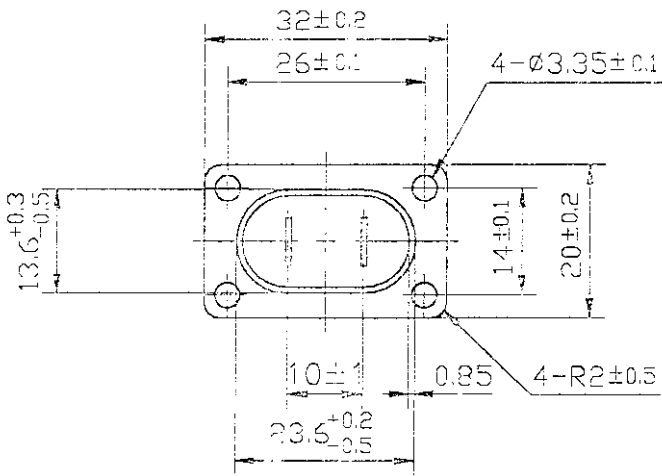


SPEC.NO.:

DATE:

PAGE: 5/10

UNIT : mm



NOTE<1> THE FASTON TAB MEETS TO BS 5057: 1973 AND DIN 43244; APRIL 1980.

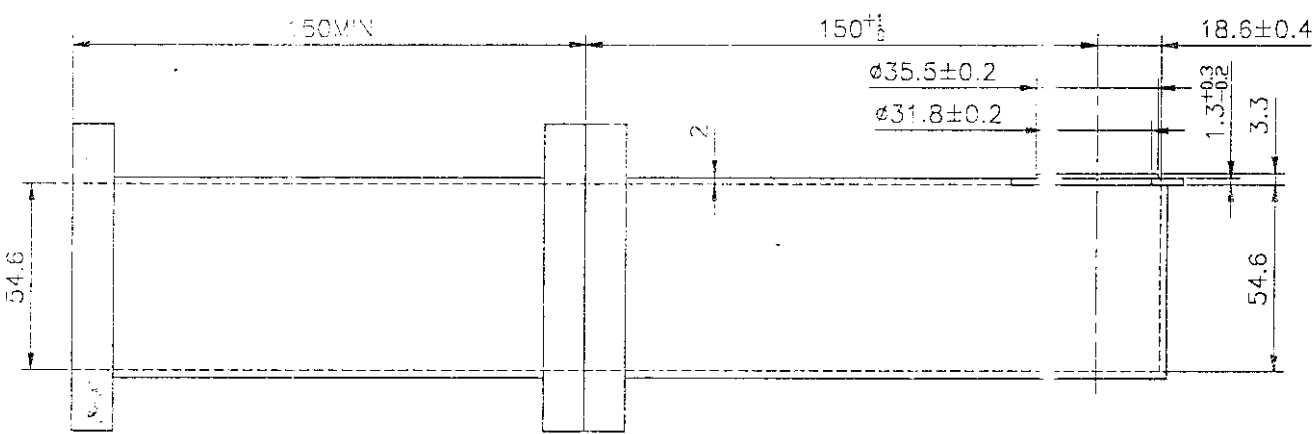
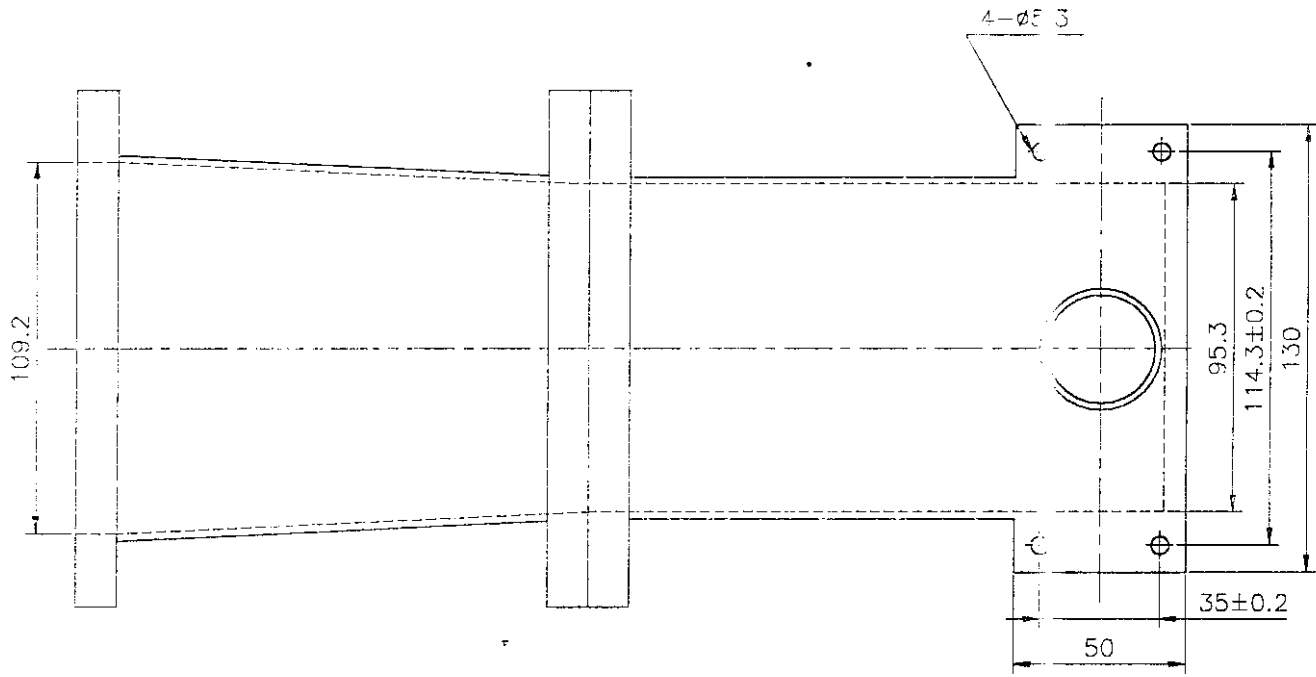
MATERIAL LIST

PART NAME	MANUFACTURER	MATERIAL	MANUFACTURER of MATERIALS	UL - No.			NOTE
				Guide No.	File No.	Grade No.	
A Capacitor (HFC-2L-3)	T D K Corporation	1 Epoxy Resin	TDK Corporation	-	-	R-2	500pFx2 VV10KVDC No.6
		2 Epoxy Resin	TDK Corporation	-	-	R-3	
		3 Silicon	1)Shin_etsu Chemical Co.,LTD. 2)Toshiba Silicon Co.,LTD.			1)5609 or 5620 2)2502	
		4 Polyethiene Terephthalate	Teijin LTD.	QMFZ2	E52857	CN9015	
		5 Polyethiene Terephthalate	Mitsubishi rayon Co.,LTD.	QMFZ2	E54695	PBTG2930	

PART NAME	MANUFACTURER	MATERIAL	THICKNESS or DIAMETER(mm)	SIZE (mm)	NOTE
B Choke coil	Sunjin Industrial Co.,LTD	Ferrite	-	φ5 x 6	9.5 turns 1.5 μH x 2
	Sangshin Electronics Co.,LTD.	Enameled copper wire	φ 1.4		
C Shielding case	Daewoo Electronics Co.,LTD.	Zinc steel	T 0.4	70 x 30	
D Shielding case cover	do	do	T 0.4	71 x 31	
E Heat sink enclosure (1)	do	do	T 1.6	-	
F Heat sink	do	Aluminium	T 0.7	80 x 30	6 fins
G Heat sink enclosure (2)	do	Zinc steel	T 1.4	-	

R. F. COUPLER

UNIT: mm



STANDARD R.F. COUPLER DEFINED BY E.I.A.J.

SPEC.NO.:

DATE:

PAGE: 9/10

LABEL

LABEL

The Label as shown below shall be put on each tube.

