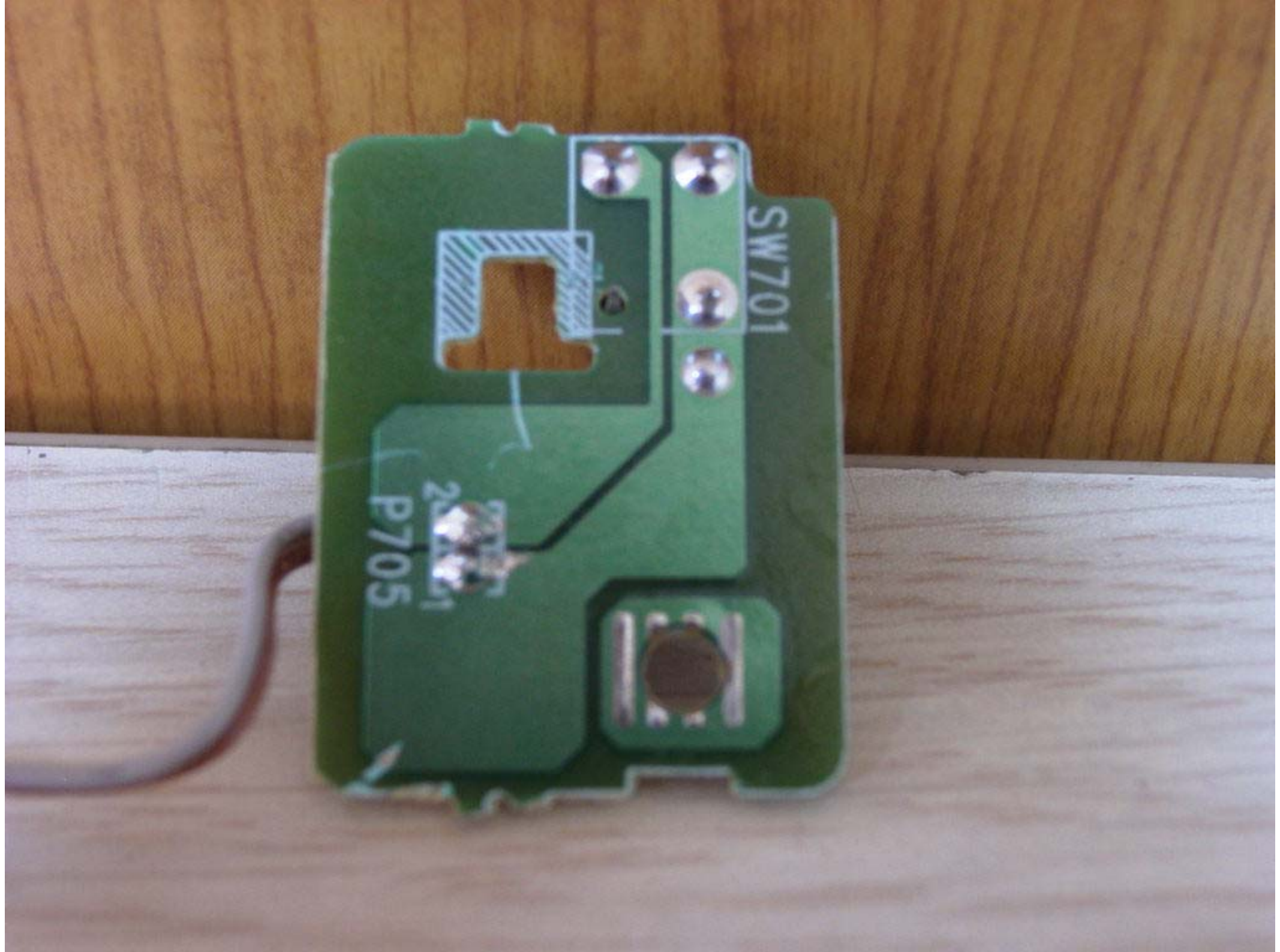


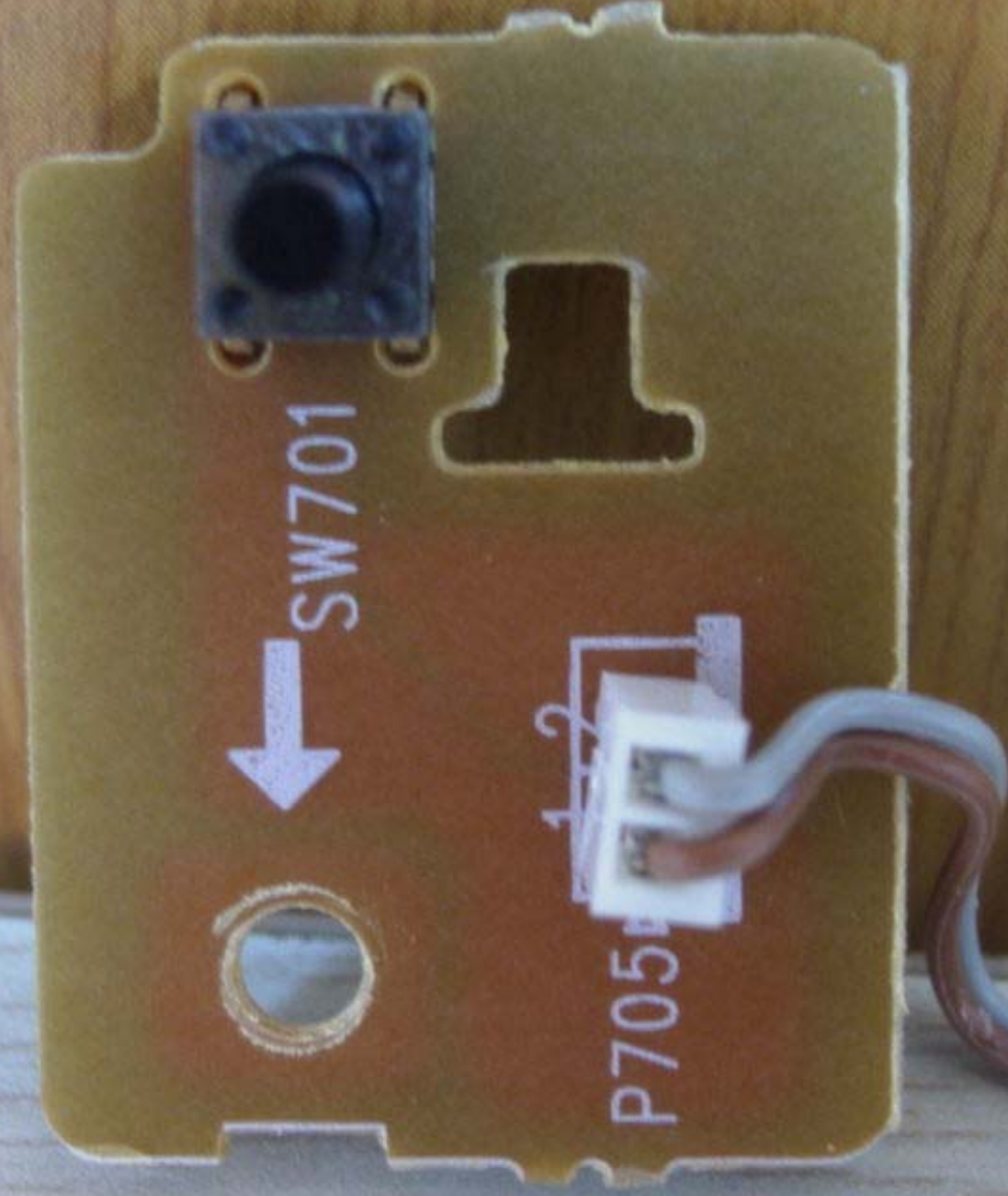




MODEL : DW-07302N-ES G701  
S/N : 07R654791A (MP)



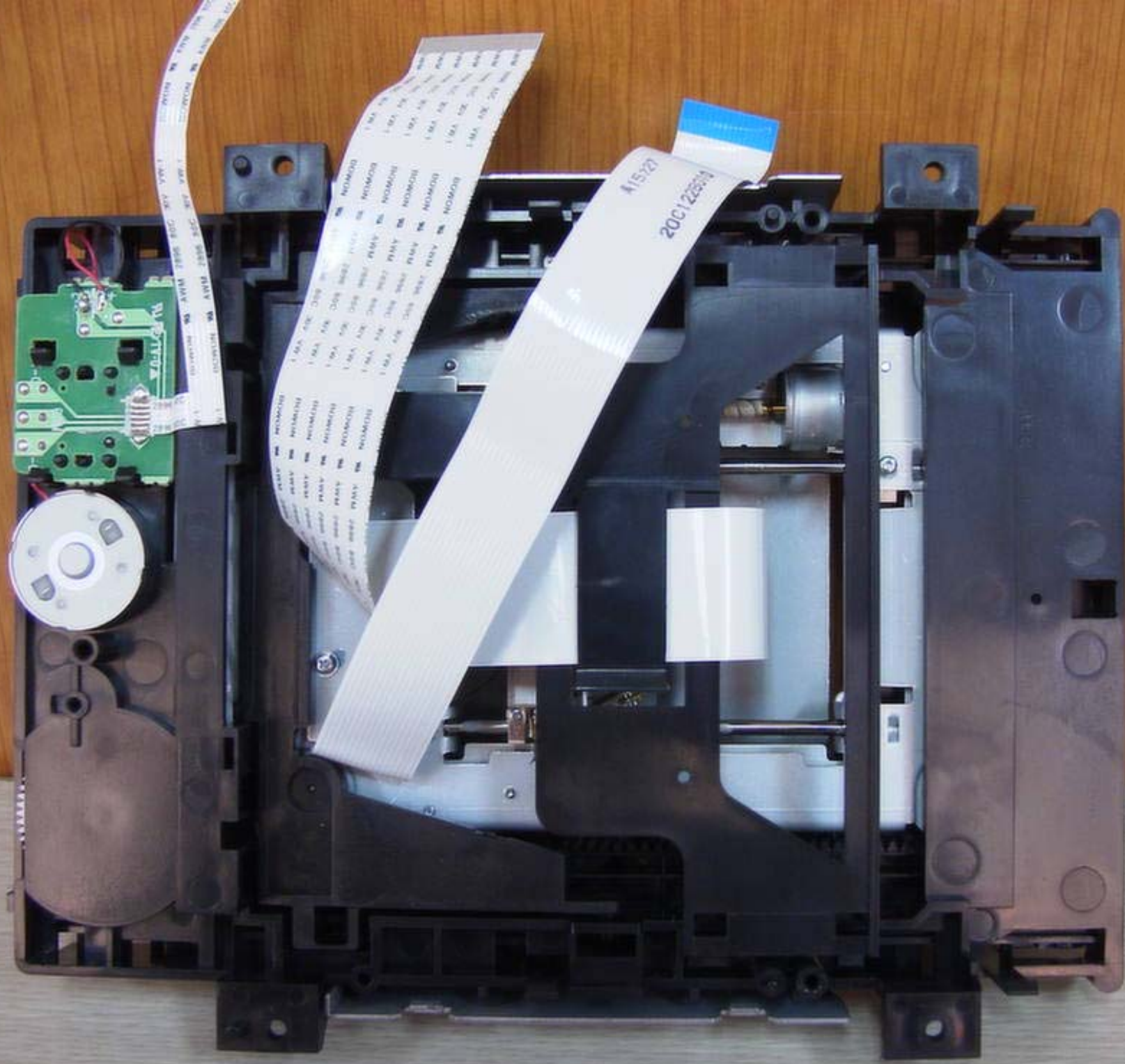




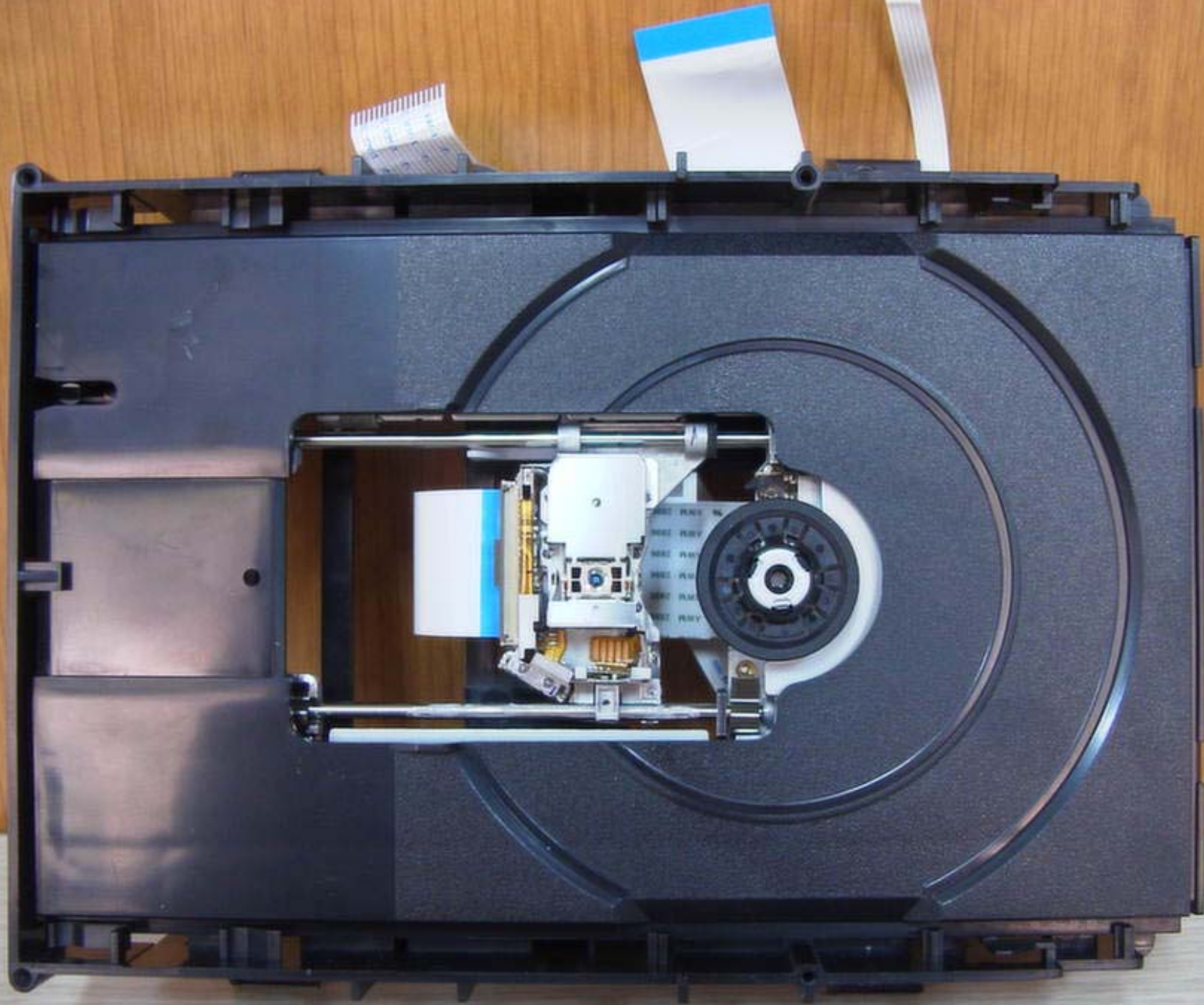




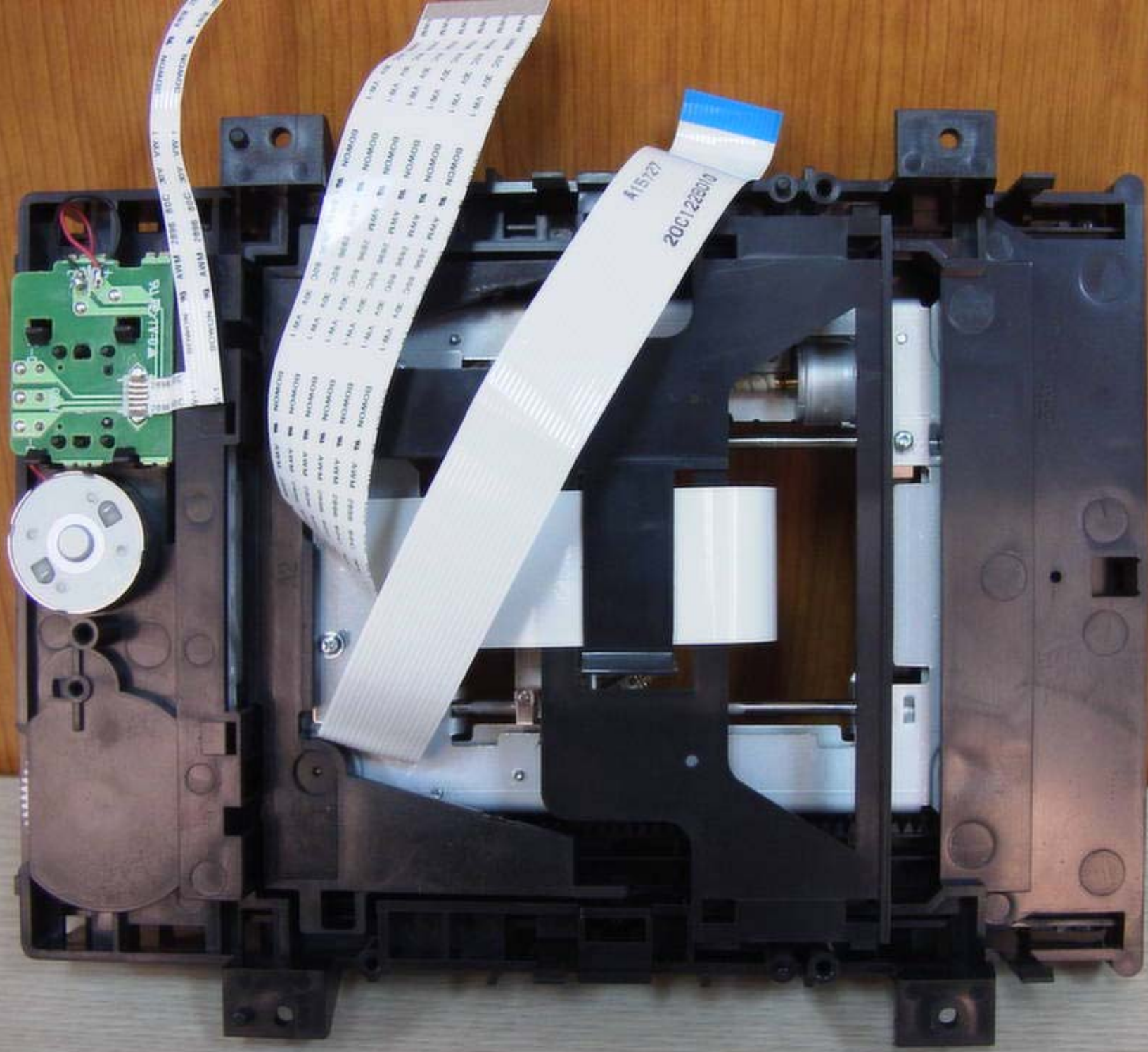












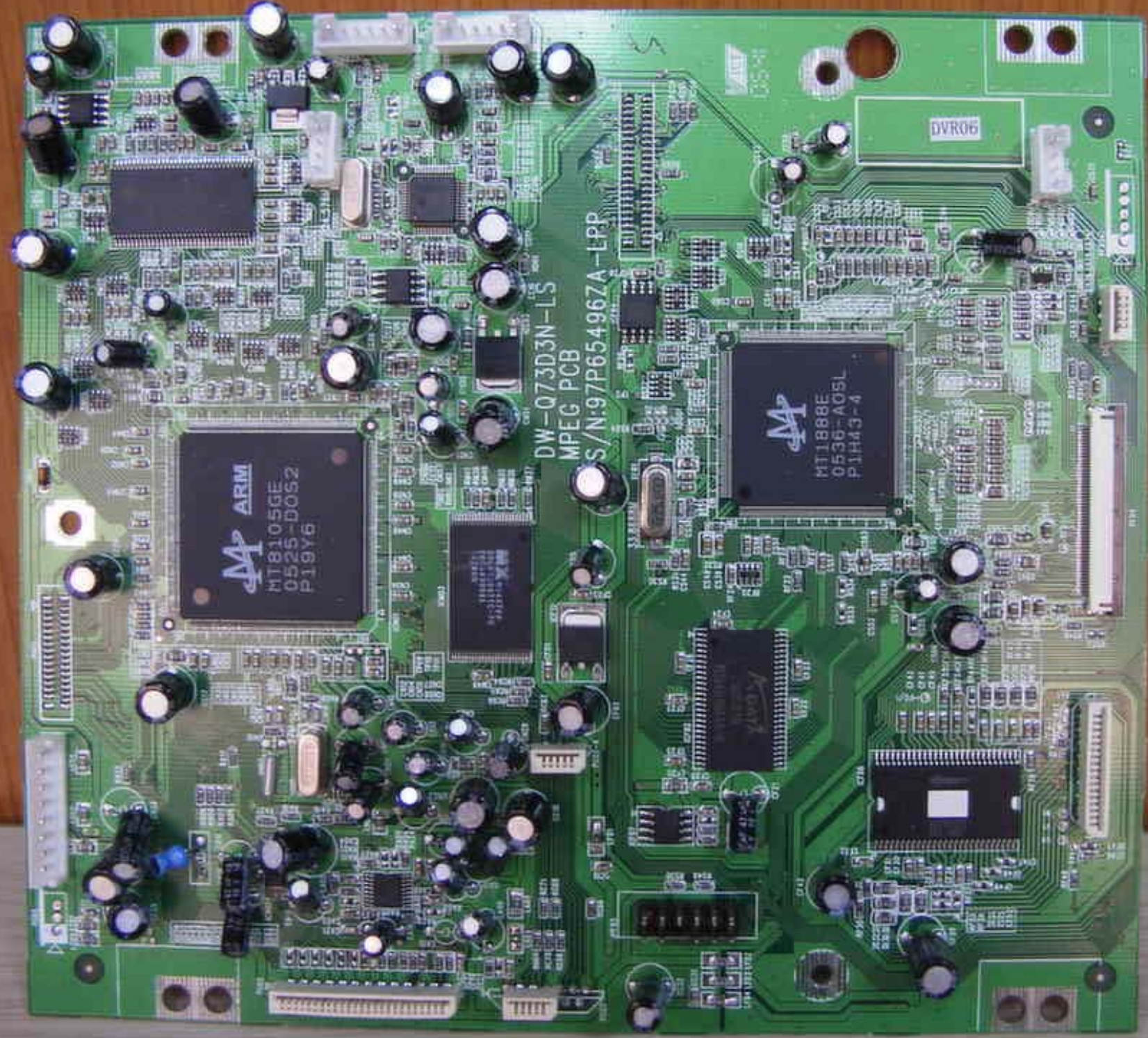












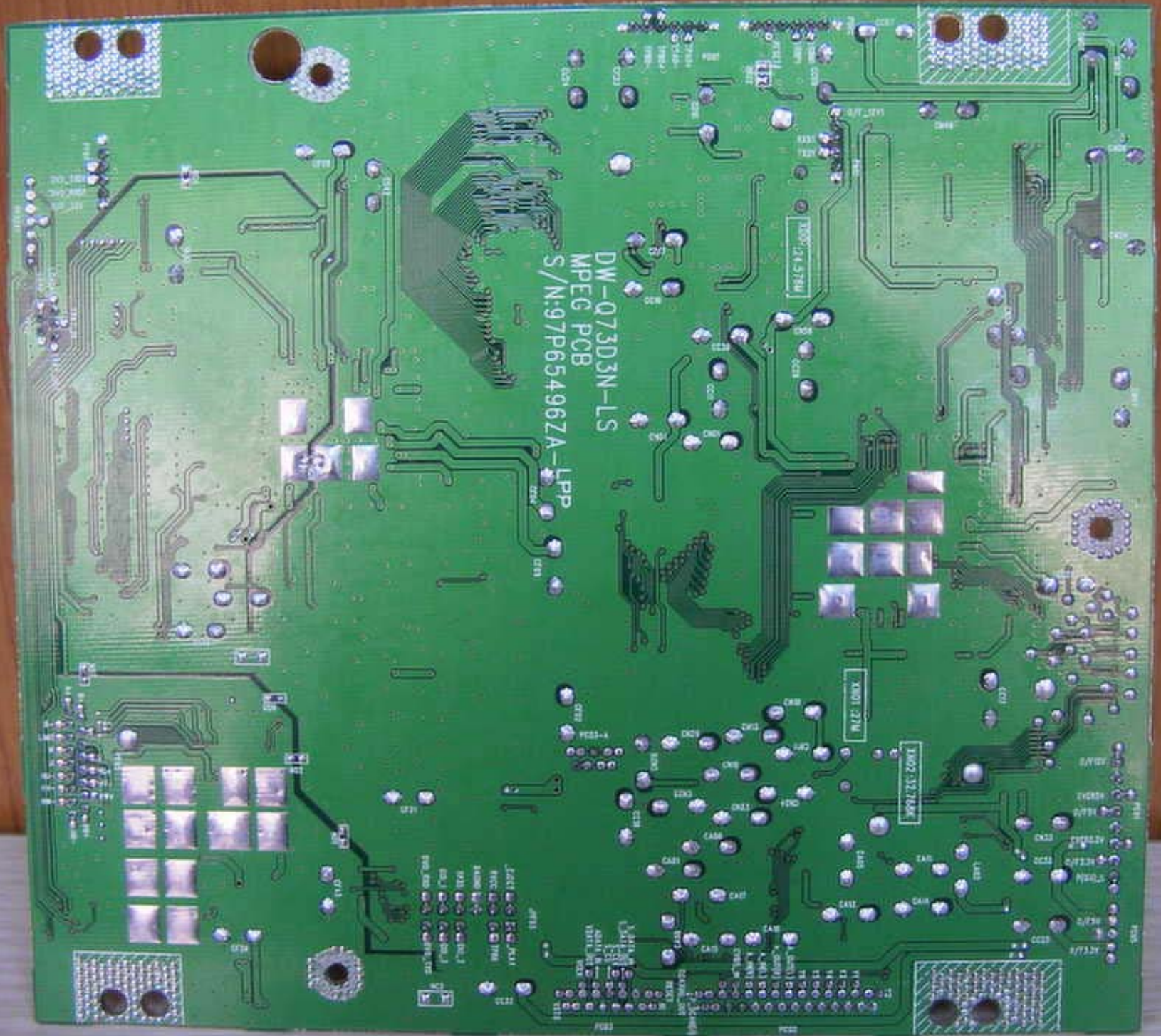
ARM  
MT8105GE  
0525-D052  
P19Y6

DW-073D3N-LS  
MPEG PCB  
S/N:97P654967A-LPP

MT1888E  
0536-A05L  
P1H43-4

DVR06





DW-073D3N-LS  
MPEG PCB  
S/N:97P65496ZA-LPP



Lot# 0001  
Rev# 001  
Date 01/01/01  
S/N: 97P65496ZA-LPP

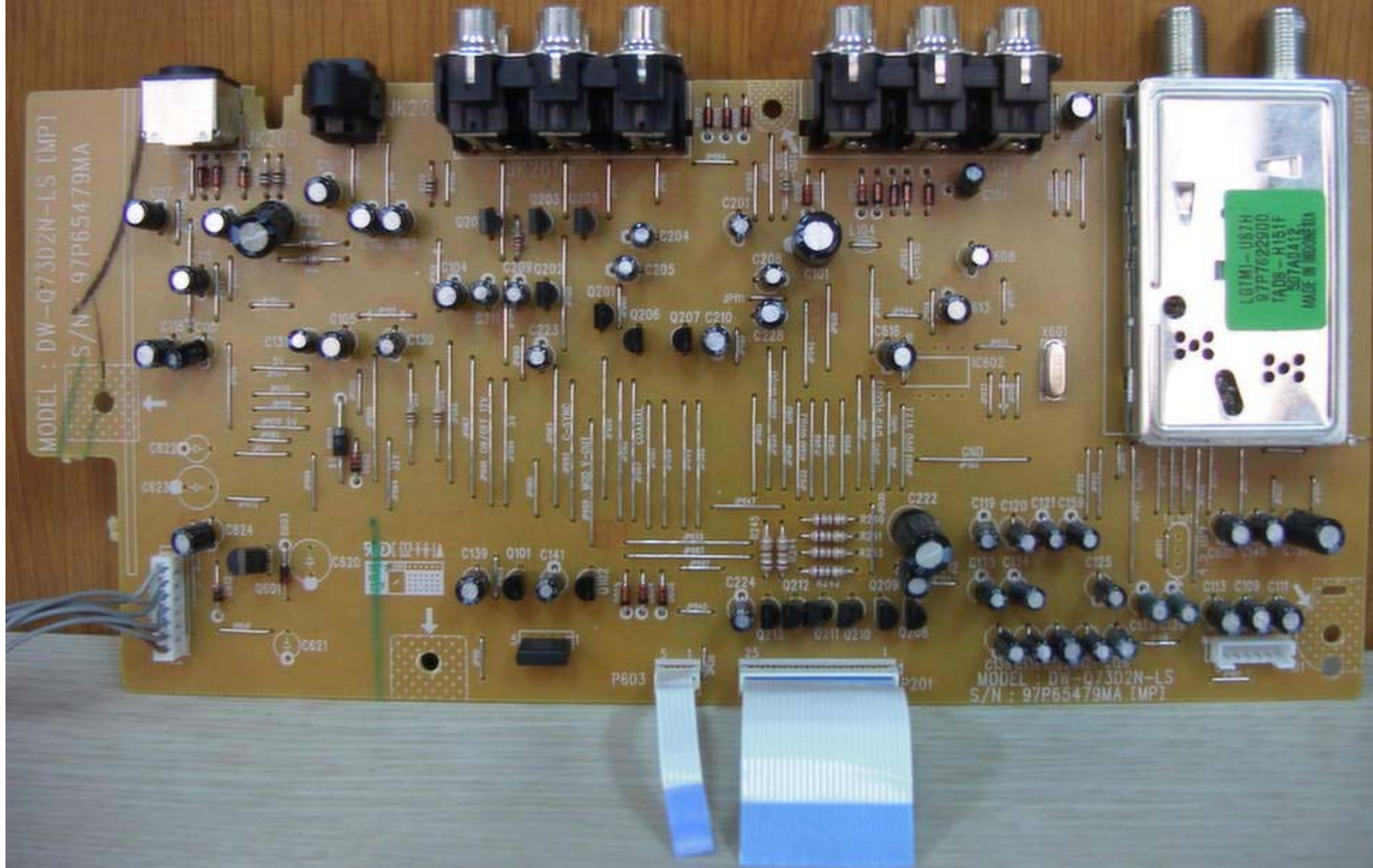
3X01-27M

3X02-127M

11-1  
11-2  
11-3  
11-4  
11-5  
11-6  
11-7  
11-8  
11-9  
11-10  
11-11  
11-12  
11-13  
11-14  
11-15  
11-16  
11-17  
11-18  
11-19  
11-20  
11-21  
11-22  
11-23  
11-24  
11-25  
11-26  
11-27  
11-28  
11-29  
11-30  
11-31  
11-32  
11-33  
11-34  
11-35  
11-36  
11-37  
11-38  
11-39  
11-40  
11-41  
11-42  
11-43  
11-44  
11-45  
11-46  
11-47  
11-48  
11-49  
11-50



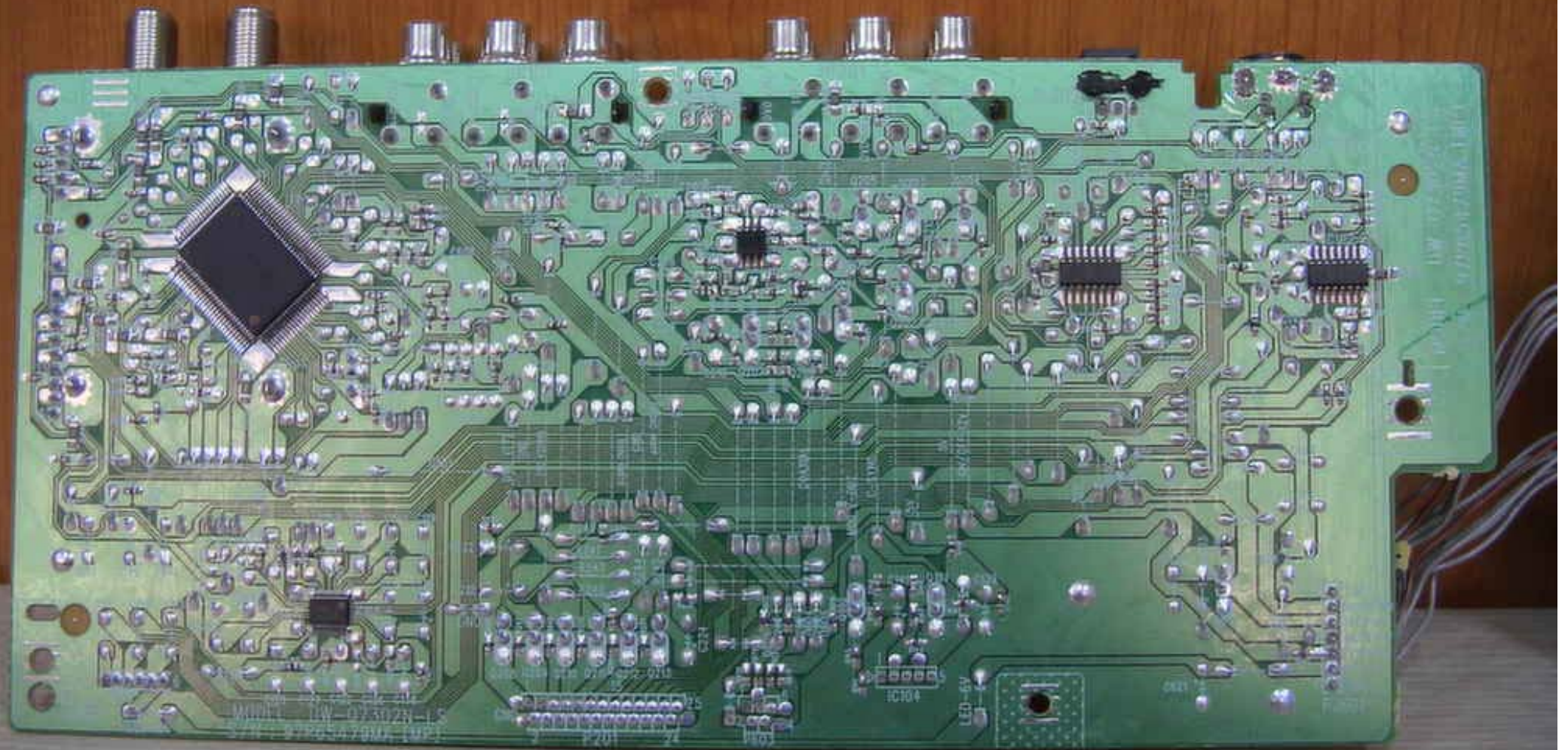
MODEL : DW-Q7302N-LS [MP]  
S/N : 97P65479MA



MODEL : DW-Q7302N-LS  
S/N : 97P65479MA [MP]

LGTMI-087H  
97P7622900  
TA08-H151F  
SOTADAT2  
MADE IN HONGKONG







ICW 2W 2.2 Ohm  
T2AL/AC250V



MEM. IN FUSIBLE OE  
TYPE 2A 250V

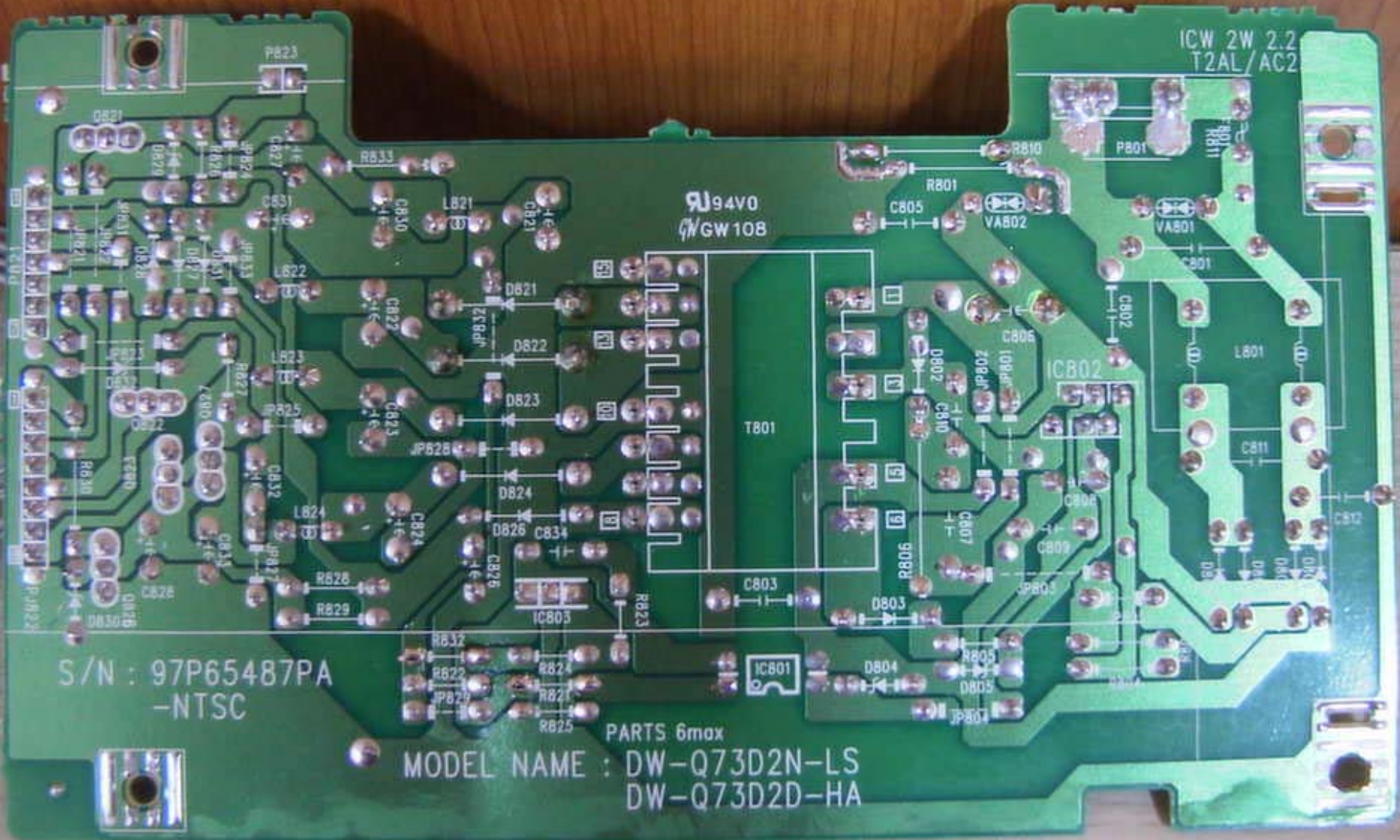
CAUTION: FOR CONTINUED PROTECTION  
AGAINST RISK OF FIRE REPLACE ONLY  
WITH SAME TYPE 2A 250V FUSE

MODEL NAME : DW-Q73D2N-LS  
DW-Q73D2D-HA

S/N : 97P65487PA  
-NTSC

LEAD HOLE





94V0  
GW/GW 108

ICW 2W 2.2  
T2AL/AC2

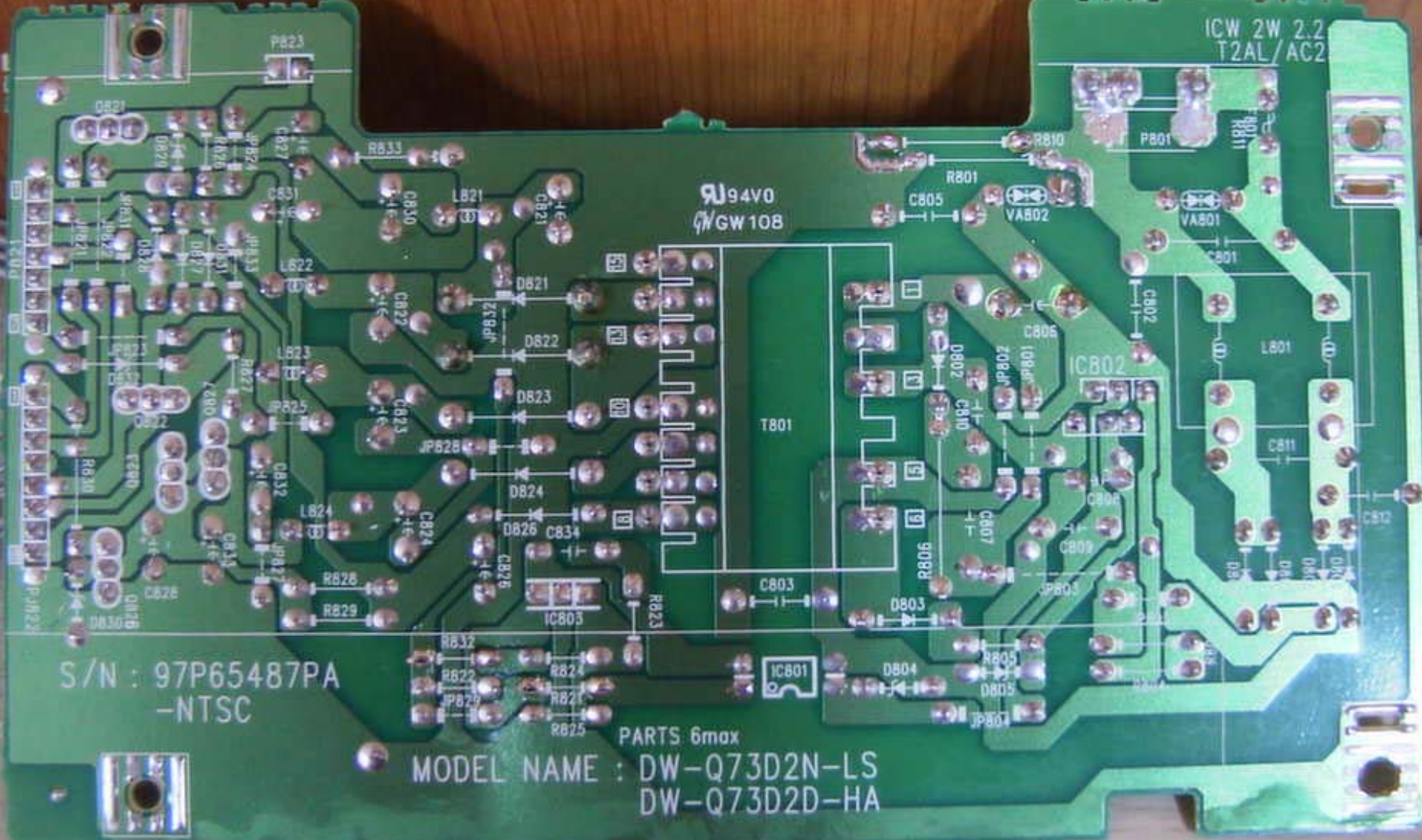
S/N : 97P65487PA  
-NTSC

PARTS 6max  
MODEL NAME : DW-Q73D2N-LS  
DW-Q73D2D-HA

T801

IC802

IC801















LGTMI - US7H  
97P7622900  
TADS - H151F  
507A0412.  
MADE IN INDONESIA



