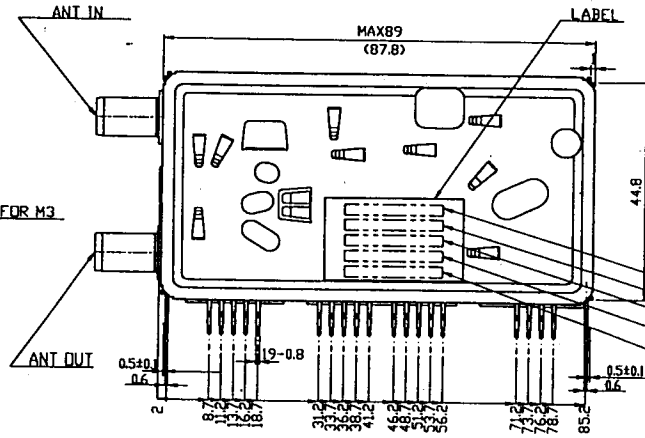
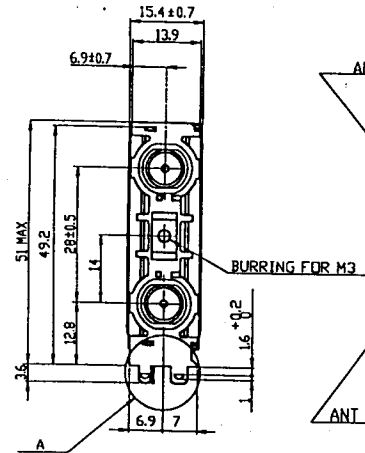
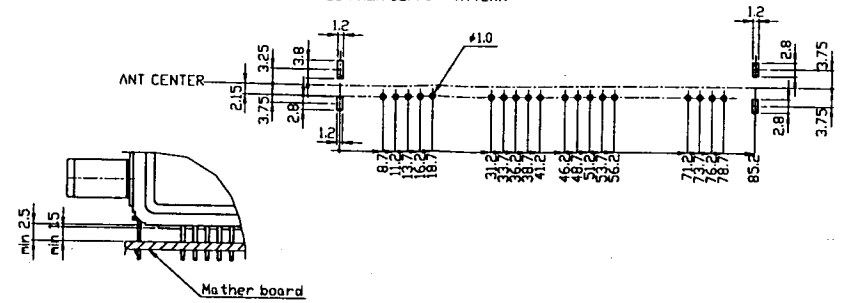


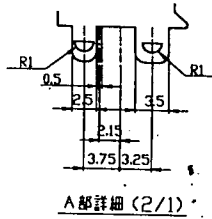
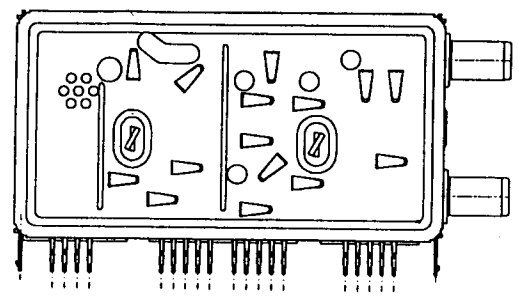
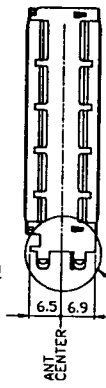
DAEWOO ELECTRONIC COMPONENT CO.		PREPARE	CHECK	APPROVE
DTMI-5NF02 CIRCUIT DIAGRAM				
Rev	01	Drawn	02	
Part	0203	Checked		
Doc. No.	0203	Rev.	02	

DATE	RECORD OF REVISIONS

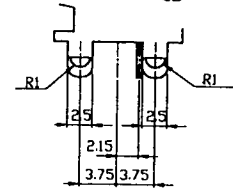
DIMENSION OF P.C.B. FOR 3in1 MOUNTING (REFERENCE ONLY)
VIEWED FROM COPPER PATTERN



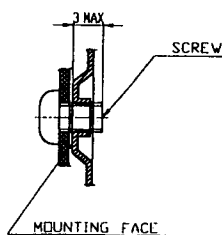
CUST. MODEL NO.
CUST. PART NO.
NJRC MODEL NO.
LOT NO.
THE COUNTRY OF ORIGIN



A部詳細 (2/1)



B部詳細 (2/1)



- NOTE 1. TOLERANCES ARE ±0.5.
UNLESS OTHERWISE SPECIFIED.
- DATA CODE NO. SHALL BE CONFORMED TO NJRC STANDARD SPECIFICATION.
 - THE PITCH BETWEEN TERMINALS IS SPECIFIED AT THE FOOT.
 - SCREW LENGTH FROM MOUNTING FACE IS 4mm MAX.
 - SHOULD NOT CONNECT TP TERMINAL.
 - SHOULD USE TAPTITE (STITE) SCREWS BY SUITABLE WHEN USE SCREWS FOR MOUNTING.

(NOTE) Specifications subject to change without notice

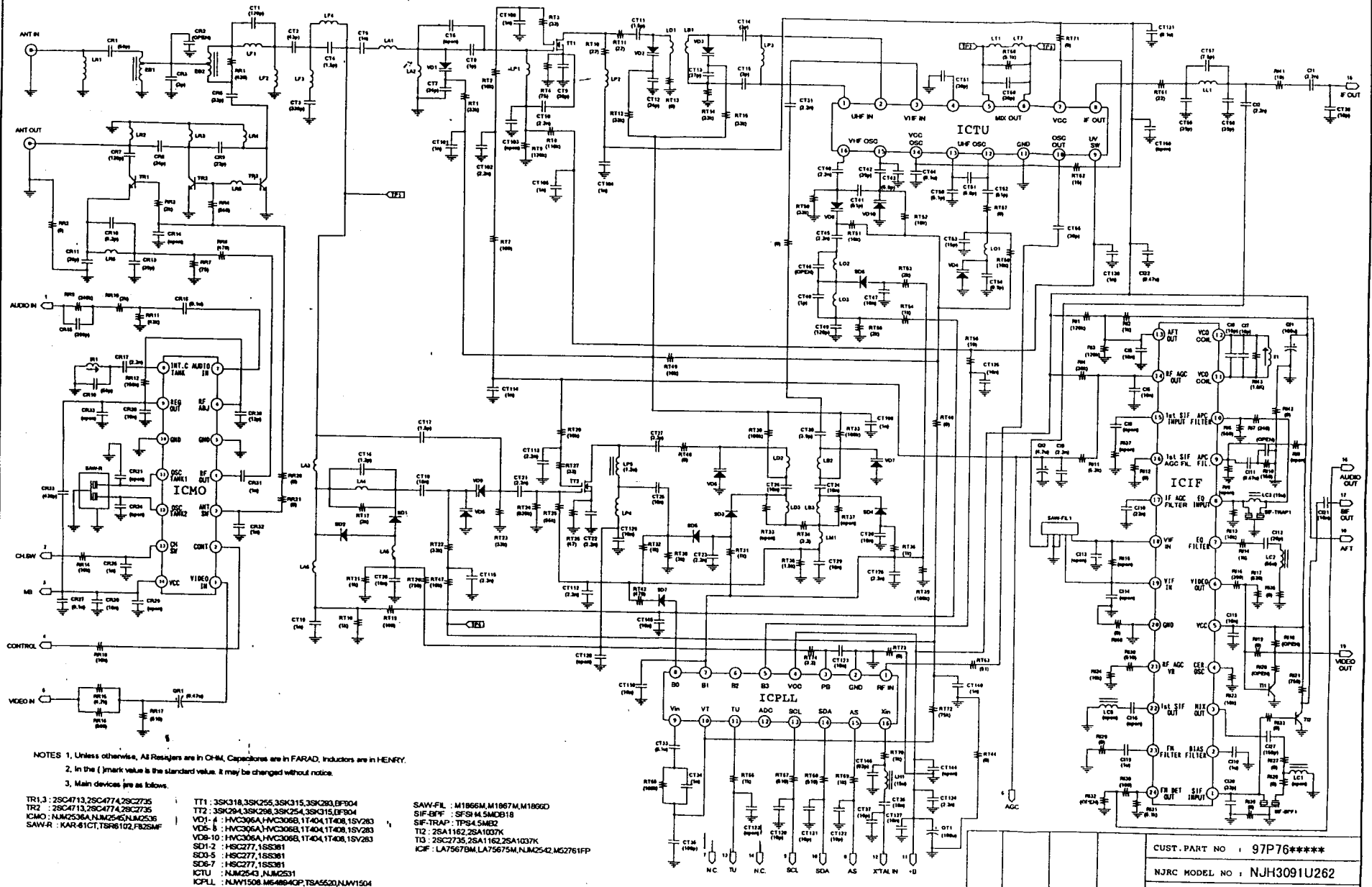
CUST. PART NO : 97P76 *****

TERMINAL NO.	1	2	3	4	5	6	7	8	9	10
TERMINAL NAME	AUDIO IN	CH.SW	MR(S)	CONTROL	VIDEO IN	AGC	NC	AS	SCL	SDA
TERMINAL NO.	11	12	13	14	15	16	17	18	19	
TERMINAL NAME	+B(SV)	X'tal In	TU	NC	F OUT	AUDIO OUT	SIF OUT	AFT	VIDEO OUT	

New Japan Radio Co.,Ltd

DSCD.
Jul 22 '99 T. Fujita
CHKD.
Jul 22 '99 A. Ando
APPD.
Jul 22 '99 T. Seida

NJRC MODEL NO : NJH3091U262
TITLE US181CH 3in1 DIMENSIONS



NOTES 1. Unless otherwise, All Resistors are in OHM, Capacitors are in FARAD, Inductors are in HENRY.
 2. In the () mark value is the standard value. It may be changed without notice.
 3. Main devices are as follows.

- | | | |
|-----------------------------------|---|---|
| TR1,3 : 2SC4713, 2SC4774, 2SC2735 | TT1 : 3SK318, 3SK255, 3SK315, 3SK283, 8F904 | SAW-FIL : M1865M, M1067M, M1860D |
| TR2 : 2SC4713, 2SC4774, 2SC2735 | TT2 : 3SK294, 3SK298, 3SK254, 3SK315, 8F904 | SIF-BPF : SFS14, 5MD618 |
| ICMO : NJM236A, NJM254, NJM256 | VD1-4 : HVC306A, HVC306B, 1T404, 1T408, 15V283 | SIF-TRAP : TPS4, 5MB2 |
| ICFU : NJM236A, NJM254, NJM256 | VD5-8 : HVC306A, HVC306B, 1T404, 1T408, 15V283 | TI2 : 2SA1162, 2SA1007K |
| SAW-R : KAR-61CT, T3R6102, F3Z5MF | VD9-10 : HVC306A, HVC306B, 1T404, 1T408, 15V283 | TD : 2SC2735, 2SA1162, 2SA1007K |
| | SD1-2 : HSC277, 15S381 | ICF : LA75678M, LA75675M, NJM254Z, M52761FP |
| | SD3-5 : HSC277, 15S381 | |
| | SD6-7 : HSC277, 15S381 | |
| | ICLU : NJM254Z, NJM2531 | |
| | ICPLL : NJM1508, M54894QP, TSA5520, NJM15104 | |

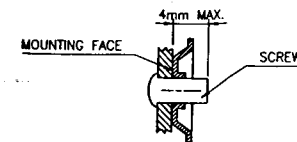
性能改善の為に、配線図の変更の可能性があります。
 It has the possibility of circuit diagram change for performance improvement.

CUST. PART NO : 97P76*****	
NJRC MODEL NO : NJH3091U262	
New Japan Radio Co., Ltd.	
TITLE	US181CH
CIRCUIT DIAGRAM	
APPD. 3x.22.99	DSGD.
T. Saida	A. Aoda

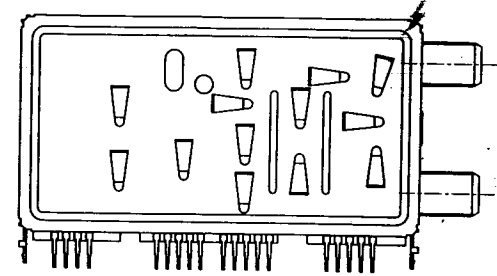
SYMB	DATE	APPD	DSGD
------	------	------	------

TERMINAL No.	1	2	3	4	5	6	7	8	9	10	11	12	13	14	15	16	17	18	19	20
TERMINAL NAME	AUDIO IN	CH SW	MB	CONTROL	VIDEO IN	RF AGC	N.C	AS	SCL	SDA	N.C	+B	X-Tal	TU	N.C	IF OUT	AUDIO OUT	SIF	AFT	VIDEO OUT

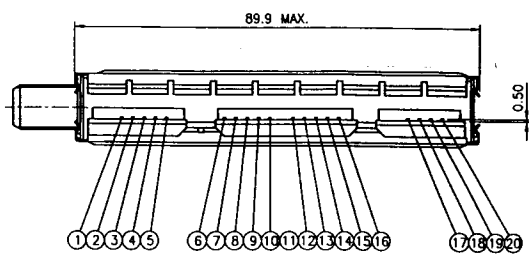
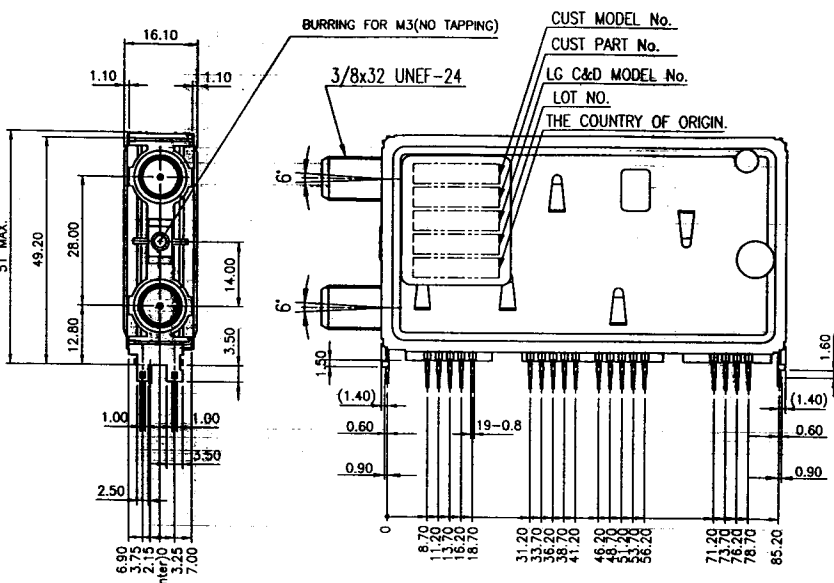
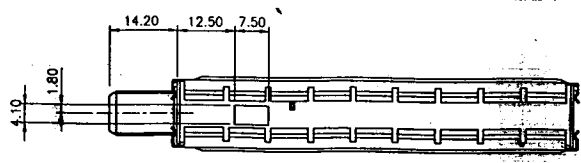
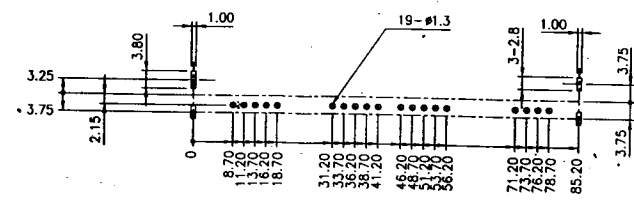
- NOTE
1. TOLERANCES ARE ± 0.5 UNLESS OTHERWISE SPECIFIED.
 2. LOT NO. SHALL BE CONFORMED TO LGEC STANDARD SPECIFICATION.
 3. THE PITCH BETWEEN TERMINAL IS SPECIFIED AT THE FOOT.
 4. THE LENGTH OF SCREW FROM MOUNTING FACE IS 4mm MAX.



5. MATERIAL OF CHASSIS AND COVER IS TIN PLATE.
6. AS LONG AS THE OUTER APPEARANCE DOESN'T AFFECT THE PERFORMANCE OF THE PRODUCT, IT CAN BE CHANGED WITHOUT PRIOR NOTICE.



7. DIMENSION OF P.C.B FOR 3 IN 1, MD MOUNTING.(REFERENCE ONLY)
(VIEWED FROM COPPER PATTERN)



PART NO.	NAME	MATERIAL	SPEC.	FINISH
			UNIT mm	TADC-H101F
		APPD. CHKD. DSCD.	SCALE 1:1	TITLE OUTLINE DRAWING
			DRAW	DOCUMENT NO. TE30---
ZONE	SYMB	DATE OR NO.	APPD	CHKD
			DSCD	