

6.0 PHOTOS OF EUT



FIGURE 3: Top of Mouse



FIGURE 4: Bottom of Mouse



FIGURE 7: Mouse End



FIGURE 8: Mouse Inside Battery Cover And Screw



FIGURE 9: Mouse Inside Top Bevel



FIGURE 10: Mouse Inside Top



FIGURE 11: Mouse Outside Battery Cover And Screw



FIGURE 12: Mouse Side



FIGURE 13: Mouse Top

7.0 PHOTOS OF SUPPORT EQUIPMENT FOR THE EUT



FIGURE 14: PS2-Serial Adapter Bottom



FIGURE 15: PS2-Serial Adapter PS2 Plug



FIGURE 16: PS2-Serial Adapter Serial Plug



FIGURE 17: PS2-Serial Adapter Top

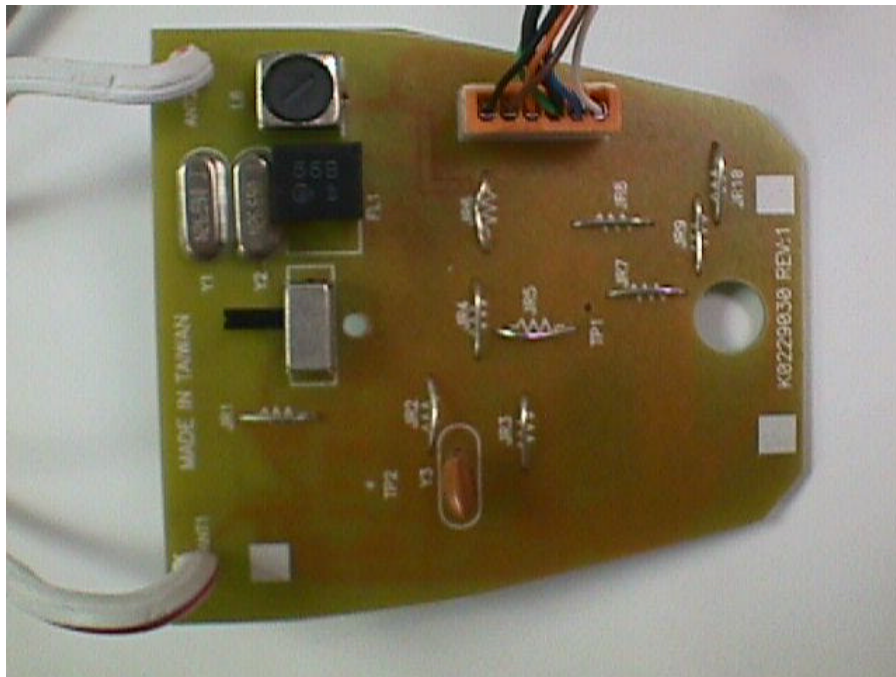


FIGURE 18: Receiver Bottom PCB



FIGURE 19: Receiver Bottom

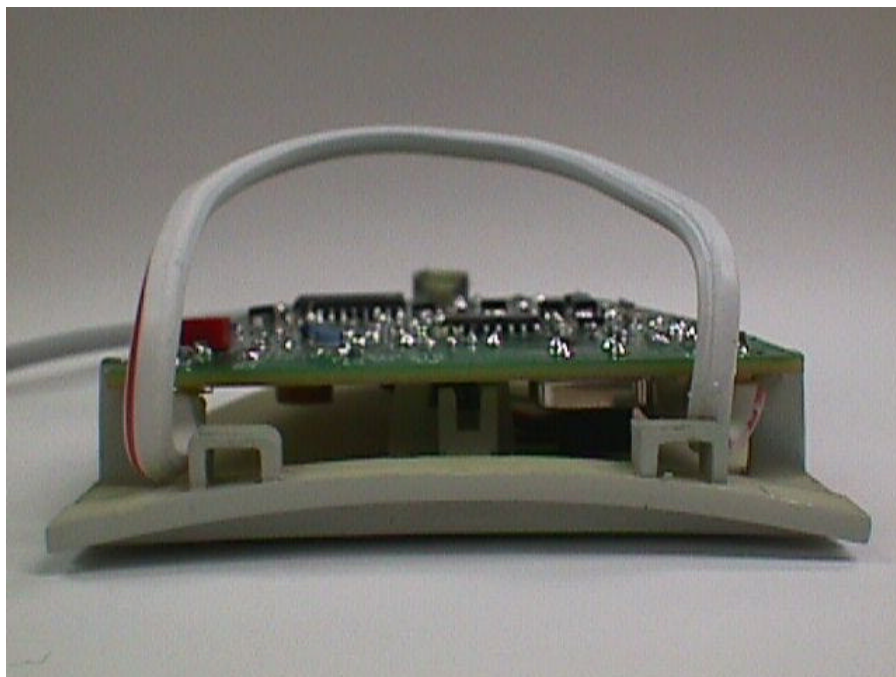


FIGURE 20: Receiver Antenna and inside Front End

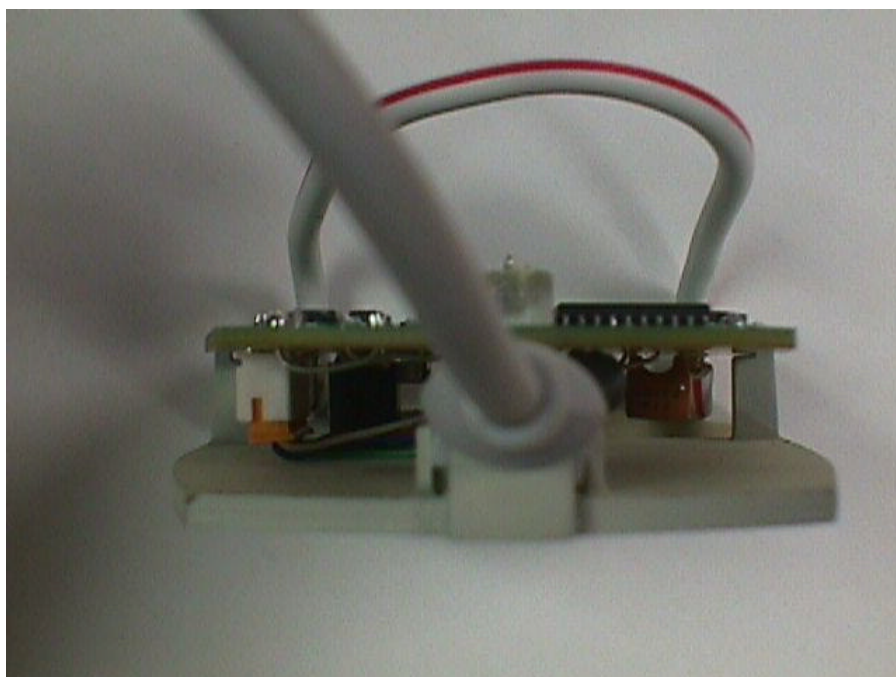


FIGURE 21: Receiver Antenna and inside Rear End

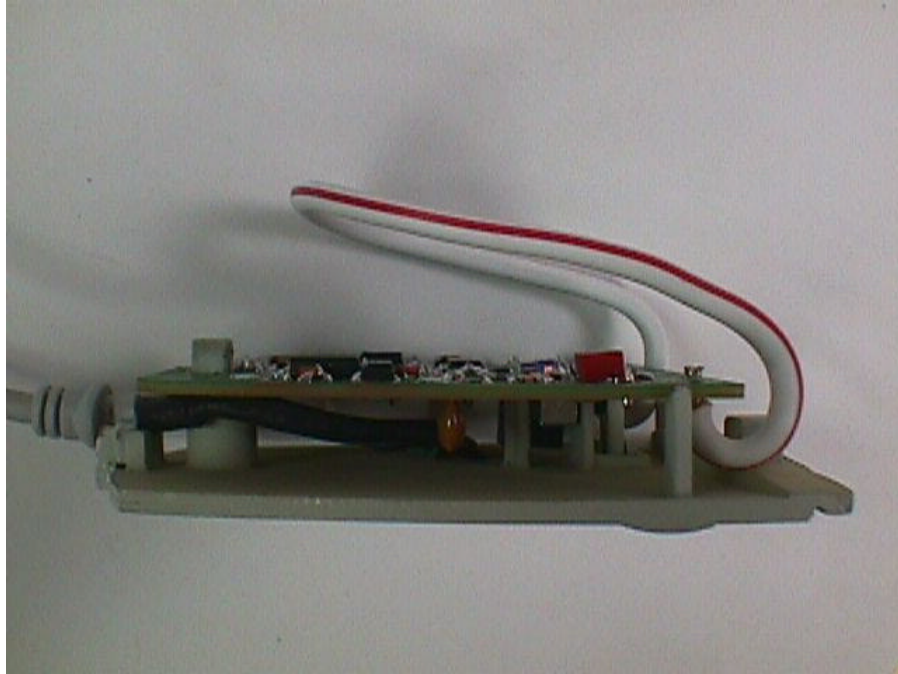


FIGURE 22: Receiver Antenna and inside Side



FIGURE 23: Receiver Inside Top Bevel

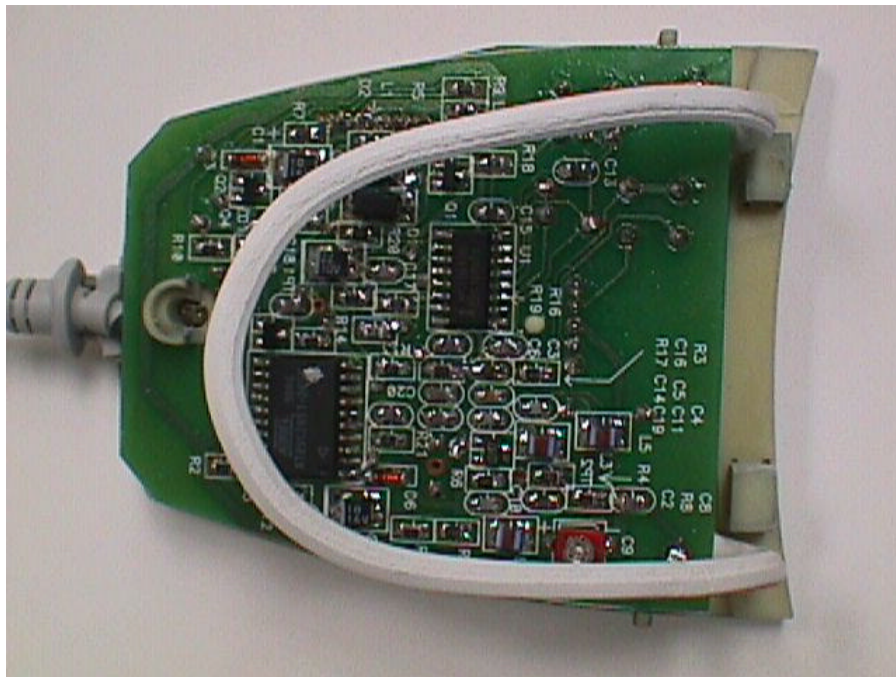


FIGURE 24: Receiver Inside Top

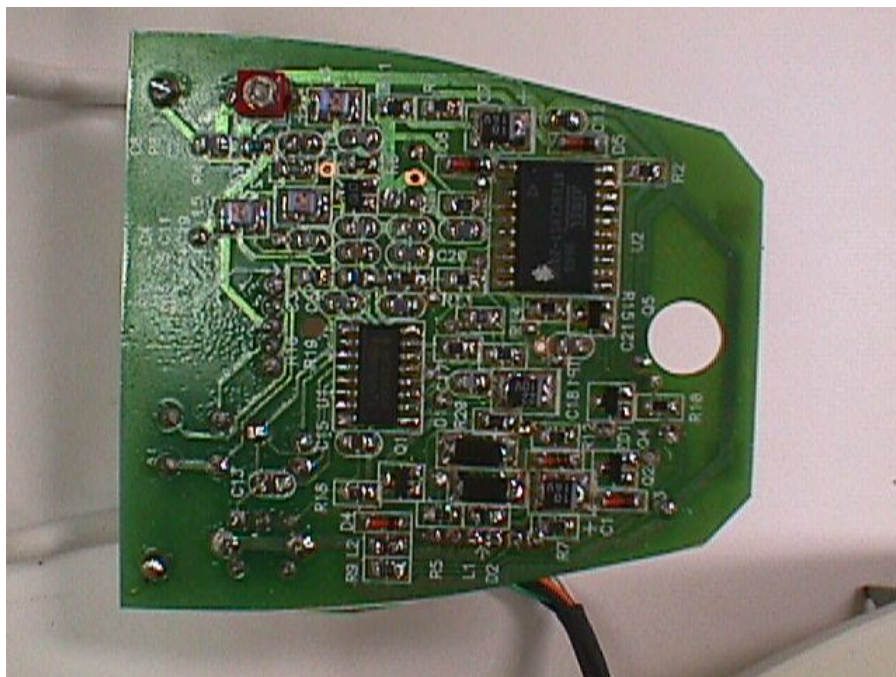


FIGURE 25: Receiver PCB Component Side



FIGURE 26: Receiver Top



FIGURE 27: Receiver Bottom



FIGURE 28: Receiver Top