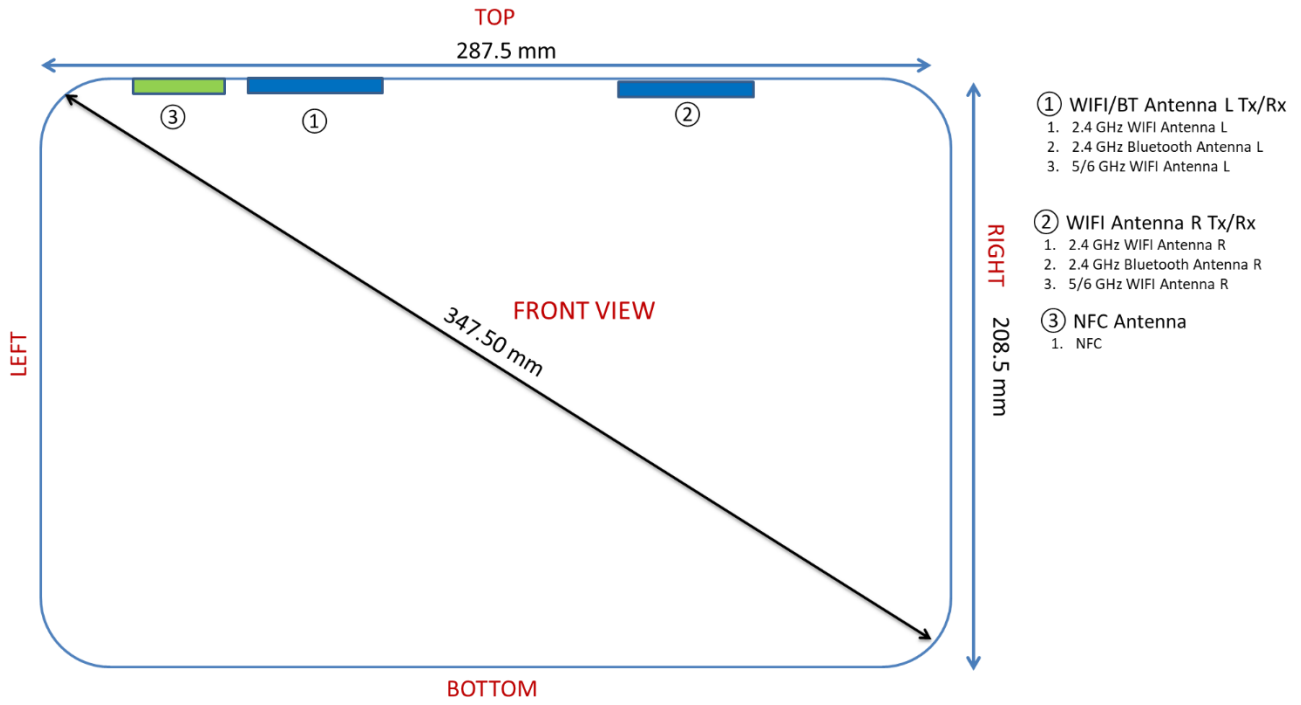


APPENDIX I: DUT ANTENNA DIAGRAM & SAR TEST SETUP PHOTOGRAPHS

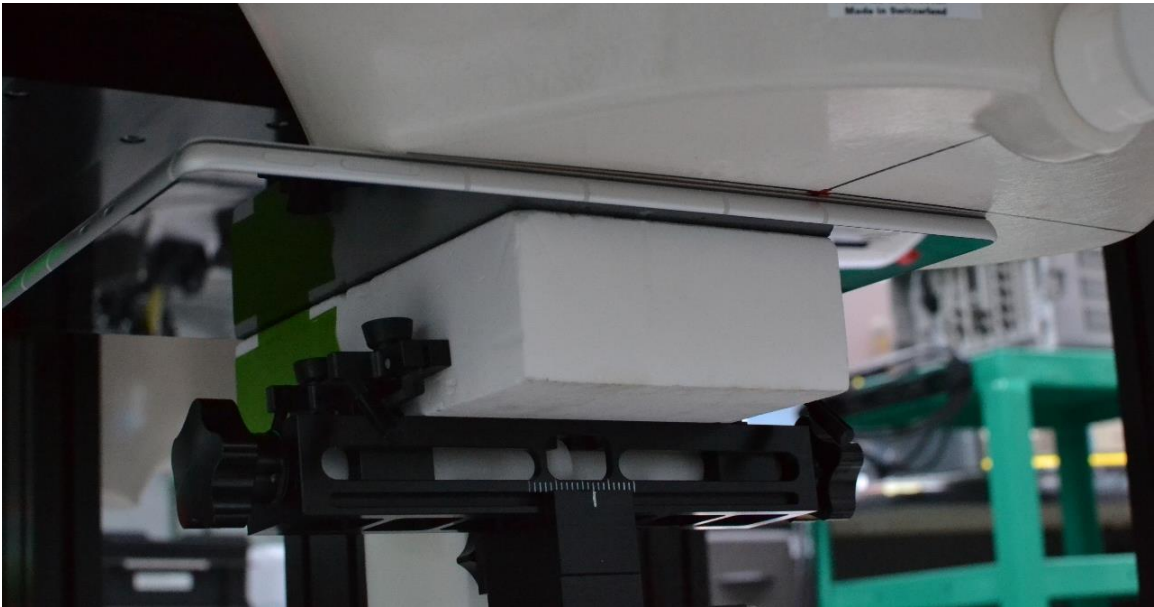
FCC ID: C3K2085	SAR EVALUATION REPORT	Approved by: Technical Manager
DUT Type: Portable Computing Device		APPENDIX I: Page 1 of 21



Note: Exact antenna dimensions and separation distances are shown in the Technical Descriptions in the FCC Filing.

**Figure I-1
 DUT Antenna Locations**

FCC ID: C3K2085	SAR EVALUATION REPORT	Approved by: Technical Manager
DUT Type: Portable Computing Device		APPENDIX I: Page 2 of 21

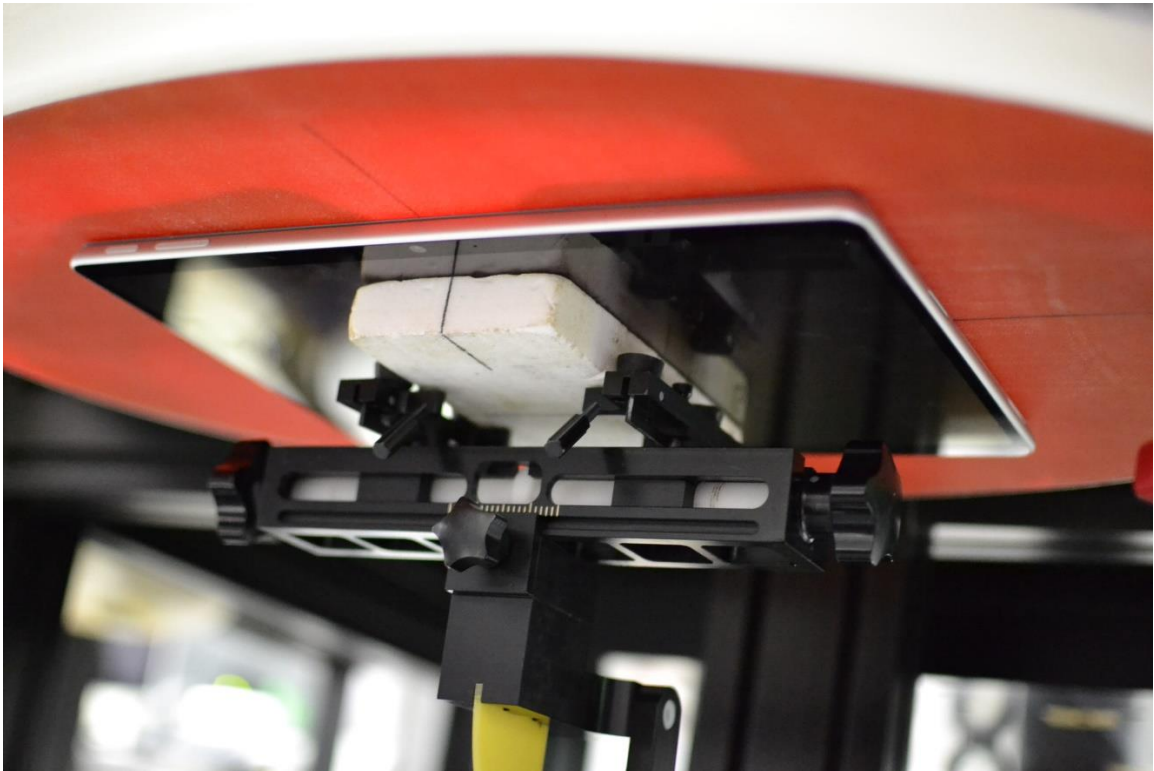


SAR Test Setup Photo 1 – Tablet, Back Side at 0 mm – Antenna R



SAR Test Setup Photo 2 – Laptop, Back Side at 25 mm – Antenna R

FCC ID: C3K2085	SAR EVALUATION REPORT	Approved by: Technical Manager
DUT Type: Portable Computing Device		APPENDIX I: Page 3 of 21



SAR Test Setup Photo 3 – Body, Back Side at 0 mm – NFC



SAR Test Setup Photo 4 – Tablet, Back Side at 0mm – Antenna L

FCC ID: C3K2085	SAR EVALUATION REPORT	Approved by: Technical Manager
DUT Type: Portable Computing Device		APPENDIX I: Page 4 of 21



SAR Test Setup Photo 5 – Tablet with keyboard accessory, Back Side at 0mm – Antenna L

FCC ID: C3K2085	SAR EVALUATION REPORT	Approved by: Technical Manager
DUT Type: Portable Computing Device		APPENDIX I: Page 5 of 21



SAR Test Setup Photo 6 – Laptop, Back Side at 25mm – Antenna L



SAR Test Setup Photo 7 – Tablet, Top Edge at 0 mm – Antenna R

FCC ID: C3K2085	SAR EVALUATION REPORT	Approved by: Technical Manager
DUT Type: Portable Computing Device		APPENDIX I: Page 6 of 21

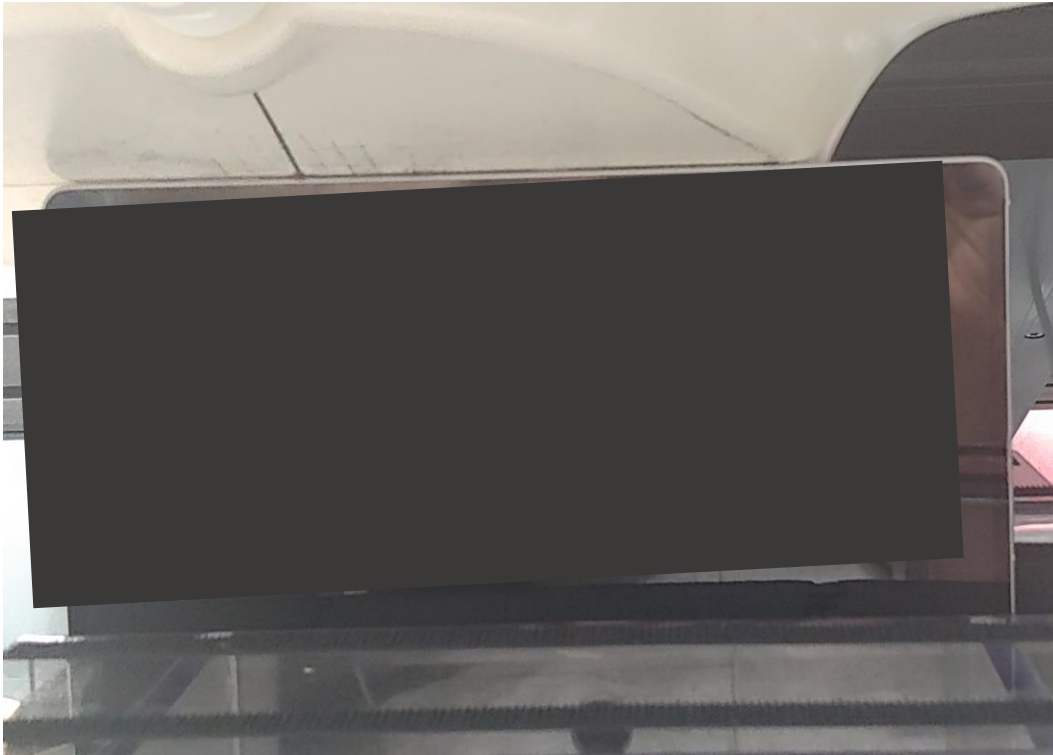


SAR Test Setup Photo 8 – Tablet with keyboard accessory, Top Edge at 0 mm – Antenna R

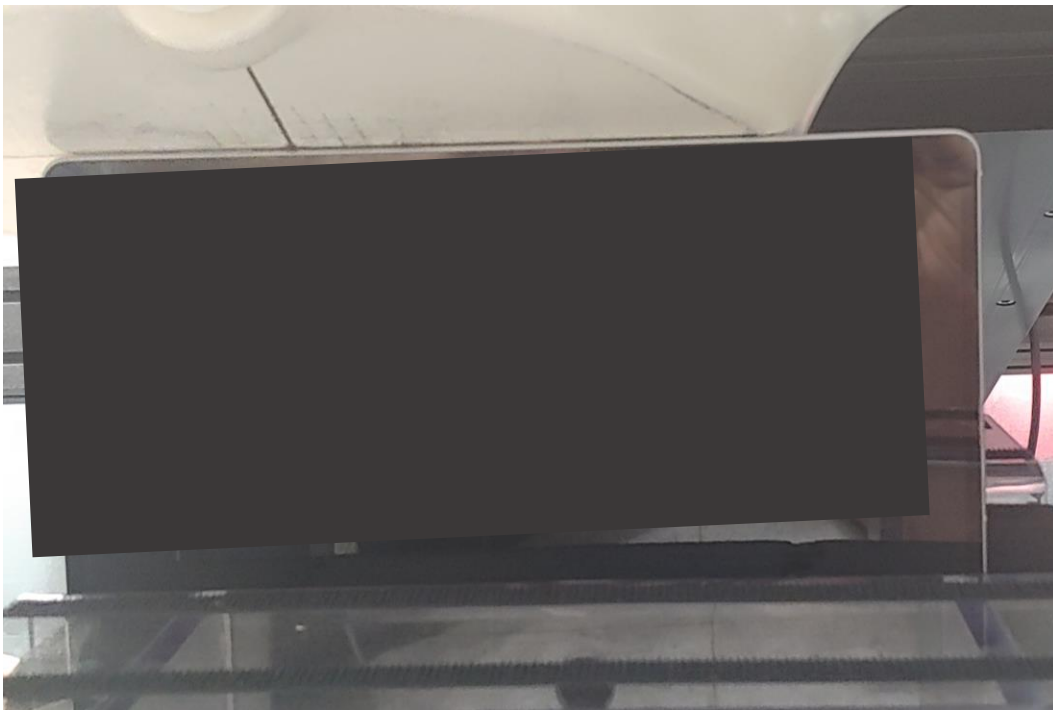


SAR Test Setup Photo 9 – Laptop, Top Edge at 25 mm – Antenna R

FCC ID: C3K2085	SAR EVALUATION REPORT	Approved by: Technical Manager
DUT Type: Portable Computing Device		APPENDIX I: Page 7 of 21



SAR Test Setup Photo 10 – Tablet, Top Edge at 0mm – Antenna L



SAR Test Setup Photo 11 – Tablet with keyboard accessory, Top Edge at 0mm – Antenna L

FCC ID: C3K2085	SAR EVALUATION REPORT	Approved by: Technical Manager
DUT Type: Portable Computing Device		APPENDIX I: Page 8 of 21

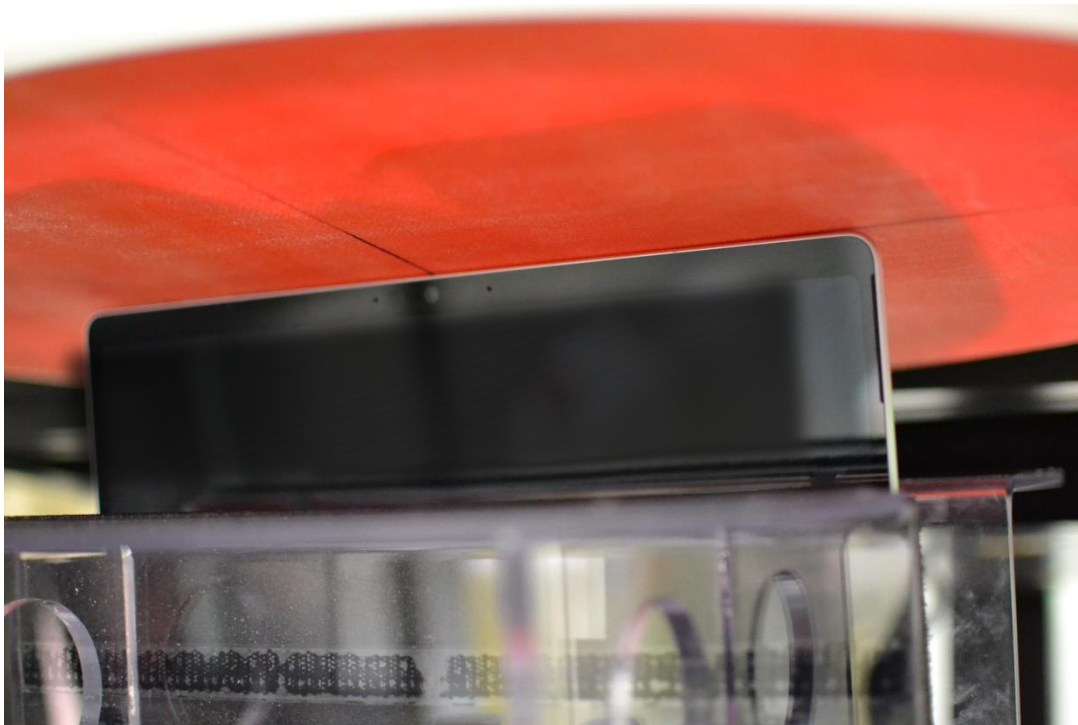


SAR Test Setup Photo 12 – Laptop, Top Edge at 25mm – Antenna L



SAR Test Setup Photo 13 – Tablet, Bottom Edge at 0 mm – Antenna R

FCC ID: C3K2085	SAR EVALUATION REPORT	Approved by: Technical Manager
DUT Type: Portable Computing Device		APPENDIX I: Page 9 of 21



SAR Test Setup Photo 14 – Body, Top Edge at 0 mm – NFC



SAR Test Setup Photo 15 – Laptop, Bottom Edge at 0 mm – Antenna R

FCC ID: C3K2085	SAR EVALUATION REPORT	Approved by: Technical Manager
DUT Type: Portable Computing Device		APPENDIX I: Page 10 of 21

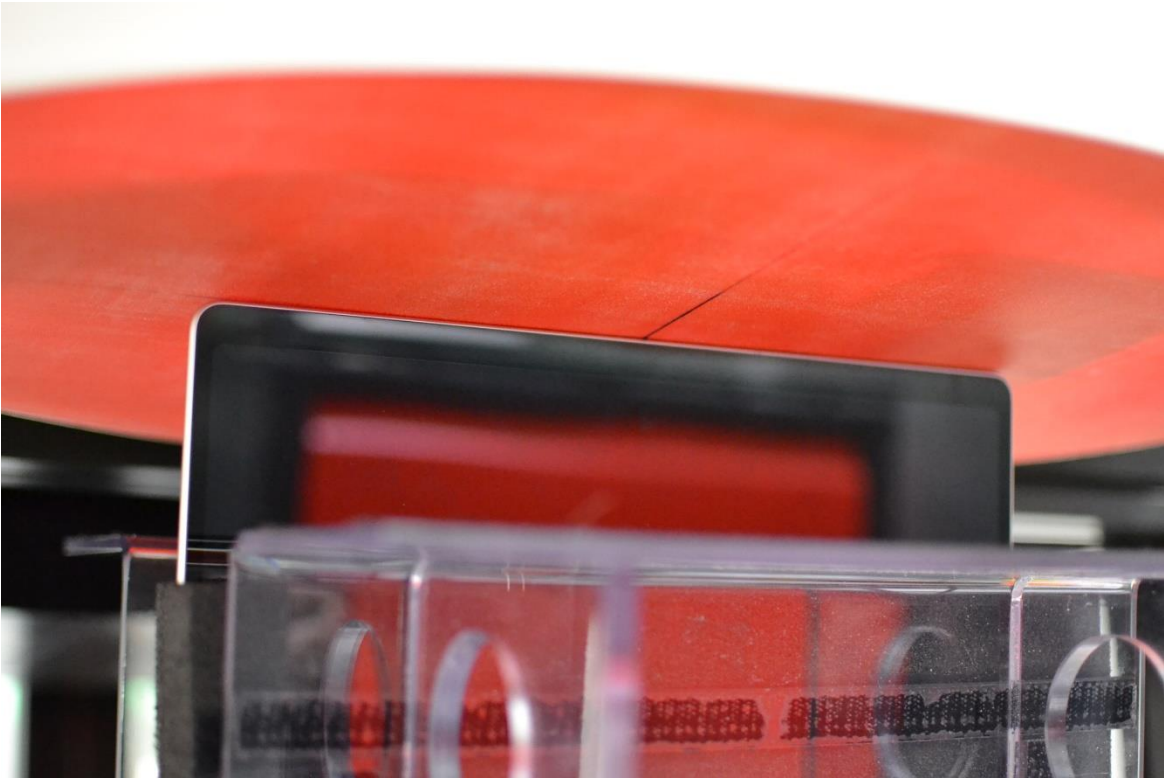


SAR Test Setup Photo 16 – Tablet, Bottom Edge at 0mm – Antenna L

FCC ID: C3K2085	SAR EVALUATION REPORT	Approved by: Technical Manager
DUT Type: Portable Computing Device		APPENDIX I: Page 11 of 21



SAR Test Setup Photo 17 – Laptop, Bottom Edge at 0mm – Antenna L

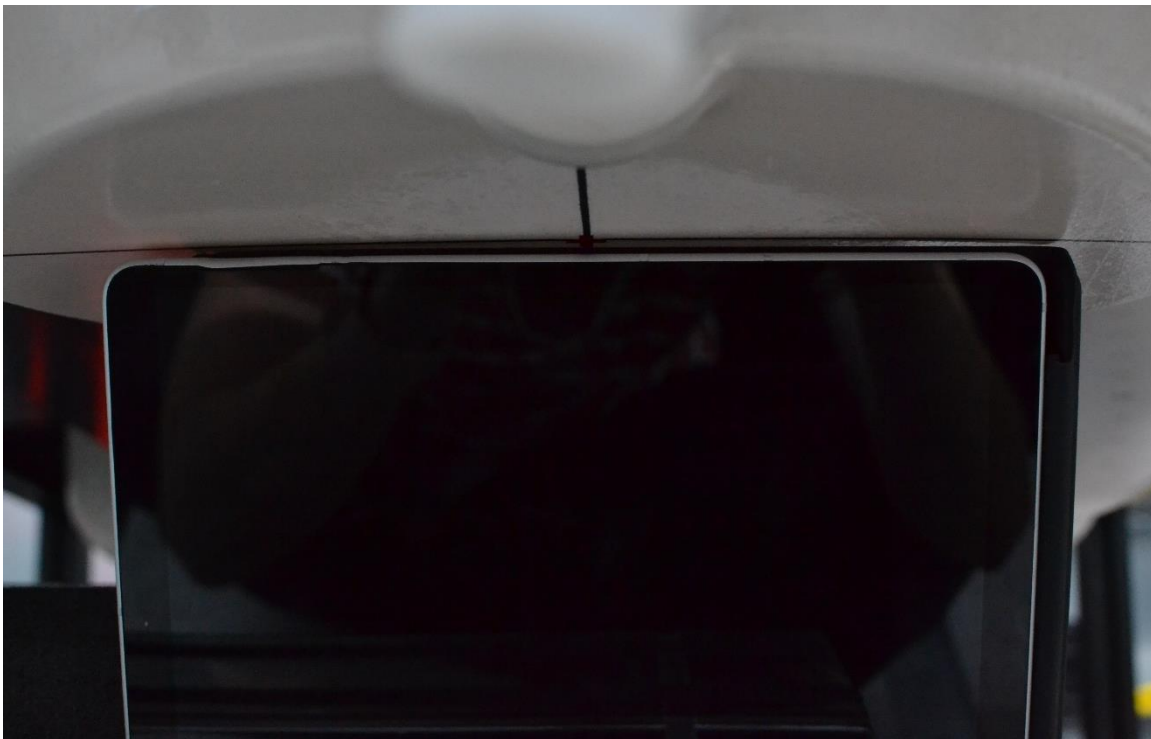


SAR Test Setup Photo 18 – Body, Bottom Edge at 0 mm – NFC

FCC ID: C3K2085	SAR EVALUATION REPORT	Approved by: Technical Manager
DUT Type: Portable Computing Device		APPENDIX I: Page 12 of 21

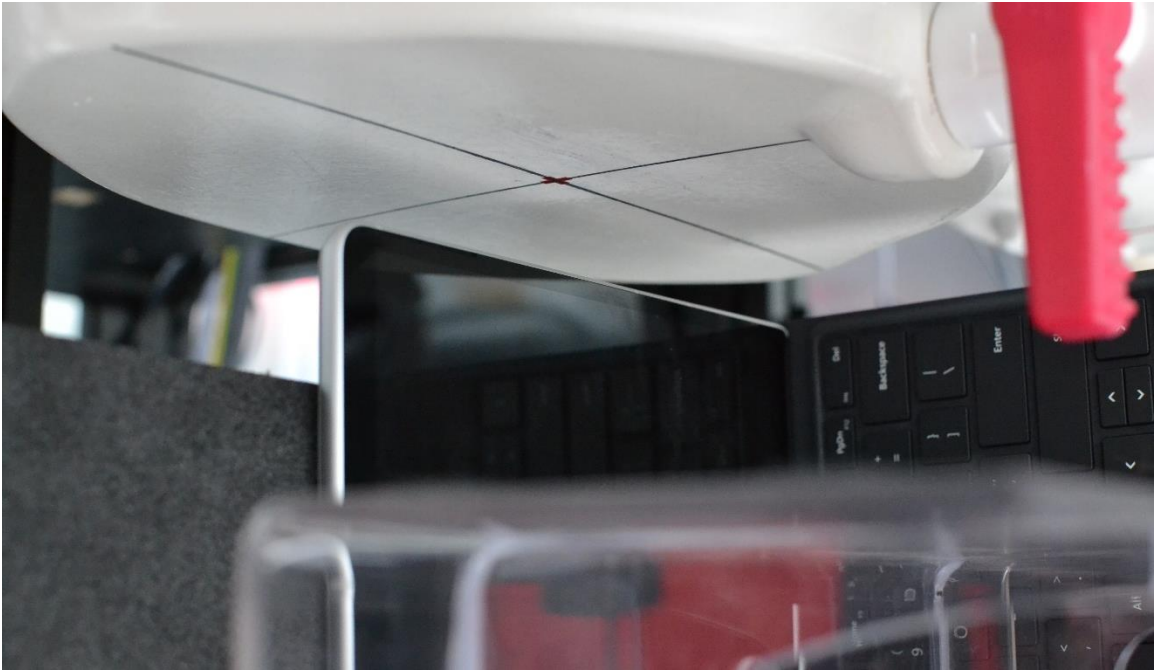


SAR Test Setup Photo 19 – Tablet, Right Edge at 0 mm – Antenna R and Antenna L

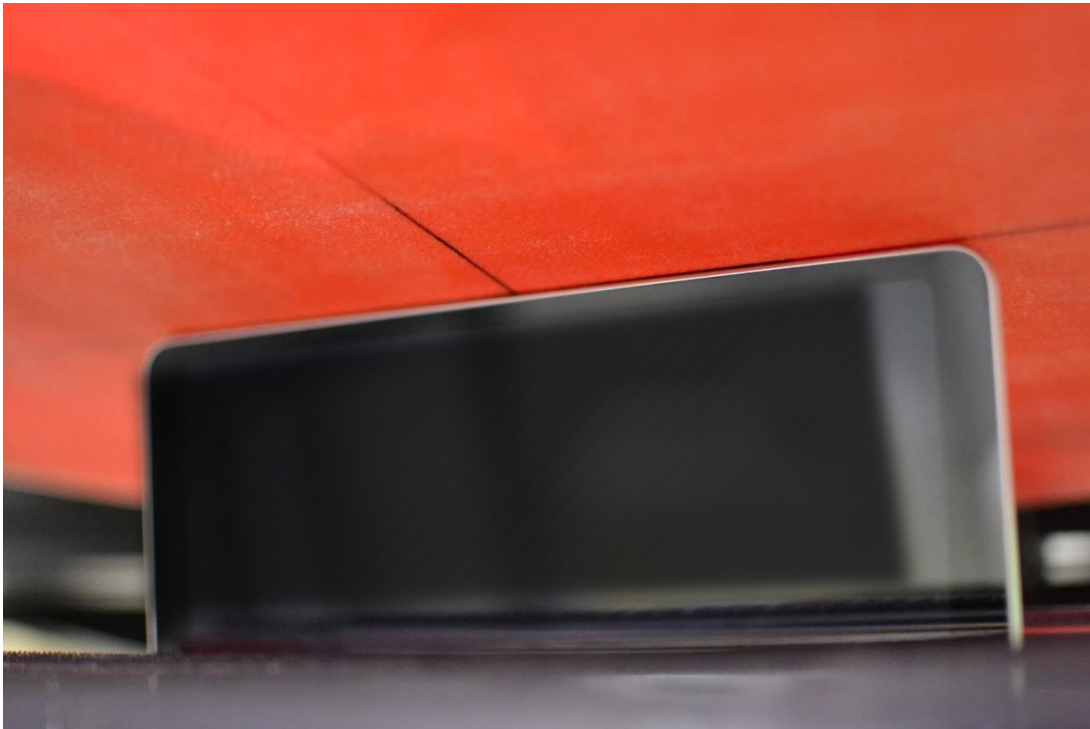


SAR Test Setup Photo 20 – Tablet with keyboard accessory, Right Edge at 0 mm – Antenna R and Antenna L

FCC ID: C3K2085	SAR EVALUATION REPORT	Approved by: Technical Manager
DUT Type: Portable Computing Device		APPENDIX I: Page 13 of 21

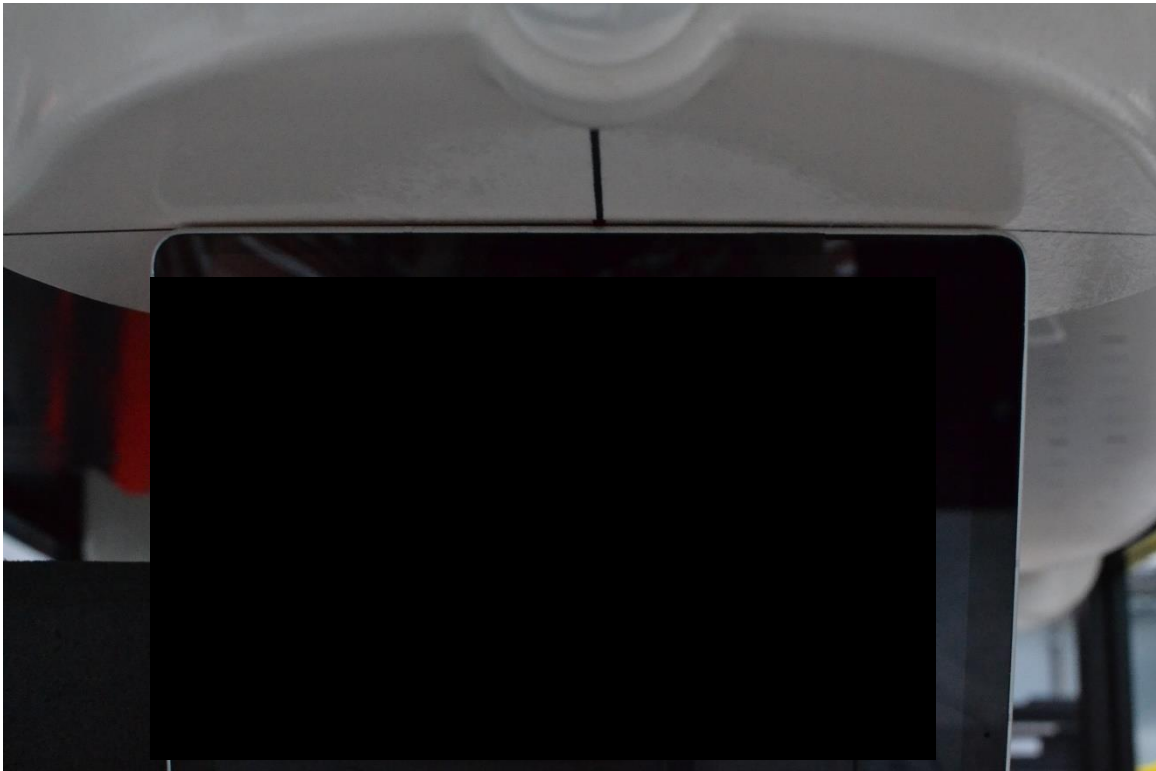


SAR Test Setup Photo 21 – Laptop, Right Edge at 25 mm – Antenna R and Antenna L

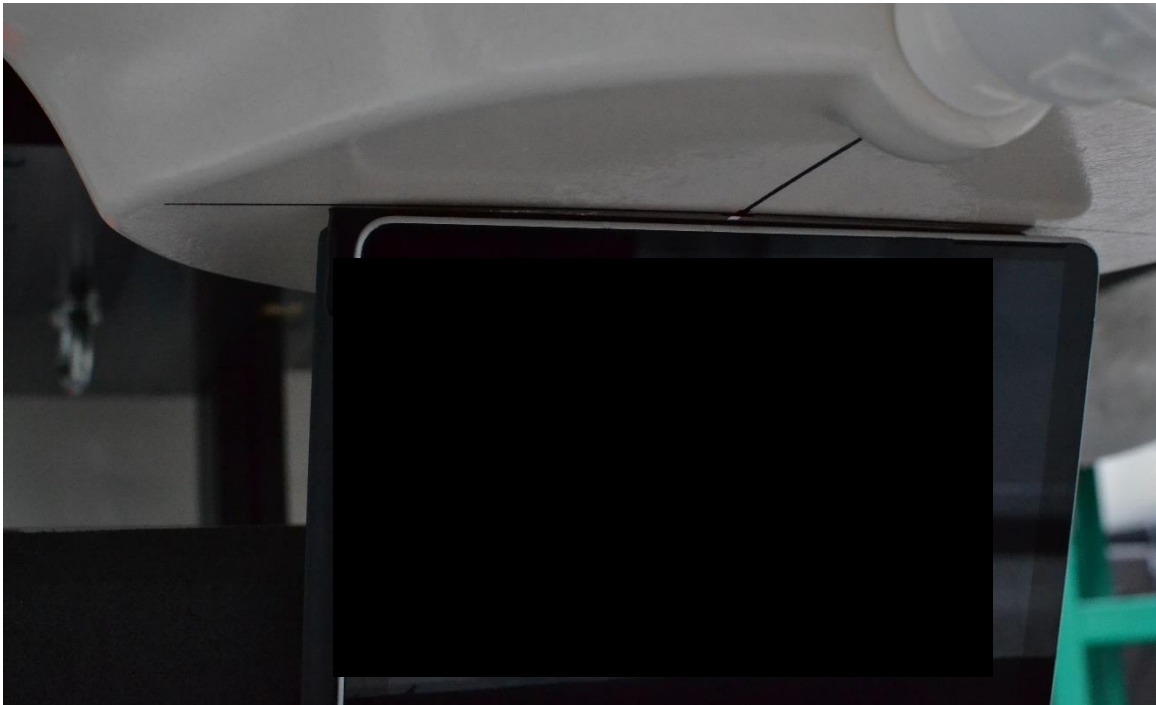


SAR Test Setup Photo 22 – Body, Right Edge at 0 mm – NFC

FCC ID: C3K2085	SAR EVALUATION REPORT	Approved by: Technical Manager
DUT Type: Portable Computing Device		APPENDIX I: Page 14 of 21

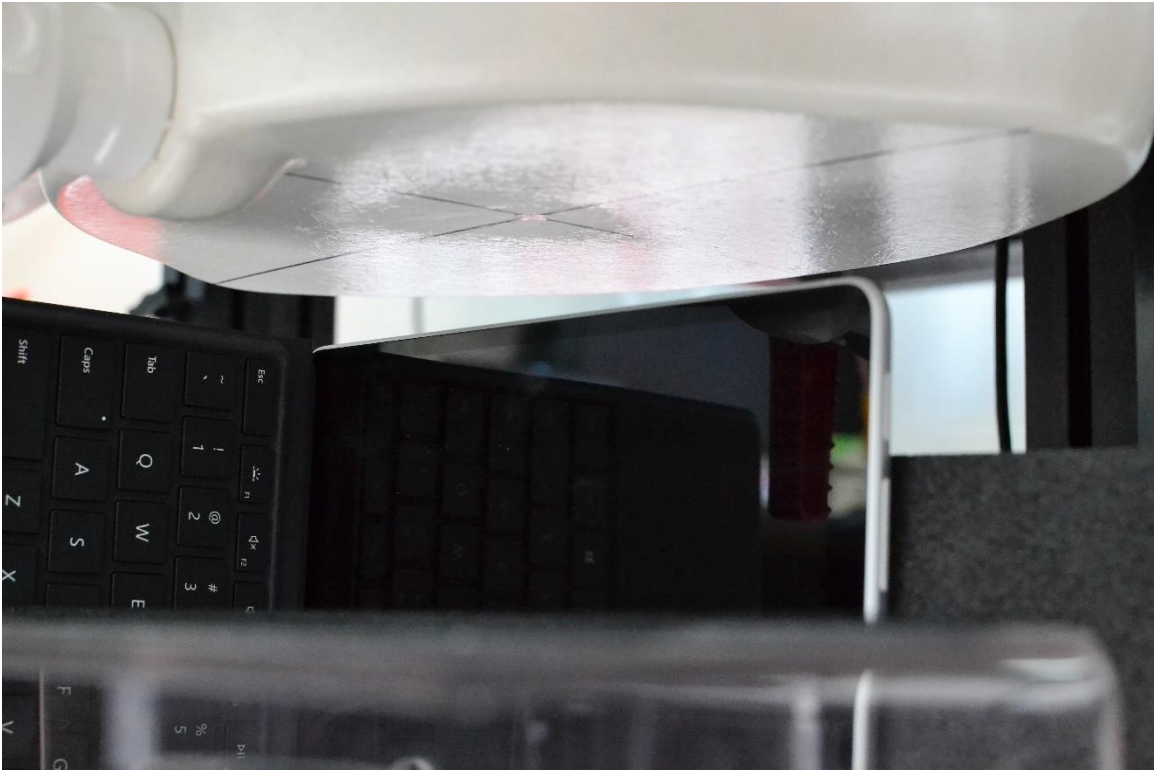


SAR Test Setup Photo 23 – Tablet, Left Edge at 0mm – Antenna R and Antenna L

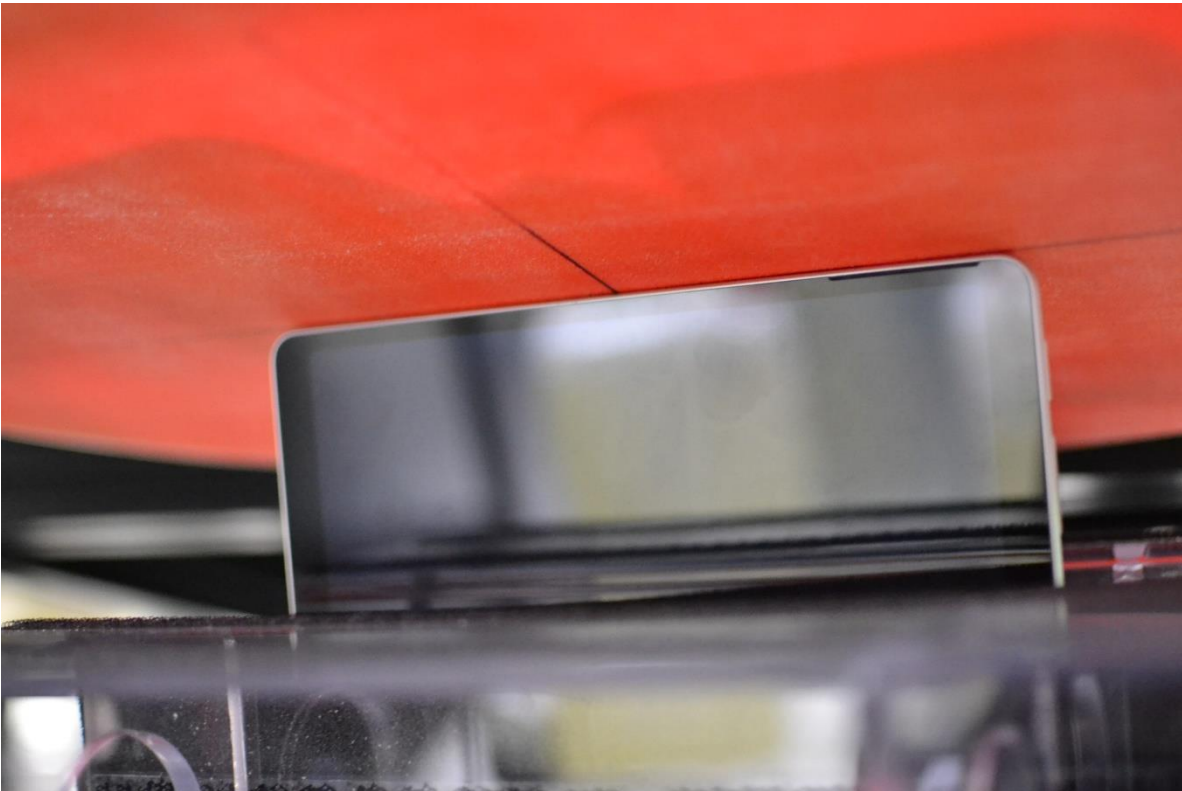


SAR Test Setup Photo 24 – Tablet with keyboard accessory, Left Edge at 0 mm – Antenna R and Antenna L

FCC ID: C3K2085	SAR EVALUATION REPORT	Approved by: Technical Manager
DUT Type: Portable Computing Device		APPENDIX I: Page 15 of 21



SAR Test Setup Photo 25 – Laptop, Left Edge at 25mm – Antenna R and Antenna L



SAR Test Setup Photo 26 – Body, Left Edge at 0 mm – NFC

FCC ID: C3K2085	SAR EVALUATION REPORT	Approved by: Technical Manager
DUT Type: Portable Computing Device		APPENDIX I: Page 16 of 21

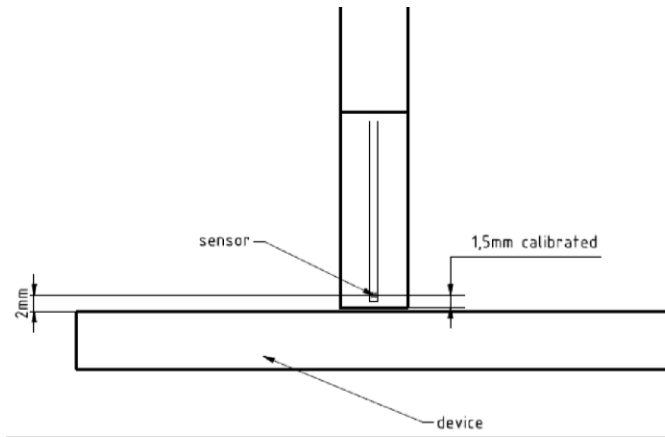


Figure I-2
EUmmWVx Probe

Note: Distances below are distance from device surface to sensor-center. Therefore, distances include 1.5 mm for Probe Tip to Sensor Calibration Points.



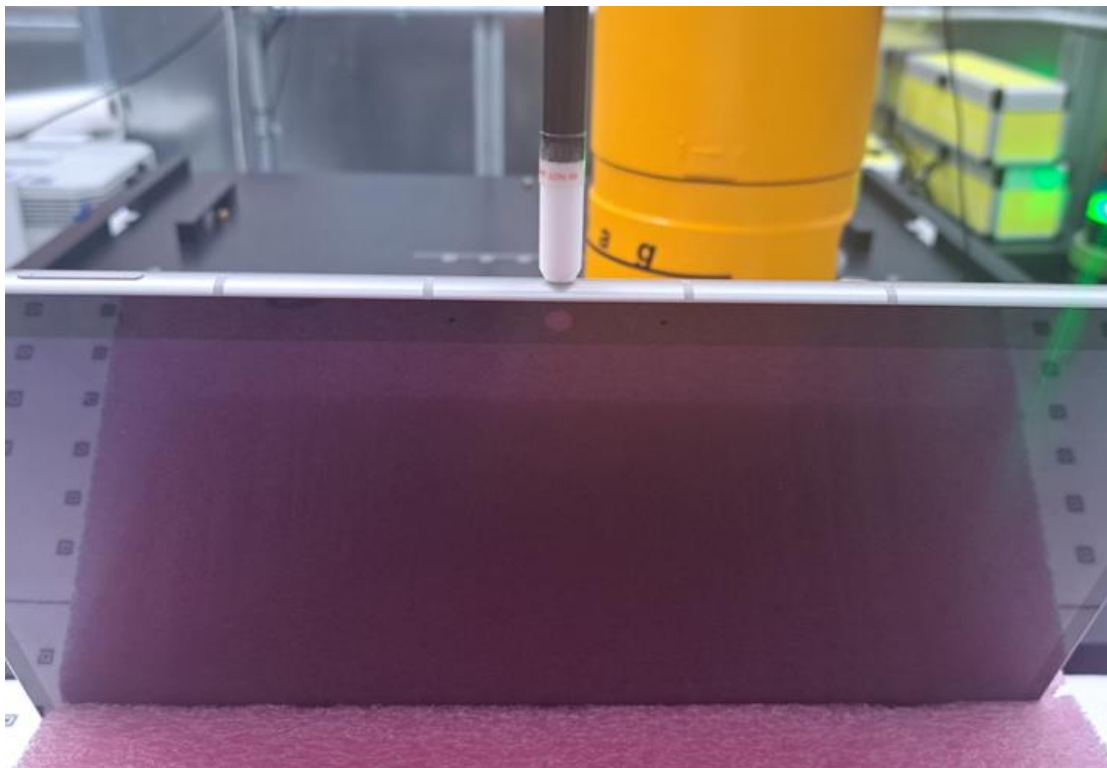
Test Setup Photo 27 – Near Field Power Density Back Side at 2 mm

PD

FCC ID: C3K2085	SAR EVALUATION REPORT	Approved by: Technical Manager
DUT Type: Portable Computing Device		APPENDIX I: Page 17 of 21

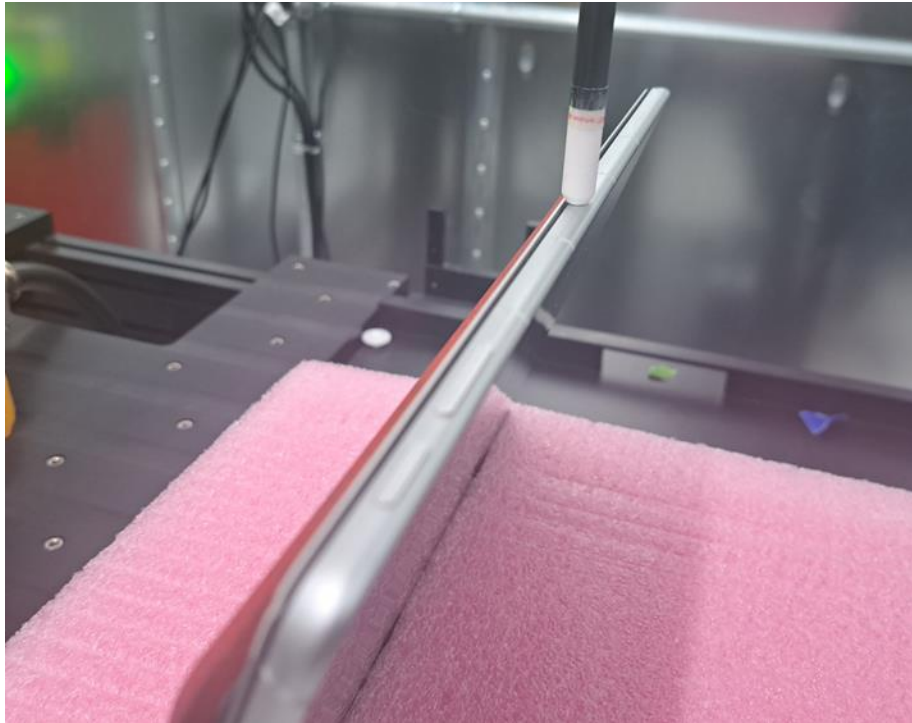


PD Test Setup Photo 28 – Near Field Power Density Back Side at 25 mm

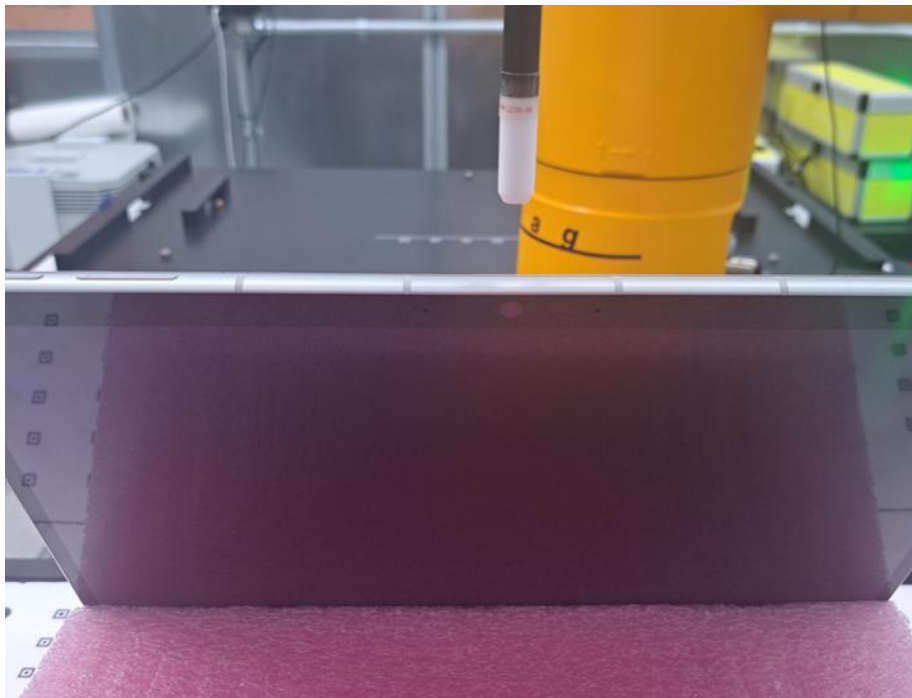


PD Test Setup Photo 29 – Near Field Power Density Top Edge at 2 mm

FCC ID: C3K2085	SAR EVALUATION REPORT	Approved by: Technical Manager
DUT Type: Portable Computing Device		APPENDIX I: Page 18 of 21

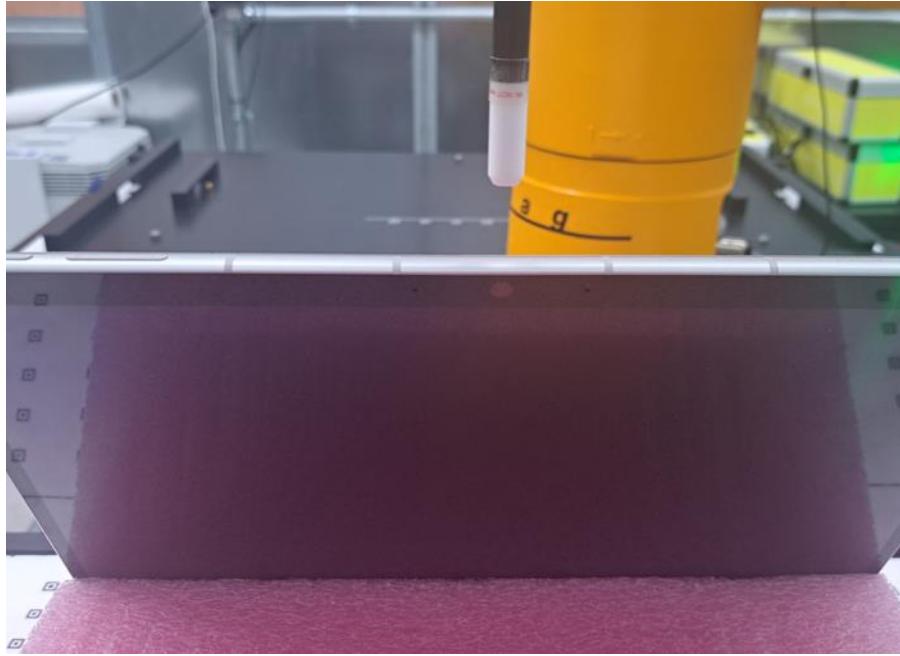


PD Test Setup Photo 30 – Near Field Power Density Top Edge with keyboard accessory at 2 mm

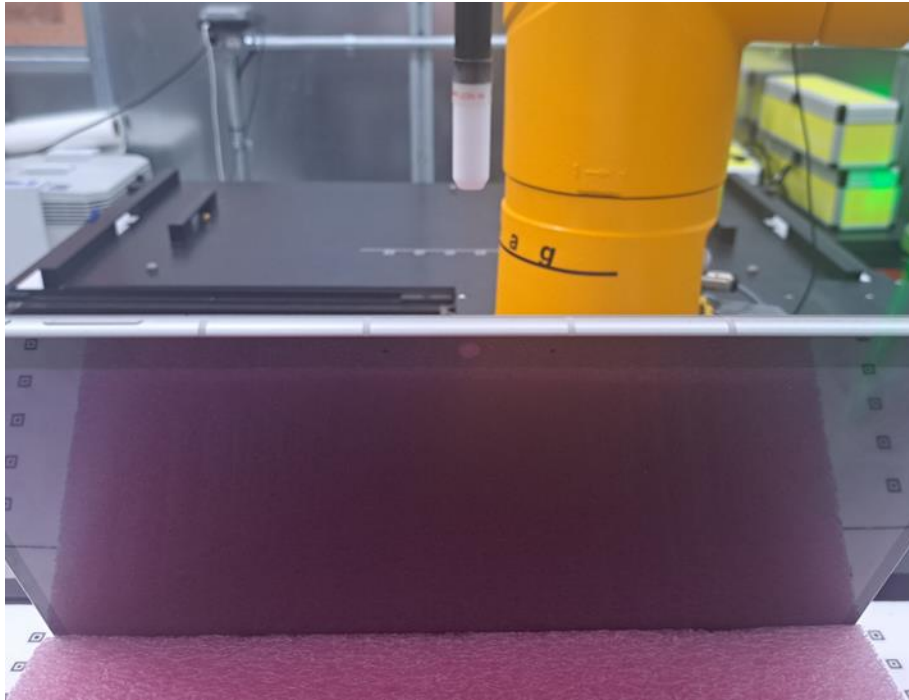


PD Test Setup Photo 31 – Near Field Power Density Top Edge at 10.01 mm

FCC ID: C3K2085	SAR EVALUATION REPORT	Approved by: Technical Manager
DUT Type: Portable Computing Device		APPENDIX I: Page 19 of 21



PD Test Setup Photo 32 – Near Field Power Density Top Edge at 8.94 mm



PD Test Setup Photo 33 – Near Field Power Density Top Edge at 25 mm

FCC ID: C3K2085	SAR EVALUATION REPORT	Approved by: Technical Manager
DUT Type: Portable Computing Device		APPENDIX I: Page 20 of 21



PD Test Setup Photo 34 – Near Field Power Density Laptop Bottom Edge at 2 mm

FCC ID: C3K2085	SAR EVALUATION REPORT	Approved by: Technical Manager
DUT Type: Portable Computing Device		APPENDIX I: Page 21 of 21