

Measurement Report for WLAN 2.4GHz, EDGE BOTTOM, Chain 0

Exposure Conditions

Band	WLAN 2.4GHz	TSL Permittivity	38.2
Frequency [MHz] Channel Number	2437.000 6	TSL Conductivity [S/m]	1.73
Group UID	WLAN 10315-AAB	Phantom Section TSL	Flat HSL
Conversion Factor	8.05	Test Distance [mm]	0.00
Communication Configuration	IEEE 802.11b WiFi 2.4 GHz (DSSS, 1 Mbps, 96pc duty cycle)		

Hardware Setup

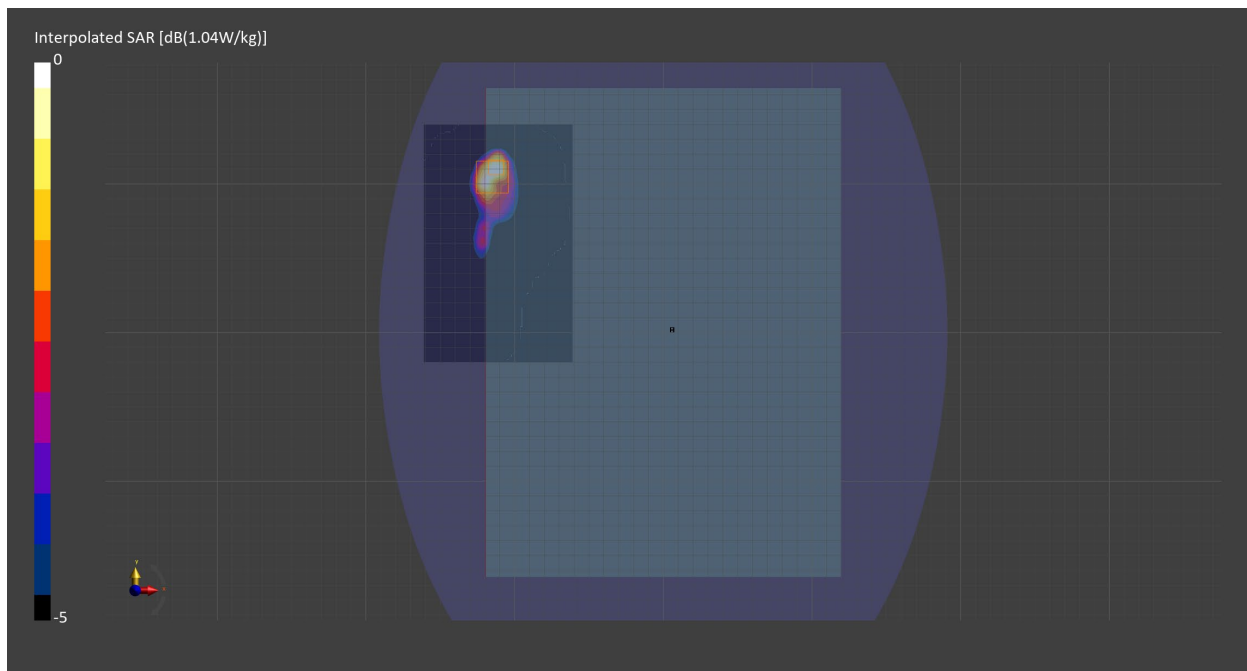
Probe Calibration Date	EX3DV4 - SN7710 2023-02-03	Phantom	ELI V8.0 (20deg probe tilt) - SN2160
DAE Calibration Date	DAE4 Sn1715 2023-01-23	TSL Meas. Date	HBBL-600-10000 2023-Dec-11

Scans Setup

	Area Scan	Zoom Scan
Grid Extents [mm]	100.0 x 160.0	30.0 x 30.0 x 30.0
Grid Steps [mm]	10.0 x 10.0	5.0 x 5.0 x 1.5
Sensor Surface [mm]	3.0	1.4
Graded Grid	N/A	Yes
M2/M1 [%]		75.0
Dist 3dB Peak [mm]		9.0

Measurement Results

	Area Scan	Zoom Scan
psSAR1g [W/Kg]	0.457	0.441
psSAR10g [W/Kg]	0.230	0.214
Power Drift [dB]	N/A	-0.12



Measurement Report for WLAN 2.4GHz, EDGE BOTTOM, Chain 1

Exposure Conditions

Band	WLAN 2.4GHz	TSL Permittivity	38.2
Frequency [MHz] Channel Number	2437.000 6	TSL Conductivity [S/m]	1.73
Group UID	WLAN 10315-AAB	Phantom Section TSL	Flat HSL
Conversion Factor	8.05	Test Distance [mm]	0.00
Communication Configuration	IEEE 802.11b WiFi 2.4 GHz (DSSS, 1 Mbps, 96pc duty cycle)		

Hardware Setup

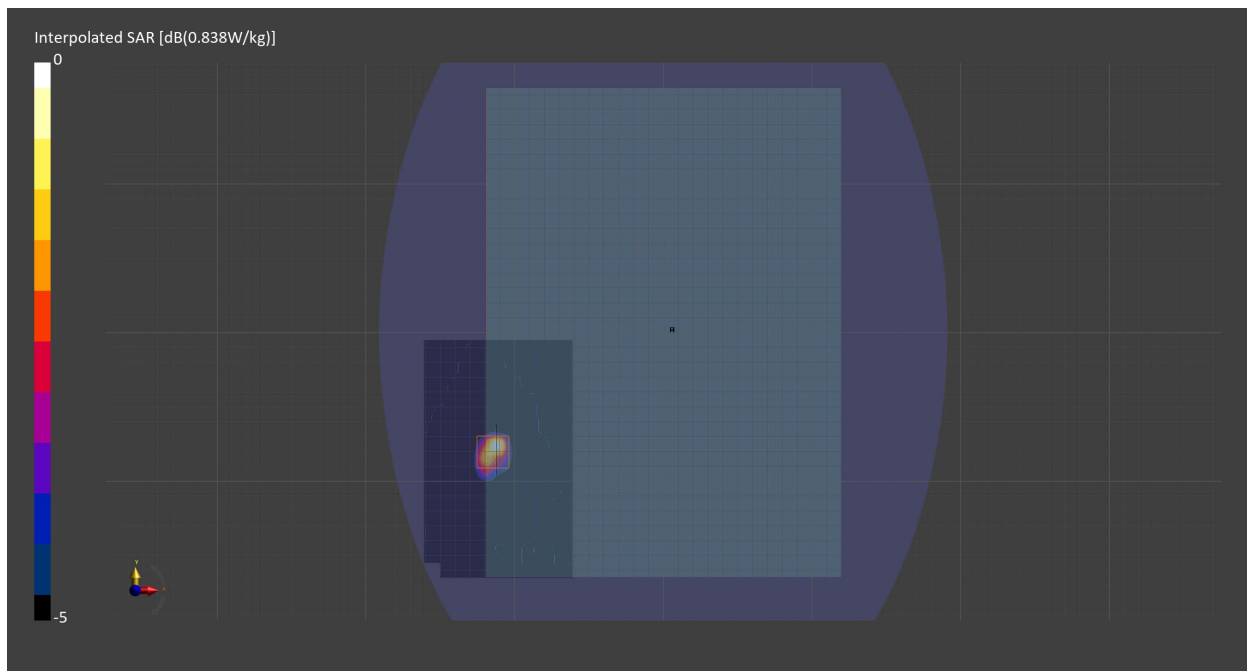
Probe Calibration Date	EX3DV4 - SN7710 2023-02-03	Phantom	ELI V8.0 (20deg probe tilt) - SN2160
DAE Calibration Date	DAE4 Sn1715 2023-01-23	TSL Meas. Date	HBBL-600-10000 2023-Dec-11

Scans Setup

	Area Scan	Zoom Scan
Grid Extents [mm]	100.0 x 160.0	30.0 x 30.0 x 30.0
Grid Steps [mm]	10.0 x 10.0	5.0 x 5.0 x 1.5
Sensor Surface [mm]	3.0	1.4
Graded Grid	N/A	Yes
M2/M1 [%]		71.6
Dist 3dB Peak [mm]		7.7

Measurement Results

	Area Scan	Zoom Scan
psSAR1g [W/Kg]	0.290	0.301
psSAR10g [W/Kg]	0.133	0.127
Power Drift [dB]	N/A	0.26



Measurement Report for U-NII-1, U-NII-2A, EDGE BOTTOM, Chain 0

Exposure Conditions

Band	U-NII-1, U-NII-2A	TSL Permittivity	36.7
Frequency [MHz] Channel Number	5310.000 62	TSL Conductivity [S/m]	4.80
Group UID	WLAN 10534-AAC	Phantom Section TSL	Flat HSL
Conversion Factor	6.05	Test Distance [mm]	0.00
Communication Configuration	IEEE 802.11ac WiFi (40MHz, MCS0, 99pc duty cycle)		

Hardware Setup

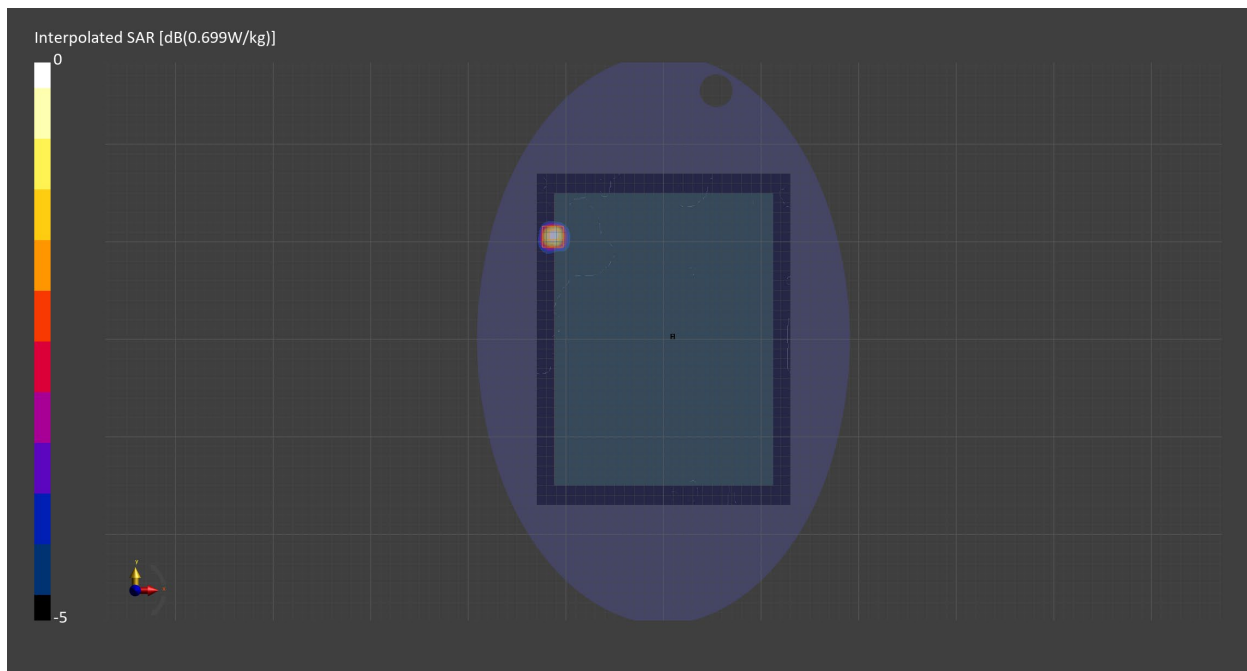
Probe Calibration Date	EX3DV4 - SN7710 2024-01-16	Phantom	ELI V8.0 (20deg probe tilt) - SN2160
DAE Calibration Date	DAE4 Sn1715 2024-02-12	TSL Meas. Date	HBBL600-10000V6 2024-Apr-12

Scans Setup

	Area Scan	Zoom Scan
Grid Extents [mm]	260.0 x 340.0	22.0 x 22.0 x 22.0
Grid Steps [mm]	10.0 x 10.0	4.0 x 4.0 x 1.4
Sensor Surface [mm]	3.0	1.4
Graded Grid	N/A	Yes
M2/M1 [%]		62.1
Dist 3dB Peak [mm]		10.4

Measurement Results

	Area Scan	Zoom Scan
psSAR1g [W/Kg]	0.518	0.561
psSAR10g [W/Kg]	0.201	0.204
Power Drift [dB]	0.03	0.03



Measurement Report for U-NII-1, U-NII-2A, EDGE BOTTOM, Chain 1

Exposure Conditions

Band	U-NII-1, U-NII-2A	TSL Permittivity	36.7
Frequency [MHz] Channel Number	5300.000 60	TSL Conductivity [S/m]	4.79
Group UID	WLAN 10317-AAD	Phantom Section TSL	Flat HSL
Conversion Factor	6.05	Test Distance [mm]	0.00
Communication Configuration	IEEE 802.11a WiFi 5 GHz (OFDM, 6 Mbps, 96pc duty cycle)		

Hardware Setup

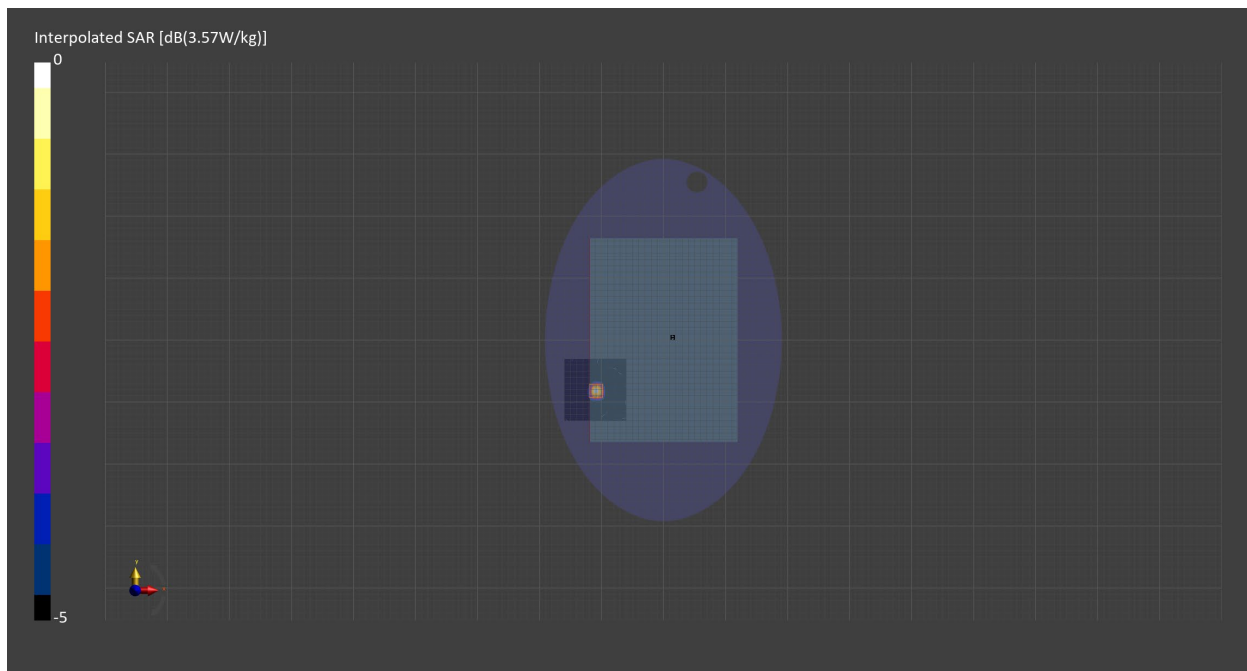
Probe Calibration Date	EX3DV4 - SN7710 2024-01-16	Phantom	ELI V8.0 (20deg probe tilt) - SN2160
DAE Calibration Date	DAE4 Sn1715 2024-02-12	TSL Meas. Date	HBBL600-10000V6 2024-Apr-12

Scans Setup

	Area Scan	Zoom Scan
Grid Extents [mm]	100.0 x 100.0	22.0 x 22.0 x 22.0
Grid Steps [mm]	10.0 x 10.0	4.0 x 4.0 x 1.4
Sensor Surface [mm]	3.0	1.4
Graded Grid	N/A	Yes
M2/M1 [%]		62.2
Dist 3dB Peak [mm]		9.6

Measurement Results

	Area Scan	Zoom Scan
psSAR1g [W/Kg]	0.964	0.961
psSAR10g [W/Kg]	0.354	0.343
Power Drift [dB]	0.04	0.07



Measurement Report for U-NII-2C Standalone, EDGE BOTTOM, Chain 0

Exposure Conditions

Band	U-NII-2C Standalone	TSL Permittivity	36.0
Frequency [MHz] Channel Number	5690.000 138	TSL Conductivity [S/m]	5.23
Group UID	WLAN 10544-AAC	Phantom Section TSL	Flat HSL
Conversion Factor	5.44	Test Distance [mm]	0.00
Communication Configuration	IEEE 802.11ac WiFi (80MHz, MCS0, 99pc duty cycle)		

Hardware Setup

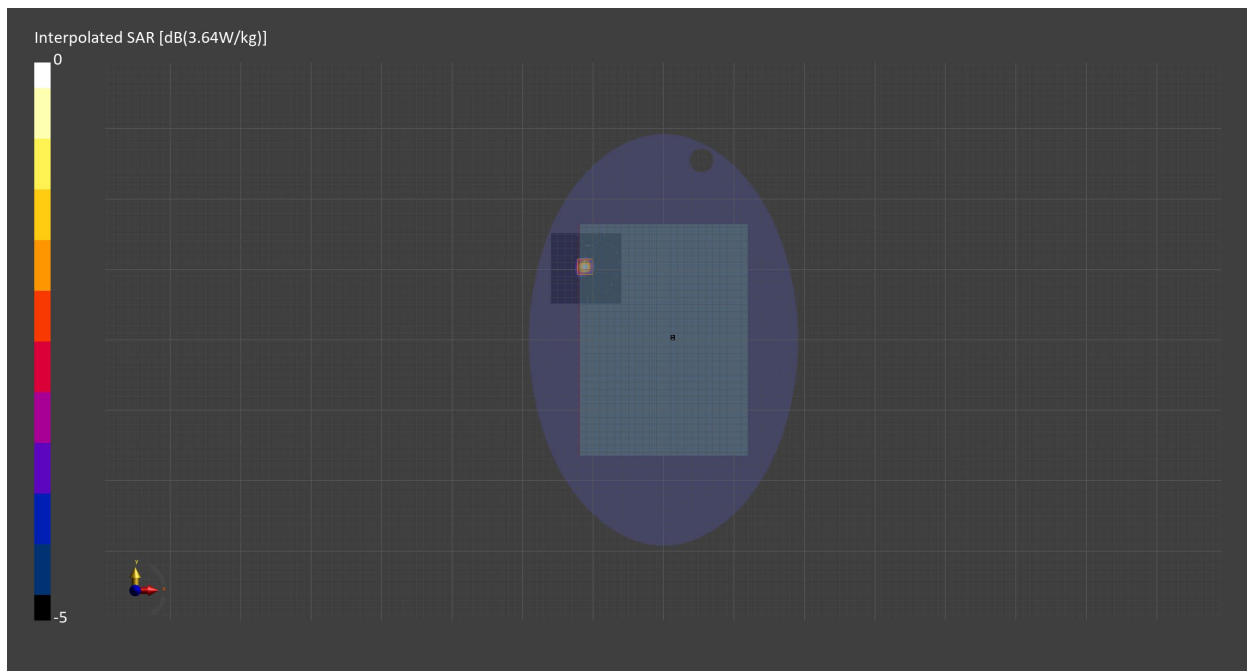
Probe Calibration Date	EX3DV4 - SN7710 2024-01-16	Phantom	ELI V8.0 (20deg probe tilt) - SN2160
DAE Calibration Date	DAE4 Sn1715 2024-02-12	TSL Meas. Date	HBBL600-10000V6 2024-Apr-12

Scans Setup

	Area Scan	Zoom Scan
Grid Extents [mm]	100.0 x 100.0	22.0 x 22.0 x 22.0
Grid Steps [mm]	10.0 x 10.0	4.0 x 4.0 x 1.4
Sensor Surface [mm]	3.0	1.4
Graded Grid	N/A	Yes
M2/M1 [%]		60.3
Dist 3dB Peak [mm]		9.2

Measurement Results

	Area Scan	Zoom Scan
psSAR1g [W/Kg]	0.873	0.916
psSAR10g [W/Kg]	0.307	0.314
Power Drift [dB]	-0.05	-0.01



Measurement Report for U-NII-2C Standalone, EDGE BOTTOM, Chain 1

Exposure Conditions

Band	U-NII-2C Standalone	TSL Permittivity	34.2
Frequency [MHz] Channel Number	5570.000 114	TSL Conductivity [S/m]	4.83
Group UID	WLAN 10636-AAD	Phantom Section TSL	Flat HSL
Conversion Factor	4.98	Test Distance [mm]	0.00
Communication Configuration	IEEE 802.11ac WiFi (160MHz, MCS0, 90pc duty cycle)		

Hardware Setup

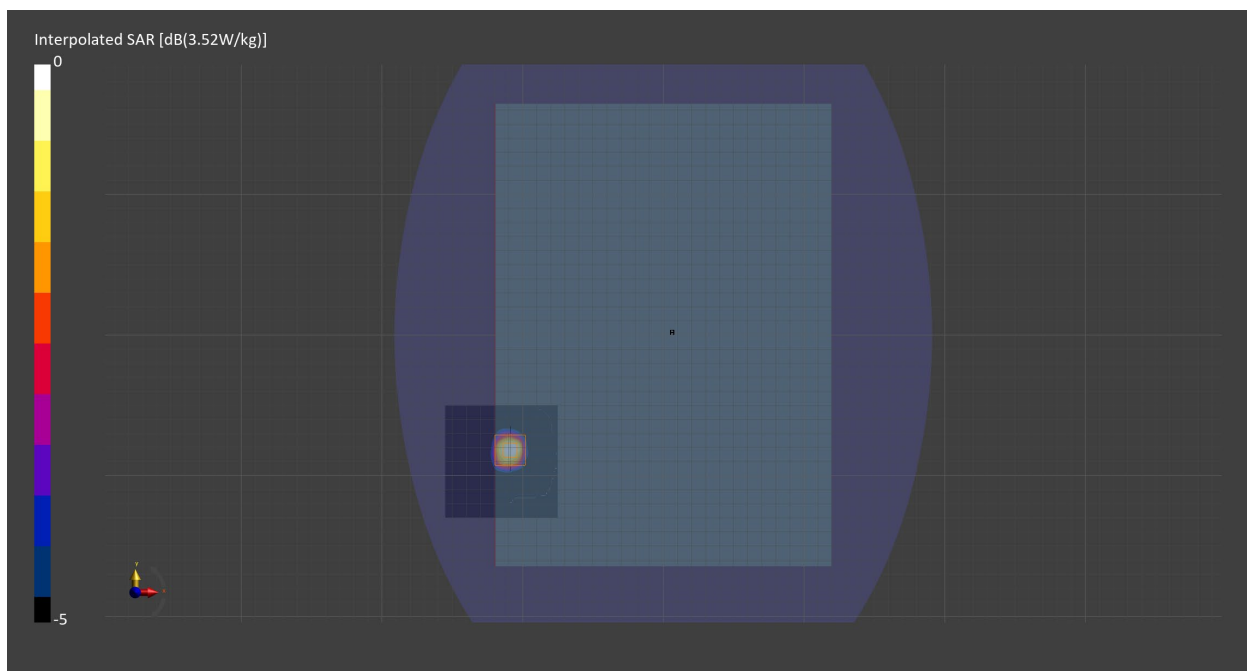
Probe Calibration Date	EX3DV4 - SN7709 2023-11-30	Phantom	ELI V8.0 (20deg probe tilt) - SN2160
DAE Calibration Date	DAE4 Sn1714 2023-11-22	TSL Meas. Date	HBBL-600-10000 2024-Jan-08

Scans Setup

	Area Scan	Zoom Scan
Grid Extents [mm]	80.0 x 80.0	22.0 x 22.0 x 22.0
Grid Steps [mm]	10.0 x 10.0	4.0 x 4.0 x 1.4
Sensor Surface [mm]	3.0	1.4
Graded Grid	N/A	Yes
M2/M1 [%]		64.1
Dist 3dB Peak [mm]		9.0

Measurement Results

	Area Scan	Zoom Scan
psSAR1g [W/Kg]	0.915	0.960
psSAR10g [W/Kg]	0.333	0.330
Power Drift [dB]	N/A	0.00



Measurement Report for Custom Band, EDGE BOTTOM, Chain 0

Exposure Conditions

Band	Custom Band	TSL Permittivity	34.3
Frequency [MHz] Channel Number	5815.000 5815000	TSL Conductivity [S/m]	5.25
Group UID	CW 10554-AAD	Phantom Section TSL	Flat HSL
Conversion Factor	5.51	Test Distance [mm]	0.00
Communication Configuration	IEEE 802.11ac WiFi (160MHz, MCS0, 99pc duty cycle)		

Hardware Setup

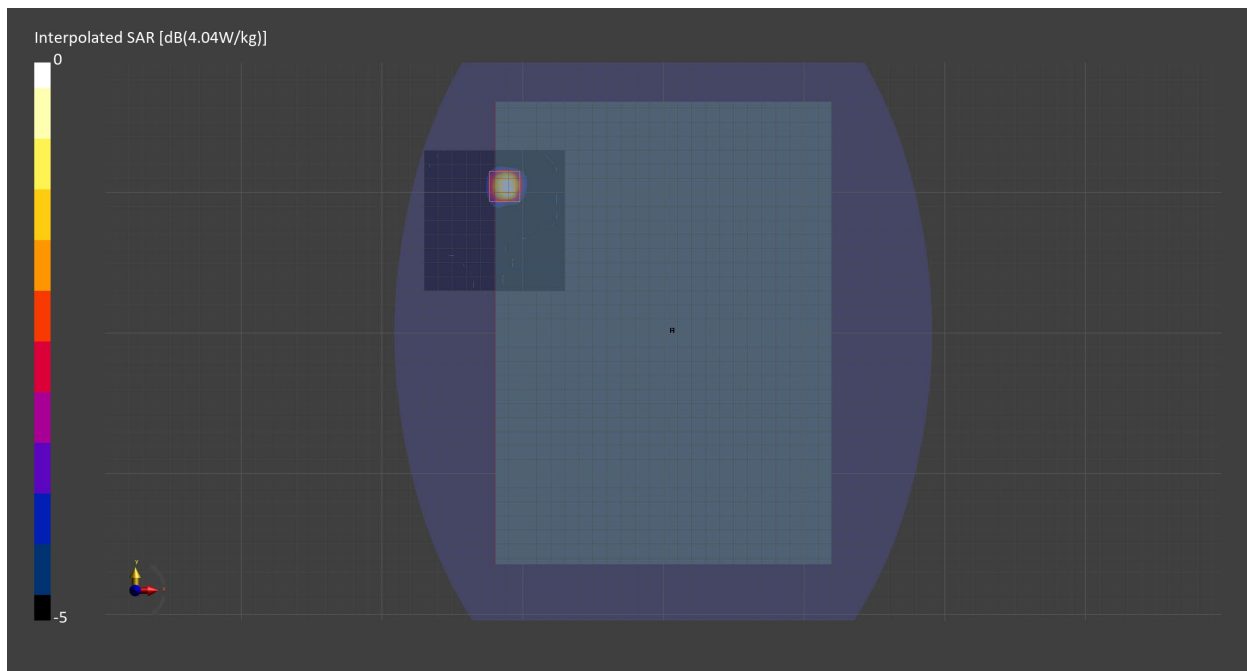
Probe Calibration Date	EX3DV4 - SN7710 2023-02-03	Phantom	ELI V5.0 (20deg probe tilt) - SN1196
DAE Calibration Date	DAE4 Sn1715 2023-01-23	TSL Meas. Date	HBBL-600-10000 2023-Dec-27

Scans Setup

	Area Scan	Zoom Scan
Grid Extents [mm]	100.0 x 100.0	22.0 x 22.0 x 22.0
Grid Steps [mm]	10.0 x 10.0	4.0 x 4.0 x 1.4
Sensor Surface [mm]	3.0	1.4
Graded Grid	N/A	Yes
M2/M1 [%]		59.2
Dist 3dB Peak [mm]		8.8

Measurement Results

	Area Scan	Zoom Scan
psSAR1g [W/Kg]	0.889	0.968
psSAR10g [W/Kg]	0.319	0.322
Power Drift [dB]	N/A	0.79



Measurement Report for Custom Band, EDGE BOTTOM, Chain 1

Exposure Conditions

Band	Custom Band	TSL Permittivity	34.3
Frequency [MHz] Channel Number	5815.000 5815000	TSL Conductivity [S/m]	5.25
Group UID	CW 10554-AAD	Phantom Section TSL	Flat HSL
Conversion Factor	5.51	Test Distance [mm]	0.00
Communication Configuration	IEEE 802.11ac WiFi (160MHz, MCS0, 99pc duty cycle)		

Hardware Setup

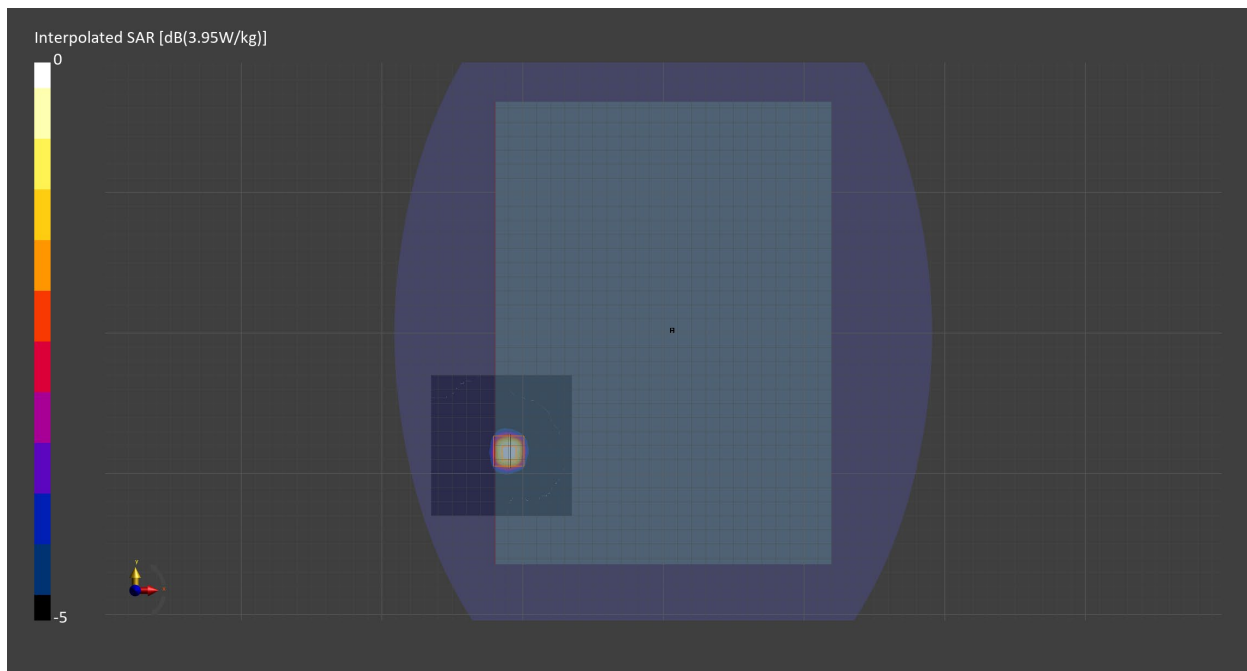
Probe Calibration Date	EX3DV4 - SN7710 2023-02-03	Phantom	ELI V5.0 (20deg probe tilt) - SN1196
DAE Calibration Date	DAE4 Sn1715 2023-01-23	TSL Meas. Date	HBBL-600-10000 2023-Dec-27

Scans Setup

	Area Scan	Zoom Scan
Grid Extents [mm]	100.0 x 100.0	22.0 x 22.0 x 22.0
Grid Steps [mm]	10.0 x 10.0	4.0 x 4.0 x 1.4
Sensor Surface [mm]	3.0	1.4
Graded Grid	N/A	Yes
M2/M1 [%]		59.9
Dist 3dB Peak [mm]		8.7

Measurement Results

	Area Scan	Zoom Scan
psSAR1g [W/Kg]	0.890	0.951
psSAR10g [W/Kg]	0.331	0.325
Power Drift [dB]	N/A	0.54



Measurement Report for WLAN 5GHz, BOTTOM, Chain 0

Exposure Conditions

Band	WLAN 5GHz	TSL Permittivity	35.0
Frequency [MHz] Channel Number	5785.000 157	TSL Conductivity [S/m]	5.18
Group UID	WLAN 10417-AAC	Phantom Section TSL	Flat HSL
Conversion Factor	5.28	Test Distance [mm]	0.00
Communication Configuration	IEEE 802.11a/h WiFi 5 GHz (OFDM, 6 Mbps, 99pc duty cycle)		

Hardware Setup

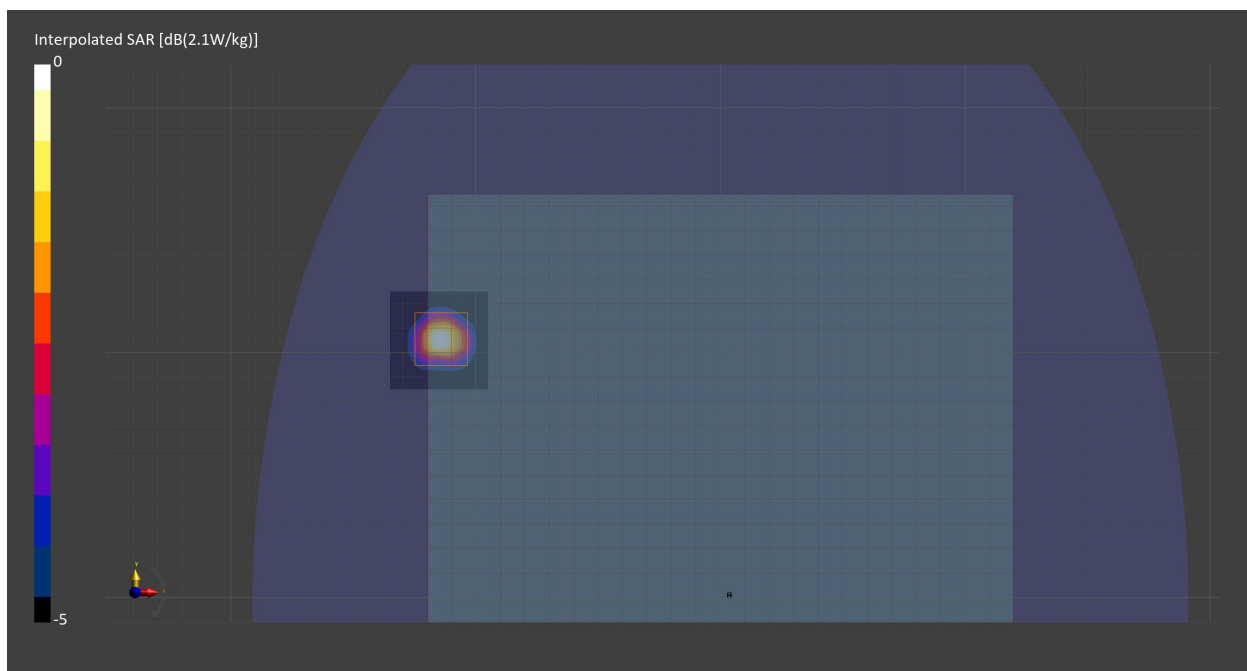
Probe Calibration Date	EX3DV4 - SN7711 2024-03-15	Phantom	ELI V5.0 (20deg probe tilt) - SN1196
DAE Calibration Date	DAE4 Sn1716 2024-03-13	TSL Meas. Date	HBBL600-10000V6 2024-Apr-16

Scans Setup

	Area Scan	Zoom Scan
Grid Extents [mm]	40.0 x 40.0	22.0 x 22.0 x 22.0
Grid Steps [mm]	10.0 x 10.0	4.0 x 4.0 x 1.4
Sensor Surface [mm]	3.0	1.4
Graded Grid	N/A	Yes
M2/M1 [%]		60.0
Dist 3dB Peak [mm]		8.8

Measurement Results

	Area Scan	Zoom Scan
psSAR1g [W/Kg]	0.484	0.515
psSAR10g [W/Kg]	0.165	0.168
Power Drift [dB]	0.07	0.18



Measurement Report for WLAN 5GHz, BOTTOM, Chain 1

Exposure Conditions

Band	WLAN 5GHz	TSL Permittivity	35.0
Frequency [MHz] Channel Number	5785.000 157	TSL Conductivity [S/m]	5.18
Group UID	WLAN 10417-AAC	Phantom Section TSL	Flat HSL
Conversion Factor	5.28	Test Distance [mm]	0.00
Communication Configuration	IEEE 802.11a/h WiFi 5 GHz (OFDM, 6 Mbps, 99pc duty cycle)		

Hardware Setup

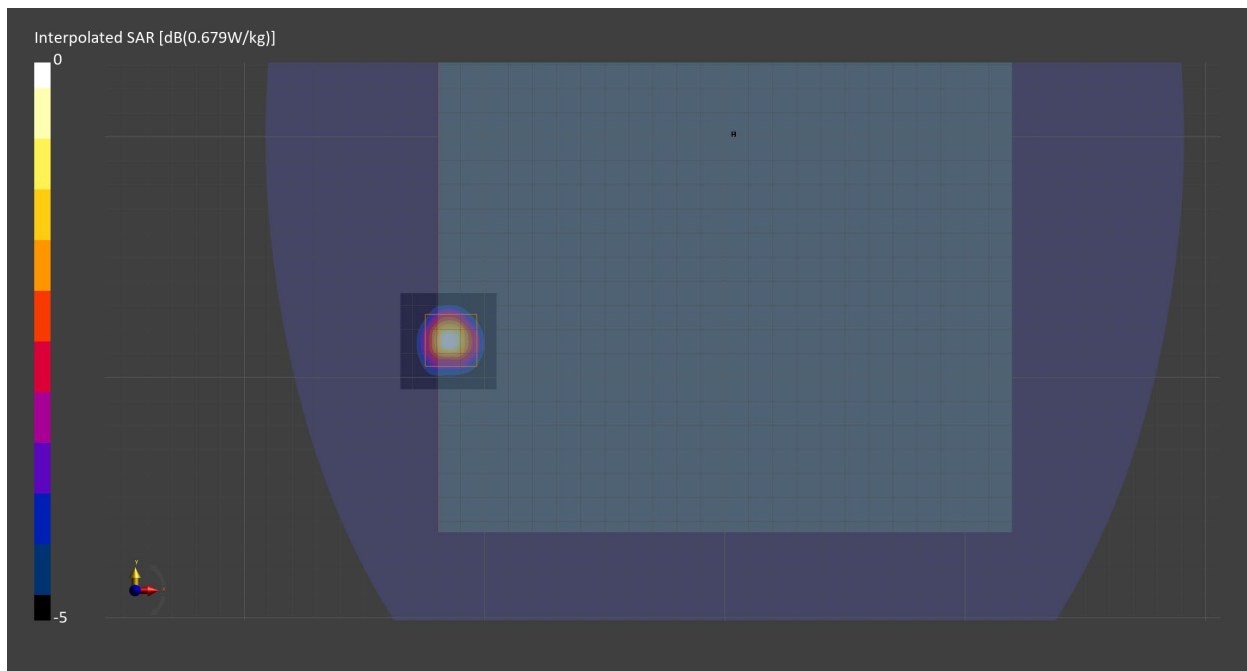
Probe Calibration Date	EX3DV4 - SN7711 2024-03-15	Phantom	ELI V5.0 (20deg probe tilt) - SN1196
DAE Calibration Date	DAE4 Sn1716 2024-03-13	TSL Meas. Date	HBBL600-10000V6 2024-Apr-16

Scans Setup

	Area Scan	Zoom Scan
Grid Extents [mm]	40.0 x 40.0	22.0 x 22.0 x 22.0
Grid Steps [mm]	10.0 x 10.0	4.0 x 4.0 x 1.4
Sensor Surface [mm]	3.0	1.4
Graded Grid	N/A	Yes
M2/M1 [%]		59.5
Dist 3dB Peak [mm]		9.6

Measurement Results

	Area Scan	Zoom Scan
psSAR1g [W/Kg]	0.458	0.483
psSAR10g [W/Kg]	0.159	0.161
Power Drift [dB]	-0.07	-0.01



Measurement Report for Custom Band, EDGE BOTTOM, Chain 0

Exposure Conditions

Band	Custom Band	TSL Permittivity	34.3
Frequency [MHz] Channel Number	6105.000 6105000	TSL Conductivity [S/m]	5.63
Group UID	CW 11026-AAA	Phantom Section TSL	Flat HSL
Conversion Factor	5.61	Test Distance [mm]	0.00
Communication Configuration	IEEE 802.11be (320MHz, MCS0, 99pc duty cycle)		

Hardware Setup

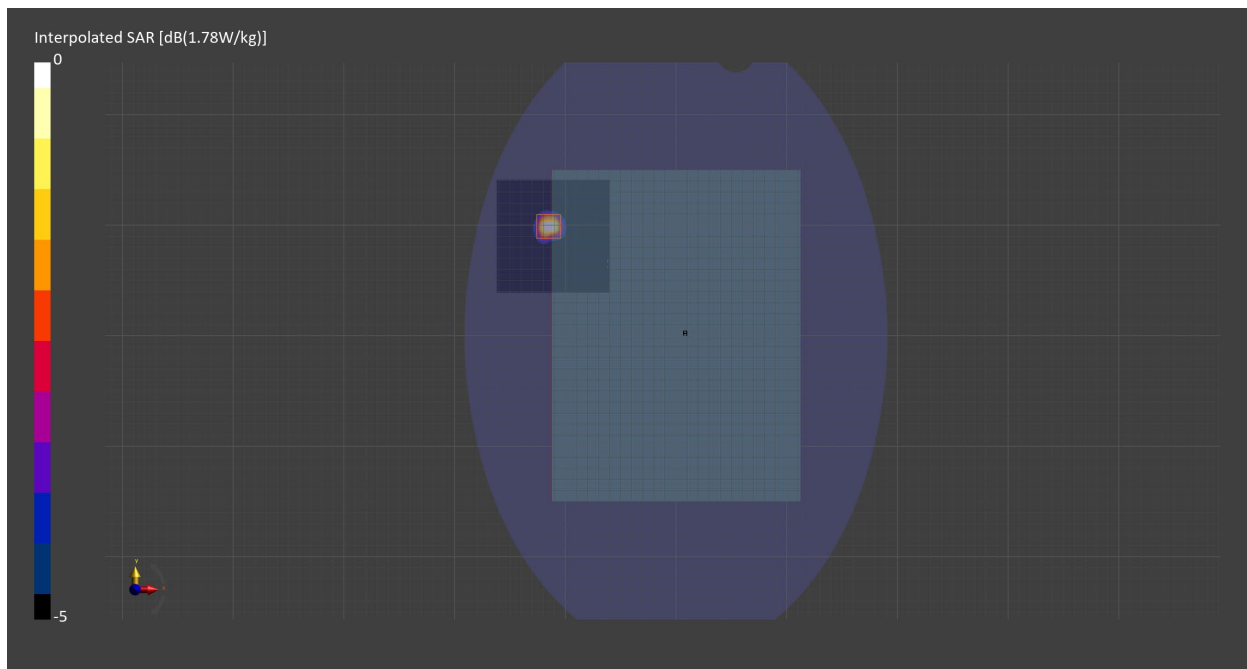
Probe Calibration Date	EX3DV4 - SN7711 2023-03-29	Phantom	ELI V8.0 (20deg probe tilt) - SN2081
DAE Calibration Date	DAE4 Sn1716 2023-03-16	TSL Meas. Date	HBBL600-10000V6 2024-Jan-23

Scans Setup

	Area Scan	Zoom Scan
Grid Extents [mm]	102.0 x 102.0	22.0 x 22.0 x 22.0
Grid Steps [mm]	8.5 x 8.5	3.4 x 3.4 x 1.4
Sensor Surface [mm]	3.0	1.4
Graded Grid	N/A	Yes
M2/M1 [%]		53.0
Dist 3dB Peak [mm]		8.9

Measurement Results

	Area Scan	Zoom Scan
psSAR1g [W/Kg]	0.435	0.416
psSAR10g [W/Kg]	0.154	0.141
Power Drift [dB]	N/A	0.01



Measurement Report for Custom Band, EDGE BOTTOM, Chain 1

Exposure Conditions

Band	Custom Band	TSL Permittivity	33.3
Frequency [MHz] Channel Number	6745.0 6745000	TSL Conductivity [S/m]	6.62
Group UID	CW 11026-AAA	Phantom Section TSL	Flat HSL
Conversion Factor	5.24	Test Distance [mm]	0.00
Communication Configuration	IEEE 802.11be (320MHz, MCS0, 99pc duty cycle)		

Hardware Setup

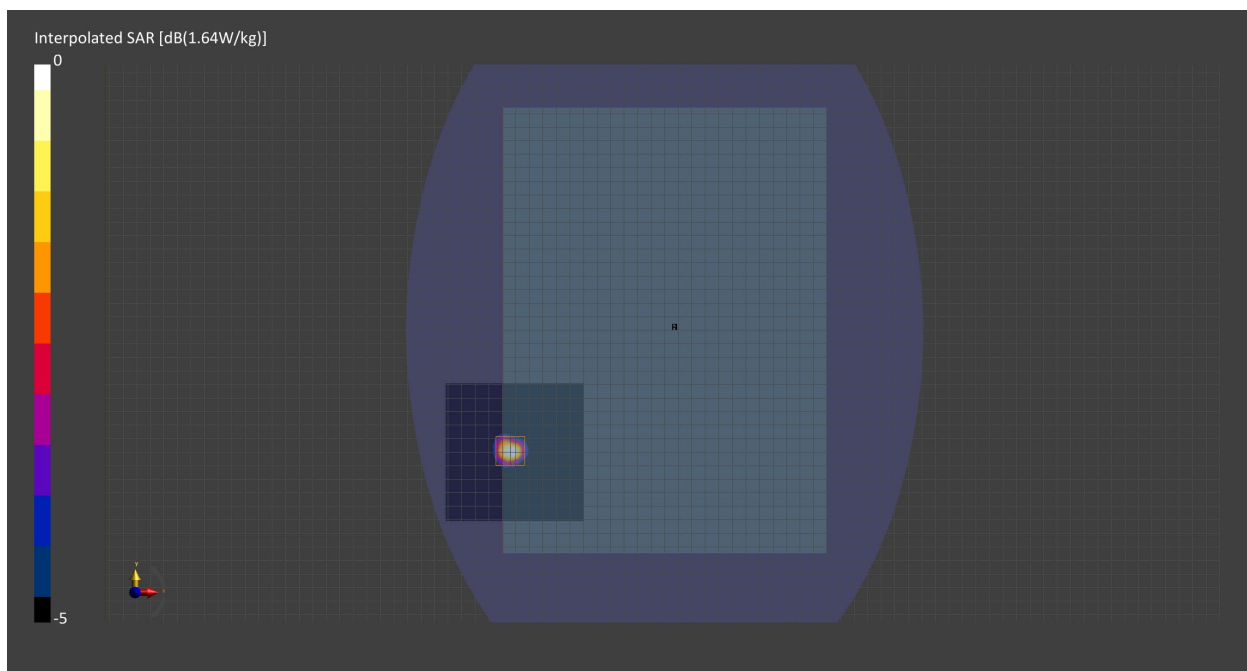
Probe Calibration Date	EX3DV4 - SN7710 2024-01-16	Phantom	ELI V8.0 (20deg probe tilt) - SN2081
DAE Calibration Date	DAE4 Sn1357 2024-01-09	TSL Meas. Date	HBBL600-10000V6 2024-Feb-16

Scans Setup

	Area Scan	Zoom Scan
Grid Extents [mm]	102.0 x 102.0	22.0 x 22.0 x 22.0
Grid Steps [mm]	8.5 x 8.5	3.4 x 3.4 x 1.4
Sensor Surface [mm]	3.0	1.4
Graded Grid	Yes	Yes
M2/M1 [%]		48.0
Dist 3dB Peak [mm]		8.2

Measurement Results

	Area Scan	Zoom Scan
psSAR1g [W/Kg]	0.306	0.323
psSAR10g [W/Kg]	0.10	0.103
Power Drift [dB]	n/a	-0.11



Measurement Report for ISM 2.4 GHz Band, EDGE BOTTOM, Chain 0

Exposure Conditions

Band	ISM 2.4 GHz Band	TSL Permittivity	40.5
Frequency [MHz] Channel Number	2402.000 0	TSL Conductivity [S/m]	1.76
Group UID	Bluetooth 10032-CAA	Phantom Section TSL	Flat HSL
Conversion Factor	7.66	Test Distance [mm]	0.00
Communication Configuration	IEEE 802.15.1 Bluetooth (GFSK, DH5)		

Hardware Setup

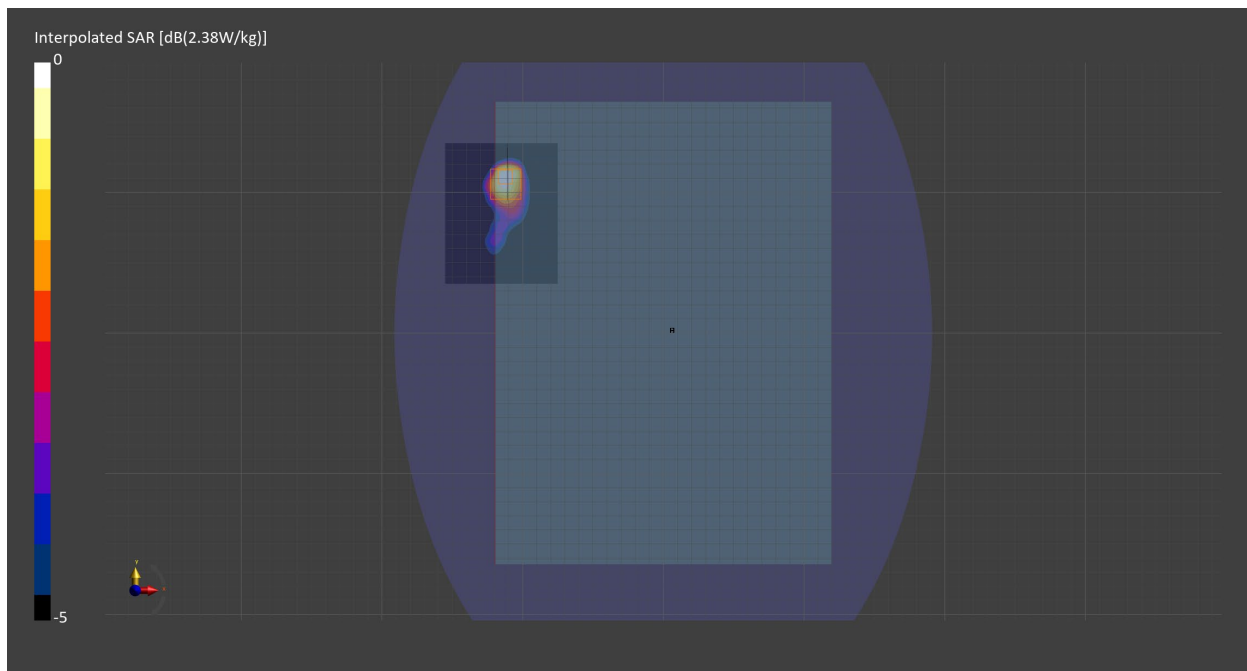
Probe Calibration Date	EX3DV4 - SN7709 2023-11-30	Phantom	ELI V8.0 (20deg probe tilt) - SN2160
DAE Calibration Date	DAE4 Sn1714 2023-11-22	TSL Meas. Date	HBBL-600-10000 2024-Jan-02

Scans Setup

	Area Scan	Zoom Scan
Grid Extents [mm]	80.0 x 100.0	30.0 x 30.0 x 30.0
Grid Steps [mm]	10.0 x 10.0	5.0 x 5.0 x 1.5
Sensor Surface [mm]	3.0	1.4
Graded Grid	N/A	Yes
M2/M1 [%]		74.8
Dist 3dB Peak [mm]		8.5

Measurement Results

	Area Scan	Zoom Scan
psSAR1g [W/Kg]	1.10	1.03
psSAR10g [W/Kg]	0.560	0.519
Power Drift [dB]	N/A	-0.86



Measurement Report for ISM 2.4 GHz Band, EDGE BOTTOM, Chain 1

Exposure Conditions

Band	ISM 2.4 GHz Band	TSL Permittivity	40.5
Frequency [MHz] Channel Number	2402.000 0	TSL Conductivity [S/m]	1.76
Group UID	Bluetooth 10032-CAA	Phantom Section TSL	Flat HSL
Conversion Factor	7.66	Test Distance [mm]	0.00
Communication Configuration	IEEE 802.15.1 Bluetooth (GFSK, DH5)		

Hardware Setup

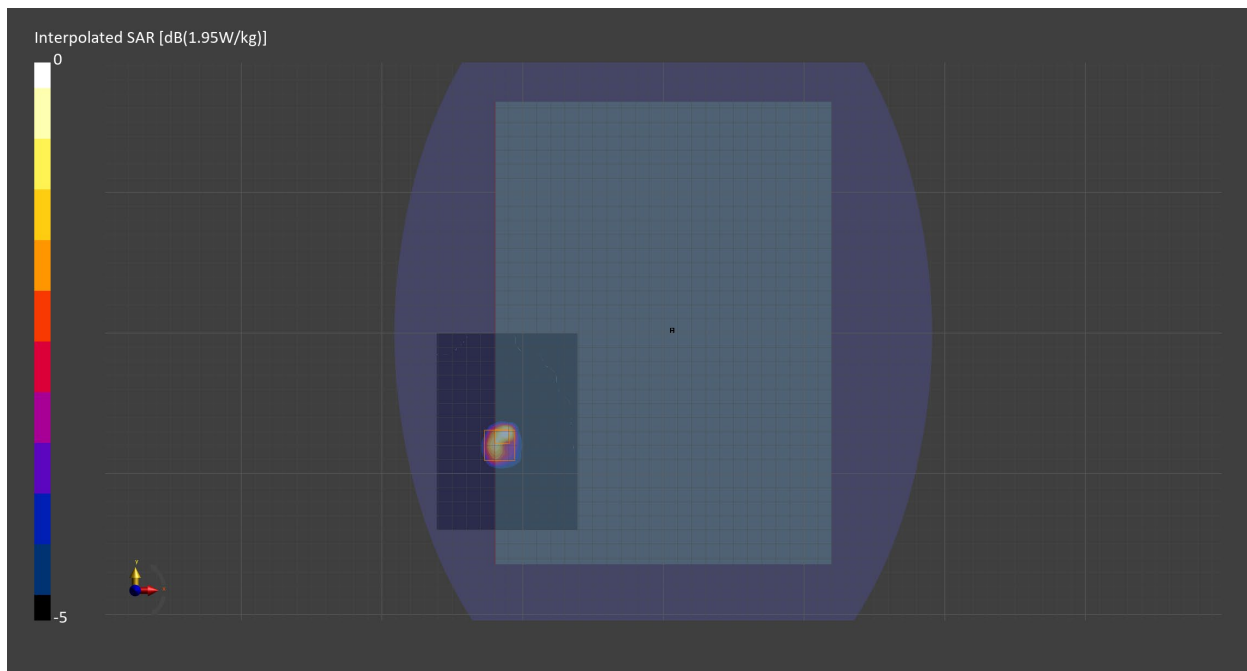
Probe Calibration Date	EX3DV4 - SN7709 2023-11-30	Phantom	ELI V8.0 (20deg probe tilt) - SN2160
DAE Calibration Date	DAE4 Sn1714 2023-11-22	TSL Meas. Date	HBBL-600-10000 2024-Jan-02

Scans Setup

	Area Scan	Zoom Scan
Grid Extents [mm]	100.0 x 140.0	30.0 x 30.0 x 30.0
Grid Steps [mm]	10.0 x 10.0	5.0 x 5.0 x 1.5
Sensor Surface [mm]	3.0	1.4
Graded Grid	N/A	Yes
M2/M1 [%]		72.5
Dist 3dB Peak [mm]		7.1

Measurement Results

	Area Scan	Zoom Scan
psSAR1g [W/Kg]	0.661	0.713
psSAR10g [W/Kg]	0.320	0.311
Power Drift [dB]	N/A	N/A



Measurement Report for ISM 2.4 GHz Band, EDGE BOTTOM, Chain 0

Exposure Conditions

Band	ISM 2.4 GHz Band	TSL Permittivity	40.4
Frequency [MHz] Channel Number	2441.000 39	TSL Conductivity [S/m]	1.79
Group UID	Bluetooth 10032-CAA	Phantom Section TSL	Flat HSL
Conversion Factor	7.66	Test Distance [mm]	0.00
Communication Configuration	IEEE 802.15.1 Bluetooth (GFSK, DH5)		

Hardware Setup

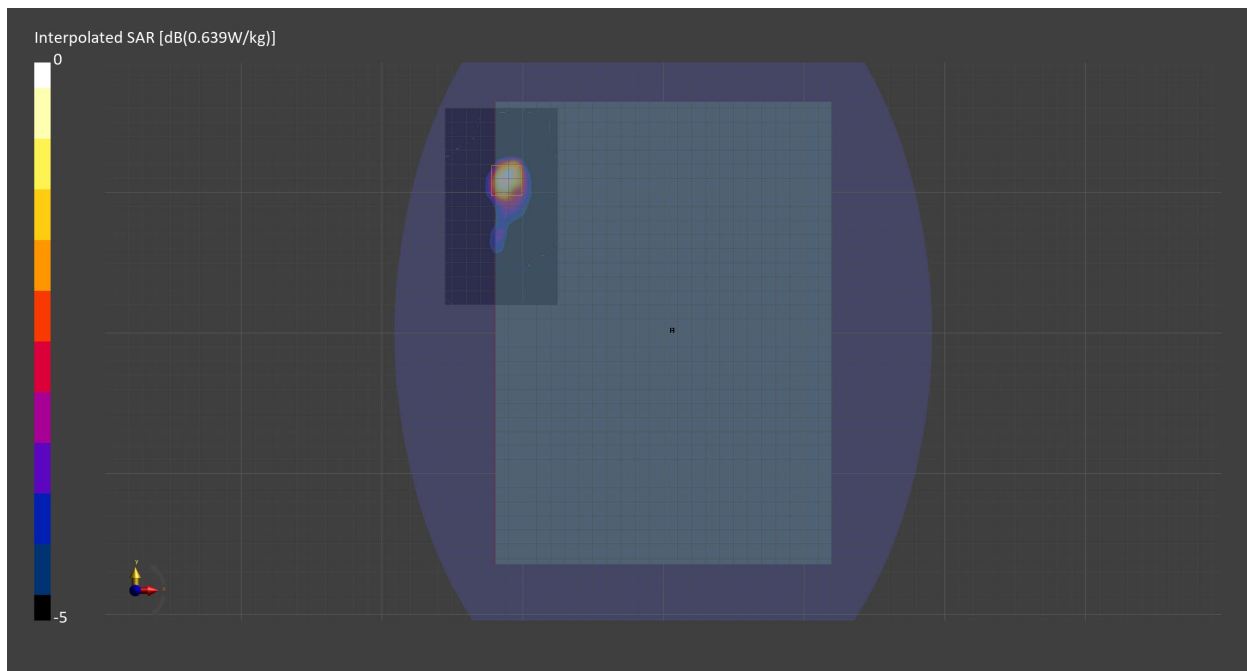
Probe Calibration Date	EX3DV4 - SN7709 2023-11-30	Phantom	ELI V8.0 (20deg probe tilt) - SN2160
DAE Calibration Date	DAE4 Sn1714 2023-11-22	TSL Meas. Date	HBBL-600-10000 2024-Jan-02

Scans Setup

	Area Scan	Zoom Scan
Grid Extents [mm]	80.0 x 140.0	30.0 x 30.0 x 30.0
Grid Steps [mm]	10.0 x 10.0	5.0 x 5.0 x 1.5
Sensor Surface [mm]	3.0	1.4
Graded Grid	N/A	Yes
M2/M1 [%]		75.4
Dist 3dB Peak [mm]		9.0

Measurement Results

	Area Scan	Zoom Scan
psSAR1g [W/Kg]	0.294	0.278
psSAR10g [W/Kg]	0.147	0.134
Power Drift [dB]	N/A	-0.47



Measurement Report for ISM 2.4 GHz Band, EDGE BOTTOM, Chain 1

Exposure Conditions

Band	ISM 2.4 GHz Band	TSL Permittivity	39.5
Frequency [MHz] Channel Number	2441.000 39	TSL Conductivity [S/m]	1.76
Group UID	Bluetooth 10032-CAA	Phantom Section TSL	Flat HSL
Conversion Factor	7.66	Test Distance [mm]	0.00
Communication Configuration	IEEE 802.15.1 Bluetooth (GFSK, DH5)		

Hardware Setup

Probe Calibration Date	EX3DV4 - SN7709 2023-11-30	Phantom	ELI V8.0 (20deg probe tilt) - SN2160
DAE Calibration Date	DAE4 Sn1714 2023-11-22	TSL Meas. Date	HBBL-600-10000 2024-Jan-08

Scans Setup

	Area Scan	Zoom Scan
Grid Extents [mm]	100.0 x 100.0	30.0 x 30.0 x 30.0
Grid Steps [mm]	10.0 x 10.0	5.0 x 5.0 x 1.5
Sensor Surface [mm]	3.0	1.4
Graded Grid	N/A	Yes
M2/M1 [%]		72.9
Dist 3dB Peak [mm]		7.3

Measurement Results

	Area Scan	Zoom Scan
psSAR1g [W/Kg]	0.282	0.277
psSAR10g [W/Kg]	0.135	0.124
Power Drift [dB]	N/A	-0.02

