

Measurement Report for WLAN 2.4GHz, EDGE BOTTOM, Chain 0

Exposure Conditions

Band	WLAN 2.4GHz	TSL Permittivity	38.1
Frequency [MHz] Channel Number	2437.000 6	TSL Conductivity [S/m]	1.75
Group UID	WLAN 10315-AAB	Phantom Section TSL	Flat HSL
Conversion Factor	8.05	Test Distance [mm]	0.00
Communication Configuration	IEEE 802.11b WiFi 2.4 GHz (DSSS, 1 Mbps, 96pc duty cycle)		

Hardware Setup

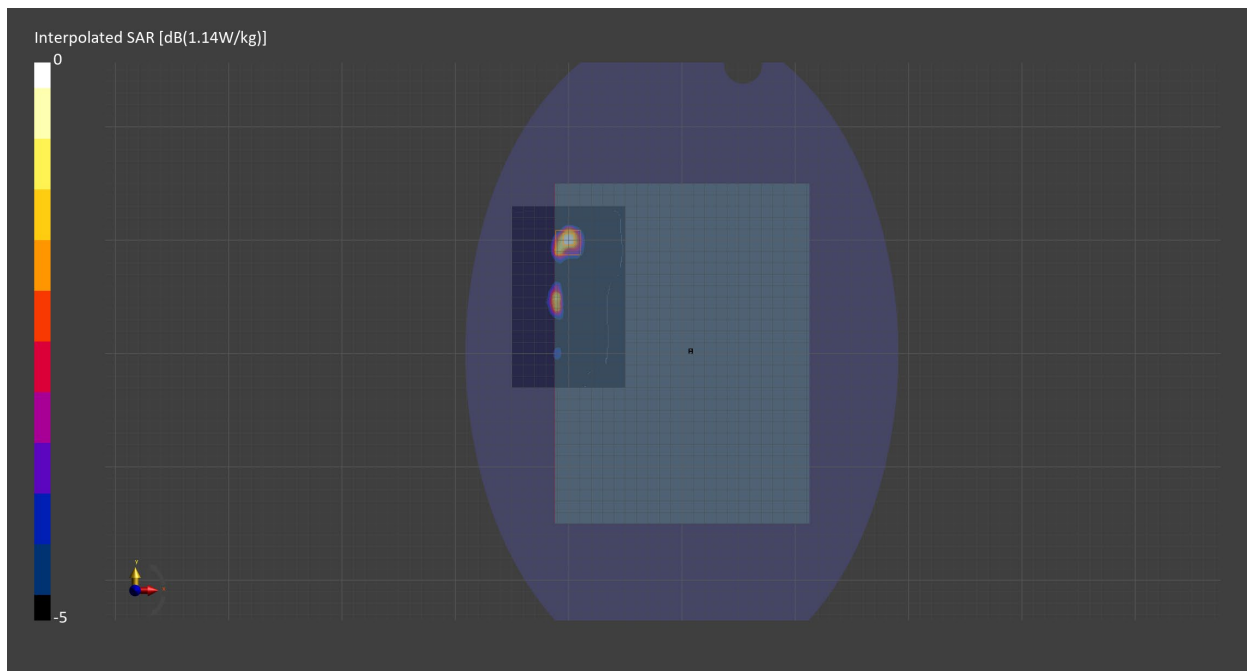
Probe Calibration Date	EX3DV4 - SN7710 2023-02-03	Phantom	ELI V8.0 (20deg probe tilt) - SN2160
DAE Calibration Date	DAE4 Sn1715 2023-01-23	TSL Meas. Date	HBBL-600-10000 2023-Dec-05

Scans Setup

	Area Scan	Zoom Scan
Grid Extents [mm]	100.0 x 160.0	30.0 x 30.0 x 30.0
Grid Steps [mm]	10.0 x 10.0	5.0 x 5.0 x 1.5
Sensor Surface [mm]	3.0	1.4
Graded Grid	N/A	Yes
M2/M1 [%]		74.0
Dist 3dB Peak [mm]		8.5

Measurement Results

	Area Scan	Zoom Scan
psSAR1g [W/Kg]	0.458	0.464
psSAR10g [W/Kg]	0.214	0.208
Power Drift [dB]	N/A	0.24



Measurement Report for WLAN 2.4GHz, EDGE BOTTOM, Chain 1

Exposure Conditions

Band	WLAN 2.4GHz	TSL Permittivity	38.1
Frequency [MHz] Channel Number	2437.000 6	TSL Conductivity [S/m]	1.75
Group UID	WLAN 10315-AAB	Phantom Section TSL	Flat HSL
Conversion Factor	8.05	Test Distance [mm]	0.00
Communication Configuration	IEEE 802.11b WiFi 2.4 GHz (DSSS, 1 Mbps, 96pc duty cycle)		

Hardware Setup

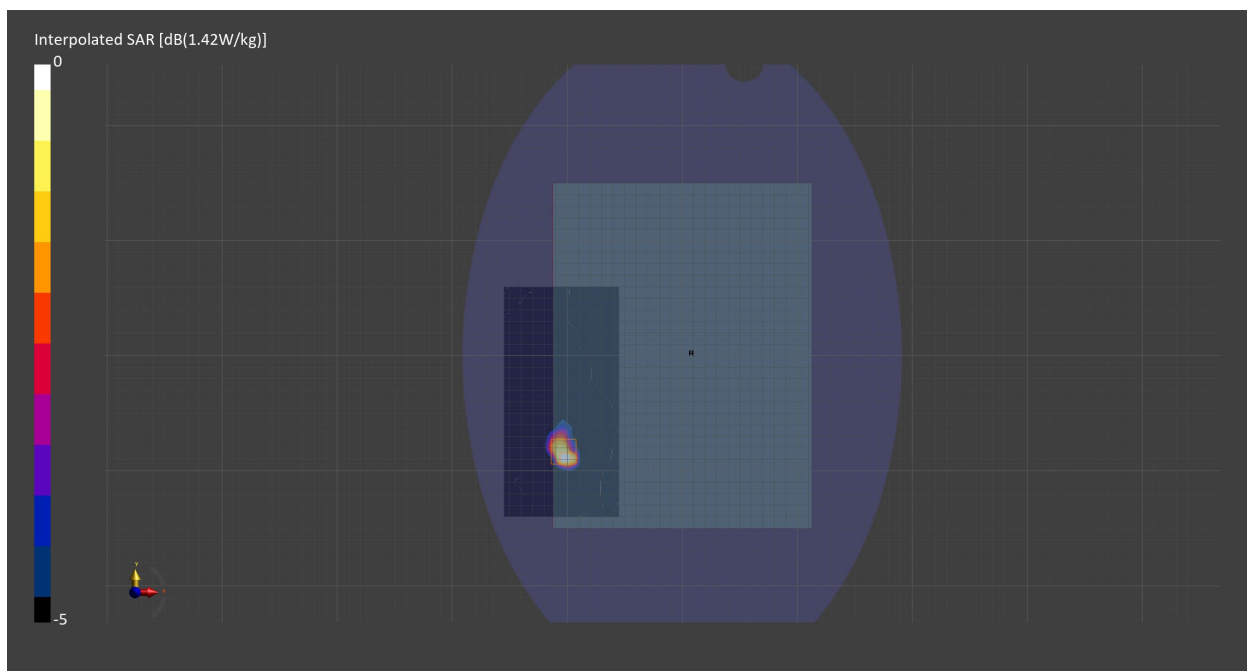
Probe Calibration Date	EX3DV4 - SN7710 2023-02-03	Phantom	ELI V8.0 (20deg probe tilt) - SN2160
DAE Calibration Date	DAE4 Sn1715 2023-01-23	TSL Meas. Date	HBBL-600-10000 2023-Dec-05

Scans Setup

	Area Scan	Zoom Scan
Grid Extents [mm]	100.0 x 200.0	30.0 x 30.0 x 30.0
Grid Steps [mm]	10.0 x 10.0	5.0 x 5.0 x 1.5
Sensor Surface [mm]	3.0	1.4
Graded Grid	N/A	Yes
M2/M1 [%]		71.5
Dist 3dB Peak [mm]		6.5

Measurement Results

	Area Scan	Zoom Scan
psSAR1g [W/Kg]	0.634	0.516
psSAR10g [W/Kg]	0.298	0.235
Power Drift [dB]	N/A	-0.10



Measurement Report for U-NII-1, U-NII-2A, EDGE BOTTOM, Chain 0

Exposure Conditions

Band	U-NII-1, U-NII-2A	TSL Permittivity	35.3
Frequency [MHz] Channel Number	5250.000 50	TSL Conductivity [S/m]	4.57
Group UID	WLAN 10636-AAD	Phantom Section TSL	Flat HSL
Conversion Factor	6.01	Test Distance [mm]	0.00
Communication Configuration	IEEE 802.11ac WiFi (160MHz, MCS0, 90pc duty cycle)		

Hardware Setup

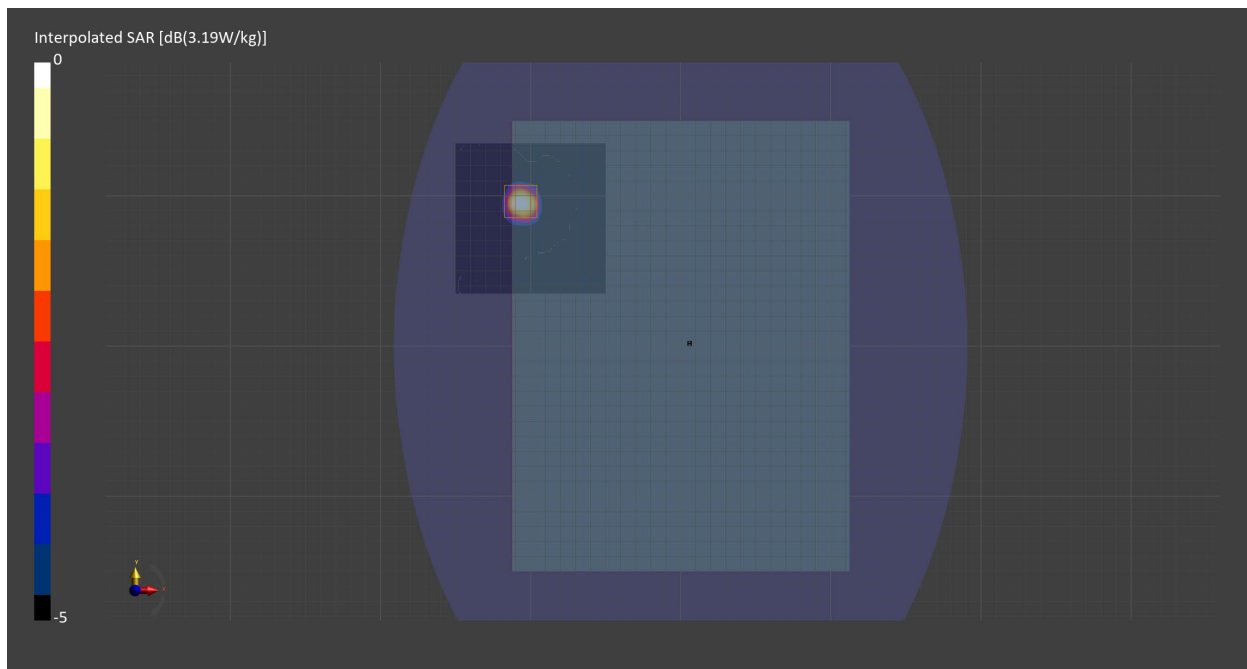
Probe Calibration Date	EX3DV4 - SN7711 2023-03-29	Phantom	ELI V5.0 (20deg probe tilt) - SN1196
DAE Calibration Date	DAE4 Sn1716 2023-03-16	TSL Meas. Date	HBBL-600-10000 2023-Dec-11

Scans Setup

	Area Scan	Zoom Scan
Grid Extents [mm]	100.0 x 100.0	22.0 x 22.0 x 22.0
Grid Steps [mm]	10.0 x 10.0	4.0 x 4.0 x 1.4
Sensor Surface [mm]	3.0	1.4
Graded Grid	N/A	Yes
M2/M1 [%]		63.0
Dist 3dB Peak [mm]		9.4

Measurement Results

	Area Scan	Zoom Scan
psSAR1g [W/Kg]	0.822	0.856
psSAR10g [W/Kg]	0.295	0.296
Power Drift [dB]	N/A	-0.11



Measurement Report for U-NII-1, U-NII-2A, EDGE BOTTOM, Chain 1

Exposure Conditions

Band	U-NII-1, U-NII-2A	TSL Permittivity	35.3
Frequency [MHz] Channel Number	5250.000 50	TSL Conductivity [S/m]	4.57
Group UID	WLAN 10636-AAD	Phantom Section TSL	Flat HSL
Conversion Factor	6.01	Test Distance [mm]	0.00
Communication Configuration	IEEE 802.11ac WiFi (160MHz, MCS0, 90pc duty cycle)		

Hardware Setup

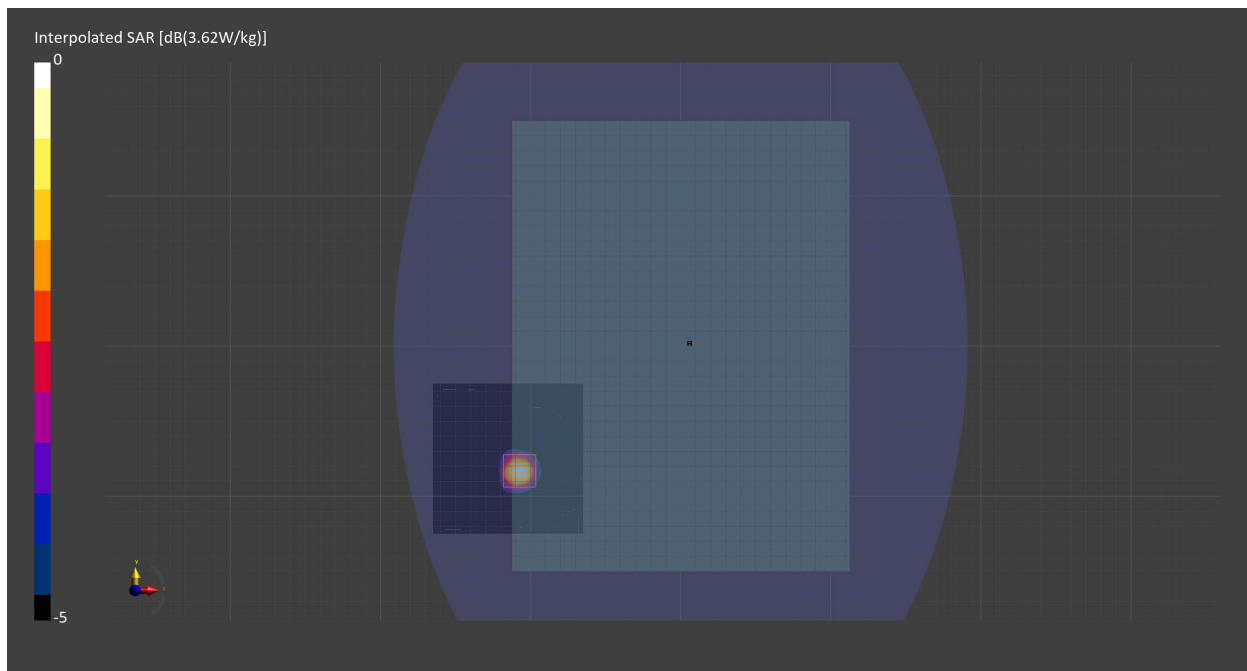
Probe Calibration Date	EX3DV4 - SN7711 2023-03-29	Phantom	ELI V5.0 (20deg probe tilt) - SN1196
DAE Calibration Date	DAE4 Sn1716 2023-03-16	TSL Meas. Date	HBBL-600-10000 2023-Dec-11

Scans Setup

	Area Scan	Zoom Scan
Grid Extents [mm]	100.0 x 100.0	22.0 x 22.0 x 22.0
Grid Steps [mm]	10.0 x 10.0	4.0 x 4.0 x 1.4
Sensor Surface [mm]	3.0	1.4
Graded Grid	N/A	Yes
M2/M1 [%]		63.3
Dist 3dB Peak [mm]		10.2

Measurement Results

	Area Scan	Zoom Scan
psSAR1g [W/Kg]	0.946	0.992
psSAR10g [W/Kg]	0.343	0.349
Power Drift [dB]	N/A	0.11



Measurement Report for U-NII-2C Standalone, EDGE BOTTOM, Chain 0

Exposure Conditions

Band	U-NII-2C Standalone	TSL Permittivity	34.2
Frequency [MHz] Channel Number	5570.000 114	TSL Conductivity [S/m]	4.83
Group UID	WLAN 10636-AAD	Phantom Section TSL	Flat HSL
Conversion Factor	4.98	Test Distance [mm]	0.00
Communication Configuration	IEEE 802.11ac WiFi (160MHz, MCS0, 90pc duty cycle)		

Hardware Setup

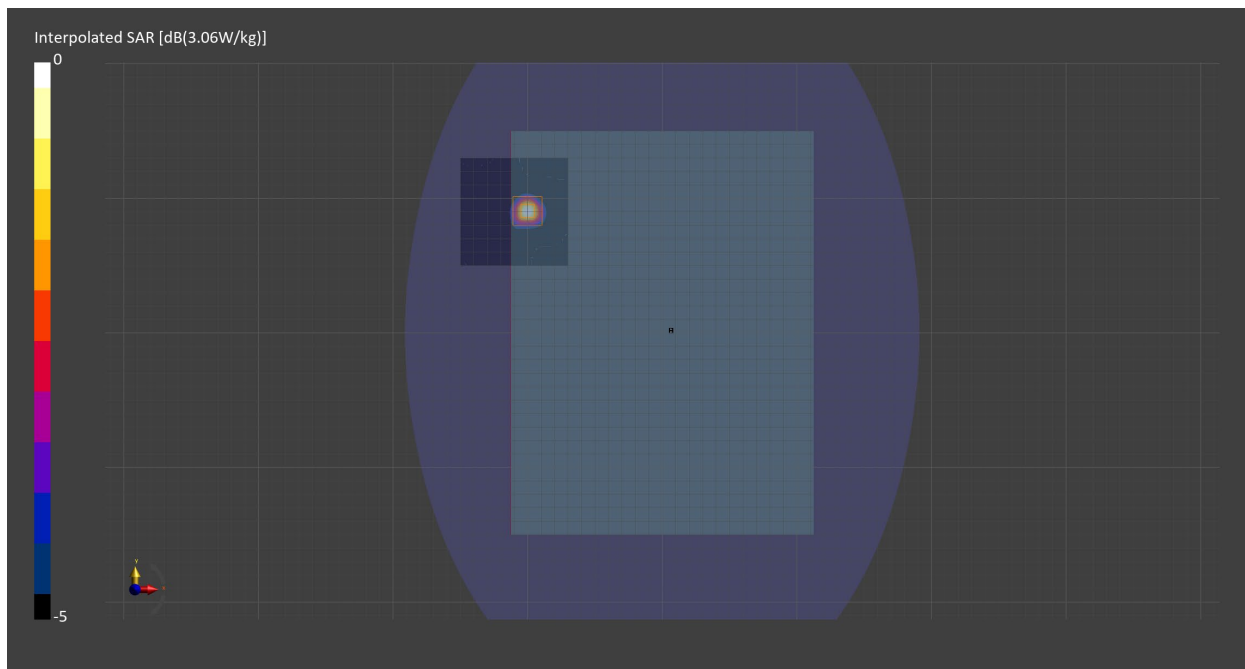
Probe Calibration Date	EX3DV4 - SN7709 2023-11-30	Phantom	ELI V8.0 (20deg probe tilt) - SN2160
DAE Calibration Date	DAE4 Sn1714 2023-11-22	TSL Meas. Date	HBBL-600-10000 2024-Jan-08

Scans Setup

	Area Scan	Zoom Scan
Grid Extents [mm]	80.0 x 80.0	22.0 x 22.0 x 22.0
Grid Steps [mm]	10.0 x 10.0	4.0 x 4.0 x 1.4
Sensor Surface [mm]	3.0	1.4
Graded Grid	N/A	Yes
M2/M1 [%]		64.5
Dist 3dB Peak [mm]		9.4

Measurement Results

	Area Scan	Zoom Scan
psSAR1g [W/Kg]	0.867	0.842
psSAR10g [W/Kg]	0.293	0.283
Power Drift [dB]	N/A	0.01



Measurement Report for U-NII-2C Standalone, EDGE BOTTOM, Chain 1

Exposure Conditions

Band	U-NII-2C Standalone	TSL Permittivity	34.2
Frequency [MHz] Channel Number	5570.000 114	TSL Conductivity [S/m]	4.83
Group UID	WLAN 10636-AAD	Phantom Section TSL	Flat HSL
Conversion Factor	4.98	Test Distance [mm]	0.00
Communication Configuration	IEEE 802.11ac WiFi (160MHz, MCS0, 90pc duty cycle)		

Hardware Setup

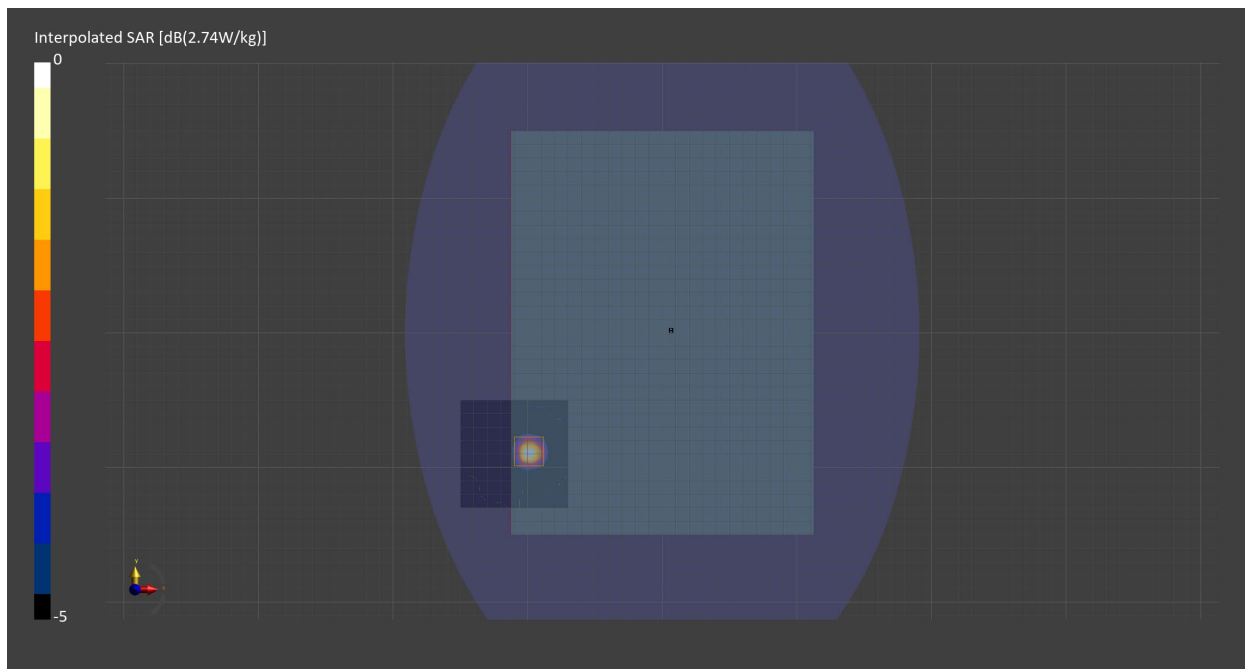
Probe Calibration Date	EX3DV4 - SN7709 2023-11-30	Phantom	ELI V8.0 (20deg probe tilt) - SN2160
DAE Calibration Date	DAE4 Sn1714 2023-11-22	TSL Meas. Date	HBBL-600-10000 2024-Jan-08

Scans Setup

	Area Scan	Zoom Scan
Grid Extents [mm]	80.0 x 80.0	22.0 x 22.0 x 22.0
Grid Steps [mm]	10.0 x 10.0	4.0 x 4.0 x 1.4
Sensor Surface [mm]	3.0	1.4
Graded Grid	N/A	Yes
M2/M1 [%]		64.3
Dist 3dB Peak [mm]		8.8

Measurement Results

	Area Scan	Zoom Scan
psSAR1g [W/Kg]	0.766	0.754
psSAR10g [W/Kg]	0.260	0.252
Power Drift [dB]	N/A	0.05



Measurement Report for Custom Band, EDGE BOTTOM, Chain 0

Exposure Conditions

Band	Custom Band	TSL Permittivity	34.7
Frequency [MHz] Channel Number	5815.000 5815000	TSL Conductivity [S/m]	5.12
Group UID	CW 10554-AAD	Phantom Section TSL	Flat HSL
Conversion Factor	5.28	Test Distance [mm]	0.00
Communication Configuration	IEEE 802.11ac WiFi (160MHz, MCS0, 99pc duty cycle)		

Hardware Setup

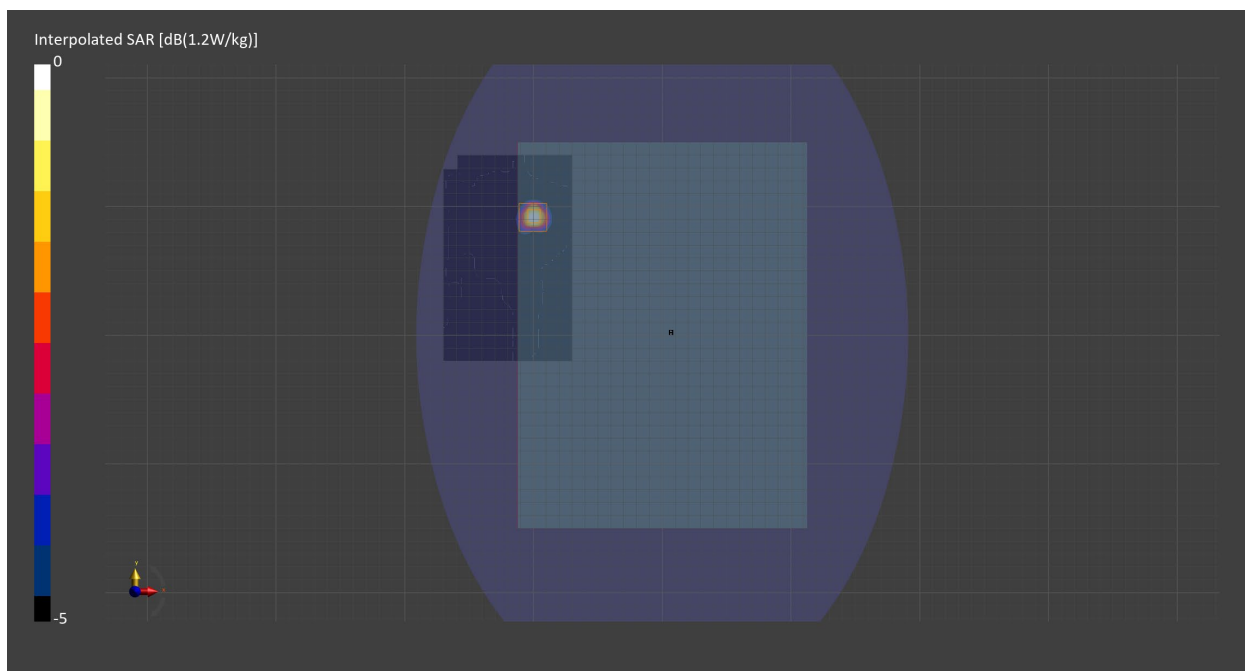
Probe Calibration Date	EX3DV4 - SN7711 2023-03-29	Phantom	ELI V8.0 (20deg probe tilt) - SN2160
DAE Calibration Date	DAE4 Sn1716 2023-03-16	TSL Meas. Date	HBBL-600-10000 2024-Jan-16

Scans Setup

	Area Scan	Zoom Scan
Grid Extents [mm]	100.0 x 160.0	22.0 x 22.0 x 22.0
Grid Steps [mm]	10.0 x 10.0	4.0 x 4.0 x 1.4
Sensor Surface [mm]	3.0	1.4
Graded Grid	N/A	Yes
M2/M1 [%]		60.2
Dist 3dB Peak [mm]		9.4

Measurement Results

	Area Scan	Zoom Scan
psSAR1g [W/Kg]	0.844	0.913
psSAR10g [W/Kg]	0.291	0.306
Power Drift [dB]	N/A	0.13



Measurement Report for Custom Band, EDGE BOTTOM, Chain 1

Exposure Conditions

Band	Custom Band	TSL Permittivity	34.3
Frequency [MHz] Channel Number	5815.000 5815000	TSL Conductivity [S/m]	5.21
Group UID	CW 10554-AAD	Phantom Section TSL	Flat HSL
Conversion Factor	5.28	Test Distance [mm]	0.00
Communication Configuration	IEEE 802.11ac WiFi (160MHz, MCS0, 99pc duty cycle)		

Hardware Setup

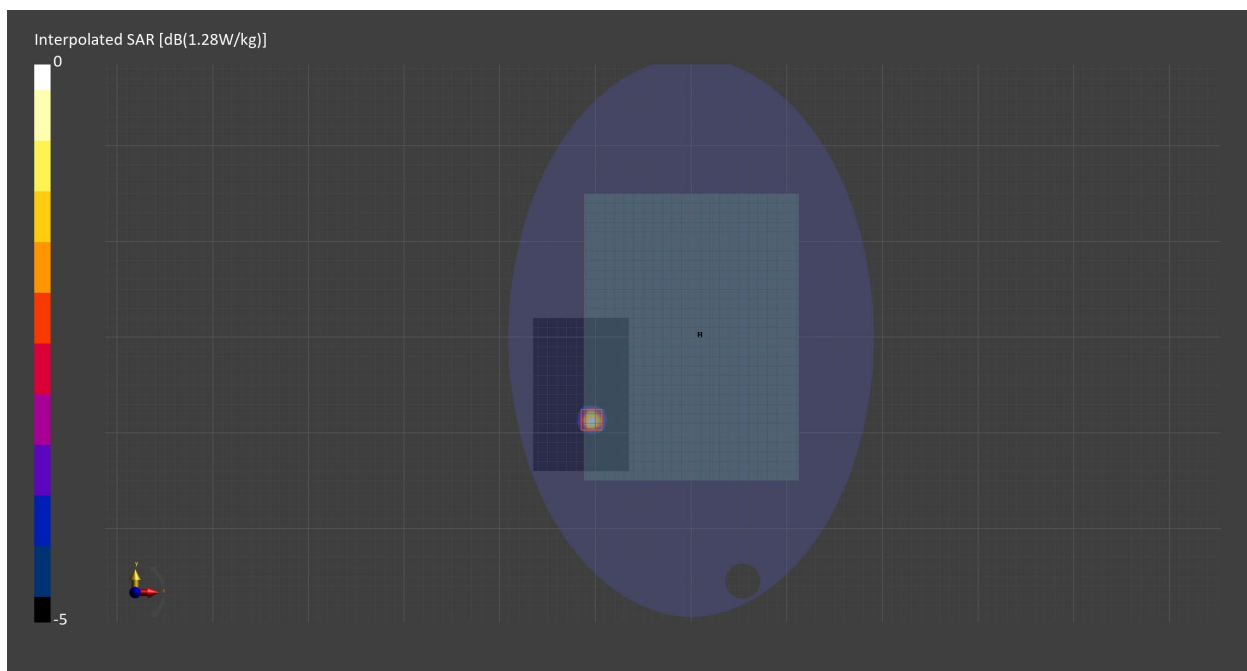
Probe Calibration Date	EX3DV4 - SN7711 2023-03-29	Phantom	ELI V5.0 (20deg probe tilt) - SN1196
DAE Calibration Date	DAE4 Sn1716 2023-03-16	TSL Meas. Date	HBBL-600-10000 2023-Dec-11

Scans Setup

	Area Scan	Zoom Scan
Grid Extents [mm]	100.0 x 160.0	22.0 x 22.0 x 22.0
Grid Steps [mm]	10.0 x 10.0	4.0 x 4.0 x 1.4
Sensor Surface [mm]	3.0	1.4
Graded Grid	N/A	Yes
M2/M1 [%]		59.9
Dist 3dB Peak [mm]		9.6

Measurement Results

	Area Scan	Zoom Scan
psSAR1g [W/Kg]	0.919	1.02
psSAR10g [W/Kg]	0.333	0.393
Power Drift [dB]	N/A	-1.49



Measurement Report for WLAN 5GHz, BOTTOM, Chain 0

Exposure Conditions

Band	WLAN 5GHz	TSL Permittivity	35.0
Frequency [MHz] Channel Number	5785.000 157	TSL Conductivity [S/m]	5.18
Group UID	WLAN 10417-AAC	Phantom Section TSL	Flat HSL
Conversion Factor	5.28	Test Distance [mm]	0.00
Communication Configuration	IEEE 802.11a/h WiFi 5 GHz (OFDM, 6 Mbps, 99pc duty cycle)		

Hardware Setup

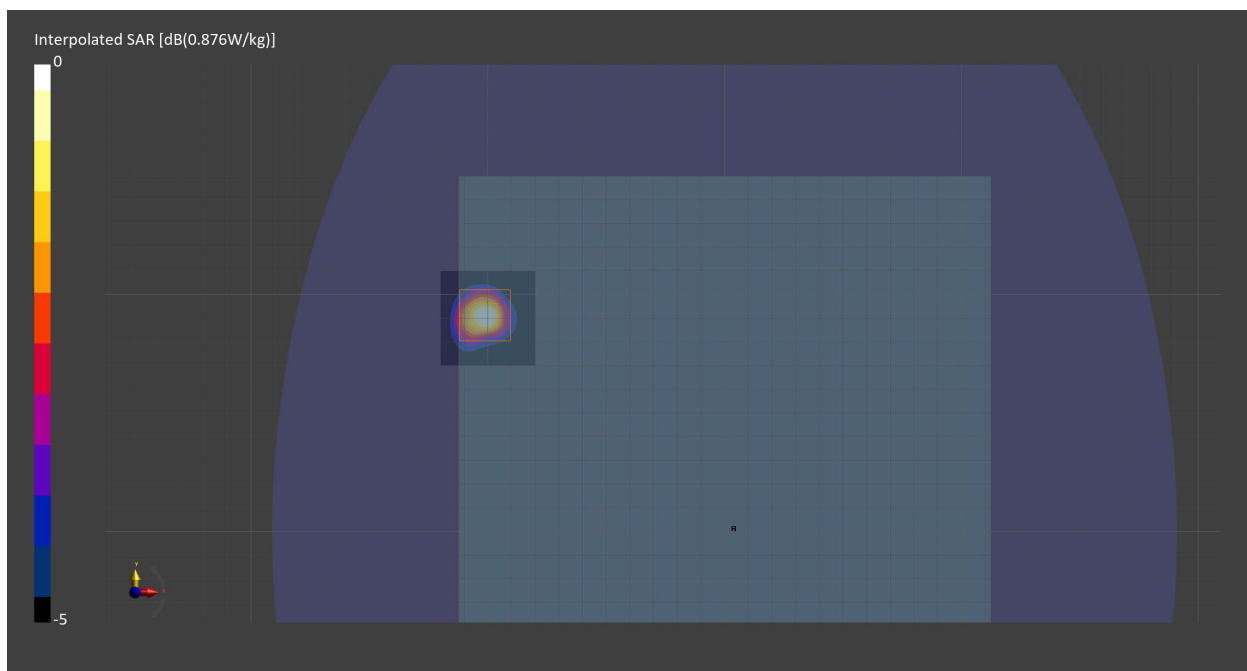
Probe Calibration Date	EX3DV4 - SN7711 2024-03-15	Phantom	ELI V5.0 (20deg probe tilt) - SN1196
DAE Calibration Date	DAE4 Sn1716 2024-03-13	TSL Meas. Date	HBBL600-10000V6 2024-Apr-16

Scans Setup

	Area Scan	Zoom Scan
Grid Extents [mm]	40.0 x 40.0	22.0 x 22.0 x 22.0
Grid Steps [mm]	10.0 x 10.0	4.0 x 4.0 x 1.4
Sensor Surface [mm]	3.0	1.4
Graded Grid	N/A	Yes
M2/M1 [%]		59.6
Dist 3dB Peak [mm]		9.6

Measurement Results

	Area Scan	Zoom Scan
psSAR1g [W/Kg]	0.601	0.639
psSAR10g [W/Kg]	0.208	0.213
Power Drift [dB]	-0.03	0.12



Measurement Report for WLAN 5GHz, BOTTOM, Chain 1

Exposure Conditions

Band	WLAN 5GHz	TSL Permittivity	35.0
Frequency [MHz] Channel Number	5785.000 157	TSL Conductivity [S/m]	5.18
Group UID	WLAN 10417-AAC	Phantom Section TSL	Flat HSL
Conversion Factor	5.28	Test Distance [mm]	0.00
Communication Configuration	IEEE 802.11a/h WiFi 5 GHz (OFDM, 6 Mbps, 99pc duty cycle)		

Hardware Setup

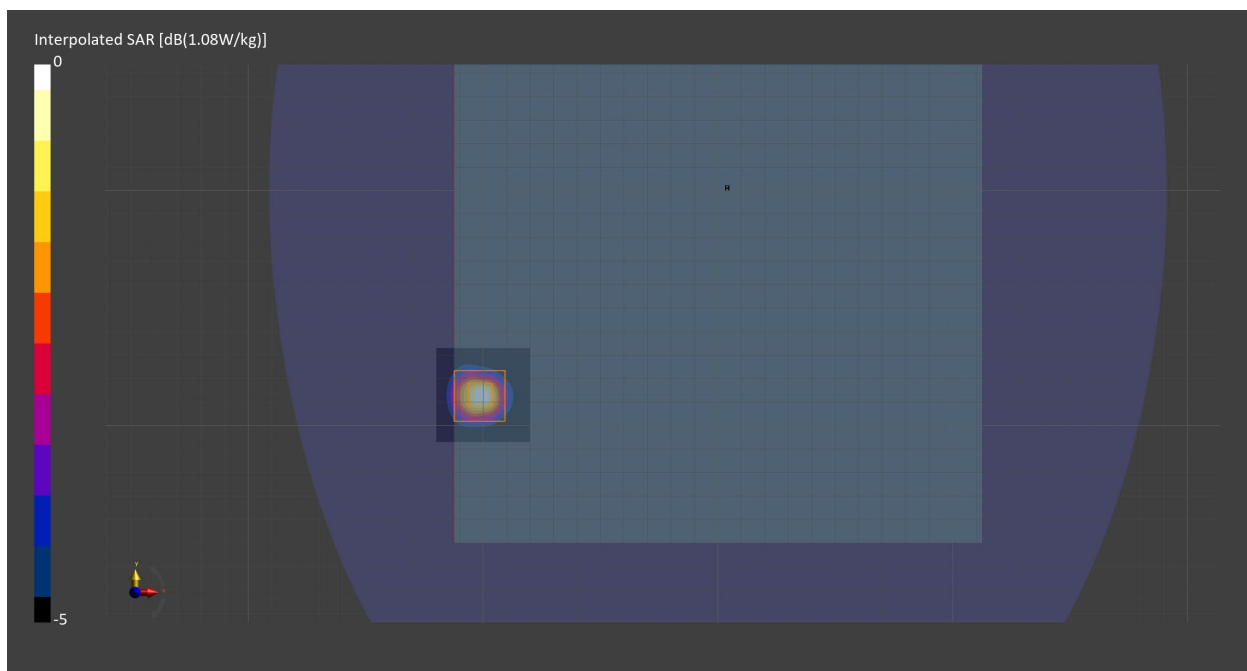
Probe Calibration Date	EX3DV4 - SN7711 2024-03-15	Phantom	ELI V5.0 (20deg probe tilt) - SN1196
DAE Calibration Date	DAE4 Sn1716 2024-03-13	TSL Meas. Date	HBBL600-10000V6 2024-Apr-16

Scans Setup

	Area Scan	Zoom Scan
Grid Extents [mm]	40.0 x 40.0	22.0 x 22.0 x 22.0
Grid Steps [mm]	10.0 x 10.0	4.0 x 4.0 x 1.4
Sensor Surface [mm]	3.0	1.4
Graded Grid	N/A	Yes
M2/M1 [%]		59.9
Dist 3dB Peak [mm]		8.9

Measurement Results

	Area Scan	Zoom Scan
psSAR1g [W/Kg]	0.729	0.773
psSAR10g [W/Kg]	0.250	0.257
Power Drift [dB]	0.03	-0.08



Measurement Report for Custom Band, EDGE BOTTOM, Chain 0

Exposure Conditions

Band	Custom Band	TSL Permittivity	34.3
Frequency [MHz] Channel Number	6105.000 6105000	TSL Conductivity [S/m]	5.63
Group UID	CW 11026-AAA	Phantom Section TSL	Flat HSL
Conversion Factor	5.61	Test Distance [mm]	0.00
Communication Configuration	IEEE 802.11be (320MHz, MCS0, 99pc duty cycle)		

Hardware Setup

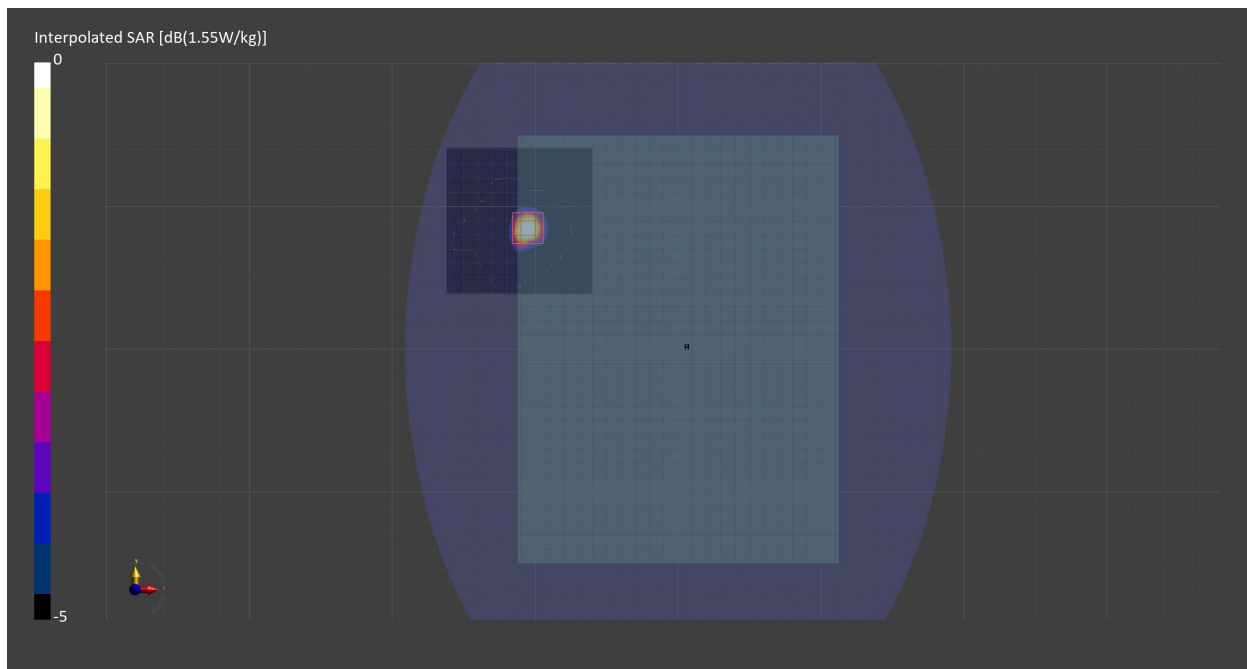
Probe Calibration Date	EX3DV4 - SN7711 2023-03-29	Phantom	ELI V8.0 (20deg probe tilt) - SN2081
DAE Calibration Date	DAE4 Sn1716 2023-03-16	TSL Meas. Date	HBBL600-10000V6 2024-Jan-23

Scans Setup

	Area Scan	Zoom Scan
Grid Extents [mm]	102.0 x 102.0	22.0 x 22.0 x 22.0
Grid Steps [mm]	8.5 x 8.5	3.4 x 3.4 x 1.4
Sensor Surface [mm]	3.0	1.4
Graded Grid	N/A	Yes
M2/M1 [%]		52.1
Dist 3dB Peak [mm]		9.8

Measurement Results

	Area Scan	Zoom Scan
psSAR1g [W/Kg]	0.339	0.365
psSAR10g [W/Kg]	0.120	0.125
Power Drift [dB]	N/A	0.11



Measurement Report for Custom Band, EDGE BOTTOM, Chain 1

Exposure Conditions

Band	Custom Band	TSL Permittivity	33.2
Frequency [MHz] Channel Number	6745.000 6745000	TSL Conductivity [S/m]	6.38
Group UID	CW 11026-AAA	Phantom Section TSL	Flat HSL
Conversion Factor	5.61	Test Distance [mm]	0.00
Communication Configuration	IEEE 802.11be (320MHz, MCS0, 99pc duty cycle)		

Hardware Setup

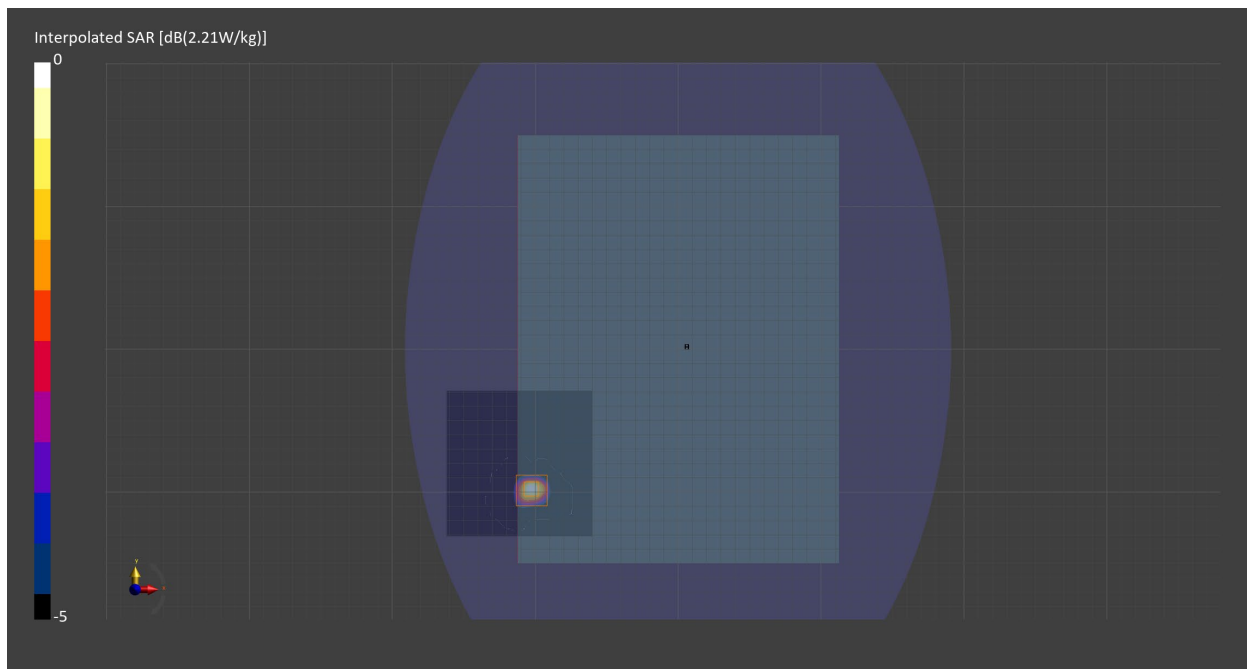
Probe Calibration Date	EX3DV4 - SN7711 2023-03-29	Phantom	ELI V8.0 (20deg probe tilt) - SN2081
DAE Calibration Date	DAE4 Sn1716 2023-03-16	TSL Meas. Date	HBBL600-10000V6 2024-Jan-23

Scans Setup

	Area Scan	Zoom Scan
Grid Extents [mm]	102.0 x 102.0	22.0 x 22.0 x 22.0
Grid Steps [mm]	8.5 x 8.5	3.4 x 3.4 x 1.4
Sensor Surface [mm]	3.0	1.4
Graded Grid	N/A	Yes
M2/M1 [%]		51.3
Dist 3dB Peak [mm]		6.7

Measurement Results

	Area Scan	Zoom Scan
psSAR1g [W/Kg]	0.449	0.456
psSAR10g [W/Kg]	0.147	0.147
Power Drift [dB]	N/A	0.14



Measurement Report for ISM 2.4 GHz Band, EDGE BOTTOM, Chain 0

Exposure Conditions

Band	ISM 2.4 GHz Band	TSL Permittivity	40.4
Frequency [MHz] Channel Number	2441.000 39	TSL Conductivity [S/m]	1.79
Group UID	Bluetooth 10032-CAA	Phantom Section TSL	Flat HSL
Conversion Factor	7.66	Test Distance [mm]	0.00
Communication Configuration	IEEE 802.15.1 Bluetooth (GFSK, DH5)		

Hardware Setup

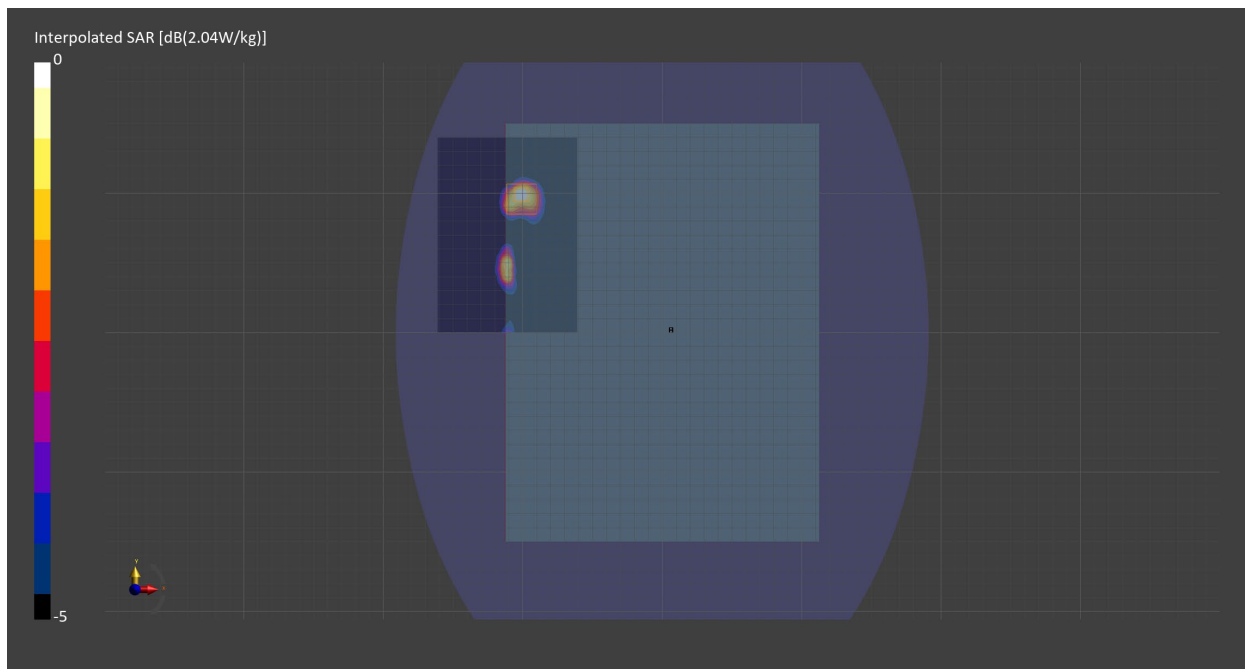
Probe Calibration Date	EX3DV4 - SN7709 2023-11-30	Phantom	ELI V8.0 (20deg probe tilt) - SN2160
DAE Calibration Date	DAE4 Sn1714 2023-11-22	TSL Meas. Date	HBBL-600-10000 2024-Jan-02

Scans Setup

	Area Scan	Zoom Scan
Grid Extents [mm]	100.0 x 140.0	30.0 x 30.0 x 30.0
Grid Steps [mm]	10.0 x 10.0	5.0 x 5.0 x 1.5
Sensor Surface [mm]	3.0	1.4
Graded Grid	N/A	Yes
M2/M1 [%]		82.1
Dist 3dB Peak [mm]		7.0

Measurement Results

	Area Scan	Zoom Scan
psSAR1g [W/Kg]	0.768	0.901
psSAR10g [W/Kg]	0.373	0.422
Power Drift [dB]	N/A	4.79



Measurement Report for ISM 2.4 GHz Band, EDGE BOTTOM, Chain 1

Exposure Conditions

Band	ISM 2.4 GHz Band	TSL Permittivity	40.7
Frequency [MHz] Channel Number	2441.0 39	TSL Conductivity [S/m]	1.78
Group UID	Bluetooth 10032-CAA	Phantom Section TSL	Flat HSL
Conversion Factor	7.66	Test Distance [mm]	0.00
Communication Configuration	IEEE 802.15.1 Bluetooth (GFSK, DH5)		

Hardware Setup

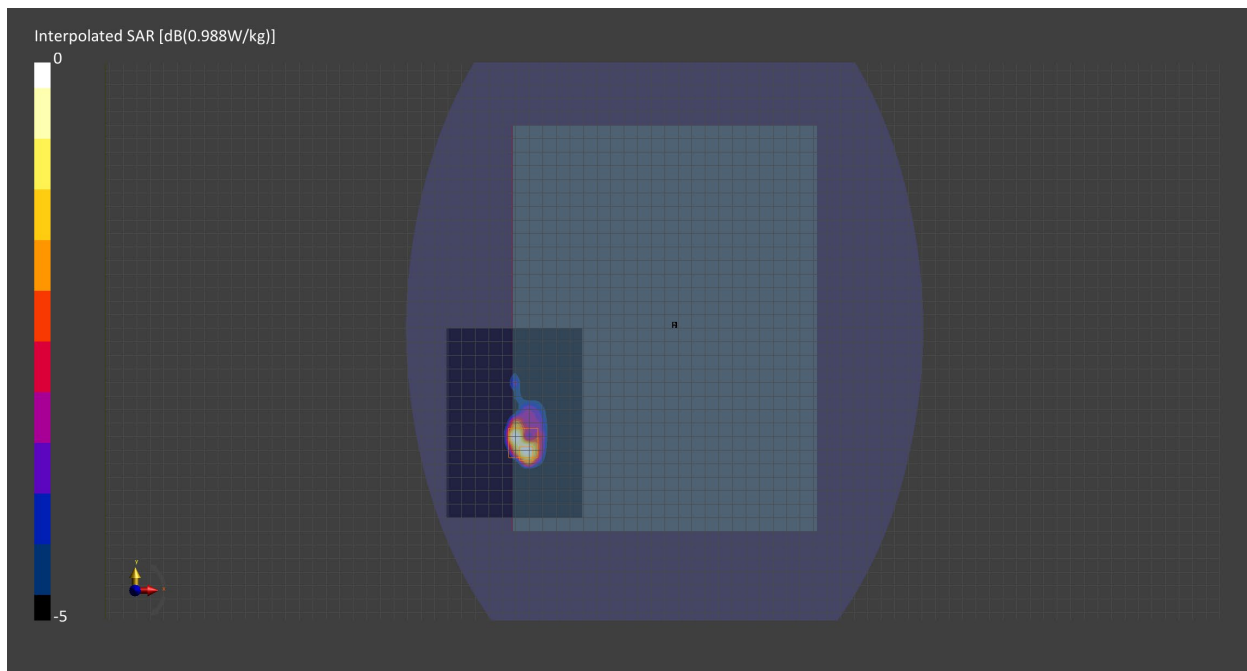
Probe Calibration Date	EX3DV4 - SN7710 2023-02-03	Phantom	ELI V8.0 (20deg probe tilt) - SN2160
DAE Calibration Date	DAE4 Sn1715 2023-01-23	TSL Meas. Date	HBBL-600-10000 2023-Dec-18

Scans Setup

	Area Scan	Zoom Scan
Grid Extents [mm]	100.0 x 140.0	30.0 x 30.0 x 30.0
Grid Steps [mm]	10.0 x 10.0	5.0 x 5.0 x 1.5
Sensor Surface [mm]	3.0	1.4
Graded Grid	Yes	Yes
M2/M1 [%]		72.3
Dist 3dB Peak [mm]		6.3

Measurement Results

	Area Scan	Zoom Scan
psSAR1g [W/Kg]	0.678	0.636
psSAR10g [W/Kg]	0.280	0.279
Power Drift [dB]	n/a	-0.41



Measurement Report for ISM 2.4 GHz Band, EDGE BOTTOM, Chain 0

Exposure Conditions

Band	ISM 2.4 GHz Band	TSL Permittivity	39.5
Frequency [MHz] Channel Number	2441.0 39	TSL Conductivity [S/m]	1.76
Group UID	Bluetooth 10032-CAA	Phantom Section TSL	Flat HSL
Conversion Factor	7.66	Test Distance [mm]	0.00
Communication Configuration	IEEE 802.15.1 Bluetooth (GFSK, DH5)		

Hardware Setup

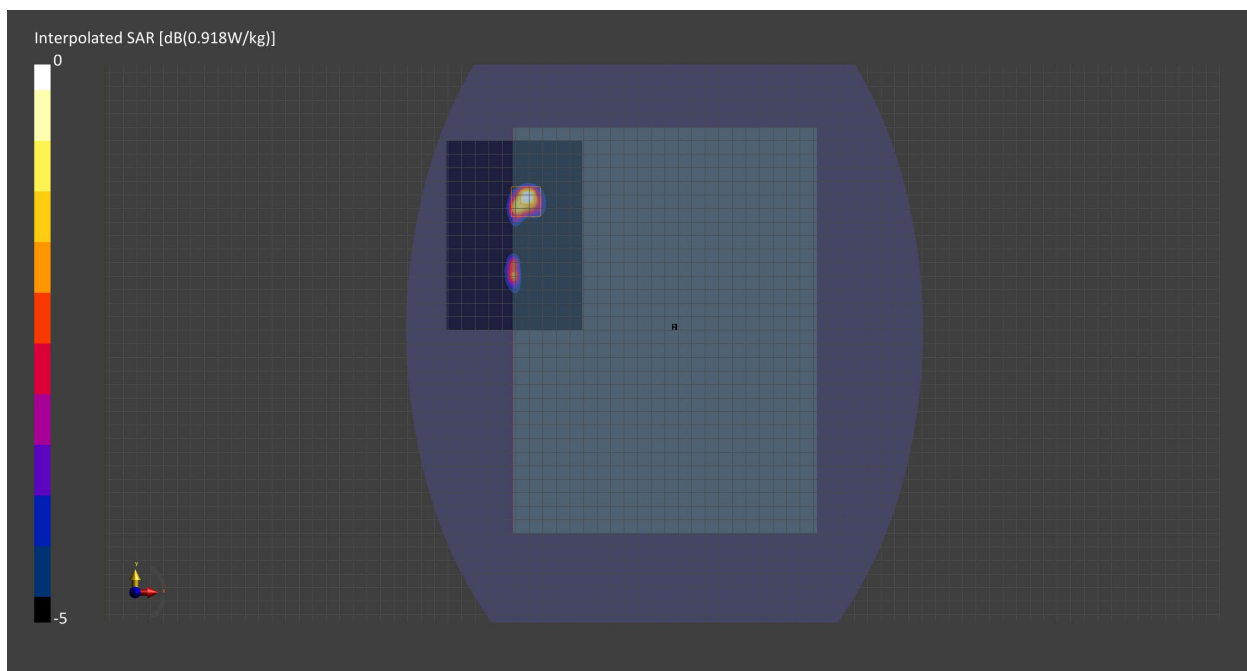
Probe Calibration Date	EX3DV4 - SN7709 2023-11-30	Phantom	ELI V8.0 (20deg probe tilt) - SN2160
DAE Calibration Date	DAE4 Sn1714 2023-11-22	TSL Meas. Date	HBBL-600-10000 2024-Jan-08

Scans Setup

	Area Scan	Zoom Scan
Grid Extents [mm]	100.0 x 140.0	30.0 x 30.0 x 30.0
Grid Steps [mm]	10.0 x 10.0	5.0 x 5.0 x 1.5
Sensor Surface [mm]	3.0	1.4
Graded Grid	Yes	Yes
M2/M1 [%]		74.5
Dist 3dB Peak [mm]		8.1

Measurement Results

	Area Scan	Zoom Scan
psSAR1g [W/Kg]	0.380	0.376
psSAR10g [W/Kg]	0.176	0.167
Power Drift [dB]	n/a	-0.02



Measurement Report for ISM 2.4 GHz Band, EDGE BOTTOM, Chain 1

Exposure Conditions

Band	ISM 2.4 GHz Band	TSL Permittivity	40.4
Frequency [MHz] Channel Number	2441.000 39	TSL Conductivity [S/m]	1.79
Group UID	Bluetooth 10032-CAA	Phantom Section TSL	Flat HSL
Conversion Factor	7.66	Test Distance [mm]	0.00
Communication Configuration	IEEE 802.15.1 Bluetooth (GFSK, DH5)		

Hardware Setup

Probe Calibration Date	EX3DV4 - SN7709 2023-11-30	Phantom	ELI V8.0 (20deg probe tilt) - SN2160
DAE Calibration Date	DAE4 Sn1714 2023-11-22	TSL Meas. Date	HBBL-600-10000 2024-Jan-02

Scans Setup

	Area Scan	Zoom Scan
Grid Extents [mm]	100.0 x 140.0	30.0 x 30.0 x 30.0
Grid Steps [mm]	10.0 x 10.0	5.0 x 5.0 x 1.5
Sensor Surface [mm]	3.0	1.4
Graded Grid	N/A	Yes
M2/M1 [%]		73.0
Dist 3dB Peak [mm]		7.3

Measurement Results

	Area Scan	Zoom Scan
psSAR1g [W/Kg]	0.171	0.186
psSAR10g [W/Kg]	0.089	0.091
Power Drift [dB]	N/A	-2.28

