

2024-04-02 System Performance Check Report D2450V2 - SN963

Summary

Dipole	D2450V2 - SN963		
Frequency [MHz]	2450.0		
Phantom Section TSL	Flat HSL	Dev. Peak [%]	6.1
Power [dBm]	17.0	Iso. Error [%]	-0.4

Exposure Conditions

Dipole Distance [mm]	10	TSL Permittivity	40.3
Conversion Factor	7.89	TSL Conductivity [S/m]	1.88

Hardware Setup

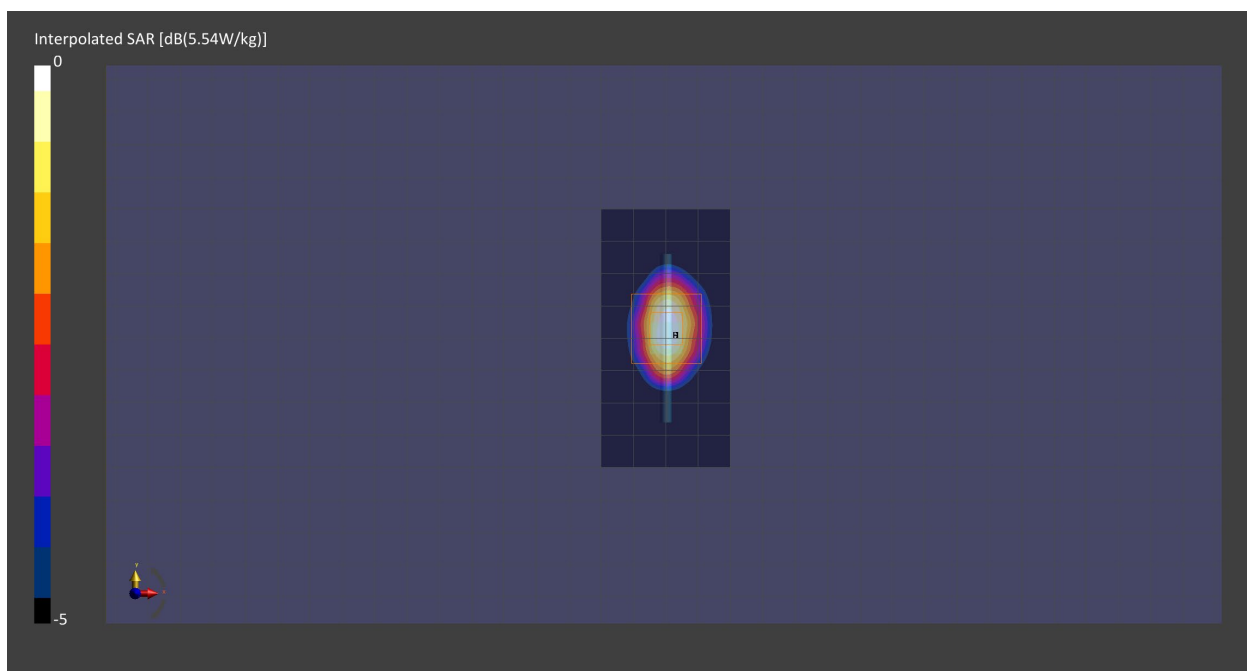
Probe Calibration Date	EX3DV4 - SN7710 2024-01-16	Phantom	ELI V8.0 (20deg probe tilt) - SN2160
DAE Calibration Date	DAE4 Sn1715 2024-02-12	TSL Meas. Date	HBBL600-10000V6 2024-Apr-02

Scans Setup

	Area Scan	Zoom Scan
Grid Extents [mm]	40.0 x 80.0	30.0 x 30.0 x 30.0
Grid Steps [mm]	10.0 x 10.0	5.0 x 5.0 x 1.5
Sensor Surface [mm]	3.0	1.4
Graded Grid	Yes	Yes
M2/M1 [%]		78.1
Dist 3dB Peak [mm]		9.2

Measurement Results

	Area Scan	Zoom Scan
psSAR1g [W/Kg]	2.56	2.57
psSAR10g [W/Kg]	1.20	1.20
Power Drift [dB]	-0.01	-0.00



2024-04-17 System Performance Check Report D2450V2 - SN963

Summary

Dipole	D2450V2 - SN963		
Frequency [MHz]	2450.0		
Phantom Section TSL	Flat HSL	Dev. Peak [%]	-1.7
Power [dBm]	17.0	Iso. Error [%]	1.1

Exposure Conditions

Dipole Distance [mm]	10	TSL Permittivity	40.9
Conversion Factor	7.66	TSL Conductivity [S/m]	1.85

Hardware Setup

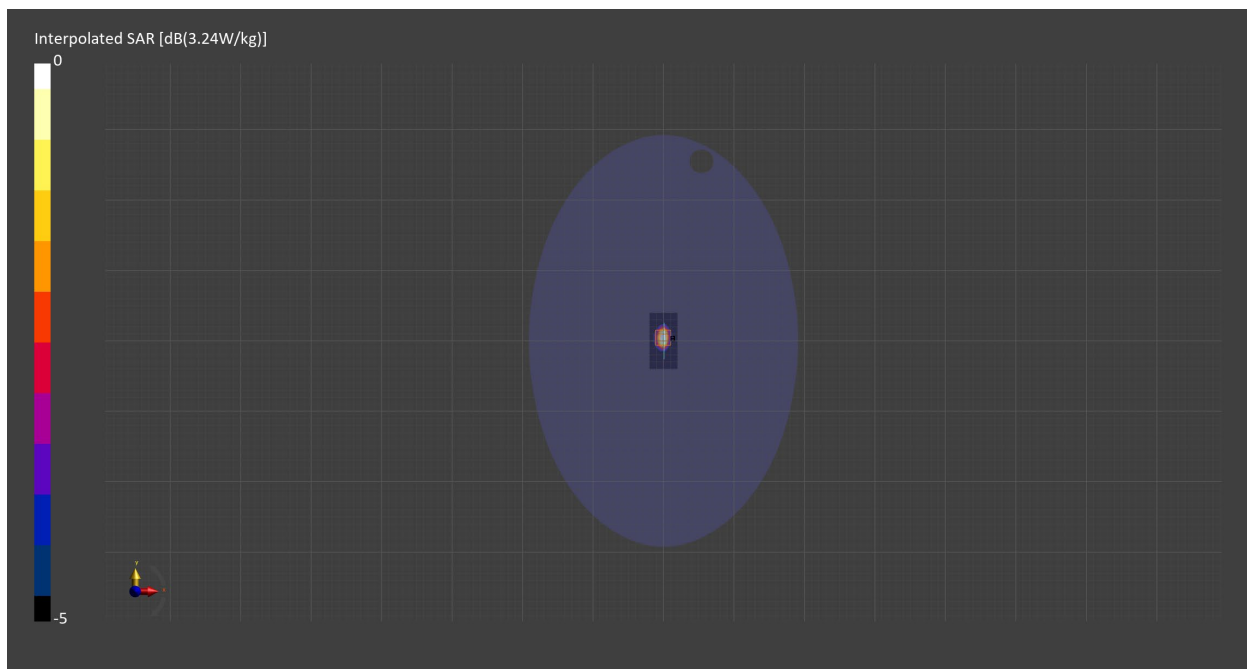
Probe Calibration Date	EX3DV4 - SN7709 2023-11-30	Phantom	ELI V8.0 (20deg probe tilt) - SN2160
DAE Calibration Date	DAE4 Sn1715 2024-02-12	TSL Meas. Date	HBBL600-10000V6 2024-Apr-17

Scans Setup

	Area Scan	Zoom Scan
Grid Extents [mm]	40.0 x 80.0	30.0 x 30.0 x 30.0
Grid Steps [mm]	10.0 x 10.0	5.0 x 5.0 x 1.5
Sensor Surface [mm]	3.0	1.4
Graded Grid	N/A	Yes
M2/M1 [%]		80.9
Dist 3dB Peak [mm]		9.0

Measurement Results

	Area Scan	Zoom Scan
psSAR1g [W/Kg]	2.52	2.51
psSAR10g [W/Kg]	1.17	1.17
Power Drift [dB]	-0.00	-0.01



2024-04-16 System Performance Check Report D5GHzV2 - SN1213

Summary

Dipole	D5GHzV2 - SN1213		
Frequency [MHz]	5750.0		
Phantom Section TSL	Flat HSL	Dev. Peak [%]	-6.7
Power [dBm]	17.0	Iso. Error [%]	1.7

Exposure Conditions

Dipole Distance [mm]	10	TSL Permittivity	35.0
Conversion Factor	5.28	TSL Conductivity [S/m]	5.15

Hardware Setup

Probe Calibration Date	EX3DV4 - SN7711 2024-03-15	Phantom	ELI V5.0 (20deg probe tilt) - SN1196
DAE Calibration Date	DAE4 Sn1716 2024-03-13	TSL Meas. Date	HBBL600-10000V6 2024-Apr-16

Scans Setup

	Area Scan	Zoom Scan
Grid Extents [mm]	40.0 x 80.0	22.0 x 22.0 x 22.0
Grid Steps [mm]	10.0 x 10.0	4.0 x 4.0 x 1.4
Sensor Surface [mm]	3.0	1.4
Graded Grid	N/A	Yes
M2/M1 [%]		62.0
Dist 3dB Peak [mm]		7.4

Measurement Results

	Area Scan	Zoom Scan
psSAR1g [W/Kg]	3.44	3.72
psSAR10g [W/Kg]	1.01	1.06
Power Drift [dB]	-0.01	-0.02

