

System Check_Head_2450MHz

DUT: D2450V2 - SN929

Communication System: CW; Frequency: 2450.000 MHz; Duty Cycle: 1:1

Medium: HSL_2450_231124 Medium parameters used: $f=2450.000$ MHz; $\sigma=1.87$ S/m; $\epsilon_r=39.4$

Ambient Temperature: 23.3°C; Liquid Temperature: 22.3°C

DASY6 Configuration:

- Probe: EX3DV4 - SN7791; ConvF(6.6, 7.35, 6.64); Calibrated: 2023-02-22
- Sensor-Surface: 1.4 mm
- Electronics: DAE4 Sn1776; Calibrated: 2023-03-03
- Phantom: ELI V8.0 (20deg probe tilt); Serial: 2192; Section: Flat
- Measurement Software: 16.2.4.2524
- UID: CW

Pin=17.0dBm/Area Scan (40.0 mm x 80.0 mm): Measurement Grid: 10.0 mm x 10.0 mm

SAR (1g) = 2.54 W/kg; SAR (10g) = 1.17 W/kg;

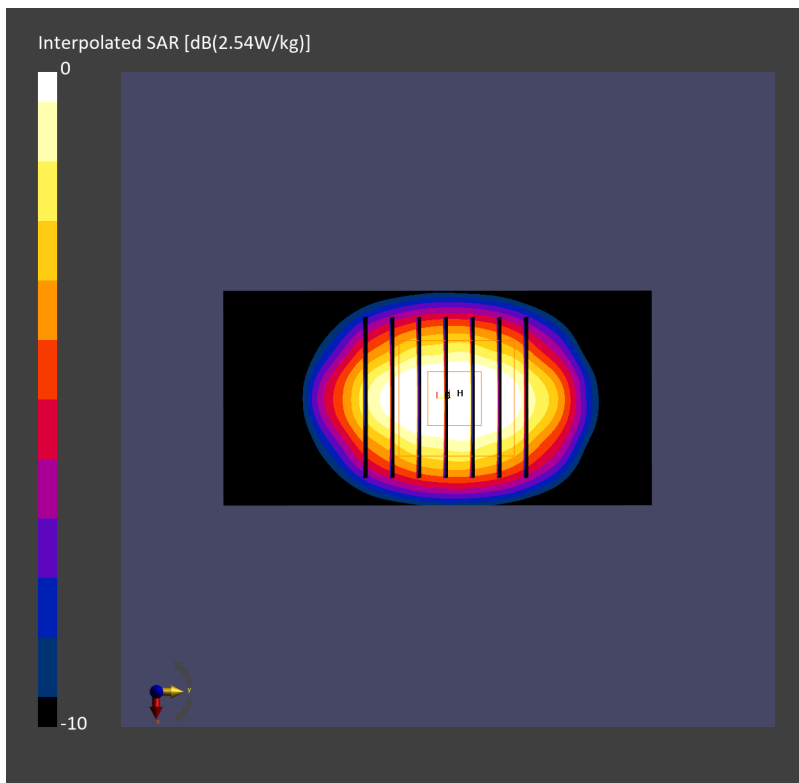
Pin=17.0dBm/Zoom Scan (30.0 mm x 30.0 mm x 30.0 mm): Measurement Grid: 5.0 mm x 5.0 mm x 1.5 mm

Power Drift = -0.00 dB

SAR (1g) = 2.54 W/kg; SAR (8g) = 1.32 W/kg; SAR (10g) = 1.19 W/kg

Smallest distance from peaks to all points 3 dB below = 9.0 mm

Ratio of SAR at M2 to SAR at M1 = 79.6 %



System Check_Head_2450MHz

DUT: D2450V2 - SN929

Communication System: CW; Frequency: 2450.000 MHz; Duty Cycle: 1:1

Medium: HSL_2450_240124 Medium parameters used: $f=2450.000$ MHz; $\sigma=1.81$ S/m; $\epsilon_r=39.5$

Ambient Temperature: 23.5°C; Liquid Temperature: 22.5°C

DASY6 Configuration:

- Probe: EX3DV4 - SN7793; ConvF(6.95, 6.73, 7.1); Calibrated: 2023-03-08
- Sensor-Surface: 1.4 mm
- Electronics: DAE4 Sn376; Calibrated: 2023-09-14
- Phantom: ELI V8.0-I; Serial: 2196; Section: Flat
- Measurement Software: 16.2.4.2524
- UID: CW

Pin=17.0dBm/Area Scan (40.0 mm x 80.0 mm): Measurement Grid: 10.0 mm x 10.0 mm

SAR (1g) = 2.66 W/kg; SAR (10g) = 1.21 W/kg;

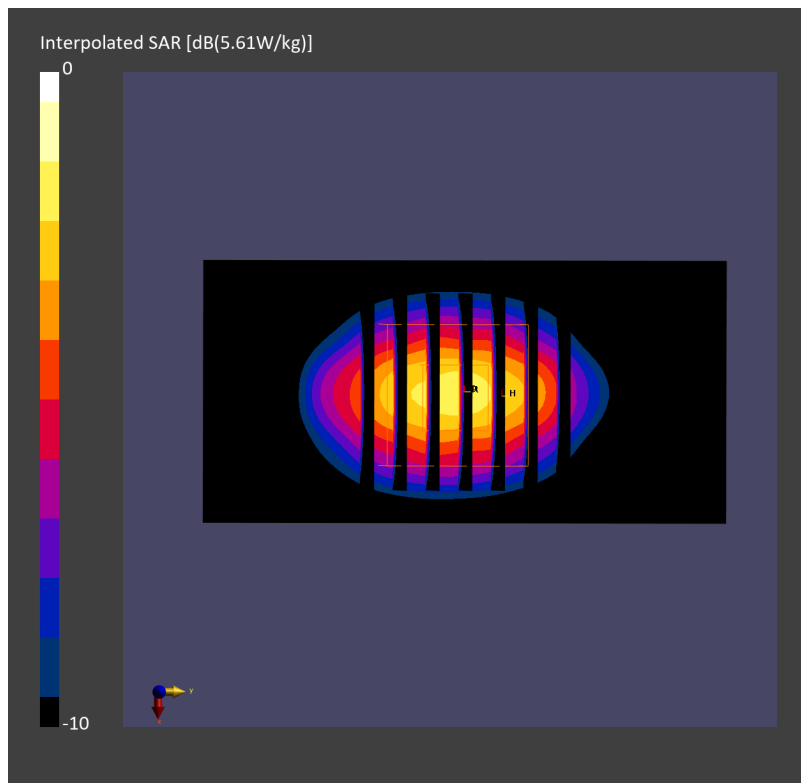
Pin=17.0dBm/Zoom Scan (30.0 mm x 30.0 mm x 30.0 mm): Measurement Grid: 5.0 mm x 5.0 mm x 1.5 mm

Power Drift = 0.01 dB

SAR (1g) = 2.68 W/kg; SAR (8g) = 1.37 W/kg; SAR (10g) = 1.24 W/kg

Smallest distance from peaks to all points 3 dB below = 8.1 mm

Ratio of SAR at M2 to SAR at M1 = 79.2 %



System Check_Head_5250MHz

DUT: D5GHzV2 - SN1171

Communication System: CW; Frequency: 5250.000 MHz; Duty Cycle: 1:1

Medium: HSL_5250_231123 Medium parameters used: $f=5250.000$ MHz; $\sigma=4.59$ S/m; $\epsilon_r=35.5$

Ambient Temperature: 23.8°C; Liquid Temperature: 22.8°C

DASY6 Configuration:

- Probe: EX3DV4 - SN7791; ConvF(4.93, 5.47, 4.85); Calibrated: 2023-02-22
- Sensor-Surface: 1.4 mm
- Electronics: DAE4 Sn1776; Calibrated: 2023-03-03
- Phantom: ELI V8.0 (20deg probe tilt); Serial: 2192; Section: Flat
- Measurement Software: 16.2.4.2524
- UID: CW

Pin=20.0dBm/Area Scan (40.0 mm x 80.0 mm): Measurement Grid: 10.0 mm x 10.0 mm

SAR (1g) = 7.18 W/kg; SAR (10g) = 2.12 W/kg;

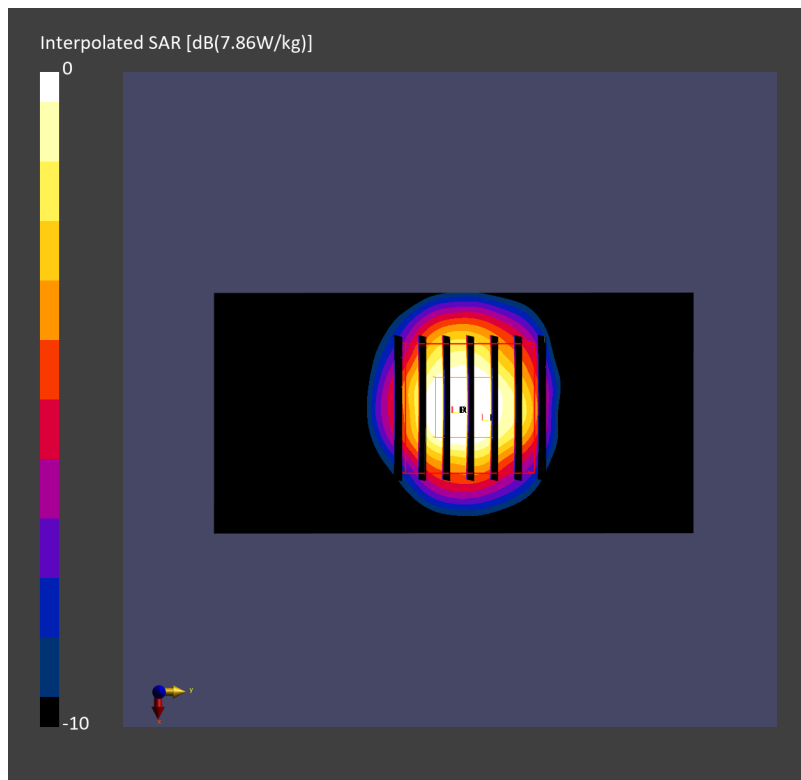
Pin=20.0dBm/Zoom Scan (22.0 mm x 22.0 mm x 22.0 mm): Measurement Grid: 4.0 mm x 4.0 mm x 1.4 mm

Power Drift = -0.01 dB

SAR (1g) = 7.86 W/kg; SAR (8g) = 2.65 W/kg; SAR (10g) = 2.27 W/kg

Smallest distance from peaks to all points 3 dB below = 7.4 mm

Ratio of SAR at M2 to SAR at M1 = 63.6 %



System Check_Head_5600MHz

DUT: D5GHzV2 - SN1171

Communication System: CW; Frequency: 5600.000 MHz; Duty Cycle: 1:1

Medium: HSL_5600_231123 Medium parameters used: $f = 5600.000$ MHz; $\sigma = 4.98$ S/m; $\epsilon_r = 34.9$

Ambient Temperature: 23.8°C; Liquid Temperature: 22.8°C

DASY6 Configuration:

- Probe: EX3DV4 - SN7791; ConvF(4.35, 4.72, 4.41); Calibrated: 2023-02-22
- Sensor-Surface: 1.4 mm
- Electronics: DAE4 Sn1776; Calibrated: 2023-03-03
- Phantom: ELI V8.0 (20deg probe tilt); Serial: 2192; Section: Flat
- Measurement Software: 16.2.4.2524
- UID: CW

Pin=17.0dBm/Area Scan (40.0 mm x 80.0 mm): Measurement Grid: 10.0 mm x 10.0 mm

SAR (1g) = 3.47 W/kg; SAR (10g) = 1.04 W/kg;

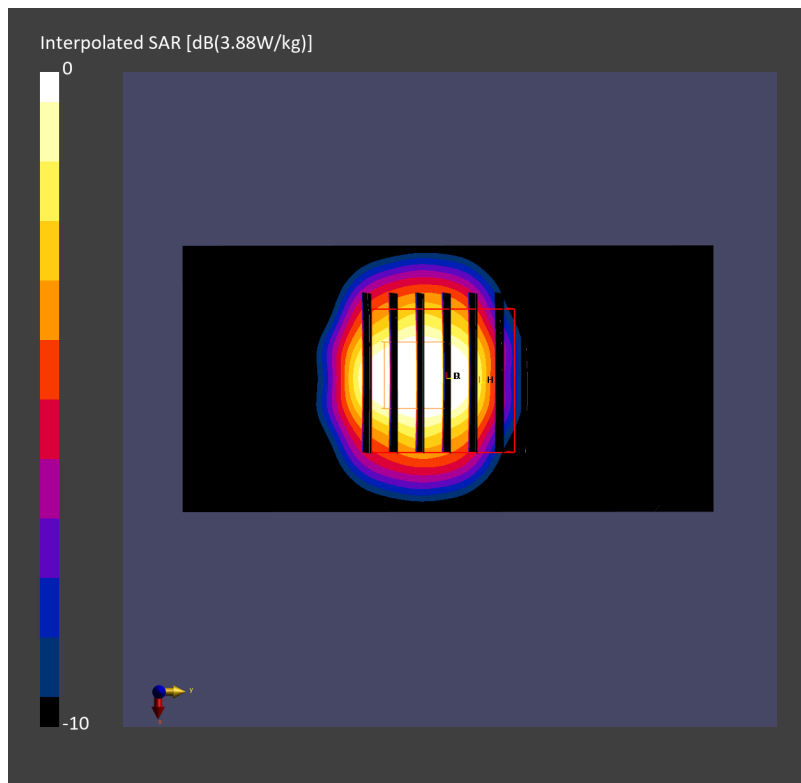
Pin=17.0dBm/Zoom Scan (22.0 mm x 22.0 mm x 22.0 mm): Measurement Grid: 4.0 mm x 4.0 mm x 1.4 mm

Power Drift = -0.00 dB

SAR (1g) = 3.88 W/kg; SAR (8g) = 1.28 W/kg; SAR (10g) = 1.08 W/kg

Smallest distance from peaks to all points 3 dB below = 7.2 mm

Ratio of SAR at M2 to SAR at M1 = 61.2 %



System Check_Head_5750MHz

DUT: D5GHzV2 - SN1171

Communication System: CW; Frequency: 5750.000 MHz; Duty Cycle: 1:1
Medium: HSL_5750_231123 Medium parameters used: $f=5750.000$ MHz; $\sigma=5.16$ S/m; $\epsilon_r=34.5$
Ambient Temperature: 23.8°C; Liquid Temperature: 22.8°C

DASY6 Configuration:

- Probe: EX3DV4 - SN7791; ConvF(4.44, 4.92, 4.4); Calibrated: 2023-02-22
- Sensor-Surface: 1.4 mm
- Electronics: DAE4 Sn1776; Calibrated: 2023-03-03
- Phantom: ELI V8.0 (20deg probe tilt); Serial: 2192; Section: Flat
- Measurement Software: 16.2.4.2524
- UID: CW

Pin=17.0dBm/Area Scan (40.0 mm x 80.0 mm): Measurement Grid: 10.0 mm x 10.0 mm
SAR (1g) = 3.32 W/kg; SAR (10g) = 0.993 W/kg;

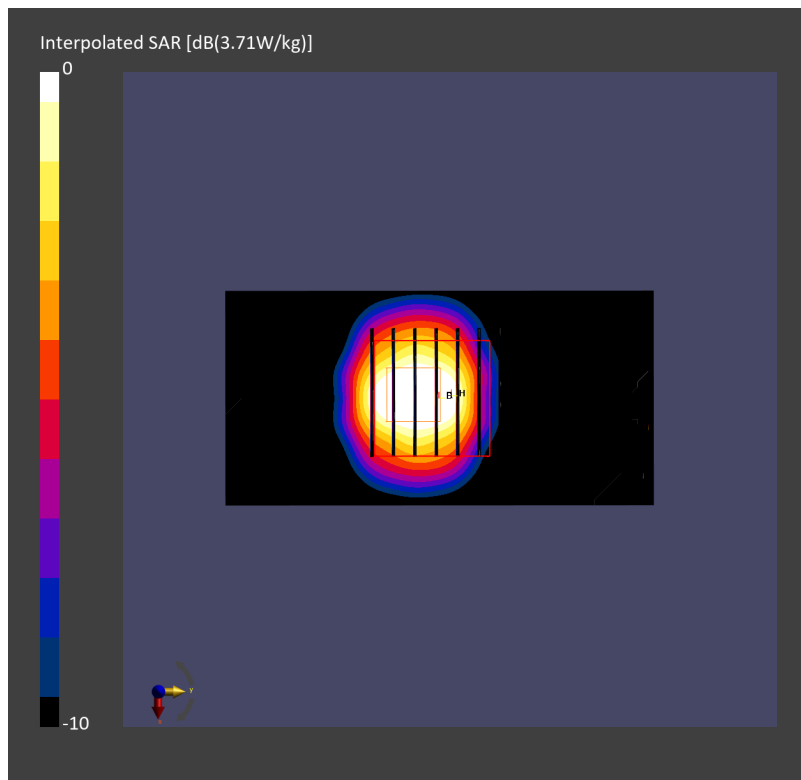
Pin=17.0dBm/Zoom Scan (22.0 mm x 22.0 mm x 22.0 mm): Measurement Grid: 4.0 mm x 4.0 mm x 1.4 mm

Power Drift = 0.02 dB

SAR (1g) = 3.71 W/kg; SAR (8g) = 1.22 W/kg; SAR (10g) = 1.04 W/kg

Smallest distance from peaks to all points 3 dB below = 7.2 mm

Ratio of SAR at M2 to SAR at M1 = 59.9 %



System Check_Head_5750MHz

DUT: D5GHzV2 - SN1171

Communication System: CW; Frequency: 5750.000 MHz; Duty Cycle: 1:1

Medium: HSL_5G_240217 Medium parameters used: $f = 5750.000$ MHz; $\sigma = 5.15$ S/m; $\epsilon_r = 35.6$

Ambient Temperature: 23.6°C; Liquid Temperature: 22.6°C

DASY6 Configuration:

- Probe: EX3DV4 - SN7590; ConvF(5.02, 5.02, 5.02); Calibrated: 2023-03-23
- Sensor-Surface: 1.4 mm
- Electronics: DAE4 Sn1399; Calibrated: 2023-02-21
- Phantom: ELI V4.0 (20deg probe tilt); Serial: 1227; Section: Flat
- Measurement Software: 16.2.4.2524
- UID: CW

Pin=17.0dBm/Area Scan (40.0 mm x 80.0 mm): Measurement Grid: 10.0 mm x 10.0 mm

SAR (1g) = 3.14 W/kg; SAR (10g) = 0.916 W/kg;

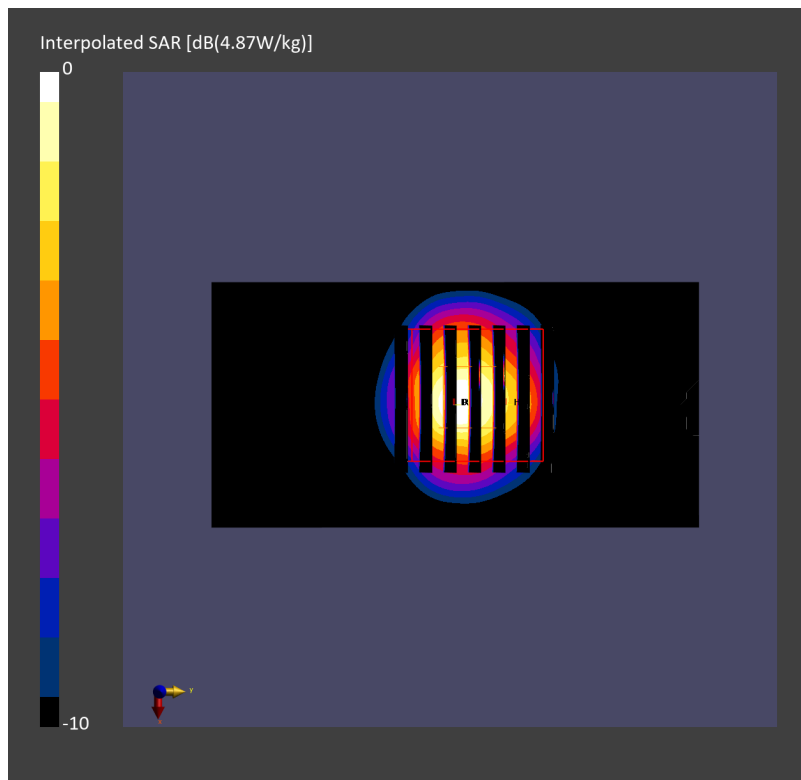
Pin=17.0dBm/Zoom Scan (22.0 mm x 22.0 mm x 22.0 mm): Measurement Grid: 4.0 mm x 4.0 mm x 1.4 mm

Power Drift = -0.03 dB

SAR (1g) = 3.72 W/kg; SAR (8g) = 1.14 W/kg; SAR (10g) = 1.07 W/kg

Smallest distance from peaks to all points 3 dB below = 7.4 mm

Ratio of SAR at M2 to SAR at M1 = 60.1 %



System Check_Head_5850MHz

DUT: D5GHzV2 - SN1171

Communication System: CW; Frequency: 5850.000 MHz; Duty Cycle: 1:1

Medium: HSL_5G_231123 Medium parameters used: $f = 5850.000$ MHz; $\sigma = 5.27$ S/m; $\epsilon_r = 34.4$

Ambient Temperature: 23.8°C; Liquid Temperature: 22.8°C

DASY6 Configuration:

- Probe: EX3DV4 - SN7625; ConvF(4.95, 4.95, 4.95); Calibrated: 2023-01-26
- Sensor-Surface: 1.4 mm
- Electronics: DAE4 Sn1794; Calibrated: 2023-02-01
- Phantom: ELI V8.0 (20deg probe tilt); Serial: 2192; Section: Flat
- Measurement Software: 16.2.4.2524
- UID: CW

Pin=17.0dBm/Area Scan (40.0 mm x 80.0 mm): Measurement Grid: 10.0 mm x 10.0 mm

SAR (1g) = 3.55 W/kg; SAR (10g) = 1.03 W/kg;

Pin=17.0dBm/Zoom Scan (22.0 mm x 22.0 mm x 22.0 mm): Measurement Grid: 4.0 mm x 4.0 mm x 1.4 mm

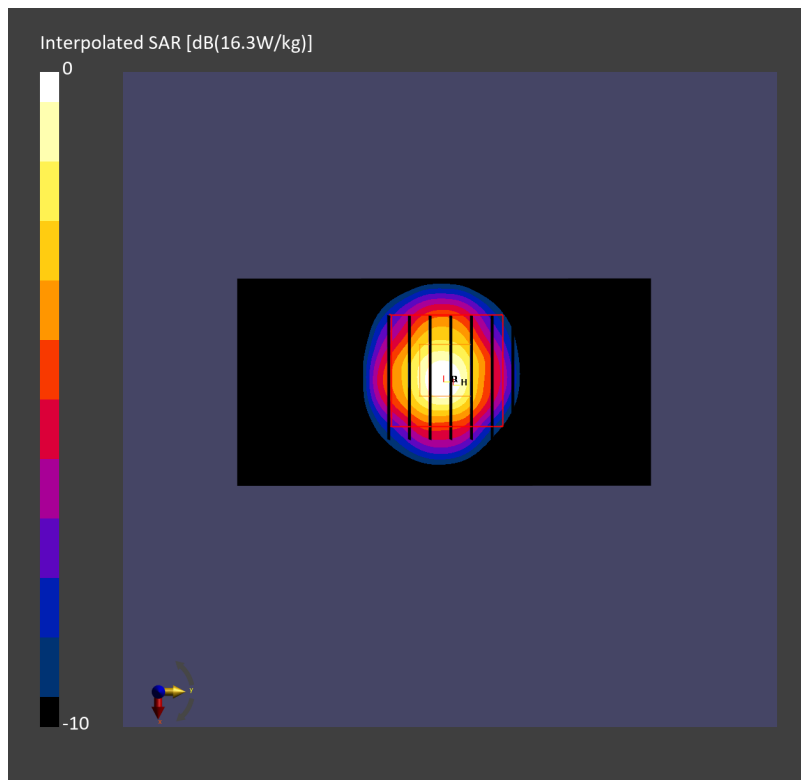
mm

Power Drift = 0.09 dB

SAR (1g) = 3.82 W/kg; SAR (8g) = 1.31 W/kg; SAR (10g) = 1.13 W/kg

Smallest distance from peaks to all points 3 dB below = 7.6 mm

Ratio of SAR at M2 to SAR at M1 = 60.9 %



System Check_Head_5850MHz

DUT: D5GHzV2 - SN1171

Communication System: CW; Frequency: 5850.000 MHz; Duty Cycle: 1:1

Medium: HSL_5G_240217 Medium parameters used: $f = 5850.000$ MHz; $\sigma = 5.25$ S/m; $\epsilon_r = 35.5$

Ambient Temperature: 23.6°C; Liquid Temperature: 22.6°C

DASY6 Configuration:

- Probe: EX3DV4 - SN3976; ConvF(4.81, 4.81, 4.81); Calibrated: 2024-01-22
- Sensor-Surface: 1.4 mm
- Electronics: DAE4 Sn656; Calibrated: 2024-01-18
- Phantom: ELI V4.0 (20deg probe tilt); Serial: 1227; Section: Flat
- Measurement Software: 16.2.4.2524
- UID: CW

Pin=17.0dBm/Area Scan (40.0 mm x 80.0 mm): Measurement Grid: 10.0 mm x 10.0 mm

SAR (1g) = 3.78 W/kg; SAR (10g) = 1.08 W/kg;

Pin=17.0dBm/Zoom Scan (22.0 mm x 22.0 mm x 22.0 mm): Measurement Grid: 4.0 mm x 4.0 mm x 1.4 mm

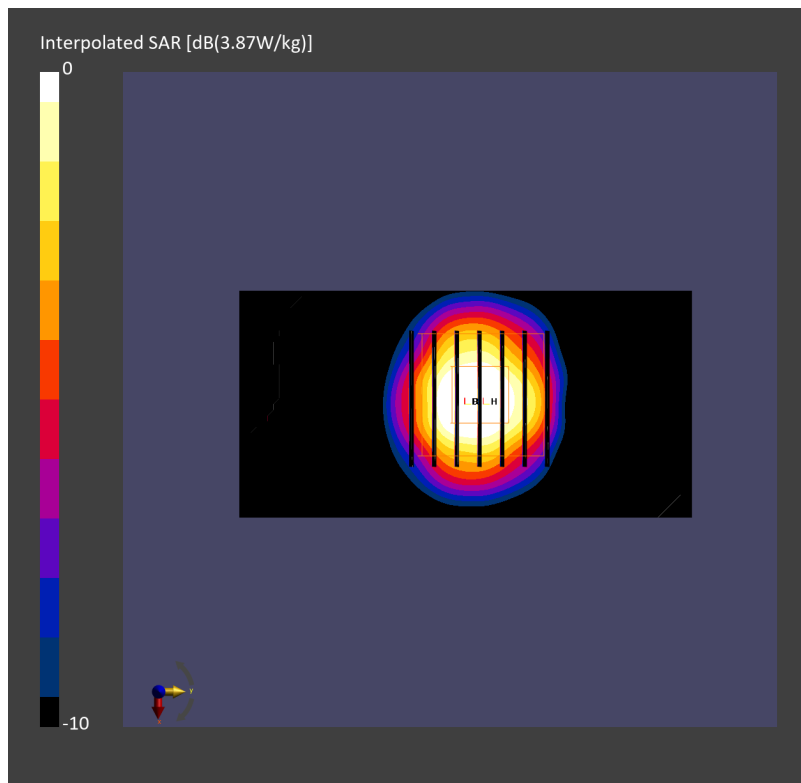
mm

Power Drift = 0.02 dB

SAR (1g) = 3.87 W/kg; SAR (8g) = 1.26 W/kg; SAR (10g) = 1.08 W/kg

Smallest distance from peaks to all points 3 dB below = 7.4 mm

Ratio of SAR at M2 to SAR at M1 = 59.3 %



System Check_Head_6500MHz

DUT: D6.5GHzV2 - SN1083

Communication System: CW; Frequency: 6500.000 MHz; Duty Cycle: 1:1

Medium: HSL_6500_231124 Medium parameters used: $f=6500.000$ MHz; $\sigma=6.13$ S/m; $\epsilon_r=35.0$

Ambient Temperature: 23.3°C; Liquid Temperature: 22.3°C

DASY6 Configuration:

- Probe: EX3DV4 - SN7791; ConvF(5.07, 5.47, 4.84); Calibrated: 2023-02-22
- Sensor-Surface: 1.4 mm
- Electronics: DAE4 Sn1776; Calibrated: 2023-03-03
- Phantom: ELI V8.0 (20deg probe tilt); Serial: 2192; Section: Flat
- Measurement Software: 16.2.4.2524
- UID: CW

Pin=20.0dBm/Area Scan (51.0 mm x 85.0 mm): Measurement Grid: 8.5 mm x 8.5 mm

SAR (1g) = 23.8 W/kg; SAR (10g) = 4.76 W/kg;

Pin=20.0dBm/Zoom Scan (22.0 mm x 22.0 mm x 22.0 mm): Measurement Grid: 3.4 mm x 3.4 mm x 1.4 mm

Power Drift = 0.03 dB

SAR (1g) = 27.8 W/kg; SAR (8g) = 6.34 W/kg; SAR (10g) = 5.20 W/kg

Smallest distance from peaks to all points 3 dB below = 4.8 mm

Ratio of SAR at M2 to SAR at M1 = 50.0 %

psAPD (1.0cm², sq) = 278 [W/m²]; psAPD (4.0cm², sq) = 127 [W/m²]

