

# ANTENNA INFORMATION

Antenna manufacturer	AWAN
Address	Room B2-F, No. 207-1, Section 3, Beixin Road, Xindian District, New Taipei City 231, Taiwan
Antenna Part number	Main: AYL6Y-100040A                      Aux: AYL6Y-100041A
Antenna type (ex: PIFA, Dipole...etc)	PIFA

Antenna Peak gain w/ cable loss (dBi)*										
	<b>2.4GHz</b> 2400-2483.5 MHz	<b>5.2GHz</b> 5150-5250MHz	<b>5.3GHz</b> 5250-5350MHz	<b>5.6GHz</b> 5470-5725MHz	<b>5.8GHz</b> 5725-5850MHz	<b>5.9GHz</b> 5850-5895MHz	<b>6.2GHz</b> 5925-6425MHz	<b>6.5GHz</b> 6425-6525MHz	<b>6.7GHz</b> 6525-6875MHz	<b>7.0 GHz</b> 6875-7125MHz
Main	2.3	6.7	6.2	6.2	5.1	5.5	5.5	4.4	5.8	5.7
Aux	1.9	5.2	4.5	5.7	5.8	5.8	7.1	7.0	7.3	6.5

Cable Assembly Part Number and Information					
	<b>Cable PN</b>	<b>Cable length(cm)</b>	<b>Cable diameter(mm)</b>	<b>Impedance(ohm)</b>	<b>Connector type</b>
Main	CY7006-0051001	5	1.13	50	I-PEX MHF4-L 20565-001R-13
Aux	CY7006-0151004	15	1.13	50	I-PEX MHF4-L 20565-001R-13

\* 3D Antenna Peak Gain required being test in system basis.

# Table of Contents

<b>Cover page</b> .....	<b>1</b>
<b>1. Document Revision History</b> .....	<b>3</b>
<b>2. Test &amp; System Description</b>	
2.1 Measurement Method and System.....	4
2.2 Test setup.....	4
2.3 Equipment list.....	5
<b>3. Radiation characteristics of antenna loaded in Host Platform</b> .....	<b>6</b>
<b>Annex A. Photographs</b>	
A.1 Setup Photo.....	16

<b>Revision #</b>	<b>Revision Details</b>	<b>Issued Date</b>
Rev. 00	First Issue	2023.06.20

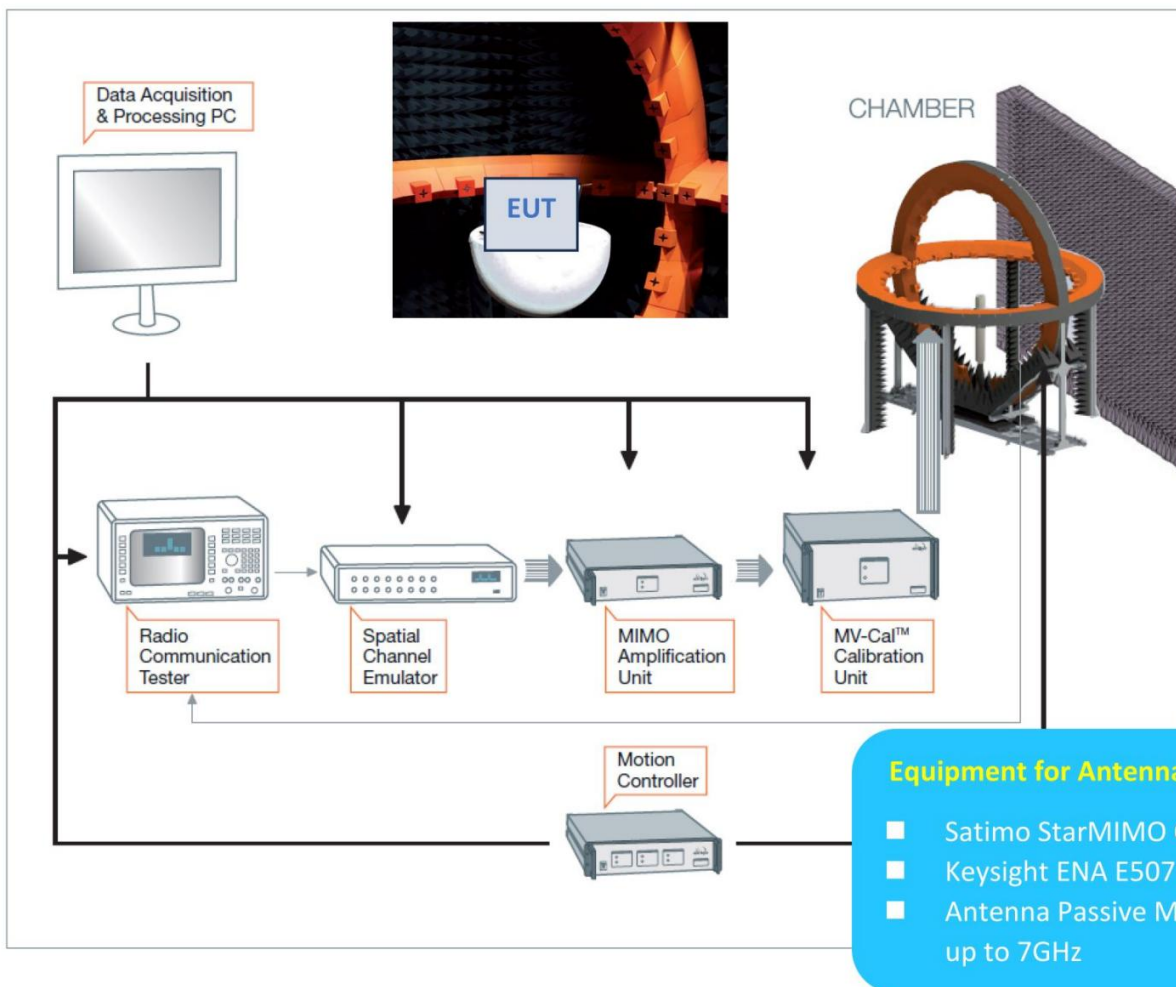
## 1. Document Revision History

## 2. Test & System Description

### 2.1 Measurement Method and System

*This test report is prepared for host antenna testing under a Full Anechoic Chamber (MVG StarMIMO Chamber).*

### 2.2 Test setup



**2.3 Equipment list**

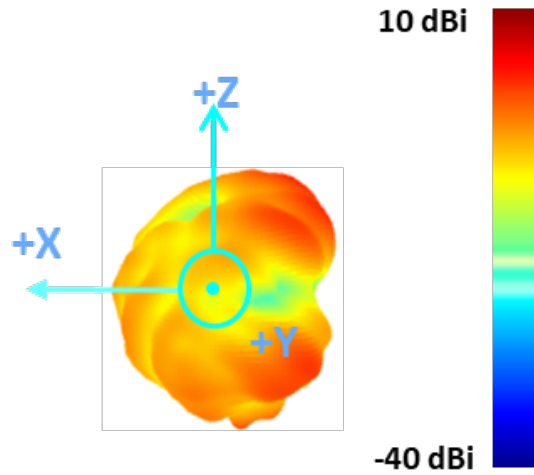
Item	Equipment	Manufacturer	Model	Cal. Date	Cal. Due Date
1	SATIMO Chamber	MVG	StarMIMO	2023-08-18	2024-08-17
2	Network Analyzer	Keysight	E5071C	2023-06-16	2024-06-15

### 3. Radiation characteristics of antenna loaded in Host Platform

#### Main Antenna

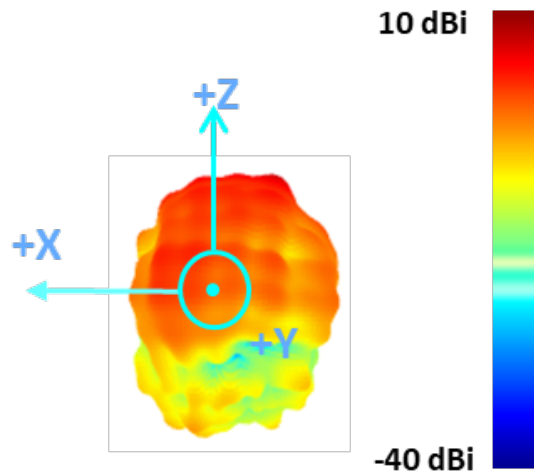
Max Antenna 3D Radiation Pattern 2400 – 2483.5 MHz

Frequency (MHz)	Peak Gain w/ Cable Loss (dBi)
2442	2.3



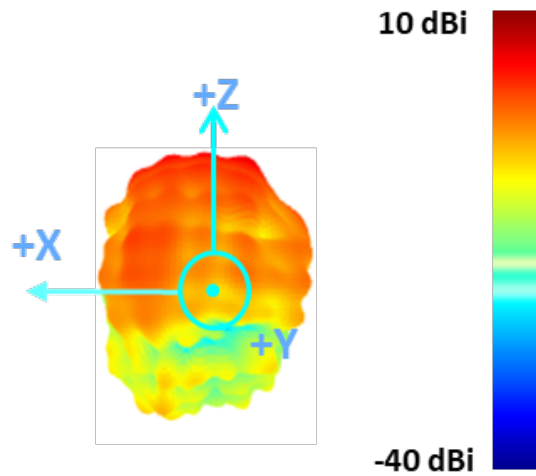
Max Antenna 3D Radiation Pattern 5150-5250 MHz

Frequency (MHz)	Peak Gain w/ Cable Loss (dBi)
5150-5250	6.7



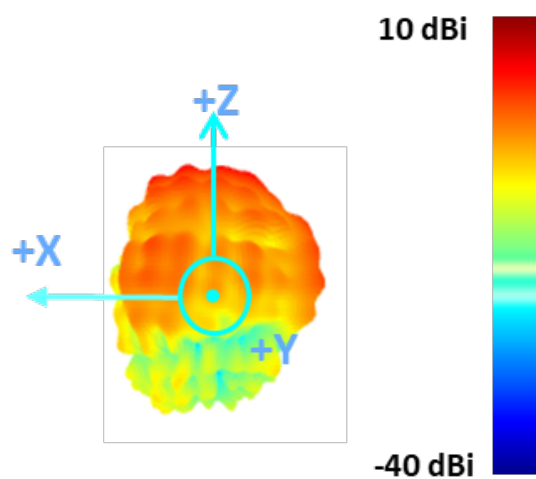
Max Antenna 3D Radiation Pattern 5250-5350 MHz

Frequency (MHz)	Peak Gain w/ Cable Loss (dBi)
5250-5350	6.2



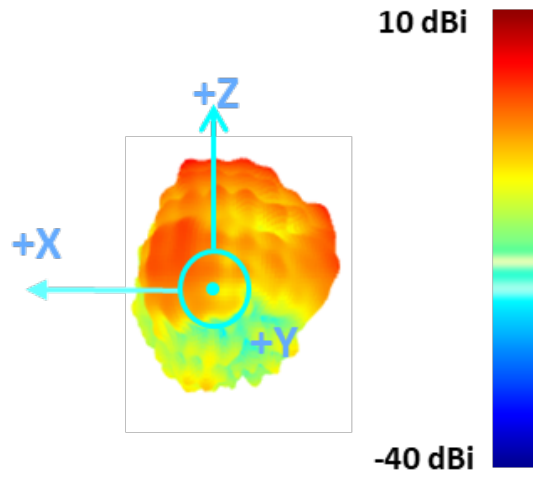
Max Antenna 3D Radiation Pattern 5470-5725 MHz

Frequency (MHz)	Peak Gain w/ Cable Loss (dBi)
5470-5725	6.2



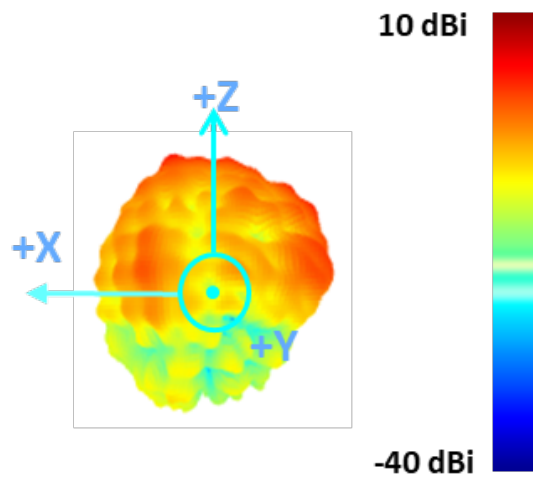
Max Antenna 3D Radiation Pattern 5725-5850 MHz

Frequency (MHz)	Peak Gain w/ Cable Loss (dBi)
5725-5850	5.1



Max Antenna 3D Radiation Pattern 5850-5895 MHz

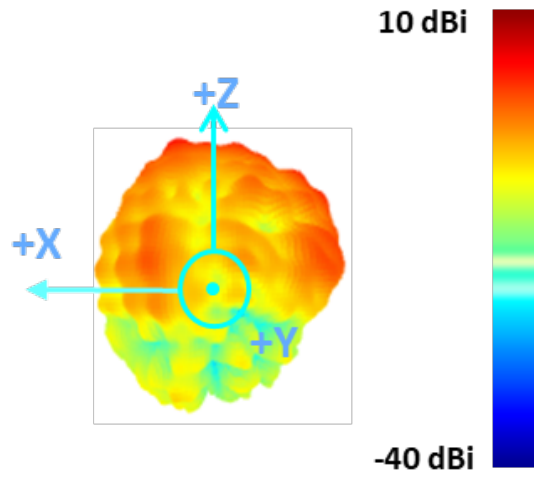
Frequency (MHz)	Peak Gain w/ Cable Loss (dBi)
5850-5895	5.5





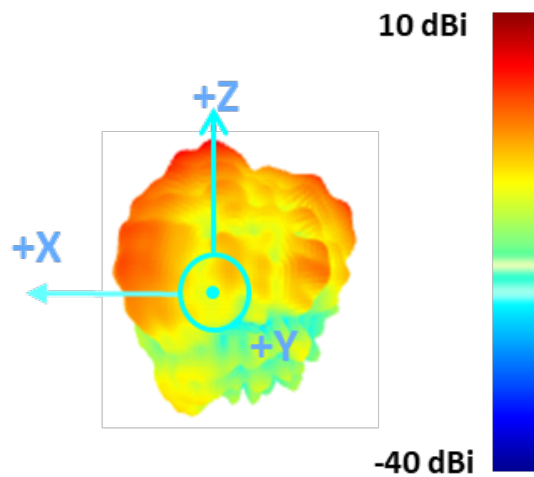
### Max Antenna 3D Radiation Pattern 5925-6425 MHz

Frequency (MHz)	Peak Gain w/ Cable Loss (dBi)
5925-6425	5.5



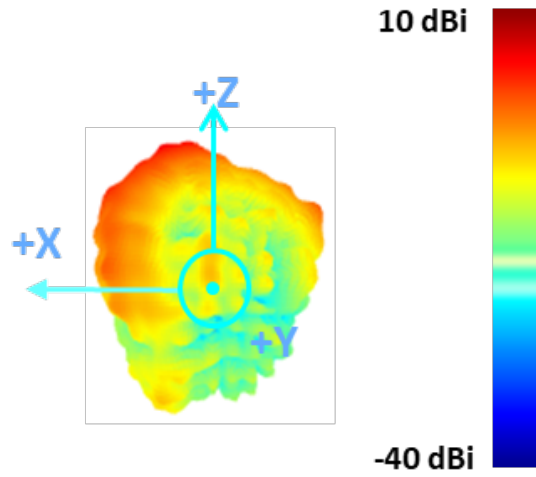
### Max Antenna 3D Radiation Pattern 6425-6525 MHz

Frequency (MHz)	Peak Gain w/ Cable Loss (dBi)
6425-6525	4.4



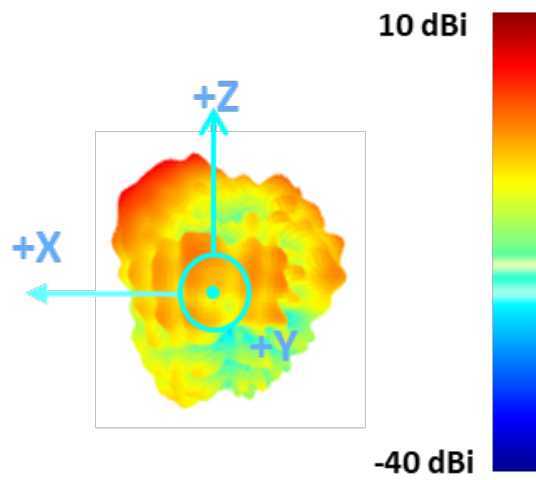
Max Antenna 3D Radiation Pattern 6525-6875 MHz

Frequency (MHz)	Peak Gain w/ Cable Loss (dBi)
6525-6875	5.8



Max Antenna 3D Radiation Pattern 6875-7125 MHz

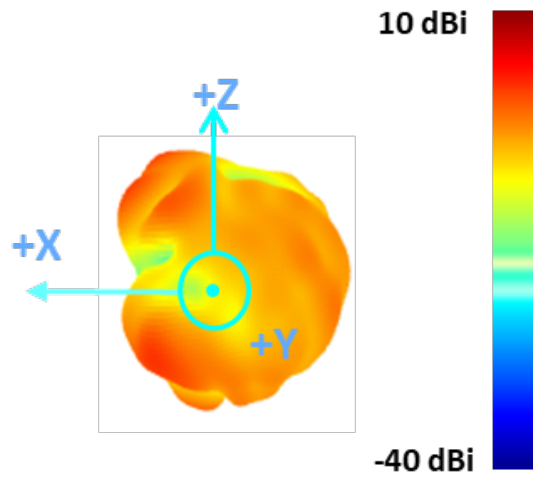
Frequency (MHz)	Peak Gain w/ Cable Loss (dBi)
6875-7125	5.7



### Auxiliary Antenna

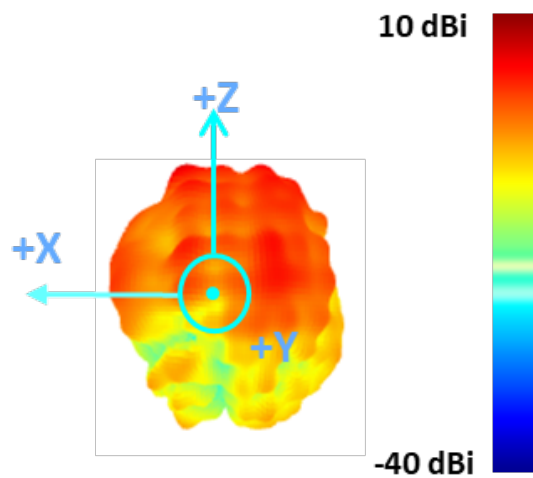
#### Max Antenna 3D Radiation Pattern 2400 – 2483.5 MHz

Frequency (MHz)	Peak Gain w/ Cable Loss (dBi)
2400-2483.5	1.9



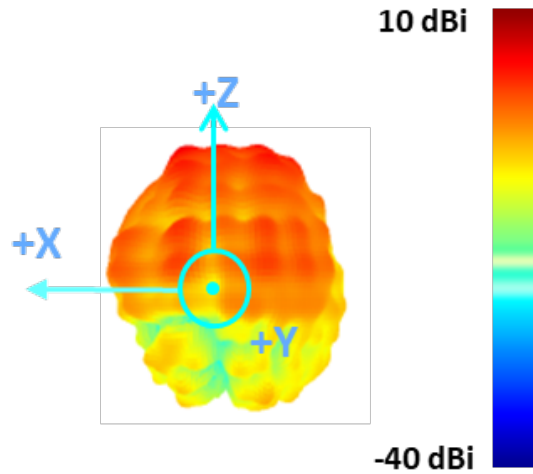
#### Max Antenna 3D Radiation Pattern 5150-5250 MHz

Frequency (MHz)	Peak Gain w/ Cable Loss (dBi)
5150-5250	5.2



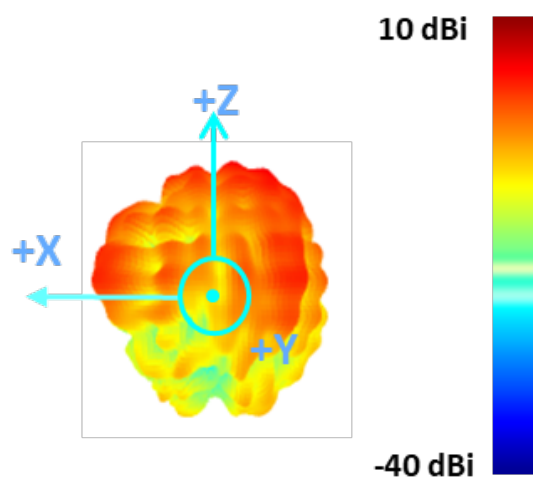
Max Antenna 3D Radiation Pattern 5250-5350 MHz

Frequency (MHz)	Peak Gain w/ Cable Loss (dBi)
5250-5350	4.5



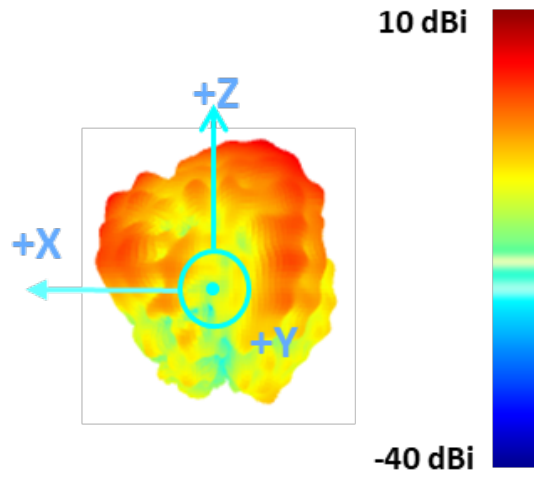
Max Antenna 3D Radiation Pattern 5470-5725 MHz

Frequency (MHz)	Peak Gain w/ Cable Loss (dBi)
5470-5725	5.7



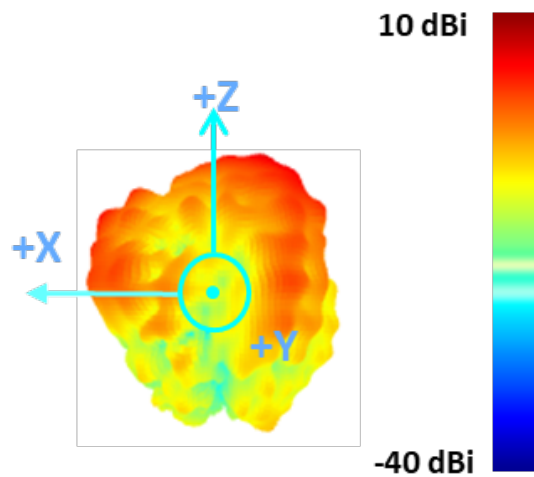
Max Antenna 3D Radiation Pattern 5725-5850 MHz

Frequency (MHz)	Peak Gain w/ Cable Loss (dBi)
5725-5850	5.8



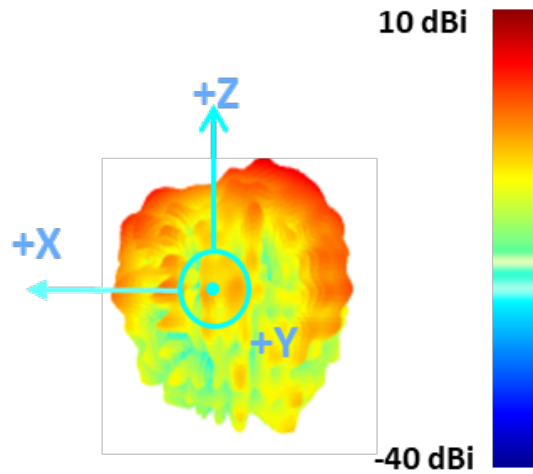
Max Antenna 3D Radiation Pattern 5850-5895 MHz

Frequency (MHz)	Peak Gain w/ Cable Loss (dBi)
5850-5895	5.8



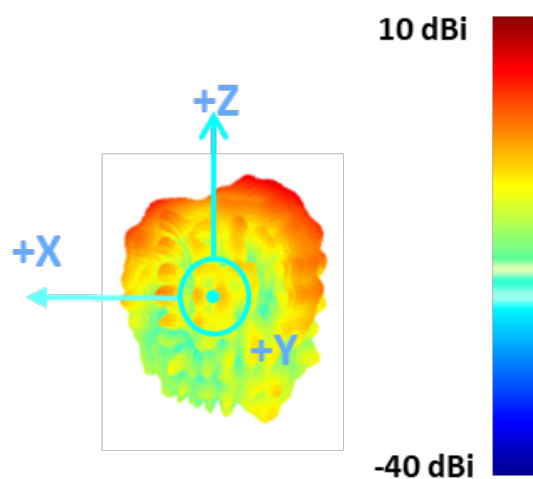
Max Antenna 3D Radiation Pattern 5925-6425 MHz

Frequency (MHz)	Peak Gain w/ Cable Loss (dBi)
5925-6425	7.1



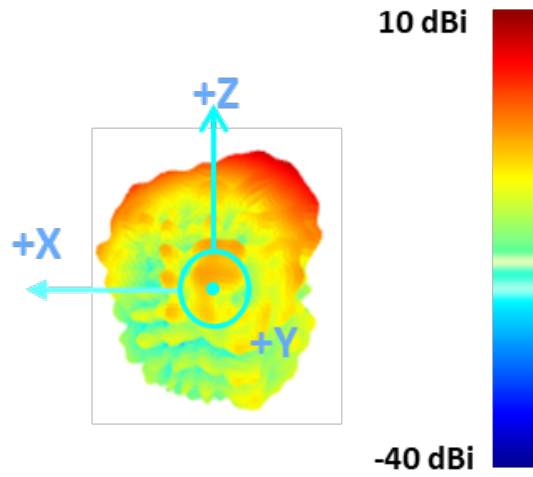
Max Antenna 3D Radiation Pattern 6425-6525 MHz

Frequency (MHz)	Peak Gain w/ Cable Loss (dBi)
6425-6525	7.0



Max Antenna 3D Radiation Pattern 6525-6875 MHz

Frequency (MHz)	Peak Gain w/ Cable Loss (dBi)
6525-6875	7.3



Max Antenna 3D Radiation Pattern 6875-7125 MHz

Frequency (MHz)	Peak Gain w/ Cable Loss (dBi)
6875-7125	6.5

