



Fig.1 Photograph of the SAR measurement system

Photograph of the tissue simulant fluid liquid depth (Head)

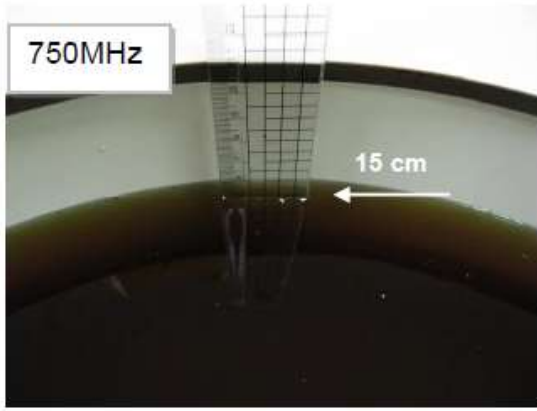


Fig.2.1

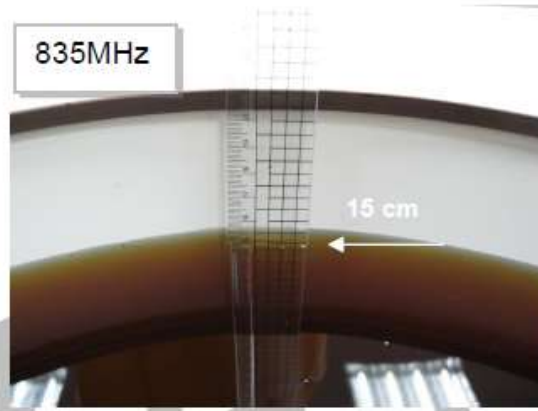


Fig.2.2

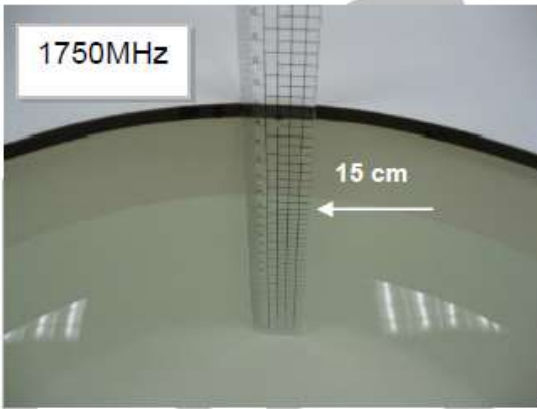


Fig.2.3

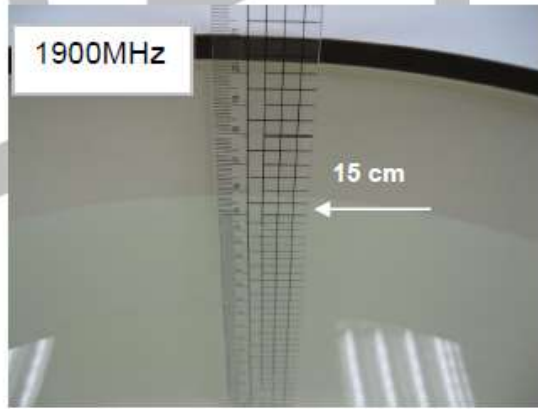


Fig.2.4

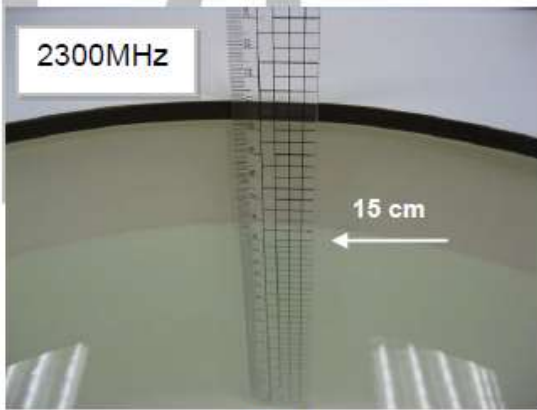


Fig.2.5

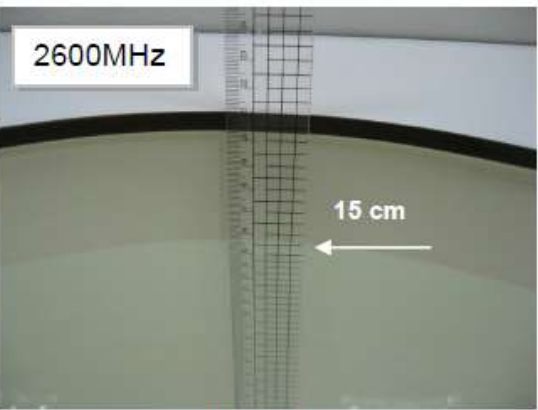


Fig.2.6

Photograph of the tissue simulant fluid liquid depth

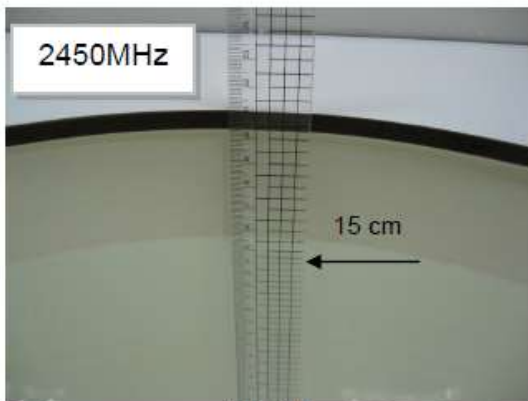


Fig.2.7

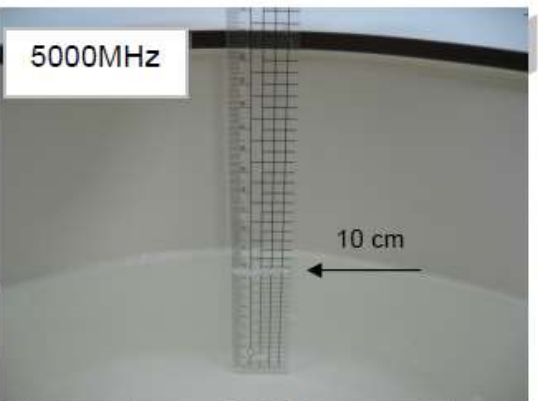
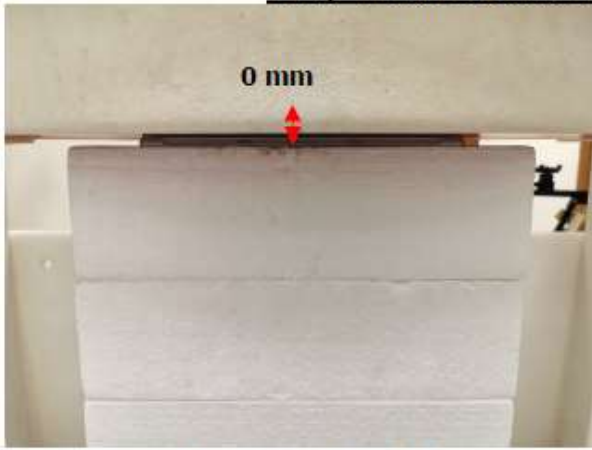


Fig.2.8

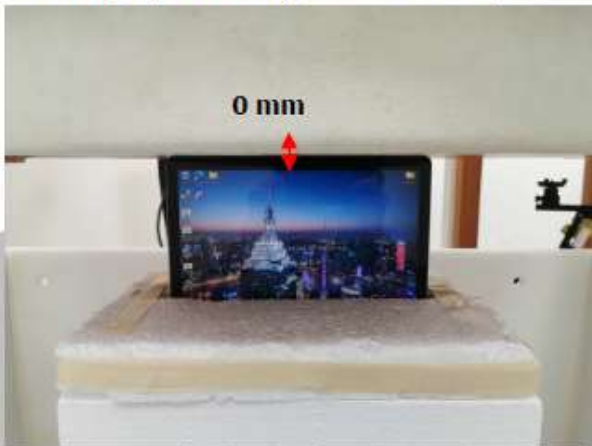
Body - distance between flat phantom and EUT is 0 mm



Photograph 1. Body, Back Surface, 0mm



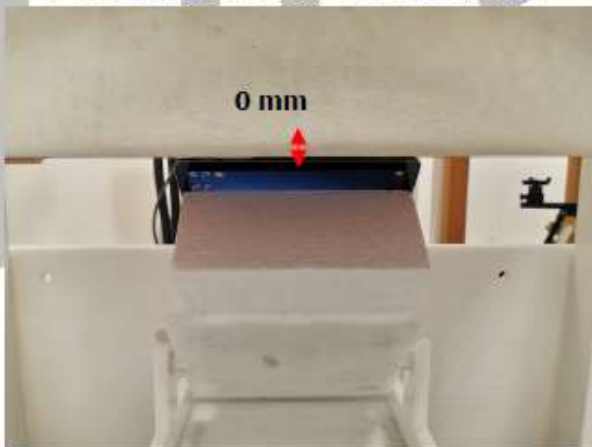
Photograph 2. Body, Back Surface, 0mm



Photograph 3. Body, Top Edge, 0mm



Photograph 4. Body, Top Edge, 0mm



Photograph 5. Body, Top Curve, 0mm



Photograph 6. Body, Top Curve, 0mm

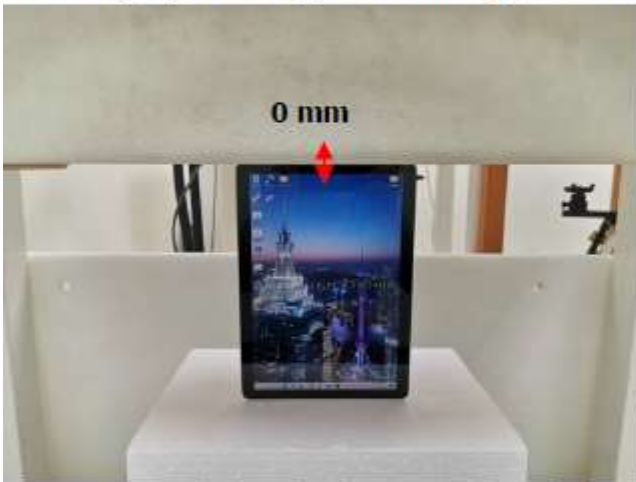
Body - distance between flat phantom and EUT is 0 mm



Photograph 7. Body, Bottom Edge, 0mm



Photograph 8. Body, Bottom Edge, 0mm



Photograph 9. Body, Right Edge, 0mm



Photograph 10. Body, Right Edge, 0mm

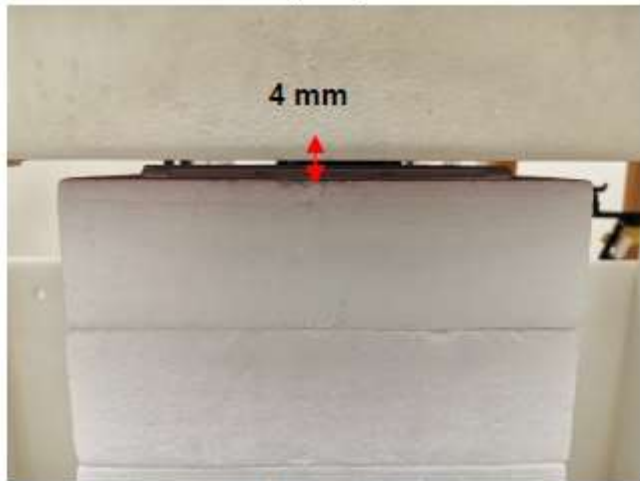


Photograph 11. Body, Left Edge, 0mm



Photograph 12. Body, Left Edge, 0mm

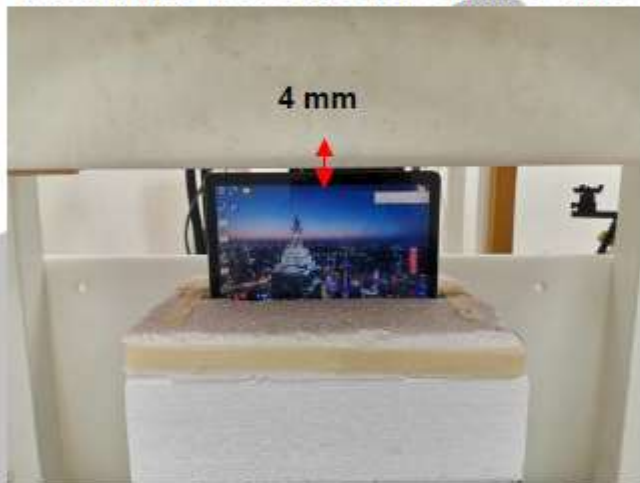
Body - distance between flat phantom and EUT is 4 mm



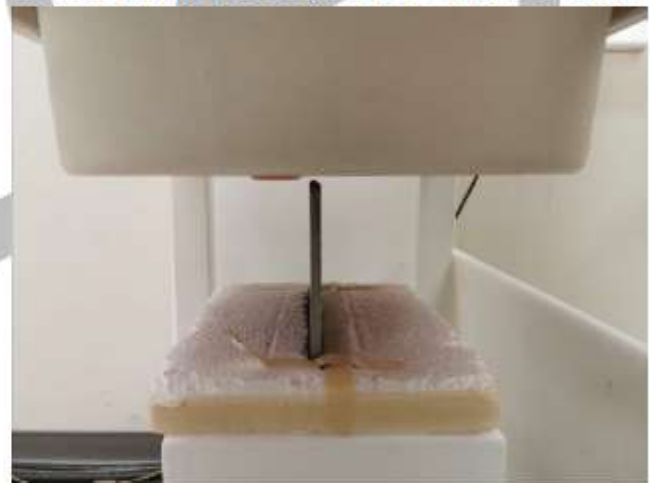
Photograph 13. Body, Back Surface, 4mm



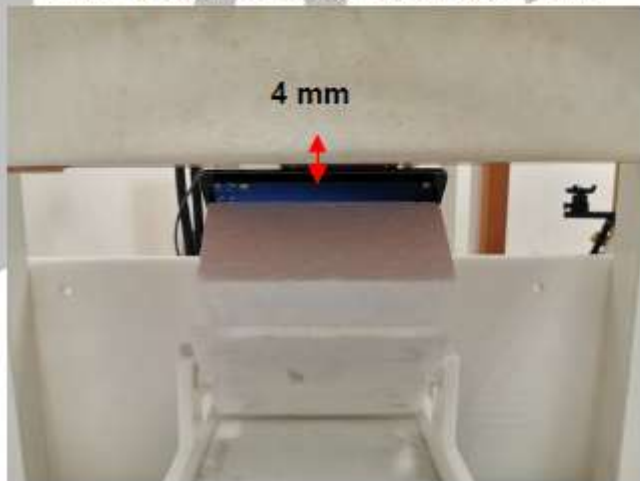
Photograph 14. Body, Back Surface, 4mm



Photograph 15. Body, Top Edge, 4mm



Photograph 16. Body, Top Edge, 4mm

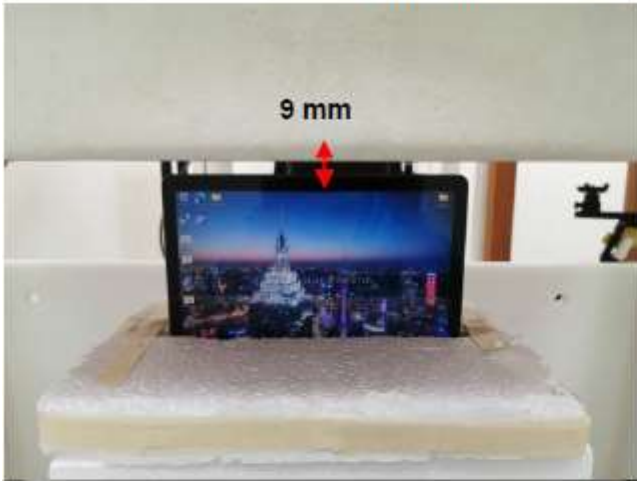


Photograph 17. Body, Top Curve Edge, 4mm

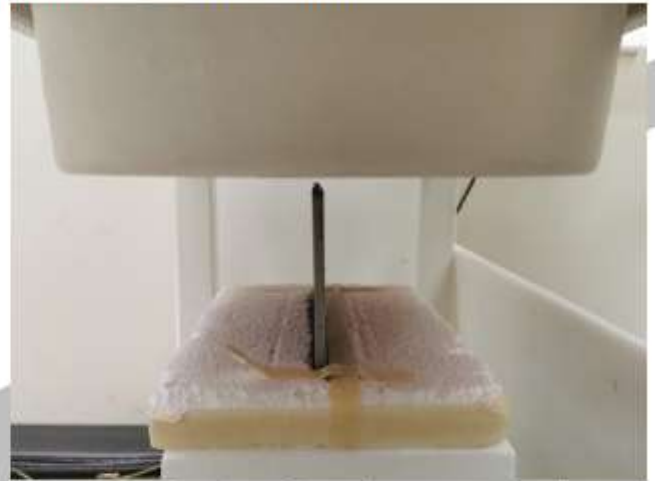


Photograph 18. Body, Top Curve Edge, 4mm

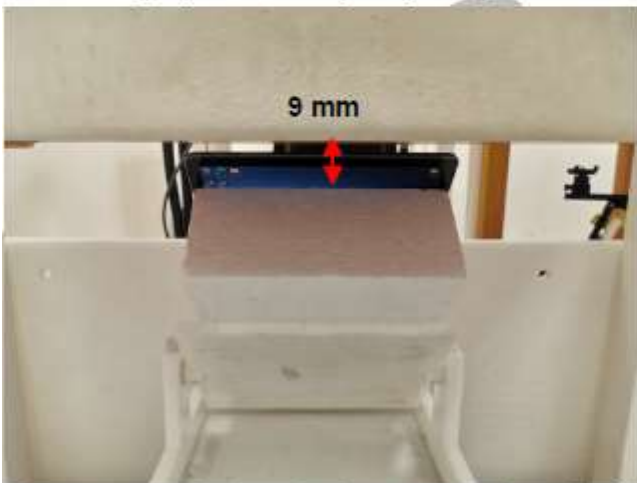
Body - distance between flat phantom and EUT is 9 mm



Photograph 19. Body, Top Edge, 9mm



Photograph 20. Body, Top Edge, 9mm

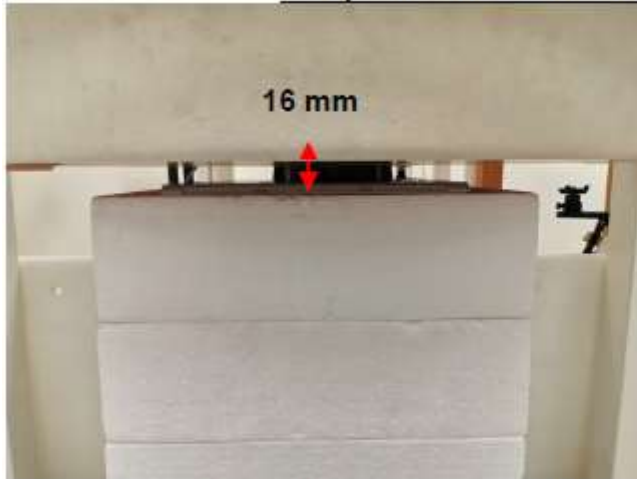


Photograph 21. Body, Top Curve Edge, 9mm



Photograph 22. Body, Top Curve Edge, 9mm

Body - distance between flat phantom and EUT is 16 mm

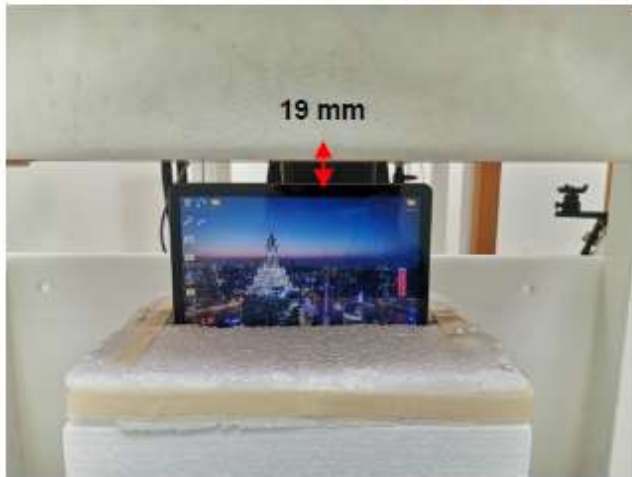


Photograph 23. Body, Back Surface, 16mm

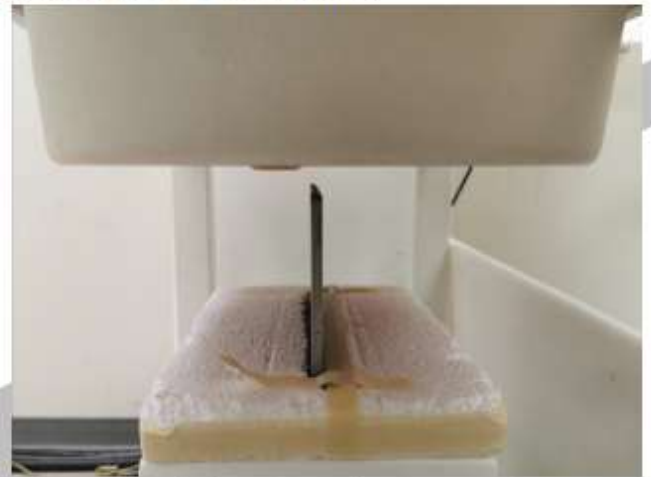


Photograph 24. Body, Back Surface, 16mm

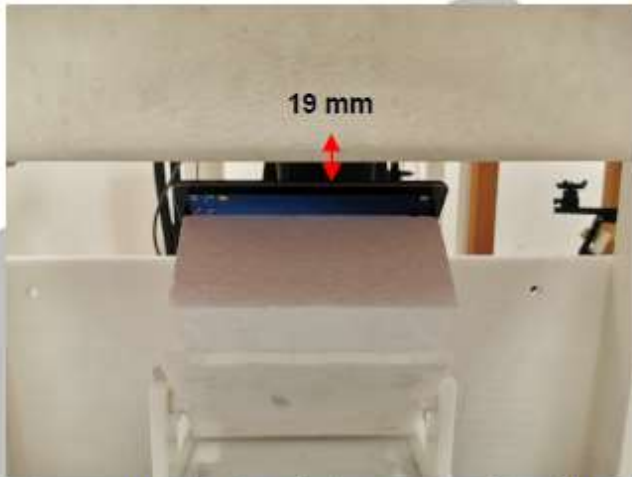
Body - distance between flat phantom and EUT is 19 mm



Photograph 25. Body, Top Edge, 19mm



Photograph 26. Body, Top Edge, 19mm



Photograph 27. Body, Top Curve Edge, 19mm



Photograph 28. Body, Top Curve Edge, 19mm



Photograph 29. Front view of EUT



Photograph 30. Back view of EUT