



# FCC SAR TEST REPORT

**FCC ID** : C3K2020  
**Equipment** : Portable Computing Device  
**Brand Name** : Microsoft  
**Model Name** : 1983  
**Applicant** : Microsoft Corporation  
One Microsoft Way Redmond, WA 98052-6399, U.S.A  
**Manufacturer** : Microsoft Corporation  
One Microsoft Way Redmond, WA 98052-6399, U.S.A  
**Standard** : FCC 47 CFR Part 2 (2.1093)

The product was received on Jul. 09, 2021 and testing was started from Aug. 01, 2021 and completed on Sep. 08, 2021. We, SPORTON INTERNATIONAL INC., would like to declare that the tested sample provide by manufacturer and the test data has been evaluated in accordance with the test procedures given in 47 CFR Part 2.1093 and FCC KDB and has been pass the FCC requirement.

The test results in this report apply exclusively to the tested model / sample. Without written approval of SPORTON INTERNATIONAL INC. EMC & Wireless Communications Laboratory, the test report shall not be reproduced except in full.

Approved by: Cona Huang / Deputy Manager



**Sporton International Inc. EMC & Wireless Communications Laboratory**  
No.52, Huaya 1st Rd., Guishan Dist., Taoyuan City 333, Taiwan



**Table of Contents**

**1. Statement of Compliance ..... 4**

**2. Guidance Applied..... 4**

**3. Equipment Under Test (EUT) Information..... 5**

    3.1 General Information ..... 5

    3.2 Sensor Triggering angle and power verification ..... 6

**4. RF Exposure Limits.....12**

    4.1 Uncontrolled Environment.....12

    4.2 Controlled Environment.....12

**5. Specific Absorption Rate (SAR).....13**

    5.1 Introduction .....13

    5.2 SAR Definition.....13

**6. System Description and Setup .....14**

    6.1 Test Site Location.....14

    6.2 E-Field Probe .....15

    6.3 Data Acquisition Electronics (DAE) .....15

    6.4 Phantom.....16

    6.5 Device Holder.....17

**7. Measurement Procedures .....18**

    7.1 Spatial Peak SAR Evaluation.....18

    7.2 Power Reference Measurement.....19

    7.3 Area Scan .....19

    7.4 Zoom Scan.....20

    7.5 Volume Scan Procedures.....21

    7.6 Power Drift Monitoring.....21

**8. Test Equipment List.....21**

**9. System Verification .....22**

    9.1 Tissue Verification .....22

    9.2 System Performance Check Results.....23

**10. RF Exposure Positions .....23**

    10.1 SAR Testing for Tablet.....23

**11. WiFi/Bluetooth Output Power (Unit: dBm).....24**

**12. Antenna Location .....36**

**13. SAR Test Results .....39**

    13.1 Body SAR .....40

    13.2 Repeated SAR Measurement .....42

**14. Simultaneous Transmission Analysis .....43**

    14.1 Body Exposure Conditions .....43

    14.2 SPLSR Evaluation and Analysis.....44

**15. Uncertainty Assessment .....45**

**16. References.....45**

**Appendix A. Plots of System Performance Check**

**Appendix B. Plots of High SAR Measurement**

**Appendix C. DASY Calibration Certificate**

**Appendix D. Test Setup Photos**



### History of this test report

Report No.	Version	Description	Issued Date
FA160324	01	Initial issue of report	Sep. 28, 2021



### 1. Statement of Compliance

The maximum results of Specific Absorption Rate (SAR) found during testing for **Microsoft Corporation, Portable Computing Device, 1983**, are as follows.

Equipment Class	Frequency Band		Highest standalone reported SAR summary	Highest Simultaneous Transmission 1g SAR (W/kg)
			Body	
			1g SAR (W/kg)	
DTS	WLAN	2.4GHz WLAN	0.93	1.55
NII		5GHz WLAN	1.16	1.28
DSS	2.4GHz Band	Bluetooth	0.18	1.28
Date of Testing:			2021/08/01 ~ 2021/09/08	

Sporton Lab is accredited to ISO 17025 by Taiwan Accreditation Foundation (TAF code: 1190) and the FCC designation No. TW1190 under the FCC 2.948(e) by Mutual Recognition Agreement (MRA) in FCC test. This device is in compliance with Specific Absorption Rate (SAR) for general population/uncontrolled exposure limits (1.6 W/kg) specified in FCC 47 CFR part 2 (2.1093) and ANSI/IEEE C95.1-1992, and had been tested in accordance with the measurement methods and procedures specified in IEEE 1528-2013 and FCC KDB publications

**Reviewed by: Jason Wang**  
**Report Producer: Daisy Peng**

### 2. Guidance Applied

The Specific Absorption Rate (SAR) testing specification, method, and procedure for this device is in accordance with the following standards, the below KDB standard may not including in the TAF code without accreditation.

- FCC 47 CFR Part 2 (2.1093)
- ANSI/IEEE C95.1-1992
- IEEE 1528-2013
- FCC KDB 865664 D01 SAR Measurement 100 MHz to 6 GHz v01r04
- FCC KDB 865664 D02 SAR Reporting v01r02
- FCC KDB 447498 D01 General RF Exposure Guidance v06
- FCC KDB 248227 D01 802.11 Wi-Fi SAR v02r02
- FCC KDB 616217 D04 SAR for laptop and tablets v01r02



### 3. Equipment Under Test (EUT) Information

#### 3.1 General Information

Product Feature & Specification	
Equipment Name	Portable Computing Device
Brand Name	Microsoft
Model Name	1983
FCC ID	C3K2020
Wireless Technology and Frequency Range	WLAN 2.4 GHz Band: 2400 MHz ~ 2483.5 MHz WLAN 5.2 GHz Band: 5150 MHz ~ 5250 MHz WLAN 5.3 GHz Band: 5250 MHz ~ 5350 MHz WLAN 5.6 GHz Band: 5470 MHz ~ 5725 MHz WLAN 5.8 GHz Band: 5725 MHz ~ 5850 MHz Bluetooth: 2400 MHz ~ 2483.5 MHz
Mode	WLAN: 802.11a/b/g/n/ac/ax HT20/HT40/VHT20/VHT40/VHT80/VHT160/HE20/HE40/HE80/HE160 Bluetooth BR/EDR/LE
EUT Stage	Identical Prototype
<b>Remark:</b>	
1. This device had two antenna vendors, RF exposure evaluation is selected ACON as the main tested, HB will spot check worst case found in ACON.	
2. EUT is a convertible PC, which has two modes: laptop mode and tablet mode. When EUT is attached with a keyboard AND the keyboard-to-EUT angle is less than 211 degrees, EUT will be in laptop (full power) mode. When EUT is NOT attached with a keyboard OR when EUT is attached with keyboard AND the keyboard-to-EUT angle is greater than 210 degrees, EUT will be in tablet (reduced power) mode.	



**3.2 Sensor Triggering angle and power verification**

**General Note:**

1. This device is convertible type notebook PC, and there have Laptop and Tablet two usage way, when end user is used different mode which the device will according current mode to limit different maximum power, according to 201911 TCBC workshop Hall effect and Gravity sensor guidance to detect lid angle for the power verification in different usage mode was following below step:

**For Lid close mode change to Tablet mode**

- Step 1: With the lid is in closed mode (0 degrees), open the screen in 10 degree steps until laptop mode is obtained
- Step 2: Lower the screen 5 degrees. Closed mode should be reobtained. If not keep lowering in 5 degree steps.
- Step 3: Open the screen in 1 degree steps until laptop mode is reobtained
- Step 4: Continue opening the screen in 1 degree steps until at least 5 degrees past where laptop mode was obtained
- Step 5: Then continue opening the screen in 10 degree steps until tablet mode is obtained
- Step 6: Power measurements should be taken at each step
- Step 7: Reverse this procedure going from tablet mode back down to closed mode

Antenna	Operation mode	Lid angle	Test Scale	802.11b ch6	802.11a 5.2G ch36
B	Lid close	0°	10°	19.33	17.25
	TB	10°	10°	12.18	8.22
		5°	5°	12.29	8.13
	Lid close	0°	1°	19.42	17.33
	TB	1°	1°	12.66	8.44
		2°	1°	12.35	8.24
		3°	1°	12.24	8.37
		4°	1°	12.38	8.33
		5°	1°	12.63	8.47
		10°	10°	12.18	8.26
		20°	10°	12.36	8.42
		30°	10°	12.22	8.48
		40°	10°	12.56	8.34
	NB	50°	10°	19.44	17.31
		45°	5°	19.53	17.44
	TB	40°	1°	12.48	8.33
	NB	41°	1°	19.52	17.42
		42°	1°	19.48	17.55
		43°	1°	19.63	17.39
		44°	1°	19.28	17.49
		45°	1°	19.58	17.50
	TB	40°	1°	12.46	8.27
		39°	1°	12.33	8.22
		38°	1°	12.42	8.26
		37°	1°	12.26	8.37
		36°	1°	12.37	8.42
		35°	1°	12.16	8.17
	NB	50°	10°	19.39	17.16
		60°	10°	19.48	17.32
		70°	10°	19.69	17.44
		80°	10°	19.34	17.18
		90°	10°	19.35	17.41
100°		10°	19.44	17.32	
110°		10°	19.28	17.68	
120°		10°	19.22	17.09	
130°		10°	19.67	17.11	
140°		10°	19.62	17.16	
150°		10°	19.52	17.15	
160°	10°	19.37	17.35		
170°	10°	19.28	17.31		



		180°	10°	19.29	17.39
		190°	10°	19.37	17.28
		200°	10°	19.52	17.26
		210°	10°	19.37	17.35
TB	220°	10°	12.33	8.32	
	215°	5°	12.47	8.44	
NB	210°	1°	19.36	17.49	
TB	211°	1°	12.21	8.22	
	212°	1°	12.12	8.31	
	213°	1°	12.35	8.45	
	214°	1°	12.23	8.24	
NB	215°	1°	12.05	8.16	
	210°	1°	19.40	17.39	
	209°	1°	19.44	17.36	
	208°	1°	19.49	17.25	
	207°	1°	19.38	17.42	
TB	206°	1°	19.62	17.39	
	205°	1°	19.56	17.49	
	220°	10°	12.15	8.32	
	230°	10°	12.33	8.33	
	240°	10°	12.32	8.41	
	250°	10°	12.30	8.24	
	260°	10°	12.29	8.42	
	270°	10°	12.27	8.34	
	280°	10°	12.50	8.00	
	290°	10°	12.45	8.34	
	300°	10°	12.49	8.33	
	310°	10°	12.35	8.26	
	320°	10°	12.35	8.34	
	330°	10°	12.38	8.42	
	340°	10°	12.36	8.21	
	350°	10°	12.44	8.33	
	360°	10°	12.37	8.36	
	350°	10°	12.29	8.38	
	340°	10°	12.28	8.41	
	330°	10°	12.28	8.43	
320°	10°	12.30	8.36		
310°	10°	12.14	8.32		
300°	10°	12.28	8.37		
290°	10°	12.47	8.42		
280°	10°	12.35	8.36		
270°	10°	12.34	8.24		
260°	10°	12.21	8.16		
250°	10°	12.28	8.26		
240°	10°	12.26	8.29		
230°	10°	12.15	8.31		
220°	10°	12.05	8.33		
NB	210°	10°	19.48	17.54	
TB	215°	5°	12.31	8.27	
	214°	1°	12.26	8.16	
	213°	1°	12.12	8.47	
	212°	1°	12.09	8.49	
211°	1°	12.26	8.26		
NB	210°	1°	19.38	17.88	
	209°	1°	19.66	17.66	
	208°	1°	19.74	17.78	



		207°	1°	19.38	17.84	
		206°	1°	19.25	17.62	
		205°	1°	19.38	17.59	
	NB		200°	10°	19.44	17.68
			190°	10°	19.52	17.24
			180°	10°	19.42	17.62
			170°	10°	19.50	17.33
			160°	10°	19.51	17.26
			150°	10°	19.67	17.42
			140°	10°	19.51	17.39
			130°	10°	19.63	17.58
			120°	10°	19.47	17.34
			110°	10°	19.48	17.42
			100°	10°	19.59	17.63
			90°	10°	19.57	17.26
			80°	10°	19.37	17.48
			70°	10°	19.46	17.39
			60°	10°	19.38	17.47
	50°	10°	19.28	17.59		
	TB		40°	10°	12.46	8.33
			45°	5°	12.45	8.16
	NB		50°	1°	19.27	17.13
	TB		49°	1°	12.36	8.16
			48°	1°	12.28	8.48
			47°	1°	12.39	8.26
			46°	1°	12.49	8.19
			45°	1°	12.39	8.18
	NB		50°	1°	19.27	17.13
			51°	1°	19.33	17.33
			52°	1°	19.42	17.42
			53°	1°	19.48	17.26
54°			1°	19.62	17.37	
TB		55	1°	19.27	17.13	
		40°	10°	12.35	8.27	
		30°	10°	12.37	8.26	
		20°	10°	12.48	8.34	
		10°	10°	12.47	8.27	
Lid close		0°	10°	19.42	17.43	
TB		5°	5°	12.11	8.22	
		4°	1°	12.32	8.27	
		3°	1°	12.19	8.29	
		2°	1°	12.28	8.37	
		1°	1°	12.38	8.16	
Lid close		0°	1°	19.37	17.36	





Antenna	Operation mode	Lid angle	Test Scale	802.11b ch6	802.11a 5.2G ch36
A	Lid close	0°	10°	19.47	17.04
	TB	10°	10°	12.13	8.74
		5°	5°	12.15	8.77
	Lid close	0°	1°	19.33	17.33
	TB	1°	1°	12.35	8.68
		2°	1°	12.48	8.55
		3°	1°	12.63	8.49
		4°	1°	12.38	8.62
		5°	1°	12.52	8.47
		10°	10°	12.13	8.74
		20°	10°	12.28	8.50
		30°	10°	12.15	8.43
		40°	10°	12.31	8.59
	NB	50°	10°	19.26	17.44
		45°	5°	19.37	17.43
	TB	40°	1°	12.43	8.52
	NB	41°	1°	19.55	17.33
		42°	1°	19.52	17.44
		43°	1°	19.36	17.42
		44°	1°	19.47	17.39
		45°	1°	19.38	17.52
	TB	40°	1°	12.66	8.44
		39°	1°	12.42	8.68
		38°	1°	12.58	8.77
		37°	1°	12.39	8.74
		36°	1°	12.41	8.48
		35°	1°	12.37	8.62
	NB	50°	10°	19.38	17.44
		60°	10°	19.19	17.35
		70°	10°	19.84	17.31
		80°	10°	19.42	17.25
		90°	10°	19.66	17.29
		100°	10°	19.25	17.15
		110°	10°	19.48	17.16
		120°	10°	19.38	17.1
		130°	10°	19.47	17.05
		140°	10°	19.39	17.06
		150°	10°	19.48	17.09
		160°	10°	19.38	17.22
		170°	10°	19.25	17.28
		180°	10°	19.22	17.23
		190°	10°	19.11	17.16
TB	200°	10°	19.63	17.11	
	210°	10°	19.62	17.35	
TB	220°	10°	12.33	8.63	
	215°	5°	12.48	8.57	
NB	210°	1°	19.52	17.33	
TB	211°	1°	12.20	8.85	
	212°	1°	12.03	8.61	
	213°	1°	12.12	8.74	
	214°	1°	12.25	8.56	
	215°	1°	12.17	8.88	
NB	210°	1°	19.44	17.33	
	209°	1°	19.38	17.44	



		208°	1°	19.62	17.26
		207°	1°	19.74	17.37
		206°	1°	19.74	17.41
		205°	1°	19.62	17.63
	TB	220°	10°	12.18	8.65
		230°	10°	12.02	8.65
		240°	10°	12.04	8.69
		250°	10°	12.11	8.63
		260°	10°	12.18	8.75
		270°	10°	12.06	8.53
		280°	10°	12.00	8.88
		290°	10°	12.06	8.86
		300°	10°	12.05	8.81
		310°	10°	12.16	8.83
		320°	10°	12.22	8.59
		330°	10°	12.28	8.66
		340°	10°	12.20	8.62
		350°	10°	12.06	8.69
		360°	10°	12.04	8.71
		350°	10°	12.14	8.77
		340°	10°	12.11	8.74
		330°	10°	12.16	8.59
		320°	10°	12.06	8.63
		310°	10°	12.08	8.63
		300°	10°	12.08	8.73
		290°	10°	12.09	8.71
		280°	10°	12.10	8.81
	270°	10°	12.05	8.69	
	260°	10°	12.06	8.68	
	250°	10°	12.23	8.66	
	240°	10°	12.26	8.68	
	230°	10°	12.29	8.64	
	220°	10°	12.22	8.83	
	NB	210°	10°	19.47	17.44
	TB	215°	5°	12.42	8.8
		214°	1°	12.11	8.81
		213°	1°	12.37	8.79
		212°	1°	12.41	8.61
		211°	1°	12.26	8.74
	NB	210°	1°	19.47	17.66
		209°	1°	19.44	17.55
		208°	1°	19.42	17.42
		207°	1°	19.52	17.39
		206°	1°	19.63	17.64
		205°	1°	19.84	17.21
	NB	200°	10°	19.63	17.58
		190°	10°	19.25	17.62
		180°	10°	19.42	17.42
		170°	10°	19.39	17.26
		160°	10°	19.42	17.36
		150°	10°	19.25	17.74
		140°	10°	19.39	17.58
		130°	10°	19.48	17.63
		120°	10°	19.62	17.24
		110°	10°	19.31	17.61
	100°	10°	19.28	17.62	



		90°	10°	19.39	17.42	
		80°	10°	19.48	17.52	
		70°	10°	19.63	17.53	
		60°	10°	19.24	17.46	
		50°	10°	19.28	17.61	
	TB	40°	10°	12.48	8.36	
		45°	5°	12.28	8.62	
	NB	50°	1°	19.28	17.44	
	TB	49°	1°	12.26	8.26	
		48°	1°	12.24	8.33	
		47°	1°	12.37	8.71	
		46°	1°	12.62	8.26	
		45°	1°	12.28	8.68	
	NB	50°	1°	19.28	17.44	
		51°	1°	19.24	17.26	
		52°	1°	19.36	17.34	
		53°	1°	19.24	17.62	
		54°	1°	19.74	17.53	
	TB	55	1°	19.28	17.44	
		40°	10°	12.37	8.44	
		30°	10°	12.14	8.36	
		20°	10°	12.12	8.51	
	Lid close	10°	10°	12.34	8.37	
		0°	10°	19.27	17.22	
		TB	5°	5°	12.42	8.33
			4°	1°	12.38	8.42
	3°		1°	12.22	8.74	
2°	1°		12.38	8.26		
1°	1°		12.74	8.59		
Lid close	0°	1°	19.38	17.47		



**4. RF Exposure Limits**

**4.1 Uncontrolled Environment**

Uncontrolled Environments are defined as locations where there is the exposure of individuals who have no knowledge or control of their exposure. The general population/uncontrolled exposure limits are applicable to situations in which the general public may be exposed or in which persons who are exposed as a consequence of their employment may not be made fully aware of the potential for exposure or cannot exercise control over their exposure. Members of the general public would come under this category when exposure is not employment-related; for example, in the case of a wireless transmitter that exposes persons in its vicinity.

**4.2 Controlled Environment**

Controlled Environments are defined as locations where there is exposure that may be incurred by persons who are aware of the potential for exposure, (i.e. as a result of employment or occupation). In general, occupational/controlled exposure limits are applicable to situations in which persons are exposed as a consequence of their employment, who have been made fully aware of the potential for exposure and can exercise control over their exposure. The exposure category is also applicable when the exposure is of a transient nature due to incidental passage through a location where the exposure levels may be higher than the general population/uncontrolled limits, but the exposed person is fully aware of the potential for exposure and can exercise control over his or her exposure by leaving the area or by some other appropriate means.

**Limits for Occupational/Controlled Exposure (W/kg)**

Whole-Body	Partial-Body	Hands, Wrists, Feet and Ankles
0.4	8.0	20.0

**Limits for General Population/Uncontrolled Exposure (W/kg)**

Whole-Body	Partial-Body	Hands, Wrists, Feet and Ankles
0.08	1.6	4.0

1. Whole-Body SAR is averaged over the entire body, partial-body SAR is averaged over any 1gram of tissue defined as a tissue volume in the shape of a cube. SAR for hands, wrists, feet and ankles is averaged over any 10 grams of tissue defined as a tissue volume in the shape of a cube.

## **5. Specific Absorption Rate (SAR)**

### **5.1 Introduction**

SAR is related to the rate at which energy is absorbed per unit mass in an object exposed to a radio field. The SAR distribution in a biological body is complicated and is usually carried out by experimental techniques or numerical modeling. The standard recommends limits for two tiers of groups, occupational/controlled and general population/uncontrolled, based on a person's awareness and ability to exercise control over his or her exposure. In general, occupational/controlled exposure limits are higher than the limits for general population/uncontrolled.

### **5.2 SAR Definition**

The SAR definition is the time derivative (rate) of the incremental energy (dW) absorbed by (dissipated in) an incremental mass (dm) contained in a volume element (dv) of a given density ( $\rho$ ). The equation description is as below:

$$SAR = \frac{d}{dt} \left( \frac{dW}{dm} \right) = \frac{d}{dt} \left( \frac{dW}{\rho dv} \right)$$

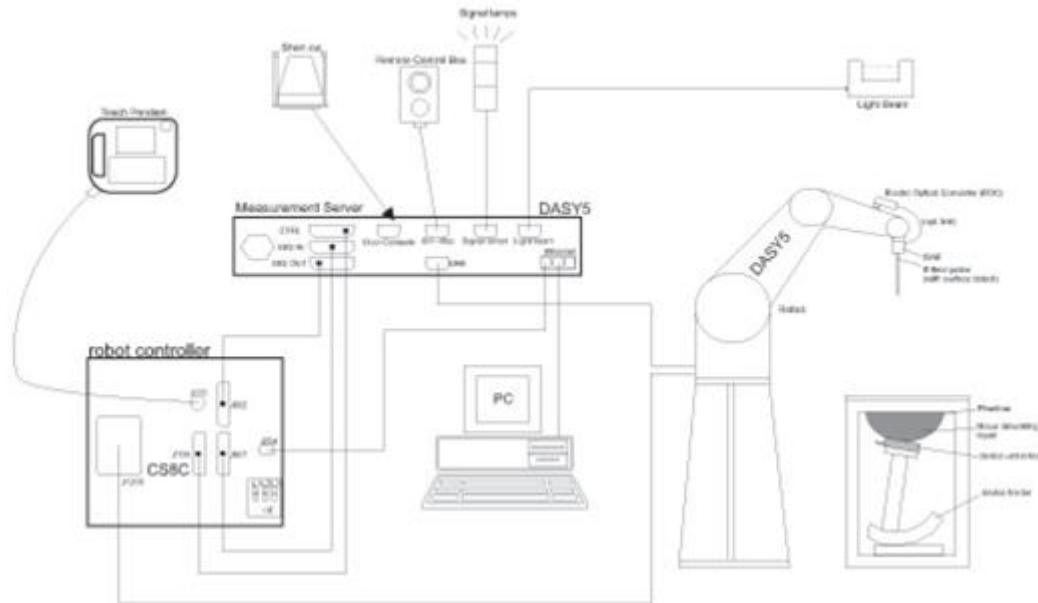
SAR is expressed in units of Watts per kilogram (W/kg)

$$SAR = \frac{\sigma |E|^2}{\rho}$$

Where:  $\sigma$  is the conductivity of the tissue,  $\rho$  is the mass density of the tissue and E is the RMS electrical field strength.

## 6. System Description and Setup

The DASY system used for performing compliance tests consists of the following items:



- A standard high precision 6-axis robot with controller, teach pendant and software. An arm extension for accommodating the data acquisition electronics (DAE).
- An isotropic Field probe optimized and calibrated for the targeted measurement.
- A data acquisition electronics (DAE) which performs the signal amplification, signal multiplexing, AD-conversion, offset measurements, mechanical surface detection, collision detection, etc. The unit is battery powered with standard or rechargeable batteries. The signal is optically transmitted to the EOC.
- The Electro-optical converter (EOC) performs the conversion from optical to electrical signals for the digital communication to the DAE. To use optical surface detection, a special version of the EOC is required. The EOC signal is transmitted to the measurement server.
- The function of the measurement server is to perform the time critical tasks such as signal filtering, control of the robot operation and fast movement interrupts.
- The Light Beam used is for probe alignment. This improves the (absolute) accuracy of the probe positioning.
- A computer running WinXP or Win7 and the DASY5 software.
- Remote control and teach pendant as well as additional circuitry for robot safety such as warning lamps, etc.
- The phantom, the device holder and other accessories according to the targeted measurement.

### 6.1 Test Site Location


The SAR measurement facilities used to collect data are within both Sporton Lab list below test site location are accredited to ISO 17025 by Taiwan Accreditation Foundation (TAF code: 1190 and 3786) and the FCC designation No. TW1190 and TW3786 under the FCC 2.948(e) by Mutual Recognition Agreement (MRA) in FCC test.

Test Site	EMC & Wireless Communications Laboratory		Wensan Laboratory		
Test Site Location	TW1190 No.52, Huaya 1st Rd., Guishan Dist., Taoyuan City 333, Taiwan		TW3786 No.58, Aly. 75, Ln. 564, Wenhua 3rd, Rd., Guishan Dist., Taoyuan City 333010, Taiwan		
Test Site No.	SAR01-HY	SAR03-HY	SAR08-HY	SAR09-HY	SAR15-HY
	SAR04-HY	SAR05-HY	SAR11-HY	SAR12-HY	
	SAR06-HY	SAR10-HY	SAR13-HY	SAR14-HY	


**6.2 E-Field Probe**

The SAR measurement is conducted with the dosimetric probe (manufactured by SPEAG). The probe is specially designed and calibrated for use in liquid with high permittivity. The dosimetric probe has special calibration in liquid at different frequency. This probe has a built in optical surface detection system to prevent from collision with phantom.

**<ES3DV3 Probe>**

Construction	Symmetric design with triangular core Interleaved sensors Built-in shielding against static charges PEEK enclosure material (resistant to organic solvents, e.g., DGBE)	
Frequency	10 MHz – 4 GHz; Linearity: $\pm 0.2$ dB (30 MHz – 4 GHz)	
Directivity	$\pm 0.2$ dB in TSL (rotation around probe axis) $\pm 0.3$ dB in TSL (rotation normal to probe axis)	
Dynamic Range	5 $\mu$ W/g – >100 mW/g; Linearity: $\pm 0.2$ dB	
Dimensions	Overall length: 337 mm (tip: 20 mm) Tip diameter: 3.9 mm (body: 12 mm) Distance from probe tip to dipole centers: 3.0 mm	

**<EX3DV4 Probe>**

Construction	Symmetric design with triangular core Built-in shielding against static charges PEEK enclosure material (resistant to organic solvents, e.g., DGBE)	
Frequency	10 MHz – >6 GHz Linearity: $\pm 0.2$ dB (30 MHz – 6 GHz)	
Directivity	$\pm 0.3$ dB in TSL (rotation around probe axis) $\pm 0.5$ dB in TSL (rotation normal to probe axis)	
Dynamic Range	10 $\mu$ W/g – >100 mW/g Linearity: $\pm 0.2$ dB (noise: typically <1 $\mu$ W/g)	
Dimensions	Overall length: 337 mm (tip: 20 mm) Tip diameter: 2.5 mm (body: 12 mm) Typical distance from probe tip to dipole centers: 1 mm	

**6.3 Data Acquisition Electronics (DAE)**

The data acquisition electronics (DAE) consists of a highly sensitive electrometer-grade preamplifier with auto-zeroing, a channel and gain-switching multiplexer, a fast 16 bit AD-converter and a command decoder and control logic unit. Transmission to the measurement server is accomplished through an optical downlink for data and status information as well as an optical uplink for commands and the clock.

The input impedance of the DAE is 200 MOhm; the inputs are symmetrical and floating. Common mode rejection is above 80 dB.



**Fig 5.1** Photo of DAE

**6.4 Phantom**

**<SAM Twin Phantom>**

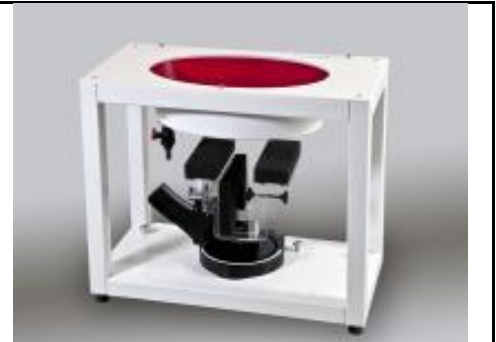
Shell Thickness	2 ± 0.2 mm; Center ear point: 6 ± 0.2 mm
Filling Volume	Approx. 25 liters
Dimensions	Length: 1000 mm; Width: 500 mm; Height: adjustable feet
Measurement Areas	Left Hand, Right Hand, Flat Phantom



The bottom plate contains three pair of bolts for locking the device holder. The device holder positions are adjusted to the standard measurement positions in the three sections. A white cover is provided to tap the phantom during off-periods to prevent water evaporation and changes in the liquid parameters. On the phantom top, three reference markers are provided to identify the phantom position with respect to the robot.

**<ELI Phantom>**

Shell Thickness	2 ± 0.2 mm (sagging: <1%)
Filling Volume	Approx. 30 liters
Dimensions	Major ellipse axis: 600 mm Minor axis: 400 mm



The ELI phantom is intended for compliance testing of handheld and body-mounted wireless devices in the frequency range of 30 MHz to 6 GHz. ELI4 is fully compatible with standard and all known tissue simulating liquids.



## **6.5 Device Holder**

### **<Mounting Device for Hand-Held Transmitter>**

In combination with the Twin SAM V5.0/V5.0c or ELI phantoms, the Mounting Device for Hand-Held Transmitters enables rotation of the mounted transmitter device to specified spherical coordinates. At the heads, the rotation axis is at the ear opening. Transmitter devices can be easily and accurately positioned according to IEC 62209-1, IEEE 1528, FCC, or other specifications. The device holder can be locked for positioning at different phantom sections (left head, right head, flat). And upgrade kit to Mounting Device to enable easy mounting of wider devices like big smart-phones, e-books, small tablets, etc. It holds devices with width up to 140 mm.



Mounting Device for Hand-Held Transmitters



Mounting Device Adaptor for Wide-Phones

### **<Mounting Device for Laptops and other Body-Worn Transmitters>**

The extension is lightweight and made of POM, acrylic glass and foam. It fits easily on the upper part of the mounting device in place of the phone positioned. The extension is fully compatible with the SAM Twin and ELI phantoms.



Mounting Device for Laptops

## **7. Measurement Procedures**

The measurement procedures are as follows:

### <Conducted power measurement>

- (a) For WWAN power measurement, use base station simulator to configure EUT WWAN transmission in conducted connection with RF cable, at maximum power in each supported wireless interface and frequency band.
- (b) Read the WWAN RF power level from the base station simulator.
- (c) For WLAN/BT power measurement, use engineering software to configure EUT WLAN/BT continuously transmission, at maximum RF power in each supported wireless interface and frequency band
- (d) Connect EUT RF port through RF cable to the power meter, and measure WLAN/BT output power

### <SAR measurement>

- (a) Use base station simulator to configure EUT WWAN transmission in radiated connection, and engineering software to configure EUT WLAN/BT continuously transmission, at maximum RF power, in the highest power channel.
- (b) Place the EUT in the positions as Appendix D demonstrates.
- (c) Set scan area, grid size and other setting on the DASY software.
- (d) Measure SAR results for the highest power channel on each testing position.
- (e) Find out the largest SAR result on these testing positions of each band
- (f) Measure SAR results for other channels in worst SAR testing position if the reported SAR of highest power channel is larger than 0.8 W/kg

According to the test standard, the recommended procedure for assessing the peak spatial-average SAR value consists of the following steps:

- (a) Power reference measurement
- (b) Area scan
- (c) Zoom scan
- (d) Power drift measurement

### **7.1 Spatial Peak SAR Evaluation**

The procedure for spatial peak SAR evaluation has been implemented according to the test standard. It can be conducted for 1g and 10g, as well as for user-specific masses. The DASY software includes all numerical procedures necessary to evaluate the spatial peak SAR value.

The base for the evaluation is a "cube" measurement. The measured volume must include the 1g and 10g cubes with the highest averaged SAR values. For that purpose, the center of the measured volume is aligned to the interpolated peak SAR value of a previously performed area scan.

The entire evaluation of the spatial peak values is performed within the post-processing engine (SEMCAD). The system always gives the maximum values for the 1g and 10g cubes. The algorithm to find the cube with highest averaged SAR is divided into the following stages:

- (a) Extraction of the measured data (grid and values) from the Zoom Scan
- (b) Calculation of the SAR value at every measurement point based on all stored data (A/D values and measurement parameters)
- (c) Generation of a high-resolution mesh within the measured volume
- (d) Interpolation of all measured values from the measurement grid to the high-resolution grid
- (e) Extrapolation of the entire 3-D field distribution to the phantom surface over the distance from sensor to surface
- (f) Calculation of the averaged SAR within masses of 1g and 10g

**7.2 Power Reference Measurement**

The Power Reference Measurement and Power Drift Measurements are for monitoring the power drift of the device under test in the batch process. The minimum distance of probe sensors to surface determines the closest measurement point to phantom surface. This distance cannot be smaller than the distance of sensor calibration points to probe tip as defined in the probe properties.

**7.3 Area Scan**

The area scan is used as a fast scan in two dimensions to find the area of high field values, before doing a fine measurement around the hot spot. The sophisticated interpolation routines implemented in DASY software can find the maximum found in the scanned area, within a range of the global maximum. The range (in dB0 is specified in the standards for compliance testing. For example, a 2 dB range is required in IEEE standard 1528 and IEC 62209 standards, whereby 3 dB is a requirement when compliance is assessed in accordance with the ARIB standard (Japan), if only one zoom scan follows the area scan, then only the absolute maximum will be taken as reference. For cases where multiple maximums are detected, the number of zoom scans has to be increased accordingly.

Area scan parameters extracted from FCC KDB 865664 D01v01r04 SAR measurement 100 MHz to 6 GHz.

	≤ 3 GHz	> 3 GHz
Maximum distance from closest measurement point (geometric center of probe sensors) to phantom surface	5 ± 1 mm	$\frac{1}{2} \cdot \delta \cdot \ln(2) \pm 0.5$ mm
Maximum probe angle from probe axis to phantom surface normal at the measurement location	30° ± 1°	20° ± 1°
Maximum area scan spatial resolution: $\Delta x_{Area}, \Delta y_{Area}$	≤ 2 GHz: ≤ 15 mm 2 – 3 GHz: ≤ 12 mm	3 – 4 GHz: ≤ 12 mm 4 – 6 GHz: ≤ 10 mm
	When the x or y dimension of the test device, in the measurement plane orientation, is smaller than the above, the measurement resolution must be ≤ the corresponding x or y dimension of the test device with at least one measurement point on the test device.	

**7.4 Zoom Scan**

Zoom scans are used assess the peak spatial SAR values within a cubic averaging volume containing 1 gram and 10 gram of simulated tissue. The zoom scan measures points (refer to table below) within a cube shoes base faces are centered on the maxima found in a preceding area scan job within the same procedure. When the measurement is done, the zoom scan evaluates the averaged SAR for 1 gram and 10 gram and displays these values next to the job's label.

Zoom scan parameters extracted from FCC KDB 865664 D01v01r04 SAR measurement 100 MHz to 6 GHz.

		≤ 3 GHz	> 3 GHz
Maximum zoom scan spatial resolution: $\Delta x_{Zoom}, \Delta y_{Zoom}$		$\leq 2$ GHz: $\leq 8$ mm $2 - 3$ GHz: $\leq 5$ mm*	$3 - 4$ GHz: $\leq 5$ mm* $4 - 6$ GHz: $\leq 4$ mm*
Maximum zoom scan spatial resolution, normal to phantom surface	uniform grid: $\Delta z_{Zoom}(n)$	$\leq 5$ mm	$3 - 4$ GHz: $\leq 4$ mm $4 - 5$ GHz: $\leq 3$ mm $5 - 6$ GHz: $\leq 2$ mm
	graded grid	$\Delta z_{Zoom}(1)$ : between 1 <sup>st</sup> two points closest to phantom surface	$\leq 4$ mm  $3 - 4$ GHz: $\leq 3$ mm $4 - 5$ GHz: $\leq 2.5$ mm $5 - 6$ GHz: $\leq 2$ mm
		$\Delta z_{Zoom}(n>1)$ : between subsequent points	$\leq 1.5 \cdot \Delta z_{Zoom}(n-1)$
Minimum zoom scan volume	x, y, z	$\geq 30$ mm	$3 - 4$ GHz: $\geq 28$ mm $4 - 5$ GHz: $\geq 25$ mm $5 - 6$ GHz: $\geq 22$ mm
Note: $\delta$ is the penetration depth of a plane-wave at normal incidence to the tissue medium; see draft standard IEEE P1528-2011 for details. * When zoom scan is required and the <i>reported</i> SAR from the <i>area scan based 1-g SAR estimation</i> procedures of KDB 447498 is $\leq 1.4$ W/kg, $\leq 8$ mm, $\leq 7$ mm and $\leq 5$ mm zoom scan resolution may be applied, respectively, for 2 GHz to 3 GHz, 3 GHz to 4 GHz and 4 GHz to 6 GHz.			



**7.5 Volume Scan Procedures**

The volume scan is used for assess overlapping SAR distributions for antennas transmitting in different frequency bands. It is equivalent to an oversized zoom scan used in standalone measurements. The measurement volume will be used to enclose all the simultaneous transmitting antennas. For antennas transmitting simultaneously in different frequency bands, the volume scan is measured separately in each frequency band. In order to sum correctly to compute the 1g aggregate SAR, the EUT remain in the same test position for all measurements and all volume scan use the same spatial resolution and grid spacing. When all volume scan were completed, the software, SEMCAD postprocessor can combine and subsequently superpose these measurement data to calculating the multiband SAR.

**7.6 Power Drift Monitoring**

All SAR testing is under the EUT install full charged battery and transmit maximum output power. In DASY measurement software, the power reference measurement and power drift measurement procedures are used for monitoring the power drift of EUT during SAR test. Both these procedures measure the field at a specified reference position before and after the SAR testing. The software will calculate the field difference in dB. If the power drifts more than 5%, the SAR will be retested.

**8. Test Equipment List**

Manufacturer	Name of Equipment	Type/Model	Serial Number	Calibration	
				Last Cal.	Due Date
SPEAG	2450MHz System Validation Kit	D2450V2	736	Aug. 31, 2018	Aug. 28, 2021
SPEAG	2450MHz System Validation Kit	D2450V2	929	Nov. 21, 2019	Nov. 19, 2021
SPEAG	5GHz System Validation Kit	D5GHzV2	1006	Sep. 27, 2018	Sep. 24, 2021
SPEAG	Data Acquisition Electronics	DAE4	699	Feb. 16, 2021	Feb. 15, 2022
SPEAG	Dosimetric E-Field Probe	EX3DV4	3976	Jan. 27, 2021	Jan. 26, 2022
SPEAG	Dosimetric E-Field Probe	EX3DV4	7306	Jul. 26, 2021	Jul. 25, 2022
RCPTWN	Thermometer	HTC-1	TM685-1	Nov. 10, 2020	Nov. 09, 2021
RCPTWN	Thermometer	HTC-1	TM560-2	Nov. 10, 2020	Nov. 09, 2021
R&S	BT Base Station	CBT	100815	Feb. 19, 2021	Feb. 18, 2022
SPEAG	Device Holder	N/A	N/A	N/A	N/A
Anritsu	Signal Generator	MG3710A	6201502524	Nov. 11, 2020	Nov. 10, 2021
Keysight	ENA Network Analyzer	E5071C	MY46316648	Jul. 22, 2021	Jul. 21, 2022
SPEAG	Dielectric Probe Kit	DAK-3.5	1126	Sep. 16, 2020	Sep. 15, 2021
LINE SEIKI	Digital Thermometer	DTM3000-spezial	2942	Nov. 06, 2020	Nov. 05, 2021
Anritsu	Power Meter	ML2496A	2119003	Jun. 09, 2021	Jun. 08, 2022
Anritsu	Power Sensor	MA2411B	1911333	Jun. 01, 2021	May. 31, 2022
Anritsu	Power Meter	ML2495A	1804003	Oct. 21, 2020	Oct. 20, 2021
Anritsu	Power Sensor	MA2411B	1726150	Oct. 21, 2020	Oct. 20, 2021
Anritsu	Spectrum Analyzer	MS2830A	6201396378	Jul. 16, 2021	Jul. 15, 2022
Anritsu	Spectrum Analyzer	N9010A	MY53470118	Jan. 15, 2021	Jan. 14, 2022
Mini-Circuits	Power Amplifier	ZVE-8G+	6418	Oct. 21, 2020	Oct. 20, 2021
Mini-Circuits	Power Amplifier	ZHL-42W+	715701915	May. 11, 2021	May. 10, 2022
ATM	Dual Directional Coupler	C122H-10	P610410z-02	Note 1	
Woken	Attenuator 1	WK0602-XX	N/A	Note 1	
PE	Attenuator 2	PE7005-10	N/A	Note 1	
PE	Attenuator 3	PE7005- 3	N/A	Note 1	

**General Note:**

1. Prior to system verification and validation, the path loss from the signal generator to the system check source and the power meter, which includes the amplifier, cable, attenuator and directional coupler, was measured by the network analyzer. The reading of the power meter was offset by the path loss difference between the path to the power meter and the path to the system check source to monitor the actual power level fed to the system check source.
2. The dipole calibration interval can be extended to 3 years with justification according to KDB 865664 D01. The dipoles are also not physically damaged, or repaired during the interval. The justification data in appendix C can be found which the return loss is < -20dB, within 20% of prior calibration, the impedance is within 5 ohm of prior calibration for each dipole.



### 9. System Verification

#### 9.1 Tissue Verification

The tissue dielectric parameters of tissue-equivalent media used for SAR measurements must be characterized within a temperature range of 18°C to 25°C, measured with calibrated instruments and apparatuses, such as network analyzers and temperature probes. The temperature of the tissue-equivalent medium during SAR measurement must also be within 18°C to 25°C and within ± 2°C of the temperature when the tissue parameters are characterized. The tissue dielectric measurement system must be calibrated before use. The dielectric parameters must be measured before the tissue-equivalent medium is used in a series of SAR measurements.

The liquid tissue depth was at least 15cm in the phantom for all SAR testing

#### <Tissue Dielectric Parameter Check Results>

Frequency (MHz)	Liquid Temp. (°C)	Conductivity (σ)	Permittivity (ε <sub>r</sub> )	Conductivity Target (σ)	Permittivity Target (ε <sub>r</sub> )	Delta (σ) (%)	Delta (ε <sub>r</sub> ) (%)	Limit (%)	Date
2450	22.4	1.766	38.835	1.80	39.20	-1.89	-0.93	±5	2021/8/1
2450	22.4	1.824	39.562	1.80	39.20	1.33	0.92	±5	2021/9/8
5250	22.4	4.540	36.809	4.71	35.95	-3.61	2.39	±5	2021/8/2
5250	22.8	4.838	36.713	4.71	35.95	2.72	2.12	±5	2021/9/8
5600	22.4	4.881	36.368	5.07	35.50	-3.73	2.45	±5	2021/8/2
5600	22.8	5.209	36.166	5.07	35.50	2.74	1.88	±5	2021/9/8
5750	22.4	5.041	36.167	5.22	35.35	-3.43	2.31	±5	2021/8/2
5750	22.8	5.376	35.949	5.22	35.35	2.99	1.69	±5	2021/9/8

**9.2 System Performance Check Results**

Comparing to the original SAR value provided by SPEAG, the verification data should be within its specification of 10 %. Below table shows the target SAR and measured SAR after normalized to 1W input power. The table below indicates the system performance check can meet the variation criterion and the plots can be referred to Appendix A of this report.

Test Site	Date	Frequency (MHz) <sup>2</sup>	Input Power (mW)	Dipole S/N	Probe S/N	DAE S/N	Measured 1g SAR (W/kg)	Targeted 1g SAR (W/kg)	Normalized 1g SAR (W/kg)	Deviation (%)
SAR04-HY	2021/8/1	2450	50	D2450V2-736	EX3DV4 - SN3976	DAE4 Sn699	2.56	52.70	51.2	-2.85
SAR06-HY	2021/9/8	2450	250	D2450V2-929	EX3DV4 - SN7306	DAE4 Sn699	12.50	53.10	50	-5.84
SAR04-HY	2021/8/2	5250	50	D5GHzV2-1006-5250	EX3DV4 - SN3976	DAE4 Sn699	4.00	80.70	80	-0.87
SAR06-HY	2021/9/8	5250	100	D5GHzV2-1006-5250	EX3DV4 - SN7306	DAE4 Sn699	8.16	80.70	81.6	1.12
SAR04-HY	2021/8/2	5600	50	D5GHzV2-1006-5600	EX3DV4 - SN3976	DAE4 Sn699	4.17	83.30	83.4	0.12
SAR06-HY	2021/9/8	5600	100	D5GHzV2-1006-5600	EX3DV4 - SN7306	DAE4 Sn699	8.89	83.30	88.9	6.72
SAR04-HY	2021/8/2	5750	50	D5GHzV2-1006-5750	EX3DV4 - SN3976	DAE4 Sn699	3.85	80.40	77	-4.23
SAR06-HY	2021/9/8	5750	100	D5GHzV2-1006-5750	EX3DV4 - SN7306	DAE4 Sn699	7.99	80.40	79.9	-0.62

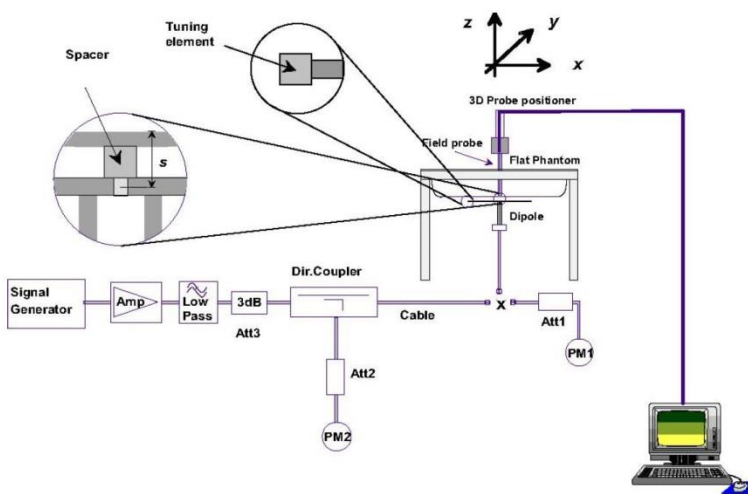


Fig 8.3.1 System Performance Check Setup



Fig 8.3.2 Setup Photo

**10. RF Exposure Positions**

**10.1 SAR Testing for Tablet**

This device can be used also in full sized tablet exposure conditions, due to its size. Per FCC KDB 616217, the back surface and edges of the tablet should be tested for SAR compliance with the tablet touching the phantom. The SAR exclusion threshold in KDB 447498 D01v06 can be applied to determine SAR test exclusion for adjacent edge configurations. The closest distance from the antenna to an adjacent tablet edge is used to determine if SAR testing is required for the adjacent edges, with the adjacent edge positioned against the phantom and the edge containing the antenna positioned perpendicular to the phantom.



## 11. WiFi/Bluetooth Output Power (Unit: dBm)

### General Note:

1. For each antenna, transmit power in SISO per chain operation is larger than (or equal to) the power in MIMO per chain operation, RF exposure compliance of MIMO mode can be deduced from the compliance simultaneous transmission of antennas operating in SISO mode.
2. Per KDB 248227 D01v02r02, the simultaneous SAR provisions in KDB publication 447498 should be applied to determine simultaneous transmission SAR test exclusion for WiFi MIMO. If the sum of 1g single transmission chain SAR measurements is  $< 1.6\text{W/kg}$  and SAR peak to location ratio  $\leq 0.04$ , no additional SAR measurements for MIMO.
3. The maximum output power specified for production units are determined for all applicable 802.11 transmission modes in each standalone and aggregated frequency band. Maximum output power is measured for the highest maximum output power configuration(s) in each frequency band according to the default power measurement procedures. For "Not required", SAR Test reduction was applied from KDB 248227 guidance, Sec. 2.1, b), 1) when the same maximum power is specified for multiple transmission modes in a frequency band, the largest channel bandwidth, lowest order modulation, lowest data rate and lowest order 802.11a/g/n/ac mode is used for SAR measurement, on the highest measured output power channel in the initial test configuration, for each frequency band or when MIMO mode was not performed, due to for each antenna, transmit power in SISO operation is larger than (or equal to) the power in MIMO operation, RF exposure compliance of MIMO mode can be deduced from the compliance simultaneous transmission of antennas operating in SISO mode. Additional output power measurements were not necessary.
4. Per KDB 248227 D01v02r02, SAR test reduction is determined according to 802.11 transmission mode configurations and certain exposure conditions with multiple test positions. In the 2.4 GHz band, separate SAR procedures are applied to DSSS and OFDM configurations to simplify DSSS test requirements. For OFDM, in both 2.4 and 5 GHz bands, an initial test configuration must be determined for each standalone and aggregated frequency band, according to the transmission mode configuration with the highest maximum output power specified for production units to perform SAR measurements. If the same highest maximum output power applies to different combinations of channel bandwidths, modulations and data rates, additional procedures are applied to determine which test configurations require SAR measurement. When applicable, an initial test position may be applied to reduce the number of SAR measurements required for next to the ear, UMPC mini-tablet or hotspot mode configurations with multiple test positions.
5. For 2.4 GHz 802.11b DSSS, either the initial test position procedure for multiple exposure test positions or the DSSS procedure for fixed exposure position is applied; these are mutually exclusive. For 2.4 GHz and 5 GHz OFDM configurations, the initial test configuration is applied to measure SAR using either the initial test position procedure for multiple exposure test position configurations or the initial test configuration procedures for fixed exposure test conditions. Based on the reported SAR of the measured configurations and maximum output power of the transmission mode configurations that are not included in the initial test configuration, the subsequent test configuration and initial test position procedures are applied to determine if SAR measurements are required for the remaining OFDM transmission configurations. In general, the number of test channels that require SAR measurement is minimized based on maximum output power measured for the test sample(s).
6. For OFDM transmission configurations in the 2.4 GHz and 5 GHz bands, When the same maximum power is specified for multiple transmission modes in a frequency band, the largest channel bandwidth, lowest order modulation, lowest data rate and lowest order 802.11a/g/n/ac mode is used for SAR measurement, on the highest measured output power channel for each frequency band.
7. DSSS and OFDM configurations are considered separately according to the required SAR procedures. SAR is measured in the initial test position using the 802.11 transmission mode configuration required by the DSSS procedure or initial test configuration and subsequent test configuration(s) according to the OFDM procedures. 18 The initial test position procedure is described in the following:
  - a. When the reported SAR of the initial test position is  $\leq 0.4\text{ W/kg}$ , further SAR measurement is not required for the other test positions in that exposure configuration and 802.11 transmission mode combinations within the frequency band or aggregated band.
  - b. When the reported SAR of the test position is  $> 0.4\text{ W/kg}$ , SAR is repeated for the 802.11 transmission mode configuration tested in the initial test position to measure the subsequent next closet/smallest test separation distance and maximum coupling test position on the highest maximum output power channel, until the report SAR is  $\leq 0.8\text{ W/kg}$  or all required test position are tested.
  - c. For all positions/configurations, when the reported SAR is  $> 0.8\text{ W/kg}$ , SAR is measured for these test positions/configurations on the subsequent next highest measured output power channel(s) until the reported SAR is  $\leq 1.2\text{ W/kg}$  or all required channels are tested.
8. Per 201904 TCBC workshops, General principles of FCC KDB Publication 248227 D01 can be applied to determine the SAR Initial Test Configurations and test reduction for 802.11ax SAR testing. For the table below the 802.11ax maximum power is SU (non-OFDMA), and the SU maximum power also higher than RU (OFDMA)
9. In applying the test guidance, the IEEE 802.11 mode with the maximum output power (out of all modes) should be considered for testing
10. For modes with the same maximum output power, the guidance from section 5.3.2 a) of FCC KDB Publication 248227 D01 should be applied, with 802.11ax being considered as the highest 802.11 mode for the appropriate frequency bands
11. When SAR testing for 802.11ax is required
  - a. If the maximum output power is highest for OFDMA scenarios, choose the tone size with the maximum number of tones and the highest maximum output power
  - b. Otherwise, consider the fully allocated channel for SAR testing
  - c. When SAR testing is required on RU sizes less than the fully allocated channel, use the RU number closest to the middle of the channel, choosing the higher RU number when two RUs are equidistant to the middle of the channel





**Tablet Mode**

2.4GHz WLAN				Chain A			Chain B			Chain A+B				
Mode	Channel	Frequency (MHz)	Average power (dBm)	Tune-Up Limit	Duty Cycle %	Average power (dBm)	Tune-Up Limit	Duty Cycle %	Average power (dBm)	A+B(A)	A+B(B)	A+B	Duty Cycle %	
										Tune-Up Limit	Tune-Up Limit	Tune-Up Limit		
802.11b 1Mbps	1	2412	13.54	14.00	99.60	14.45	14.50	99.60						
	6	2437	13.37	14.00		14.42	14.50							
	11	2462	13.78	14.00		14.35	14.50							
	12	2467	13.39	14.00		14.39	14.50							
	13	2472	13.39	14.00		14.37	14.50							
802.11g 6Mbps	1	2412		14.00			14.50							
	6	2437		14.00			14.50							
	11	2462		14.00			14.50							
	12	2467		14.00			14.50							
	13	2472		12.25			12.00							
802.11n-HT20 MCS0	1	2412		14.00			14.50			13.50	13.50	16.50		
	6	2437		14.00			14.50			14.00	14.50	17.27		
	11	2462		14.00			14.50			13.00	13.00	16.00		
	12	2467		14.00			14.50			10.50	10.50	13.50		
	13	2472		12.25			12.00			8.00	8.00	11.00		
802.11n-HT40 MCS0	3	2422		13.50			13.50			10.75	10.75	13.75		
	6	2437		14.00			14.50			14.00	14.50	17.27		
	9	2452		14.00			14.50			12.50	12.50	15.50		
	10	2457		12.75			12.75			9.00	9.00	12.00		
	11	2462		10.50			10.00			7.50	7.50	10.50		
802.11ac-VHT20 MCS0	1	2412	Not required	14.00	Not required	Not required	14.50	Not required	Not required				Not required	
	6	2437		14.00			14.50				13.50	13.50		16.50
	11	2462		14.00			14.50				14.00	14.50		17.27
	12	2467		14.00			14.50				10.50	10.50		13.50
	13	2472		12.25			12.00				8.00	8.00		11.00
802.11ac-VHT40 MCS0	3	2422		13.50			13.50		Not required	10.75	10.75	13.75	Not required	
	6	2437		14.00			14.50			14.00	14.50	17.27		
	9	2452		14.00			14.50			12.50	12.50	15.50		
	10	2457		12.75			12.75			9.00	9.00	12.00		
	11	2462		10.50			10.00			7.50	7.50	10.50		
802.11ax-HE20 MCS0	1	2412		14.00			14.50			13.50	13.50	16.50		
	6	2437		14.00			14.50			14.00	14.50	17.27		
	11	2462		14.00			14.50			13.00	13.00	16.00		
	12	2467		14.00			14.50			10.50	10.50	13.50		
	13	2472		12.25			12.00			8.00	8.00	11.00		
802.11ax-HE40 MCS0	3	2422		13.50			13.50			10.75	10.75	13.75		
	6	2437		14.00			14.50			14.00	14.50	17.27		
	9	2452		14.00			14.50			12.50	12.50	15.50		
	10	2457		12.75			12.75			9.00	9.00	12.00		
	11	2462		10.50			10.00			7.50	7.50	10.50		



5.2GHz WLAN				Chain A			Chain B			Chain A+B				
5.2GHz WLAN	Mode	Channel	Frequency (MHz)	Average power (dBm)	Tune-Up Limit	Duty Cycle %	Average power (dBm)	Tune-Up Limit	Duty Cycle %	Average power (dBm)	A+B(A) Tune-Up Limit	A+B(B) Tune-Up Limit	A+B Tune-Up Limit	Duty Cycle %
	5.2GHz WLAN	802.11a 6Mbps	36	5180	Not required	8.50	Not required	Not required	10.00	Not required	Not required			
40			5200	8.50		10.00								
44			5220	8.50		10.00								
48			5240	8.50		10.00								
802.11n-HT20 MCS0		36	5180	8.50		10.00								
		40	5200	8.50		10.00								
		44	5220	8.50		10.00								
		48	5240	8.50		10.00								
802.11n-HT40 MCS0		38	5190	8.50		10.00								
		46	5230	8.50		10.00								
802.11ac-VHT20 MCS0		36	5180	8.50		10.00								
		40	5200	8.50		10.00								
		44	5220	8.50		10.00								
802.11ac-VHT40 MCS0		38	5190	8.50		10.00								
		46	5230	8.50		10.00								
802.11ac-VHT80 MCS0		42	5210	8.50		10.00								
		36	5180	8.50		10.00								
802.11ax-HE20 MCS0		40	5200	8.50		10.00								
		44	5220	8.50		10.00								
		48	5240	8.50		10.00								
	38	5190	8.50	10.00										
802.11ax-HE40 MCS0	46	5230	8.50	10.00										
	42	5210	8.50	10.00										
802.11ax-HE80 MCS0	42	5210	8.50	10.00										



5.3GHz WLAN				Chain A			Chain B			Chain A+B								
5.3GHz WLAN	Mode	Channel	Frequency (MHz)	Average power (dBm)	Tune-Up Limit	Duty Cycle %	Average power (dBm)	Tune-Up Limit	Duty Cycle %	Average power (dBm)	A+B(A) Tune-Up Limit	A+B(B) Tune-Up Limit	A+B Tune-Up Limit	Duty Cycle %				
	5.3GHz WLAN	802.11a 6Mbps	52	5260	Not required	8.50	Not required	Not required	10.00	Not required	Not required				Not required			
56			5280	8.50		10.00												
60			5300	8.50		10.00												
64			5320	8.50		10.00												
802.11n-HT20 MCS0		52	5260	8.50		10.00			8.50			10.00	12.32					
		56	5280	8.50		10.00			8.50			10.00	12.32					
		60	5300	8.50		10.00			8.50			10.00	12.32					
		64	5320	8.50		10.00			8.50			10.00	12.32					
802.11n-HT40 MCS0		54	5270	8.50		10.00			8.50			10.00	12.32					
		62	5310	8.50		10.00			8.50			10.00	12.32					
802.11ac-VHT20 MCS0		52	5260	8.50		10.00			8.50			10.00	12.32					
		56	5280	8.50		10.00			8.50			10.00	12.32					
		60	5300	8.50		10.00			8.50			10.00	12.32					
802.11ac-VHT40 MCS0		54	5270	8.50		10.00			8.50			10.00	12.32					
		62	5310	8.50		10.00			8.50			10.00	12.32					
802.11ac-VHT80 MCS0		58	5290	8.47		8.50			99.50			9.97	10.00	99.50		8.50	10.00	12.32
802.11ac-VHT160 MCS0		50	5250	8.49		8.50			99.10			9.99	10.00	99.10		8.50	10.00	12.32
802.11ax-HE20 MCS0		52	5260	8.50		10.00			8.50			10.00	12.32					
		56	5280	8.50		10.00			8.50			10.00	12.32					
		60	5300	8.50		10.00			8.50			10.00	12.32					
	64	5320	8.50	10.00	8.50	10.00	12.32											
802.11ax-HE40 MCS0	54	5270	8.50	10.00	8.50	10.00	12.32											
	62	5310	8.50	10.00	8.50	10.00	12.32											
802.11ax-HE80 MCS0	58	5290	8.50	10.00	8.50	10.00	12.32											
802.11ax-HE160 MCS0	50	5250	8.50	10.00	8.50	10.00	12.32											



5.5GHz WLAN				Chain A			Chain B			Chain A+B				
Mode	Channel	Frequency (MHz)	Average power (dBm)	Tune-Up Limit	Duty Cycle %	Average power (dBm)	Tune-Up Limit	Duty Cycle %	Average power (dBm)	A+B(A)	A+B(B)	A+B	Duty Cycle %	
										Tune-Up Limit	Tune-Up Limit	Tune-Up Limit		
802.11a 6Mbps	100	5500	Not required	9.50	Not required	Not required	11.00	Not required	Not required				Not required	
	116	5580		9.50			11.00							
	124	5620		9.50			11.00							
	132	5660		9.50			11.00							
	144	5720		9.50			11.00							
802.11n-HT20 MCS0	100	5500	Not required	9.50	Not required	Not required	11.00	Not required	Not required	9.50	11.00	13.32	Not required	
	116	5580		9.50			11.00			9.50	11.00	13.32		
	124	5620		9.50			11.00			9.50	11.00	13.32		
	132	5660		9.50			11.00			9.50	11.00	13.32		
	144	5720		9.50			11.00			9.50	11.00	13.32		
802.11n-HT40 MCS0	102	5510	Not required	9.50	Not required	Not required	11.00	Not required	Not required	9.50	11.00	13.32	Not required	
	110	5550		9.50			11.00			9.50	11.00	13.32		
	126	5630		9.50			11.00			9.50	11.00	13.32		
	134	5670		9.50			11.00			9.50	11.00	13.32		
802.11ac-VHT20 MCS0	100	5500	Not required	9.50	Not required	Not required	11.00	Not required	Not required	9.50	11.00	13.32	Not required	
	116	5580		9.50			11.00			9.50	11.00	13.32		
	124	5620		9.50			11.00			9.50	11.00	13.32		
	132	5660		9.50			11.00			9.50	11.00	13.32		
802.11ac-VHT40 MCS0	102	5510	Not required	9.50	Not required	Not required	11.00	Not required	Not required	9.50	11.00	13.32	Not required	
	110	5550		9.50			11.00			9.50	11.00	13.32		
	126	5630		9.50			11.00			9.50	11.00	13.32		
	134	5670		9.50			11.00			9.50	11.00	13.32		
802.11ac-VHT80 MCS0	106	5530	9.39	9.50	99.50	10.88	11.00	99.50	Not required	9.50	11.00	13.32	Not required	
	122	5610	9.47	9.50		10.91	11.00			9.50	11.00	13.32		
	138	5690	9.42	9.50		10.95	11.00			9.50	11.00	13.32		
	802.11ac-VHT160 MCS0	114	5570	9.48		9.50	99.10			10.99	11.00	99.10		9.50
802.11ax-HE20 MCS0	100	5500	Not required	9.50	Not required	Not required	11.00	Not required	Not required	9.50	11.00	13.32	Not required	
	116	5580		9.50			11.00			9.50	11.00	13.32		
	124	5620		9.50			11.00			9.50	11.00	13.32		
	132	5660		9.50			11.00			9.50	11.00	13.32		
	144	5720		9.50			11.00			9.50	11.00	13.32		
802.11ax-HE40 MCS0	102	5510	Not required	9.50	Not required	Not required	11.00	Not required	Not required	9.50	11.00	13.32	Not required	
	110	5550		9.50			11.00			9.50	11.00	13.32		
	126	5630		9.50			11.00			9.50	11.00	13.32		
	134	5670		9.50			11.00			9.50	11.00	13.32		
802.11ax-HE80 MCS0	106	5530	Not required	9.50	Not required	Not required	11.00	Not required	Not required	9.50	11.00	13.32	Not required	
	122	5610		9.50			11.00			9.50	11.00	13.32		
	138	5690		9.50			11.00			9.50	11.00	13.32		
802.11ax-HE160 MCS0	114	5570	Not required	9.50	Not required	Not required	11.00	Not required	Not required	9.50	11.00	13.32	Not required	



5.8GHz WLAN				Chain A			Chain B			Chain A+B						
Mode	Channel	Frequency (MHz)	Average power (dBm)	Tune-Up Limit	Duty Cycle %	Average power (dBm)	Tune-Up Limit	Duty Cycle %	Average power (dBm)	A+B(A)	A+B(B)	A+B	Duty Cycle %			
										Tune-Up Limit	Tune-Up Limit	Tune-Up Limit				
5.8GHz WLAN	802.11a 6Mbps	149	5745	Not required	10.00	Not required	Not required	11.00	Not required	Not required	Not required	Not required	Not required			
		157	5785		10.00									11.00		
		165	5825		10.00									11.00		
	802.11n-HT20 MCS0	149	5745	Not required	10.00	Not required	Not required	11.00	Not required	Not required	10.00	11.00	13.54	Not required		
		157	5785		10.00						11.00	13.54				
		165	5825		10.00						11.00	13.54				
	802.11n-HT40 MCS0	151	5755	9.95	10.00	99.50	10.88	11.00	99.50	Not required	10.00	11.00	13.54	Not required		
		159	5795	9.87	10.00		10.89				11.00	13.54				
	802.11ac-VHT20 MCS0	149	5745	Not required	10.00	Not required	Not required	11.00	Not required	Not required	Not required	Not required	Not required	Not required		
		157	5785		10.00										11.00	13.54
		165	5825		10.00										11.00	13.54
	802.11ac-VHT40 MCS0	151	5755	Not required	10.00	Not required	Not required	11.00	Not required	Not required	Not required	Not required	Not required	Not required		
		159	5795		10.00										11.00	13.54
	802.11ac-VHT80 MCS0	155	5775	9.96	10.00	99.50	10.98	11.00	99.50	Not required	10.00	11.00	13.54	Not required		
	802.11ax-HE20 MCS0	149	5745	Not required	10.00	Not required	Not required	11.00	Not required	Not required	Not required	Not required	Not required	Not required		
		157	5785		10.00										11.00	13.54
		165	5825		10.00										11.00	13.54
	802.11ax-HE40 MCS0	151	5755	Not required	10.00	Not required	Not required	11.00	Not required	Not required	Not required	Not required	Not required	Not required		
159		5795	10.00		11.00										13.54	
802.11ax-HE80 MCS0	155	5775	Not required	10.00	Not required	Not required	11.00	Not required	Not required	10.00	11.00	13.54	Not required			



Laptop Mode

2.4GHz WLAN				Chain A			Chain B			Average power (dBm)	Chain A+B			Duty Cycle %
Mode	Channel	Frequency (MHz)	Average power (dBm)	Tune-Up Limit	Duty Cycle %	Average power (dBm)	Tune-Up Limit	Duty Cycle %	A+B(A)		A+B(B)	A+B		
									Tune-Up Limit		Tune-Up Limit	Tune-Up Limit		
802.11b 1Mbps	1	2412	19.76	20.00	99.60	19.56	19.75	99.60						
	6	2437	20.74	21.00		20.90	21.00							
	11	2462	19.74	20.00		19.80	20.00							
	12	2467	17.93	18.00		17.86	18.00							
	13	2472	16.98	17.00		16.88	17.00							
802.11g 6Mbps	1	2412	17.17	17.25	97.90	17.39	17.50	97.90						
	6	2437	20.34	20.50		20.43	20.50							
	11	2462	15.85	16.00		15.36	15.50							
	12	2467	15.21	15.25		15.04	15.25							
	13	2472	12.13	12.25		11.97	12.00							
802.11n-HT20 MCS0	1	2412	17.11	17.25	98.80	17.42	17.50	98.80		13.50	13.50	16.50		
	6	2437	20.21	20.50		20.27	20.50			17.00	17.00	20.00		
	11	2462	15.89	16.00		15.43	15.50			13.00	13.00	16.00		
	12	2467	15.11	15.25		15.18	15.25			10.50	10.50	13.50		
	13	2472	12.11	12.25		11.89	12.00			8.00	8.00	11.00		
802.11n-HT40 MCS0	3	2422	13.44	13.50	98.80	13.42	13.50	98.80		10.75	10.75	13.75		
	6	2437	16.43	16.50		16.44	16.50			14.00	14.00	17.00		
	9	2452	14.97	15.00		15.84	16.00			12.50	12.50	15.50		
	10	2457	12.61	12.75		12.69	12.75			9.00	9.00	12.00		
	11	2462	10.47	10.50		9.91	10.00			7.50	7.50	10.50		
802.11ac-VHT20 MCS0	1	2412	17.02	17.25	98.80	17.38	17.50	98.80		13.50	13.50	16.50		
	6	2437	20.29	20.50		20.34	20.50			17.00	17.00	20.00		
	11	2462	15.91	16.00		15.32	15.50			13.00	13.00	16.00		
	12	2467	15.10	15.25		15.17	15.25			10.50	10.50	13.50		
	13	2472	12.08	12.25		11.85	12.00			8.00	8.00	11.00		
802.11ac-VHT40 MCS0	3	2422	17.11	17.25	98.80	17.35	17.50	98.80	Not required	10.75	10.75	13.75		
	6	2437	16.92	17.00		17.12	17.25			14.00	14.00	17.00		
	9	2452	15.87	16.00		15.35	15.50			12.50	12.50	15.50		
	10	2457	14.44	14.50		13.84	14.00			9.00	9.00	12.00		
	11	2462	10.87	11.00		10.66	10.75			7.50	7.50	10.50		
802.11ax-HE20 MCS0	1	2412	17.05	17.25	98.80	17.44	17.50	98.80		13.50	13.50	16.50		
	6	2437	20.35	20.50		20.38	20.50			17.00	17.00	20.00		
	11	2462	15.92	16.00		15.36	15.50			13.00	13.00	16.00		
	12	2467	15.17	15.25		15.20	15.25			10.50	10.50	13.50		
	13	2472	12.11	12.25		11.91	12.00			8.00	8.00	11.00		
802.11ax-HE40 MCS0	3	2422	13.41	13.50	98.80	13.38	13.50	98.80		10.75	10.75	13.75		
	6	2437	16.45	16.50		16.38	16.50			14.00	14.00	17.00		
	9	2452	14.89	15.00		15.95	16.00			12.50	12.50	15.50		
	10	2457	12.67	12.75		12.61	12.75			9.00	9.00	12.00		
	11	2462	10.41	10.50		9.92	10.00			7.50	7.50	10.50		



5GHz WLAN				Chain A			Chain B			Average power (dBm)	Chain A+B							
Mode	Channel	Frequency (MHz)	Average power (dBm)	Tune-Up Limit	Duty Cycle %	Average power (dBm)	Tune-Up Limit	Duty Cycle %	Tune-Up Limit		Tune-Up Limit	Tune-Up Limit	Duty Cycle %					
										802.11a 6Mbps				36	5180	18.87	19.00	98.20
40	5200	19.86	20.00	20.33	20.50													
44	5220	20.86	21.00	20.76	21.00													
48	5240	20.79	21.00	20.71	21.00													
802.11n-HT20 MCS0	36	5180	18.56	19.00	98.60	18.77	19.00	98.60	Not required	15.25	15.25	18.50	Not required					
	40	5200	19.64	20.00		20.26	20.50											
	44	5220	20.60	21.00		20.72	21.00											
	48	5240	20.65	21.00		20.60	21.00											
802.11n-HT40 MCS0	38	5190	18.29	18.50	99.10	18.12	18.50	99.10	Not required	15.25	15.25	18.25	Not required					
	46	5230	20.67	21.00		20.73	21.00											
802.11ac-VHT20 MCS0	36	5180	18.61	19.00	98.60	18.83	19.00	98.60						Not required	15.25	15.25	18.25	Not required
	40	5200	19.70	20.00		20.36	20.50											
	44	5220	20.64	21.00		20.82	21.00											
	48	5240	20.69	21.00		20.73	21.00											
802.11ac-VHT40 MCS0	38	5190	18.32	18.50	98.60	18.20	18.50	98.60	Not required	15.25	15.25	18.25	Not required					
	46	5230	20.74	21.00		20.83	21.00											
802.11ac-VHT80 MCS0	42	5210	17.76	18.00	98.60	17.55	17.75	98.60						Not required	15.50	15.50	18.50	Not required
802.11ax-HE20 MCS0	36	5180	18.70	19.00	98.60	18.89	19.00	98.60										
	40	5200	19.78	20.00		20.42	20.50											
	44	5220	20.70	21.00		20.86	21.00											
	48	5240	20.75	21.00		20.78	21.00											
802.11ax-HE40 MCS0	38	5190	18.41	18.50	98.60	18.28	18.50	98.60	Not required	15.25	15.25	18.25	Not required					
	46	5230	20.83	21.00		20.88	21.00											
802.11ax-HE80 MCS0	42	5210	17.81	18.00	99.10	17.62	17.75	99.10						Not required	15.50	15.50	18.50	Not required



5.3GHz WLAN	5GHz WLAN			Chain A			Chain B			Chain A+B							
	Mode	Channel	Frequency (MHz)	Average power (dBm)	Tune-Up Limit	Duty Cycle %	Average power (dBm)	Tune-Up Limit	Duty Cycle %	Average power (dBm)	A+B(A) Tune-Up Limit	A+B(B) Tune-Up Limit	A+B Tune-Up Limit	Duty Cycle %			
5.3GHz WLAN	802.11a 6Mbps	52	5260	20.80	21.00	98.20	20.71	21.00	98.20	Not required				Not required			
		56	5280	20.82	21.00		20.78	21.00									
		60	5300	20.32	20.50		20.28	20.50									
		64	5320	17.87	18.00		18.18	18.25									
	802.11n-HT20 MCS0	52	5260	20.67	21.00	98.60	20.70	21.00	98.60						17.00	17.00	20.00
		56	5280	20.58	21.00		20.77	21.00							18.00	18.00	21.00
		60	5300	20.21	20.50		20.26	20.50							17.50	17.50	20.50
		64	5320	17.59	18.00		18.01	18.25							15.50	15.50	18.50
	802.11n-HT40 MCS0	54	5270	20.76	21.00	99.10	20.68	21.00	99.10						18.00	18.00	21.00
		62	5310	16.63	17.00		16.76	17.00							13.50	13.50	16.50
	802.11ac-VHT20 MCS0	52	5260	20.70	21.00	98.60	20.76	21.00	98.60						17.00	17.00	20.00
		56	5280	20.63	21.00		20.82	21.00							18.00	18.00	21.00
		60	5300	20.28	20.50		20.33	20.50							17.50	17.50	20.50
		64	5320	17.66	18.00		18.07	18.25							15.50	15.50	18.50
	802.11ac-VHT40 MCS0	54	5270	20.20	21.00	98.60	20.73	21.00	98.60						18.00	18.00	21.00
		62	5310	16.78	17.00		16.81	17.00							13.50	13.50	16.50
	802.11ac-VHT80 MCS0	58	5290	15.61	15.75	98.60	15.52	15.75	98.60						13.00	13.00	16.00
	802.11ac-VHT160 MCS0	50	5250	13.09	13.25	98.60	13.50	13.75	99.10						11.75	11.75	14.75
	802.11ax-HE20 MCS0	52	5260	20.77	21.00	98.60	20.81	21.00	98.60						17.00	17.00	20.00
		56	5280	20.69	21.00		20.89	21.00							18.00	18.00	21.00
60		5300	20.33	20.50	20.38		20.50	17.50		17.50	20.50						
64		5320	17.71	18.00	18.15		18.25	15.50		15.50	18.50						
802.11ax-HE40 MCS0	54	5270	20.82	21.00	98.60	20.83	21.00	98.60	18.00	18.00	21.00						
	62	5310	16.82	17.00		16.85	17.00		13.50	13.50	16.50						
802.11ax-HE80 MCS0	58	5290	15.68	15.75	99.10	15.65	15.75	99.10	13.00	13.00	16.00						
802.11ax-HE160 MCS0	50	5250	13.14	13.25	99.10	13.61	13.75	99.10	11.75	11.75	14.75						





5GHz WLAN	5GHz WLAN			Chain A			Chain B			Chain A+B				
	Mode	Channel	Frequency (MHz)	Average power (dBm)	Tune-Up Limit	Duty Cycle %	Average power (dBm)	Tune-Up Limit	Duty Cycle %	Average power (dBm)	A+B(A) Tune-Up Limit	A+B(B) Tune-Up Limit	A+B Tune-Up Limit	Duty Cycle %
5.5GHz WLAN	802.11a 6Mbps	100	5500	19.33	19.50	98.20	19.40	19.50	98.20					
		116	5580	20.55	20.75		20.61	20.75						
		124	5620	20.80	21.00		20.78	21.00						
		132	5660	20.79	21.00		20.82	21.00						
		144	5720	20.84	21.00		20.79	21.00						
	802.11n-HT20 MCS0	100	5500	19.30	19.50	98.60	19.12	19.50	98.60		15.25	15.25	18.25	
		116	5580	20.58	20.75		20.55	20.75			18.25	18.25	21.25	
		124	5620	20.62	21.00		20.55	21.00			18.25	18.25	21.25	
		132	5660	20.64	21.00		20.62	21.00			18.25	18.25	21.25	
		144	5720	20.88	21.00		20.81	21.00			17.00	17.00	20.00	
	802.11n-HT40 MCS0	102	5510	18.27	18.50	99.10	18.18	18.50	99.10		15.75	15.75	18.75	
		110	5550	20.75	21.00		20.70	21.00			18.00	18.00	21.00	
		126	5630	20.71	21.00		20.63	21.00			18.00	18.00	21.00	
		134	5670	19.43	19.75		19.43	19.75			17.50	17.50	20.50	
		142	5710	20.64	21.00		20.64	21.00			19.00	19.00	21.00	
	802.11ac-VHT20 MCS0	100	5500	19.37	19.50	98.60	19.21	19.50	98.60		15.25	15.25	18.25	
		116	5580	20.64	20.75		20.63	20.75			18.25	18.25	21.25	
		124	5620	20.71	21.00		20.64	21.00			18.25	18.25	21.25	
		132	5660	20.68	21.00		20.68	21.00			18.25	18.25	21.25	
		144	5720	20.91	21.00		20.86	21.00			17.00	17.00	20.00	
802.11ac-VHT40 MCS0	102	5510	18.33	18.50	98.60	18.24	18.50	98.60		15.75	15.75	18.75		
	110	5550	20.81	21.00		20.79	21.00			18.00	18.00	21.00		
	126	5630	20.80	21.00		20.71	21.00			18.00	18.00	21.00		
	134	5670	19.49	19.75		19.48	19.75			17.50	17.50	20.50		
	142	5710	20.68	21.00		20.73	21.00			19.00	19.00	21.00		
802.11ac-VHT80 MCS0	106	5530	17.77	18.00	98.60	17.81	18.00	98.60	Not required	15.50	15.50	18.50	Not required	
	122	5610	20.12	20.25		20.04	20.25			17.75	17.75	20.75		
	138	5690	20.67	21.00		20.72	21.00			18.50	18.50	21.50		
802.11ac-VHT160 MCS0	114	5570	14.57	14.75	99.10	14.77	15.00	99.10		12.75	12.75	15.75		
802.11ax-HE20 MCS0	100	5500	18.32	18.50	98.60	19.27	19.50	98.60		15.25	15.25	18.25		
	116	5580	20.75	21.00		20.78	21.00			18.25	18.25	21.25		
	124	5620	20.76	21.00		20.70	21.00			18.25	18.25	21.25		
	132	5660	20.72	21.00		20.73	21.00			18.25	18.25	21.25		
	144	5720	20.10	21.00		20.05	21.00			17.00	17.00	20.00		
802.11ax-HE40 MCS0	102	5510	18.40	18.50	98.60	18.31	18.50	98.60		15.75	15.75	18.75		
	110	5550	20.88	21.00		20.85	21.00			18.00	18.00	21.00		
	126	5630	20.85	21.00		20.76	21.00			18.00	18.00	21.00		
	134	5670	19.58	19.75		19.56	19.75			17.50	17.50	20.50		
	142	5710	20.79	21.00		20.79	21.00			19.00	19.00	21.00		
802.11ax-HE80 MCS0	106	5530	17.84	18.00	99.10	17.87	18.00	99.10		15.50	15.50	18.50		
	122	5610	20.17	20.25		20.13	20.25			17.75	17.75	20.75		
	138	5690	20.78	21.00		20.78	21.00			18.50	18.50	21.50		
802.11ax-HE160 MCS0	114	5570	14.62	14.75	99.10	14.89	15.00	99.10		12.75	12.75	15.75		



5GHz WLAN				Chain A			Chain B			Chain A+B							
5.8GHz WLAN	Mode	Channel	Frequency (MHz)	Average power (dBm)	Tune-Up Limit	Duty Cycle %	Average power (dBm)	Tune-Up Limit	Duty Cycle %	Average power (dBm)	A+B(A) Tune-Up Limit	A+B(B) Tune-Up Limit	A+B Tune-Up Limit	Duty Cycle %			
	5.8GHz WLAN	802.11a 6Mbps	149	5745	20.34	20.50	98.20	20.31	20.50	98.20	Not required	Not required	Not required	Not required	Not required		
157			5785	20.73	21.00	20.74		21.00									
165			5825	20.39	20.50	18.98		20.50									
802.11n-HT20 MCS0		149	5745	20.30	20.50	98.60	20.18	20.50	98.60	17.50						17.50	20.50
		157	5785	20.53	21.00		20.70	21.00		17.50						17.50	20.50
		165	5825	20.18	20.50		20.25	20.50		17.50						17.50	20.50
802.11n-HT40 MCS0		151	5755	20.11	20.50	99.10	20.22	20.50	99.10	18.00						18.00	21.00
		159	5795	20.13	20.50		20.26	20.50		18.00						18.00	21.00
802.11ac-VHT20 MCS0		149	5745	20.33	20.50	98.60	20.24	20.50	98.60	17.50						17.50	20.50
		157	5785	20.67	21.00		20.78	21.00		17.50						17.50	20.50
		165	5825	20.24	20.50		20.27	20.50		17.50						17.50	20.50
802.11ac-VHT40 MCS0		151	5755	20.15	20.50	98.60	20.26	20.50	98.60	18.00						18.00	21.00
		159	5795	20.17	20.50		20.30	20.50		18.00						18.00	21.00
802.11ac-VHT80 MCS0		155	5775	18.63	19.00	98.60	18.74	19.00	98.60	16.00						16.00	19.00
802.11ax-HE20 MCS0		149	5745	20.41	20.50	98.60	20.29	20.50	98.60	17.50						17.50	20.50
		157	5785	20.84	21.00		20.84	21.00		17.50						17.50	20.50
		165	5825	20.39	20.50		20.31	20.50		17.50						17.50	20.50
802.11ax-HE40 MCS0		151	5755	20.29	20.50	98.60	20.31	20.50	98.60	18.00						18.00	21.00
	159	5795	20.22	20.50	20.38		20.50	18.00		18.00	21.00						
802.11ax-HE80 MCS0	155	5775	18.76	19.00	99.10	18.86	19.00	99.10	16.00	16.00	19.00						



<2.4GHz Bluetooth>

Mode	Channel	Frequency (MHz)	Average power (dBm)		
			1Mbps	2Mbps	3Mbps
BR / EDR	CH 00	2402	9.41	6.12	6.11
	CH 39	2441	9.92	6.57	6.53
	CH 78	2480	10.41	6.82	6.76
Tune-up Limit			10.50	7.00	7.00

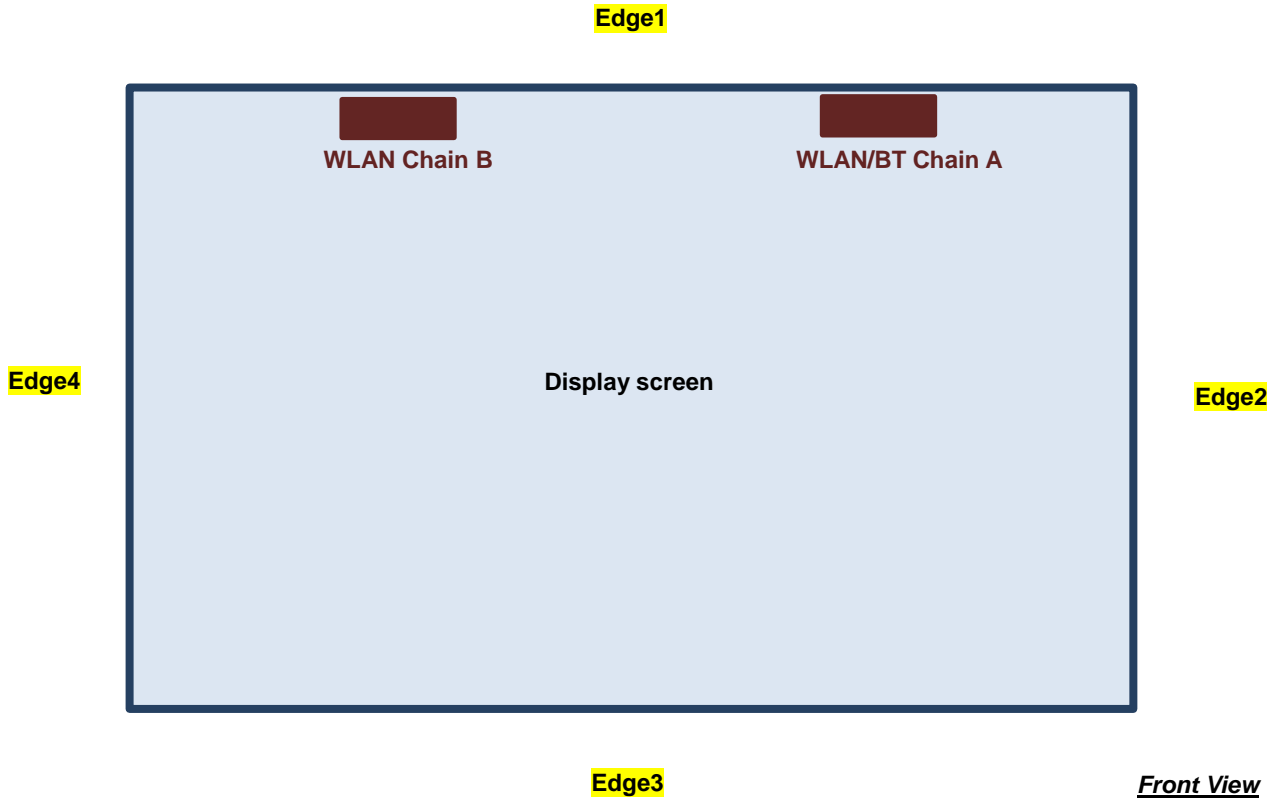
Mode	Channel	Frequency (MHz)	Average power (dBm)	
			1Mbps	2Mbps
LE	CH 00	2402	6.95	6.78
	CH 19	2440	6.81	6.89
	CH 39	2480	6.98	6.92
Tune-up Limit			7.00	7.00

**General Note:**

1. For 2.4GHz Bluetooth SAR testing was selected 1Mbps, due to its highest average power and the duty cycle 83.3% is consider in SAR testing.

## 12. Antenna Location

<Tablet Mode>

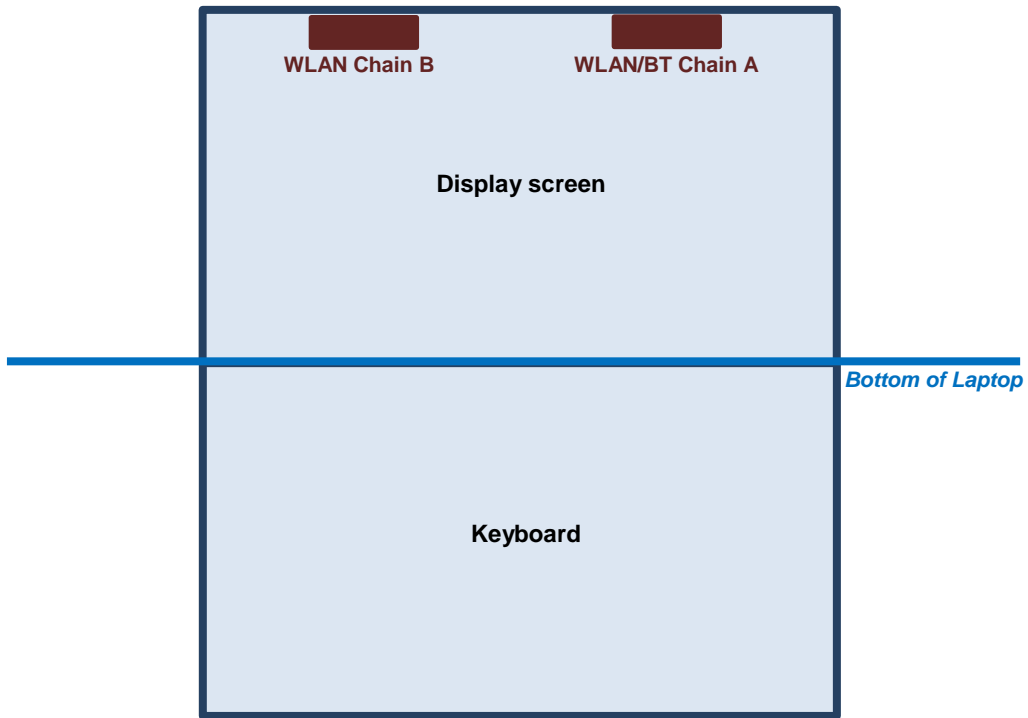


**Front View**

The separation distance for antenna to edge :

Antenna	To Edge1 (mm)	To Edge2 (mm)	To Edge3 (mm)	To Edge4 (mm)
WLAN/BT Chain A	<5	77.9	199.2	184.7
WLAN Chain B	<5	174.2	199.2	88.4

<Laptop Mode>



The separation distance for antenna to edge :

Antenna	To Bottom of Laptop (mm)
WLAN/BT Chain A	199.23
WLAN Chain B	199.23



**<SAR test exclusion table>**

**General Note:**

1. The below table, when the distance is < 50 mm exclusion threshold is "Ratio", when the distance is > 50 mm exclusion threshold is "mW"
2. Maximum power is the source-based time-average power and represents the maximum RF output power among production units
3. Per KDB 447498 D01v06, for larger devices, the test separation distance of adjacent edge configuration is determined by the closest separation between the antenna and the user.
4. Per KDB 447498 D01v06, standalone SAR test exclusion threshold is applied; If the test separation distance is < 5mm, 5mm is used to determine SAR exclusion threshold.
5. Per KDB 447498 D01v06, the 1-g and 10-g SAR test exclusion thresholds for 100 MHz to 6 GHz at *test separation distances* ≤ 50 mm are determined by:
  - $[(\text{max. power of channel, including tune-up tolerance, mW}) / (\text{min. test separation distance, mm})] \cdot \sqrt{f(\text{GHz})} \leq 3.0$  for 1-g SAR and ≤ 7.5 for 10-g extremity SAR
    - f(GHz) is the RF channel transmit frequency in GHz
    - Power and distance are rounded to the nearest mW and mm before calculation
    - The result is rounded to one decimal place for comparison
6. Per KDB 447498 D01v06, at 100 MHz to 6 GHz and for *test separation distances* > 50 mm, the SAR test exclusion threshold is determined according to the following
  - a) [Threshold at 50 mm in step 1) + (test separation distance - 50 mm) · ( f(MHz)/150)] mW, at 100 MHz to 1500 MHz
  - b) [Threshold at 50 mm in step 1) + (test separation distance - 50 mm) · 10] mW at > 1500 MHz and ≤ 6 GHz
7. The below table, exemption limits for routine evaluation based on frequency and separation distance was according to SAR-based Exemption – §1.1307(b)(3)(i)(B).

	Wireless Interface	BT Chain A	2.4GHz WLAN Chain A	2.4GHz WLAN Chain B	5GHz WLAN Chain A	5GHz WLAN Chain B
Exposure Position	Calculated Frequency (MHz)	2480	2472	2472	5825	5825
	Maximum power (dBm)	10.5	14.0	14.5	10.0	11.0
	Maximum rated power(mW)	11.22	25.12	28.18	10.00	12.59
	Separation distance(mm)	5.0	5.0	5.0	5.0	5.0
Bottom Face	exclusion threshold	7.9	7.9	8.9	4.8	6.1
	Testing required?	Yes	Yes	Yes	Yes	Yes
	Separation distance(mm)	5.0	5.0	5.0	5.0	5.0
Edge 1	exclusion threshold	7.9	7.9	8.9	4.8	6.1
	Testing required?	Yes	Yes	Yes	Yes	Yes
	Separation distance(mm)	77.9	77.9	174.2	77.9	174.2
Edge 2	exclusion threshold	374.0	374.0	1337.0	341.0	1304.0
	Testing required?	No	No	No	No	No
	Separation distance(mm)	199.2	199.2	199.2	199.2	199.2
Edge 3	exclusion threshold	1588.0	1588.0	1588.0	1554.0	1554.0
	Testing required?	No	No	No	No	No
	Separation distance(mm)	184.7	184.7	88.4	184.7	88.4
Edge 4	exclusion threshold	1442.0	1442.0	479.0	1409.0	446.0
	Testing required?	No	No	No	No	No



## 13. SAR Test Results

### General Note:

1. Per KDB 447498 D01v06, the reported SAR is the measured SAR value adjusted for maximum tune-up tolerance.
  - a. Tune-up scaling Factor = tune-up limit power (mW) / EUT RF power (mW), where tune-up limit is the maximum rated power among all production units.
  - b. For SAR testing of WLAN signal with non-100% duty cycle, the measured SAR is scaled-up by the duty cycle scaling factor which is equal to "1/(duty cycle)"
  - c. For WWAN: Reported SAR(W/kg)= Measured SAR(W/kg)\*Tune-up Scaling Factor
  - d. For WLAN/Bluetooth: Reported SAR(W/kg)= Measured SAR(W/kg)\* Duty Cycle scaling factor \* Tune-up scaling factor
2. Per KDB 447498 D01v06, for each exposure position, testing of other required channels within the operating mode of a frequency band is not required when the *reported* 1-g or 10-g SAR for the mid-band or highest output power channel is:
  - $\leq 0.8$  W/kg or 2.0 W/kg, for 1-g or 10-g respectively, when the transmission band is  $\leq 100$  MHz
  - $\leq 0.6$  W/kg or 1.5 W/kg, for 1-g or 10-g respectively, when the transmission band is between 100 MHz and 200 MHz
  - $\leq 0.4$  W/kg or 1.0 W/kg, for 1-g or 10-g respectively, when the transmission band is  $\geq 200$  MHz
3. Per KDB 865664 D01v01r04, for each frequency band, repeated SAR measurement is required only when the measured SAR is  $\geq 0.8$ W/kg
4. Considering the curvature transition from bottom face to the edge, SAR testing at the curvature was performed for edge1. The SAR test setup is included in test setup photo exhibit.

### WLAN Note:

1. Per KDB 248227 D01v02r02, for 2.4GHz 802.11g/n SAR testing is not required when the highest reported SAR for DSSS is adjusted by the ratio of OFDM to DSSS specified maximum output power and the adjusted SAR is  $\leq 1.2$  W/kg.
2. Per KDB 248227 D01v02r02, WLAN5.2GHz SAR testing is not required when the WLAN5.3GHz band highest reported SAR for a test configuration is  $\leq 1.2$  W/kg, SAR is not required for WLAN5.2GHz band.
3. When the reported SAR of the test position is  $> 0.4$  W/kg, SAR is repeated for the 802.11 transmission mode configuration tested in the initial test position to measure the subsequent next closet/smallest test separation distance and maximum coupling test position on the highest maximum output power channel, until the report SAR is  $\leq 0.8$  W/kg or all required test position are tested.
4. For all positions / configurations, when the reported SAR is  $> 0.8$  W/kg, SAR is measured for these test positions / configurations on the subsequent next highest measured output power channel(s) until the reported SAR is  $\leq 1.2$  W/kg or all required channels are tested.
5. For WLAN SAR testing was performed on single antenna RF power in SISO mode is larger or equal to the single antenna RF power in MIMO mode, and for RF exposure assessment of MIMO mode simultaneous transmission exclusion analysis was performed with SAR test results of each antenna in SISO mode.
6. Per KDB 248227 D01v02r02, the simultaneous SAR provisions in KDB publication 447498 should be applied to determine simultaneous transmission SAR test exclusion for WiFi MIMO. If the sum of 1g single transmission chain SAR measurements is  $< 1.6$ W/kg and SAR peak to location ratio  $\leq 0.04$ , no additional SAR measurements for MIMO.
7. During SAR testing the WLAN transmission was verified using a spectrum analyzer.



13.1 Body SAR

<WLAN SAR>

Plot No.	Band	Mode	Test Position	Gap (mm)	Antenna Vendor	Antenna	Ch.	Freq. (MHz)	Average Power (dBm)	Tune-Up Limit (dBm)	Tune-up Scaling Factor	Duty Cycle %	Duty Cycle Scaling Factor	Power Drift (dB)	Measured 1g SAR (W/kg)	Reported 1g SAR (W/kg)
	WLAN2.4GHz	802.11b 1Mbps	Bottom of Laptop	0mm	ACON	Chain A	6	2437	20.74	21.00	1.062	99.60	1.004	0	< 0.001	< 0.001
	WLAN2.4GHz	802.11b 1Mbps	Bottom Face	0mm	ACON	Chain A	11	2462	13.78	14.00	1.052	99.60	1.004	0.11	0.376	0.397
	WLAN2.4GHz	802.11b 1Mbps	Edge1	0mm	ACON	Chain A	11	2462	13.78	14.00	1.052	99.60	1.004	-0.1	0.565	0.597
	WLAN2.4GHz	802.11b 1Mbps	Curved surface of Edge1	0mm	ACON	Chain A	11	2462	13.78	14.00	1.052	99.60	1.004	-0.17	0.580	0.613
	WLAN2.4GHz	802.11b 1Mbps	Curved surface of Edge1	0mm	ACON	Chain A	1	2412	13.54	14.00	1.112	99.60	1.004	0.08	0.549	0.613
	WLAN2.4GHz	802.11b 1Mbps	Curved surface of Edge1	0mm	ACON	Chain A	6	2437	13.37	14.00	1.156	99.60	1.004	-0.12	0.505	0.586
	WLAN2.4GHz	802.11b 1Mbps	Curved surface of Edge1	0mm	ACON	Chain A	12	2467	13.39	14.00	1.151	99.60	1.004	-0.1	0.528	0.610
	WLAN2.4GHz	802.11b 1Mbps	Curved surface of Edge1	0mm	ACON	Chain A	13	2472	13.39	14.00	1.151	99.60	1.004	0.04	0.531	0.614
	WLAN2.4GHz	802.11b 1Mbps	Curved surface of Edge1	0mm	HB	Chain A	11	2462	13.78	14.00	1.052	99.60	1.004	-0.04	0.411	0.434
	WLAN2.4GHz	802.11b 1Mbps	Bottom of Laptop	0mm	ACON	Chain B	6	2437	20.90	21.00	1.023	99.60	1.004	0	< 0.001	< 0.001
	WLAN2.4GHz	802.11b 1Mbps	Bottom Face	0mm	ACON	Chain B	1	2412	14.45	14.50	1.012	99.60	1.004	0.06	0.438	0.445
	WLAN2.4GHz	802.11b 1Mbps	Edge 1	0mm	ACON	Chain B	1	2412	14.45	14.50	1.012	99.60	1.004	-0.1	0.781	0.793
	WLAN2.4GHz	802.11b 1Mbps	Curved surface of Edge1	0mm	ACON	Chain B	1	2412	14.45	14.50	1.012	99.60	1.004	-0.15	0.868	0.882
	WLAN2.4GHz	802.11b 1Mbps	Curved surface of Edge1	0mm	ACON	Chain B	6	2437	14.42	14.50	1.019	99.60	1.004	-0.03	0.845	0.864
	WLAN2.4GHz	802.11b 1Mbps	Curved surface of Edge1	0mm	ACON	Chain B	11	2462	14.35	14.50	1.035	99.60	1.004	-0.18	0.875	0.909
01	WLAN2.4GHz	802.11b 1Mbps	Curved surface of Edge1	0mm	ACON	Chain B	12	2467	14.39	14.50	1.026	99.60	1.004	0.19	0.905	0.932
	WLAN2.4GHz	802.11b 1Mbps	Curved surface of Edge1	0mm	ACON	Chain B	13	2472	14.37	14.50	1.030	99.60	1.004	0.15	0.898	0.929
	WLAN2.4GHz	802.11b 1Mbps	Curved surface of Edge1	0mm	HB	Chain B	1	2412	14.45	14.50	1.012	99.60	1.004	-0.19	0.810	0.823
	WLAN2.4GHz	802.11b 1Mbps	Curved surface of Edge1	0mm	HB	Chain B	6	2437	14.42	14.50	1.019	99.60	1.004	-0.04	0.815	0.833
	WLAN2.4GHz	802.11b 1Mbps	Curved surface of Edge1	0mm	HB	Chain B	11	2462	14.35	14.50	1.035	99.60	1.004	-0.16	0.869	0.903
	WLAN2.4GHz	802.11b 1Mbps	Curved surface of Edge1	0mm	HB	Chain B	12	2467	14.39	14.50	1.026	99.60	1.004	0.11	0.873	0.899
	WLAN2.4GHz	802.11b 1Mbps	Curved surface of Edge1	0mm	HB	Chain B	13	2472	14.37	14.50	1.030	99.60	1.004	-0.06	0.891	0.922





Plot No.	Band	Mode	Test Position	Gap (mm)	Antenna Vendor	Antenna	Ch.	Freq. (MHz)	Average Power (dBm)	Tune-Up Limit (dBm)	Tune-up Scaling Factor	Duty Cycle %	Duty Cycle Scaling Factor	Power Drift (dB)	Measured 1g SAR (W/kg)	Reported 1g SAR (W/kg)
	WLAN5GHz	802.11n-HT40 MCS0	Bottom of Laptop	0mm	ACON	Chain A	54	5270	20.76	21.00	1.057	99.10	1.009	0	< 0.001	< 0.001
	WLAN5GHz	802.11ac-VHT160 MCS0	Bottom Face	0mm	ACON	Chain A	50	5250	8.49	8.50	1.002	99.10	1.009	0.09	0.210	0.212
	WLAN5GHz	802.11ac-VHT160 MCS0	Edge 1	0mm	ACON	Chain A	50	5250	8.49	8.50	1.002	99.10	1.009	-0.04	0.449	0.454
	WLAN5GHz	802.11ac-VHT160 MCS0	Curved surface of Edge1	0mm	ACON	Chain A	50	5250	8.49	8.50	1.002	99.10	1.009	0.11	0.794	0.803
	WLAN5GHz	802.11ac-VHT80 MCS0	Curved surface of Edge1	0mm	ACON	Chain A	58	5290	8.47	8.50	1.007	99.50	1.005	-0.15	0.666	0.674
	WLAN5GHz	802.11ac-VHT160 MCS0	Curved surface of Edge1	0mm	HB	Chain A	50	5250	8.49	8.50	1.002	99.10	1.009	0.12	0.817	0.826
	WLAN5GHz	802.11ac-VHT80 MCS0	Curved surface of Edge1	0mm	HB	Chain A	58	5290	8.47	8.50	1.007	99.50	1.005	0.17	0.868	0.878
	WLAN5GHz	802.11n-HT40 MCS0	Bottom of Laptop	0mm	ACON	Chain B	54	5270	20.68	21.00	1.076	99.10	1.009	0	< 0.001	< 0.001
	WLAN5GHz	802.11ac-VHT160 MCS0	Bottom Face	0mm	ACON	Chain B	50	5250	9.99	10.00	1.002	99.10	1.009	-0.18	0.065	0.066
	WLAN5GHz	802.11ac-VHT160 MCS0	Edge 1	0mm	ACON	Chain B	50	5250	9.99	10.00	1.002	99.10	1.009	0.17	0.919	0.929
	WLAN5GHz	802.11ac-VHT80 MCS0	Edge 1	0mm	ACON	Chain B	58	5290	9.97	10.00	1.007	99.50	1.005	-0.14	0.639	0.647
02	WLAN5GHz	802.11ac-VHT160 MCS0	Curved surface of Edge1	0mm	ACON	Chain B	50	5250	9.99	10.00	1.002	99.10	1.009	0.09	0.961	0.972
	WLAN5GHz	802.11ac-VHT80 MCS0	Curved surface of Edge1	0mm	ACON	Chain B	58	5290	9.97	10.00	1.007	99.50	1.005	0.06	0.724	0.733
	WLAN5GHz	802.11ac-VHT160 MCS0	Curved surface of Edge1	0mm	HB	Chain B	50	5250	9.99	10.00	1.002	99.10	1.009	0.07	0.908	0.918
	WLAN5GHz	802.11ac-VHT80 MCS0	Curved surface of Edge1	0mm	HB	Chain B	58	5290	9.97	10.00	1.007	99.50	1.005	0.18	0.722	0.731
	WLAN5GHz	802.11ac-VHT80 MCS0	Bottom of Laptop	0mm	ACON	Chain A	138	5690	20.67	21.00	1.079	98.60	1.014	0	< 0.001	< 0.001
	WLAN5GHz	802.11ac-VHT160 MCS0	Bottom Face	0mm	ACON	Chain A	114	5570	9.48	9.50	1.005	99.10	1.009	0.06	0.376	0.381
	WLAN5GHz	802.11ac-VHT160 MCS0	Edge 1	0mm	ACON	Chain A	114	5570	9.48	9.50	1.005	99.10	1.009	0.06	0.859	0.871
	WLAN5GHz	802.11ac-VHT80 MCS0	Edge 1	0mm	ACON	Chain A	122	5610	9.47	9.50	1.007	99.50	1.005	0.1	0.997	1.009
	WLAN5GHz	802.11ac-VHT160 MCS0	Curved surface of Edge1	0mm	ACON	Chain A	114	5570	9.48	9.50	1.005	99.10	1.009	-0.18	1.060	1.074
03	WLAN5GHz	802.11ac-VHT80 MCS0	Curved surface of Edge1	0mm	ACON	Chain A	122	5610	9.47	9.50	1.007	99.50	1.005	0.07	1.150	1.164
	WLAN5GHz	802.11ac-VHT160 MCS0	Curved surface of Edge1	0mm	HB	Chain A	114	5570	9.48	9.50	1.005	99.10	1.009	0.04	1.120	1.135
	WLAN5GHz	802.11ac-VHT80 MCS0	Curved surface of Edge1	0mm	HB	Chain A	122	5610	9.47	9.50	1.007	99.50	1.005	-0.19	1.080	1.093
	WLAN5GHz	802.11ac-VHT80 MCS0	Bottom of Laptop	0mm	ACON	Chain B	138	5690	20.72	21.00	1.067	98.60	1.014	0	< 0.001	< 0.001
	WLAN5GHz	802.11ac-VHT160 MCS0	Bottom Face	0mm	ACON	Chain B	114	5570	10.99	11.00	1.002	99.10	1.009	-0.07	0.217	0.219
	WLAN5GHz	802.11ac-VHT160 MCS0	Edge 1	0mm	ACON	Chain B	114	5570	10.99	11.00	1.002	99.10	1.009	0.02	1.090	1.102
	WLAN5GHz	802.11ac-VHT80 MCS0	Edge 1	0mm	ACON	Chain B	138	5690	10.95	11.00	1.012	99.50	1.005	0.08	0.901	0.916
	WLAN5GHz	802.11ac-VHT160 MCS0	Curved surface of Edge1	0mm	ACON	Chain B	114	5570	10.99	11.00	1.002	99.10	1.009	0.05	1.060	1.072
	WLAN5GHz	802.11ac-VHT80 MCS0	Curved surface of Edge1	0mm	ACON	Chain B	138	5690	10.95	11.00	1.012	99.50	1.005	0.14	0.974	0.990
	WLAN5GHz	802.11ac-VHT160 MCS0	Curved surface of Edge1	0mm	HB	Chain B	114	5570	10.99	11.00	1.002	99.10	1.009	0.15	1.010	1.021
	WLAN5GHz	802.11ac-VHT80 MCS0	Curved surface of Edge1	0mm	HB	Chain B	138	5690	10.95	11.00	1.012	99.50	1.005	-0.02	0.952	0.968
	WLAN5GHz	802.11a 6Mbps	Bottom of Laptop	0mm	ACON	Chain A	157	5785	20.73	21.00	1.064	98.20	1.018	0	< 0.001	< 0.001
	WLAN5GHz	802.11ac-VHT80 MCS0	Bottom Face	0mm	ACON	Chain A	155	5775	9.96	10.00	1.009	99.50	1.005	-0.01	0.336	0.341
	WLAN5GHz	802.11ac-VHT80 MCS0	Edge 1	0mm	ACON	Chain A	155	5775	9.96	10.00	1.009	99.50	1.005	0.1	0.681	0.691
	WLAN5GHz	802.11ac-VHT80 MCS0	Curved surface of Edge1	0mm	ACON	Chain A	155	5775	9.96	10.00	1.009	99.50	1.005	0.13	1.070	1.085
	WLAN5GHz	802.11n-HT40 MCS0	Curved surface of Edge1	0mm	ACON	Chain A	151	5755	9.95	10.00	1.012	99.50	1.005	0.19	1.010	1.027
	WLAN5GHz	802.11ac-VHT80 MCS0	Curved surface of Edge1	0mm	HB	Chain A	155	5775	9.96	10.00	1.009	99.50	1.005	0.04	0.854	0.866
	WLAN5GHz	802.11n-HT40 MCS0	Curved surface of Edge1	0mm	HB	Chain A	151	5755	9.95	10.00	1.012	99.50	1.005	-0.17	0.792	0.805
	WLAN5GHz	802.11a 6Mbps	Bottom of Laptop	0mm	ACON	Chain B	157	5785	20.74	21.00	1.062	98.20	1.018	0	< 0.001	< 0.001
	WLAN5GHz	802.11ac-VHT80 MCS0	Bottom Face	0mm	ACON	Chain B	155	5775	10.98	11.00	1.005	99.50	1.005	0.08	0.307	0.310
	WLAN5GHz	802.11ac-VHT80 MCS0	Edge 1	0mm	ACON	Chain B	155	5775	10.98	11.00	1.005	99.50	1.005	0.1	1.070	1.080
	WLAN5GHz	802.11n-HT40 MCS0	Edge 1	0mm	ACON	Chain B	159	5795	10.89	11.00	1.026	99.50	1.005	-0.14	0.648	0.668
	WLAN5GHz	802.11ac-VHT80 MCS0	Curved surface of Edge1	0mm	ACON	Chain B	155	5775	10.98	11.00	1.005	99.50	1.005	0.11	0.842	0.850
	WLAN5GHz	802.11n-HT40 MCS0	Curved surface of Edge1	0mm	ACON	Chain B	159	5795	10.89	11.00	1.026	99.50	1.005	0.09	0.715	0.737
	WLAN5GHz	802.11ac-VHT80 MCS0	Curved surface of Edge1	0mm	HB	Chain B	155	5775	10.98	11.00	1.005	99.50	1.005	0	0.917	0.926
04	WLAN5GHz	802.11n-HT40 MCS0	Curved surface of Edge1	0mm	HB	Chain B	159	5795	10.89	11.00	1.026	99.50	1.005	0.05	1.060	1.093

**<Bluetooth SAR>**

Plot No.	Band	Mode	Test Position	Gap (mm)	Antenna Vendor	Antenna	Ch.	Freq. (MHz)	Average Power (dBm)	Tune-Up Limit (dBm)	Tune-up Scaling Factor	Power Drift (dB)	Measured 1g SAR (W/kg)	Reported 1g SAR (W/kg)
	Bluetooth	1Mbps	Bottom of Laptop	0mm	ACON	Chain A	78	2480	10.41	11.00	1.146	0	< 0.001	< 0.001
	Bluetooth	1Mbps	Bottom Face	0mm	ACON	Chain A	78	2480	10.41	11.00	1.146	0.05	0.055	0.063
	Bluetooth	1Mbps	Edge1	0mm	ACON	Chain A	78	2480	10.41	11.00	1.146	-0.01	0.059	0.068
	Bluetooth	1Mbps	Curved surface of Edge1	0mm	ACON	Chain A	78	2480	10.41	11.00	1.146	-0.03	0.078	0.089
05	Bluetooth	1Mbps	Curved surface of Edge1	0mm	ACON	Chain A	0	2402	9.41	11.00	1.442	-0.08	0.127	0.183
	Bluetooth	1Mbps	Curved surface of Edge1	0mm	ACON	Chain A	39	2441	9.92	11.00	1.282	0.12	0.112	0.144
	Bluetooth	1Mbps	Curved surface of Edge1	0mm	HB	Chain A	0	2402	9.41	11.00	1.442	-0.05	0.107	0.154

**13.2 Repeated SAR Measurement**

Plot No.	Band	Mode	Test Position	Gap (mm)	Antenna Vendor	Antenna	Ch.	Freq. (MHz)	Average Power (dBm)	Tune-Up Limit (dBm)	Tune-up Scaling Factor	Duty Cycle %	Duty Cycle Scaling Factor	Power Drift (dB)	Measured 1g SAR (W/kg)	Ratio	Reported 1g SAR (W/kg)
1st	WLAN2.4GHz	802.11b 1Mbps	Curved surface of Edge1	0mm	ACON	Chain B	12	2467	14.39	14.50	1.026	99.60	1.004	0.19	0.905	-	0.932
2nd	WLAN2.4GHz	802.11b 1Mbps	Curved surface of Edge1	0mm	ACON	Chain B	12	2467	14.39	14.50	1.026	99.60	1.004	0.04	0.902	1.00	0.929
1st	WLAN5GHz	802.11ac-VHT160 MCS0	Curved surface of Edge1	0mm	ACON	Chain B	50	5250	9.99	10.00	1.002	99.10	1.009	0.09	0.961	-	0.972
2nd	WLAN5GHz	802.11ac-VHT160 MCS0	Curved surface of Edge1	0mm	ACON	Chain B	50	5250	9.99	10.00	1.002	99.10	1.009	-0.12	0.958	1.00	0.969
1st	WLAN5GHz	802.11ac-VHT80 MCS0	Curved surface of Edge1	0mm	ACON	Chain A	122	5610	9.47	9.50	1.007	99.50	1.005	0.07	1.150	-	1.164
2nd	WLAN5GHz	802.11ac-VHT80 MCS0	Curved surface of Edge1	0mm	ACON	Chain A	122	5610	9.47	9.50	1.007	99.50	1.005	0.06	1.110	1.04	1.123
1st	WLAN5GHz	802.11ac-VHT80 MCS0	Curved surface of Edge1	0mm	ACON	Chain A	155	5775	9.96	10.00	1.009	99.50	1.005	0.13	1.070	-	1.085
2nd	WLAN5GHz	802.11ac-VHT80 MCS0	Curved surface of Edge1	0mm	ACON	Chain A	155	5775	9.96	10.00	1.009	99.50	1.005	-0.14	1.020	1.05	1.035

**General Note:**

1. Per KDB 865664 D01v01r04, for each frequency band, repeated SAR measurement is required only when the measured SAR is  $\geq 0.8$ W/kg.
2. Per KDB 865664 D01v01r04, if the ratio among the repeated measurement is  $\leq 1.2$  and the measured SAR  $< 1.45$ W/kg, only one repeated measurement is required.
3. The ratio is the difference in percentage between original and repeated *measured SAR*.
4. All measurement SAR result is scaled-up to account for tune-up tolerance and is compliant.



### 14. Simultaneous Transmission Analysis

NO.	Simultaneous Transmission Configurations	Body
1.	2.4GHz WLAN Chain B + Bluetooth Chain A	Yes
2.	2.4GHz WLAN Chain A + 2.4GHz WLAN Chain B	Yes
3.	5GHz WLAN Chain B + Bluetooth Chain A	Yes
4.	5GHz WLAN Chain A + 5GHz WLAN Chain B	Yes
5.	5GHz WLAN Chain A + 5GHz WLAN Chain B+ Bluetooth Chain A	Yes

**General Note:**

1. The worst case WLAN reported SAR for each configuration was used for SAR summation. Therefore, the following summations represent the absolute worst cases for simultaneous transmission with WLAN.
2. WLAN RF exposure assessment of MIMO mode simultaneous transmission exclusion analysis was performed with SAR test results of each antenna in SISO mode. Therefore SPLSR calculation was choose worst case with SAR test results of each antenna in SISO mode perform evaluation.
3. The Scaled SAR summation is calculated based on the same configuration and test position.
4. Per KDB 447498 D01v06, simultaneous transmission SAR is compliant if,
  - i) Scalar SAR summation < 1.6W/kg.
  - ii)  $SPLSR = (SAR1 + SAR2)^{1.5} / (\text{min. separation distance, mm})$ , and the peak separation distance is determined from the square root of  $[(x1-x2)^2 + (y1-y2)^2 + (z1-z2)^2]$ , where (x1, y1, z1) and (x2, y2, z2) are the coordinates of the extrapolated peak SAR locations in the zoom scan.
  - iii) If  $SPLSR \leq 0.04$ , simultaneously transmission SAR measurement is not necessary.
  - iv) Simultaneously transmission SAR measurement, and the reported multi-band SAR < 1.6W/kg.
  - v) The SPLSR calculated results please refer to section 14.2.

#### 14.1 Body Exposure Conditions

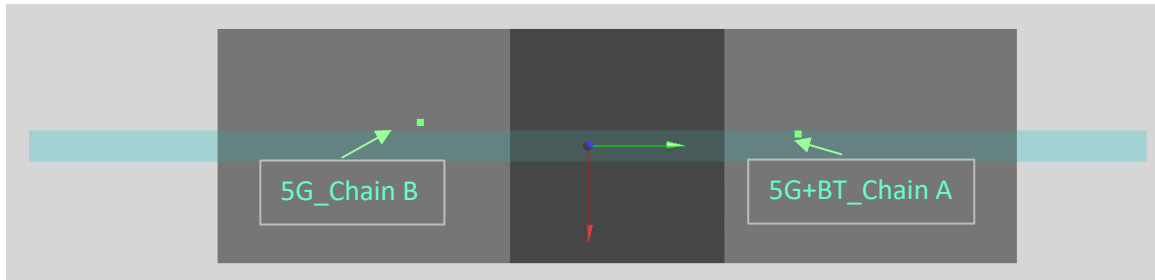
Exposure Position	1	2	3	4	5	2+5 Summed 1g SAR (W/kg)	1+2 Summed 1g SAR (W/kg)	4+5 Summed 1g SAR (W/kg)	3+4 Summed 1g SAR (W/kg)	3+4+5 Summed 1g SAR (W/kg)	SPLSR	Case No
	2.4GHz WLAN Chain A	2.4GHz WLAN Chain B	5GHz WLAN Chain A	5GHz WLAN Chain B	Bluetooth Chain A							
	1g SAR (W/kg)	1g SAR (W/kg)	1g SAR (W/kg)	1g SAR (W/kg)	1g SAR (W/kg)							
Bottom of Laptop at 0mm	0.001	0.001	0.001	0.001	0.001	0.002	0.002	0.002	0.002	0.003		
Bottom Face at 0mm	0.397	0.445	0.381	0.310	0.063	0.508	0.842	0.373	0.691	0.754		
Edge1 at 0mm	0.597	0.793	1.009	1.102	0.068	0.861	1.390	1.170	2.111	2.179	0.03	Case 1
Curved surface of Edge1 at 0mm	0.614	0.932	1.164	1.093	0.183	1.115	1.546	1.276	2.257	2.440	0.04	Case 2

**14.2 SPLSR Evaluation and Analysis**

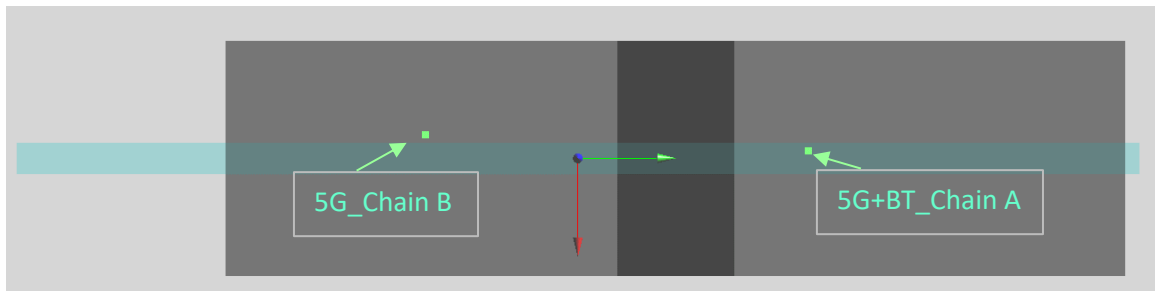
**General Note:**

1.  $SPLSR = (SAR_1 + SAR_2)^{1.5} / (min. \text{ separation distance, mm})$ . If  $SPLSR \leq 0.04$ , simultaneously transmission SAR measurement is not necessary
2. The detail hotspot point for each transmitter in each exposure condition are showing as below figure and the minimum 3D distance for each sum combination is used for SPLSR analysis.

Case 1	Band	Position	SAR (W/kg)	Gap (mm)	SAR peak location (mm)			3D distance (mm)	Summed SAR (W/kg)	SPLSR Results	Simultaneous SAR
	5G_Chain A + BT_Chain A				X	Y	Z				
	5G_Chain A + BT_Chain A	Edge 1	1.077	0	-3	58	1.84	97.8	2.179	0.03	Not required
	5G_Chain B		1.102	0	-5.2	-39.8	1.95				



Case 2	Band	Position	SAR (W/kg)	Gap (mm)	SAR peak location (mm)			3D distance (mm)	Summed SAR (W/kg)	SPLSR Results	Simultaneous SAR
	5G_Chain A + BT_Chain A				X	Y	Z				
	5G_Chain A + BT_Chain A	Curved Edge 1	1.347	0	-2.8	65	0.47	106.4	2.44	0.04	Not required
	5G_Chain B		1.093	0	-5.2	-41.4	0.62				



**Test Engineer :** Willie Huang and Mood Huang



## **15. Uncertainty Assessment**

Per KDB 865664 D01 SAR measurement 100MHz to 6GHz, when the highest measured 1-g SAR within a frequency band is  $< 1.5$  W/kg and the measured 10-g SAR within a frequency band is  $< 3.75$  W/kg. The expanded SAR measurement uncertainty must be  $\leq 30\%$ , for a confidence interval of  $k = 2$ . If these conditions are met, extensive SAR measurement uncertainty analysis described in IEEE Std 1528-2013 is not required in SAR reports submitted for equipment approval. For this device, the highest measured 1-g SAR is less 1.5W/kg. Therefore, the measurement uncertainty table is not required in this report.

Declaration of Conformity:

The test results with all measurement uncertainty excluded is presented in accordance with the regulation limits or requirements declared by manufacturers.

Comments and Explanations:

The declared of product specification for EUT presented in the report are provided by the manufacturer, and the manufacturer takes all the responsibilities for the accuracy of product specification.

## **16. References**

- [1] FCC 47 CFR Part 2 "Frequency Allocations and Radio Treaty Matters; General Rules and Regulations"
- [2] ANSI/IEEE Std. C95.1-1992, "IEEE Standard for Safety Levels with Respect to Human Exposure to Radio Frequency Electromagnetic Fields, 3 kHz to 300 GHz", September 1992
- [3] IEEE Std. 1528-2013, "IEEE Recommended Practice for Determining the Peak Spatial-Average Specific Absorption Rate (SAR) in the Human Head from Wireless Communications Devices: Measurement Techniques", Sep 2013
- [1] SPEAG DASY System Handbook
- [2] FCC KDB 248227 D01 v02r02, "SAR Guidance for IEEE 802.11 (WiFi) Transmitters", Oct 2015.
- [3] FCC KDB 447498 D01 v06, "Mobile and Portable Device RF Exposure Procedures and Equipment Authorization Policies", Oct 2015
- [4] FCC KDB 616217 D04 v01r02, "SAR Evaluation Considerations for Laptop, Notebook, Netbook and Tablet Computers", Oct 2015
- [5] FCC KDB 865664 D01 v01r04, "SAR Measurement Requirements for 100 MHz to 6 GHz", Aug 2015.
- [6] FCC KDB 865664 D02 v01r02, "RF Exposure Compliance Reporting and Documentation Considerations" Oct 2015.