

System Performance Check-2450MHz

Communication System: UID 0, CW (0); Communication System Band: D2450 (2450.0 MHz);

Frequency: 2450 MHz;

Medium parameters used: $f = 2450$ MHz; $\sigma = 1.826$ S/m; $\epsilon_r = 38.634$; $\rho = 1000$ kg/m³

Phantom section: Flat Section

DASY Configuration:

- Probe: EX3DV4 - SN7383; ConvF(7.75, 7.75, 7.75); Calibrated: 2020/11/30;
- Sensor-Surface: 2.5mm (Mechanical Surface Detection), $z = 1.0, 31.0$
- Electronics: DAE3 Sn427; Calibrated: 2020/3/31
- Phantom: ELI v5.0; Type: QDOVA002AA; Serial: 1235
- DASY52 52.8.8(1222); SEMCAD X 14.6.10(7331)

Configuration/Flat Section/Area Scan (6x8x1): Measurement grid: $dx=12$ mm, $dy=12$ mm

Maximum value of SAR (measured) = 6.74 W/kg

Configuration/Flat Section/Zoom Scan (7x7x7)/Cube 0: Measurement grid: $dx=5$ mm,

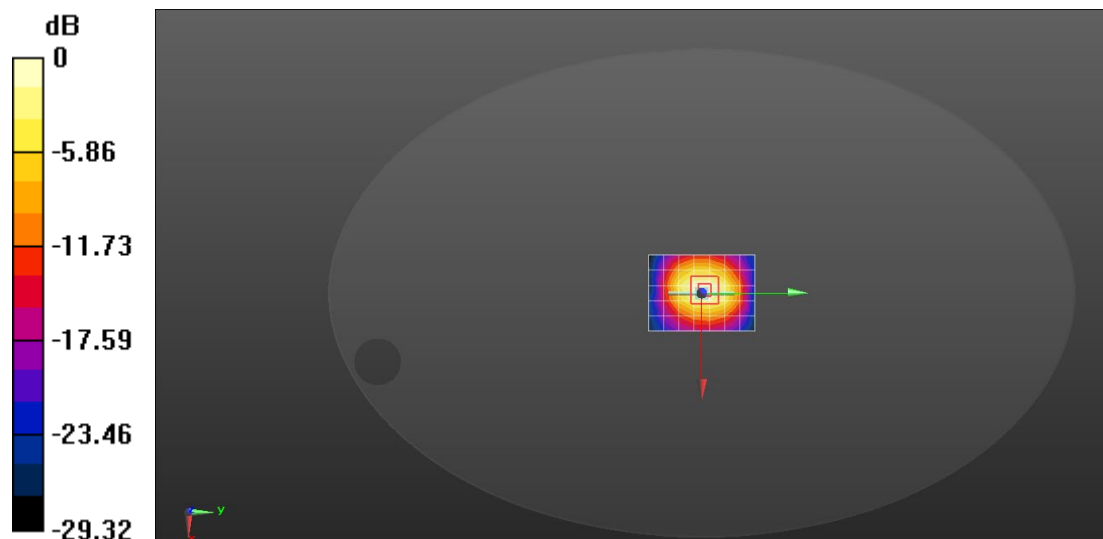
$dy=5$ mm, $dz=5$ mm

Reference Value = 56.13 V/m; Power Drift = 0.11 dB

Peak SAR (extrapolated) = 11.8 W/kg

SAR(1 g) = 5.39 W/kg; SAR(10 g) = 2.44 W/kg

Maximum value of SAR (measured) = 7.80 W/kg



0 dB = 6.74 W/kg = 8.29 dBW/kg