

Plot 1

Measurement Report for 1925, DEFAULT, WLAN 2.4GHz, IEEE 802.11b WIFI 2.4 GHz (DSSS, 1 Mbps), Channel 11 (2462.0 MHz) Chain 0

Device under Test Properties

Name, Manufacturer	Dimensions [mm]	IMEI	DUT Type
1925 900016591056	90.0 x 135.0 x 35.0		Headset

Exposure Conditions

Phantom Section, TSL	Position, Test Distance [mm]	Band	Group, UID	Frequency [MHz], Channel Number	Conversion Factor	TSL Conductivity [S/m]	TSL Permittivity
Head, HSL	DEFAULT, 0	WLAN 2.4GHz	WLAN, 10012-CAB	2462.0, 11	7.32	1.88	37.5

Hardware Setup

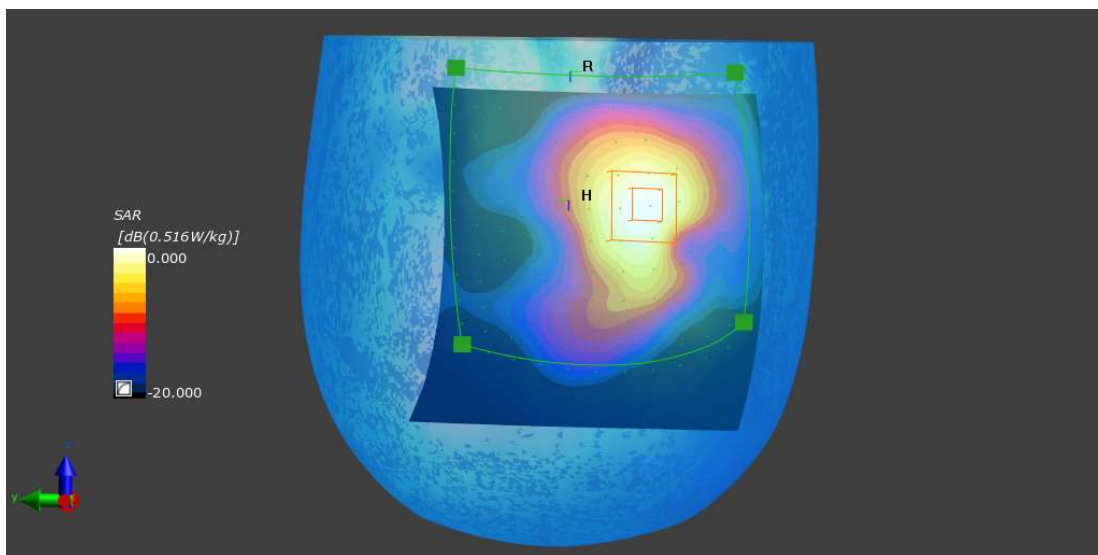
Phantom	TSL, Measured Date	Probe, Calibration Date	DAE, Calibration Date
SAM-HeadStand V10.0 - 1007	HBBL600-6000_160212-1 Charge: 160212-1, --	EX3DV4 - SN3940, 2019-07-17	DAE4 Sn1384, 2019-07-08

Scan Setup

	Area Scan	Zoom Scan
	Area Scan	Zoom Scan
Grid Extents [mm]	106.587237604 x 105.192878529	30.0 x 30.0 x 30.0
Grid Steps [mm]	106.587237604 x 105.192878529	5.0 x 5.0 x 5.0
Sensor Surface [mm]	3.0	3.0
Graded Grid	No	No
Grading Ratio	n/a	n/a
MAIA	MAIA not used	MAIA not used
Surface Detection	Mother Scan	Mother Scan

Measurement Results

	Area Scan	Zoom Scan
Date	2019-09-10, 22:06	2019-09-10, 22:17
SAR 1g [W/Kg]	0.389	0.361
SAR 10g [W/Kg]	0.180	0.175
Power Drift [dB]		-0.14
Power Scaling	Disabled	Disabled
Scaling Factor		
TSL Correction	No correction	No correction



Plot 2

Measurement Report for 1925, DEFAULT, WLAN 2.4GHz, IEEE 802.11b WIFI 2.4 GHz (DSSS, 1 Mbps), Channel 11 (2462.0 MHz) - Chain 1

Device under Test Properties

Name, Manufacturer	Dimensions [mm]	IMEI	DUT Type
1925 900016591056	90.0 x 135.0 x 35.0		Headset

Exposure Conditions

Phantom Section, TSL	Position, Test Distance [mm]	Band	Group, UID	Frequency [MHz], Channel Number	Conversion Factor	TSL Conductivity [S/m]	TSL Permittivity
Head, HSL	DEFAULT, 0	WLAN 2.4GHz	WLAN, 10012-CAB	2462.0, 11	7.32	1.88	37.5

Hardware Setup

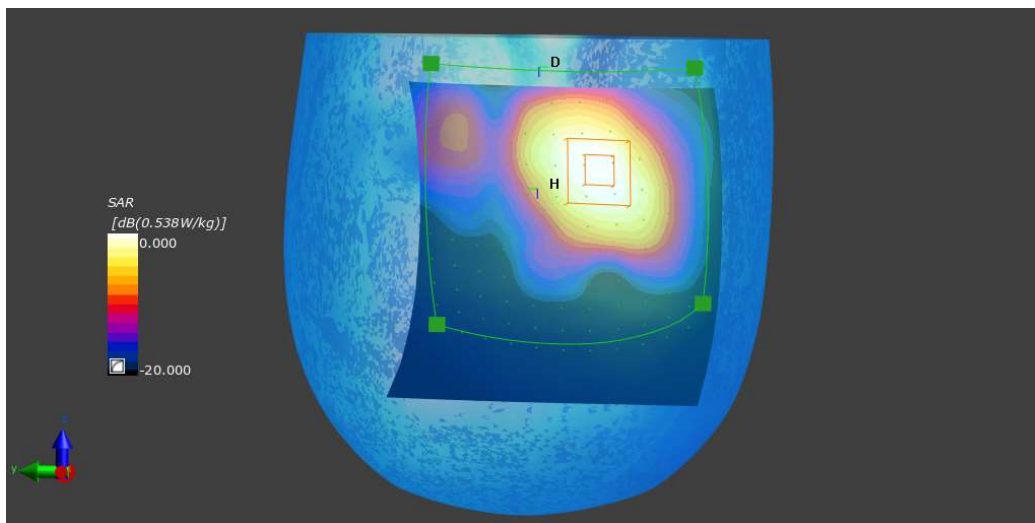
Phantom	TSL, Measured Date	Probe, Calibration Date	DAE, Calibration Date
AM-HeadStand V10.0 - 1007	HBBL600-6000_160212-1 Charge: 160212-1, --	EX3DV4 - SN3940, 2019-07-17	DAE4 Sn1384, 2019-07-08

Scan Setup

	Area Scan	Zoom Scan
Grid Extents [mm]	106.587237604 x 105.192878529	30.0 x 30.0 x 30.0
Grid Steps [mm]	106.587237604 x 105.192878529	5.0 x 5.0 x 5.0
Sensor Surface [mm]	3.0	3.0
Graded Grid	No	No
Grading Ratio	n/a	n/a
MAIA	MAIA not used	MAIA not used
Surface Detection	Mother Scan	Mother Scan
Scan Method	Measured	Measured

Measurement Results

	Area Scan	Zoom Scan
Date	2019-09-10, 23:04	2019-09-10, 23:16
SAR 1g [W/Kg]	0.422	0.410
SAR 10g [W/Kg]	0.217	0.221
Power Drift [dB]		-0.16
Power Scaling	Disabled	Disabled
Scaling Factor [dB]		
TSL Correction	No correction	No correction



Plot 3

Measurement Report for 1925, DEFAULT, WLAN 5GHz, IEEE 802.11n (HT Greenfield, 13.5 Mbps, BPSK), Channel 54 (5270.0 MHz) – Chain 0

Device under Test Properties

Name, Manufacturer	Dimensions [mm]	IMEI	DUT Type
1925 900016591056	90.0 x 135.0 x 35.0		Headset

Exposure Conditions

Phantom Section, TSL	Position, Test Distance [mm]	Band	Group, UID	Frequency [MHz], Channel Number	Conversion Factor	TSL Conductivity [S/m]	TSL Permittivity
ead, HSL	DEFAULT, 0	WLAN 5GHz	WLAN, 10114-CAB	5270.0, 54	5.08	4.58	36.4

Hardware Setup

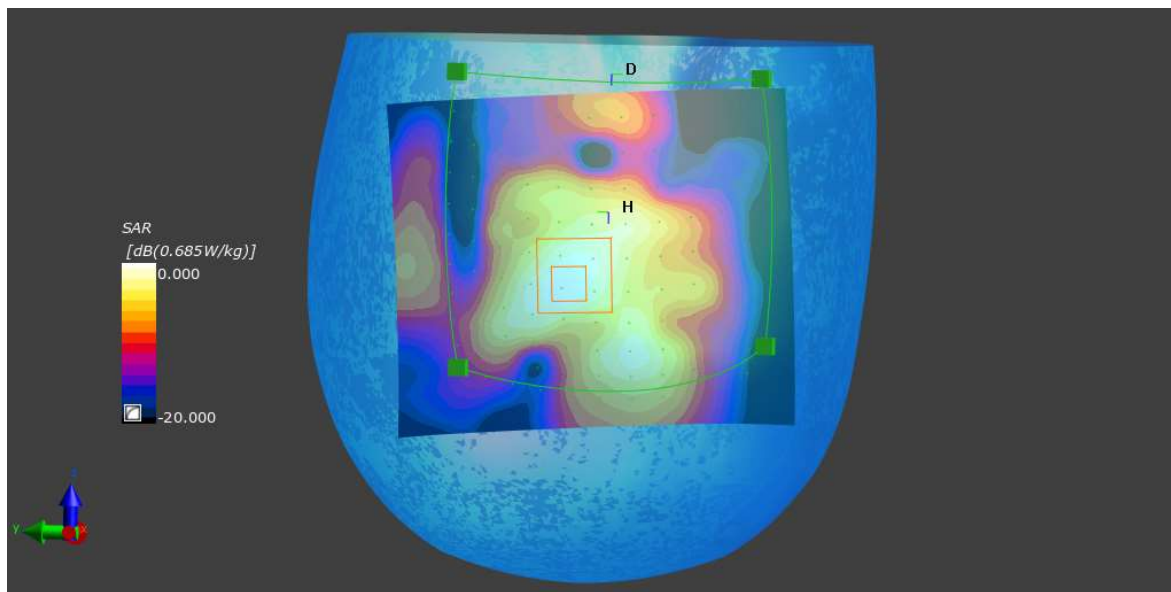
Phantom	TSL, Measured Date	Probe, Calibration Date	DAE, Calibration Date
SAM-HeadStand V10.0 – 1007	HBBL 600-6000 160212-1 HBBL600-6000 160212-1, --	EX3DV4 – SN3940, 2019-07-17	DAE4 Sn1384, 2019-07-08

Scan Setup

	Area Scan	Zoom Scan
Grid Extents [mm]	113.142994417 x 97.8855990133	22.0 x 22.0 x 22.0
Grid Steps [mm]	113.142994417 x 97.8855990133	4.0 x 4.0 x 2.0
Sensor Surface [mm]	3.0	3.0
Graded Grid	No	No
Grading Ratio	n/a	n/a
MAIA	MAIA not used	MAIA not used
Surface Detection	Mother Scan	Mother Scan
Scan Method	Measured	Measured

Measurement Results

	Area Scan	Zoom Scan
Date	2019-09-11, 10:59	2019-09-11, 11:13
SAR 1g [W/Kg]	0.472	0.505
SAR 10g [W/Kg]	0.181	0.190
Power Drift [dB]	n/a	-0.16
Power Scaling	Disabled	Disabled
Scaling Factor [dB]		
TSL Correction	No correction	No correction



Plot 4

Measurement Report for 1925, DEFAULT, WLAN 5GHz, IEEE 802.11n (HT Greenfield, 13.5 Mbps, BPSK), Channel 54 (5270.0 MHz) – Chain 1

Device under Test Properties

Name, Manufacturer	Dimensions [mm]	IMEI	DUT Type
1925 900016591056	90.0 x 135.0 x 35.0		Headset

Exposure Conditions

Phantom Section, TSL	Position, Test Distance [mm]	Band	Group, UID	Frequency [MHz], Channel Number	Conversion Factor	TSL Conductivity [S/m]	TSL Permittivity
Head, HSL	DEFAULT, 0	WLAN 5GHz	WLAN, 10114-CAB	5270.0, 54	5.08	4.58	36.4

Hardware Setup

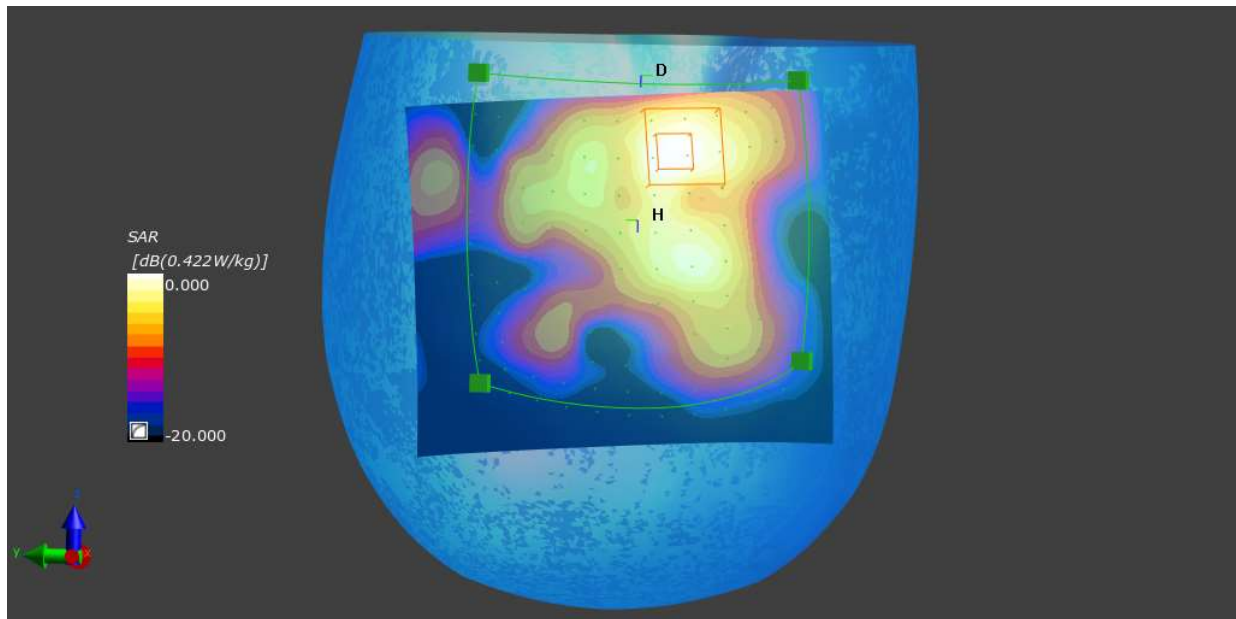
Phantom	TSL, Measured Date	Probe, Calibration Date	DAE, Calibration Date
SAM-HeadStand V10.0 – 1007	HBBL 600-6000 160212-1 HBBL600-6000 160212-1, --	EX3DV4 – SN3940, 2019-07-17	DAE4 Sn1384, 2019-07-08

Scan Setup

	Area Scan	Zoom Scan
Grid Extents [mm]	113.142994417 x 97.8855990133	22.0 x 22.0 x 22.0
Grid Steps [mm]	113.142994417 x 97.8855990133	4.0 x 4.0 x 2.0
Sensor Surface [mm]	3.0	3.0
Graded Grid	No	No
Grading Ratio	n/a	n/a
MAIA	MAIA not used	MAIA not used
Surface Detection	Mother Scan	Mother Scan
Scan Method	Measured	Measured

Measurement Results

	Area Scan	Zoom Scan
Date	2019-09-11, 11:23	2019-09-11, 11:38
SAR 1g [W/Kg]	0.284	0.294
SAR 10g [W/Kg]	0.101	0.103
Power Drift [dB]		-0.13
Power Scaling	Disabled	Disabled
Scaling Factor [dB]		
TSL Correction	No correction	No correction



Plot 5

Measurement Report for 1925, DEFAULT, WLAN 5GHz, IEEE 802.11ac WiFi (80MHz, MCS0, 99pc duty cycle), Channel 122 (5610.0 MHz) – Chain 0

Device under Test Properties

Name, Manufacturer	Dimensions [mm]	IMEI	DUT Type
1925 900016591056	90.0 x 135.0 x 35.0		Headset

Exposure Conditions

Phantom Section, TSL	Position, Test Distance [mm]	Band	Group, UID	Frequency [MHz], Channel Number	Conversion Factor	TSL Conductivity [S/m]	TSL Permittivity
Head, HSL	DEFAULT, 0	WLAN 5GHz	WLAN, 10544-AAA	5610.0, 122	4.66	4.94	35.8

Hardware Setup

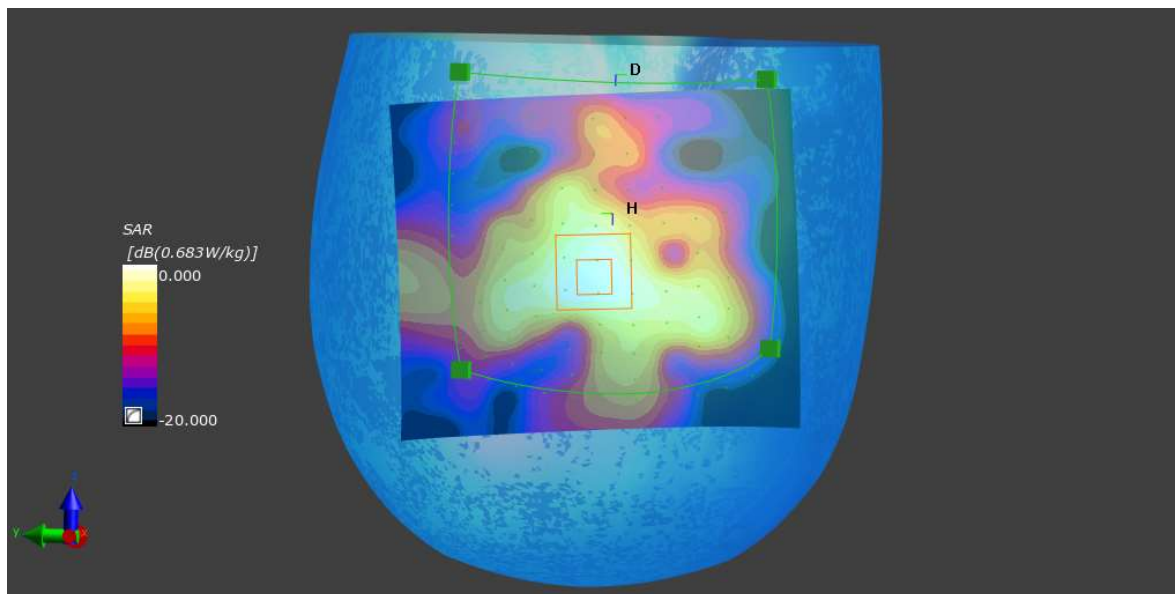
Phantom	TSL, Measured Date	Probe, Calibration Date	DAE, Calibration Date
SAM-HeadStand V10.0 – 1007	HBBL 600-6000 160212-1 HBBL600-6000 160212-1, --	EX3DV4 – SN3940, 2019-07-17	DAE4 Sn1384, 2019-07-08

Scan Setup

	Area Scan	Zoom Scan
Grid Extents [mm]	113.142994417 x 97.8855990133	22.0 x 22.0 x 22.0
Grid Steps [mm]	113.142994417 x 97.8855990133	4.0 x 4.0 x 2.0
Sensor Surface [mm]	3.0	3.0
Graded Grid	No	No
Grading Ratio	n/a	n/a
MAIA	MAIA not used	MAIA not used
Surface Detection	Mother Scan	Mother Scan
Scan Method	Measured	Measured

Measurement Results

	Area Scan	Zoom Scan
Date	2019-09-11, 11:50	2019-09-11, 12:05
SAR 1g [W/Kg]	0.496	0.503
SAR 10g [W/Kg]	0.194	0.189
Power Drift [dB]		-0.18
Power Scaling	Disabled	Disabled
Scaling Factor [dB]		
TSL Correction	No correction	No correction



Plot 6

Measurement Report for 1925, DEFAULT, WLAN 5GHz, IEEE 802.11ac WiFi (80MHz, MCS0, 99pc duty cycle), Channel 122 (5610.0 MHz) – Chain 1

Device under Test Properties

Name, Manufacturer	Dimensions [mm]	IMEI	DUT Type
1925 900016591056	90.0 x 135.0 x 35.0		Headset

Exposure Conditions

Phantom Section, TSL	Position, Test Distance [mm]	Band	Group, UID	Frequency [MHz], Channel Number	Conversion Factor	TSL Conductivity [S/m]	TSL Permittivity
Head, HSL	DEFAULT, 0	WLAN 5GHz	WLAN, 10544-AAA	5610.0, 122	4.66	4.94	35.8

Hardware Setup

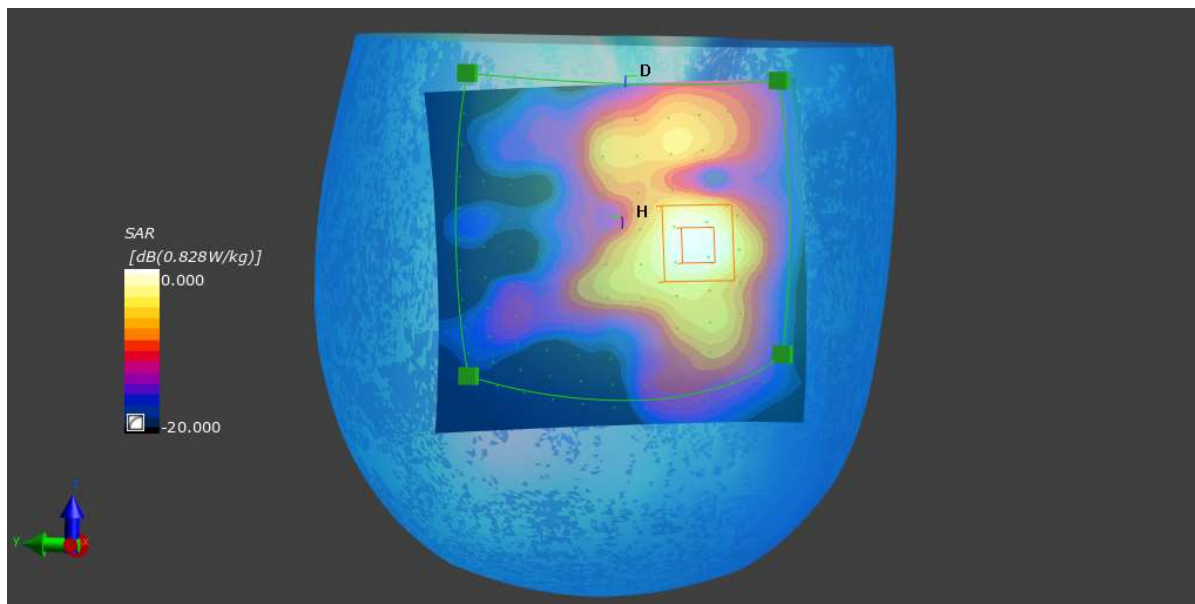
Phantom	TSL, Measured Date	Probe, Calibration Date	DAE, Calibration Date
SAM-HeadStand V10.0 – 1007	HBBL 600-6000 160212-1 HBBL600-6000 160212-1, --	EX3DV4 – SN3940, 2019-07-17	DAE4 Sn1384, 2019-07-08

Scan Setup

	Area Scan	Zoom Scan
Grid Extents [mm]	103.901030399 x 91.574274613	22.0 x 22.0 x 22.0
Grid Steps [mm]	103.901030399 x 91.574274613	4.0 x 4.0 x 2.0
Sensor Surface [mm]	3.0	3.0
Graded Grid	No	No
Grading Ratio	n/a	n/a
MAIA	MAIA not used	MAIA not used
Surface Detection	Mother Scan	Mother Scan
Scan Method	Measured	Measured

Measurement Results

	Area Scan	Zoom Scan
Date	2019-09-11, 14:54	2019-09-11, 15:09
SAR 1g [W/Kg]	0.592	0.561
SAR 10g [W/Kg]	0.204	0.199
Power Drift [dB]		-0.19
Power Scaling	Disabled	Disabled
Scaling Factor [dB]		
TSL Correction	No correction	No correction



Plot 7

Measurement Report for 1925, DEFAULT, WLAN 5GHz, IEEE 802.11 ac WiFi (80MHz, MCS0, 99pc duty cycle), Channel 138 (5690.0 MHz) – Chain 0

Device under Test Properties

Name, Manufacturer	Dimensions [mm]	IMEI	DUT Type
1925 900016591056	90.0 x 135.0 x 35.0		Headset

Exposure Conditions

Phantom Section, TSL	Position, Test Distance [mm]	Band	Group, UID	Frequency [MHz], Channel Number	Conversion Factor	TSL Conductivity [S/m]	TSL Permittivity
Head, HSL	DEFAULT, 0	WLAN 5GHz	WLAN, 10544-AAA	5690.0, 138	4.8	5.04	35.7

Hardware Setup

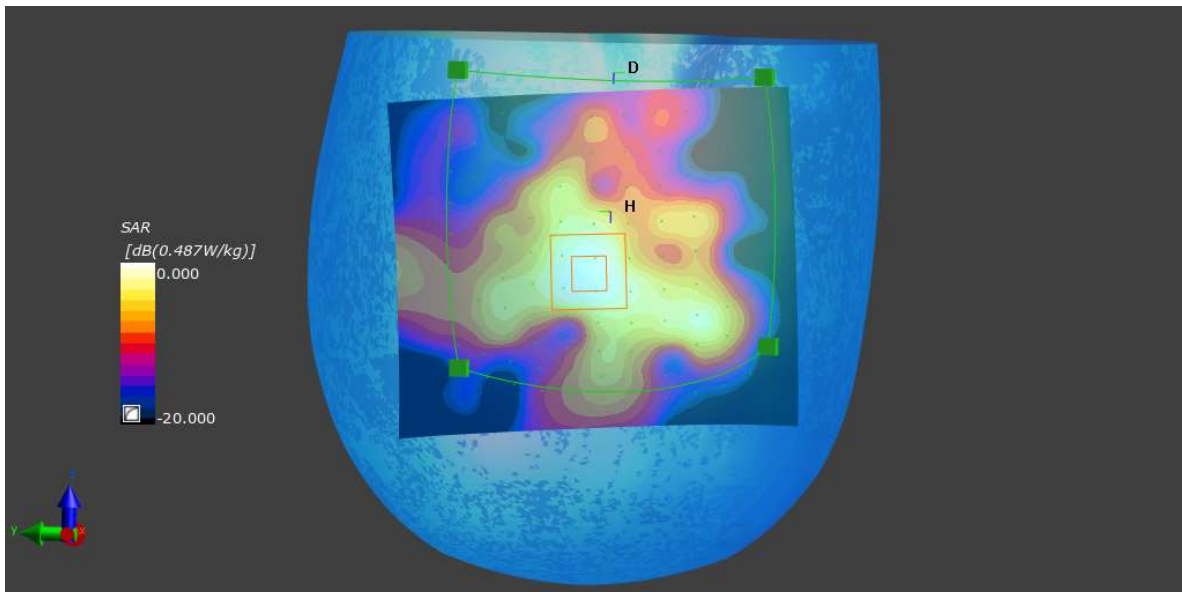
Phantom	TSL, Measured Date	Probe, Calibration Date	DAE, Calibration Date
SAM-HeadStand V10.0 – 1007	HBBL 600-6000 160212-1 HBBL600-6000 160212-1, --	EX3DV4 – SN3940, 2019-07-17	DAE4 Sn1384, 2019-07-08

Scan Setup

	Area Scan	Zoom Scan
Grid Extents [mm]	113.142994417 x 97.8855990133	22.0 x 22.0 x 22.0
Grid Steps [mm]	113.142994417 x 97.8855990133	4.0 x 4.0 x 2.0
Sensor Surface [mm]	3.0	3.0
Graded Grid	No	No
Grading Ratio	n/a	n/a
MAIA	MAIA not used	MAIA not used
Surface Detection	Mother Scan	Mother Scan
Scan Method	Measured	Measured

Measurement Results

	Area Scan	Zoom Scan
Date	2019-09-11, 12:40	2019-09-11, 12:56
SAR 1g [W/Kg]	0.350	0.366
SAR 10g [W/Kg]	0.129	0.129
Power Drift [dB]		-0.17
Power Scaling	Disabled	Disabled
Scaling Factor [dB]		
TSL Correction	No correction	No correction



Plot 8

Measurement Report for 1925, DEFAULT, WLAN 5GHz, IEEE 802.11ac WiFi (80MHz, MCS0, 99pc duty cycle), Channel 138 (5690.0 MHz) – Chain 1

Device under Test Properties

Name, Manufacturer	Dimensions [mm]	IMEI	DUT Type
1925 900016591056	90.0 x 135.0 x 35.0		Headset

Exposure Conditions

Phantom Section, TSL	Position, Test Distance [mm]	Band	Group, UID	Frequency [MHz], Channel Number	Conversion Factor	TSL Conductivity [S/m]	TSL Permittivity
Head, HSL	DEFAULT, 0	WLAN 5GHz	WLAN, 10544-AAA	5690.0, 138	4.8	5.04	35.7

Hardware Setup

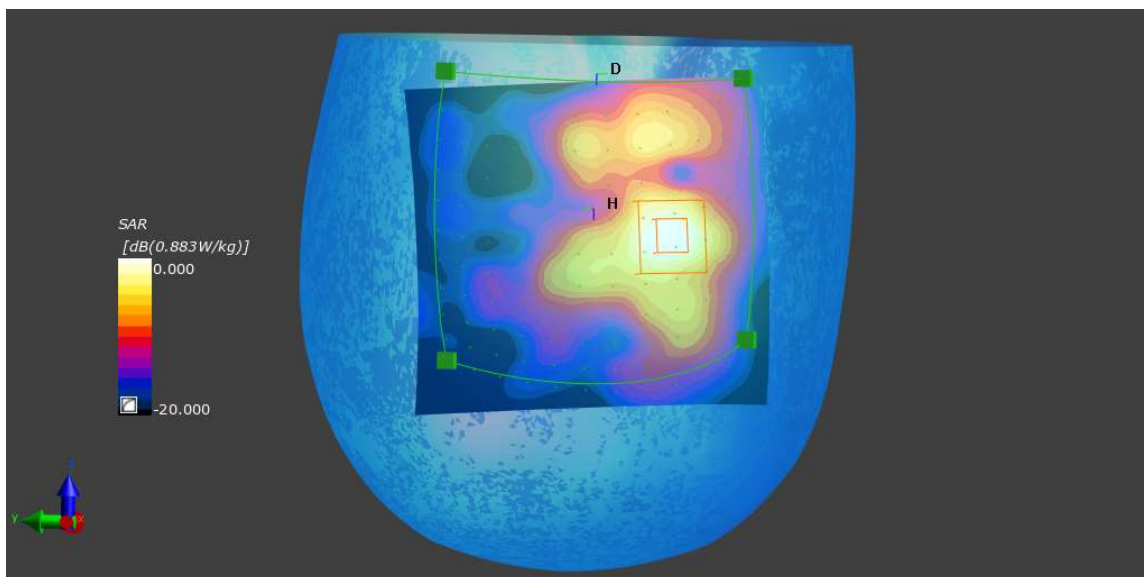
Phantom	TSL, Measured Date	Probe, Calibration Date	DAE, Calibration Date
SAM-HeadStand V10.0 – 1007	HBBL 600-6000 160212-1 HBBL600-6000 160212-1, --	EX3DV4 – SN3940, 2019-07-17	DAE4 Sn1384, 2019-07-08

Scan Setup

	Area Scan	Zoom Scan
Grid Extents [mm]	103.901030399 x 91.574274613	22.0 x 22.0 x 22.0
Grid Steps [mm]	103.901030399 x 91.574274613	4.0 x 4.0 x 2.0
Sensor Surface [mm]	3.0	3.0
Graded Grid	No	No
Grading Ratio	n/a	n/a
MAIA	MAIA not used	MAIA not used
Surface Detection	Mother Scan	Mother Scan
Scan Method	Measured	Measured

Measurement Results

	Area Scan	Zoom Scan
Date	2019-09-11, 14:28	2019-09-11, 14:43
SAR 1g [W/Kg]	0.616	0.553
SAR 10g [W/Kg]	0.202	0.191
Power Drift [dB]		-0.13
Power Scaling	Disabled	Disabled
Scaling Factor [dB]		
TSL Correction	No correction	No correction



Plot 9

Measurement Report for 1925, DEFAULT, ISM 2.4 GHz Band, IEEE 802.15.1 Bluetooth (GFSK, DH5), Channel 79 (2480.0 MHz)

Device under Test Properties

Name, Manufacturer	Dimensions [mm]	IMEI	DUT Type
1925 900016591056	90.0 x 135.0 x 35.0		Headset

Exposure Conditions

Phantom Section, TSL	Position, Test Distance [mm]	Band	Group, UID	Frequency [MHz], Channel Number	Conversion Factor	TSL Conductivity [S/m]	TSL Permittivity
Head, HSL	DEFAULT, 0	ISM 2.4 GHz Band	Bluetooth, 10032-CAA	2480.0, 79	7.32	1.89	37.5

Hardware Setup

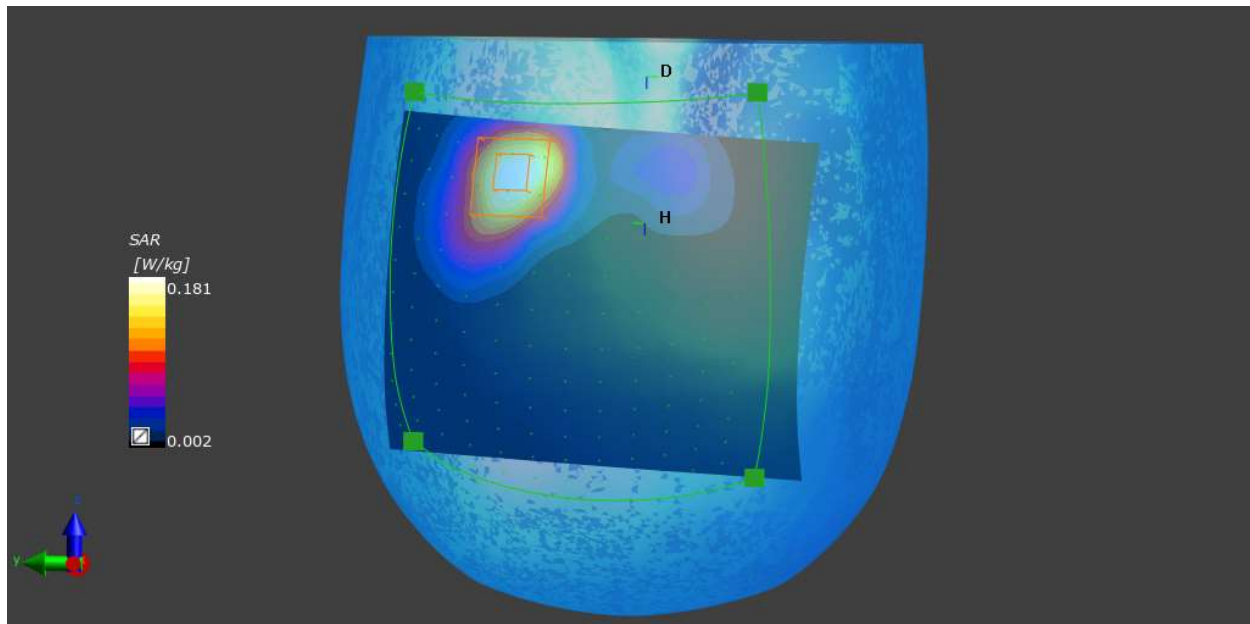
Phantom	TSL, Measured Date	Probe, Calibration Date	DAE, Calibration Date
SAM-HeadStand V10.0 - 1007	HBBL600-6000_160212-1 Charge: 160212-1, --	EX3DV4 - SN3940, 2019-07-17	DAE4 Sn1384, 2019-07-08

Scan Setup

	Area Scan	Zoom Scan
Grid Extents [mm]	119.163250632 x 95.8153958871	30.0 x 30.0 x 30.0
Grid Steps [mm]	119.163250632 x 95.8153958871	5.0 x 5.0 x 5.0
Sensor Surface [mm]	3.0	3.0
Graded Grid	No	No
Grading Ratio	n/a	n/a
MAIA	MAIA not used	MAIA not used
Surface Detection	Mother Scan	Mother Scan
Scan Method	Measured	Measured

Measurement Results

	Area Scan	Zoom Scan
Date	2019-09-10, 23:27	2019-09-10, 23:39
SAR 1g [W/Kg]	0.142	0.142
SAR 10g [W/Kg]	0.073	0.074
Power Drift [dB]		-0.01
Power Scaling	Disabled	Disabled
Scaling Factor [dB]		
TSL Correction	No correction	No correction



Plot 10

Measurement Report for Dipole, D2450, CW, Channel 0 (2450.0 MHz)

Device under Test Properties

Name, Manufacturer	Dimensions [mm]	IMEI	DUT Type
Dipole D2450V2-917			Dipole

Exposure Conditions

Phantom Section, TSL	Position, Test Distance [mm]	Band	Group, UID	Frequency [MHz], Channel Number	Conversion Factor	TSL Conductivity [S/m]	TSL Permittivity
Flat, HSL	Flat, 10		CW, 0--	2450.0, 0	7.32	1.87	37.5

Hardware Setup

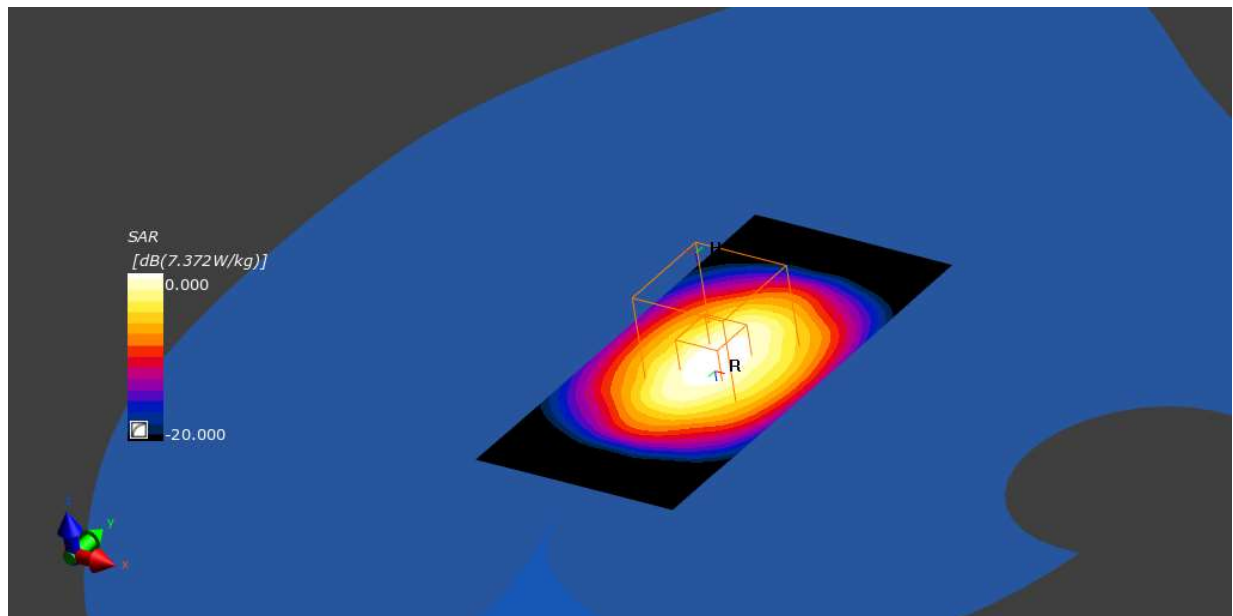
Phantom	TSL, Measured Date	Probe, Calibration Date	DAE, Calibration Date
win-SAM V5.0 (30deg probe tilt) - 1779	HBBL600-6000_160212-1 Charge: 160212-1, --	EX3DV4 - SN3940, 2019-07-17	DAE4 Sn1384, 2019-07-08

Scan Setup

	Area Scan	Zoom Scan
Grid Extents [mm]	48.0 x 96.0	30.0 x 30.0 x 30.0
Grid Steps [mm]	48.0 x 96.0	5.0 x 5.0 x 5.0
Sensor Surface [mm]	3.0	1.4
Graded Grid	No	No
Grading Ratio	n/a	n/a
MAIA	MAIA not used	MAIA not used
Surface Detection	Mother Scan	6-point verification
Scan Method	Measured	Measured

Measurement Results

	Area Scan	Zoom Scan
Date	2019-09-10, 19:41	2019-09-10, 19:48
SAR 1g [W/Kg]	5.58	5.69
SAR 10g [W/Kg]	2.55	2.61
Power Drift [dB]		-0.09
Power Scaling	Disabled	Disabled
Scaling Factor [dB]		
TSL Correction	No correction	No correction



Plot 11

Measurement Report for Dipole, D5GHz, CW, Channel 0 (5250.0 MHz)

Device under Test Properties

Name, Manufacturer	Dimensions [mm]	IMEI	DUT Type
Dipole D5GHzV2-1159			Dipole

Exposure Conditions

Phantom Section, TSL	Position, Test Distance [mm]	Band	Group, UID	Frequency [MHz], Channel Number	Conversion Factor	TSL Conductivity [S/m]	TSL Permittivity
Flat, HSL	Flat, 10		CW, 0--	5250.0, 0	5.08	4.56	36.5

Hardware Setup

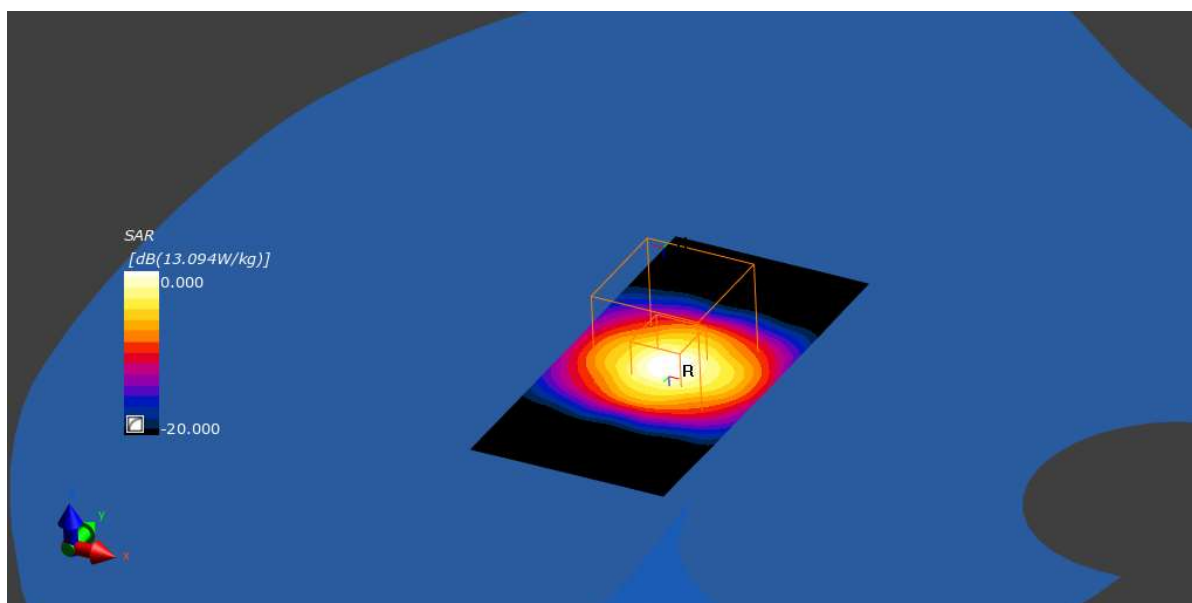
Phantom	TSL, Measured Date	Probe, Calibration Date	DAE, Calibration Date
win-SAM V5.0 (30deg probe tilt) - 1779	HBBL 600-6000 160212-1 HBBL600-6000 160212-1, --	EX3DV4 - SN3940, 2019-07-17	DAE4 Sn1384, 2019-07-08

Scan Setup

	Area Scan	Zoom Scan
Grid Extents [mm]	40.0 x 80.0	22.0 x 22.0 x 22.0
Grid Steps [mm]	40.0 x 80.0	4.0 x 4.0 x 2.0
Sensor Surface [mm]	3.0	1.4
Graded Grid	No	No
Grading Ratio	n/a	n/a
MAIA	MAIA not used	MAIA not used
Surface Detection	Mother Scan	6-point verification
Scan Method	Measured	Measured

Measurement Results

	Area Scan	Zoom Scan
Date	2019-09-11, 00:21	2019-09-11, 00:32
SAR 1g [W/Kg]	7.90	7.79
SAR 10g [W/Kg]	2.23	2.19
Power Drift [dB]		0.13
Power Scaling	Disabled	Disabled
Scaling Factor [dB]		
TSL Correction	No correction	No correction



Plot 12

Measurement Report for Dipole, D5GHz, CW, Channel 0 (5600.0 MHz)

Device under Test Properties

Name, Manufacturer	Dimensions [mm]	IMEI	DUT Type
Dipole D5GHzV2-1159			Dipole

Exposure Conditions

Phantom Section, TSL	Position, Test Distance [mm]	Band	Group, UID	Frequency [MHz], Channel Number	Conversion Factor	TSL Conductivity [S/m]	TSL Permittivity
Flat, HSL	Flat, 10		CW, 0--	5600.0, 0	4.66	4.93	35.9

Hardware Setup

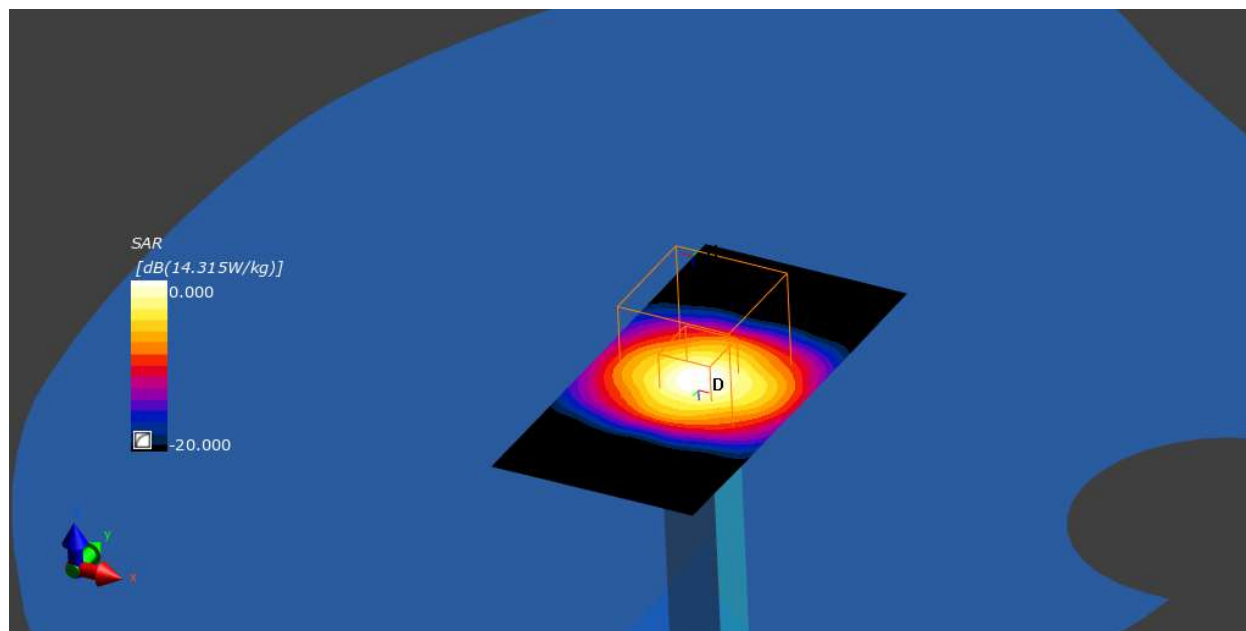
Phantom	TSL, Measured Date	Probe, Calibration Date	DAE, Calibration Date
Twin-SAM V5.0 (30deg probe tilt) - 1779	HBBL 600-6000 160212-1 HBBL600-6000 160212-1, --	EX3DV4 - SN3940, 2019-07-17	DAE4 Sn1384, 2019-07-08

Scan Setup

	Area Scan	Zoom Scan
Grid Extents [mm]	40.0 x 80.0	22.0 x 22.0 x 22.0
Grid Steps [mm]	40.0 x 80.0	4.0 x 4.0 x 2.0
Sensor Surface [mm]	3.0	1.4
Graded Grid	No	No
Grading Ratio	n/a	n/a
MAIA	MAIA not used	MAIA not used
Surface Detection	Mother Scan	6-point verification
Scan Method	Measured	Measured

Measurement Results

	Area Scan	Zoom Scan
Date	2019-09-11, 00:37	2019-09-11, 00:48
SAR 1g [W/Kg]	8.74	8.54
SAR 10g [W/Kg]	2.43	2.37
Power Drift [dB]		0.17
Power Scaling	Disabled	Disabled
Scaling Factor [dB]		
TSL Correction	No correction	No correction



Plot 13

Measurement Report for Dipole, D5GHz, CW, Channel 0 (5750.0MHz)

Device under Test Properties

Name, Manufacturer	Dimensions [mm]	IMEI	DUT Type
Dipole D5GHzV2-1159			Dipole

Exposure Conditions

Phantom Section, TSL	Position, Test Distance [mm]	Band	Group, UID	Frequency [MHz], Channel Number	Conversion Factor	TSL Conductivity [S/m]	TSL Permittivity
Flat, HSL	Flat, 10		CW, 0--	5750.0, 0	4.8	5.09	35.5

Hardware Setup

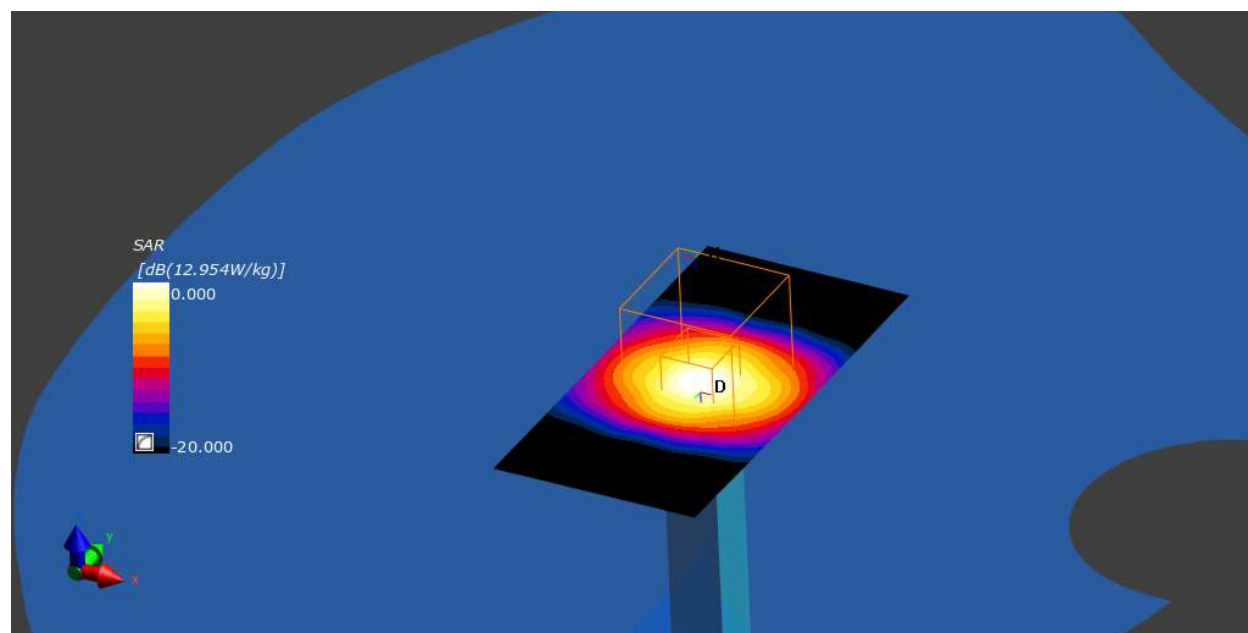
Phantom	TSL, Measured Date	Probe, Calibration Date	DAE, Calibration Date
Twin-SAM V5.0 (30deg probe tilt) - 1779	HBBL 600-6000 160212-1 HBBL600-6000 160212-1, --	EX3DV4 - SN3940, 2019-07-17	DAE4 Sn1384, 2019-07-08

Scan Setup

	Area Scan	Zoom Scan
Grid Extents [mm]	40.0 x 80.0	22.0 x 22.0 x 22.0
Grid Steps [mm]	40.0 x 80.0	4.0 x 4.0 x 2.0
Sensor Surface [mm]	3.0	1.4
Graded Grid	No	No
Grading Ratio	n/a	n/a
MAIA	MAIA not used	MAIA not used
Surface Detection	Mother Scan	6-point verification
Scan Method	Measured	Measured

Measurement Results

	Area Scan	Zoom Scan
Date	2019-09-11, 00:53	2019-09-11, 01:03
SAR 1g [W/Kg]	8.00	7.75
SAR 10g [W/Kg]	2.24	2.16
Power Drift [dB]		0.18
Power Scaling	Disabled	Disabled
Scaling Factor [dB]		
TSL Correction	No correction	No correction



Plot 14

Measurement Report for Dipole, Point A 90 Degrees, D2450, CW, Channel 50 (2450.0 MHz)

Device under Test Properties

Name, Manufacturer	Dimensions [mm]	IMEI	DUT Type
Dipole D2450V2-917			Dipole

Exposure Conditions

Phantom Section, TSL	Position, Test Distance [mm]	Band	Group, UID	Frequency [MHz], Channel Number	Conversion Factor	TSL Conductivity [S/m]	TSL Permittivity
Head, HSL	Point A, 10	D2450	CW, 0--	2450.0, 50	7.32	1.87	37.5

Hardware Setup

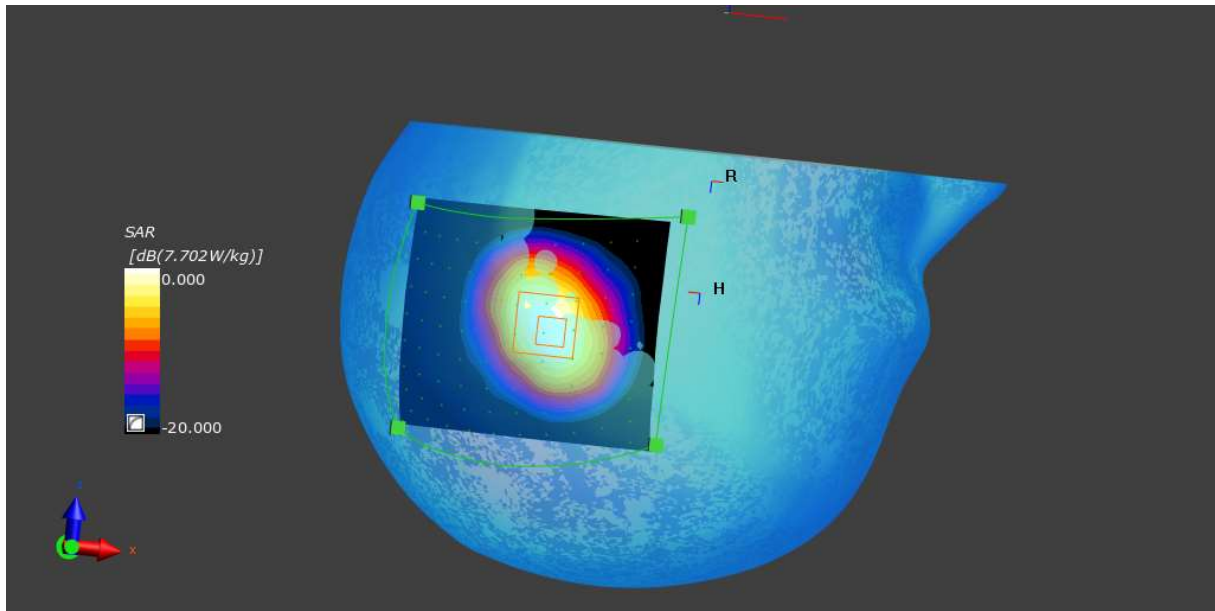
Phantom	TSL, Measured Date	Probe, Calibration Date	DAE, Calibration Date
SAM-HeadStand V10.0 - 1007	HBBL600-6000_160212-1 Charge: 160212-1, --	EX3DV4 - SN3940, 2019-07-17	DAE4 Sn1384, 2019-07-08

Scan Setup

	Area Scan	Zoom Scan
Grid Extents [mm]	90.9089549176 x 83.2465065522	30.0 x 30.0 x 30.0
Grid Steps [mm]	90.9089549176 x 83.2465065522	5.0 x 5.0 x 5.0
Sensor Surface [mm]	3.0	3.0
Graded Grid	No	No
Grading Ratio	n/a	n/a
MAIA	MAIA not used	MAIA not used
Surface Detection	Mother Scan	Mother Scan
Scan Method	Measured	Measured

Measurement Results

	Area Scan	Zoom Scan
Date	2019-09-10, 20:25	2019-09-10, 20:36
SAR 1g [W/Kg]	5.86	5.79
SAR 10g [W/Kg]	2.80	2.72
Power Drift [dB]		0.00
Power Scaling	Disabled	Disabled
Scaling Factor [dB]		
TSL Correction	No correction	No correction



Plot 15

Measurement Report for Dipole, Point A 90 Degrees, D5GHz, CW, Channel 80 (5800.0 MHz)

Device under Test Properties

Name, Manufacturer	Dimensions [mm]	IMEI	DUT Type
Dipole D5GHzV2-1159			Dipole

Exposure Conditions

Phantom Section, TSL	Position, Test Distance [mm]	Band	Group, UID	Frequency [MHz], Channel Number	Conversion Factor	TSL Conductivity [S/m]	TSL Permittivity
Head, HSL	Point A, 10	D5GHz	CW, 0--	5800.0, 80	4.8	5.16	35.5

Hardware Setup

Phantom	TSL, Measured Date	Probe, Calibration Date	DAE, Calibration Date
SAM-HeadStand V10.0 - 1007	HBBL 600-6000 160212-1 HBBL600-6000 160212-1, --	EX3DV4 - SN3940, 2019-07-17	DAE4 Sn1384, 2019-07-08

Scan Setup

	Area Scan	Zoom Scan
Grid Extents [mm]	85.1329233459 x 82.7799205929	22.0 x 22.0 x 22.0
Grid Steps [mm]	85.1329233459 x 82.7799205929	4.0 x 4.0 x 2.0
Sensor Surface [mm]	3.0	3.0
Graded Grid	No	No
Grading Ratio	n/a	n/a
MAIA	MAIA not used	MAIA not used
Surface Detection	Mother Scan	Mother Scan
Scan Method	Measured	Measured

Measurement Results

	Area Scan	Zoom Scan
Date	2019-09-11, 10:10	2019-09-11, 10:24
SAR 1g [W/Kg]	8.05	8.06
SAR 10g [W/Kg]	2.55	2.31
Power Drift [dB]		-0.10
Power Scaling	Disabled	Disabled
Scaling Factor [dB]		
TSL Correction	No correction	No correction

