

SAR Test Report

<Photographs of EUT>

Tablet Mode



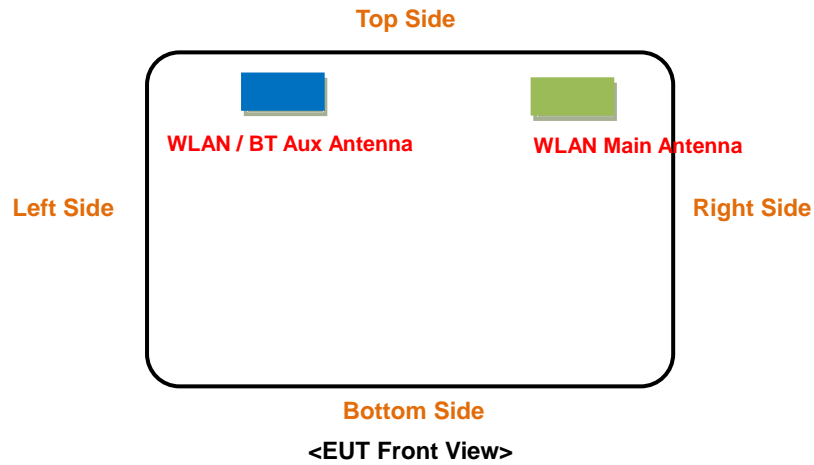
SAR Test Report

NB Mode	
<input type="checkbox"/>	<input type="checkbox"/>
<input type="checkbox"/>	<input type="checkbox"/>

SAR Test Report

<Antenna Location>

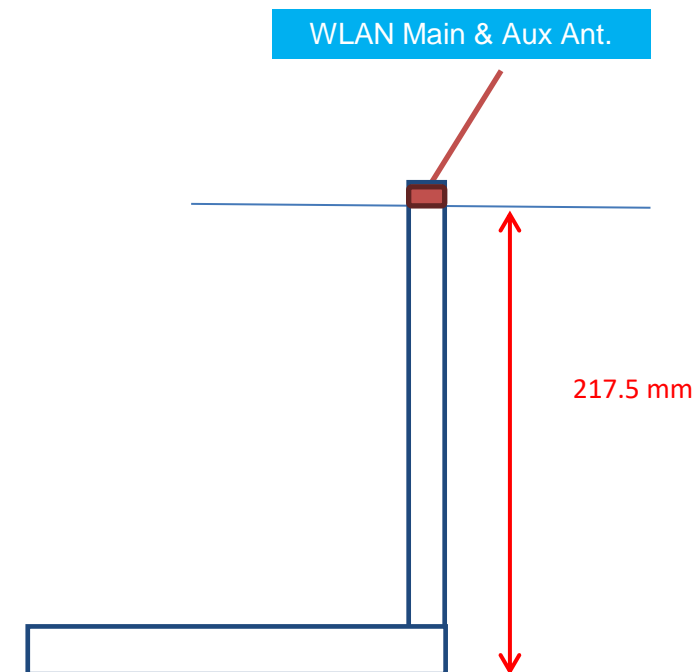
Tablet Mode



The separation distance for antenna to edge:

Antenna	To Top Side (mm)	To Bottom Side (mm)	To Left Side (mm)	To Right Side (mm)
WLAN Main	1.62	217.9	226.15	46.15
WLAN/BT Aux	1.62	217.9	76.15	193.15


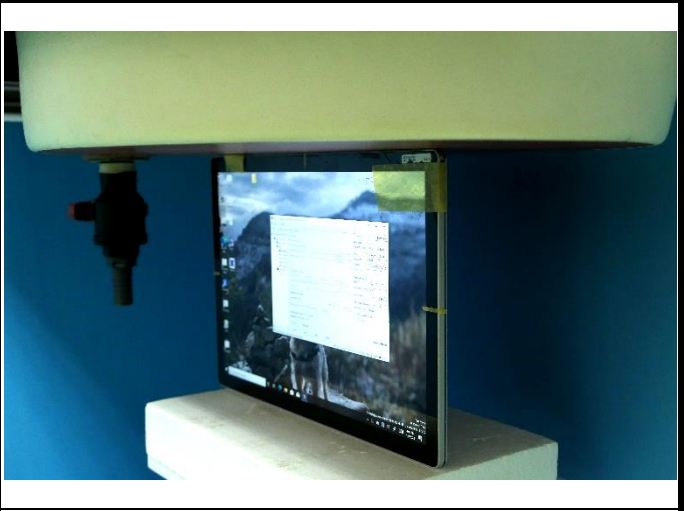


NB Mode



SAR Test Report

<Photographs of SAR Setup>

Tablet Mode

	
<p>Body - Rear Face of EUT at 0 mm</p>	<p>Body - Top Side of EUT at 0 mm w/o Keyboard</p>
	
<p>Body - Top Side of EUT at 0 mm w/ Keyboard</p>	

SAR Test Report

NB Mode



Body – Back of Panel of EUT at 25 mm



Body - Top of Panel of EUT at 25 mm