

# SAR Test Report

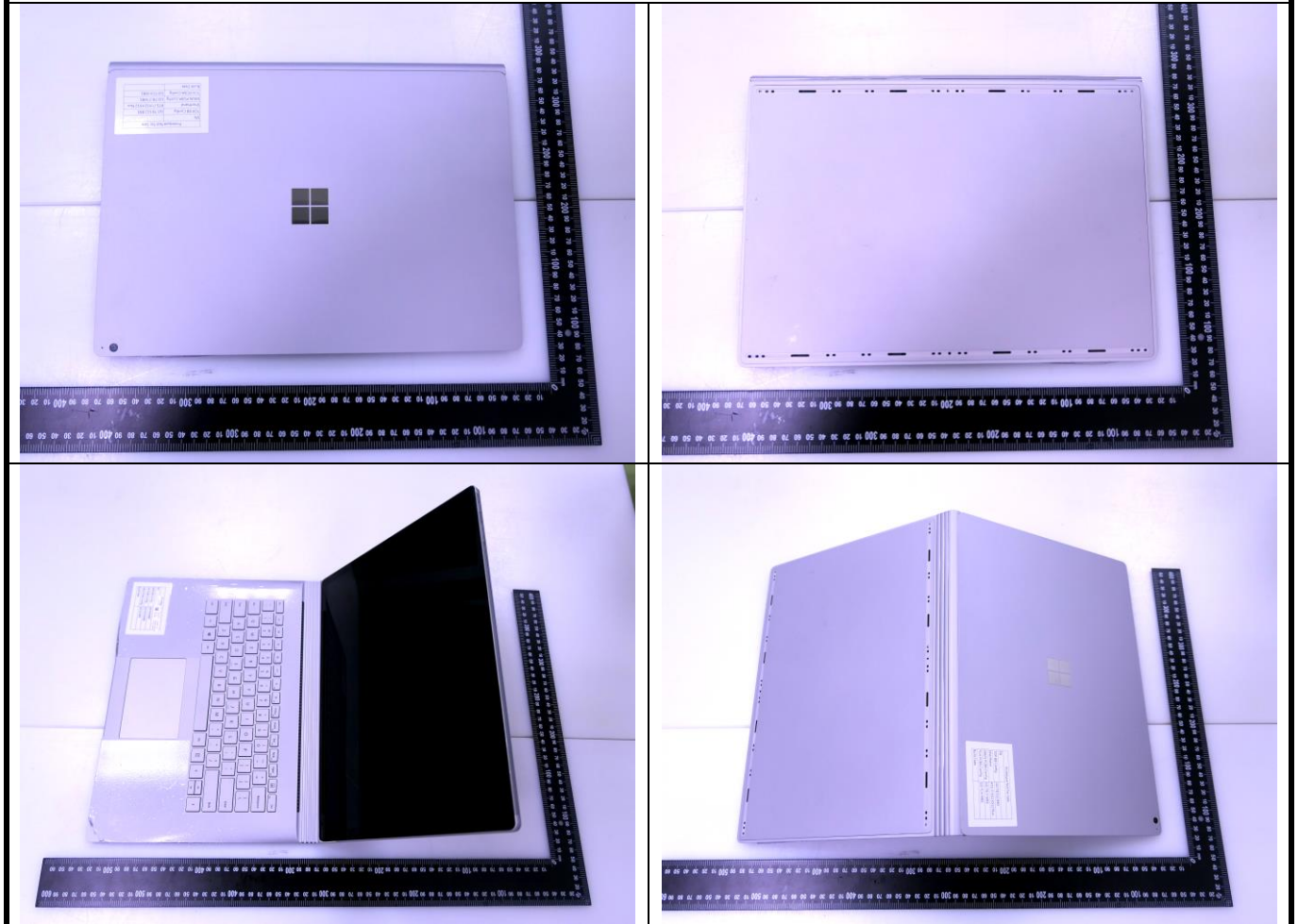
## <Photographs of EUT>

### Tablet Mode



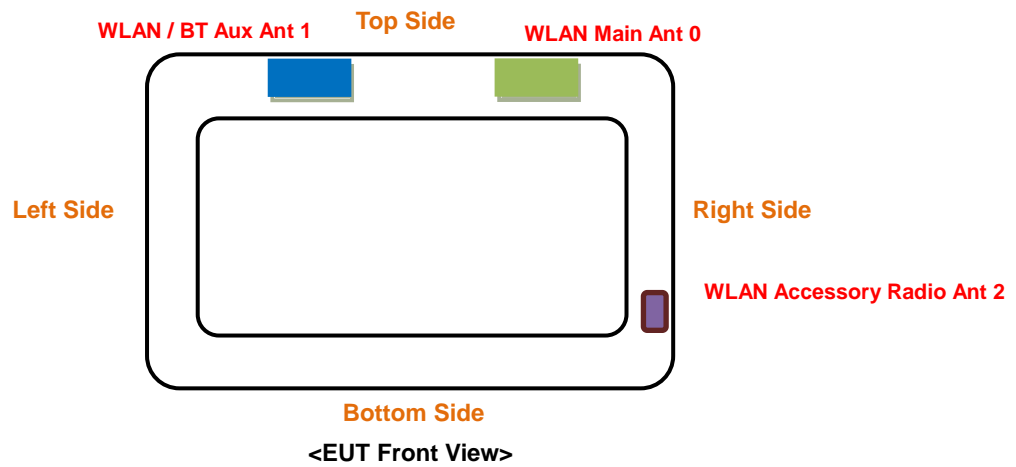
# SAR Test Report

## NB Mode



# SAR Test Report

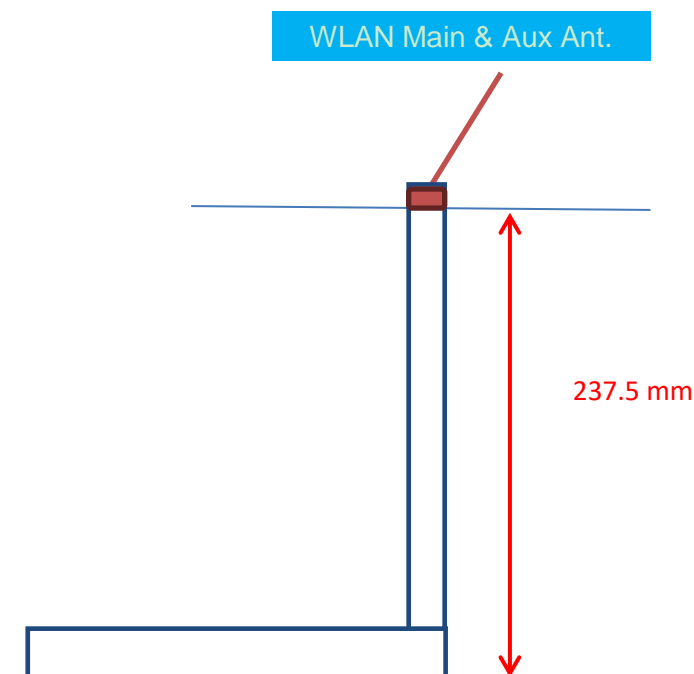
## Tablet Mode



The separation distance for antenna to edge:

Antenna	To Top Side (mm)	To Bottom Side (mm)	To Left Side (mm)	To Right Side (mm)
WLAN Main Ant.0	1.04	237.5	241.54	56.53
WLAN / BT Aux Ant.1	1.04	237.5	81.53	213.54
WLAN Accessory Radio Ant.2	167.38	31.6	334.24	1.6

## NB Mode



# SAR Test Report

## <Photographs of SAR Setup>

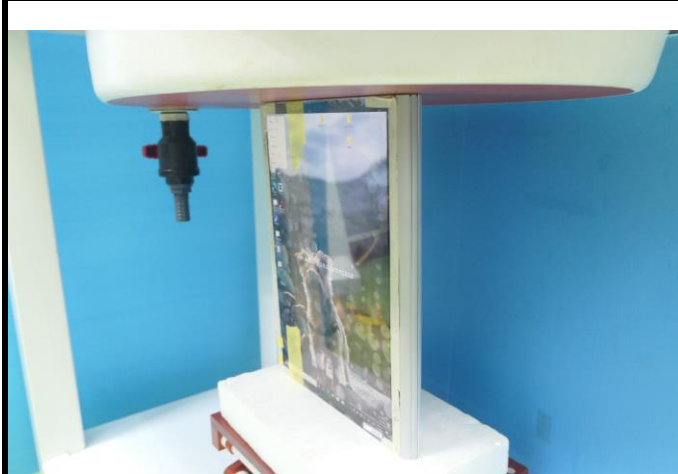
### Tablet Mode



Body - Rear Face of EUT at 0 mm



Body - Right Side of EUT at 0 mm w/o Keyboard



Body - Right Side of EUT at 0 mm w/ Keyboard



Body - Top Side of EUT at 0 mm w/o Keyboard



Body - Top Side of EUT at 0 mm w/ Keyboard



Body - Bottom Side of EUT at 0 mm

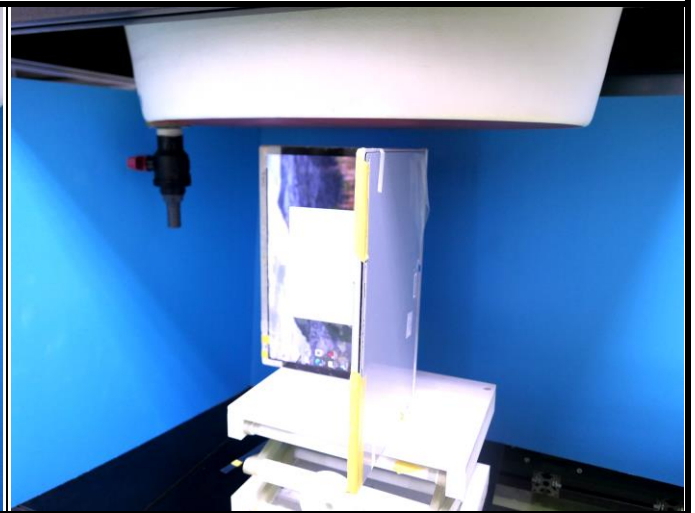


# SAR Test Report

## NB Mode



Body – Back of Panel of EUT at 25 mm



Body - Right of Panel of EUT at 25 mm



Body - Top of Panel of EUT at 25 mm

