

BT RF section

Top edge

24GHz SRD section

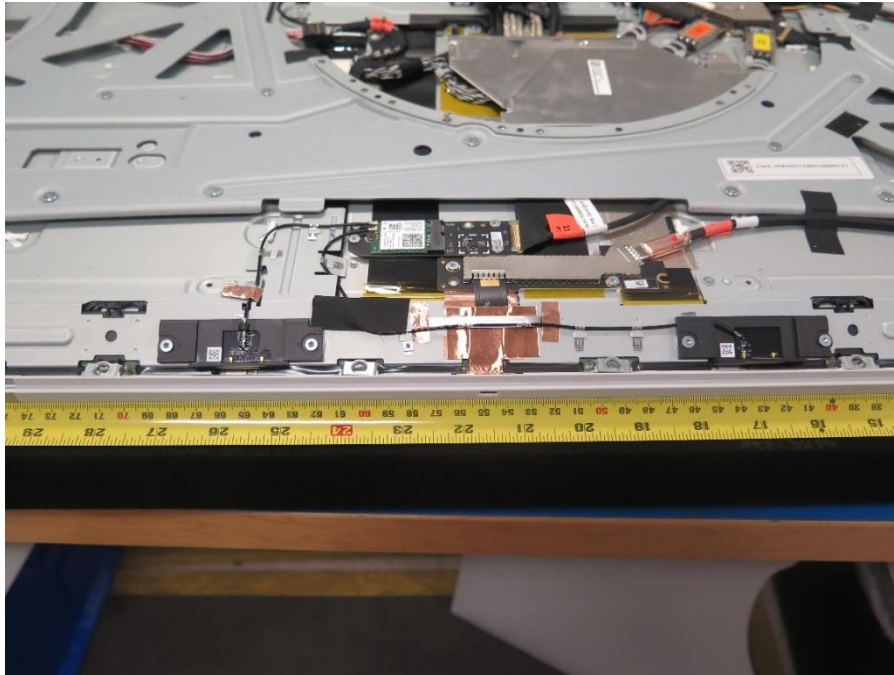
Wi-Fi RF section

Bottom edge

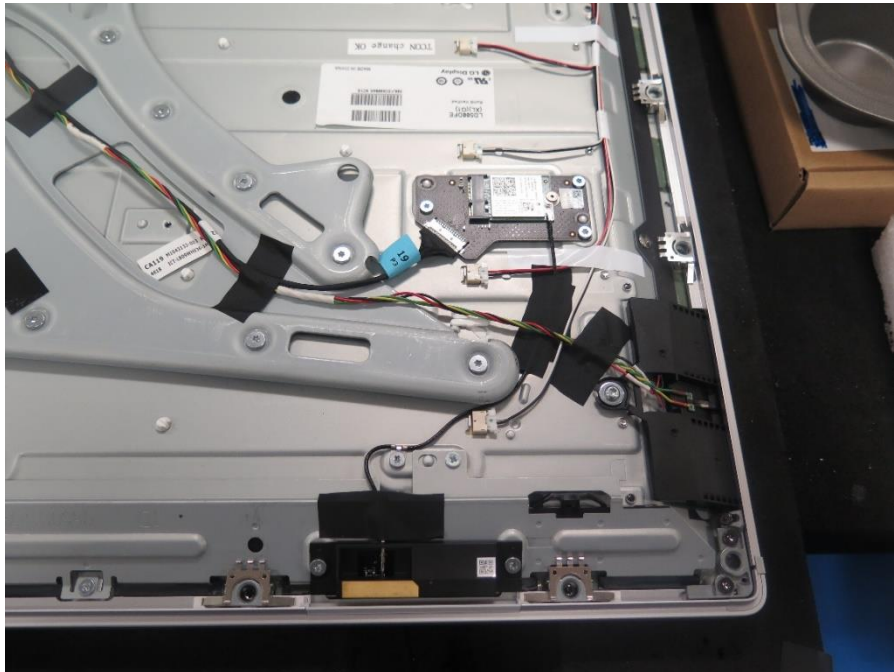
EUT back cover off



EUT back cover off



Close up Wi-Fi RF section



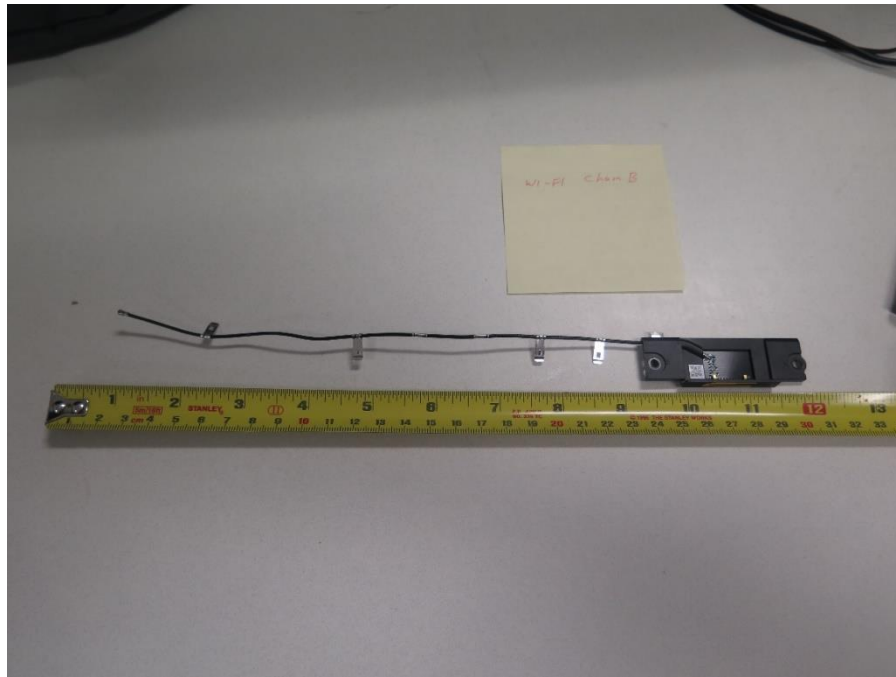
Close up BT RF circuitry section



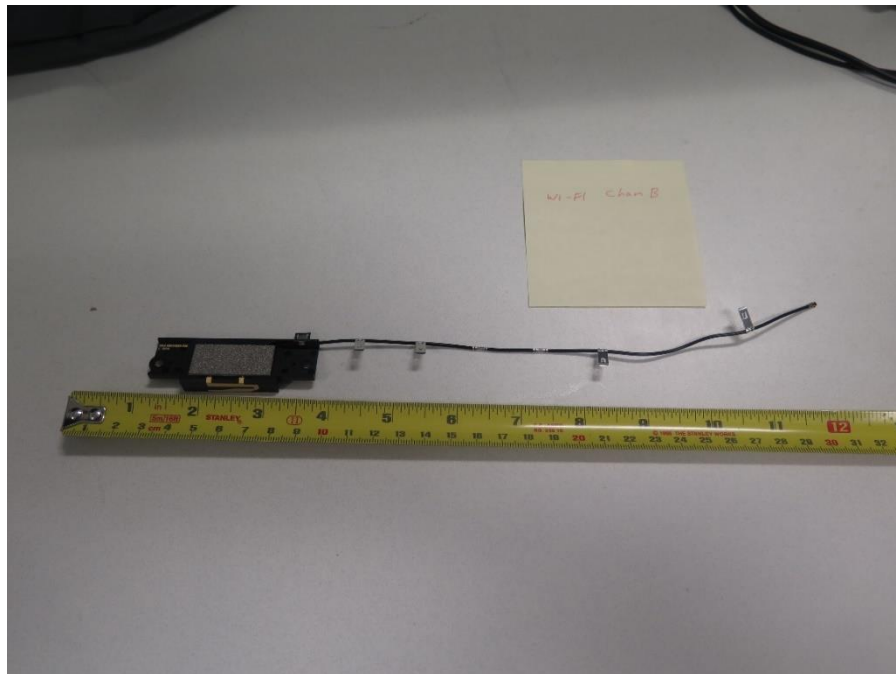
Wi-Fi Chain A – Antenna view 1



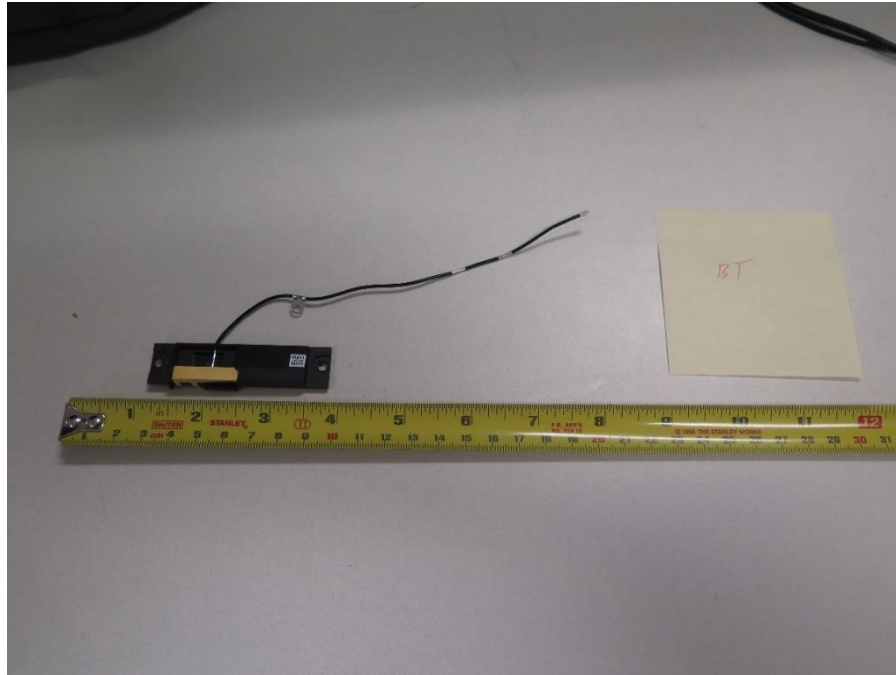
Wi-Fi Chain A – Antenna view 2



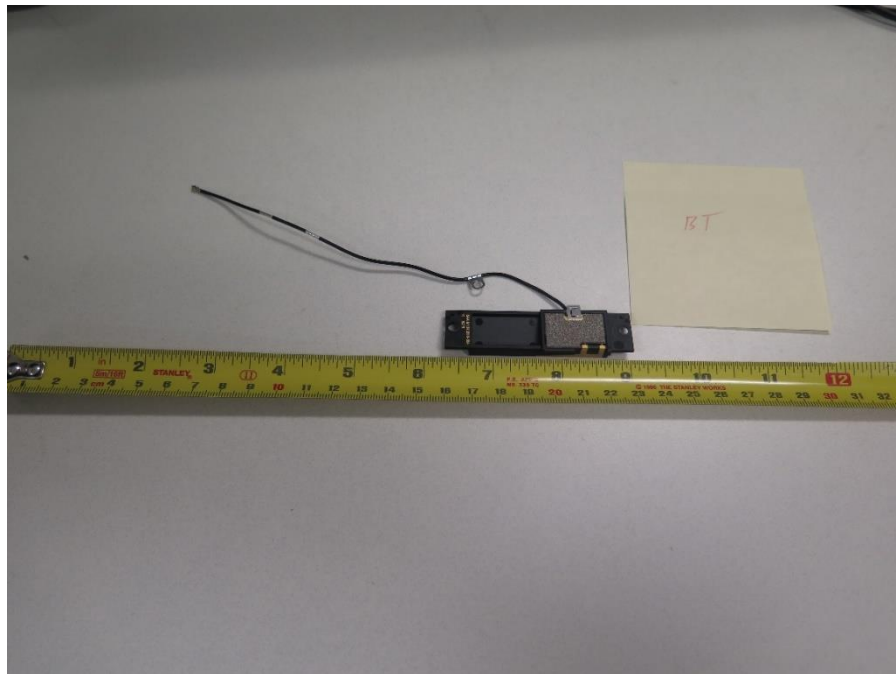
Wi-Fi Chain B – Antenna view 1



Wi-Fi Chain B – Antenna view 2



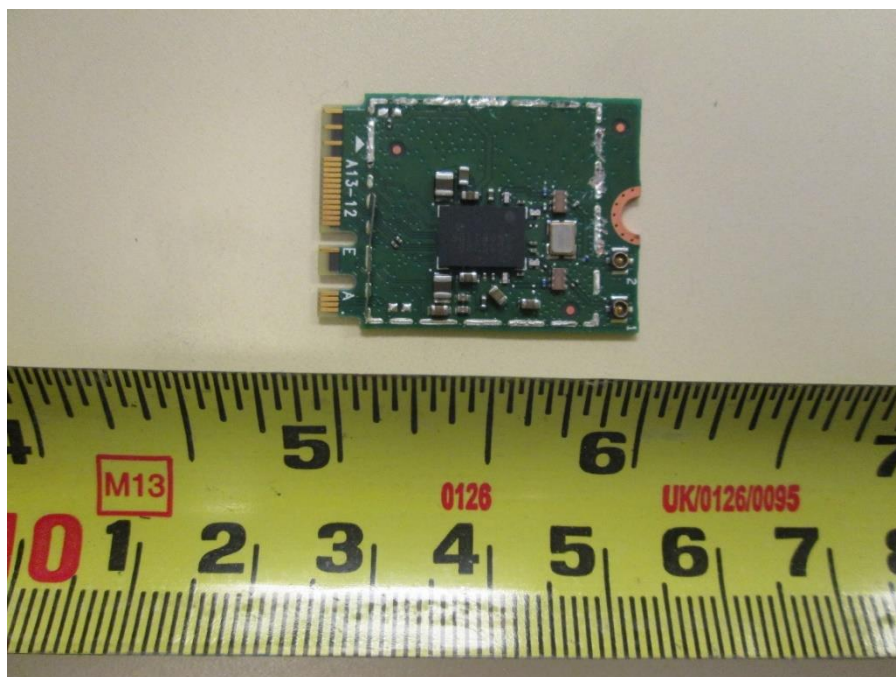
BT – Antenna view 1



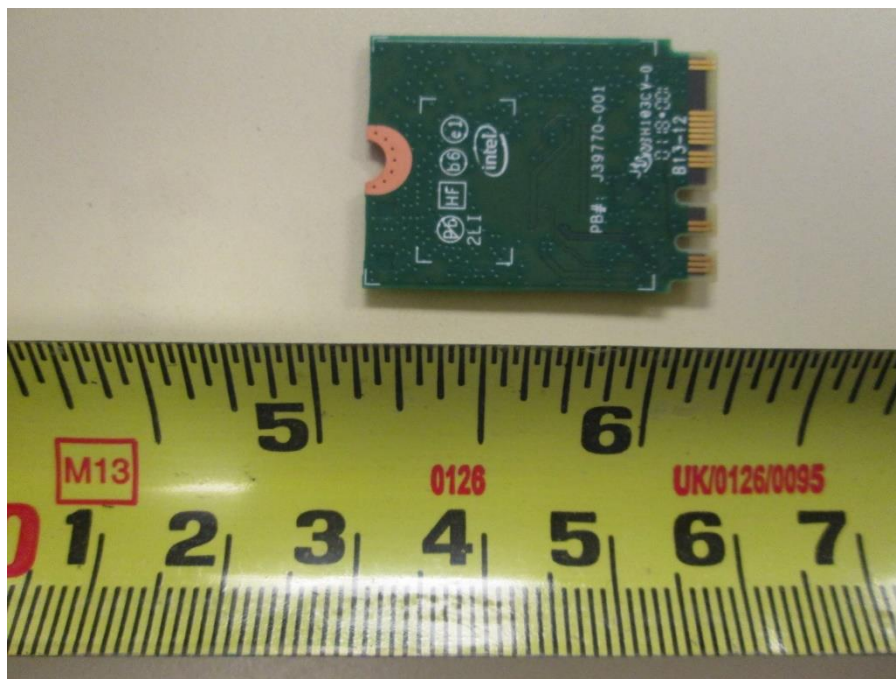
BT – Antenna view 2



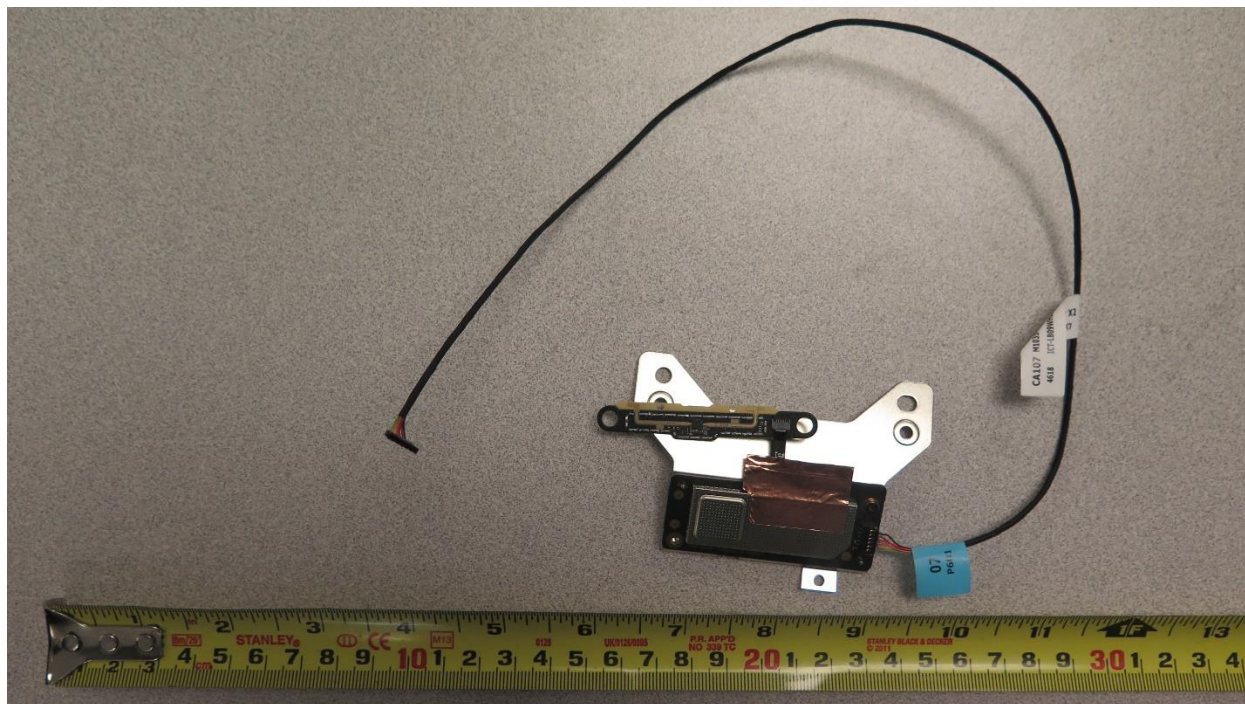
Wi-Fi/BT radio module – Top view



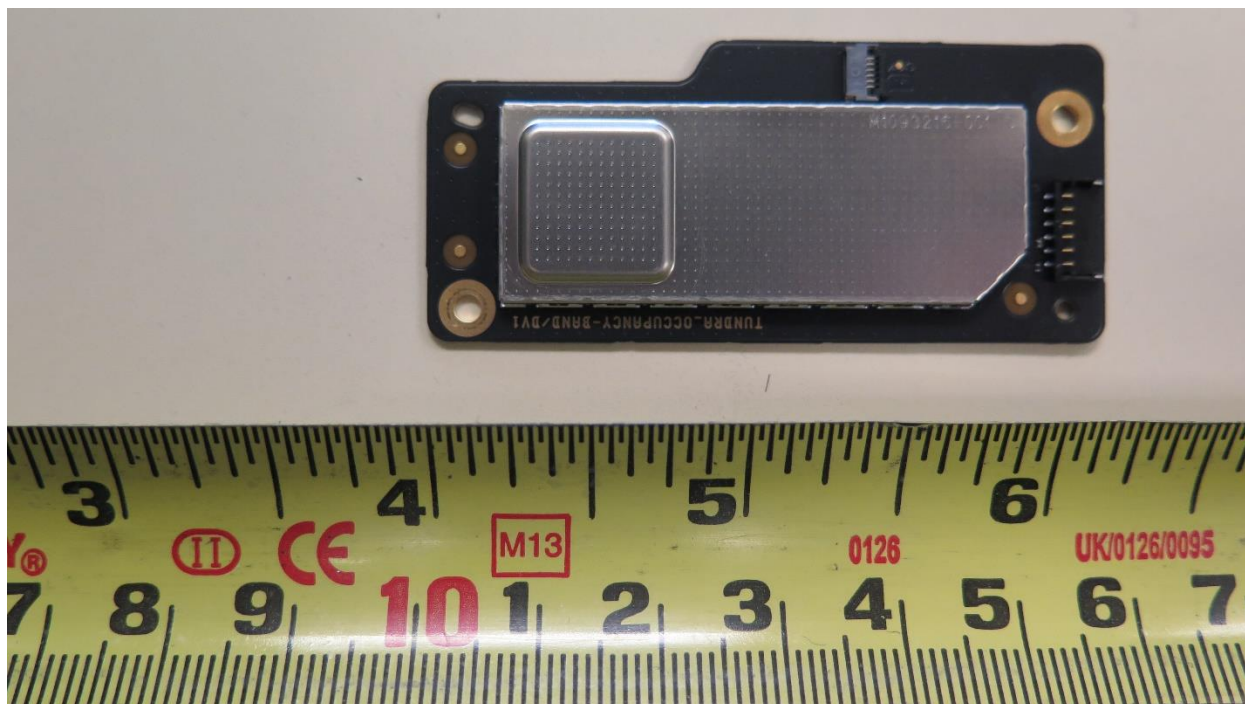
Wi-Fi/BT radio module without RF shield – Top view



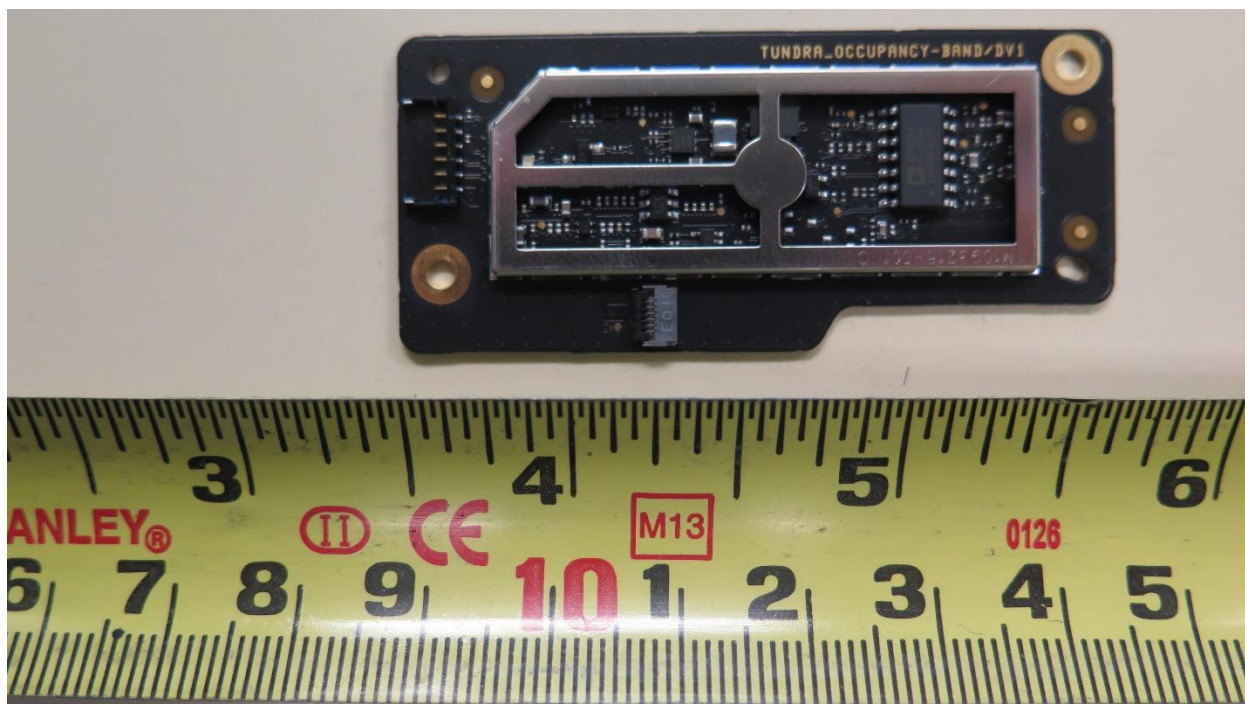
Wi-Fi/BT radio module– Bottom view



24GHz SRD radio – Baseband board and Sensor board

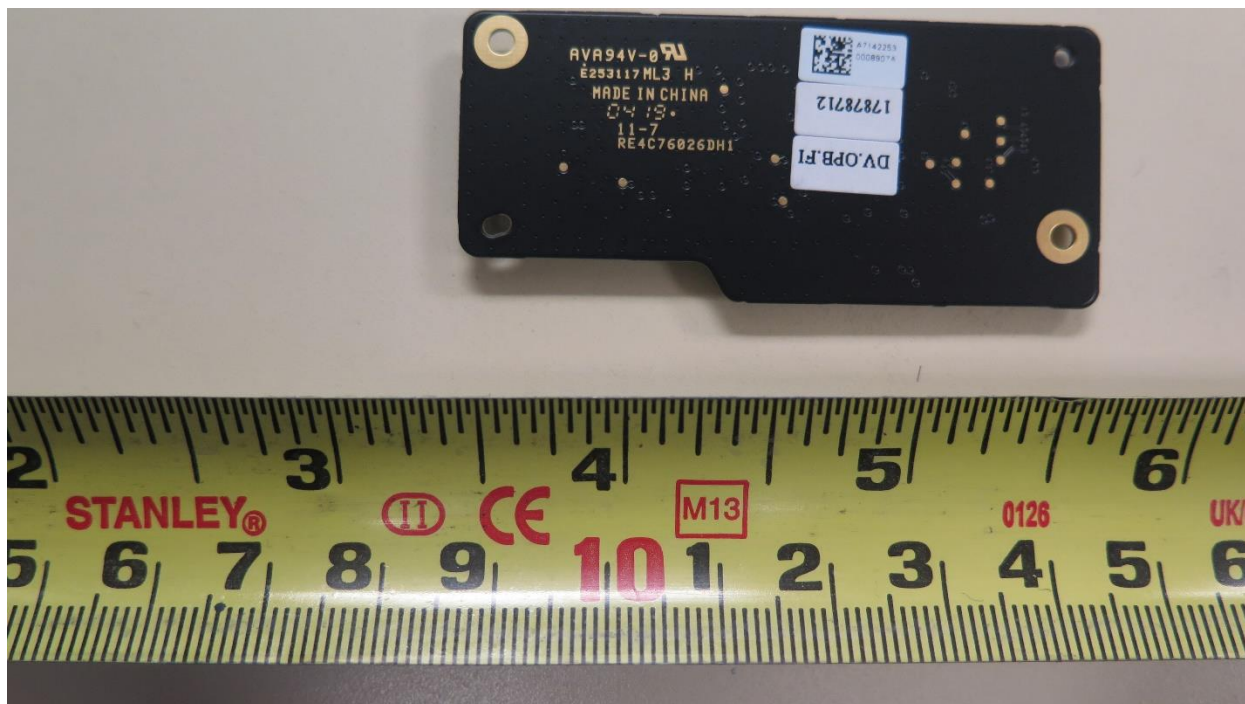


24GHz SRD radio baseband- Top view

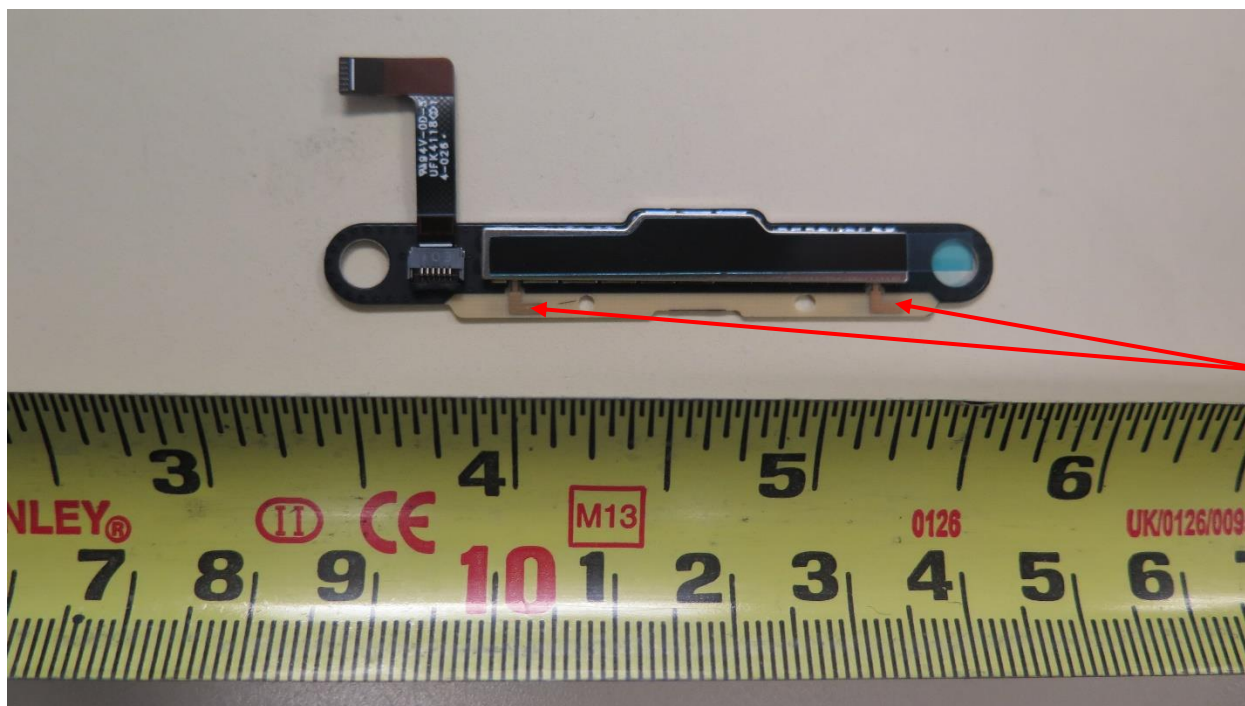


24GHz SRD radio baseband board without RF shield- Top view



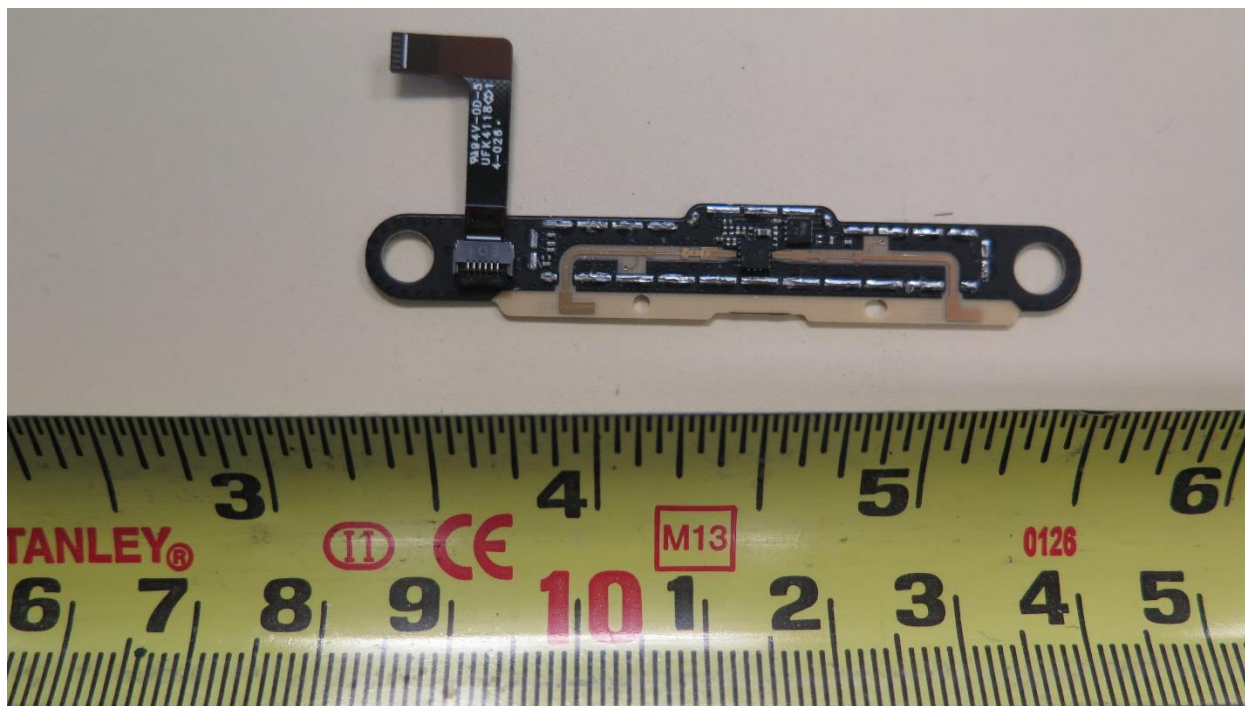


24GHz SRD radio baseband board- Bottom view

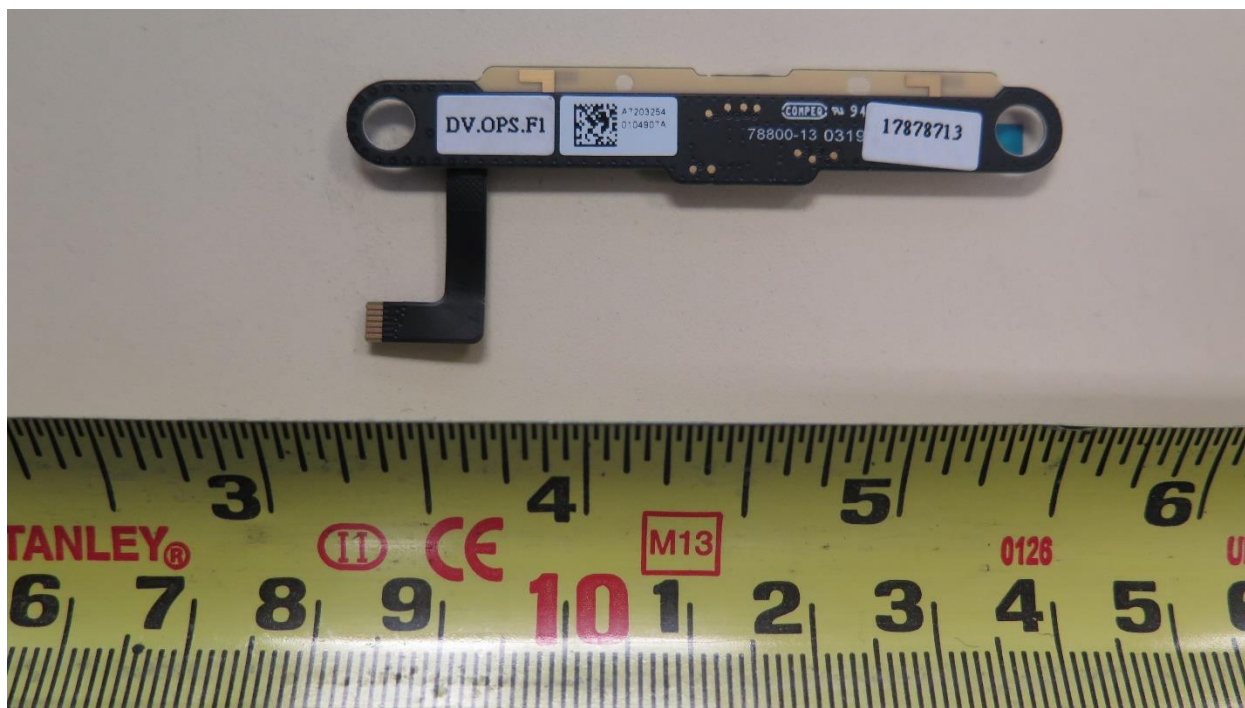


Antenna

24GHz SRD radio sensor board- Top view



24GHz SRD radio sensor board without RF shield- Top view



24GHz SRD radio sensor board - Bottom view