

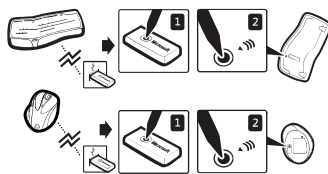
Microsoft®
Microsoft® Natural® Wireless Ergonomic Keyboard

See printed manual for patent information
 Made in China (S) Model: 1118

This device complies with part 15 of the FCC Rules. Operation is subject to the following two conditions: (1) This device may not cause harmful interference, and (2) this device must accept any interference received, including interference that may cause undesired operation.



**This device has not been approved by the Federal Communications Commission.
 This device is not, and may not be, offered for sale or lease,
 or sold or leased until the approval of the FCC has been obtained.**



X811925-001

Scale 1:1

Outline Does Not Print

PROPRIETARY NOTE

THE INFORMATION CONTAINED HEREON IS CONFIDENTIAL, IS SUBMITTED IN CONFIDENCE, AND IS PROPRIETARY INFORMATION OF MICROSOFT CORPORATION, AND SHALL ONLY BE USED IN THE FURTHERANCE OF, THE CONTRACT OF WHICH THIS DRAWING FORMS A PART, AND SHALL NOT, WITHOUT MICROSOFT CORPORATION'S PRIOR WRITTEN APPROVAL, BE REPRODUCED OR IN ANY WAY USED IN WHOLE OR IN PART IN CONNECTION WITH SERVICES OR EQUIPMENT OFFERED FOR SALE OR FURNISHED TO OTHERS. THE INFORMATION CONTAINED HEREON MAY NOT BE DISCLOSED TO A THIRD PARTY WITHOUT CONSENT OF MICROSOFT CORPORATION, AND THEN, ONLY PURSUANT TO A MICROSOFT APPROVED NONDISCLOSURE AGREEMENT.

TOLERANCES
 UNLESS OTHERWISE SPECIFIED
 DIMENSIONS ARE IN MILLIMETERS

DWN./DATE 1/15/2007
 Brian Greller, RMB Vivid, Inc.

SOFTWARE VERSION
 Adobe Illustrator 11.0

Microsoft®

DESCRIPTION
 ARTWORK LABEL, PRODUCT, NA, MS
 NATL WRLS ERGO KYBD 7000

DRAWING NUMBER

INDUSTRIAL DESIGN FILE NAME

Artwork NUMBER

AW811925-001

REVISION

A

AW811925-001 RevA_OUTLINE.pdf